

Data Path : Z:\pestpcbsrv\HPCHEM1\ECD_L\Data\PL060222\
 Data File : PL075416.D
 Signal(s) : Signal #1: ECD1A.ch Signal #2: ECD2B.ch
 Acq On : 02 Jun 2022 23:11
 Operator : AR\AJ
 Sample : PSTDCCC050
 Misc :
 ALS Vial : 4 Sample Multiplier: 1

Integration File signal 1: autoint1.e
 Integration File signal 2: autoint2.e
 Quant Time: Jun 03 06:11:54 2022
 Quant Method : Z:\pestpcbsrv\HPCHEM1\ECD_L\methods\PL052822.M
 Quant Title : GC Extractables
 QLast Update : Wed Jun 01 10:19:11 2022
 Response via : Initial Calibration
 Integrator: ChemStation

Volume Inj. : 1 µl
 Signal #1 Phase : ZB-MR2 Signal #2 Phase: ZB-MR1
 Signal #1 Info : 30M x 0.32mm x0.2 Signal #2 Info : 30M x 0.32mm x0.5µm

Compound	RT#1	RT#2	Resp#1	Resp#2	ng/ml	ng/ml

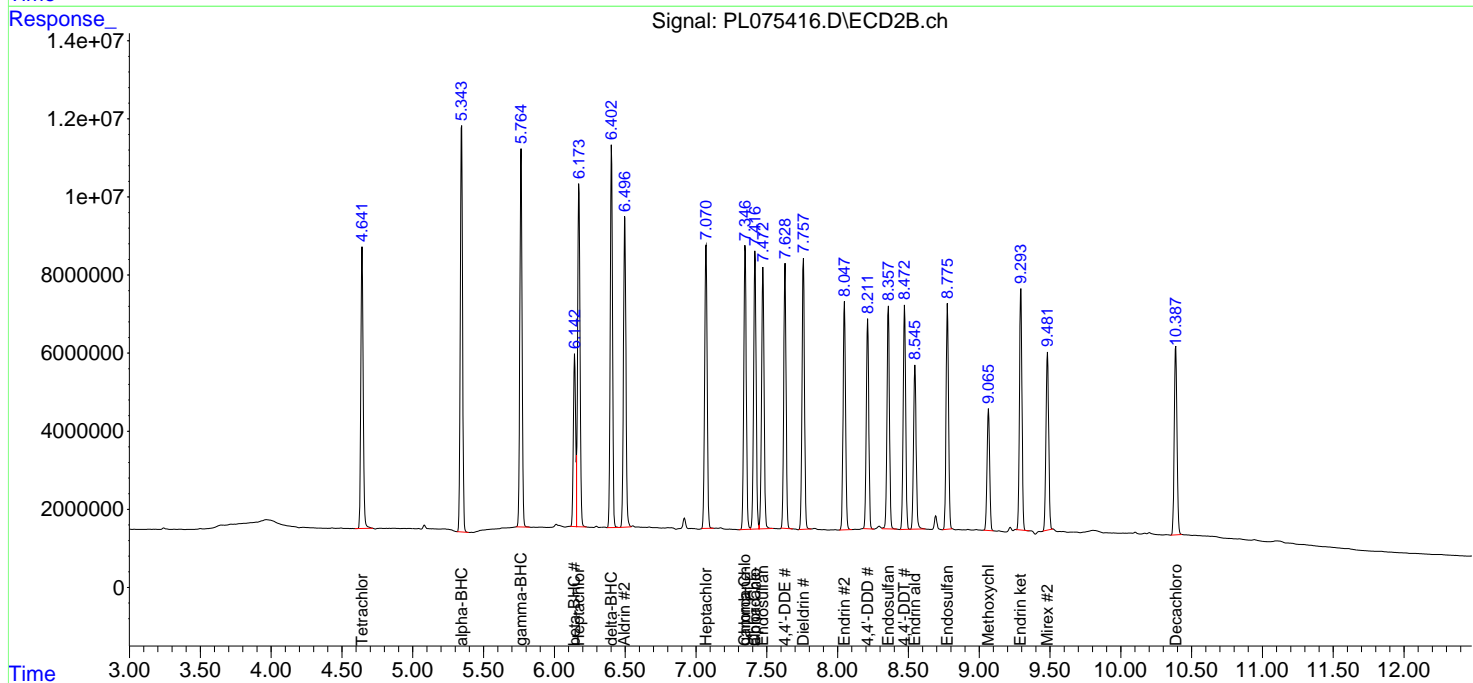
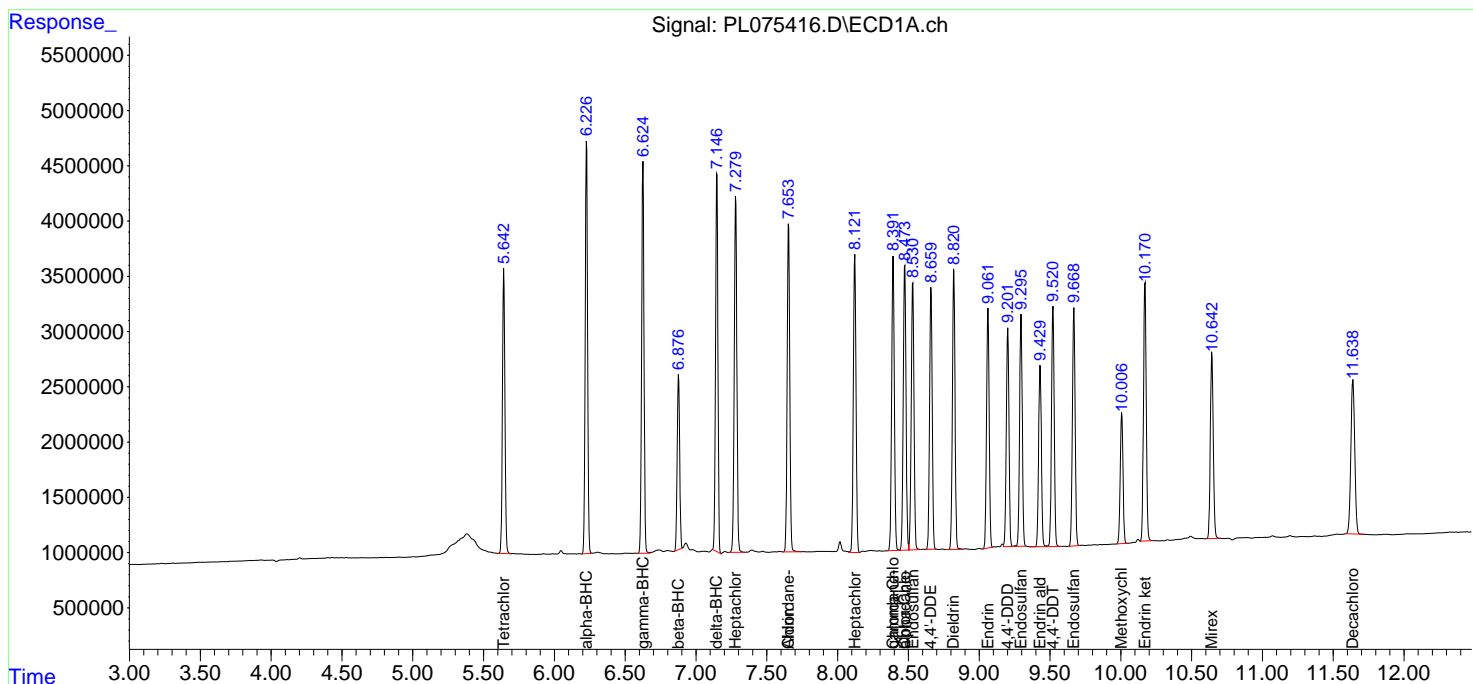
System Monitoring Compounds						
1) SA Tetrachlo...	5.643	4.643	31384041	82742087	53.398	52.231
2) SA Decachlor...	11.640	10.388	26914104	64894953	50.196	47.290
Target Compounds						
2) A alpha-BHC	6.227	5.345	44406557	116.3E6	53.808	53.755
3) MA gamma-BHC...	6.626	5.765	42024287	108.9E6	53.693	51.872
4) MA Heptachlor	7.281	6.174	41406893	105.8E6	51.700	51.920
5) MB Aldrin	7.654	6.498	37661393	97323438	51.647	50.429
6) B beta-BHC	6.877	6.143	19230699	48617976	51.653	50.091
7) B delta-BHC	7.148	6.404	39966477	108.2E6	52.047	50.440
8) B Heptachlo...	8.122	7.071	35282888	89597506	51.681	49.031
9) A Endosulfan I	8.531	7.473	32168372	82276944	51.218	48.688
10) B gamma-Chl...	8.393	7.347	34617908	89772137	51.329	48.812
11) B alpha-Chl...	8.475	7.417	34617779	89041812	51.091	48.729
12) B 4,4'-DDE	8.660	7.629	30284663	78763285	52.058	48.359
13) MA Dieldrin	8.821	7.759	32845311	84527122	51.831	48.716
14) MA Endrin	9.063	8.049	27684943	71228462	52.134	45.756
15) B Endosulfa...	9.296	8.359	27742924	69678851	49.151	44.259
16) A 4,4'-DDD	9.202	8.213	25564034	65702428	51.689	49.153
17) MA 4,4'-DDT	9.522	8.473	28832600	69556231	49.500	48.636
18) B Endrin al...	9.431	8.546	22560000	54136360	51.334	44.906
19) B Endosulfa...	9.669	8.776	28437997	70731120	51.124	47.256
20) A Methoxychlor	10.007	9.066	16012243	39282607	52.279	48.375
21) B Endrin ke...	10.171	9.295	32095717	77335253	52.277	48.360
22) Mirex	10.644	9.482	24487660	61436863	50.516	48.314
24) Chlordane-2	7.654f	0.000	37661393	0	1322.444	N.D. #
25) Chlordane-3	8.393	7.347	34617908	89772137	372.027	508.601 #
26) Chlordane-4	8.475	7.417	34617779	89041812	305.035	471.361 #

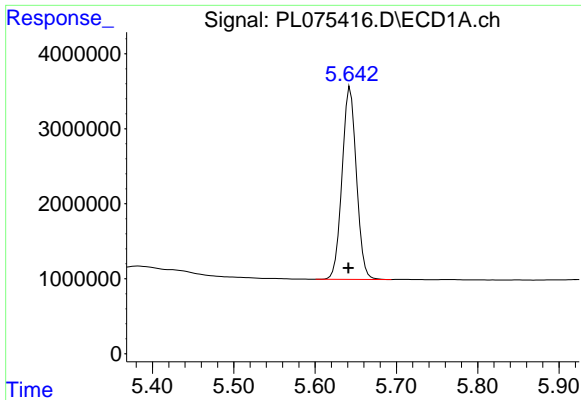
(f)=RT Delta > 1/2 Window (#)=Amounts differ by > 25% (m)=manual int.

Data Path : Z:\pestpcbsrv\HPCHEM1\ECD_L\Data\PL060222\
 Data File : PL075416.D
 Signal(s) : Signal #1: ECD1A.ch Signal #2: ECD2B.ch
 Acq On : 02 Jun 2022 23:11
 Operator : AR\AJ
 Sample : PSTDCCC050
 Misc :
 ALS Vial : 4 Sample Multiplier: 1

Integration File signal 1: autoint1.e
 Integration File signal 2: autoint2.e
 Quant Time: Jun 03 06:11:54 2022
 Quant Method : Z:\pestpcbsrv\HPCHEM1\ECD_L\methods\PL052822.M
 Quant Title : GC Extractables
 QLast Update : Wed Jun 01 10:19:11 2022
 Response via : Initial Calibration
 Integrator: ChemStation

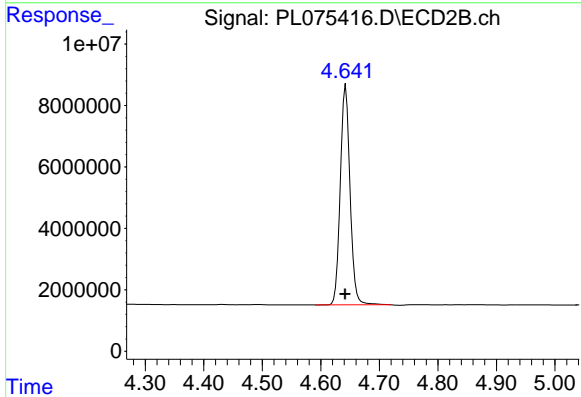
Volume Inj. : 1 µl
 Signal #1 Phase : ZB-MR2 Signal #2 Phase: ZB-MR1
 Signal #1 Info : 30M x 0.32mm x0.2 Signal #2 Info : 30M x 0.32mm x0.5µm





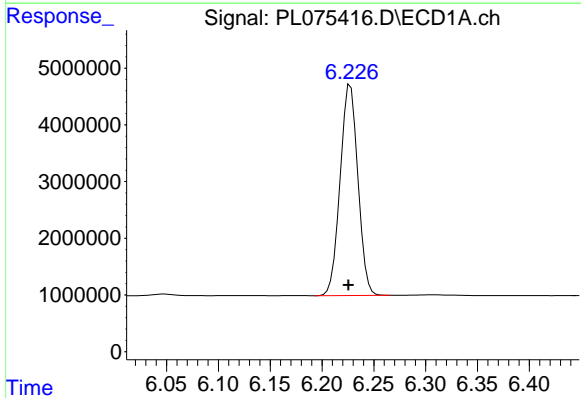
#1 Tetrachloro-m-xylene

R.T.: 5.643 min
Delta R.T.: 0.002 min
Response: 31384041
Conc: 53.40 ng/ml



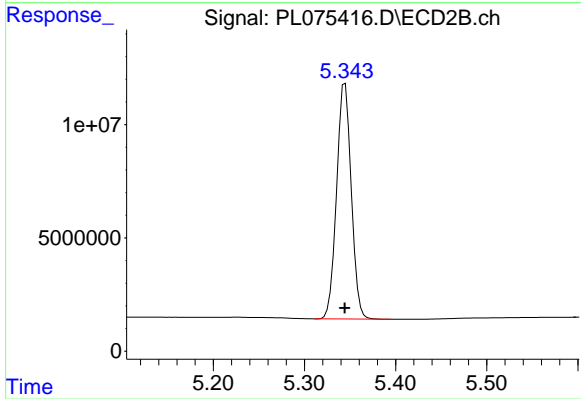
#1 Tetrachloro-m-xylene

R.T.: 4.643 min
Delta R.T.: 0.001 min
Response: 82742087
Conc: 52.23 ng/ml



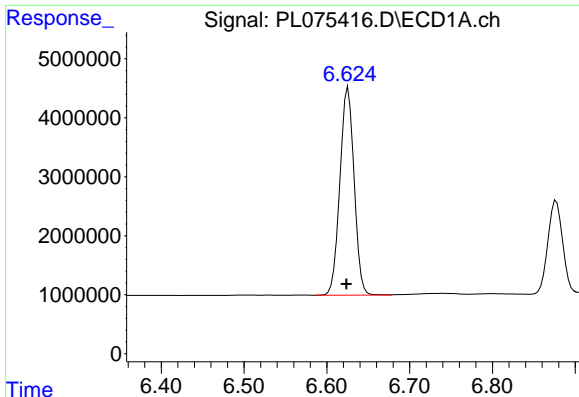
#2 alpha-BHC

R.T.: 6.227 min
Delta R.T.: 0.002 min
Response: 44406557
Conc: 53.81 ng/ml



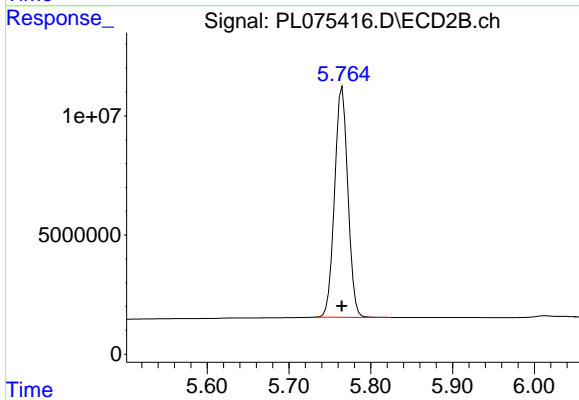
#2 alpha-BHC

R.T.: 5.345 min
Delta R.T.: 0.000 min
Response: 116339545
Conc: 53.75 ng/ml



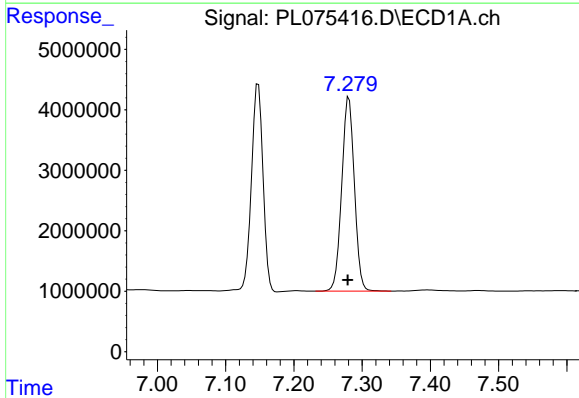
#3 gamma-BHC (Lindane)

R.T.: 6.626 min
Delta R.T.: 0.002 min
Response: 42024287
Conc: 53.69 ng/ml



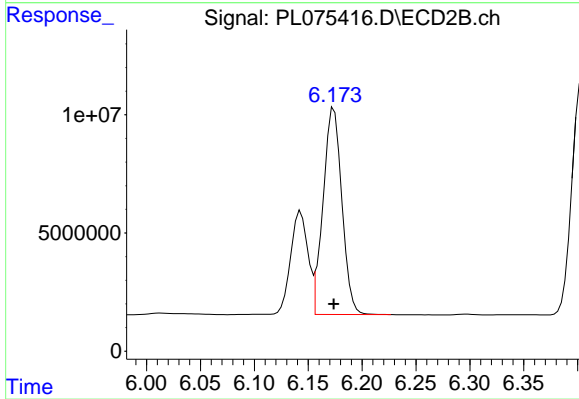
#3 gamma-BHC (Lindane)

R.T.: 5.765 min
Delta R.T.: 0.000 min
Response: 108940567
Conc: 51.87 ng/ml



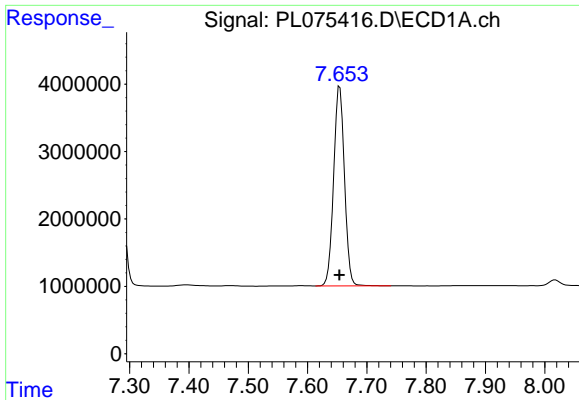
#4 Heptachlor

R.T.: 7.281 min
Delta R.T.: 0.002 min
Response: 41406893
Conc: 51.70 ng/ml

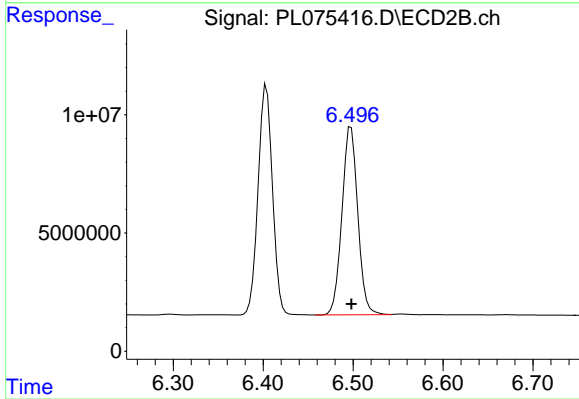


#4 Heptachlor

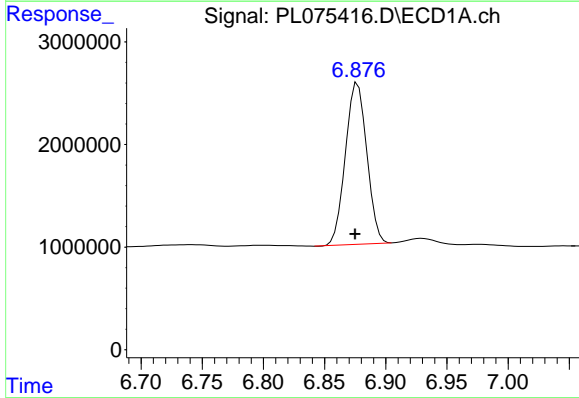
R.T.: 6.174 min
Delta R.T.: 0.000 min
Response: 105842828
Conc: 51.92 ng/ml



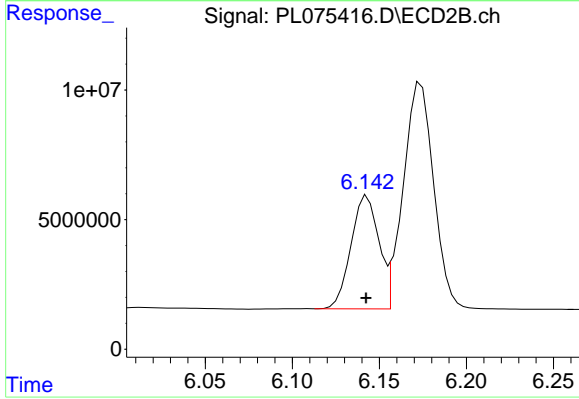
#5 Aldrin
R.T.: 7.654 min
Delta R.T.: 0.000 min
Response: 37661393
Conc: 51.65 ng/ml



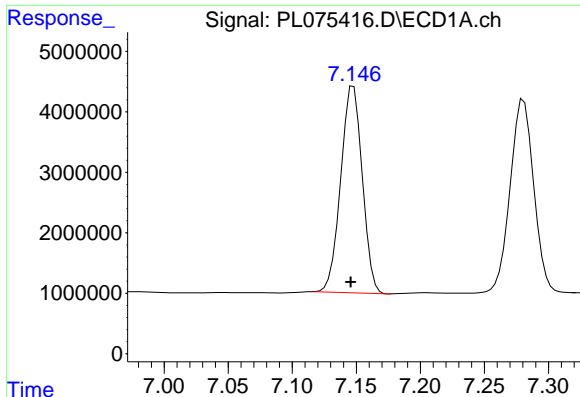
#5 Aldrin
R.T.: 6.498 min
Delta R.T.: 0.000 min
Response: 97323438
Conc: 50.43 ng/ml



#6 beta-BHC
R.T.: 6.877 min
Delta R.T.: 0.002 min
Response: 19230699
Conc: 51.65 ng/ml

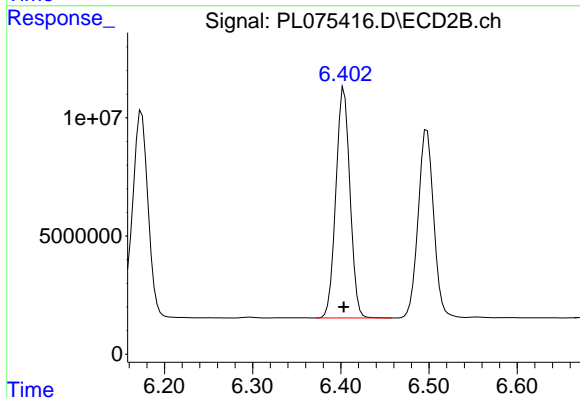


#6 beta-BHC
R.T.: 6.143 min
Delta R.T.: 0.000 min
Response: 48617976
Conc: 50.09 ng/ml



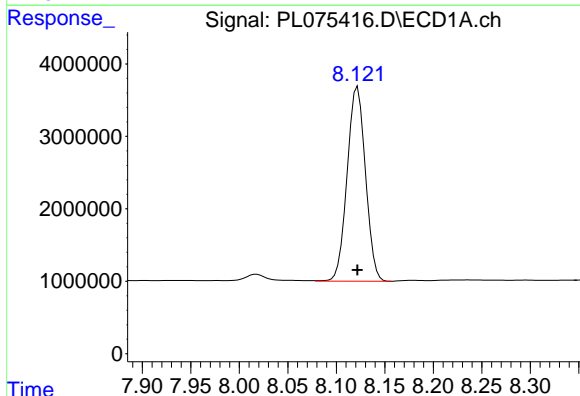
#7 delta-BHC

R.T.: 7.148 min
Delta R.T.: 0.002 min
Response: 39966477
Conc: 52.05 ng/ml



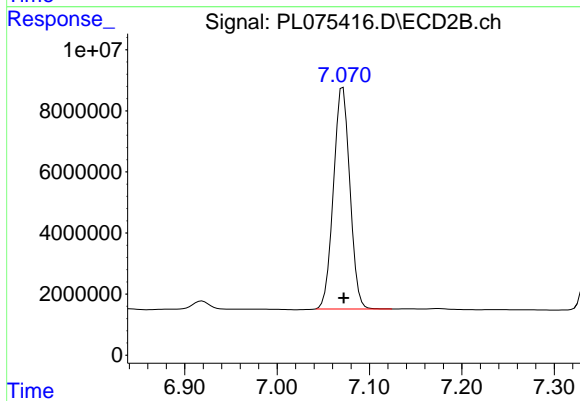
#7 delta-BHC

R.T.: 6.404 min
Delta R.T.: 0.000 min
Response: 108205675
Conc: 50.44 ng/ml



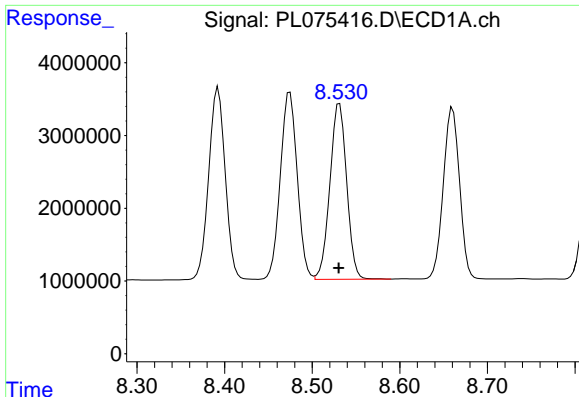
#8 Heptachlor epoxide

R.T.: 8.122 min
Delta R.T.: 0.000 min
Response: 35282888
Conc: 51.68 ng/ml



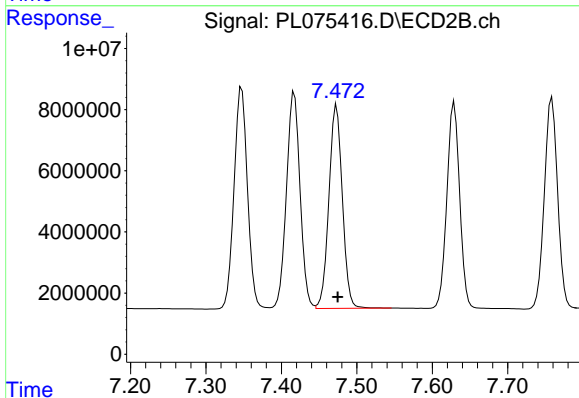
#8 Heptachlor epoxide

R.T.: 7.071 min
Delta R.T.: 0.000 min
Response: 89597506
Conc: 49.03 ng/ml



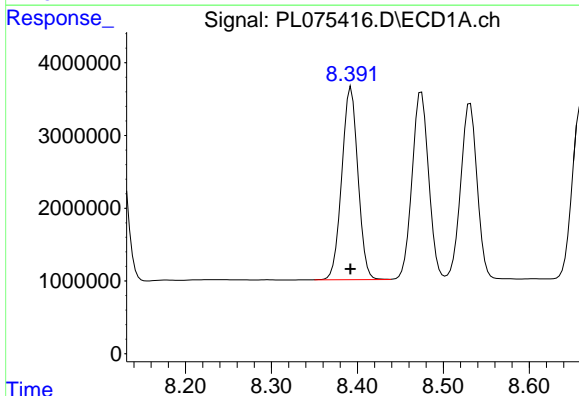
#9 Endosulfan I

R.T.: 8.531 min
Delta R.T.: 0.000 min
Response: 32168372
Conc: 51.22 ng/ml



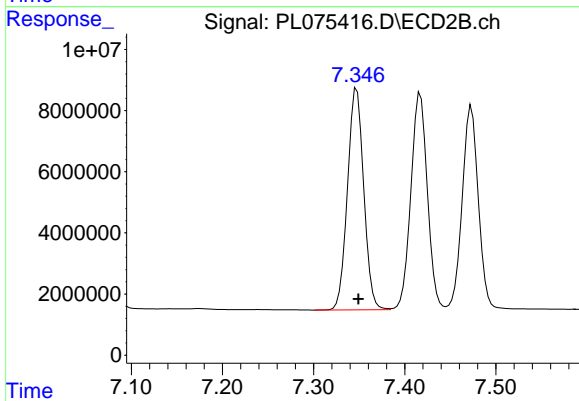
#9 Endosulfan I

R.T.: 7.473 min
Delta R.T.: -0.001 min
Response: 82276944
Conc: 48.69 ng/ml



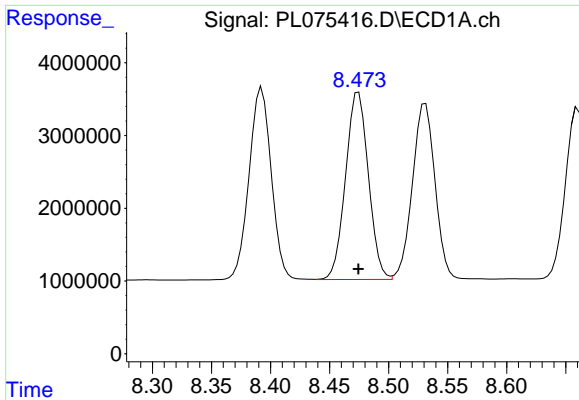
#10 gamma-Chlordane

R.T.: 8.393 min
Delta R.T.: 0.000 min
Response: 34617908
Conc: 51.33 ng/ml

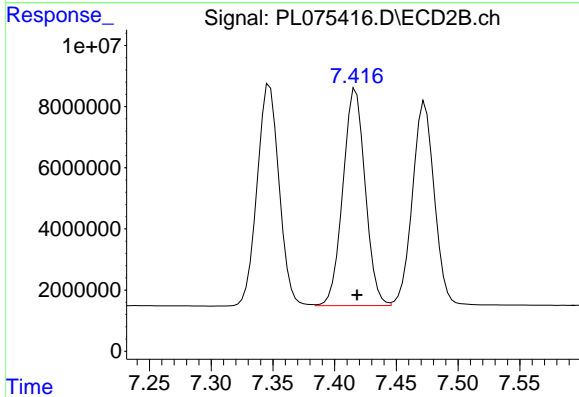


#10 gamma-Chlordane

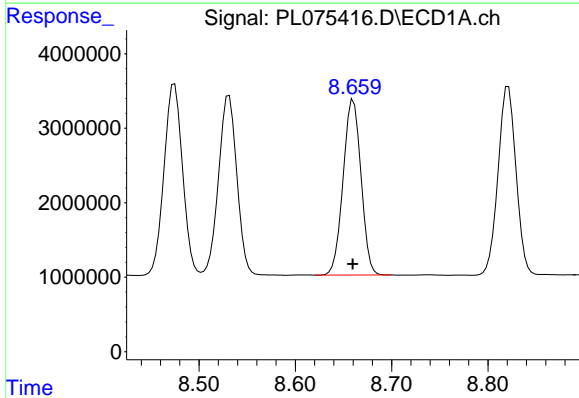
R.T.: 7.347 min
Delta R.T.: -0.002 min
Response: 89772137
Conc: 48.81 ng/ml



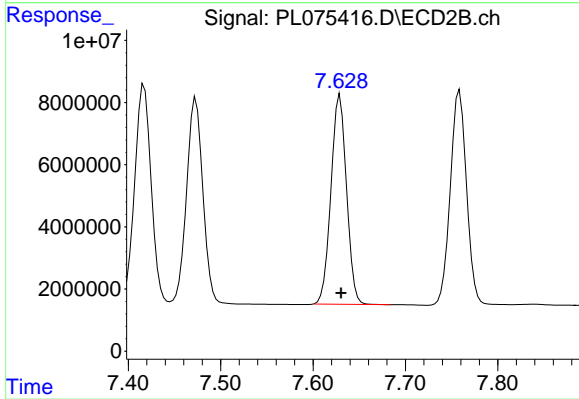
#11 alpha-Chlordane
R.T.: 8.475 min
Delta R.T.: 0.000 min
Response: 34617779
Conc: 51.09 ng/ml



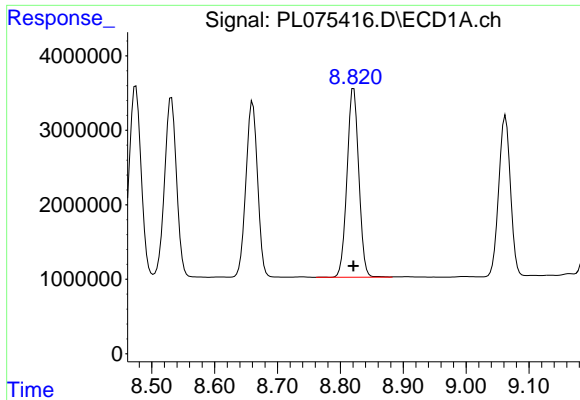
#11 alpha-Chlordane
R.T.: 7.417 min
Delta R.T.: -0.001 min
Response: 89041812
Conc: 48.73 ng/ml



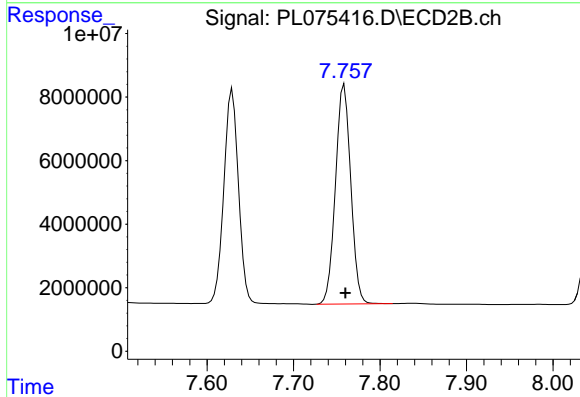
#12 4,4'-DDE
R.T.: 8.660 min
Delta R.T.: 0.000 min
Response: 30284663
Conc: 52.06 ng/ml



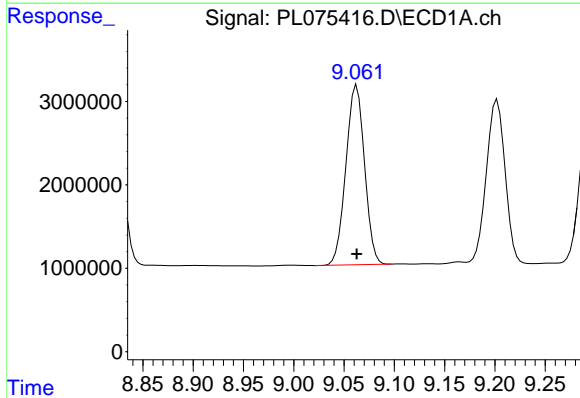
#12 4,4'-DDE
R.T.: 7.629 min
Delta R.T.: -0.001 min
Response: 78763285
Conc: 48.36 ng/ml



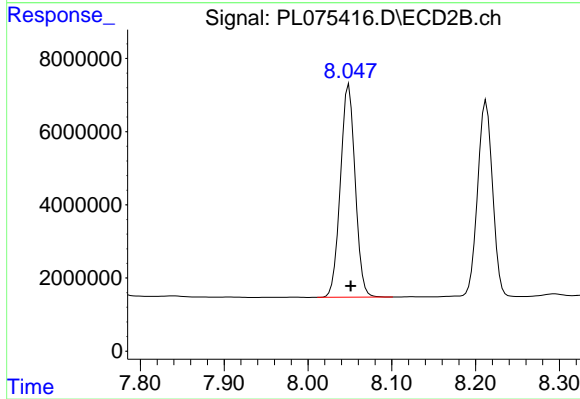
#13 Dieldrin
R.T.: 8.821 min
Delta R.T.: 0.000 min
Response: 32845311
Conc: 51.83 ng/ml



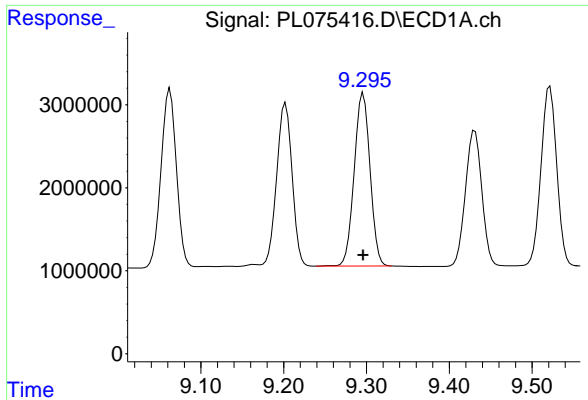
#13 Dieldrin
R.T.: 7.759 min
Delta R.T.: -0.001 min
Response: 84527122
Conc: 48.72 ng/ml



#14 Endrin
R.T.: 9.063 min
Delta R.T.: 0.000 min
Response: 27684943
Conc: 52.13 ng/ml

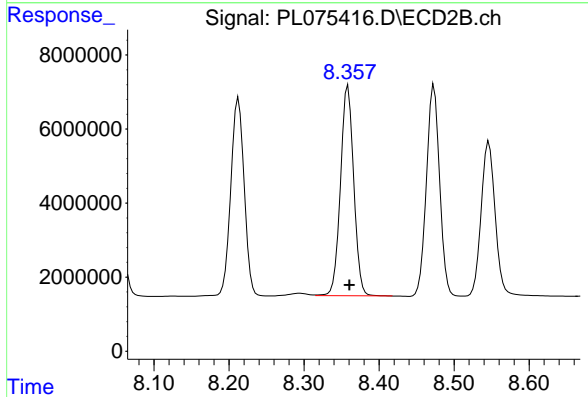


#14 Endrin
R.T.: 8.049 min
Delta R.T.: -0.002 min
Response: 71228462
Conc: 45.76 ng/ml



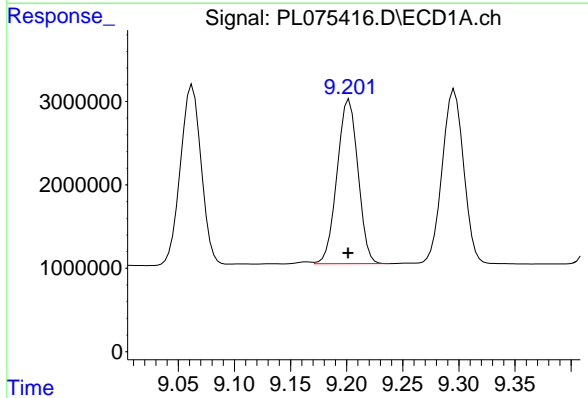
#15 Endosulfan II

R.T.: 9.296 min
 Delta R.T.: 0.000 min
 Response: 27742924
 Conc: 49.15 ng/ml



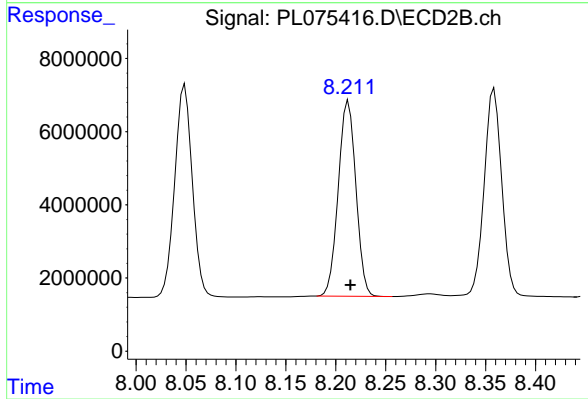
#15 Endosulfan II

R.T.: 8.359 min
 Delta R.T.: -0.002 min
 Response: 69678851
 Conc: 44.26 ng/ml



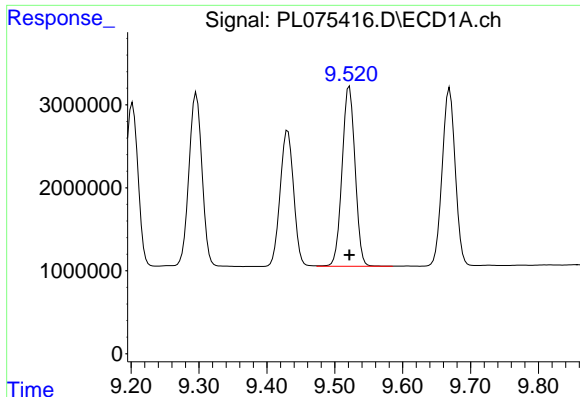
#16 4,4'-DDD

R.T.: 9.202 min
 Delta R.T.: 0.000 min
 Response: 25564034
 Conc: 51.69 ng/ml



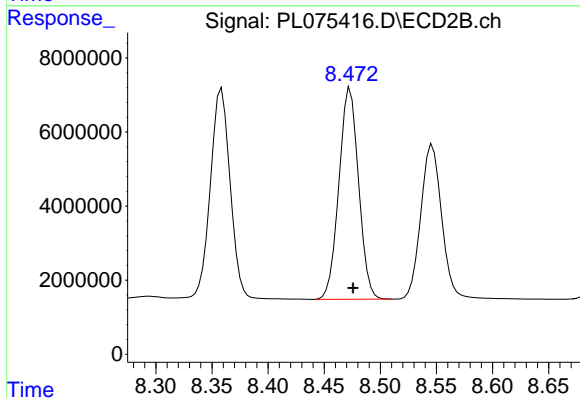
#16 4,4'-DDD

R.T.: 8.213 min
 Delta R.T.: -0.002 min
 Response: 65702428
 Conc: 49.15 ng/ml



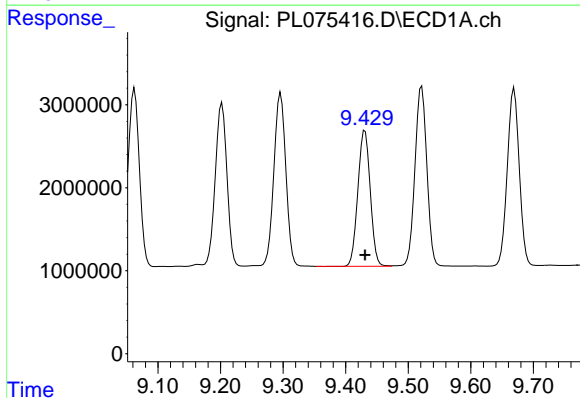
#17 4,4'-DDT

R.T.: 9.522 min
Delta R.T.: 0.000 min
Response: 28832600
Conc: 49.50 ng/ml



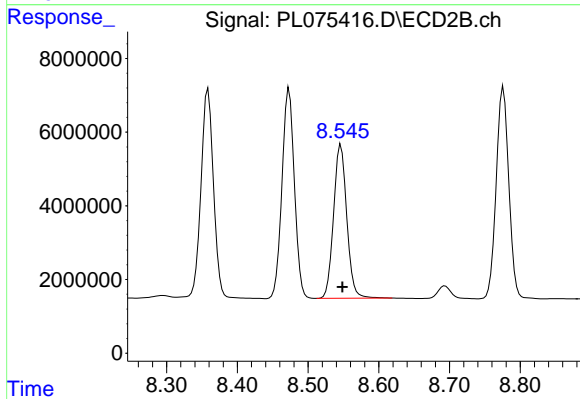
#17 4,4'-DDT

R.T.: 8.473 min
Delta R.T.: -0.003 min
Response: 69556231
Conc: 48.64 ng/ml



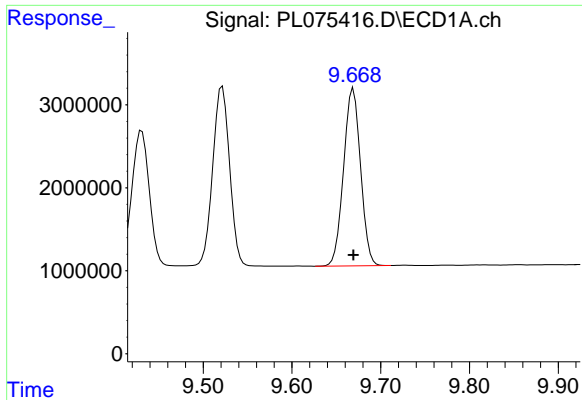
#18 Endrin aldehyde

R.T.: 9.431 min
Delta R.T.: 0.000 min
Response: 22560000
Conc: 51.33 ng/ml



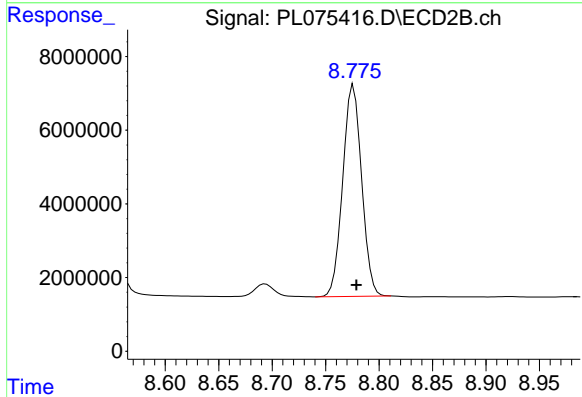
#18 Endrin aldehyde

R.T.: 8.546 min
Delta R.T.: -0.002 min
Response: 54136360
Conc: 44.91 ng/ml



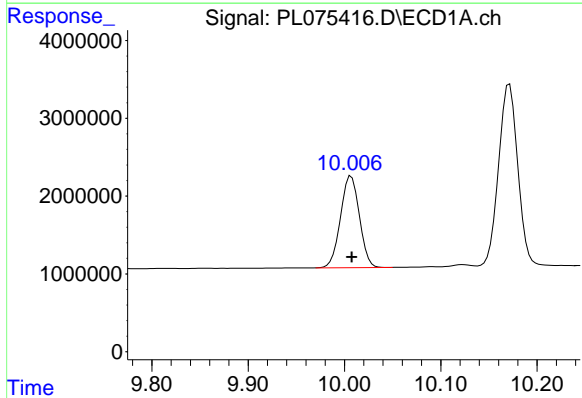
#19 Endosulfan Sulfate

R.T.: 9.669 min
 Delta R.T.: 0.000 min
 Response: 28437997
 Conc: 51.12 ng/ml



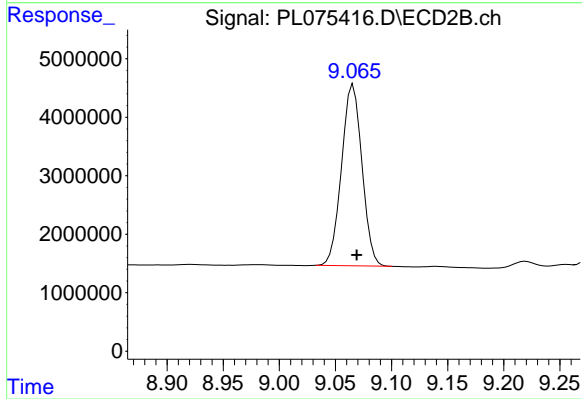
#19 Endosulfan Sulfate

R.T.: 8.776 min
 Delta R.T.: -0.003 min
 Response: 70731120
 Conc: 47.26 ng/ml



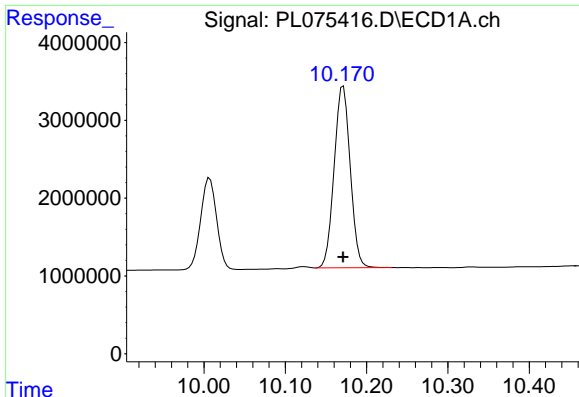
#20 Methoxychlor

R.T.: 10.007 min
 Delta R.T.: 0.000 min
 Response: 16012243
 Conc: 52.28 ng/ml



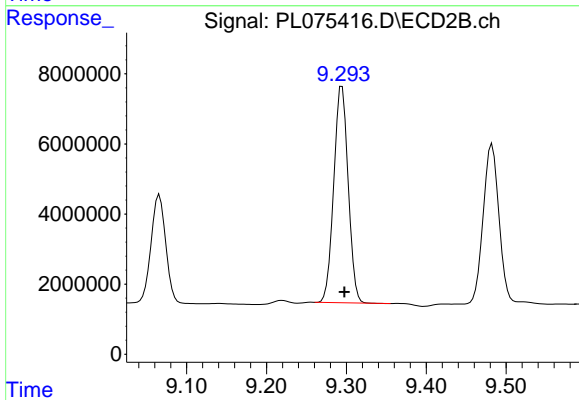
#20 Methoxychlor

R.T.: 9.066 min
 Delta R.T.: -0.003 min
 Response: 39282607
 Conc: 48.37 ng/ml



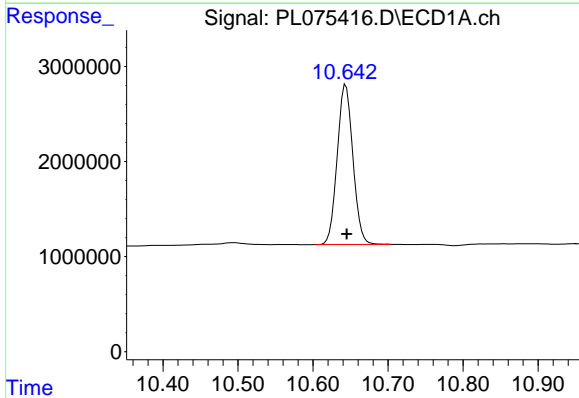
#21 Endrin ketone

R.T.: 10.171 min
 Delta R.T.: 0.000 min
 Response: 32095717
 Conc: 52.28 ng/ml



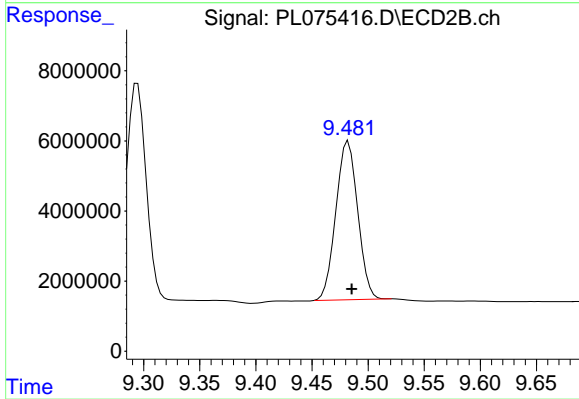
#21 Endrin ketone

R.T.: 9.295 min
 Delta R.T.: -0.003 min
 Response: 77335253
 Conc: 48.36 ng/ml



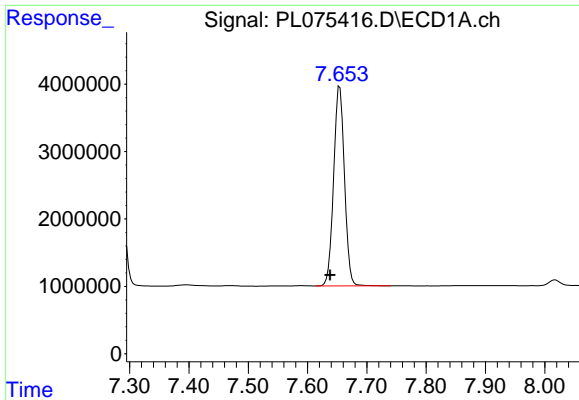
#22 Mirex

R.T.: 10.644 min
 Delta R.T.: -0.001 min
 Response: 24487660
 Conc: 50.52 ng/ml

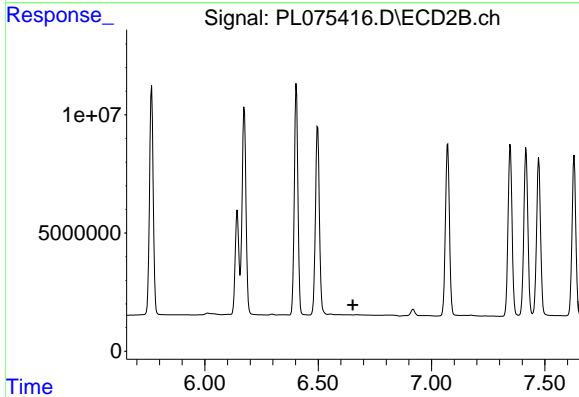


#22 Mirex

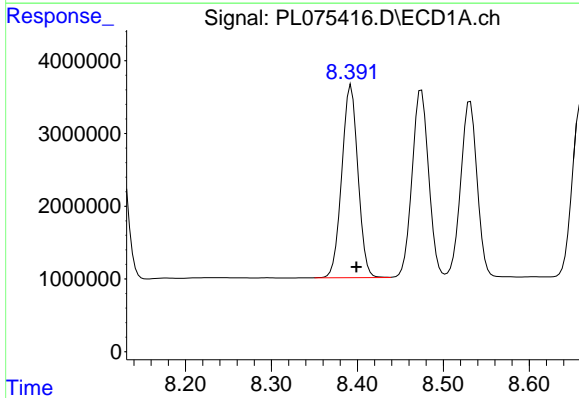
R.T.: 9.482 min
 Delta R.T.: -0.003 min
 Response: 61436863
 Conc: 48.31 ng/ml



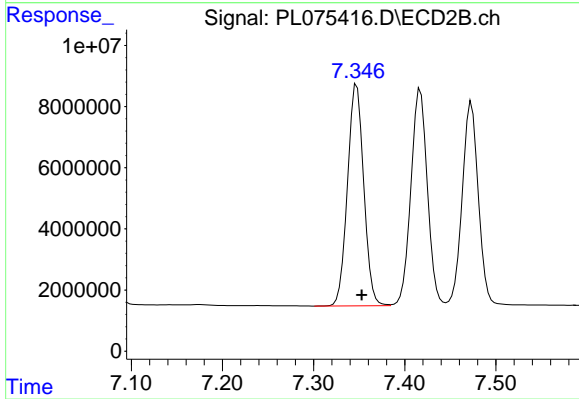
#24 Chlordane-2
 R.T.: 7.654 min
 Delta R.T.: 0.016 min
 Response: 37661393
 Conc: 1322.44 ng/ml



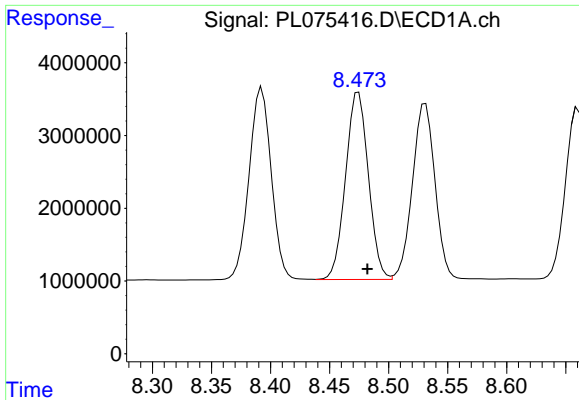
#24 Chlordane-2
 R.T.: 0.000 min
 Exp R.T.: 6.653 min
 Response: 0
 Conc: N.D.



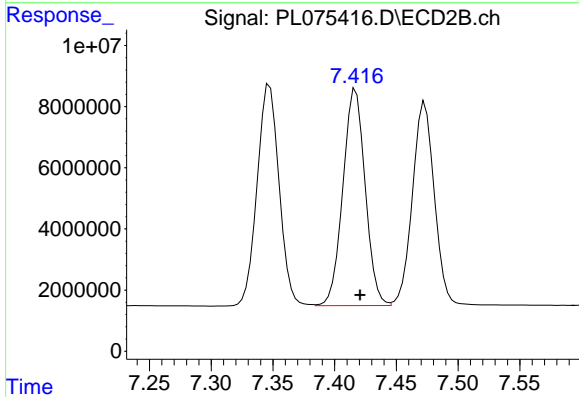
#25 Chlordane-3
 R.T.: 8.393 min
 Delta R.T.: -0.006 min
 Response: 34617908
 Conc: 372.03 ng/ml



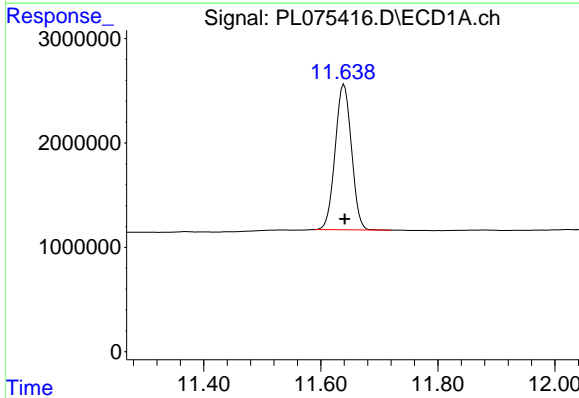
#25 Chlordane-3
 R.T.: 7.347 min
 Delta R.T.: -0.006 min
 Response: 89772137
 Conc: 508.60 ng/ml



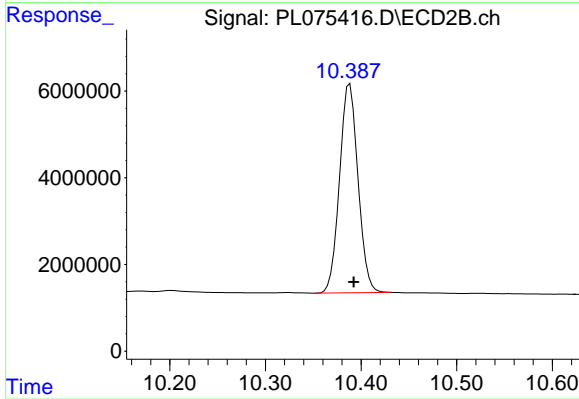
#26 Chlordane-4
R.T.: 8.475 min
Delta R.T.: -0.008 min
Response: 34617779
Conc: 305.03 ng/ml



#26 Chlordane-4
R.T.: 7.417 min
Delta R.T.: -0.003 min
Response: 89041812
Conc: 471.36 ng/ml



#28 Decachlorobiphenyl
R.T.: 11.640 min
Delta R.T.: -0.001 min
Response: 26914104
Conc: 50.20 ng/ml



#28 Decachlorobiphenyl
R.T.: 10.388 min
Delta R.T.: -0.004 min
Response: 64894953
Conc: 47.29 ng/ml