

Data Path : Z:\pestpcbsrv\HPCHEM1\ECD_L\Data\PL060319\
 Data File : PL049222.D
 Signal(s) : Signal #1: ECD1A.ch Signal #2: ECD2B.ch
 Acq On : 03 Jun 2019 13:30
 Operator : SM\AJ
 Sample : K3097-07
 Misc :
 ALS Vial : 18 Sample Multiplier: 1

Instrument :
 ECD_L
 ClientSampleId :
 0427-HR-7(HACKENSACK)

Integration File signal 1: autoint1.e
 Integration File signal 2: autoint2.e
 Quant Time: Jun 04 01:50:13 2019
 Quant Method : Z:\pestpcbsrv\HPCHEM1\ECD_L\methods\PL053019.M
 Quant Title : GC Extractables
 QLast Update : Fri May 31 01:35:35 2019
 Response via : Initial Calibration
 Integrator: ChemStation

Volume Inj. : 1 µl
 Signal #1 Phase : ZB-MR2 Signal #2 Phase: ZB-MR1
 Signal #1 Info : 30M x 0.32mm x0.2 Signal #2 Info : 30M x 0.32mm x0.5µm

Compound	RT#1	RT#2	Resp#1	Resp#2	ng/ml	ng/ml

System Monitoring Compounds						
1) SA Tetrachlo...	3.323	3.936	209.4E6	52355690	19.005	18.122
28) SA Decachlor...	7.991	8.971	157.8E6	45618361	12.408	13.659

Target Compounds

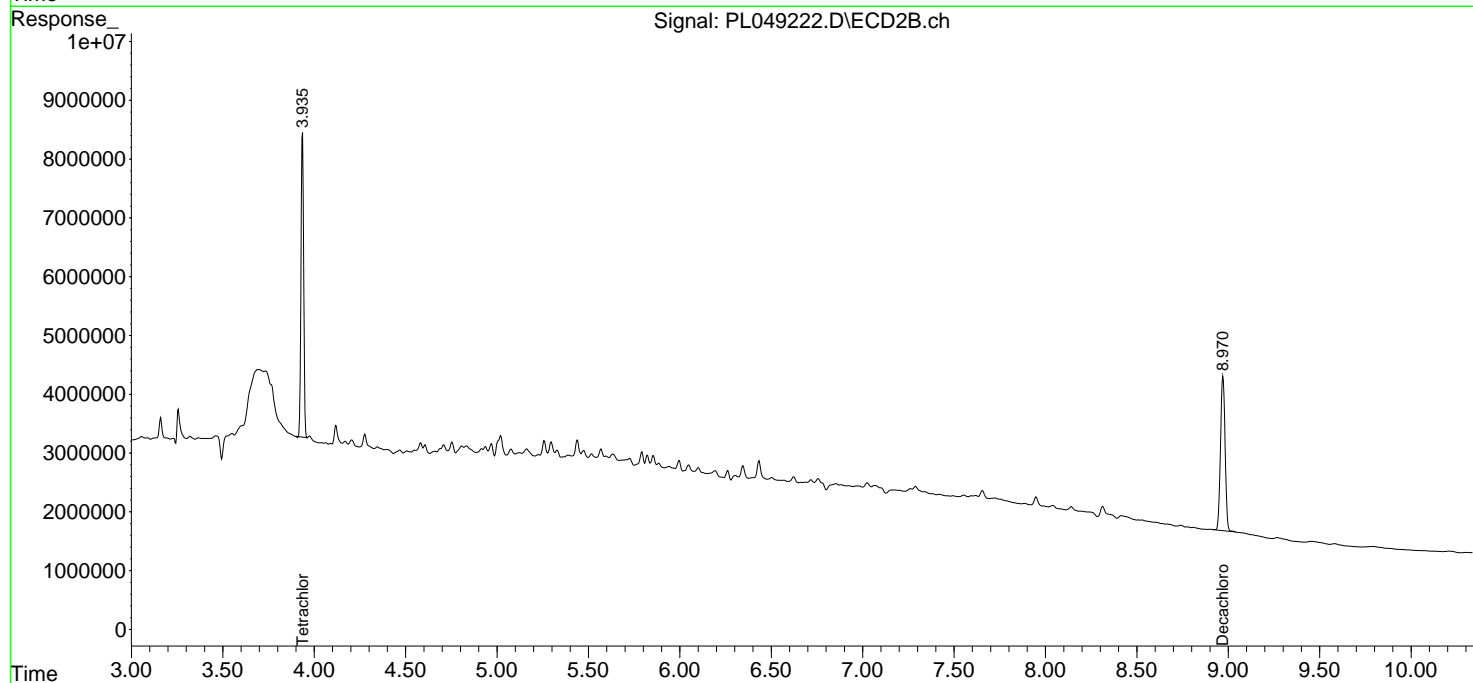
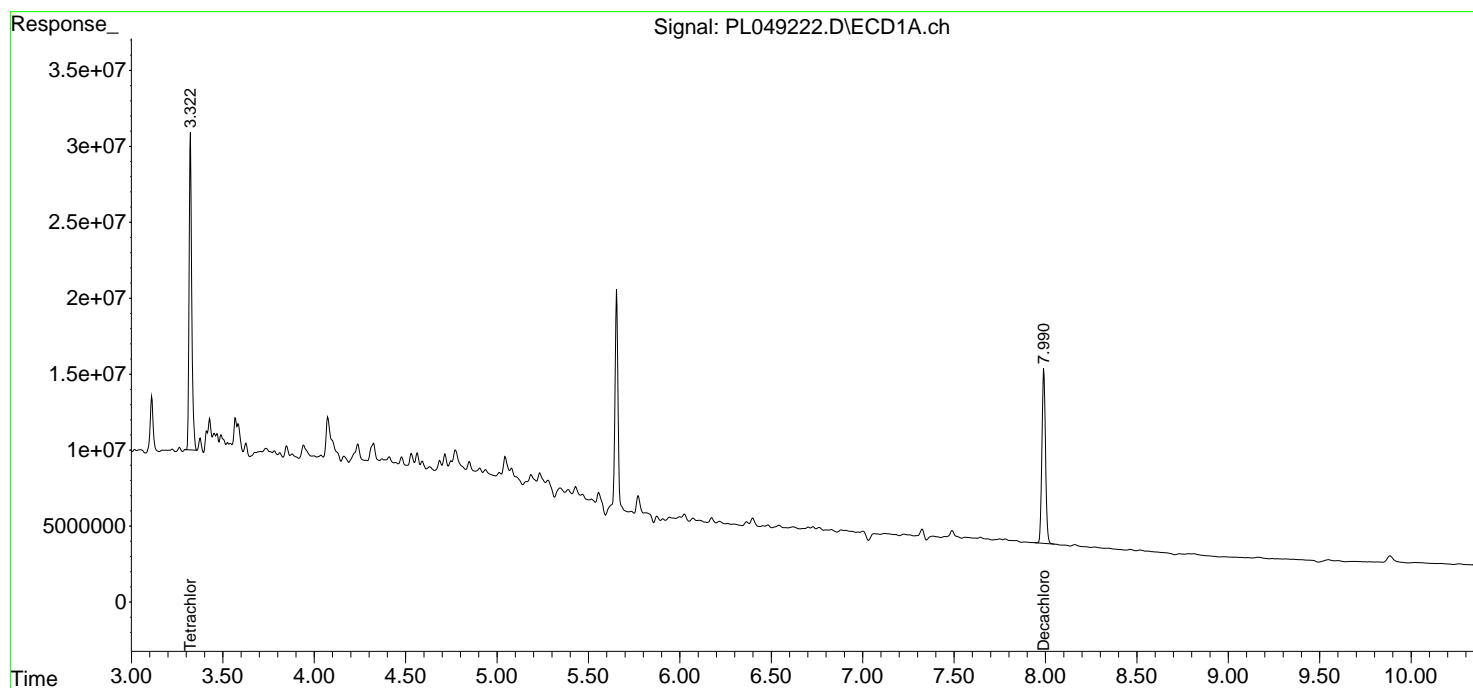
(f)=RT Delta > 1/2 Window (#)=Amounts differ by > 25% (m)=manual int.

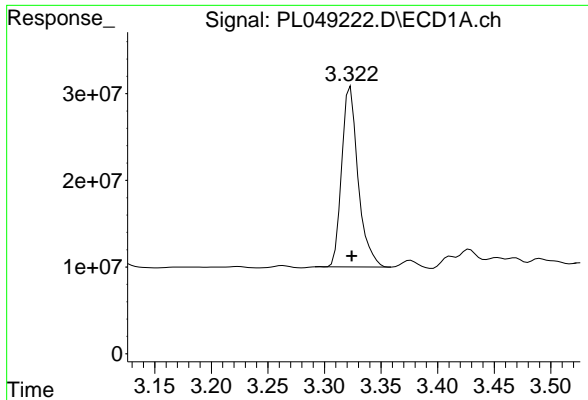
Data Path : Z:\pestpcbsrv\HPCHEM1\ECD_L\Data\PL060319\
Data File : PL049222.D
Signal(s) : Signal #1: ECD1A.ch Signal #2: ECD2B.ch
Acq On : 03 Jun 2019 13:30
Operator : SM\AJ
Sample : K3097-07
Misc :
ALS Vial : 18 Sample Multiplier: 1

Instrument :
ECD_L
ClientSampleId :
0427-HR-7(HACKENSACK)

Integration File signal 1: autoint1.e
Integration File signal 2: autoint2.e
Quant Time: Jun 04 01:50:13 2019
Quant Method : Z:\pestpcbsrv\HPCHEM1\ECD_L\methods\PL053019.M
Quant Title : GC Extractables
QLast Update : Fri May 31 01:35:35 2019
Response via : Initial Calibration
Integrator: ChemStation

Volume Inj. : 1 µl
Signal #1 Phase : ZB-MR2 Signal #2 Phase: ZB-MR1
Signal #1 Info : 30M x 0.32mm x0.2 Signal #2 Info : 30M x 0.32mm x0.5µm

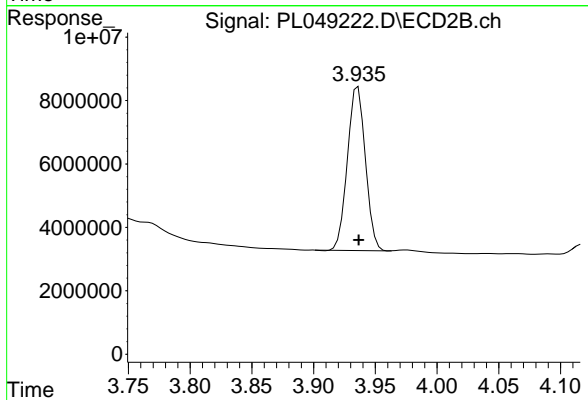




#1 Tetrachloro-m-xylene

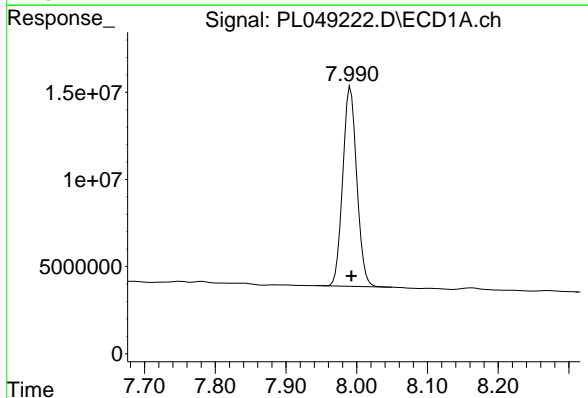
R.T.: 3.323 min
 Delta R.T.: 0.000 min
 Response: 209415947
 Conc: 19.01 ng/ml

Instrument :
 ECD_L
 ClientSampleId :
 0427-HR-7(HACKENSACK)



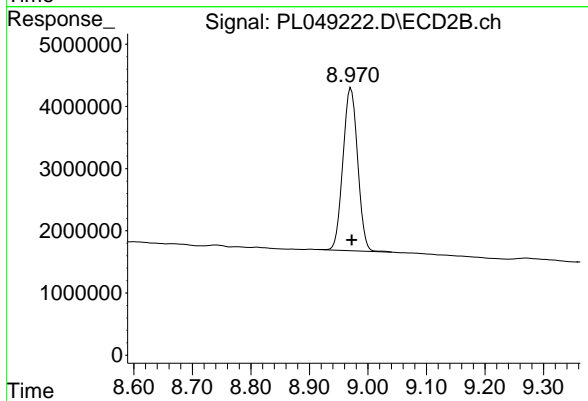
#1 Tetrachloro-m-xylene

R.T.: 3.936 min
 Delta R.T.: 0.000 min
 Response: 52355690
 Conc: 18.12 ng/ml



#28 Decachlorobiphenyl

R.T.: 7.991 min
 Delta R.T.: -0.001 min
 Response: 157768109
 Conc: 12.41 ng/ml



#28 Decachlorobiphenyl

R.T.: 8.971 min
 Delta R.T.: -0.001 min
 Response: 45618361
 Conc: 13.66 ng/ml