

Data Path : Z:\pestpcbsrv\HPCHEM1\ECD\_L\Data\PL060319\  
 Data File : PL049223.D  
 Signal(s) : Signal #1: ECD1A.ch Signal #2: ECD2B.ch  
 Acq On : 03 Jun 2019 13:45  
 Operator : SM\AJ  
 Sample : K3097-08  
 Misc :  
 ALS Vial : 19 Sample Multiplier: 1

**Instrument :**  
 ECD\_L  
**ClientSampleId :**  
 0428-HR-8(HACKENSACK)

Integration File signal 1: autoint1.e  
 Integration File signal 2: autoint2.e  
 Quant Time: Jun 04 01:50:32 2019  
 Quant Method : Z:\pestpcbsrv\HPCHEM1\ECD\_L\methods\PL053019.M  
 Quant Title : GC Extractables  
 QLast Update : Fri May 31 01:35:35 2019  
 Response via : Initial Calibration  
 Integrator: ChemStation

Volume Inj. : 1 µl  
 Signal #1 Phase : ZB-MR2 Signal #2 Phase: ZB-MR1  
 Signal #1 Info : 30M x 0.32mm x0.2 Signal #2 Info : 30M x 0.32mm x0.5µm

| Compound                    | RT#1  | RT#2  | Resp#1  | Resp#2   | ng/ml  | ng/ml  |
|-----------------------------|-------|-------|---------|----------|--------|--------|
| -----                       |       |       |         |          |        |        |
| System Monitoring Compounds |       |       |         |          |        |        |
| 1) SA Tetrachlo...          | 3.325 | 3.936 | 212.3E6 | 52971005 | 19.270 | 18.335 |
| 28) SA Decachlor...         | 7.993 | 8.972 | 191.7E6 | 54774426 | 15.077 | 16.401 |

Target Compounds

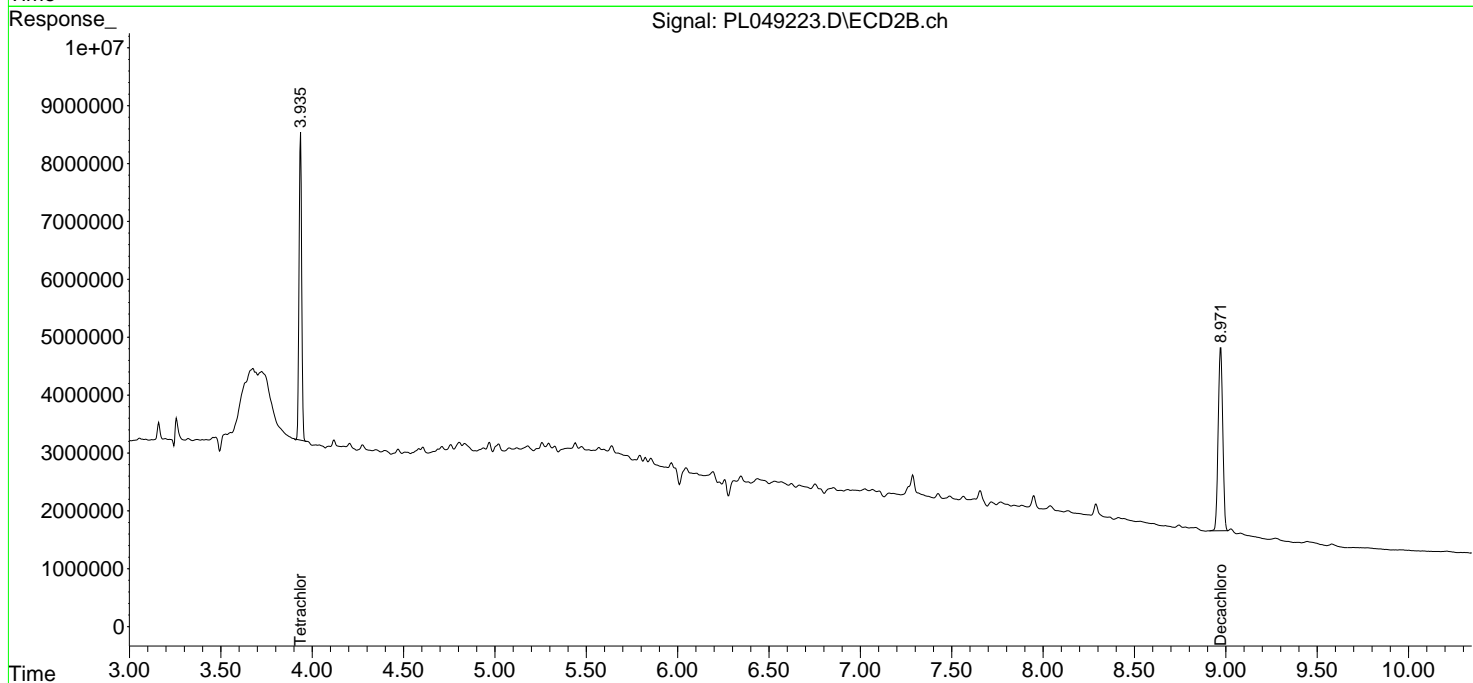
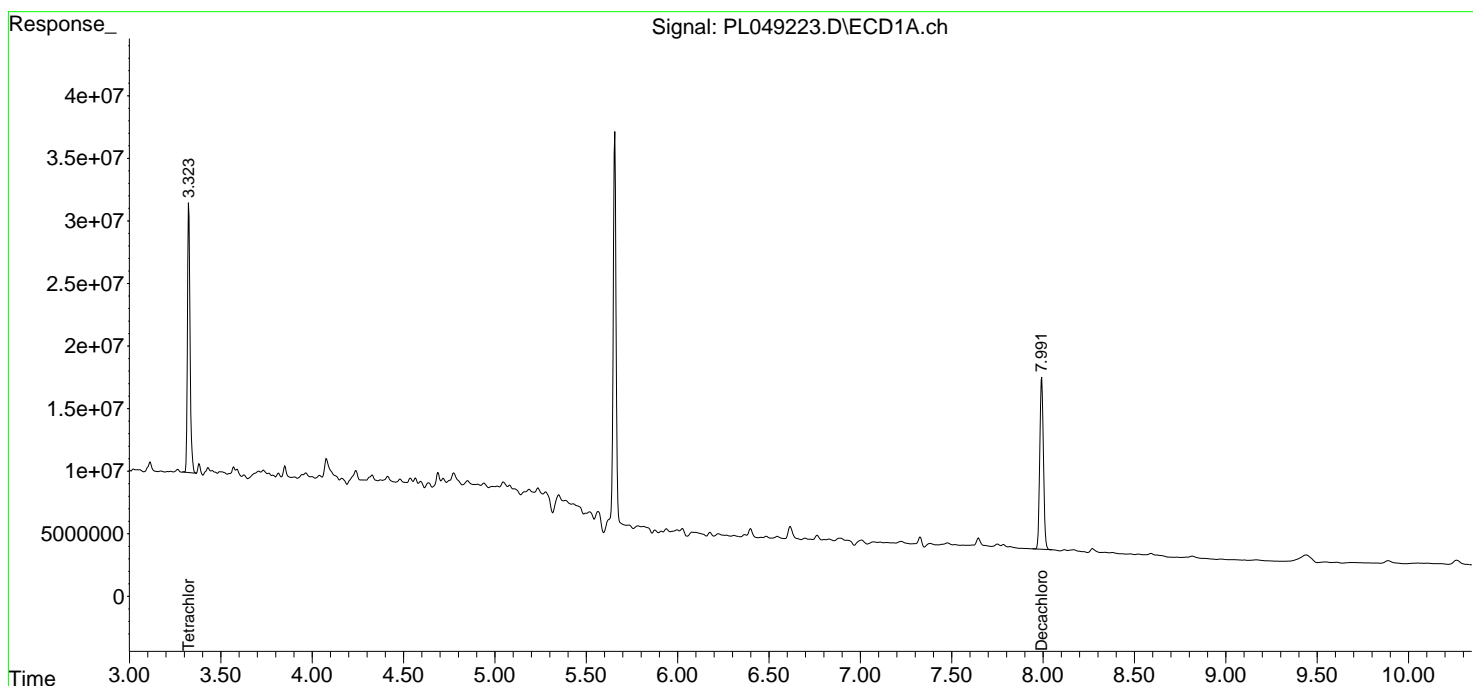
(f)=RT Delta > 1/2 Window (#)=Amounts differ by > 25% (m)=manual int.

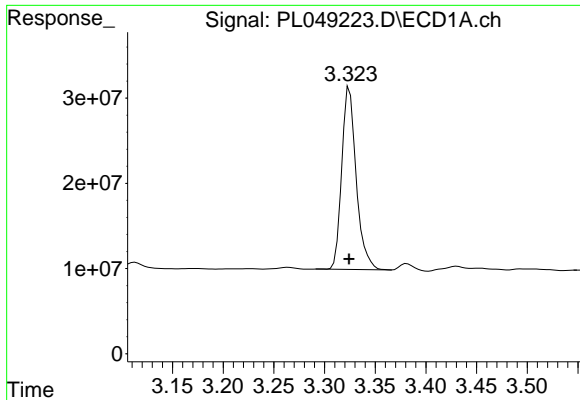
Data Path : Z:\pestpcbsrv\HPCHEM1\ECD\_L\Data\PL060319\  
 Data File : PL049223.D  
 Signal(s) : Signal #1: ECD1A.ch Signal #2: ECD2B.ch  
 Acq On : 03 Jun 2019 13:45  
 Operator : SM\AJ  
 Sample : K3097-08  
 Misc :  
 ALS Vial : 19 Sample Multiplier: 1

Instrument :  
 ECD\_L  
 ClientSampleId :  
 0428-HR-8(HACKENSACK)

Integration File signal 1: autoint1.e  
 Integration File signal 2: autoint2.e  
 Quant Time: Jun 04 01:50:32 2019  
 Quant Method : Z:\pestpcbsrv\HPCHEM1\ECD\_L\methods\PL053019.M  
 Quant Title : GC Extractables  
 QLast Update : Fri May 31 01:35:35 2019  
 Response via : Initial Calibration  
 Integrator: ChemStation

Volume Inj. : 1 µl  
 Signal #1 Phase : ZB-MR2 Signal #2 Phase: ZB-MR1  
 Signal #1 Info : 30M x 0.32mm x0.2 Signal #2 Info : 30M x 0.32mm x0.5µm

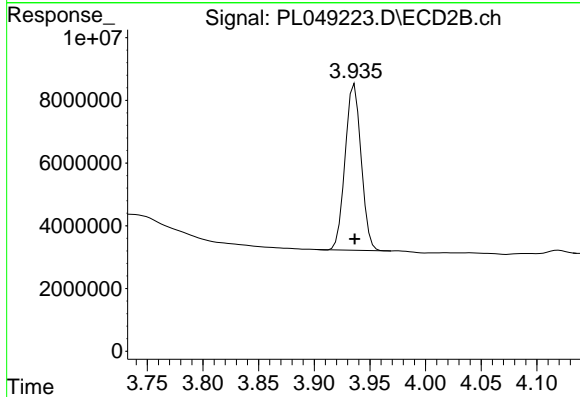




#1 Tetrachloro-m-xylene

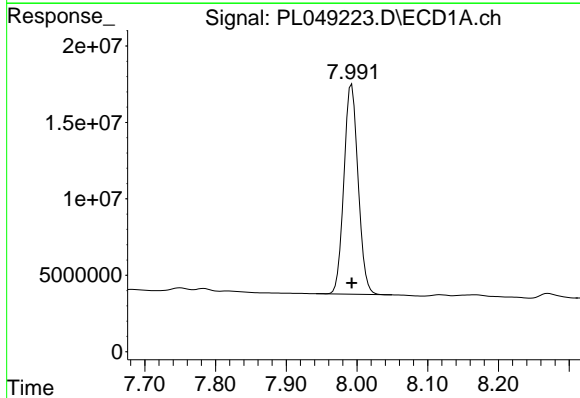
R.T.: 3.325 min  
 Delta R.T.: 0.000 min  
 Response: 212331636  
 Conc: 19.27 ng/ml

**Instrument :**  
 ECD\_L  
**ClientSampleId :**  
 0428-HR-8(HACKENSACK)



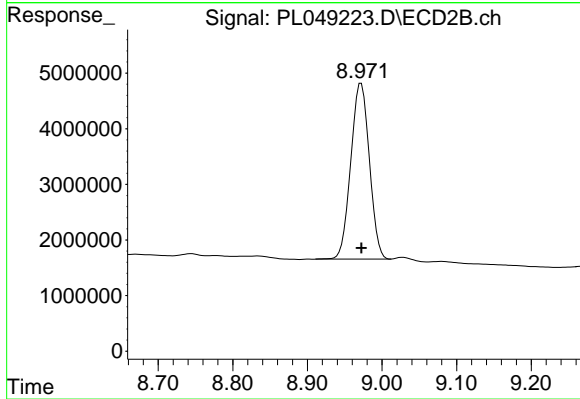
#1 Tetrachloro-m-xylene

R.T.: 3.936 min  
 Delta R.T.: 0.000 min  
 Response: 52971005  
 Conc: 18.34 ng/ml



#28 Decachlorobiphenyl

R.T.: 7.993 min  
 Delta R.T.: 0.000 min  
 Response: 191715191  
 Conc: 15.08 ng/ml



#28 Decachlorobiphenyl

R.T.: 8.972 min  
 Delta R.T.: 0.000 min  
 Response: 54774426  
 Conc: 16.40 ng/ml