

Data Path : Z:\pestpcbsrv\HPCHEM1\ECD_L\Data\PL060320\
 Data File : PL059086.D
 Signal(s) : Signal #1: ECD1A.ch Signal #2: ECD2B.ch
 Acq On : 03 Jun 2020 10:30
 Operator : AJ\MA
 Sample : I.BLK
 Misc :
 ALS Vial : 2 Sample Multiplier: 1

Instrument :
 ECD_L
 ClientSampleId :
 I.BLK

Integration File signal 1: autoint1.e
 Integration File signal 2: autoint2.e
 Quant Time: Jun 03 13:37:46 2020
 Quant Method : Z:\pestpcbsrv\HPCHEM1\ECD_L\methods\PL060320.M
 Quant Title : GC Extractables
 QLast Update : Wed Jun 03 13:09:31 2020
 Response via : Initial Calibration
 Integrator: ChemStation

Volume Inj. : 1 µl
 Signal #1 Phase : ZB-MR2 Signal #2 Phase: ZB-MR1
 Signal #1 Info : 30M x 0.32mm x0.2 Signal #2 Info : 30M x 0.32mm x0.5µm

Compound	RT#1	RT#2	Resp#1	Resp#2	ng/ml	ng/ml

System Monitoring Compounds						
1) SA Tetrachlo...	3.521	4.072	38844375	58240333	22.495	22.384
28) SA Decachlor...	8.297	9.185	37052742	53396384	22.533	22.525

Target Compounds

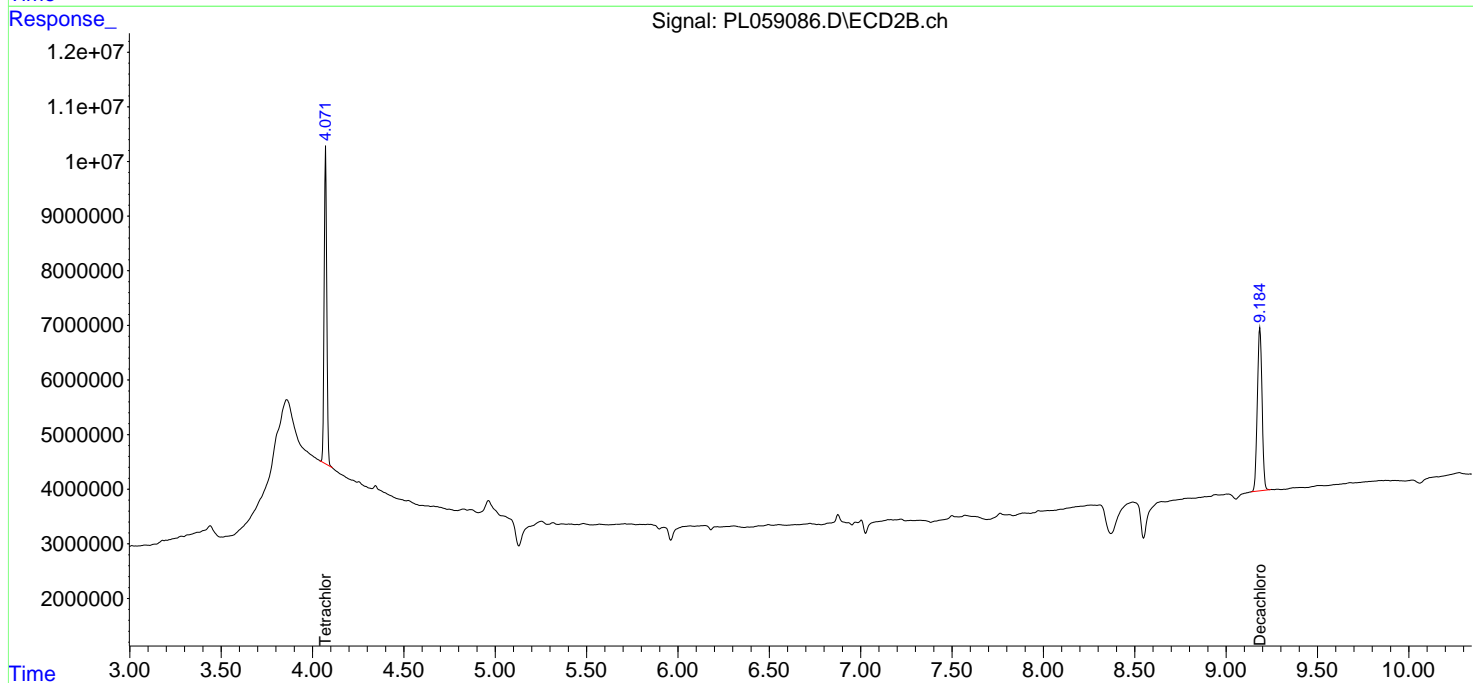
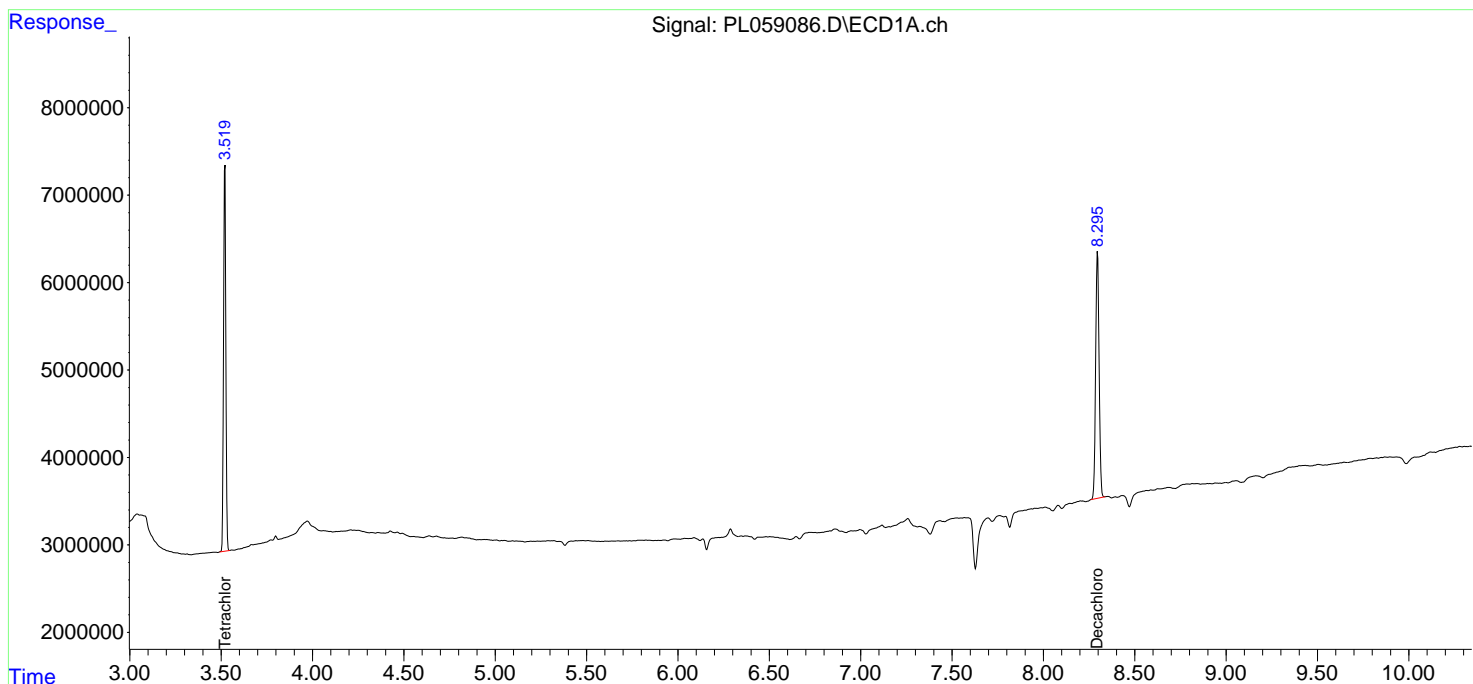
(f)=RT Delta > 1/2 Window (#)=Amounts differ by > 25% (m)=manual int.

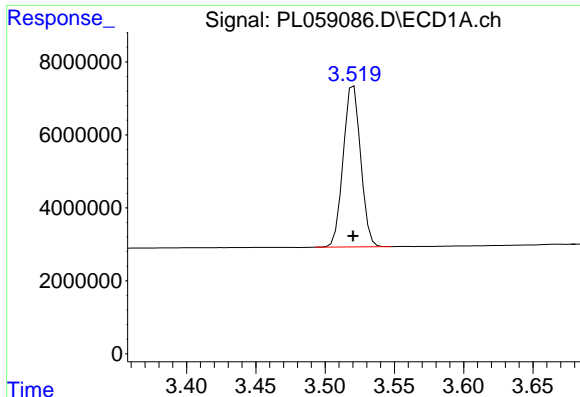
Data Path : Z:\pestpcbsrv\HPCHEM1\ECD_L\Data\PL060320\
 Data File : PL059086.D
 Signal(s) : Signal #1: ECD1A.ch Signal #2: ECD2B.ch
 Acq On : 03 Jun 2020 10:30
 Operator : AJ\MA
 Sample : I.BLK
 Misc :
 ALS Vial : 2 Sample Multiplier: 1

Instrument :
 ECD_L
 ClientSampled :
 I.BLK

Integration File signal 1: autoint1.e
 Integration File signal 2: autoint2.e
 Quant Time: Jun 03 13:37:46 2020
 Quant Method : Z:\pestpcbsrv\HPCHEM1\ECD_L\methods\PL060320.M
 Quant Title : GC Extractables
 QLast Update : Wed Jun 03 13:09:31 2020
 Response via : Initial Calibration
 Integrator: ChemStation

Volume Inj. : 1 µl
 Signal #1 Phase : ZB-MR2 Signal #2 Phase: ZB-MR1
 Signal #1 Info : 30M x 0.32mm x0.2 Signal #2 Info : 30M x 0.32mm x0.5µm

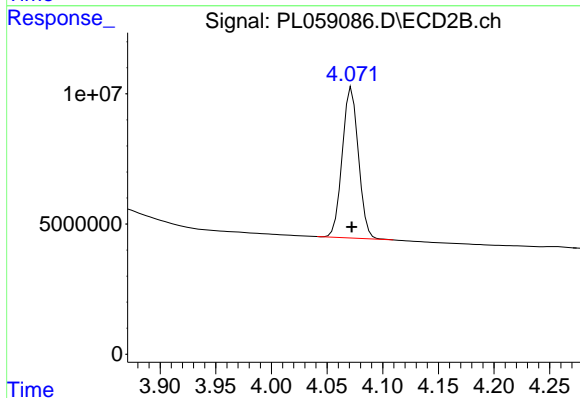




#1 Tetrachloro-m-xylene

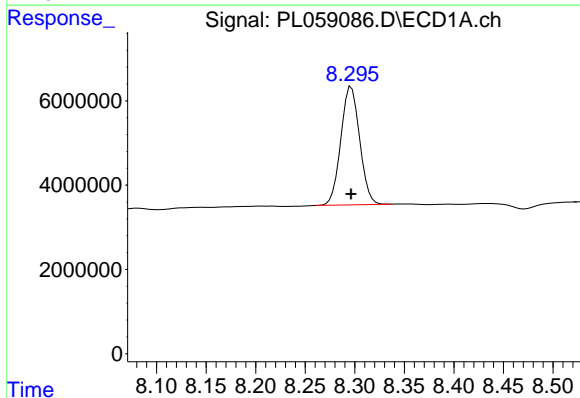
R.T.: 3.521 min
 Delta R.T.: 0.000 min
 Response: 38844375
 Conc: 22.49 ng/ml

Instrument :
 ECD_L
 ClientSampled :
 I.BLK



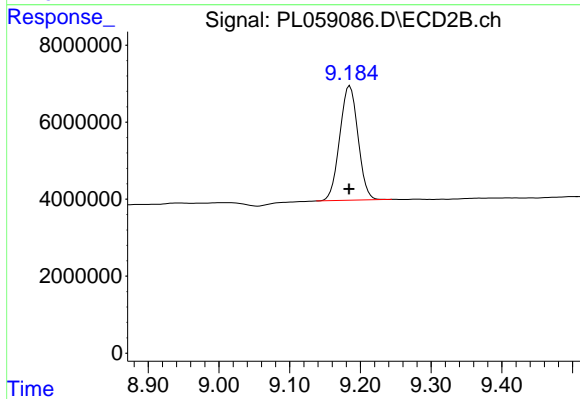
#1 Tetrachloro-m-xylene

R.T.: 4.072 min
 Delta R.T.: 0.000 min
 Response: 58240333
 Conc: 22.38 ng/ml



#28 Decachlorobiphenyl

R.T.: 8.297 min
 Delta R.T.: 0.000 min
 Response: 37052742
 Conc: 22.53 ng/ml



#28 Decachlorobiphenyl

R.T.: 9.185 min
 Delta R.T.: 0.001 min
 Response: 53396384
 Conc: 22.53 ng/ml