

Data Path : Z:\pestpcbsrv\HPCHEM1\ECD\_L\Data\PL060320\  
 Data File : PL059104.D  
 Signal(s) : Signal #1: ECD1A.ch Signal #2: ECD2B.ch  
 Acq On : 03 Jun 2020 14:54  
 Operator : AJ\MA  
 Sample : PB129279BS  
 Misc :  
 ALS Vial : 9 Sample Multiplier: 1

Instrument :  
 ECD\_L  
 ClientSampleId :  
 PB129279BS

Integration File signal 1: autoint1.e  
 Integration File signal 2: autoint2.e  
 Quant Time: Jun 04 08:25:01 2020  
 Quant Method : Z:\pestpcbsrv\HPCHEM1\ECD\_L\methods\PL060320.M  
 Quant Title : GC Extractables  
 QLast Update : Thu Jun 04 08:16:22 2020  
 Response via : Initial Calibration  
 Integrator: ChemStation

Volume Inj. : 1 µl  
 Signal #1 Phase : ZB-MR2 Signal #2 Phase: ZB-MR1  
 Signal #1 Info : 30M x 0.32mm x0.2 Signal #2 Info : 30M x 0.32mm x0.5µm

Compound	RT#1	RT#2	Resp#1	Resp#2	ng/ml	ng/ml
-----						
System Monitoring Compounds						
1) SA Tetrachlo...	3.521	4.072	33678808	57223614	19.503	21.993
28) SA Decachlor...	8.297	9.184	34256468	49558085	20.832	20.906
Target Compounds						
2) A alpha-BHC	3.963	4.465	132.2E6	208.0E6	52.800	54.113
3) MA gamma-BHC...	4.248	4.753	117.8E6	197.8E6	53.697	54.202
4) MA Heptachlor	4.555	5.267	114.0E6	188.8E6	54.780	54.758
5) MB Aldrin	4.805	5.575	98169944	174.1E6	55.119	55.313
6) B beta-BHC	4.497	4.921	49662375	84544777	52.265	55.908
7) B delta-BHC	4.705	5.140	67379100	103.3E6	33.857	36.816
8) B Heptachlo...	5.249	5.963	93579047	162.1E6	54.784	58.525
9) A Endosulfan I	5.590	6.322	86188574	155.2E6	55.100	55.449
10) B gamma-Chl...	5.477	6.197	92327101	168.5E6	55.138	56.312
11) B alpha-Chl...	5.536	6.271	91978114	168.7E6	55.135	55.510
12) B 4,4'-DDE	5.700	6.426	85543859	157.8E6	56.253	56.676
13) MA Dieldrin	5.834	6.580	89998516	162.2E6	55.220	55.567
14) MA Endrin	6.092	6.799	83327410	137.7E6	54.996	55.276
15) B Endosulfa...	6.364	7.007	84481362	142.8E6	54.660	54.833
16) A 4,4'-DDD	6.216	6.917	73842692	129.4E6	55.858	55.743
17) MA 4,4'-DDT	6.458	7.217	71577195	126.3E6	56.743	55.461
18) B Endrin al...	6.532	7.131	70813829	123.8E6	53.781	54.170
19) B Endosulfa...	6.745	7.354	75435435	126.5E6	50.636	50.477
20) A Methoxychlor	7.004	7.674	43629859	73369895	56.800	55.641
21) B Endrin ke...	7.238	7.828	95896532	147.7E6	55.228	56.286
22) Mirex	7.431	8.285	66754154	98072000	48.367	49.714
-----						

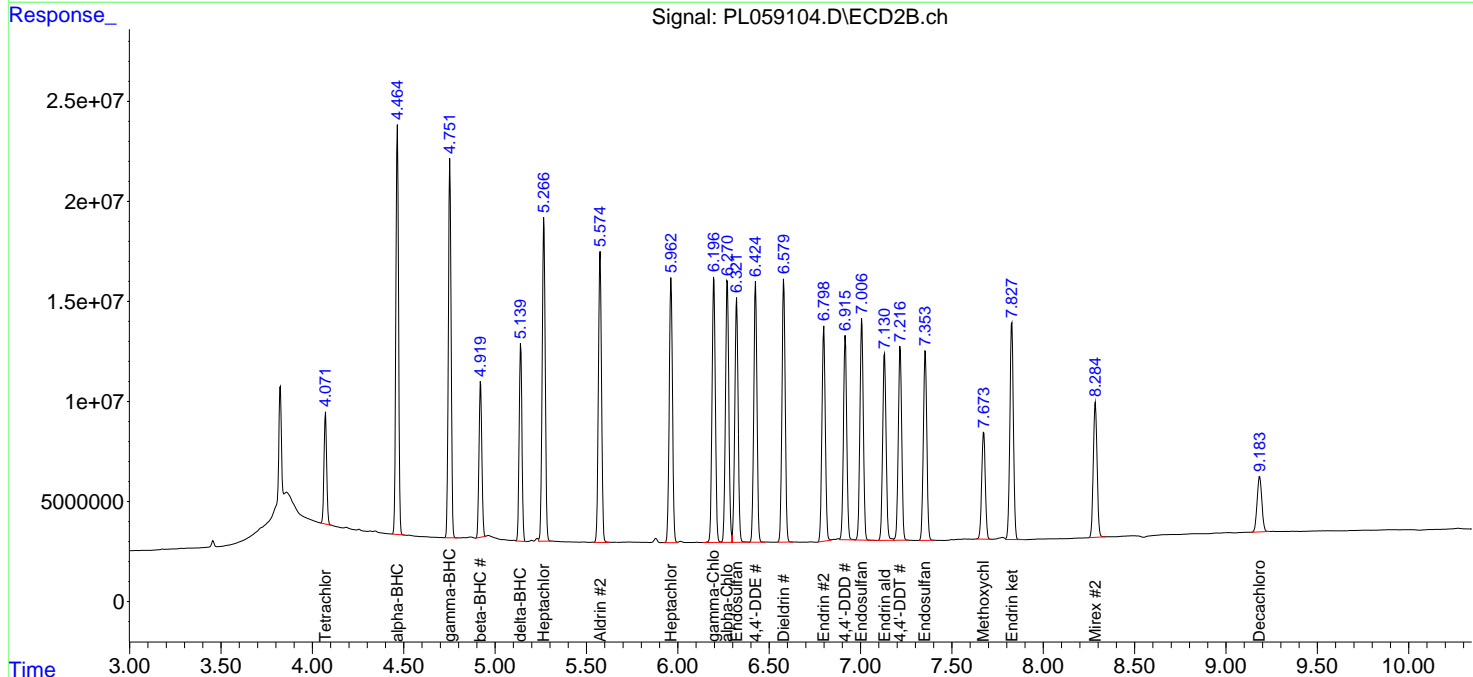
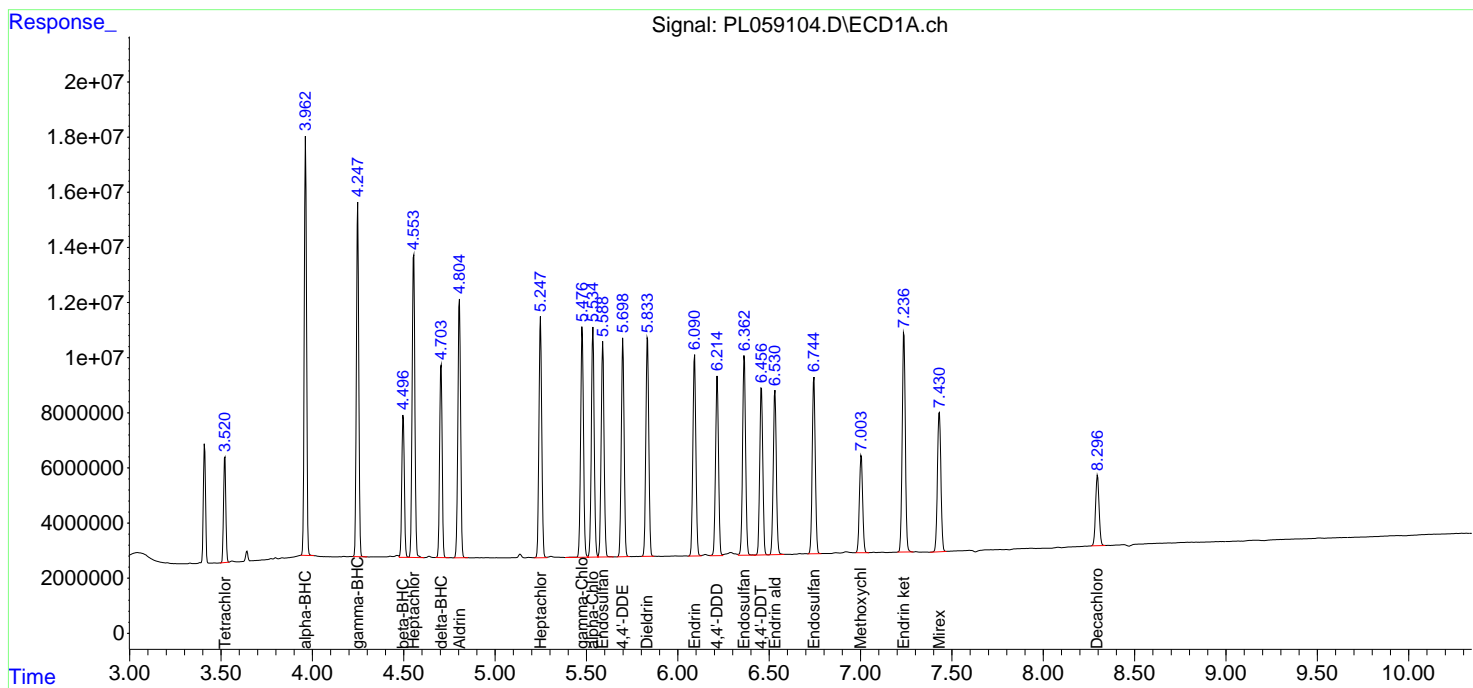
(f)=RT Delta > 1/2 Window (#)=Amounts differ by > 25% (m)=manual int.

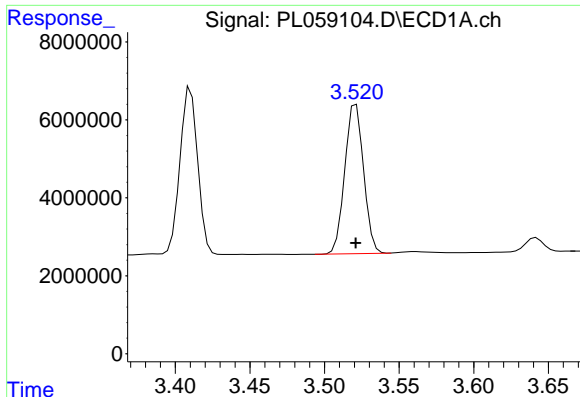
Data Path : Z:\pestpcbsrv\HPCHEM1\ECD\_L\Data\PL060320\  
 Data File : PL059104.D  
 Signal(s) : Signal #1: ECD1A.ch Signal #2: ECD2B.ch  
 Acq On : 03 Jun 2020 14:54  
 Operator : AJ\MA  
 Sample : PB129279BS  
 Misc :  
 ALS Vial : 9 Sample Multiplier: 1

Instrument :  
 ECD\_L  
 Client Sampled :  
 PB129279BS

Integration File signal 1: autoint1.e  
 Integration File signal 2: autoint2.e  
 Quant Time: Jun 04 08:25:01 2020  
 Quant Method : Z:\pestpcbsrv\HPCHEM1\ECD\_L\methods\PL060320.M  
 Quant Title : GC Extractables  
 QLast Update : Thu Jun 04 08:16:22 2020  
 Response via : Initial Calibration  
 Integrator: ChemStation

Volume Inj. : 1 µl  
 Signal #1 Phase : ZB-MR2 Signal #2 Phase: ZB-MR1  
 Signal #1 Info : 30M x 0.32mm x0.2 Signal #2 Info : 30M x 0.32mm x0.5µm

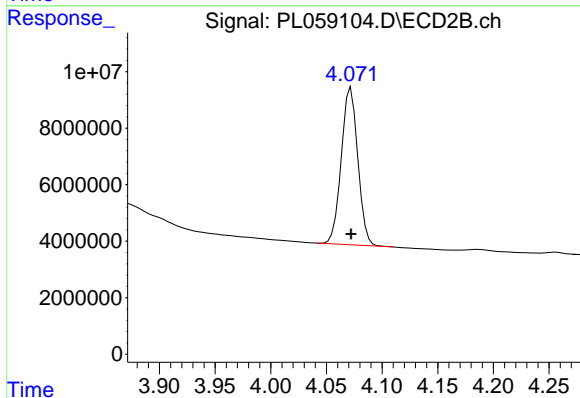




#1 Tetrachloro-m-xylene

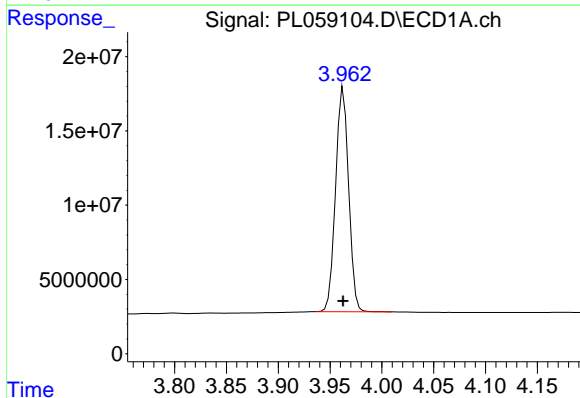
R.T.: 3.521 min  
 Delta R.T.: 0.000 min  
 Response: 33678808  
 Conc: 19.50 ng/ml

Instrument :  
 ECD\_L  
 ClientSampleId :  
 PB129279BS



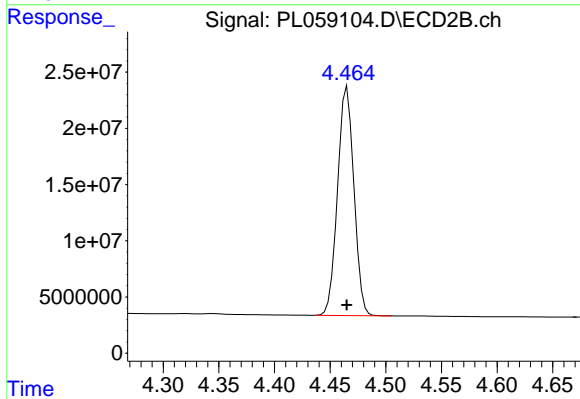
#1 Tetrachloro-m-xylene

R.T.: 4.072 min  
 Delta R.T.: 0.000 min  
 Response: 57223614  
 Conc: 21.99 ng/ml



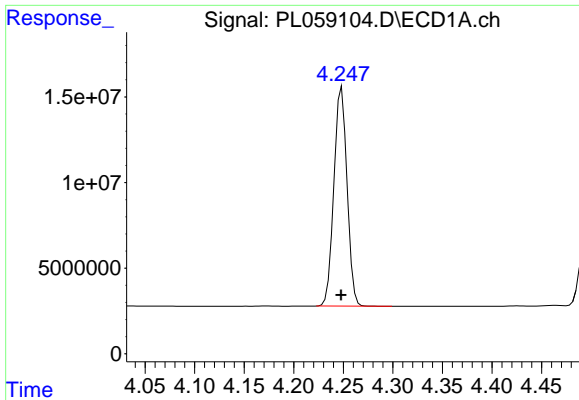
#2 alpha-BHC

R.T.: 3.963 min  
 Delta R.T.: 0.000 min  
 Response: 132175145  
 Conc: 52.80 ng/ml



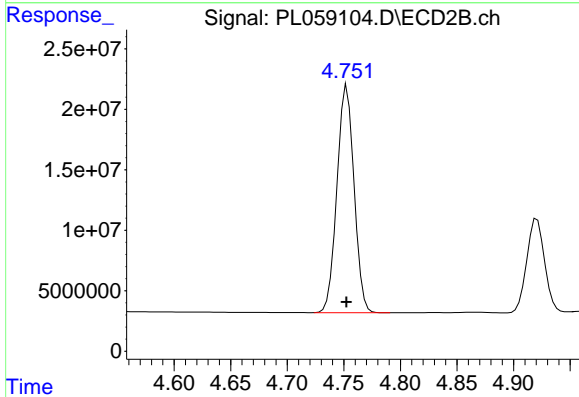
#2 alpha-BHC

R.T.: 4.465 min  
 Delta R.T.: 0.000 min  
 Response: 207987635  
 Conc: 54.11 ng/ml

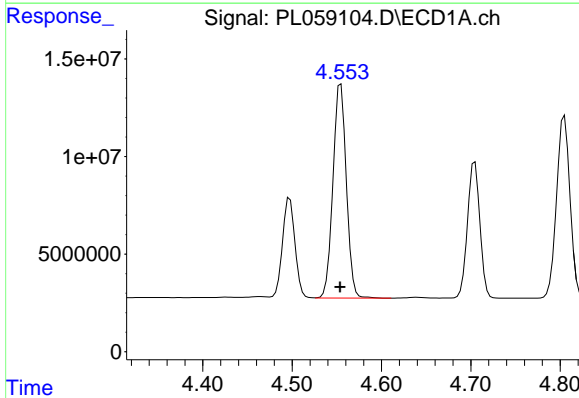


#3 gamma-BHC (Lindane)  
R.T.: 4.248 min  
Delta R.T.: 0.000 min  
Response: 117761581  
Conc: 53.70 ng/ml

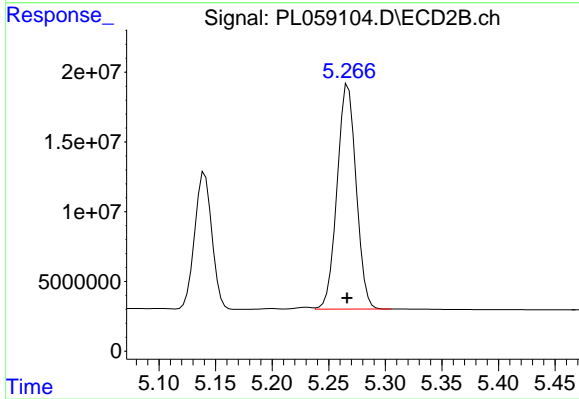
Instrument :  
ECD\_L  
ClientSampled :  
PB129279BS



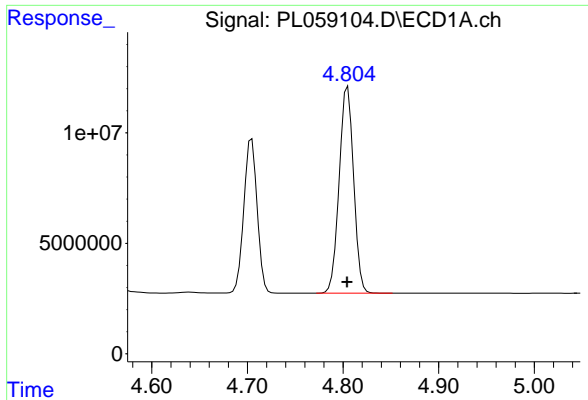
#3 gamma-BHC (Lindane)  
R.T.: 4.753 min  
Delta R.T.: 0.000 min  
Response: 197793085  
Conc: 54.20 ng/ml



#4 Heptachlor  
R.T.: 4.555 min  
Delta R.T.: 0.000 min  
Response: 113977685  
Conc: 54.78 ng/ml



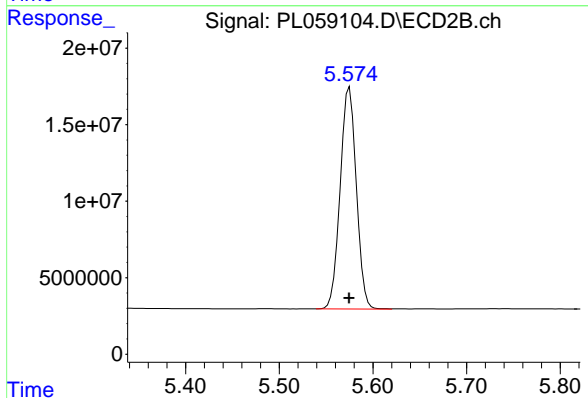
#4 Heptachlor  
R.T.: 5.267 min  
Delta R.T.: 0.000 min  
Response: 188790007  
Conc: 54.76 ng/ml



#5 Aldrin

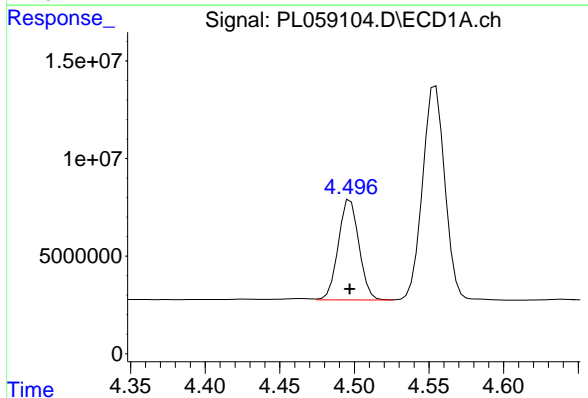
R.T.: 4.805 min  
 Delta R.T.: 0.000 min  
 Response: 98169944  
 Conc: 55.12 ng/ml

Instrument :  
 ECD\_L  
 ClientSampleId :  
 PB129279BS



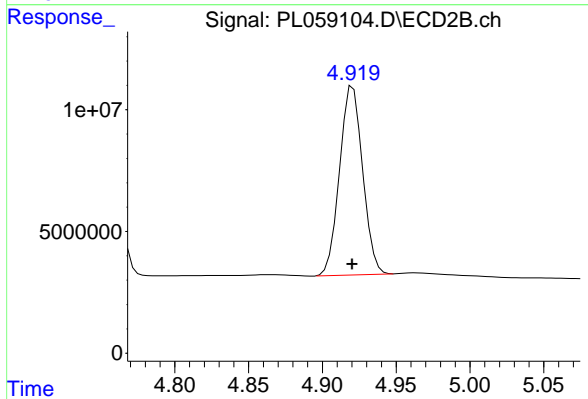
#5 Aldrin

R.T.: 5.575 min  
 Delta R.T.: 0.000 min  
 Response: 174078232  
 Conc: 55.31 ng/ml



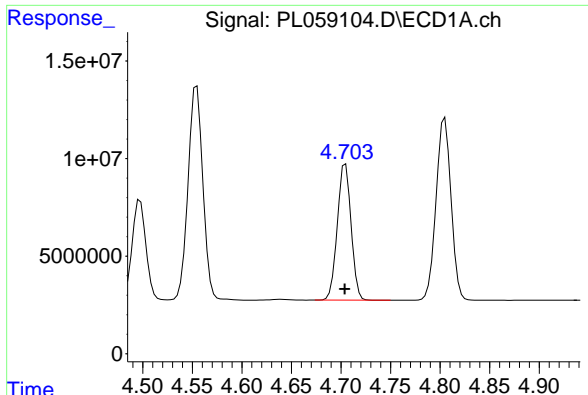
#6 beta-BHC

R.T.: 4.497 min  
 Delta R.T.: 0.000 min  
 Response: 49662375  
 Conc: 52.26 ng/ml



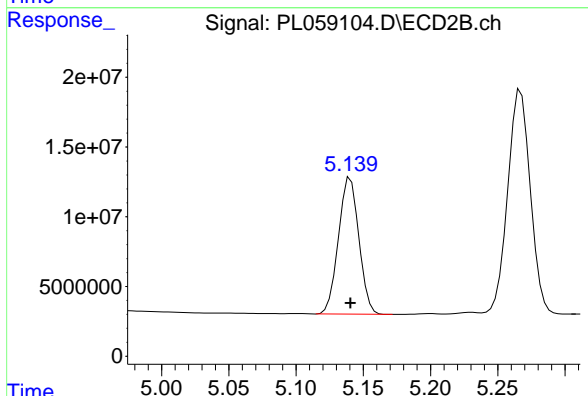
#6 beta-BHC

R.T.: 4.921 min  
 Delta R.T.: 0.000 min  
 Response: 84544777  
 Conc: 55.91 ng/ml

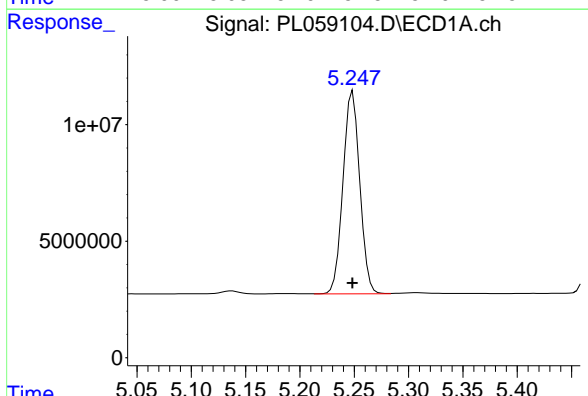


#7 delta-BHC  
 R.T.: 4.705 min  
 Delta R.T.: 0.000 min  
 Response: 67379100  
 Conc: 33.86 ng/ml

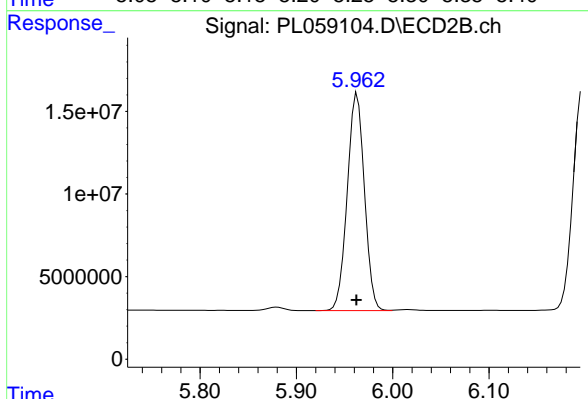
Instrument :  
 ECD\_L  
 ClientSampleId :  
 PB129279BS



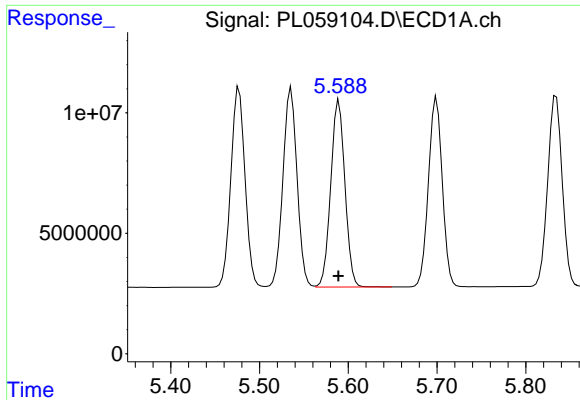
#7 delta-BHC  
 R.T.: 5.140 min  
 Delta R.T.: 0.000 min  
 Response: 103274029  
 Conc: 36.82 ng/ml



#8 Heptachlor epoxide  
 R.T.: 5.249 min  
 Delta R.T.: 0.000 min  
 Response: 93579047  
 Conc: 54.78 ng/ml

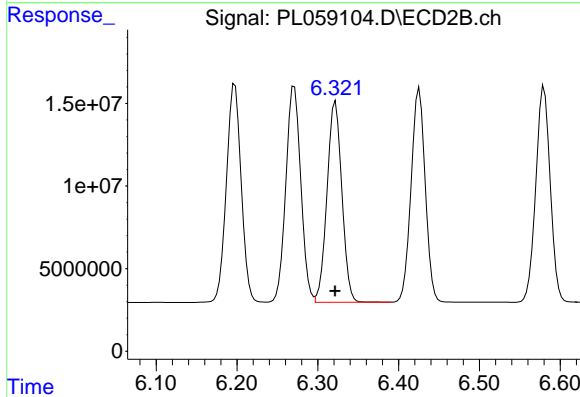


#8 Heptachlor epoxide  
 R.T.: 5.963 min  
 Delta R.T.: 0.000 min  
 Response: 162112899  
 Conc: 58.52 ng/ml

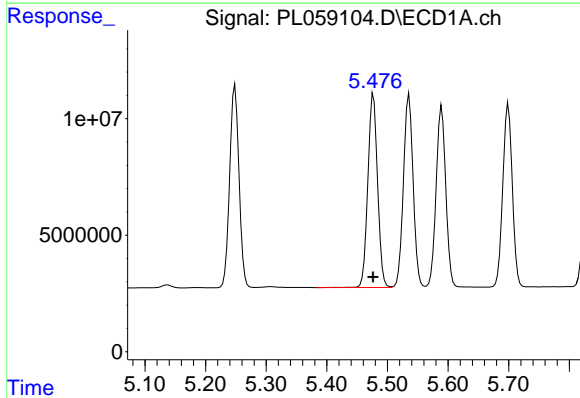


#9 Endosulfan I  
 R.T.: 5.590 min  
 Delta R.T.: 0.000 min  
 Response: 86188574  
 Conc: 55.10 ng/ml

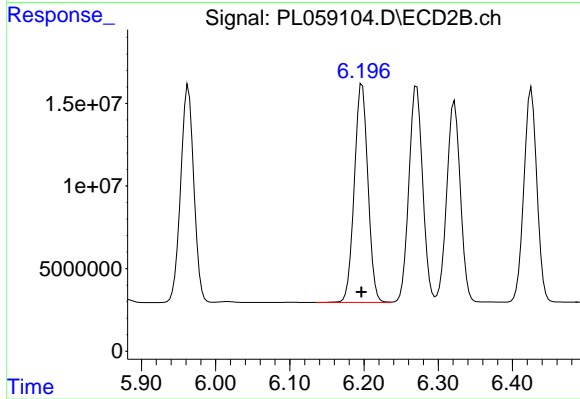
Instrument :  
 ECD\_L  
 ClientSampleId :  
 PB129279BS



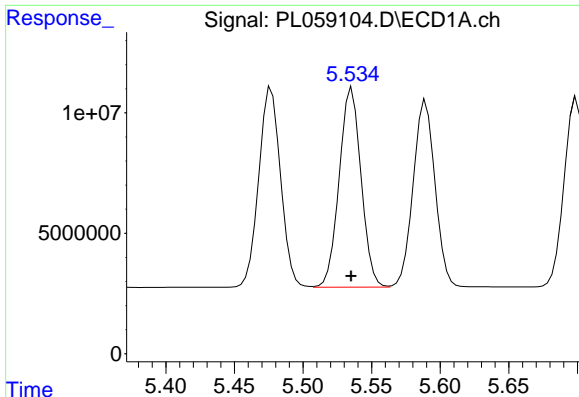
#9 Endosulfan I  
 R.T.: 6.322 min  
 Delta R.T.: 0.000 min  
 Response: 155160284  
 Conc: 55.45 ng/ml



#10 gamma-Chlordane  
 R.T.: 5.477 min  
 Delta R.T.: 0.000 min  
 Response: 92327101  
 Conc: 55.14 ng/ml



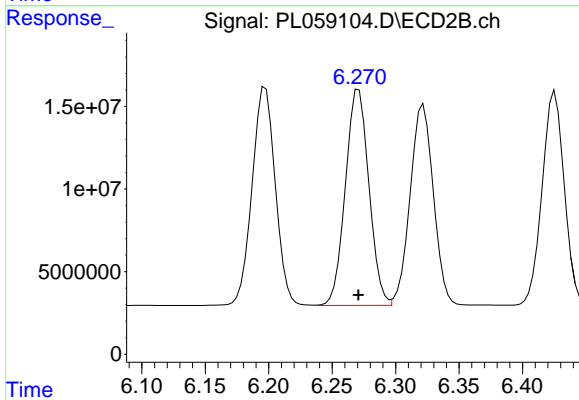
#10 gamma-Chlordane  
 R.T.: 6.197 min  
 Delta R.T.: 0.000 min  
 Response: 168490126  
 Conc: 56.31 ng/ml



#11 alpha-Chlordane

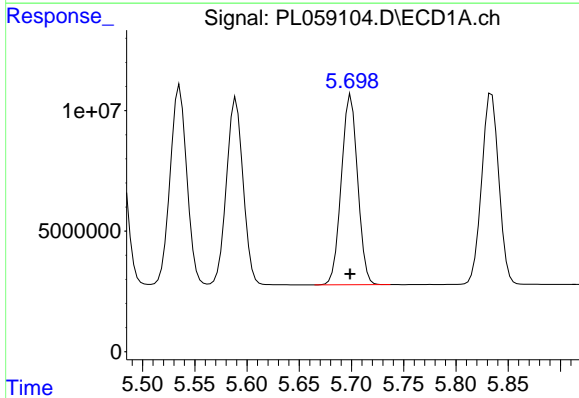
R.T.: 5.536 min  
 Delta R.T.: 0.000 min  
 Response: 91978114  
 Conc: 55.13 ng/ml

Instrument :  
 ECD\_L  
 ClientSampleId :  
 PB129279BS



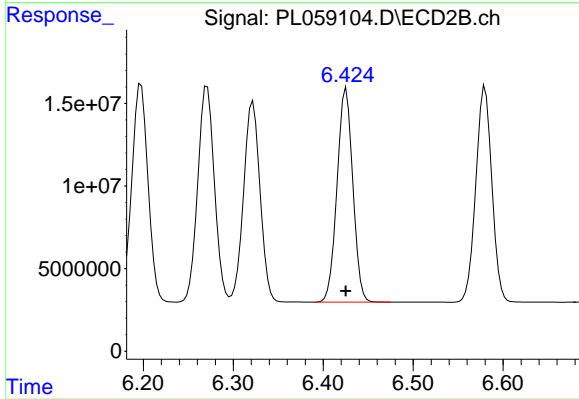
#11 alpha-Chlordane

R.T.: 6.271 min  
 Delta R.T.: 0.000 min  
 Response: 168710564  
 Conc: 55.51 ng/ml



#12 4,4'-DDE

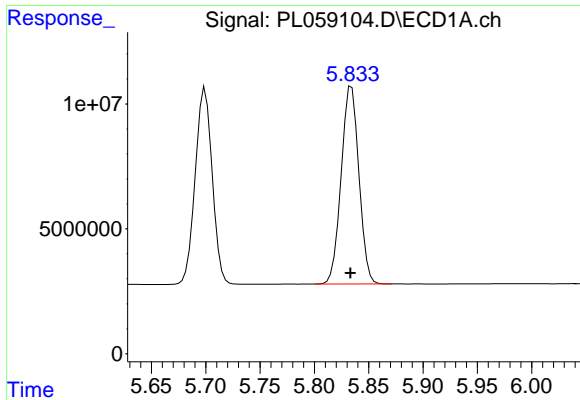
R.T.: 5.700 min  
 Delta R.T.: 0.001 min  
 Response: 85543859  
 Conc: 56.25 ng/ml



#12 4,4'-DDE

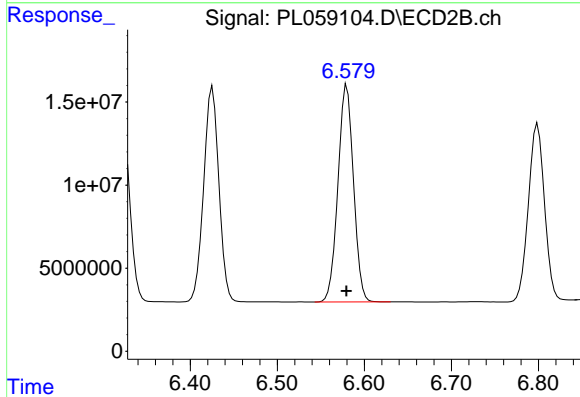
R.T.: 6.426 min  
 Delta R.T.: 0.000 min  
 Response: 157759970  
 Conc: 56.68 ng/ml



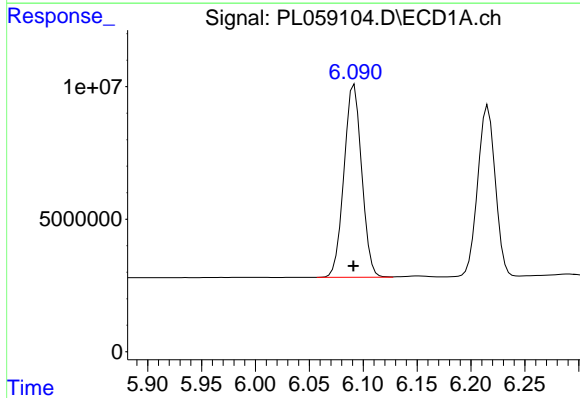


#13 Dieldrin  
 R.T.: 5.834 min  
 Delta R.T.: 0.001 min  
 Response: 89998516  
 Conc: 55.22 ng/ml

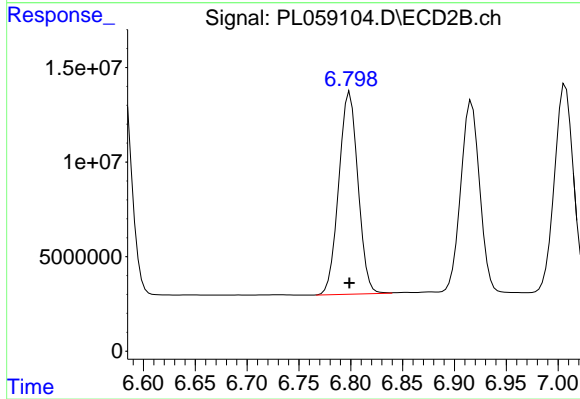
Instrument :  
 ECD\_L  
 ClientSampleId :  
 PB129279BS



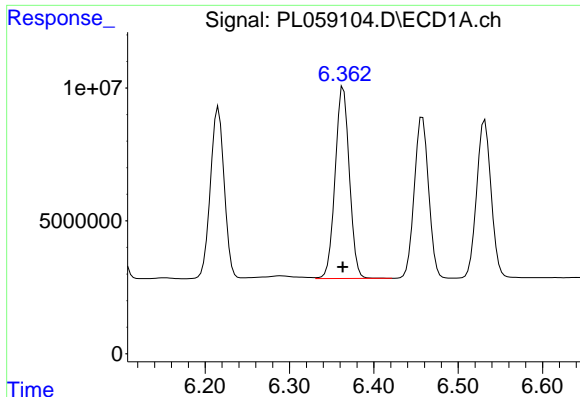
#13 Dieldrin  
 R.T.: 6.580 min  
 Delta R.T.: 0.000 min  
 Response: 162228921  
 Conc: 55.57 ng/ml



#14 Endrin  
 R.T.: 6.092 min  
 Delta R.T.: 0.000 min  
 Response: 83327410  
 Conc: 55.00 ng/ml



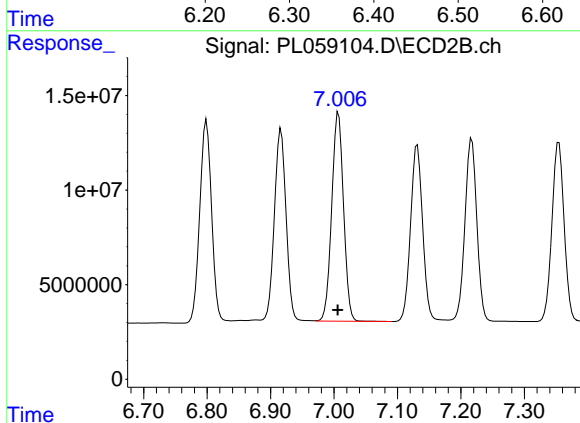
#14 Endrin  
 R.T.: 6.799 min  
 Delta R.T.: 0.000 min  
 Response: 137656806  
 Conc: 55.28 ng/ml



#15 Endosulfan II

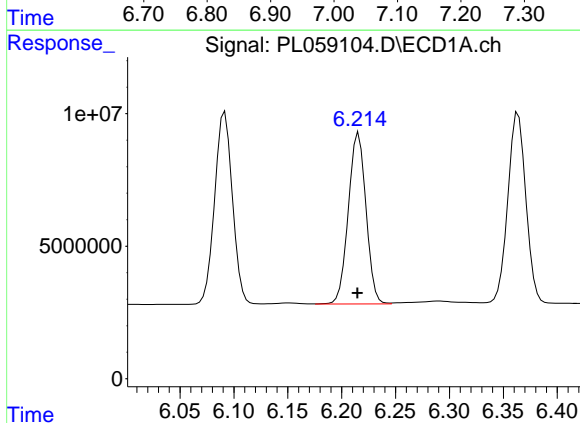
R.T.: 6.364 min  
Delta R.T.: 0.000 min  
Response: 84481362  
Conc: 54.66 ng/ml

Instrument :  
ECD\_L  
ClientSampled :  
PB129279BS



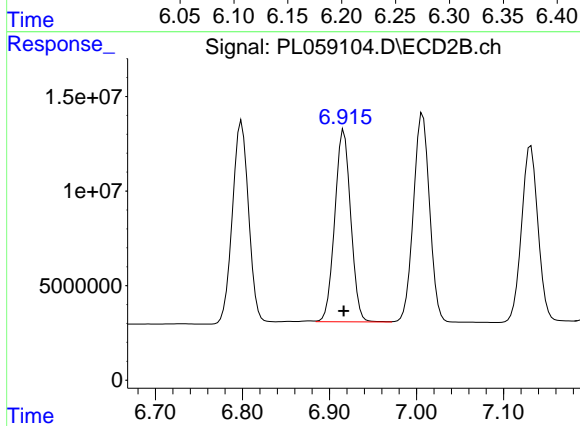
#15 Endosulfan II

R.T.: 7.007 min  
Delta R.T.: 0.000 min  
Response: 142837201  
Conc: 54.83 ng/ml



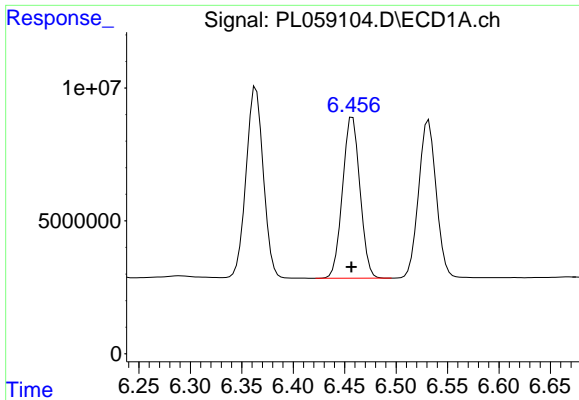
#16 4,4'-DDD

R.T.: 6.216 min  
Delta R.T.: 0.000 min  
Response: 73842692  
Conc: 55.86 ng/ml



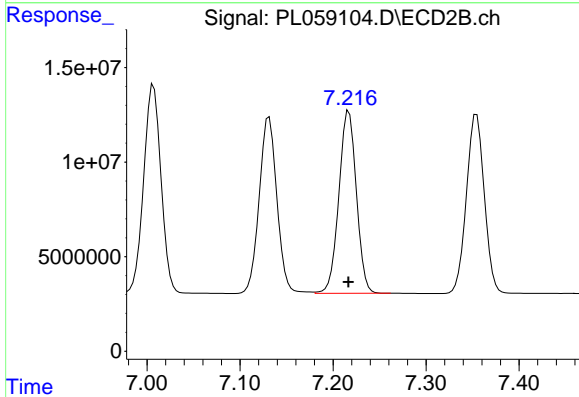
#16 4,4'-DDD

R.T.: 6.917 min  
Delta R.T.: 0.000 min  
Response: 129377320  
Conc: 55.74 ng/ml

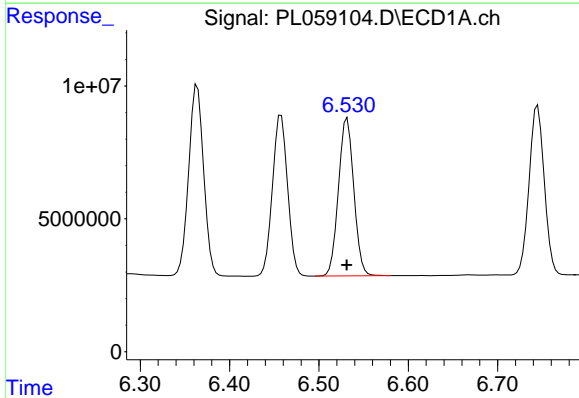


#17 4,4'-DDT  
 R.T.: 6.458 min  
 Delta R.T.: 0.001 min  
 Response: 71577195  
 Conc: 56.74 ng/ml

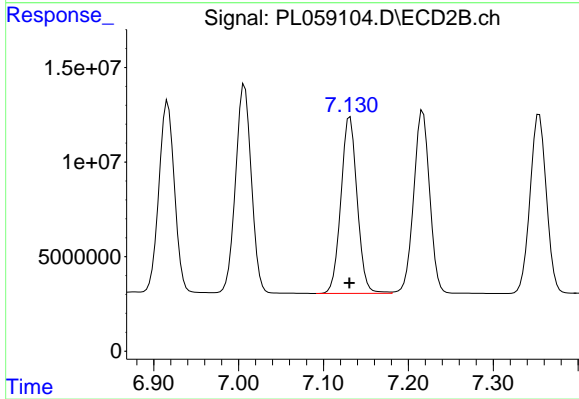
Instrument :  
 ECD\_L  
 ClientSampled :  
 PB129279BS



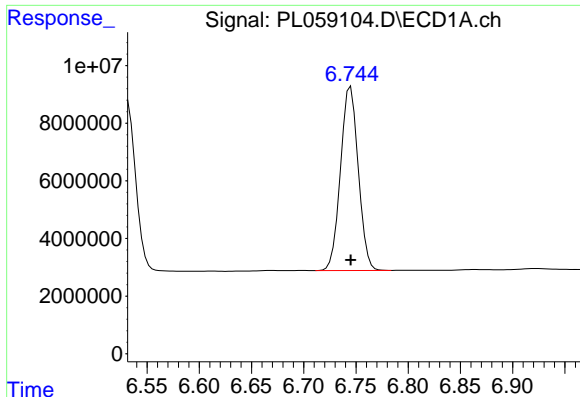
#17 4,4'-DDT  
 R.T.: 7.217 min  
 Delta R.T.: 0.000 min  
 Response: 126295054  
 Conc: 55.46 ng/ml



#18 Endrin aldehyde  
 R.T.: 6.532 min  
 Delta R.T.: 0.000 min  
 Response: 70813829  
 Conc: 53.78 ng/ml



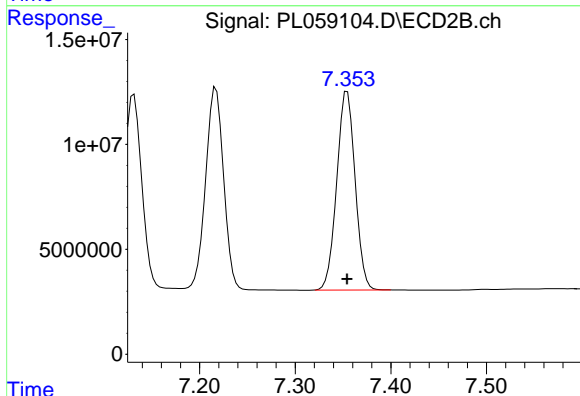
#18 Endrin aldehyde  
 R.T.: 7.131 min  
 Delta R.T.: 0.000 min  
 Response: 123836445  
 Conc: 54.17 ng/ml



#19 Endosulfan Sulfate

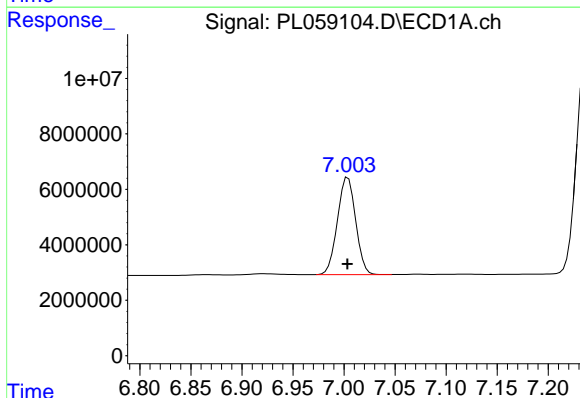
R.T.: 6.745 min  
 Delta R.T.: 0.000 min  
 Response: 75435435  
 Conc: 50.64 ng/ml

Instrument :  
 ECD\_L  
 ClientSampleId :  
 PB129279BS



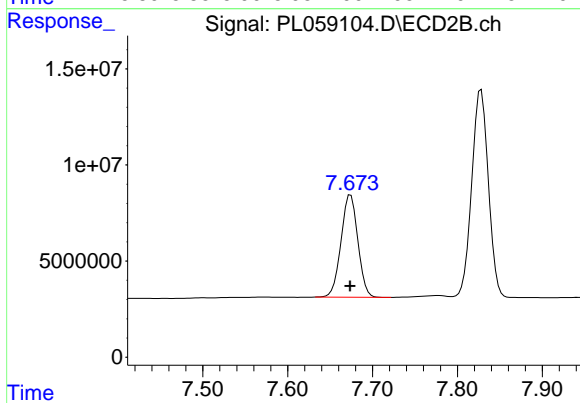
#19 Endosulfan Sulfate

R.T.: 7.354 min  
 Delta R.T.: 0.000 min  
 Response: 126476568  
 Conc: 50.48 ng/ml



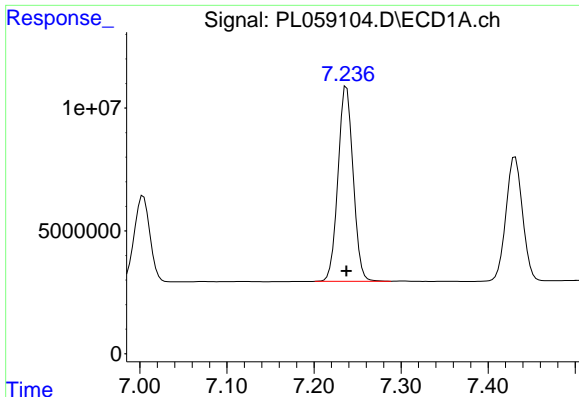
#20 Methoxychlor

R.T.: 7.004 min  
 Delta R.T.: 0.000 min  
 Response: 43629859  
 Conc: 56.80 ng/ml



#20 Methoxychlor

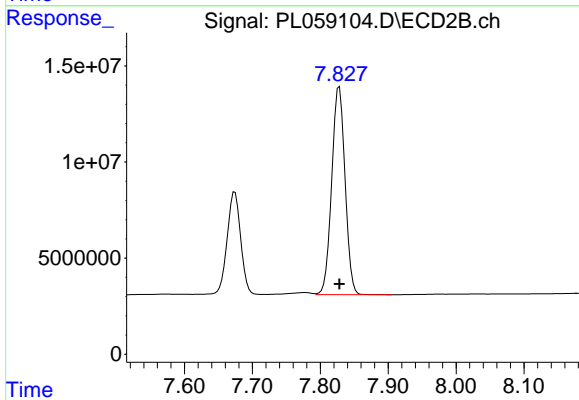
R.T.: 7.674 min  
 Delta R.T.: 0.000 min  
 Response: 73369895  
 Conc: 55.64 ng/ml



#21 Endrin ketone

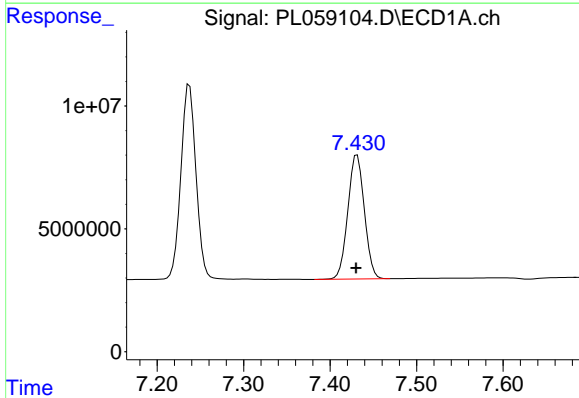
R.T.: 7.238 min  
 Delta R.T.: 0.000 min  
 Response: 95896532  
 Conc: 55.23 ng/ml

Instrument :  
 ECD\_L  
 ClientSampled :  
 PB129279BS



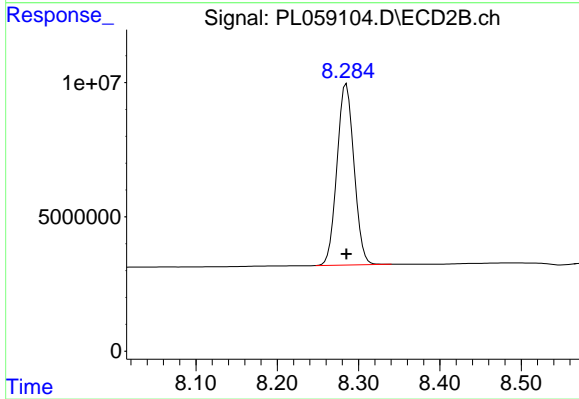
#21 Endrin ketone

R.T.: 7.828 min  
 Delta R.T.: 0.000 min  
 Response: 147677922  
 Conc: 56.29 ng/ml



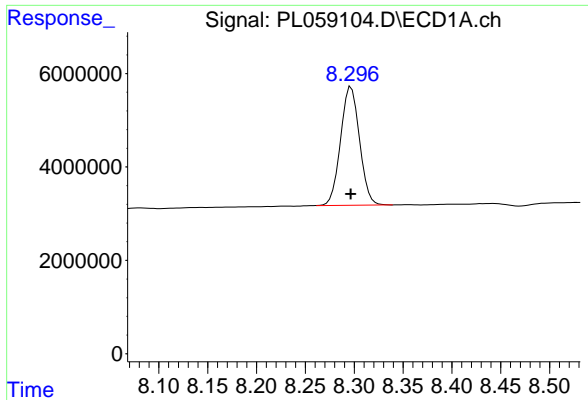
#22 Mirex

R.T.: 7.431 min  
 Delta R.T.: 0.000 min  
 Response: 66754154  
 Conc: 48.37 ng/ml



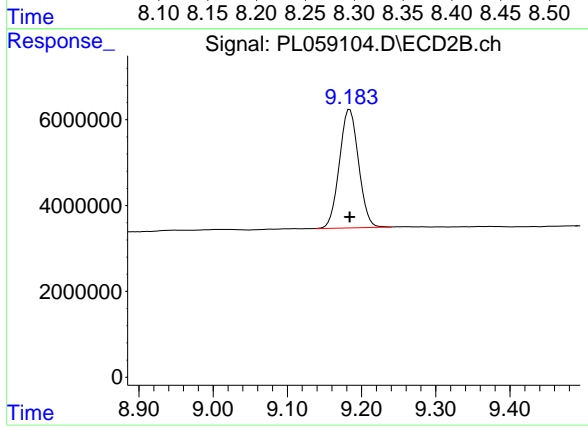
#22 Mirex

R.T.: 8.285 min  
 Delta R.T.: 0.000 min  
 Response: 98072000  
 Conc: 49.71 ng/ml



#28 Decachlorobiphenyl  
R.T.: 8.297 min  
Delta R.T.: 0.000 min  
Response: 34256468  
Conc: 20.83 ng/ml

Instrument :  
ECD\_L  
ClientSampleId :  
PB129279BS



#28 Decachlorobiphenyl  
R.T.: 9.184 min  
Delta R.T.: 0.000 min  
Response: 49558085  
Conc: 20.91 ng/ml