

Data Path : Z:\pestpcbsrv\HPCHEM1\ECD\_L\Data\PL060325\  
 Data File : PL095882.D  
 Signal(s) : Signal #1: ECD1A.ch Signal #2: ECD2B.ch  
 Acq On : 03 Jun 2025 13:03  
 Operator : AR\AJ  
 Sample : PB168253BS  
 Misc :  
 ALS Vial : 6 Sample Multiplier: 1

Instrument :  
 ECD\_L  
 ClientSampleId :  
 PB168253BS

Integration File signal 1: autoint1.e  
 Integration File signal 2: autoint2.e  
 Quant Time: Jun 04 01:35:26 2025  
 Quant Method : Z:\pestpcbsrv\HPCHEM1\ECD\_L\methods\PL052125.M  
 Quant Title : GC Extractables  
 QLast Update : Thu May 22 06:29:30 2025  
 Response via : Initial Calibration  
 Integrator: ChemStation

Volume Inj. : 1 µl  
 Signal #1 Phase : ZB-MR2 Signal #2 Phase: ZB-MR2  
 Signal #1 Info : 30M x 0.32mm x0.5 Signal #2 Info : 30M x 0.32mm x0.25µm

Compound	RT#1	RT#2	Resp#1	Resp#2	ng/ml	ng/ml
System Monitoring Compounds						
1) SA Tetrachlo...	3.572	2.884	63766539	75258967	20.210	19.228
28) SA Decachlor...	9.099	8.059	46966644	85473932	19.932	19.539
Target Compounds						
2) A alpha-BHC	4.024	3.394	244.9E6	298.2E6	50.509	50.912
3) MA gamma-BHC...	4.355	3.727	225.3E6	283.7E6	50.391	50.645
4) MA Heptachlor	4.953	4.080	186.0E6	278.9E6	49.146	49.728
5) MB Aldrin	5.296	4.365	218.7E6	271.6E6	51.124	51.170
6) B beta-BHC	4.543	4.023	97203413	121.9E6	49.308	49.193
7) B delta-BHC	4.791	4.258	220.4E6	284.3E6	49.701	50.339
8) B Heptachlo...	5.716	4.866	193.8E6	250.3E6	50.769	50.691
9) A Endosulfan I	6.100	5.239	184.4E6	240.7E6	50.304	50.521
10) B gamma-Chl...	5.970	5.119	197.0E6	266.6E6	50.625	50.757
11) B alpha-Chl...	6.052	5.183	198.2E6	261.3E6	50.204	50.225
12) B 4,4'-DDE	6.222	5.369	182.9E6	262.6E6	49.856	48.969
13) MA Dieldrin	6.373	5.503	196.6E6	263.7E6	50.935	49.759
14) MA Endrin	6.600	5.778	150.9E6	228.6E6	46.771	46.885
15) B Endosulfa...	6.813	6.069	162.5E6	235.4E6	47.148	49.533
16) A 4,4'-DDD	6.732	5.922	147.2E6	224.9E6	50.218	51.292
17) MA 4,4'-DDT	7.047	6.175	126.6E6	216.4E6	46.801	45.238
18) B Endrin al...	6.942	6.247	120.5E6	172.1E6	49.862	49.832
19) B Endosulfa...	7.176	6.470	146.7E6	222.1E6	49.114	49.414
20) A Methoxychlor	7.520	6.745	59738247	113.3E6	46.842	43.306
21) B Endrin ke...	7.657	6.975	160.1E6	262.6E6	50.542	50.747
22) Mirex	8.138	7.169	114.6E6	199.1E6	49.513	49.033
24) Chlordane-2	5.296f	0.000	218.7E6	0	1138.019	N.D. #
25) Chlordane-3	5.970	5.119	197.0E6	266.6E6	266.618	404.630 #
26) Chlordane-4	6.052	5.183	198.2E6	261.3E6	220.536	457.711 #
27) Chlordane-5	0.000	6.069	0	235.4E6	N.D.	923.265 #

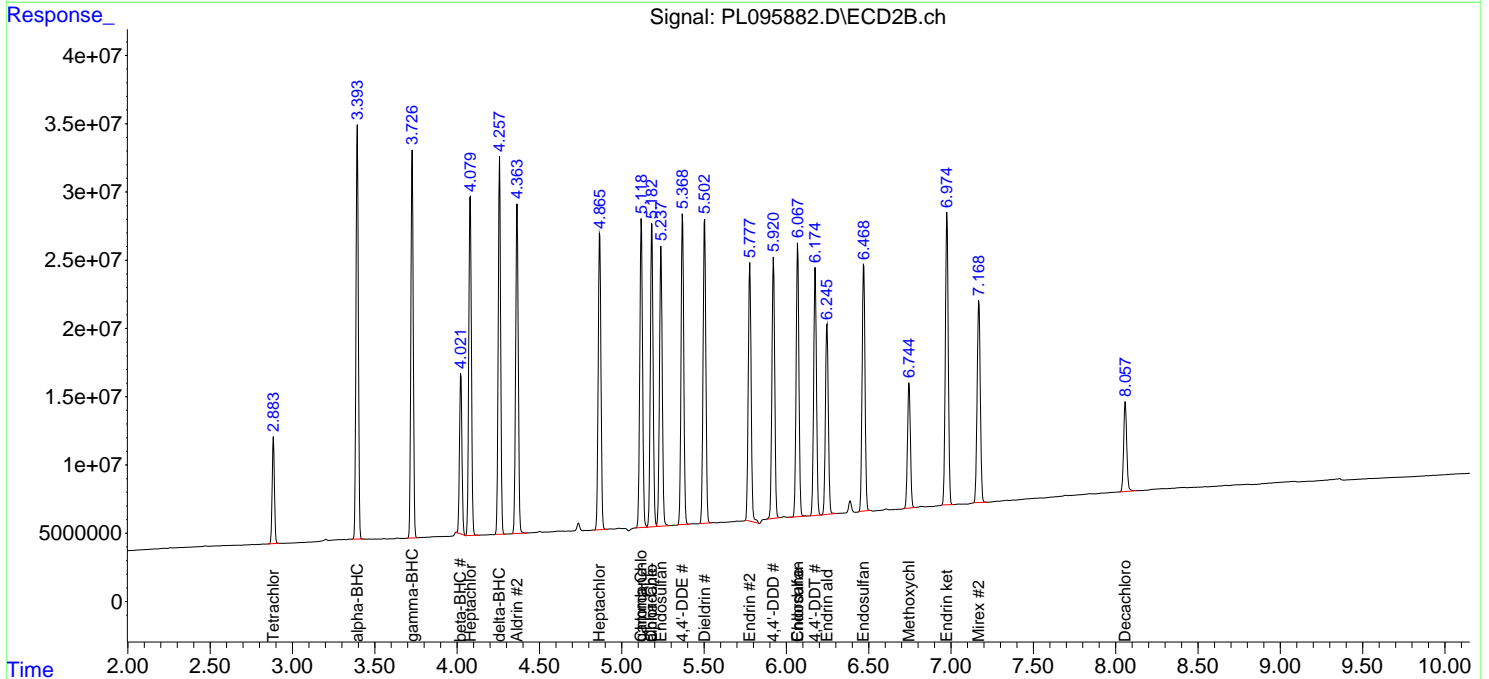
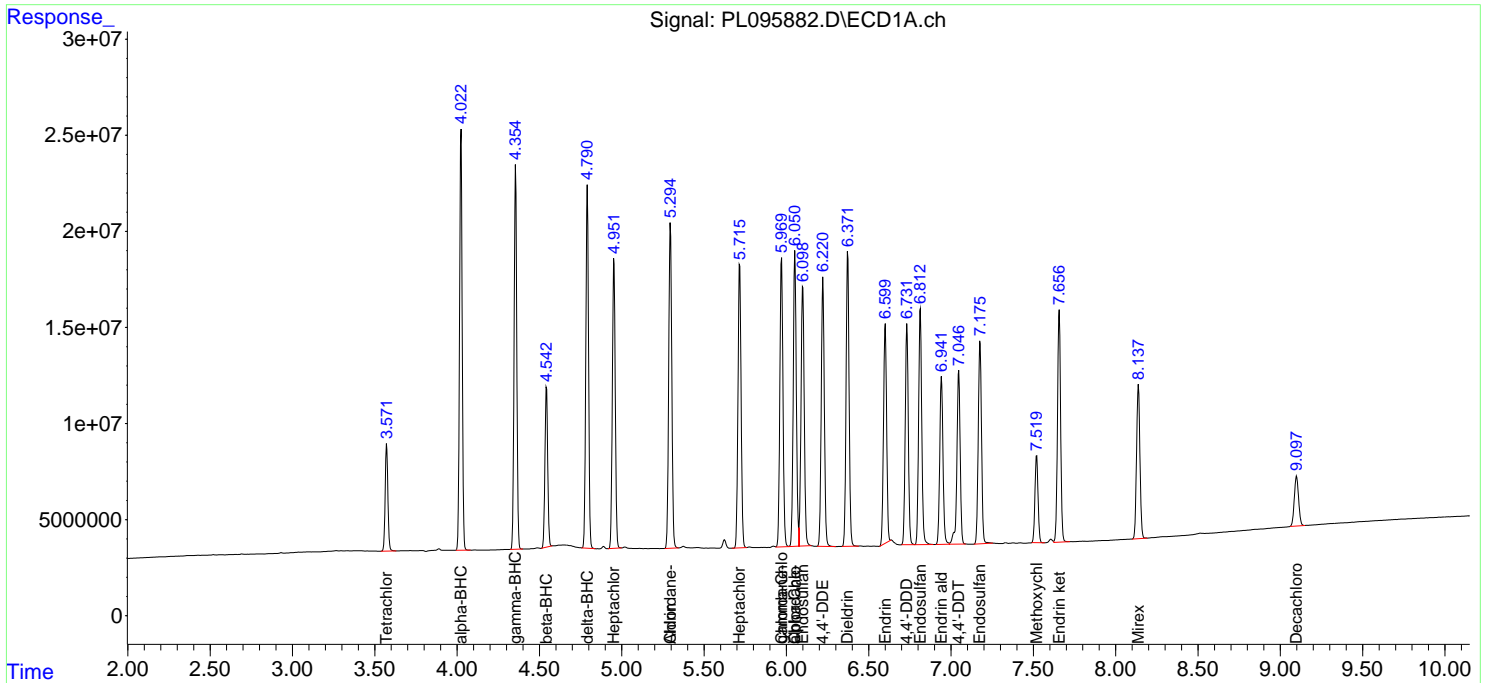
(f)=RT Delta > 1/2 Window (#)=Amounts differ by > 25% (m)=manual int.

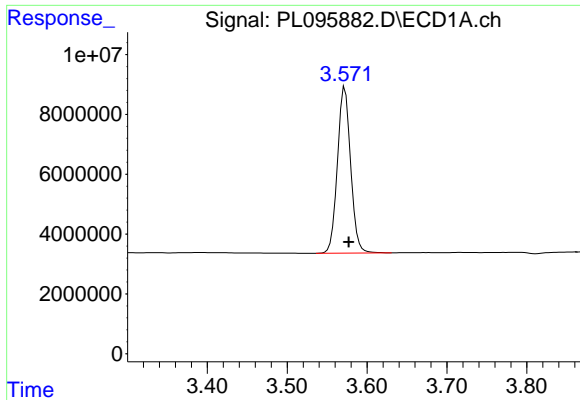
Data Path : Z:\pestpcbsrv\HPCHEM1\ECD\_L\Data\PL060325\  
 Data File : PL095882.D  
 Signal(s) : Signal #1: ECD1A.ch Signal #2: ECD2B.ch  
 Acq On : 03 Jun 2025 13:03  
 Operator : AR\AJ  
 Sample : PB168253BS  
 Misc :  
 ALS Vial : 6 Sample Multiplier: 1

Instrument :  
 ECD\_L  
 ClientSampleId :  
 PB168253BS

Integration File signal 1: autoint1.e  
 Integration File signal 2: autoint2.e  
 Quant Time: Jun 04 01:35:26 2025  
 Quant Method : Z:\pestpcbsrv\HPCHEM1\ECD\_L\methods\PL052125.M  
 Quant Title : GC Extractables  
 QLast Update : Thu May 22 06:29:30 2025  
 Response via : Initial Calibration  
 Integrator: ChemStation

Volume Inj. : 1 µl  
 Signal #1 Phase : ZB-MR1 Signal #2 Phase: ZB-MR2  
 Signal #1 Info : 30M x 0.32mm x0.5 Signal #2 Info : 30M x 0.32mm x0.25µm

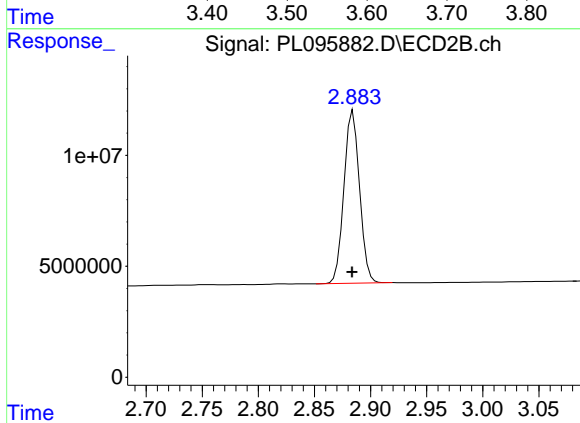




#1 Tetrachloro-m-xylene

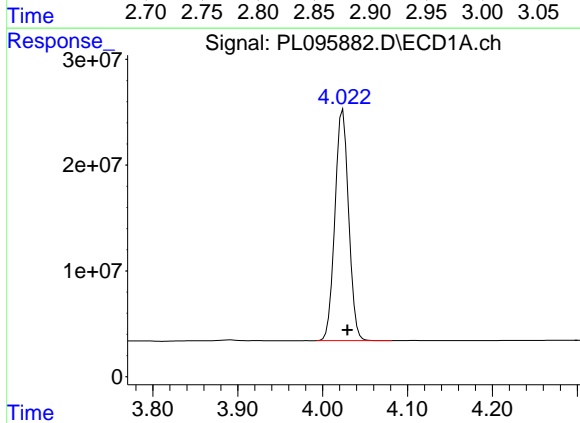
R.T.: 3.572 min  
 Delta R.T.: -0.005 min  
 Response: 63766539  
 Conc: 20.21 ng/ml

Instrument :  
 ECD\_L  
 ClientSampleId :  
 PB168253BS



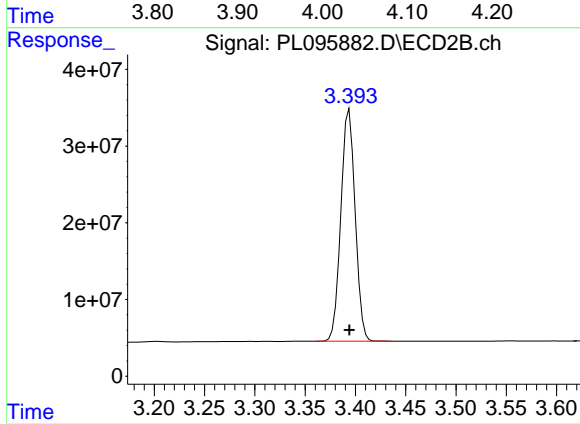
#1 Tetrachloro-m-xylene

R.T.: 2.884 min  
 Delta R.T.: 0.001 min  
 Response: 75258967  
 Conc: 19.23 ng/ml



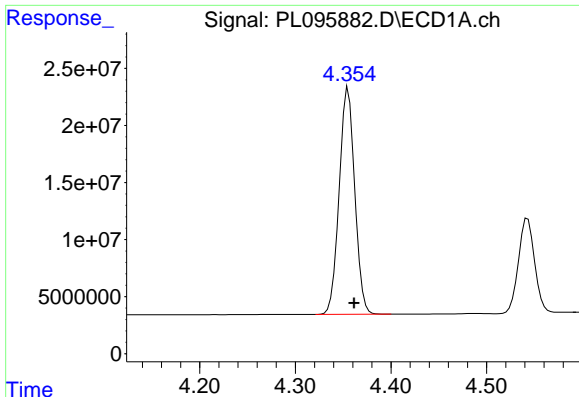
#2 alpha-BHC

R.T.: 4.024 min  
 Delta R.T.: -0.005 min  
 Response: 244865587  
 Conc: 50.51 ng/ml



#2 alpha-BHC

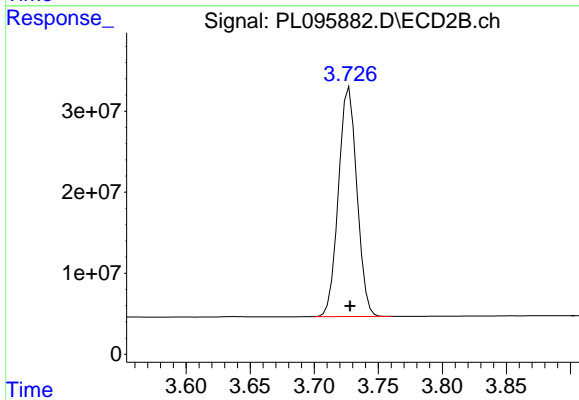
R.T.: 3.394 min  
 Delta R.T.: 0.000 min  
 Response: 298206703  
 Conc: 50.91 ng/ml



#3 gamma-BHC (Lindane)

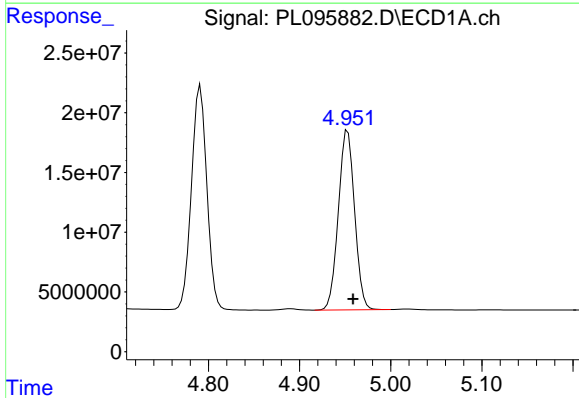
R.T.: 4.355 min  
 Delta R.T.: -0.006 min  
 Response: 225343213  
 Conc: 50.39 ng/ml

Instrument :  
 ECD\_L  
 ClientSampleId :  
 PB168253BS



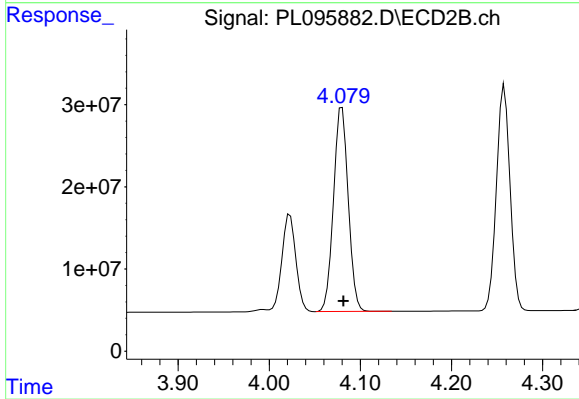
#3 gamma-BHC (Lindane)

R.T.: 3.727 min  
 Delta R.T.: 0.000 min  
 Response: 283675489  
 Conc: 50.65 ng/ml



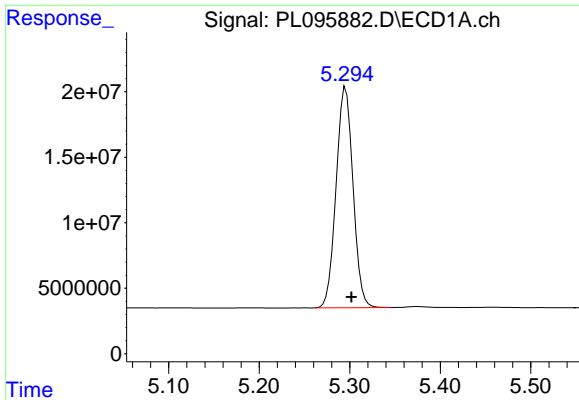
#4 Heptachlor

R.T.: 4.953 min  
 Delta R.T.: -0.006 min  
 Response: 186020369  
 Conc: 49.15 ng/ml



#4 Heptachlor

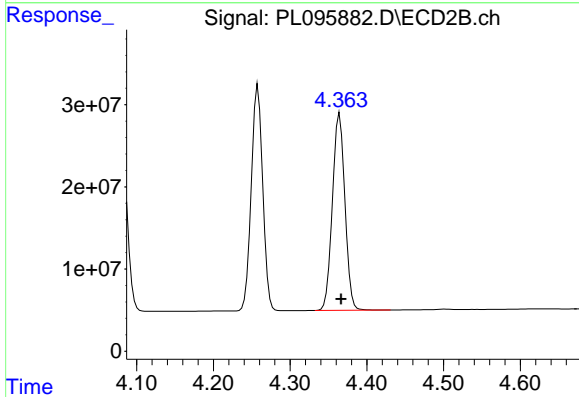
R.T.: 4.080 min  
 Delta R.T.: -0.001 min  
 Response: 278926056  
 Conc: 49.73 ng/ml



#5 Aldrin

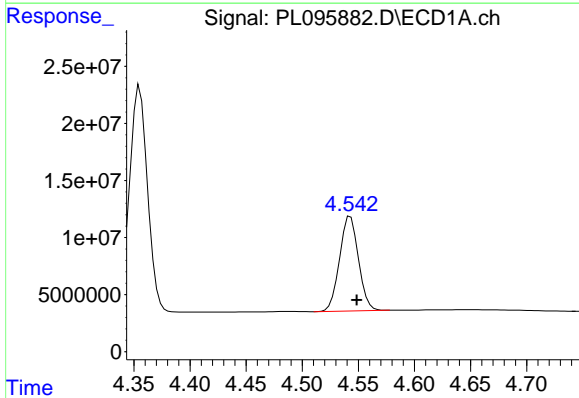
R.T.: 5.296 min  
 Delta R.T.: -0.006 min  
 Response: 218695797  
 Conc: 51.12 ng/ml

Instrument :  
 ECD\_L  
 ClientSampleId :  
 PB168253BS



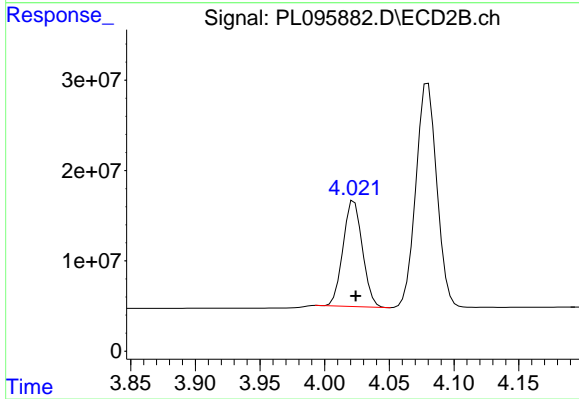
#5 Aldrin

R.T.: 4.365 min  
 Delta R.T.: -0.002 min  
 Response: 271562101  
 Conc: 51.17 ng/ml



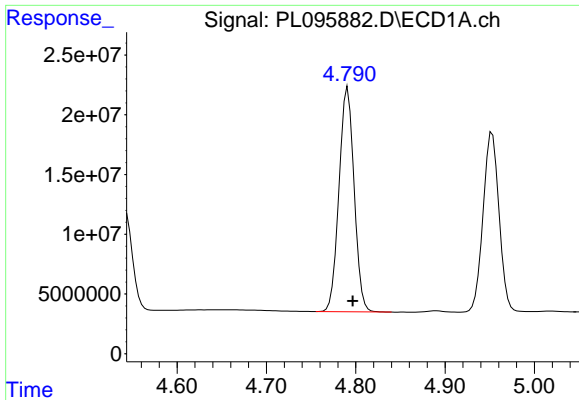
#6 beta-BHC

R.T.: 4.543 min  
 Delta R.T.: -0.006 min  
 Response: 97203413  
 Conc: 49.31 ng/ml



#6 beta-BHC

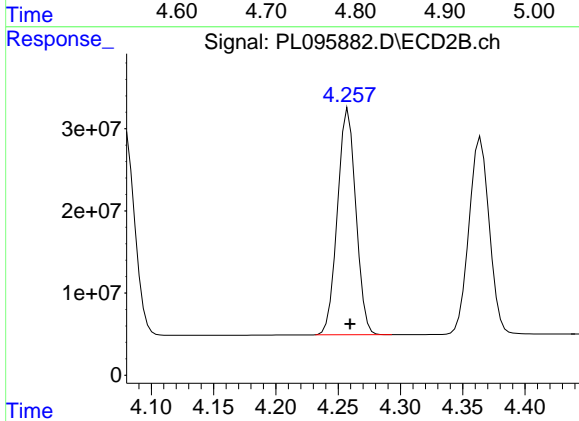
R.T.: 4.023 min  
 Delta R.T.: -0.001 min  
 Response: 121878412  
 Conc: 49.19 ng/ml



#7 delta-BHC

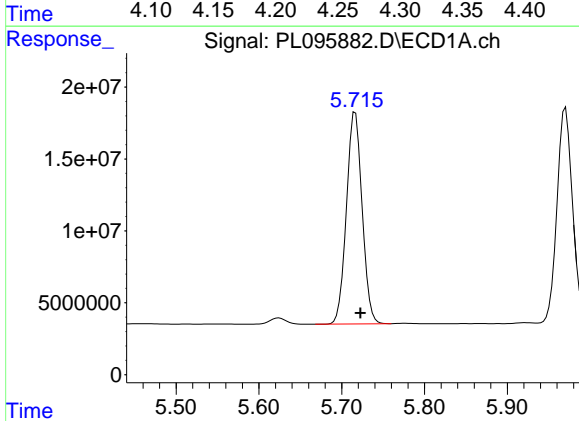
R.T.: 4.791 min  
 Delta R.T.: -0.005 min  
 Response: 220353793  
 Conc: 49.70 ng/ml

Instrument :  
 ECD\_L  
 ClientSampleId :  
 PB168253BS



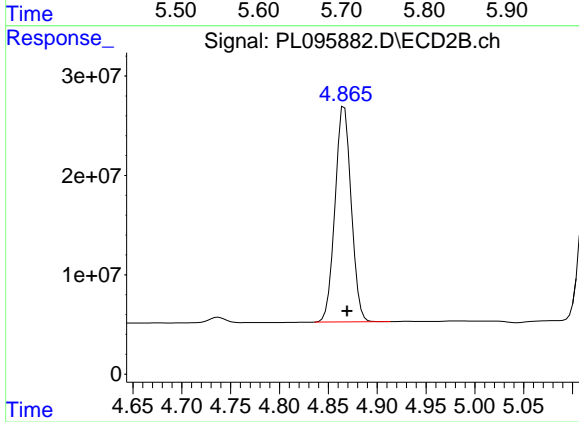
#7 delta-BHC

R.T.: 4.258 min  
 Delta R.T.: -0.001 min  
 Response: 284285164  
 Conc: 50.34 ng/ml



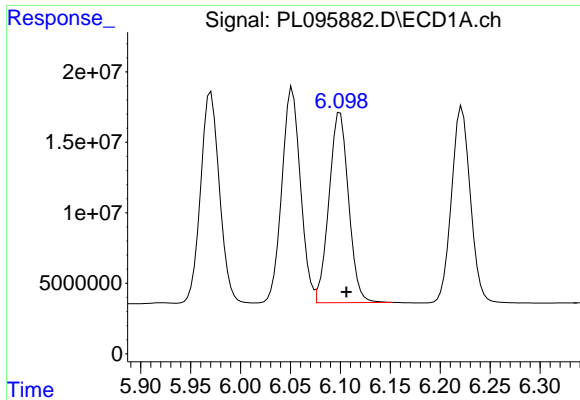
#8 Heptachlor epoxide

R.T.: 5.716 min  
 Delta R.T.: -0.006 min  
 Response: 193777786  
 Conc: 50.77 ng/ml



#8 Heptachlor epoxide

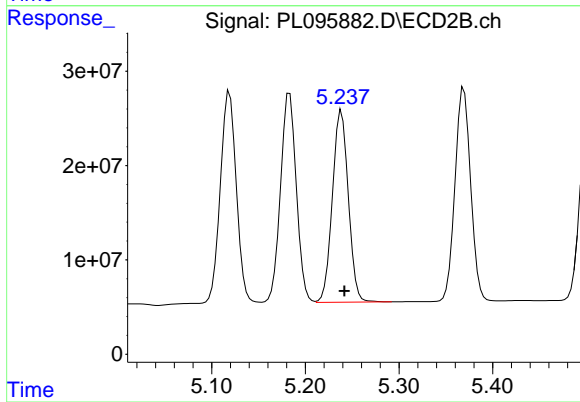
R.T.: 4.866 min  
 Delta R.T.: -0.003 min  
 Response: 250283652  
 Conc: 50.69 ng/ml



#9 Endosulfan I

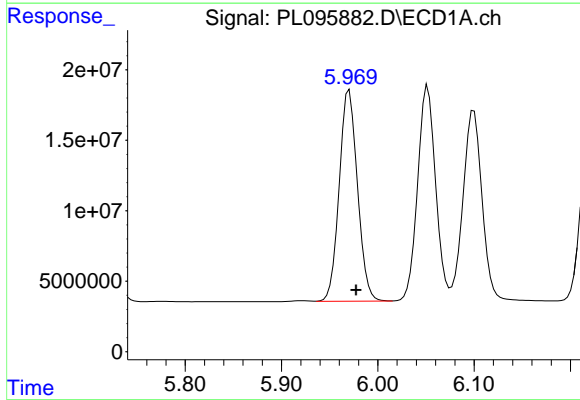
R.T.: 6.100 min  
 Delta R.T.: -0.006 min  
 Response: 184355738  
 Conc: 50.30 ng/ml

Instrument :  
 ECD\_L  
 ClientSampleId :  
 PB168253BS



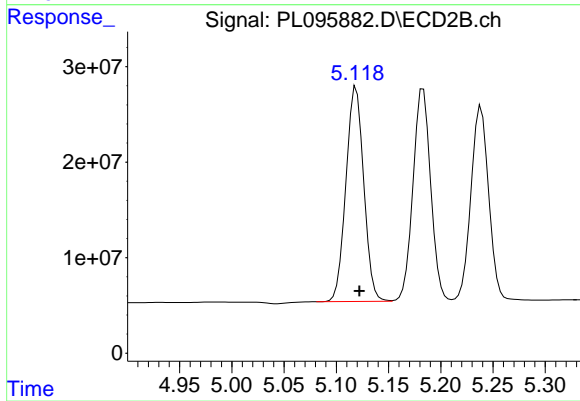
#9 Endosulfan I

R.T.: 5.239 min  
 Delta R.T.: -0.003 min  
 Response: 240729297  
 Conc: 50.52 ng/ml



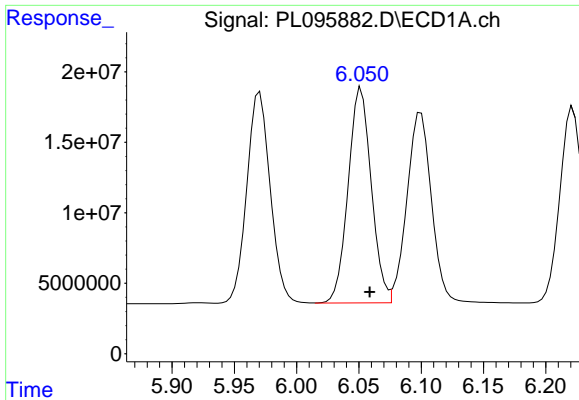
#10 gamma-Chlordane

R.T.: 5.970 min  
 Delta R.T.: -0.007 min  
 Response: 197038095  
 Conc: 50.63 ng/ml



#10 gamma-Chlordane

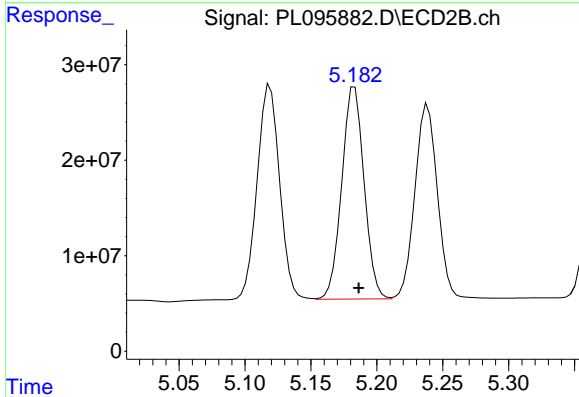
R.T.: 5.119 min  
 Delta R.T.: -0.003 min  
 Response: 266612006  
 Conc: 50.76 ng/ml



#11 alpha-Chlordane

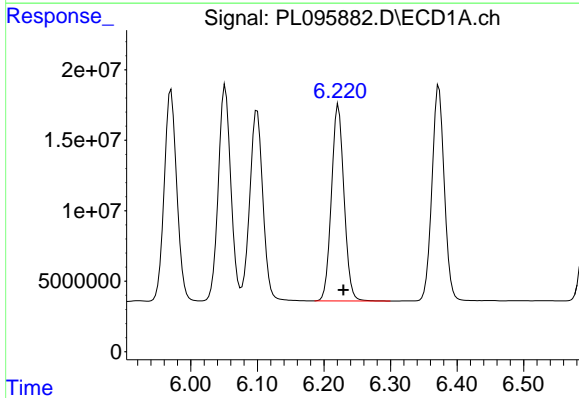
R.T.: 6.052 min  
 Delta R.T.: -0.007 min  
 Response: 198215854  
 Conc: 50.20 ng/ml

Instrument :  
 ECD\_L  
 ClientSampleId :  
 PB168253BS



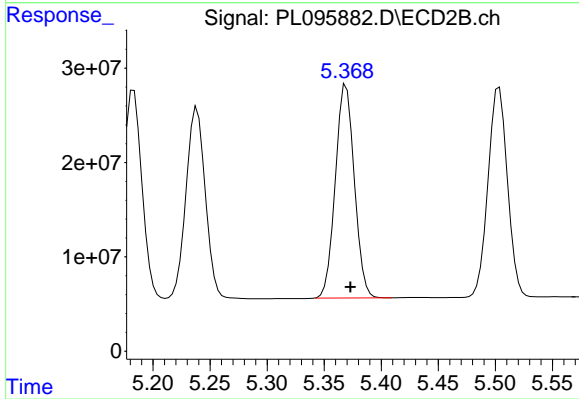
#11 alpha-Chlordane

R.T.: 5.183 min  
 Delta R.T.: -0.003 min  
 Response: 261311045  
 Conc: 50.23 ng/ml



#12 4,4'-DDE

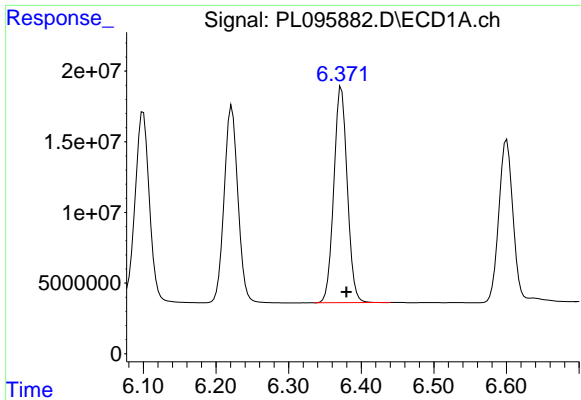
R.T.: 6.222 min  
 Delta R.T.: -0.007 min  
 Response: 182867000  
 Conc: 49.86 ng/ml



#12 4,4'-DDE

R.T.: 5.369 min  
 Delta R.T.: -0.004 min  
 Response: 262580223  
 Conc: 48.97 ng/ml

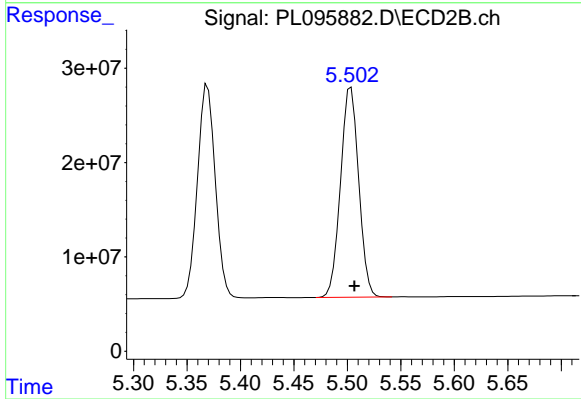




#13 Dieldrin

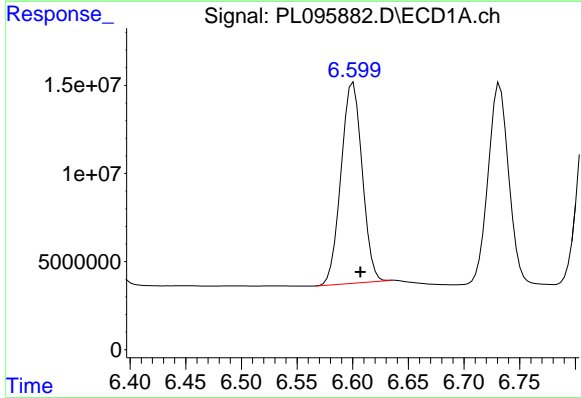
R.T.: 6.373 min  
 Delta R.T.: -0.007 min  
 Response: 196569350  
 Conc: 50.94 ng/ml

Instrument :  
 ECD\_L  
 ClientSampleId :  
 PB168253BS



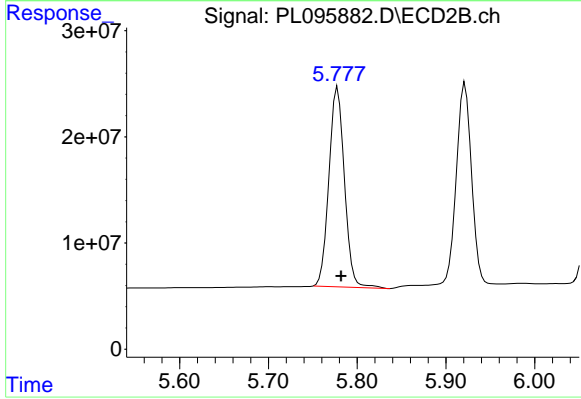
#13 Dieldrin

R.T.: 5.503 min  
 Delta R.T.: -0.003 min  
 Response: 263729099  
 Conc: 49.76 ng/ml



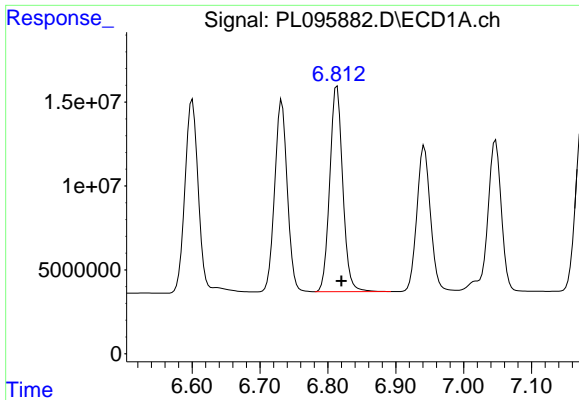
#14 Endrin

R.T.: 6.600 min  
 Delta R.T.: -0.007 min  
 Response: 150917306  
 Conc: 46.77 ng/ml



#14 Endrin

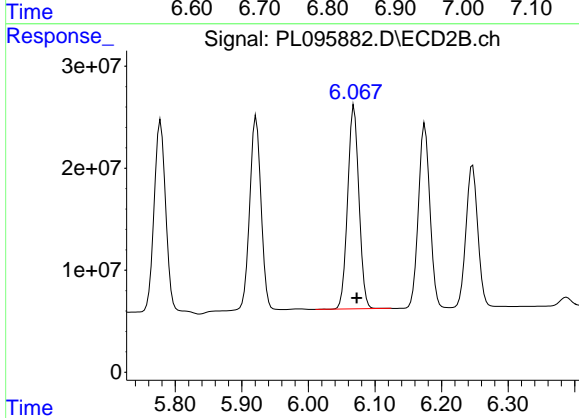
R.T.: 5.778 min  
 Delta R.T.: -0.004 min  
 Response: 228615762  
 Conc: 46.88 ng/ml



#15 Endosulfan II

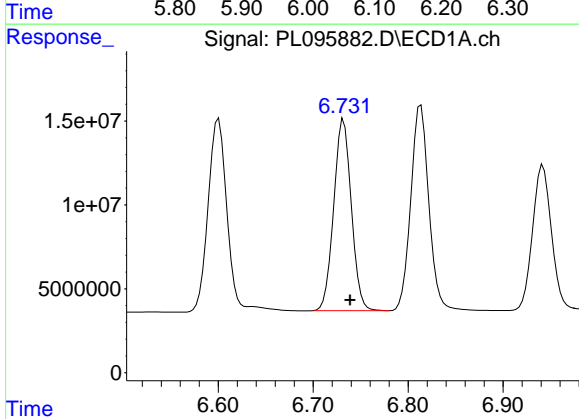
R.T.: 6.813 min  
Delta R.T.: -0.006 min  
Response: 162474856  
Conc: 47.15 ng/ml

Instrument :  
ECD\_L  
ClientSampleId :  
PB168253BS



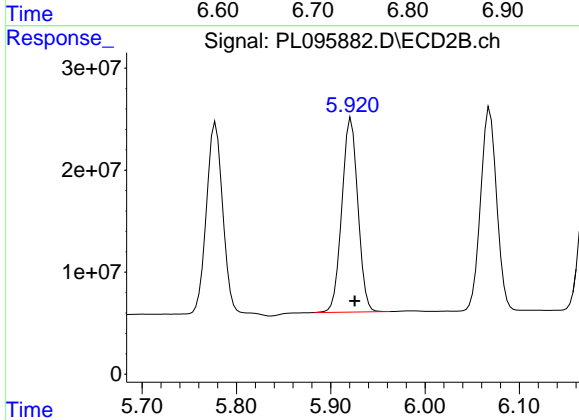
#15 Endosulfan II

R.T.: 6.069 min  
Delta R.T.: -0.004 min  
Response: 235371449  
Conc: 49.53 ng/ml



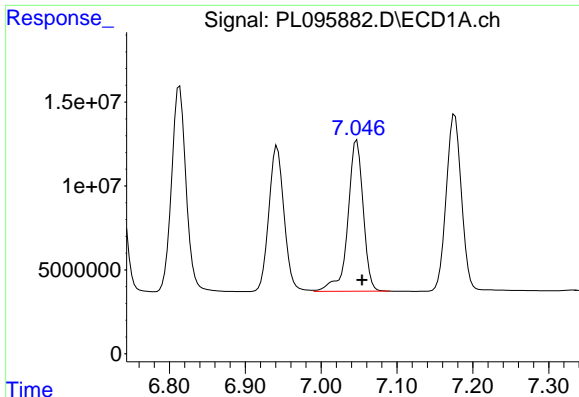
#16 4,4'-DDD

R.T.: 6.732 min  
Delta R.T.: -0.007 min  
Response: 147168385  
Conc: 50.22 ng/ml



#16 4,4'-DDD

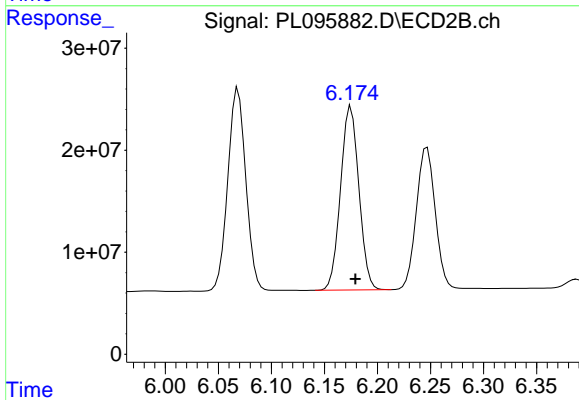
R.T.: 5.922 min  
Delta R.T.: -0.004 min  
Response: 224912875  
Conc: 51.29 ng/ml



#17 4,4'-DDT

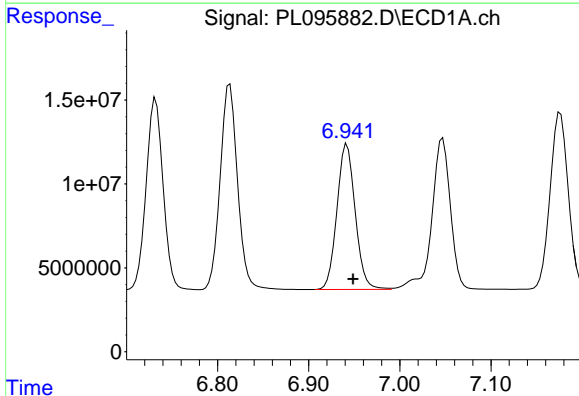
R.T.: 7.047 min  
 Delta R.T.: -0.007 min  
 Response: 126602482  
 Conc: 46.80 ng/ml

Instrument :  
 ECD\_L  
 ClientSampleId :  
 PB168253BS



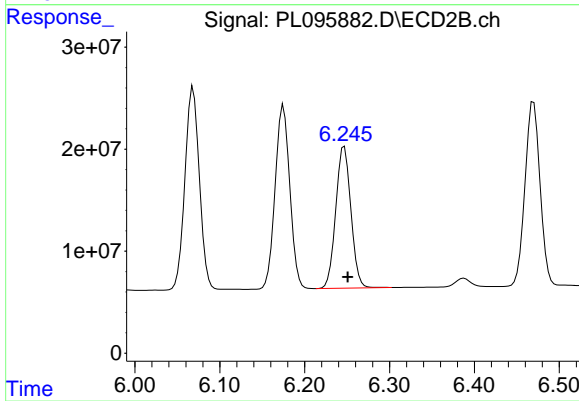
#17 4,4'-DDT

R.T.: 6.175 min  
 Delta R.T.: -0.004 min  
 Response: 216356099  
 Conc: 45.24 ng/ml



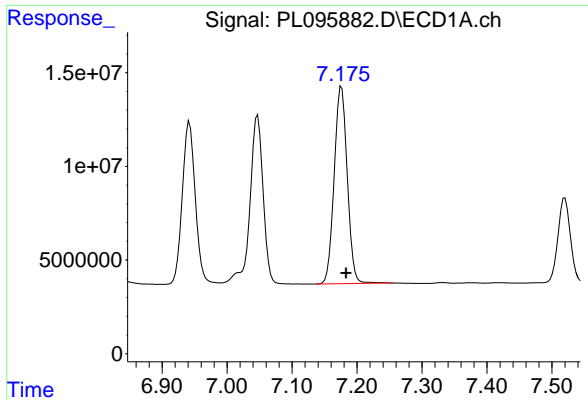
#18 Endrin aldehyde

R.T.: 6.942 min  
 Delta R.T.: -0.007 min  
 Response: 120546285  
 Conc: 49.86 ng/ml



#18 Endrin aldehyde

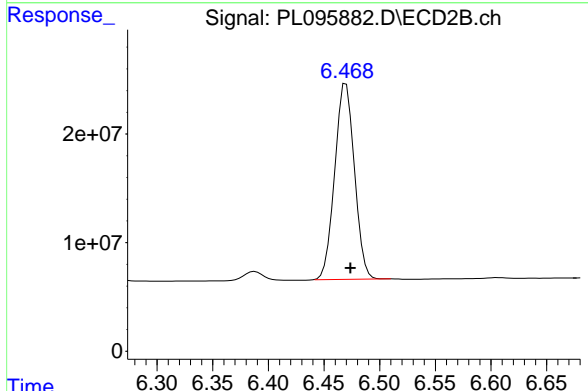
R.T.: 6.247 min  
 Delta R.T.: -0.004 min  
 Response: 172134541  
 Conc: 49.83 ng/ml



#19 Endosulfan Sulfate

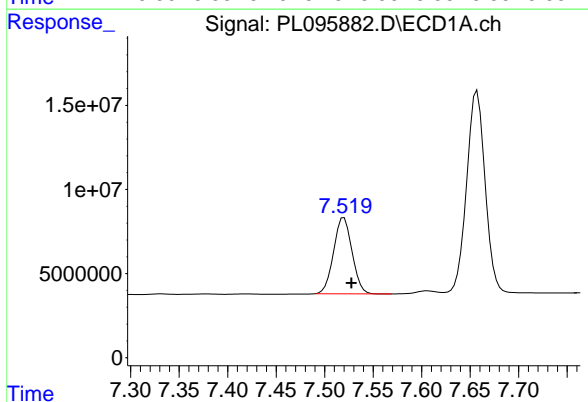
R.T.: 7.176 min  
Delta R.T.: -0.007 min  
Response: 146699649  
Conc: 49.11 ng/ml

Instrument :  
ECD\_L  
ClientSampleId :  
PB168253BS



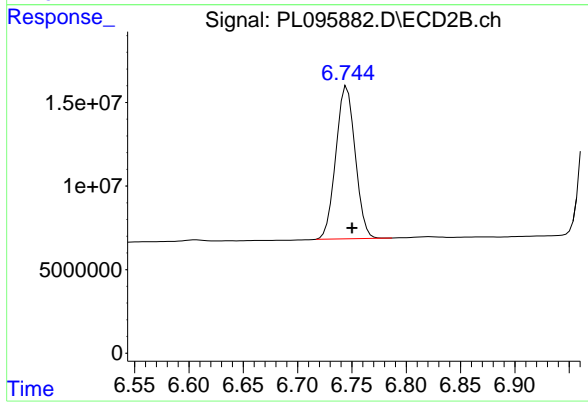
#19 Endosulfan Sulfate

R.T.: 6.470 min  
Delta R.T.: -0.004 min  
Response: 222105279  
Conc: 49.41 ng/ml



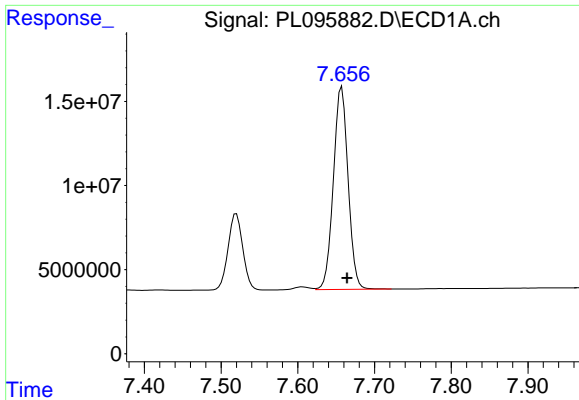
#20 Methoxychlor

R.T.: 7.520 min  
Delta R.T.: -0.008 min  
Response: 59738247  
Conc: 46.84 ng/ml



#20 Methoxychlor

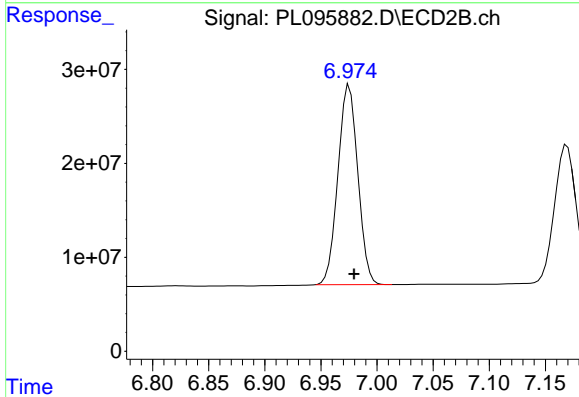
R.T.: 6.745 min  
Delta R.T.: -0.005 min  
Response: 113292099  
Conc: 43.31 ng/ml



#21 Endrin ketone

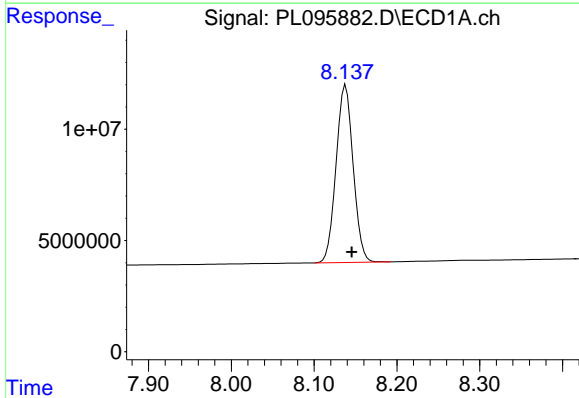
R.T.: 7.657 min  
 Delta R.T.: -0.007 min  
 Response: 160063292  
 Conc: 50.54 ng/ml

Instrument :  
 ECD\_L  
 ClientSampleId :  
 PB168253BS



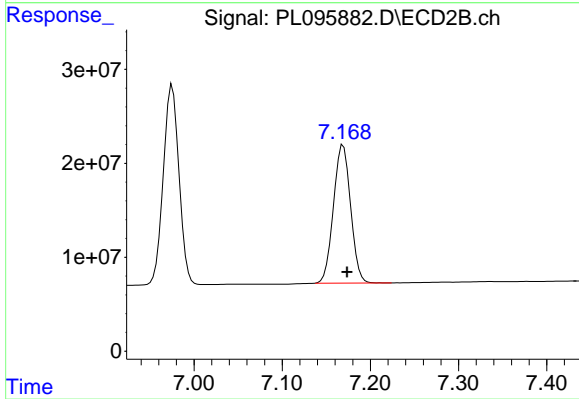
#21 Endrin ketone

R.T.: 6.975 min  
 Delta R.T.: -0.004 min  
 Response: 262560824  
 Conc: 50.75 ng/ml



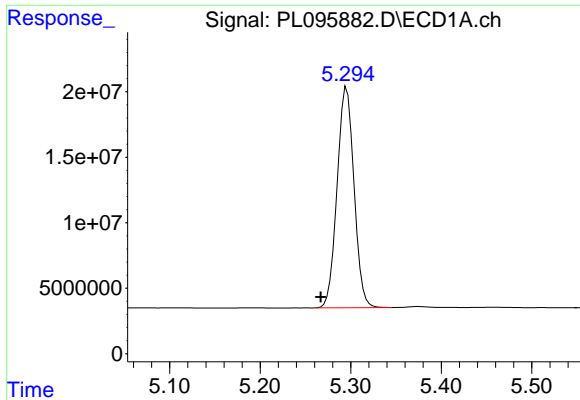
#22 Mirex

R.T.: 8.138 min  
 Delta R.T.: -0.007 min  
 Response: 114561376  
 Conc: 49.51 ng/ml



#22 Mirex

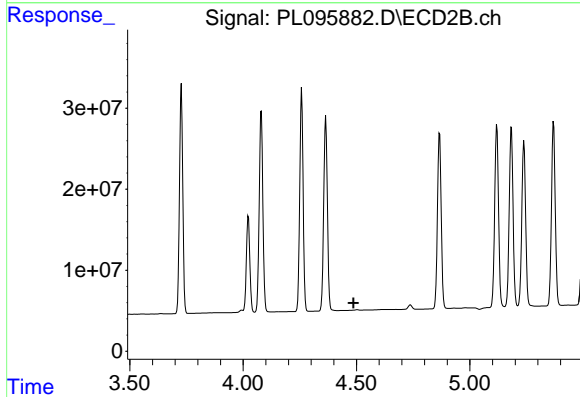
R.T.: 7.169 min  
 Delta R.T.: -0.004 min  
 Response: 199099372  
 Conc: 49.03 ng/ml



#24 Chlordane-2

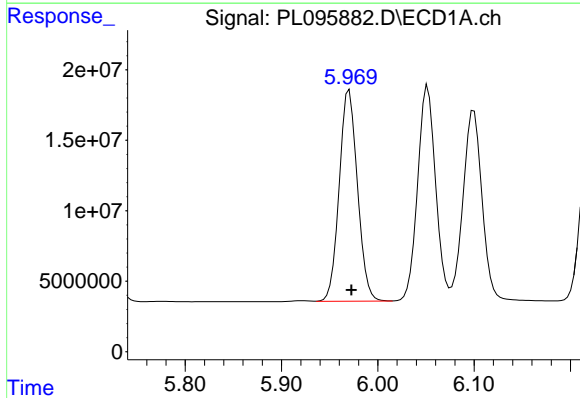
R.T.: 5.296 min  
 Delta R.T.: 0.029 min  
 Response: 218695797  
 Conc: 1138.02 ng/m

Instrument :  
 ECD\_L  
 ClientSampleId :  
 PB168253BS



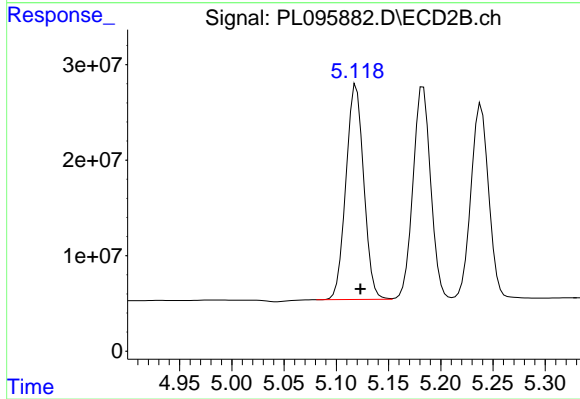
#24 Chlordane-2

R.T.: 0.000 min  
 Exp R.T. : 4.487 min  
 Response: 0  
 Conc: N.D.



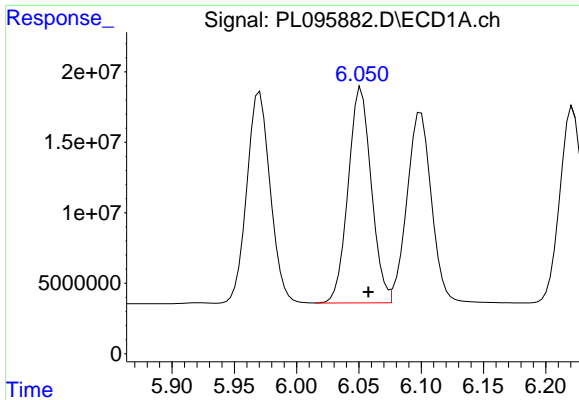
#25 Chlordane-3

R.T.: 5.970 min  
 Delta R.T.: -0.002 min  
 Response: 197038095  
 Conc: 266.62 ng/ml



#25 Chlordane-3

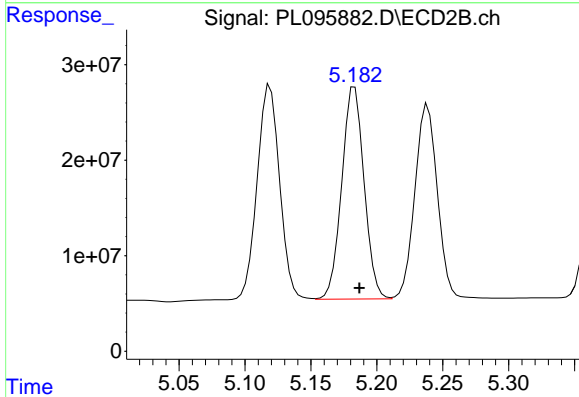
R.T.: 5.119 min  
 Delta R.T.: -0.004 min  
 Response: 266612006  
 Conc: 404.63 ng/ml



#26 Chlordane-4

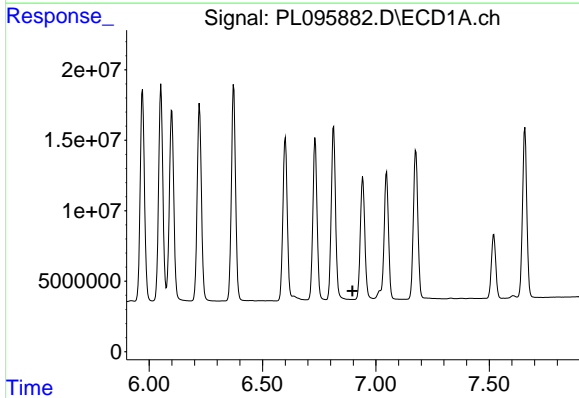
R.T.: 6.052 min  
 Delta R.T.: -0.006 min  
 Response: 198215854  
 Conc: 220.54 ng/ml

Instrument :  
 ECD\_L  
 ClientSampleId :  
 PB168253BS



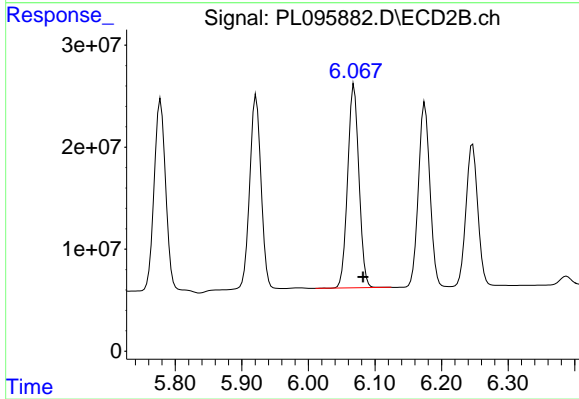
#26 Chlordane-4

R.T.: 5.183 min  
 Delta R.T.: -0.004 min  
 Response: 261311045  
 Conc: 457.71 ng/ml



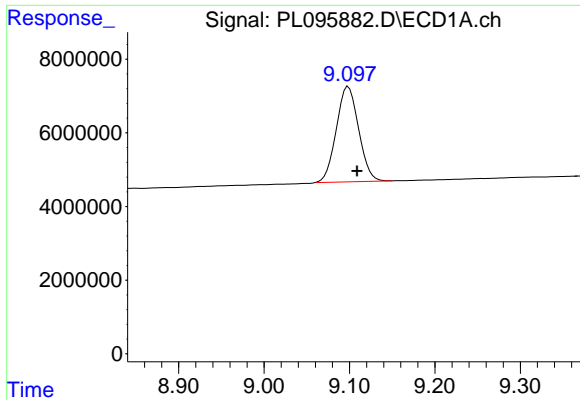
#27 Chlordane-5

R.T.: 0.000 min  
 Exp R.T. : 6.897 min  
 Response: 0  
 Conc: N.D.



#27 Chlordane-5

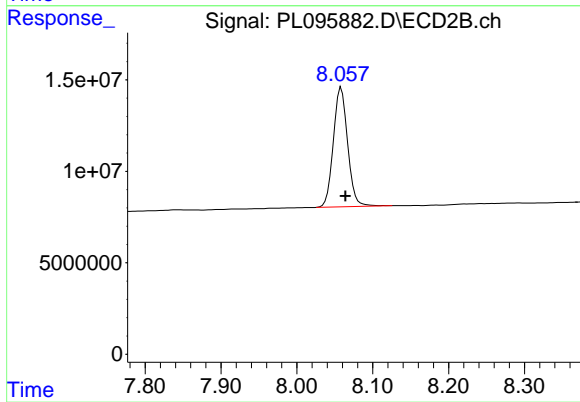
R.T.: 6.069 min  
 Delta R.T.: -0.014 min  
 Response: 235371449  
 Conc: 923.27 ng/ml



#28 Decachlorobiphenyl

R.T.: 9.099 min  
Delta R.T.: -0.010 min  
Response: 46966644  
Conc: 19.93 ng/ml

Instrument :  
ECD\_L  
ClientSampleId :  
PB168253BS



#28 Decachlorobiphenyl

R.T.: 8.059 min  
Delta R.T.: -0.005 min  
Response: 85473932  
Conc: 19.54 ng/ml