

Data Path : Z:\pestpcbsrv\HPCHEM1\ECD\_L\Data\PL060419\  
 Data File : PL049278.D  
 Signal(s) : Signal #1: ECD1A.ch Signal #2: ECD2B.ch  
 Acq On : 04 Jun 2019 21:04  
 Operator : SM\AJ  
 Sample : K2641-19  
 Misc :  
 ALS Vial : 33 Sample Multiplier: 1

Instrument :  
 ECD\_L  
 ClientSampleId :  
 CL-02-053119-D

Integration File signal 1: autoint1.e  
 Integration File signal 2: autoint2.e  
 Quant Time: Jun 05 01:18:27 2019  
 Quant Method : Z:\pestpcbsrv\HPCHEM1\ECD\_L\methods\PL053019.M  
 Quant Title : GC Extractables  
 QLast Update : Fri May 31 01:35:35 2019  
 Response via : Initial Calibration  
 Integrator: ChemStation

Volume Inj. : 1 µl  
 Signal #1 Phase : ZB-MR2 Signal #2 Phase: ZB-MR1  
 Signal #1 Info : 30M x 0.32mm x0.2 Signal #2 Info : 30M x 0.32mm x0.5µm

Compound	RT#1	RT#2	Resp#1	Resp#2	ng/ml	ng/ml
-----						
System Monitoring Compounds						
1) SA Tetrachlo...	3.323	3.936	187.5E6	43083293	17.018	14.913
28) SA Decachlor...	7.990	8.971	134.2E6	41498308	10.551	12.426
Target Compounds						
2) A alpha-BHC	3.765	4.331	7978304	1999684	0.443	0.499
3) MA gamma-BHC...	4.048f	0.000	11585115	0	0.684	N.D. #
4) MA Heptachlor	4.311	5.110	100.1E6	27619534	5.652	6.873
5) MB Aldrin	4.564	5.390f	7873157	17565051	0.461	4.774 #
6) B beta-BHC	4.311f	4.799f	100.1E6	3079366	14.404	1.788 #
7) B delta-BHC	4.467	0.000	20296058	0	1.256	N.D. #
8) B Heptachlo...	4.987	5.789	-537693	40629227	N.D.	12.429
9) A Endosulfan I	5.304	0.000	23874092	0	1.631	N.D. #
10) B gamma-Chl...	5.210	6.034	656.5E6	197.8E6	41.125	57.183 #
11) B alpha-Chl...	5.265	6.107	708.5E6	301.9E6	45.351	87.018 #
12) B 4,4'-DDE	5.433	6.262	9287815	8846066	0.594	2.695 #
13) MA Dieldrin	5.556	6.409	33509414	4691152	2.192	1.399 #
14) MA Endrin	5.816	6.625	17508209	3938045	1.214	1.320
15) B Endosulfa...	6.088	6.851	207.1E6	713677	15.685	0.235 #
17) MA 4,4'-DDT	6.175	7.025f	25432716	2055801	2.066	0.733 #
18) B Endrin al...	6.275f	0.000	6879972	0	0.629	N.D. #
19) B Endosulfa...	0.000	7.184	0	2137722	N.D.	0.703 #

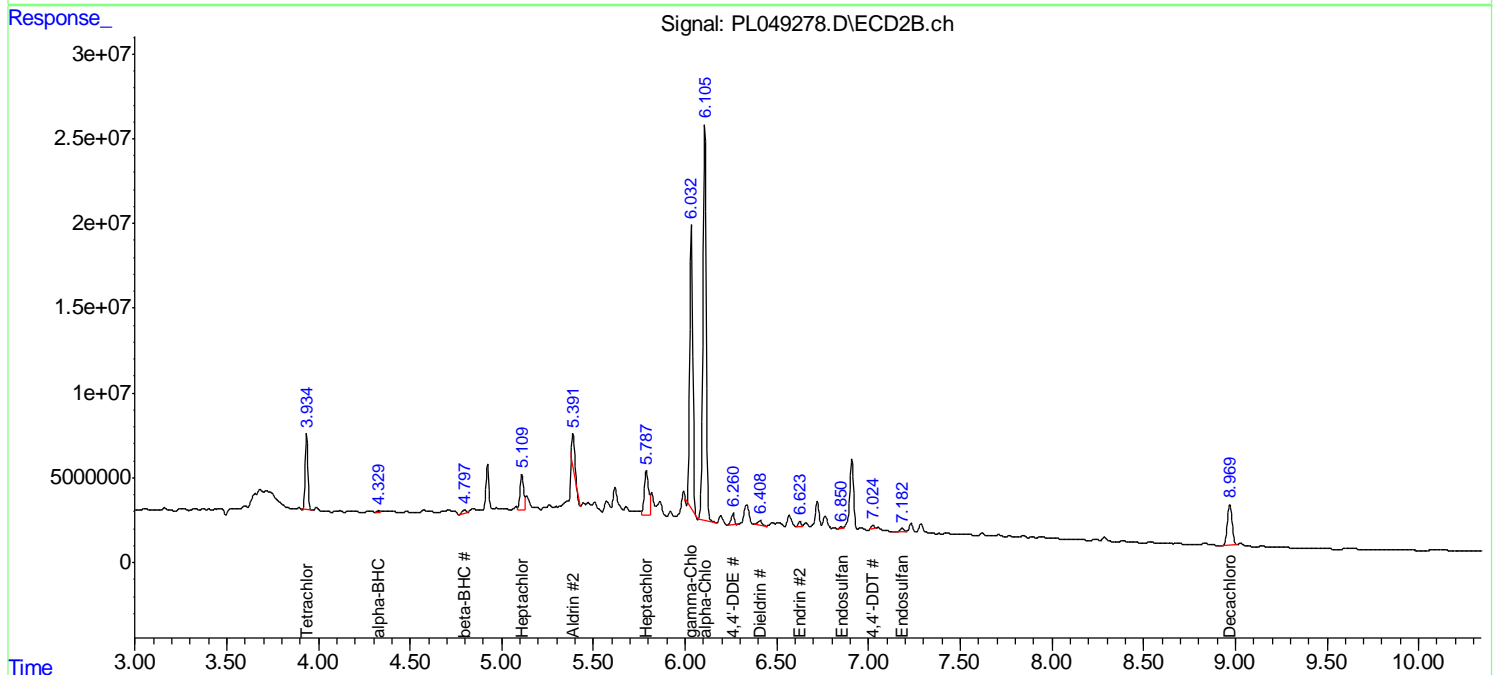
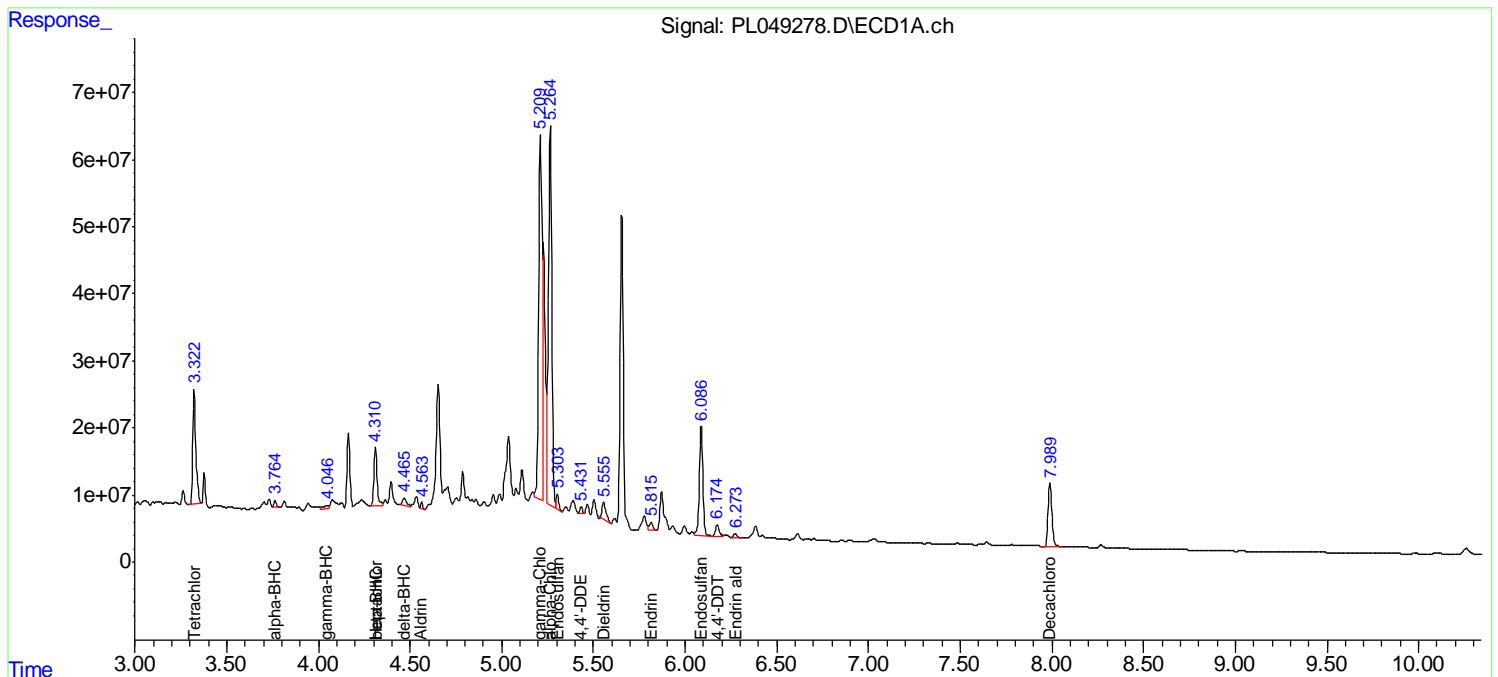
(f)=RT Delta > 1/2 Window (#)=Amounts differ by > 25% (m)=manual int.

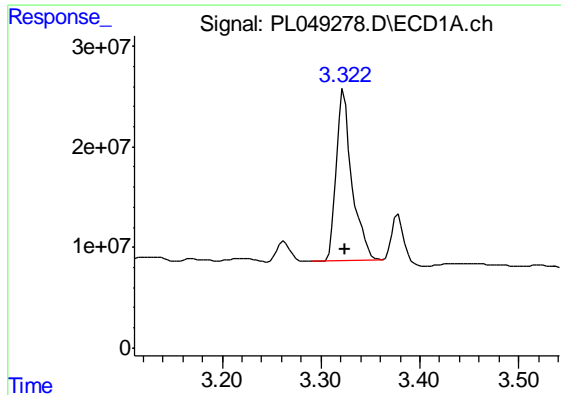
Data Path : Z:\pestpcbsrv\HPCHEM1\ECD\_L\Data\PL060419\  
 Data File : PL049278.D  
 Signal(s) : Signal #1: ECD1A.ch Signal #2: ECD2B.ch  
 Acq On : 04 Jun 2019 21:04  
 Operator : SM\AJ  
 Sample : K2641-19  
 Misc :  
 ALS Vial : 33 Sample Multiplier: 1

Instrument :  
 ECD\_L  
 ClientSampled :  
 CL-02-053119-D

Integration File signal 1: autoint1.e  
 Integration File signal 2: autoint2.e  
 Quant Time: Jun 05 01:18:27 2019  
 Quant Method : Z:\pestpcbsrv\HPCHEM1\ECD\_L\methods\PL053019.M  
 Quant Title : GC Extractables  
 QLast Update : Fri May 31 01:35:35 2019  
 Response via : Initial Calibration  
 Integrator: ChemStation

Volume Inj. : 1 µl  
 Signal #1 Phase : ZB-MR2 Signal #2 Phase: ZB-MR1  
 Signal #1 Info : 30M x 0.32mm x0.2 Signal #2 Info : 30M x 0.32mm x0.5µm

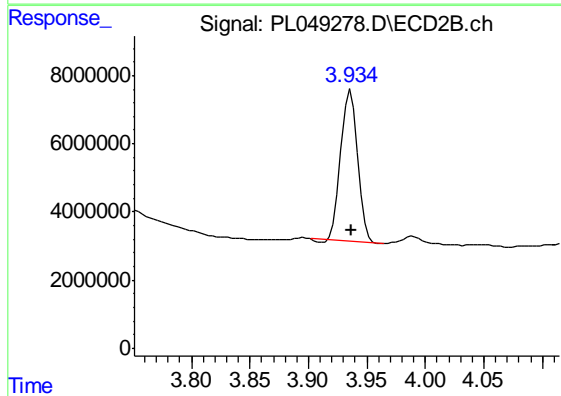




#1 Tetrachloro-m-xylene

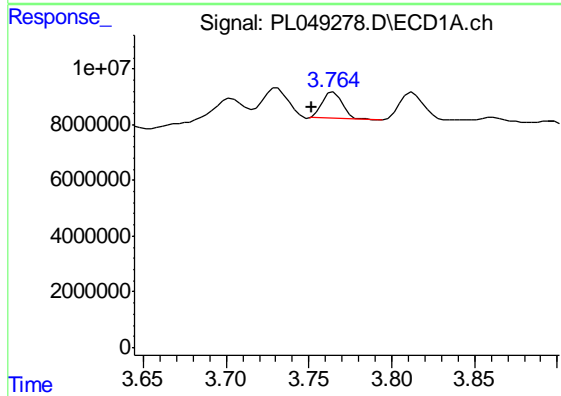
R.T.: 3.323 min  
 Delta R.T.: 0.000 min  
 Response: 187517123  
 Conc: 17.02 ng/ml

Instrument :  
 ECD\_L  
 ClientSampleId :  
 CL-02-053119-D



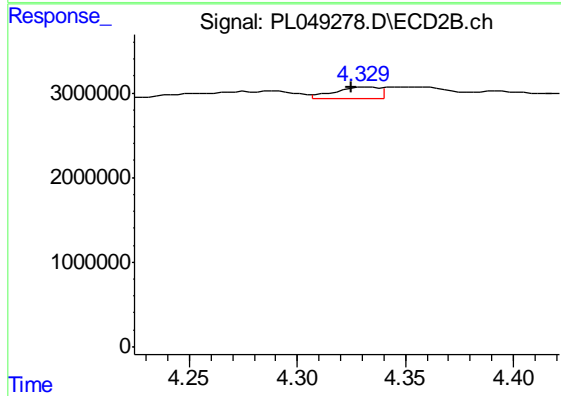
#1 Tetrachloro-m-xylene

R.T.: 3.936 min  
 Delta R.T.: 0.000 min  
 Response: 43083293  
 Conc: 14.91 ng/ml



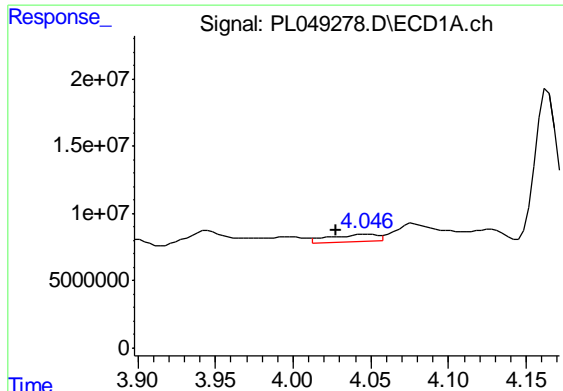
#2 alpha-BHC

R.T.: 3.765 min  
 Delta R.T.: 0.013 min  
 Response: 7978304  
 Conc: 0.44 ng/ml



#2 alpha-BHC

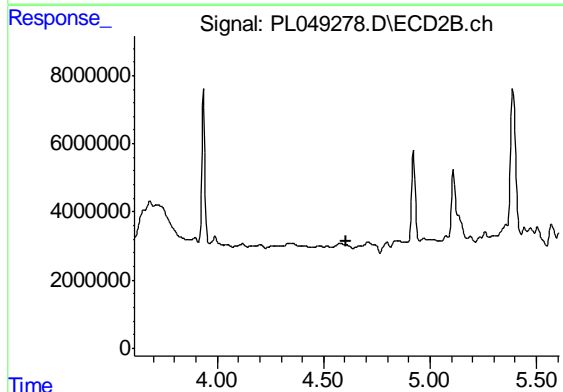
R.T.: 4.331 min  
 Delta R.T.: 0.006 min  
 Response: 1999684  
 Conc: 0.50 ng/ml



#3 gamma-BHC (Lindane)

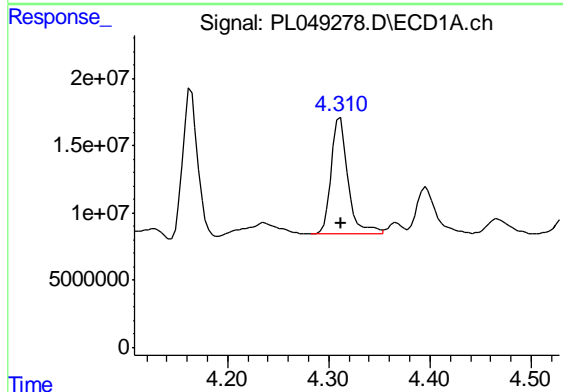
R.T.: 4.048 min  
 Delta R.T.: 0.020 min  
 Response: 11585115  
 Conc: 0.68 ng/ml

Instrument :  
 ECD\_L  
 ClientSampleId :  
 CL-02-053119-D



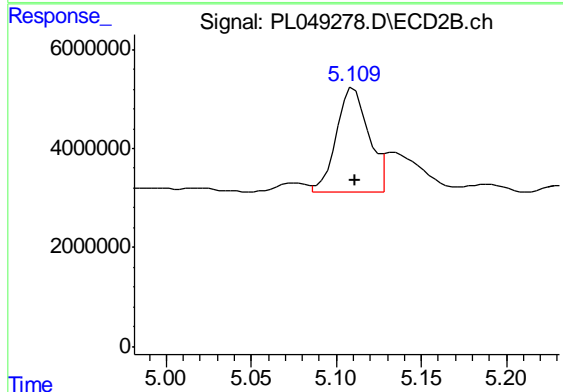
#3 gamma-BHC (Lindane)

R.T.: 0.000 min  
 Exp R.T. : 4.608 min  
 Response: 0  
 Conc: N.D.



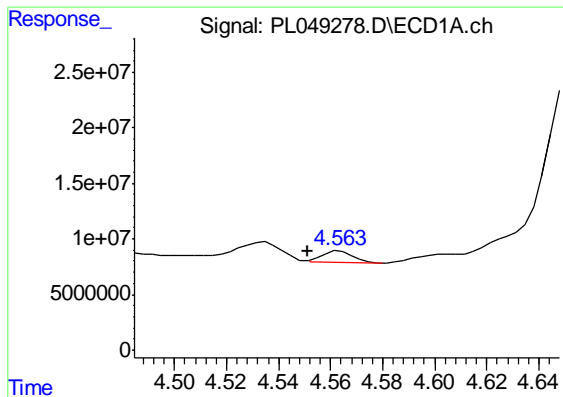
#4 Heptachlor

R.T.: 4.311 min  
 Delta R.T.: 0.000 min  
 Response: 100090650  
 Conc: 5.65 ng/ml



#4 Heptachlor

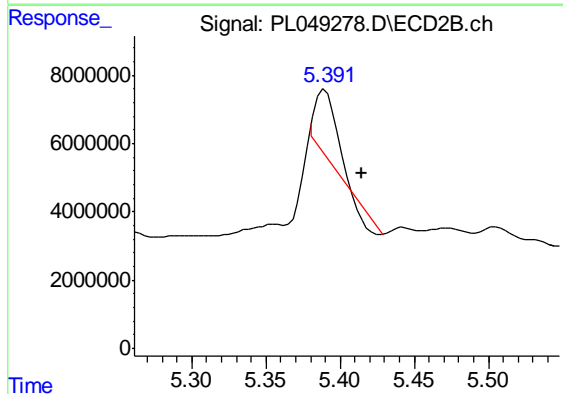
R.T.: 5.110 min  
 Delta R.T.: -0.001 min  
 Response: 27619534  
 Conc: 6.87 ng/ml



#5 Aldrin

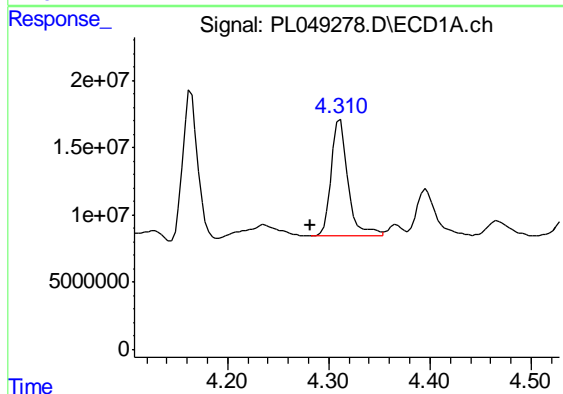
R.T.: 4.564 min  
 Delta R.T.: 0.013 min  
 Response: 7873157  
 Conc: 0.46 ng/ml

Instrument :  
 ECD\_L  
 ClientSampleId :  
 CL-02-053119-D



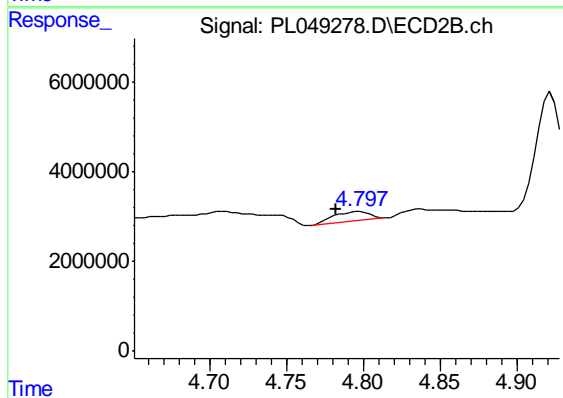
#5 Aldrin

R.T.: 5.390 min  
 Delta R.T.: -0.024 min  
 Response: 17565051  
 Conc: 4.77 ng/ml



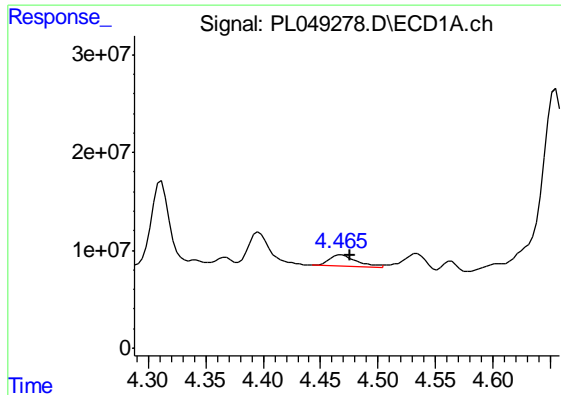
#6 beta-BHC

R.T.: 4.311 min  
 Delta R.T.: 0.030 min  
 Response: 100090650  
 Conc: 14.40 ng/ml



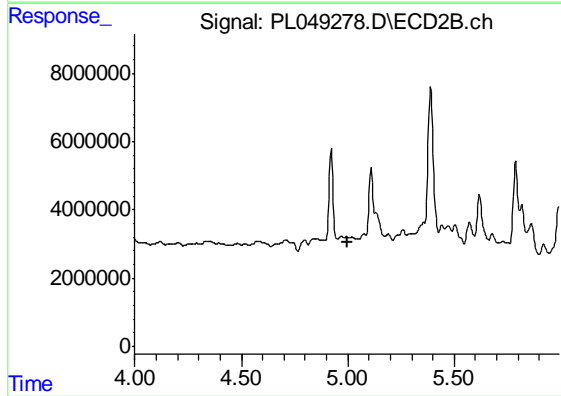
#6 beta-BHC

R.T.: 4.799 min  
 Delta R.T.: 0.016 min  
 Response: 3079366  
 Conc: 1.79 ng/ml

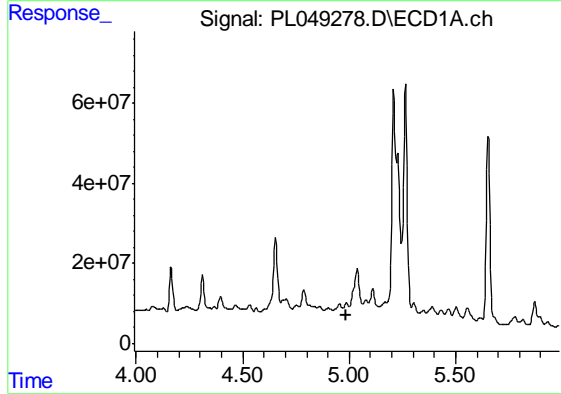


#7 delta-BHC  
 R.T.: 4.467 min  
 Delta R.T.: -0.008 min  
 Response: 20296058  
 Conc: 1.26 ng/ml

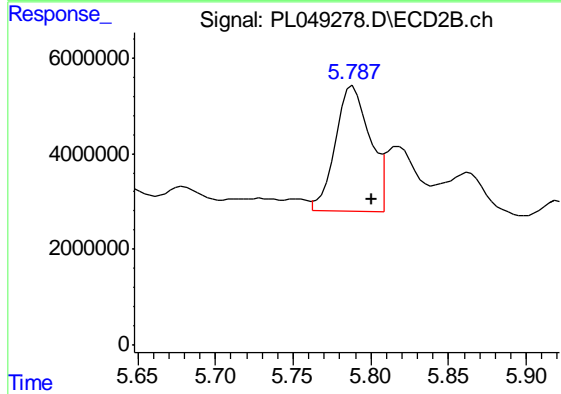
Instrument :  
 ECD\_L  
 ClientSampleId :  
 CL-02-053119-D



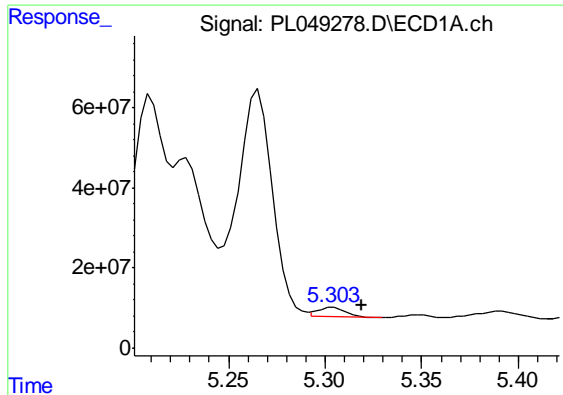
#7 delta-BHC  
 R.T.: 0.000 min  
 Exp R.T. : 4.997 min  
 Response: 0  
 Conc: N.D.



#8 Heptachlor epoxide  
 R.T.: 4.987 min  
 Delta R.T.: 0.000 min  
 Response: -537693  
 Conc: N.D.



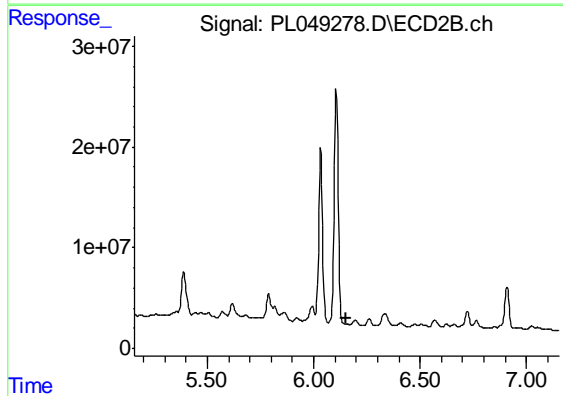
#8 Heptachlor epoxide  
 R.T.: 5.789 min  
 Delta R.T.: -0.012 min  
 Response: 40629227  
 Conc: 12.43 ng/ml



#9 Endosulfan I

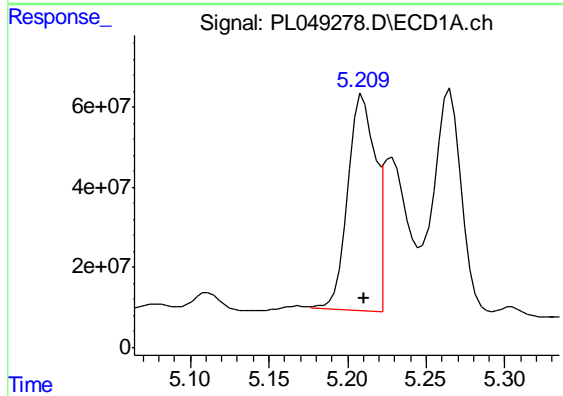
R.T.: 5.304 min  
 Delta R.T.: -0.014 min  
 Response: 23874092  
 Conc: 1.63 ng/ml

Instrument :  
 ECD\_L  
 ClientSampleId :  
 CL-02-053119-D



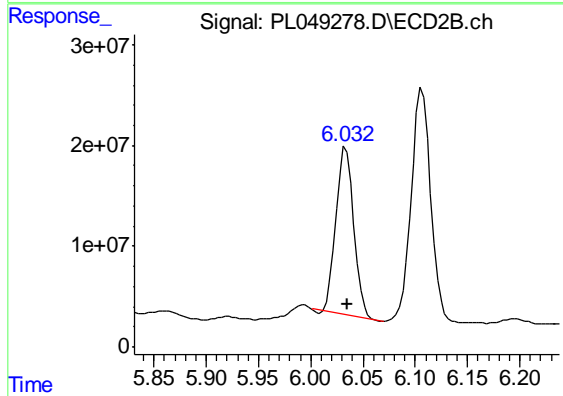
#9 Endosulfan I

R.T.: 0.000 min  
 Exp R.T. : 6.156 min  
 Response: 0  
 Conc: N.D.



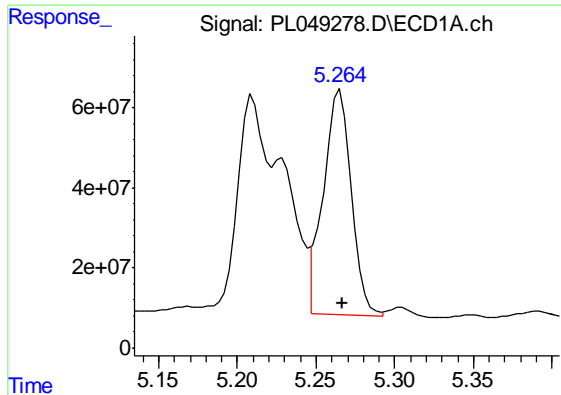
#10 gamma-Chlordane

R.T.: 5.210 min  
 Delta R.T.: 0.000 min  
 Response: 656518609  
 Conc: 41.12 ng/ml



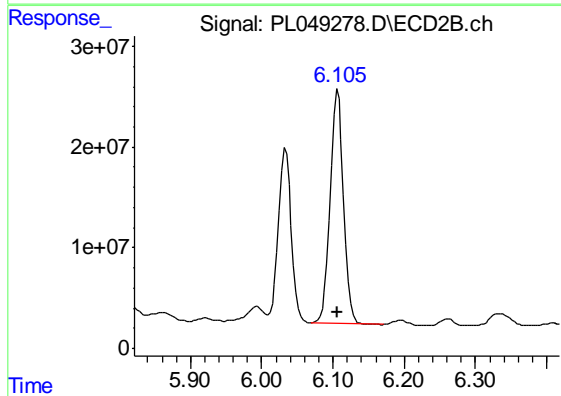
#10 gamma-Chlordane

R.T.: 6.034 min  
 Delta R.T.: -0.001 min  
 Response: 197805990  
 Conc: 57.18 ng/ml

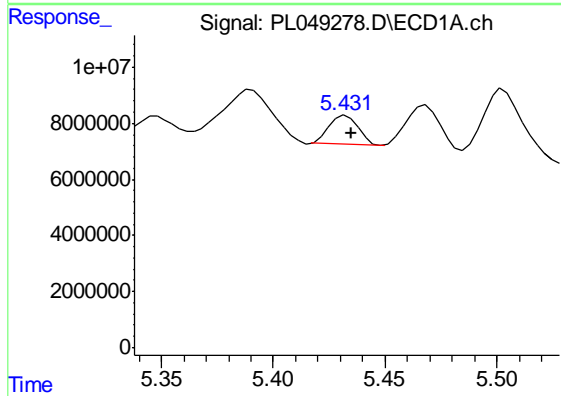


#11 alpha-Chlordane  
 R.T.: 5.265 min  
 Delta R.T.: -0.001 min  
 Response: 708472539  
 Conc: 45.35 ng/ml

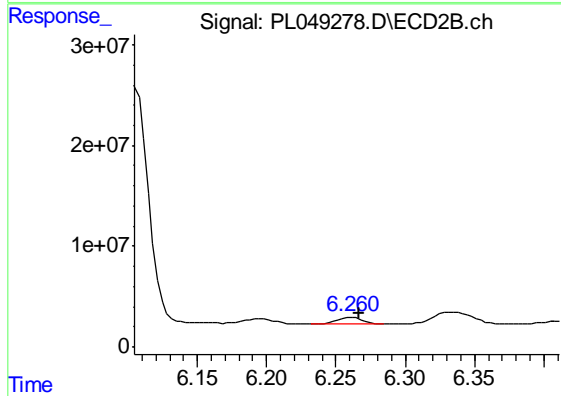
Instrument :  
 ECD\_L  
 ClientSampleId :  
 CL-02-053119-D



#11 alpha-Chlordane  
 R.T.: 6.107 min  
 Delta R.T.: 0.000 min  
 Response: 301877864  
 Conc: 87.02 ng/ml

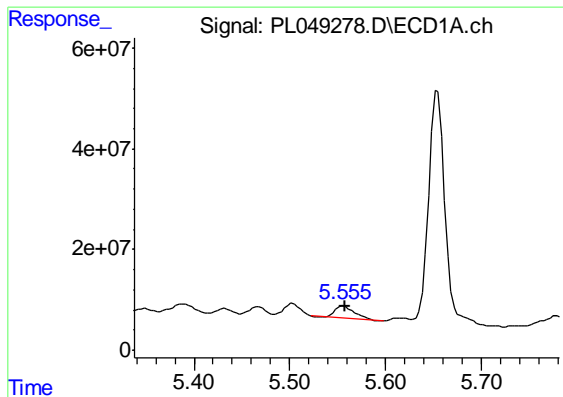


#12 4,4'-DDE  
 R.T.: 5.433 min  
 Delta R.T.: -0.002 min  
 Response: 9287815  
 Conc: 0.59 ng/ml



#12 4,4'-DDE  
 R.T.: 6.262 min  
 Delta R.T.: -0.005 min  
 Response: 8846066  
 Conc: 2.69 ng/ml

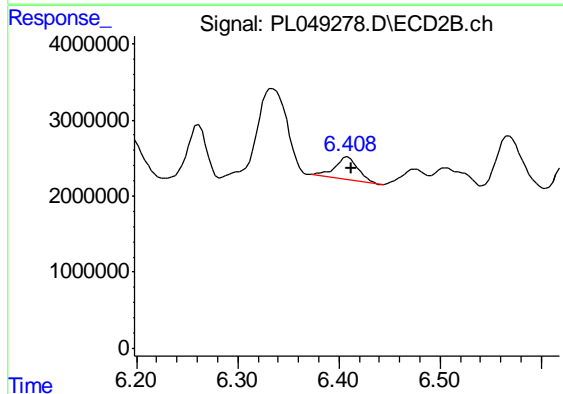




#13 Dieldrin

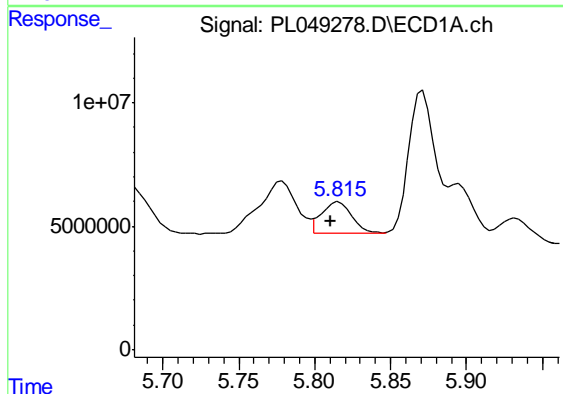
R.T.: 5.556 min  
 Delta R.T.: -0.002 min  
 Response: 33509414  
 Conc: 2.19 ng/ml

Instrument :  
 ECD\_L  
 ClientSampled :  
 CL-02-053119-D



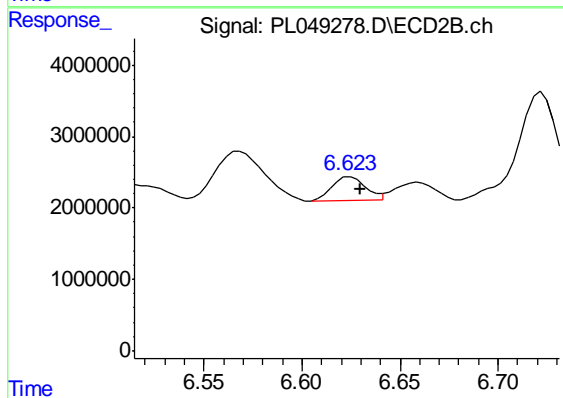
#13 Dieldrin

R.T.: 6.409 min  
 Delta R.T.: -0.003 min  
 Response: 4691152  
 Conc: 1.40 ng/ml



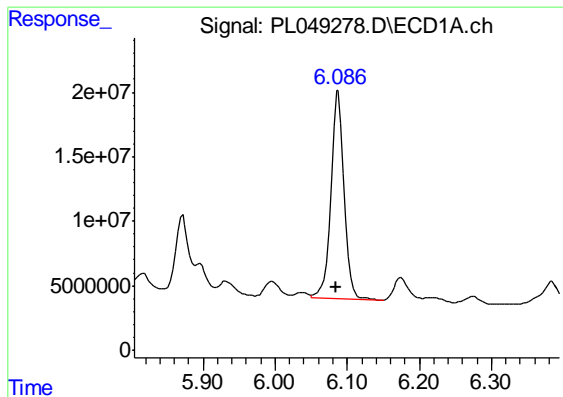
#14 Endrin

R.T.: 5.816 min  
 Delta R.T.: 0.006 min  
 Response: 17508209  
 Conc: 1.21 ng/ml



#14 Endrin

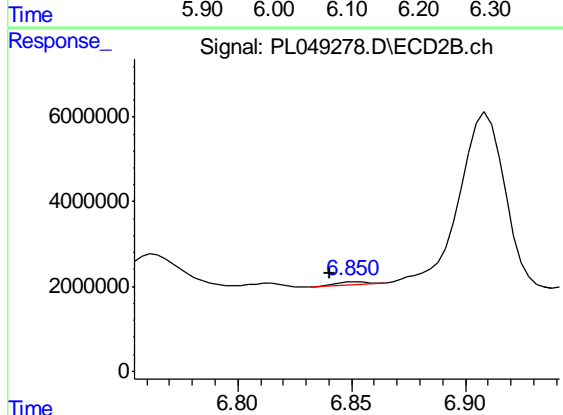
R.T.: 6.625 min  
 Delta R.T.: -0.005 min  
 Response: 3938045  
 Conc: 1.32 ng/ml



#15 Endosulfan II

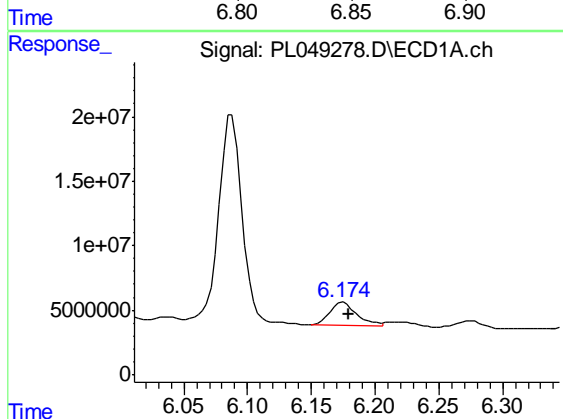
R.T.: 6.088 min  
 Delta R.T.: 0.002 min  
 Response: 207126081  
 Conc: 15.68 ng/ml

Instrument :  
 ECD\_L  
 ClientSampleId :  
 CL-02-053119-D



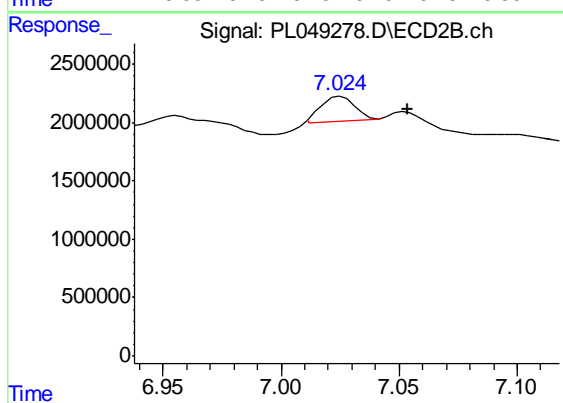
#15 Endosulfan II

R.T.: 6.851 min  
 Delta R.T.: 0.011 min  
 Response: 713677  
 Conc: 0.24 ng/ml



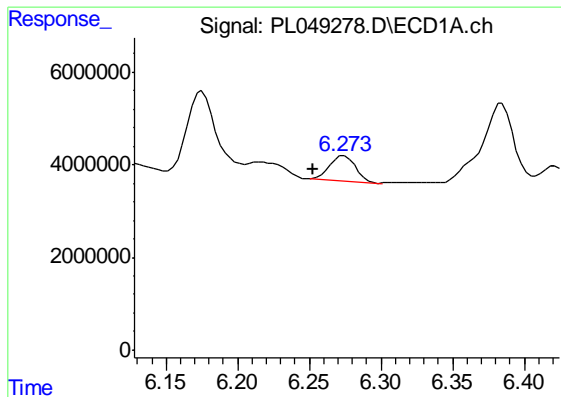
#17 4,4'-DDT

R.T.: 6.175 min  
 Delta R.T.: -0.005 min  
 Response: 25432716  
 Conc: 2.07 ng/ml



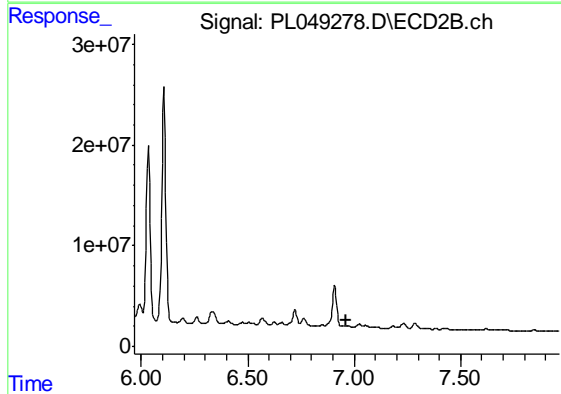
#17 4,4'-DDT

R.T.: 7.025 min  
 Delta R.T.: -0.028 min  
 Response: 2055801  
 Conc: 0.73 ng/ml

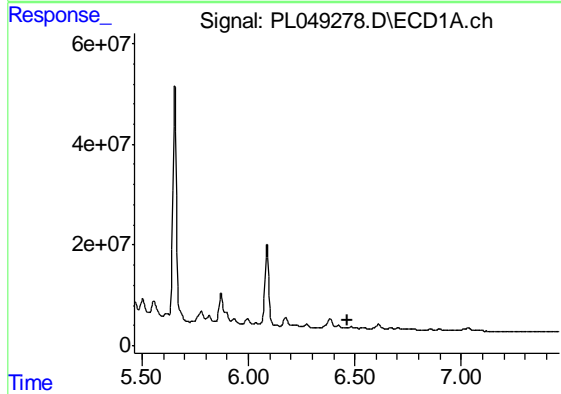


#18 Endrin aldehyde  
 R.T.: 6.275 min  
 Delta R.T.: 0.022 min  
 Response: 6879972  
 Conc: 0.63 ng/ml

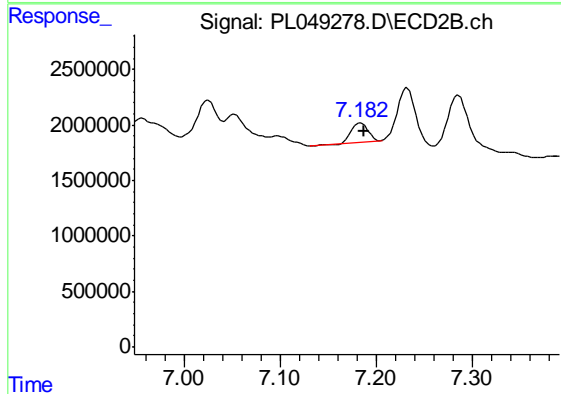
Instrument :  
 ECD\_L  
 ClientSampleId :  
 CL-02-053119-D



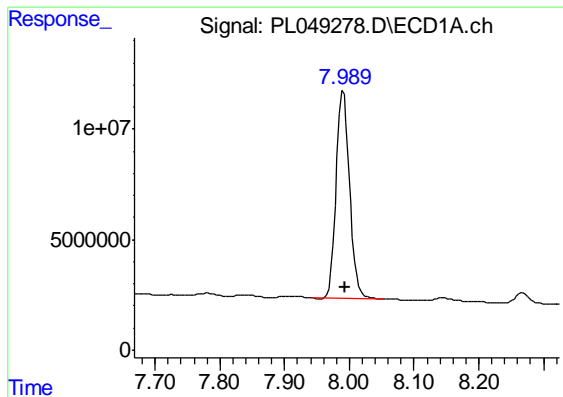
#18 Endrin aldehyde  
 R.T.: 0.000 min  
 Exp R.T. : 6.965 min  
 Response: 0  
 Conc: N.D.



#19 Endosulfan Sulfate  
 R.T.: 0.000 min  
 Exp R.T. : 6.464 min  
 Response: 0  
 Conc: N.D.



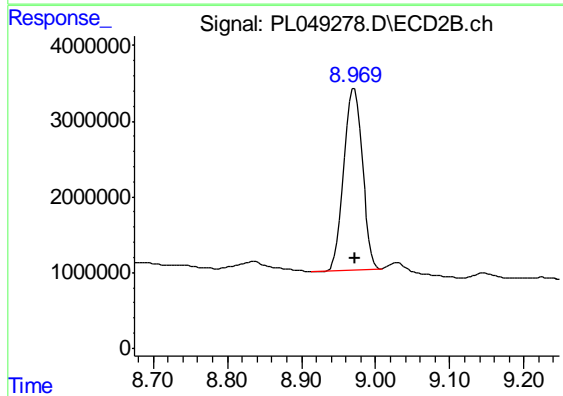
#19 Endosulfan Sulfate  
 R.T.: 7.184 min  
 Delta R.T.: -0.004 min  
 Response: 2137722  
 Conc: 0.70 ng/ml



#28 Decachlorobiphenyl

R.T.: 7.990 min  
Delta R.T.: -0.002 min  
Response: 134161360  
Conc: 10.55 ng/ml

Instrument :  
ECD\_L  
ClientSampleId :  
CL-02-053119-D



#28 Decachlorobiphenyl

R.T.: 8.971 min  
Delta R.T.: -0.002 min  
Response: 41498308  
Conc: 12.43 ng/ml