

Data Path : Z:\pestpcbsrv\HPCHEM1\ECD\_L\Data\PL060421\  
 Data File : PL067071.D  
 Signal(s) : Signal #1: ECD1A.ch Signal #2: ECD2B.ch  
 Acq On : 04 Jun 2021 13:55  
 Operator : AR\AJ  
 Sample : M2580-10  
 Misc :  
 ALS Vial : 7 Sample Multiplier: 1

Instrument :  
 ECD\_L  
 ClientSampled :

Integration File signal 1: autoint1.e  
 Integration File signal 2: autoint2.e  
 Quant Time: Jun 05 04:32:23 2021  
 Quant Method : Z:\pestpcbsrv\HPCHEM1\ECD\_L\methods\PL060121.M  
 Quant Title : GC Extractables  
 QLast Update : Wed Jun 02 14:20:39 2021  
 Response via : Initial Calibration  
 Integrator: ChemStation

Volume Inj. : 1 µl  
 Signal #1 Phase : ZB-MR2 Signal #2 Phase: ZB-MR1  
 Signal #1 Info : 30M x 0.32mm x0.2 Signal #2 Info : 30M x 0.32mm x0.5µm

	Compound	RT#1	RT#2	Resp#1	Resp#2	ng/ml	ng/ml
-----							
System Monitoring Compounds							
1)	SA Tetrachlo...	4.479	5.530	5868571	8590585	14.331	13.280
28)	SA Decachlor...	10.223	11.429	6950987	9985383	10.750	11.968
Target Compounds							
4)	MA Heptachlor	5.986f	7.153	1220751	231751	2.324	0.329 #
5)	MB Aldrin	6.332	7.502f	197223	1137004	0.361	1.557 #
6)	B beta-BHC	5.986	0.000	1220751	0	4.583	N.D. #
7)	B delta-BHC	0.000	7.002f	0	2539441	N.D.	3.344 #
8)	B Heptachlo...	0.000	7.990	0	1963164	N.D.	2.812 #
10)	B gamma-Chl...	7.181	8.259	2079372	3118341	3.629	4.391
11)	B alpha-Chl...	7.250	8.341	2772428	4972672	4.822	7.000 #
12)	B 4,4'-DDE	7.470	8.528	7184411	9825152	13.456	15.030
13)	MA Dieldrin	7.604	8.681	726641	627895	1.303	0.950 #
14)	MA Endrin	7.863f	8.922	353027	398611	0.682	0.706
15)	B Endosulfa...	8.178	0.000	6893711	0	13.306	N.D. #
16)	A 4,4'-DDD	8.051	9.069	500860	2111562	1.105	3.907 #
17)	MA 4,4'-DDT	8.305	0.000	2131061	0	4.623	N.D. #
18)	B Endrin al...	8.355f	0.000	714376	0	1.552	N.D. #
19)	B Endosulfa...	8.614	0.000	696050	0	1.260	N.D. #
21)	B Endrin ke...	0.000	10.051f	0	366005	N.D.	0.505 #
23)	Chlordane-1	5.799	6.911	613067	471431	40.203	23.003 #
24)	Chlordane-2	6.486	7.502	4696171	1137004	214.904	38.612 #
25)	Chlordane-3	7.181	8.259	2079372	3118341	35.693	29.789
26)	Chlordane-4	7.250	8.341	2772428	4972672	43.434	39.012
27)	Chlordane-5	8.178	9.227	6893711	754759	365.349	31.129 #

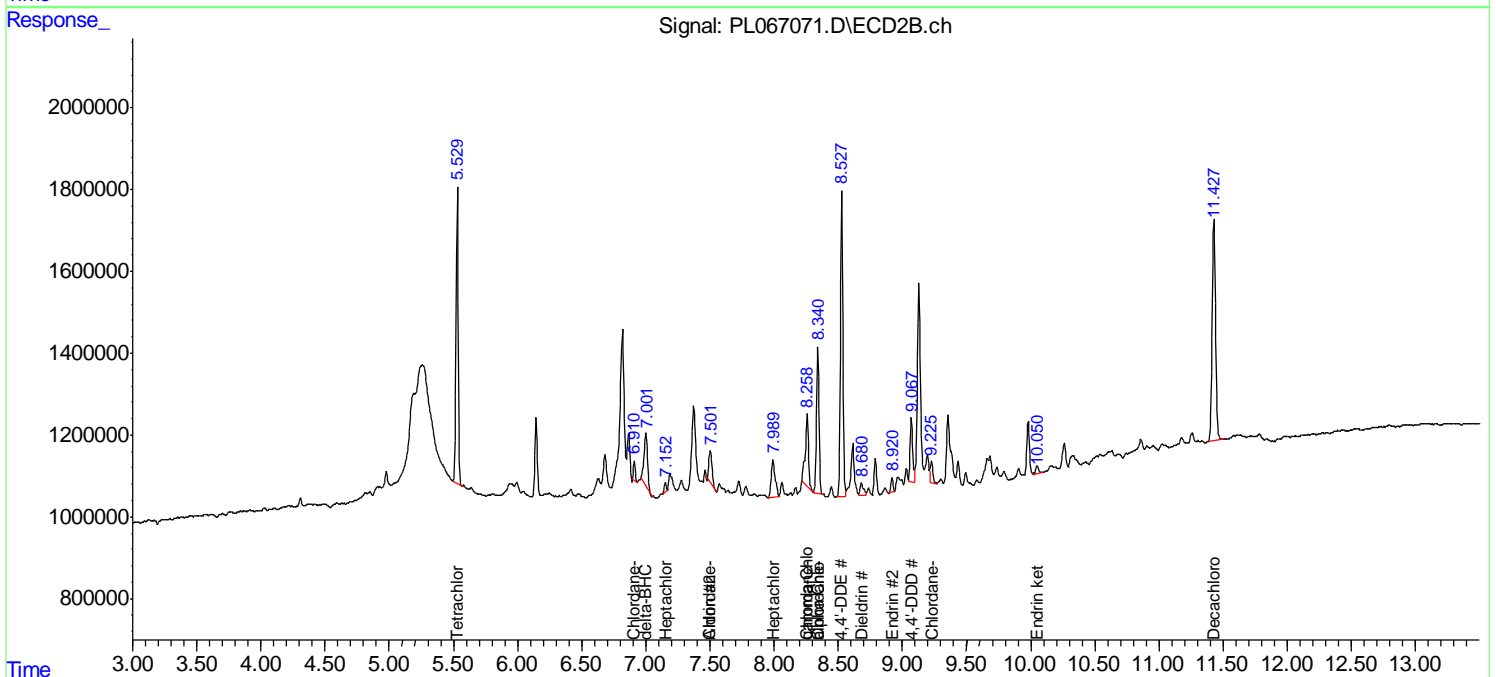
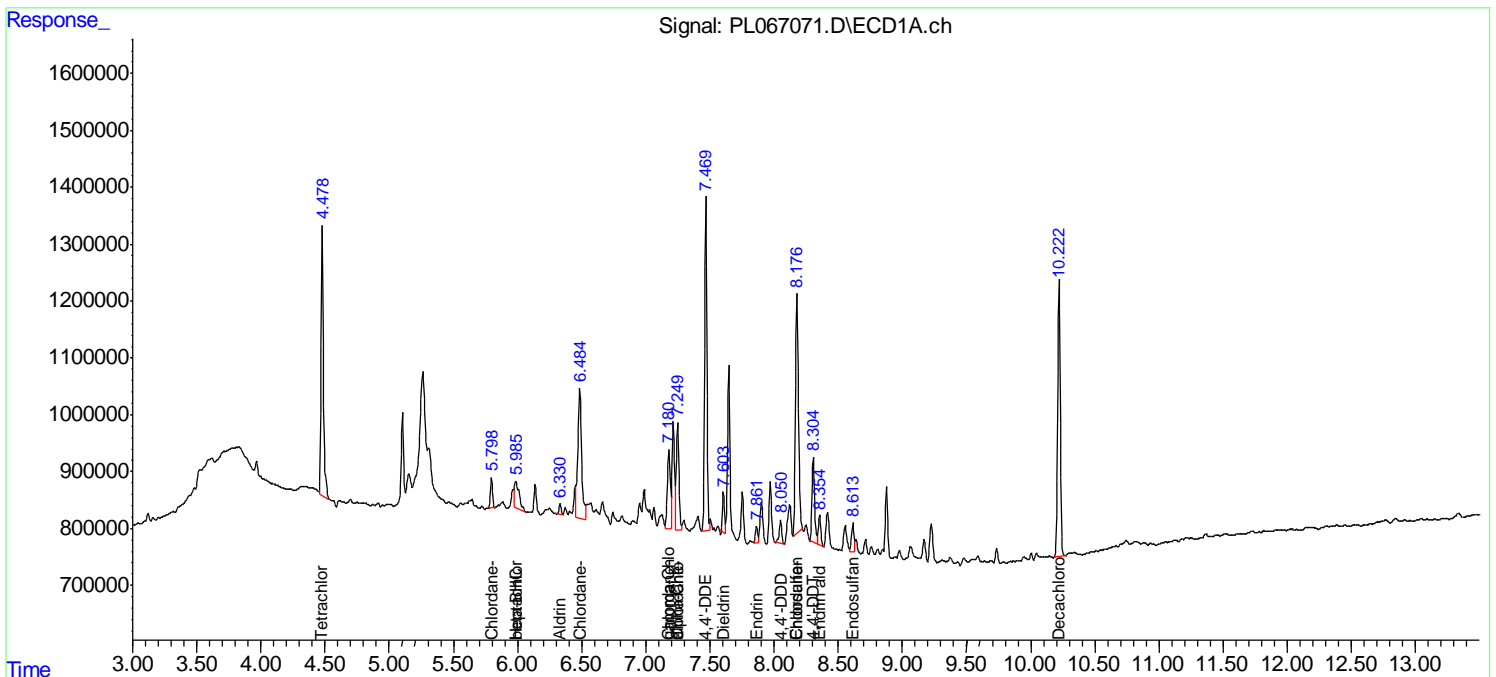
(f)=RT Delta > 1/2 Window (#)=Amounts differ by > 25% (m)=manual int.

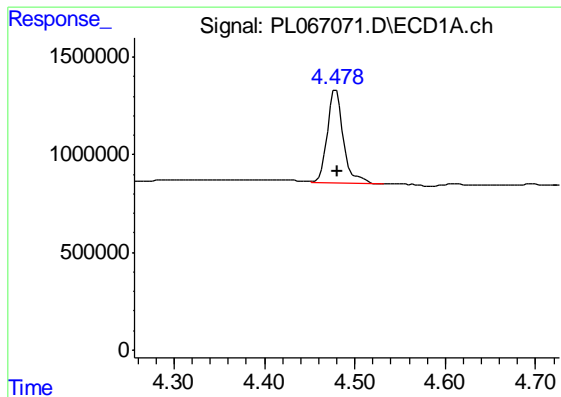
Data Path : Z:\pestpcbsrv\HPCHEM1\ECD\_L\Data\PL060421\  
 Data File : PL067071.D  
 Signal(s) : Signal #1: ECD1A.ch Signal #2: ECD2B.ch  
 Acq On : 04 Jun 2021 13:55  
 Operator : AR\AJ  
 Sample : M2580-10  
 Misc :  
 ALS Vial : 7 Sample Multiplier: 1

Instrument :  
 ECD\_L  
 ClientSampled :

Integration File signal 1: autoint1.e  
 Integration File signal 2: autoint2.e  
 Quant Time: Jun 05 04:32:23 2021  
 Quant Method : Z:\pestpcbsrv\HPCHEM1\ECD\_L\methods\PL060121.M  
 Quant Title : GC Extractables  
 QLast Update : Wed Jun 02 14:20:39 2021  
 Response via : Initial Calibration  
 Integrator: ChemStation

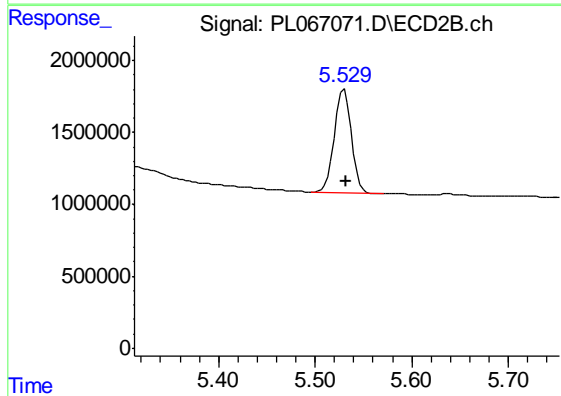
Volume Inj. : 1 µl  
 Signal #1 Phase : ZB-MR2 Signal #2 Phase: ZB-MR1  
 Signal #1 Info : 30M x 0.32mm x0.2 Signal #2 Info : 30M x 0.32mm x0.5µm



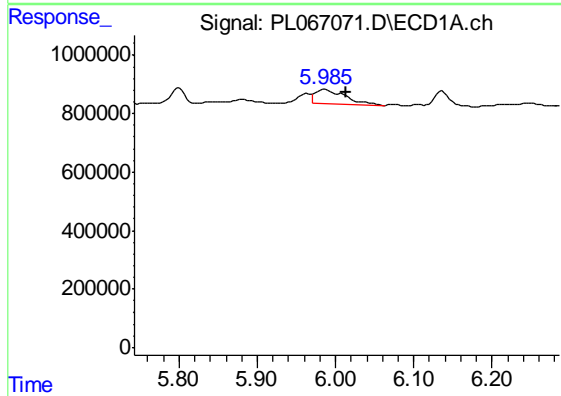


#1 Tetrachloro-m-xylene  
 R.T.: 4.479 min  
 Delta R.T.: -0.002 min  
 Response: 5868571  
 Conc: 14.33 ng/ml

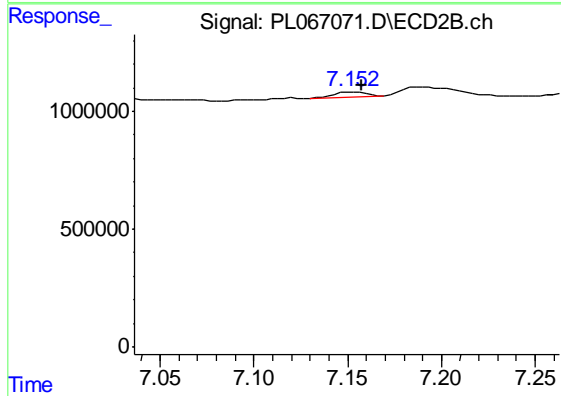
Instrument :  
 ECD\_L  
 ClientSampled :



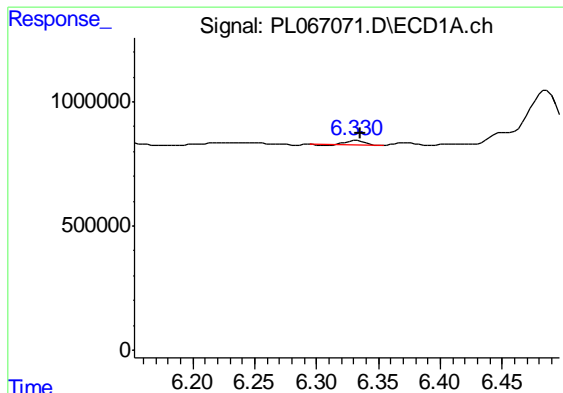
#1 Tetrachloro-m-xylene  
 R.T.: 5.530 min  
 Delta R.T.: -0.003 min  
 Response: 8590585  
 Conc: 13.28 ng/ml



#4 Heptachlor  
 R.T.: 5.986 min  
 Delta R.T.: -0.027 min  
 Response: 1220751  
 Conc: 2.32 ng/ml

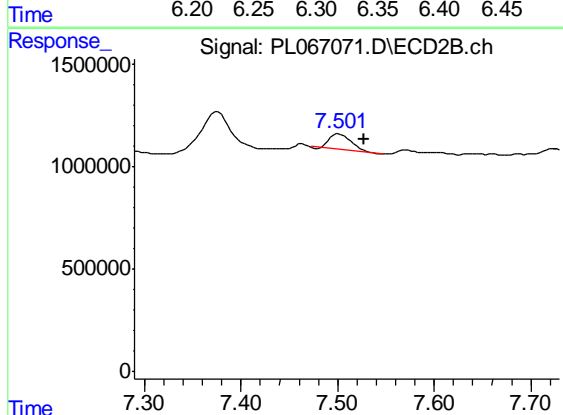


#4 Heptachlor  
 R.T.: 7.153 min  
 Delta R.T.: -0.004 min  
 Response: 231751  
 Conc: 0.33 ng/ml

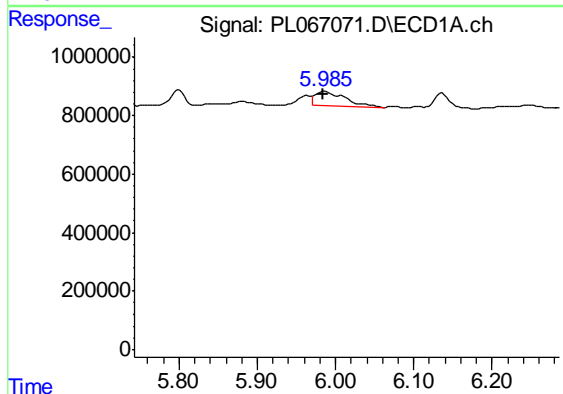


#5 Aldrin  
 R.T.: 6.332 min  
 Delta R.T.: -0.003 min  
 Response: 197223  
 Conc: 0.36 ng/ml

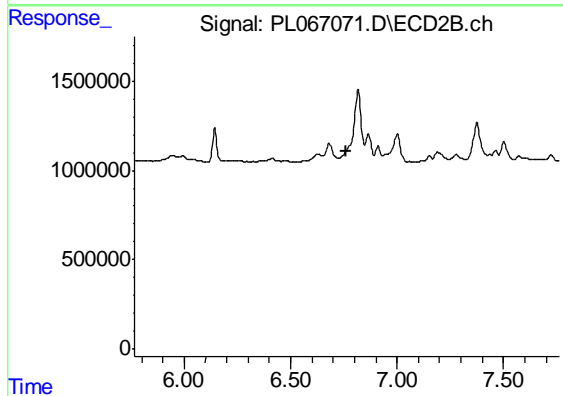
Instrument :  
 ECD\_L  
 ClientSampled :



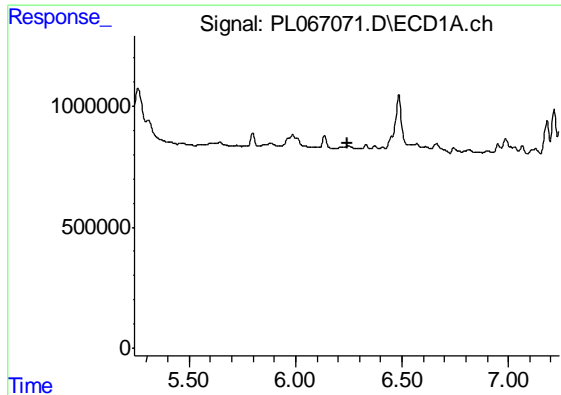
#5 Aldrin  
 R.T.: 7.502 min  
 Delta R.T.: -0.025 min  
 Response: 1137004  
 Conc: 1.56 ng/ml



#6 beta-BHC  
 R.T.: 5.986 min  
 Delta R.T.: 0.001 min  
 Response: 1220751  
 Conc: 4.58 ng/ml



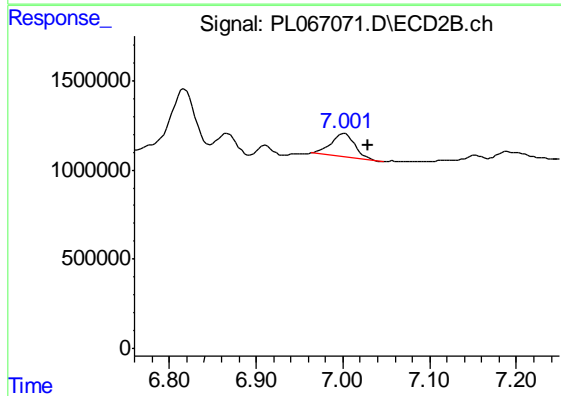
#6 beta-BHC  
 R.T.: 0.000 min  
 Exp R.T. : 6.763 min  
 Response: 0  
 Conc: N.D.



#7 delta-BHC

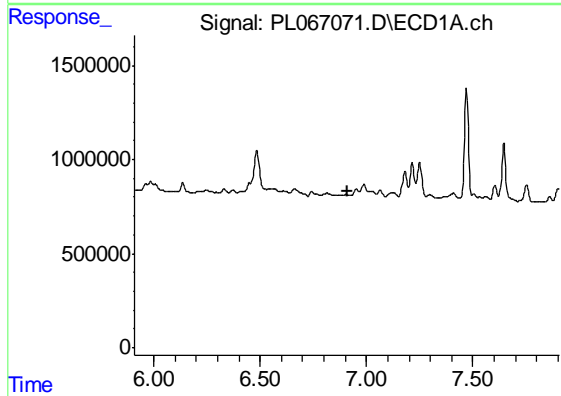
R.T.: 0.000 min  
 Exp R.T. : 6.241 min  
 Response: 0  
 Conc: N.D.

Instrument :  
 ECD\_L  
 ClientSampled :



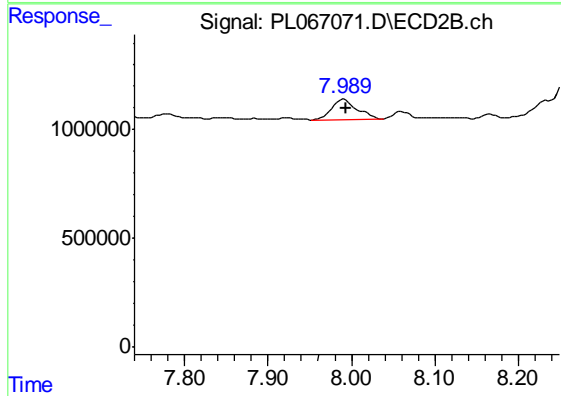
#7 delta-BHC

R.T.: 7.002 min  
 Delta R.T.: -0.027 min  
 Response: 2539441  
 Conc: 3.34 ng/ml



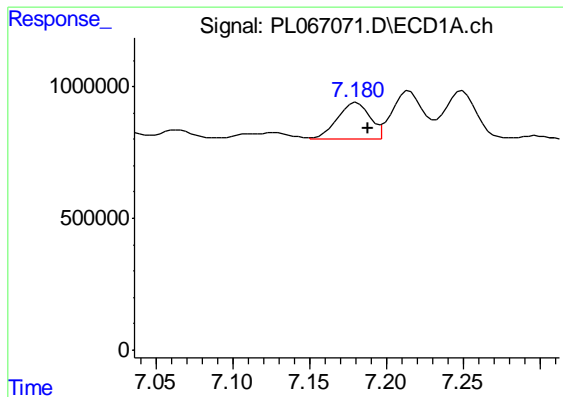
#8 Heptachlor epoxide

R.T.: 0.000 min  
 Exp R.T. : 6.909 min  
 Response: 0  
 Conc: N.D.



#8 Heptachlor epoxide

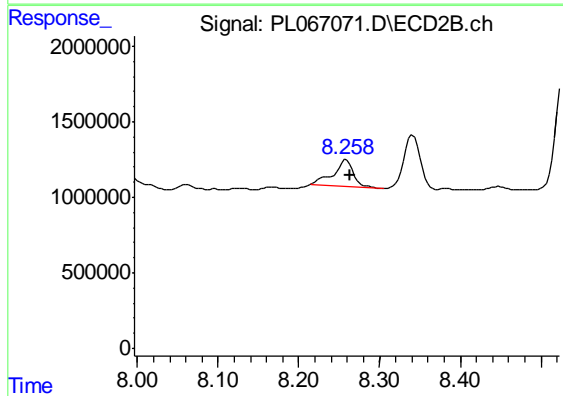
R.T.: 7.990 min  
 Delta R.T.: -0.003 min  
 Response: 1963164  
 Conc: 2.81 ng/ml



#10 gamma-Chlordane

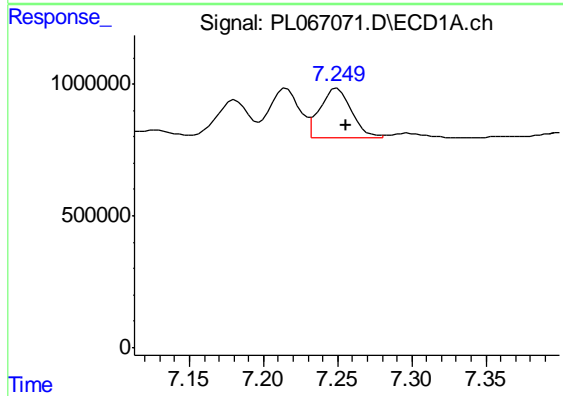
R.T.: 7.181 min  
 Delta R.T.: -0.007 min  
 Response: 2079372  
 Conc: 3.63 ng/ml

Instrument :  
 ECD\_L  
 ClientSampled :



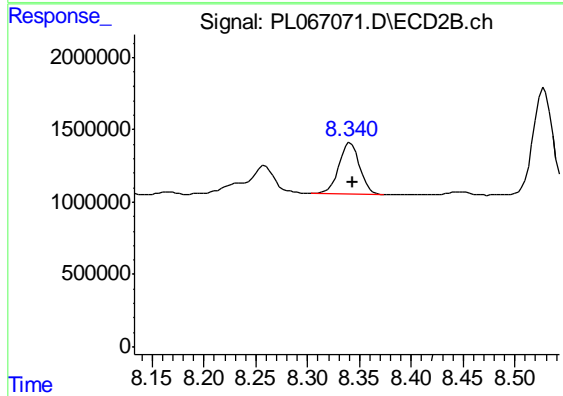
#10 gamma-Chlordane

R.T.: 8.259 min  
 Delta R.T.: -0.004 min  
 Response: 3118341  
 Conc: 4.39 ng/ml



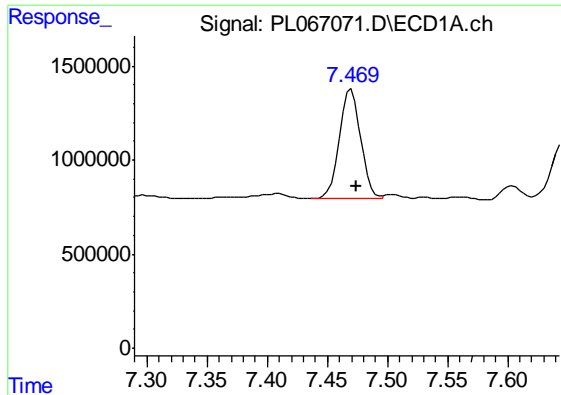
#11 alpha-Chlordane

R.T.: 7.250 min  
 Delta R.T.: -0.006 min  
 Response: 2772428  
 Conc: 4.82 ng/ml



#11 alpha-Chlordane

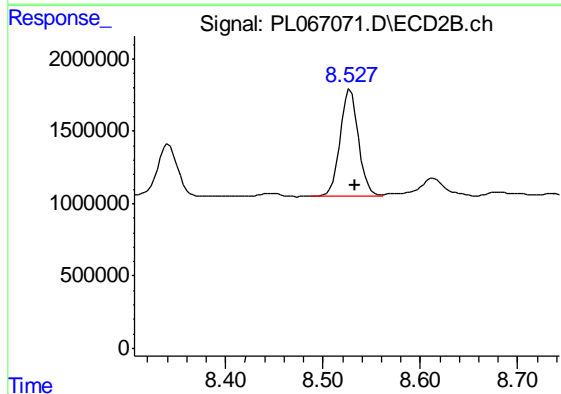
R.T.: 8.341 min  
 Delta R.T.: -0.002 min  
 Response: 4972672  
 Conc: 7.00 ng/ml



#12 4,4'-DDE

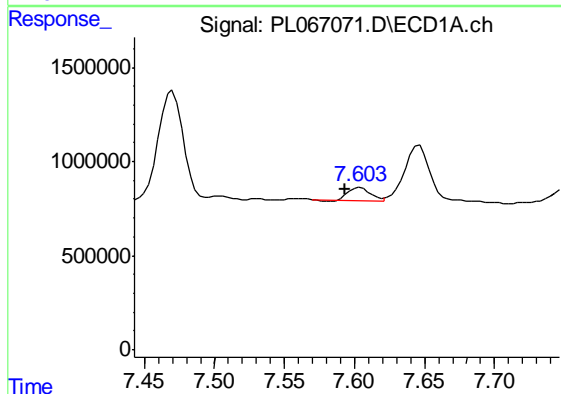
R.T.: 7.470 min  
 Delta R.T.: -0.004 min  
 Response: 7184411  
 Conc: 13.46 ng/ml

Instrument :  
 ECD\_L  
 ClientSampled :



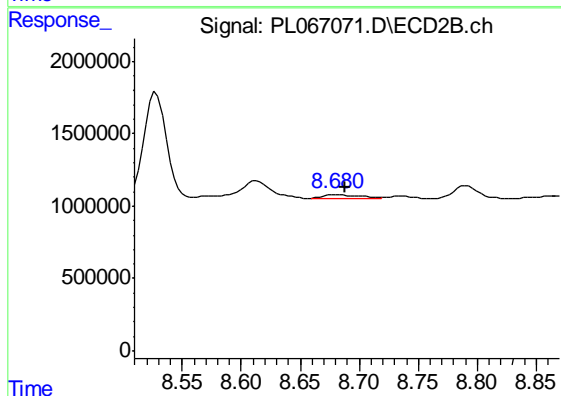
#12 4,4'-DDE

R.T.: 8.528 min  
 Delta R.T.: -0.005 min  
 Response: 9825152  
 Conc: 15.03 ng/ml



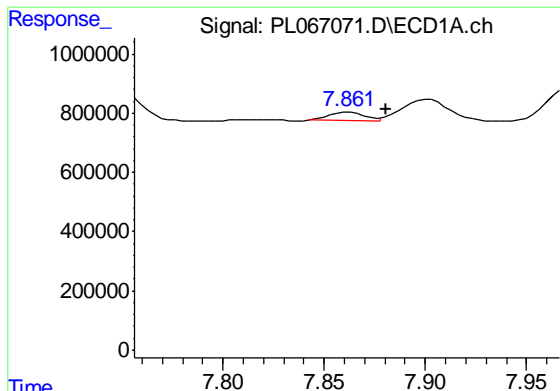
#13 Dieldrin

R.T.: 7.604 min  
 Delta R.T.: 0.011 min  
 Response: 726641  
 Conc: 1.30 ng/ml



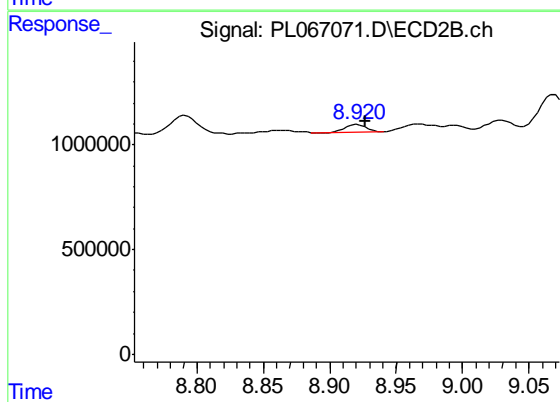
#13 Dieldrin

R.T.: 8.681 min  
 Delta R.T.: -0.007 min  
 Response: 627895  
 Conc: 0.95 ng/ml

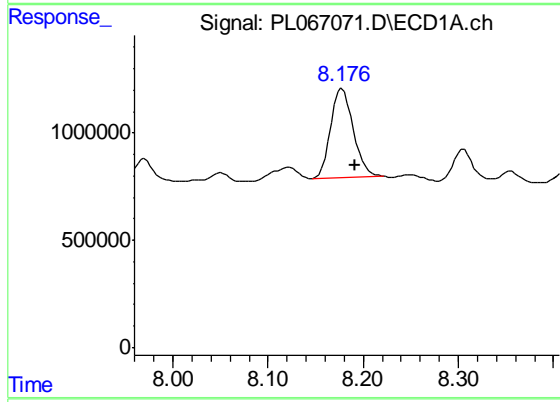


#14 Endrin  
 R.T.: 7.863 min  
 Delta R.T.: -0.018 min  
 Response: 353027  
 Conc: 0.68 ng/ml

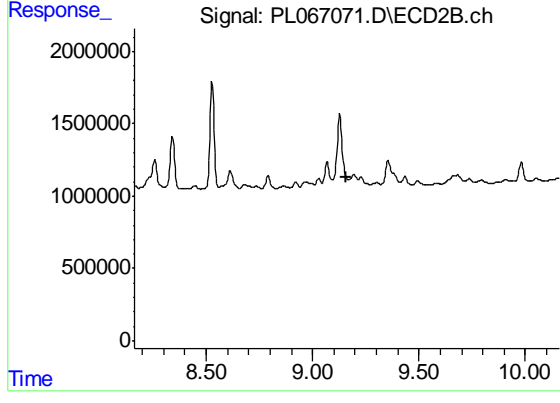
Instrument :  
 ECD\_L  
 ClientSampled :



#14 Endrin  
 R.T.: 8.922 min  
 Delta R.T.: -0.005 min  
 Response: 398611  
 Conc: 0.71 ng/ml

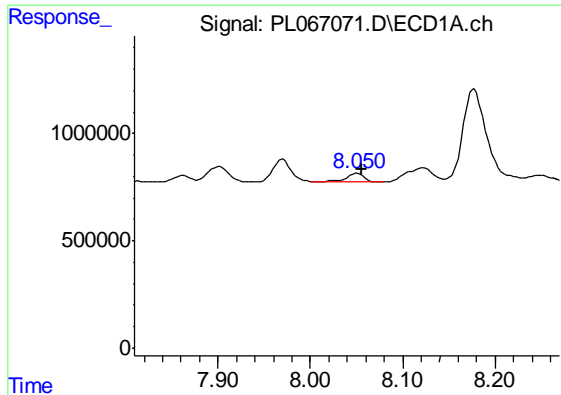


#15 Endosulfan II  
 R.T.: 8.178 min  
 Delta R.T.: -0.014 min  
 Response: 6893711  
 Conc: 13.31 ng/ml



#15 Endosulfan II  
 R.T.: 0.000 min  
 Exp R.T. : 9.161 min  
 Response: 0  
 Conc: N.D.

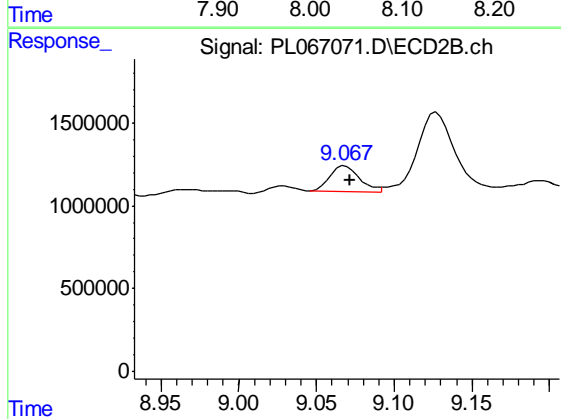




#16 4,4'-DDD

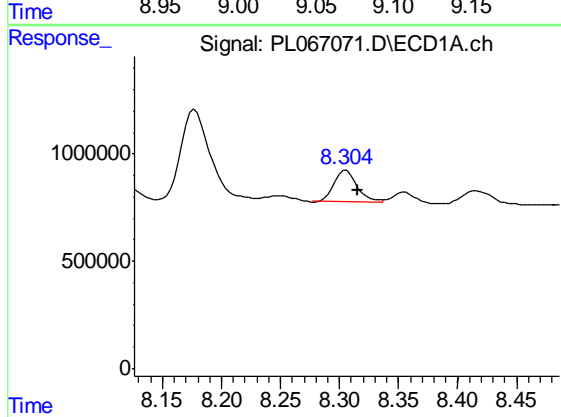
R.T.: 8.051 min  
 Delta R.T.: -0.005 min  
 Response: 500860  
 Conc: 1.11 ng/ml

Instrument :  
 ECD\_L  
 ClientSampled :



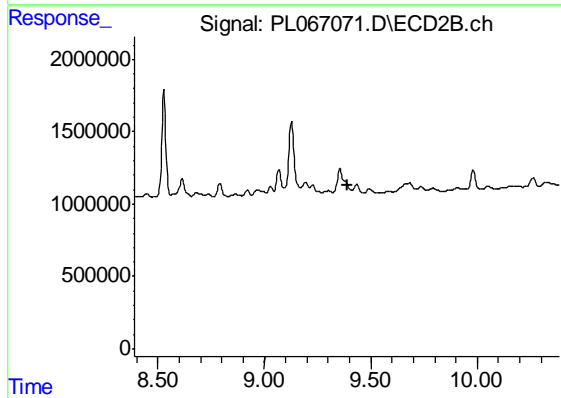
#16 4,4'-DDD

R.T.: 9.069 min  
 Delta R.T.: -0.003 min  
 Response: 2111562  
 Conc: 3.91 ng/ml



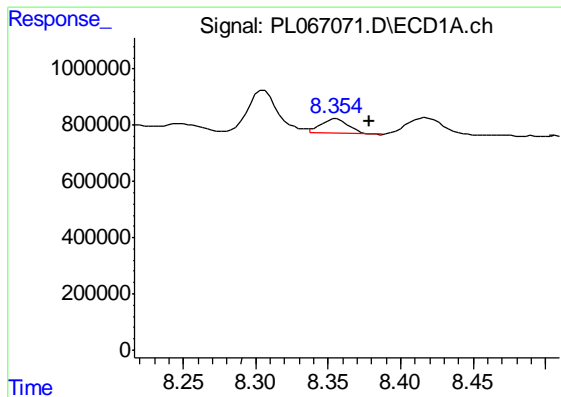
#17 4,4'-DDT

R.T.: 8.305 min  
 Delta R.T.: -0.010 min  
 Response: 2131061  
 Conc: 4.62 ng/ml



#17 4,4'-DDT

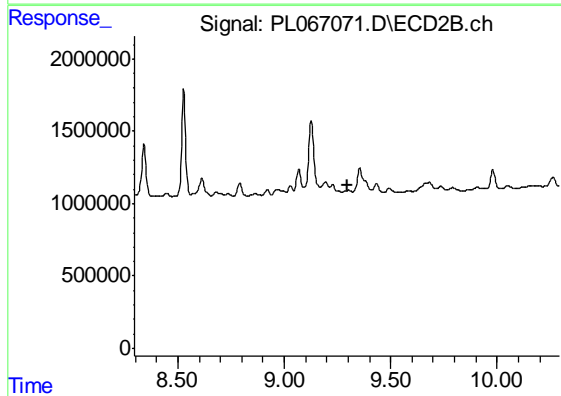
R.T.: 0.000 min  
 Exp R.T. : 9.389 min  
 Response: 0  
 Conc: N.D.



#18 Endrin aldehyde

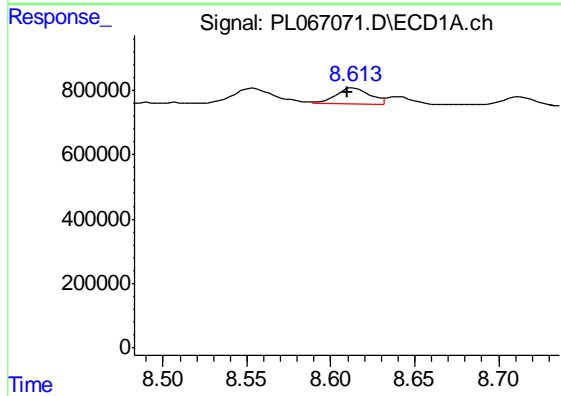
R.T.: 8.355 min  
 Delta R.T.: -0.023 min  
 Response: 714376  
 Conc: 1.55 ng/ml

Instrument :  
 ECD\_L  
 ClientSampled :



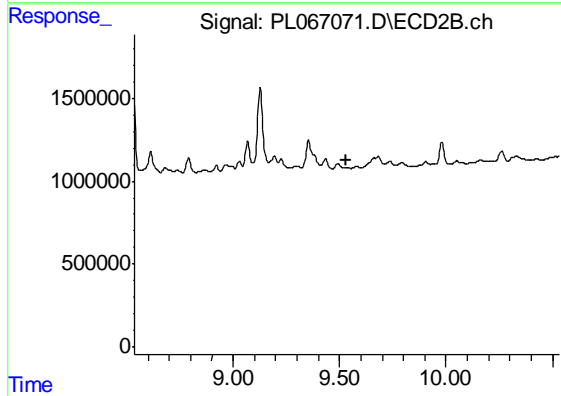
#18 Endrin aldehyde

R.T.: 0.000 min  
 Exp R.T. : 9.295 min  
 Response: 0  
 Conc: N.D.



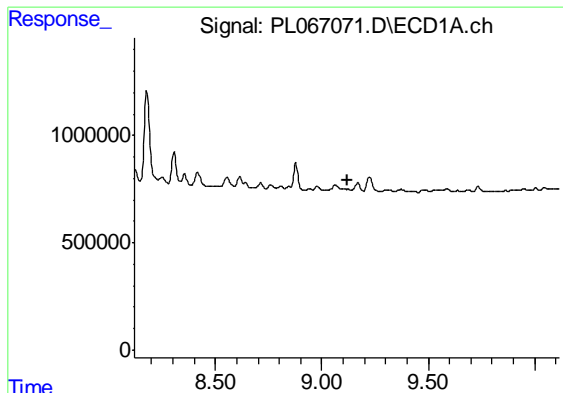
#19 Endosulfan Sulfate

R.T.: 8.614 min  
 Delta R.T.: 0.004 min  
 Response: 696050  
 Conc: 1.26 ng/ml



#19 Endosulfan Sulfate

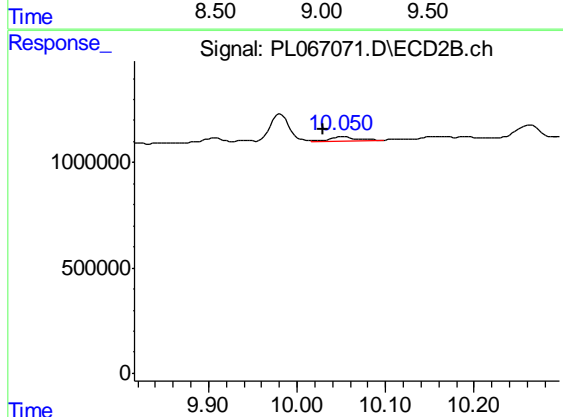
R.T.: 0.000 min  
 Exp R.T. : 9.533 min  
 Response: 0  
 Conc: N.D.



#21 Endrin ketone

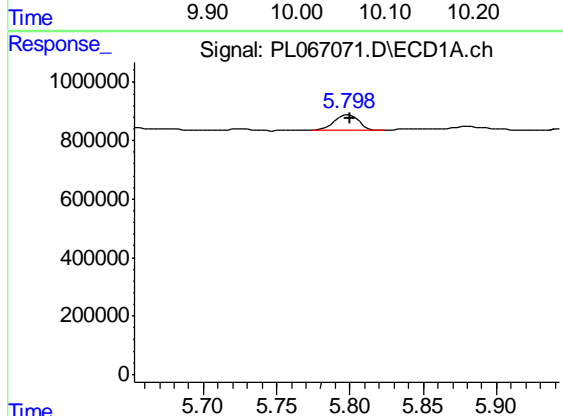
R.T.: 0.000 min  
 Exp R.T. : 9.119 min  
 Response: 0  
 Conc: N.D.

Instrument :  
 ECD\_L  
 ClientSampled :



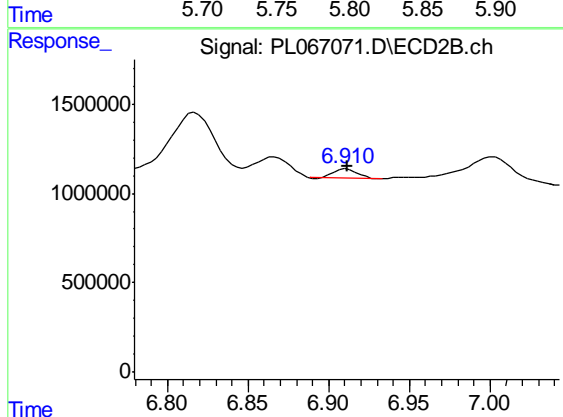
#21 Endrin ketone

R.T.: 10.051 min  
 Delta R.T.: 0.021 min  
 Response: 366005  
 Conc: 0.50 ng/ml



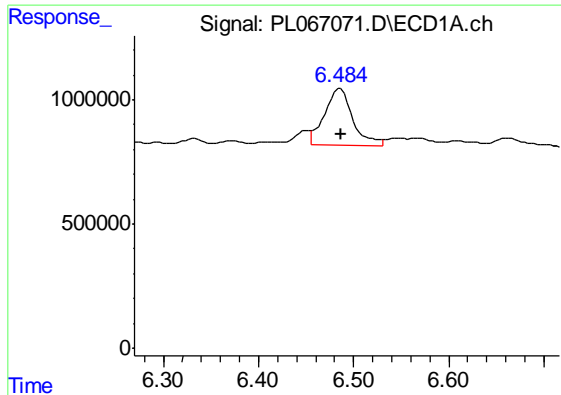
#23 Chlordane-1

R.T.: 5.799 min  
 Delta R.T.: 0.000 min  
 Response: 613067  
 Conc: 40.20 ng/ml



#23 Chlordane-1

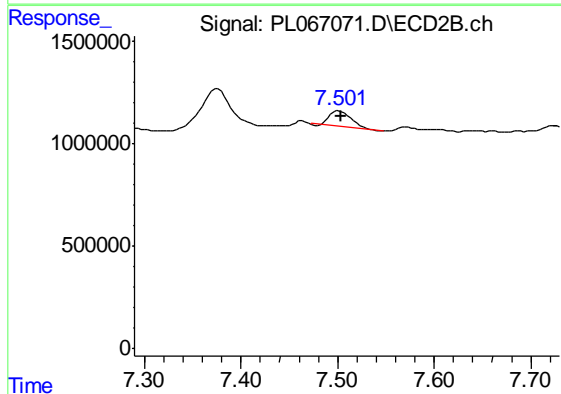
R.T.: 6.911 min  
 Delta R.T.: 0.000 min  
 Response: 471431  
 Conc: 23.00 ng/ml



#24 Chlordane-2

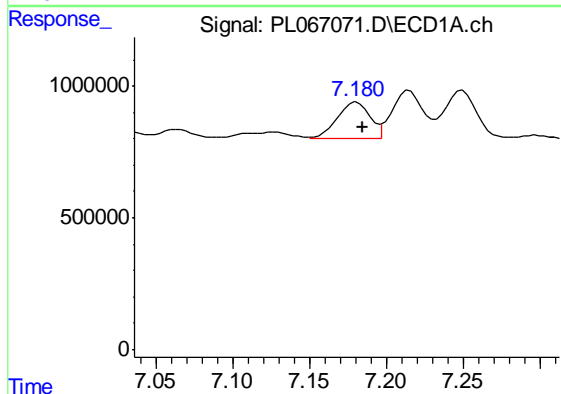
R.T.: 6.486 min  
 Delta R.T.: 0.000 min  
 Response: 4696171  
 Conc: 214.90 ng/ml

Instrument :  
 ECD\_L  
 ClientSampled :



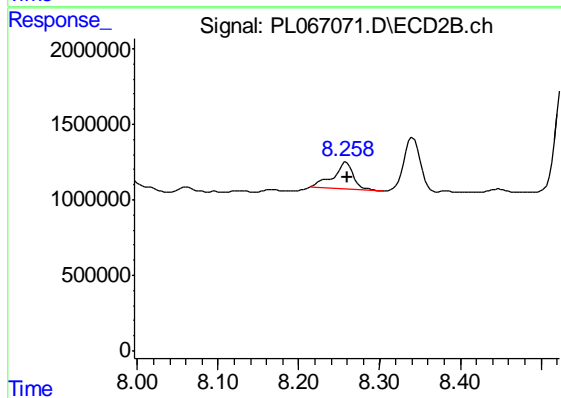
#24 Chlordane-2

R.T.: 7.502 min  
 Delta R.T.: -0.001 min  
 Response: 1137004  
 Conc: 38.61 ng/ml



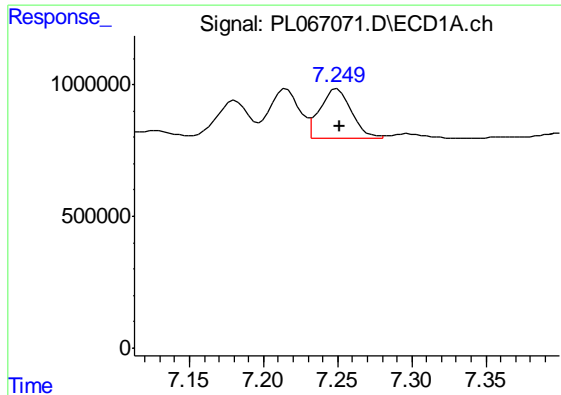
#25 Chlordane-3

R.T.: 7.181 min  
 Delta R.T.: -0.004 min  
 Response: 2079372  
 Conc: 35.69 ng/ml



#25 Chlordane-3

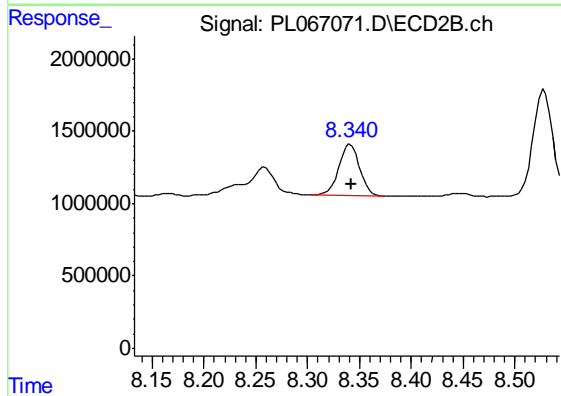
R.T.: 8.259 min  
 Delta R.T.: 0.000 min  
 Response: 3118341  
 Conc: 29.79 ng/ml



#26 Chlordane-4

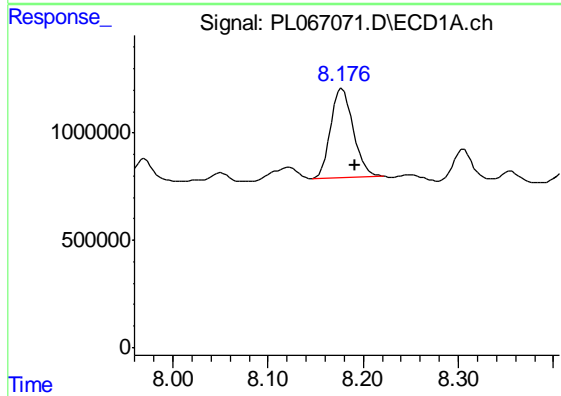
R.T.: 7.250 min  
 Delta R.T.: -0.001 min  
 Response: 2772428  
 Conc: 43.43 ng/ml

Instrument :  
 ECD\_L  
 ClientSampled :



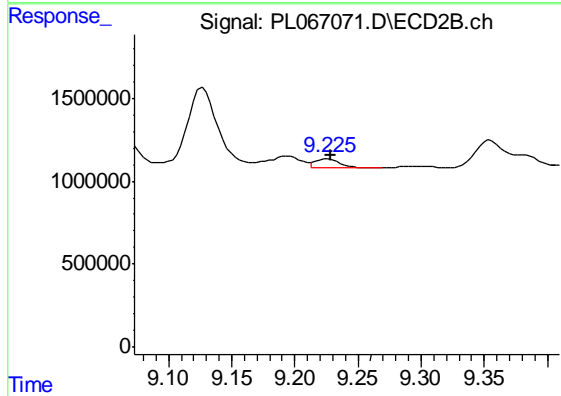
#26 Chlordane-4

R.T.: 8.341 min  
 Delta R.T.: 0.000 min  
 Response: 4972672  
 Conc: 39.01 ng/ml



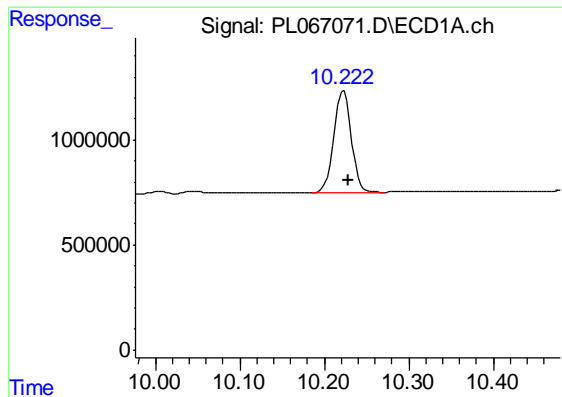
#27 Chlordane-5

R.T.: 8.178 min  
 Delta R.T.: -0.014 min  
 Response: 6893711  
 Conc: 365.35 ng/ml



#27 Chlordane-5

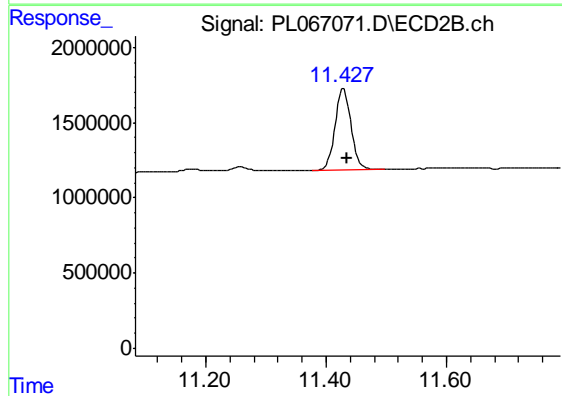
R.T.: 9.227 min  
 Delta R.T.: -0.002 min  
 Response: 754759  
 Conc: 31.13 ng/ml



#28 Decachlorobiphenyl

R.T.: 10.223 min  
Delta R.T.: -0.005 min  
Response: 6950987  
Conc: 10.75 ng/ml

Instrument :  
ECD\_L  
ClientSampleId :



#28 Decachlorobiphenyl

R.T.: 11.429 min  
Delta R.T.: -0.006 min  
Response: 9985383  
Conc: 11.97 ng/ml