

Data Path : Z:\pestpcbsrv\HPCHEM1\ECD_L\Data\PL060422\
 Data File : PL075519.D
 Signal(s) : Signal #1: ECD1A.ch Signal #2: ECD2B.ch
 Acq On : 04 Jun 2022 17:22
 Operator : AR\AJ
 Sample : PSTDICC050
 Misc :
 ALS Vial : 7 Sample Multiplier: 1

Instrument :
 ECD_L
 ClientSampleId :

Integration File signal 1: autoint1.e
 Integration File signal 2: autoint2.e
 Quant Time: Jun 06 03:11:05 2022
 Quant Method : Z:\pestpcbsrv\HPCHEM1\ECD_L\methods\PL060422.M
 Quant Title : GC Extractables
 QLast Update : Mon Jun 06 00:15:49 2022
 Response via : Initial Calibration
 Integrator: ChemStation

Volume Inj. : 1 µl
 Signal #1 Phase : ZB-MR2 Signal #2 Phase: ZB-MR1
 Signal #1 Info : 30M x 0.32mm x0.2 Signal #2 Info : 30M x 0.32mm x0.5µm

Compound	RT#1	RT#2	Resp#1	Resp#2	ng/ml	ng/ml

System Monitoring Compounds						
1) SA Tetrachlo...	5.644	4.642	32407691	79339438	52.513	51.654
28) SA Decachlor...	11.640	10.387	26620477	60611183	51.269	49.904
Target Compounds						
2) A alpha-BHC	6.228	5.344	46210675	111.3E6	53.507	53.208
3) MA gamma-BHC...	6.626	5.765	43301571	104.4E6	53.233	52.326
4) MA Heptachlor	7.281	6.173	43017218	100.6E6	51.908	52.002
5) MB Aldrin	7.655	6.497	39547040	91005560	51.924	52.106
6) B beta-BHC	6.877	6.143	19797894	46151486	53.046	51.943
7) B delta-BHC	7.148	6.403	40651696	102.9E6	53.673	52.206
8) B Heptachlo...	8.123	7.070	36530015	84038887	51.606	51.328
9) A Endosulfan I	8.531	7.472	33012482	76861215	52.362	51.481
10) B gamma-Chl...	8.393	7.347	35692193	83876299	51.636	51.369
11) B alpha-Chl...	8.474	7.416	35580968	83249498	52.301	51.109
12) B 4,4'-DDE	8.660	7.628	31047792	73710912	52.851	51.858
13) MA Dieldrin	8.821	7.758	33590340	78970110	52.382	51.661
14) MA Endrin	9.062	8.048	28406504	68981014	52.434	51.019
15) B Endosulfa...	9.296	8.358	28288247	66163547	51.082	50.216
16) A 4,4'-DDD	9.202	8.212	25904123	60855467	52.009	51.423
17) MA 4,4'-DDT	9.522	8.472	29853818	65684888	52.550	51.351
18) B Endrin al...	9.430	8.545	23243591	51456543	51.715	50.646
19) B Endosulfa...	9.669	8.776	28957758	66874654	51.522	50.920
20) A Methoxychlor	10.008	9.065	16432999	37597229	52.078	50.713
21) B Endrin ke...	10.171	9.294	32065036	73052873	51.663	51.353
22) Mirex	10.645	9.481	24870265	57619810	51.266	50.282
24) Chlordane-2	7.655f	0.000	39547040	0	1289.448	N.D. #
25) Chlordane-3	8.393	7.347	35692193	83876299	372.697	524.511 #
26) Chlordane-4	8.474	7.416	35580968	83249498	307.781	486.905 #

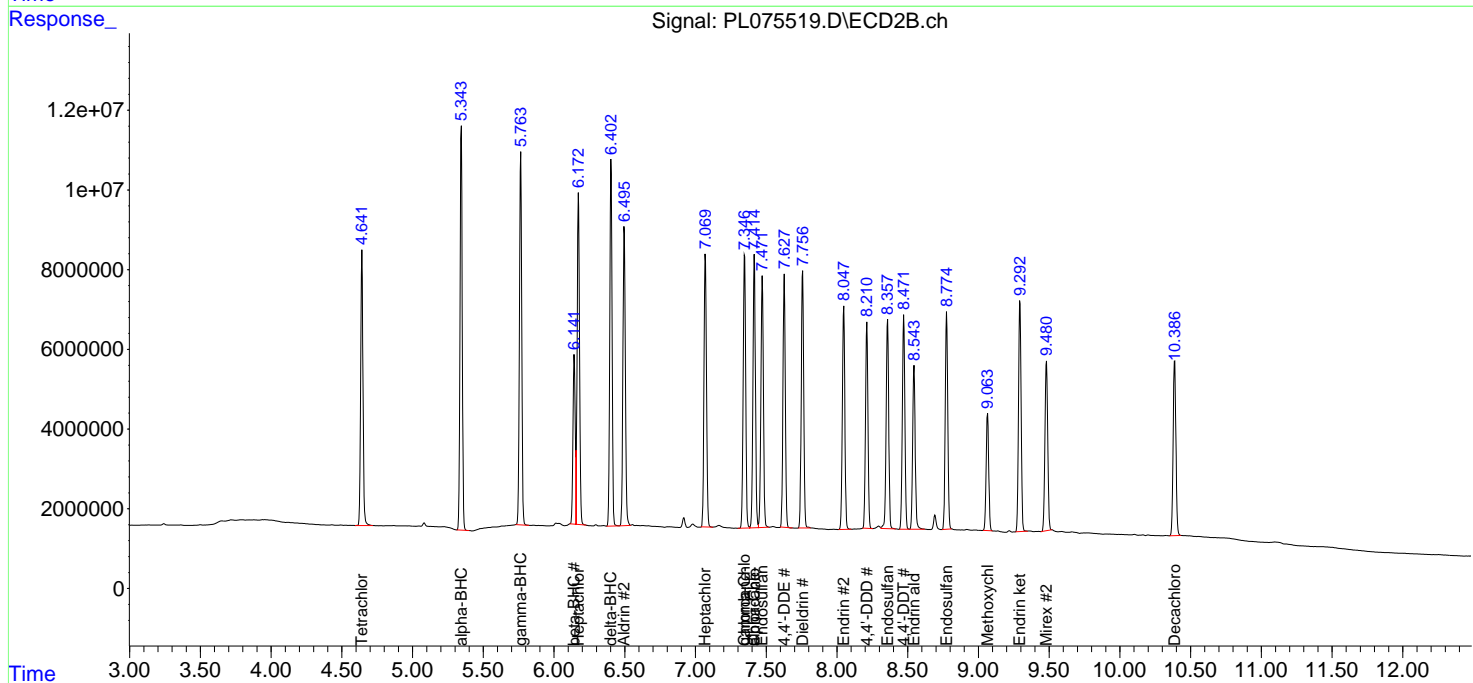
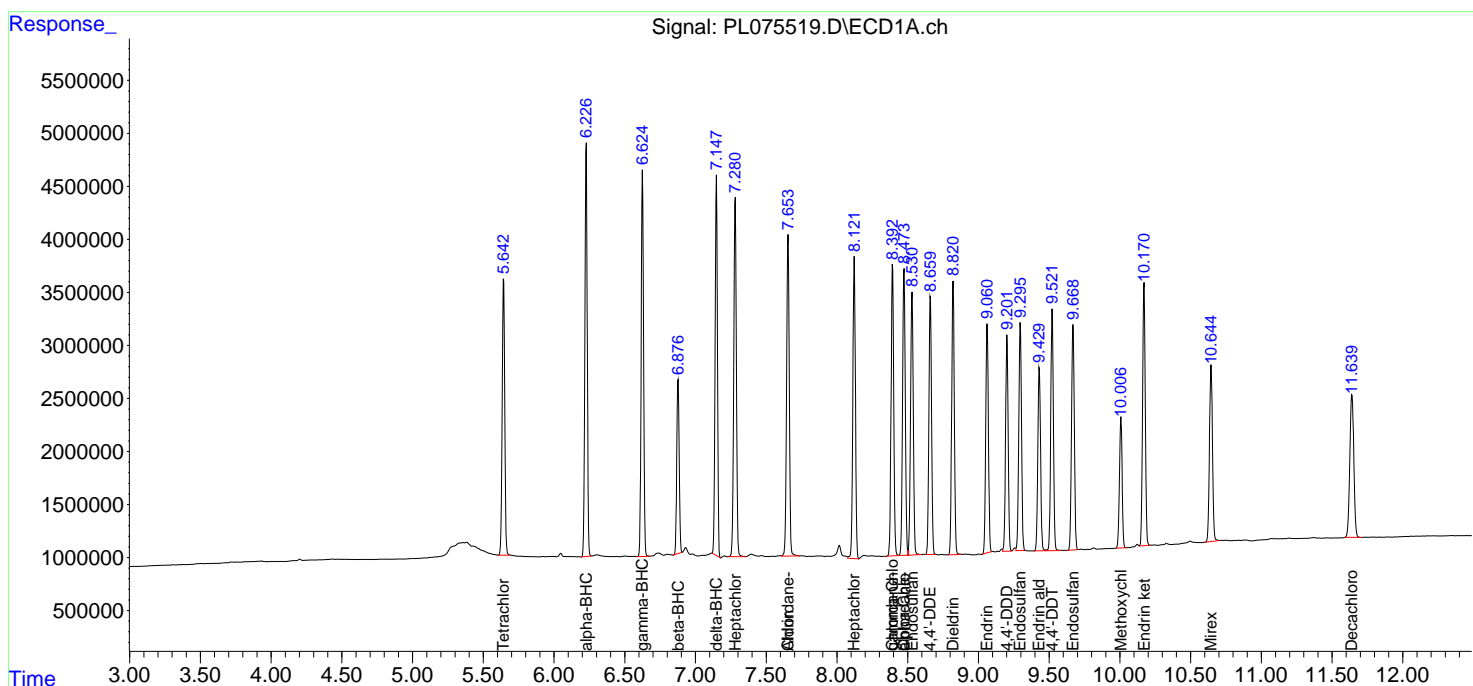
(f)=RT Delta > 1/2 Window (#)=Amounts differ by > 25% (m)=manual int.

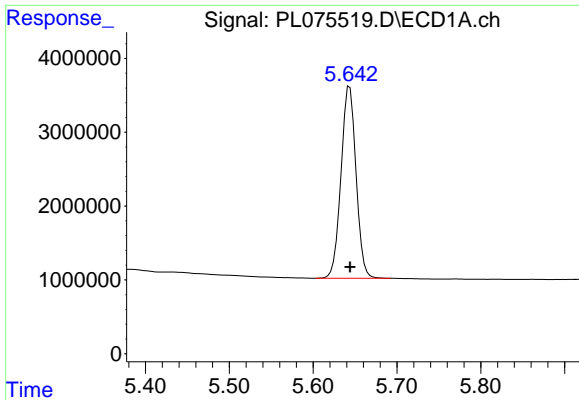
Data Path : Z:\pestpcbsrv\HPCHEM1\ECD_L\Data\PL060422\
 Data File : PL075519.D
 Signal(s) : Signal #1: ECD1A.ch Signal #2: ECD2B.ch
 Acq On : 04 Jun 2022 17:22
 Operator : AR\AJ
 Sample : PSTDICC050
 Misc :
 ALS Vial : 7 Sample Multiplier: 1

Instrument :
 ECD_L
 ClientSampleId :

Integration File signal 1: autoint1.e
 Integration File signal 2: autoint2.e
 Quant Time: Jun 06 03:11:05 2022
 Quant Method : Z:\pestpcbsrv\HPCHEM1\ECD_L\methods\PL060422.M
 Quant Title : GC Extractables
 QLast Update : Mon Jun 06 00:15:49 2022
 Response via : Initial Calibration
 Integrator: ChemStation

Volume Inj. : 1 µl
 Signal #1 Phase : ZB-MR2 Signal #2 Phase: ZB-MR1
 Signal #1 Info : 30M x 0.32mm x0.2 Signal #2 Info : 30M x 0.32mm x0.5µm

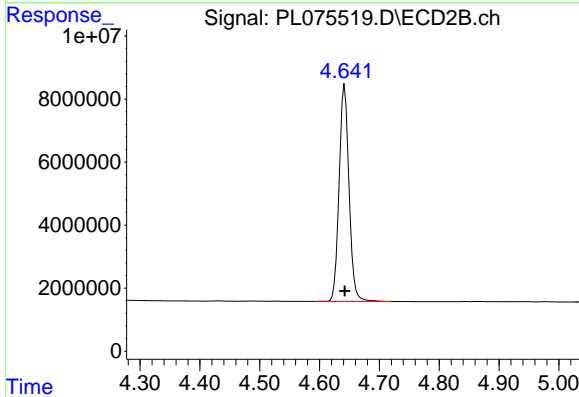




#1 Tetrachloro-m-xylene

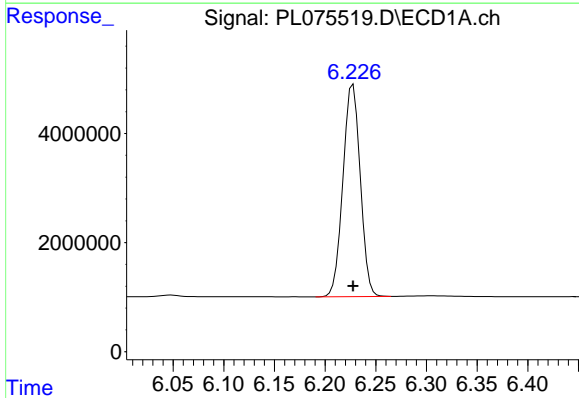
R.T.: 5.644 min
 Delta R.T.: 0.000 min
 Response: 32407691
 Conc: 52.51 ng/ml

Instrument :
 ECD_L
 ClientSampleId :



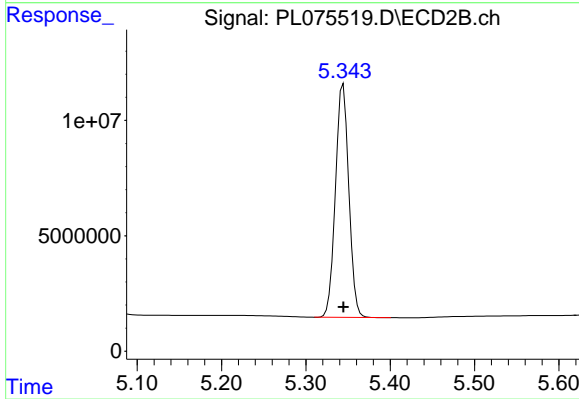
#1 Tetrachloro-m-xylene

R.T.: 4.642 min
 Delta R.T.: 0.000 min
 Response: 79339438
 Conc: 51.65 ng/ml



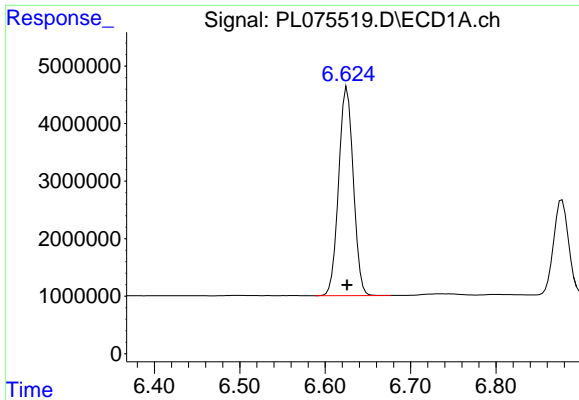
#2 alpha-BHC

R.T.: 6.228 min
 Delta R.T.: 0.000 min
 Response: 46210675
 Conc: 53.51 ng/ml



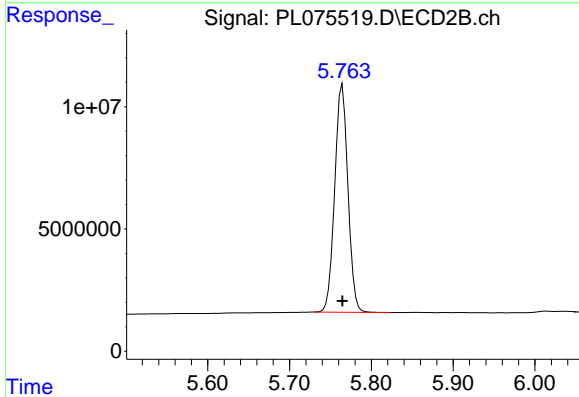
#2 alpha-BHC

R.T.: 5.344 min
 Delta R.T.: 0.000 min
 Response: 111285708
 Conc: 53.21 ng/ml

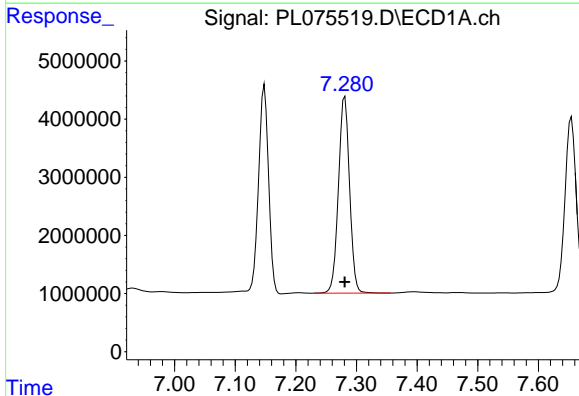


#3 gamma-BHC (Lindane)
 R.T.: 6.626 min
 Delta R.T.: 0.000 min
 Response: 43301571
 Conc: 53.23 ng/ml

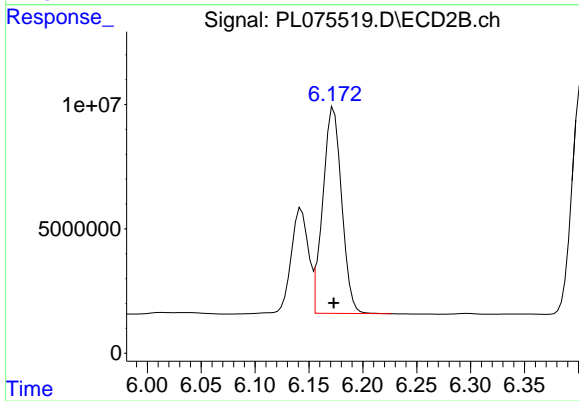
Instrument :
 ECD_L
 ClientSampleId :



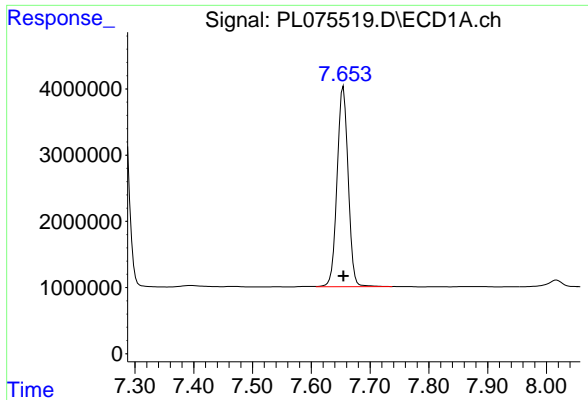
#3 gamma-BHC (Lindane)
 R.T.: 5.765 min
 Delta R.T.: 0.000 min
 Response: 104428325
 Conc: 52.33 ng/ml



#4 Heptachlor
 R.T.: 7.281 min
 Delta R.T.: 0.000 min
 Response: 43017218
 Conc: 51.91 ng/ml

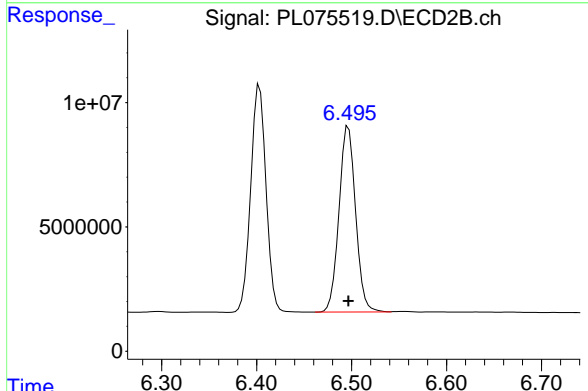


#4 Heptachlor
 R.T.: 6.173 min
 Delta R.T.: 0.000 min
 Response: 100551512
 Conc: 52.00 ng/ml

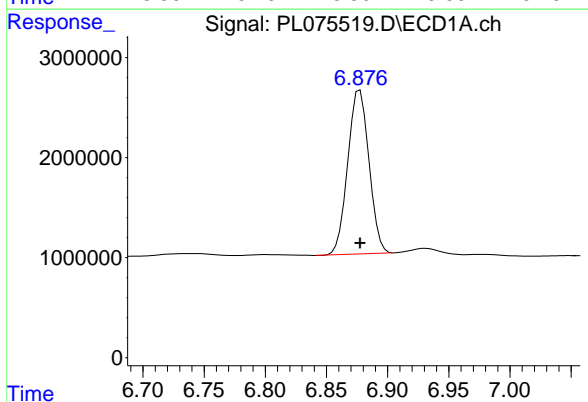


#5 Aldrin
 R.T.: 7.655 min
 Delta R.T.: 0.000 min
 Response: 39547040
 Conc: 51.92 ng/ml

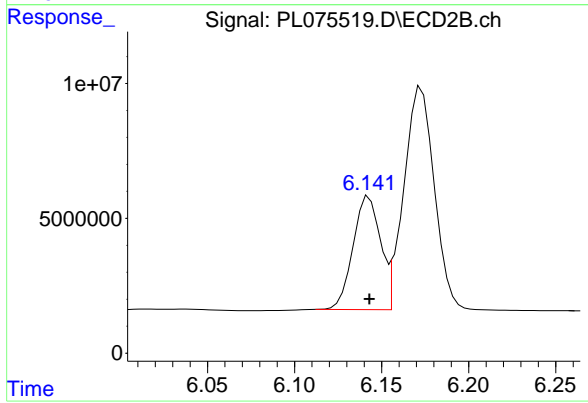
Instrument :
 ECD_L
 ClientSampleId :



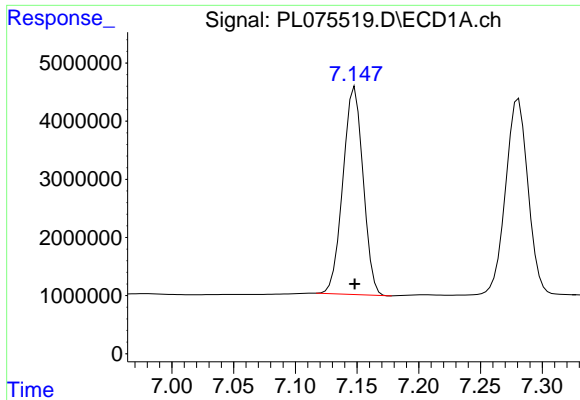
#5 Aldrin
 R.T.: 6.497 min
 Delta R.T.: 0.000 min
 Response: 91005560
 Conc: 52.11 ng/ml



#6 beta-BHC
 R.T.: 6.877 min
 Delta R.T.: 0.000 min
 Response: 19797894
 Conc: 53.05 ng/ml



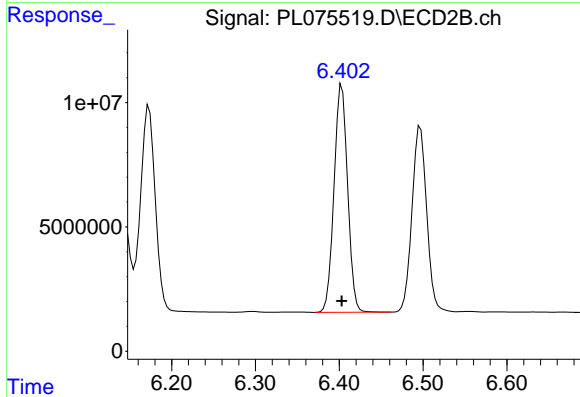
#6 beta-BHC
 R.T.: 6.143 min
 Delta R.T.: 0.000 min
 Response: 46151486
 Conc: 51.94 ng/ml



#7 delta-BHC

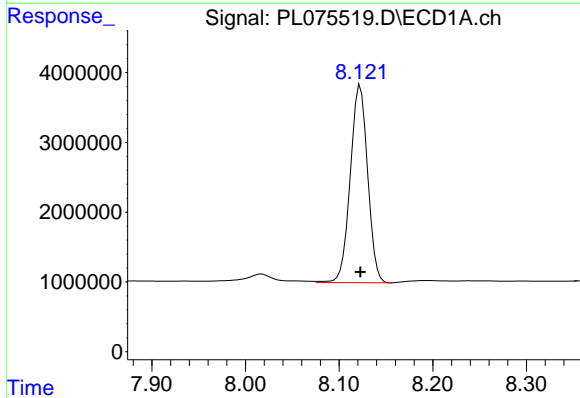
R.T.: 7.148 min
 Delta R.T.: 0.000 min
 Response: 40651696
 Conc: 53.67 ng/ml

Instrument :
 ECD_L
 ClientSampleId :



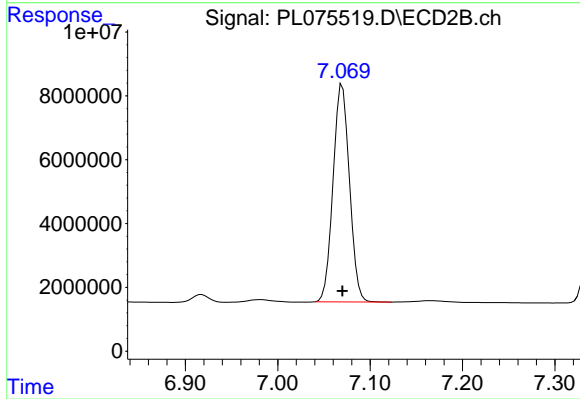
#7 delta-BHC

R.T.: 6.403 min
 Delta R.T.: 0.000 min
 Response: 102884160
 Conc: 52.21 ng/ml



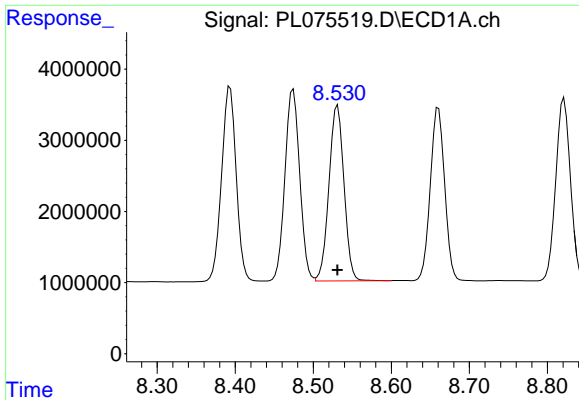
#8 Heptachlor epoxide

R.T.: 8.123 min
 Delta R.T.: 0.000 min
 Response: 36530015
 Conc: 51.61 ng/ml



#8 Heptachlor epoxide

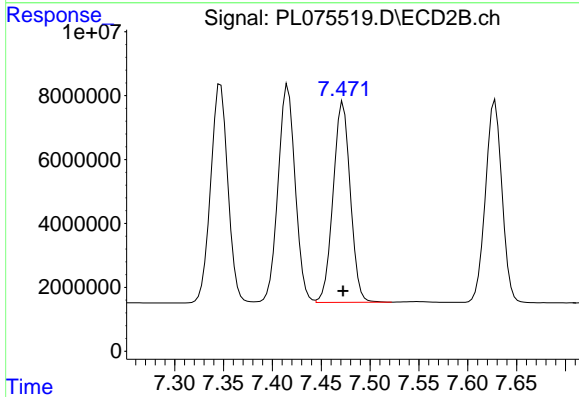
R.T.: 7.070 min
 Delta R.T.: 0.000 min
 Response: 84038887
 Conc: 51.33 ng/ml



#9 Endosulfan I

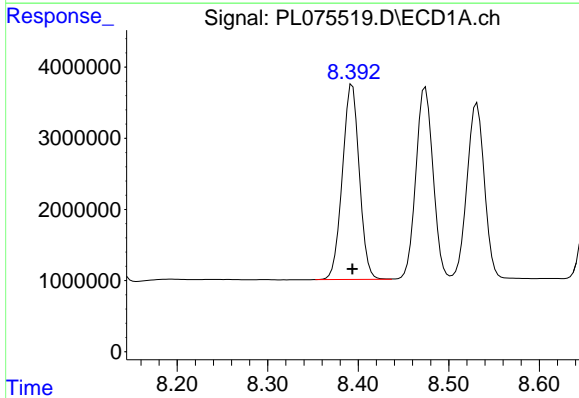
R.T.: 8.531 min
 Delta R.T.: 0.000 min
 Response: 33012482
 Conc: 52.36 ng/ml

Instrument :
 ECD_L
 ClientSampleId :



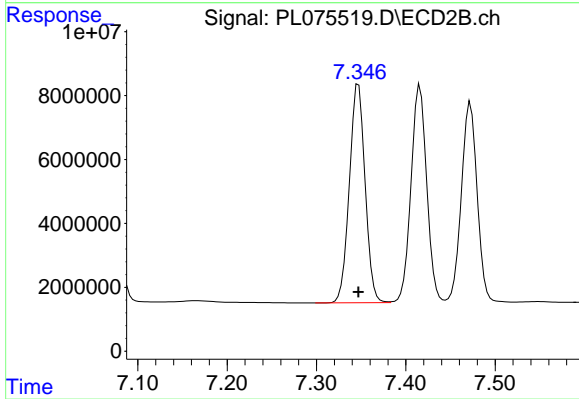
#9 Endosulfan I

R.T.: 7.472 min
 Delta R.T.: 0.000 min
 Response: 76861215
 Conc: 51.48 ng/ml



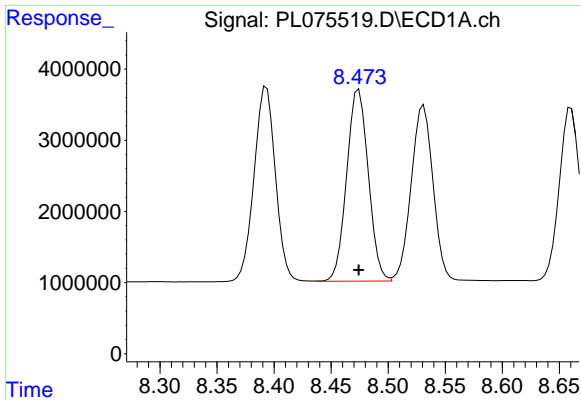
#10 gamma-Chlordane

R.T.: 8.393 min
 Delta R.T.: 0.000 min
 Response: 35692193
 Conc: 51.64 ng/ml



#10 gamma-Chlordane

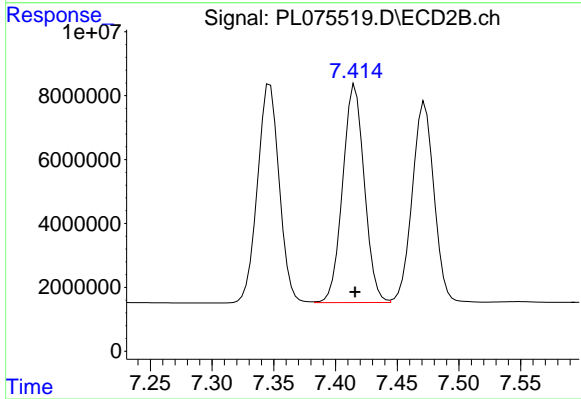
R.T.: 7.347 min
 Delta R.T.: 0.000 min
 Response: 83876299
 Conc: 51.37 ng/ml



#11 alpha-Chlordane

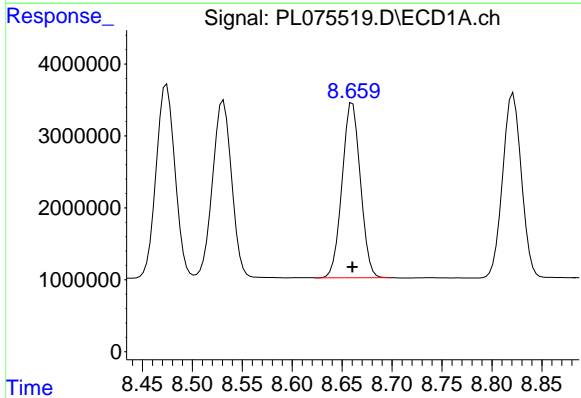
R.T.: 8.474 min
Delta R.T.: 0.000 min
Response: 35580968
Conc: 52.30 ng/ml

Instrument :
ECD_L
ClientSampleId :



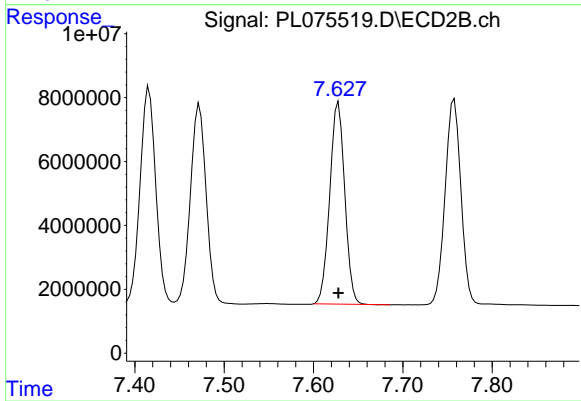
#11 alpha-Chlordane

R.T.: 7.416 min
Delta R.T.: 0.000 min
Response: 83249498
Conc: 51.11 ng/ml



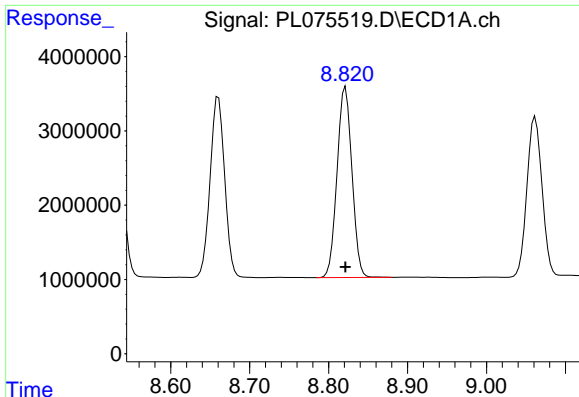
#12 4,4'-DDE

R.T.: 8.660 min
Delta R.T.: 0.000 min
Response: 31047792
Conc: 52.85 ng/ml



#12 4,4'-DDE

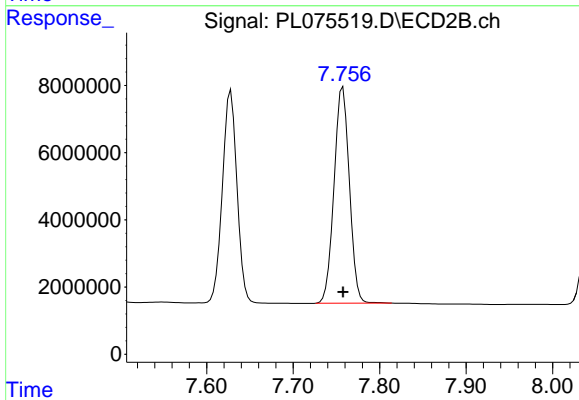
R.T.: 7.628 min
Delta R.T.: 0.000 min
Response: 73710912
Conc: 51.86 ng/ml



#13 Dieldrin

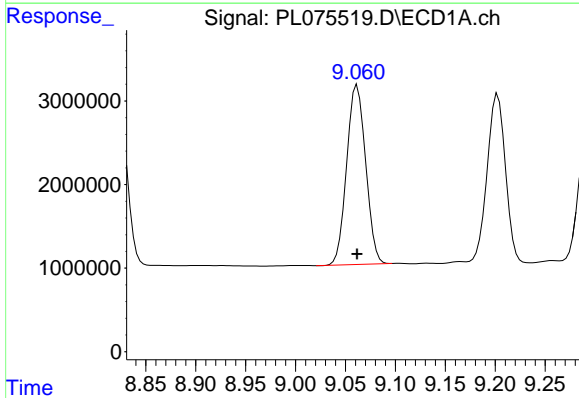
R.T.: 8.821 min
 Delta R.T.: 0.000 min
 Response: 33590340
 Conc: 52.38 ng/ml

Instrument :
 ECD_L
 ClientSampleId :



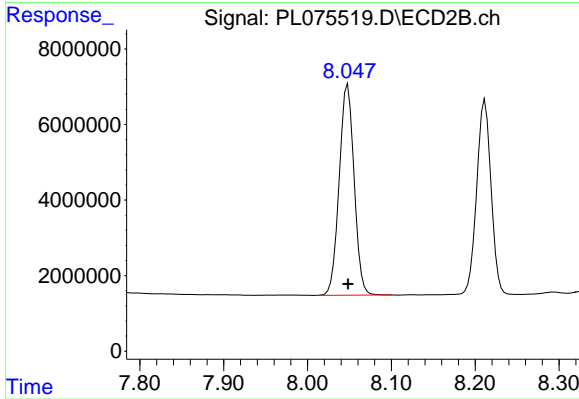
#13 Dieldrin

R.T.: 7.758 min
 Delta R.T.: 0.000 min
 Response: 78970110
 Conc: 51.66 ng/ml



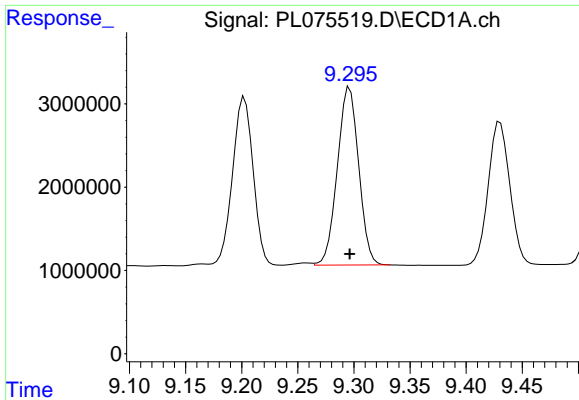
#14 Endrin

R.T.: 9.062 min
 Delta R.T.: 0.000 min
 Response: 28406504
 Conc: 52.43 ng/ml



#14 Endrin

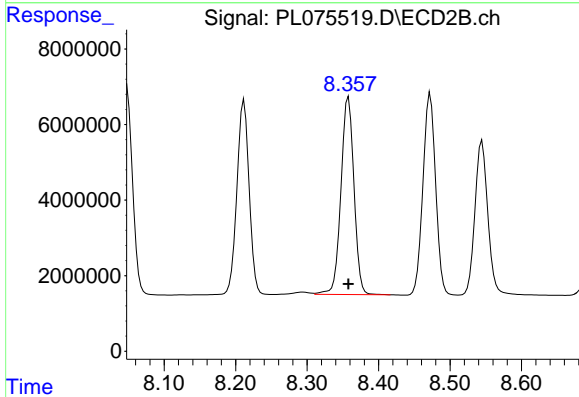
R.T.: 8.048 min
 Delta R.T.: 0.000 min
 Response: 68981014
 Conc: 51.02 ng/ml



#15 Endosulfan II

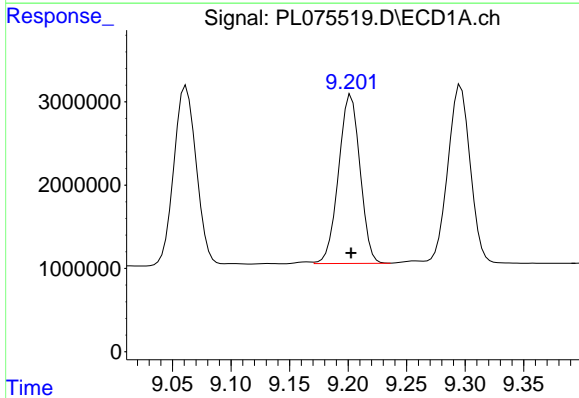
R.T.: 9.296 min
 Delta R.T.: 0.000 min
 Response: 28288247
 Conc: 51.08 ng/ml

Instrument :
 ECD_L
 ClientSampleId :



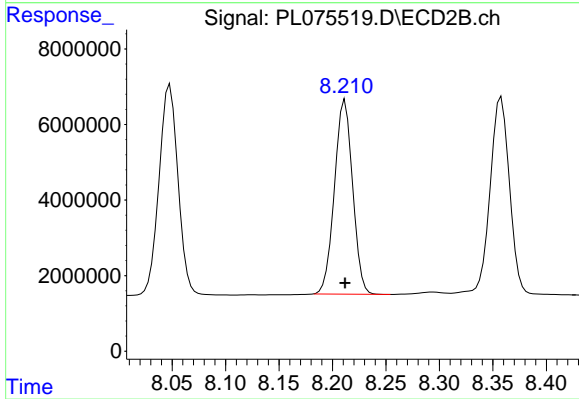
#15 Endosulfan II

R.T.: 8.358 min
 Delta R.T.: 0.000 min
 Response: 66163547
 Conc: 50.22 ng/ml



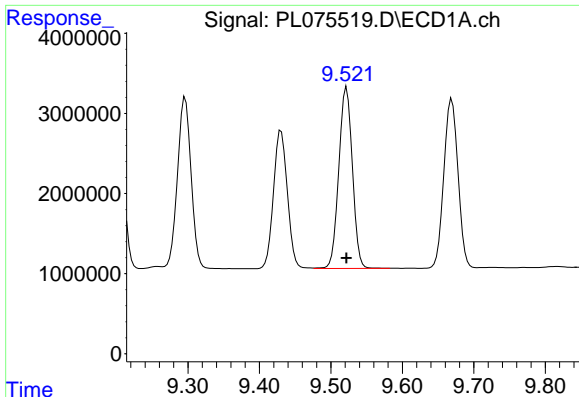
#16 4,4'-DDD

R.T.: 9.202 min
 Delta R.T.: 0.000 min
 Response: 25904123
 Conc: 52.01 ng/ml



#16 4,4'-DDD

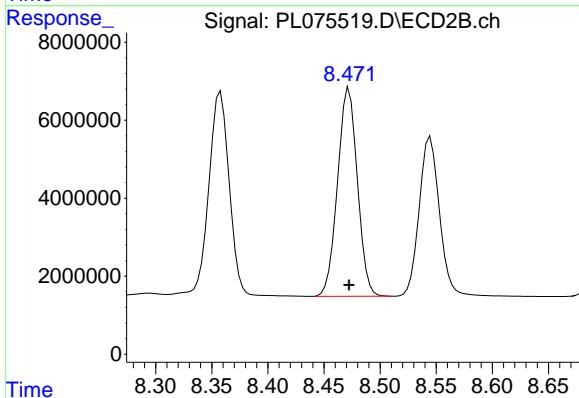
R.T.: 8.212 min
 Delta R.T.: 0.000 min
 Response: 60855467
 Conc: 51.42 ng/ml



#17 4,4'-DDT

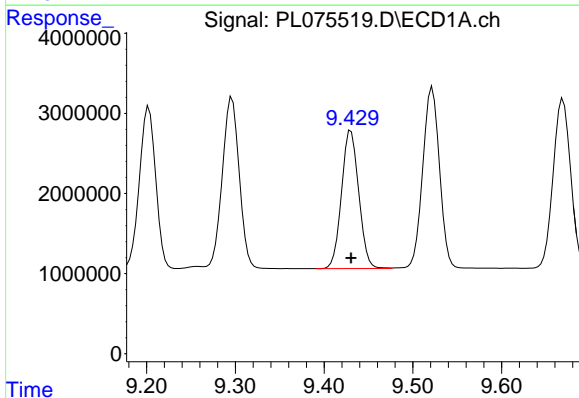
R.T.: 9.522 min
 Delta R.T.: 0.000 min
 Response: 29853818
 Conc: 52.55 ng/ml

Instrument :
 ECD_L
 ClientSampleId :



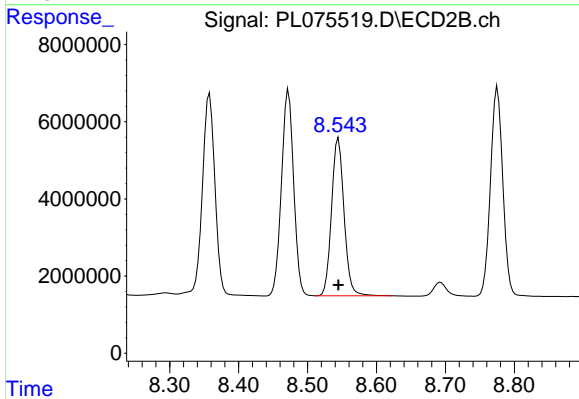
#17 4,4'-DDT

R.T.: 8.472 min
 Delta R.T.: 0.000 min
 Response: 65684888
 Conc: 51.35 ng/ml



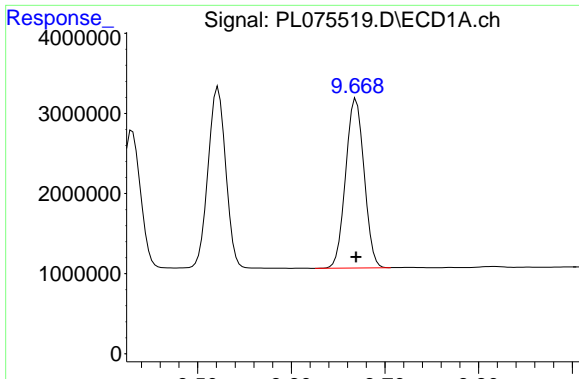
#18 Endrin aldehyde

R.T.: 9.430 min
 Delta R.T.: 0.000 min
 Response: 23243591
 Conc: 51.71 ng/ml



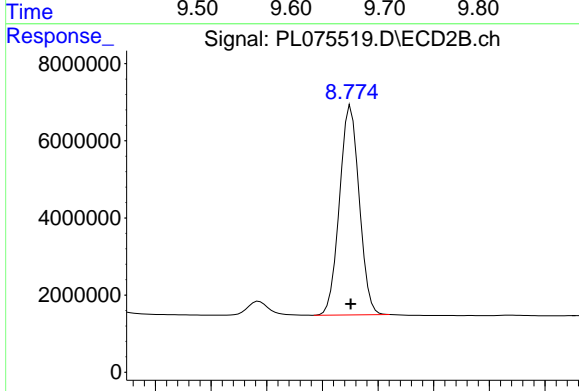
#18 Endrin aldehyde

R.T.: 8.545 min
 Delta R.T.: 0.000 min
 Response: 51456543
 Conc: 50.65 ng/ml

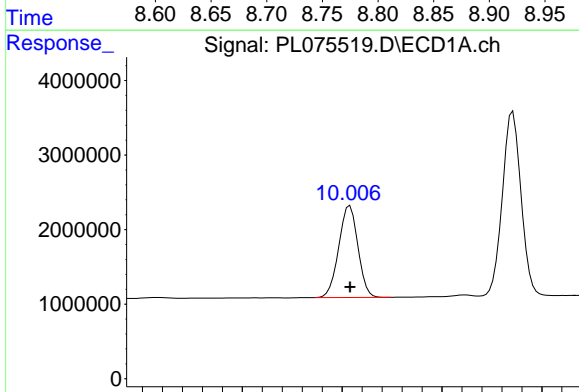


#19 Endosulfan Sulfate
 R.T.: 9.669 min
 Delta R.T.: 0.000 min
 Response: 28957758
 Conc: 51.52 ng/ml

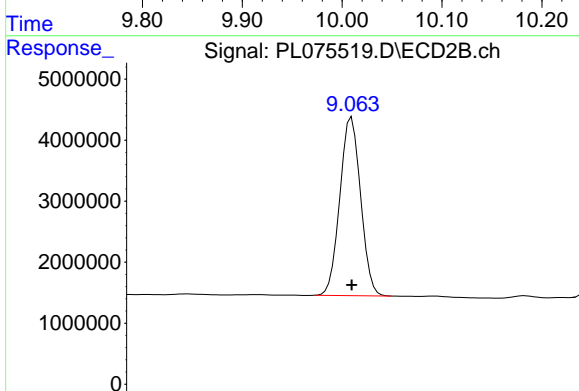
Instrument :
 ECD_L
 ClientSampleId :



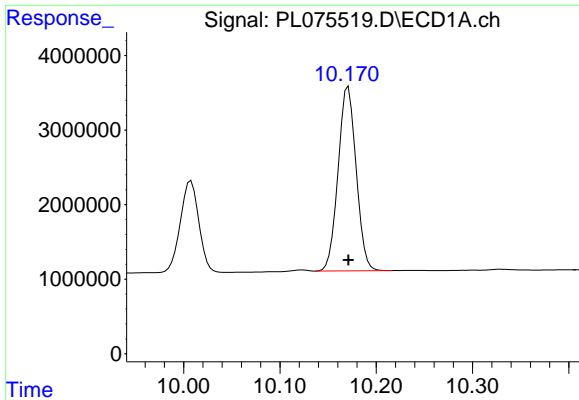
#19 Endosulfan Sulfate
 R.T.: 8.776 min
 Delta R.T.: 0.000 min
 Response: 66874654
 Conc: 50.92 ng/ml



#20 Methoxychlor
 R.T.: 10.008 min
 Delta R.T.: 0.000 min
 Response: 16432999
 Conc: 52.08 ng/ml



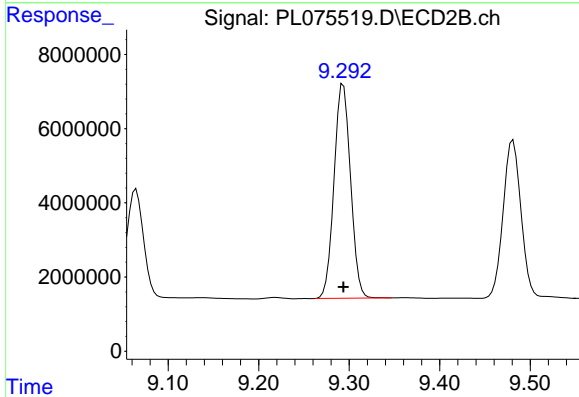
#20 Methoxychlor
 R.T.: 9.065 min
 Delta R.T.: 0.000 min
 Response: 37597229
 Conc: 50.71 ng/ml



#21 Endrin ketone

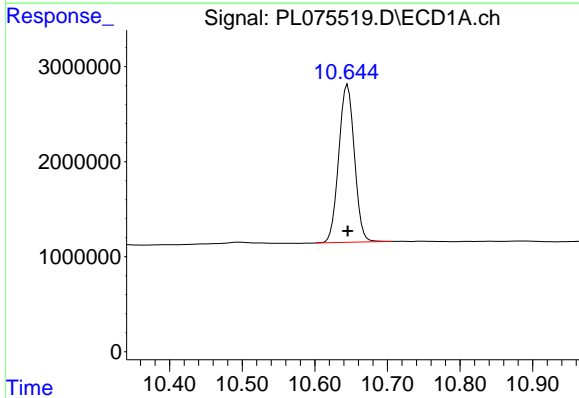
R.T.: 10.171 min
 Delta R.T.: 0.000 min
 Response: 32065036
 Conc: 51.66 ng/ml

Instrument :
 ECD_L
 ClientSampleId :



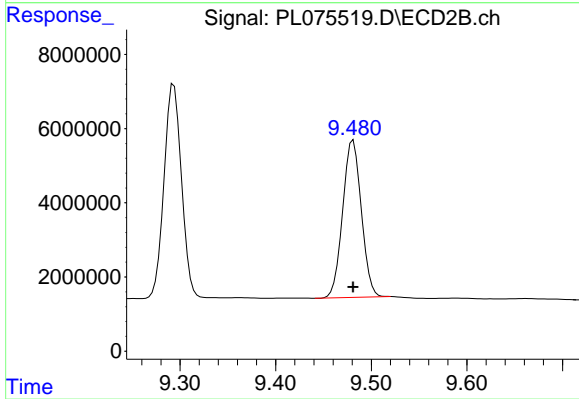
#21 Endrin ketone

R.T.: 9.294 min
 Delta R.T.: 0.000 min
 Response: 73052873
 Conc: 51.35 ng/ml



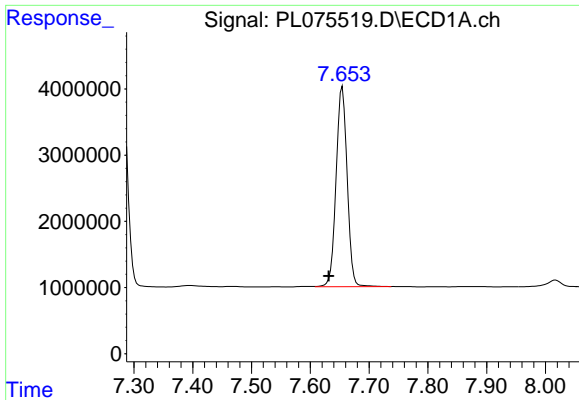
#22 Mirex

R.T.: 10.645 min
 Delta R.T.: 0.000 min
 Response: 24870265
 Conc: 51.27 ng/ml



#22 Mirex

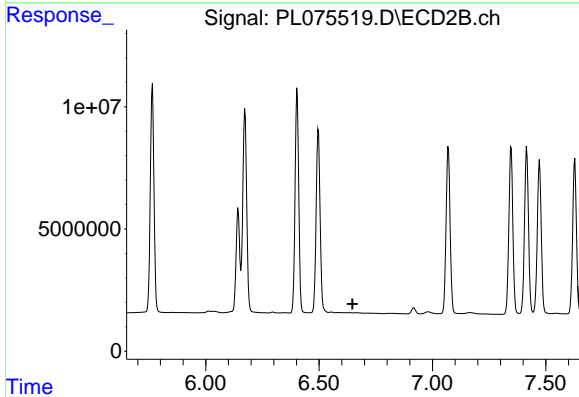
R.T.: 9.481 min
 Delta R.T.: 0.000 min
 Response: 57619810
 Conc: 50.28 ng/ml



#24 Chlordane-2

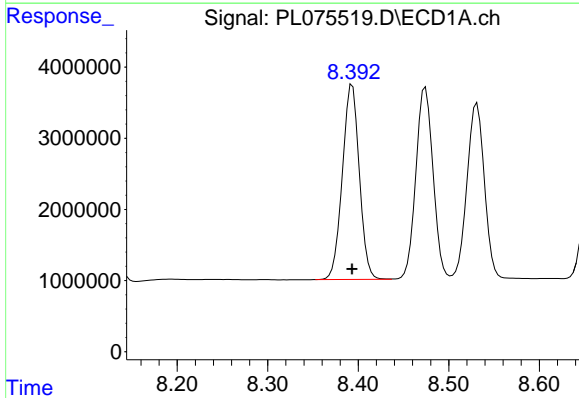
R.T.: 7.655 min
 Delta R.T.: 0.023 min
 Response: 39547040
 Conc: 1289.45 ng/m

Instrument :
 ECD_L
 ClientSampleId :



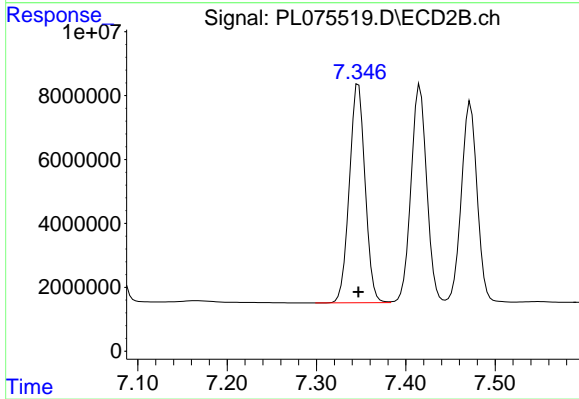
#24 Chlordane-2

R.T.: 0.000 min
 Exp R.T. : 6.648 min
 Response: 0
 Conc: N.D.



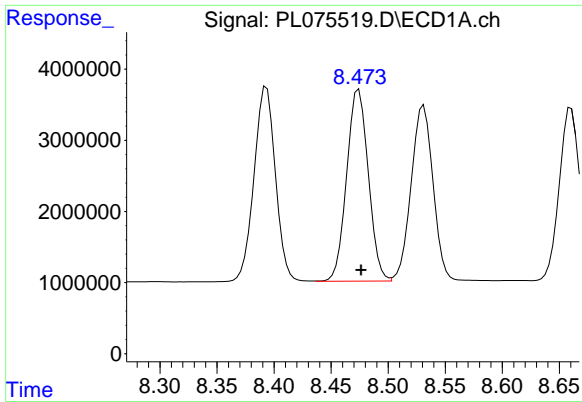
#25 Chlordane-3

R.T.: 8.393 min
 Delta R.T.: 0.000 min
 Response: 35692193
 Conc: 372.70 ng/ml



#25 Chlordane-3

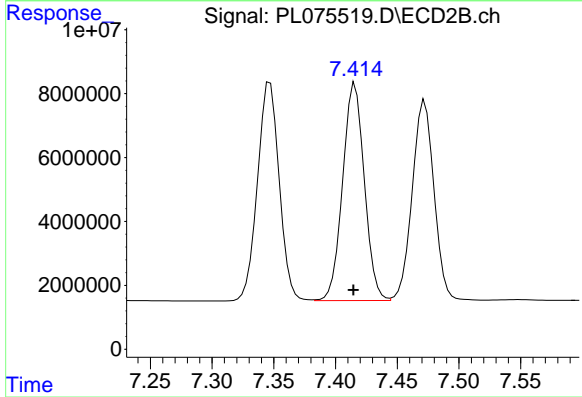
R.T.: 7.347 min
 Delta R.T.: 0.000 min
 Response: 83876299
 Conc: 524.51 ng/ml



#26 Chlordane-4

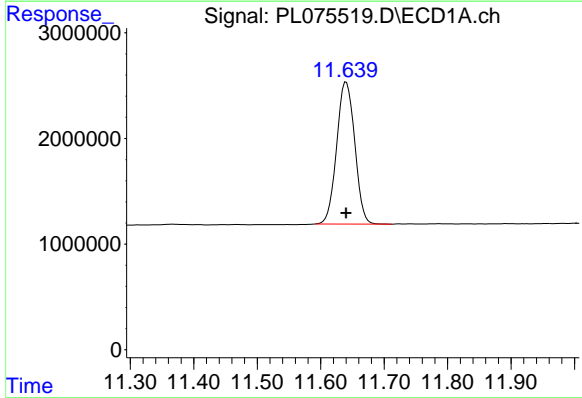
R.T.: 8.474 min
 Delta R.T.: -0.002 min
 Response: 35580968
 Conc: 307.78 ng/ml

Instrument :
 ECD_L
 ClientSampleId :



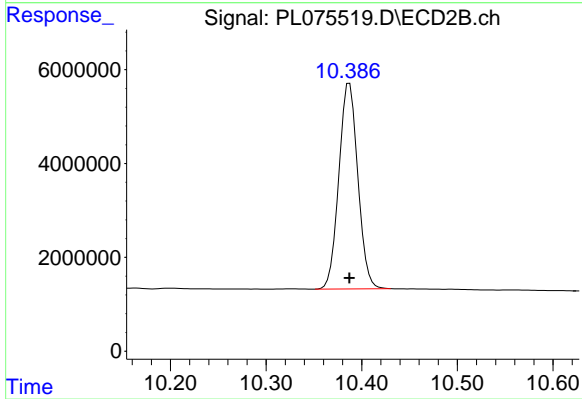
#26 Chlordane-4

R.T.: 7.416 min
 Delta R.T.: 0.001 min
 Response: 83249498
 Conc: 486.90 ng/ml



#28 Decachlorobiphenyl

R.T.: 11.640 min
 Delta R.T.: 0.000 min
 Response: 26620477
 Conc: 51.27 ng/ml



#28 Decachlorobiphenyl

R.T.: 10.387 min
 Delta R.T.: 0.000 min
 Response: 60611183
 Conc: 49.90 ng/ml