

Data Path : Z:\pestpcbsrv\HPCHEM1\ECD_L\Data\PL060521\
 Data File : PL067112.D
 Signal(s) : Signal #1: ECD1A.ch Signal #2: ECD2B.ch
 Acq On : 05 Jun 2021 16:56
 Operator : AR\AJ
 Sample : M2250-01
 Misc :
 ALS Vial : 23 Sample Multiplier: 1

Instrument :
 ECD_L
 ClientSampleId :
 MDL-WATER-QT3-2021-05

Integration File signal 1: autoint1.e
 Integration File signal 2: autoint2.e
 Quant Time: Jun 07 05:17:36 2021
 Quant Method : Z:\pestpcbsrv\HPCHEM1\ECD_L\methods\PL060521CLP.M
 Quant Title : GC Extractables
 QLast Update : Mon Jun 07 05:11:59 2021
 Response via : Initial Calibration
 Integrator: ChemStation

Volume Inj. : 1 µl
 Signal #1 Phase : ZB-MR2 Signal #2 Phase: ZB-MR1
 Signal #1 Info : 30M x 0.32mm x0.2 Signal #2 Info : 30M x 0.32mm x 0.50µm

Compound	RT#1	RT#2	Resp#1	Resp#2	ng/ml	ng/ml

System Monitoring Compounds						
1) SA Tetrachlo...	4.015	4.899	9549490	16643724	18.327	18.922
27) SA Decachlor...	9.233	10.436	23344777	34585708	36.932	38.061
Target Compounds						
2) A alpha-BHC	4.612f	0.000	5629901	0	7.082	N.D. #
3) MA gamma-BHC...	4.931	0.000	361507	0	0.504	N.D. #
4) MA Heptachlor	0.000	6.335	0	960966	N.D.	0.876
6) B beta-BHC	5.218	5.978f	364117	10417419	1.015	14.452 #
7) B delta-BHC	5.431f	6.161f	256205	2239371	0.381	2.482 #
8) B Heptachlo...	6.064	0.000	245560	0	0.389	N.D. #
10) B trans-Chl...	6.343	0.000	293313	0	0.448	N.D. #
11) B cis-Chlor...	6.343f	0.000	293313	0	0.445	N.D. #
12) B 4,4'-DDE	6.552	0.000	279562	0	0.461	N.D. #
14) MA Endrin	6.983	0.000	453005	0	0.747	N.D. #
15) B Endosulfa...	7.227	8.234	393160	-55209	0.709	N.D. #
16) A 4,4'-DDD	7.169f	0.000	604211	0	1.145	N.D. #
17) MA 4,4'-DDT	7.340	8.450	216609	830177	0.402	1.192 #
18) B Endrin al...	7.449	8.371f	358218	-122623	0.730	N.D. #
19) B Endosulfa...	7.690f	0.000	569723	0	1.020	N.D. #
20) A Methoxychlor	7.912	0.000	359014	0	1.150	N.D. #
21) B Endrin ke...	8.085f	0.000	588386	0	0.903	N.D. #
23) Toxaphene-2	6.824	0.000	421581	0	116.028	N.D. #
24) Toxaphene-3	7.290	8.371	990972	-122623	93.649	N.D. #
25) Toxaphene-4	7.545	8.450	1148770	830177	103.504	66.104 #
26) Toxaphene-5	8.043	8.972	1295003	950922	106.727	96.340

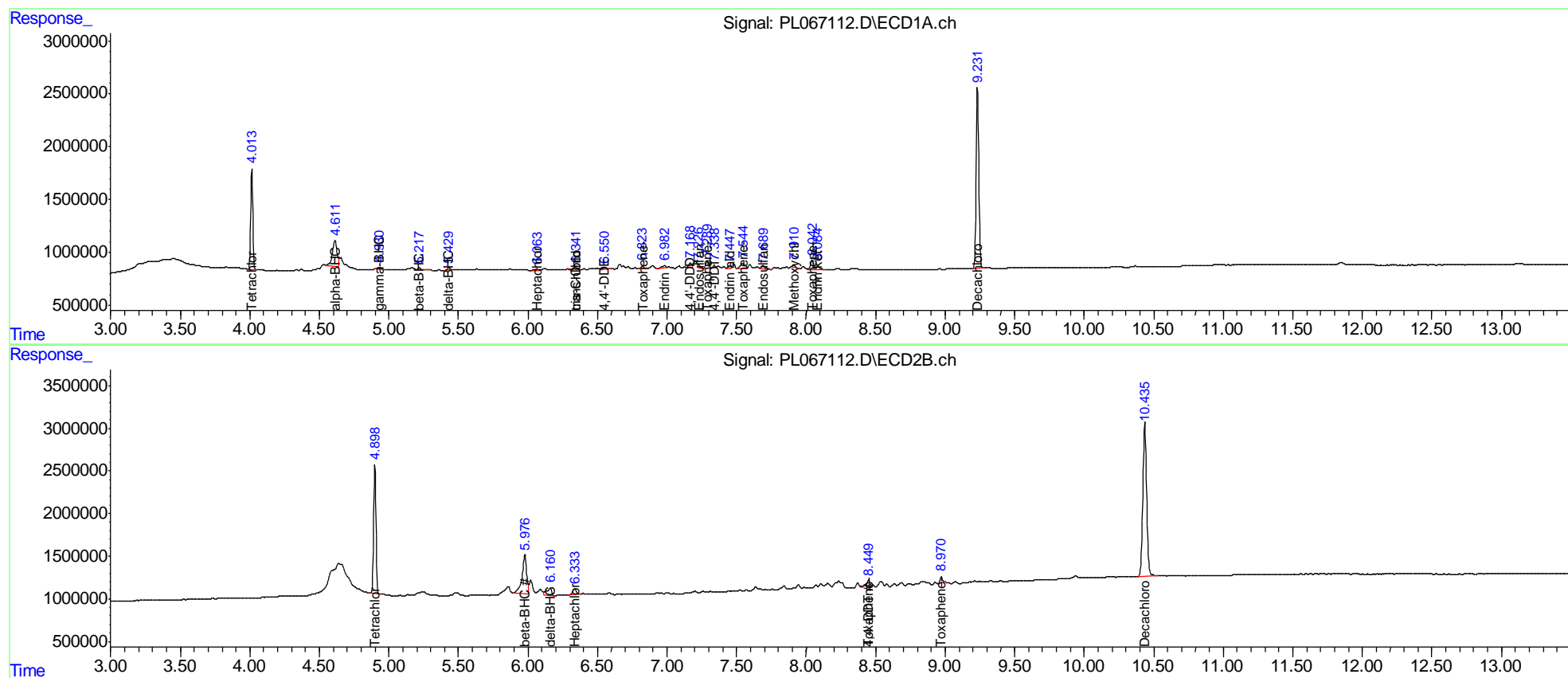
(f)=RT Delta > 1/2 Window (#)=Amounts differ by > 25% (m)=manual int.

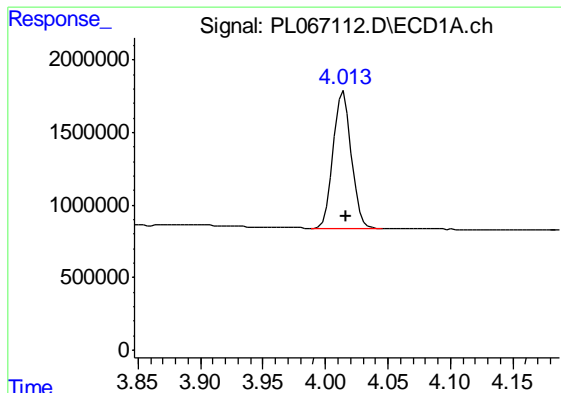
Data Path : Z:\pestpcbsrv\HPCHEM1\ECD_L\Data\PL060521\
 Data File : PL067112.D
 Signal(s) : Signal #1: ECD1A.ch Signal #2: ECD2B.ch
 Acq On : 05 Jun 2021 16:56
 Operator : AR\AJ
 Sample : M2250-01
 Misc :
 ALS Vial : 23 Sample Multiplier: 1

Instrument :
 ECD_L
 Client Sampled :
 MDL-WATER-QT3-2021-05

Integration File signal 1: autoint1.e
 Integration File signal 2: autoint2.e
 Quant Time: Jun 07 05:17:36 2021
 Quant Method : Z:\pestpcbsrv\HPCHEM1\ECD_L\methods\PL060521CLP.M
 Quant Title : GC Extractables
 QLast Update : Mon Jun 07 05:11:59 2021
 Response via : Initial Calibration
 Integrator: ChemStation

Volume Inj. : 1 µl
 Signal #1 Phase : ZB-MR2 Signal #2 Phase: ZB-MR1
 Signal #1 Info : 30M x 0.32mm x0.2 Signal #2 Info : 30M x 0.32mm x 0.50µm

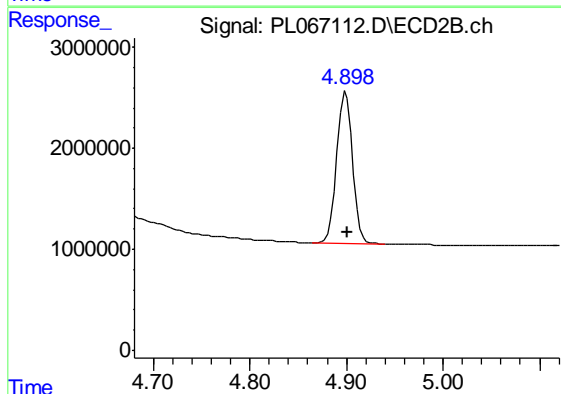




#1 Tetrachloro-m-xylene

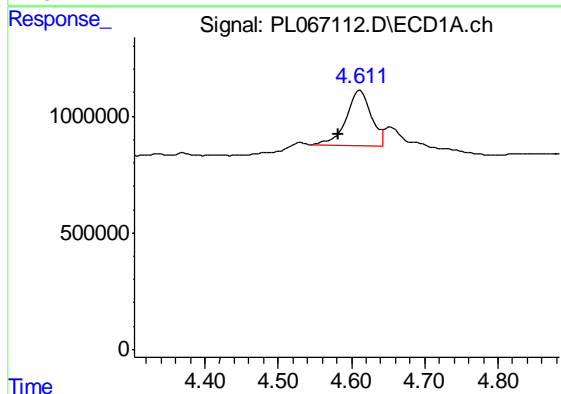
R.T.: 4.015 min
 Delta R.T.: -0.002 min
 Response: 9549490
 Conc: 18.33 ng/ml

Instrument :
 ECD_L
 ClientSampleId :
 MDL-WATER-QT3-2021-05



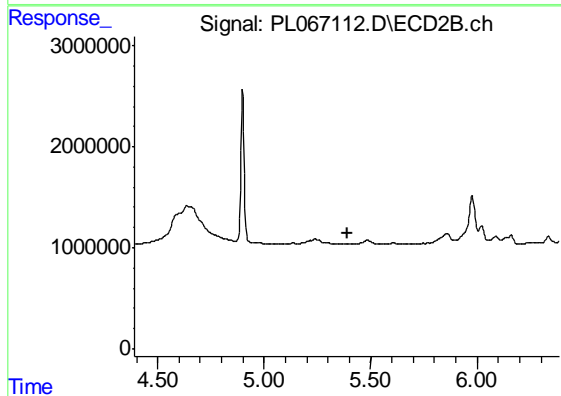
#1 Tetrachloro-m-xylene

R.T.: 4.899 min
 Delta R.T.: -0.001 min
 Response: 16643724
 Conc: 18.92 ng/ml



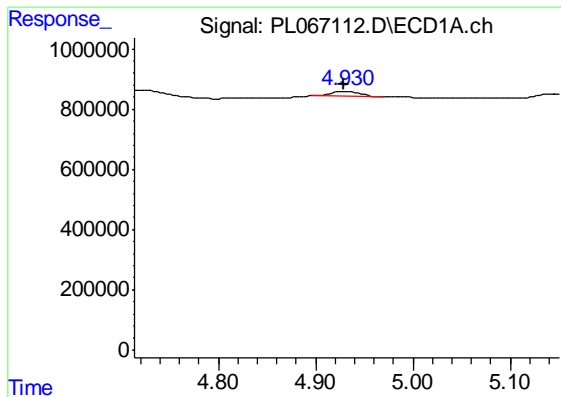
#2 alpha-BHC

R.T.: 4.612 min
 Delta R.T.: 0.029 min
 Response: 5629901
 Conc: 7.08 ng/ml



#2 alpha-BHC

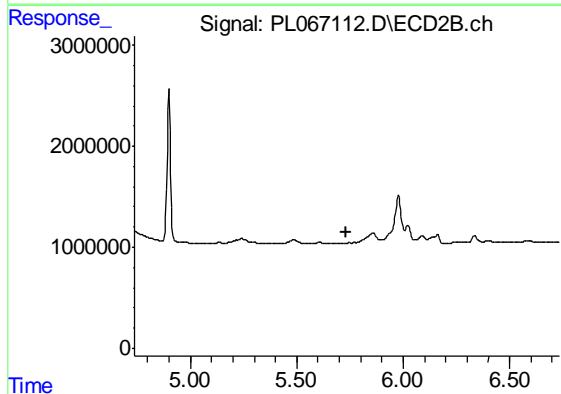
R.T.: 0.000 min
 Exp R.T. : 5.390 min
 Response: 0
 Conc: N.D.



#3 gamma-BHC (Lindane)

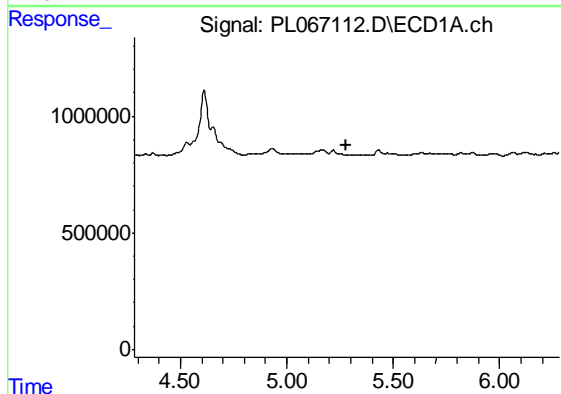
R.T.: 4.931 min
 Delta R.T.: 0.002 min
 Response: 361507
 Conc: 0.50 ng/ml

Instrument :
 ECD_L
 ClientSampleId :
 MDL-WATER-QT3-2021-05



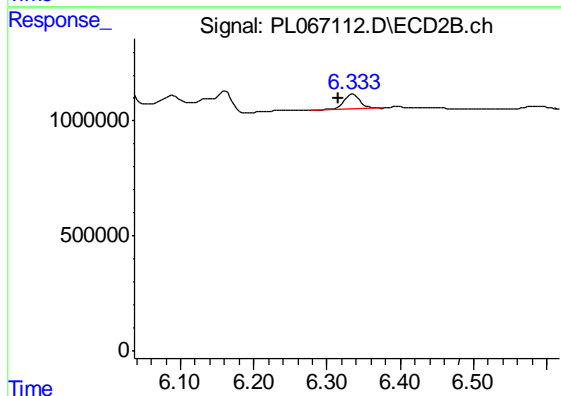
#3 gamma-BHC (Lindane)

R.T.: 0.000 min
 Exp R.T. : 5.734 min
 Response: 0
 Conc: N.D.



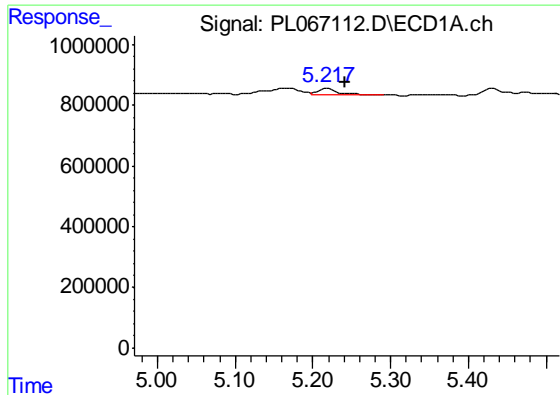
#4 Heptachlor

R.T.: 0.000 min
 Exp R.T. : 5.281 min
 Response: 0
 Conc: N.D.



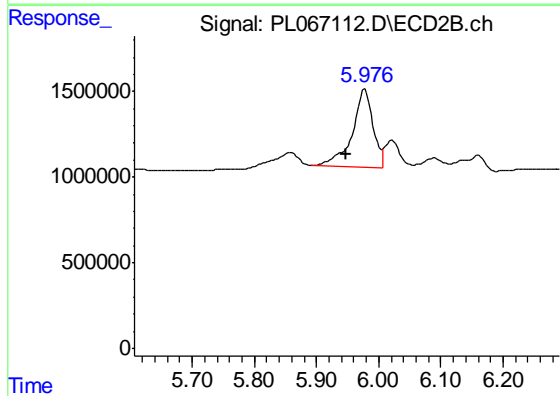
#4 Heptachlor

R.T.: 6.335 min
 Delta R.T.: 0.019 min
 Response: 960966
 Conc: 0.88 ng/ml

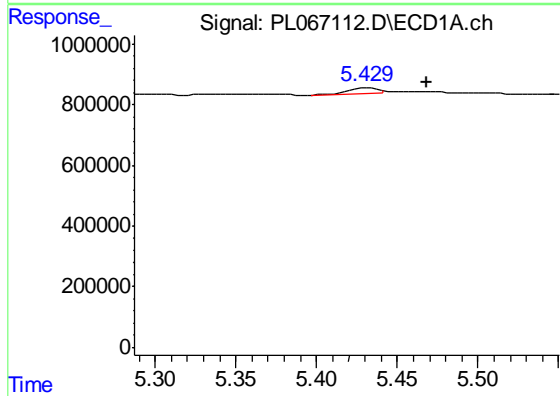


#6 beta-BHC
 R.T.: 5.218 min
 Delta R.T.: -0.023 min
 Response: 364117
 Conc: 1.02 ng/ml

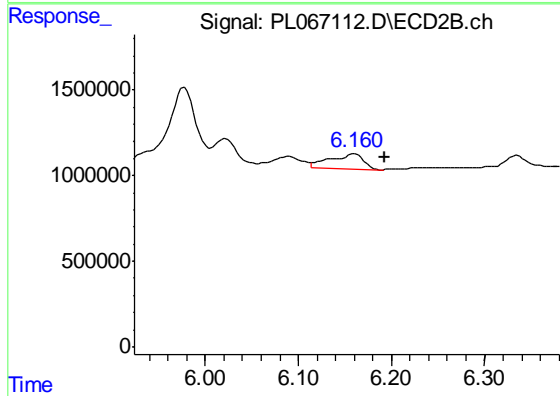
Instrument :
 ECD_L
ClientSampleId :
 MDL-WATER-QT3-2021-05



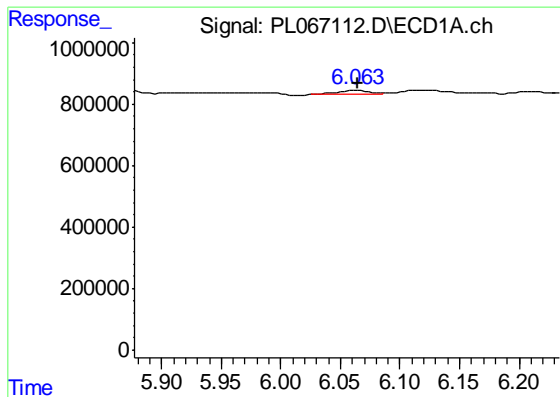
#6 beta-BHC
 R.T.: 5.978 min
 Delta R.T.: 0.029 min
 Response: 10417419
 Conc: 14.45 ng/ml



#7 delta-BHC
 R.T.: 5.431 min
 Delta R.T.: -0.038 min
 Response: 256205
 Conc: 0.38 ng/ml

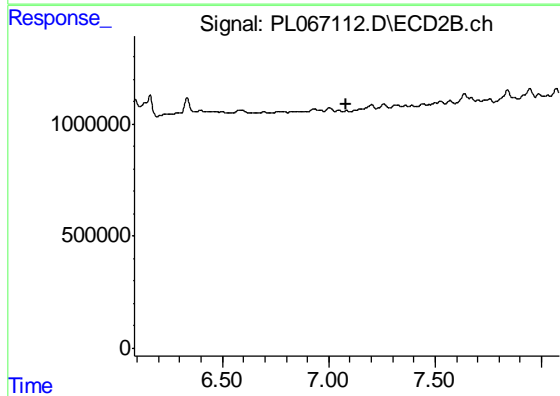


#7 delta-BHC
 R.T.: 6.161 min
 Delta R.T.: -0.032 min
 Response: 2239371
 Conc: 2.48 ng/ml

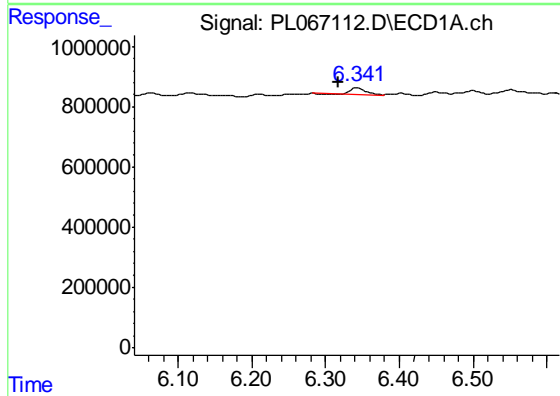


#8 Heptachlor epoxide
 R.T.: 6.064 min
 Delta R.T.: 0.000 min
 Response: 245560
 Conc: 0.39 ng/ml

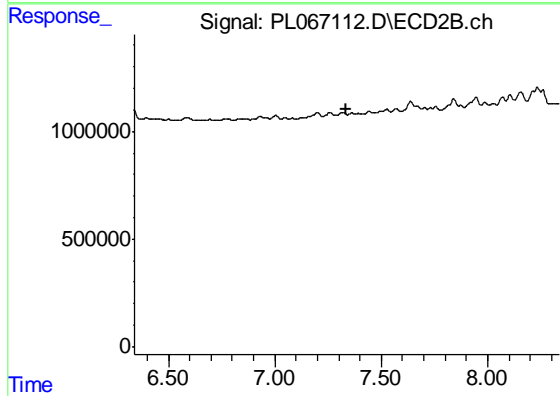
Instrument :
 ECD_L
ClientSampleId :
 MDL-WATER-QT3-2021-05



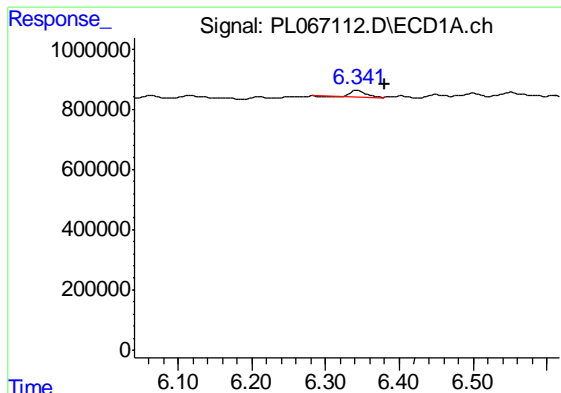
#8 Heptachlor epoxide
 R.T.: 0.000 min
 Exp R.T. : 7.085 min
 Response: 0
 Conc: N.D.



#10 trans-Chlordane
 R.T.: 6.343 min
 Delta R.T.: 0.026 min
 Response: 293313
 Conc: 0.45 ng/ml



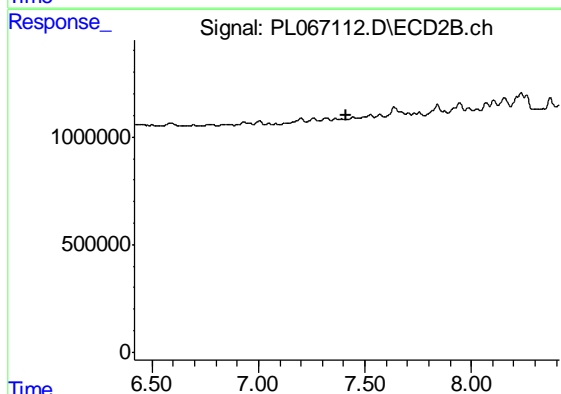
#10 trans-Chlordane
 R.T.: 0.000 min
 Exp R.T. : 7.338 min
 Response: 0
 Conc: N.D.



#11 cis-Chlordane

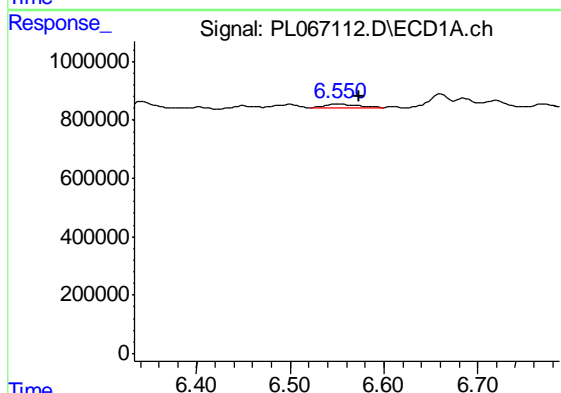
R.T.: 6.343 min
 Delta R.T.: -0.037 min
 Response: 293313
 Conc: 0.44 ng/ml

Instrument :
 ECD_L
 ClientSampleId :
 MDL-WATER-QT3-2021-05



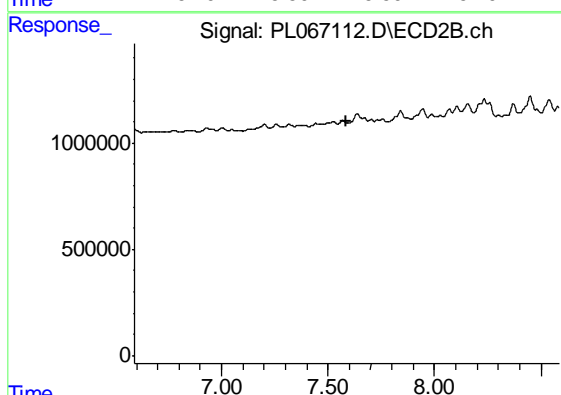
#11 cis-Chlordane

R.T.: 0.000 min
 Exp R.T. : 7.415 min
 Response: 0
 Conc: N.D.



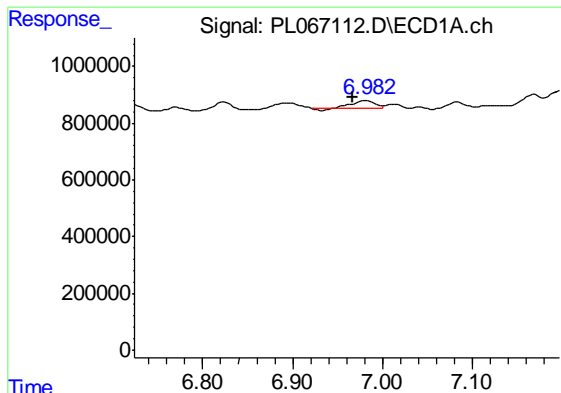
#12 4,4'-DDE

R.T.: 6.552 min
 Delta R.T.: -0.021 min
 Response: 279562
 Conc: 0.46 ng/ml



#12 4,4'-DDE

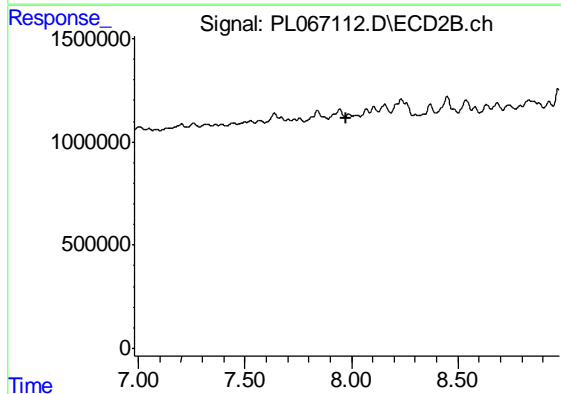
R.T.: 0.000 min
 Exp R.T. : 7.588 min
 Response: 0
 Conc: N.D.



#14 Endrin

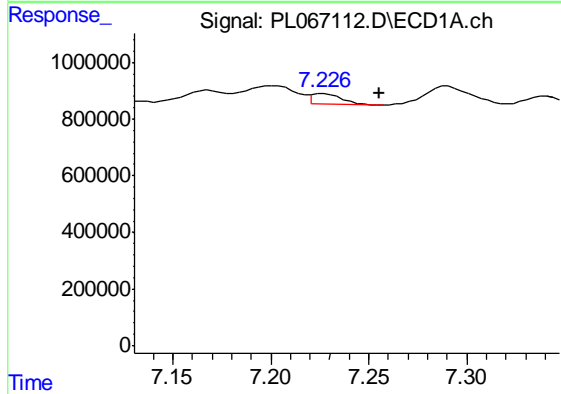
R.T.: 6.983 min
 Delta R.T.: 0.017 min
 Response: 453005
 Conc: 0.75 ng/ml

Instrument :
 ECD_L
 ClientSampleId :
 MDL-WATER-QT3-2021-05



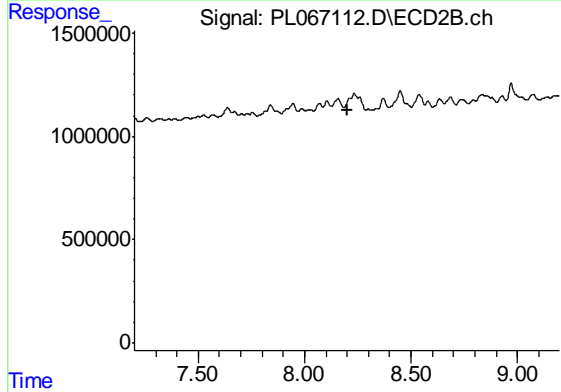
#14 Endrin

R.T.: 0.000 min
 Exp R.T. : 7.978 min
 Response: 0
 Conc: N.D.



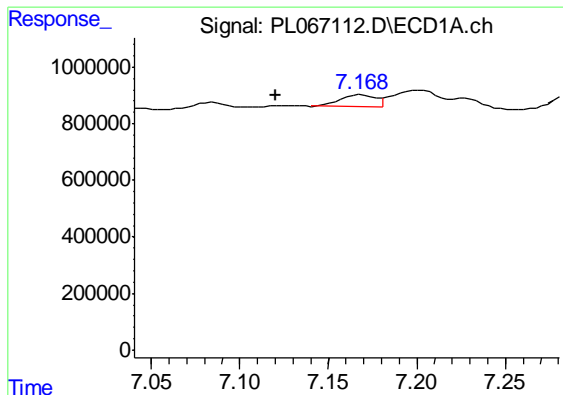
#15 Endosulfan II

R.T.: 7.227 min
 Delta R.T.: -0.028 min
 Response: 393160
 Conc: 0.71 ng/ml



#15 Endosulfan II

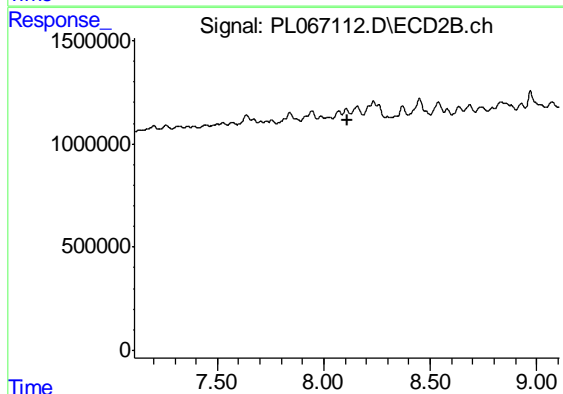
R.T.: 8.234 min
 Delta R.T.: 0.035 min
 Response: -55209
 Conc: N.D.



#16 4,4'-DDD

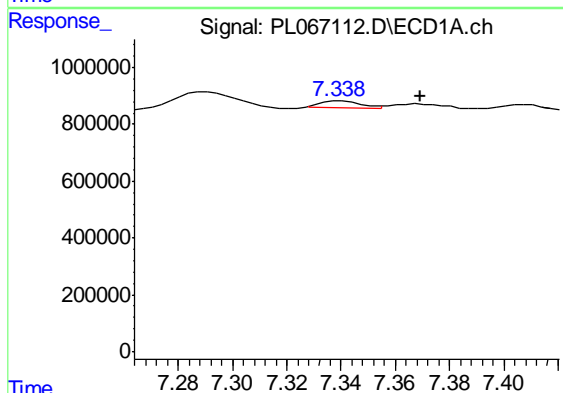
R.T.: 7.169 min
 Delta R.T.: 0.048 min
 Response: 604211
 Conc: 1.14 ng/ml

Instrument :
 ECD_L
 ClientSampleId :
 MDL-WATER-QT3-2021-05



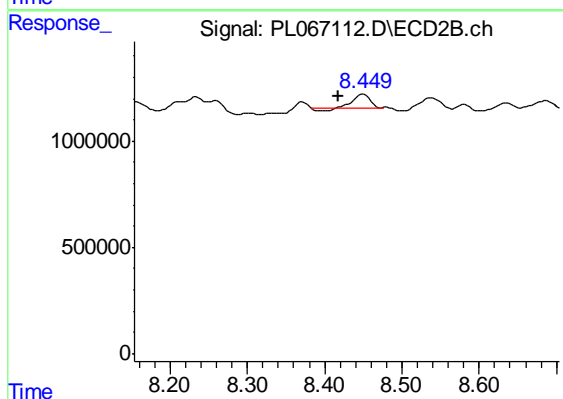
#16 4,4'-DDD

R.T.: 0.000 min
 Exp R.T. : 8.110 min
 Response: 0
 Conc: N.D.



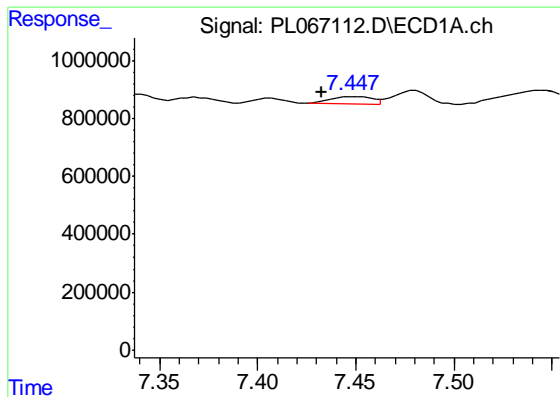
#17 4,4'-DDT

R.T.: 7.340 min
 Delta R.T.: -0.030 min
 Response: 216609
 Conc: 0.40 ng/ml



#17 4,4'-DDT

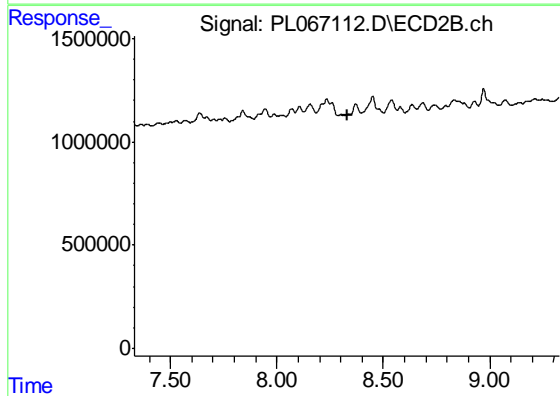
R.T.: 8.450 min
 Delta R.T.: 0.032 min
 Response: 830177
 Conc: 1.19 ng/ml



#18 Endrin aldehyde

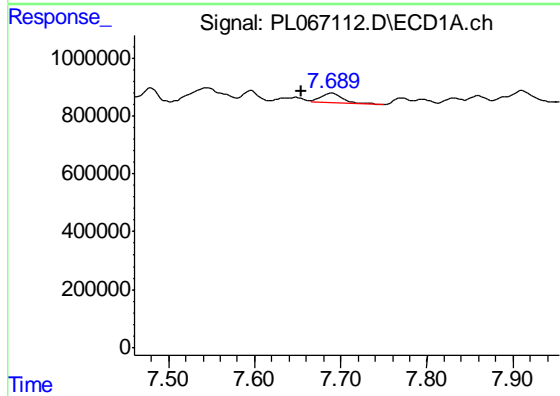
R.T.: 7.449 min
 Delta R.T.: 0.016 min
 Response: 358218
 Conc: 0.73 ng/ml

Instrument :
 ECD_L
 ClientSampleId :
 MDL-WATER-QT3-2021-05



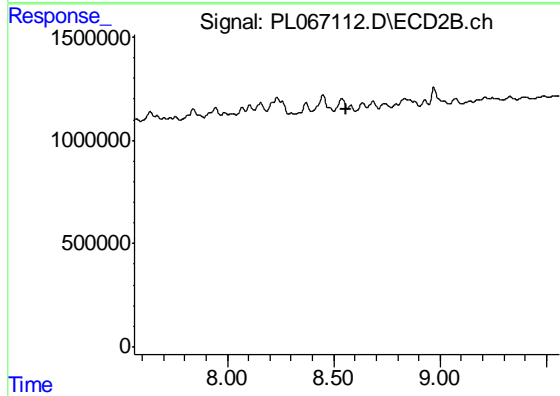
#18 Endrin aldehyde

R.T.: 8.371 min
 Delta R.T.: 0.041 min
 Response: -122623
 Conc: N.D.



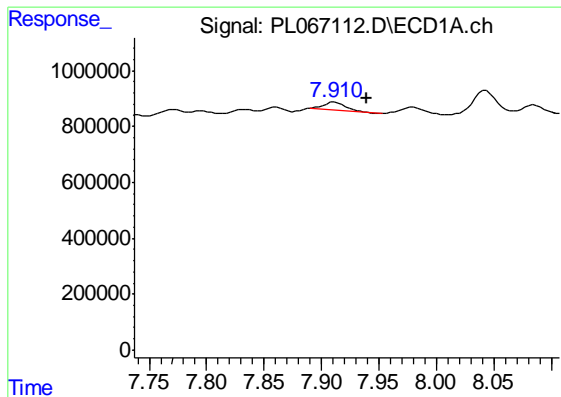
#19 Endosulfan Sulfate

R.T.: 7.690 min
 Delta R.T.: 0.036 min
 Response: 569723
 Conc: 1.02 ng/ml



#19 Endosulfan Sulfate

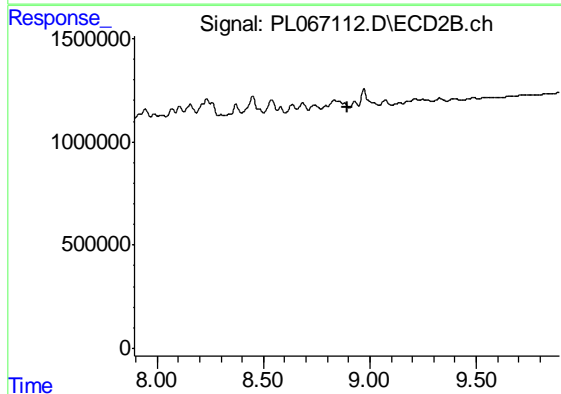
R.T.: 0.000 min
 Exp R.T. : 8.561 min
 Response: 0
 Conc: N.D.



#20 Methoxychlor

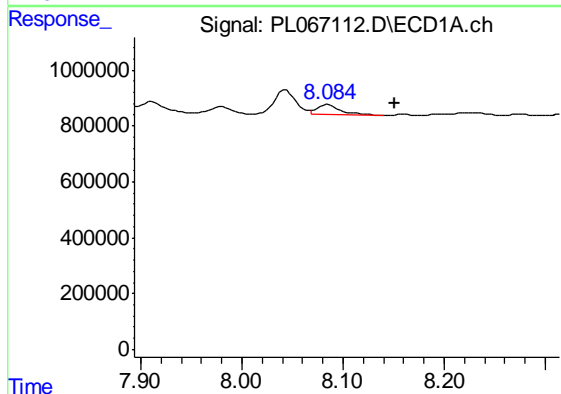
R.T.: 7.912 min
 Delta R.T.: -0.028 min
 Response: 359014
 Conc: 1.15 ng/ml

Instrument :
 ECD_L
 ClientSampleId :
 MDL-WATER-QT3-2021-05



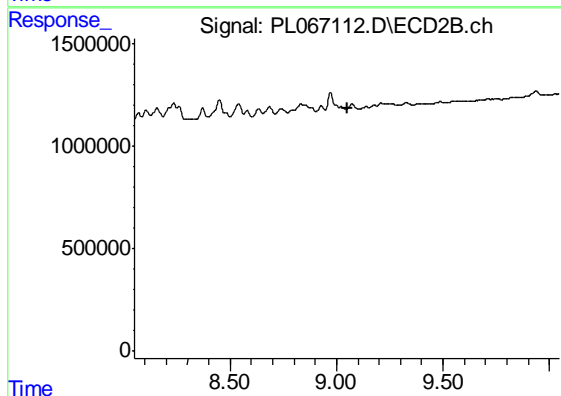
#20 Methoxychlor

R.T.: 0.000 min
 Exp R.T. : 8.893 min
 Response: 0
 Conc: N.D.



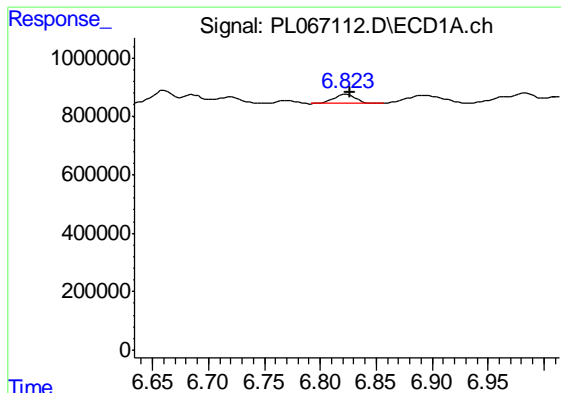
#21 Endrin ketone

R.T.: 8.085 min
 Delta R.T.: -0.066 min
 Response: 588386
 Conc: 0.90 ng/ml



#21 Endrin ketone

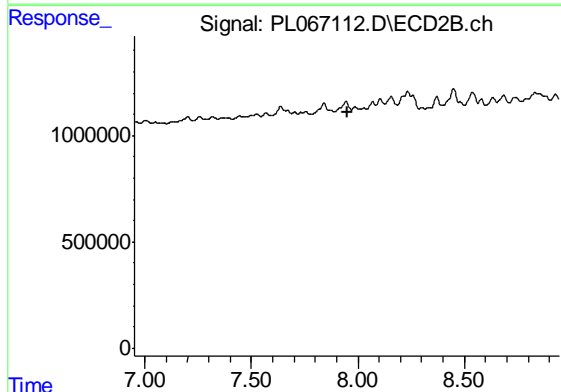
R.T.: 0.000 min
 Exp R.T. : 9.050 min
 Response: 0
 Conc: N.D.



#23 Toxaphene-2

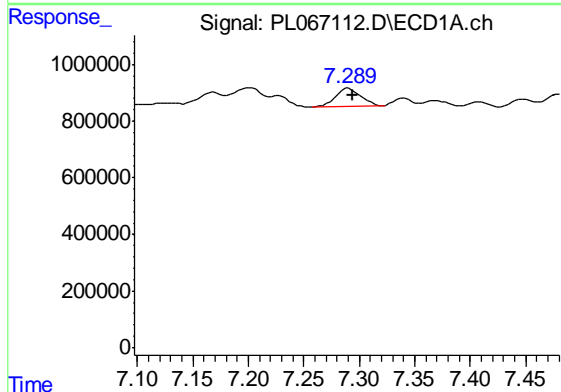
R.T.: 6.824 min
 Delta R.T.: -0.002 min
 Response: 421581
 Conc: 116.03 ng/ml

Instrument :
 ECD_L
 ClientSampleId :
 MDL-WATER-QT3-2021-05



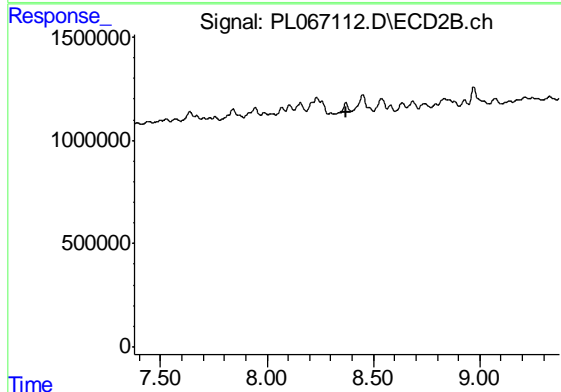
#23 Toxaphene-2

R.T.: 0.000 min
 Exp R.T. : 7.950 min
 Response: 0
 Conc: N.D.



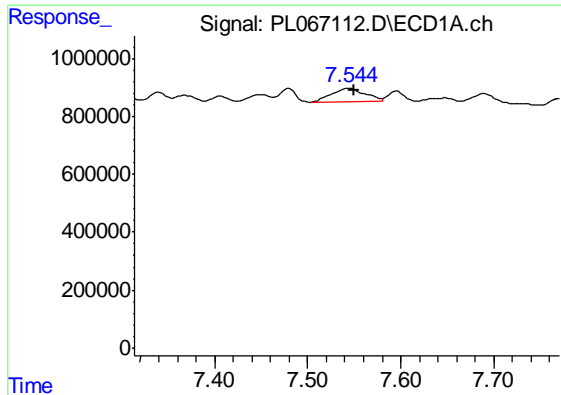
#24 Toxaphene-3

R.T.: 7.290 min
 Delta R.T.: -0.003 min
 Response: 990972
 Conc: 93.65 ng/ml



#24 Toxaphene-3

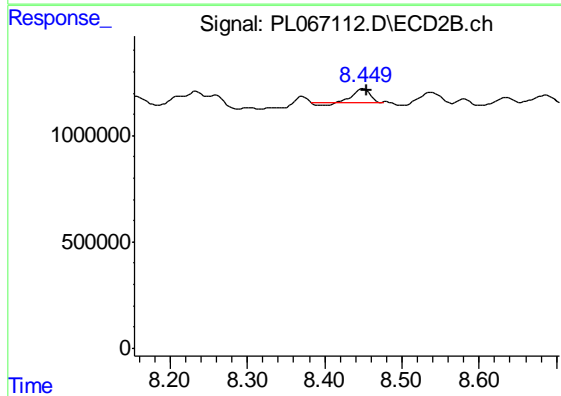
R.T.: 8.371 min
 Delta R.T.: -0.004 min
 Response: -122623
 Conc: N.D.



#25 Toxaphene-4

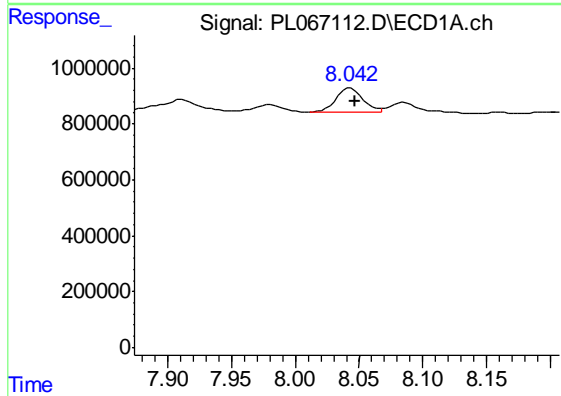
R.T.: 7.545 min
 Delta R.T.: -0.004 min
 Response: 1148770
 Conc: 103.50 ng/ml

Instrument :
 ECD_L
 ClientSampleId :
 MDL-WATER-QT3-2021-05



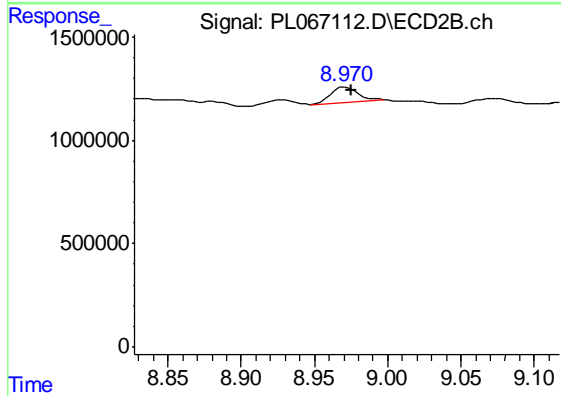
#25 Toxaphene-4

R.T.: 8.450 min
 Delta R.T.: -0.004 min
 Response: 830177
 Conc: 66.10 ng/ml



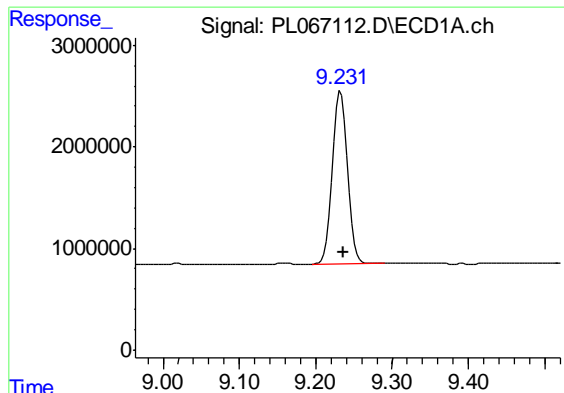
#26 Toxaphene-5

R.T.: 8.043 min
 Delta R.T.: -0.003 min
 Response: 1295003
 Conc: 106.73 ng/ml



#26 Toxaphene-5

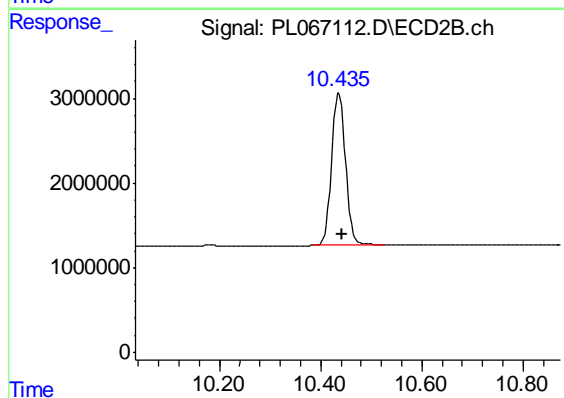
R.T.: 8.972 min
 Delta R.T.: -0.003 min
 Response: 950922
 Conc: 96.34 ng/ml



#27 Decachlorobiphenyl

R.T.: 9.233 min
Delta R.T.: -0.004 min
Response: 23344777
Conc: 36.93 ng/ml

Instrument :
ECD_L
ClientSampleId :
MDL-WATER-QT3-2021-05



#27 Decachlorobiphenyl

R.T.: 10.436 min
Delta R.T.: -0.005 min
Response: 34585708
Conc: 38.06 ng/ml