

Data Path : Z:\pestpcbsrv\HPCHEM1\ECD_0\Data\P0060523\
 Data File : P0095501.D
 Signal(s) : Signal #1: ECD1A.ch Signal #2: ECD2B.ch
 Acq On : 06 Jun 2023 02:42
 Operator : YP/AJ
 Sample : AR1242CCC500
 Misc :
 ALS Vial : 4 Sample Multiplier: 1

Instrument :
 ECD_L
 ClientSampleId :

Integration File signal 1: autoint1.e
 Integration File signal 2: autoint2.e
 Quant Time: Jun 06 05:33:52 2023
 Quant Method : Z:\pestpcbsrv\HPCHEM1\ECD_0\methods\P0060123.M
 Quant Title : GC EXTRACTABLES
 QLast Update : Fri Jun 02 06:53:15 2023
 Response via : Initial Calibration
 Integrator: ChemStation

Volume Inj. : 2 µl
 Signal #1 Phase : ZB-MR1 Signal #2 Phase: ZB-MR2
 Signal #1 Info : 30Mx0.32mmx 0.50µ Signal #2 Info : 30M x 0.32mm x 0.25µm

Compound	RT#1	RT#2	Resp#1	Resp#2	ng/ml	ng/ml
System Monitoring Compounds						
1) SA Tetrachlo...	4.437	3.654	191.1E6	87737429	51.856	55.937
2) SA Decachlor...	10.284	8.712	127.8E6	63794188	47.220	49.312
Target Compounds						
3) L1 AR-1016-1	5.619	4.748	44687978	22129210	368.723	380.048
4) L1 AR-1016-2	5.641	4.767	62111582	29128875	369.664	379.900
5) L1 AR-1016-3	5.704	4.945	39349084	15825809	374.134	381.220
6) L1 AR-1016-4	5.804	4.986	31292066	10141877	375.598	287.644
7) L1 AR-1016-5	6.102	5.202	33740097	22276306	407.891	500.716
8) L2 AR-1221-1	4.642	3.869	5250459	2384853	113.999	116.888
9) L2 AR-1221-2	4.735	3.955	8077668	3637715	235.116	234.325
10) L2 AR-1221-3	4.812	4.032	26980322	12558067	265.711	270.409
11) L3 AR-1232-1	4.812	4.032	26980322	12558067	367.841	373.887
12) L3 AR-1232-2	5.348	4.767	34569846	29128875	841.336	860.646
13) L3 AR-1232-3	5.641	4.945	62111582	15825809	840.383	848.807
14) L3 AR-1232-4	5.804	5.029	31292066	17318598	844.927	973.425
15) L3 AR-1232-5	5.896	5.202	28085589	22276306	915.207	1131.553
16) L4 AR-1242-1	5.619	4.748	44687978	22129210	482.831	496.057
17) L4 AR-1242-2	5.641	4.767	62111582	29128875	487.320	501.358
18) L4 AR-1242-3	5.704	4.945	39349084	15825809	483.525	502.571
19) L4 AR-1242-4	5.804	5.029	31292066	17318598	485.432	513.419
20) L4 AR-1242-5	6.548	5.556	33598805	24833070	486.680	579.178
21) L5 AR-1248-1	5.619	4.748	44687978	22129210	603.127	628.722
22) L5 AR-1248-2	5.896	4.986	28085589	10141877	262.534	203.112
23) L5 AR-1248-3	6.102	5.029	33740097	17318598	294.544	330.662
24) L5 AR-1248-4	6.508	5.202	33218594	22276306	267.795	365.216 #
25) L5 AR-1248-5	6.548	5.597	33598805	22831121	275.721	383.638 #
26) L6 AR-1254-1	6.482	5.556	30126038	24833070	236.227	282.179
27) L6 AR-1254-2	6.706	5.705	29105547	13765386	153.400	172.686
28) L6 AR-1254-3	7.072	6.112	21050757	11947223	110.954	97.746
29) L6 AR-1254-4	7.360	6.342	18020712	7821812	127.284	103.643
30) L6 AR-1254-5	7.783	6.763	6188040	3512949	39.036	31.398
31) L7 AR-1260-1	7.239	6.257	3352969	7718423	22.613	90.475 #
32) L7 AR-1260-2	7.497	6.432	9822746	1787070	55.961	17.489 #
33) L7 AR-1260-3	7.844	6.586	1170180	1780976	10.424	19.021 #
34) L7 AR-1260-4	8.074	7.061	1777104	263333	13.042	3.871 #
35) L7 AR-1260-5	8.413	7.306	492318	445537	1.934	2.825 #
36) L8 AR-1262-1	7.844	6.855	1170180	415621	6.339	8.977 #
37) L8 AR-1262-2	8.413	7.061	492318	263333	1.542	2.700 #
38) L8 AR-1262-3	8.747	7.601	266244	296721	1.199	3.871 #
39) L8 AR-1262-4	8.837	7.653	28723	359789	0.244	2.618 #
40) L8 AR-1262-5	9.492	8.194f	53660	423209	0.447	6.653 #
41) L9 AR-1268-1	8.747	7.601	266244	296721	0.722	1.373 #

Data Path : Z:\pestpcbsrv\HPCHEM1\ECD_0\Data\P0060523\
 Data File : P0095501.D
 Signal(s) : Signal #1: ECD1A.ch Signal #2: ECD2B.ch
 Acq On : 06 Jun 2023 02:42
 Operator : YP/AJ
 Sample : AR1242CCC500
 Misc :
 ALS Vial : 4 Sample Multiplier: 1

Instrument :
 ECD_L
 ClientSampleId :

Integration File signal 1: autoint1.e
 Integration File signal 2: autoint2.e
 Quant Time: Jun 06 05:33:52 2023
 Quant Method : Z:\pestpcbsrv\HPCHEM1\ECD_0\methods\P0060123.M
 Quant Title : GC EXTRACTABLES
 QLast Update : Fri Jun 02 06:53:15 2023
 Response via : Initial Calibration
 Integrator: ChemStation

Volume Inj. : 2 µl
 Signal #1 Phase : ZB-MR1 Signal #2 Phase: ZB-MR2
 Signal #1 Info : 30Mx0.32mmx 0.50µ Signal #2 Info : 30M x 0.32mm x 0.25µm

	Compound	RT#1	RT#2	Resp#1	Resp#2	ng/ml	ng/ml
42)	L9 AR-1268-2	8.837	7.653	28723	359789	0.085	1.885 #
43)	L9 AR-1268-3	9.061	7.869	630169	537668	2.180	3.317 #
44)	L9 AR-1268-4	9.501	8.194f	85162	423209	0.670	6.151 #
45)	L9 AR-1268-5	9.932	8.449	765583	368444	0.814	0.768

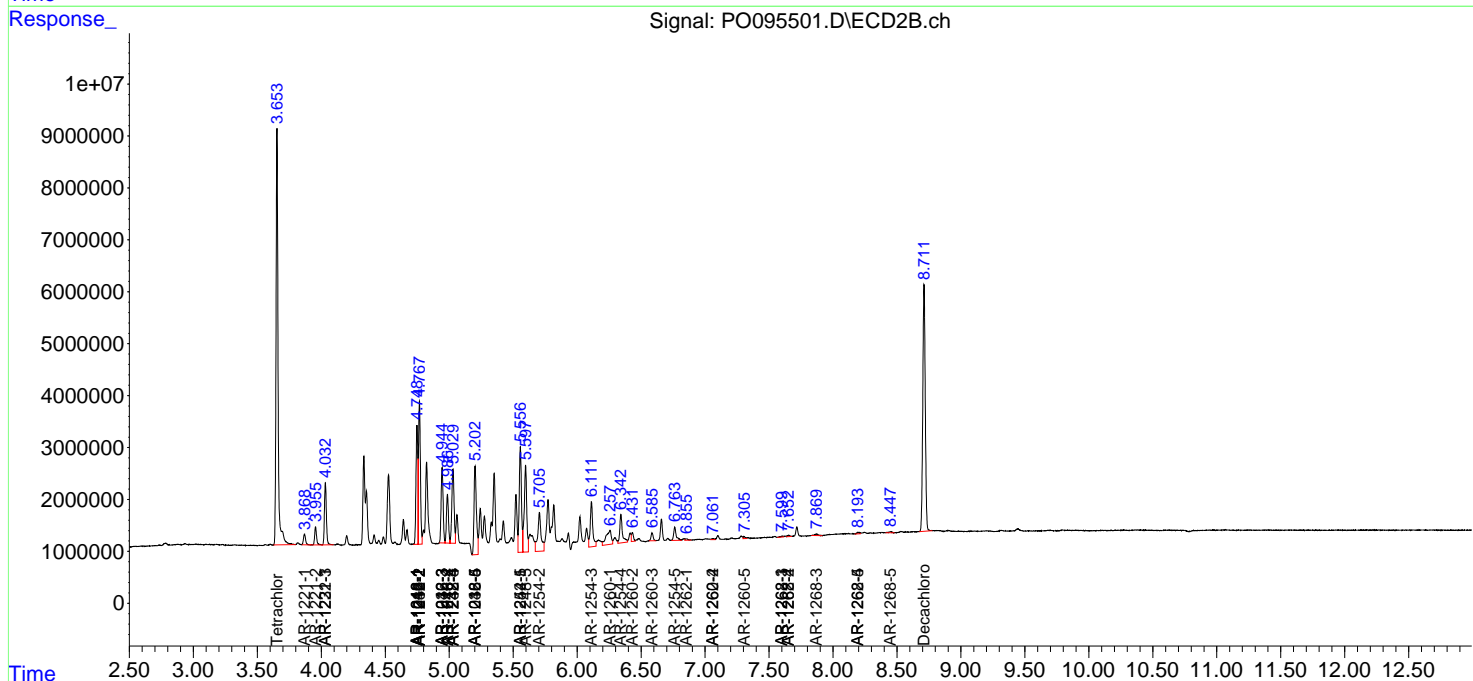
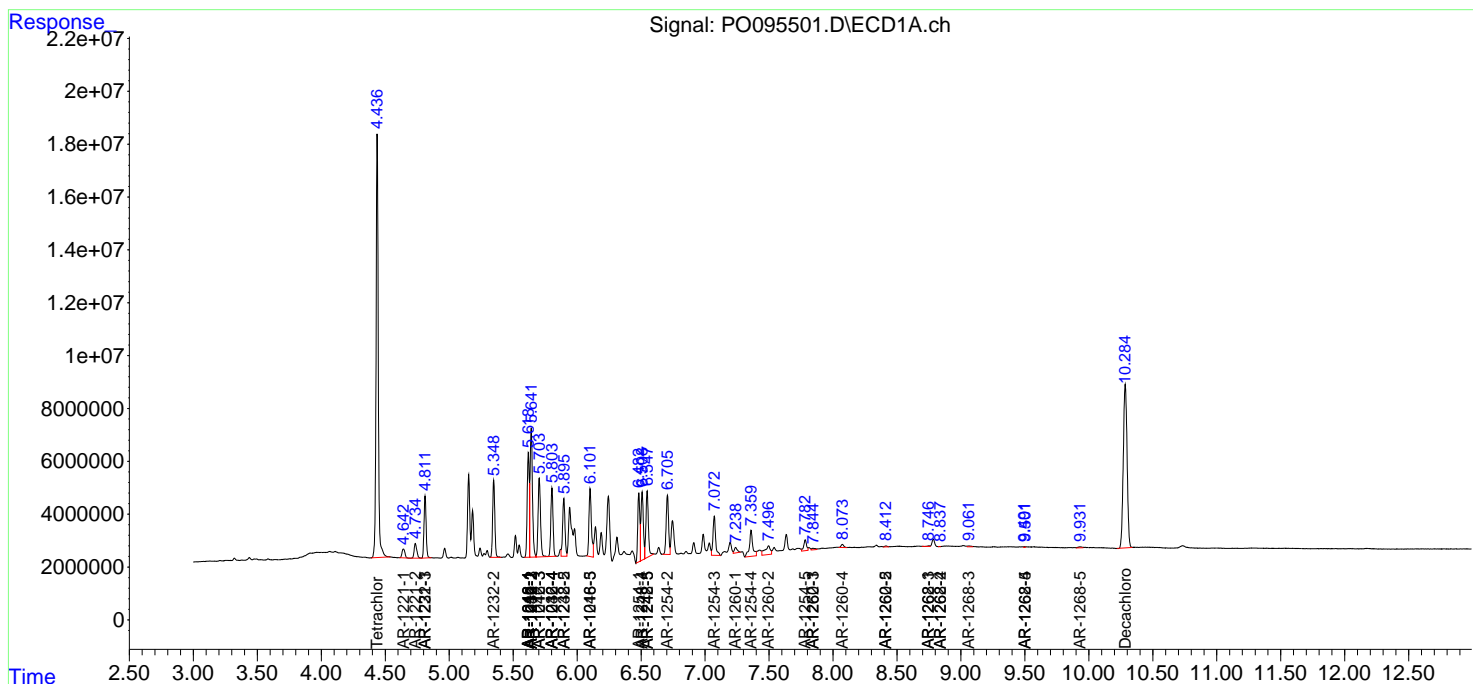
(f)=RT Delta > 1/2 Window (#)=Amounts differ by > 25% (m)=manual int.

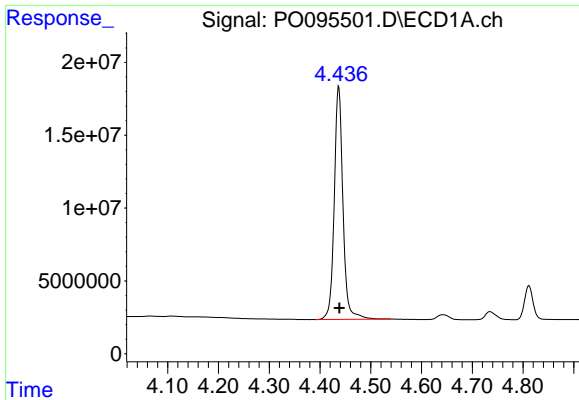
Data Path : Z:\pestpcbsrv\HPCHEM1\ECD_0\Data\PO060523\
 Data File : PO095501.D
 Signal(s) : Signal #1: ECD1A.ch Signal #2: ECD2B.ch
 Acq On : 06 Jun 2023 02:42
 Operator : YP/AJ
 Sample : AR1242CCC500
 Misc :
 ALS Vial : 4 Sample Multiplier: 1

Instrument :
 ECD_L
 ClientSampleId :

Integration File signal 1: autoint1.e
 Integration File signal 2: autoint2.e
 Quant Time: Jun 06 05:33:52 2023
 Quant Method : Z:\pestpcbsrv\HPCHEM1\ECD_0\methods\PO060123.M
 Quant Title : GC EXTRACTABLES
 QLast Update : Fri Jun 02 06:53:15 2023
 Response via : Initial Calibration
 Integrator: ChemStation

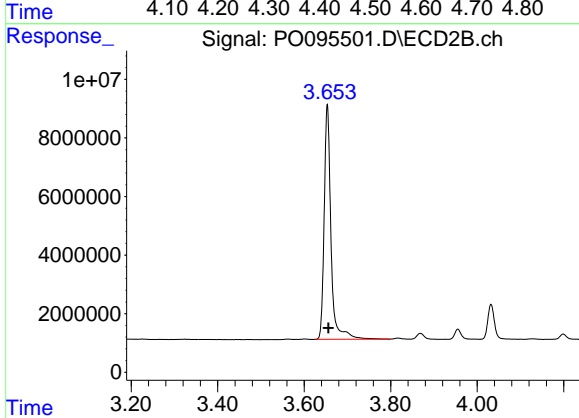
Volume Inj. : 2 µl
 Signal #1 Phase : ZB-MR1 Signal #2 Phase: ZB-MR2
 Signal #1 Info : 30Mx0.32mmx 0.50µ Signal #2 Info : 30M x 0.32mm x 0.25µm



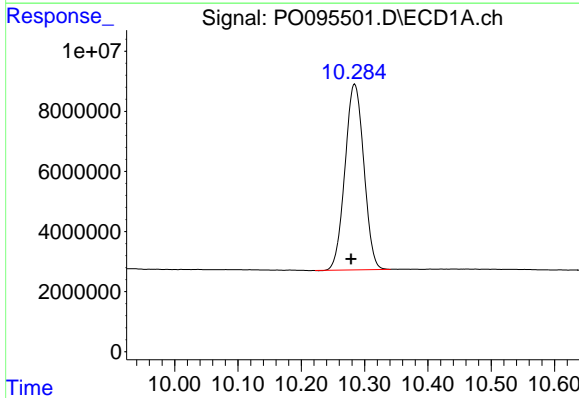


#1 Tetrachloro-m-xylene
 R.T.: 4.437 min
 Delta R.T.: -0.001 min
 Response: 191119215
 Conc: 51.86 ng/ml

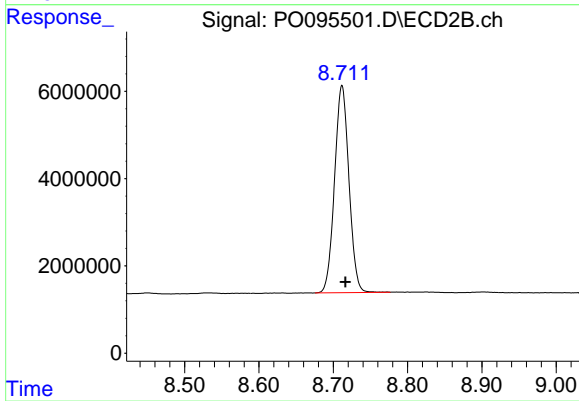
Instrument :
 ECD_L
 ClientSampleId :



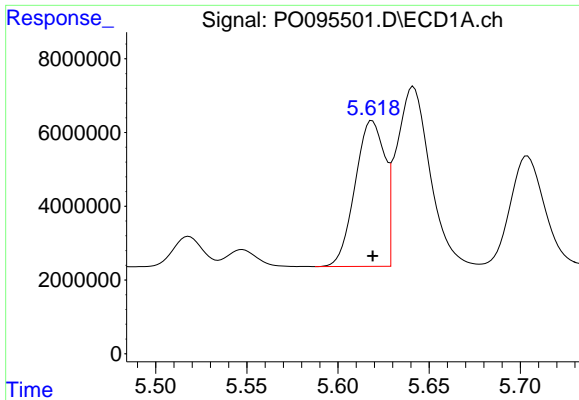
#1 Tetrachloro-m-xylene
 R.T.: 3.654 min
 Delta R.T.: -0.003 min
 Response: 87737429
 Conc: 55.94 ng/ml



#2 Decachlorobiphenyl
 R.T.: 10.284 min
 Delta R.T.: 0.006 min
 Response: 127800841
 Conc: 47.22 ng/ml



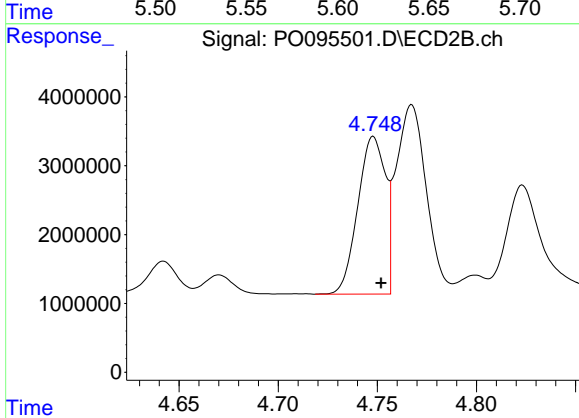
#2 Decachlorobiphenyl
 R.T.: 8.712 min
 Delta R.T.: -0.005 min
 Response: 63794188
 Conc: 49.31 ng/ml



#3 AR-1016-1

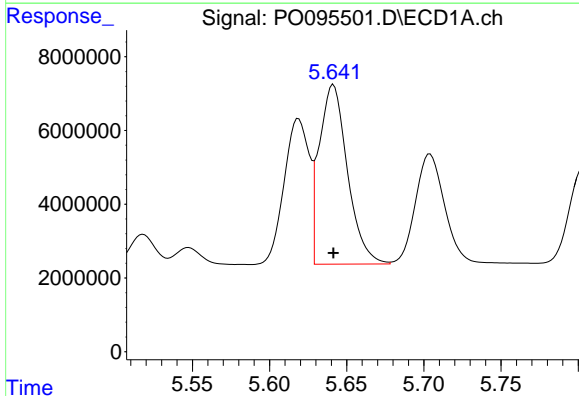
R.T.: 5.619 min
 Delta R.T.: 0.000 min
 Response: 44687978
 Conc: 368.72 ng/ml

Instrument :
 ECD_L
 ClientSampleId :



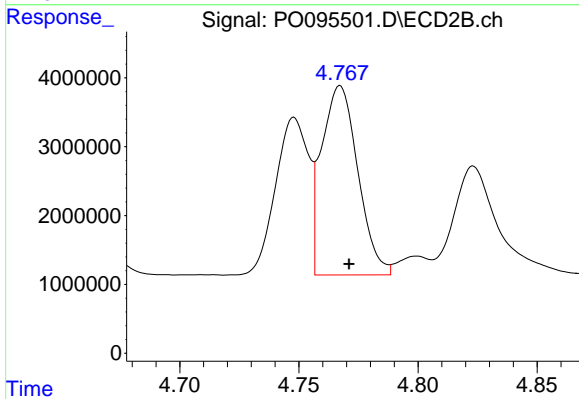
#3 AR-1016-1

R.T.: 4.748 min
 Delta R.T.: -0.004 min
 Response: 22129210
 Conc: 380.05 ng/ml



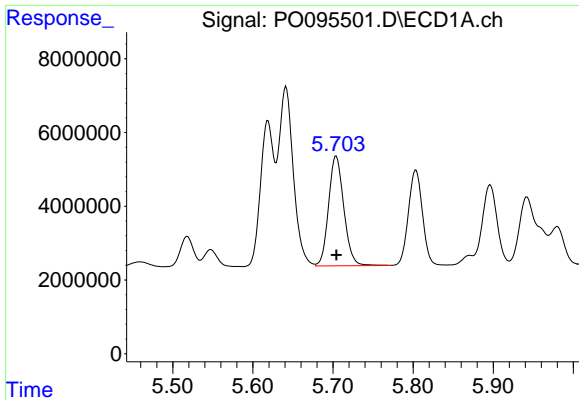
#4 AR-1016-2

R.T.: 5.641 min
 Delta R.T.: 0.000 min
 Response: 62111582
 Conc: 369.66 ng/ml



#4 AR-1016-2

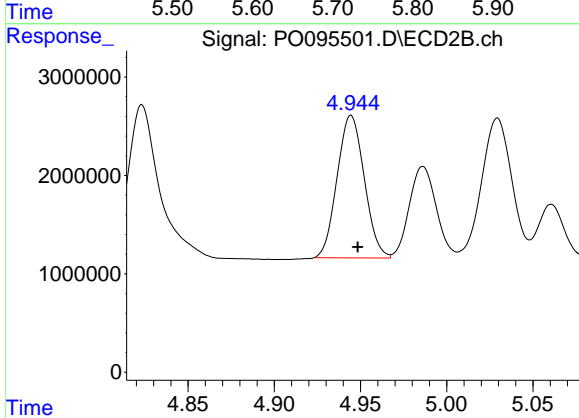
R.T.: 4.767 min
 Delta R.T.: -0.004 min
 Response: 29128875
 Conc: 379.90 ng/ml



#5 AR-1016-3

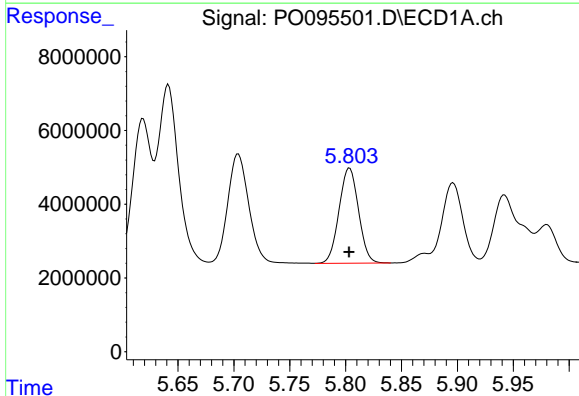
R.T.: 5.704 min
 Delta R.T.: 0.000 min
 Response: 39349084
 Conc: 374.13 ng/ml

Instrument :
 ECD_L
 ClientSampleId :



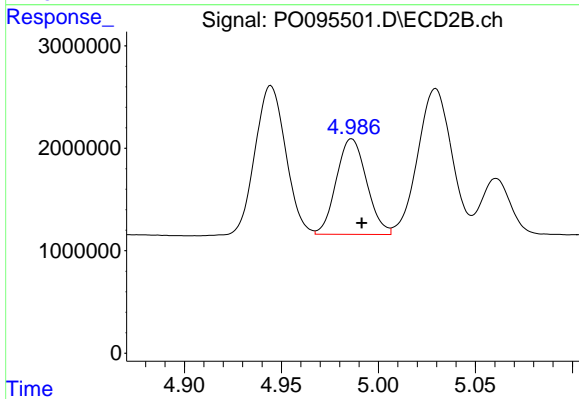
#5 AR-1016-3

R.T.: 4.945 min
 Delta R.T.: -0.004 min
 Response: 15825809
 Conc: 381.22 ng/ml



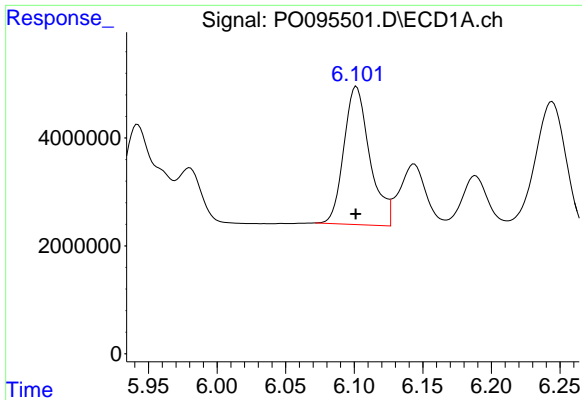
#6 AR-1016-4

R.T.: 5.804 min
 Delta R.T.: 0.000 min
 Response: 31292066
 Conc: 375.60 ng/ml



#6 AR-1016-4

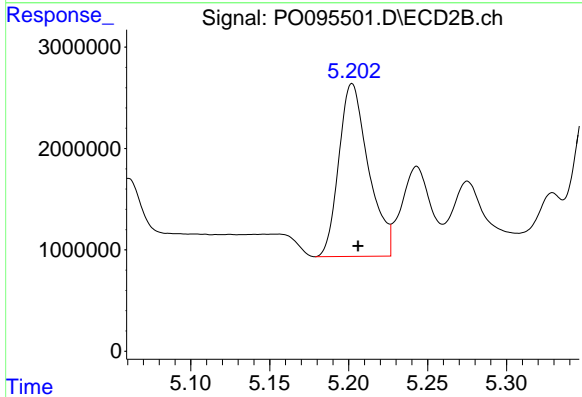
R.T.: 4.986 min
 Delta R.T.: -0.005 min
 Response: 10141877
 Conc: 287.64 ng/ml



#7 AR-1016-5

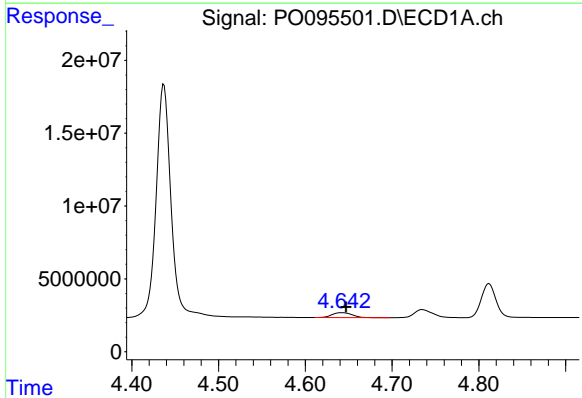
R.T.: 6.102 min
 Delta R.T.: 0.000 min
 Response: 33740097
 Conc: 407.89 ng/ml

Instrument :
 ECD_L
 ClientSampleId :



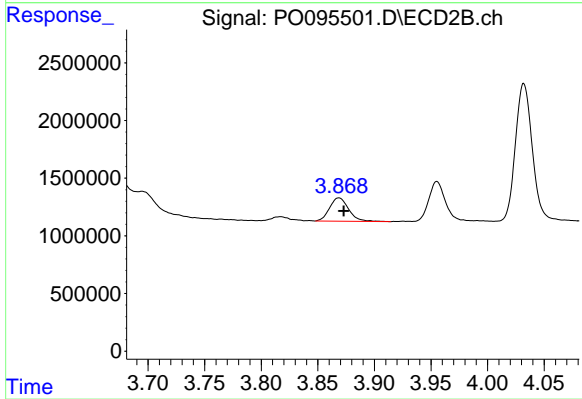
#7 AR-1016-5

R.T.: 5.202 min
 Delta R.T.: -0.004 min
 Response: 22276306
 Conc: 500.72 ng/ml



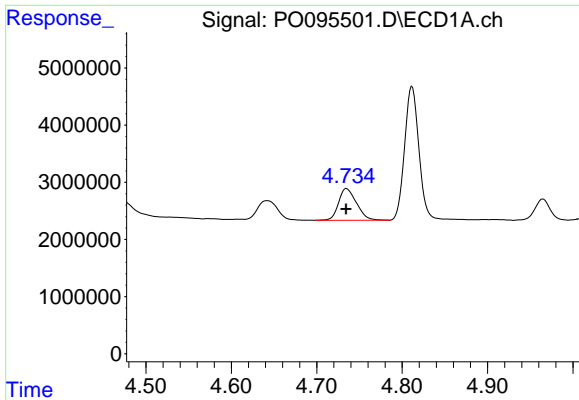
#8 AR-1221-1

R.T.: 4.642 min
 Delta R.T.: -0.005 min
 Response: 5250459
 Conc: 114.00 ng/ml



#8 AR-1221-1

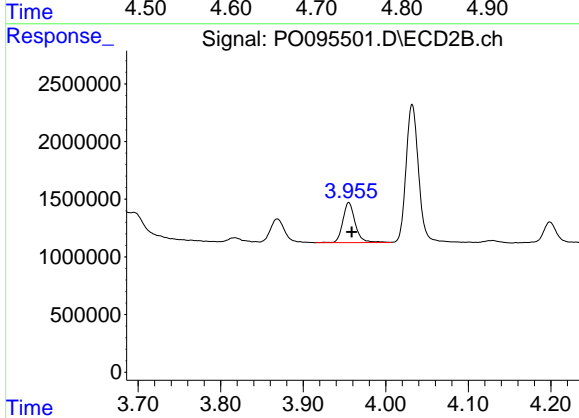
R.T.: 3.869 min
 Delta R.T.: -0.004 min
 Response: 2384853
 Conc: 116.89 ng/ml



#9 AR-1221-2

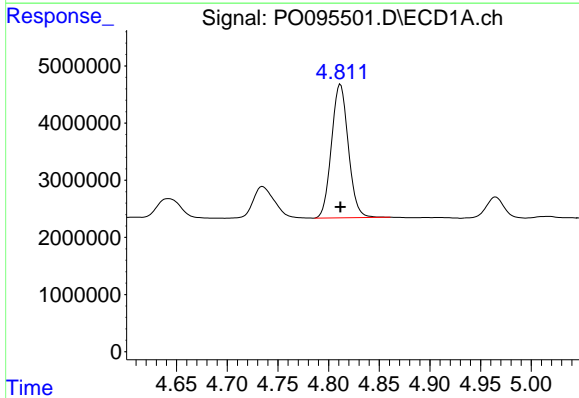
R.T.: 4.735 min
 Delta R.T.: 0.000 min
 Response: 8077668
 Conc: 235.12 ng/ml

Instrument :
 ECD_L
 ClientSampleId :



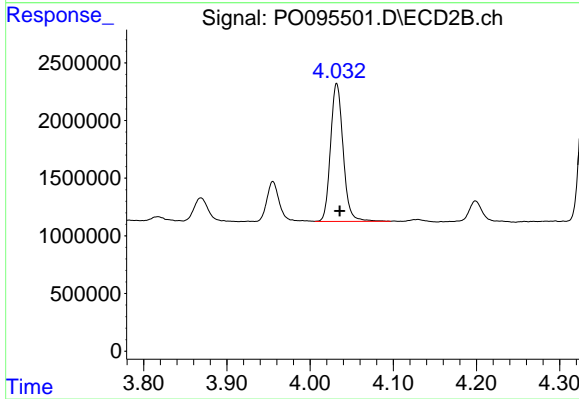
#9 AR-1221-2

R.T.: 3.955 min
 Delta R.T.: -0.003 min
 Response: 3637715
 Conc: 234.32 ng/ml



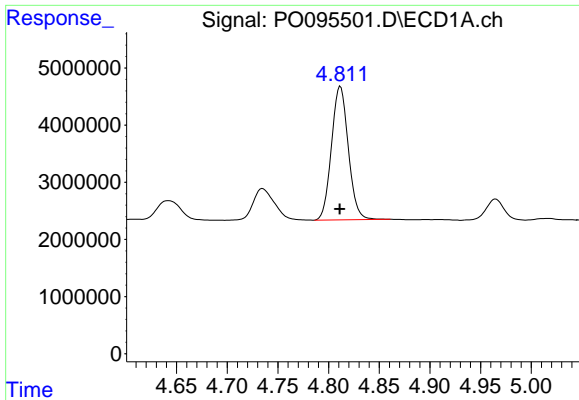
#10 AR-1221-3

R.T.: 4.812 min
 Delta R.T.: 0.000 min
 Response: 26980322
 Conc: 265.71 ng/ml



#10 AR-1221-3

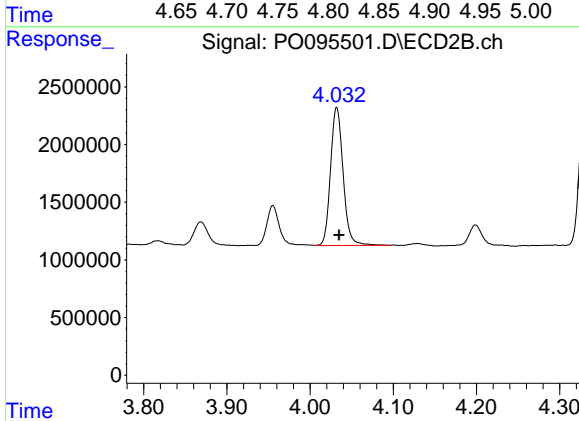
R.T.: 4.032 min
 Delta R.T.: -0.004 min
 Response: 12558067
 Conc: 270.41 ng/ml



#11 AR-1232-1

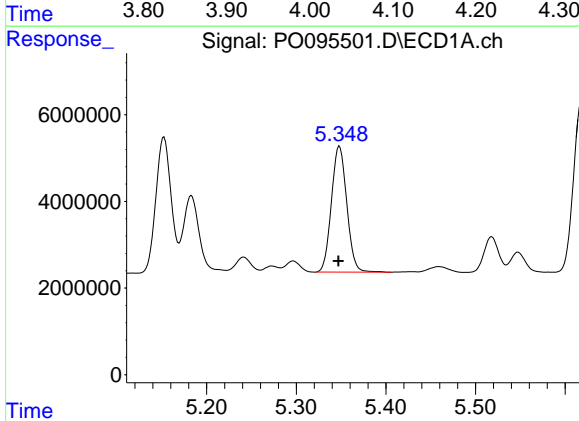
R.T.: 4.812 min
 Delta R.T.: 0.000 min
 Response: 26980322
 Conc: 367.84 ng/ml

Instrument :
 ECD_L
 ClientSampleId :



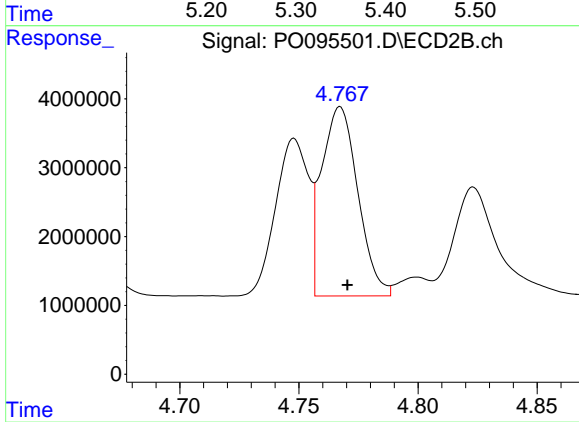
#11 AR-1232-1

R.T.: 4.032 min
 Delta R.T.: -0.003 min
 Response: 12558067
 Conc: 373.89 ng/ml



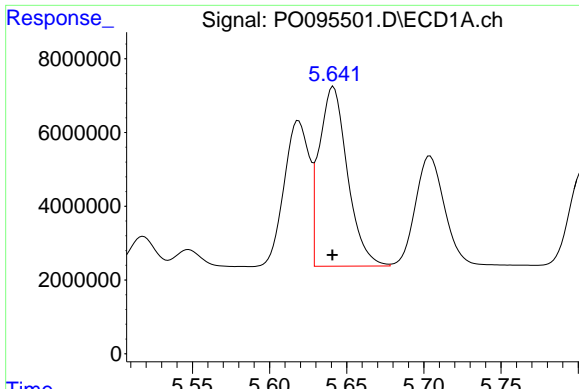
#12 AR-1232-2

R.T.: 5.348 min
 Delta R.T.: 0.000 min
 Response: 34569846
 Conc: 841.34 ng/ml



#12 AR-1232-2

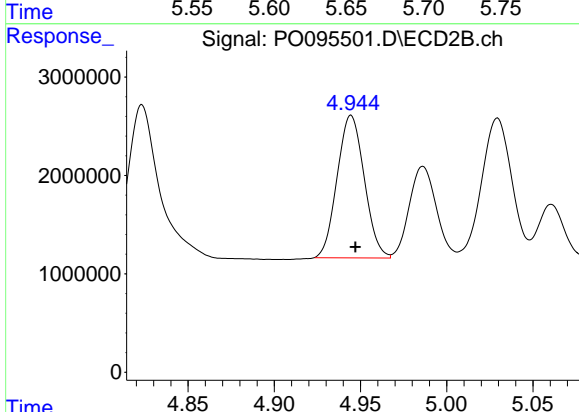
R.T.: 4.767 min
 Delta R.T.: -0.003 min
 Response: 29128875
 Conc: 860.65 ng/ml



#13 AR-1232-3

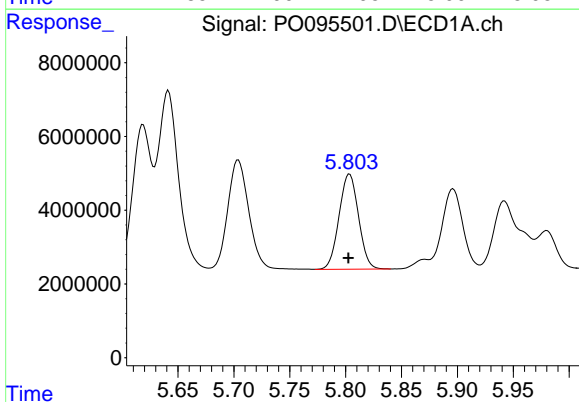
R.T.: 5.641 min
 Delta R.T.: 0.000 min
 Response: 62111582
 Conc: 840.38 ng/ml

Instrument :
 ECD_L
 ClientSampleId :



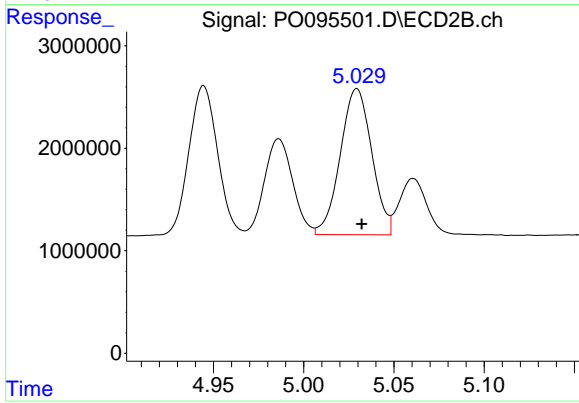
#13 AR-1232-3

R.T.: 4.945 min
 Delta R.T.: -0.003 min
 Response: 15825809
 Conc: 848.81 ng/ml



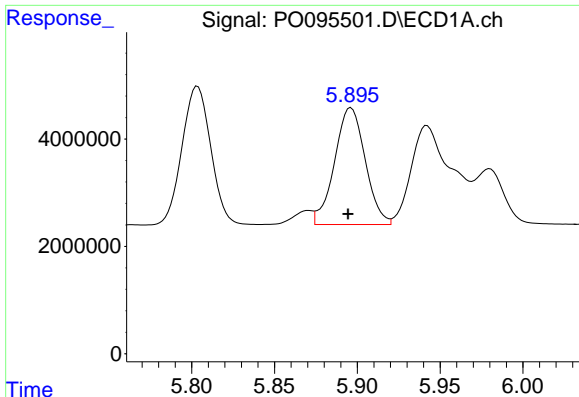
#14 AR-1232-4

R.T.: 5.804 min
 Delta R.T.: 0.001 min
 Response: 31292066
 Conc: 844.93 ng/ml



#14 AR-1232-4

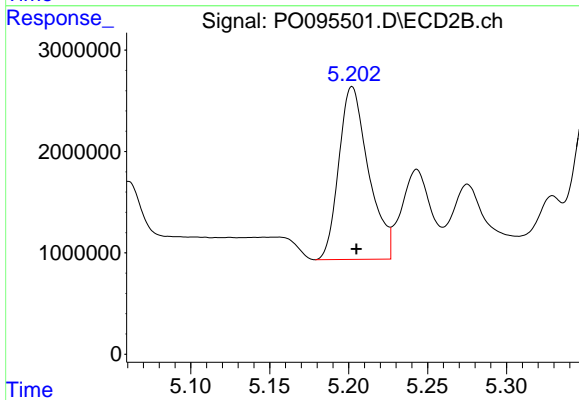
R.T.: 5.029 min
 Delta R.T.: -0.003 min
 Response: 17318598
 Conc: 973.42 ng/ml



#15 AR-1232-5

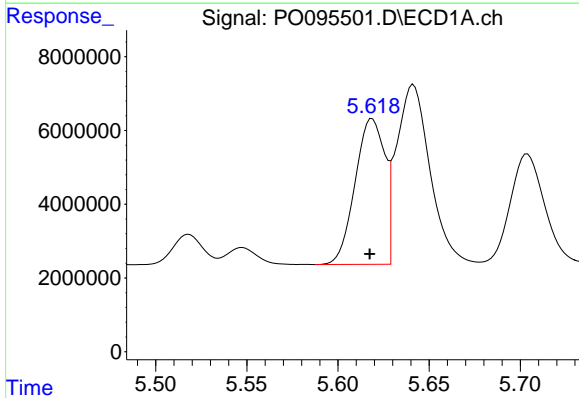
R.T.: 5.896 min
 Delta R.T.: 0.002 min
 Response: 28085589
 Conc: 915.21 ng/ml

Instrument :
 ECD_L
 ClientSampleId :



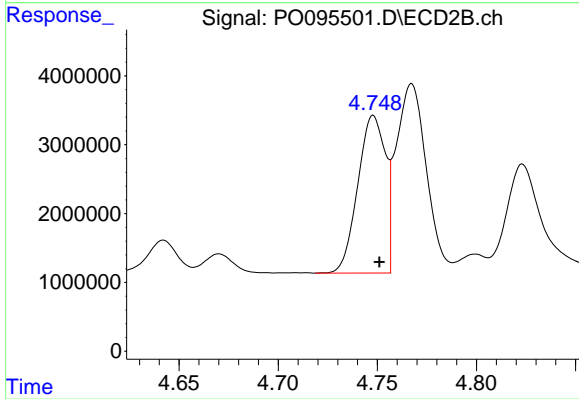
#15 AR-1232-5

R.T.: 5.202 min
 Delta R.T.: -0.003 min
 Response: 22276306
 Conc: 1131.55 ng/ml



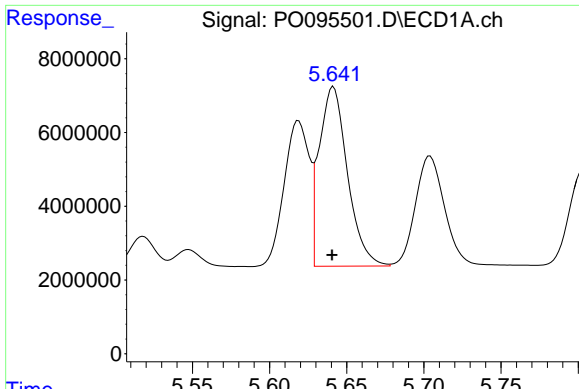
#16 AR-1242-1

R.T.: 5.619 min
 Delta R.T.: 0.001 min
 Response: 44687978
 Conc: 482.83 ng/ml



#16 AR-1242-1

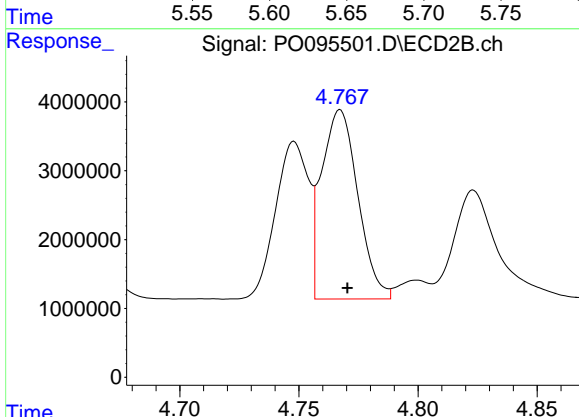
R.T.: 4.748 min
 Delta R.T.: -0.003 min
 Response: 22129210
 Conc: 496.06 ng/ml



#17 AR-1242-2

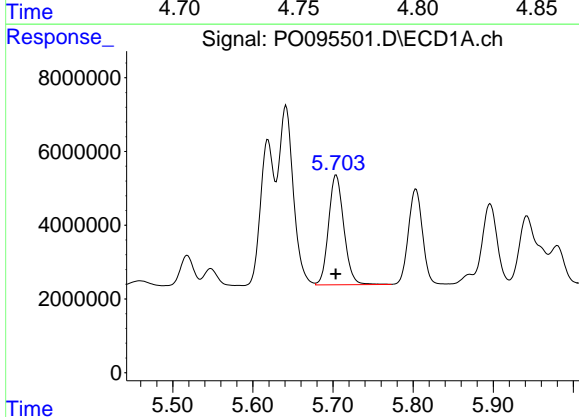
R.T.: 5.641 min
 Delta R.T.: 0.000 min
 Response: 62111582
 Conc: 487.32 ng/ml

Instrument :
 ECD_L
 ClientSampleId :



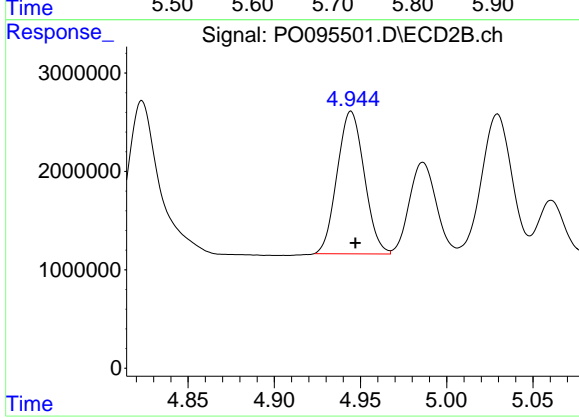
#17 AR-1242-2

R.T.: 4.767 min
 Delta R.T.: -0.003 min
 Response: 29128875
 Conc: 501.36 ng/ml



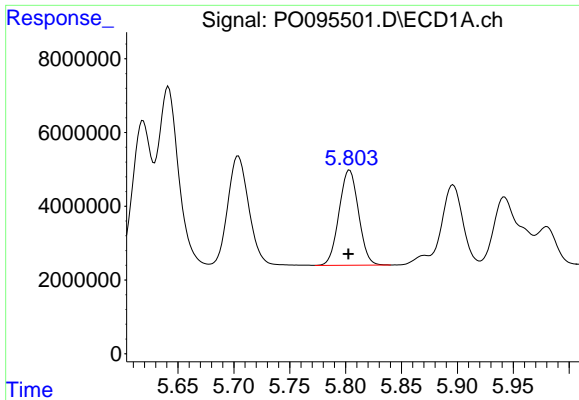
#18 AR-1242-3

R.T.: 5.704 min
 Delta R.T.: 0.000 min
 Response: 39349084
 Conc: 483.53 ng/ml



#18 AR-1242-3

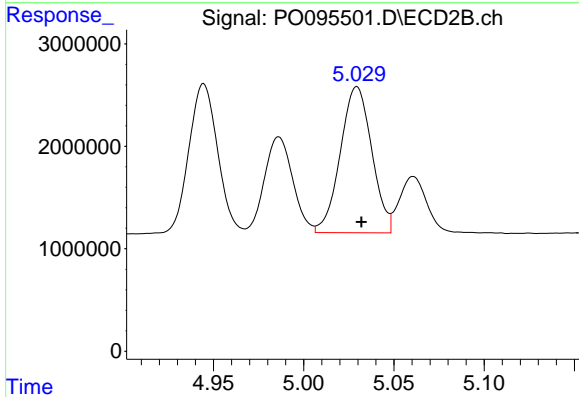
R.T.: 4.945 min
 Delta R.T.: -0.003 min
 Response: 15825809
 Conc: 502.57 ng/ml



#19 AR-1242-4

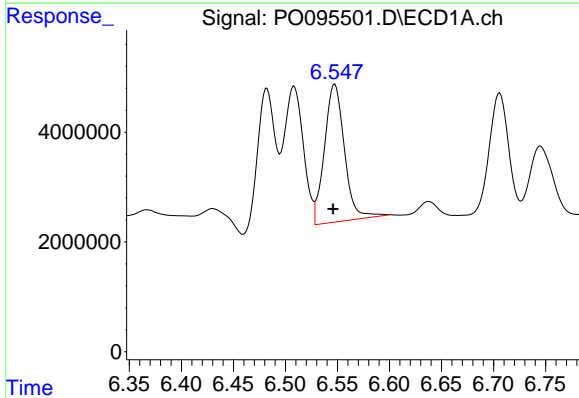
R.T.: 5.804 min
 Delta R.T.: 0.001 min
 Response: 31292066
 Conc: 485.43 ng/ml

Instrument :
 ECD_L
 ClientSampleId :



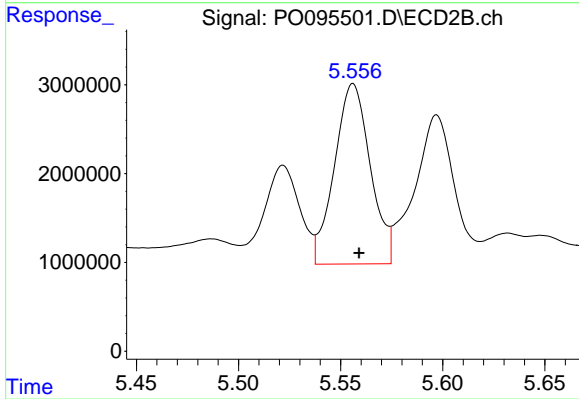
#19 AR-1242-4

R.T.: 5.029 min
 Delta R.T.: -0.003 min
 Response: 17318598
 Conc: 513.42 ng/ml



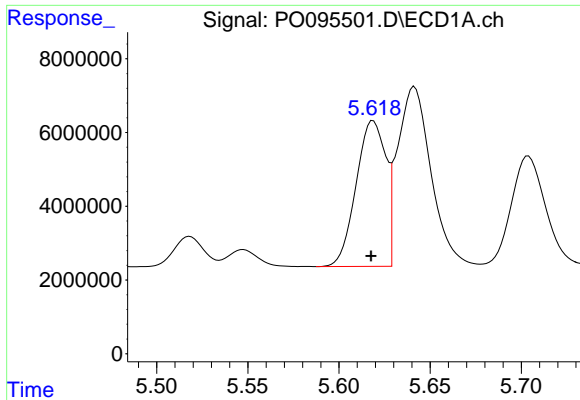
#20 AR-1242-5

R.T.: 6.548 min
 Delta R.T.: 0.002 min
 Response: 33598805
 Conc: 486.68 ng/ml



#20 AR-1242-5

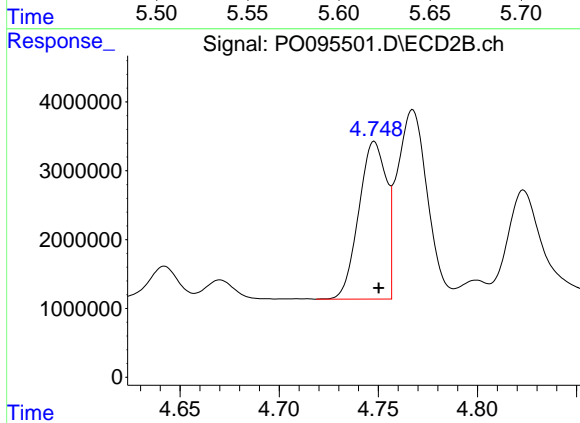
R.T.: 5.556 min
 Delta R.T.: -0.003 min
 Response: 24833070
 Conc: 579.18 ng/ml



#21 AR-1248-1

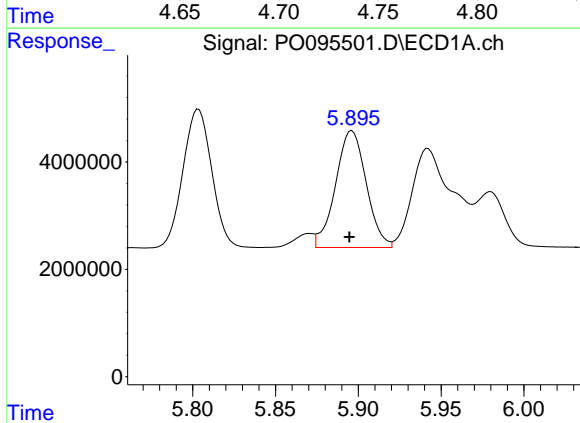
R.T.: 5.619 min
 Delta R.T.: 0.001 min
 Response: 44687978
 Conc: 603.13 ng/ml

Instrument :
 ECD_L
 ClientSampleId :



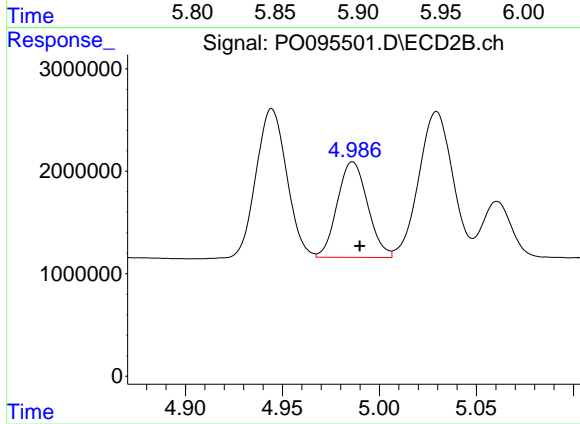
#21 AR-1248-1

R.T.: 4.748 min
 Delta R.T.: -0.002 min
 Response: 22129210
 Conc: 628.72 ng/ml



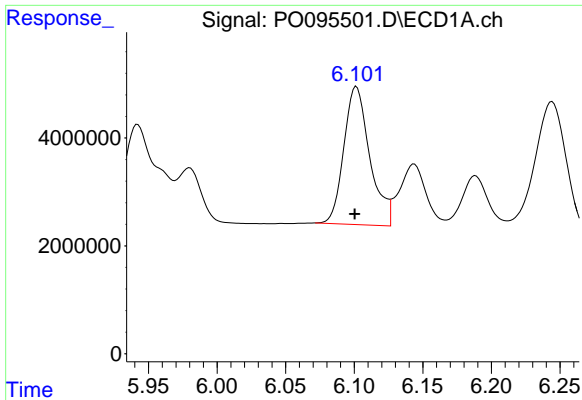
#22 AR-1248-2

R.T.: 5.896 min
 Delta R.T.: 0.002 min
 Response: 28085589
 Conc: 262.53 ng/ml



#22 AR-1248-2

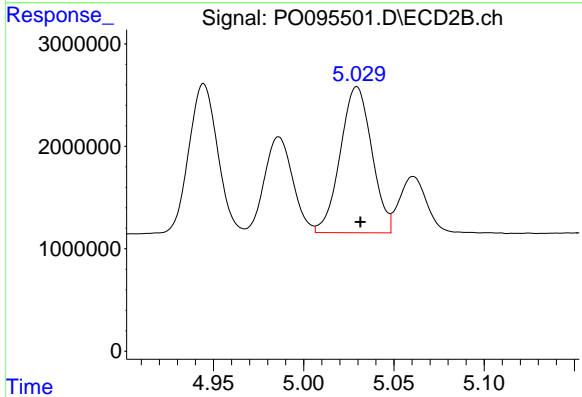
R.T.: 4.986 min
 Delta R.T.: -0.004 min
 Response: 10141877
 Conc: 203.11 ng/ml



#23 AR-1248-3

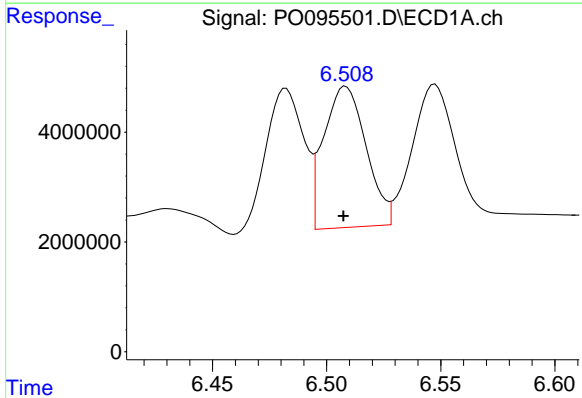
R.T.: 6.102 min
 Delta R.T.: 0.001 min
 Response: 33740097
 Conc: 294.54 ng/ml

Instrument :
 ECD_L
 ClientSampleId :



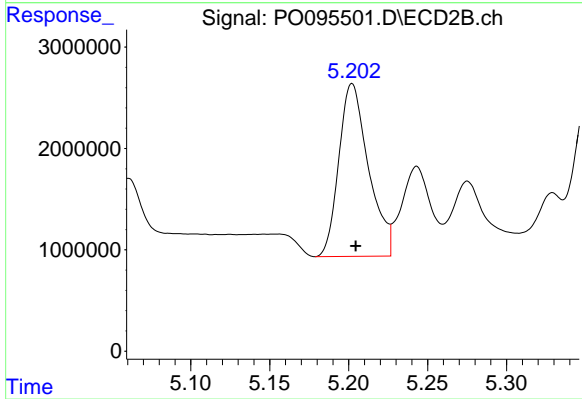
#23 AR-1248-3

R.T.: 5.029 min
 Delta R.T.: -0.002 min
 Response: 17318598
 Conc: 330.66 ng/ml



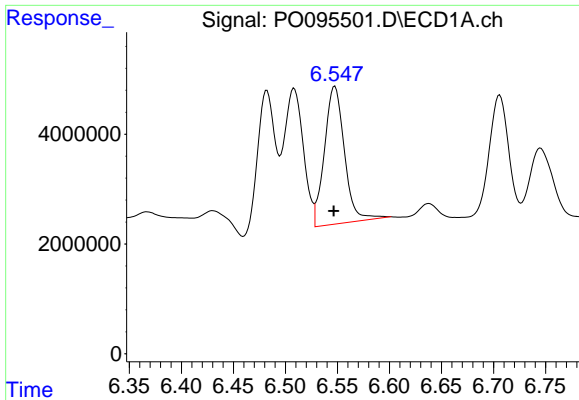
#24 AR-1248-4

R.T.: 6.508 min
 Delta R.T.: 0.001 min
 Response: 33218594
 Conc: 267.80 ng/ml



#24 AR-1248-4

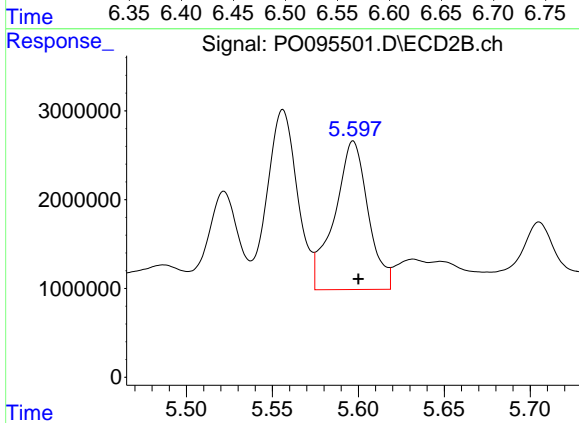
R.T.: 5.202 min
 Delta R.T.: -0.002 min
 Response: 22276306
 Conc: 365.22 ng/ml



#25 AR-1248-5

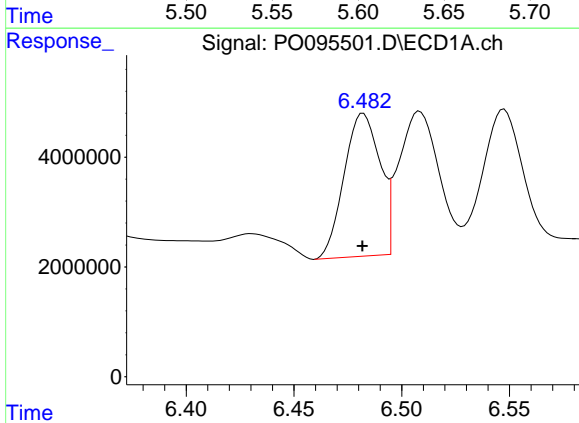
R.T.: 6.548 min
 Delta R.T.: 0.001 min
 Response: 33598805
 Conc: 275.72 ng/ml

Instrument :
 ECD_L
 ClientSampleId :



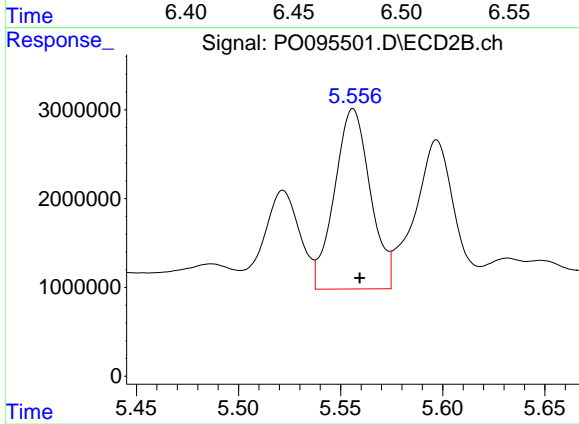
#25 AR-1248-5

R.T.: 5.597 min
 Delta R.T.: -0.003 min
 Response: 22831121
 Conc: 383.64 ng/ml



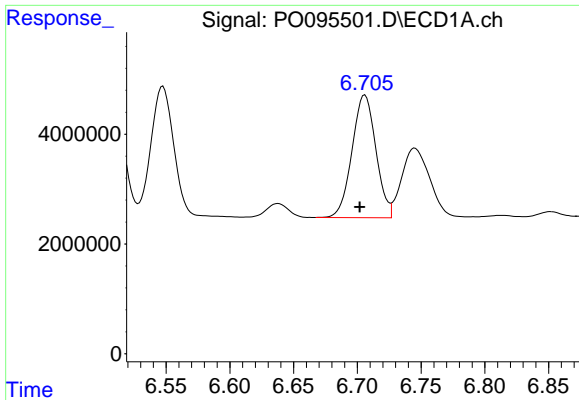
#26 AR-1254-1

R.T.: 6.482 min
 Delta R.T.: 0.000 min
 Response: 30126038
 Conc: 236.23 ng/ml



#26 AR-1254-1

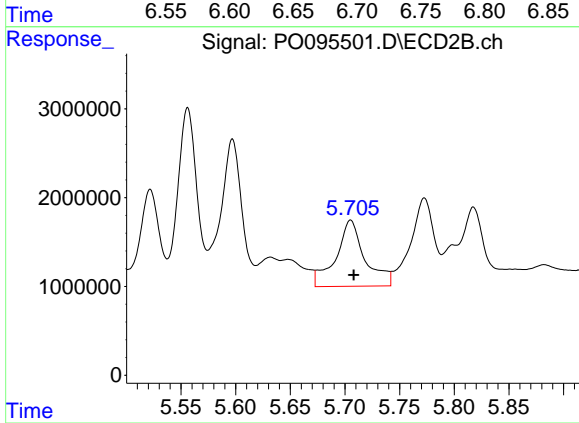
R.T.: 5.556 min
 Delta R.T.: -0.003 min
 Response: 24833070
 Conc: 282.18 ng/ml



#27 AR-1254-2

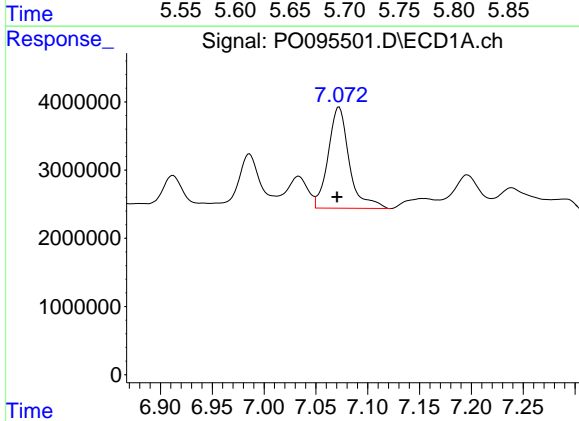
R.T.: 6.706 min
 Delta R.T.: 0.004 min
 Response: 29105547
 Conc: 153.40 ng/ml

Instrument :
 ECD_L
 ClientSampleId :



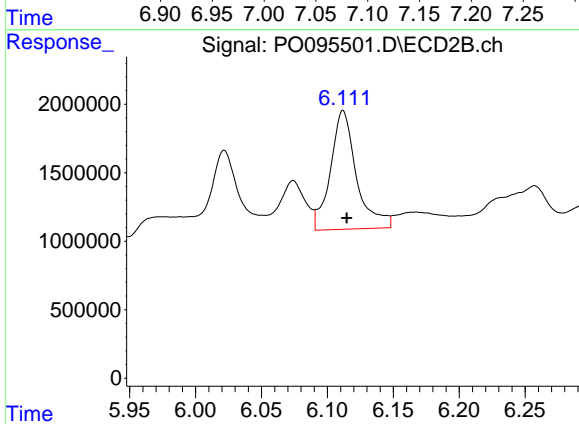
#27 AR-1254-2

R.T.: 5.705 min
 Delta R.T.: -0.003 min
 Response: 13765386
 Conc: 172.69 ng/ml



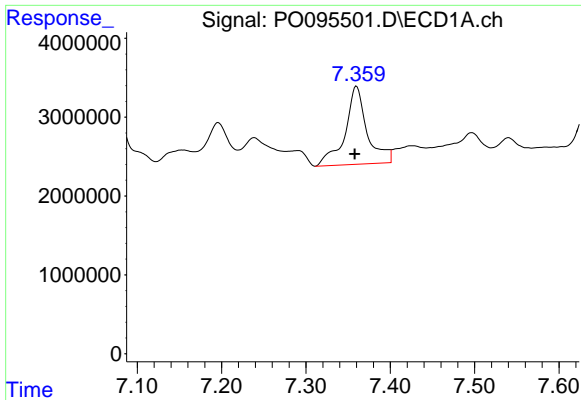
#28 AR-1254-3

R.T.: 7.072 min
 Delta R.T.: 0.002 min
 Response: 21050757
 Conc: 110.95 ng/ml



#28 AR-1254-3

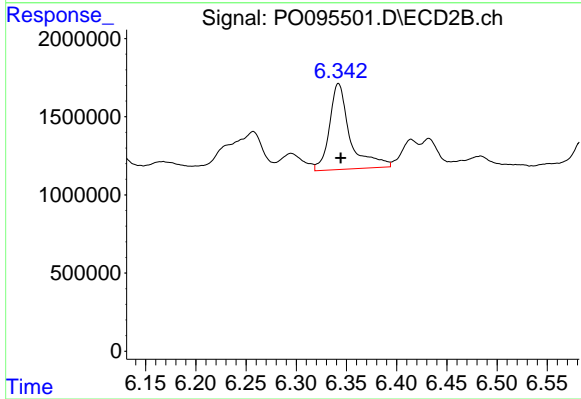
R.T.: 6.112 min
 Delta R.T.: -0.003 min
 Response: 11947223
 Conc: 97.75 ng/ml



#29 AR-1254-4

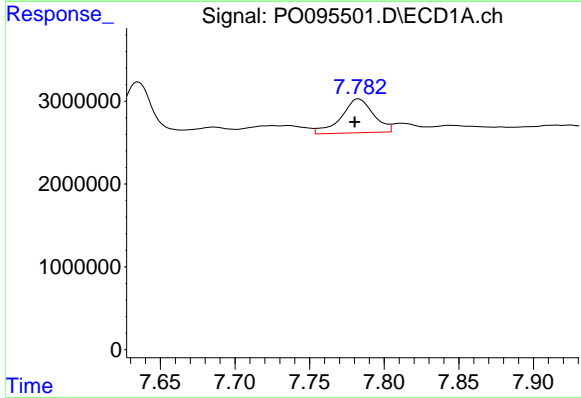
R.T.: 7.360 min
 Delta R.T.: 0.002 min
 Response: 18020712
 Conc: 127.28 ng/ml

Instrument :
 ECD_L
 ClientSampleId :



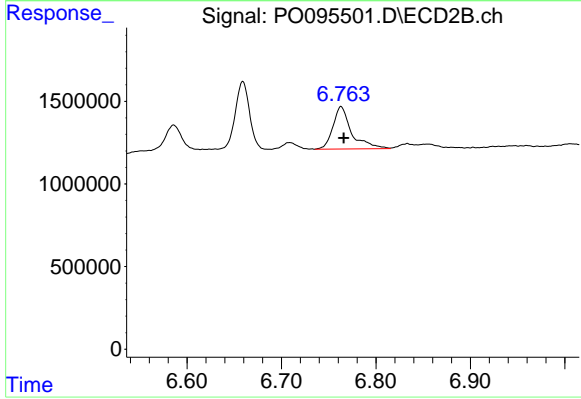
#29 AR-1254-4

R.T.: 6.342 min
 Delta R.T.: -0.002 min
 Response: 7821812
 Conc: 103.64 ng/ml



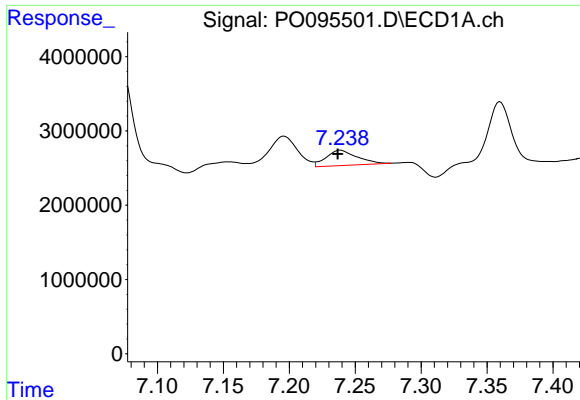
#30 AR-1254-5

R.T.: 7.783 min
 Delta R.T.: 0.003 min
 Response: 6188040
 Conc: 39.04 ng/ml



#30 AR-1254-5

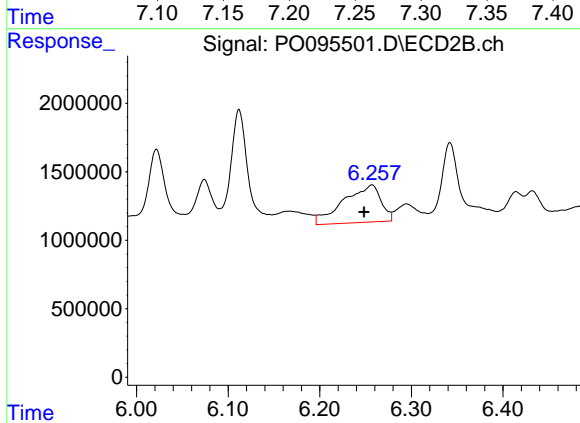
R.T.: 6.763 min
 Delta R.T.: -0.003 min
 Response: 3512949
 Conc: 31.40 ng/ml



#31 AR-1260-1

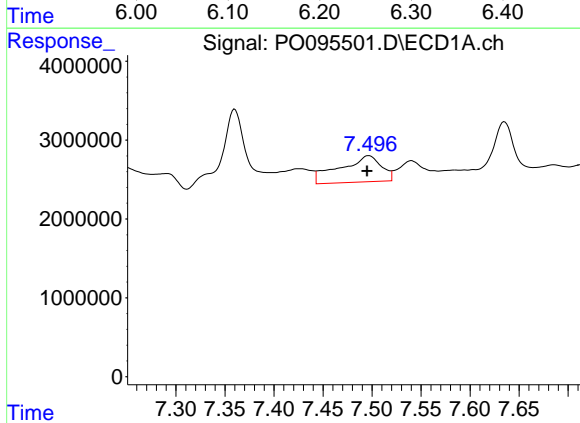
R.T.: 7.239 min
 Delta R.T.: 0.002 min
 Response: 3352969
 Conc: 22.61 ng/ml

Instrument :
 ECD_L
 ClientSampleId :



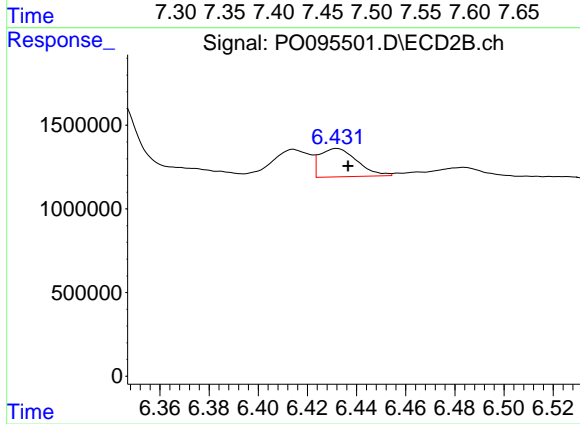
#31 AR-1260-1

R.T.: 6.257 min
 Delta R.T.: 0.009 min
 Response: 7718423
 Conc: 90.47 ng/ml



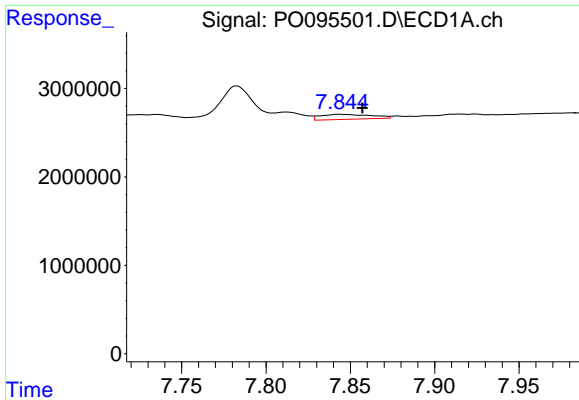
#32 AR-1260-2

R.T.: 7.497 min
 Delta R.T.: 0.002 min
 Response: 9822746
 Conc: 55.96 ng/ml



#32 AR-1260-2

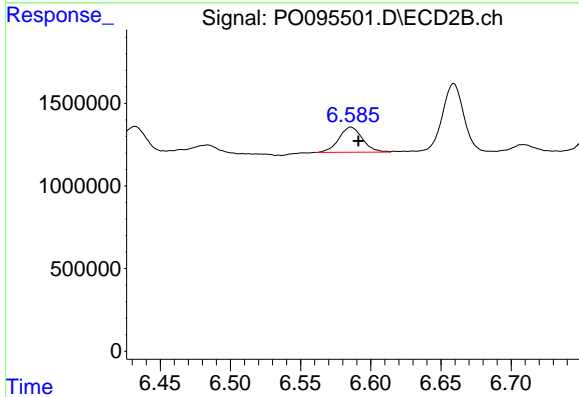
R.T.: 6.432 min
 Delta R.T.: -0.005 min
 Response: 1787070
 Conc: 17.49 ng/ml



#33 AR-1260-3

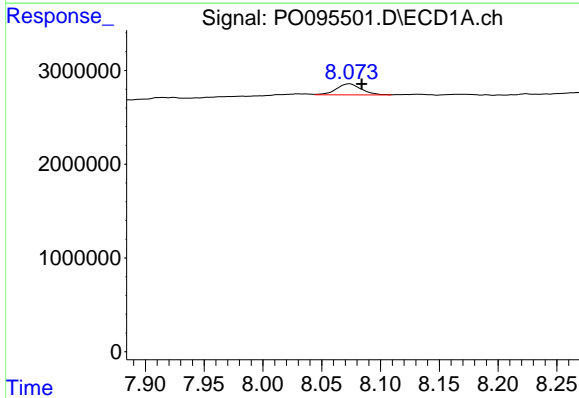
R.T.: 7.844 min
 Delta R.T.: -0.013 min
 Response: 1170180
 Conc: 10.42 ng/ml

Instrument :
 ECD_L
 ClientSampleId :



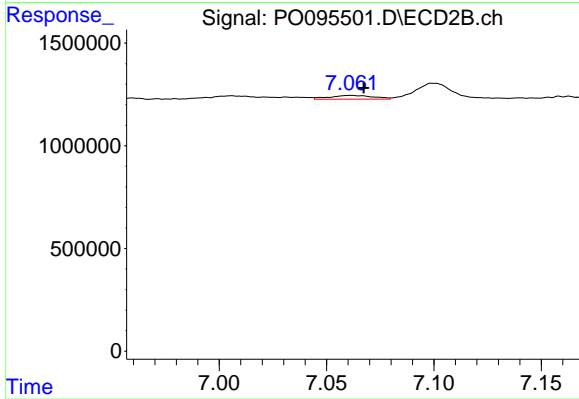
#33 AR-1260-3

R.T.: 6.586 min
 Delta R.T.: -0.005 min
 Response: 1780976
 Conc: 19.02 ng/ml



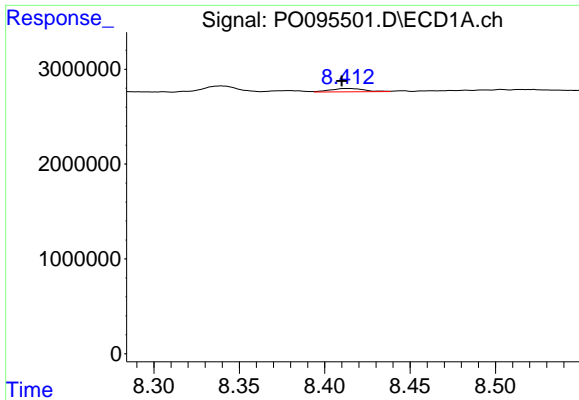
#34 AR-1260-4

R.T.: 8.074 min
 Delta R.T.: -0.010 min
 Response: 1777104
 Conc: 13.04 ng/ml



#34 AR-1260-4

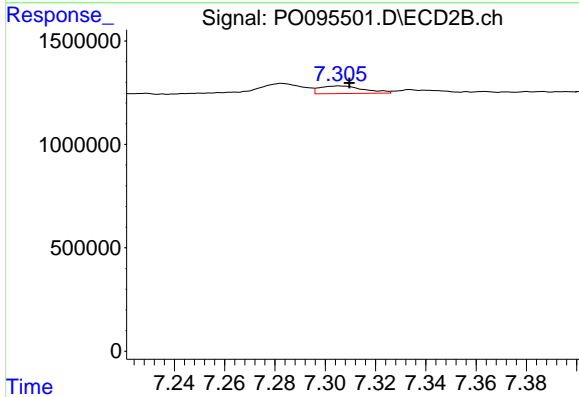
R.T.: 7.061 min
 Delta R.T.: -0.006 min
 Response: 263333
 Conc: 3.87 ng/ml



#35 AR-1260-5

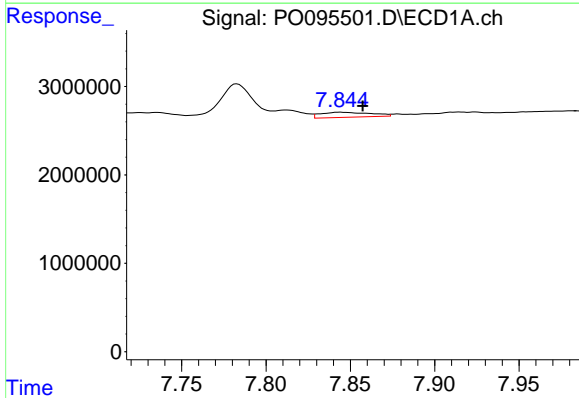
R.T.: 8.413 min
 Delta R.T.: 0.003 min
 Response: 492318
 Conc: 1.93 ng/ml

Instrument :
 ECD_L
 ClientSampleId :



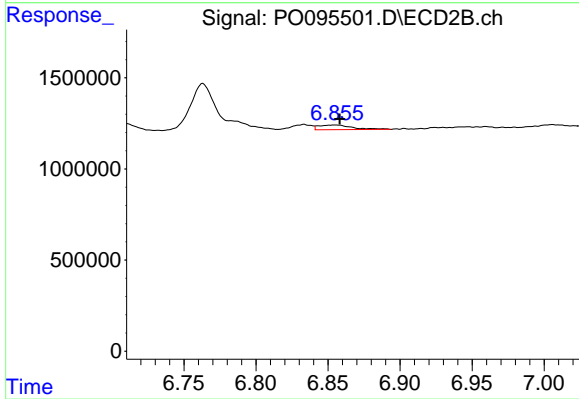
#35 AR-1260-5

R.T.: 7.306 min
 Delta R.T.: -0.004 min
 Response: 445537
 Conc: 2.83 ng/ml



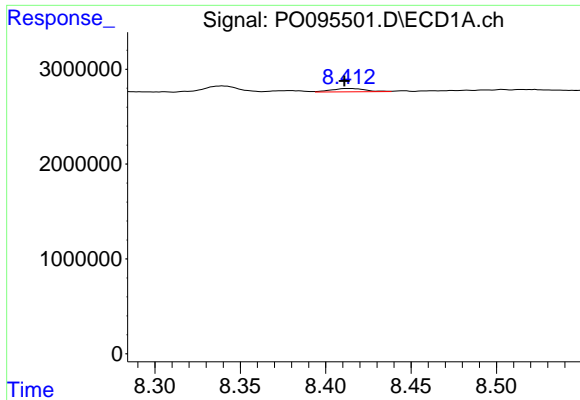
#36 AR-1262-1

R.T.: 7.844 min
 Delta R.T.: -0.013 min
 Response: 1170180
 Conc: 6.34 ng/ml



#36 AR-1262-1

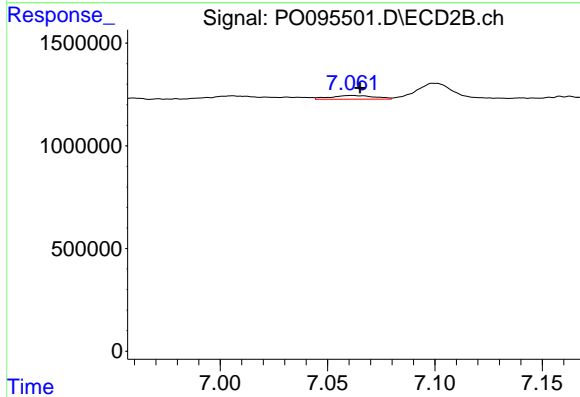
R.T.: 6.855 min
 Delta R.T.: -0.003 min
 Response: 415621
 Conc: 8.98 ng/ml



#37 AR-1262-2

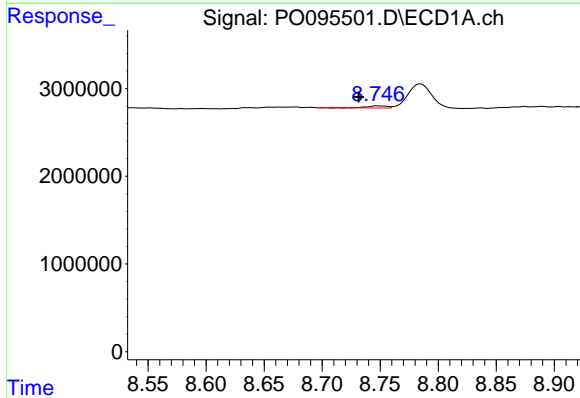
R.T.: 8.413 min
 Delta R.T.: 0.002 min
 Response: 492318
 Conc: 1.54 ng/ml

Instrument :
 ECD_L
 ClientSampleId :



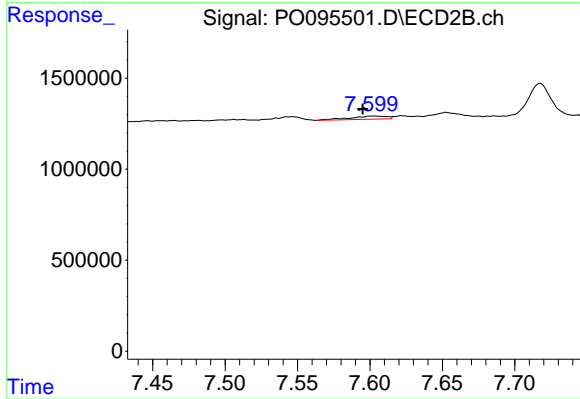
#37 AR-1262-2

R.T.: 7.061 min
 Delta R.T.: -0.004 min
 Response: 263333
 Conc: 2.70 ng/ml



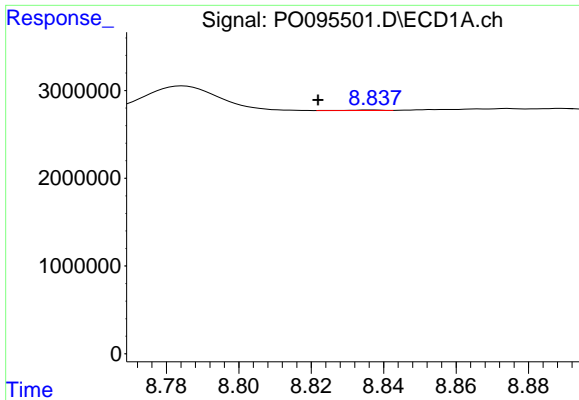
#38 AR-1262-3

R.T.: 8.747 min
 Delta R.T.: 0.015 min
 Response: 266244
 Conc: 1.20 ng/ml



#38 AR-1262-3

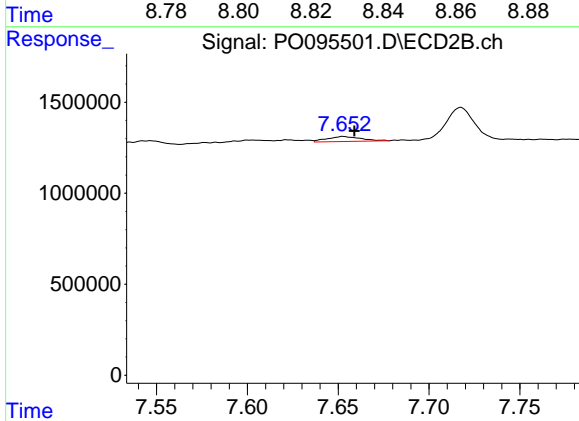
R.T.: 7.601 min
 Delta R.T.: 0.006 min
 Response: 296721
 Conc: 3.87 ng/ml



#39 AR-1262-4

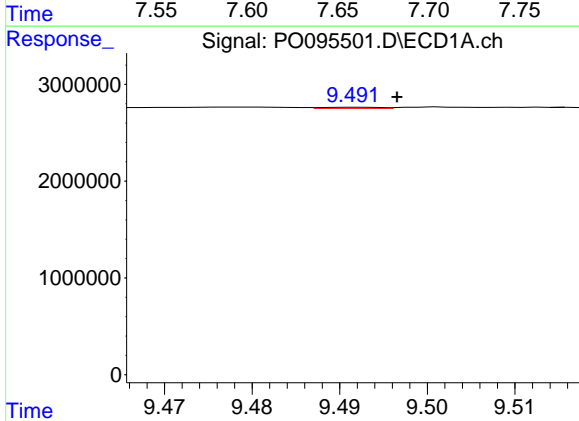
R.T.: 8.837 min
 Delta R.T.: 0.015 min
 Response: 28723
 Conc: 0.24 ng/ml

Instrument :
 ECD_L
 ClientSampleId :



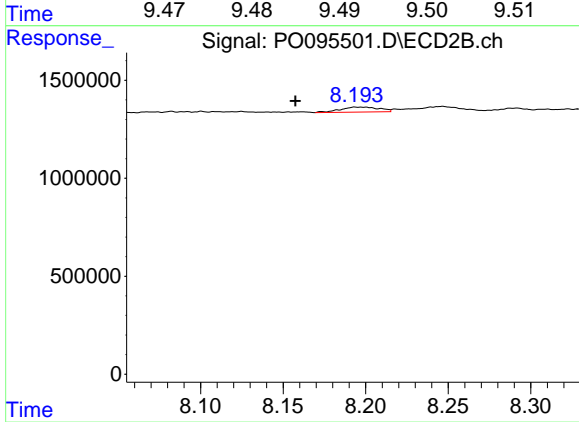
#39 AR-1262-4

R.T.: 7.653 min
 Delta R.T.: -0.006 min
 Response: 359789
 Conc: 2.62 ng/ml



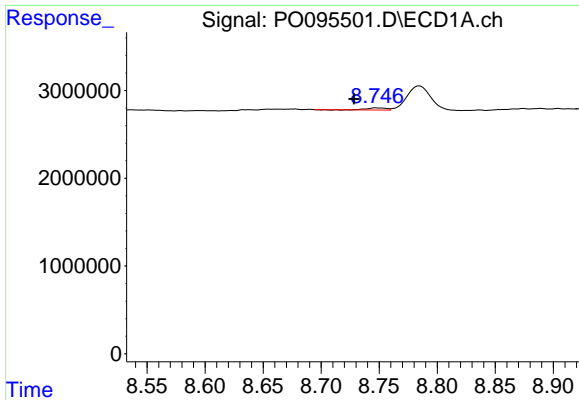
#40 AR-1262-5

R.T.: 9.492 min
 Delta R.T.: -0.005 min
 Response: 53660
 Conc: 0.45 ng/ml



#40 AR-1262-5

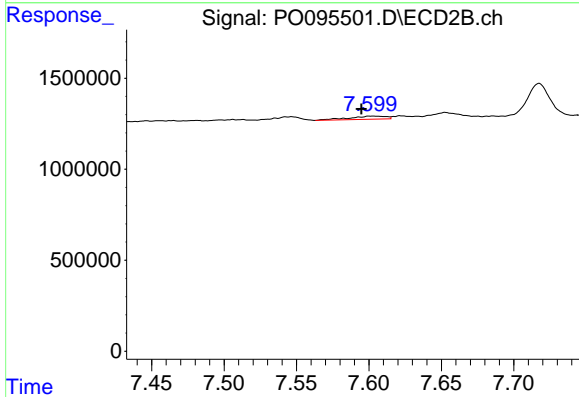
R.T.: 8.194 min
 Delta R.T.: 0.037 min
 Response: 423209
 Conc: 6.65 ng/ml



#41 AR-1268-1

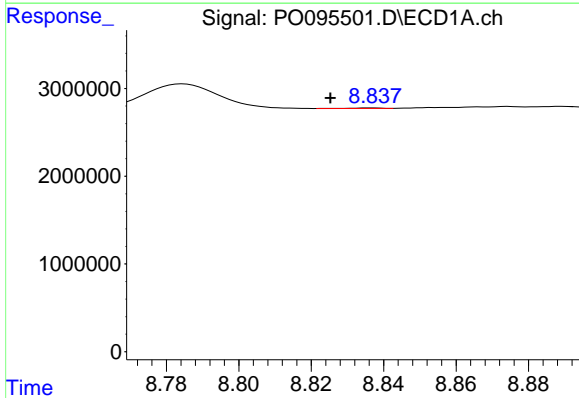
R.T.: 8.747 min
 Delta R.T.: 0.018 min
 Response: 266244
 Conc: 0.72 ng/ml

Instrument :
 ECD_L
 ClientSampleId :



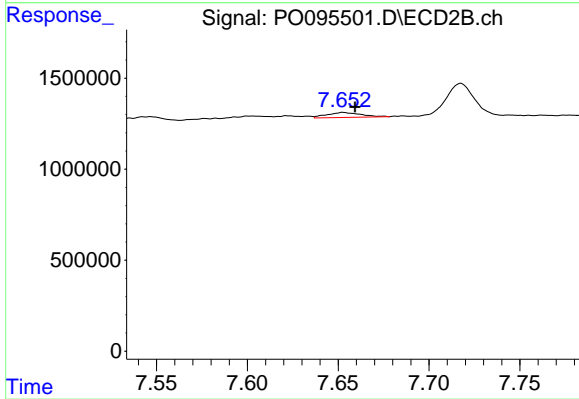
#41 AR-1268-1

R.T.: 7.601 min
 Delta R.T.: 0.006 min
 Response: 296721
 Conc: 1.37 ng/ml



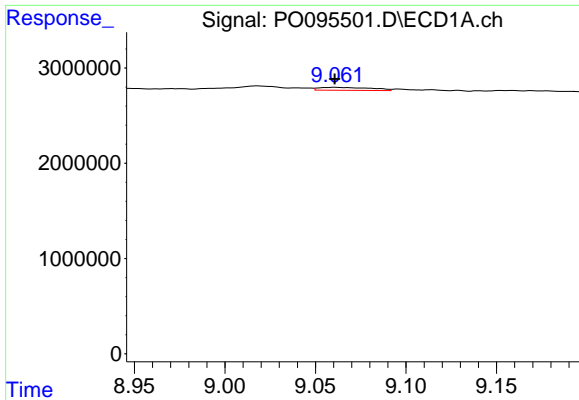
#42 AR-1268-2

R.T.: 8.837 min
 Delta R.T.: 0.011 min
 Response: 28723
 Conc: 0.08 ng/ml



#42 AR-1268-2

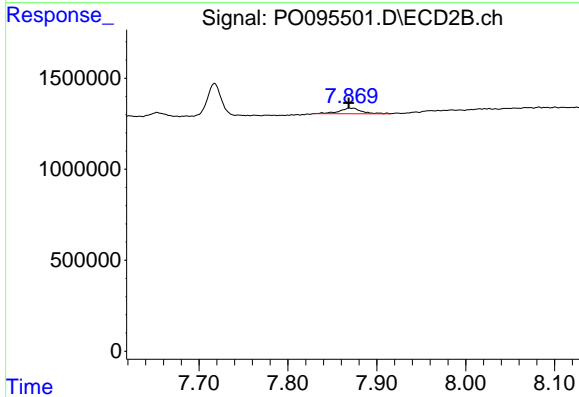
R.T.: 7.653 min
 Delta R.T.: -0.006 min
 Response: 359789
 Conc: 1.88 ng/ml



#43 AR-1268-3

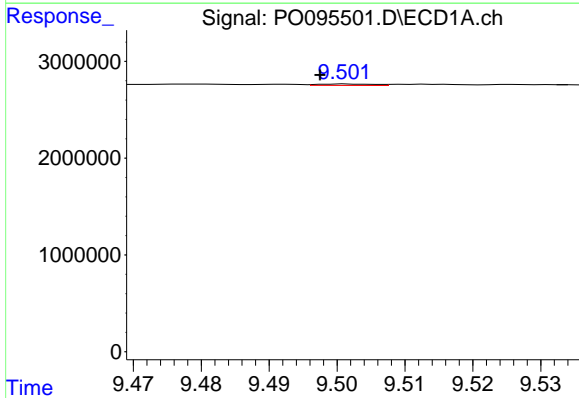
R.T.: 9.061 min
 Delta R.T.: 0.000 min
 Response: 630169
 Conc: 2.18 ng/ml

Instrument :
 ECD_L
 ClientSampleId :



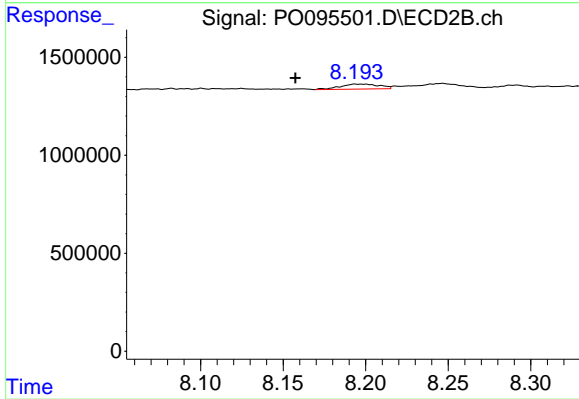
#43 AR-1268-3

R.T.: 7.869 min
 Delta R.T.: 0.000 min
 Response: 537668
 Conc: 3.32 ng/ml



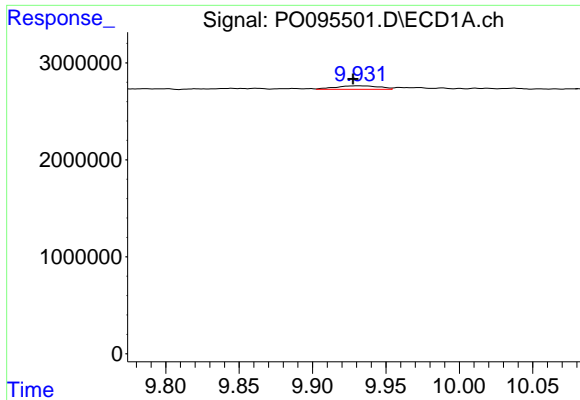
#44 AR-1268-4

R.T.: 9.501 min
 Delta R.T.: 0.004 min
 Response: 85162
 Conc: 0.67 ng/ml



#44 AR-1268-4

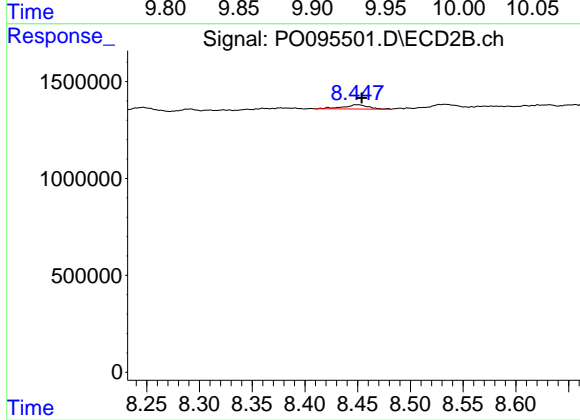
R.T.: 8.194 min
 Delta R.T.: 0.037 min
 Response: 423209
 Conc: 6.15 ng/ml



#45 AR-1268-5

R.T.: 9.932 min
 Delta R.T.: 0.004 min
 Response: 765583
 Conc: 0.81 ng/ml

Instrument :
 ECD_L
 ClientSampleId :



#45 AR-1268-5

R.T.: 8.449 min
 Delta R.T.: -0.005 min
 Response: 368444
 Conc: 0.77 ng/ml