

Data Path : Z:\pestpcbsrv\HPCHEM1\ECD_L\Data\PL060721\
 Data File : PL067143.D
 Signal(s) : Signal #1: ECD1A.ch Signal #2: ECD2B.ch
 Acq On : 07 Jun 2021 14:21
 Operator : AR\AJ
 Sample : M2623-04
 Misc :
 ALS Vial : 10 Sample Multiplier: 1

Instrument :
 ECD_L
 ClientSampleId :
 S-4

Integration File signal 1: autoint1.e
 Integration File signal 2: autoint2.e
 Quant Time: Jun 08 03:20:58 2021
 Quant Method : Z:\pestpcbsrv\HPCHEM1\ECD_L\methods\PL060121.M
 Quant Title : GC Extractables
 QLast Update : Wed Jun 02 14:20:39 2021
 Response via : Initial Calibration
 Integrator: ChemStation

Volume Inj. : 1 µl
 Signal #1 Phase : ZB-MR2 Signal #2 Phase: ZB-MR1
 Signal #1 Info : 30M x 0.32mm x0.2 Signal #2 Info : 30M x 0.32mm x0.5µm

| Compound | RT#1 | RT#2 | Resp#1 | Resp#2 | ng/ml | ng/ml |
|-----------------------------|--------|--------|---------|----------|--------|----------|
| ----- | | | | | | |
| System Monitoring Compounds | | | | | | |
| 1) SA Tetrachlo... | 4.480 | 5.529 | 8353620 | 14511176 | 20.399 | 22.432 |
| 28) SA Decachlor... | 10.221 | 11.426 | 8897261 | 12626935 | 13.759 | 15.134 |
| Target Compounds | | | | | | |
| 3) MA gamma-BHC... | 5.588 | 0.000 | 463078 | 0 | 0.831 | N.D. # |
| 5) MB Aldrin | 6.341 | 0.000 | 397553 | 0 | 0.727 | N.D. # |
| 15) B Endosulfa... | 8.177 | 9.176 | 1090045 | 468764 | 2.104 | 0.760 # |
| 19) B Endosulfa... | 8.591f | 0.000 | 601026 | 0 | 1.088 | N.D. # |
| 21) B Endrin ke... | 0.000 | 10.025 | 0 | 5294299 | N.D. | 7.302 # |
| 23) Chlordane-1 | 0.000 | 6.935f | 0 | 384661 | N.D. | 18.769 # |
| 24) Chlordane-2 | 6.483 | 0.000 | 1294198 | 0 | 59.225 | N.D. # |
| 27) Chlordane-5 | 8.177 | 0.000 | 1090045 | 0 | 57.770 | N.D. # |
| ----- | | | | | | |

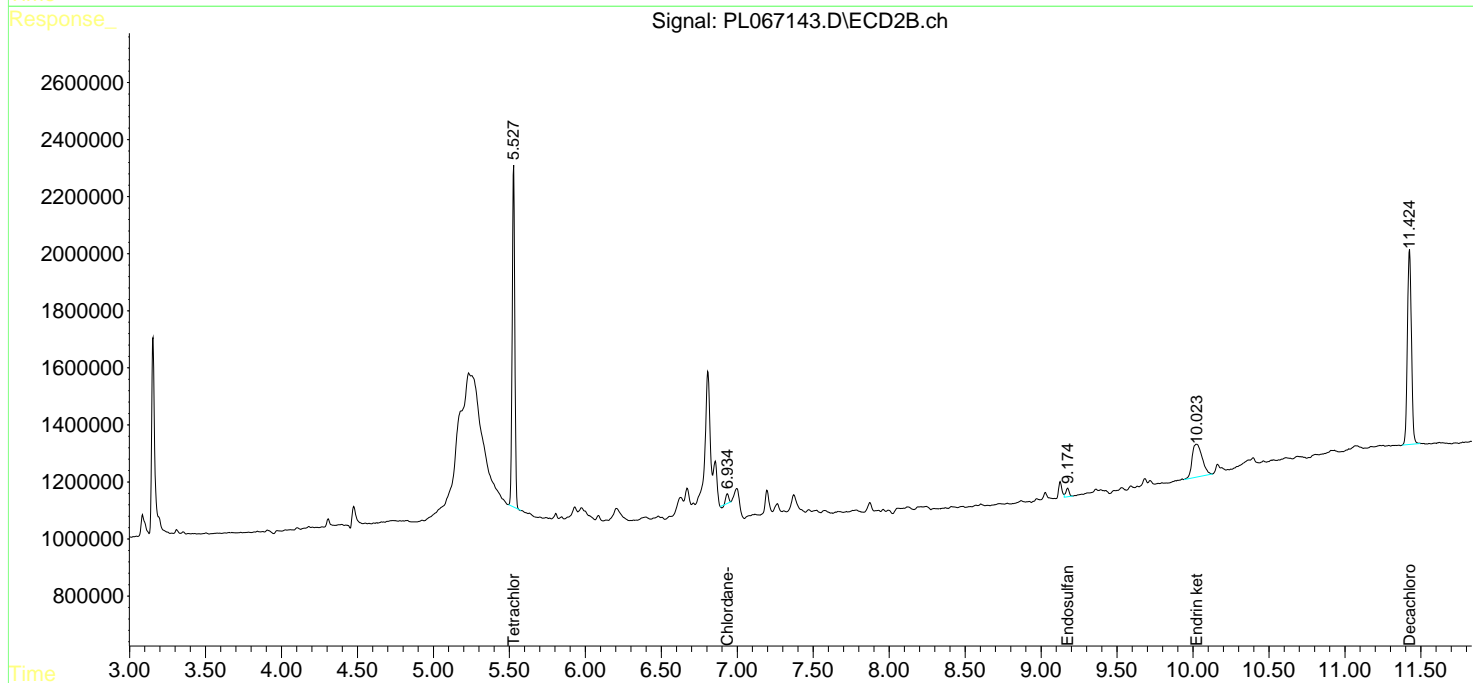
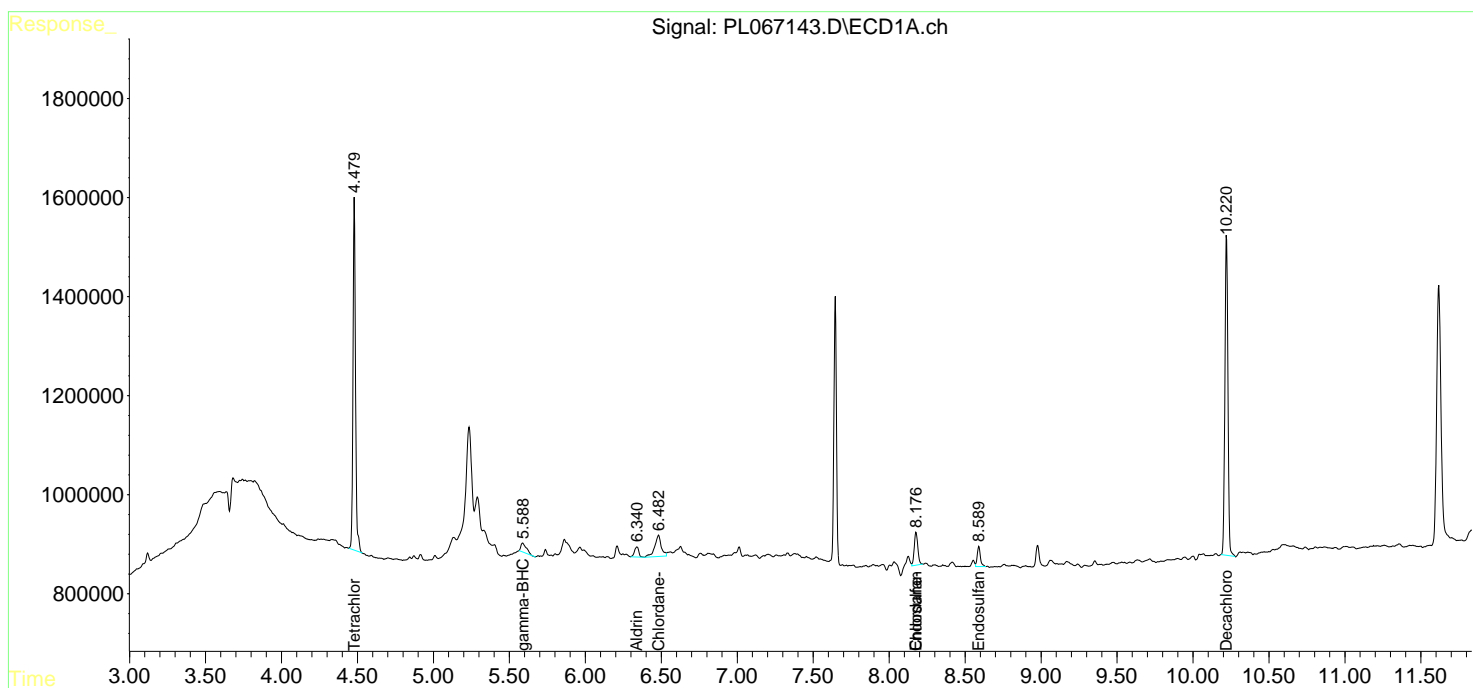
(f)=RT Delta > 1/2 Window (#)=Amounts differ by > 25% (m)=manual int.

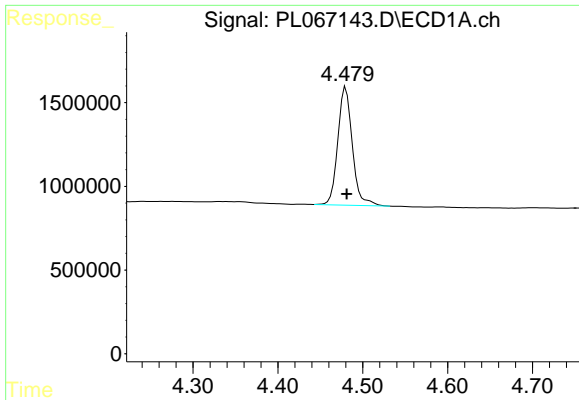
Data Path : Z:\pestpcbsrv\HPCHEM1\ECD_L\Data\PL060721\
 Data File : PL067143.D
 Signal(s) : Signal #1: ECD1A.ch Signal #2: ECD2B.ch
 Acq On : 07 Jun 2021 14:21
 Operator : AR\AJ
 Sample : M2623-04
 Misc :
 ALS Vial : 10 Sample Multiplier: 1

Instrument :
 ECD_L
 ClientSampled :
 S-4

Integration File signal 1: autoint1.e
 Integration File signal 2: autoint2.e
 Quant Time: Jun 08 03:20:58 2021
 Quant Method : Z:\pestpcbsrv\HPCHEM1\ECD_L\methods\PL060121.M
 Quant Title : GC Extractables
 QLast Update : Wed Jun 02 14:20:39 2021
 Response via : Initial Calibration
 Integrator: ChemStation

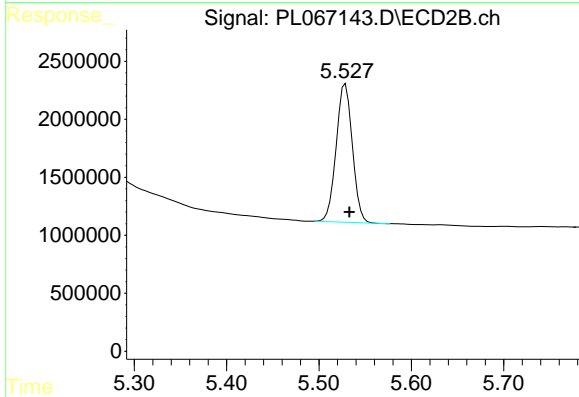
Volume Inj. : 1 µl
 Signal #1 Phase : ZB-MR2 Signal #2 Phase: ZB-MR1
 Signal #1 Info : 30M x 0.32mm x0.2 Signal #2 Info : 30M x 0.32mm x0.5µm



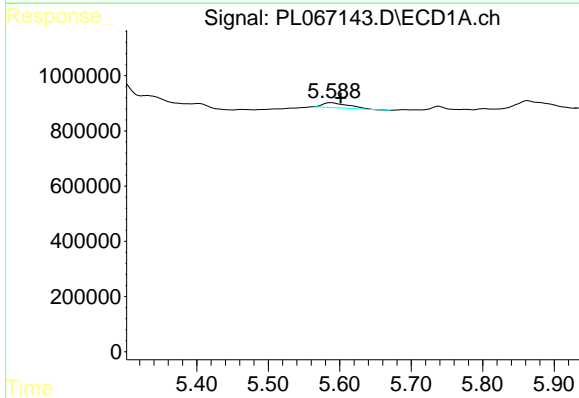


#1 Tetrachloro-m-xylene
 R.T.: 4.480 min
 Delta R.T.: -0.001 min
 Response: 8353620
 Conc: 20.40 ng/ml

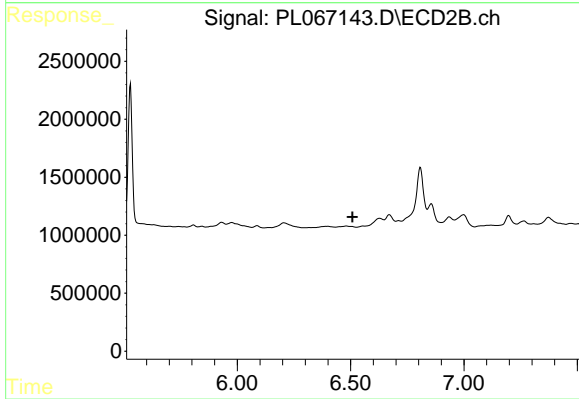
Instrument :
 ECD_L
 ClientSampled :
 S-4



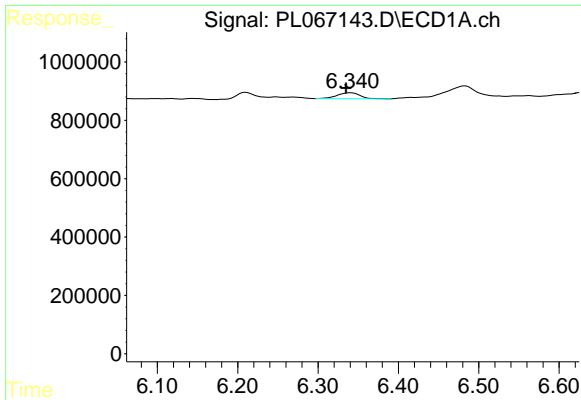
#1 Tetrachloro-m-xylene
 R.T.: 5.529 min
 Delta R.T.: -0.004 min
 Response: 14511176
 Conc: 22.43 ng/ml



#3 gamma-BHC (Lindane)
 R.T.: 5.588 min
 Delta R.T.: -0.013 min
 Response: 463078
 Conc: 0.83 ng/ml

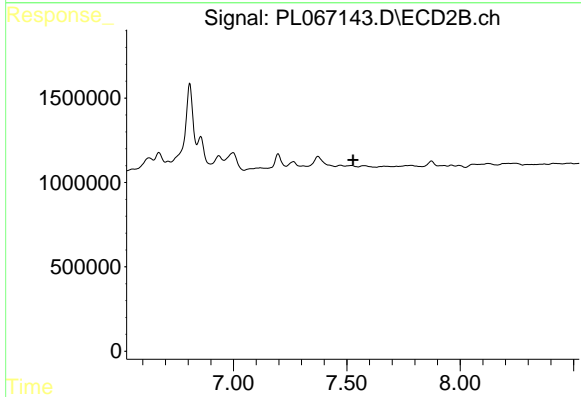


#3 gamma-BHC (Lindane)
 R.T.: 0.000 min
 Exp R.T. : 6.509 min
 Response: 0
 Conc: N.D.

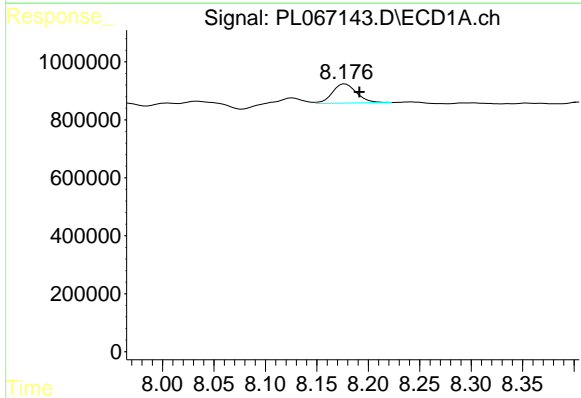


#5 Aldrin
 R.T.: 6.341 min
 Delta R.T.: 0.006 min
 Response: 397553
 Conc: 0.73 ng/ml

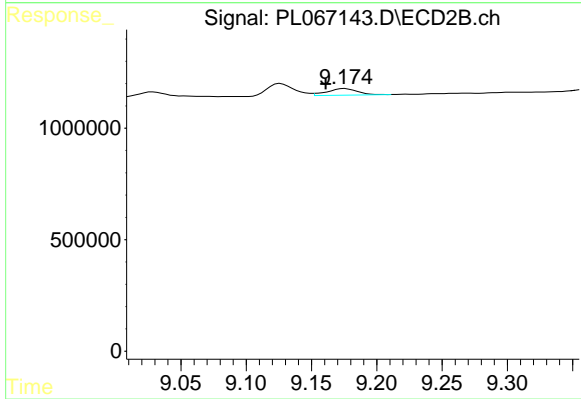
Instrument :
 ECD_L
 ClientSampled :
 S-4



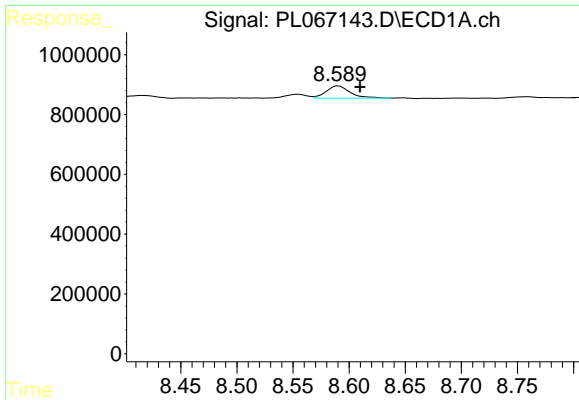
#5 Aldrin
 R.T.: 0.000 min
 Exp R.T. : 7.527 min
 Response: 0
 Conc: N.D.



#15 Endosulfan II
 R.T.: 8.177 min
 Delta R.T.: -0.014 min
 Response: 1090045
 Conc: 2.10 ng/ml

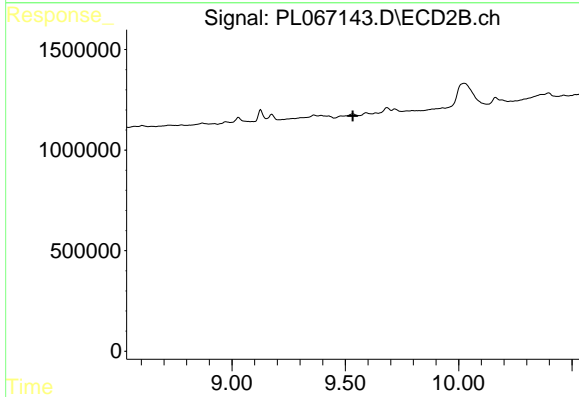


#15 Endosulfan II
 R.T.: 9.176 min
 Delta R.T.: 0.015 min
 Response: 468764
 Conc: 0.76 ng/ml

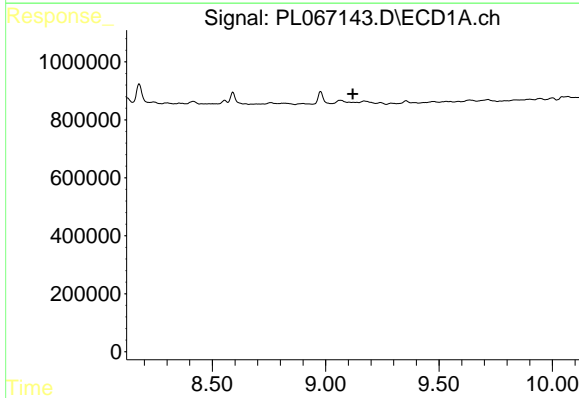


#19 Endosulfan Sulfate
 R.T.: 8.591 min
 Delta R.T.: -0.019 min
 Response: 601026
 Conc: 1.09 ng/ml

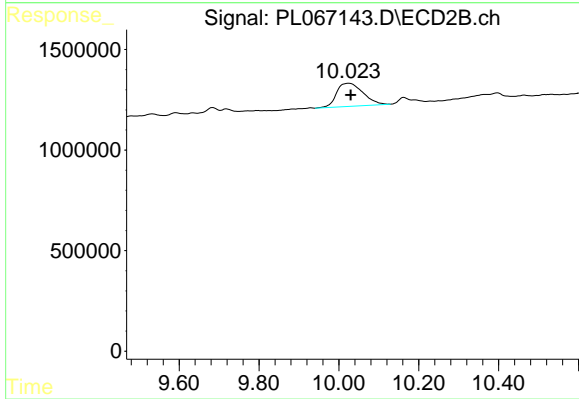
Instrument :
 ECD_L
 ClientSampled :
 S-4



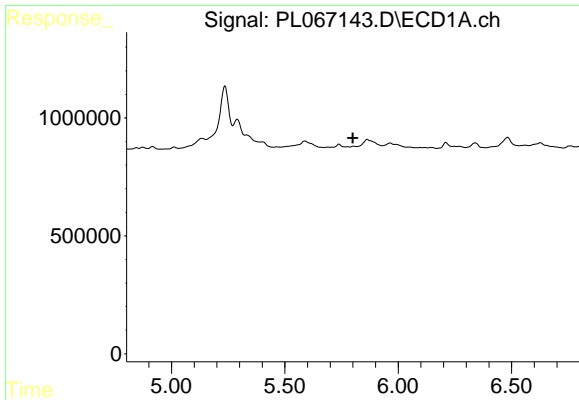
#19 Endosulfan Sulfate
 R.T.: 0.000 min
 Exp R.T. : 9.533 min
 Response: 0
 Conc: N.D.



#21 Endrin ketone
 R.T.: 0.000 min
 Exp R.T. : 9.119 min
 Response: 0
 Conc: N.D.

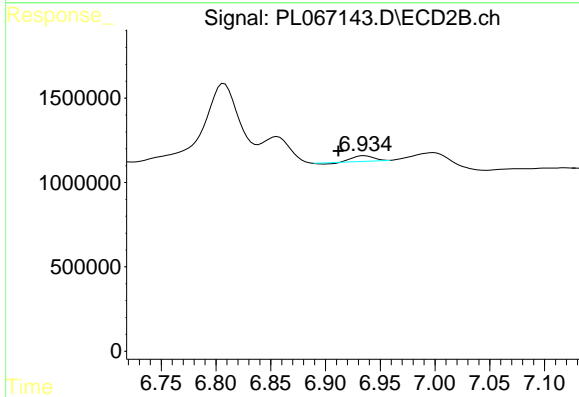


#21 Endrin ketone
 R.T.: 10.025 min
 Delta R.T.: -0.005 min
 Response: 5294299
 Conc: 7.30 ng/ml

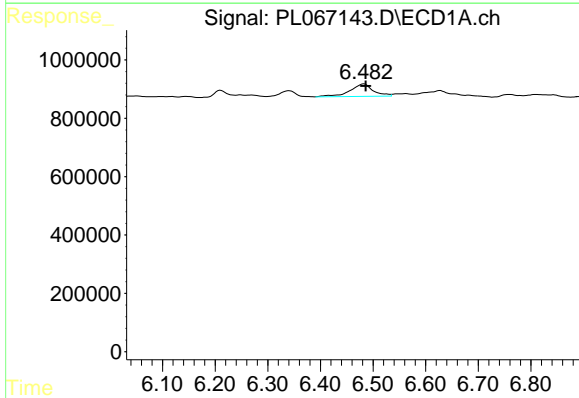


#23 Chlordane-1
 R.T.: 0.000 min
 Exp R.T.: 5.800 min
 Response: 0
 Conc: N.D.

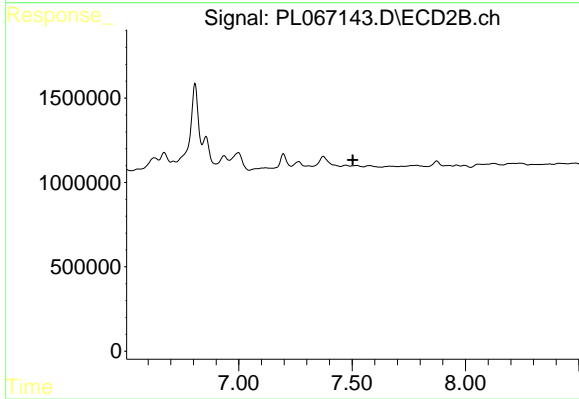
Instrument :
 ECD_L
 ClientSampled :
 S-4



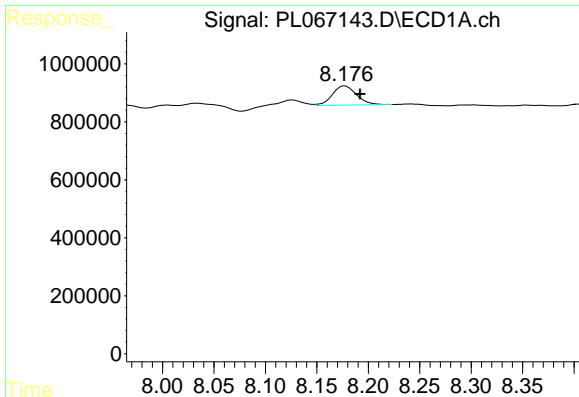
#23 Chlordane-1
 R.T.: 6.935 min
 Delta R.T.: 0.023 min
 Response: 384661
 Conc: 18.77 ng/ml



#24 Chlordane-2
 R.T.: 6.483 min
 Delta R.T.: -0.003 min
 Response: 1294198
 Conc: 59.22 ng/ml



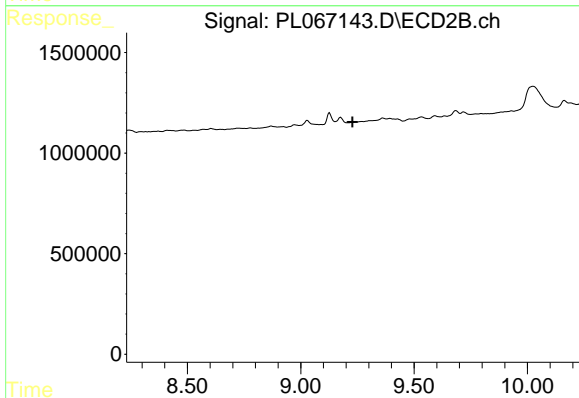
#24 Chlordane-2
 R.T.: 0.000 min
 Exp R.T.: 7.503 min
 Response: 0
 Conc: N.D.



#27 Chlordane-5

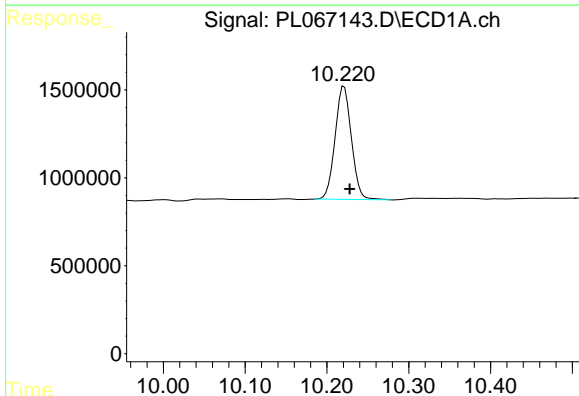
R.T.: 8.177 min
 Delta R.T.: -0.014 min
 Response: 1090045
 Conc: 57.77 ng/ml

Instrument :
 ECD_L
 ClientSampled :
 S-4



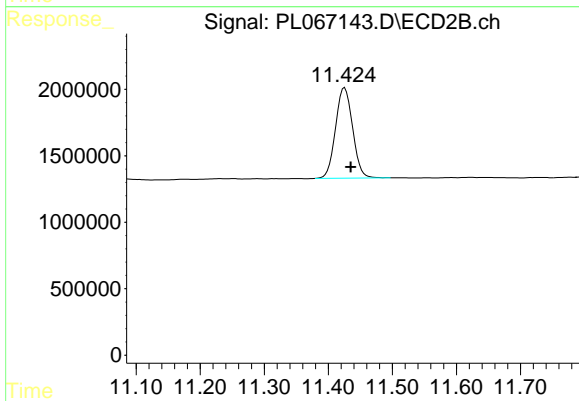
#27 Chlordane-5

R.T.: 0.000 min
 Exp R.T. : 9.229 min
 Response: 0
 Conc: N.D.



#28 Decachlorobiphenyl

R.T.: 10.221 min
 Delta R.T.: -0.007 min
 Response: 8897261
 Conc: 13.76 ng/ml



#28 Decachlorobiphenyl

R.T.: 11.426 min
 Delta R.T.: -0.009 min
 Response: 12626935
 Conc: 15.13 ng/ml