

Data Path : Z:\pestpcbsrv\HPCHEM1\ECD_L\Data\PL060823\
 Data File : PL083314.D
 Signal(s) : Signal #1: ECD1A.ch Signal #2: ECD2B.ch
 Acq On : 08 Jun 2023 11:19
 Operator : AR\AJ
 Sample : 03047-02MSD
 Misc :
 ALS Vial : 6 Sample Multiplier: 1

Instrument :
 ECD_L
 ClientSampleId :

Integration File signal 1: autoint1.e
 Integration File signal 2: autoint2.e
 Quant Time: Jun 08 21:32:16 2023
 Quant Method : Z:\pestpcbsrv\HPCHEM1\ECD_L\methods\PL051923.M
 Quant Title : GC Extractables
 QLast Update : Sat May 20 04:58:53 2023
 Response via : Initial Calibration
 Integrator: ChemStation

Volume Inj. : 1 µl
 Signal #1 Phase : ZB-MR2 Signal #2 Phase: ZB-MR1
 Signal #1 Info : 30M x 0.32mm x0.2 Signal #2 Info : 30M x 0.32mm x0.5µm

Compound	RT#1	RT#2	Resp#1	Resp#2	ng/ml	ng/ml

System Monitoring Compounds						
1) SA Tetrachlo...	3.318	2.631	58167120	46893755	19.791	18.063
28) SA Decachlor...	8.737	7.738	34409532	39812734	16.406	16.011
Target Compounds						
2) A alpha-BHC	3.768	3.128	222.9E6	176.0E6	50.208	47.173
3) MA gamma-BHC...	4.096	3.454	209.1E6	164.9E6	50.471	49.468
4) MA Heptachlor	4.674	3.785	203.2E6	178.9E6	53.152	48.854
5) MB Aldrin	5.010	4.061	194.0E6	166.1E6	55.142	51.038
6) B beta-BHC	4.301	3.756	92662240	69749256	49.217	48.773
7) B delta-BHC	4.542	3.981	159.3E6	122.4E6	46.323	37.346
8) B Heptachlo...	5.437	4.562	173.3E6	151.9E6	54.163	51.182
9) A Endosulfan I	5.818	4.930	165.5E6	142.6E6	55.150	51.021
10) B gamma-Chl...	5.691	4.812	180.0E6	155.9E6	56.672	51.913
11) B alpha-Chl...	5.769	4.874	175.7E6	155.0E6	54.741	51.624
12) B 4,4'-DDE	5.949	5.065	151.9E6	132.4E6	55.097	54.527
13) MA Dieldrin	6.092	5.194	164.5E6	146.8E6	54.705	52.008
14) MA Endrin	6.319	5.468	135.7E6	125.5E6	50.499	49.476
15) B Endosulfa...	6.543	5.765	130.3E6	125.4E6	49.186	50.669
16) A 4,4'-DDD	6.465	5.620	131.7E6	114.2E6	60.625	59.355
17) MA 4,4'-DDT	6.775	5.867	122.7E6	107.4E6	49.031	48.157
18) B Endrin al...	6.673	5.945	111.3E6	101.5E6	55.334	51.319
19) B Endosulfa...	6.907	6.168	132.8E6	124.0E6	51.795	50.636
20) A Methoxychlor	7.257	6.447	64066503	61579667	48.448	48.421
21) B Endrin ke...	7.386	6.672	147.2E6	145.2E6	57.709	53.684
22) Mirex	7.850	6.843	111.3E6	118.1E6	53.089	50.480
23) Chlordane-1	0.000	3.637f	0	602700	N.D.	7.304 #
24) Chlordane-2	5.010f	4.204	194.0E6	-40363	1761.072	N.D. #
25) Chlordane-3	5.691	4.812	180.0E6	155.9E6	433.948	585.038 #
26) Chlordane-4	5.769	4.874	175.7E6	155.0E6	346.940	550.041 #
27) Chlordane-5	0.000	5.765	0	125.4E6	N.D.	1290.488 #

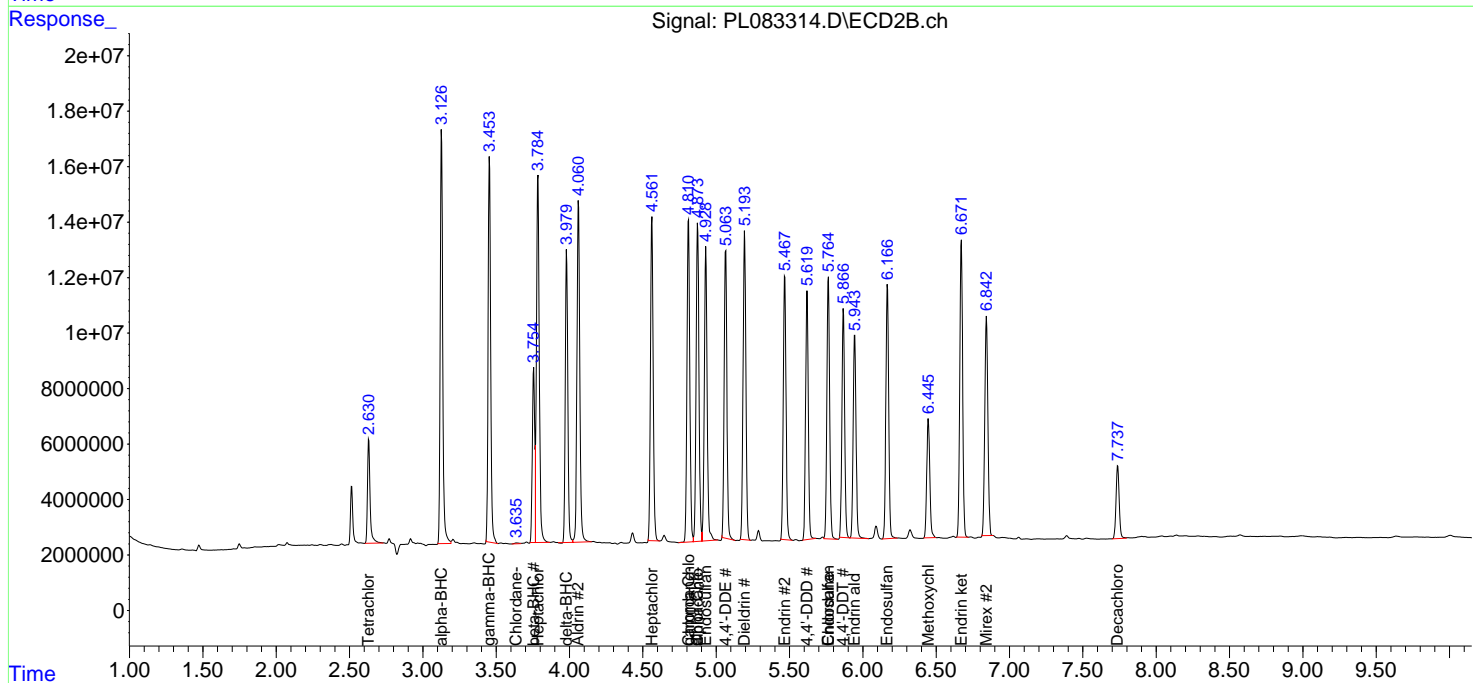
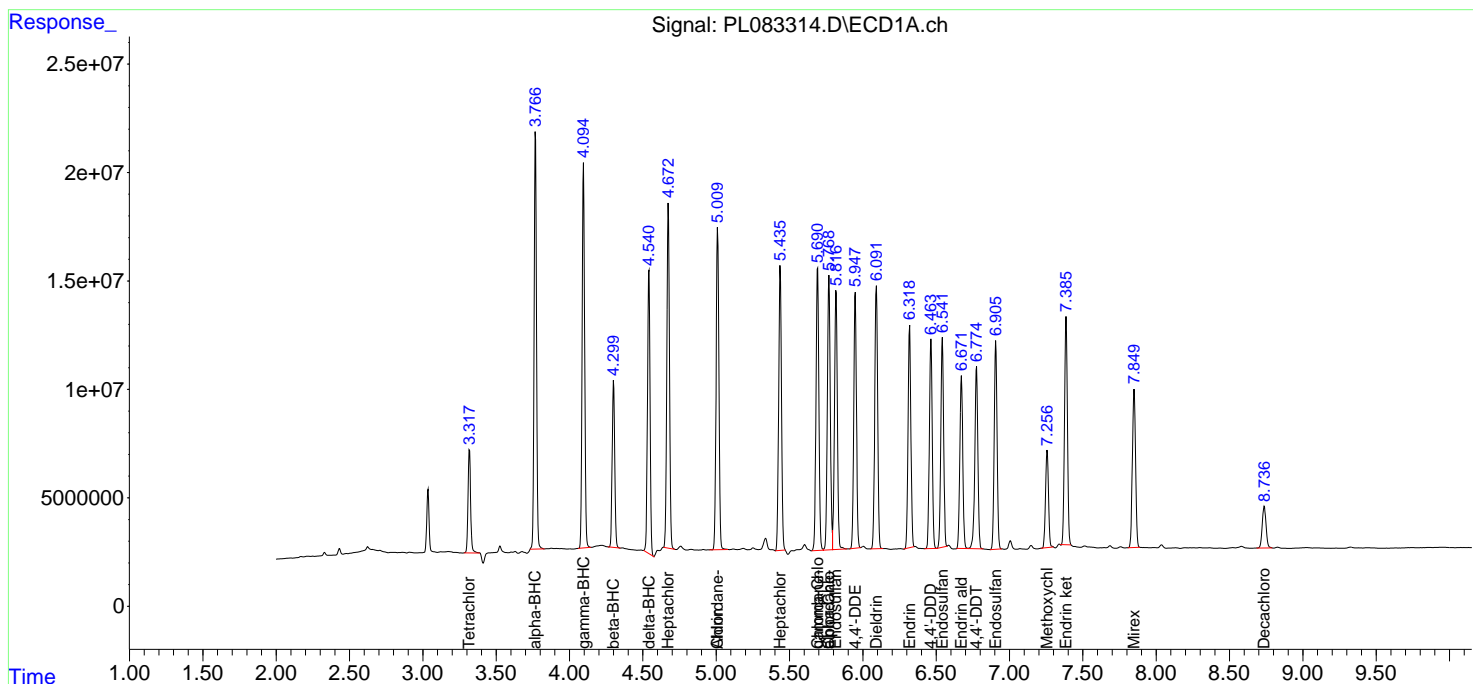
(f)=RT Delta > 1/2 Window (#)=Amounts differ by > 25% (m)=manual int.

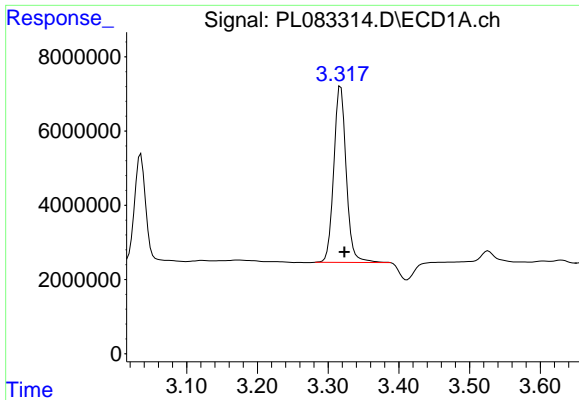
Data Path : Z:\pestpcbsrv\HPCHEM1\ECD_L\Data\PL060823\
 Data File : PL083314.D
 Signal(s) : Signal #1: ECD1A.ch Signal #2: ECD2B.ch
 Acq On : 08 Jun 2023 11:19
 Operator : AR\AJ
 Sample : 03047-02MSD
 Misc :
 ALS Vial : 6 Sample Multiplier: 1

Instrument :
 ECD_L
 ClientSampleId :

Integration File signal 1: autoint1.e
 Integration File signal 2: autoint2.e
 Quant Time: Jun 08 21:32:16 2023
 Quant Method : Z:\pestpcbsrv\HPCHEM1\ECD_L\methods\PL051923.M
 Quant Title : GC Extractables
 QLast Update : Sat May 20 04:58:53 2023
 Response via : Initial Calibration
 Integrator: ChemStation

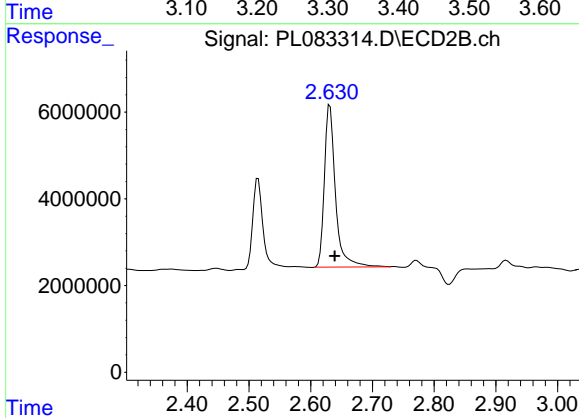
Volume Inj. : 1 µl
 Signal #1 Phase : ZB-MR2 Signal #2 Phase: ZB-MR1
 Signal #1 Info : 30M x 0.32mm x0.2 Signal #2 Info : 30M x 0.32mm x0.5µm



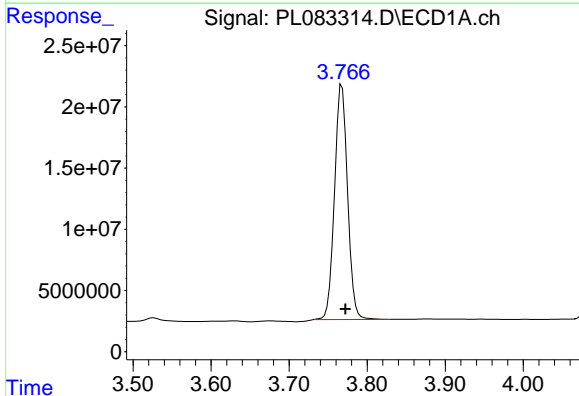


#1 Tetrachloro-m-xylene
R.T.: 3.318 min
Delta R.T.: -0.005 min
Response: 58167120
Conc: 19.79 ng/ml

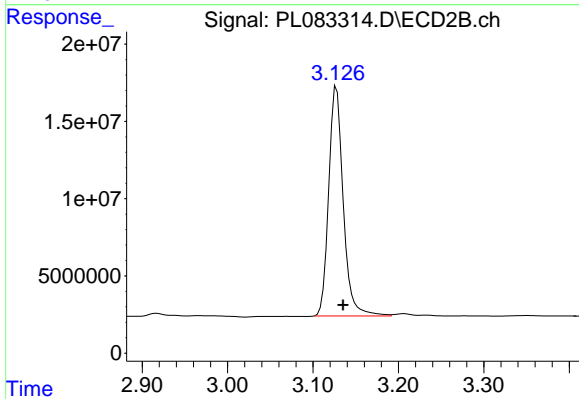
Instrument :
ECD_L
ClientSampleId :



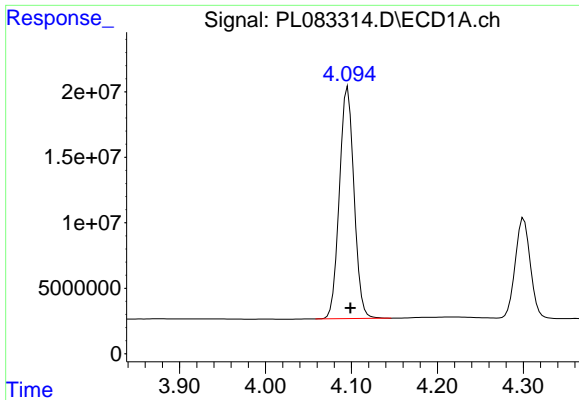
#1 Tetrachloro-m-xylene
R.T.: 2.631 min
Delta R.T.: -0.008 min
Response: 46893755
Conc: 18.06 ng/ml



#2 alpha-BHC
R.T.: 3.768 min
Delta R.T.: -0.004 min
Response: 222885139
Conc: 50.21 ng/ml

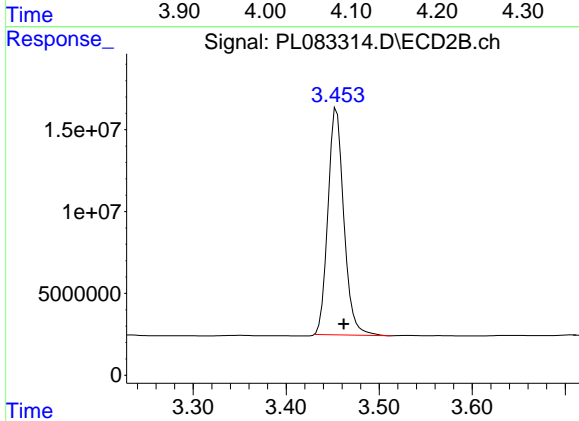


#2 alpha-BHC
R.T.: 3.128 min
Delta R.T.: -0.008 min
Response: 176023858
Conc: 47.17 ng/ml

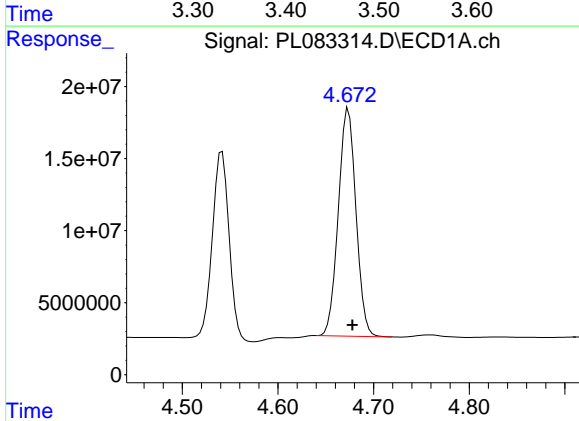


#3 gamma-BHC (Lindane)
 R.T.: 4.096 min
 Delta R.T.: -0.003 min
 Response: 209097255
 Conc: 50.47 ng/ml

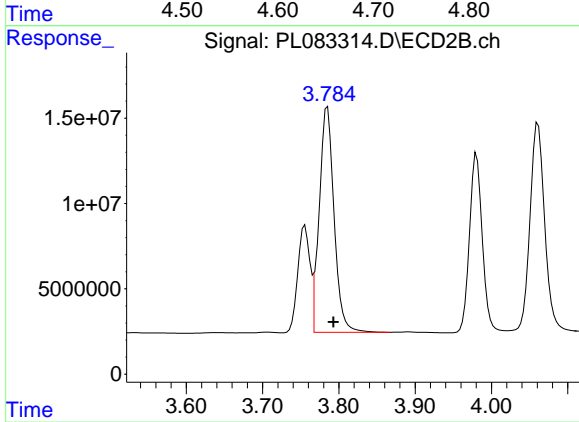
Instrument :
 ECD_L
 ClientSampleId :



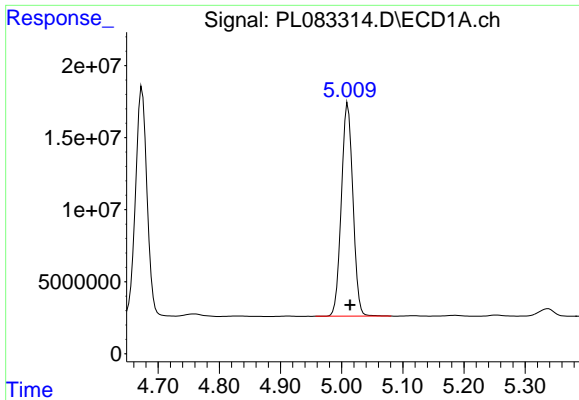
#3 gamma-BHC (Lindane)
 R.T.: 3.454 min
 Delta R.T.: -0.008 min
 Response: 164891552
 Conc: 49.47 ng/ml



#4 Heptachlor
 R.T.: 4.674 min
 Delta R.T.: -0.004 min
 Response: 203173387
 Conc: 53.15 ng/ml



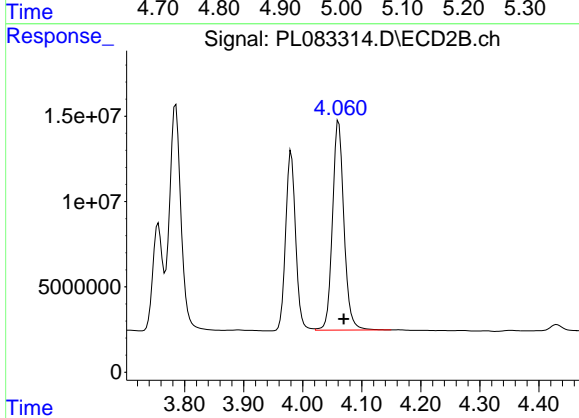
#4 Heptachlor
 R.T.: 3.785 min
 Delta R.T.: -0.008 min
 Response: 178859284
 Conc: 48.85 ng/ml



#5 Aldrin

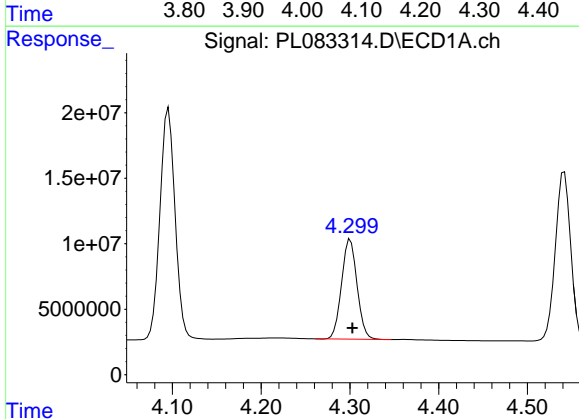
R.T.: 5.010 min
 Delta R.T.: -0.004 min
 Response: 193996390
 Conc: 55.14 ng/ml

Instrument :
 ECD_L
 ClientSampleId :



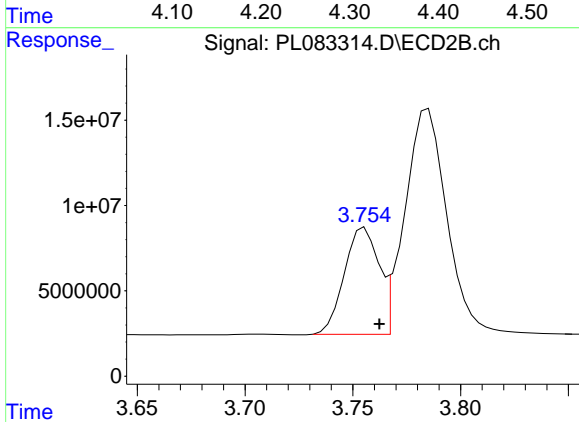
#5 Aldrin

R.T.: 4.061 min
 Delta R.T.: -0.009 min
 Response: 166059579
 Conc: 51.04 ng/ml



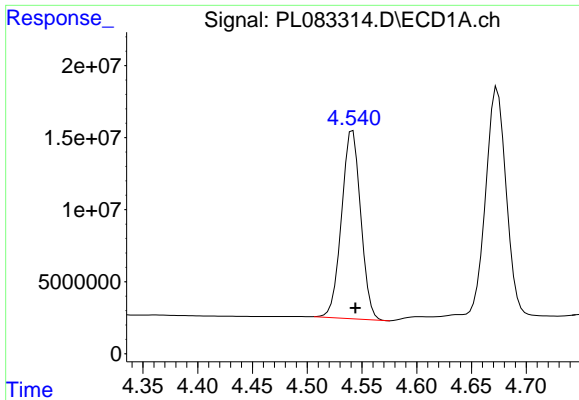
#6 beta-BHC

R.T.: 4.301 min
 Delta R.T.: -0.002 min
 Response: 92662240
 Conc: 49.22 ng/ml



#6 beta-BHC

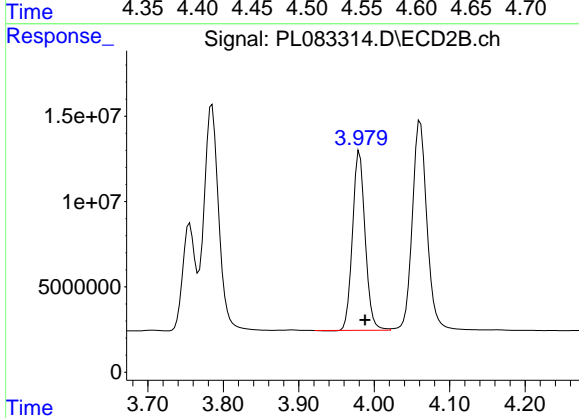
R.T.: 3.756 min
 Delta R.T.: -0.007 min
 Response: 69749256
 Conc: 48.77 ng/ml



#7 delta-BHC

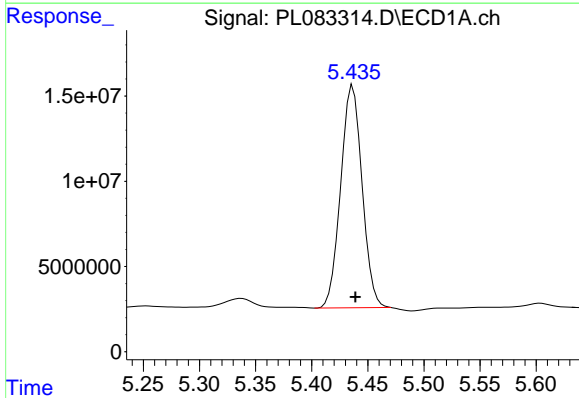
R.T.: 4.542 min
Delta R.T.: -0.002 min
Response: 159299602
Conc: 46.32 ng/ml

Instrument :
ECD_L
ClientSampleId :



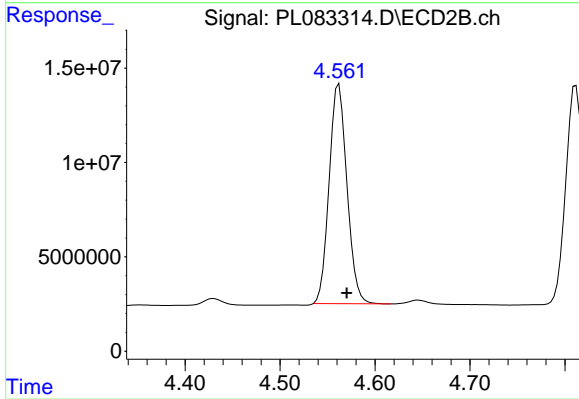
#7 delta-BHC

R.T.: 3.981 min
Delta R.T.: -0.007 min
Response: 122362134
Conc: 37.35 ng/ml



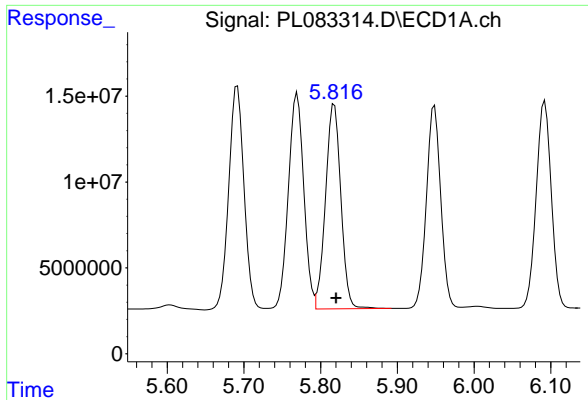
#8 Heptachlor epoxide

R.T.: 5.437 min
Delta R.T.: -0.002 min
Response: 173251755
Conc: 54.16 ng/ml



#8 Heptachlor epoxide

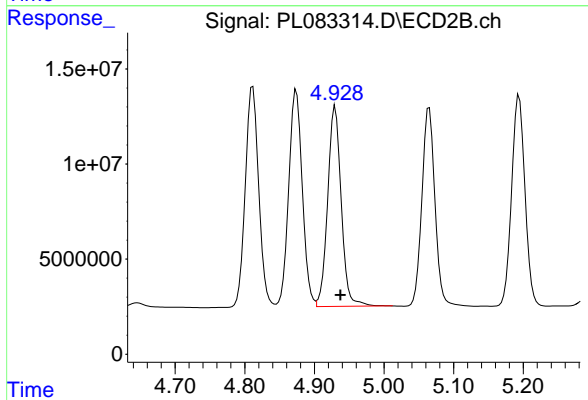
R.T.: 4.562 min
Delta R.T.: -0.008 min
Response: 151901714
Conc: 51.18 ng/ml



#9 Endosulfan I

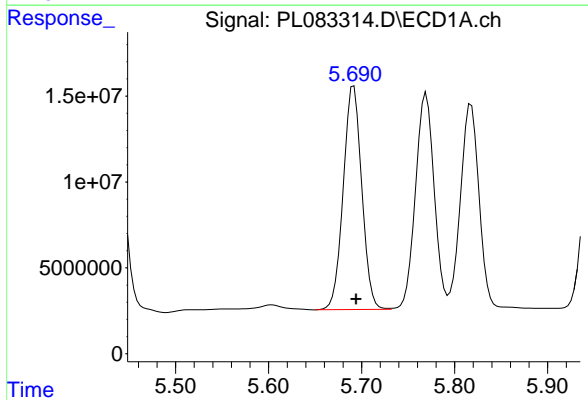
R.T.: 5.818 min
 Delta R.T.: -0.002 min
 Response: 165482301
 Conc: 55.15 ng/ml

Instrument :
 ECD_L
 ClientSampleId :



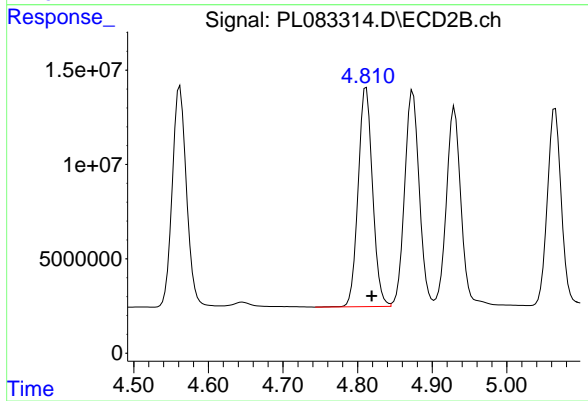
#9 Endosulfan I

R.T.: 4.930 min
 Delta R.T.: -0.007 min
 Response: 142571749
 Conc: 51.02 ng/ml



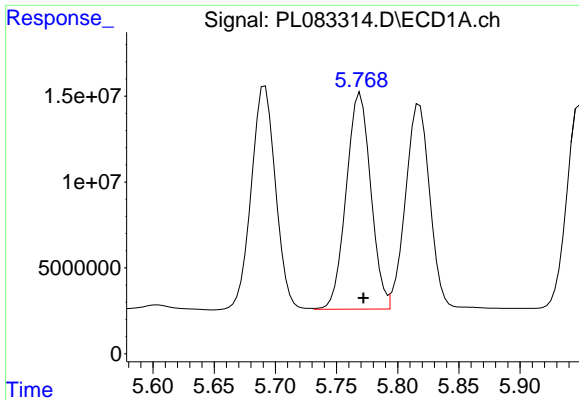
#10 gamma-Chlordane

R.T.: 5.691 min
 Delta R.T.: -0.003 min
 Response: 180046388
 Conc: 56.67 ng/ml



#10 gamma-Chlordane

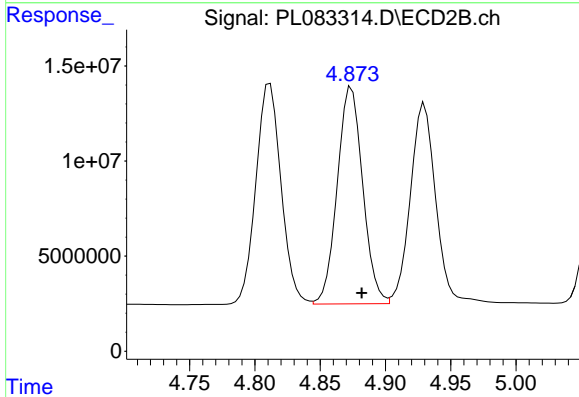
R.T.: 4.812 min
 Delta R.T.: -0.008 min
 Response: 155915379
 Conc: 51.91 ng/ml



#11 alpha-Chlordane

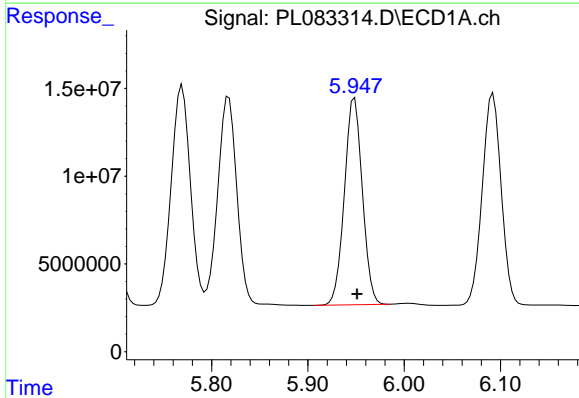
R.T.: 5.769 min
 Delta R.T.: -0.003 min
 Response: 175682308
 Conc: 54.74 ng/ml

Instrument :
 ECD_L
 ClientSampleId :



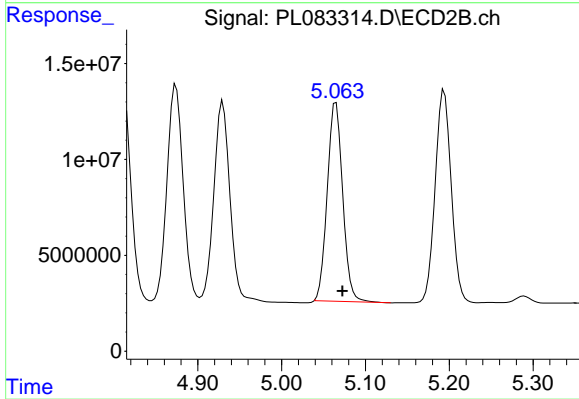
#11 alpha-Chlordane

R.T.: 4.874 min
 Delta R.T.: -0.008 min
 Response: 154974771
 Conc: 51.62 ng/ml



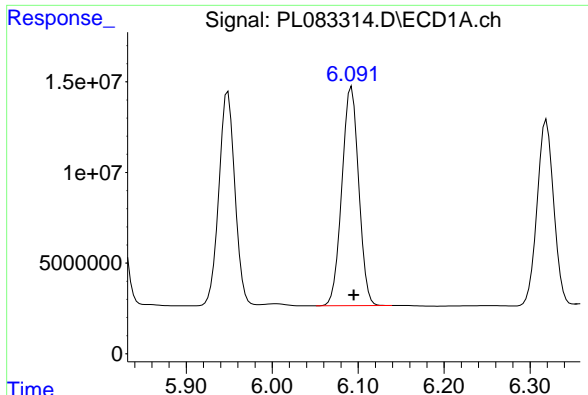
#12 4,4'-DDE

R.T.: 5.949 min
 Delta R.T.: -0.002 min
 Response: 151875459
 Conc: 55.10 ng/ml



#12 4,4'-DDE

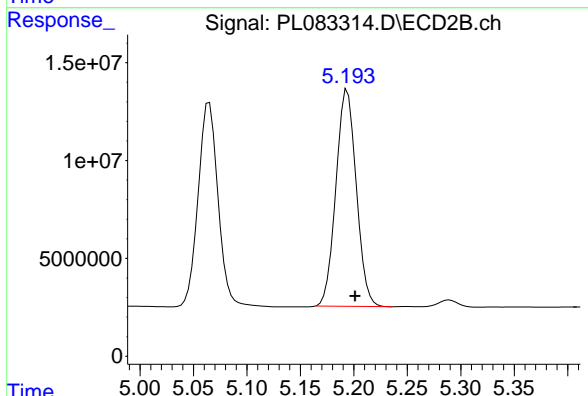
R.T.: 5.065 min
 Delta R.T.: -0.008 min
 Response: 132433816
 Conc: 54.53 ng/ml



#13 Dieldrin

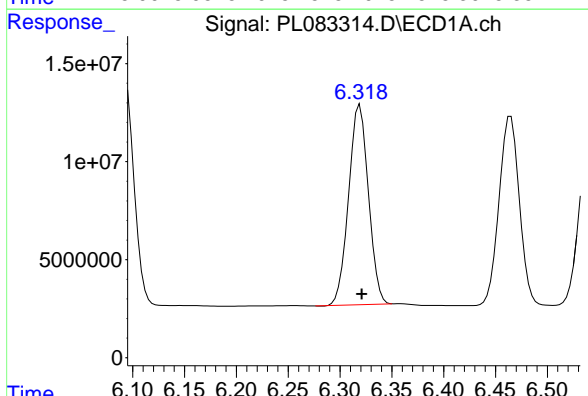
R.T.: 6.092 min
 Delta R.T.: -0.003 min
 Response: 164542838
 Conc: 54.70 ng/ml

Instrument :
 ECD_L
 ClientSampleId :



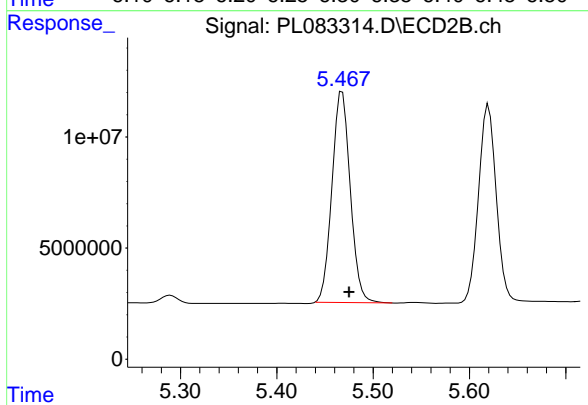
#13 Dieldrin

R.T.: 5.194 min
 Delta R.T.: -0.007 min
 Response: 146815509
 Conc: 52.01 ng/ml



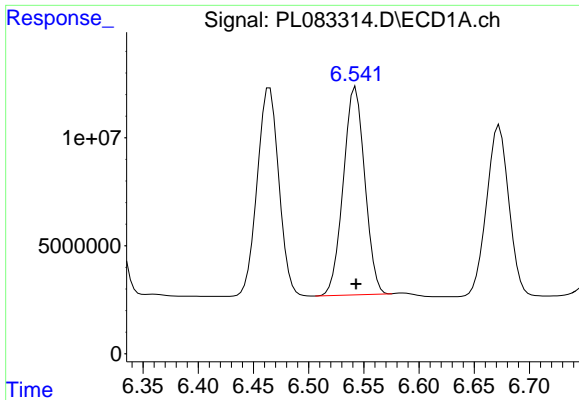
#14 Endrin

R.T.: 6.319 min
 Delta R.T.: -0.002 min
 Response: 135704184
 Conc: 50.50 ng/ml



#14 Endrin

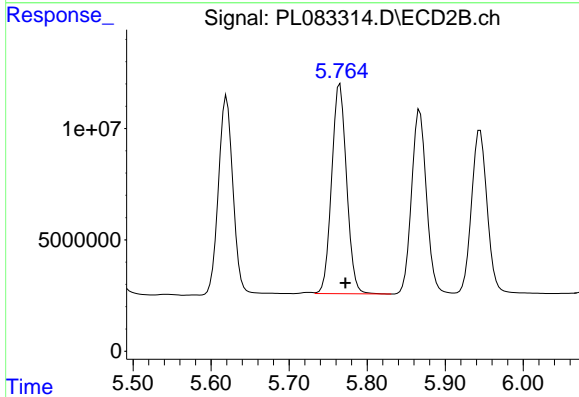
R.T.: 5.468 min
 Delta R.T.: -0.007 min
 Response: 125517633
 Conc: 49.48 ng/ml



#15 Endosulfan II

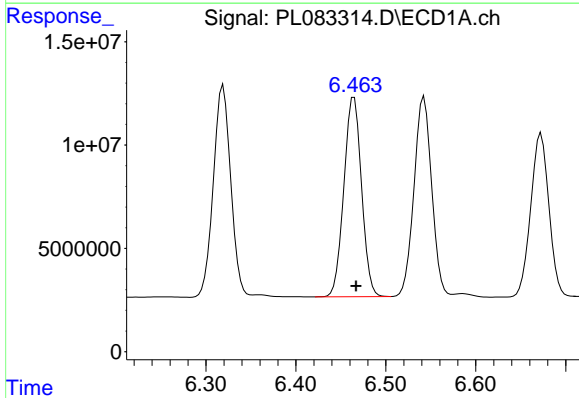
R.T.: 6.543 min
 Delta R.T.: 0.000 min
 Response: 130251173
 Conc: 49.19 ng/ml

Instrument :
 ECD_L
 ClientSampleId :



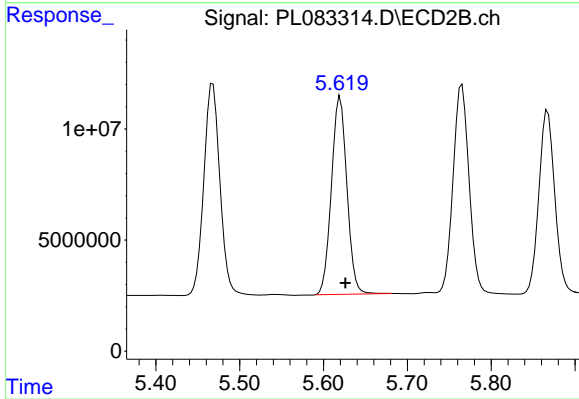
#15 Endosulfan II

R.T.: 5.765 min
 Delta R.T.: -0.007 min
 Response: 125366067
 Conc: 50.67 ng/ml



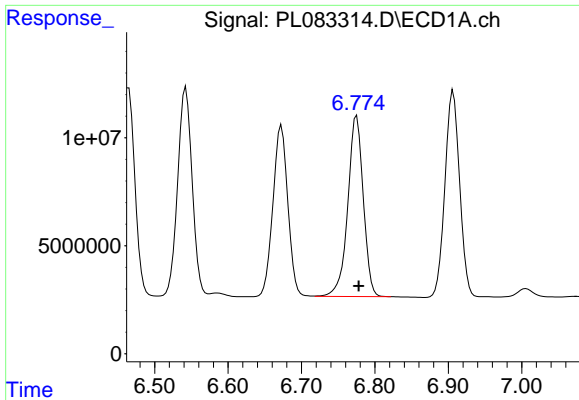
#16 4,4'-DDD

R.T.: 6.465 min
 Delta R.T.: -0.002 min
 Response: 131741335
 Conc: 60.62 ng/ml



#16 4,4'-DDD

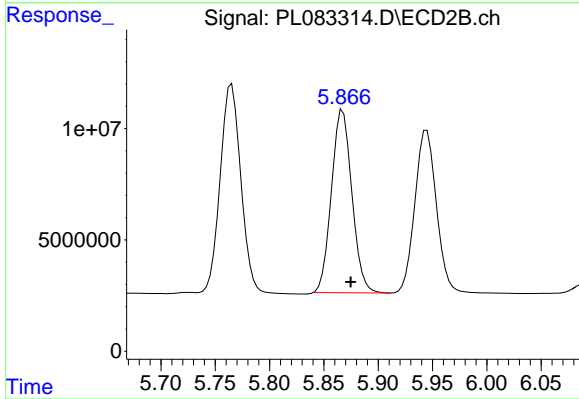
R.T.: 5.620 min
 Delta R.T.: -0.006 min
 Response: 114153688
 Conc: 59.36 ng/ml



#17 4,4'-DDT

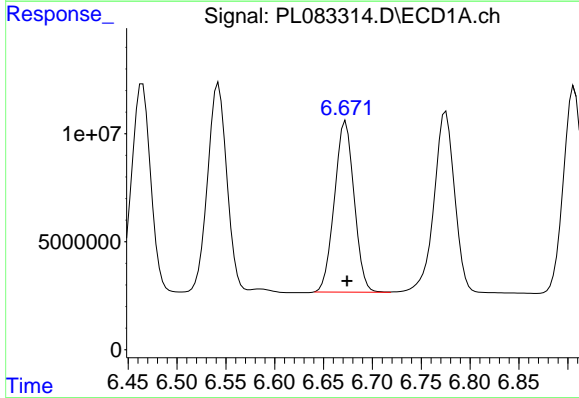
R.T.: 6.775 min
 Delta R.T.: -0.003 min
 Response: 122733154
 Conc: 49.03 ng/ml

Instrument :
 ECD_L
 ClientSampleId :



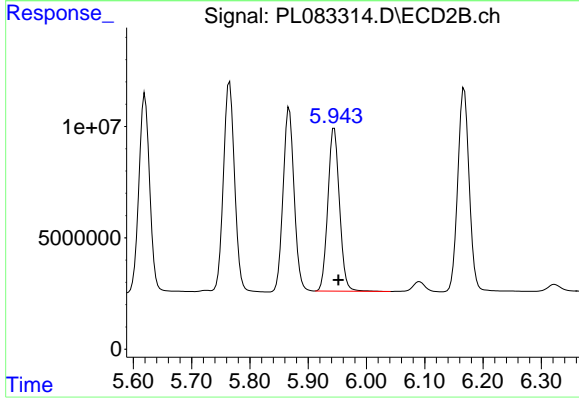
#17 4,4'-DDT

R.T.: 5.867 min
 Delta R.T.: -0.007 min
 Response: 107440081
 Conc: 48.16 ng/ml



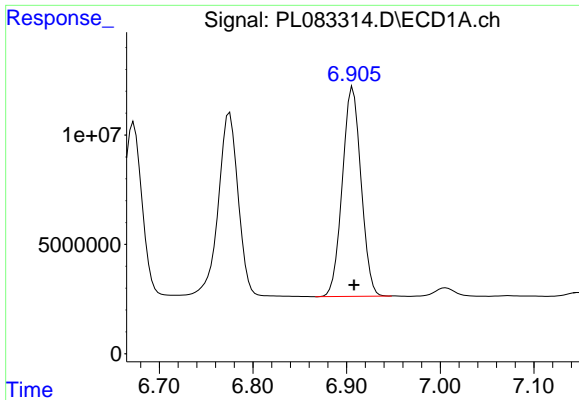
#18 Endrin aldehyde

R.T.: 6.673 min
 Delta R.T.: -0.001 min
 Response: 111256630
 Conc: 55.33 ng/ml



#18 Endrin aldehyde

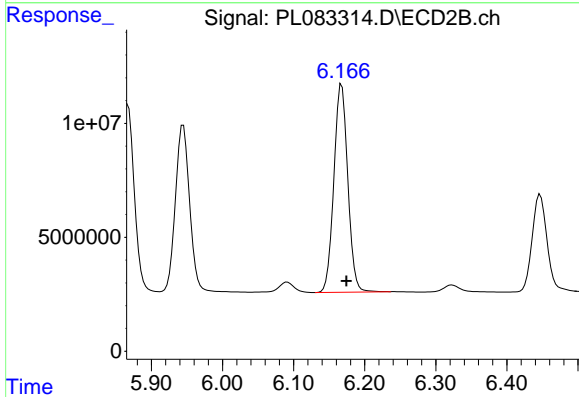
R.T.: 5.945 min
 Delta R.T.: -0.007 min
 Response: 101481811
 Conc: 51.32 ng/ml



#19 Endosulfan Sulfate

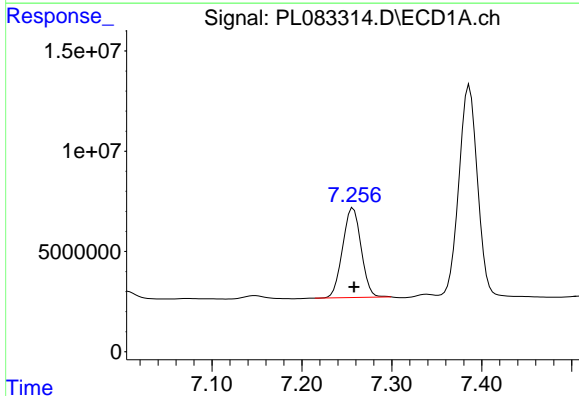
R.T.: 6.907 min
 Delta R.T.: -0.001 min
 Response: 132787688
 Conc: 51.79 ng/ml

Instrument :
 ECD_L
 ClientSampleId :



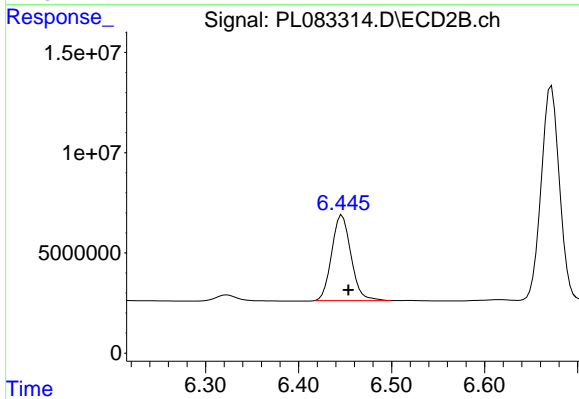
#19 Endosulfan Sulfate

R.T.: 6.168 min
 Delta R.T.: -0.006 min
 Response: 124007500
 Conc: 50.64 ng/ml



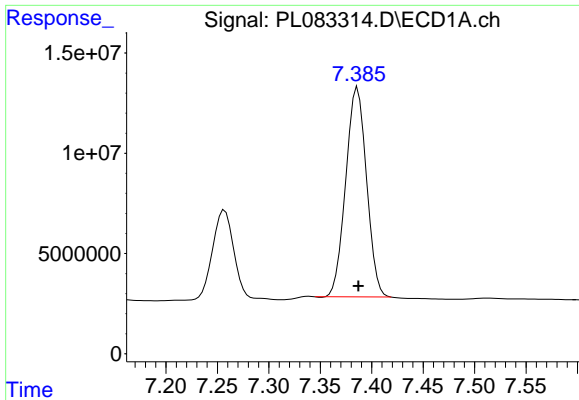
#20 Methoxychlor

R.T.: 7.257 min
 Delta R.T.: 0.000 min
 Response: 64066503
 Conc: 48.45 ng/ml



#20 Methoxychlor

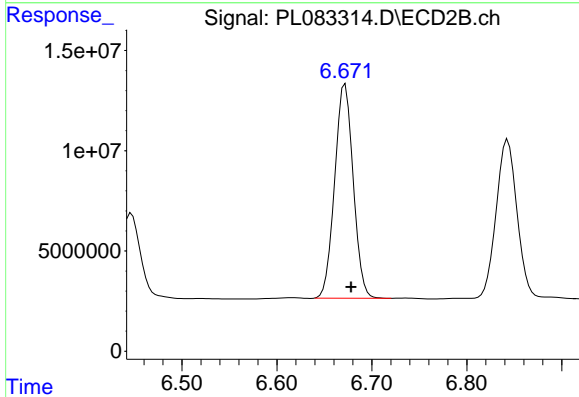
R.T.: 6.447 min
 Delta R.T.: -0.007 min
 Response: 61579667
 Conc: 48.42 ng/ml



#21 Endrin ketone

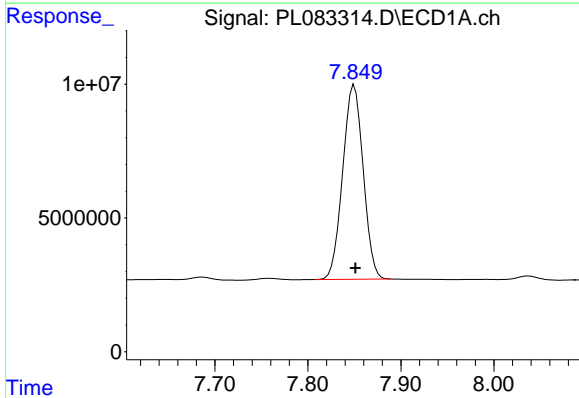
R.T.: 7.386 min
 Delta R.T.: 0.000 min
 Response: 147204231
 Conc: 57.71 ng/ml

Instrument :
 ECD_L
 ClientSampleId :



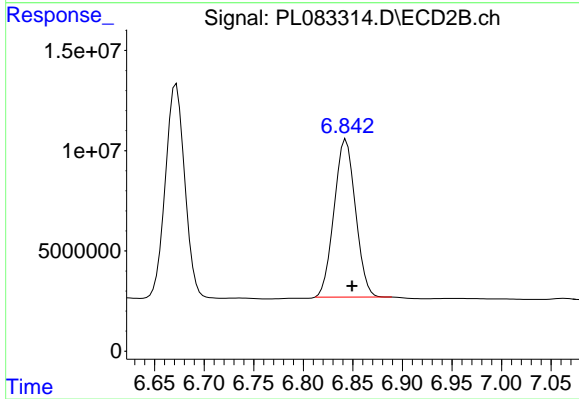
#21 Endrin ketone

R.T.: 6.672 min
 Delta R.T.: -0.006 min
 Response: 145154238
 Conc: 53.68 ng/ml



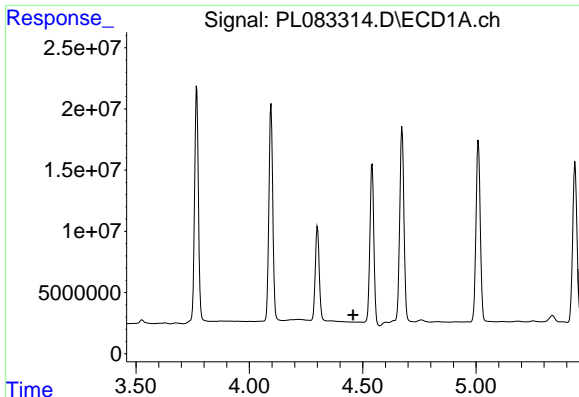
#22 Mirex

R.T.: 7.850 min
 Delta R.T.: -0.001 min
 Response: 111275626
 Conc: 53.09 ng/ml



#22 Mirex

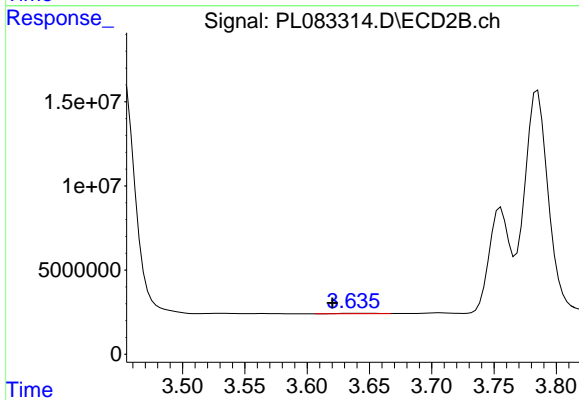
R.T.: 6.843 min
 Delta R.T.: -0.006 min
 Response: 118113847
 Conc: 50.48 ng/ml



#23 Chlordane-1

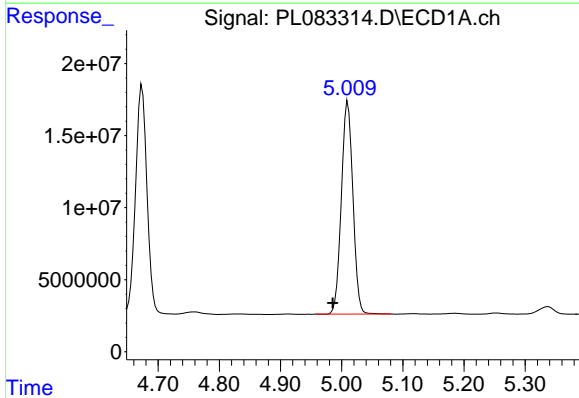
R.T.: 0.000 min
 Exp R.T.: 4.458 min
 Response: 0
 Conc: N.D.

Instrument :
 ECD_L
 ClientSampleId :



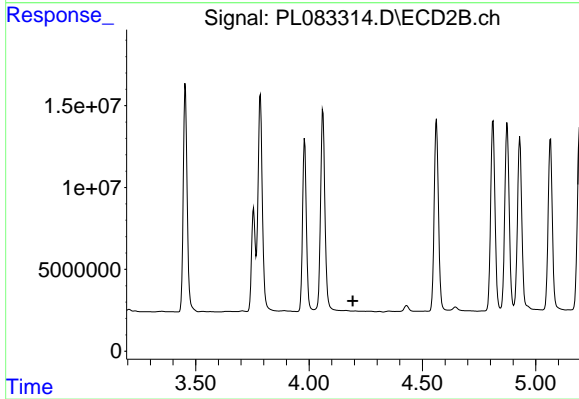
#23 Chlordane-1

R.T.: 3.637 min
 Delta R.T.: 0.017 min
 Response: 602700
 Conc: 7.30 ng/ml



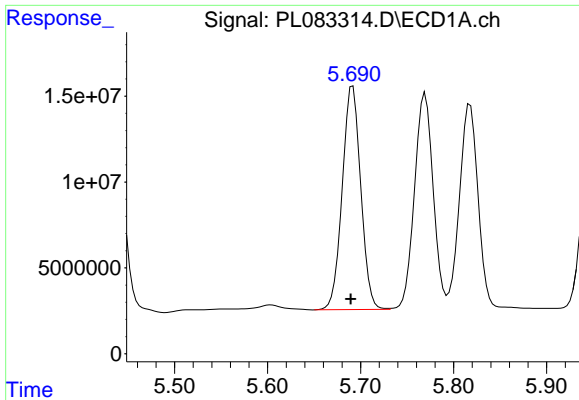
#24 Chlordane-2

R.T.: 5.010 min
 Delta R.T.: 0.025 min
 Response: 193996390
 Conc: 1761.07 ng/ml



#24 Chlordane-2

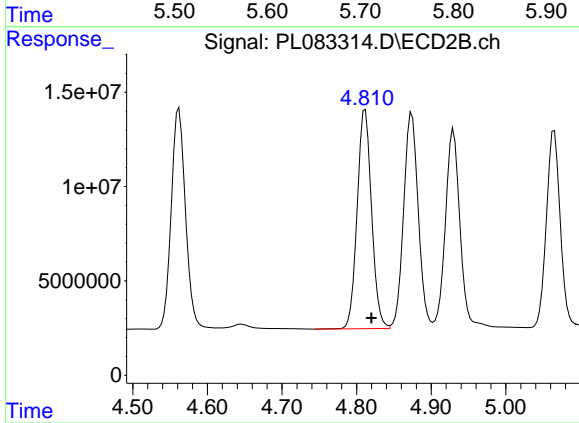
R.T.: 4.204 min
 Delta R.T.: 0.011 min
 Response: -40363
 Conc: N.D.



#25 Chlordane-3

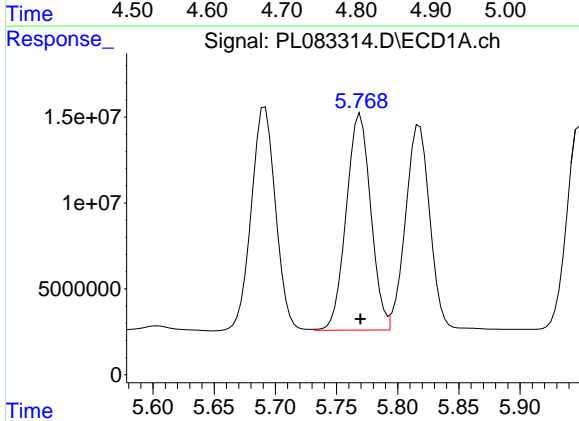
R.T.: 5.691 min
 Delta R.T.: 0.002 min
 Response: 180046388
 Conc: 433.95 ng/ml

Instrument :
 ECD_L
 ClientSampleId :



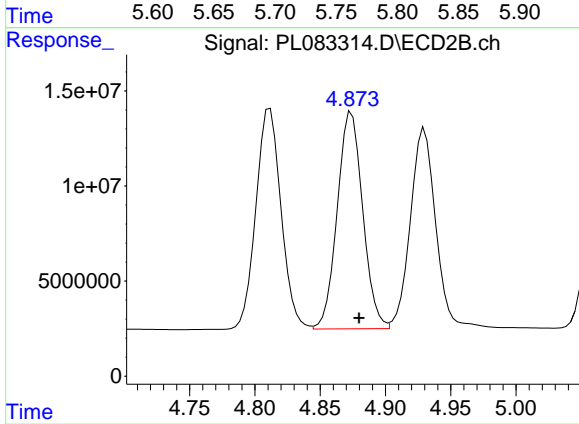
#25 Chlordane-3

R.T.: 4.812 min
 Delta R.T.: -0.008 min
 Response: 155915379
 Conc: 585.04 ng/ml



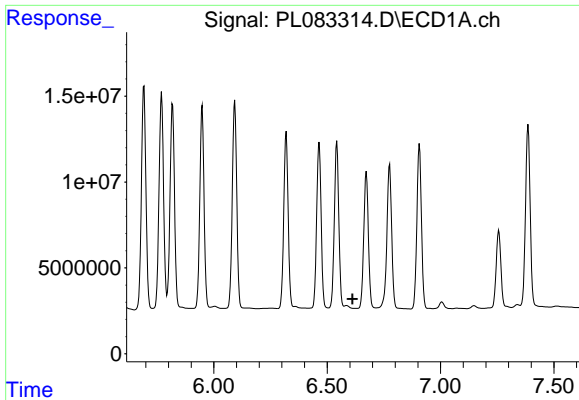
#26 Chlordane-4

R.T.: 5.769 min
 Delta R.T.: 0.000 min
 Response: 175682308
 Conc: 346.94 ng/ml



#26 Chlordane-4

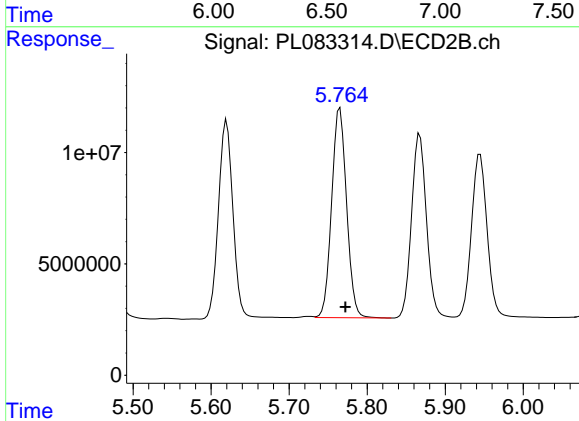
R.T.: 4.874 min
 Delta R.T.: -0.006 min
 Response: 154974771
 Conc: 550.04 ng/ml



#27 Chlordane-5

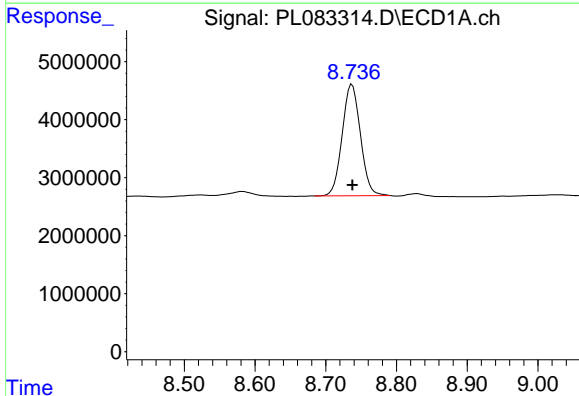
R.T.: 0.000 min
 Exp R.T.: 6.612 min
 Response: 0
 Conc: N.D.

Instrument :
 ECD_L
 ClientSampleId :



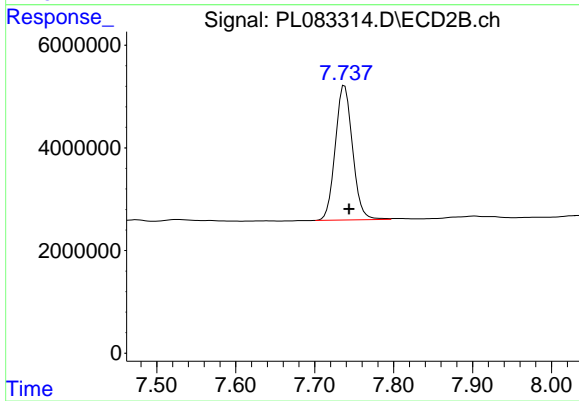
#27 Chlordane-5

R.T.: 5.765 min
 Delta R.T.: -0.007 min
 Response: 125366067
 Conc: 1290.49 ng/ml



#28 Decachlorobiphenyl

R.T.: 8.737 min
 Delta R.T.: 0.000 min
 Response: 34409532
 Conc: 16.41 ng/ml



#28 Decachlorobiphenyl

R.T.: 7.738 min
 Delta R.T.: -0.006 min
 Response: 39812734
 Conc: 16.01 ng/ml