

Data Path : Z:\pestpcbsrv\HPCHEM1\ECD_L\Data\PL060823\
 Data File : PL083318.D
 Signal(s) : Signal #1: ECD1A.ch Signal #2: ECD2B.ch
 Acq On : 08 Jun 2023 13:35
 Operator : AR\AJ
 Sample : 03068-01
 Misc :
 ALS Vial : 9 Sample Multiplier: 1

Instrument :
 ECD_L
 ClientSampleId :

Integration File signal 1: autoint1.e
 Integration File signal 2: autoint2.e
 Quant Time: Jun 08 21:34:40 2023
 Quant Method : Z:\pestpcbsrv\HPCHEM1\ECD_L\methods\PL051923.M
 Quant Title : GC Extractables
 QLast Update : Sat May 20 04:58:53 2023
 Response via : Initial Calibration
 Integrator: ChemStation

Volume Inj. : 1 µl
 Signal #1 Phase : ZB-MR2 Signal #2 Phase: ZB-MR1
 Signal #1 Info : 30M x 0.32mm x0.2 Signal #2 Info : 30M x 0.32mm x0.5µm

	Compound	RT#1	RT#2	Resp#1	Resp#2	ng/ml	ng/ml

System Monitoring Compounds							
1)	SA Tetrachlo...	3.316	2.634	32237809	29376258	10.969	11.316
28)	SA Decachlor...	8.737	7.740	26433699	29680169	12.604	11.936
Target Compounds							
2)	A alpha-BHC	3.797f	3.116f	835217	49686	0.188	0.013 #
3)	MA gamma-BHC...	4.096	0.000	597672	0	0.144	N.D. #
4)	MA Heptachlor	4.705f	0.000	471129	0	0.123	N.D. #
5)	MB Aldrin	4.984f	4.068	509748	945978	0.145	0.291 #
6)	B beta-BHC	4.304	3.760	445680	836523	0.237	0.585 #
7)	B delta-BHC	4.534	3.995	1299263	447835	0.378	0.137 #
8)	B Heptachlo...	5.437	4.559	292379	258870	0.091	0.087
9)	A Endosulfan I	5.848f	4.957f	816239	1191150	0.272	0.426 #
10)	B gamma-Chl...	5.676f	4.830	5055059	3377927	1.591	1.125 #
11)	B alpha-Chl...	5.772	4.873	3608220	3778466	1.124	1.259
12)	B 4,4'-DDE	5.953	5.066	-153722	1586212	N.D.	0.653
13)	MA Dieldrin	6.094	5.199	31796	2131750	0.011	0.755 #
14)	MA Endrin	0.000	5.479	0	118646	N.D.	0.047 #
16)	A 4,4'-DDD	6.467	5.621	467763	233316	0.215	0.121 #
17)	MA 4,4'-DDT	6.774	5.866	639366	934309	0.255	0.419 #
18)	B Endrin al...	0.000	5.950	0	341746	N.D.	0.173 #
19)	B Endosulfa...	0.000	6.163	0	79648	N.D.	0.033 #
20)	A Methoxychlor	0.000	6.476f	0	12162	N.D.	0.010 #
21)	B Endrin ke...	7.365f	6.657f	206995	100118	0.081	0.037 #
23)	Chlordane-1	4.477f	3.620	696604	2741225	6.367	33.222 #
24)	Chlordane-2	4.984	0.000	509748	0	4.627	N.D. #
25)	Chlordane-3	5.676	4.830	5055059	3377927	12.184	12.675
26)	Chlordane-4	5.772	4.873	3608220	3778466	7.126	13.411 #
27)	Chlordane-5	6.595f	5.758	310483	-58485	3.783	N.D. #

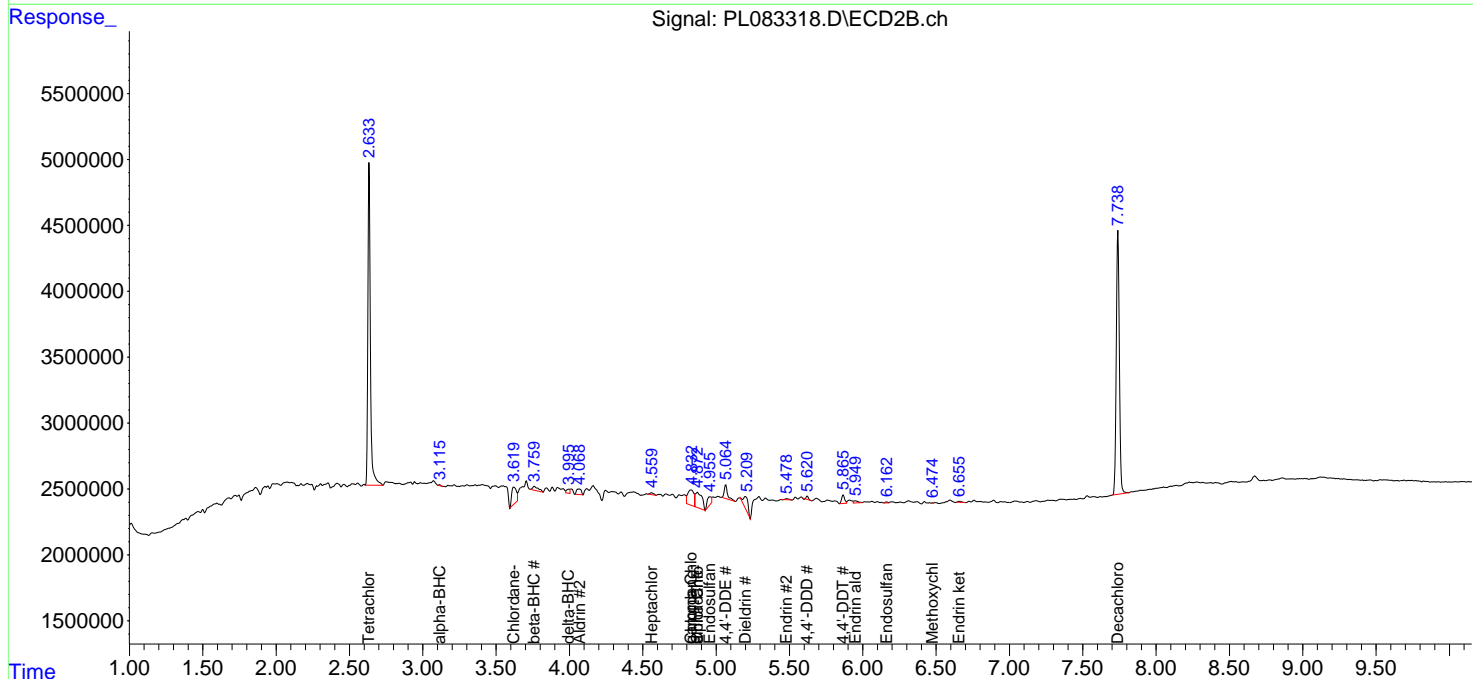
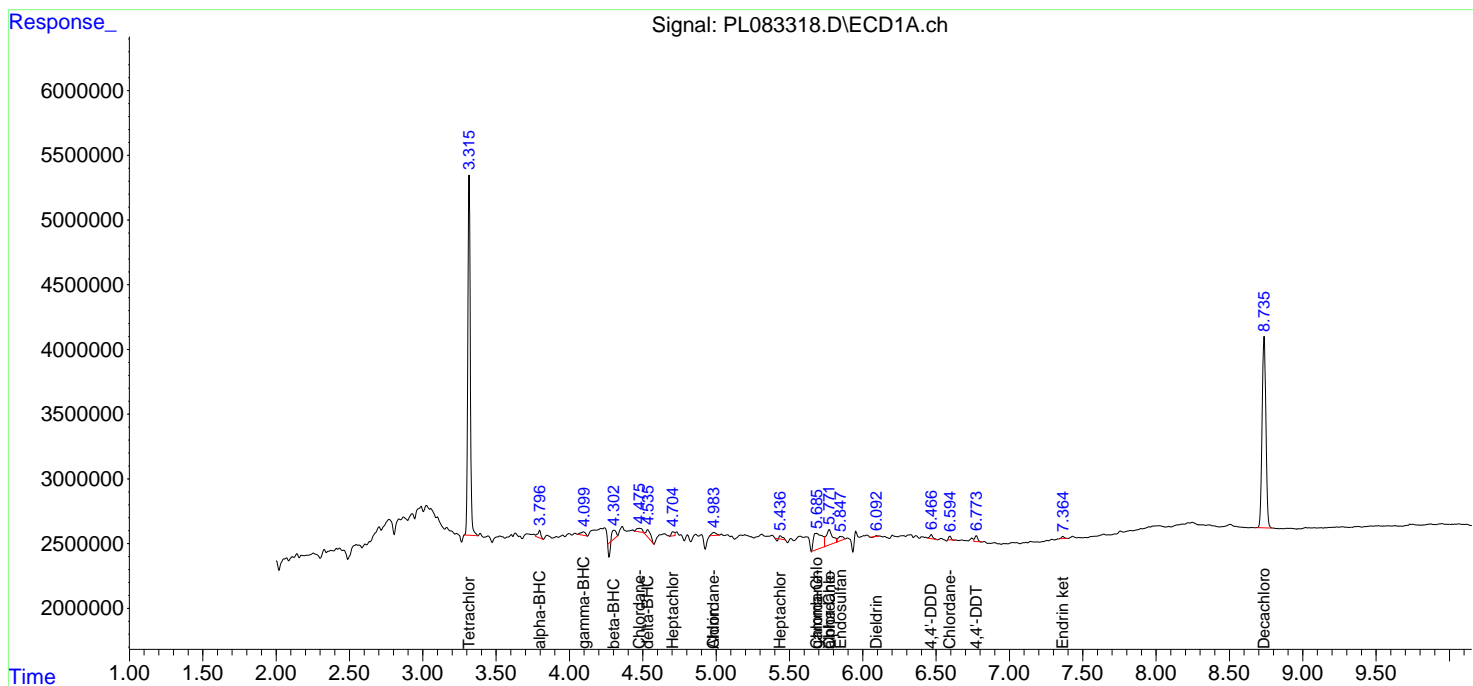
(f)=RT Delta > 1/2 Window (#)=Amounts differ by > 25% (m)=manual int.

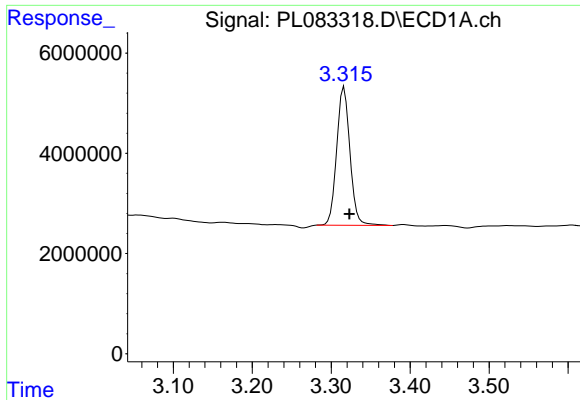
Data Path : Z:\pestpcbsrv\HPCHEM1\ECD_L\Data\PL060823\
 Data File : PL083318.D
 Signal(s) : Signal #1: ECD1A.ch Signal #2: ECD2B.ch
 Acq On : 08 Jun 2023 13:35
 Operator : AR\AJ
 Sample : 03068-01
 Misc :
 ALS Vial : 9 Sample Multiplier: 1

Instrument :
 ECD_L
 ClientSampleId :

Integration File signal 1: autoint1.e
 Integration File signal 2: autoint2.e
 Quant Time: Jun 08 21:34:40 2023
 Quant Method : Z:\pestpcbsrv\HPCHEM1\ECD_L\methods\PL051923.M
 Quant Title : GC Extractables
 QLast Update : Sat May 20 04:58:53 2023
 Response via : Initial Calibration
 Integrator: ChemStation

Volume Inj. : 1 µl
 Signal #1 Phase : ZB-MR2 Signal #2 Phase: ZB-MR1
 Signal #1 Info : 30M x 0.32mm x0.2 Signal #2 Info : 30M x 0.32mm x0.5µm

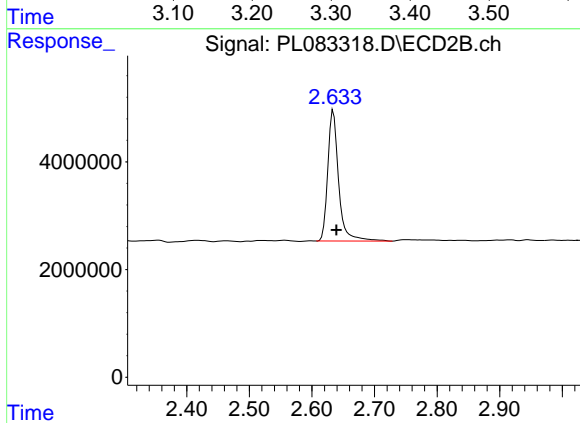




#1 Tetrachloro-m-xylene

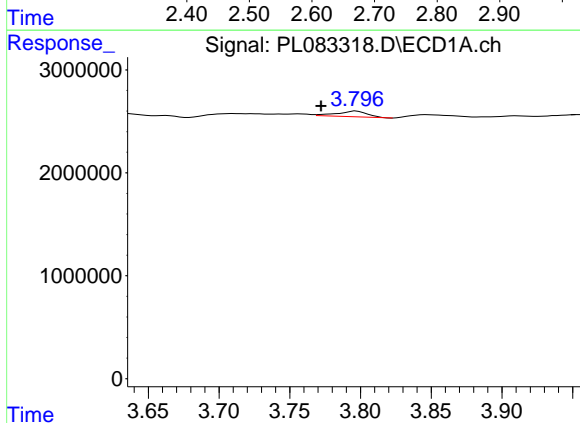
R.T.: 3.316 min
 Delta R.T.: -0.007 min
 Response: 32237809
 Conc: 10.97 ng/ml

Instrument :
 ECD_L
 ClientSampleId :



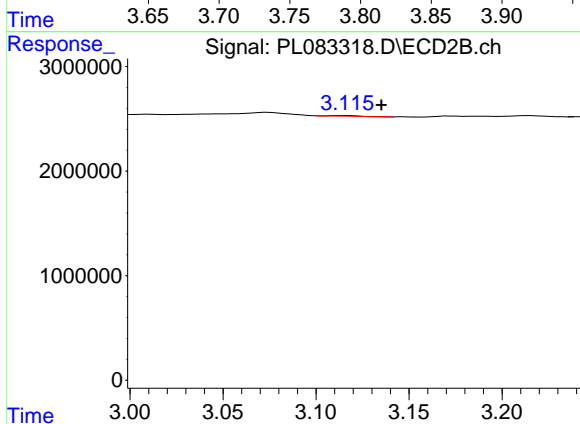
#1 Tetrachloro-m-xylene

R.T.: 2.634 min
 Delta R.T.: -0.005 min
 Response: 29376258
 Conc: 11.32 ng/ml



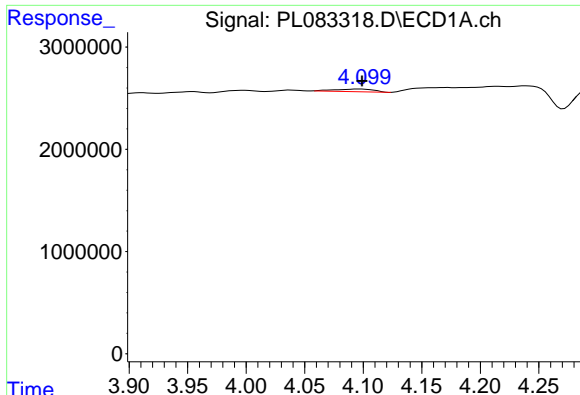
#2 alpha-BHC

R.T.: 3.797 min
 Delta R.T.: 0.025 min
 Response: 835217
 Conc: 0.19 ng/ml



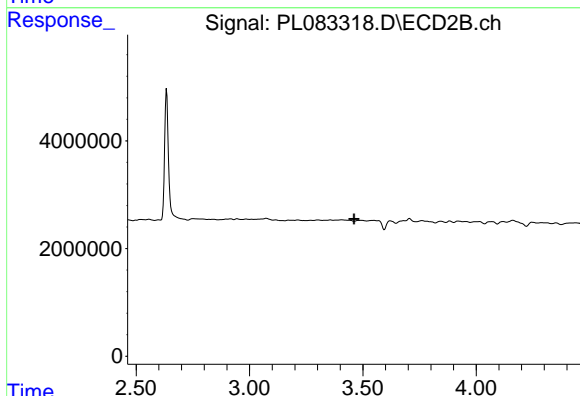
#2 alpha-BHC

R.T.: 3.116 min
 Delta R.T.: -0.019 min
 Response: 49686
 Conc: 0.01 ng/ml

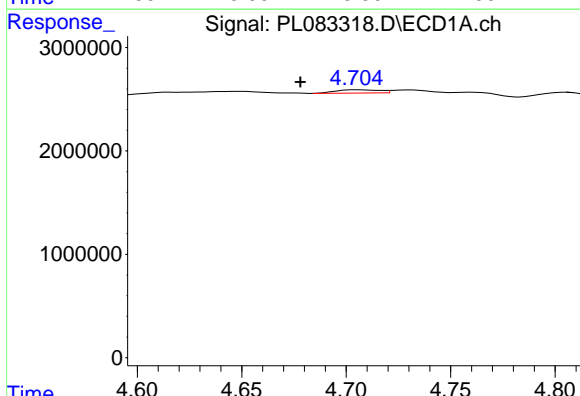


#3 gamma-BHC (Lindane)
 R.T.: 4.096 min
 Delta R.T.: -0.003 min
 Response: 597672
 Conc: 0.14 ng/ml

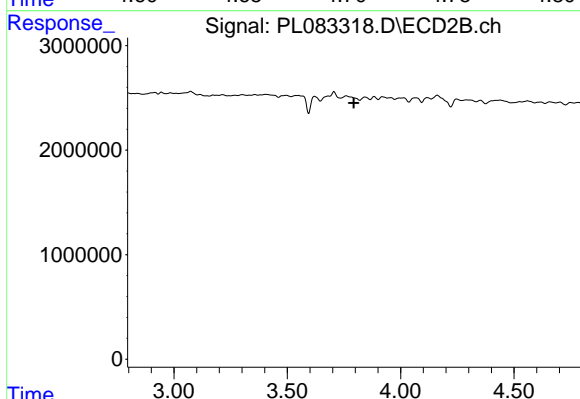
Instrument :
 ECD_L
 ClientSampleId :



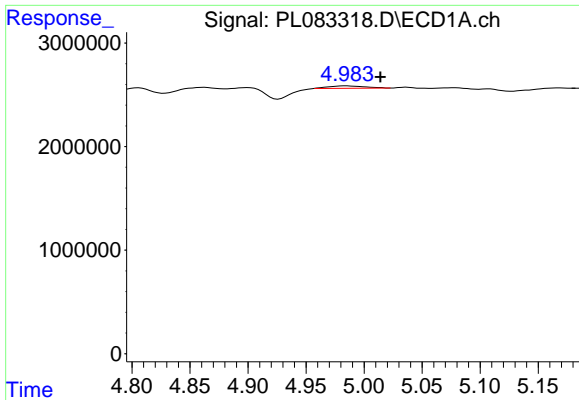
#3 gamma-BHC (Lindane)
 R.T.: 0.000 min
 Exp R.T. : 3.462 min
 Response: 0
 Conc: N.D.



#4 Heptachlor
 R.T.: 4.705 min
 Delta R.T.: 0.027 min
 Response: 471129
 Conc: 0.12 ng/ml

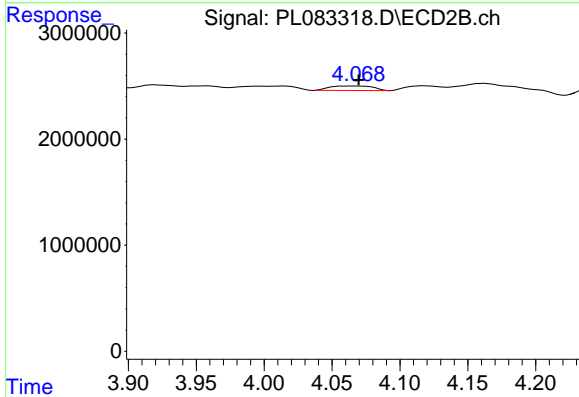


#4 Heptachlor
 R.T.: 0.000 min
 Exp R.T. : 3.793 min
 Response: 0
 Conc: N.D.

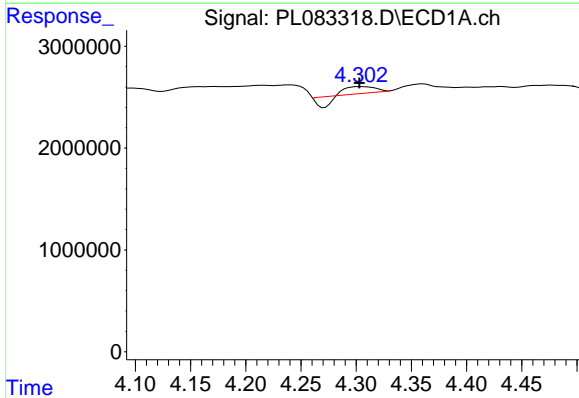


#5 Aldrin
 R.T.: 4.984 min
 Delta R.T.: -0.030 min
 Response: 509748
 Conc: 0.14 ng/ml

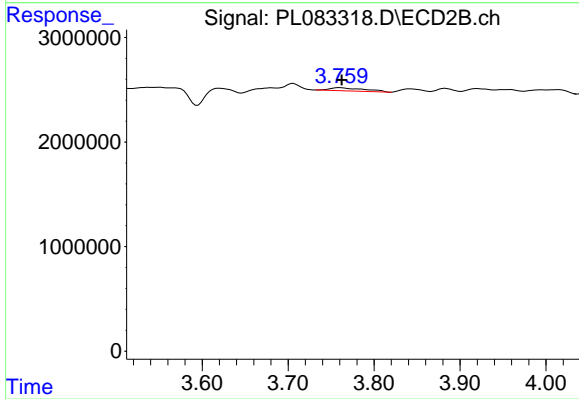
Instrument :
 ECD_L
 ClientSampleId :



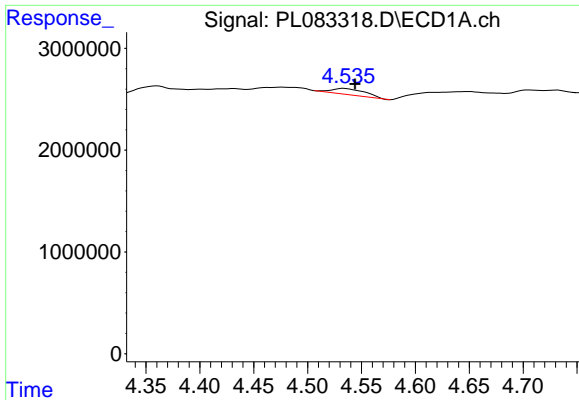
#5 Aldrin
 R.T.: 4.068 min
 Delta R.T.: -0.002 min
 Response: 945978
 Conc: 0.29 ng/ml



#6 beta-BHC
 R.T.: 4.304 min
 Delta R.T.: 0.000 min
 Response: 445680
 Conc: 0.24 ng/ml



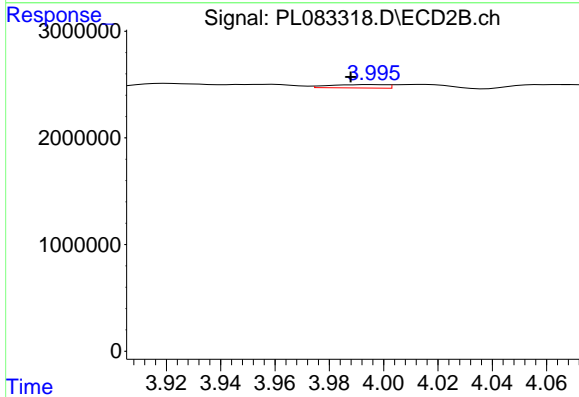
#6 beta-BHC
 R.T.: 3.760 min
 Delta R.T.: -0.002 min
 Response: 836523
 Conc: 0.58 ng/ml



#7 delta-BHC

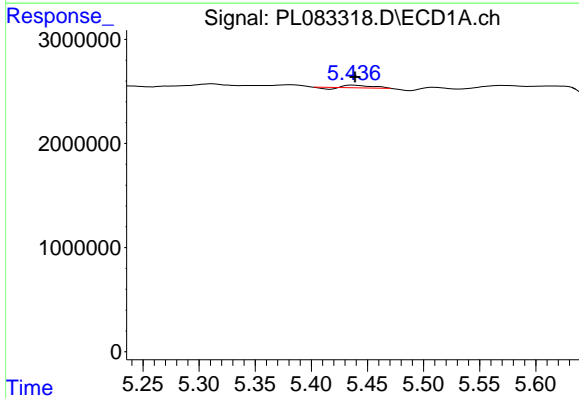
R.T.: 4.534 min
 Delta R.T.: -0.010 min
 Response: 1299263
 Conc: 0.38 ng/ml

Instrument :
 ECD_L
 ClientSampleId :



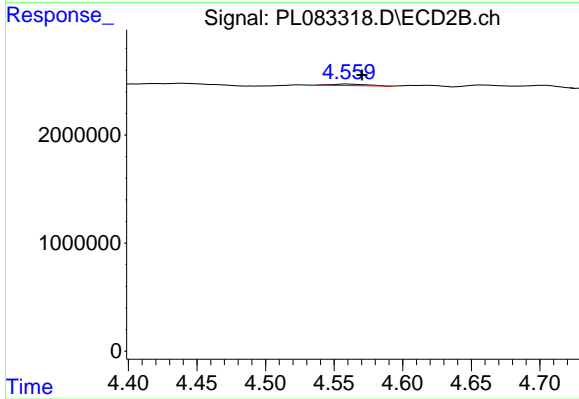
#7 delta-BHC

R.T.: 3.995 min
 Delta R.T.: 0.008 min
 Response: 447835
 Conc: 0.14 ng/ml



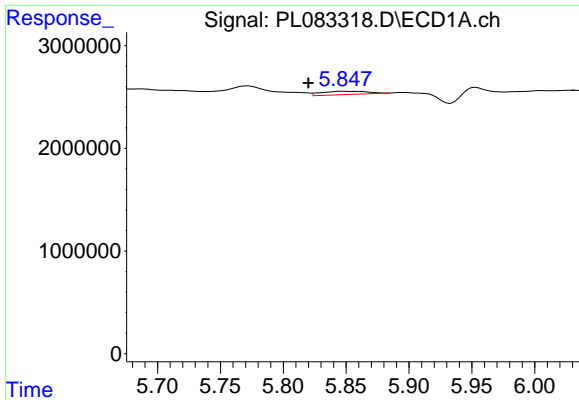
#8 Heptachlor epoxide

R.T.: 5.437 min
 Delta R.T.: -0.002 min
 Response: 292379
 Conc: 0.09 ng/ml



#8 Heptachlor epoxide

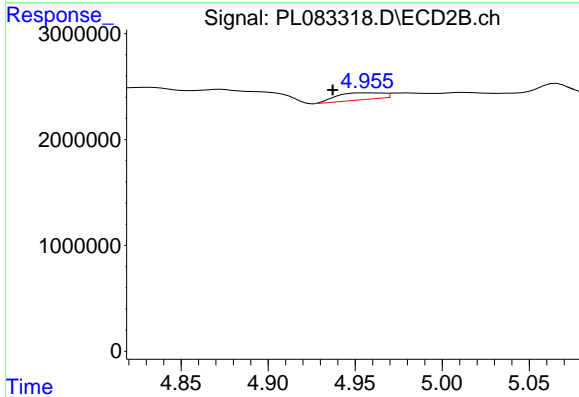
R.T.: 4.559 min
 Delta R.T.: -0.011 min
 Response: 258870
 Conc: 0.09 ng/ml



#9 Endosulfan I

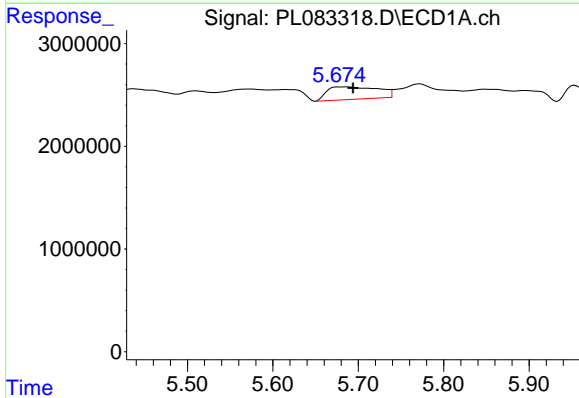
R.T.: 5.848 min
 Delta R.T.: 0.028 min
 Response: 816239
 Conc: 0.27 ng/ml

Instrument :
 ECD_L
 ClientSampleId :



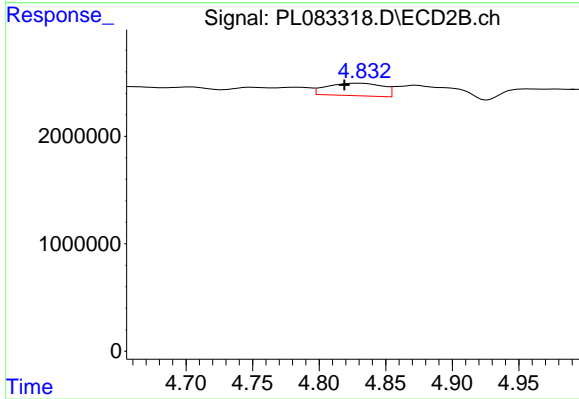
#9 Endosulfan I

R.T.: 4.957 min
 Delta R.T.: 0.020 min
 Response: 1191150
 Conc: 0.43 ng/ml



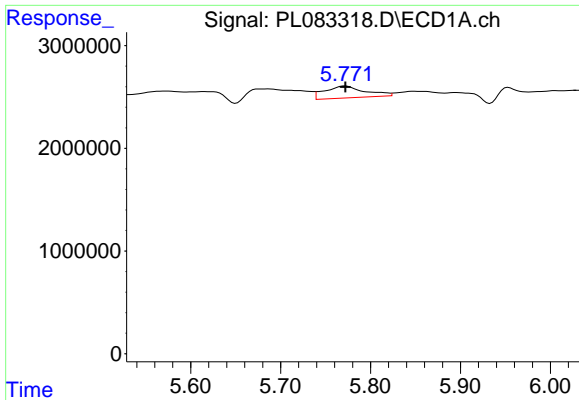
#10 gamma-Chlordane

R.T.: 5.676 min
 Delta R.T.: -0.018 min
 Response: 5055059
 Conc: 1.59 ng/ml



#10 gamma-Chlordane

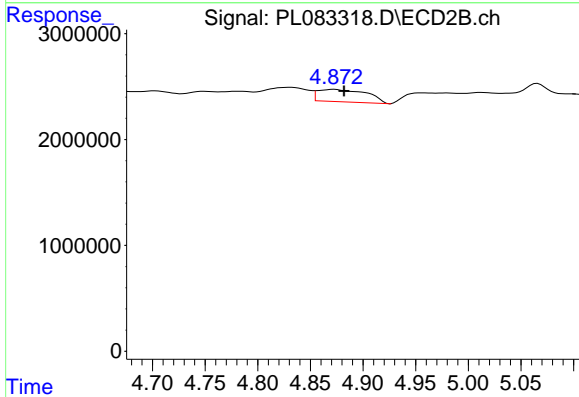
R.T.: 4.830 min
 Delta R.T.: 0.011 min
 Response: 3377927
 Conc: 1.12 ng/ml



#11 alpha-Chlordane

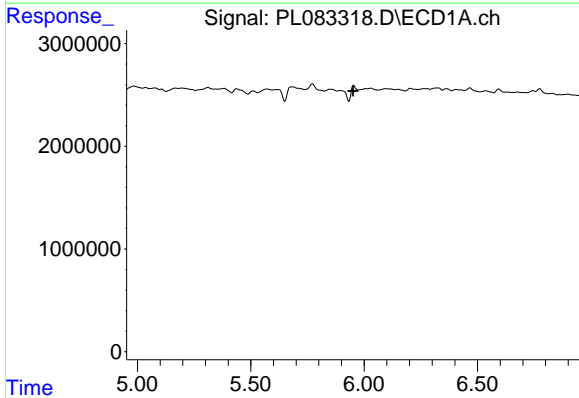
R.T.: 5.772 min
 Delta R.T.: 0.000 min
 Response: 3608220
 Conc: 1.12 ng/ml

Instrument :
 ECD_L
 ClientSampleId :



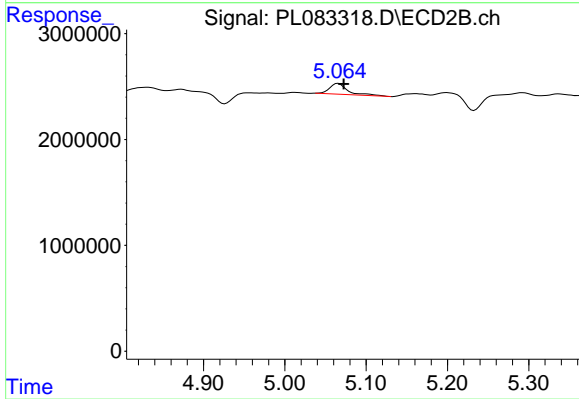
#11 alpha-Chlordane

R.T.: 4.873 min
 Delta R.T.: -0.009 min
 Response: 3778466
 Conc: 1.26 ng/ml



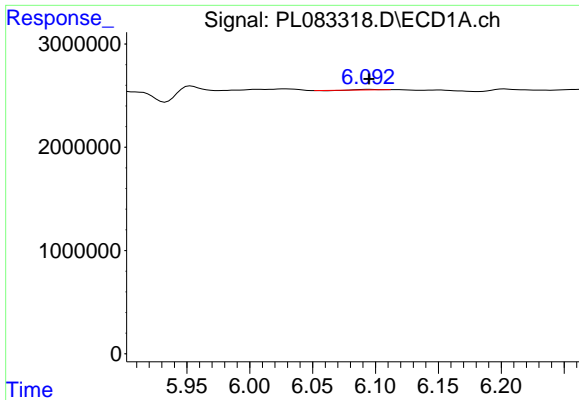
#12 4,4'-DDE

R.T.: 5.953 min
 Delta R.T.: 0.002 min
 Response: -153722
 Conc: N.D.



#12 4,4'-DDE

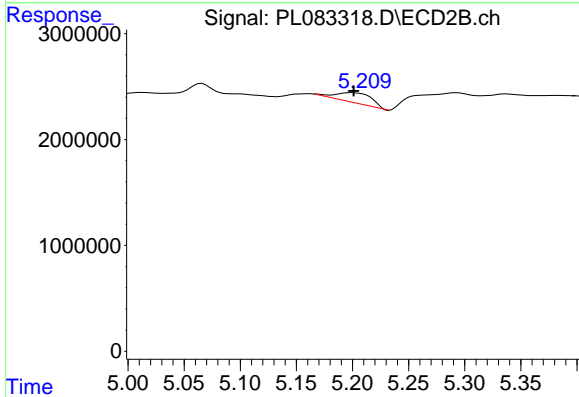
R.T.: 5.066 min
 Delta R.T.: -0.007 min
 Response: 1586212
 Conc: 0.65 ng/ml



#13 Dieldrin

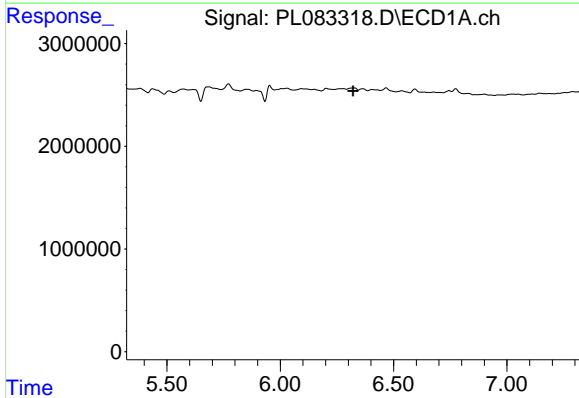
R.T.: 6.094 min
 Delta R.T.: -0.001 min
 Response: 31796
 Conc: 0.01 ng/ml

Instrument :
 ECD_L
 ClientSampleId :



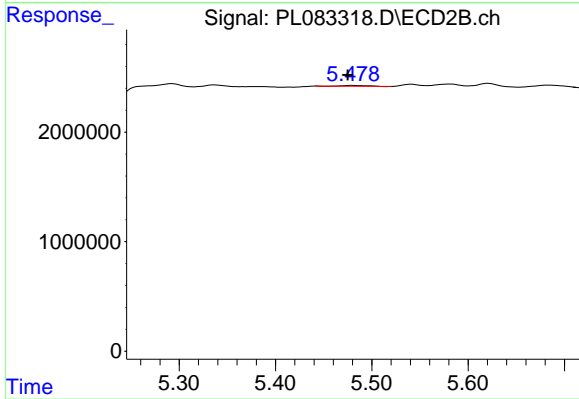
#13 Dieldrin

R.T.: 5.199 min
 Delta R.T.: -0.002 min
 Response: 2131750
 Conc: 0.76 ng/ml



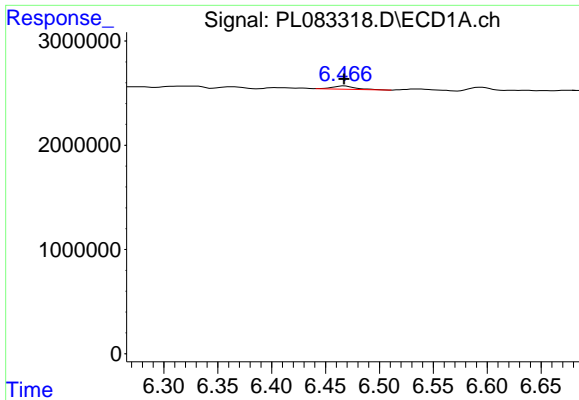
#14 Endrin

R.T.: 0.000 min
 Exp R.T. : 6.321 min
 Response: 0
 Conc: N.D.



#14 Endrin

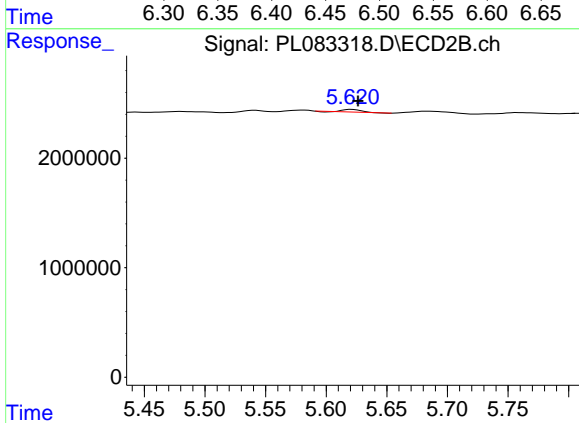
R.T.: 5.479 min
 Delta R.T.: 0.004 min
 Response: 118646
 Conc: 0.05 ng/ml



#16 4,4'-DDD

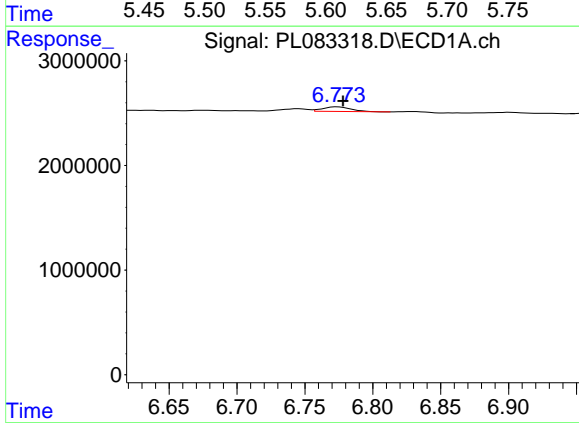
R.T.: 6.467 min
 Delta R.T.: 0.000 min
 Response: 467763
 Conc: 0.22 ng/ml

Instrument :
 ECD_L
 ClientSampleId :



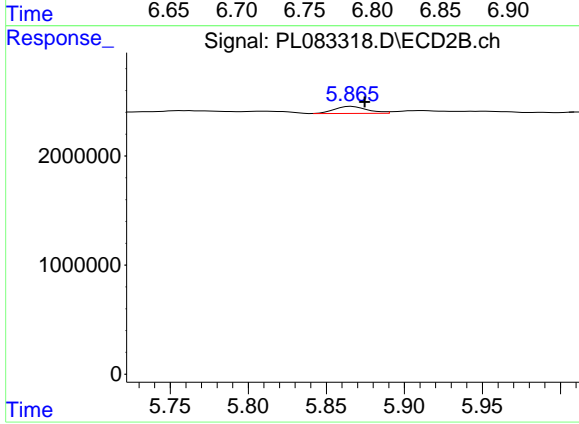
#16 4,4'-DDD

R.T.: 5.621 min
 Delta R.T.: -0.005 min
 Response: 233316
 Conc: 0.12 ng/ml



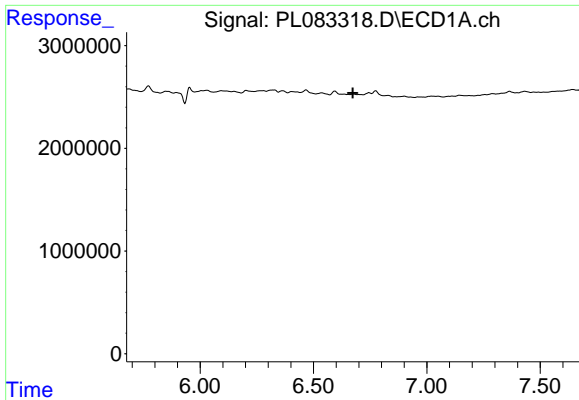
#17 4,4'-DDT

R.T.: 6.774 min
 Delta R.T.: -0.004 min
 Response: 639366
 Conc: 0.26 ng/ml



#17 4,4'-DDT

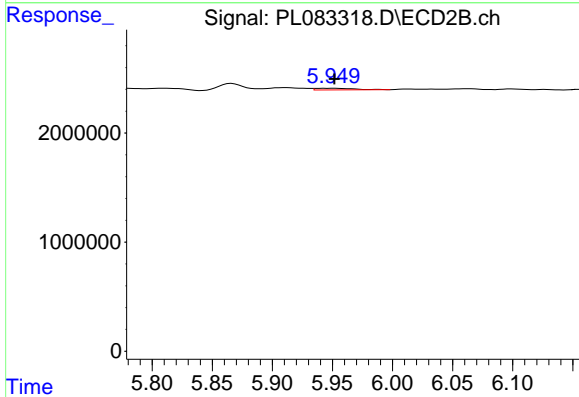
R.T.: 5.866 min
 Delta R.T.: -0.008 min
 Response: 934309
 Conc: 0.42 ng/ml



#18 Endrin aldehyde

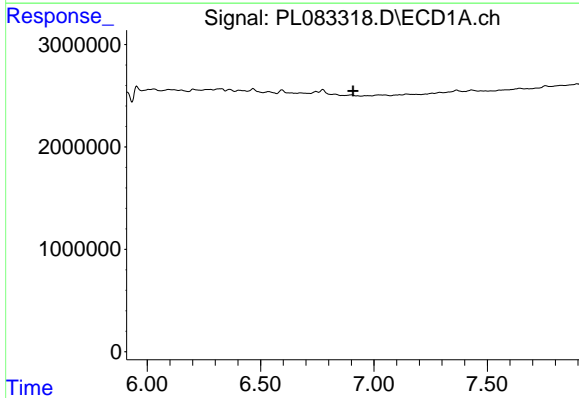
R.T.: 0.000 min
 Exp R.T. : 6.674 min
 Response: 0
 Conc: N.D.

Instrument :
 ECD_L
 ClientSampleId :



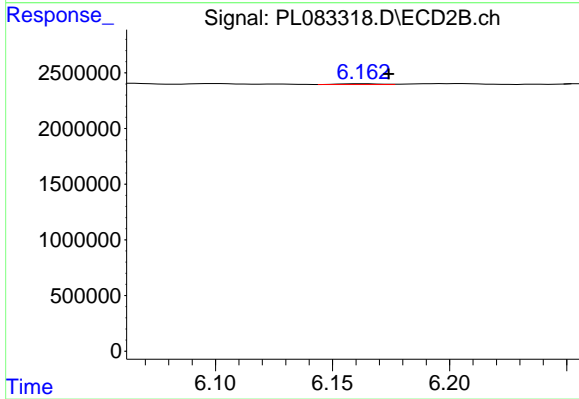
#18 Endrin aldehyde

R.T.: 5.950 min
 Delta R.T.: -0.001 min
 Response: 341746
 Conc: 0.17 ng/ml



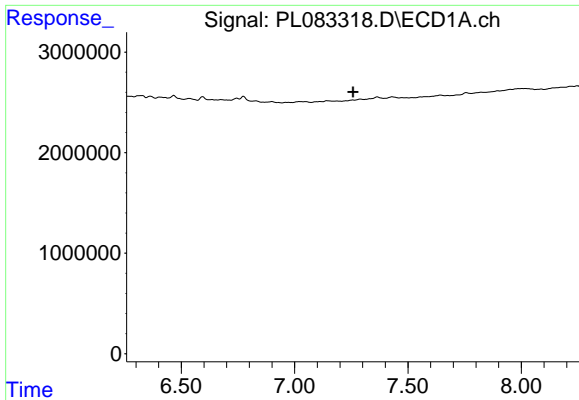
#19 Endosulfan Sulfate

R.T.: 0.000 min
 Exp R.T. : 6.908 min
 Response: 0
 Conc: N.D.



#19 Endosulfan Sulfate

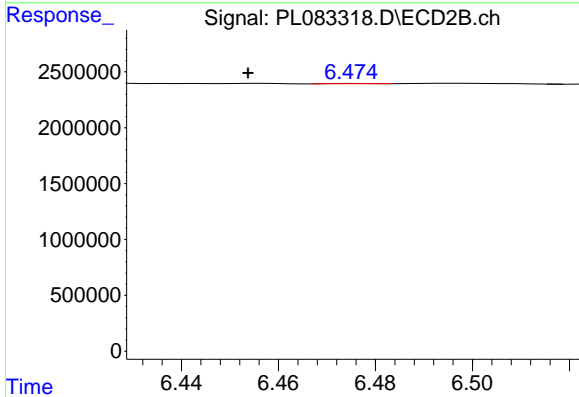
R.T.: 6.163 min
 Delta R.T.: -0.011 min
 Response: 79648
 Conc: 0.03 ng/ml



#20 Methoxychlor

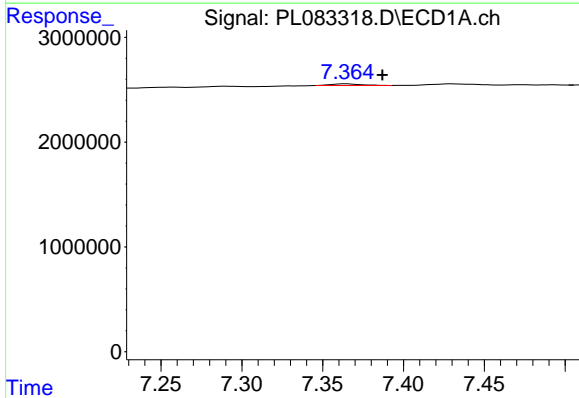
R.T.: 0.000 min
 Exp R.T.: 7.258 min
 Response: 0
 Conc: N.D.

Instrument :
 ECD_L
 ClientSampleId :



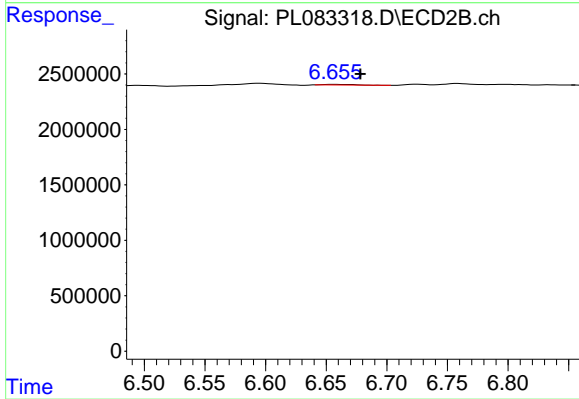
#20 Methoxychlor

R.T.: 6.476 min
 Delta R.T.: 0.022 min
 Response: 12162
 Conc: 0.01 ng/ml



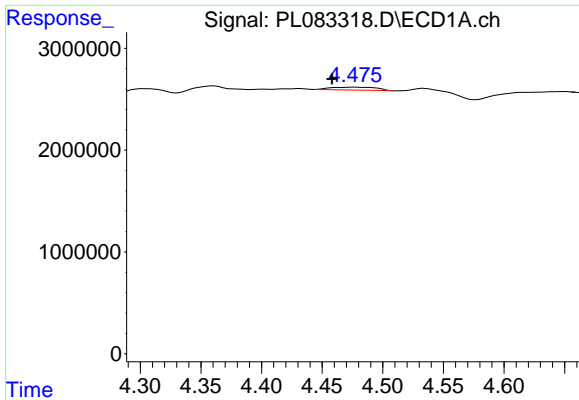
#21 Endrin ketone

R.T.: 7.365 min
 Delta R.T.: -0.022 min
 Response: 206995
 Conc: 0.08 ng/ml



#21 Endrin ketone

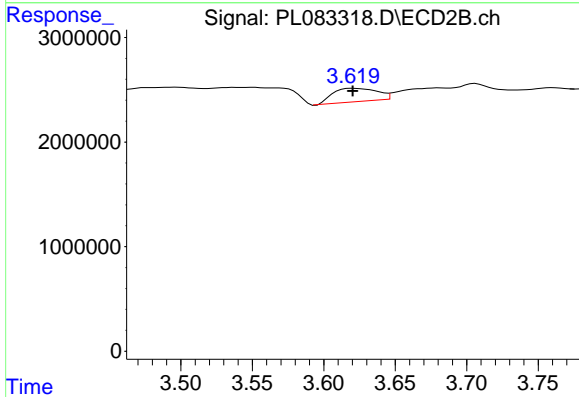
R.T.: 6.657 min
 Delta R.T.: -0.021 min
 Response: 100118
 Conc: 0.04 ng/ml



#23 Chlordane-1

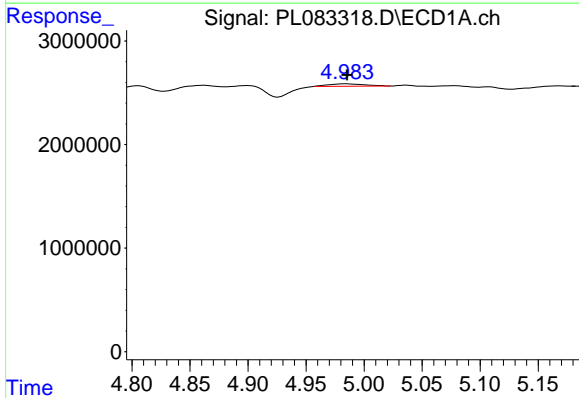
R.T.: 4.477 min
 Delta R.T.: 0.019 min
 Response: 696604
 Conc: 6.37 ng/ml

Instrument :
 ECD_L
 ClientSampleId :



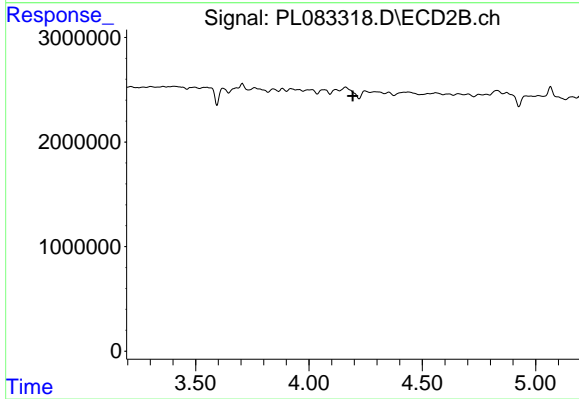
#23 Chlordane-1

R.T.: 3.620 min
 Delta R.T.: 0.000 min
 Response: 2741225
 Conc: 33.22 ng/ml



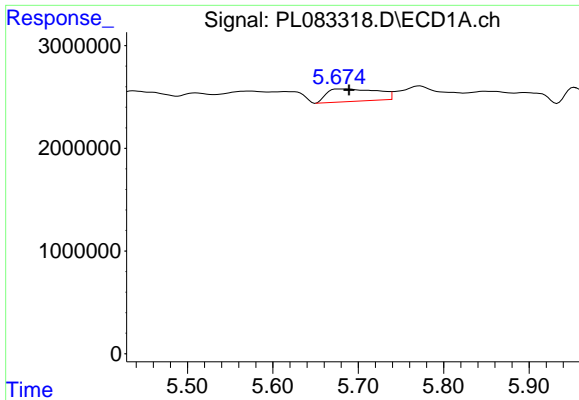
#24 Chlordane-2

R.T.: 4.984 min
 Delta R.T.: 0.000 min
 Response: 509748
 Conc: 4.63 ng/ml



#24 Chlordane-2

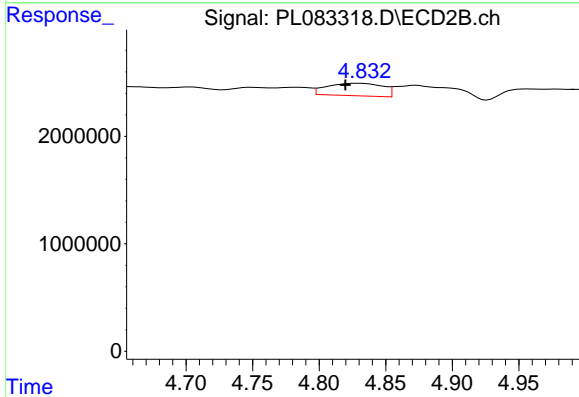
R.T.: 0.000 min
 Exp R.T. : 4.193 min
 Response: 0
 Conc: N.D.



#25 Chlordane-3

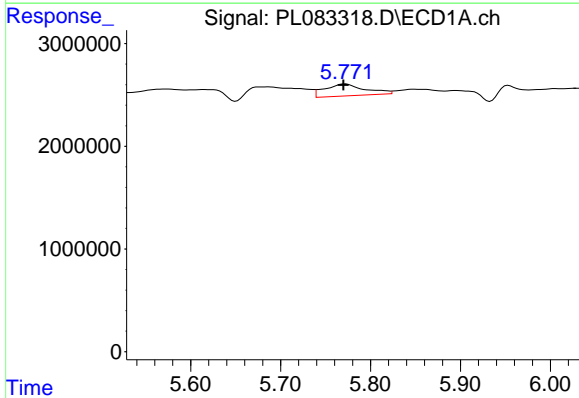
R.T.: 5.676 min
 Delta R.T.: -0.013 min
 Response: 5055059
 Conc: 12.18 ng/ml

Instrument :
 ECD_L
 ClientSampleId :



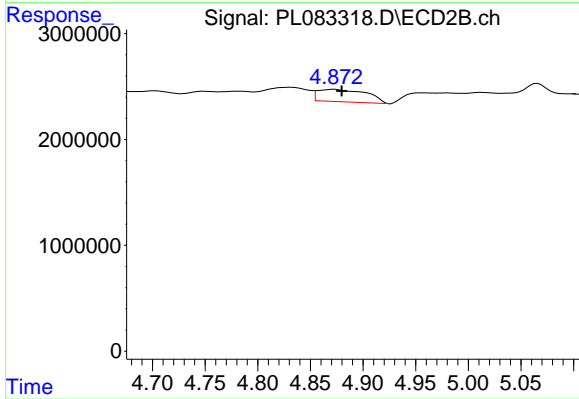
#25 Chlordane-3

R.T.: 4.830 min
 Delta R.T.: 0.011 min
 Response: 3377927
 Conc: 12.67 ng/ml



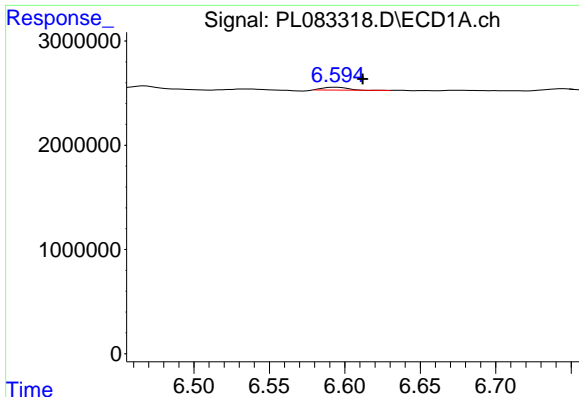
#26 Chlordane-4

R.T.: 5.772 min
 Delta R.T.: 0.002 min
 Response: 3608220
 Conc: 7.13 ng/ml



#26 Chlordane-4

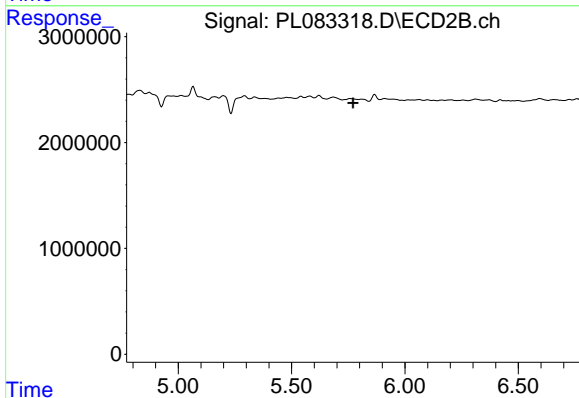
R.T.: 4.873 min
 Delta R.T.: -0.007 min
 Response: 3778466
 Conc: 13.41 ng/ml



#27 Chlordane-5

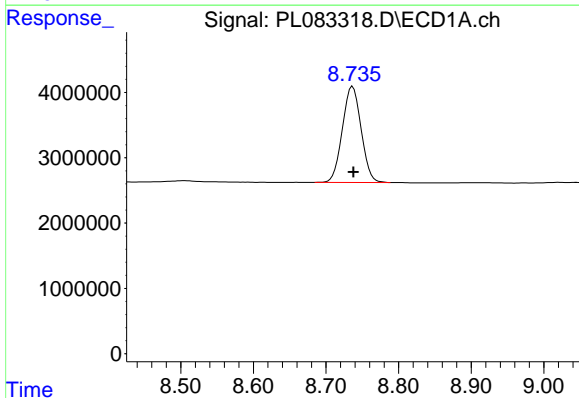
R.T.: 6.595 min
 Delta R.T.: -0.017 min
 Response: 310483
 Conc: 3.78 ng/ml

Instrument :
 ECD_L
 ClientSampleId :



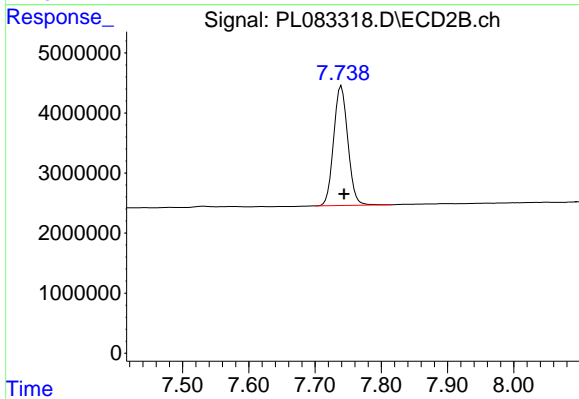
#27 Chlordane-5

R.T.: 5.758 min
 Delta R.T.: -0.014 min
 Response: -58485
 Conc: N.D.



#28 Decachlorobiphenyl

R.T.: 8.737 min
 Delta R.T.: -0.001 min
 Response: 26433699
 Conc: 12.60 ng/ml



#28 Decachlorobiphenyl

R.T.: 7.740 min
 Delta R.T.: -0.004 min
 Response: 29680169
 Conc: 11.94 ng/ml