

Data Path : Z:\pestpcbsrv\HPCHEM1\ECD_L\Data\PL060823\
 Data File : PL083332.D
 Signal(s) : Signal #1: ECD1A.ch Signal #2: ECD2B.ch
 Acq On : 08 Jun 2023 17:58
 Operator : AR\AJ
 Sample : 03069-04
 Misc :
 ALS Vial : 20 Sample Multiplier: 1

Instrument :
 ECD_L
 ClientSampleId :

Integration File signal 1: autoint1.e
 Integration File signal 2: autoint2.e
 Quant Time: Jun 08 21:42:32 2023
 Quant Method : Z:\pestpcbsrv\HPCHEM1\ECD_L\methods\PL051923.M
 Quant Title : GC Extractables
 QLast Update : Sat May 20 04:58:53 2023
 Response via : Initial Calibration
 Integrator: ChemStation

Volume Inj. : 1 µl
 Signal #1 Phase : ZB-MR2 Signal #2 Phase: ZB-MR1
 Signal #1 Info : 30M x 0.32mm x0.2 Signal #2 Info : 30M x 0.32mm x0.5µm

	Compound	RT#1	RT#2	Resp#1	Resp#2	ng/ml	ng/ml

System Monitoring Compounds							
1)	SA Tetrachlo...	3.313	2.632	34972029	31699435	11.899	12.210
28)	SA Decachlor...	8.731	7.736	27677016	32095178	13.196	12.908
Target Compounds							
2)	A alpha-BHC	3.794f	3.109f	286576	55972	0.065	0.015 #
3)	MA gamma-BHC...	0.000	3.470	0	243748	N.D.	0.073 #
4)	MA Heptachlor	0.000	3.807	0	60553	N.D.	0.017 #
5)	MB Aldrin	0.000	4.073	0	215506	N.D.	0.066 #
6)	B beta-BHC	4.322f	3.757	495386	27009	0.263	0.019 #
7)	B delta-BHC	4.529f	0.000	899791	0	0.262	N.D. #
8)	B Heptachlo...	5.431	4.598f	53905	13864	0.017	0.005 #
9)	A Endosulfan I	0.000	4.955f	0	178894	N.D.	0.064 #
10)	B gamma-Chl...	5.706	4.822	781323	1978031	0.246	0.659 #
11)	B alpha-Chl...	5.768	4.901f	684217	494710	0.213	0.165
12)	B 4,4'-DDE	5.942	5.063	69348319	61360349	25.158	25.264
13)	MA Dieldrin	6.093	5.196	194998	1242681	0.065	0.440 #
14)	MA Endrin	6.320	5.477	272014	2519238	0.101	0.993 #
16)	A 4,4'-DDD	6.462	5.617	3224522	1361062	1.484	0.708 #
17)	MA 4,4'-DDT	6.769	5.864	12316516	10763270	4.920	4.824
18)	B Endrin al...	0.000	5.961	0	294767	N.D.	0.149 #
19)	B Endosulfa...	6.880f	6.189	300453	412322	0.117	0.168 #
20)	A Methoxychlor	7.284f	0.000	304161	0	0.230	N.D. #
21)	B Endrin ke...	7.361f	6.694f	800956	476308	0.314	0.176 #
22)	Mirex	0.000	6.837	0	9075	N.D.	0.004 #
23)	Chlordane-1	0.000	3.632	0	409377	N.D.	4.961 #
25)	Chlordane-3	5.706f	4.822	781323	1978031	1.883	7.422 #
26)	Chlordane-4	5.768	4.901f	684217	494710	1.351	1.756 #
27)	Chlordane-5	0.000	5.751f	0	259890	N.D.	2.675 #

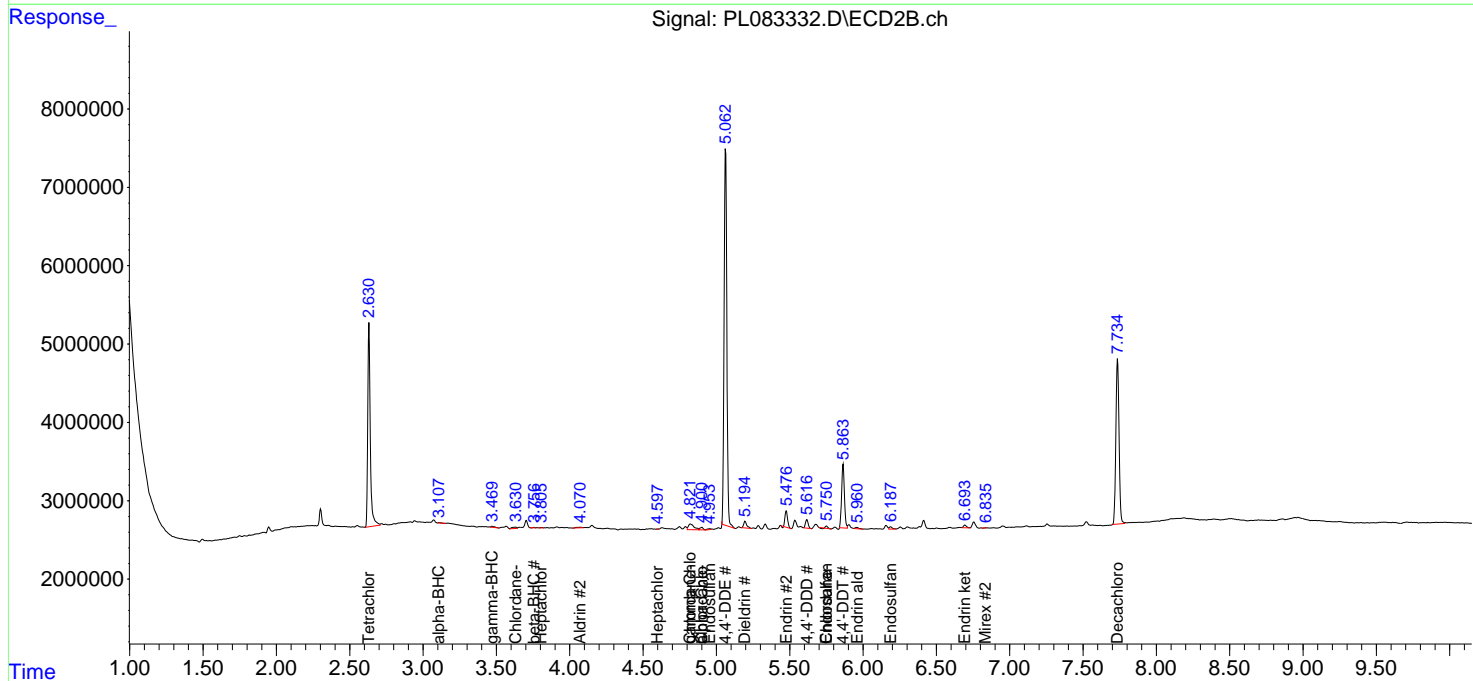
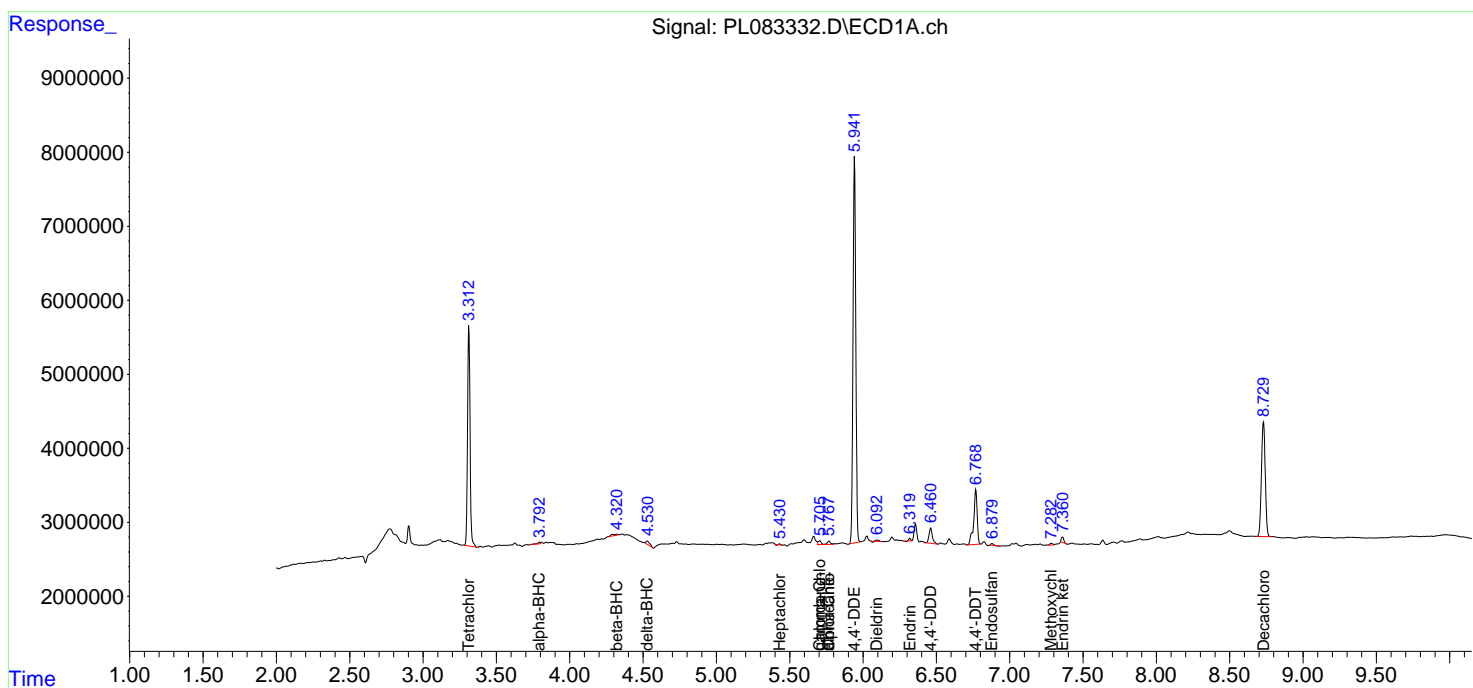
(f)=RT Delta > 1/2 Window (#)=Amounts differ by > 25% (m)=manual int.

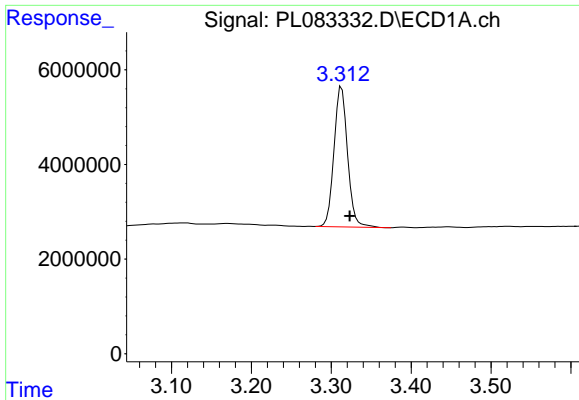
Data Path : Z:\pestpcbsrv\HPCHEM1\ECD_L\Data\PL060823\
 Data File : PL083332.D
 Signal(s) : Signal #1: ECD1A.ch Signal #2: ECD2B.ch
 Acq On : 08 Jun 2023 17:58
 Operator : AR\AJ
 Sample : 03069-04
 Misc :
 ALS Vial : 20 Sample Multiplier: 1

Instrument :
 ECD_L
 ClientSampleId :

Integration File signal 1: autoint1.e
 Integration File signal 2: autoint2.e
 Quant Time: Jun 08 21:42:32 2023
 Quant Method : Z:\pestpcbsrv\HPCHEM1\ECD_L\methods\PL051923.M
 Quant Title : GC Extractables
 QLast Update : Sat May 20 04:58:53 2023
 Response via : Initial Calibration
 Integrator: ChemStation

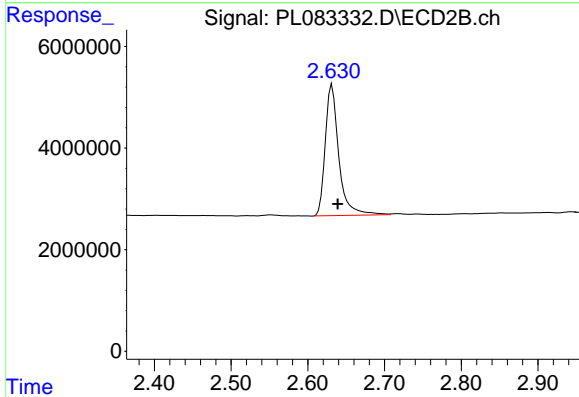
Volume Inj. : 1 µl
 Signal #1 Phase : ZB-MR2 Signal #2 Phase: ZB-MR1
 Signal #1 Info : 30M x 0.32mm x0.2 Signal #2 Info : 30M x 0.32mm x0.5µm



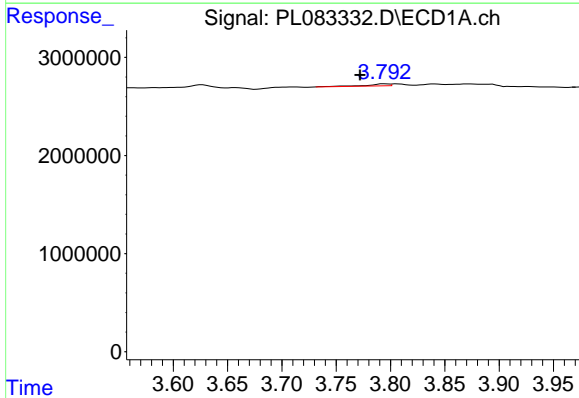


#1 Tetrachloro-m-xylene
 R.T.: 3.313 min
 Delta R.T.: -0.010 min
 Response: 34972029
 Conc: 11.90 ng/ml

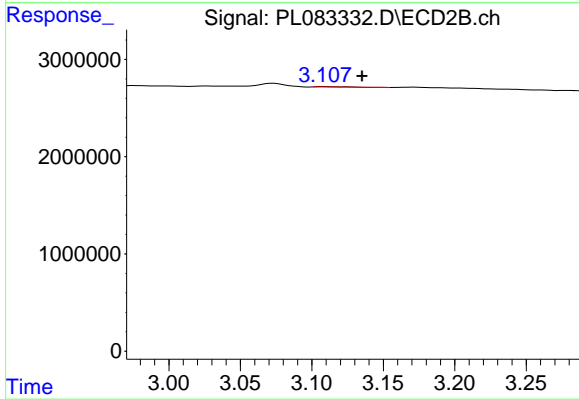
Instrument :
 ECD_L
 ClientSampleId :



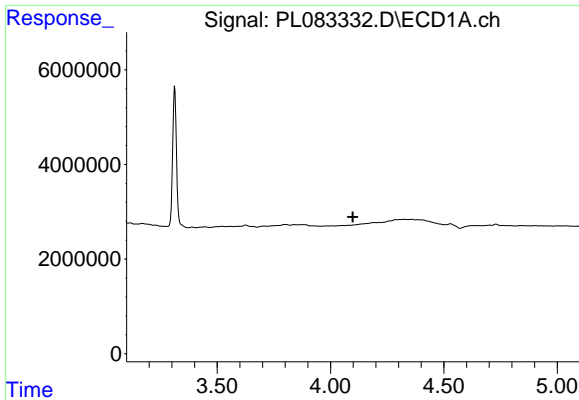
#1 Tetrachloro-m-xylene
 R.T.: 2.632 min
 Delta R.T.: -0.007 min
 Response: 31699435
 Conc: 12.21 ng/ml



#2 alpha-BHC
 R.T.: 3.794 min
 Delta R.T.: 0.022 min
 Response: 286576
 Conc: 0.06 ng/ml



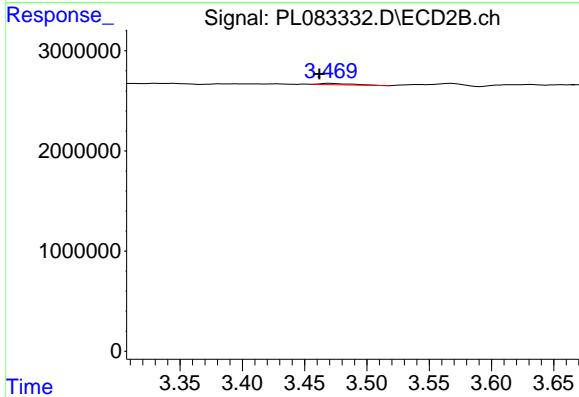
#2 alpha-BHC
 R.T.: 3.109 min
 Delta R.T.: -0.026 min
 Response: 55972
 Conc: 0.01 ng/ml



#3 gamma-BHC (Lindane)

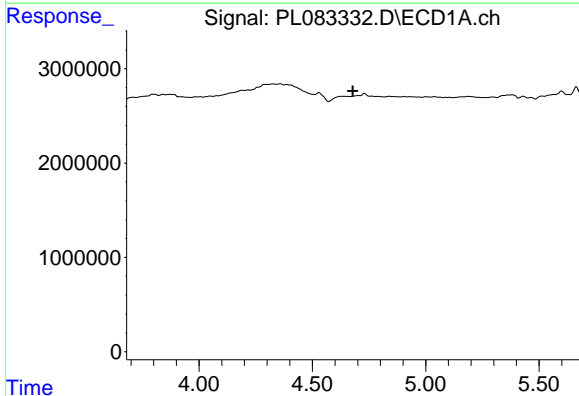
R.T.: 0.000 min
 Exp R.T.: 4.099 min
 Response: 0
 Conc: N.D.

Instrument :
 ECD_L
 ClientSampleId :



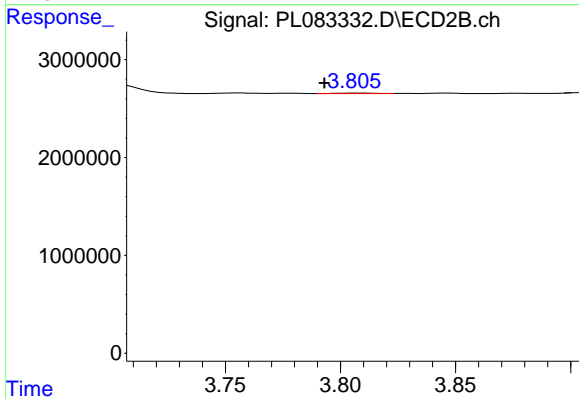
#3 gamma-BHC (Lindane)

R.T.: 3.470 min
 Delta R.T.: 0.008 min
 Response: 243748
 Conc: 0.07 ng/ml



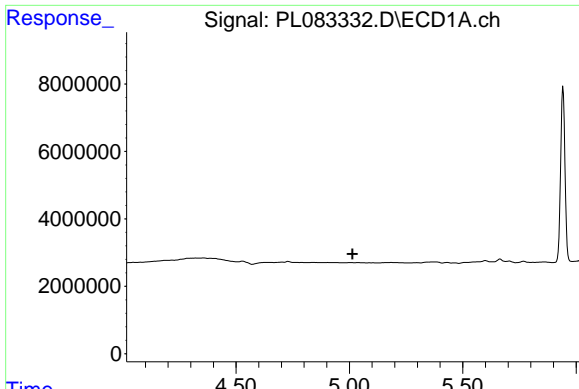
#4 Heptachlor

R.T.: 0.000 min
 Exp R.T.: 4.678 min
 Response: 0
 Conc: N.D.



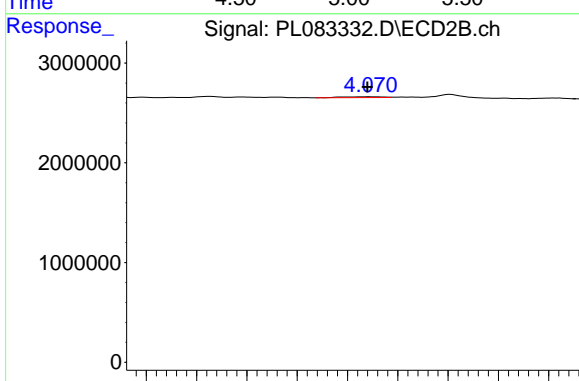
#4 Heptachlor

R.T.: 3.807 min
 Delta R.T.: 0.013 min
 Response: 60553
 Conc: 0.02 ng/ml

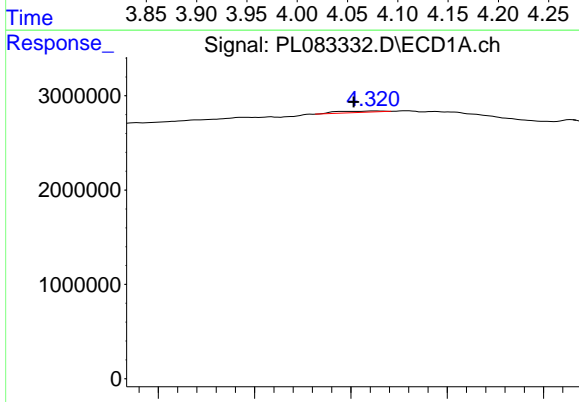


#5 Aldrin
 R.T.: 0.000 min
 Exp R.T.: 5.014 min
 Response: 0
 Conc: N.D.

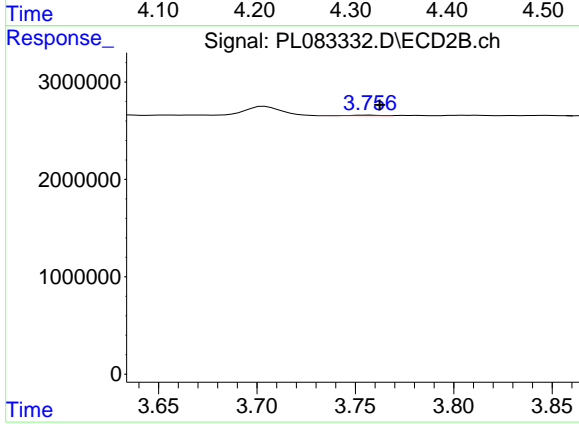
Instrument :
 ECD_L
 ClientSampleId :



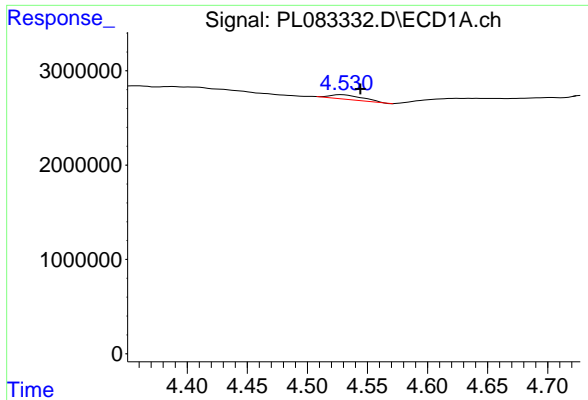
#5 Aldrin
 R.T.: 4.073 min
 Delta R.T.: 0.003 min
 Response: 215506
 Conc: 0.07 ng/ml



#6 beta-BHC
 R.T.: 4.322 min
 Delta R.T.: 0.019 min
 Response: 495386
 Conc: 0.26 ng/ml

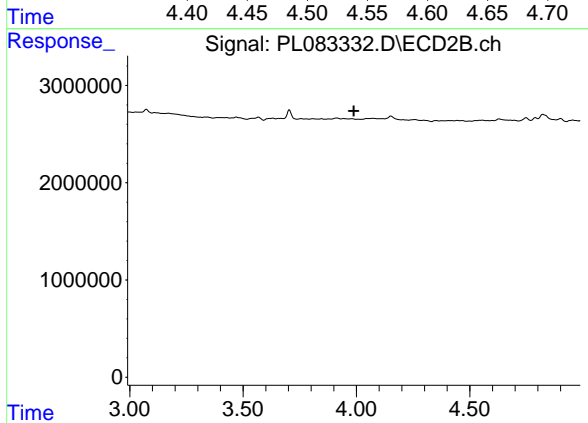


#6 beta-BHC
 R.T.: 3.757 min
 Delta R.T.: -0.005 min
 Response: 27009
 Conc: 0.02 ng/ml

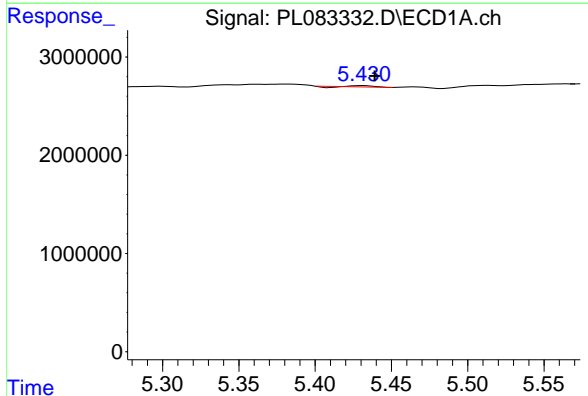


#7 delta-BHC
 R.T.: 4.529 min
 Delta R.T.: -0.015 min
 Response: 899791
 Conc: 0.26 ng/ml

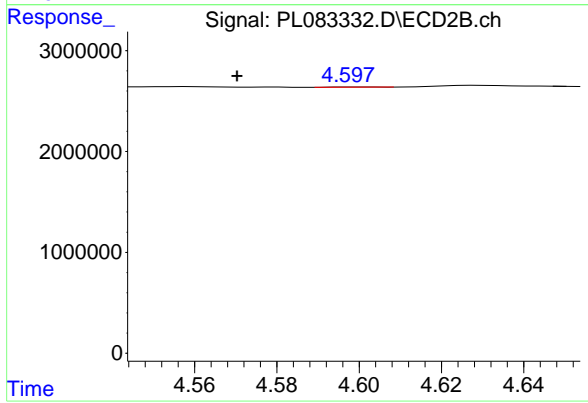
Instrument :
 ECD_L
 ClientSampleId :



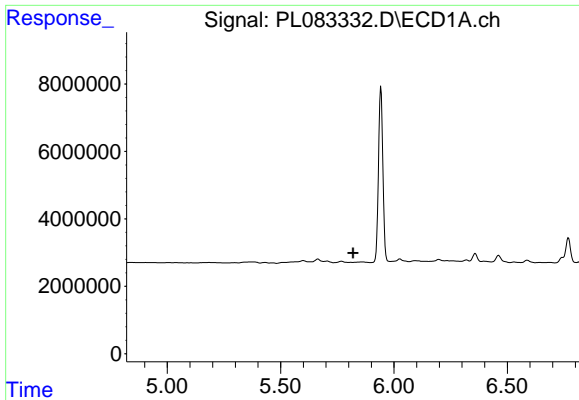
#7 delta-BHC
 R.T.: 0.000 min
 Exp R.T. : 3.988 min
 Response: 0
 Conc: N.D.



#8 Heptachlor epoxide
 R.T.: 5.431 min
 Delta R.T.: -0.008 min
 Response: 53905
 Conc: 0.02 ng/ml



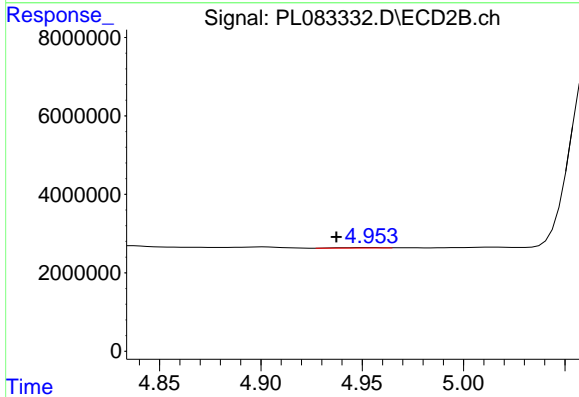
#8 Heptachlor epoxide
 R.T.: 4.598 min
 Delta R.T.: 0.028 min
 Response: 13864
 Conc: 0.00 ng/ml



#9 Endosulfan I

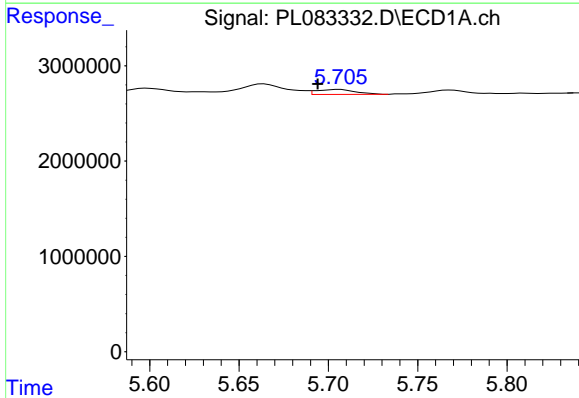
R.T.: 0.000 min
 Exp R.T.: 5.820 min
 Response: 0
 Conc: N.D.

Instrument :
 ECD_L
 ClientSampleId :



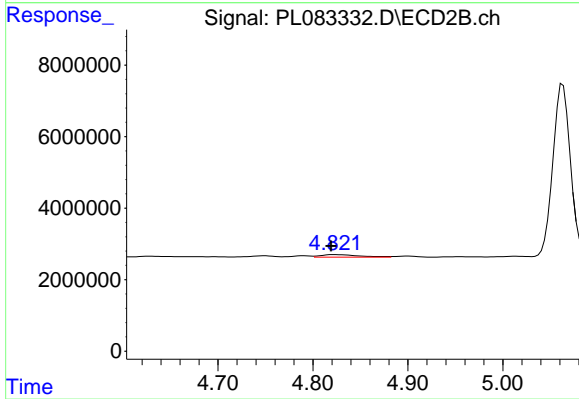
#9 Endosulfan I

R.T.: 4.955 min
 Delta R.T.: 0.018 min
 Response: 178894
 Conc: 0.06 ng/ml



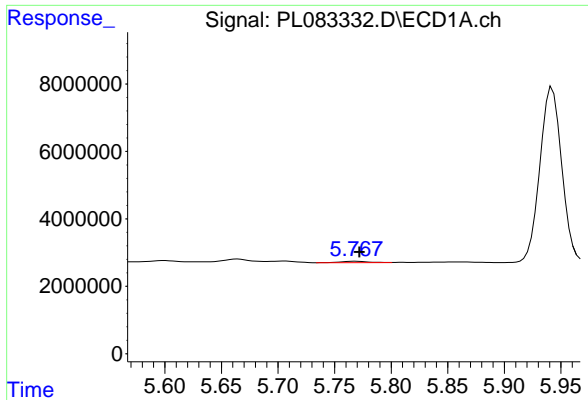
#10 gamma-Chlordane

R.T.: 5.706 min
 Delta R.T.: 0.012 min
 Response: 781323
 Conc: 0.25 ng/ml



#10 gamma-Chlordane

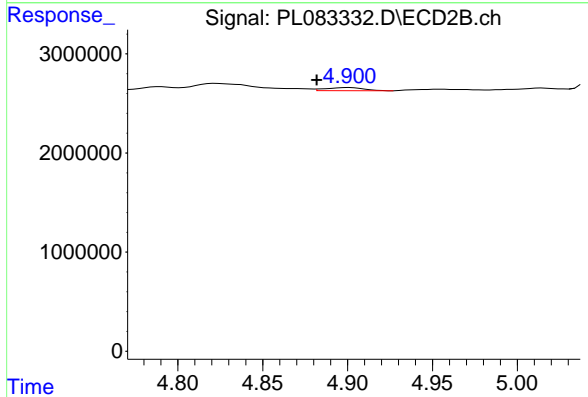
R.T.: 4.822 min
 Delta R.T.: 0.003 min
 Response: 1978031
 Conc: 0.66 ng/ml



#11 alpha-Chlordane

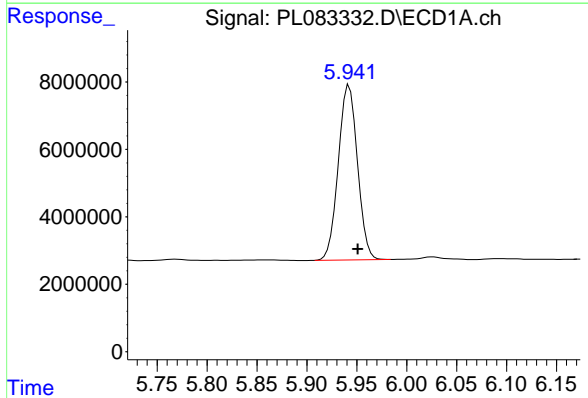
R.T.: 5.768 min
Delta R.T.: -0.004 min
Response: 684217
Conc: 0.21 ng/ml

Instrument :
ECD_L
ClientSampleId :



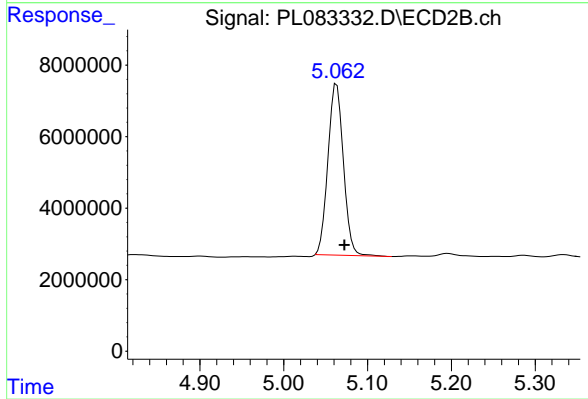
#11 alpha-Chlordane

R.T.: 4.901 min
Delta R.T.: 0.019 min
Response: 494710
Conc: 0.16 ng/ml



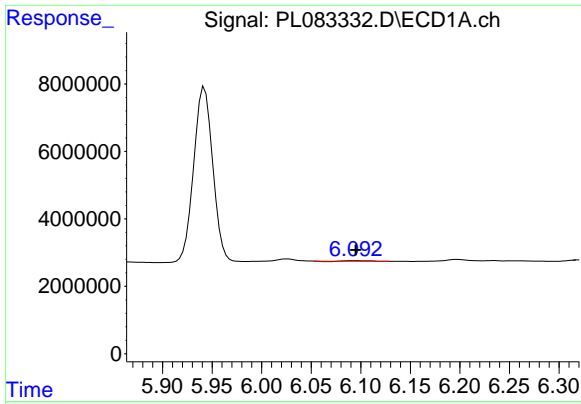
#12 4,4'-DDE

R.T.: 5.942 min
Delta R.T.: -0.009 min
Response: 69348319
Conc: 25.16 ng/ml



#12 4,4'-DDE

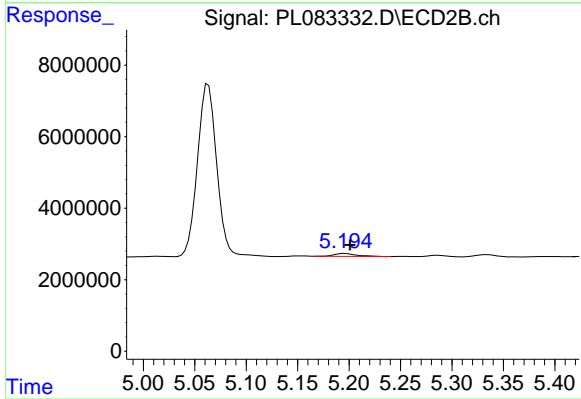
R.T.: 5.063 min
Delta R.T.: -0.009 min
Response: 61360349
Conc: 25.26 ng/ml



#13 Dieldrin

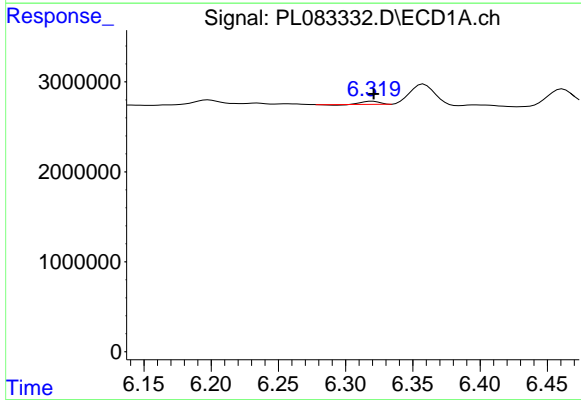
R.T.: 6.093 min
 Delta R.T.: -0.002 min
 Response: 194998
 Conc: 0.06 ng/ml

Instrument :
 ECD_L
 ClientSampleId :



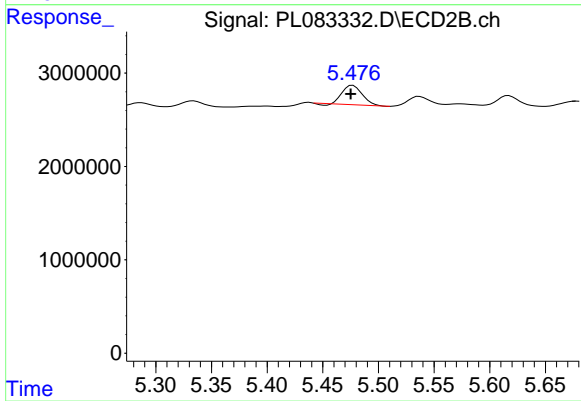
#13 Dieldrin

R.T.: 5.196 min
 Delta R.T.: -0.006 min
 Response: 1242681
 Conc: 0.44 ng/ml



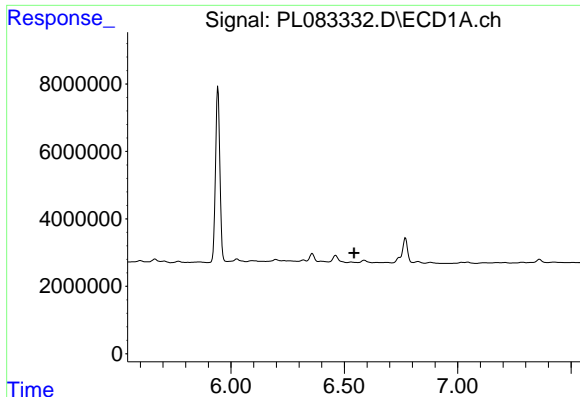
#14 Endrin

R.T.: 6.320 min
 Delta R.T.: 0.000 min
 Response: 272014
 Conc: 0.10 ng/ml



#14 Endrin

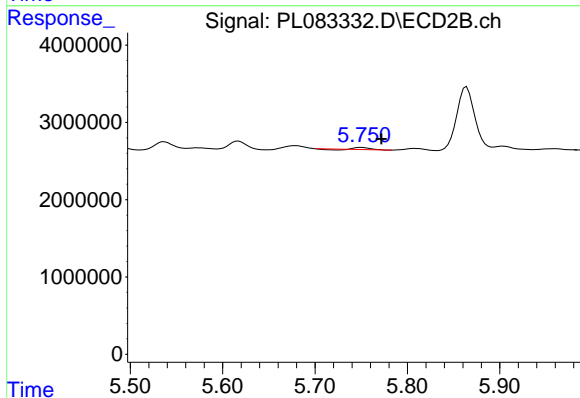
R.T.: 5.477 min
 Delta R.T.: 0.002 min
 Response: 2519238
 Conc: 0.99 ng/ml



#15 Endosulfan II

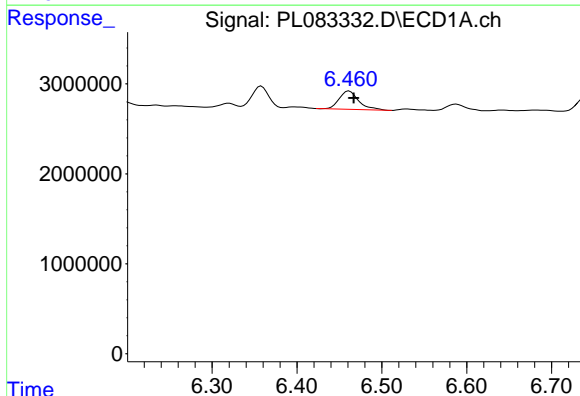
R.T.: 6.529 min
 Delta R.T.: -0.014 min
 Response: 194789
 Conc: N.D.

Instrument :
 ECD_L
 ClientSampleId :



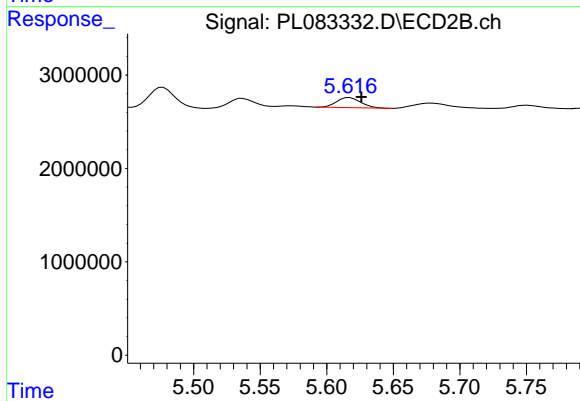
#15 Endosulfan II

R.T.: 5.751 min
 Delta R.T.: -0.021 min
 Response: 259890
 Conc: 0.11 ng/ml



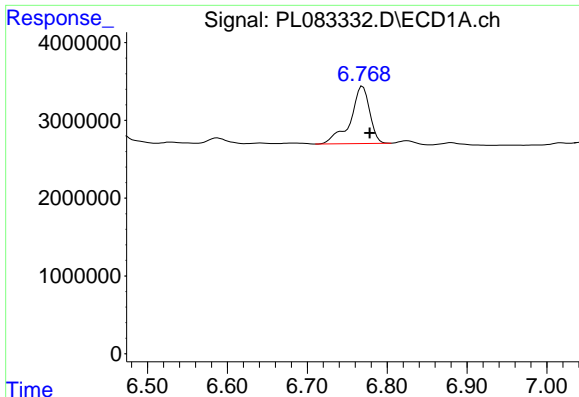
#16 4,4'-DDD

R.T.: 6.462 min
 Delta R.T.: -0.005 min
 Response: 3224522
 Conc: 1.48 ng/ml



#16 4,4'-DDD

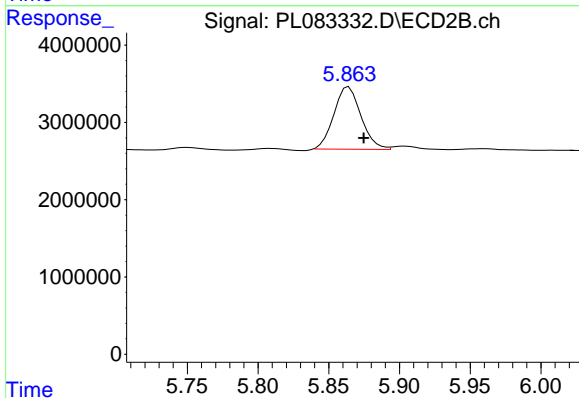
R.T.: 5.617 min
 Delta R.T.: -0.009 min
 Response: 1361062
 Conc: 0.71 ng/ml



#17 4,4'-DDT

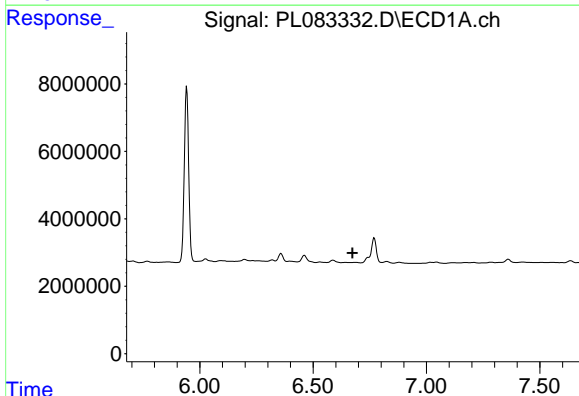
R.T.: 6.769 min
 Delta R.T.: -0.009 min
 Response: 12316516
 Conc: 4.92 ng/ml

Instrument :
 ECD_L
 ClientSampleId :



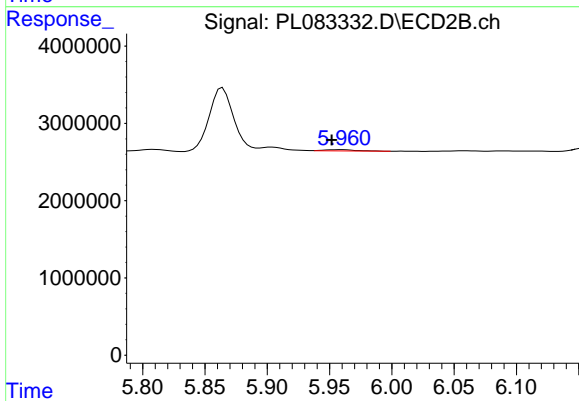
#17 4,4'-DDT

R.T.: 5.864 min
 Delta R.T.: -0.010 min
 Response: 10763270
 Conc: 4.82 ng/ml



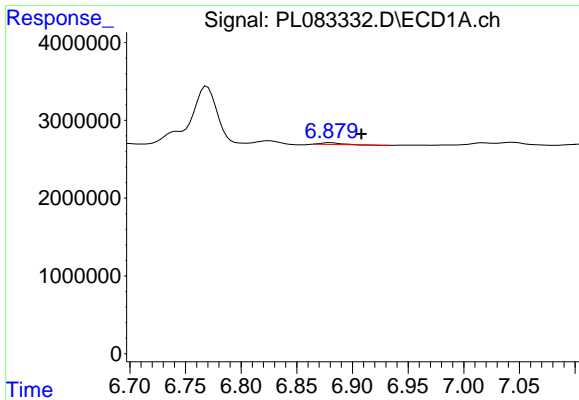
#18 Endrin aldehyde

R.T.: 0.000 min
 Exp R.T. : 6.674 min
 Response: 0
 Conc: N.D.



#18 Endrin aldehyde

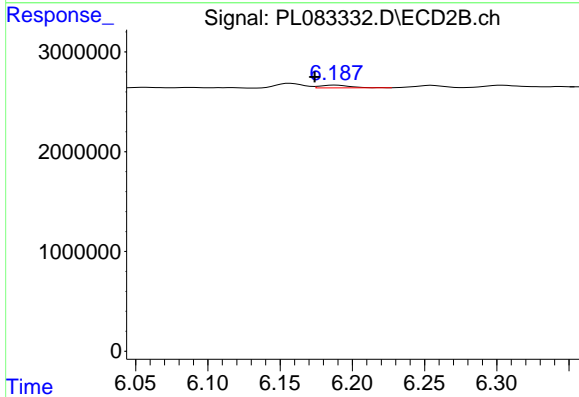
R.T.: 5.961 min
 Delta R.T.: 0.009 min
 Response: 294767
 Conc: 0.15 ng/ml



#19 Endosulfan Sulfate

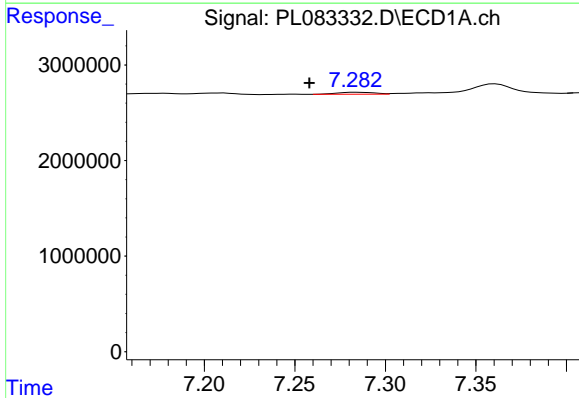
R.T.: 6.880 min
 Delta R.T.: -0.028 min
 Response: 300453
 Conc: 0.12 ng/ml

Instrument :
 ECD_L
 ClientSampleId :



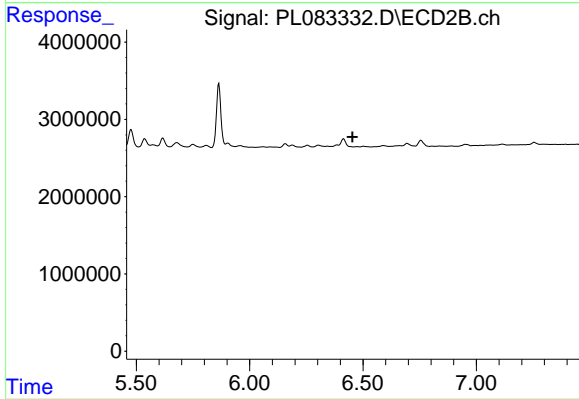
#19 Endosulfan Sulfate

R.T.: 6.189 min
 Delta R.T.: 0.015 min
 Response: 412322
 Conc: 0.17 ng/ml



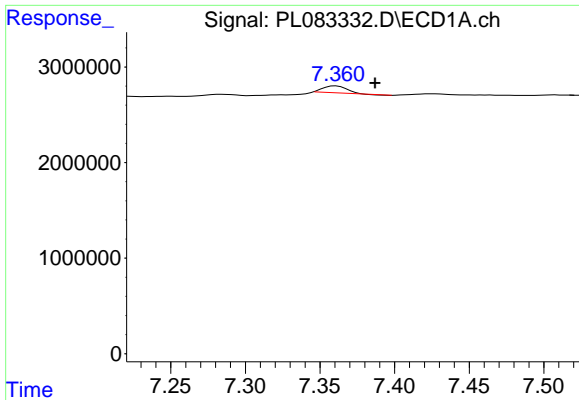
#20 Methoxychlor

R.T.: 7.284 min
 Delta R.T.: 0.026 min
 Response: 304161
 Conc: 0.23 ng/ml



#20 Methoxychlor

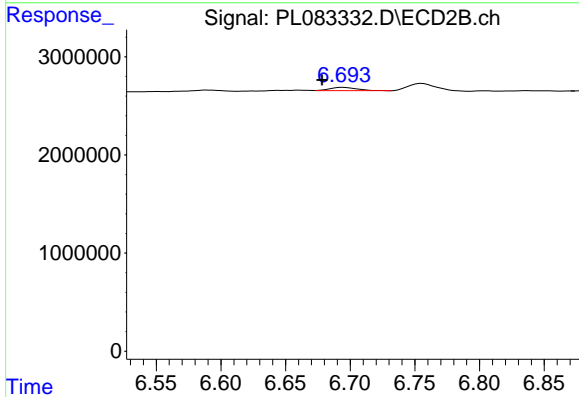
R.T.: 0.000 min
 Exp R.T.: 6.454 min
 Response: 0
 Conc: N.D.



#21 Endrin ketone

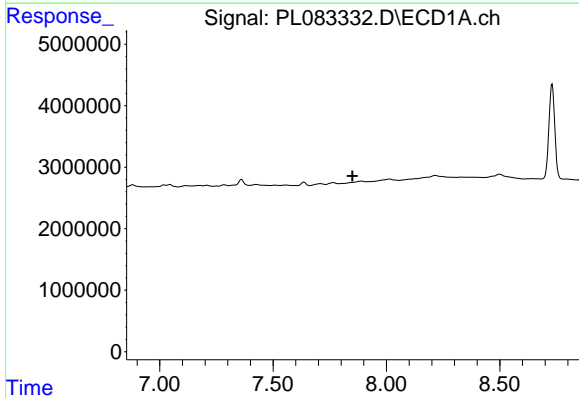
R.T.: 7.361 min
 Delta R.T.: -0.026 min
 Response: 800956
 Conc: 0.31 ng/ml

Instrument :
 ECD_L
 ClientSampleId :



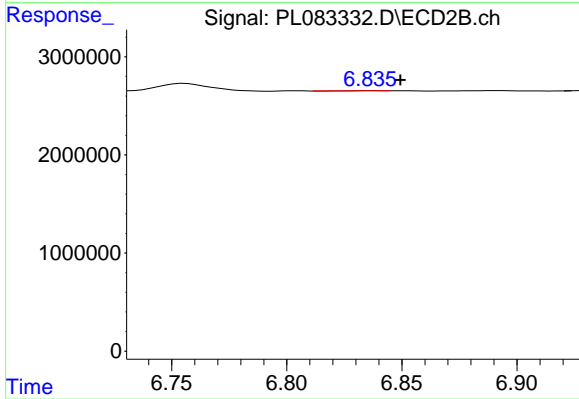
#21 Endrin ketone

R.T.: 6.694 min
 Delta R.T.: 0.016 min
 Response: 476308
 Conc: 0.18 ng/ml



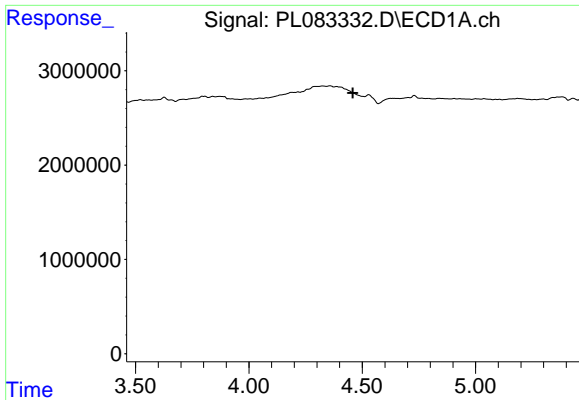
#22 Mirex

R.T.: 0.000 min
 Exp R.T. : 7.851 min
 Response: 0
 Conc: N.D.



#22 Mirex

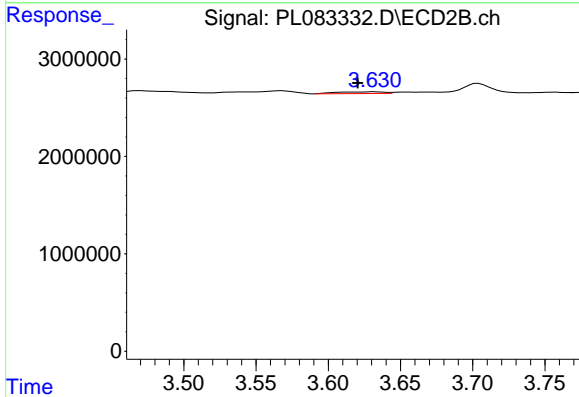
R.T.: 6.837 min
 Delta R.T.: -0.013 min
 Response: 9075
 Conc: 0.00 ng/ml



#23 Chlordane-1

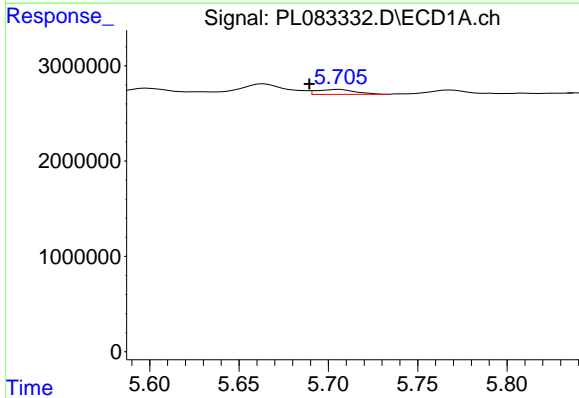
R.T.: 0.000 min
 Exp R.T.: 4.458 min
 Response: 0
 Conc: N.D.

Instrument :
 ECD_L
 ClientSampleId :



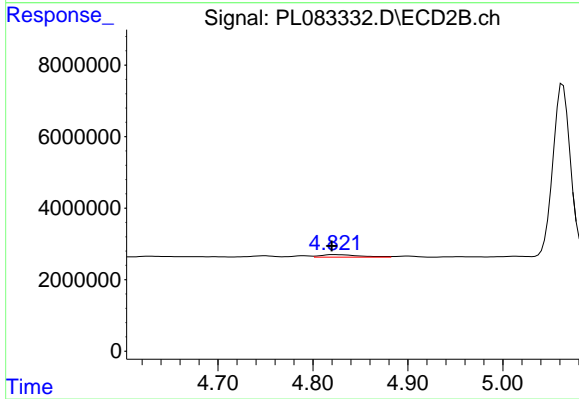
#23 Chlordane-1

R.T.: 3.632 min
 Delta R.T.: 0.011 min
 Response: 409377
 Conc: 4.96 ng/ml



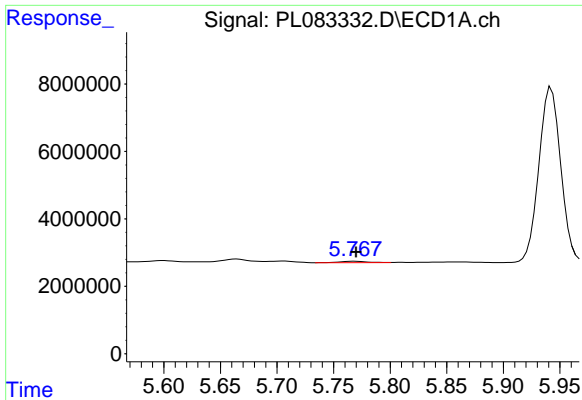
#25 Chlordane-3

R.T.: 5.706 min
 Delta R.T.: 0.017 min
 Response: 781323
 Conc: 1.88 ng/ml



#25 Chlordane-3

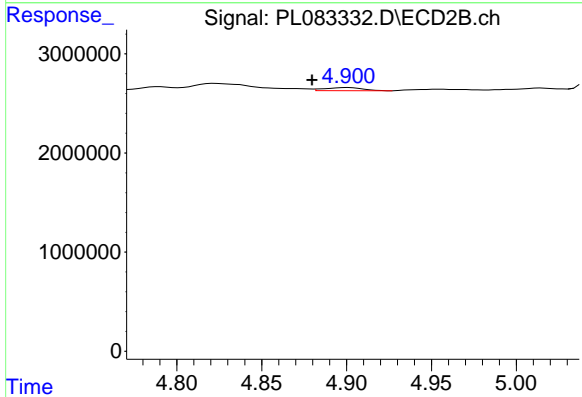
R.T.: 4.822 min
 Delta R.T.: 0.003 min
 Response: 1978031
 Conc: 7.42 ng/ml



#26 Chlordane-4

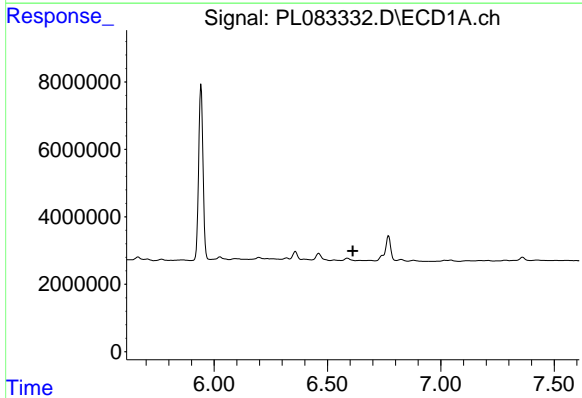
R.T.: 5.768 min
 Delta R.T.: -0.001 min
 Response: 684217
 Conc: 1.35 ng/ml

Instrument :
 ECD_L
 ClientSampleId :



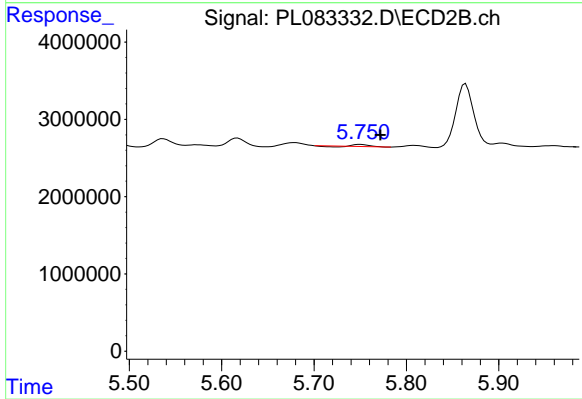
#26 Chlordane-4

R.T.: 4.901 min
 Delta R.T.: 0.021 min
 Response: 494710
 Conc: 1.76 ng/ml



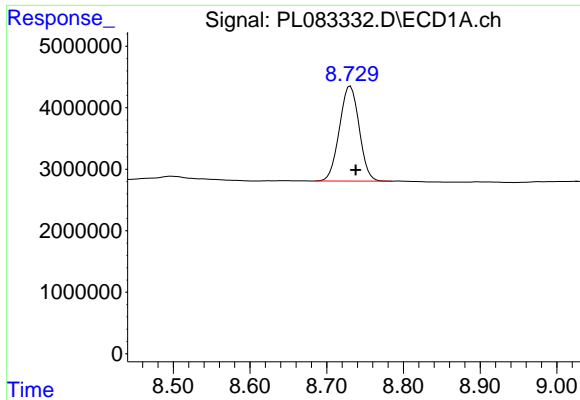
#27 Chlordane-5

R.T.: 0.000 min
 Exp R.T. : 6.612 min
 Response: 0
 Conc: N.D.



#27 Chlordane-5

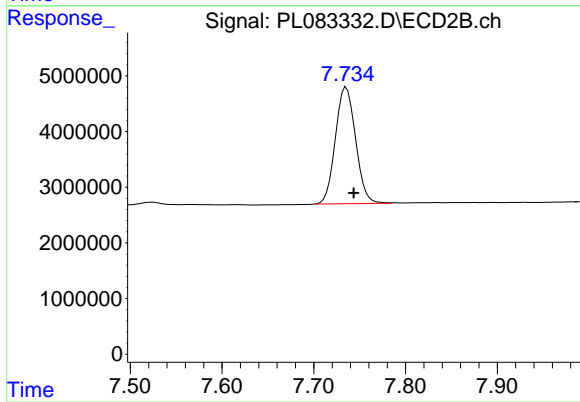
R.T.: 5.751 min
 Delta R.T.: -0.021 min
 Response: 259890
 Conc: 2.68 ng/ml



#28 Decachlorobiphenyl

R.T.: 8.731 min
Delta R.T.: -0.007 min
Response: 27677016
Conc: 13.20 ng/ml

Instrument :
ECD_L
ClientSampleId :



#28 Decachlorobiphenyl

R.T.: 7.736 min
Delta R.T.: -0.008 min
Response: 32095178
Conc: 12.91 ng/ml