

Data Path : Z:\pestpcbsrv\HPCHEM1\ECD_L\Data\PL060920\
 Data File : PL059191.D
 Signal(s) : Signal #1: ECD1A.ch Signal #2: ECD2B.ch
 Acq On : 09 Jun 2020 13:13
 Operator : AJ\MA
 Sample : L2946-05 5X
 Misc :
 ALS Vial : 7 Sample Multiplier: 1

Instrument :
 ECD_L
 ClientSampled :

Integration File signal 1: autoint1.e
 Integration File signal 2: autoint2.e
 Quant Time: Jun 09 15:01:15 2020
 Quant Method : Z:\pestpcbsrv\HPCHEM1\ECD_L\methods\PL060320.M
 Quant Title : GC Extractables
 QLast Update : Thu Jun 04 08:16:22 2020
 Response via : Initial Calibration
 Integrator: ChemStation

Volume Inj. : 1 µl
 Signal #1 Phase : ZB-MR2 Signal #2 Phase: ZB-MR1
 Signal #1 Info : 30M x 0.32mm x0.2 Signal #2 Info : 30M x 0.32mm x0.5µm

	Compound	RT#1	RT#2	Resp#1	Resp#2	ng/ml	ng/ml

System Monitoring Compounds							
1)	SA Tetrachlo...	3.522	4.072	5183138	6370793	3.002	2.449
28)	SA Decachlor...	8.296	9.182	478.6E6	633.3E6	291.054	267.155
Target Compounds							
3)	MA gamma-BHC...	4.273f	4.752	251778	207022	0.115	0.057 #
4)	MA Heptachlor	4.559	5.265	1925466	578248	0.925	0.168 #
5)	MB Aldrin	4.806	5.595f	871687	2034792	0.489	0.647 #
6)	B beta-BHC	4.514f	4.891f	2080441	316928	2.189	0.210 #
7)	B delta-BHC	4.716	5.113f	353608	2343793	0.178	0.836 #
8)	B Heptachlo...	5.239	5.950	6400673	15987029	3.747	5.772 #
9)	A Endosulfan I	5.606f	6.330	1964795	899233	1.256	0.321 #
10)	B gamma-Chl...	5.478	6.196	10185400	21230663	6.083	7.096
11)	B alpha-Chl...	5.536	6.271	16472720	26786978	9.874	8.814
12)	B 4,4'-DDE	5.698	6.425	6262556	23058902	4.118	8.284 #
13)	MA Dieldrin	5.825	6.567	8335457	14353192	5.114	4.916
14)	MA Endrin	6.086	6.786	-663010	10516259	N.D.	4.223
15)	B Endosulfa...	6.350	6.991f	5148436	24164029	3.331	9.276 #
16)	A 4,4'-DDD	6.215	6.922	3588781	48445647	2.715	20.873 #
17)	MA 4,4'-DDT	6.453	7.188f	24688879	48475181	19.572	21.287
18)	B Endrin al...	6.548f	7.142	21247265	2210709	16.137	0.967 #
19)	B Endosulfa...	6.743	0.000	231.5E6	0	155.411	N.D. #
20)	A Methoxychlor	6.987f	7.664	119.5E6	6795711	155.514	5.154 #
21)	B Endrin ke...	7.264f	7.819	1051.1E6	86176200	605.364	32.845 #
22)	Mirex	7.430	8.306f	-6224	1103.9E6	N.D.	559.566
23)	Chlordane-1	4.401	5.076	8927552	7987509	177.480	79.059 #
24)	Chlordane-2	4.905	5.547	2942426	4423935	56.390	46.368
25)	Chlordane-3	5.478	6.196	10185400	21230663	68.928	56.617
26)	Chlordane-4	5.536	6.271	16472720	26786978	137.316	58.867 #
27)	Chlordane-5	6.350f	7.096f	5148436	317197	103.459	4.008 #

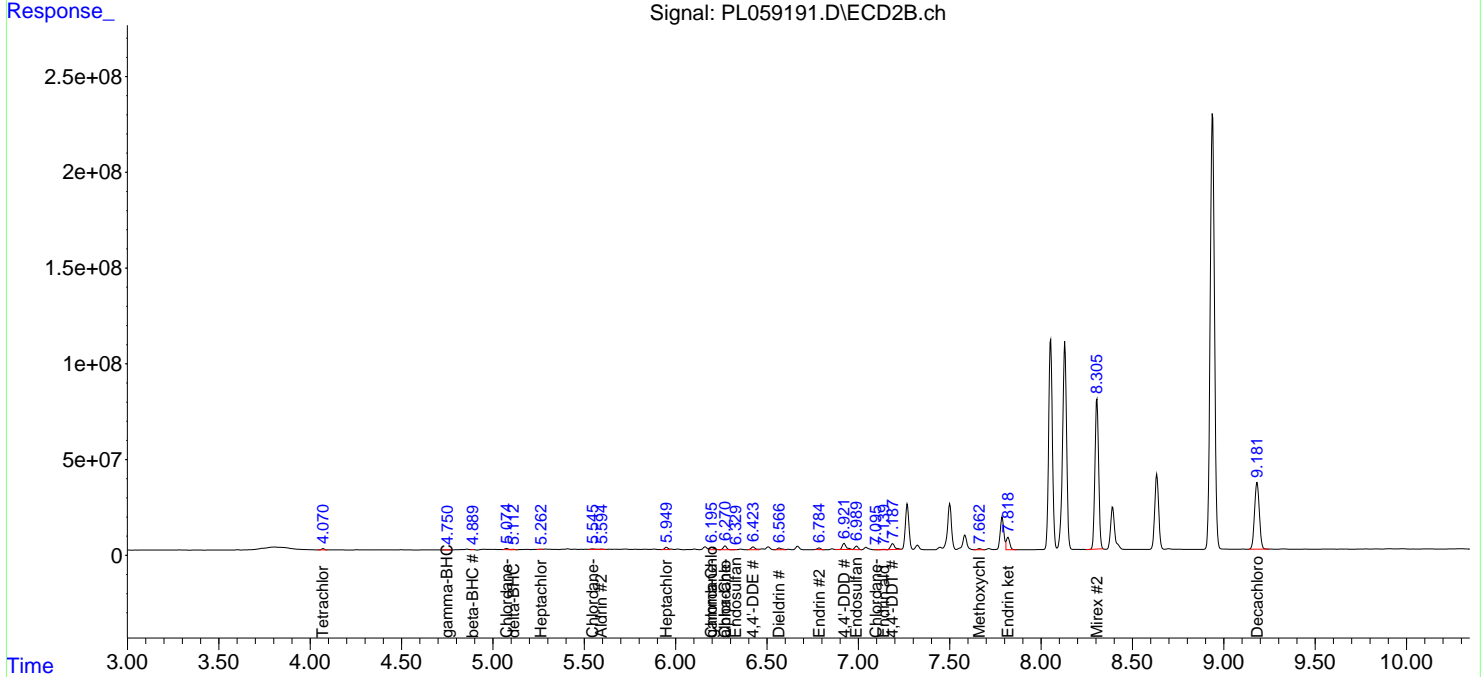
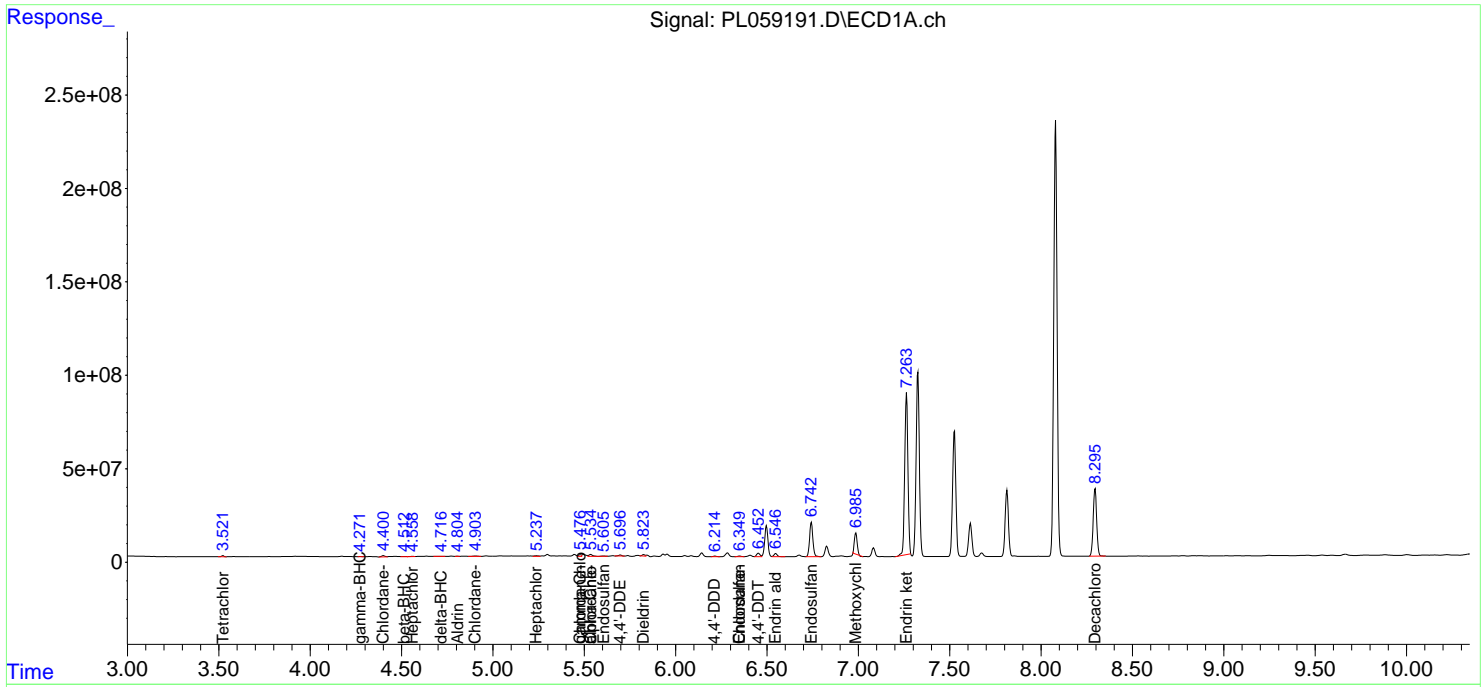
(f)=RT Delta > 1/2 Window (#)=Amounts differ by > 25% (m)=manual int.

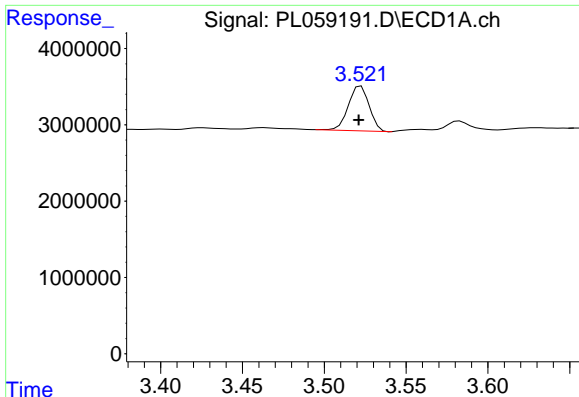
Data Path : Z:\pestpcbsrv\HPCHEM1\ECD_L\Data\PL060920\
 Data File : PL059191.D
 Signal(s) : Signal #1: ECD1A.ch Signal #2: ECD2B.ch
 Acq On : 09 Jun 2020 13:13
 Operator : AJ\MA
 Sample : L2946-05 5X
 Misc :
 ALS Vial : 7 Sample Multiplier: 1

Instrument :
 ECD_L
 ClientSampled :

Integration File signal 1: autoint1.e
 Integration File signal 2: autoint2.e
 Quant Time: Jun 09 15:01:15 2020
 Quant Method : Z:\pestpcbsrv\HPCHEM1\ECD_L\methods\PL060320.M
 Quant Title : GC Extractables
 QLast Update : Thu Jun 04 08:16:22 2020
 Response via : Initial Calibration
 Integrator: ChemStation

Volume Inj. : 1 µl
 Signal #1 Phase : ZB-MR2 Signal #2 Phase: ZB-MR1
 Signal #1 Info : 30M x 0.32mm x0.2 Signal #2 Info : 30M x 0.32mm x0.5µm

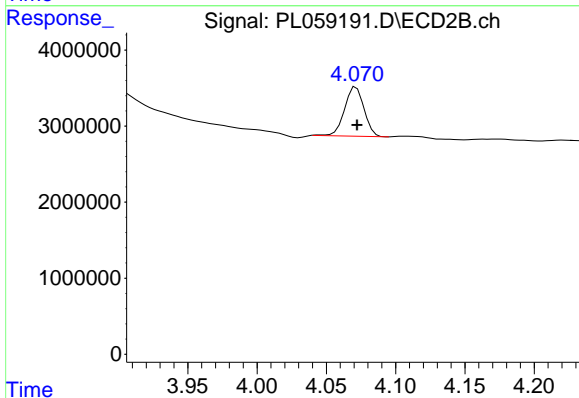




#1 Tetrachloro-m-xylene

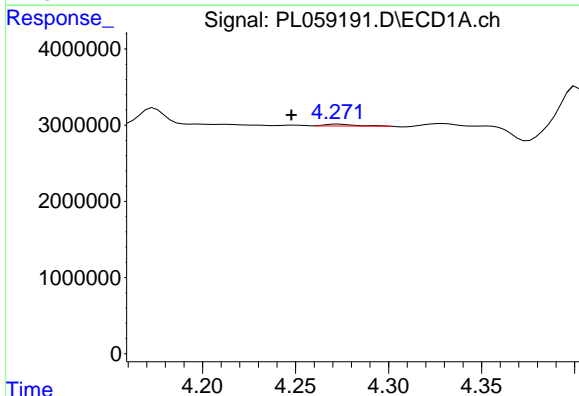
R.T.: 3.522 min
 Delta R.T.: 0.001 min
 Response: 5183138
 Conc: 3.00 ng/ml

Instrument :
 ECD_L
 ClientSampleId :



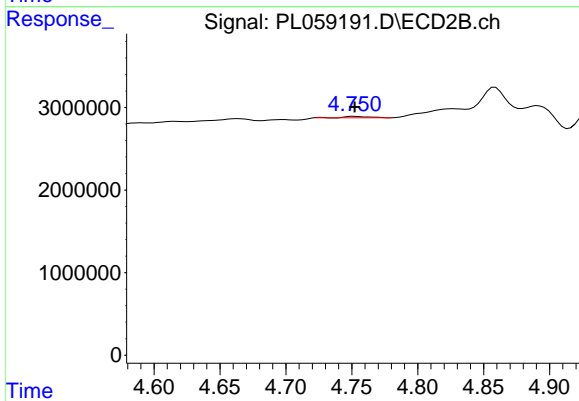
#1 Tetrachloro-m-xylene

R.T.: 4.072 min
 Delta R.T.: 0.000 min
 Response: 6370793
 Conc: 2.45 ng/ml



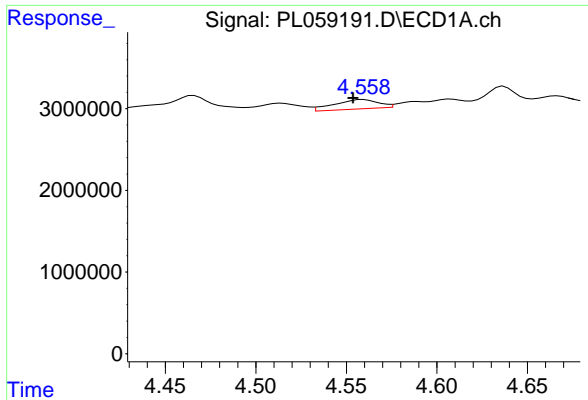
#3 gamma-BHC (Lindane)

R.T.: 4.273 min
 Delta R.T.: 0.025 min
 Response: 251778
 Conc: 0.11 ng/ml



#3 gamma-BHC (Lindane)

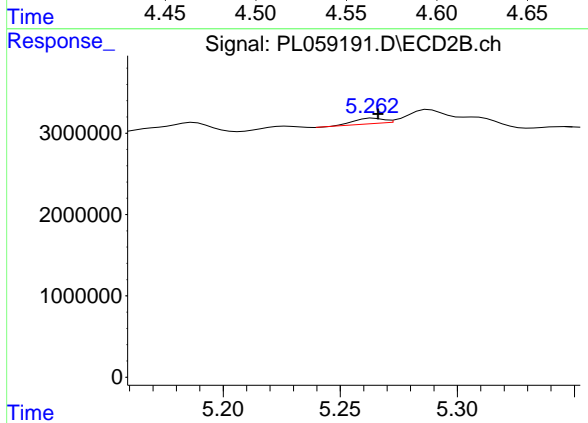
R.T.: 4.752 min
 Delta R.T.: 0.000 min
 Response: 207022
 Conc: 0.06 ng/ml



#4 Heptachlor

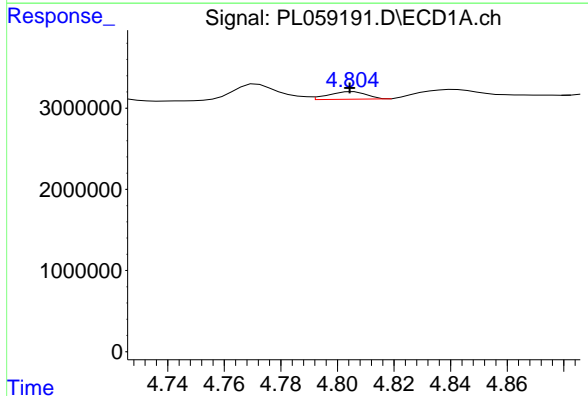
R.T.: 4.559 min
 Delta R.T.: 0.006 min
 Response: 1925466
 Conc: 0.93 ng/ml

Instrument :
 ECD_L
 ClientSampleId :



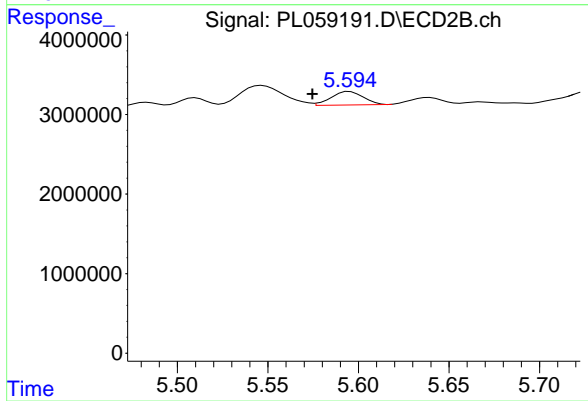
#4 Heptachlor

R.T.: 5.265 min
 Delta R.T.: -0.002 min
 Response: 578248
 Conc: 0.17 ng/ml



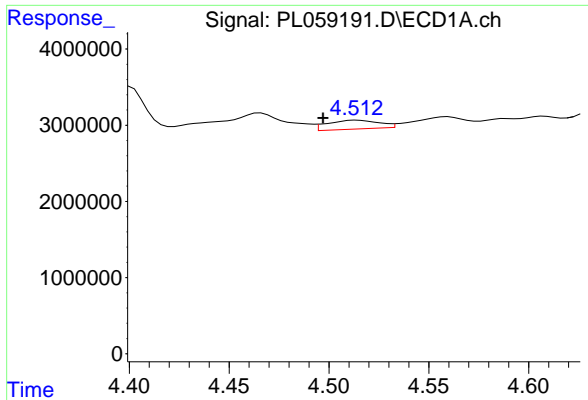
#5 Aldrin

R.T.: 4.806 min
 Delta R.T.: 0.001 min
 Response: 871687
 Conc: 0.49 ng/ml



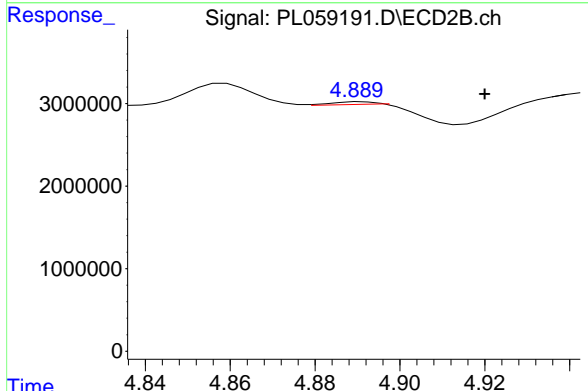
#5 Aldrin

R.T.: 5.595 min
 Delta R.T.: 0.021 min
 Response: 2034792
 Conc: 0.65 ng/ml

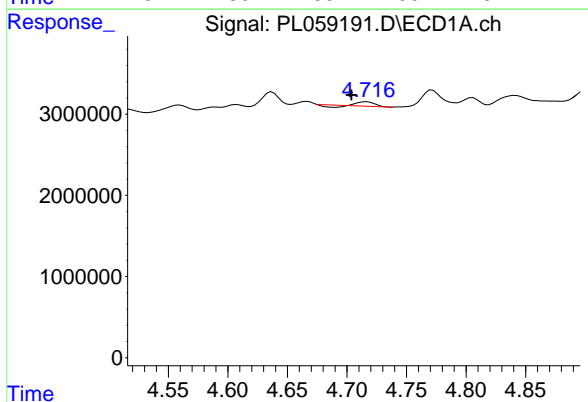


#6 beta-BHC
 R.T.: 4.514 min
 Delta R.T.: 0.017 min
 Response: 2080441
 Conc: 2.19 ng/ml

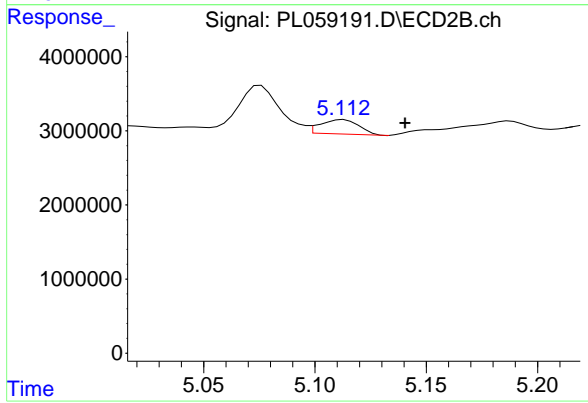
Instrument :
 ECD_L
 ClientSampleId :



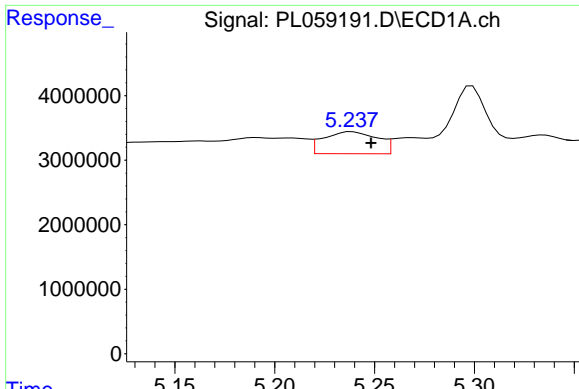
#6 beta-BHC
 R.T.: 4.891 min
 Delta R.T.: -0.029 min
 Response: 316928
 Conc: 0.21 ng/ml



#7 delta-BHC
 R.T.: 4.716 min
 Delta R.T.: 0.013 min
 Response: 353608
 Conc: 0.18 ng/ml



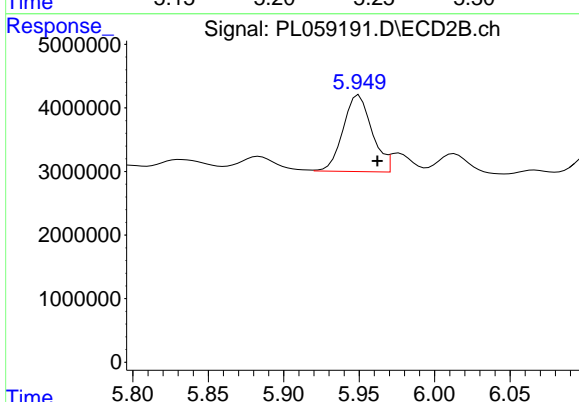
#7 delta-BHC
 R.T.: 5.113 min
 Delta R.T.: -0.028 min
 Response: 2343793
 Conc: 0.84 ng/ml



#8 Heptachlor epoxide

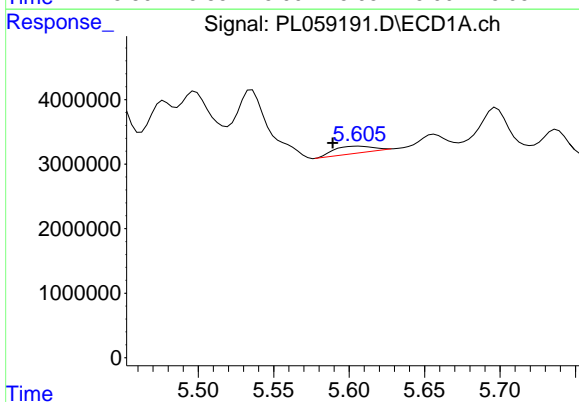
R.T.: 5.239 min
 Delta R.T.: -0.010 min
 Response: 6400673
 Conc: 3.75 ng/ml

Instrument :
 ECD_L
 ClientSampled :



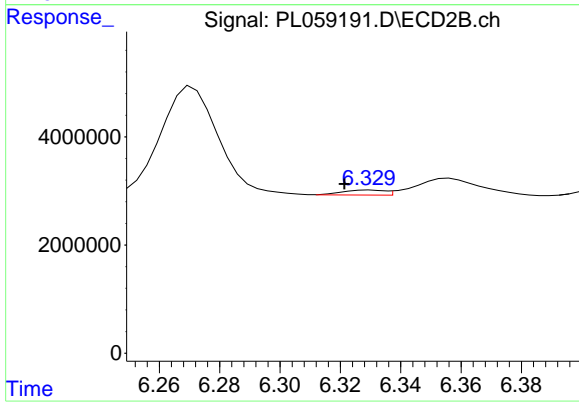
#8 Heptachlor epoxide

R.T.: 5.950 min
 Delta R.T.: -0.012 min
 Response: 15987029
 Conc: 5.77 ng/ml



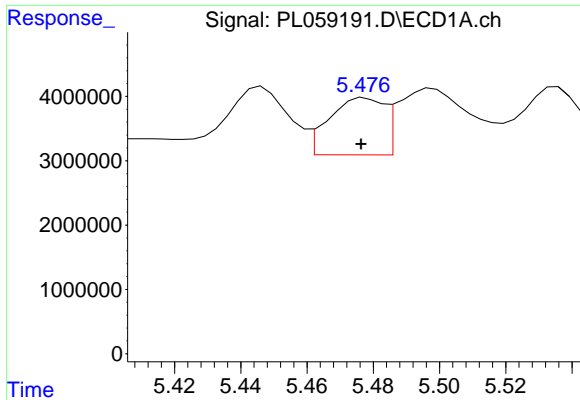
#9 Endosulfan I

R.T.: 5.606 min
 Delta R.T.: 0.017 min
 Response: 1964795
 Conc: 1.26 ng/ml



#9 Endosulfan I

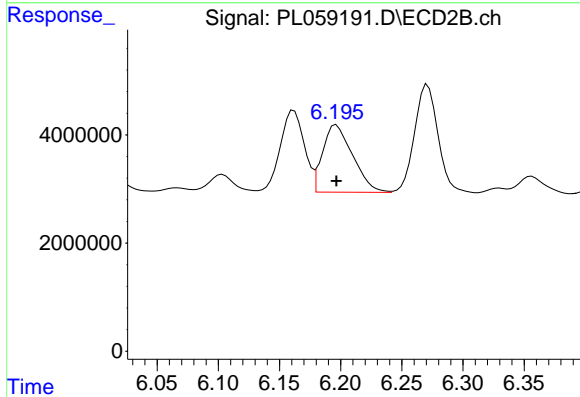
R.T.: 6.330 min
 Delta R.T.: 0.009 min
 Response: 899233
 Conc: 0.32 ng/ml



#10 gamma-Chlordane

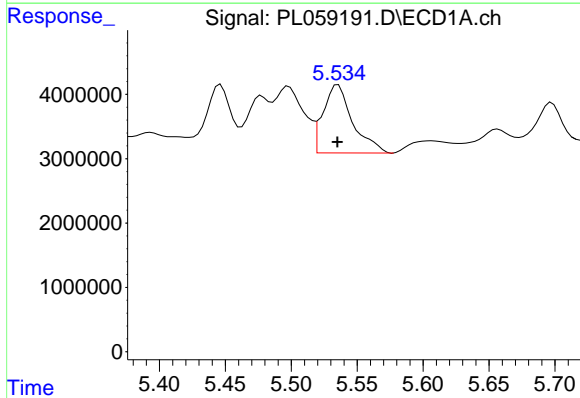
R.T.: 5.478 min
 Delta R.T.: 0.001 min
 Response: 10185400
 Conc: 6.08 ng/ml

Instrument :
 ECD_L
 ClientSampled :



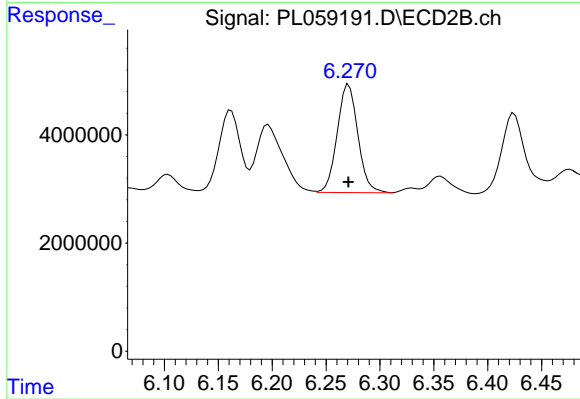
#10 gamma-Chlordane

R.T.: 6.196 min
 Delta R.T.: 0.000 min
 Response: 21230663
 Conc: 7.10 ng/ml



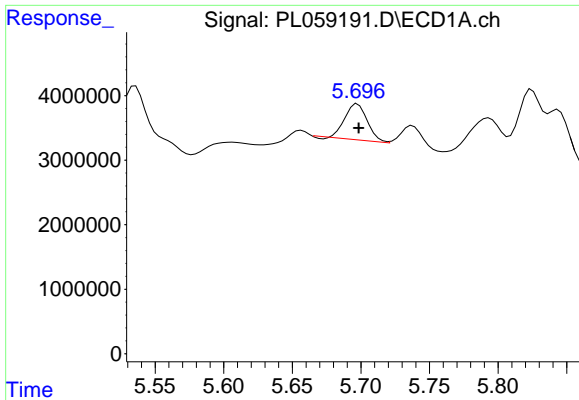
#11 alpha-Chlordane

R.T.: 5.536 min
 Delta R.T.: 0.000 min
 Response: 16472720
 Conc: 9.87 ng/ml



#11 alpha-Chlordane

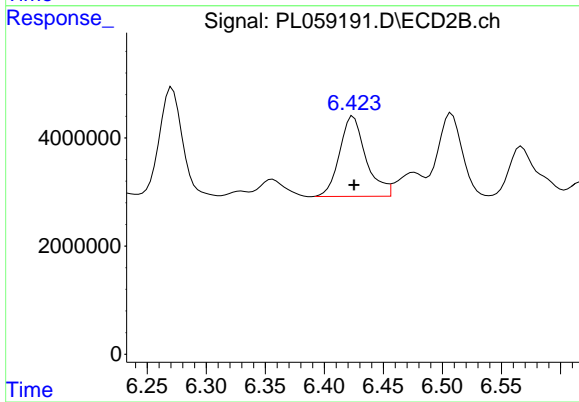
R.T.: 6.271 min
 Delta R.T.: 0.000 min
 Response: 26786978
 Conc: 8.81 ng/ml



#12 4,4'-DDE

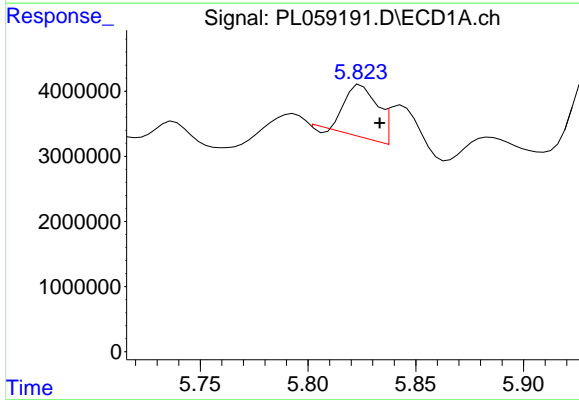
R.T.: 5.698 min
Delta R.T.: 0.000 min
Response: 6262556
Conc: 4.12 ng/ml

Instrument :
ECD_L
ClientSampled :



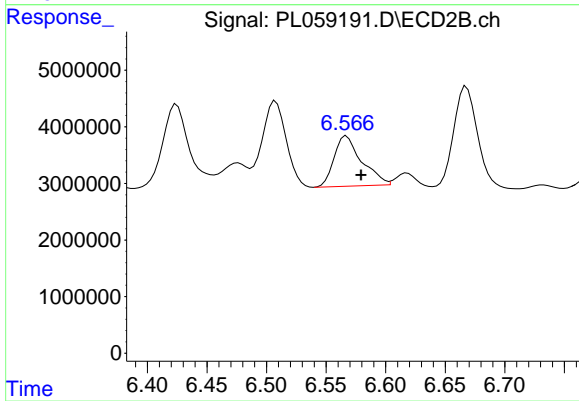
#12 4,4'-DDE

R.T.: 6.425 min
Delta R.T.: 0.000 min
Response: 23058902
Conc: 8.28 ng/ml



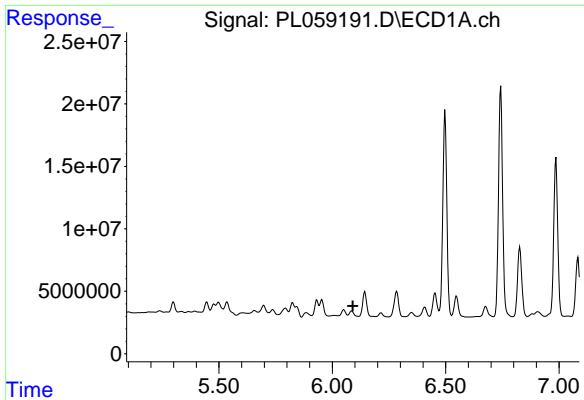
#13 Dieldrin

R.T.: 5.825 min
Delta R.T.: -0.009 min
Response: 8335457
Conc: 5.11 ng/ml



#13 Dieldrin

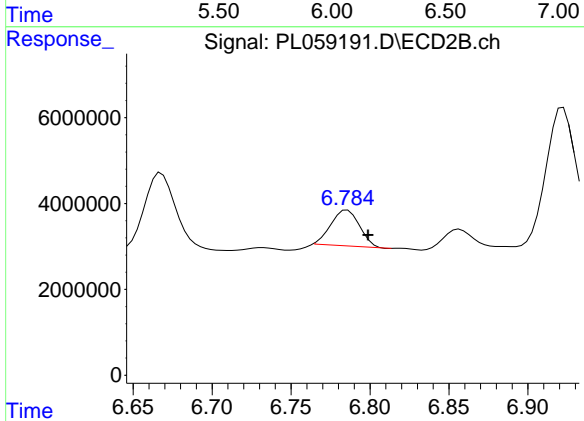
R.T.: 6.567 min
Delta R.T.: -0.012 min
Response: 14353192
Conc: 4.92 ng/ml



#14 Endrin

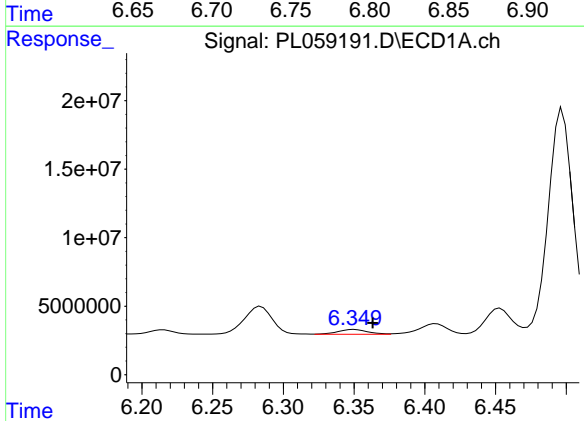
R.T.: 6.086 min
 Delta R.T.: -0.006 min
 Response: -663010
 Conc: N.D.

Instrument :
 ECD_L
 ClientSampled :



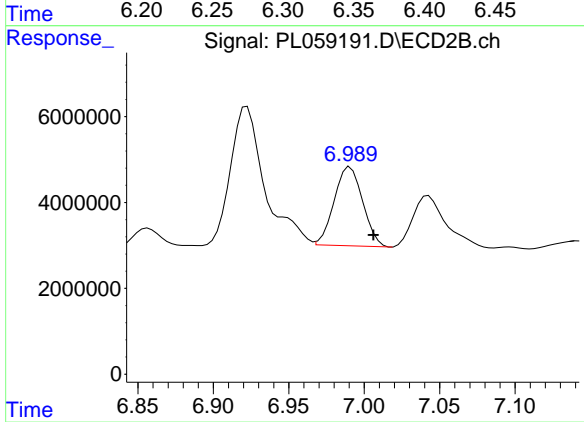
#14 Endrin

R.T.: 6.786 min
 Delta R.T.: -0.013 min
 Response: 10516259
 Conc: 4.22 ng/ml



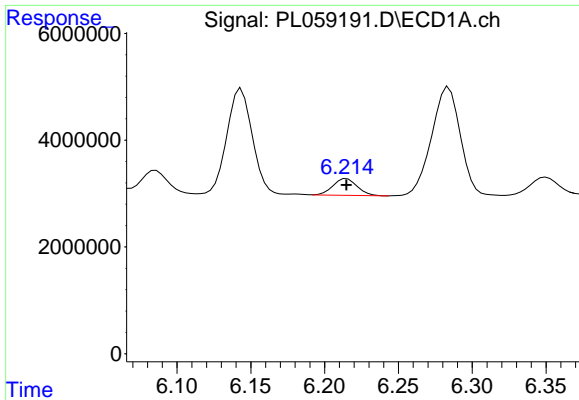
#15 Endosulfan II

R.T.: 6.350 min
 Delta R.T.: -0.013 min
 Response: 5148436
 Conc: 3.33 ng/ml



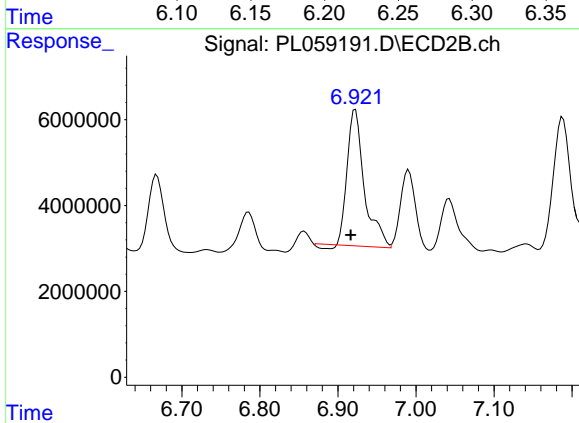
#15 Endosulfan II

R.T.: 6.991 min
 Delta R.T.: -0.015 min
 Response: 24164029
 Conc: 9.28 ng/ml

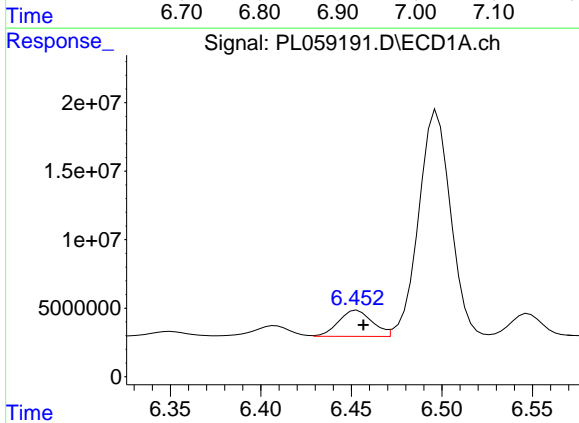


#16 4,4'-DDD
 R.T.: 6.215 min
 Delta R.T.: 0.000 min
 Response: 3588781
 Conc: 2.71 ng/ml

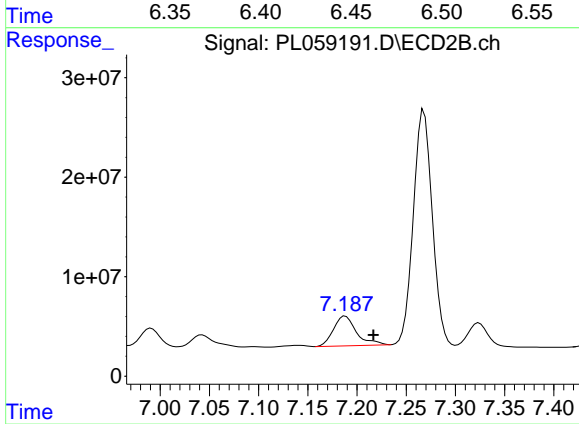
Instrument :
 ECD_L
 ClientSampleId :



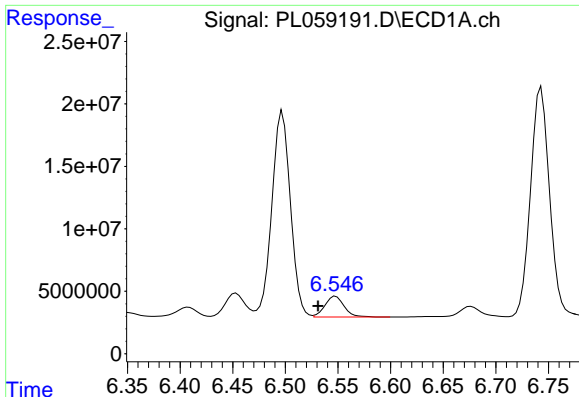
#16 4,4'-DDD
 R.T.: 6.922 min
 Delta R.T.: 0.006 min
 Response: 48445647
 Conc: 20.87 ng/ml



#17 4,4'-DDT
 R.T.: 6.453 min
 Delta R.T.: -0.003 min
 Response: 24688879
 Conc: 19.57 ng/ml



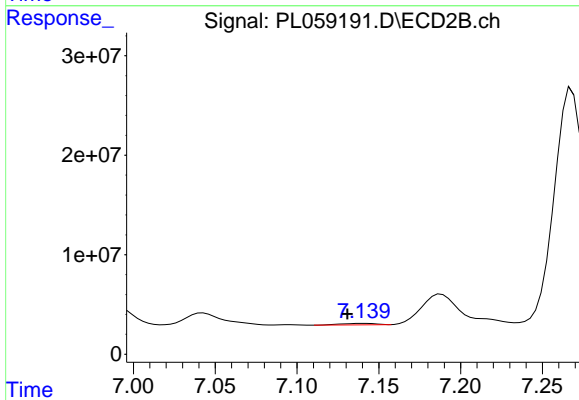
#17 4,4'-DDT
 R.T.: 7.188 min
 Delta R.T.: -0.028 min
 Response: 48475181
 Conc: 21.29 ng/ml



#18 Endrin aldehyde

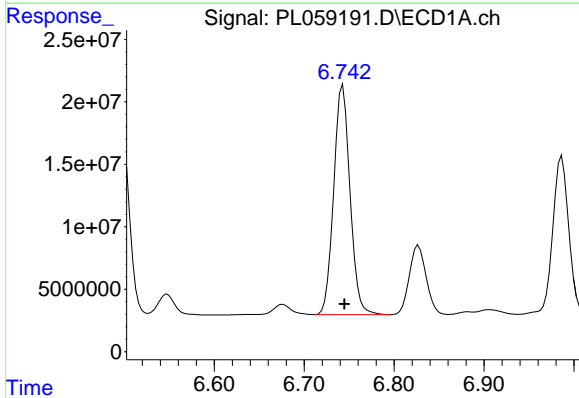
R.T.: 6.548 min
 Delta R.T.: 0.017 min
 Response: 21247265
 Conc: 16.14 ng/ml

Instrument :
 ECD_L
 ClientSampled :



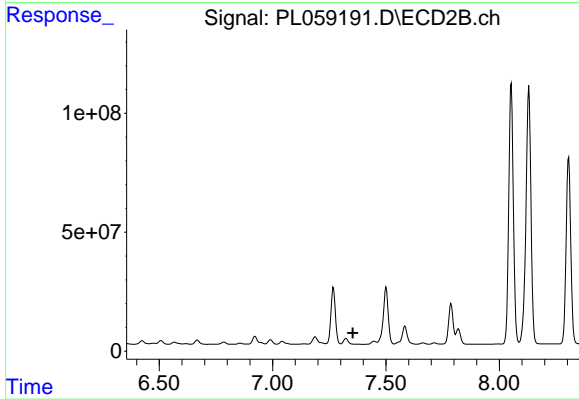
#18 Endrin aldehyde

R.T.: 7.142 min
 Delta R.T.: 0.011 min
 Response: 2210709
 Conc: 0.97 ng/ml



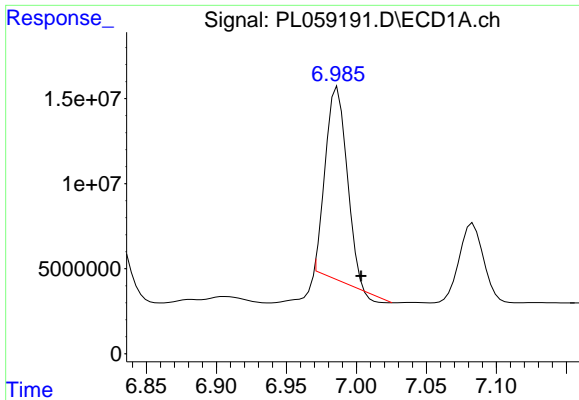
#19 Endosulfan Sulfate

R.T.: 6.743 min
 Delta R.T.: -0.002 min
 Response: 231522848
 Conc: 155.41 ng/ml



#19 Endosulfan Sulfate

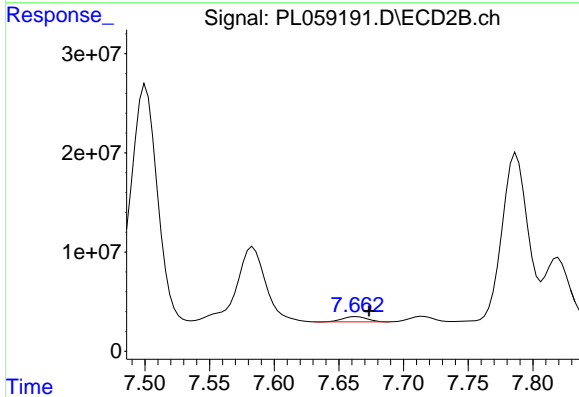
R.T.: 0.000 min
 Exp R.T. : 7.354 min
 Response: 0
 Conc: N.D.



#20 Methoxychlor

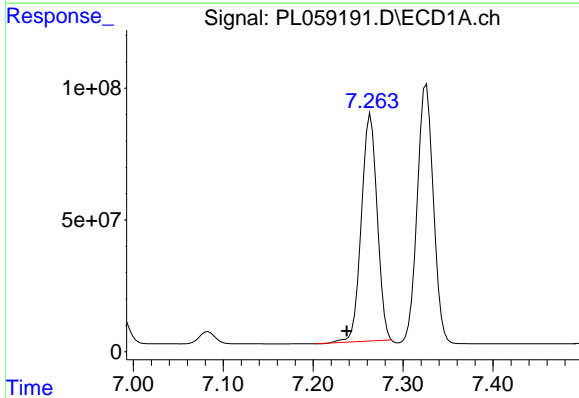
R.T.: 6.987 min
 Delta R.T.: -0.017 min
 Response: 119455742
 Conc: 155.51 ng/ml

Instrument :
 ECD_L
 ClientSampled :



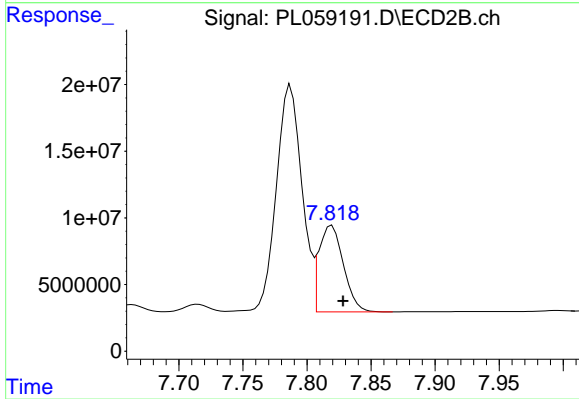
#20 Methoxychlor

R.T.: 7.664 min
 Delta R.T.: -0.010 min
 Response: 6795711
 Conc: 5.15 ng/ml



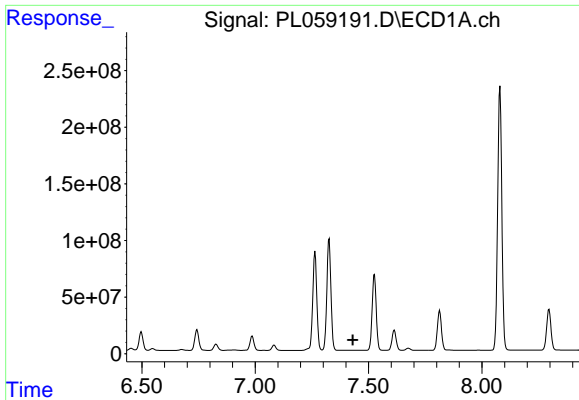
#21 Endrin ketone

R.T.: 7.264 min
 Delta R.T.: 0.027 min
 Response: 1051141588
 Conc: 605.36 ng/ml



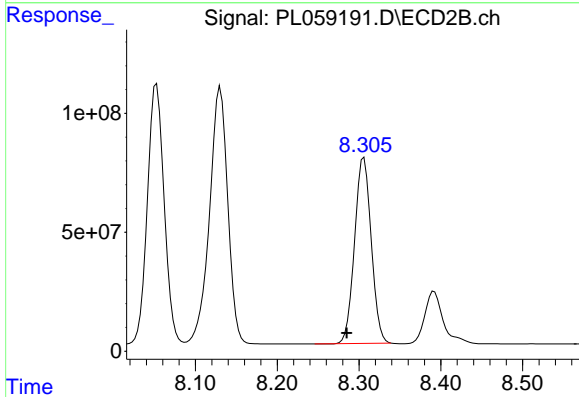
#21 Endrin ketone

R.T.: 7.819 min
 Delta R.T.: -0.009 min
 Response: 86176200
 Conc: 32.85 ng/ml

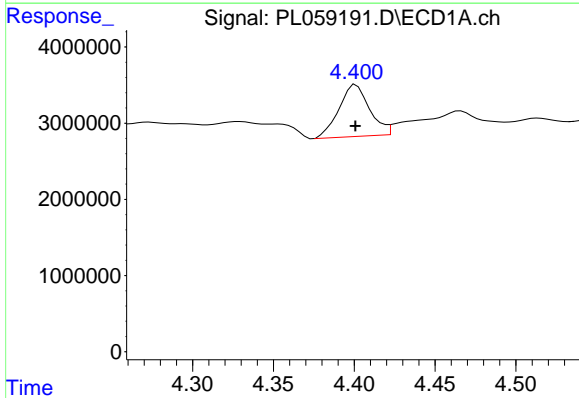


#22 Mirex
 R.T.: 7.430 min
 Delta R.T.: 0.000 min
 Response: -6224
 Conc: N.D.

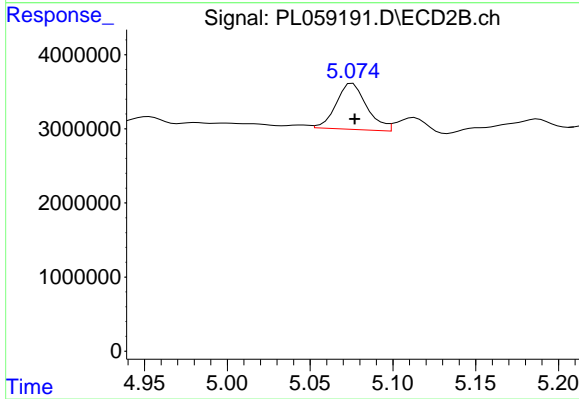
Instrument :
 ECD_L
 ClientSampled :



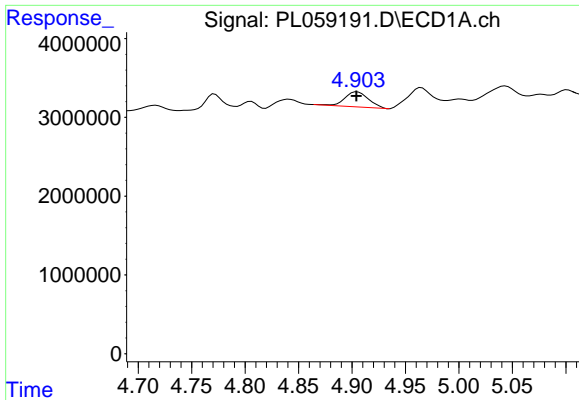
#22 Mirex
 R.T.: 8.306 min
 Delta R.T.: 0.021 min
 Response: 1103868108
 Conc: 559.57 ng/ml



#23 Chlordane-1
 R.T.: 4.401 min
 Delta R.T.: 0.000 min
 Response: 8927552
 Conc: 177.48 ng/ml

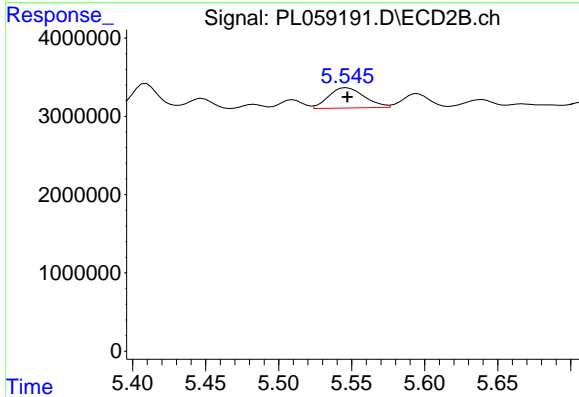


#23 Chlordane-1
 R.T.: 5.076 min
 Delta R.T.: -0.001 min
 Response: 7987509
 Conc: 79.06 ng/ml

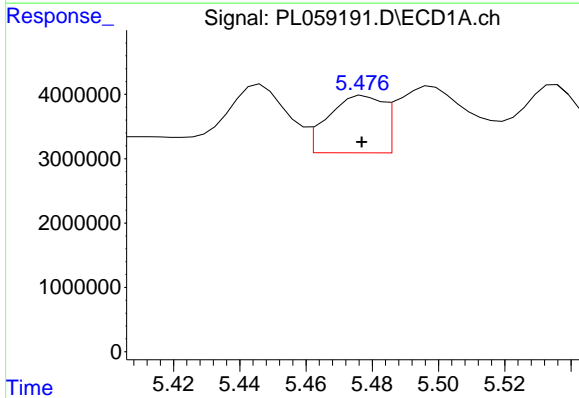


#24 Chlordane-2
 R.T.: 4.905 min
 Delta R.T.: 0.000 min
 Response: 2942426
 Conc: 56.39 ng/ml

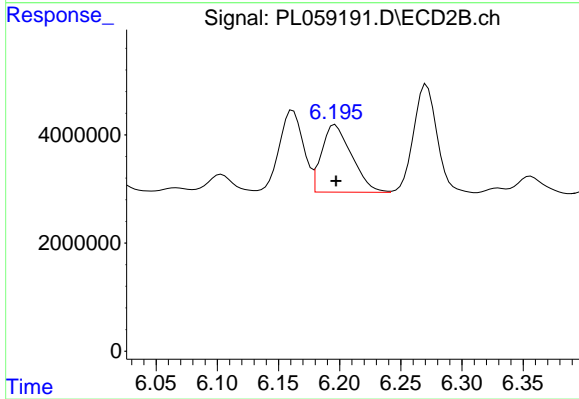
Instrument :
 ECD_L
 ClientSampleId :



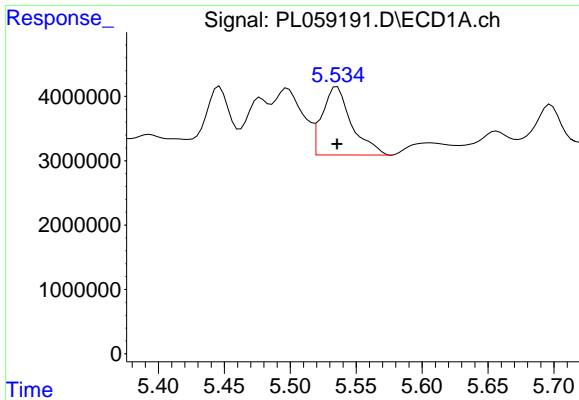
#24 Chlordane-2
 R.T.: 5.547 min
 Delta R.T.: 0.000 min
 Response: 4423935
 Conc: 46.37 ng/ml



#25 Chlordane-3
 R.T.: 5.478 min
 Delta R.T.: 0.000 min
 Response: 10185400
 Conc: 68.93 ng/ml

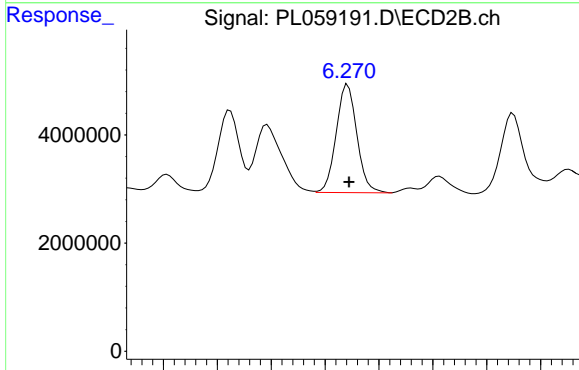


#25 Chlordane-3
 R.T.: 6.196 min
 Delta R.T.: 0.000 min
 Response: 21230663
 Conc: 56.62 ng/ml

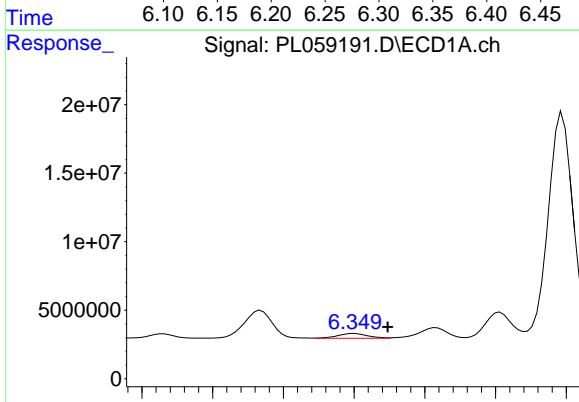


#26 Chlordane-4
 R.T.: 5.536 min
 Delta R.T.: 0.000 min
 Response: 16472720
 Conc: 137.32 ng/ml

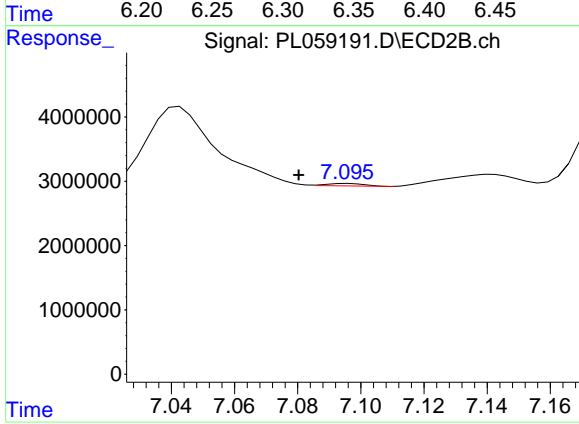
Instrument :
 ECD_L
 ClientSampled :



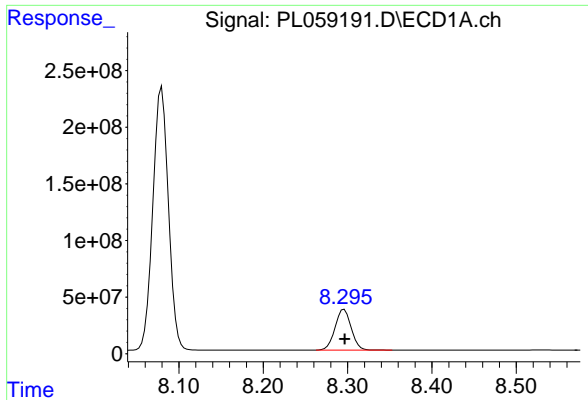
#26 Chlordane-4
 R.T.: 6.271 min
 Delta R.T.: -0.001 min
 Response: 26786978
 Conc: 58.87 ng/ml



#27 Chlordane-5
 R.T.: 6.350 min
 Delta R.T.: -0.024 min
 Response: 5148436
 Conc: 103.46 ng/ml



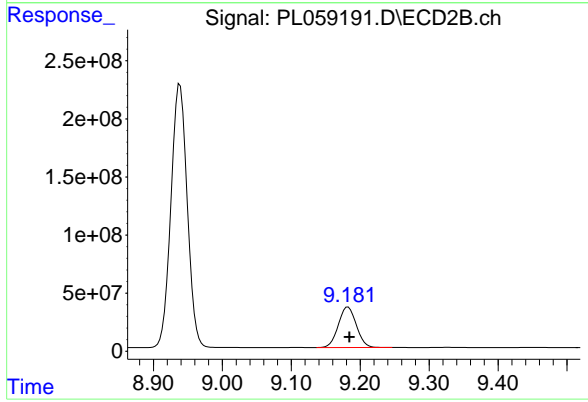
#27 Chlordane-5
 R.T.: 7.096 min
 Delta R.T.: 0.016 min
 Response: 317197
 Conc: 4.01 ng/ml



#28 Decachlorobiphenyl

R.T.: 8.296 min
Delta R.T.: 0.000 min
Response: 478604215
Conc: 291.05 ng/ml

Instrument :
ECD_L
ClientSampleId :



#28 Decachlorobiphenyl

R.T.: 9.182 min
Delta R.T.: -0.002 min
Response: 633298049
Conc: 267.15 ng/ml