

Data Path : Z:\pestpcbsrv\HPCHEM1\ECD_L\Data\PL060923\
 Data File : PL083364.D
 Signal(s) : Signal #1: ECD1A.ch Signal #2: ECD2B.ch
 Acq On : 09 Jun 2023 18:31
 Operator : AR\AJ
 Sample : PSTDCCC050
 Misc :
 ALS Vial : 4 Sample Multiplier: 1

Instrument :
 ECD_L
 ClientSampleId :
 PSTDCCC050

Manual Integrations
APPROVED

Reviewed By :Abdul Mirza 06/12/2023
 Supervised By :Ankita Jodhani 06/12/2023

Integration File signal 1: autoint1.e
 Integration File signal 2: autoint2.e
 Quant Time: Jun 09 21:37:52 2023
 Quant Method : Z:\pestpcbsrv\HPCHEM1\ECD_L\methods\PL051923.M
 Quant Title : GC Extractables
 QLast Update : Sat May 20 04:58:53 2023
 Response via : Initial Calibration
 Integrator: ChemStation

Volume Inj. : 1 µl
 Signal #1 Phase : ZB-MR2 Signal #2 Phase: ZB-MR1
 Signal #1 Info : 30M x 0.32mm x0.2 Signal #2 Info : 30M x 0.32mm x0.5µm

	Compound	RT#1	RT#2	Resp#1	Resp#2	ng/ml	ng/ml

System Monitoring Compounds							
1)	SA Tetrachlo...	3.314	2.632	132.9E6	119.4E6	45.213	45.989
28)	SA Decachlor...	8.730	7.734	98139438	120.7E6	46.793	48.554
Target Compounds							
2)	A alpha-BHC	3.763	3.128	204.5E6	174.8E6	46.074	46.843
3)	MA gamma-BHC...	4.091	3.454	192.3E6	160.7E6	46.414	48.208
4)	MA Heptachlor	4.668	3.784	179.8E6	171.2E6	47.049	46.762
5)	MB Aldrin	5.005	4.060	168.4E6	163.8E6	47.879	50.342
6)	B beta-BHC	4.295	3.755	82492224	66849056	43.815	46.745
7)	B delta-BHC	4.536	3.979	183.1E6	163.0E6	53.241	49.756
8)	B Heptachlo...	5.431	4.561	167.7E6	138.9E6	52.413	46.813
9)	A Endosulfan I	5.812	4.927	156.8E6	122.0E6	52.268	43.646
10)	B gamma-Chl...	5.684	4.809	156.9E6	142.5E6	49.401m	47.451
11)	B alpha-Chl...	5.762	4.872	159.5E6	141.7E6	49.687m	47.204
12)	B 4,4'-DDE	5.943	5.061	137.6E6	122.1E6	49.908	50.267m
13)	MA Dieldrin	6.087	5.190	149.9E6	135.0E6	49.827	47.818m
14)	MA Endrin	6.313	5.465	130.4E6	122.3E6	48.540	48.221m
15)	B Endosulfa...	6.536	5.763	123.5E6	113.6E6	46.386	45.916
16)	A 4,4'-DDD	6.458	5.617	112.8E6	97522118	51.896	50.707
17)	MA 4,4'-DDT	6.769	5.863	121.2E6	106.6E6	48.409	47.763m
18)	B Endrin al...	6.665	5.942	98304070	91115325	48.892m	46.077
19)	B Endosulfa...	6.901	6.165	126.6E6	117.1E6	49.383	47.833
20)	A Methoxychlor	7.251	6.444	63412710	59055082	47.953	46.436
21)	B Endrin ke...	7.380	6.667	129.9E6	124.4E6	50.924	46.014m
22)	Mirex	7.844	6.839	101.6E6	106.3E6	48.452	45.443

(f)=RT Delta > 1/2 Window (#)=Amounts differ by > 25% (m)=manual int.

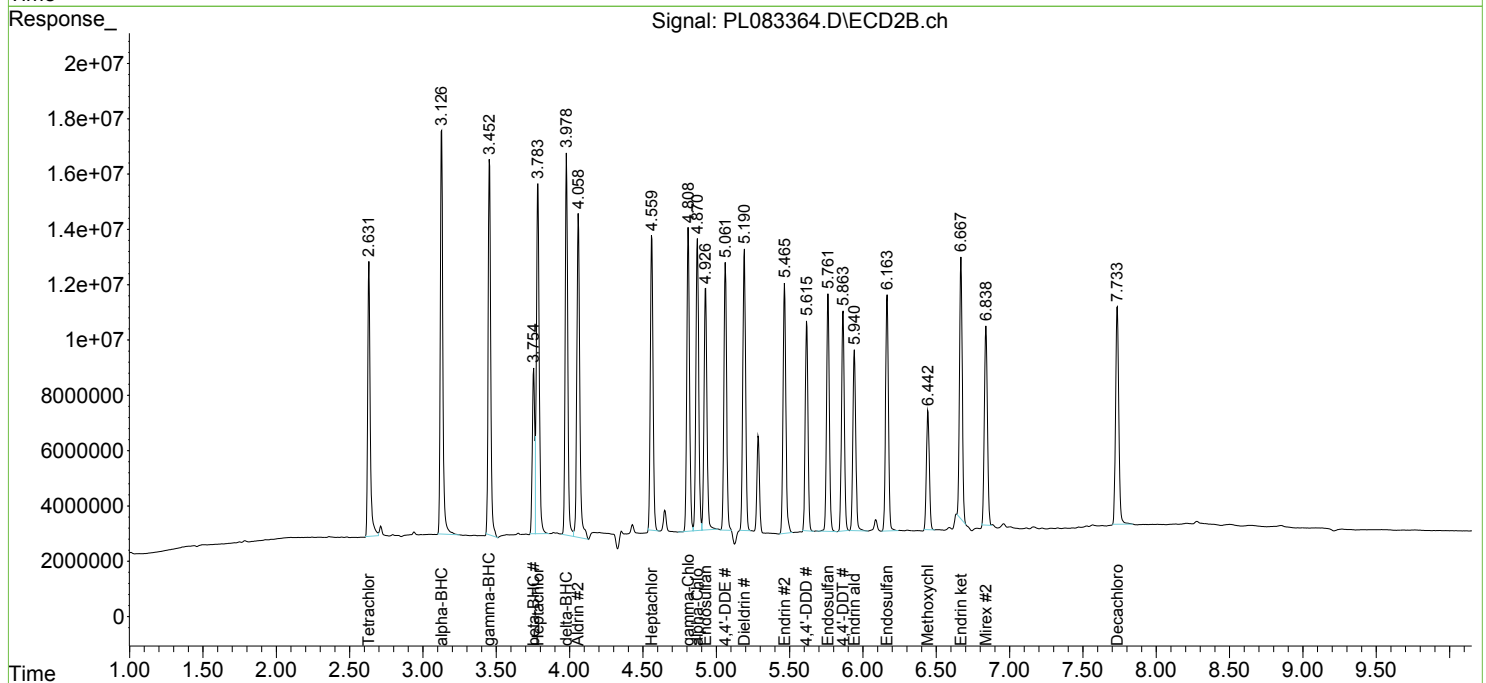
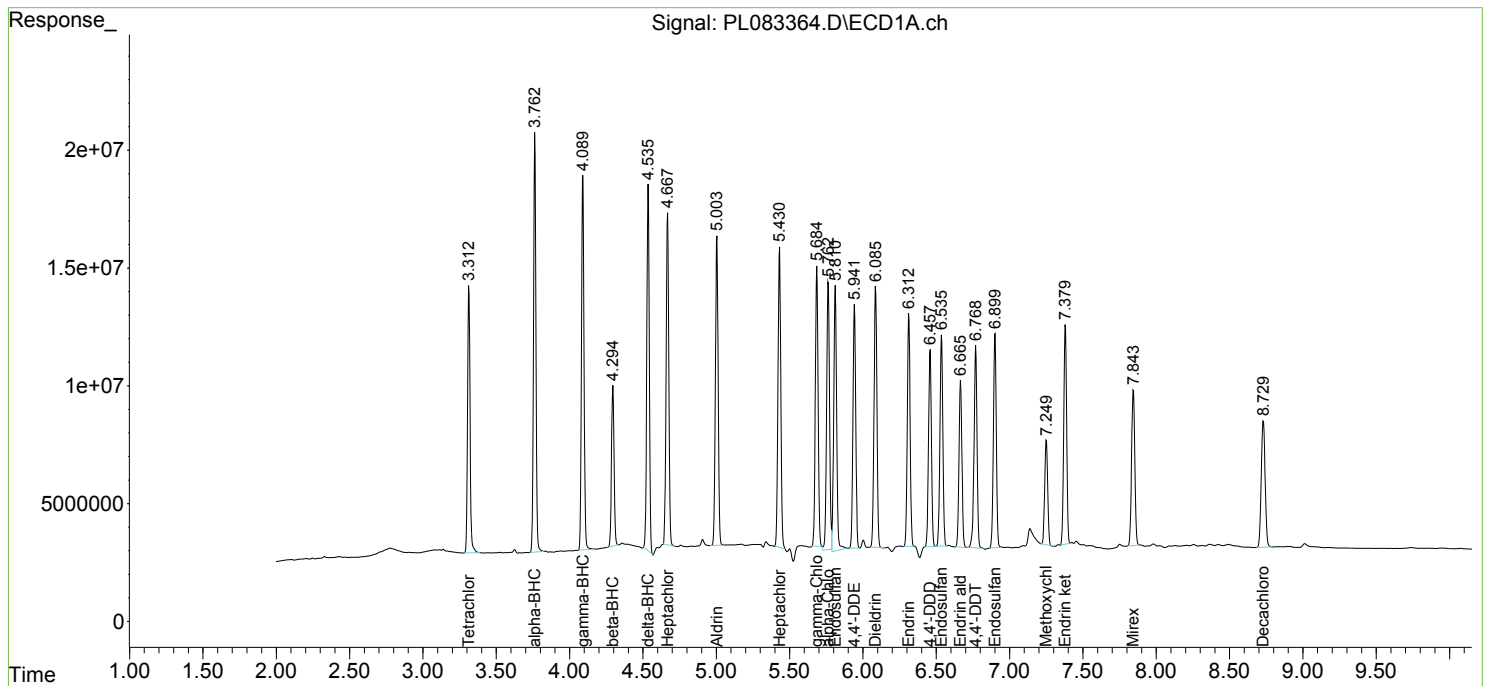
Data Path : Z:\pestpcbsrv\HPCHEM1\ECD_L\Data\PL060923\
 Data File : PL083364.D
 Signal(s) : Signal #1: ECD1A.ch Signal #2: ECD2B.ch
 Acq On : 09 Jun 2023 18:31
 Operator : AR\AJ
 Sample : PSTDCCC050
 Misc :
 ALS Vial : 4 Sample Multiplier: 1

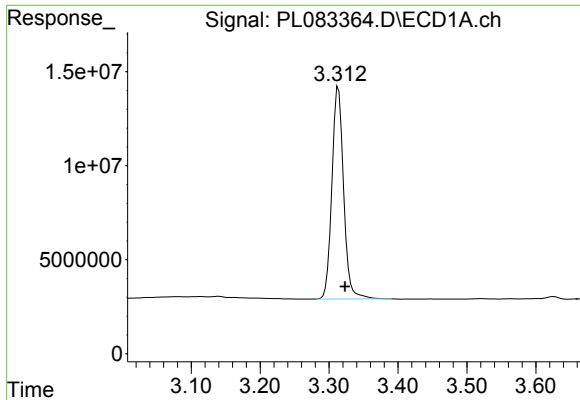
Instrument :
 ECD_L
ClientSampleId :
 PSTDCCC050

Manual Integrations
APPROVED
 Reviewed By :Abdul Mirza 06/12/2023
 Supervised By :Ankita Jodhani 06/12/2023

Integration File signal 1: autoint1.e
 Integration File signal 2: autoint2.e
 Quant Time: Jun 09 21:37:52 2023
 Quant Method : Z:\pestpcbsrv\HPCHEM1\ECD_L\methods\PL051923.M
 Quant Title : GC Extractables
 QLast Update : Sat May 20 04:58:53 2023
 Response via : Initial Calibration
 Integrator: ChemStation

Volume Inj. : 1 µl
 Signal #1 Phase : ZB-MR2 Signal #2 Phase: ZB-MR1
 Signal #1 Info : 30M x 0.32mm x0.2 Signal #2 Info : 30M x 0.32mm x0.5µm





#1 Tetrachloro-m-xylene

R.T.: 3.314 min
 Delta R.T.: -0.009 min
 Response: 132882239
 Conc: 45.21 ng/ml

Instrument :

ECD_L

ClientSampleId :

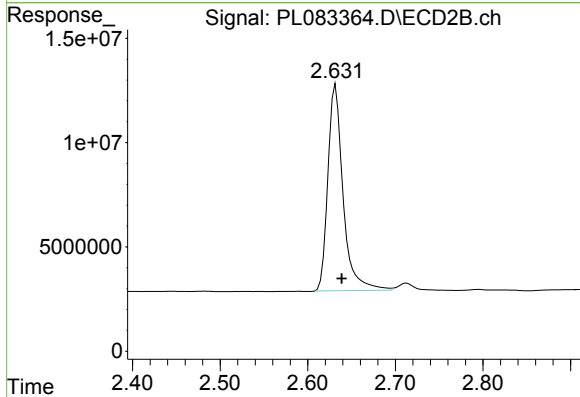
PSTDCCC050

Manual Integrations

APPROVED

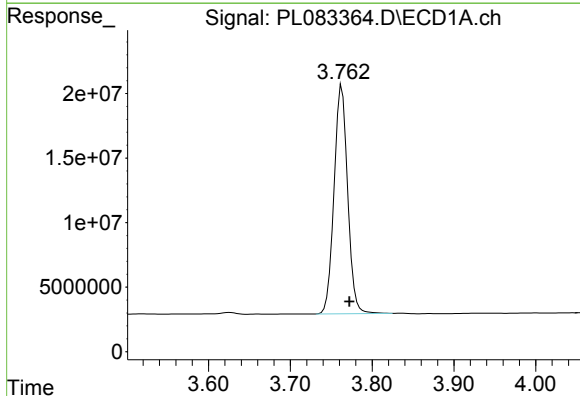
Reviewed By :Abdul Mirza 06/12/2023

Supervised By :Ankita Jodhani 06/12/2023



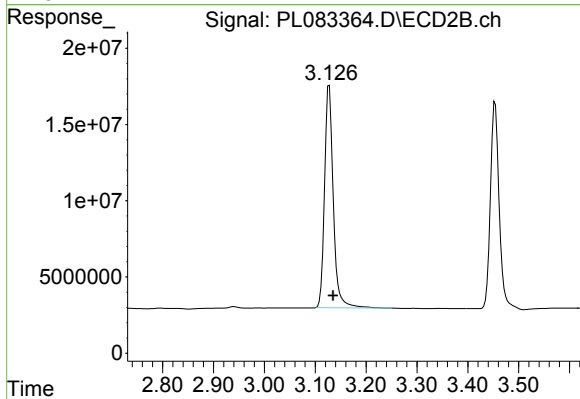
#1 Tetrachloro-m-xylene

R.T.: 2.632 min
 Delta R.T.: -0.007 min
 Response: 119392235
 Conc: 45.99 ng/ml



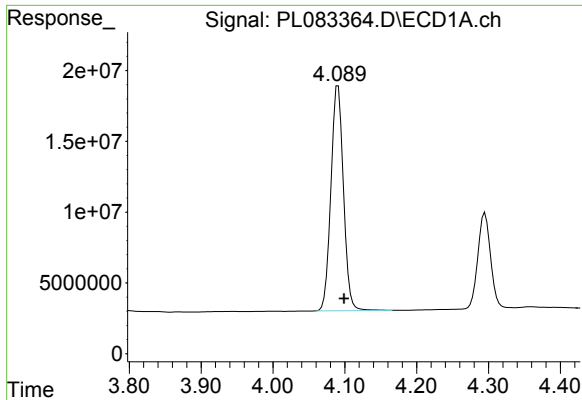
#2 alpha-BHC

R.T.: 3.763 min
 Delta R.T.: -0.009 min
 Response: 204532621
 Conc: 46.07 ng/ml



#2 alpha-BHC

R.T.: 3.128 min
 Delta R.T.: -0.008 min
 Response: 174792681
 Conc: 46.84 ng/ml

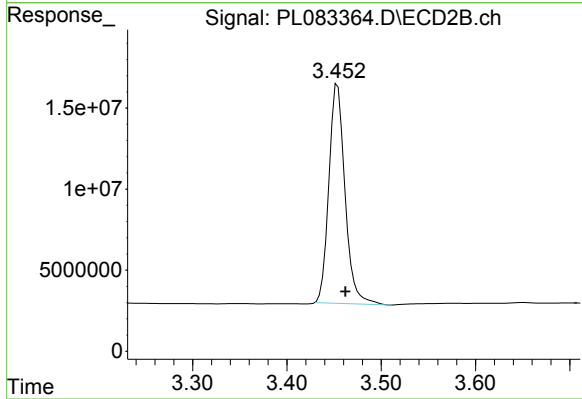


#3 gamma-BHC (Lindane)
 R.T.: 4.091 min
 Delta R.T.: -0.008 min
 Response: 192288211
 Conc: 46.41 ng/ml

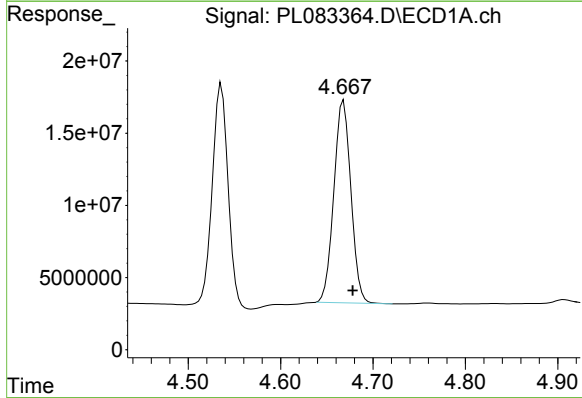
Instrument :
 ECD_L
 ClientSampleId :
 PSTDCCC050

Manual Integrations
 APPROVED

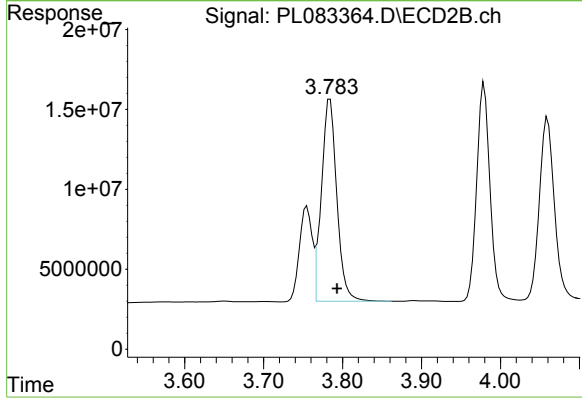
Reviewed By :Abdul Mirza 06/12/2023
 Supervised By :Ankita Jodhani 06/12/2023



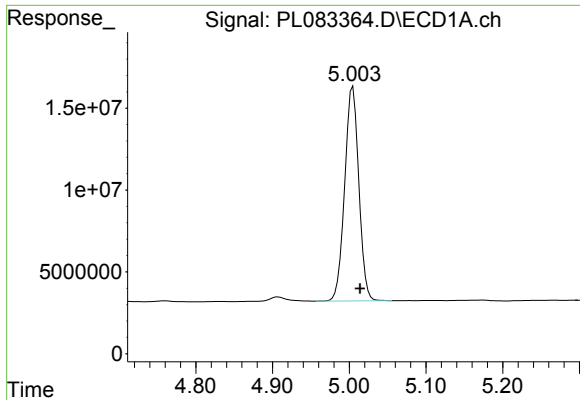
#3 gamma-BHC (Lindane)
 R.T.: 3.454 min
 Delta R.T.: -0.008 min
 Response: 160692036
 Conc: 48.21 ng/ml



#4 Heptachlor
 R.T.: 4.668 min
 Delta R.T.: -0.010 min
 Response: 179843203
 Conc: 47.05 ng/ml



#4 Heptachlor
 R.T.: 3.784 min
 Delta R.T.: -0.009 min
 Response: 171199295
 Conc: 46.76 ng/ml

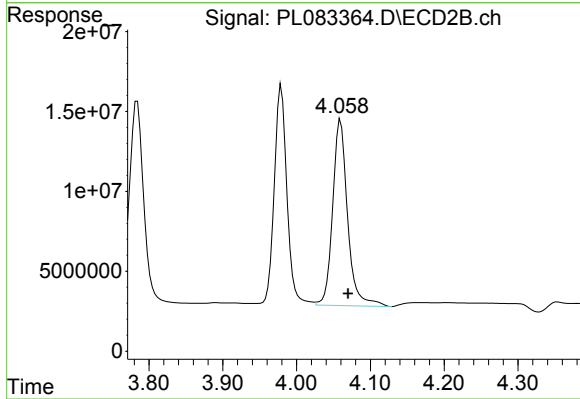


#5 Aldrin
 R.T.: 5.005 min
 Delta R.T.: -0.009 min
 Response: 168444820
 Conc: 47.88 ng/ml

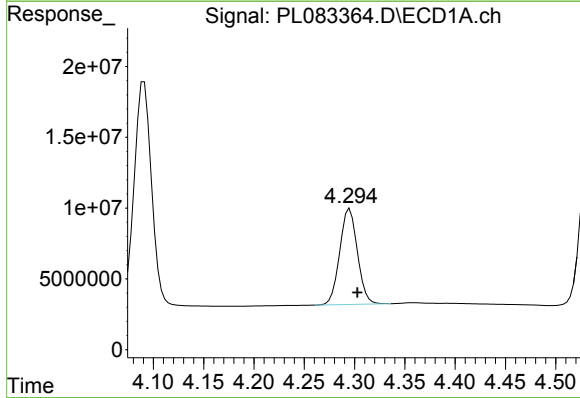
Instrument :
 ECD_L
 ClientSampleId :
 PSTDCCC050

Manual Integrations
 APPROVED

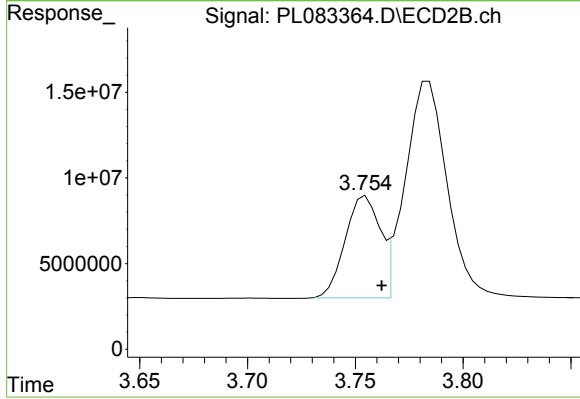
Reviewed By :Abdul Mirza 06/12/2023
 Supervised By :Ankita Jodhani 06/12/2023



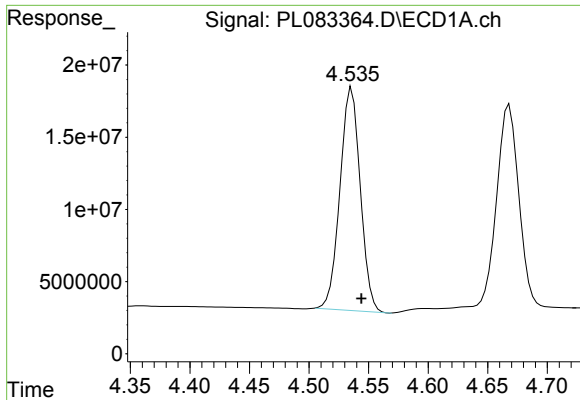
#5 Aldrin
 R.T.: 4.060 min
 Delta R.T.: -0.010 min
 Response: 163792569
 Conc: 50.34 ng/ml



#6 beta-BHC
 R.T.: 4.295 min
 Delta R.T.: -0.008 min
 Response: 82492224
 Conc: 43.82 ng/ml



#6 beta-BHC
 R.T.: 3.755 min
 Delta R.T.: -0.007 min
 Response: 66849056
 Conc: 46.74 ng/ml



#7 delta-BHC

R.T.: 4.536 min
 Delta R.T.: -0.008 min
 Response: 183091697
 Conc: 53.24 ng/ml

Instrument :

ECD_L

ClientSampleId :

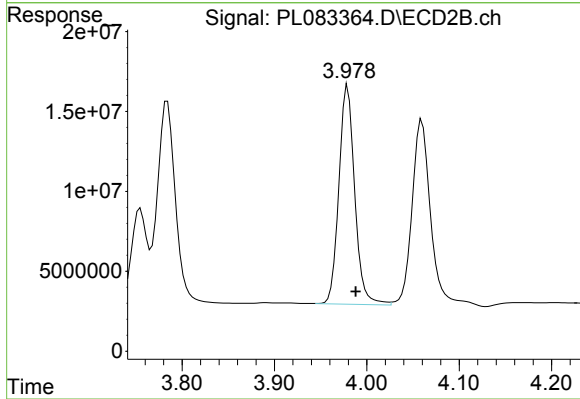
PSTDCCC050

Manual Integrations

APPROVED

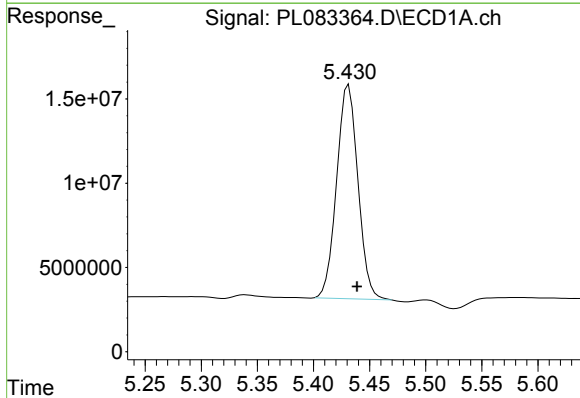
Reviewed By :Abdul Mirza 06/12/2023

Supervised By :Ankita Jodhani 06/12/2023



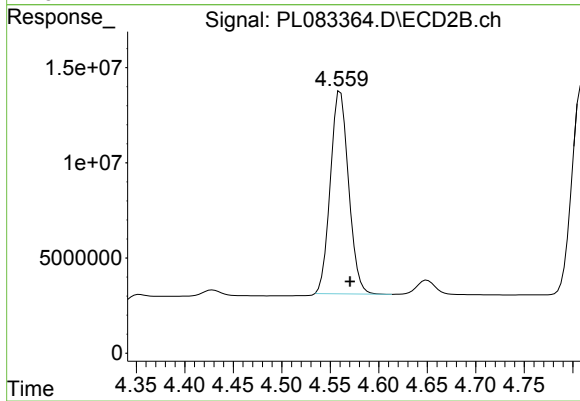
#7 delta-BHC

R.T.: 3.979 min
 Delta R.T.: -0.009 min
 Response: 163023653
 Conc: 49.76 ng/ml



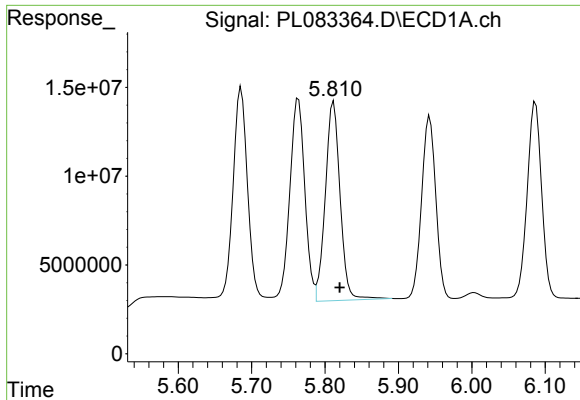
#8 Heptachlor epoxide

R.T.: 5.431 min
 Delta R.T.: -0.008 min
 Response: 167654044
 Conc: 52.41 ng/ml



#8 Heptachlor epoxide

R.T.: 4.561 min
 Delta R.T.: -0.010 min
 Response: 138936467
 Conc: 46.81 ng/ml



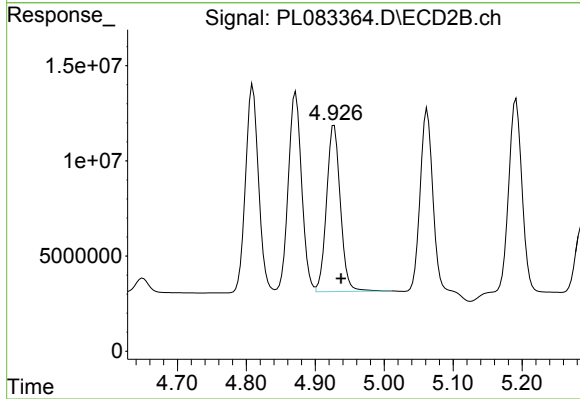
#9 Endosulfan I

R.T.: 5.812 min
 Delta R.T.: -0.008 min
 Response: 156833635
 Conc: 52.27 ng/ml

Instrument :
 ECD_L
 ClientSampleId :
 PSTDCCC050

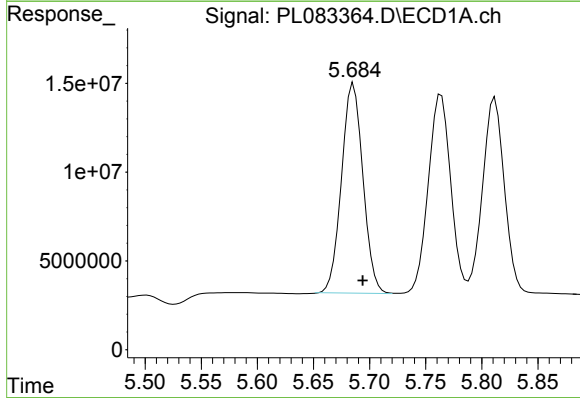
Manual Integrations
 APPROVED

Reviewed By :Abdul Mirza 06/12/2023
 Supervised By :Ankita Jodhani 06/12/2023



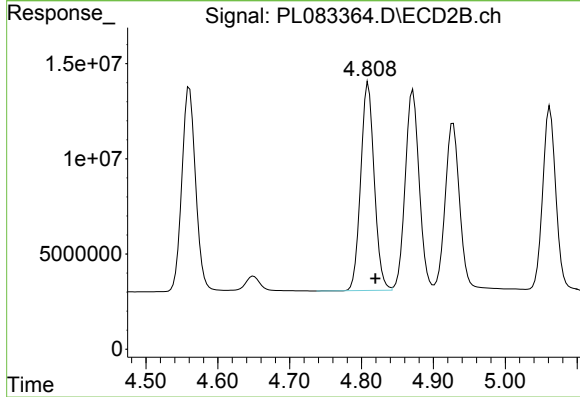
#9 Endosulfan I

R.T.: 4.927 min
 Delta R.T.: -0.010 min
 Response: 121962237
 Conc: 43.65 ng/ml



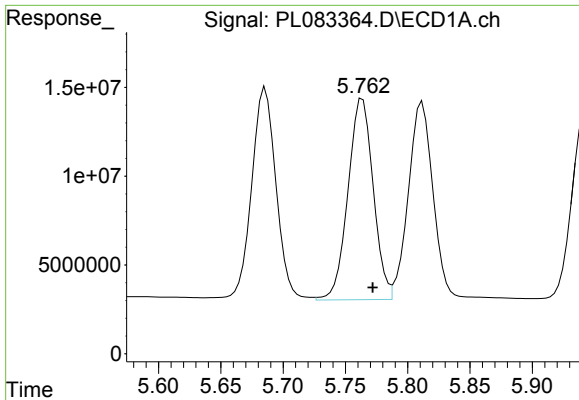
#10 gamma-Chlordane

R.T.: 5.684 min
 Delta R.T.: -0.010 min
 Response: 156945406
 Conc: 49.40 ng/ml m



#10 gamma-Chlordane

R.T.: 4.809 min
 Delta R.T.: -0.010 min
 Response: 142515357
 Conc: 47.45 ng/ml



#11 alpha-Chlordane

R.T.: 5.762 min
 Delta R.T.: -0.010 min
 Response: 159461744
 Conc: 49.69 ng/ml

Instrument :

ECD_L

ClientSampleId :

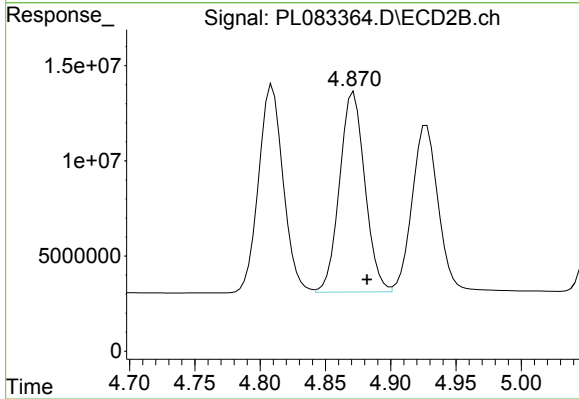
PSTDCCC050

Manual Integrations

APPROVED

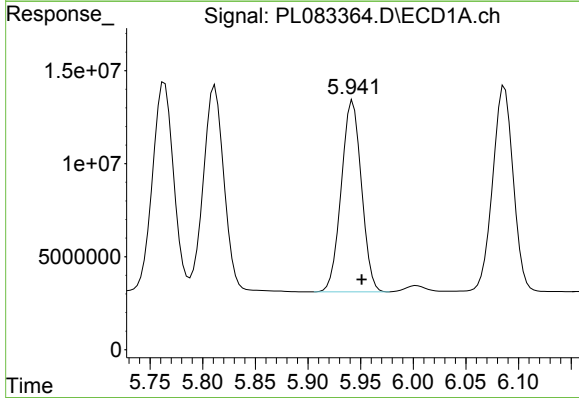
Reviewed By :Abdul Mirza 06/12/2023

Supervised By :Ankita Jodhani 06/12/2023



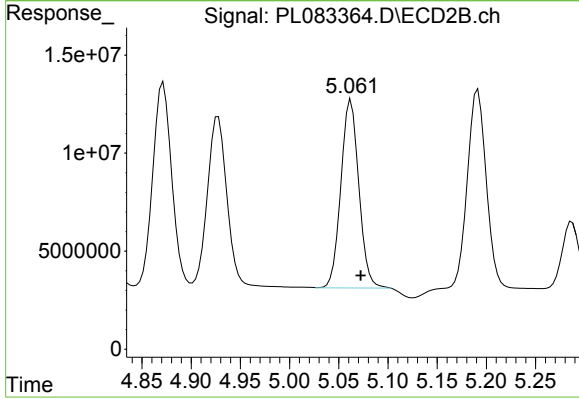
#11 alpha-Chlordane

R.T.: 4.872 min
 Delta R.T.: -0.010 min
 Response: 141705871
 Conc: 47.20 ng/ml



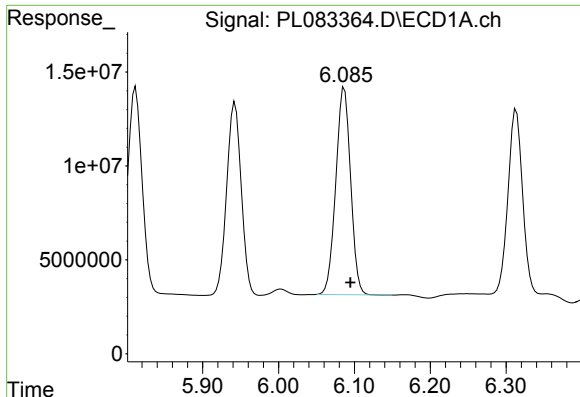
#12 4,4'-DDE

R.T.: 5.943 min
 Delta R.T.: -0.008 min
 Response: 137572179
 Conc: 49.91 ng/ml



#12 4,4'-DDE

R.T.: 5.061 min
 Delta R.T.: -0.011 min
 Response: 122086973
 Conc: 50.27 ng/ml m



#13 Dieldrin

R.T.: 6.087 min
 Delta R.T.: -0.008 min
 Response: 149872479
 Conc: 49.83 ng/ml

Instrument :

ECD_L

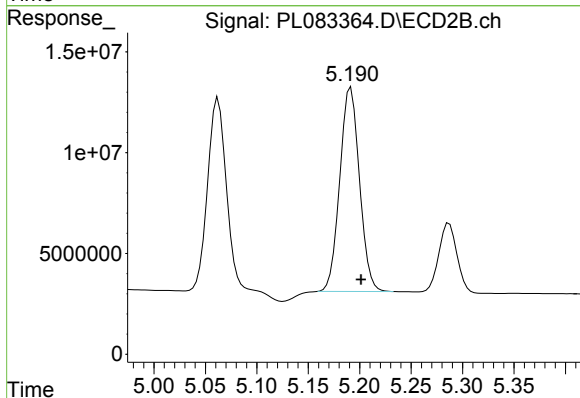
ClientSampleId :

PSTDCCC050

Manual Integrations

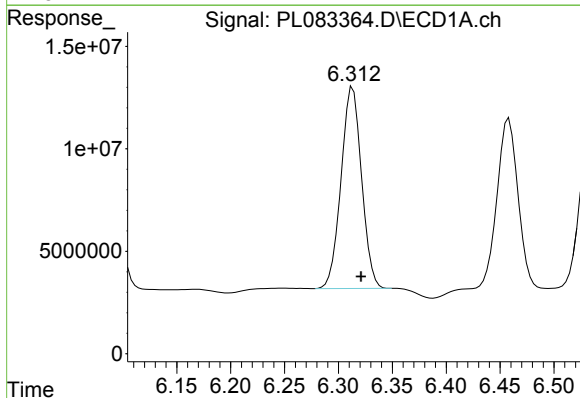
APPROVED

Reviewed By :Abdul Mirza 06/12/2023
 Supervised By :Ankita Jodhani 06/12/2023



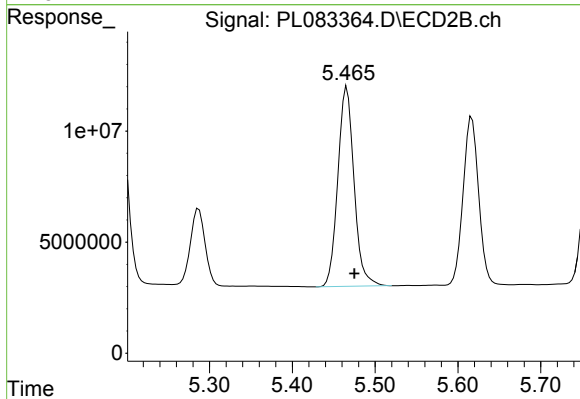
#13 Dieldrin

R.T.: 5.190 min
 Delta R.T.: -0.011 min
 Response: 134985565
 Conc: 47.82 ng/ml m



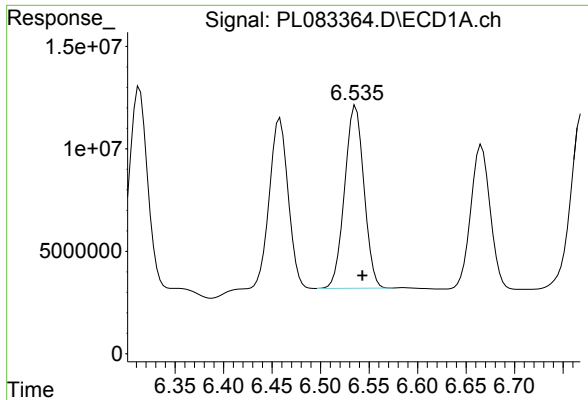
#14 Endrin

R.T.: 6.313 min
 Delta R.T.: -0.008 min
 Response: 130439375
 Conc: 48.54 ng/ml



#14 Endrin

R.T.: 5.465 min
 Delta R.T.: -0.010 min
 Response: 122335479
 Conc: 48.22 ng/ml m



#15 Endosulfan II

R.T.: 6.536 min
 Delta R.T.: -0.007 min
 Response: 123477075
 Conc: 46.39 ng/ml

Instrument :

ECD_L

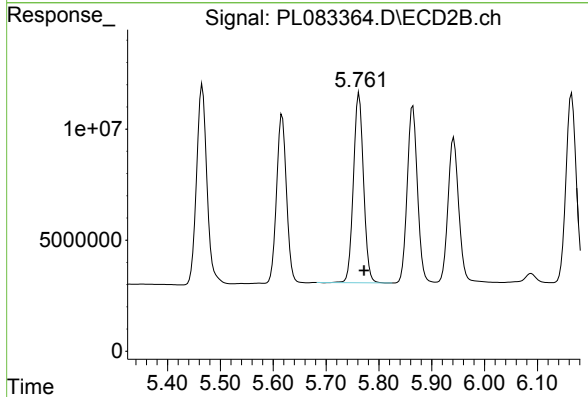
ClientSampleId :

PSTDCCC050

Manual Integrations

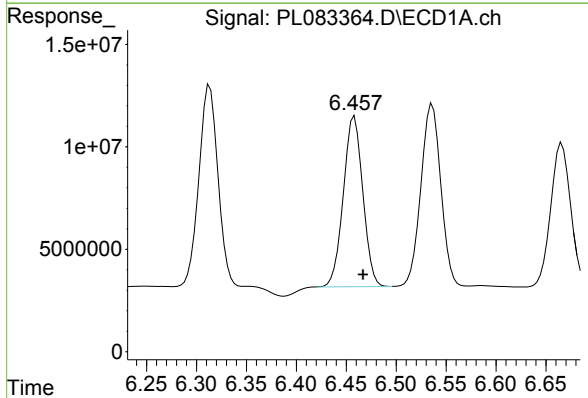
APPROVED

Reviewed By :Abdul Mirza 06/12/2023
 Supervised By :Ankita Jodhani 06/12/2023



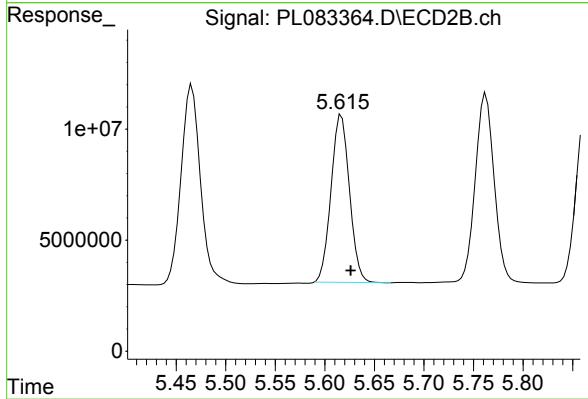
#15 Endosulfan II

R.T.: 5.763 min
 Delta R.T.: -0.009 min
 Response: 113605972
 Conc: 45.92 ng/ml



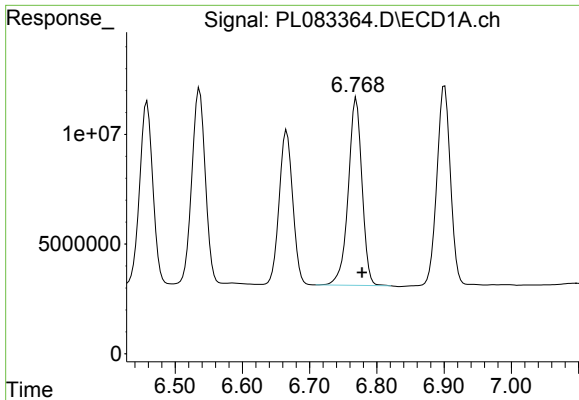
#16 4,4'-DDD

R.T.: 6.458 min
 Delta R.T.: -0.009 min
 Response: 112773767
 Conc: 51.90 ng/ml



#16 4,4'-DDD

R.T.: 5.617 min
 Delta R.T.: -0.009 min
 Response: 97522118
 Conc: 50.71 ng/ml



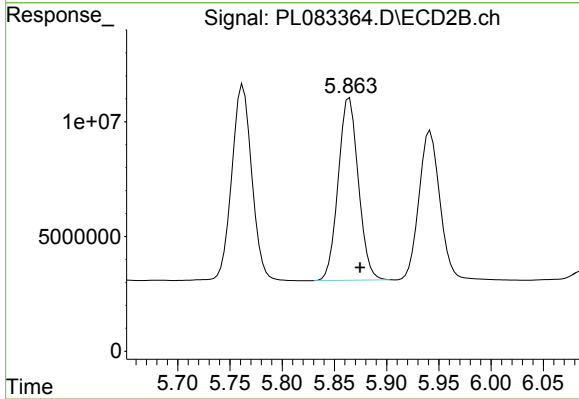
#17 4,4'-DDT

R.T.: 6.769 min
 Delta R.T.: -0.009 min
 Response: 121177110
 Conc: 48.41 ng/ml

Instrument :
 ECD_L
 ClientSampleId :
 PSTDCCC050

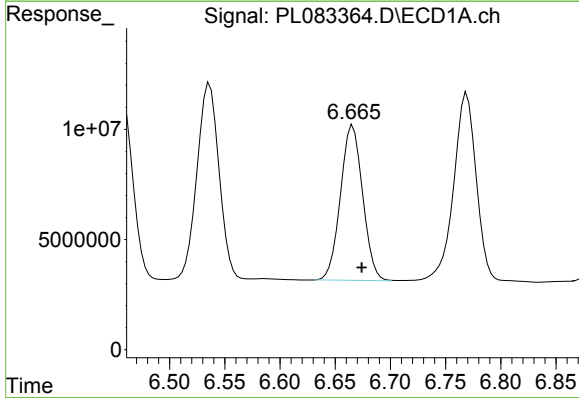
Manual Integrations
 APPROVED

Reviewed By :Abdul Mirza 06/12/2023
 Supervised By :Ankita Jodhani 06/12/2023



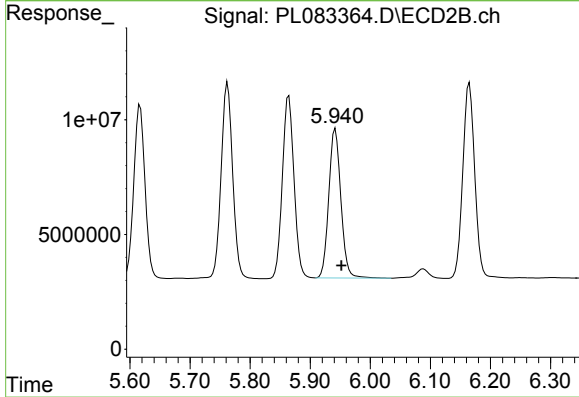
#17 4,4'-DDT

R.T.: 5.863 min
 Delta R.T.: -0.012 min
 Response: 106561055
 Conc: 47.76 ng/ml m



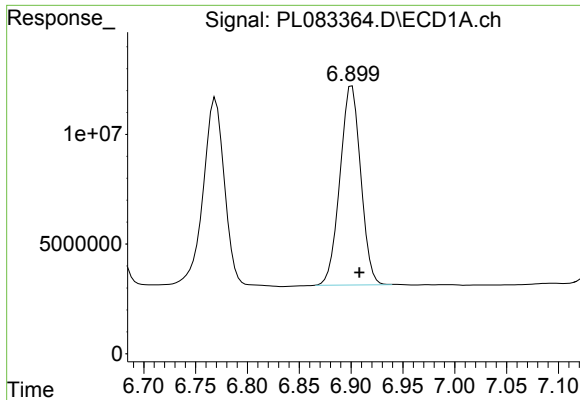
#18 Endrin aldehyde

R.T.: 6.665 min
 Delta R.T.: -0.009 min
 Response: 98304070
 Conc: 48.89 ng/ml m



#18 Endrin aldehyde

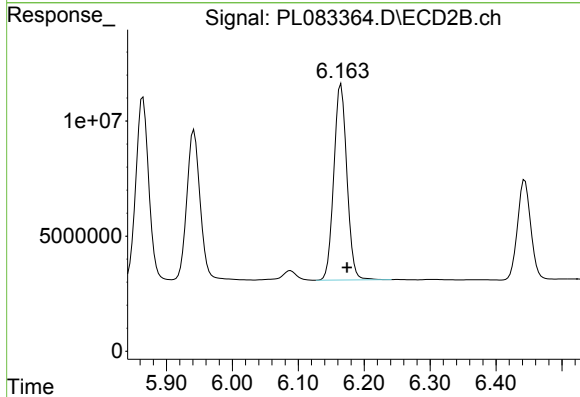
R.T.: 5.942 min
 Delta R.T.: -0.010 min
 Response: 91115325
 Conc: 46.08 ng/ml



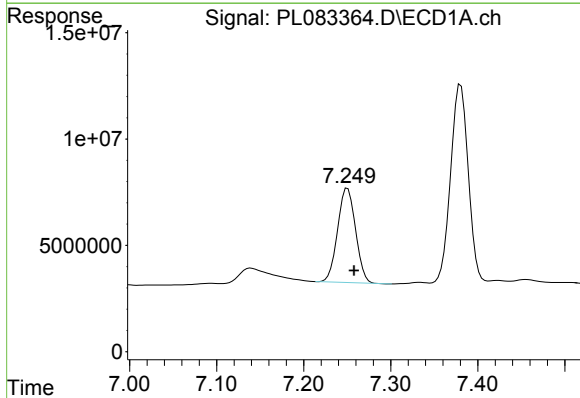
#19 Endosulfan Sulfate
 R.T.: 6.901 min
 Delta R.T.: -0.007 min
 Response: 126603287
 Conc: 49.38 ng/ml

Instrument : ECD_L
 ClientSampleId : PSTDCCC050

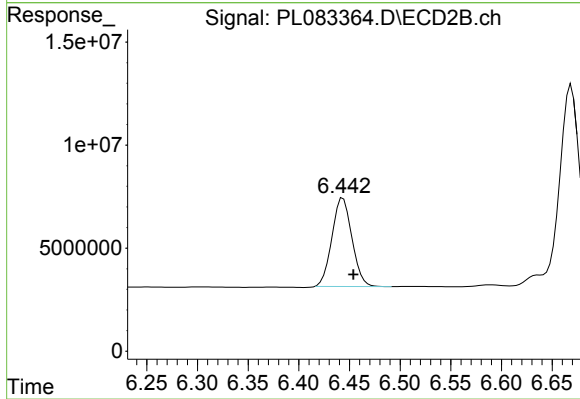
Manual Integrations
APPROVED
 Reviewed By :Abdul Mirza 06/12/2023
 Supervised By :Ankita Jodhani 06/12/2023



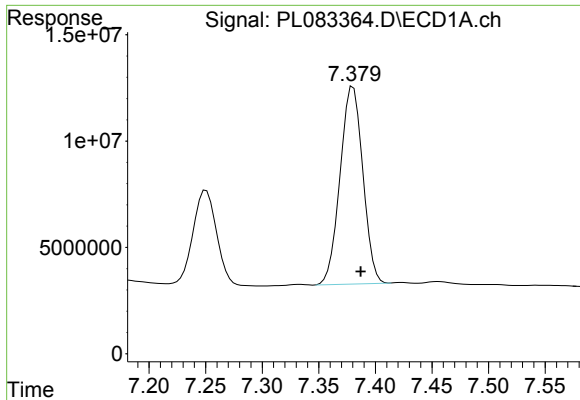
#19 Endosulfan Sulfate
 R.T.: 6.165 min
 Delta R.T.: -0.009 min
 Response: 117141482
 Conc: 47.83 ng/ml



#20 Methoxychlor
 R.T.: 7.251 min
 Delta R.T.: -0.007 min
 Response: 63412710
 Conc: 47.95 ng/ml



#20 Methoxychlor
 R.T.: 6.444 min
 Delta R.T.: -0.010 min
 Response: 59055082
 Conc: 46.44 ng/ml



#21 Endrin ketone

R.T.: 7.380 min
 Delta R.T.: -0.007 min
 Response: 129897252
 Conc: 50.92 ng/ml

Instrument :

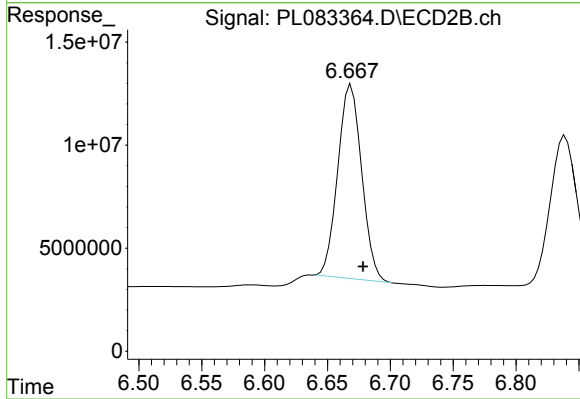
ECD_L

ClientSampleId :

PSTDCCC050

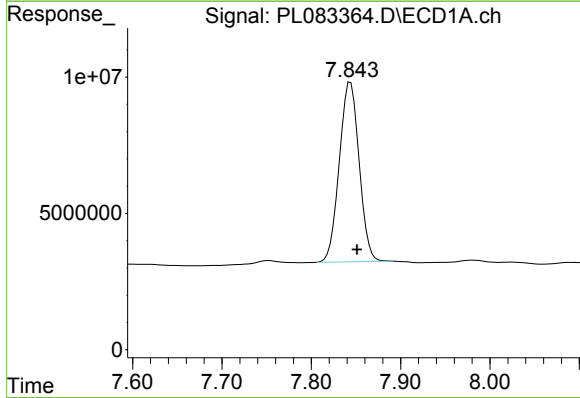
Manual Integrations
 APPROVED

Reviewed By :Abdul Mirza 06/12/2023
 Supervised By :Ankita Jodhani 06/12/2023



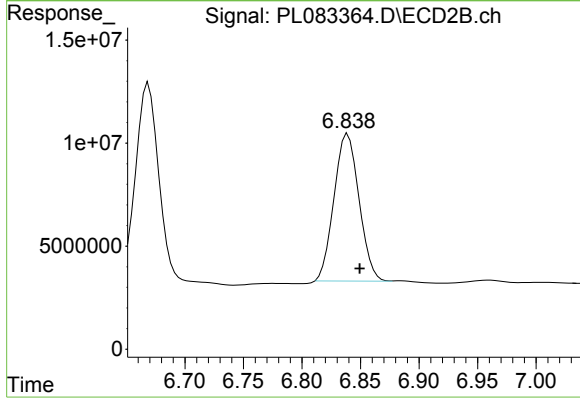
#21 Endrin ketone

R.T.: 6.667 min
 Delta R.T.: -0.011 min
 Response: 124415482
 Conc: 46.01 ng/ml m



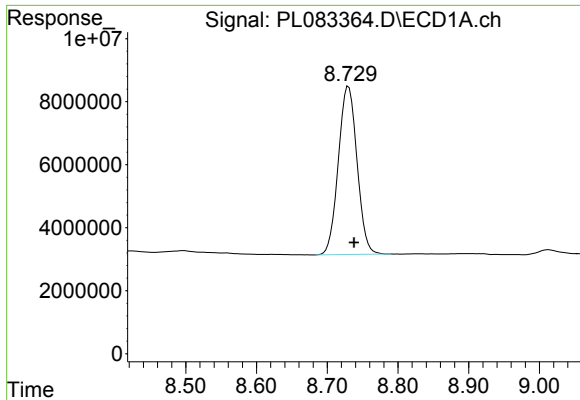
#22 Mirex

R.T.: 7.844 min
 Delta R.T.: -0.007 min
 Response: 101555913
 Conc: 48.45 ng/ml



#22 Mirex

R.T.: 6.839 min
 Delta R.T.: -0.010 min
 Response: 106329480
 Conc: 45.44 ng/ml



#28 Decachlorobiphenyl
 R.T.: 8.730 min
 Delta R.T.: -0.008 min
 Response: 98139438
 Conc: 46.79 ng/ml

Instrument :

ECD_L

ClientSampleId :

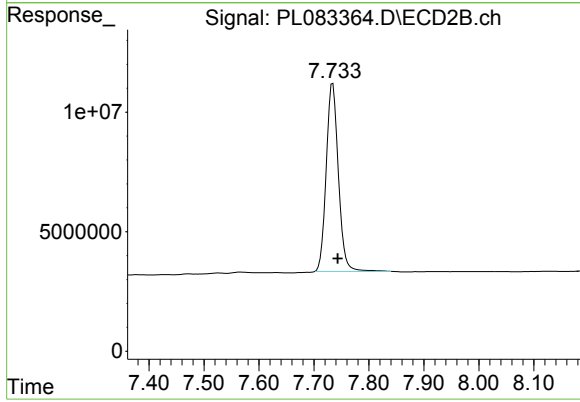
PSTDCCC050

Manual Integrations

APPROVED

Reviewed By :Abdul Mirza 06/12/2023

Supervised By :Ankita Jodhani 06/12/2023



#28 Decachlorobiphenyl
 R.T.: 7.734 min
 Delta R.T.: -0.009 min
 Response: 120731168
 Conc: 48.55 ng/ml