

Data Path : Z:\pestpcbsrv\HPCHEM1\ECD\_L\Data\PL061020\  
 Data File : PL059222.D  
 Signal(s) : Signal #1: ECD1A.ch Signal #2: ECD2B.ch  
 Acq On : 10 Jun 2020 11:35  
 Operator : AJ\MA  
 Sample : I.BLK  
 Misc :  
 ALS Vial : 2 Sample Multiplier: 1

Instrument :  
 ECD\_L  
 ClientSampleId :  
 I.BLK

Integration File signal 1: autoint1.e  
 Integration File signal 2: autoint2.e  
 Quant Time: Jun 10 14:32:20 2020  
 Quant Method : Z:\pestpcbsrv\HPCHEM1\ECD\_L\methods\PL060320.M  
 Quant Title : GC Extractables  
 QLast Update : Thu Jun 04 08:16:22 2020  
 Response via : Initial Calibration  
 Integrator: ChemStation

Volume Inj. : 1 µl  
 Signal #1 Phase : ZB-MR2 Signal #2 Phase: ZB-MR1  
 Signal #1 Info : 30M x 0.32mm x0.2 Signal #2 Info : 30M x 0.32mm x0.5µm

Compound	RT#1	RT#2	Resp#1	Resp#2	ng/ml	ng/ml
-----						
System Monitoring Compounds						
1) SA Tetrachlo...	3.520	4.071	38822549	53445955	22.482	20.541
28) SA Decachlor...	8.294	9.181	34767515	49068462	21.143	20.699

Target Compounds

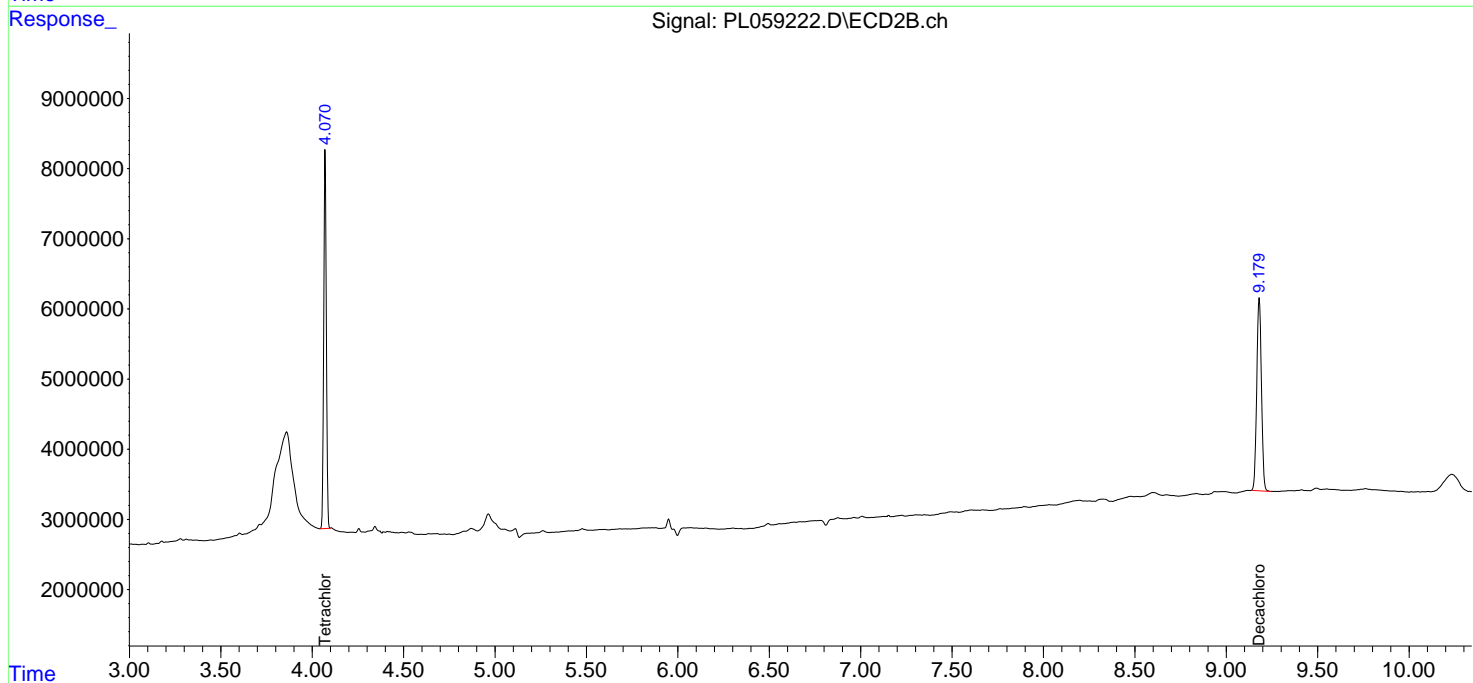
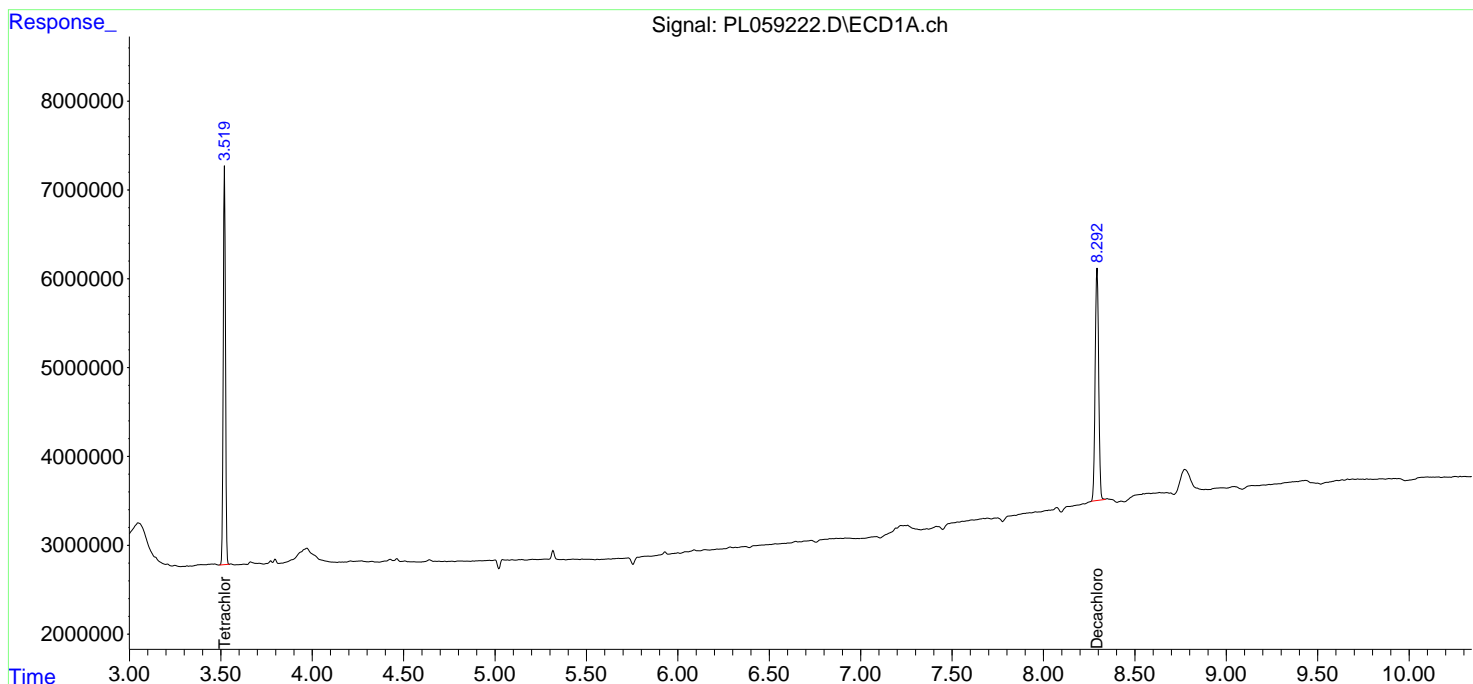
(f)=RT Delta > 1/2 Window (#)=Amounts differ by > 25% (m)=manual int.

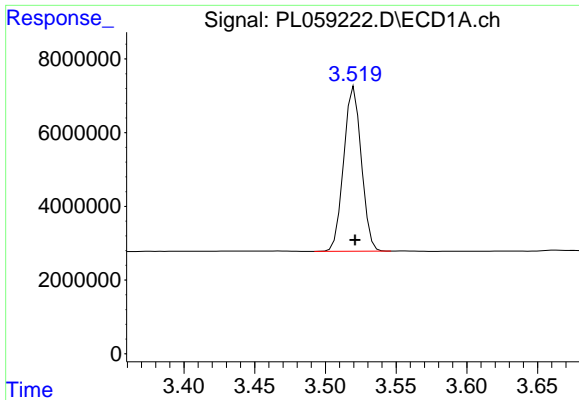
Data Path : Z:\pestpcbsrv\HPCHEM1\ECD\_L\Data\PL061020\  
Data File : PL059222.D  
Signal(s) : Signal #1: ECD1A.ch Signal #2: ECD2B.ch  
Acq On : 10 Jun 2020 11:35  
Operator : AJ\MA  
Sample : I.BLK  
Misc :  
ALS Vial : 2 Sample Multiplier: 1

Instrument :  
ECD\_L  
ClientSampled :  
I.BLK

Integration File signal 1: autoint1.e  
Integration File signal 2: autoint2.e  
Quant Time: Jun 10 14:32:20 2020  
Quant Method : Z:\pestpcbsrv\HPCHEM1\ECD\_L\methods\PL060320.M  
Quant Title : GC Extractables  
QLast Update : Thu Jun 04 08:16:22 2020  
Response via : Initial Calibration  
Integrator: ChemStation

Volume Inj. : 1 µl  
Signal #1 Phase : ZB-MR2 Signal #2 Phase: ZB-MR1  
Signal #1 Info : 30M x 0.32mm x0.2 Signal #2 Info : 30M x 0.32mm x0.5µm

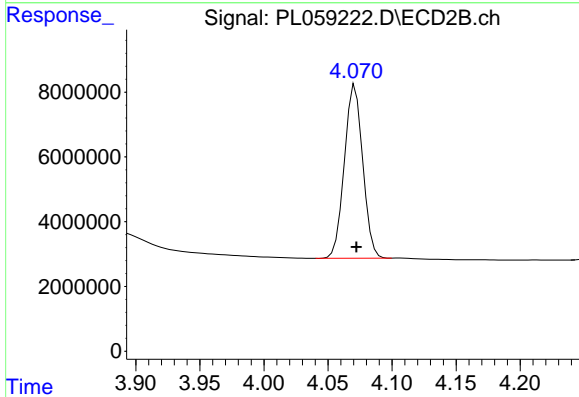




#1 Tetrachloro-m-xylene

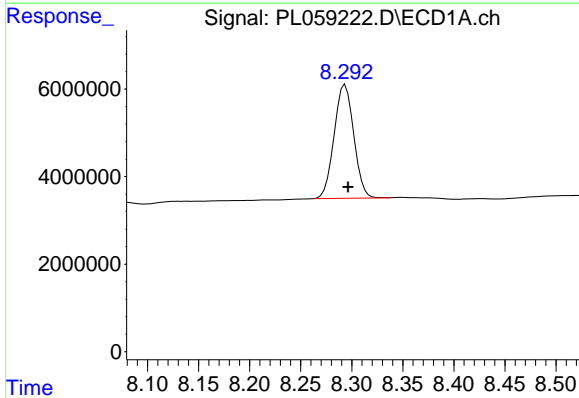
R.T.: 3.520 min  
 Delta R.T.: 0.000 min  
 Response: 38822549  
 Conc: 22.48 ng/ml

Instrument :  
 ECD\_L  
 ClientSampled :  
 I.BLK



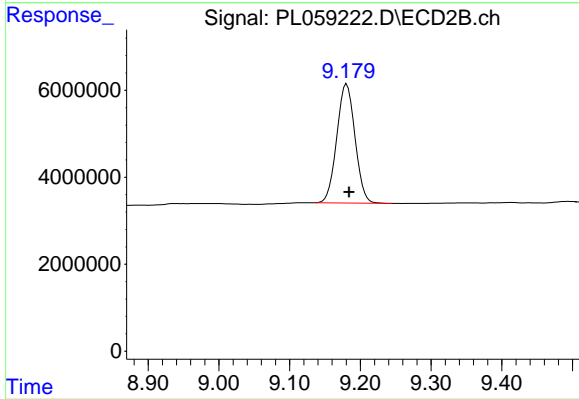
#1 Tetrachloro-m-xylene

R.T.: 4.071 min  
 Delta R.T.: -0.001 min  
 Response: 53445955  
 Conc: 20.54 ng/ml



#28 Decachlorobiphenyl

R.T.: 8.294 min  
 Delta R.T.: -0.003 min  
 Response: 34767515  
 Conc: 21.14 ng/ml



#28 Decachlorobiphenyl

R.T.: 9.181 min  
 Delta R.T.: -0.003 min  
 Response: 49068462  
 Conc: 20.70 ng/ml