

Data Path : Z:\pestpcbsrv\HPCHEM1\ECD_L\Data\PL061021\
 Data File : PL067268.D
 Signal(s) : Signal #1: ECD1A.ch Signal #2: ECD2B.ch
 Acq On : 11 Jun 2021 00:35
 Operator : AR\AJ
 Sample : PB973BL
 Misc :
 ALS Vial : 48 Sample Multiplier: 1

Instrument :
 ECD_L
 ClientSampleId :
 PB136973BL

Integration File signal 1: autoint1.e
 Integration File signal 2: autoint2.e
 Quant Time: Jun 11 02:19:22 2021
 Quant Method : Z:\pestpcbsrv\HPCHEM1\ECD_L\methods\PL061021.M
 Quant Title : GC Extractables
 QLast Update : Fri Jun 11 02:00:12 2021
 Response via : Initial Calibration
 Integrator: ChemStation

Volume Inj. : 1 µl
 Signal #1 Phase : ZB-MR2 Signal #2 Phase: ZB-MR1
 Signal #1 Info : 30M x 0.32mm x0.2 Signal #2 Info : 30M x 0.32mm x0.5µm

Compound	RT#1	RT#2	Resp#1	Resp#2	ng/ml	ng/ml

System Monitoring Compounds						
1) SA Tetrachlo...	4.480	5.529	10199595	17004045	18.552	18.037
28) SA Decachlor...	10.221	11.427	13076664	19474086	18.452	19.551
Target Compounds						
2) A alpha-BHC	5.172	0.000	387143	0	0.526	N.D. #
6) B beta-BHC	5.964f	0.000	417390	0	1.167	N.D. #
7) B delta-BHC	0.000	7.006f	0	2106988	N.D.	1.792 #
21) B Endrin ke...	9.127	0.000	234747	0	0.308	N.D. #

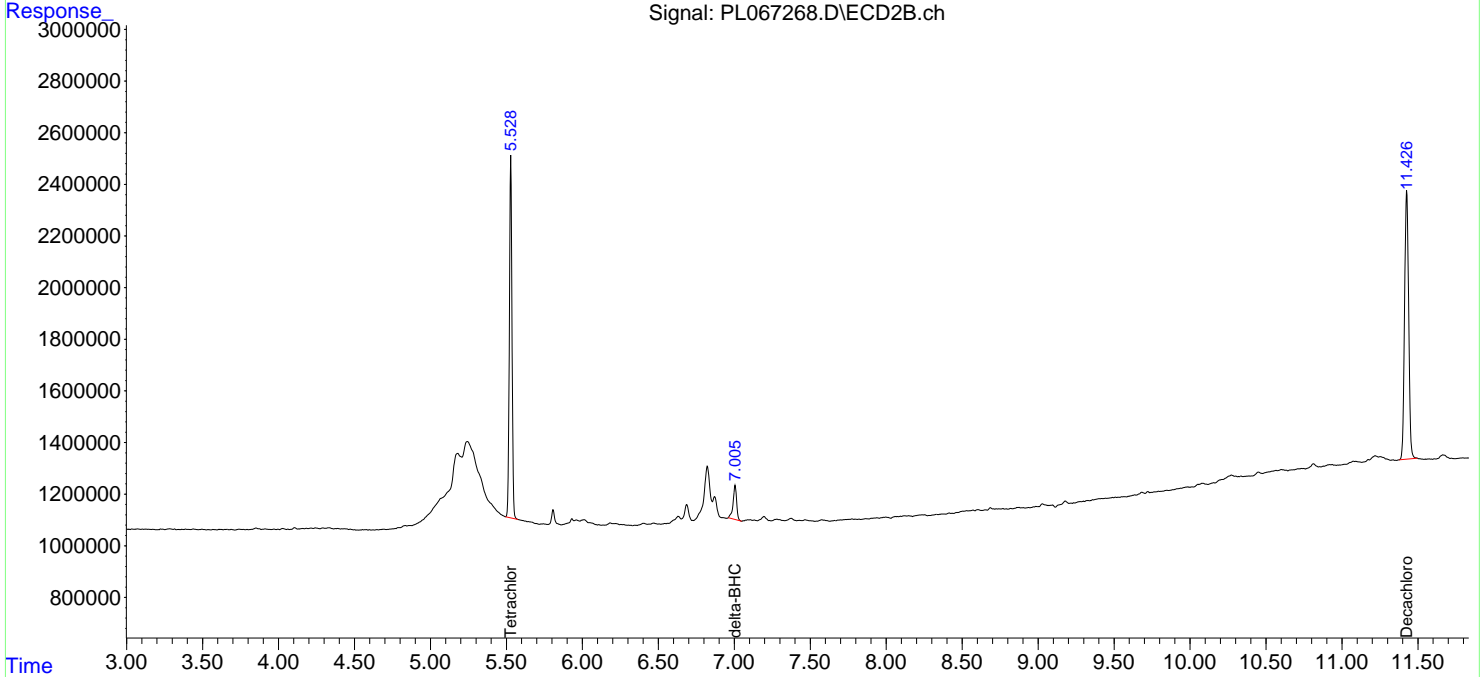
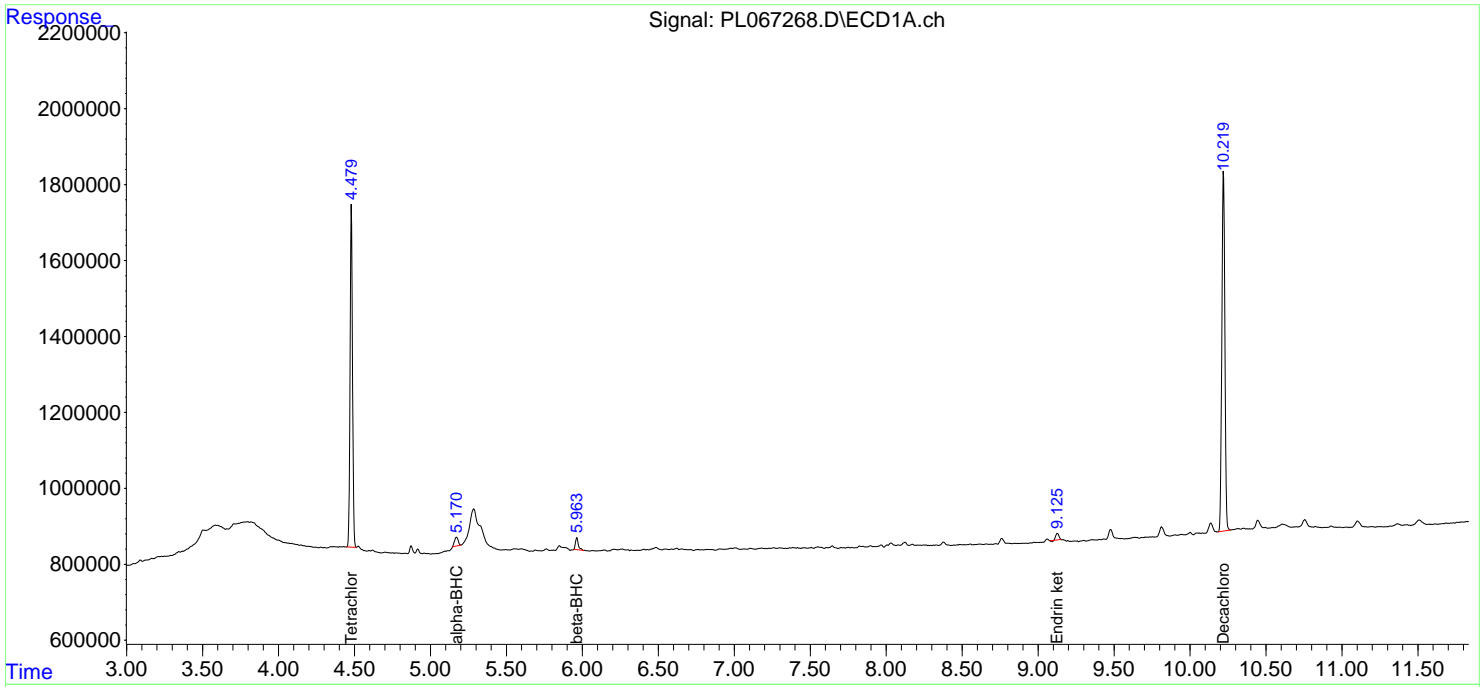
(f)=RT Delta > 1/2 Window (#)=Amounts differ by > 25% (m)=manual int.

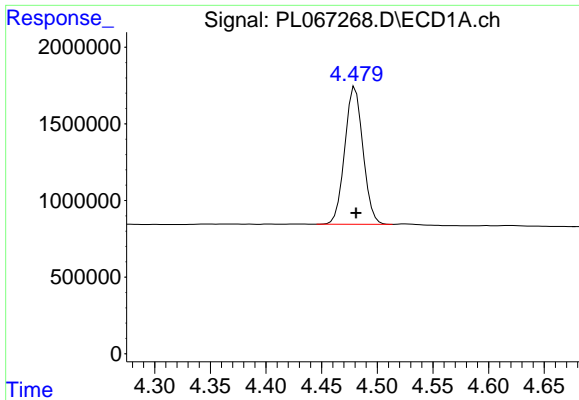
Data Path : Z:\pestpcbsrv\HPCHEM1\ECD_L\Data\PL061021\
 Data File : PL067268.D
 Signal(s) : Signal #1: ECD1A.ch Signal #2: ECD2B.ch
 Acq On : 11 Jun 2021 00:35
 Operator : AR\AJ
 Sample : PB973BL
 Misc :
 ALS Vial : 48 Sample Multiplier: 1

Instrument :
 ECD_L
Client Sampled :
 PB136973BL

Integration File signal 1: autoint1.e
 Integration File signal 2: autoint2.e
 Quant Time: Jun 11 02:19:22 2021
 Quant Method : Z:\pestpcbsrv\HPCHEM1\ECD_L\methods\PL061021.M
 Quant Title : GC Extractables
 QLast Update : Fri Jun 11 02:00:12 2021
 Response via : Initial Calibration
 Integrator: ChemStation

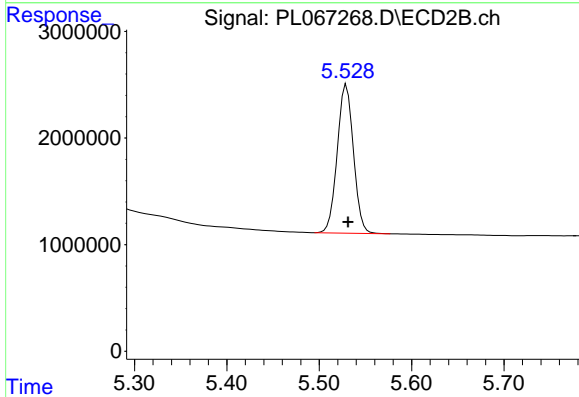
Volume Inj. : 1 µl
 Signal #1 Phase : ZB-MR2 Signal #2 Phase: ZB-MR1
 Signal #1 Info : 30M x 0.32mm x0.2 Signal #2 Info : 30M x 0.32mm x0.5µm



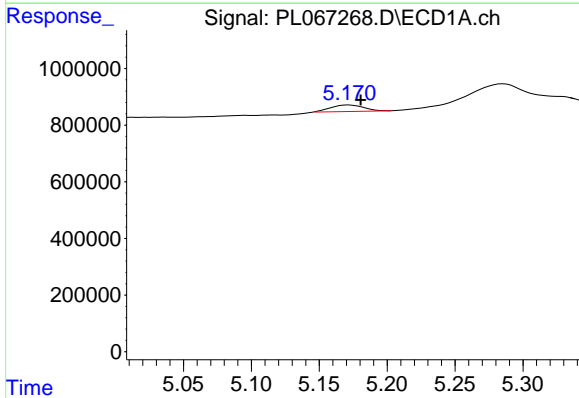


#1 Tetrachloro-m-xylene
 R.T.: 4.480 min
 Delta R.T.: 0.000 min
 Response: 10199595
 Conc: 18.55 ng/ml

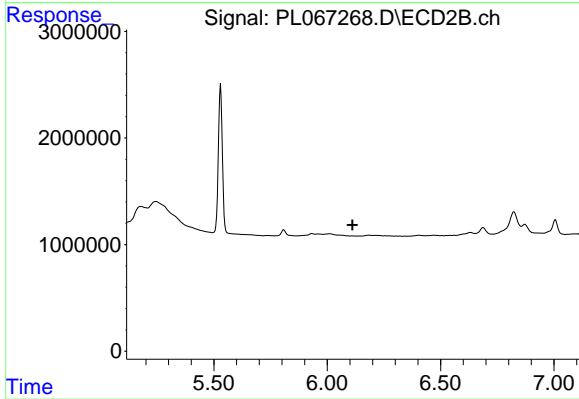
Instrument :
 ECD_L
 ClientSampleId :
 PB136973BL



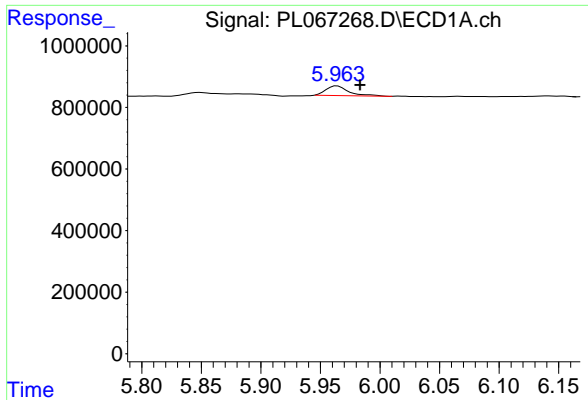
#1 Tetrachloro-m-xylene
 R.T.: 5.529 min
 Delta R.T.: -0.002 min
 Response: 17004045
 Conc: 18.04 ng/ml



#2 alpha-BHC
 R.T.: 5.172 min
 Delta R.T.: -0.009 min
 Response: 387143
 Conc: 0.53 ng/ml

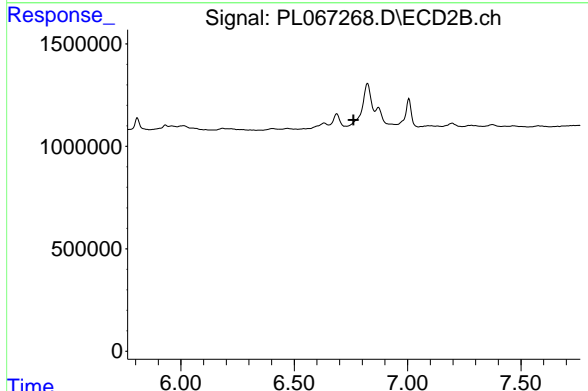


#2 alpha-BHC
 R.T.: 0.000 min
 Exp R.T. : 6.112 min
 Response: 0
 Conc: N.D.

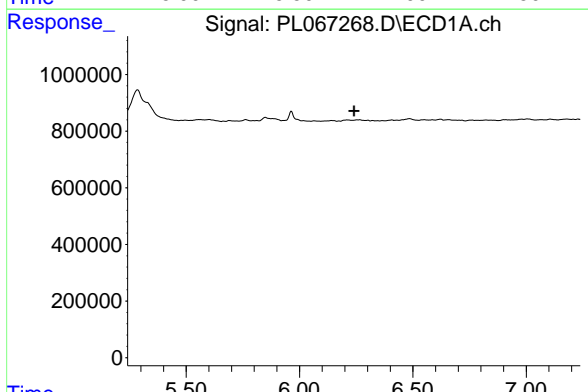


#6 beta-BHC
 R.T.: 5.964 min
 Delta R.T.: -0.019 min
 Response: 417390
 Conc: 1.17 ng/ml

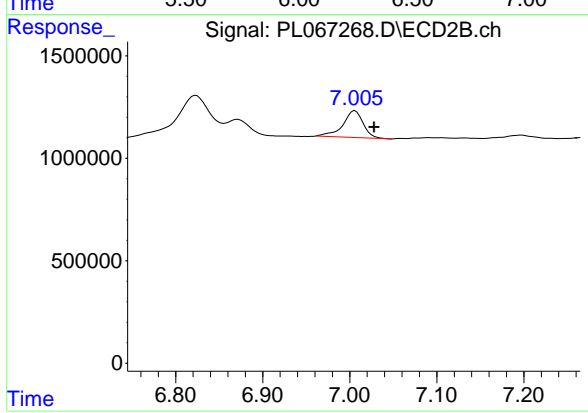
Instrument :
 ECD_L
 ClientSampleId :
 PB136973BL



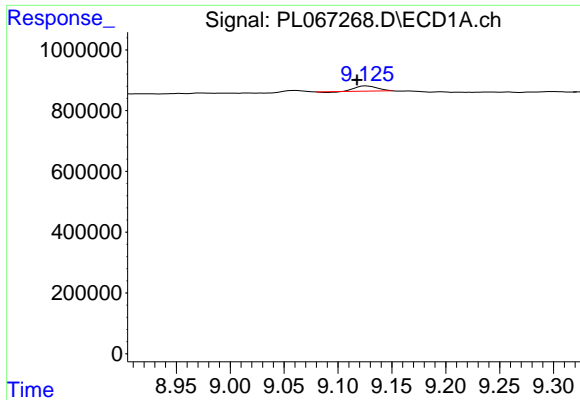
#6 beta-BHC
 R.T.: 0.000 min
 Exp R.T. : 6.762 min
 Response: 0
 Conc: N.D.



#7 delta-BHC
 R.T.: 0.000 min
 Exp R.T. : 6.241 min
 Response: 0
 Conc: N.D.

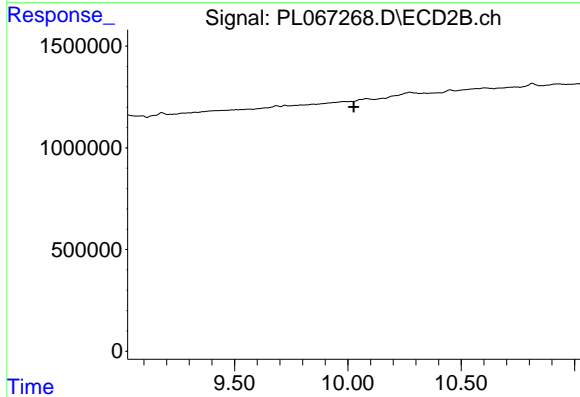


#7 delta-BHC
 R.T.: 7.006 min
 Delta R.T.: -0.022 min
 Response: 2106988
 Conc: 1.79 ng/ml

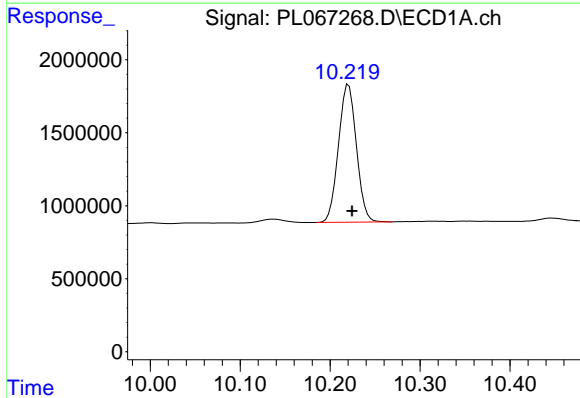


#21 Endrin ketone
 R.T.: 9.127 min
 Delta R.T.: 0.009 min
 Response: 234747
 Conc: 0.31 ng/ml

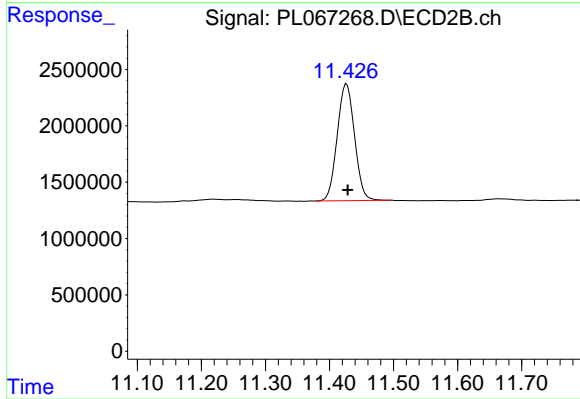
Instrument :
 ECD_L
 ClientSampleId :
 PB136973BL



#21 Endrin ketone
 R.T.: 0.000 min
 Exp R.T. : 10.027 min
 Response: 0
 Conc: N.D.



#28 Decachlorobiphenyl
 R.T.: 10.221 min
 Delta R.T.: -0.004 min
 Response: 13076664
 Conc: 18.45 ng/ml



#28 Decachlorobiphenyl
 R.T.: 11.427 min
 Delta R.T.: -0.002 min
 Response: 19474086
 Conc: 19.55 ng/ml