

Data Path : Z:\pestpcbsrv\HPCHEM1\ECD_L\Data\PL061021\
 Data File : PL067279.D
 Signal(s) : Signal #1: ECD1A.ch Signal #2: ECD2B.ch
 Acq On : 11 Jun 2021 05:01
 Operator : AR\AJ
 Sample : I.BLK
 Misc :
 ALS Vial : 2 Sample Multiplier: 1

Instrument :
 ECD_L
 ClientSampleId :
 I.BLK

Integration File signal 1: autoint1.e
 Integration File signal 2: autoint2.e
 Quant Time: Jun 11 06:46:18 2021
 Quant Method : Z:\pestpcbsrv\HPCHEM1\ECD_L\methods\PL061021.M
 Quant Title : GC Extractables
 QLast Update : Fri Jun 11 02:00:12 2021
 Response via : Initial Calibration
 Integrator: ChemStation

Volume Inj. : 1 µl
 Signal #1 Phase : ZB-MR2 Signal #2 Phase: ZB-MR1
 Signal #1 Info : 30M x 0.32mm x0.2 Signal #2 Info : 30M x 0.32mm x0.5µm

Compound	RT#1	RT#2	Resp#1	Resp#2	ng/ml	ng/ml

System Monitoring Compounds						
1) SA Tetrachlo...	4.480	5.530	10673424	17649536	19.414	18.722
28) SA Decachlor...	10.221	11.427	12425613	19438889	17.533	19.516
Target Compounds						
2) A alpha-BHC	5.174	0.000	399065	0	0.543	N.D. #
4) MA Heptachlor	5.990f	0.000	514271	0	0.682	N.D. #
6) B beta-BHC	5.990	0.000	514271	0	1.437	N.D. #
7) B delta-BHC	0.000	7.000f	0	1834118	N.D.	1.560 #
8) B Heptachlo...	0.000	7.996	0	583146	N.D.	0.582 #
14) MA Endrin	7.896f	0.000	171596	0	0.262	N.D. #
18) B Endrin al...	8.379	0.000	956712	0	1.890	N.D. #
21) B Endrin ke...	9.128	0.000	814006	0	1.069	N.D. #
22) Mirex	9.299	0.000	130559	0	0.207	N.D. #
24) Chlordane-2	6.487	0.000	516886	0	19.302	N.D. #

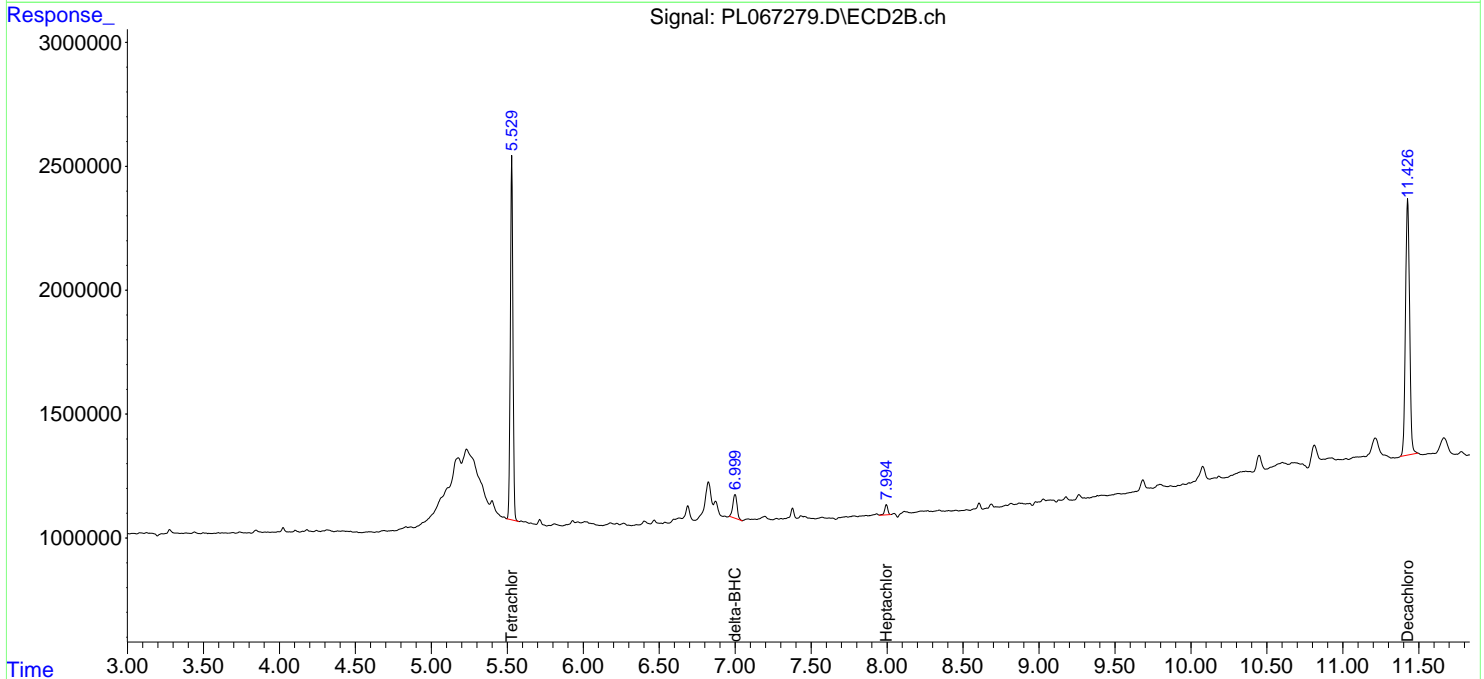
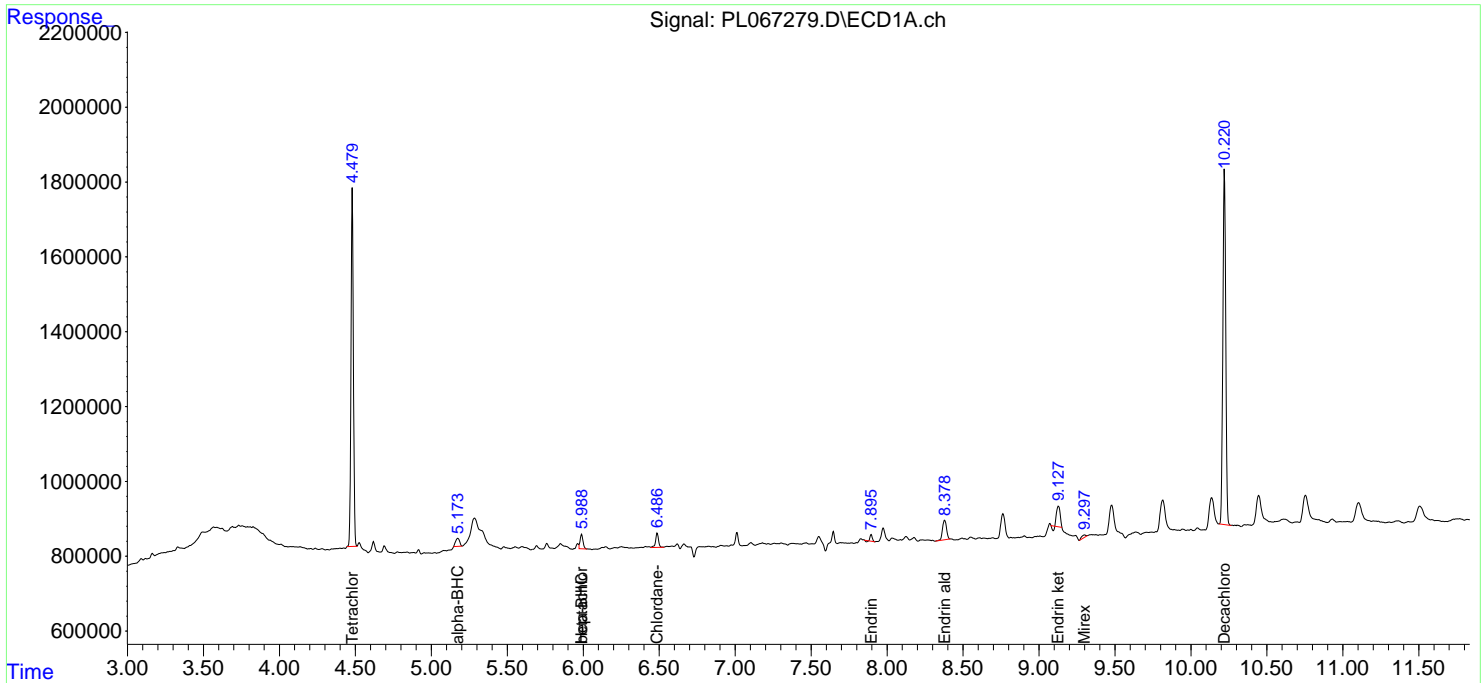
(f)=RT Delta > 1/2 Window (#)=Amounts differ by > 25% (m)=manual int.

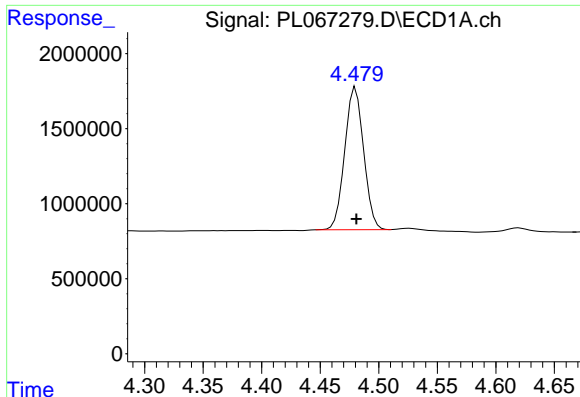
Data Path : Z:\pestpcbsrv\HPCHEM1\ECD_L\Data\PL061021\
 Data File : PL067279.D
 Signal(s) : Signal #1: ECD1A.ch Signal #2: ECD2B.ch
 Acq On : 11 Jun 2021 05:01
 Operator : AR\AJ
 Sample : I.BLK
 Misc :
 ALS Vial : 2 Sample Multiplier: 1

Instrument :
 ECD_L
 ClientSampled :
 I.BLK

Integration File signal 1: autoint1.e
 Integration File signal 2: autoint2.e
 Quant Time: Jun 11 06:46:18 2021
 Quant Method : Z:\pestpcbsrv\HPCHEM1\ECD_L\methods\PL061021.M
 Quant Title : GC Extractables
 QLast Update : Fri Jun 11 02:00:12 2021
 Response via : Initial Calibration
 Integrator: ChemStation

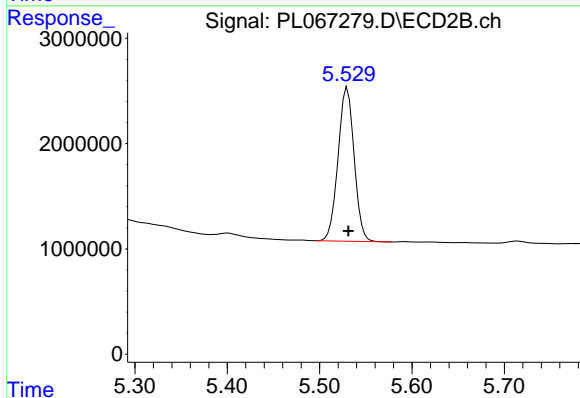
Volume Inj. : 1 µl
 Signal #1 Phase : ZB-MR2 Signal #2 Phase: ZB-MR1
 Signal #1 Info : 30M x 0.32mm x0.2 Signal #2 Info : 30M x 0.32mm x0.5µm



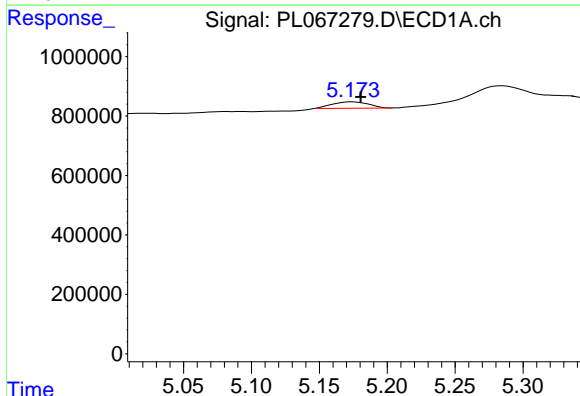


#1 Tetrachloro-m-xylene
 R.T.: 4.480 min
 Delta R.T.: 0.000 min
 Response: 10673424
 Conc: 19.41 ng/ml

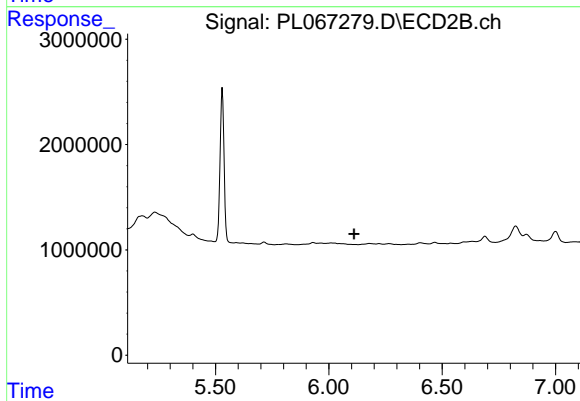
Instrument :
 ECD_L
 ClientSampled :
 I.BLK



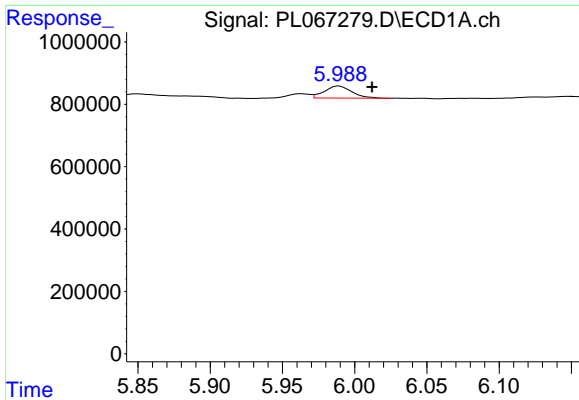
#1 Tetrachloro-m-xylene
 R.T.: 5.530 min
 Delta R.T.: 0.000 min
 Response: 17649536
 Conc: 18.72 ng/ml



#2 alpha-BHC
 R.T.: 5.174 min
 Delta R.T.: -0.006 min
 Response: 399065
 Conc: 0.54 ng/ml

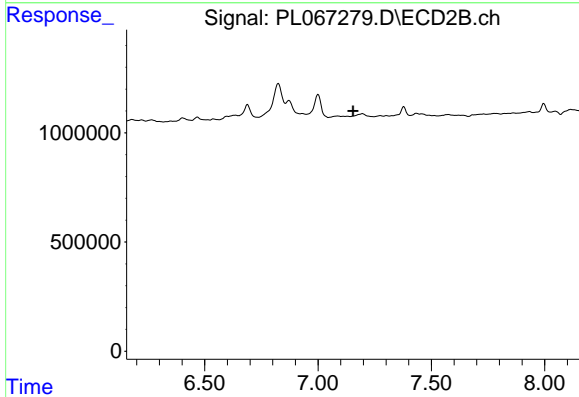


#2 alpha-BHC
 R.T.: 0.000 min
 Exp R.T. : 6.112 min
 Response: 0
 Conc: N.D.

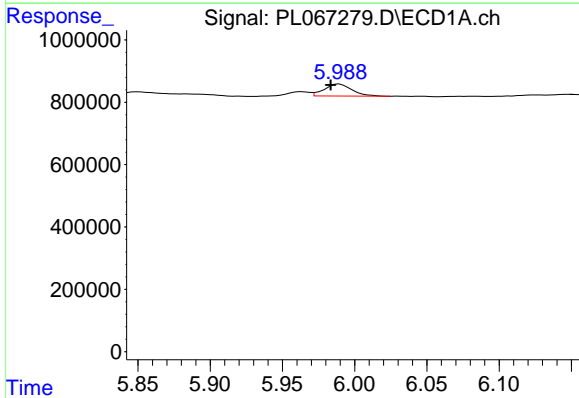


#4 Heptachlor
 R.T.: 5.990 min
 Delta R.T.: -0.022 min
 Response: 514271
 Conc: 0.68 ng/ml

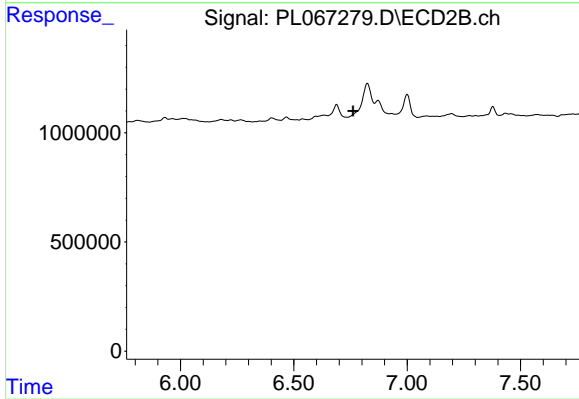
Instrument :
 ECD_L
 ClientSampled :
 I.BLK



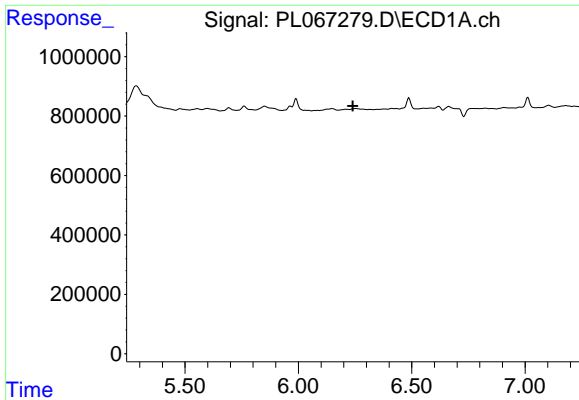
#4 Heptachlor
 R.T.: 0.000 min
 Exp R.T. : 7.155 min
 Response: 0
 Conc: N.D.



#6 beta-BHC
 R.T.: 5.990 min
 Delta R.T.: 0.006 min
 Response: 514271
 Conc: 1.44 ng/ml

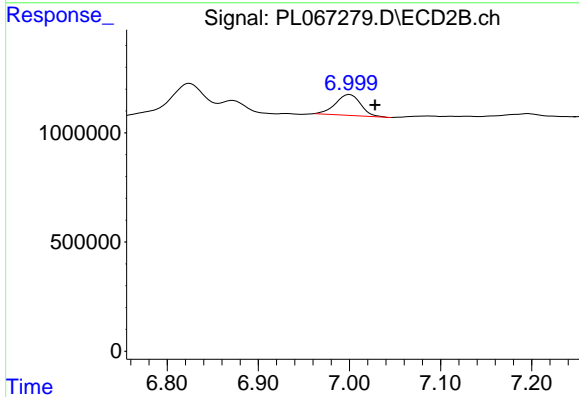


#6 beta-BHC
 R.T.: 0.000 min
 Exp R.T. : 6.762 min
 Response: 0
 Conc: N.D.

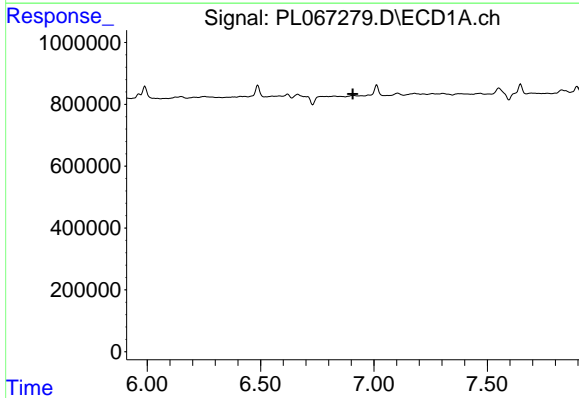


#7 delta-BHC
 R.T.: 0.000 min
 Exp R.T. : 6.241 min
 Response: 0
 Conc: N.D.

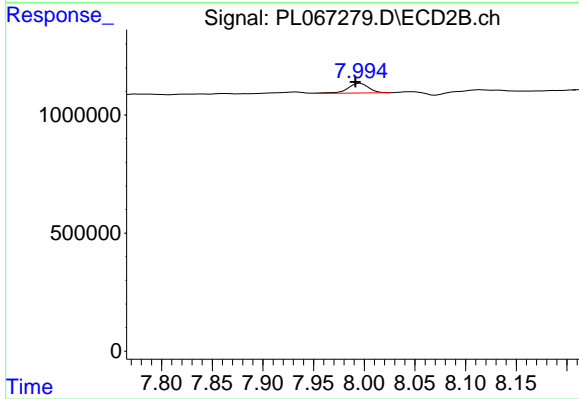
Instrument :
 ECD_L
 ClientSampleId :
 I.BLK



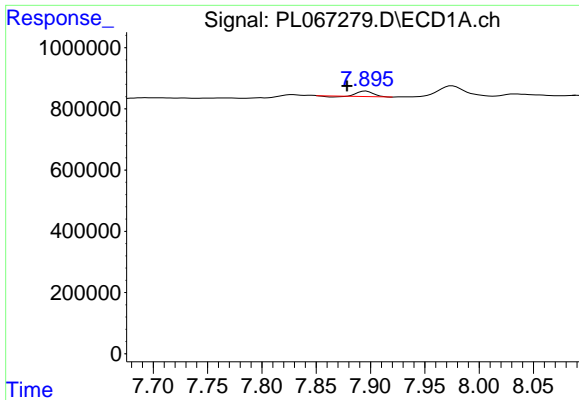
#7 delta-BHC
 R.T.: 7.000 min
 Delta R.T.: -0.028 min
 Response: 1834118
 Conc: 1.56 ng/ml



#8 Heptachlor epoxide
 R.T.: 0.000 min
 Exp R.T. : 6.907 min
 Response: 0
 Conc: N.D.

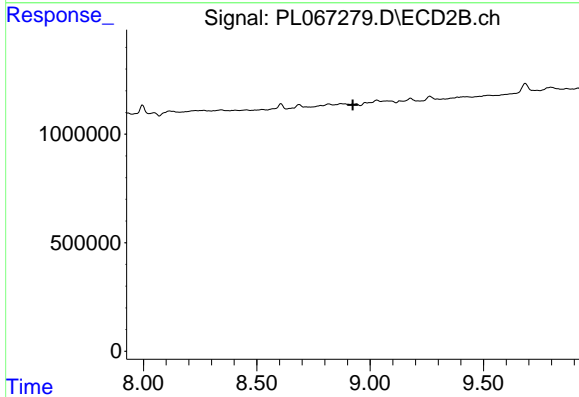


#8 Heptachlor epoxide
 R.T.: 7.996 min
 Delta R.T.: 0.004 min
 Response: 583146
 Conc: 0.58 ng/ml

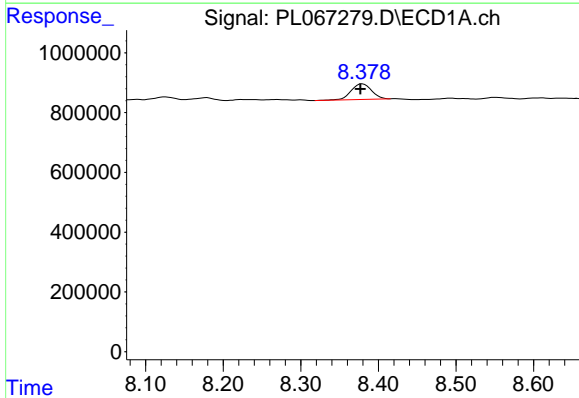


#14 Endrin
 R.T.: 7.896 min
 Delta R.T.: 0.018 min
 Response: 171596
 Conc: 0.26 ng/ml

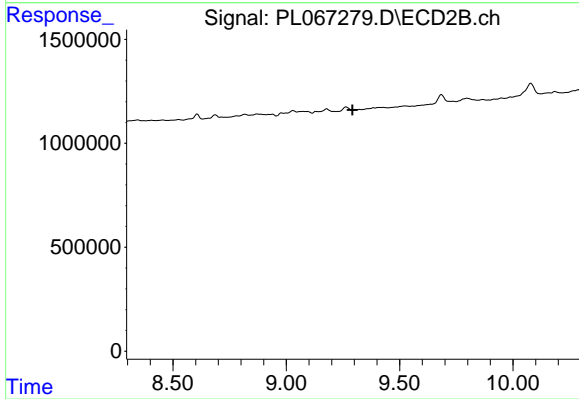
Instrument :
 ECD_L
 ClientSampled :
 I.BLK



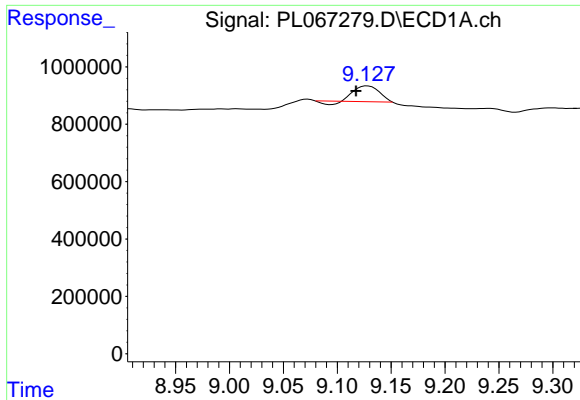
#14 Endrin
 R.T.: 0.000 min
 Exp R.T. : 8.924 min
 Response: 0
 Conc: N.D.



#18 Endrin aldehyde
 R.T.: 8.379 min
 Delta R.T.: 0.002 min
 Response: 956712
 Conc: 1.89 ng/ml

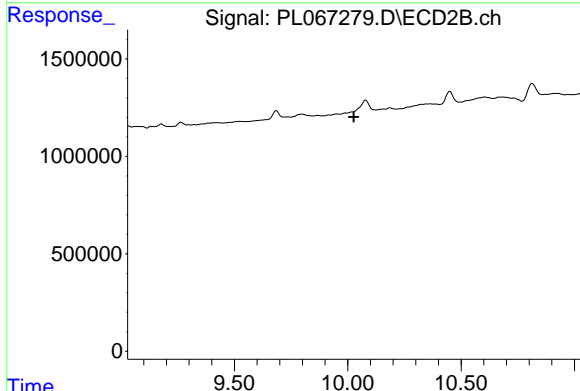


#18 Endrin aldehyde
 R.T.: 0.000 min
 Exp R.T. : 9.292 min
 Response: 0
 Conc: N.D.

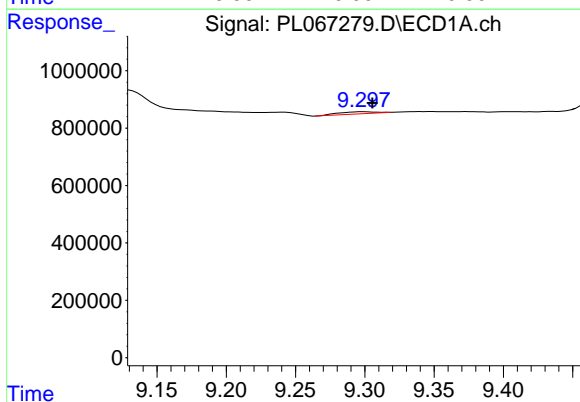


#21 Endrin ketone
 R.T.: 9.128 min
 Delta R.T.: 0.011 min
 Response: 814006
 Conc: 1.07 ng/ml

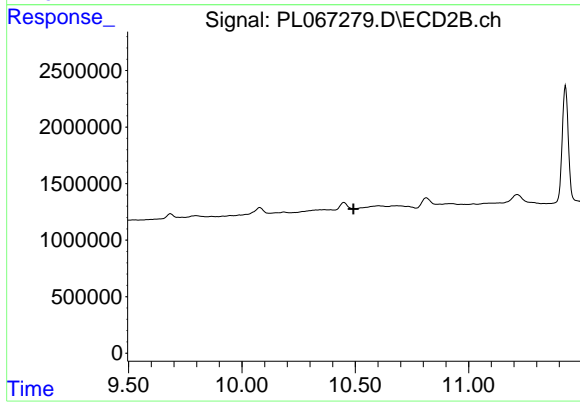
Instrument :
 ECD_L
 ClientSampled :
 I.BLK



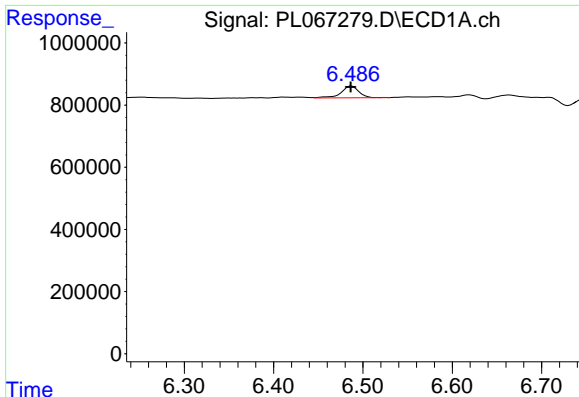
#21 Endrin ketone
 R.T.: 0.000 min
 Exp R.T. : 10.027 min
 Response: 0
 Conc: N.D.



#22 Mirex
 R.T.: 9.299 min
 Delta R.T.: -0.006 min
 Response: 130559
 Conc: 0.21 ng/ml



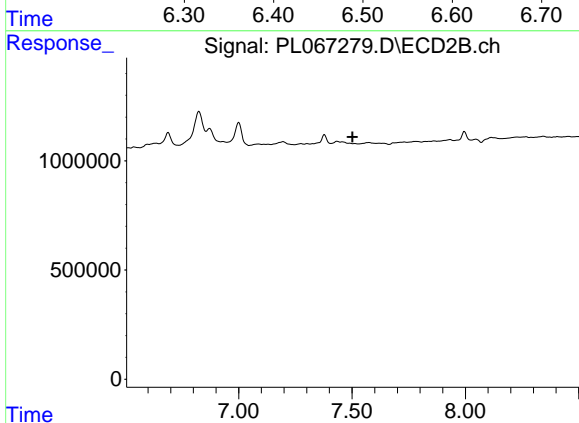
#22 Mirex
 R.T.: 0.000 min
 Exp R.T. : 10.492 min
 Response: 0
 Conc: N.D.



#24 Chlordane-2

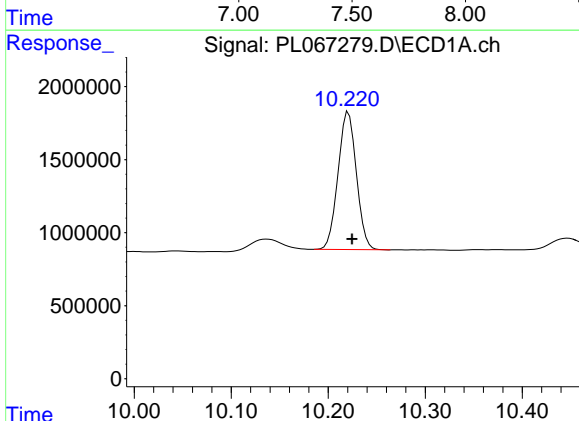
R.T.: 6.487 min
 Delta R.T.: 0.001 min
 Response: 516886
 Conc: 19.30 ng/ml

Instrument :
 ECD_L
 ClientSampled :
 I.BLK



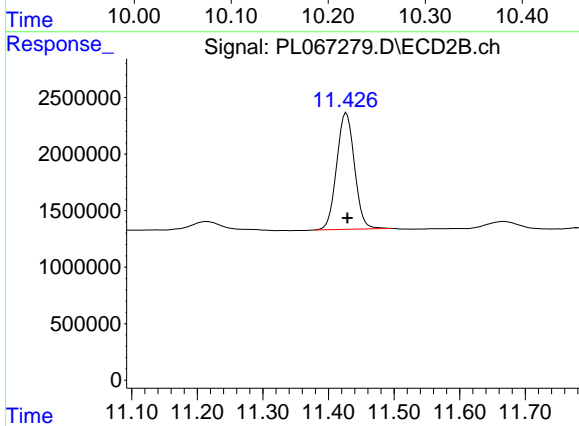
#24 Chlordane-2

R.T.: 0.000 min
 Exp R.T. : 7.503 min
 Response: 0
 Conc: N.D.



#28 Decachlorobiphenyl

R.T.: 10.221 min
 Delta R.T.: -0.003 min
 Response: 12425613
 Conc: 17.53 ng/ml



#28 Decachlorobiphenyl

R.T.: 11.427 min
 Delta R.T.: -0.001 min
 Response: 19438889
 Conc: 19.52 ng/ml