

Data Path : Z:\pestpcbsrv\HPCHEM1\ECD_L\Data\PL061119\
 Data File : PL049421.D
 Signal(s) : Signal #1: ECD1A.ch Signal #2: ECD2B.ch
 Acq On : 11 Jun 2019 13:58
 Operator : SM\AJ
 Sample : K3163-05
 Misc :
 ALS Vial : 12 Sample Multiplier: 1

Instrument :
 ECD_L
 ClientSampleId :
 SU-04-060719-A

Integration File signal 1: autoint1.e
 Integration File signal 2: autoint2.e
 Quant Time: Jun 12 01:12:06 2019
 Quant Method : Z:\pestpcbsrv\HPCHEM1\ECD_L\methods\PL053019.M
 Quant Title : GC Extractables
 QLast Update : Fri May 31 01:35:35 2019
 Response via : Initial Calibration
 Integrator: ChemStation

Volume Inj. : 1 µl
 Signal #1 Phase : ZB-MR2 Signal #2 Phase: ZB-MR1
 Signal #1 Info : 30M x 0.32mm x0.2 Signal #2 Info : 30M x 0.32mm x0.5µm

Compound	RT#1	RT#2	Resp#1	Resp#2	ng/ml	ng/ml

System Monitoring Compounds						
1) SA Tetrachlo...	3.325	3.936	113.3E6	27763866	10.286	9.610
28) SA Decachlor...	7.991	8.971	105.8E6	35115466	8.319	10.515 #
Target Compounds						
6) B beta-BHC	0.000	4.803f	0	5516441	N.D.	3.203 #
10) B gamma-Chl...	5.230f	6.034	12213608	1502485	0.765	0.434 #
11) B alpha-Chl...	0.000	6.107	0	6149995	N.D.	1.773 #
12) B 4,4'-DDE	5.434	6.263	23287475	6161740	1.489	1.877 #
17) MA 4,4'-DDT	6.177	7.053	10620588	3030497	0.863	1.081 #

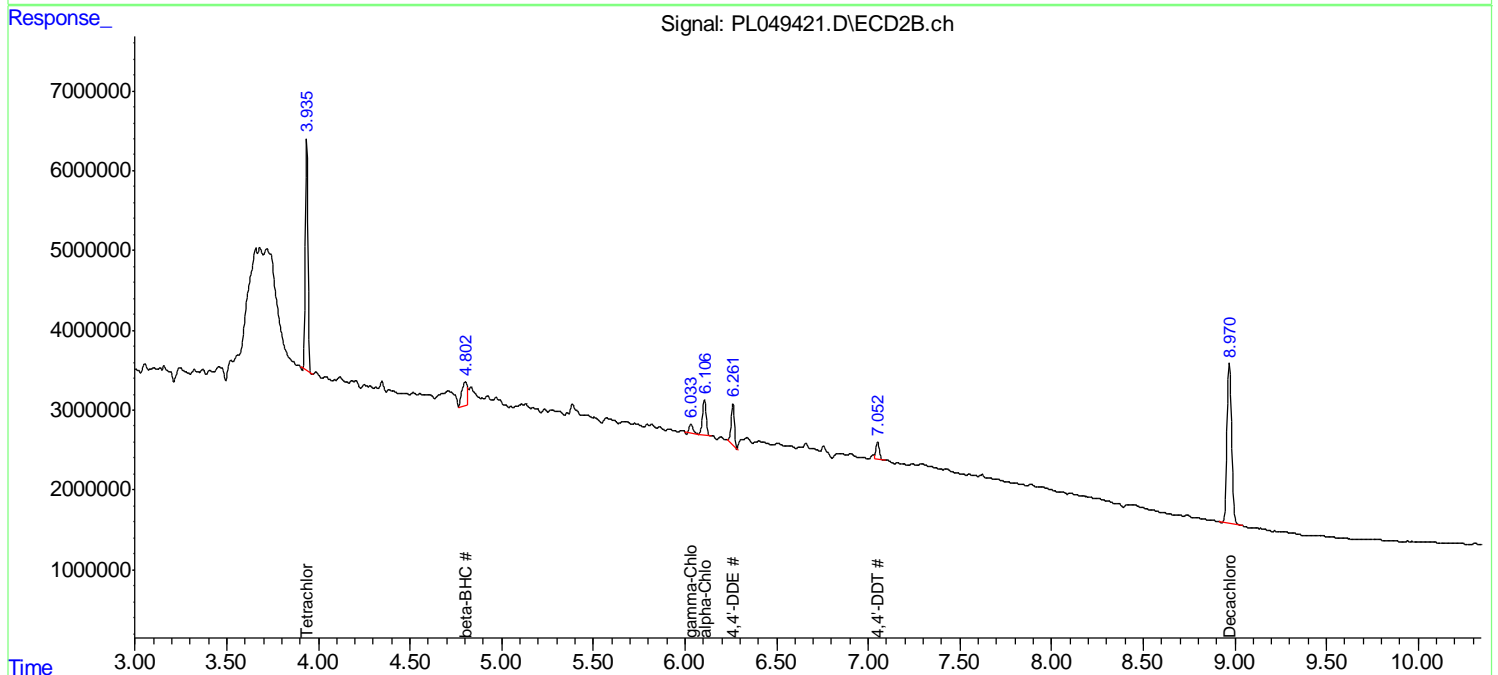
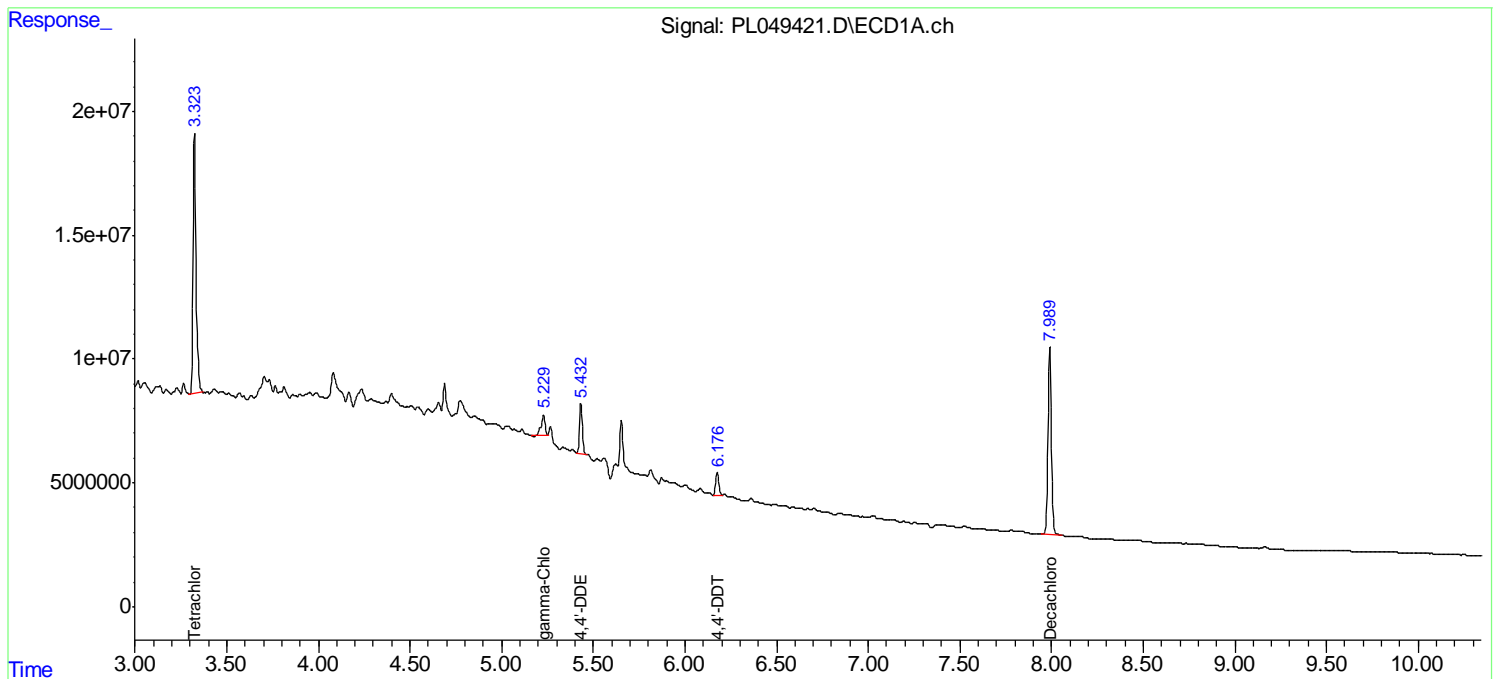
(f)=RT Delta > 1/2 Window (#)=Amounts differ by > 25% (m)=manual int.

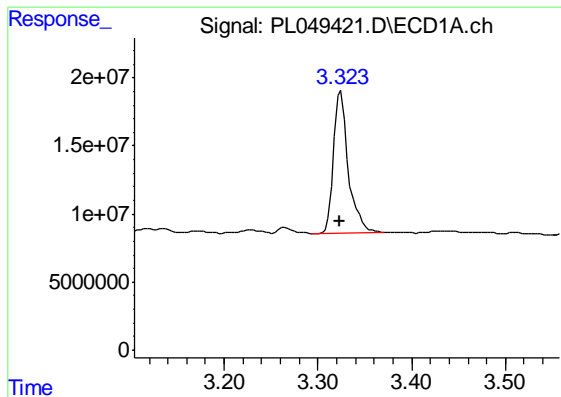
Data Path : Z:\pestpcbsrv\HPCHEM1\ECD_L\Data\PL061119\
 Data File : PL049421.D
 Signal(s) : Signal #1: ECD1A.ch Signal #2: ECD2B.ch
 Acq On : 11 Jun 2019 13:58
 Operator : SM\AJ
 Sample : K3163-05
 Misc :
 ALS Vial : 12 Sample Multiplier: 1

Instrument :
 ECD_L
 ClientSampleId :
 SU-04-060719-A

Integration File signal 1: autoint1.e
 Integration File signal 2: autoint2.e
 Quant Time: Jun 12 01:12:06 2019
 Quant Method : Z:\pestpcbsrv\HPCHEM1\ECD_L\methods\PL053019.M
 Quant Title : GC Extractables
 QLast Update : Fri May 31 01:35:35 2019
 Response via : Initial Calibration
 Integrator: ChemStation

Volume Inj. : 1 µl
 Signal #1 Phase : ZB-MR2 Signal #2 Phase: ZB-MR1
 Signal #1 Info : 30M x 0.32mm x0.2 Signal #2 Info : 30M x 0.32mm x0.5µm

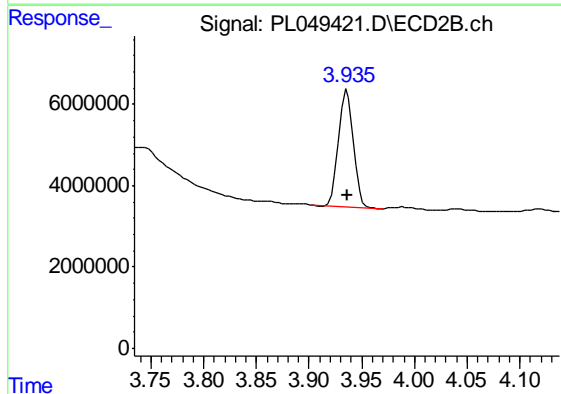




#1 Tetrachloro-m-xylene

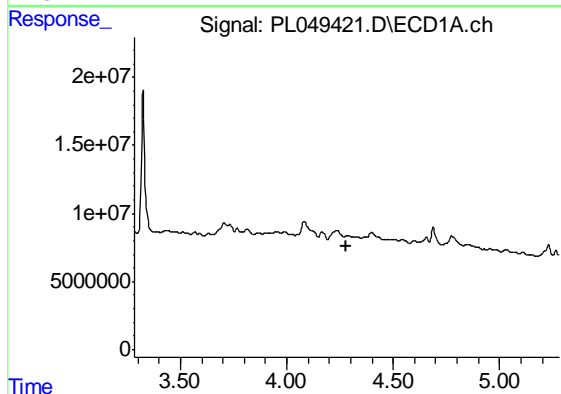
R.T.: 3.325 min
 Delta R.T.: 0.000 min
 Response: 113341405
 Conc: 10.29 ng/ml

Instrument :
 ECD_L
 ClientSampleId :
 SU-04-060719-A



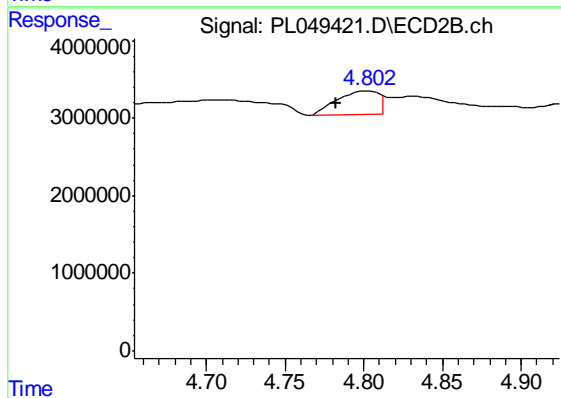
#1 Tetrachloro-m-xylene

R.T.: 3.936 min
 Delta R.T.: 0.000 min
 Response: 27763866
 Conc: 9.61 ng/ml



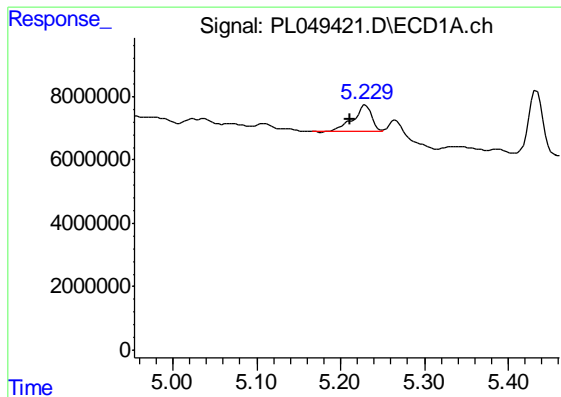
#6 beta-BHC

R.T.: 0.000 min
 Exp R.T. : 4.282 min
 Response: 0
 Conc: N.D.



#6 beta-BHC

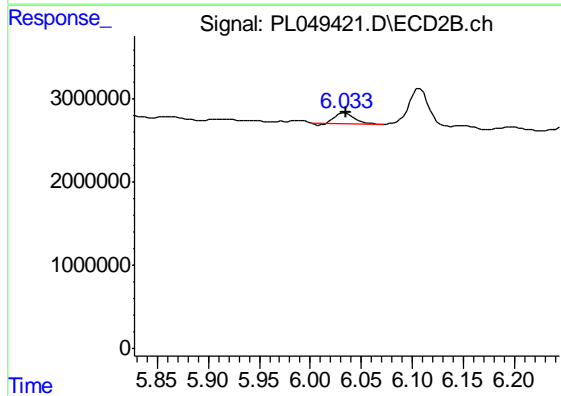
R.T.: 4.803 min
 Delta R.T.: 0.021 min
 Response: 5516441
 Conc: 3.20 ng/ml



#10 gamma-Chlordane

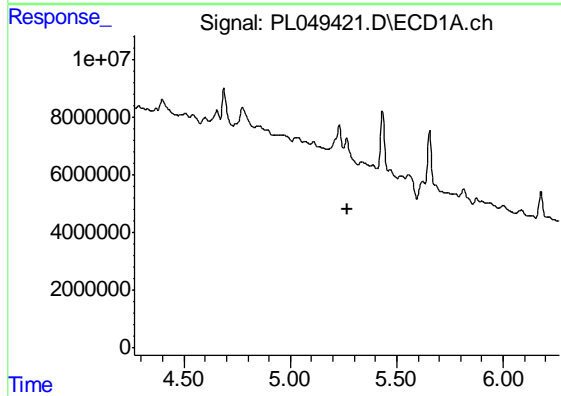
R.T.: 5.230 min
 Delta R.T.: 0.019 min
 Response: 12213608
 Conc: 0.77 ng/ml

Instrument :
 ECD_L
 ClientSampleId :
 SU-04-060719-A



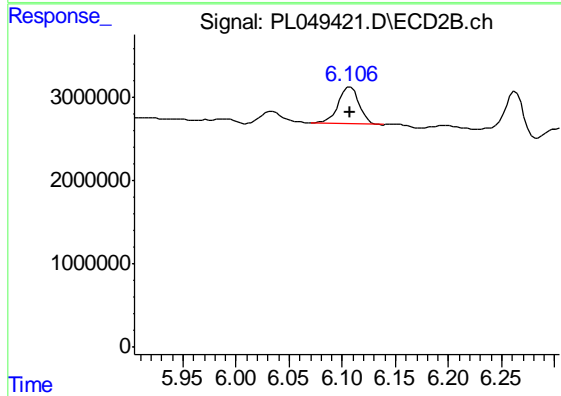
#10 gamma-Chlordane

R.T.: 6.034 min
 Delta R.T.: 0.000 min
 Response: 1502485
 Conc: 0.43 ng/ml



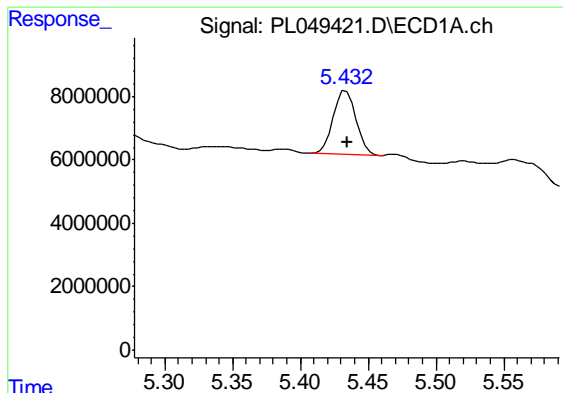
#11 alpha-Chlordane

R.T.: 0.000 min
 Exp R.T. : 5.267 min
 Response: 0
 Conc: N.D.



#11 alpha-Chlordane

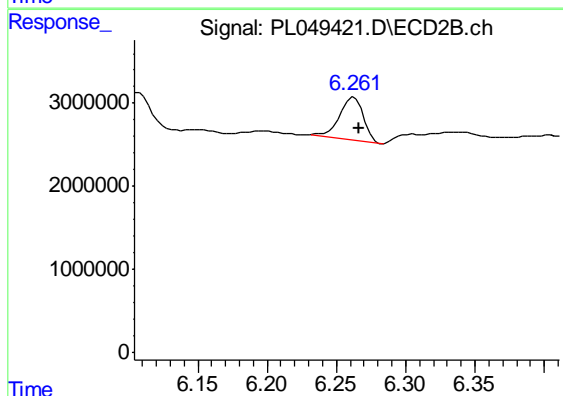
R.T.: 6.107 min
 Delta R.T.: 0.000 min
 Response: 6149995
 Conc: 1.77 ng/ml



#12 4,4'-DDE

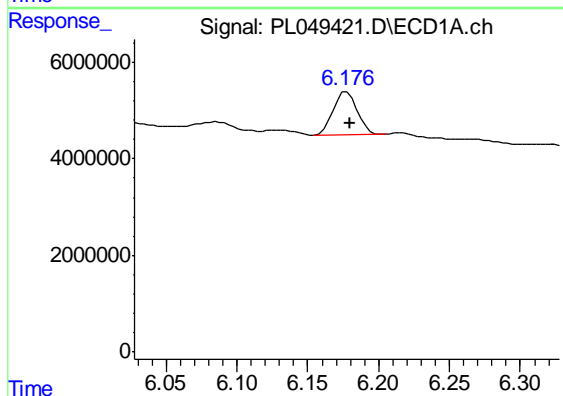
R.T.: 5.434 min
 Delta R.T.: -0.001 min
 Response: 23287475
 Conc: 1.49 ng/ml

Instrument :
 ECD_L
 ClientSampleId :
 SU-04-060719-A



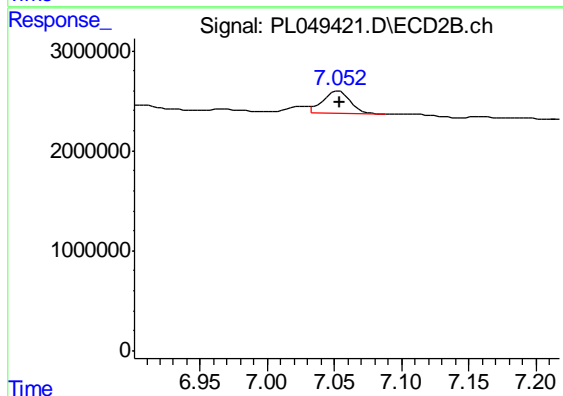
#12 4,4'-DDE

R.T.: 6.263 min
 Delta R.T.: -0.004 min
 Response: 6161740
 Conc: 1.88 ng/ml



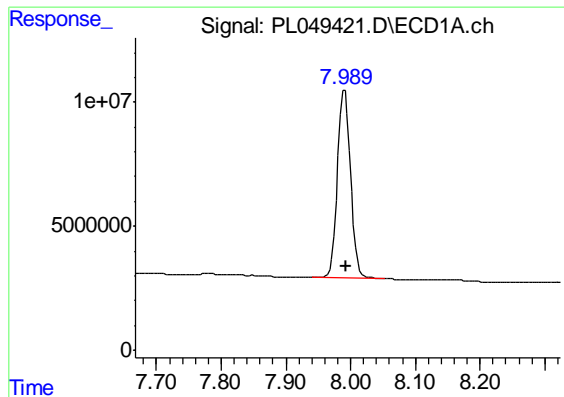
#17 4,4'-DDT

R.T.: 6.177 min
 Delta R.T.: -0.002 min
 Response: 10620588
 Conc: 0.86 ng/ml



#17 4,4'-DDT

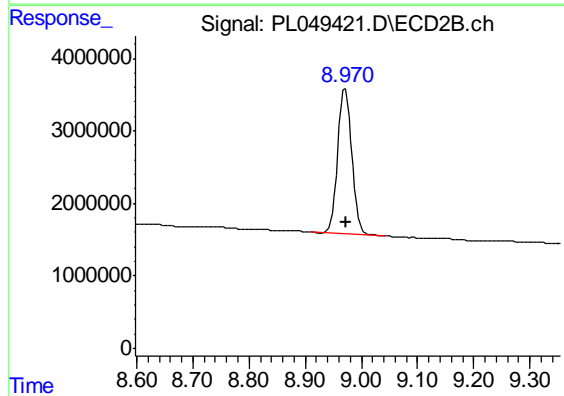
R.T.: 7.053 min
 Delta R.T.: 0.000 min
 Response: 3030497
 Conc: 1.08 ng/ml



#28 Decachlorobiphenyl

R.T.: 7.991 min
Delta R.T.: -0.002 min
Response: 105782647
Conc: 8.32 ng/ml

Instrument :
ECD_L
ClientSampleId :
SU-04-060719-A



#28 Decachlorobiphenyl

R.T.: 8.971 min
Delta R.T.: -0.001 min
Response: 35115466
Conc: 10.51 ng/ml