

Data Path : Z:\pestpcbsrv\HPCHEM1\ECD_L\Data\PL061120\
 Data File : PL059260.D
 Signal(s) : Signal #1: ECD1A.ch Signal #2: ECD2B.ch
 Acq On : 11 Jun 2020 19:30
 Operator : AJ\MA
 Sample : L2970-03
 Misc :
 ALS Vial : 26 Sample Multiplier: 1

Instrument :
 ECD_L
 ClientSampled :

Integration File signal 1: autoint1.e
 Integration File signal 2: autoint2.e
 Quant Time: Jun 12 01:48:51 2020
 Quant Method : Z:\pestpcbsrv\HPCHEM1\ECD_L\methods\PL060320.M
 Quant Title : GC Extractables
 QLast Update : Thu Jun 04 08:16:22 2020
 Response via : Initial Calibration
 Integrator: ChemStation

Volume Inj. : 1 µl
 Signal #1 Phase : ZB-MR2 Signal #2 Phase: ZB-MR1
 Signal #1 Info : 30M x 0.32mm x0.2 Signal #2 Info : 30M x 0.32mm x0.5µm

	Compound	RT#1	RT#2	Resp#1	Resp#2	ng/ml	ng/ml

System Monitoring Compounds							
1)	SA Tetrachlo...	3.520	4.073	36057954	55945339	20.881	21.502
28)	SA Decachlor...	8.292	9.182	26483206	40416134	16.105	17.049
Target Compounds							
2)	A alpha-BHC	3.983f	0.000	1294563	0	0.517	N.D. #
3)	MA gamma-BHC...	4.251	4.782f	1478922	-171025	0.674	N.D. #
4)	MA Heptachlor	4.554	5.264	2035972	2156517	0.979	0.625 #
5)	MB Aldrin	4.802	5.575	412586	3747400	0.232	1.191 #
6)	B beta-BHC	4.493	0.000	637076	0	0.670	N.D. #
7)	B delta-BHC	4.703	5.112f	747685	6523396	0.376	2.325 #
8)	Heptachlo...	5.267f	5.985f	1077336	2367036	0.631	0.855 #
9)	A Endosulfan I	5.606f	6.319	2655342	1702193	1.698	0.608 #
10)	B gamma-Chl...	5.476	6.181f	2086744	7217088	1.246	2.412 #
11)	B alpha-Chl...	5.534	6.270	790706	3647928	0.474	1.200 #
12)	B 4,4'-DDE	5.695	6.425	517802	440026	0.341	0.158 #
13)	MA Dieldrin	5.827	6.578	240496	277585	0.148	0.095 #
14)	MA Endrin	6.085	6.795	638062	359469	0.421	0.144 #
15)	B Endosulfa...	6.362	7.006	1018453	3724548	0.659	1.430 #
16)	A 4,4'-DDD	6.212	6.913	924889	2655373	0.700	1.144 #
17)	MA 4,4'-DDT	6.454	7.215	716400	616039	0.568	0.271 #
18)	B Endrin al...	6.528	7.131	411649	2093219	0.313	0.916 #
19)	B Endosulfa...	6.741	7.354	482759	171528	0.324	0.068 #
20)	A Methoxychlor	6.999	7.673	376358	567490	0.490	0.430
21)	B Endrin ke...	7.233	7.816	378396	1479707	0.218	0.564 #
22)	Mirex	7.429	0.000	631519	0	0.458	N.D. #
23)	Chlordane-1	4.420f	0.000	2866557	0	56.987	N.D. #
24)	Chlordane-2	4.925f	5.575f	549276	3747400	10.526	39.277 #
25)	Chlordane-3	5.476	6.181f	2086744	7217088	14.122	19.246 #
26)	Chlordane-4	5.534	6.270	790706	3647928	6.591	8.017
27)	Chlordane-5	6.362	7.072	1018453	793979	20.466	10.032 #

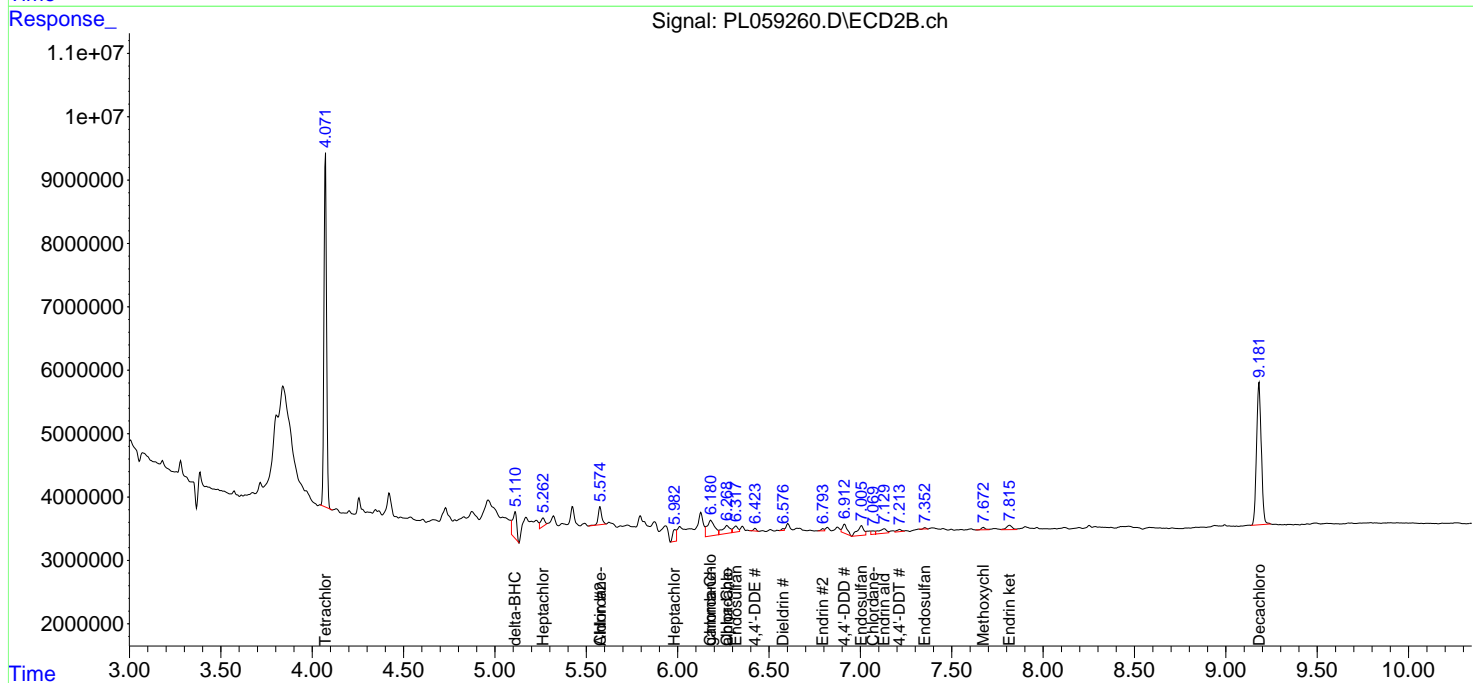
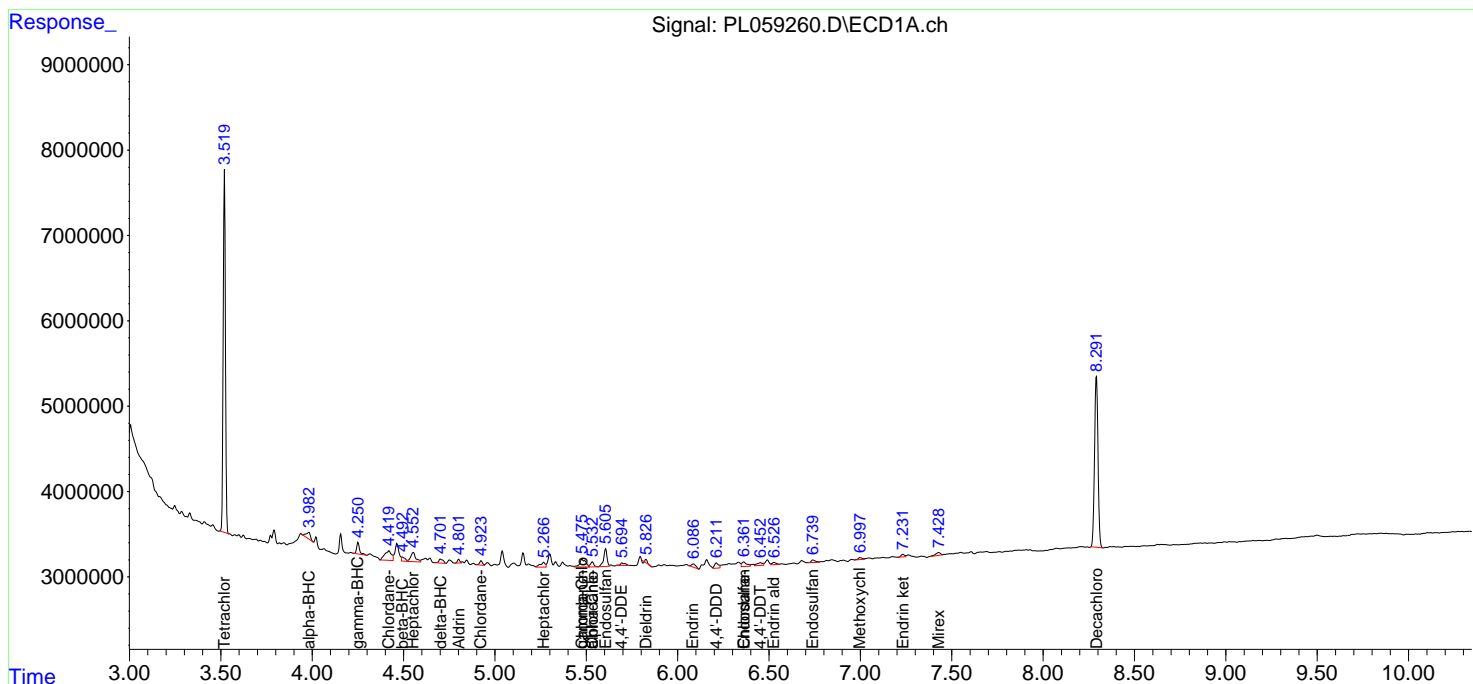
(f)=RT Delta > 1/2 Window (#)=Amounts differ by > 25% (m)=manual int.

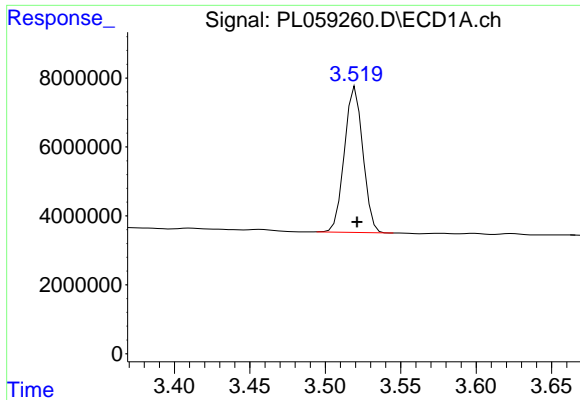
Data Path : Z:\pestpcbsrv\HPCHEM1\ECD_L\Data\PL061120\
 Data File : PL059260.D
 Signal(s) : Signal #1: ECD1A.ch Signal #2: ECD2B.ch
 Acq On : 11 Jun 2020 19:30
 Operator : AJ\MA
 Sample : L2970-03
 Misc :
 ALS Vial : 26 Sample Multiplier: 1

Instrument :
 ECD_L
 ClientSampled :

Integration File signal 1: autoint1.e
 Integration File signal 2: autoint2.e
 Quant Time: Jun 12 01:48:51 2020
 Quant Method : Z:\pestpcbsrv\HPCHEM1\ECD_L\methods\PL060320.M
 Quant Title : GC Extractables
 QLast Update : Thu Jun 04 08:16:22 2020
 Response via : Initial Calibration
 Integrator: ChemStation

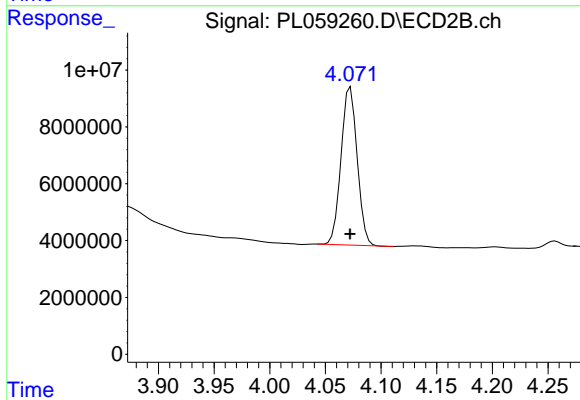
Volume Inj. : 1 µl
 Signal #1 Phase : ZB-MR2 Signal #2 Phase: ZB-MR1
 Signal #1 Info : 30M x 0.32mm x0.2 Signal #2 Info : 30M x 0.32mm x0.5µm



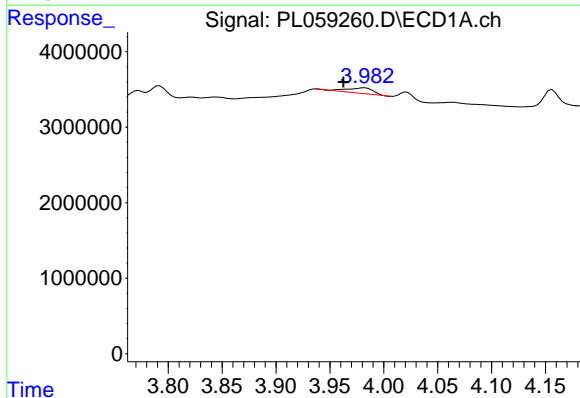


#1 Tetrachloro-m-xylene
 R.T.: 3.520 min
 Delta R.T.: 0.000 min
 Response: 36057954
 Conc: 20.88 ng/ml

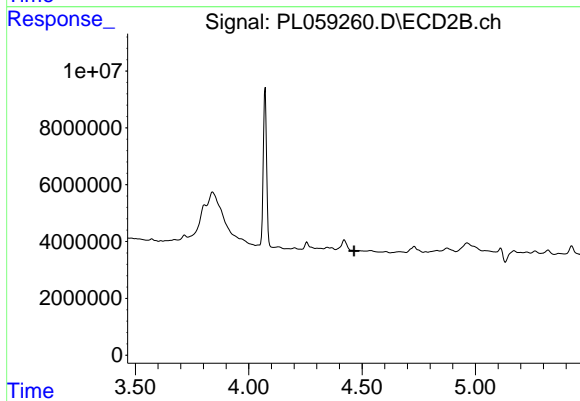
Instrument :
 ECD_L
 ClientSampled :



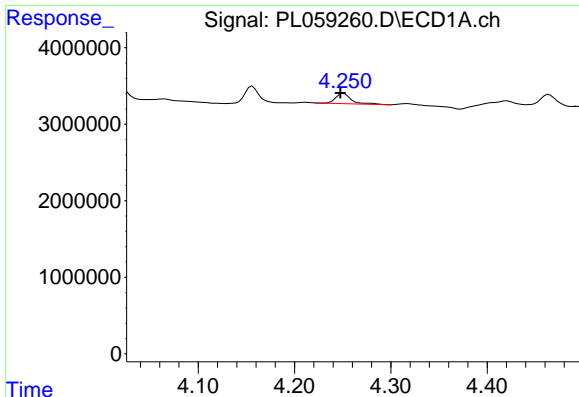
#1 Tetrachloro-m-xylene
 R.T.: 4.073 min
 Delta R.T.: 0.000 min
 Response: 55945339
 Conc: 21.50 ng/ml



#2 alpha-BHC
 R.T.: 3.983 min
 Delta R.T.: 0.020 min
 Response: 1294563
 Conc: 0.52 ng/ml

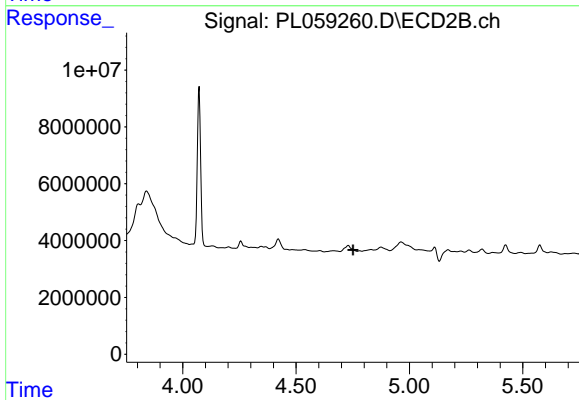


#2 alpha-BHC
 R.T.: 0.000 min
 Exp R.T. : 4.465 min
 Response: 0
 Conc: N.D.

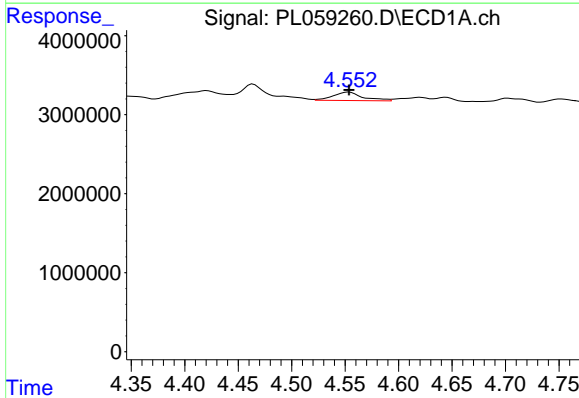


#3 gamma-BHC (Lindane)
 R.T.: 4.251 min
 Delta R.T.: 0.003 min
 Response: 1478922
 Conc: 0.67 ng/ml

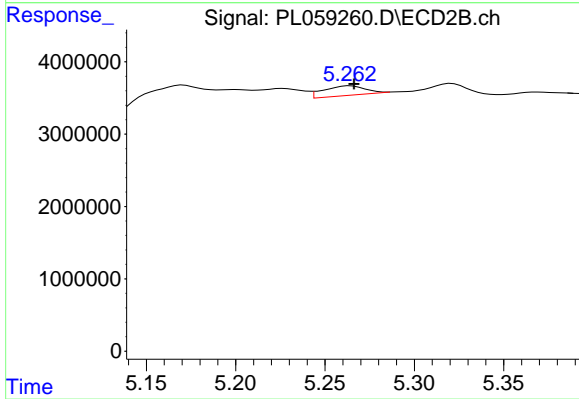
Instrument :
 ECD_L
 ClientSampled :



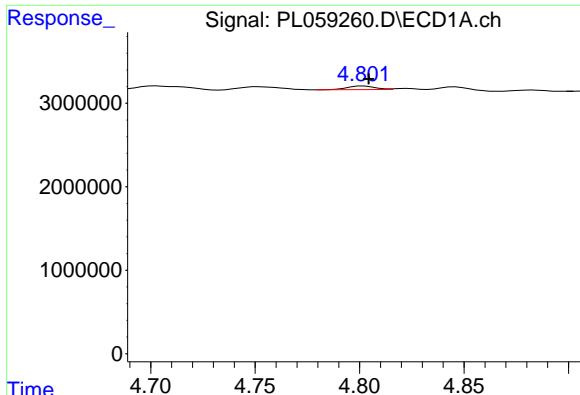
#3 gamma-BHC (Lindane)
 R.T.: 4.782 min
 Delta R.T.: 0.029 min
 Response: -171025
 Conc: N.D.



#4 Heptachlor
 R.T.: 4.554 min
 Delta R.T.: 0.000 min
 Response: 2035972
 Conc: 0.98 ng/ml

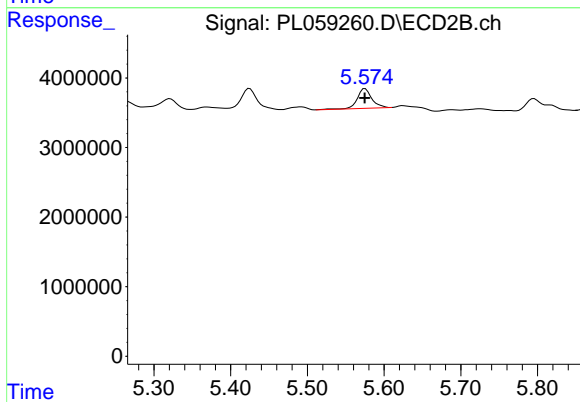


#4 Heptachlor
 R.T.: 5.264 min
 Delta R.T.: -0.002 min
 Response: 2156517
 Conc: 0.63 ng/ml

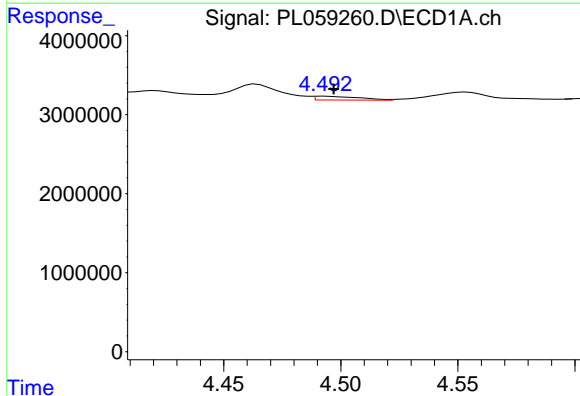


#5 Aldrin
 R.T.: 4.802 min
 Delta R.T.: -0.002 min
 Response: 412586
 Conc: 0.23 ng/ml

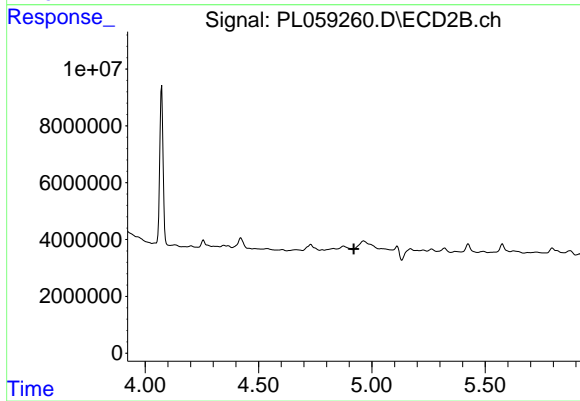
Instrument :
 ECD_L
 ClientSampleId :



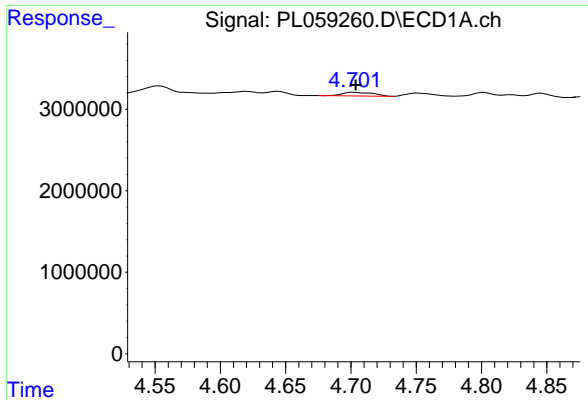
#5 Aldrin
 R.T.: 5.575 min
 Delta R.T.: 0.000 min
 Response: 3747400
 Conc: 1.19 ng/ml



#6 beta-BHC
 R.T.: 4.493 min
 Delta R.T.: -0.004 min
 Response: 637076
 Conc: 0.67 ng/ml



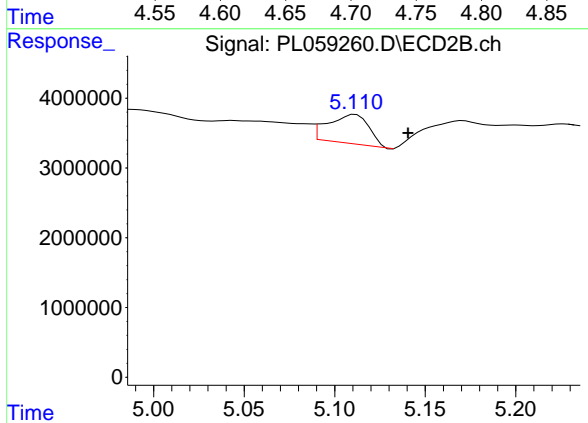
#6 beta-BHC
 R.T.: 0.000 min
 Exp R.T. : 4.920 min
 Response: 0
 Conc: N.D.



#7 delta-BHC

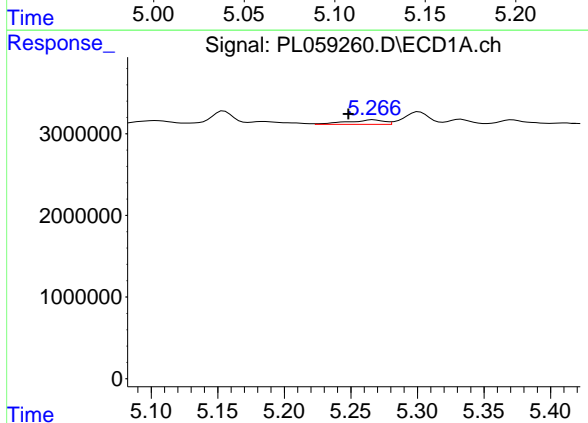
R.T.: 4.703 min
 Delta R.T.: -0.001 min
 Response: 747685
 Conc: 0.38 ng/ml

Instrument :
 ECD_L
 ClientSampled :



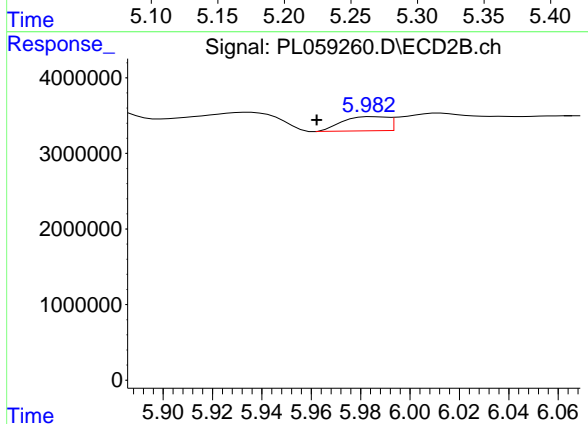
#7 delta-BHC

R.T.: 5.112 min
 Delta R.T.: -0.029 min
 Response: 6523396
 Conc: 2.33 ng/ml



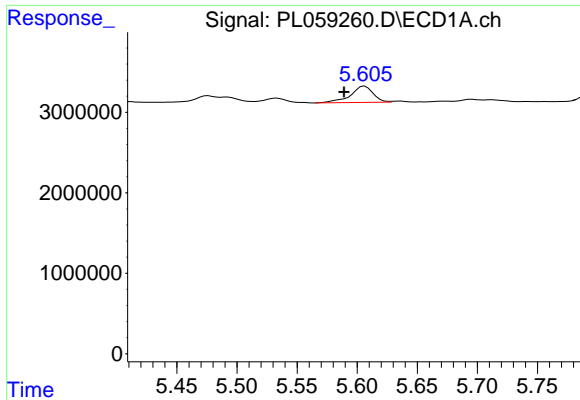
#8 Heptachlor epoxide

R.T.: 5.267 min
 Delta R.T.: 0.019 min
 Response: 1077336
 Conc: 0.63 ng/ml



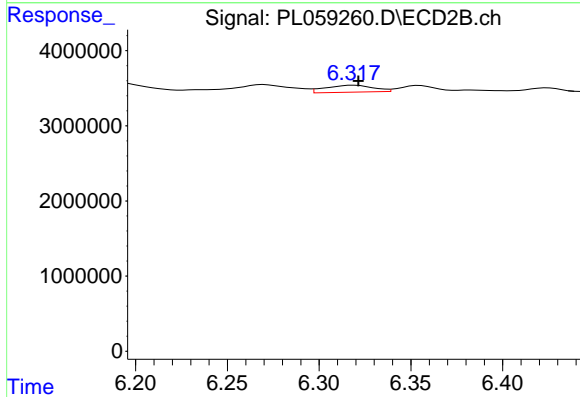
#8 Heptachlor epoxide

R.T.: 5.985 min
 Delta R.T.: 0.023 min
 Response: 2367036
 Conc: 0.85 ng/ml

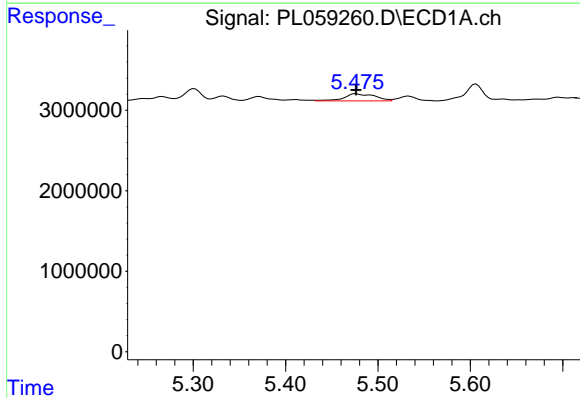


#9 Endosulfan I
 R.T.: 5.606 min
 Delta R.T.: 0.017 min
 Response: 2655342
 Conc: 1.70 ng/ml

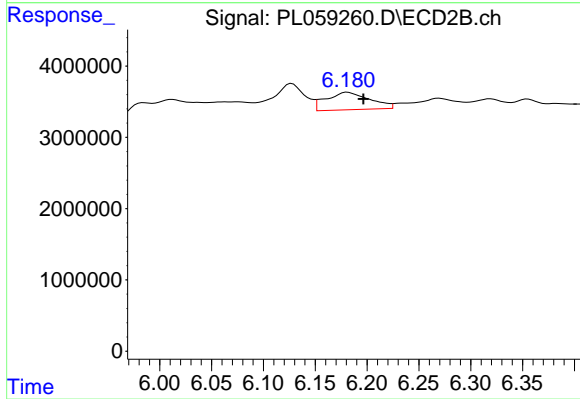
Instrument :
 ECD_L
 ClientSampleId :



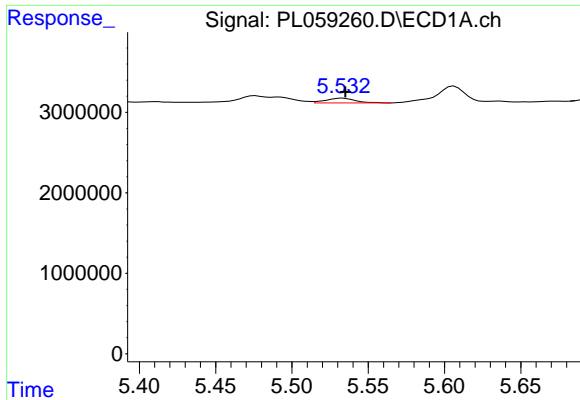
#9 Endosulfan I
 R.T.: 6.319 min
 Delta R.T.: -0.002 min
 Response: 1702193
 Conc: 0.61 ng/ml



#10 gamma-Chlordane
 R.T.: 5.476 min
 Delta R.T.: 0.000 min
 Response: 2086744
 Conc: 1.25 ng/ml

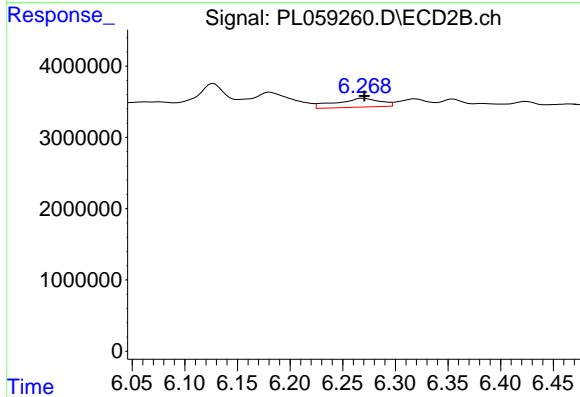


#10 gamma-Chlordane
 R.T.: 6.181 min
 Delta R.T.: -0.016 min
 Response: 7217088
 Conc: 2.41 ng/ml

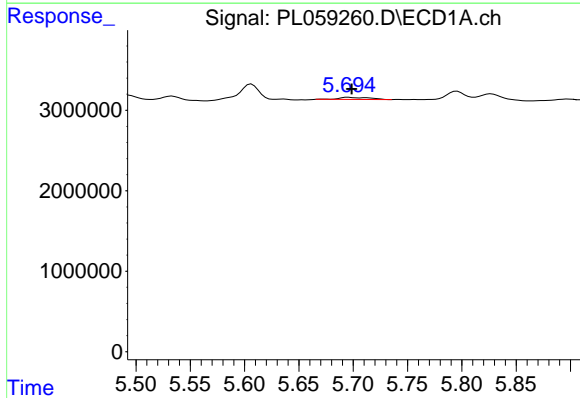


#11 alpha-Chlordane
 R.T.: 5.534 min
 Delta R.T.: -0.002 min
 Response: 790706
 Conc: 0.47 ng/ml

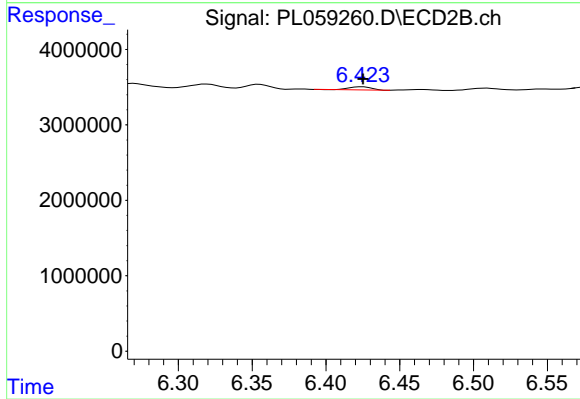
Instrument :
 ECD_L
 ClientSampleId :



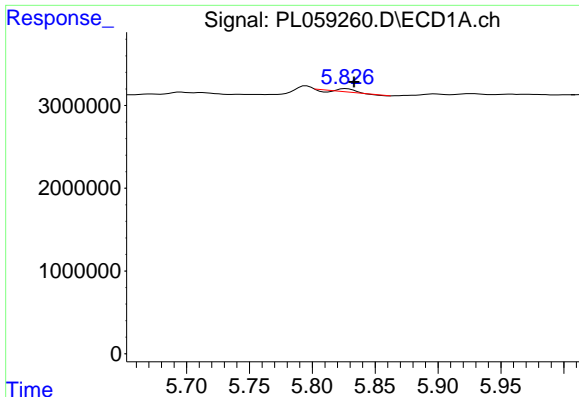
#11 alpha-Chlordane
 R.T.: 6.270 min
 Delta R.T.: 0.000 min
 Response: 3647928
 Conc: 1.20 ng/ml



#12 4,4'-DDE
 R.T.: 5.695 min
 Delta R.T.: -0.003 min
 Response: 517802
 Conc: 0.34 ng/ml



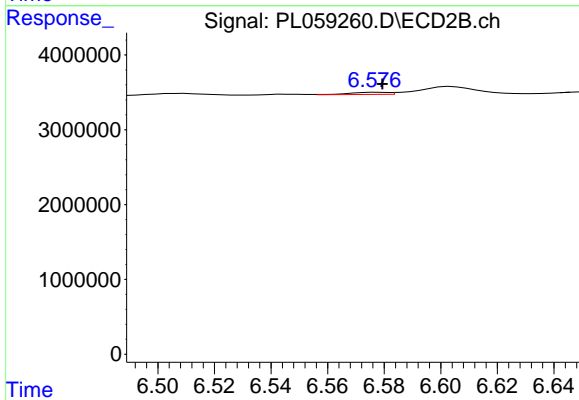
#12 4,4'-DDE
 R.T.: 6.425 min
 Delta R.T.: 0.000 min
 Response: 440026
 Conc: 0.16 ng/ml



#13 Dieldrin

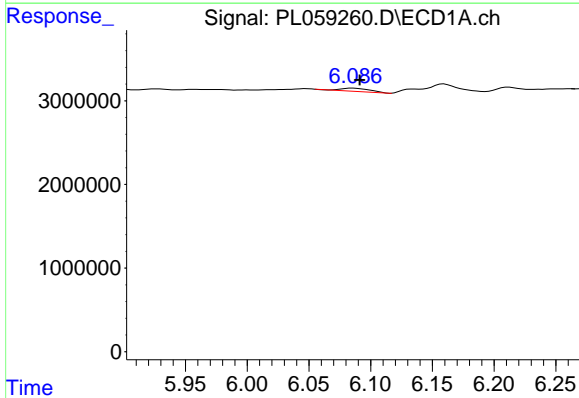
R.T.: 5.827 min
 Delta R.T.: -0.006 min
 Response: 240496
 Conc: 0.15 ng/ml

Instrument :
 ECD_L
 ClientSampleId :



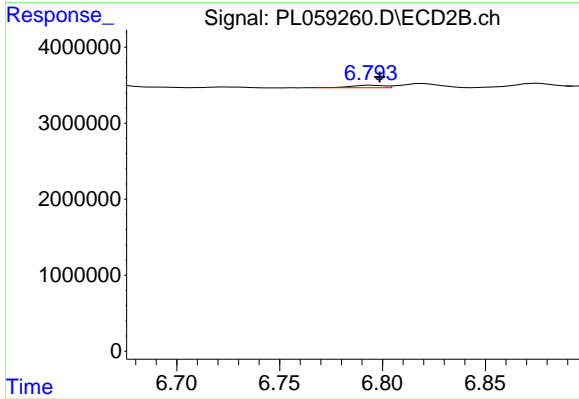
#13 Dieldrin

R.T.: 6.578 min
 Delta R.T.: -0.002 min
 Response: 277585
 Conc: 0.10 ng/ml



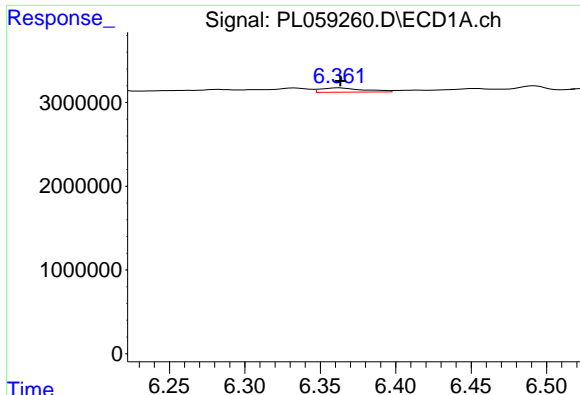
#14 Endrin

R.T.: 6.085 min
 Delta R.T.: -0.006 min
 Response: 638062
 Conc: 0.42 ng/ml



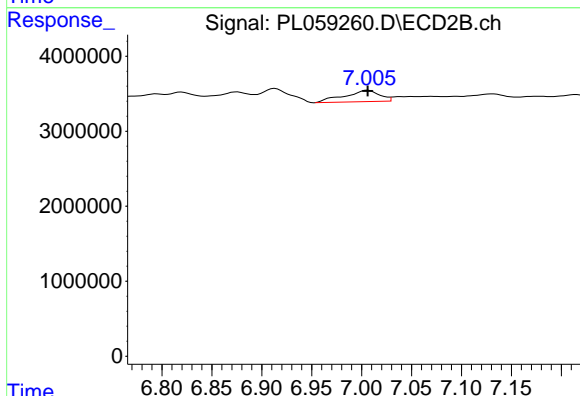
#14 Endrin

R.T.: 6.795 min
 Delta R.T.: -0.004 min
 Response: 359469
 Conc: 0.14 ng/ml

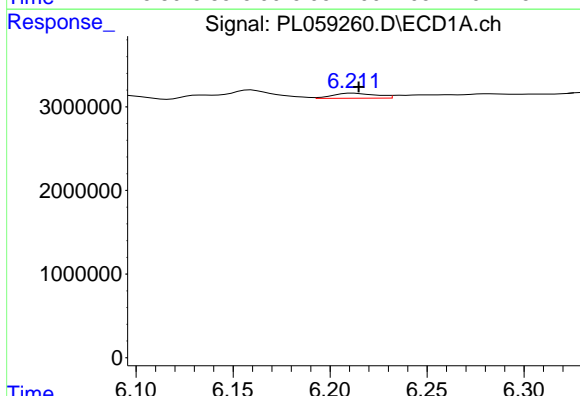


#15 Endosulfan II
 R.T.: 6.362 min
 Delta R.T.: 0.000 min
 Response: 1018453
 Conc: 0.66 ng/ml

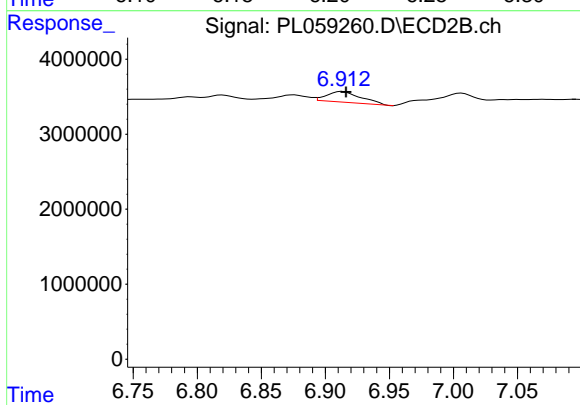
Instrument :
 ECD_L
 ClientSampleId :



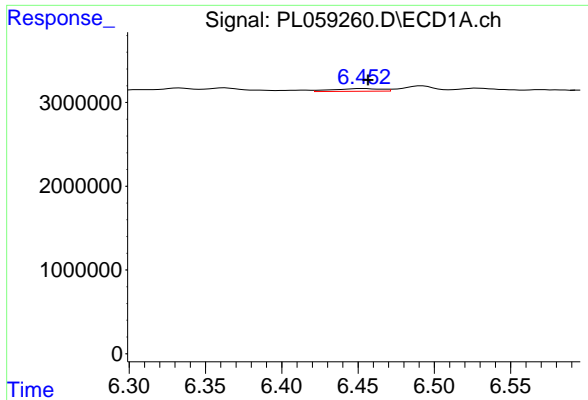
#15 Endosulfan II
 R.T.: 7.006 min
 Delta R.T.: 0.000 min
 Response: 3724548
 Conc: 1.43 ng/ml



#16 4,4'-DDD
 R.T.: 6.212 min
 Delta R.T.: -0.002 min
 Response: 924889
 Conc: 0.70 ng/ml

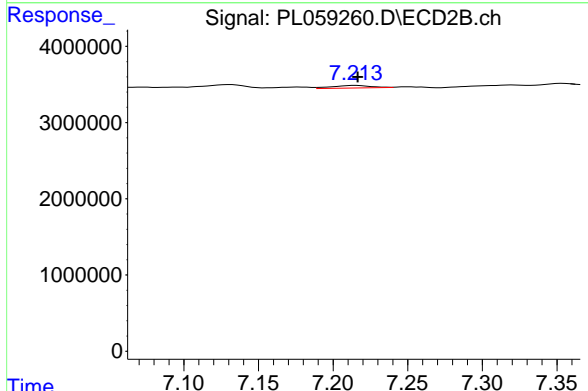


#16 4,4'-DDD
 R.T.: 6.913 min
 Delta R.T.: -0.003 min
 Response: 2655373
 Conc: 1.14 ng/ml

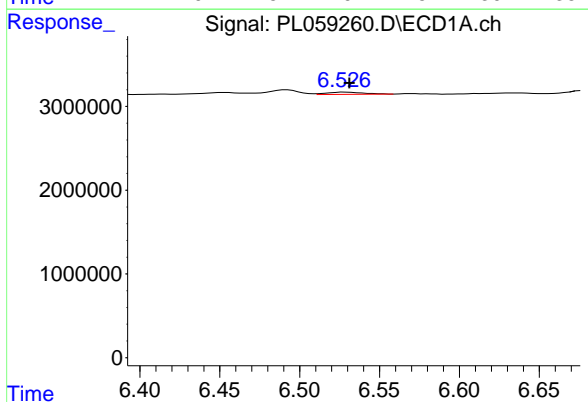


#17 4,4'-DDT
 R.T.: 6.454 min
 Delta R.T.: -0.003 min
 Response: 716400
 Conc: 0.57 ng/ml

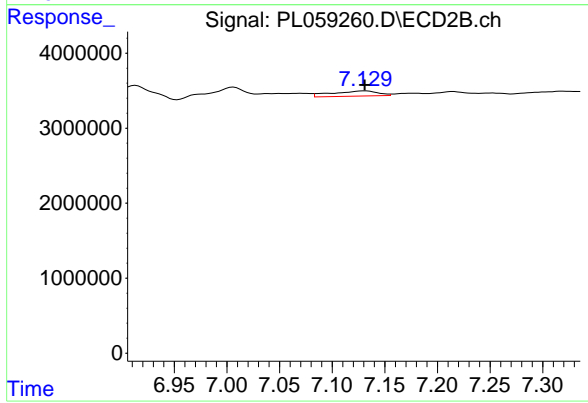
Instrument :
 ECD_L
 ClientSampleId :



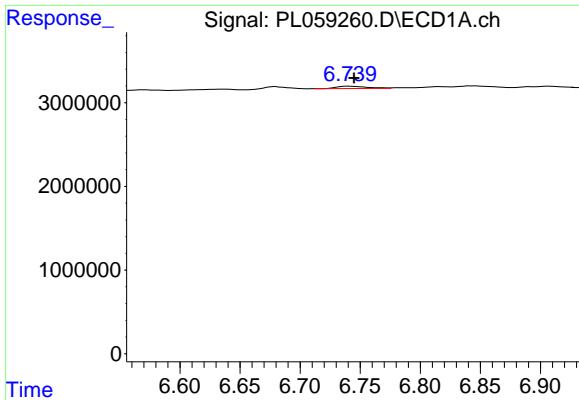
#17 4,4'-DDT
 R.T.: 7.215 min
 Delta R.T.: -0.002 min
 Response: 616039
 Conc: 0.27 ng/ml



#18 Endrin aldehyde
 R.T.: 6.528 min
 Delta R.T.: -0.003 min
 Response: 411649
 Conc: 0.31 ng/ml

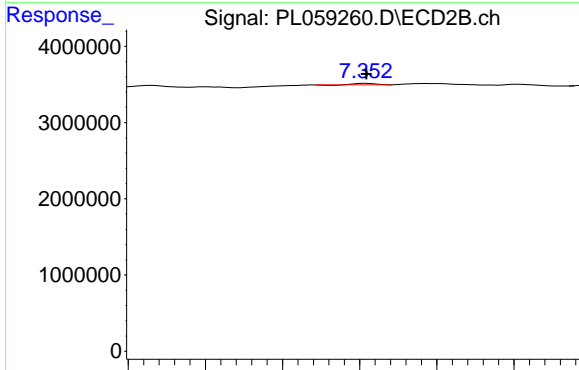


#18 Endrin aldehyde
 R.T.: 7.131 min
 Delta R.T.: 0.000 min
 Response: 2093219
 Conc: 0.92 ng/ml

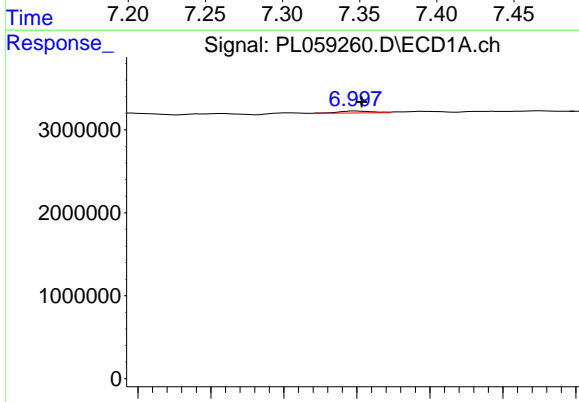


#19 Endosulfan Sulfate
 R.T.: 6.741 min
 Delta R.T.: -0.004 min
 Response: 482759
 Conc: 0.32 ng/ml

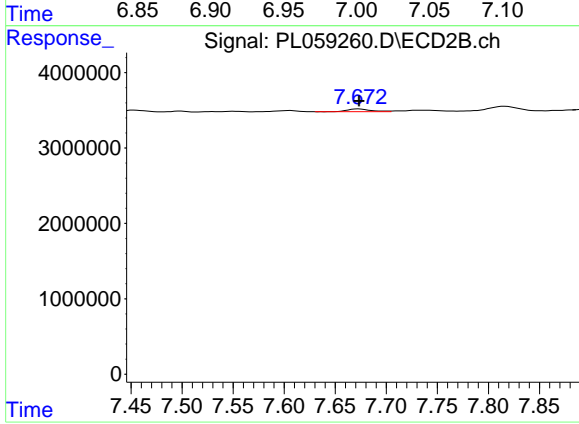
Instrument :
 ECD_L
 ClientSampleId :



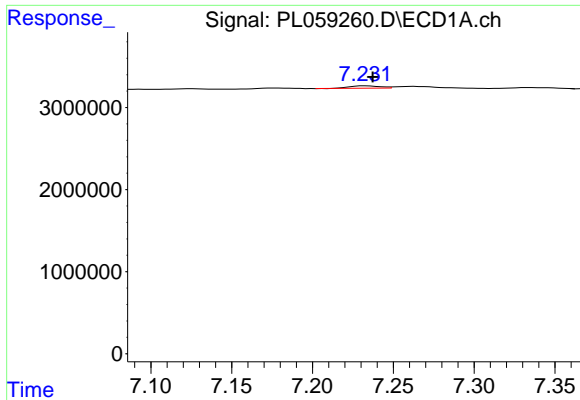
#19 Endosulfan Sulfate
 R.T.: 7.354 min
 Delta R.T.: 0.000 min
 Response: 171528
 Conc: 0.07 ng/ml



#20 Methoxychlor
 R.T.: 6.999 min
 Delta R.T.: -0.004 min
 Response: 376358
 Conc: 0.49 ng/ml

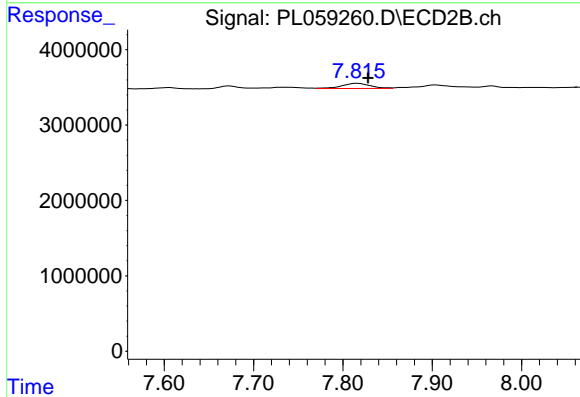


#20 Methoxychlor
 R.T.: 7.673 min
 Delta R.T.: 0.000 min
 Response: 567490
 Conc: 0.43 ng/ml

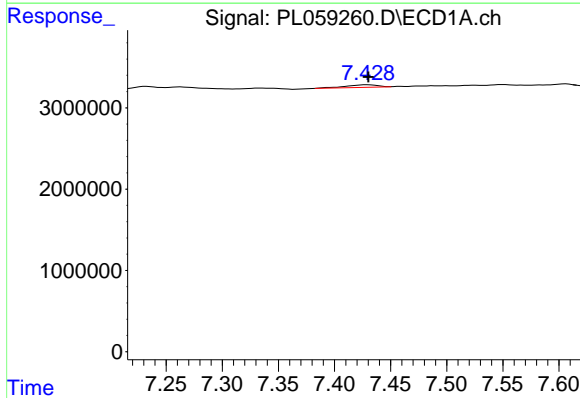


#21 Endrin ketone
 R.T.: 7.233 min
 Delta R.T.: -0.005 min
 Response: 378396
 Conc: 0.22 ng/ml

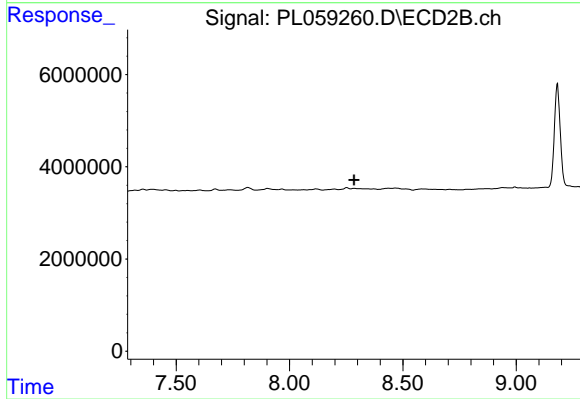
Instrument :
 ECD_L
 ClientSampleId :



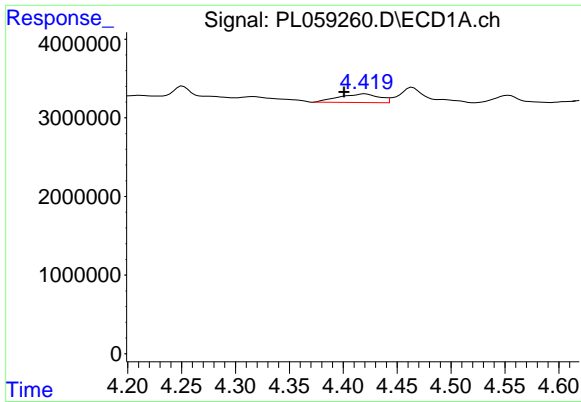
#21 Endrin ketone
 R.T.: 7.816 min
 Delta R.T.: -0.012 min
 Response: 1479707
 Conc: 0.56 ng/ml



#22 Mirex
 R.T.: 7.429 min
 Delta R.T.: -0.001 min
 Response: 631519
 Conc: 0.46 ng/ml

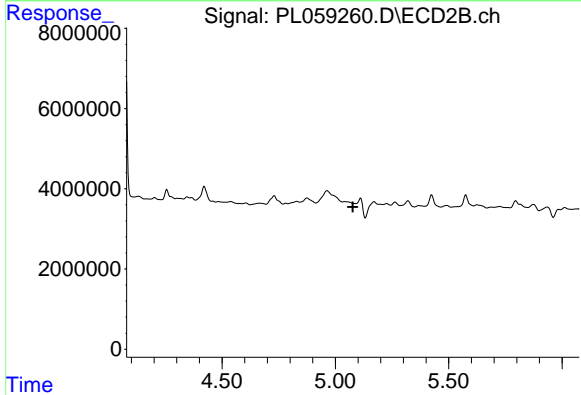


#22 Mirex
 R.T.: 0.000 min
 Exp R.T. : 8.285 min
 Response: 0
 Conc: N.D.

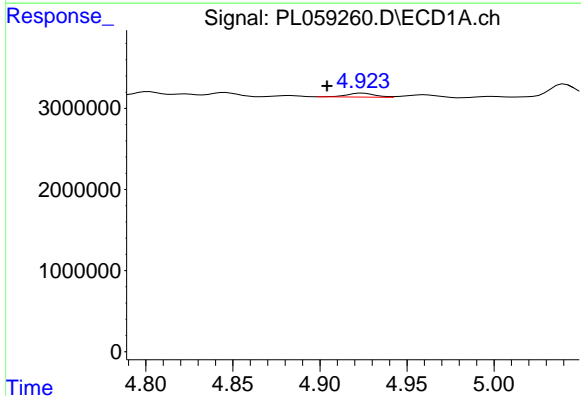


#23 Chlordane-1
 R.T.: 4.420 min
 Delta R.T.: 0.020 min
 Response: 2866557
 Conc: 56.99 ng/ml

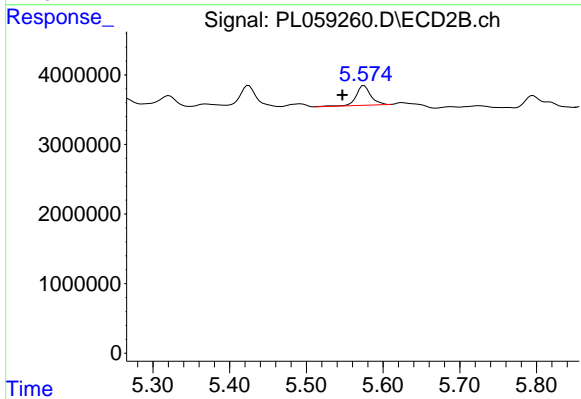
Instrument :
 ECD_L
 ClientSampled :



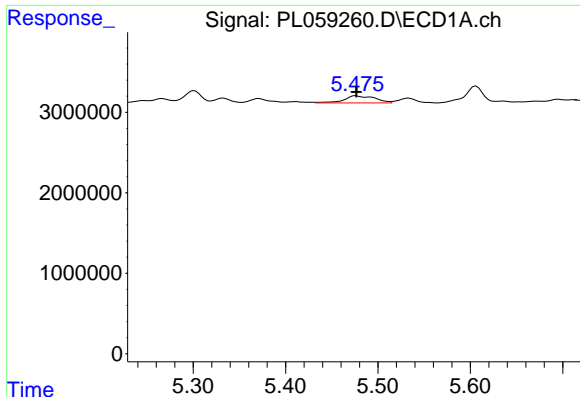
#23 Chlordane-1
 R.T.: 0.000 min
 Exp R.T. : 5.077 min
 Response: 0
 Conc: N.D.



#24 Chlordane-2
 R.T.: 4.925 min
 Delta R.T.: 0.021 min
 Response: 549276
 Conc: 10.53 ng/ml



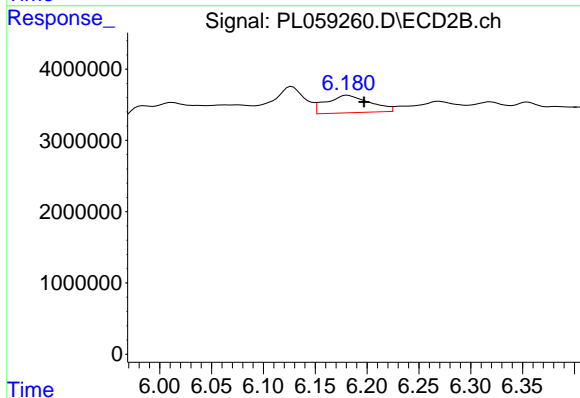
#24 Chlordane-2
 R.T.: 5.575 min
 Delta R.T.: 0.028 min
 Response: 3747400
 Conc: 39.28 ng/ml



#25 Chlordane-3

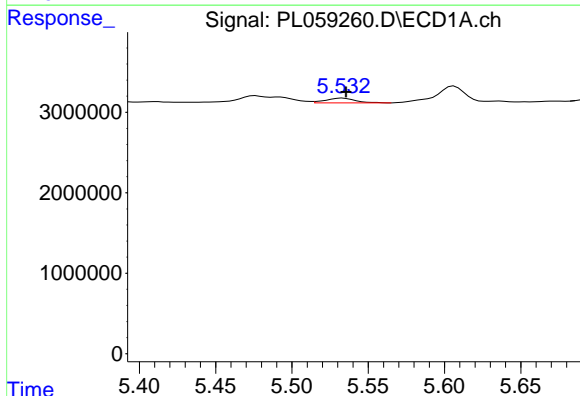
R.T.: 5.476 min
 Delta R.T.: 0.000 min
 Response: 2086744
 Conc: 14.12 ng/ml

Instrument :
 ECD_L
 ClientSampled :



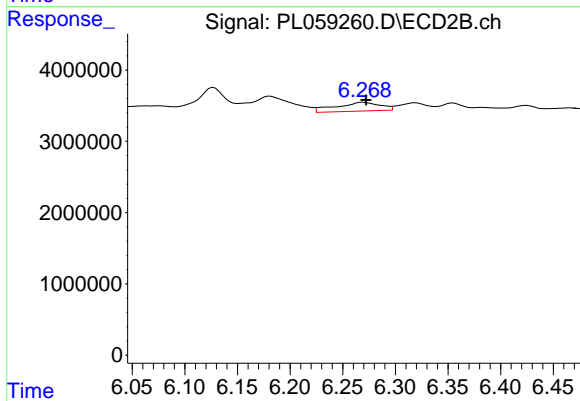
#25 Chlordane-3

R.T.: 6.181 min
 Delta R.T.: -0.016 min
 Response: 7217088
 Conc: 19.25 ng/ml



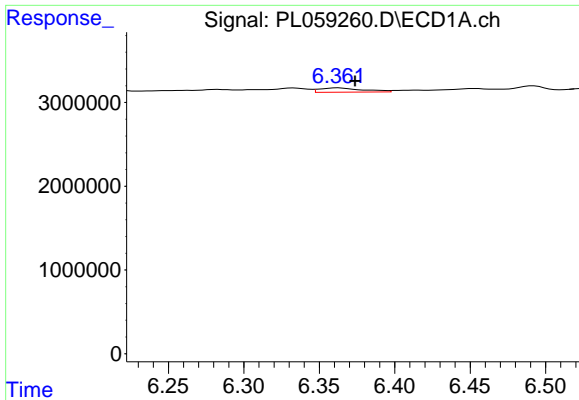
#26 Chlordane-4

R.T.: 5.534 min
 Delta R.T.: -0.002 min
 Response: 790706
 Conc: 6.59 ng/ml



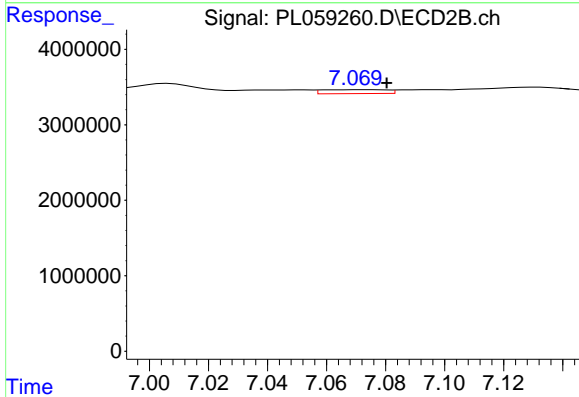
#26 Chlordane-4

R.T.: 6.270 min
 Delta R.T.: -0.002 min
 Response: 3647928
 Conc: 8.02 ng/ml

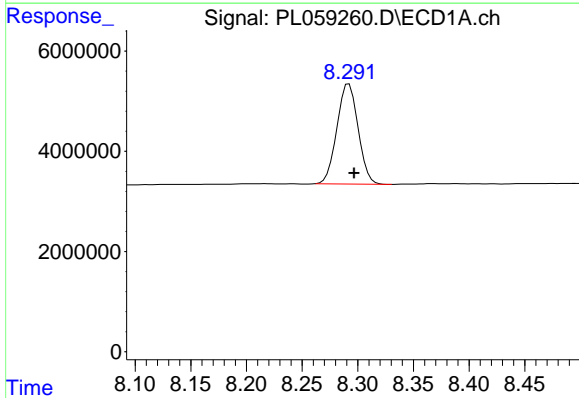


#27 Chlordane-5
 R.T.: 6.362 min
 Delta R.T.: -0.011 min
 Response: 1018453
 Conc: 20.47 ng/ml

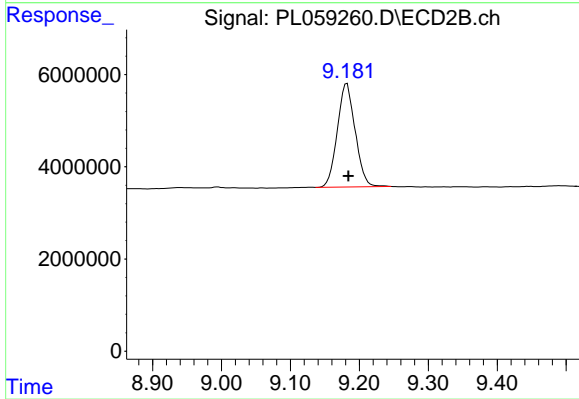
Instrument :
 ECD_L
 ClientSampleId :



#27 Chlordane-5
 R.T.: 7.072 min
 Delta R.T.: -0.009 min
 Response: 793979
 Conc: 10.03 ng/ml



#28 Decachlorobiphenyl
 R.T.: 8.292 min
 Delta R.T.: -0.004 min
 Response: 26483206
 Conc: 16.11 ng/ml



#28 Decachlorobiphenyl
 R.T.: 9.182 min
 Delta R.T.: -0.002 min
 Response: 40416134
 Conc: 17.05 ng/ml