

Data Path : Z:\pestpcbsrv\HPCHEM1\ECD\_L\Data\PL061221\  
 Data File : PL067320.D  
 Signal(s) : Signal #1: ECD1A.ch Signal #2: ECD2B.ch  
 Acq On : 12 Jun 2021 11:39  
 Operator : AR\AJ  
 Sample : PSTDCCC050  
 Misc :  
 ALS Vial : 4 Sample Multiplier: 1

Instrument :  
 ECD\_L  
 ClientSampled :

Integration File signal 1: autoint1.e  
 Integration File signal 2: autoint2.e  
 Quant Time: Jun 14 08:53:11 2021  
 Quant Method : Z:\pestpcbsrv\HPCHEM1\ECD\_L\methods\PL061021.M  
 Quant Title : GC Extractables  
 QLast Update : Fri Jun 11 02:00:12 2021  
 Response via : Initial Calibration  
 Integrator: ChemStation

Volume Inj. : 1 µl  
 Signal #1 Phase : ZB-MR2 Signal #2 Phase: ZB-MR1  
 Signal #1 Info : 30M x 0.32mm x0.2 Signal #2 Info : 30M x 0.32mm x0.5µm

	Compound	RT#1	RT#2	Resp#1	Resp#2	ng/ml	ng/ml
-----							
System Monitoring Compounds							
1)	SA Tetrachlo...	4.480	5.530	27591617	46426878	50.186	49.247
28)	SA Decachlor...	10.222	11.428	34650713	49501098	48.894	49.697
Target Compounds							
2)	A alpha-BHC	5.180	6.111	39466328	62261858	53.659	50.354
3)	MA gamma-BHC...	5.599	6.506	37638187	58913182	50.223	49.970
4)	MA Heptachlor	6.011	7.154	38893765	55044439	51.563	49.357
5)	MB Aldrin	6.332	7.523	37298311	54547992	50.691	50.398
6)	B beta-BHC	5.982	6.761	17536423	27087718	49.011	49.884
7)	B delta-BHC	6.239	7.026	37421430	53332489	50.667	45.370
8)	B Heptachlo...	6.905	7.990	34758704	47087268	49.679	47.004
9)	A Endosulfan I	7.304	8.394	33035028	43517680	49.140	47.658
10)	B gamma-Chl...	7.184	8.259	35730840	47238582	49.283	46.787
11)	B alpha-Chl...	7.252	8.340	35915612	47371559	49.057	46.920
12)	B 4,4'-DDE	7.470	8.528	33094041	43650375	49.742	48.183
13)	MA Dieldrin	7.589	8.683	34642181	44247186	49.418	48.718
14)	MA Endrin	7.876	8.922	32524964	37737893	49.607	49.337
15)	B Endosulfa...	8.187	9.156	30368149	39214154	49.309	49.184
16)	A 4,4'-DDD	8.052	9.068	28279017	35550113	48.650	49.986
17)	MA 4,4'-DDT	8.311	9.384	28668908	37473154	49.269	51.112
18)	B Endrin al...	8.374	9.291	24158776	31241765	47.719	48.920
19)	B Endosulfa...	8.605	9.528	30558963	38635260	48.139	48.648
20)	A Methoxychlor	8.905	9.871	17787214	21074663	50.039	54.204
21)	B Endrin ke...	9.115	10.025	37201176	45124990	48.862	49.786
22)	Mirex	9.302	10.491	29730958	36394738	47.209	48.141
24)	Chlordane-2	6.488	7.523f	458365	54547992	17.117	1496.673 #
25)	Chlordane-3	7.184	8.259	35730840	47238582	531.783	352.954 #
26)	Chlordane-4	7.252	8.340	35915612	47371559	491.465	292.236 #
27)	Chlordane-5	8.187	0.000	30368149	0	1387.999	N.D. #

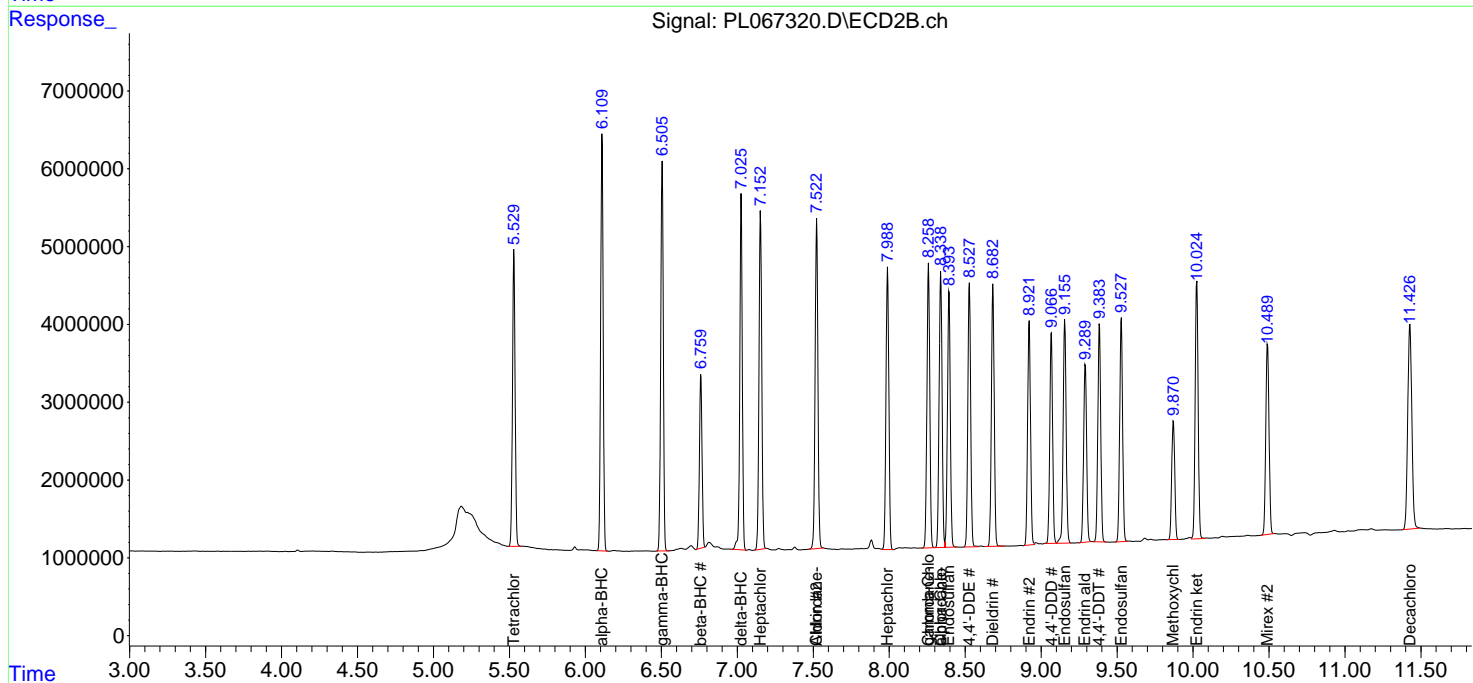
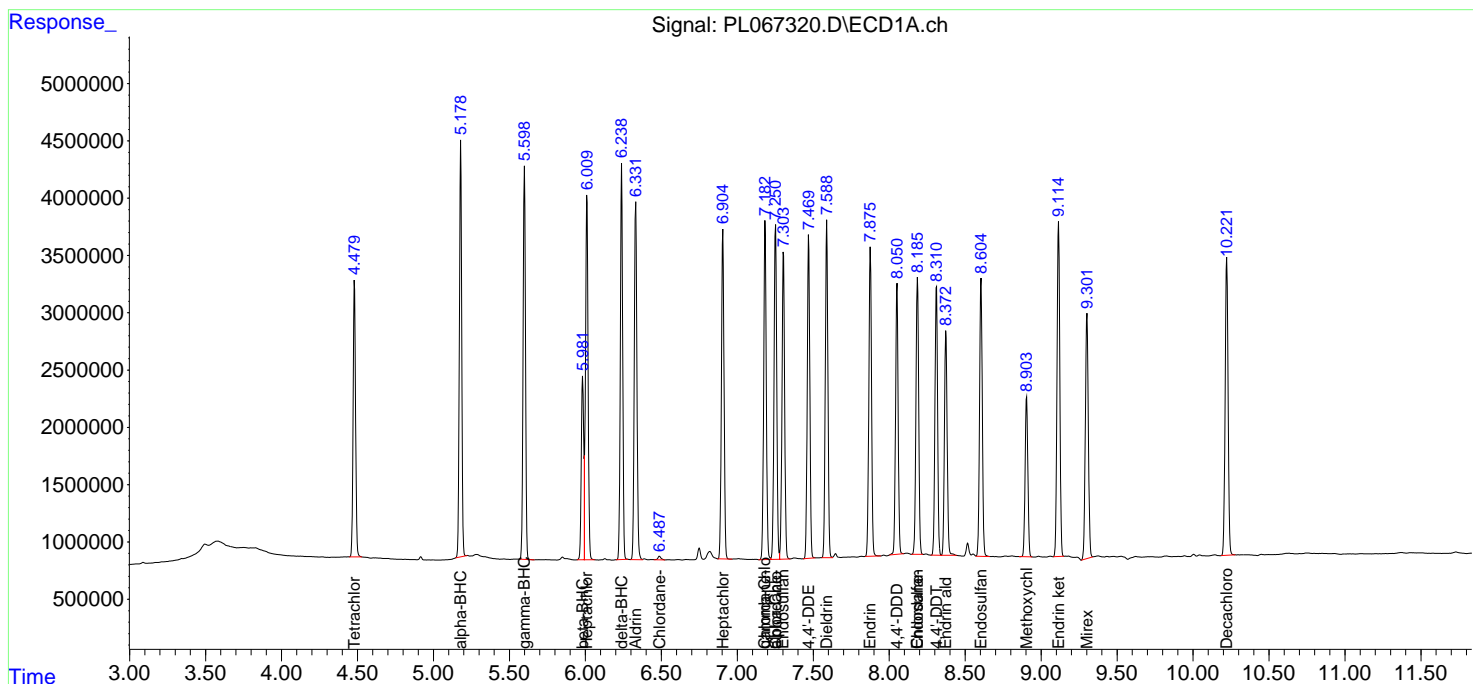
(f)=RT Delta > 1/2 Window (#)=Amounts differ by > 25% (m)=manual int.

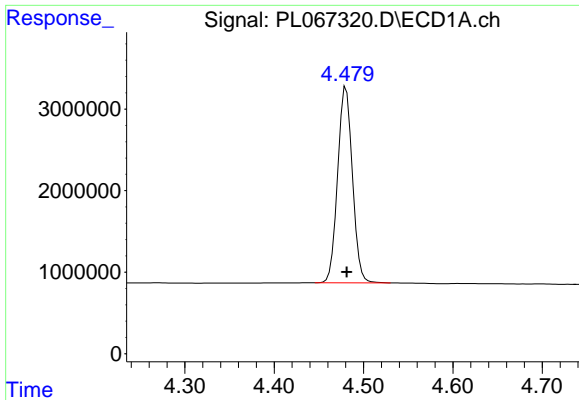
Data Path : Z:\pestpcbsrv\HPCHEM1\ECD\_L\Data\PL061221\  
 Data File : PL067320.D  
 Signal(s) : Signal #1: ECD1A.ch Signal #2: ECD2B.ch  
 Acq On : 12 Jun 2021 11:39  
 Operator : AR\AJ  
 Sample : PSTDCCC050  
 Misc :  
 ALS Vial : 4 Sample Multiplier: 1

Instrument :  
 ECD\_L  
 ClientSampled :

Integration File signal 1: autoint1.e  
 Integration File signal 2: autoint2.e  
 Quant Time: Jun 14 08:53:11 2021  
 Quant Method : Z:\pestpcbsrv\HPCHEM1\ECD\_L\methods\PL061021.M  
 Quant Title : GC Extractables  
 QLast Update : Fri Jun 11 02:00:12 2021  
 Response via : Initial Calibration  
 Integrator: ChemStation

Volume Inj. : 1 µl  
 Signal #1 Phase : ZB-MR2 Signal #2 Phase: ZB-MR1  
 Signal #1 Info : 30M x 0.32mm x0.2 Signal #2 Info : 30M x 0.32mm x0.5µm

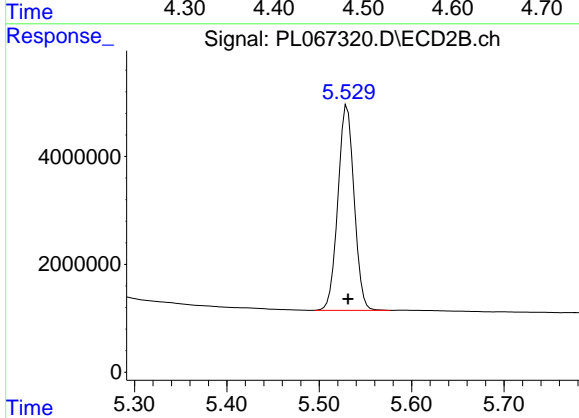




#1 Tetrachloro-m-xylene

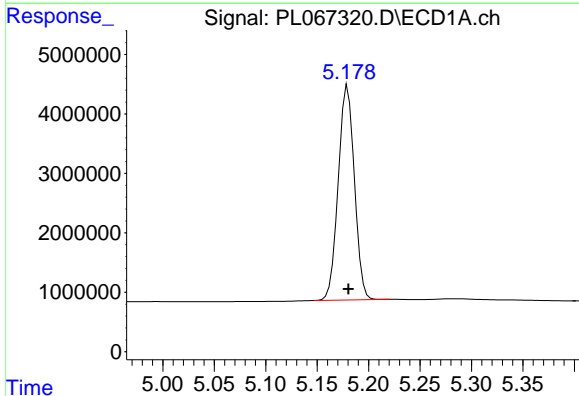
R.T.: 4.480 min  
 Delta R.T.: 0.000 min  
 Response: 27591617  
 Conc: 50.19 ng/ml

Instrument :  
 ECD\_L  
 ClientSampled :



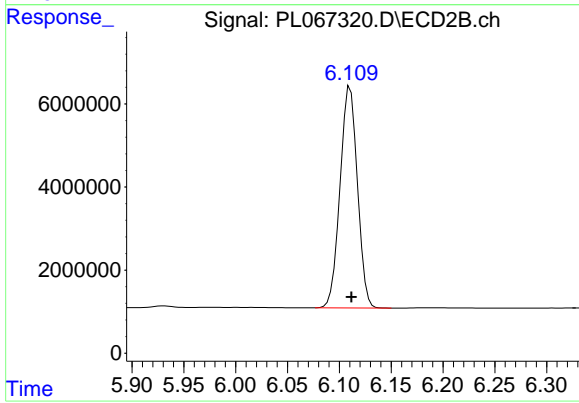
#1 Tetrachloro-m-xylene

R.T.: 5.530 min  
 Delta R.T.: 0.000 min  
 Response: 46426878  
 Conc: 49.25 ng/ml



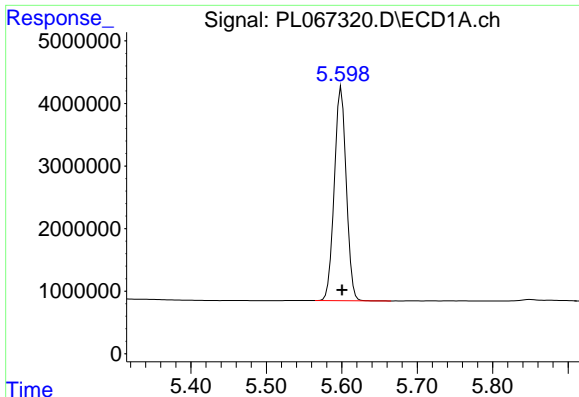
#2 alpha-BHC

R.T.: 5.180 min  
 Delta R.T.: 0.000 min  
 Response: 39466328  
 Conc: 53.66 ng/ml



#2 alpha-BHC

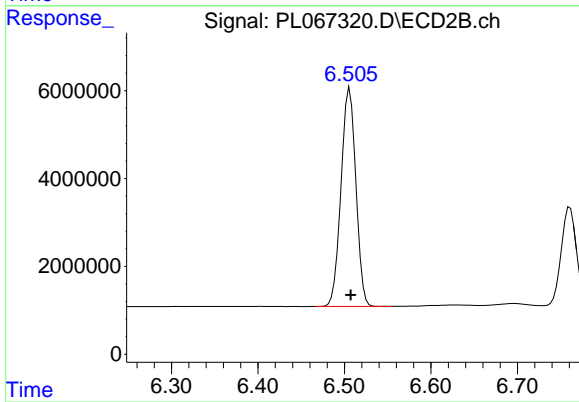
R.T.: 6.111 min  
 Delta R.T.: -0.001 min  
 Response: 62261858  
 Conc: 50.35 ng/ml



#3 gamma-BHC (Lindane)

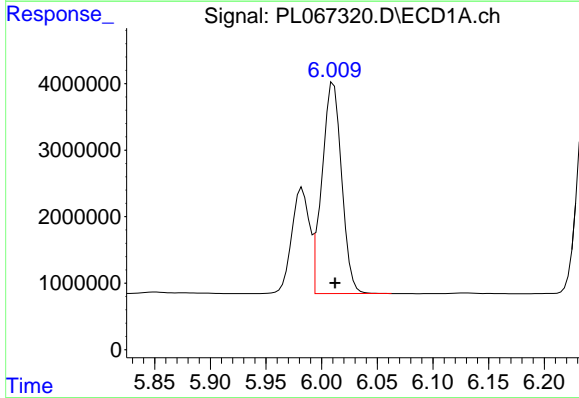
R.T.: 5.599 min  
Delta R.T.: 0.000 min  
Response: 37638187  
Conc: 50.22 ng/ml

Instrument :  
ECD\_L  
ClientSampled :



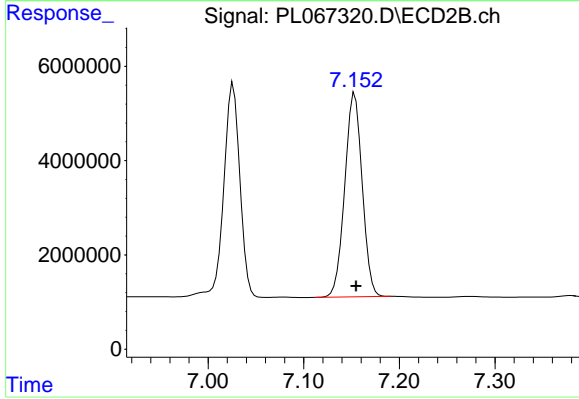
#3 gamma-BHC (Lindane)

R.T.: 6.506 min  
Delta R.T.: -0.001 min  
Response: 58913182  
Conc: 49.97 ng/ml



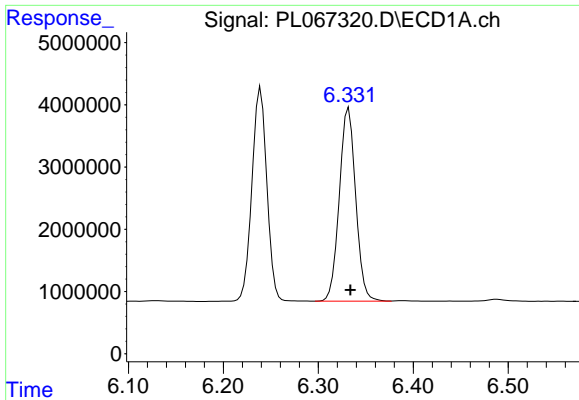
#4 Heptachlor

R.T.: 6.011 min  
Delta R.T.: -0.001 min  
Response: 38893765  
Conc: 51.56 ng/ml



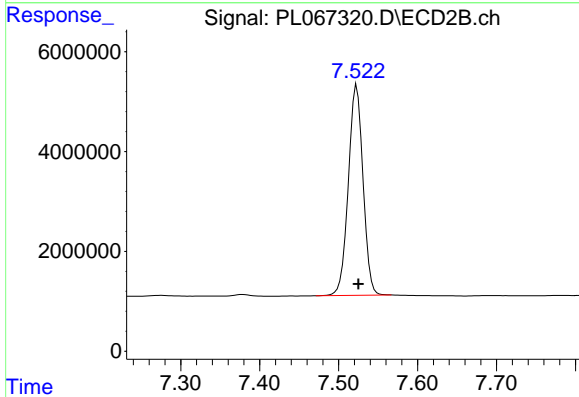
#4 Heptachlor

R.T.: 7.154 min  
Delta R.T.: -0.001 min  
Response: 55044439  
Conc: 49.36 ng/ml

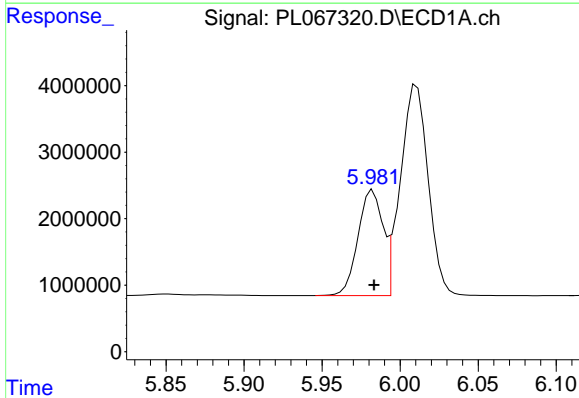


#5 Aldrin  
 R.T.: 6.332 min  
 Delta R.T.: -0.002 min  
 Response: 37298311  
 Conc: 50.69 ng/ml

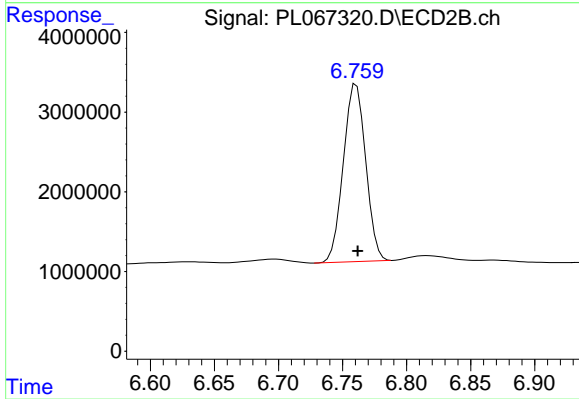
Instrument :  
 ECD\_L  
 ClientSampled :



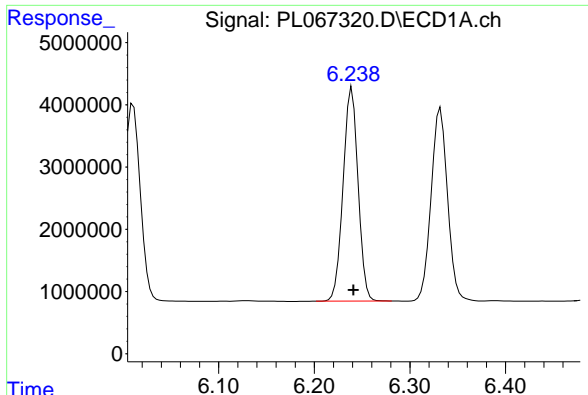
#5 Aldrin  
 R.T.: 7.523 min  
 Delta R.T.: -0.002 min  
 Response: 54547992  
 Conc: 50.40 ng/ml



#6 beta-BHC  
 R.T.: 5.982 min  
 Delta R.T.: 0.000 min  
 Response: 17536423  
 Conc: 49.01 ng/ml

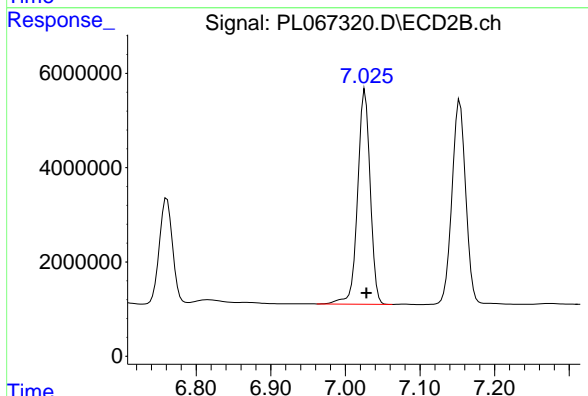


#6 beta-BHC  
 R.T.: 6.761 min  
 Delta R.T.: -0.001 min  
 Response: 27087718  
 Conc: 49.88 ng/ml

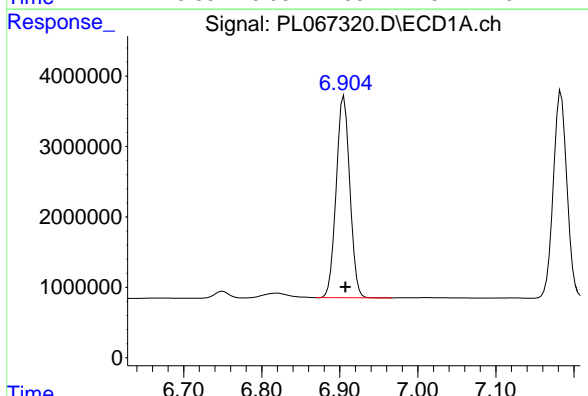


#7 delta-BHC  
 R.T.: 6.239 min  
 Delta R.T.: -0.001 min  
 Response: 37421430  
 Conc: 50.67 ng/ml

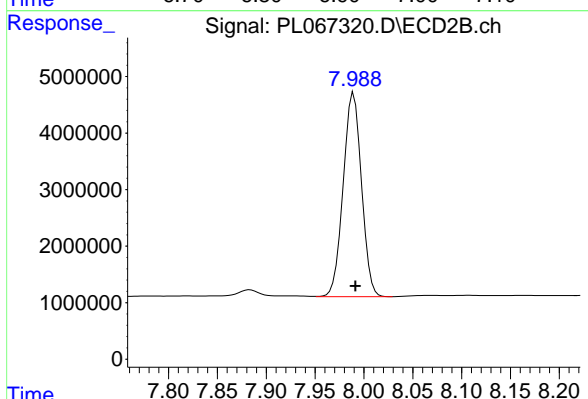
Instrument :  
 ECD\_L  
 ClientSampled :



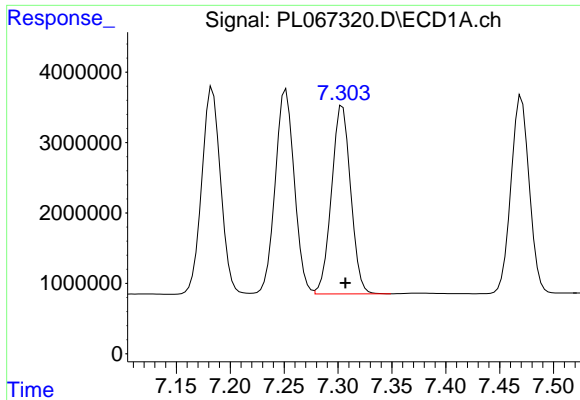
#7 delta-BHC  
 R.T.: 7.026 min  
 Delta R.T.: -0.002 min  
 Response: 53332489  
 Conc: 45.37 ng/ml



#8 Heptachlor epoxide  
 R.T.: 6.905 min  
 Delta R.T.: -0.002 min  
 Response: 34758704  
 Conc: 49.68 ng/ml

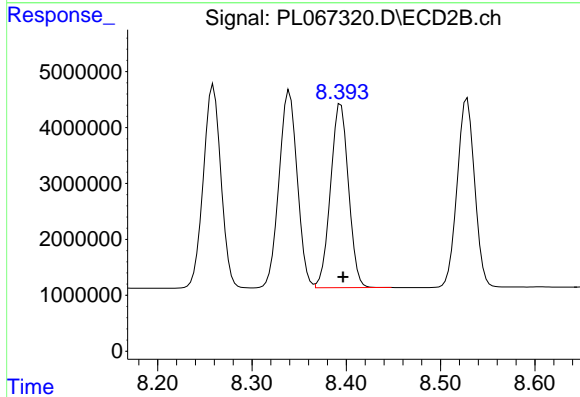


#8 Heptachlor epoxide  
 R.T.: 7.990 min  
 Delta R.T.: -0.002 min  
 Response: 47087268  
 Conc: 47.00 ng/ml

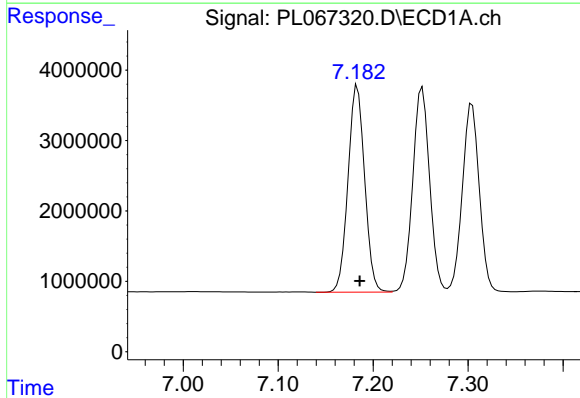


#9 Endosulfan I  
 R.T.: 7.304 min  
 Delta R.T.: -0.003 min  
 Response: 33035028  
 Conc: 49.14 ng/ml

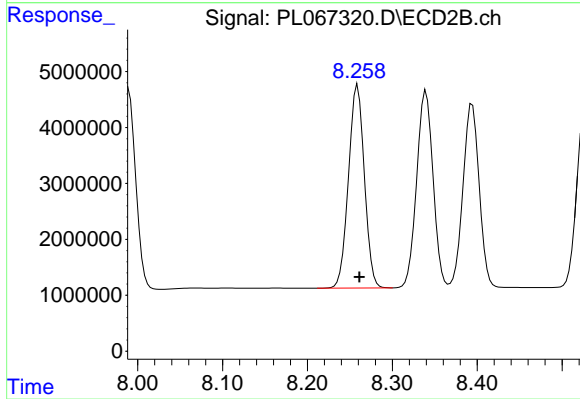
Instrument :  
 ECD\_L  
 ClientSampled :



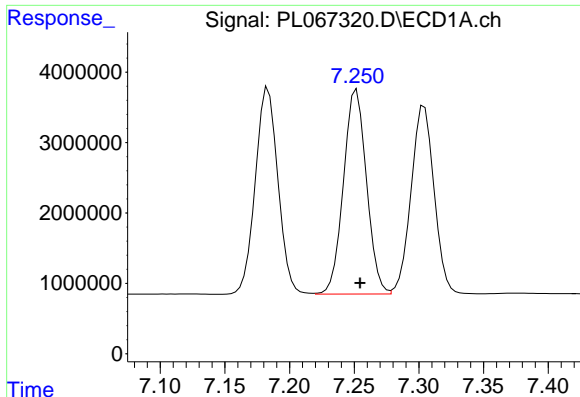
#9 Endosulfan I  
 R.T.: 8.394 min  
 Delta R.T.: -0.002 min  
 Response: 43517680  
 Conc: 47.66 ng/ml



#10 gamma-Chlordane  
 R.T.: 7.184 min  
 Delta R.T.: -0.002 min  
 Response: 35730840  
 Conc: 49.28 ng/ml



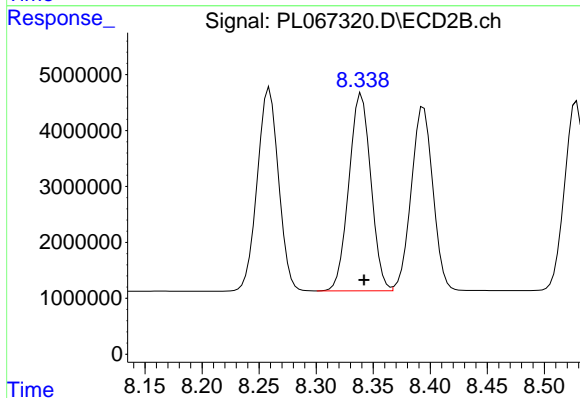
#10 gamma-Chlordane  
 R.T.: 8.259 min  
 Delta R.T.: -0.002 min  
 Response: 47238582  
 Conc: 46.79 ng/ml



#11 alpha-Chlordane

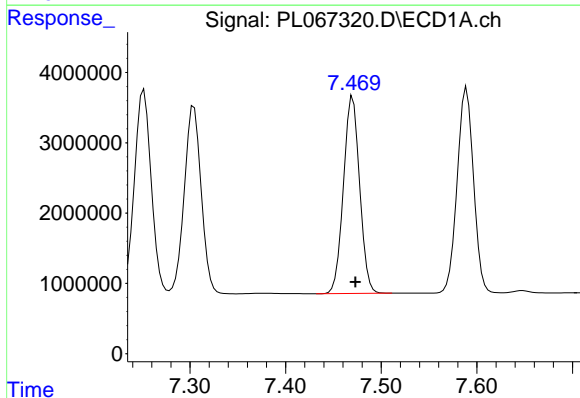
R.T.: 7.252 min  
 Delta R.T.: -0.003 min  
 Response: 35915612  
 Conc: 49.06 ng/ml

Instrument :  
 ECD\_L  
 ClientSampled :



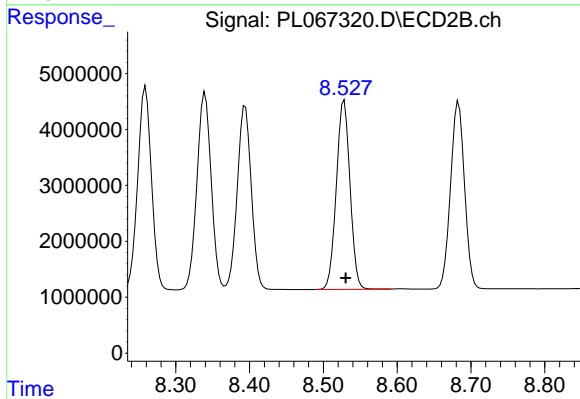
#11 alpha-Chlordane

R.T.: 8.340 min  
 Delta R.T.: -0.002 min  
 Response: 47371559  
 Conc: 46.92 ng/ml



#12 4,4'-DDE

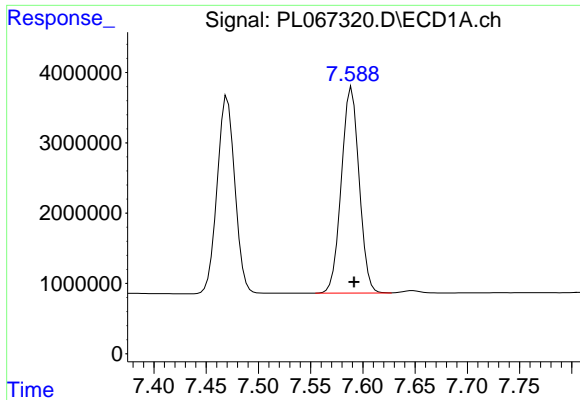
R.T.: 7.470 min  
 Delta R.T.: -0.003 min  
 Response: 33094041  
 Conc: 49.74 ng/ml



#12 4,4'-DDE

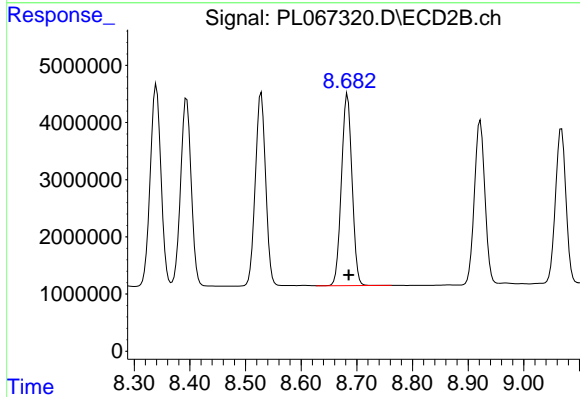
R.T.: 8.528 min  
 Delta R.T.: -0.002 min  
 Response: 43650375  
 Conc: 48.18 ng/ml



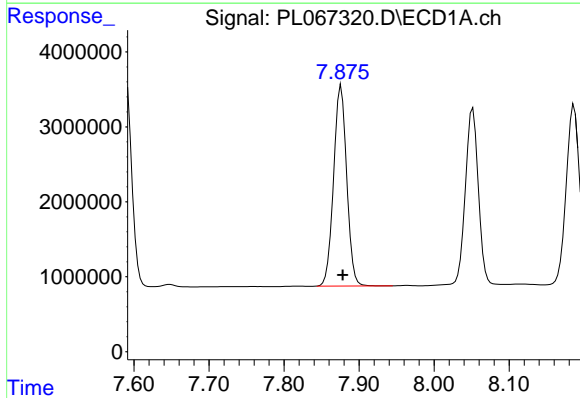


#13 Dieldrin  
 R.T.: 7.589 min  
 Delta R.T.: -0.002 min  
 Response: 34642181  
 Conc: 49.42 ng/ml

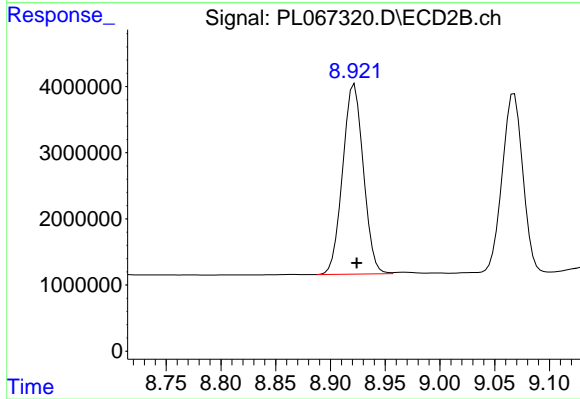
Instrument :  
 ECD\_L  
 ClientSampled :



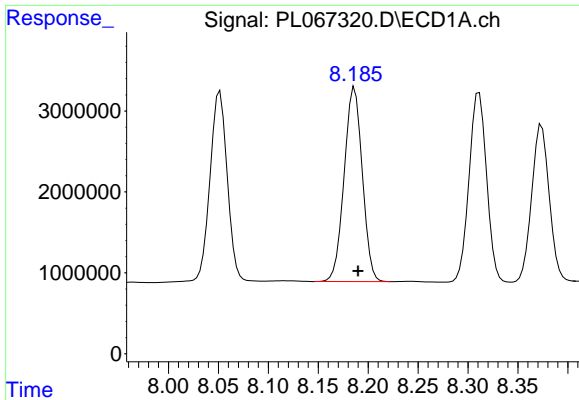
#13 Dieldrin  
 R.T.: 8.683 min  
 Delta R.T.: -0.002 min  
 Response: 44247186  
 Conc: 48.72 ng/ml



#14 Endrin  
 R.T.: 7.876 min  
 Delta R.T.: -0.002 min  
 Response: 32524964  
 Conc: 49.61 ng/ml

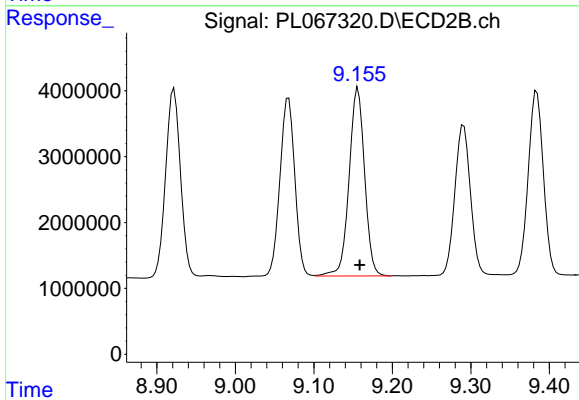


#14 Endrin  
 R.T.: 8.922 min  
 Delta R.T.: -0.002 min  
 Response: 37737893  
 Conc: 49.34 ng/ml

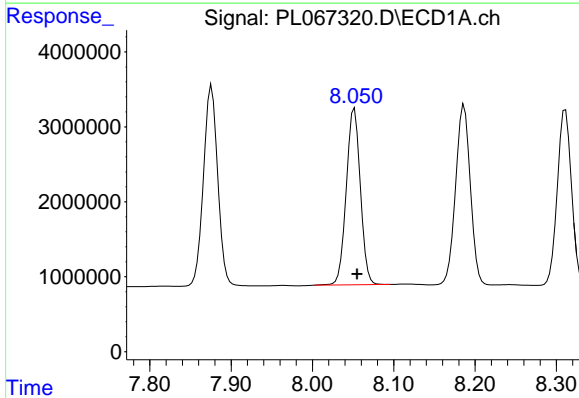


#15 Endosulfan II  
R.T.: 8.187 min  
Delta R.T.: -0.003 min  
Response: 30368149  
Conc: 49.31 ng/ml

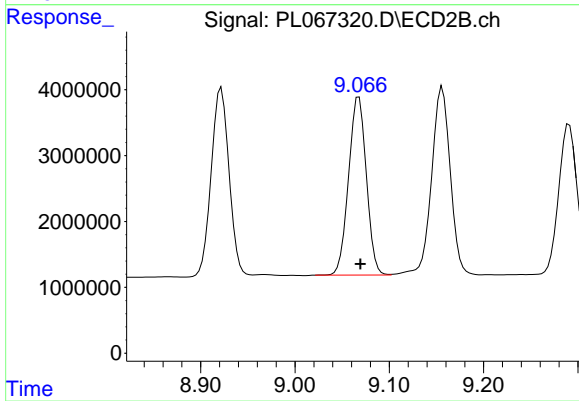
Instrument :  
ECD\_L  
ClientSampled :



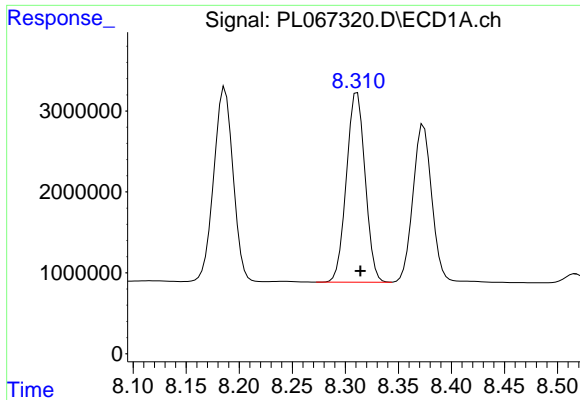
#15 Endosulfan II  
R.T.: 9.156 min  
Delta R.T.: -0.002 min  
Response: 39214154  
Conc: 49.18 ng/ml



#16 4,4'-DDD  
R.T.: 8.052 min  
Delta R.T.: -0.003 min  
Response: 28279017  
Conc: 48.65 ng/ml

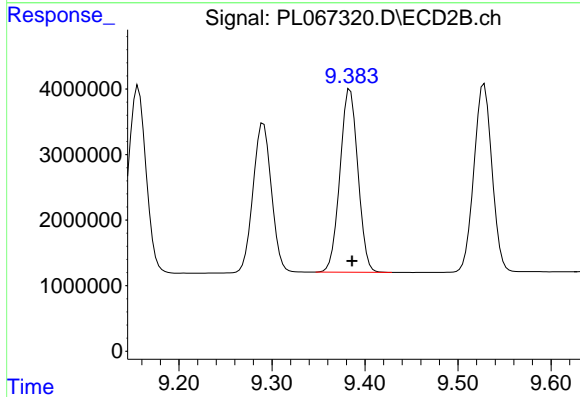


#16 4,4'-DDD  
R.T.: 9.068 min  
Delta R.T.: -0.001 min  
Response: 35550113  
Conc: 49.99 ng/ml

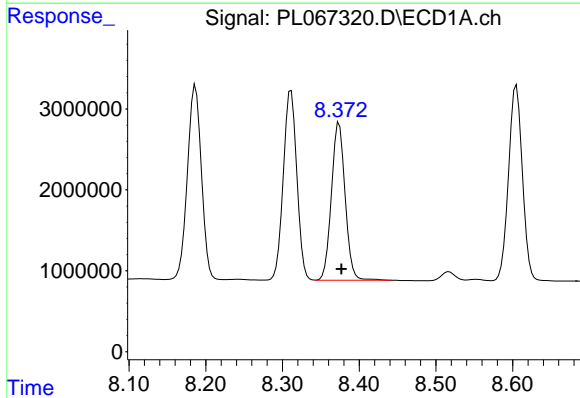


#17 4,4'-DDT  
 R.T.: 8.311 min  
 Delta R.T.: -0.003 min  
 Response: 28668908  
 Conc: 49.27 ng/ml

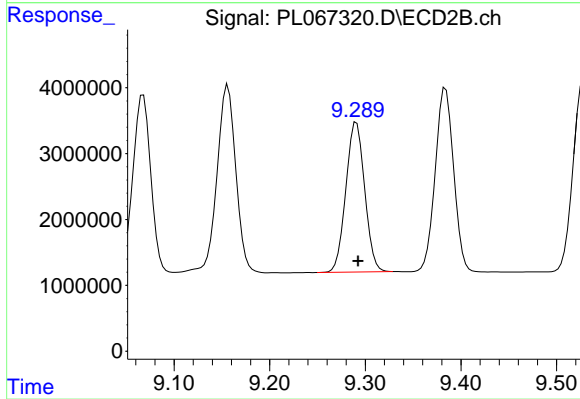
Instrument :  
 ECD\_L  
 ClientSampled :



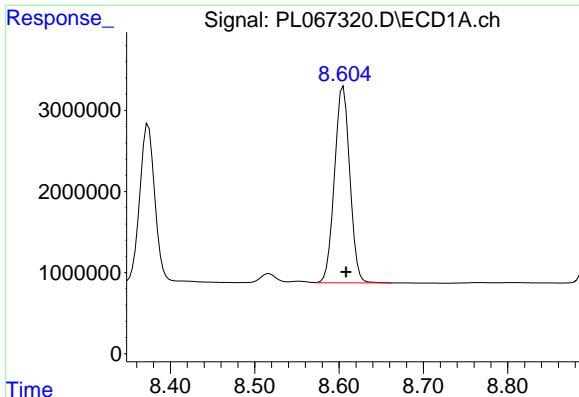
#17 4,4'-DDT  
 R.T.: 9.384 min  
 Delta R.T.: -0.002 min  
 Response: 37473154  
 Conc: 51.11 ng/ml



#18 Endrin aldehyde  
 R.T.: 8.374 min  
 Delta R.T.: -0.003 min  
 Response: 24158776  
 Conc: 47.72 ng/ml



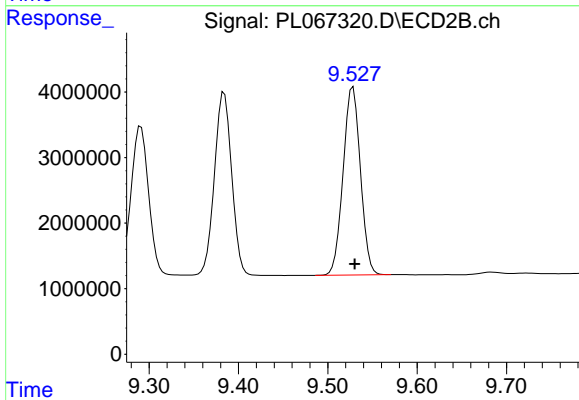
#18 Endrin aldehyde  
 R.T.: 9.291 min  
 Delta R.T.: -0.002 min  
 Response: 31241765  
 Conc: 48.92 ng/ml



#19 Endosulfan Sulfate

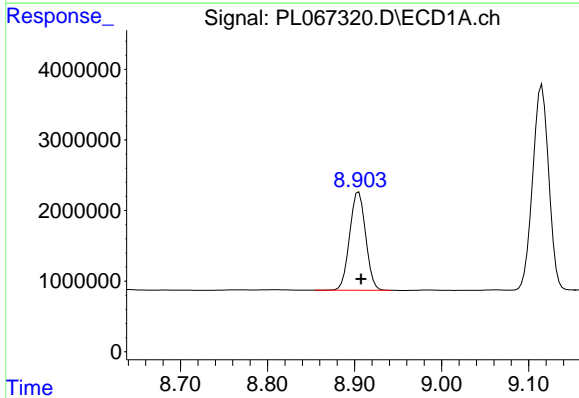
R.T.: 8.605 min  
 Delta R.T.: -0.003 min  
 Response: 30558963  
 Conc: 48.14 ng/ml

Instrument :  
 ECD\_L  
 ClientSampled :



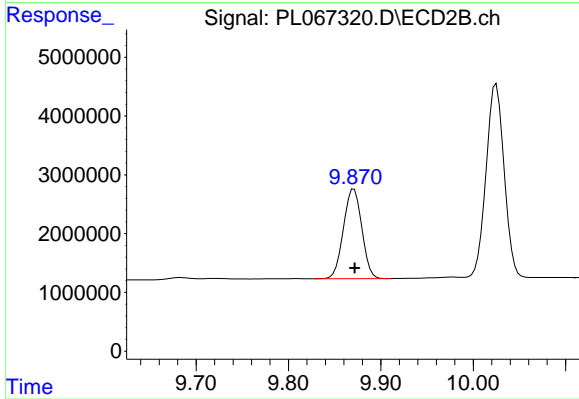
#19 Endosulfan Sulfate

R.T.: 9.528 min  
 Delta R.T.: -0.002 min  
 Response: 38635260  
 Conc: 48.65 ng/ml



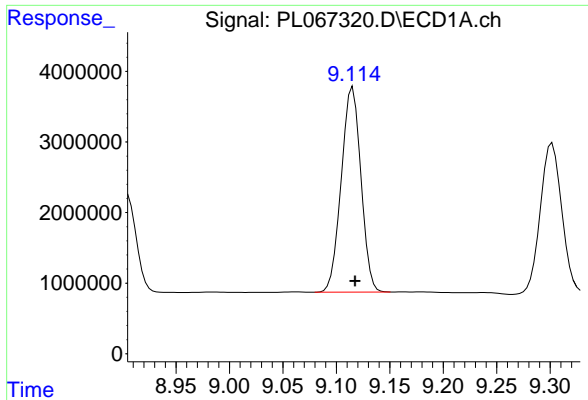
#20 Methoxychlor

R.T.: 8.905 min  
 Delta R.T.: -0.003 min  
 Response: 17787214  
 Conc: 50.04 ng/ml



#20 Methoxychlor

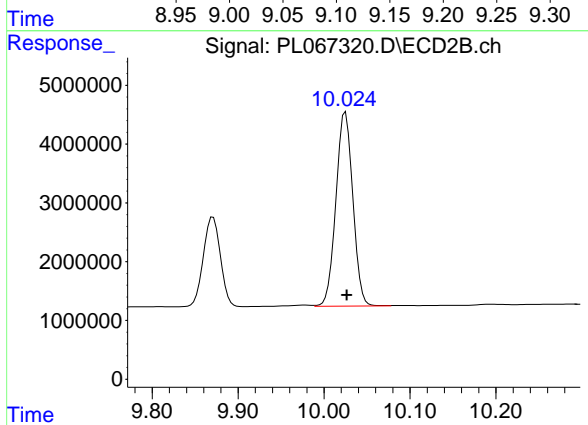
R.T.: 9.871 min  
 Delta R.T.: 0.000 min  
 Response: 21074663  
 Conc: 54.20 ng/ml



#21 Endrin ketone

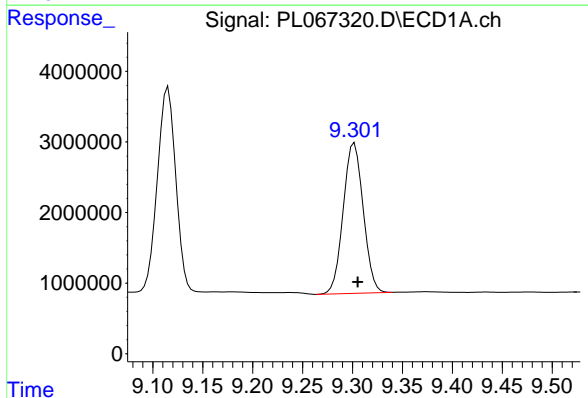
R.T.: 9.115 min  
 Delta R.T.: -0.002 min  
 Response: 37201176  
 Conc: 48.86 ng/ml

Instrument :  
 ECD\_L  
 ClientSampled :



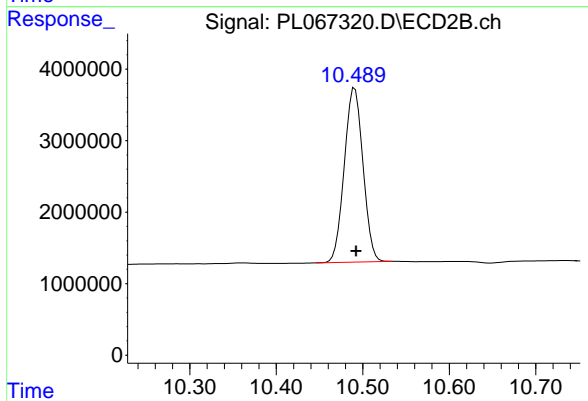
#21 Endrin ketone

R.T.: 10.025 min  
 Delta R.T.: -0.002 min  
 Response: 45124990  
 Conc: 49.79 ng/ml



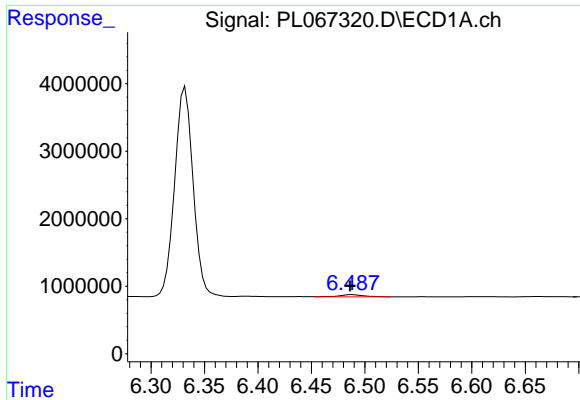
#22 Mirex

R.T.: 9.302 min  
 Delta R.T.: -0.004 min  
 Response: 29730958  
 Conc: 47.21 ng/ml



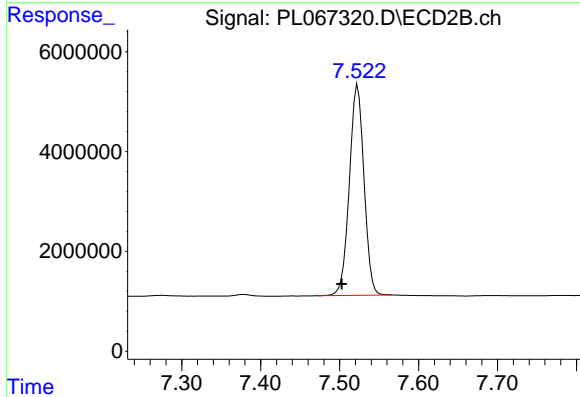
#22 Mirex

R.T.: 10.491 min  
 Delta R.T.: -0.001 min  
 Response: 36394738  
 Conc: 48.14 ng/ml

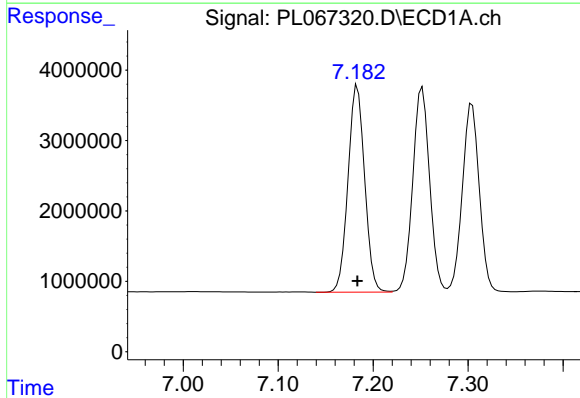


#24 Chlordane-2  
 R.T.: 6.488 min  
 Delta R.T.: 0.002 min  
 Response: 458365  
 Conc: 17.12 ng/ml

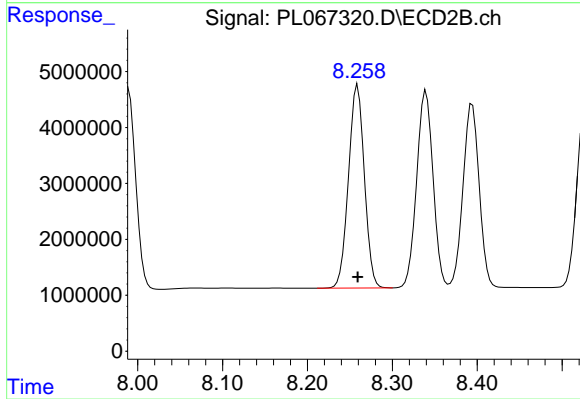
Instrument :  
 ECD\_L  
 ClientSampled :



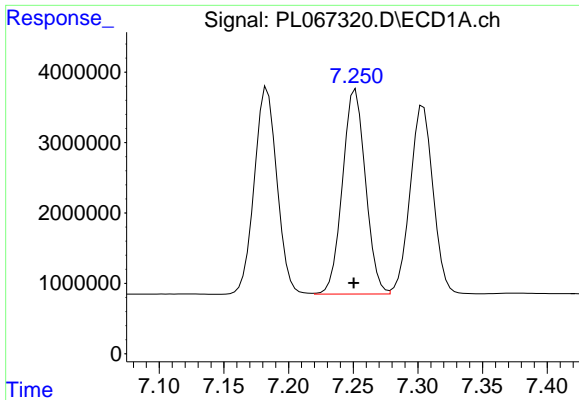
#24 Chlordane-2  
 R.T.: 7.523 min  
 Delta R.T.: 0.020 min  
 Response: 54547992  
 Conc: 1496.67 ng/ml



#25 Chlordane-3  
 R.T.: 7.184 min  
 Delta R.T.: 0.000 min  
 Response: 35730840  
 Conc: 531.78 ng/ml

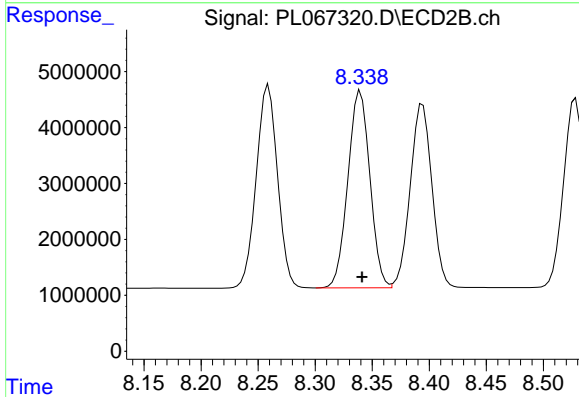


#25 Chlordane-3  
 R.T.: 8.259 min  
 Delta R.T.: 0.000 min  
 Response: 47238582  
 Conc: 352.95 ng/ml

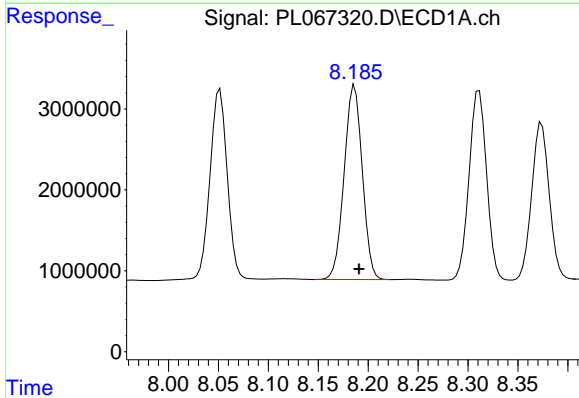


#26 Chlordane-4  
 R.T.: 7.252 min  
 Delta R.T.: 0.001 min  
 Response: 35915612  
 Conc: 491.47 ng/ml

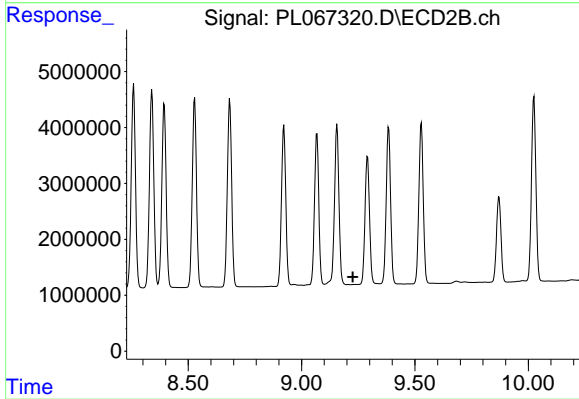
Instrument :  
 ECD\_L  
 ClientSampled :



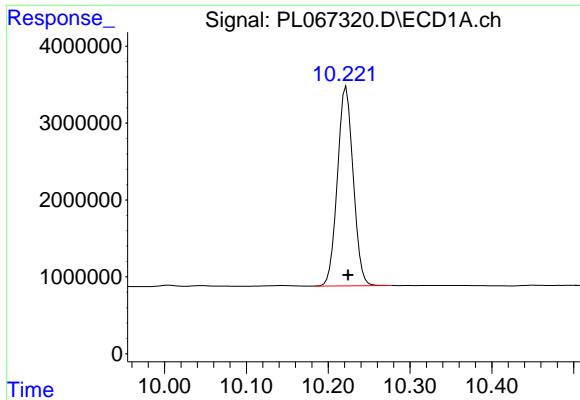
#26 Chlordane-4  
 R.T.: 8.340 min  
 Delta R.T.: -0.001 min  
 Response: 47371559  
 Conc: 292.24 ng/ml



#27 Chlordane-5  
 R.T.: 8.187 min  
 Delta R.T.: -0.004 min  
 Response: 30368149  
 Conc: 1388.00 ng/ml



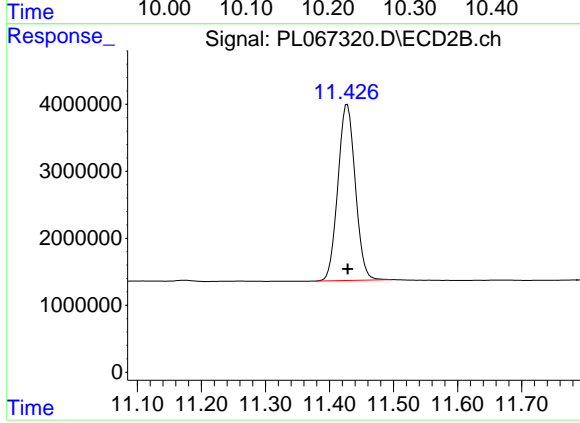
#27 Chlordane-5  
 R.T.: 0.000 min  
 Exp R.T.: 9.227 min  
 Response: 0  
 Conc: N.D.



#28 Decachlorobiphenyl

R.T.: 10.222 min  
Delta R.T.: -0.002 min  
Response: 34650713  
Conc: 48.89 ng/ml

Instrument :  
ECD\_L  
ClientSampleId :



#28 Decachlorobiphenyl

R.T.: 11.428 min  
Delta R.T.: 0.000 min  
Response: 49501098  
Conc: 49.70 ng/ml