

Data Path : Z:\pestpcbsrv\HPCHEM1\ECD\_L\Data\PL061221\  
 Data File : PL067353.D  
 Signal(s) : Signal #1: ECD1A.ch Signal #2: ECD2B.ch  
 Acq On : 12 Jun 2021 23:13  
 Operator : AR\AJ  
 Sample : M2625-36  
 Misc :  
 ALS Vial : 32 Sample Multiplier: 1

Instrument :  
 ECD\_L  
 ClientSampleId :

Integration File signal 1: autoint1.e  
 Integration File signal 2: autoint2.e  
 Quant Time: Jun 14 09:00:13 2021  
 Quant Method : Z:\pestpcbsrv\HPCHEM1\ECD\_L\methods\PL061021.M  
 Quant Title : GC Extractables  
 QLast Update : Fri Jun 11 02:00:12 2021  
 Response via : Initial Calibration  
 Integrator: ChemStation

Volume Inj. : 1 µl  
 Signal #1 Phase : ZB-MR2 Signal #2 Phase: ZB-MR1  
 Signal #1 Info : 30M x 0.32mm x0.2 Signal #2 Info : 30M x 0.32mm x0.5µm

Compound	RT#1	RT#2	Resp#1	Resp#2	ng/ml	ng/ml
-----						
System Monitoring Compounds						
1) SA Tetrachlo...	4.478	5.528	6953899	11744436	12.648	12.458
28) SA Decachlor...	10.220	11.426	9760198	14743873	13.772	14.802
Target Compounds						
2) A alpha-BHC	5.170	0.000	362997	0	0.494	N.D. #
6) B beta-BHC	5.961f	6.778f	307198	-333034	0.859	N.D. #
7) B delta-BHC	0.000	7.004f	0	1705632	N.D.	1.451 #
15) B Endosulfa...	0.000	9.175f	0	373440	N.D.	0.468 #
-----						

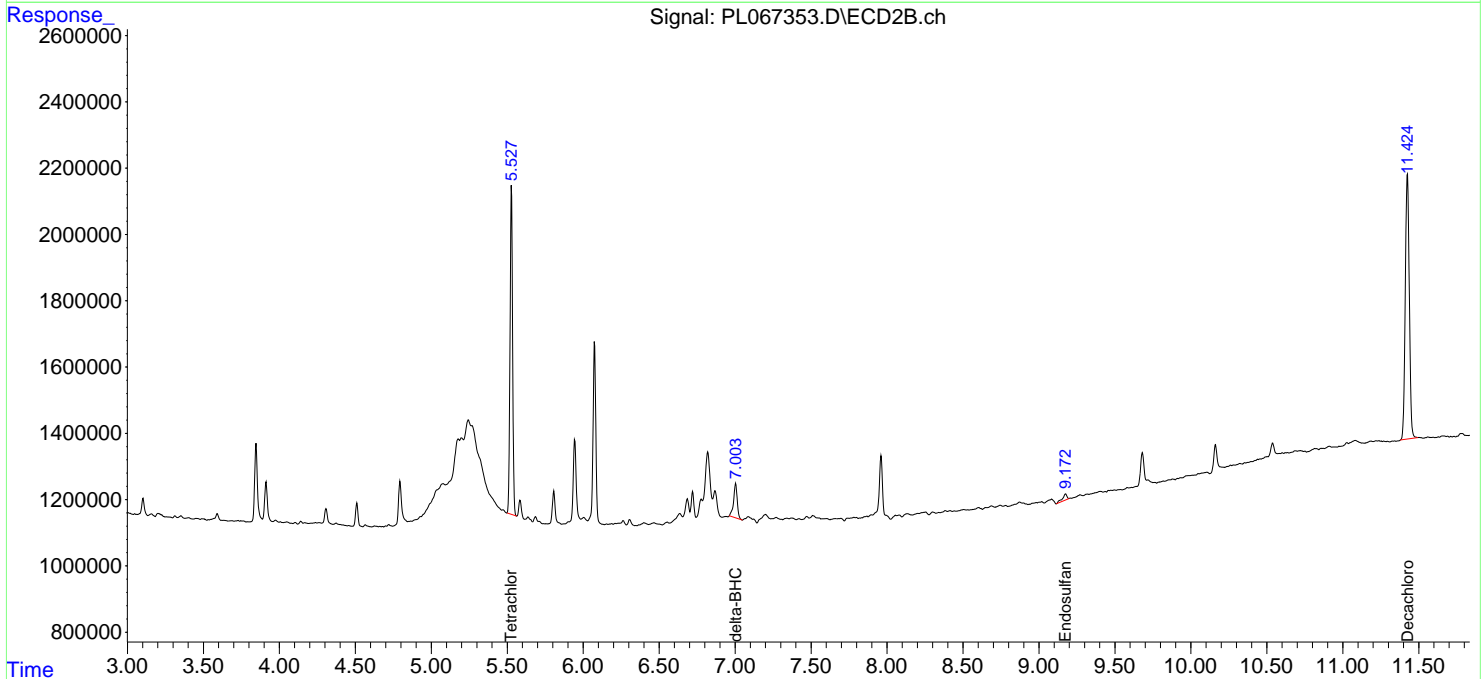
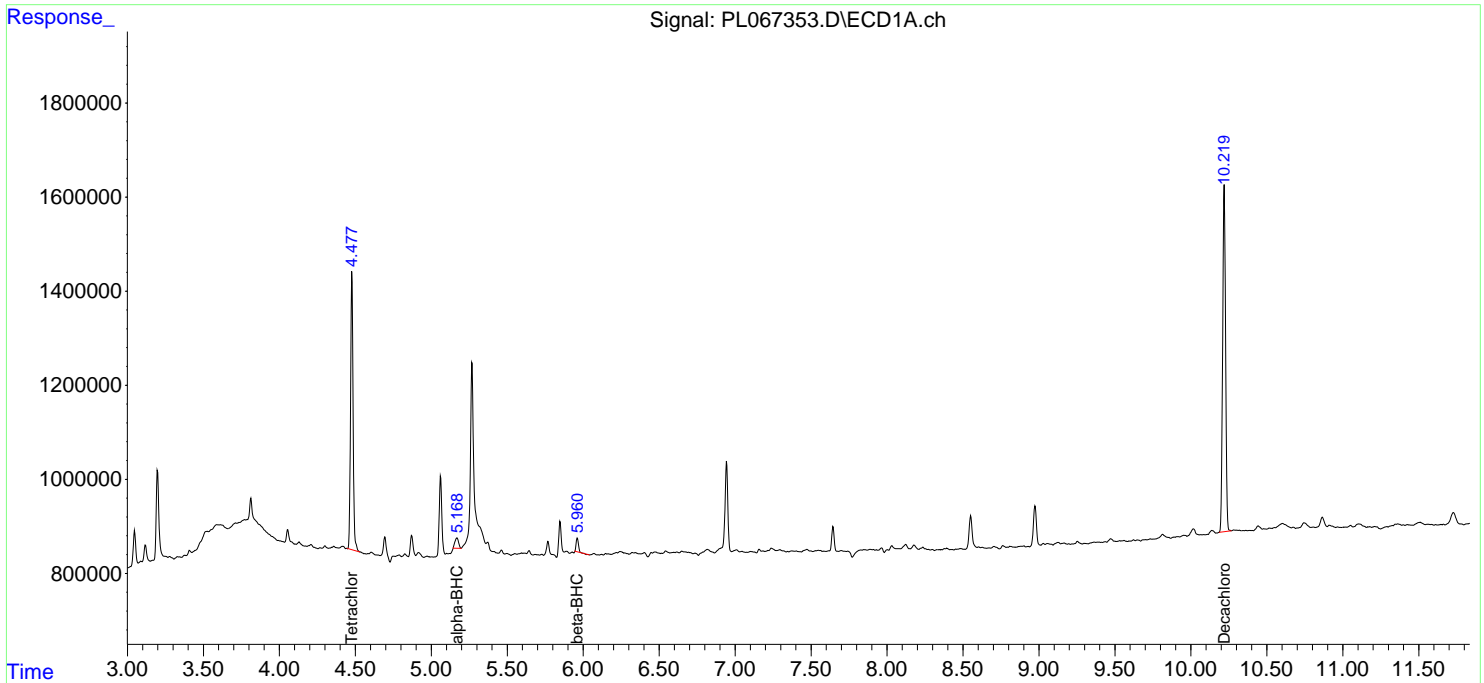
(f)=RT Delta > 1/2 Window (#)=Amounts differ by > 25% (m)=manual int.

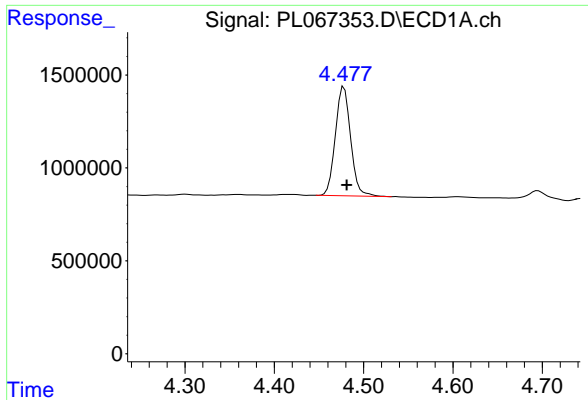
Data Path : Z:\pestpcbsrv\HPCHEM1\ECD\_L\Data\PL061221\  
 Data File : PL067353.D  
 Signal(s) : Signal #1: ECD1A.ch Signal #2: ECD2B.ch  
 Acq On : 12 Jun 2021 23:13  
 Operator : AR\AJ  
 Sample : M2625-36  
 Misc :  
 ALS Vial : 32 Sample Multiplier: 1

Instrument :  
 ECD\_L  
 ClientSampled :

Integration File signal 1: autoint1.e  
 Integration File signal 2: autoint2.e  
 Quant Time: Jun 14 09:00:13 2021  
 Quant Method : Z:\pestpcbsrv\HPCHEM1\ECD\_L\methods\PL061021.M  
 Quant Title : GC Extractables  
 QLast Update : Fri Jun 11 02:00:12 2021  
 Response via : Initial Calibration  
 Integrator: ChemStation

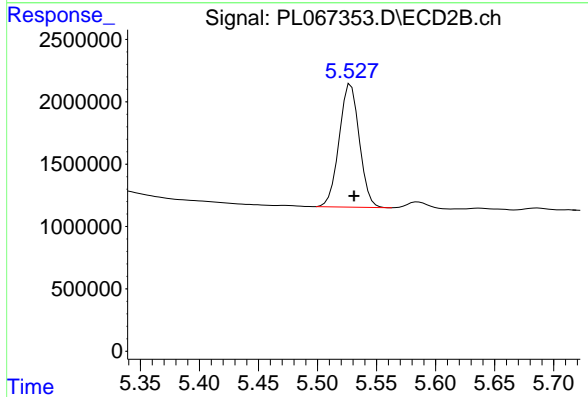
Volume Inj. : 1 µl  
 Signal #1 Phase : ZB-MR2 Signal #2 Phase: ZB-MR1  
 Signal #1 Info : 30M x 0.32mm x0.2 Signal #2 Info : 30M x 0.32mm x0.5µm



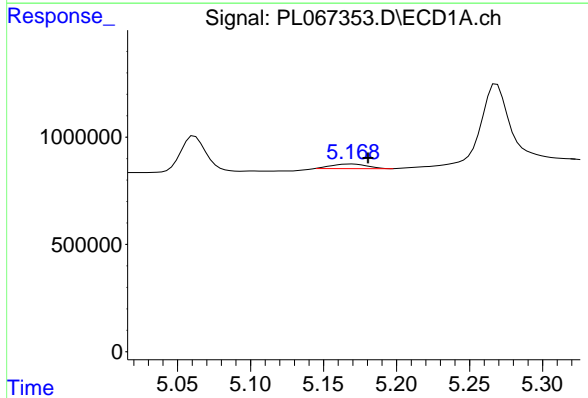


#1 Tetrachloro-m-xylene  
 R.T.: 4.478 min  
 Delta R.T.: -0.003 min  
 Response: 6953899  
 Conc: 12.65 ng/ml

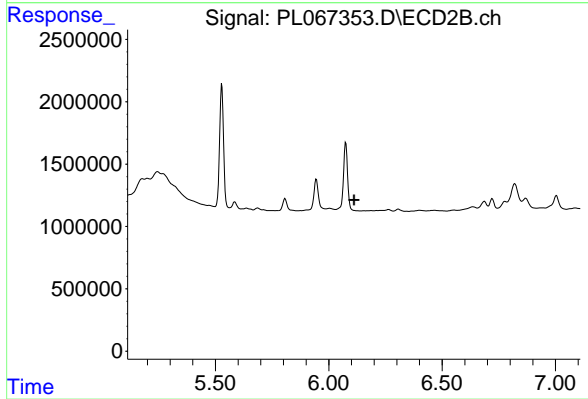
Instrument :  
 ECD\_L  
 ClientSampleId :



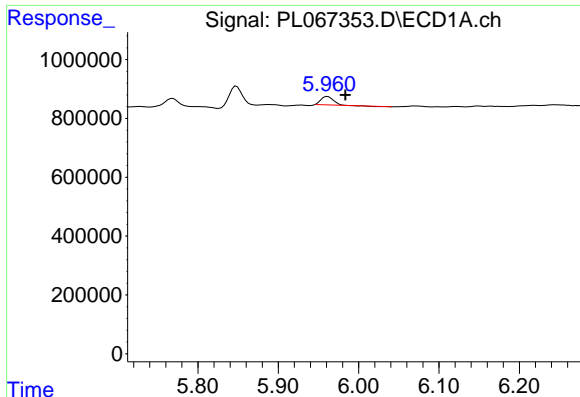
#1 Tetrachloro-m-xylene  
 R.T.: 5.528 min  
 Delta R.T.: -0.003 min  
 Response: 11744436  
 Conc: 12.46 ng/ml



#2 alpha-BHC  
 R.T.: 5.170 min  
 Delta R.T.: -0.011 min  
 Response: 362997  
 Conc: 0.49 ng/ml



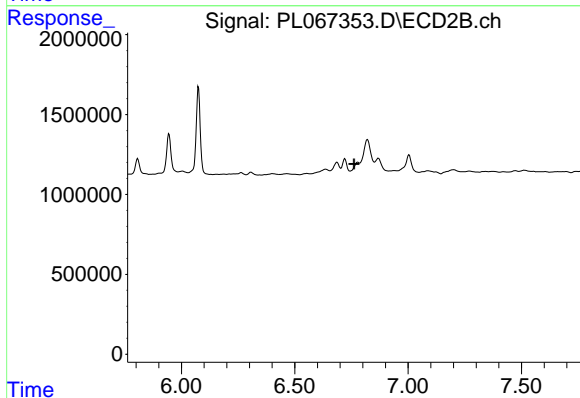
#2 alpha-BHC  
 R.T.: 0.000 min  
 Exp R.T. : 6.112 min  
 Response: 0  
 Conc: N.D.



#6 beta-BHC

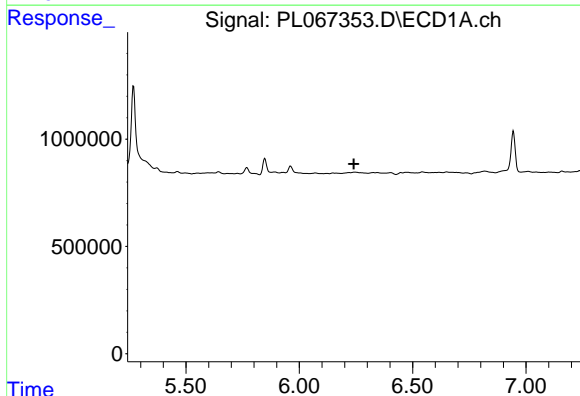
R.T.: 5.961 min  
 Delta R.T.: -0.022 min  
 Response: 307198  
 Conc: 0.86 ng/ml

Instrument :  
 ECD\_L  
 ClientSampleId :



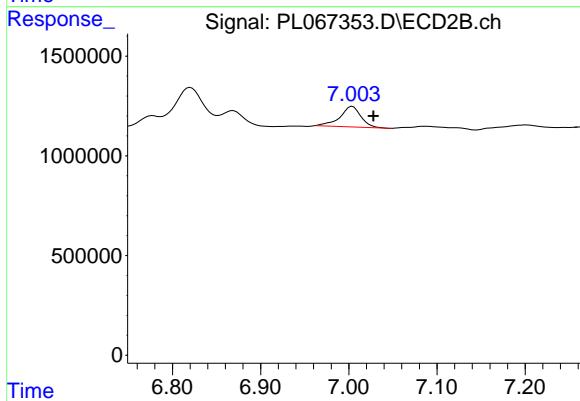
#6 beta-BHC

R.T.: 6.778 min  
 Delta R.T.: 0.016 min  
 Response: -333034  
 Conc: N.D.



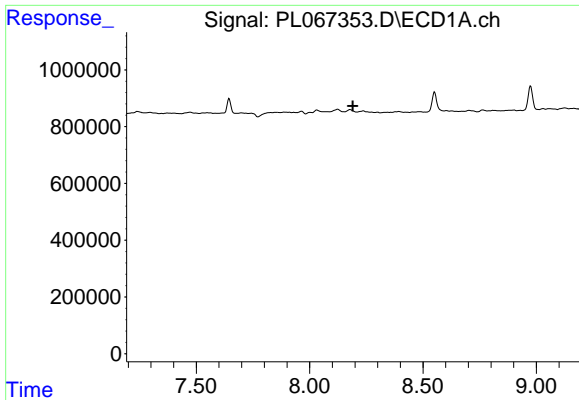
#7 delta-BHC

R.T.: 0.000 min  
 Exp R.T. : 6.241 min  
 Response: 0  
 Conc: N.D.



#7 delta-BHC

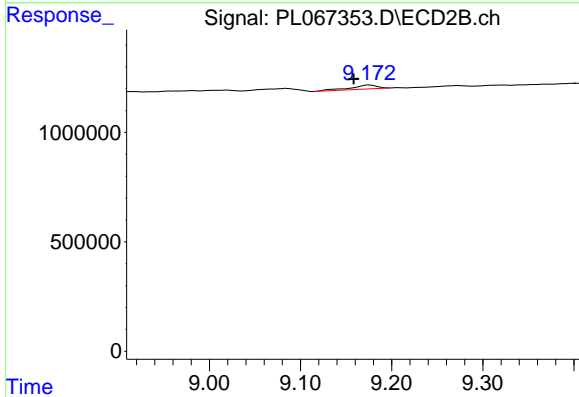
R.T.: 7.004 min  
 Delta R.T.: -0.024 min  
 Response: 1705632  
 Conc: 1.45 ng/ml



#15 Endosulfan II

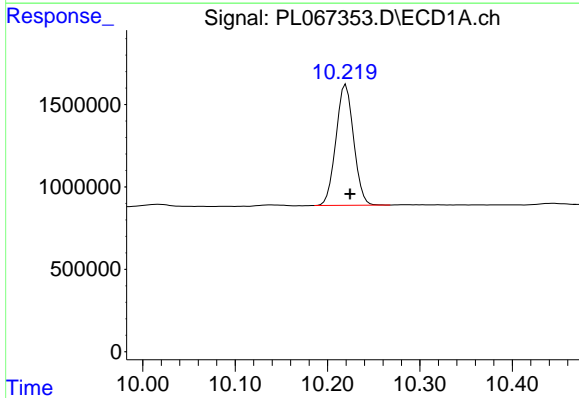
R.T.: 0.000 min  
 Exp R.T.: 8.190 min  
 Response: 0  
 Conc: N.D.

Instrument :  
 ECD\_L  
 ClientSampleId :



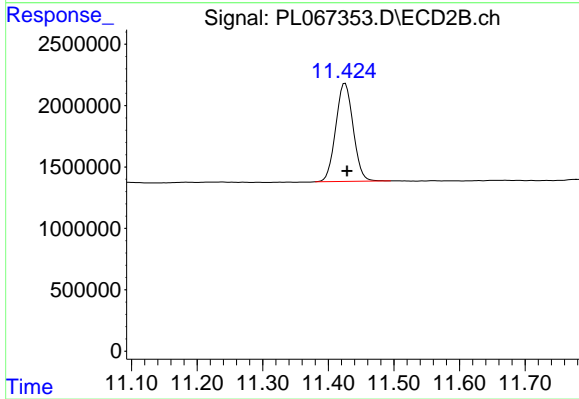
#15 Endosulfan II

R.T.: 9.175 min  
 Delta R.T.: 0.017 min  
 Response: 373440  
 Conc: 0.47 ng/ml



#28 Decachlorobiphenyl

R.T.: 10.220 min  
 Delta R.T.: -0.005 min  
 Response: 9760198  
 Conc: 13.77 ng/ml



#28 Decachlorobiphenyl

R.T.: 11.426 min  
 Delta R.T.: -0.003 min  
 Response: 14743873  
 Conc: 14.80 ng/ml