

Data Path : Z:\pestpcbsrv\HPCHEM1\ECD_L\Data\PL061221\
 Data File : PL067375.D
 Signal(s) : Signal #1: ECD1A.ch Signal #2: ECD2B.ch
 Acq On : 13 Jun 2021 05:18
 Operator : AR\AJ
 Sample : M2678-04
 Misc :
 ALS Vial : 52 Sample Multiplier: 1

Instrument :
 ECD_L
 ClientSampleId :

Integration File signal 1: autoint1.e
 Integration File signal 2: autoint2.e
 Quant Time: Jun 14 09:05:02 2021
 Quant Method : Z:\pestpcbsrv\HPCHEM1\ECD_L\methods\PL061021.M
 Quant Title : GC Extractables
 QLast Update : Fri Jun 11 02:00:12 2021
 Response via : Initial Calibration
 Integrator: ChemStation

Volume Inj. : 1 µl
 Signal #1 Phase : ZB-MR2 Signal #2 Phase: ZB-MR1
 Signal #1 Info : 30M x 0.32mm x0.2 Signal #2 Info : 30M x 0.32mm x0.5µm

Compound	RT#1	RT#2	Resp#1	Resp#2	ng/ml	ng/ml

System Monitoring Compounds						
1) SA Tetrachlo...	4.479	5.528	10668062	18074192	19.404	19.172
28) SA Decachlor...	10.220	11.425	13824811	20529239	19.508	20.611
Target Compounds						
2) A alpha-BHC	5.178	0.000	394402	0	0.536	N.D. #
7) B delta-BHC	0.000	7.002f	0	934506	N.D.	0.795 #
14) MA Endrin	7.894f	0.000	147550	0	0.225	N.D. #

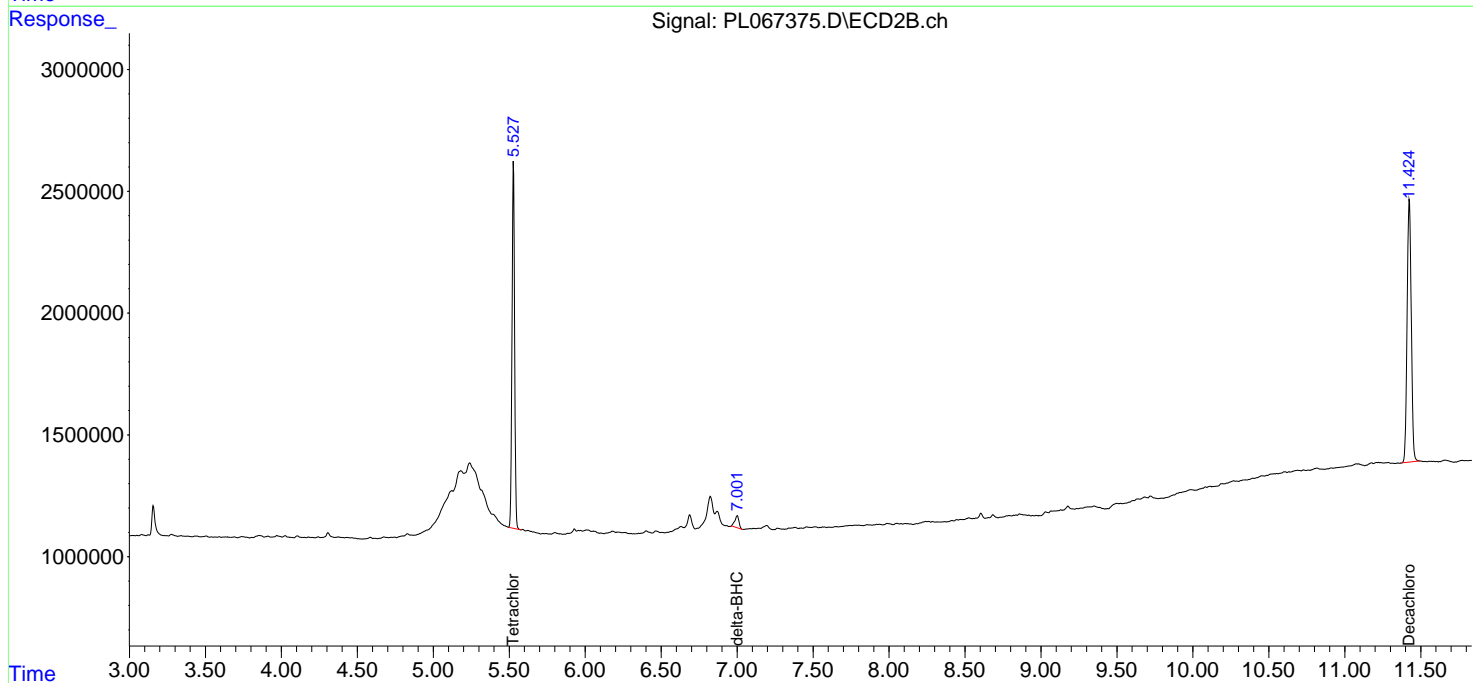
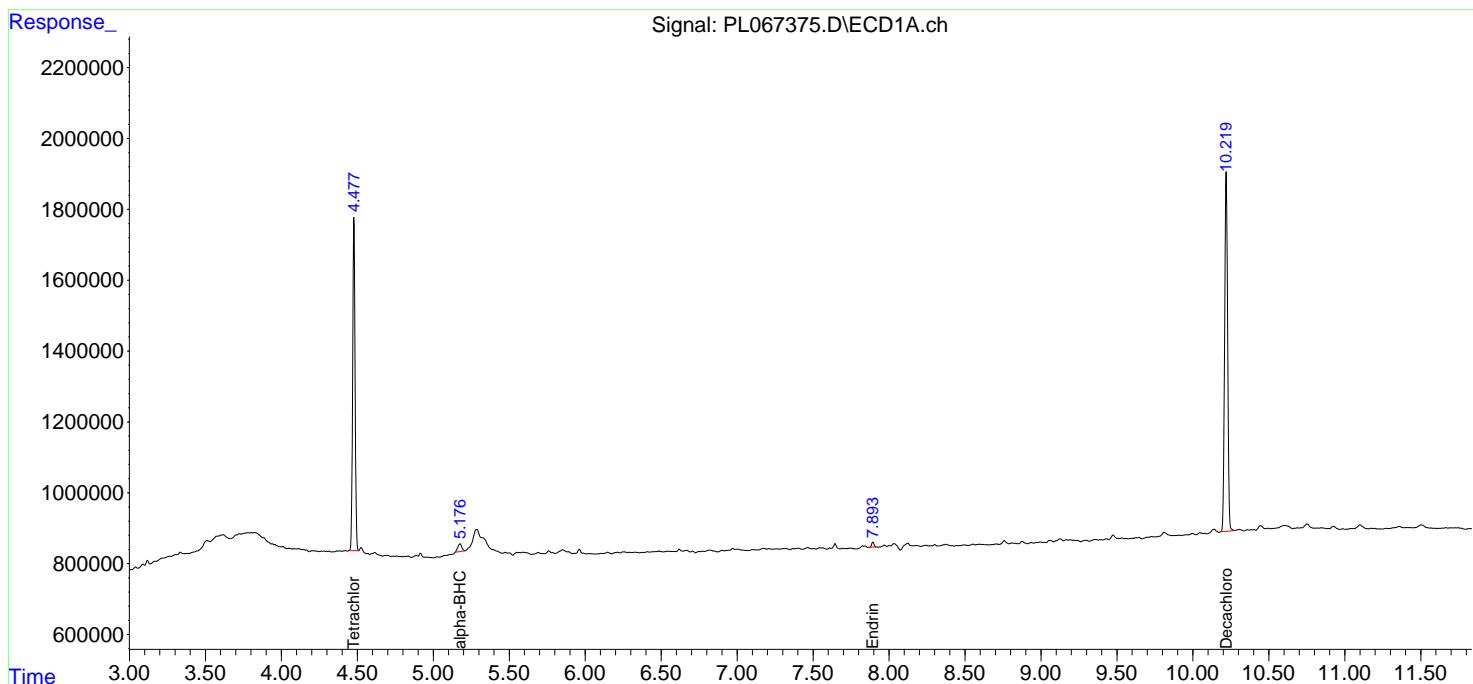
(f)=RT Delta > 1/2 Window (#)=Amounts differ by > 25% (m)=manual int.

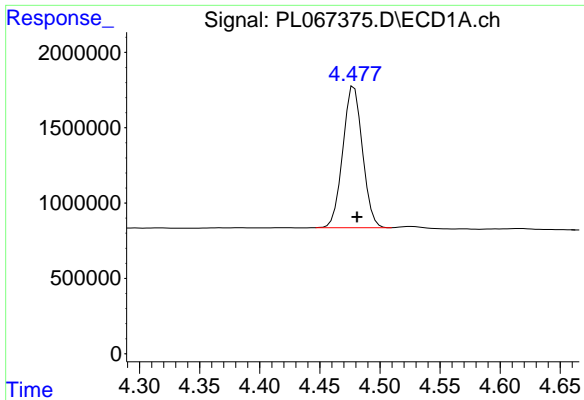
Data Path : Z:\pestpcbsrv\HPCHEM1\ECD_L\Data\PL061221\
 Data File : PL067375.D
 Signal(s) : Signal #1: ECD1A.ch Signal #2: ECD2B.ch
 Acq On : 13 Jun 2021 05:18
 Operator : AR\AJ
 Sample : M2678-04
 Misc :
 ALS Vial : 52 Sample Multiplier: 1

Instrument :
 ECD_L
 ClientSampled :

Integration File signal 1: autoint1.e
 Integration File signal 2: autoint2.e
 Quant Time: Jun 14 09:05:02 2021
 Quant Method : Z:\pestpcbsrv\HPCHEM1\ECD_L\methods\PL061021.M
 Quant Title : GC Extractables
 QLast Update : Fri Jun 11 02:00:12 2021
 Response via : Initial Calibration
 Integrator: ChemStation

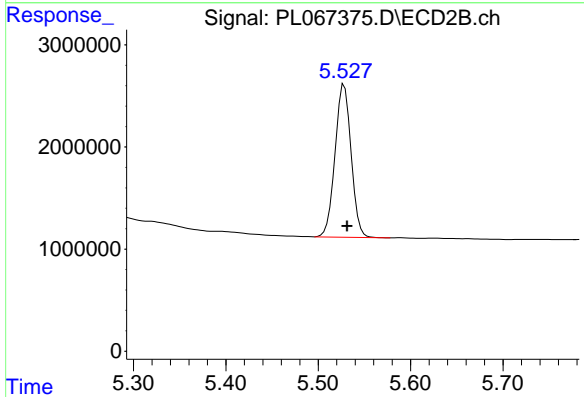
Volume Inj. : 1 µl
 Signal #1 Phase : ZB-MR2 Signal #2 Phase: ZB-MR1
 Signal #1 Info : 30M x 0.32mm x0.2 Signal #2 Info : 30M x 0.32mm x0.5µm



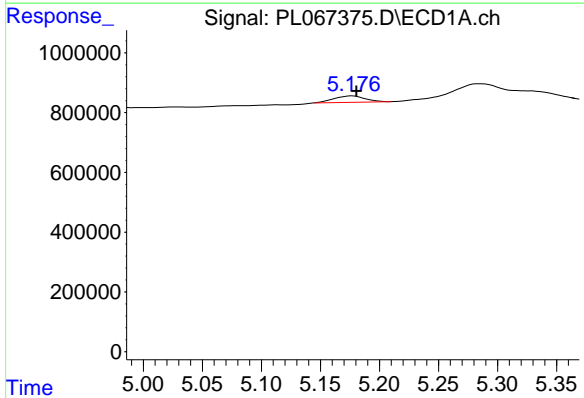


#1 Tetrachloro-m-xylene
 R.T.: 4.479 min
 Delta R.T.: -0.002 min
 Response: 10668062
 Conc: 19.40 ng/ml

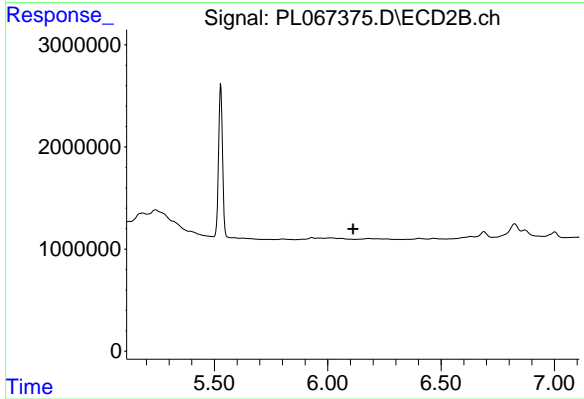
Instrument :
 ECD_L
 ClientSampleId :



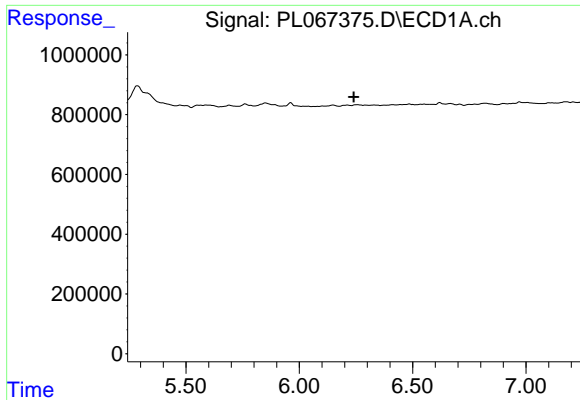
#1 Tetrachloro-m-xylene
 R.T.: 5.528 min
 Delta R.T.: -0.003 min
 Response: 18074192
 Conc: 19.17 ng/ml



#2 alpha-BHC
 R.T.: 5.178 min
 Delta R.T.: -0.003 min
 Response: 394402
 Conc: 0.54 ng/ml

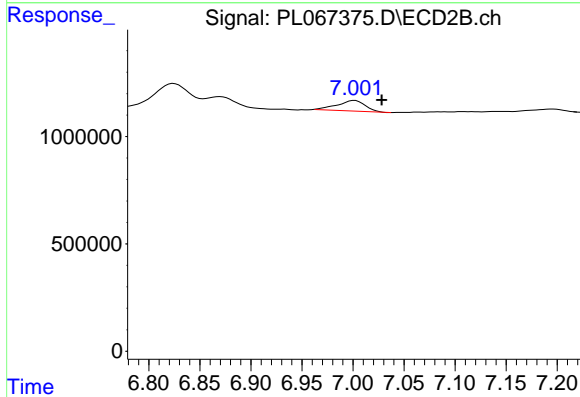


#2 alpha-BHC
 R.T.: 0.000 min
 Exp R.T. : 6.112 min
 Response: 0
 Conc: N.D.

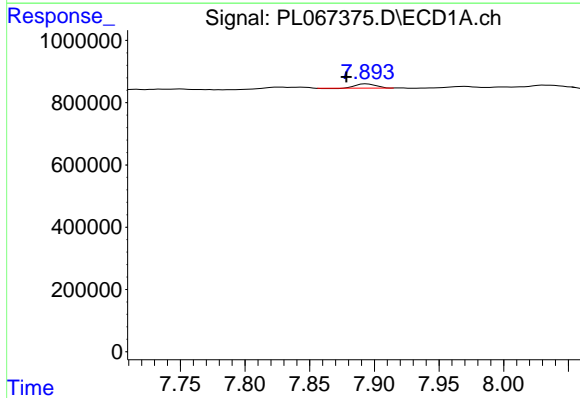


#7 delta-BHC
 R.T.: 0.000 min
 Exp R.T.: 6.241 min
 Response: 0
 Conc: N.D.

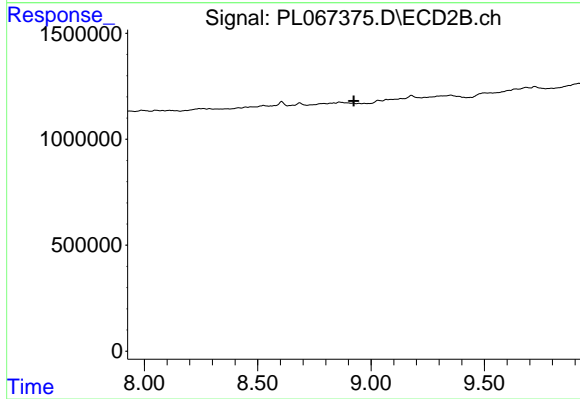
Instrument :
 ECD_L
 ClientSampleId :



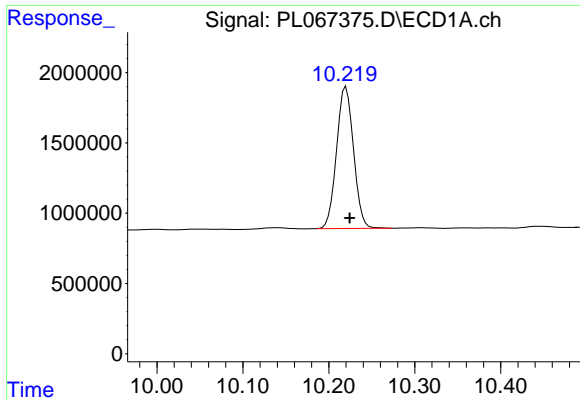
#7 delta-BHC
 R.T.: 7.002 min
 Delta R.T.: -0.026 min
 Response: 934506
 Conc: 0.79 ng/ml



#14 Endrin
 R.T.: 7.894 min
 Delta R.T.: 0.016 min
 Response: 147550
 Conc: 0.23 ng/ml



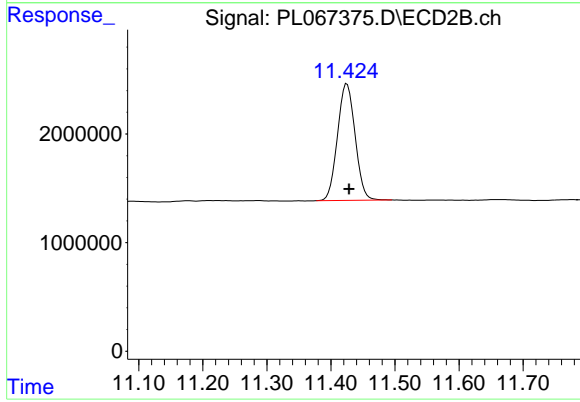
#14 Endrin
 R.T.: 0.000 min
 Exp R.T.: 8.924 min
 Response: 0
 Conc: N.D.



#28 Decachlorobiphenyl

R.T.: 10.220 min
Delta R.T.: -0.004 min
Response: 13824811
Conc: 19.51 ng/ml

Instrument :
ECD_L
ClientSampleId :



#28 Decachlorobiphenyl

R.T.: 11.425 min
Delta R.T.: -0.003 min
Response: 20529239
Conc: 20.61 ng/ml