

Data Path : Z:\pestpcbsrv\HPCHEM1\ECD_L\Data\PL061221\
 Data File : PL067383.D
 Signal(s) : Signal #1: ECD1A.ch Signal #2: ECD2B.ch
 Acq On : 13 Jun 2021 07:31
 Operator : AR\AJ
 Sample : M2678-09
 Misc :
 ALS Vial : 57 Sample Multiplier: 1

Instrument :
 ECD_L
 ClientSampleId :

Integration File signal 1: autoint1.e
 Integration File signal 2: autoint2.e
 Quant Time: Jun 14 09:06:46 2021
 Quant Method : Z:\pestpcbsrv\HPCHEM1\ECD_L\methods\PL061021.M
 Quant Title : GC Extractables
 QLast Update : Fri Jun 11 02:00:12 2021
 Response via : Initial Calibration
 Integrator: ChemStation

Volume Inj. : 1 µl
 Signal #1 Phase : ZB-MR2 Signal #2 Phase: ZB-MR1
 Signal #1 Info : 30M x 0.32mm x0.2 Signal #2 Info : 30M x 0.32mm x0.5µm

	Compound	RT#1	RT#2	Resp#1	Resp#2	ng/ml	ng/ml

System Monitoring Compounds							
1)	SA Tetrachlo...	4.478	5.528	12144600	20293955	22.090	21.527
28)	SA Decachlor...	10.220	11.426	13897575	20314061	19.610	20.394
Target Compounds							
2)	A alpha-BHC	5.177	0.000	376465	0	0.512	N.D. #
6)	B beta-BHC	5.962f	0.000	223352	0	0.624	N.D. #
7)	B delta-BHC	0.000	7.003f	0	1047263	N.D.	0.891 #
9)	A Endosulfan I	7.319	0.000	767064	0	1.141	N.D. #
20)	A Methoxychlor	8.910	0.000	349343	0	0.983	N.D. #

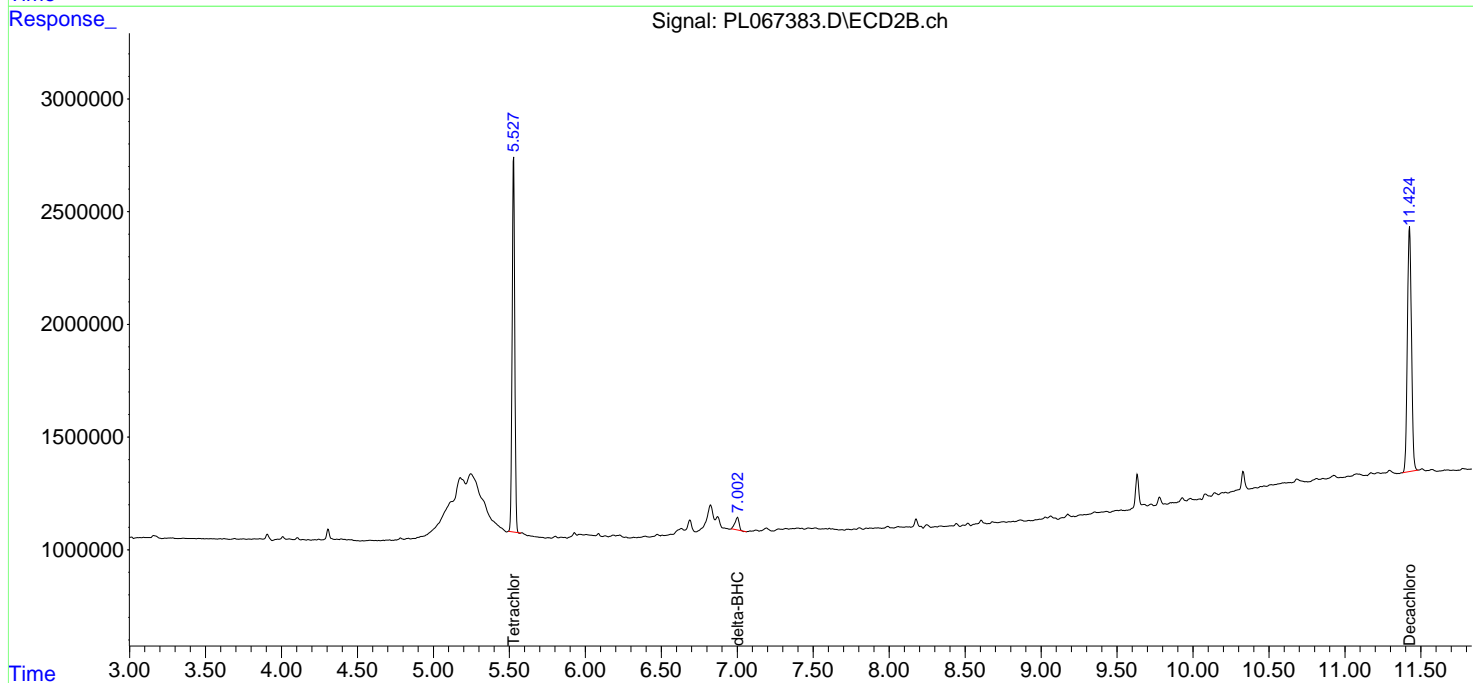
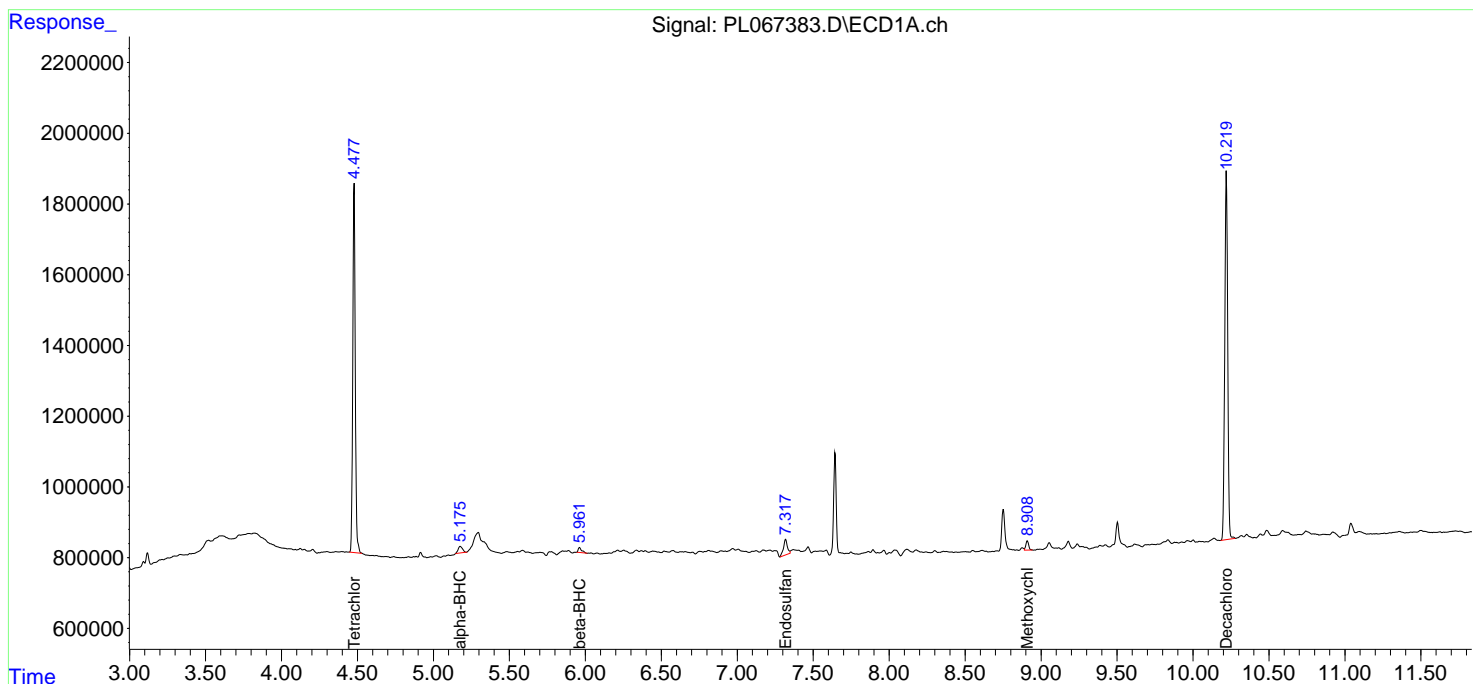
(f)=RT Delta > 1/2 Window (#)=Amounts differ by > 25% (m)=manual int.

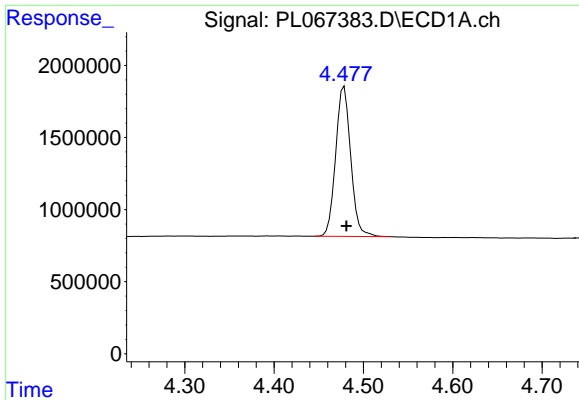
Data Path : Z:\pestpcbsrv\HPCHEM1\ECD_L\Data\PL061221\
 Data File : PL067383.D
 Signal(s) : Signal #1: ECD1A.ch Signal #2: ECD2B.ch
 Acq On : 13 Jun 2021 07:31
 Operator : AR\AJ
 Sample : M2678-09
 Misc :
 ALS Vial : 57 Sample Multiplier: 1

Instrument :
 ECD_L
 ClientSampled :

Integration File signal 1: autoint1.e
 Integration File signal 2: autoint2.e
 Quant Time: Jun 14 09:06:46 2021
 Quant Method : Z:\pestpcbsrv\HPCHEM1\ECD_L\methods\PL061021.M
 Quant Title : GC Extractables
 QLast Update : Fri Jun 11 02:00:12 2021
 Response via : Initial Calibration
 Integrator: ChemStation

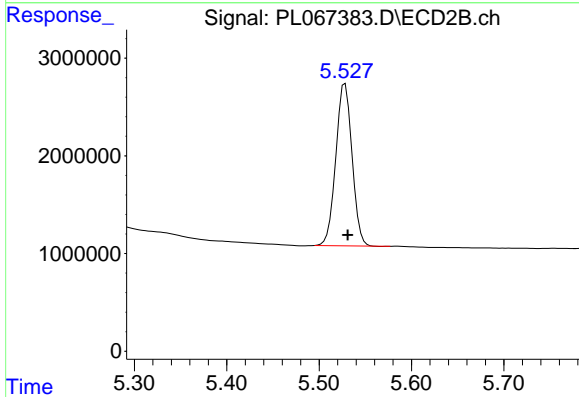
Volume Inj. : 1 µl
 Signal #1 Phase : ZB-MR2 Signal #2 Phase: ZB-MR1
 Signal #1 Info : 30M x 0.32mm x0.2 Signal #2 Info : 30M x 0.32mm x0.5µm



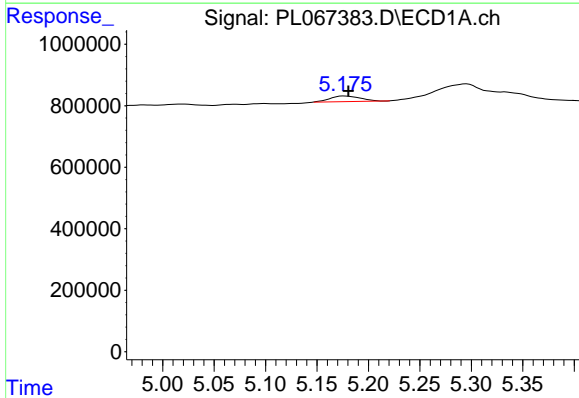


#1 Tetrachloro-m-xylene
 R.T.: 4.478 min
 Delta R.T.: -0.003 min
 Response: 12144600
 Conc: 22.09 ng/ml

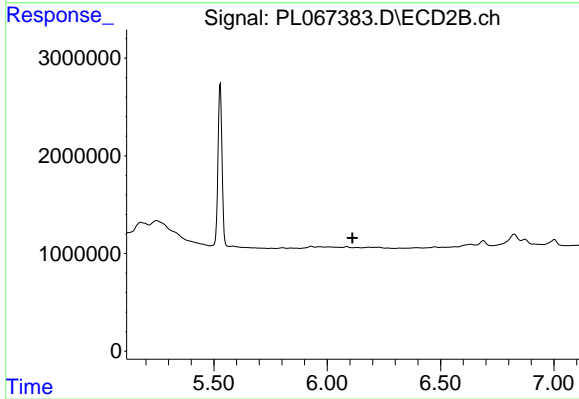
Instrument :
 ECD_L
 ClientSampled :



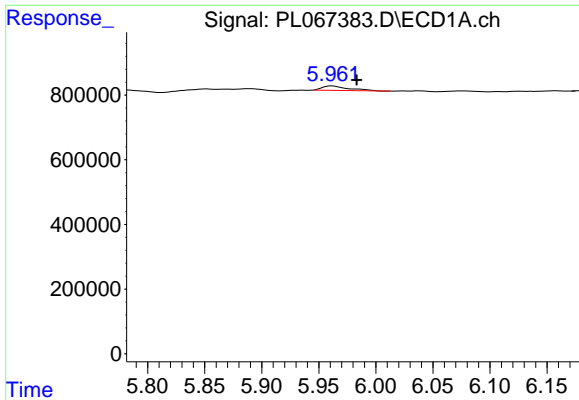
#1 Tetrachloro-m-xylene
 R.T.: 5.528 min
 Delta R.T.: -0.003 min
 Response: 20293955
 Conc: 21.53 ng/ml



#2 alpha-BHC
 R.T.: 5.177 min
 Delta R.T.: -0.004 min
 Response: 376465
 Conc: 0.51 ng/ml

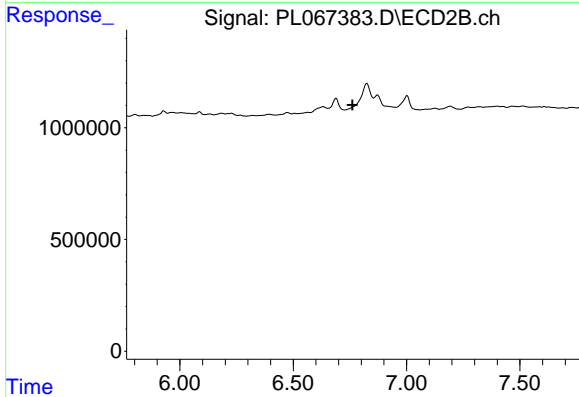


#2 alpha-BHC
 R.T.: 0.000 min
 Exp R.T. : 6.112 min
 Response: 0
 Conc: N.D.

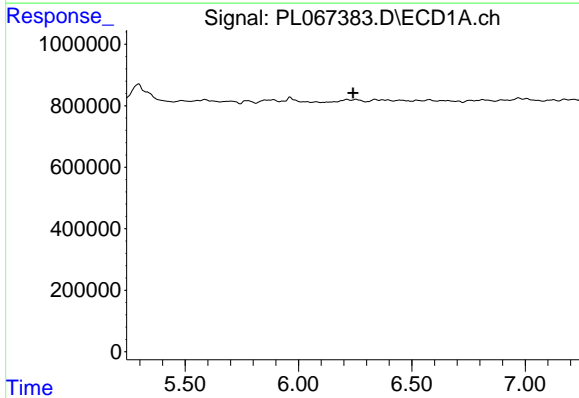


#6 beta-BHC
 R.T.: 5.962 min
 Delta R.T.: -0.021 min
 Response: 223352
 Conc: 0.62 ng/ml

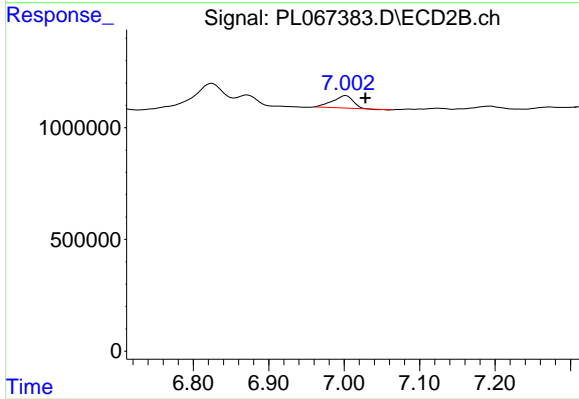
Instrument :
 ECD_L
 ClientSampleId :



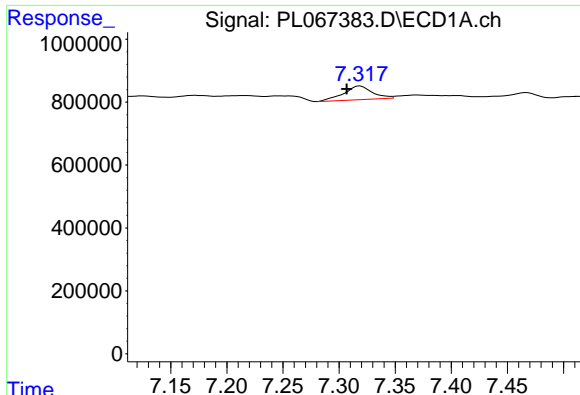
#6 beta-BHC
 R.T.: 0.000 min
 Exp R.T. : 6.762 min
 Response: 0
 Conc: N.D.



#7 delta-BHC
 R.T.: 0.000 min
 Exp R.T. : 6.241 min
 Response: 0
 Conc: N.D.

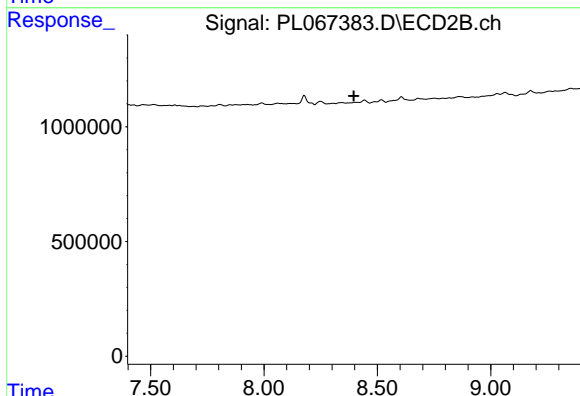


#7 delta-BHC
 R.T.: 7.003 min
 Delta R.T.: -0.026 min
 Response: 1047263
 Conc: 0.89 ng/ml

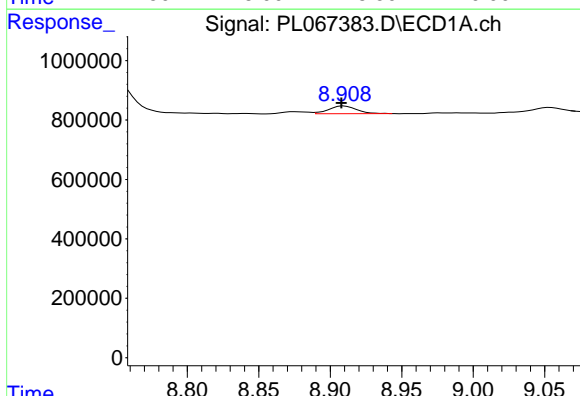


#9 Endosulfan I
 R.T.: 7.319 min
 Delta R.T.: 0.012 min
 Response: 767064
 Conc: 1.14 ng/ml

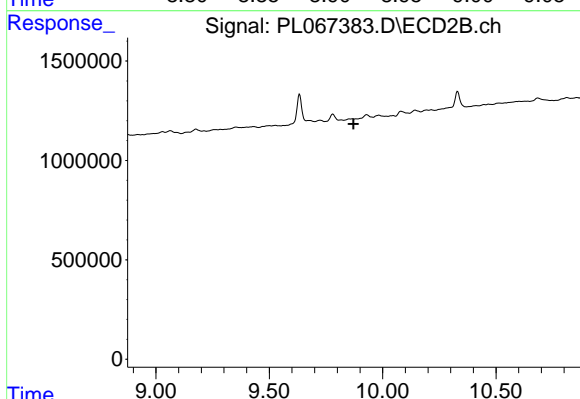
Instrument :
 ECD_L
 ClientSampled :



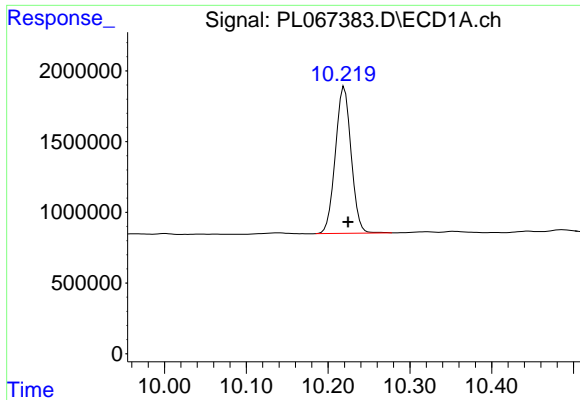
#9 Endosulfan I
 R.T.: 0.000 min
 Exp R.T. : 8.397 min
 Response: 0
 Conc: N.D.



#20 Methoxychlor
 R.T.: 8.910 min
 Delta R.T.: 0.002 min
 Response: 349343
 Conc: 0.98 ng/ml



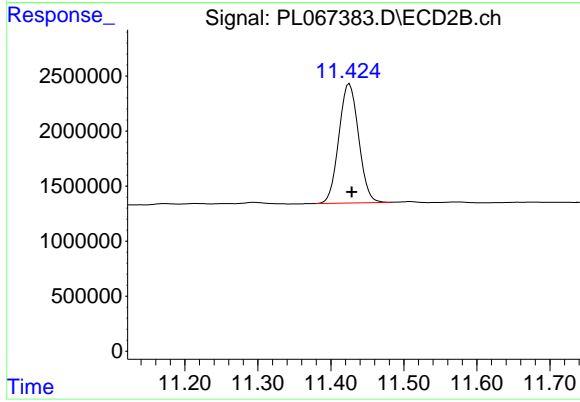
#20 Methoxychlor
 R.T.: 0.000 min
 Exp R.T. : 9.872 min
 Response: 0
 Conc: N.D.



#28 Decachlorobiphenyl

R.T.: 10.220 min
Delta R.T.: -0.004 min
Response: 13897575
Conc: 19.61 ng/ml

Instrument :
ECD_L
ClientSampleId :



#28 Decachlorobiphenyl

R.T.: 11.426 min
Delta R.T.: -0.003 min
Response: 20314061
Conc: 20.39 ng/ml