

Data Path : Z:\pestpcbsrv\HPCHEM1\ECD\_L\Data\PL061322\  
 Data File : PL075735.D  
 Signal(s) : Signal #1: ECD1A.ch Signal #2: ECD2B.ch  
 Acq On : 13 Jun 2022 17:37  
 Operator : AR\AJ  
 Sample : PB145506BL  
 Misc :  
 ALS Vial : 19 Sample Multiplier: 1

Instrument :  
 ECD\_L  
 ClientSampleId :  
 PB145506BL

Integration File signal 1: autoint1.e  
 Integration File signal 2: autoint2.e  
 Quant Time: Jun 13 23:21:35 2022  
 Quant Method : Z:\pestpcbsrv\HPCHEM1\ECD\_L\methods\PL060622.M  
 Quant Title : GC Extractables  
 QLast Update : Tue Jun 07 02:04:29 2022  
 Response via : Initial Calibration  
 Integrator: ChemStation

Volume Inj. : 1 µl  
 Signal #1 Phase : ZB-MR2 Signal #2 Phase: ZB-MR1  
 Signal #1 Info : 30M x 0.32mm x0.2 Signal #2 Info : 30M x 0.32mm x0.5µm

Compound	RT#1	RT#2	Resp#1	Resp#2	ng/ml	ng/ml
-----						
System Monitoring Compounds						
1) SA Tetrachlo...	5.642	4.637	12903197	31255151	19.119	18.624
28) SA Decachlor...	11.637	10.380	12315757	26358340	20.116	18.708

Target Compounds

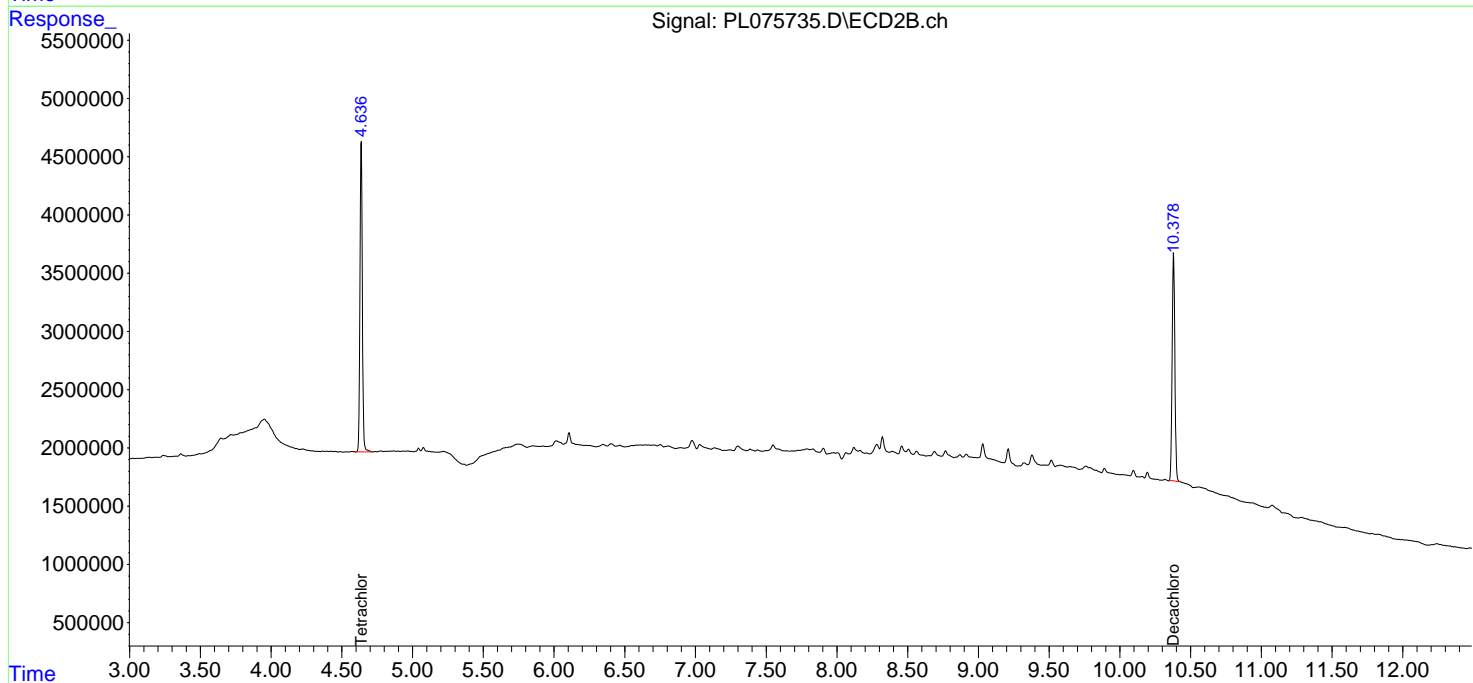
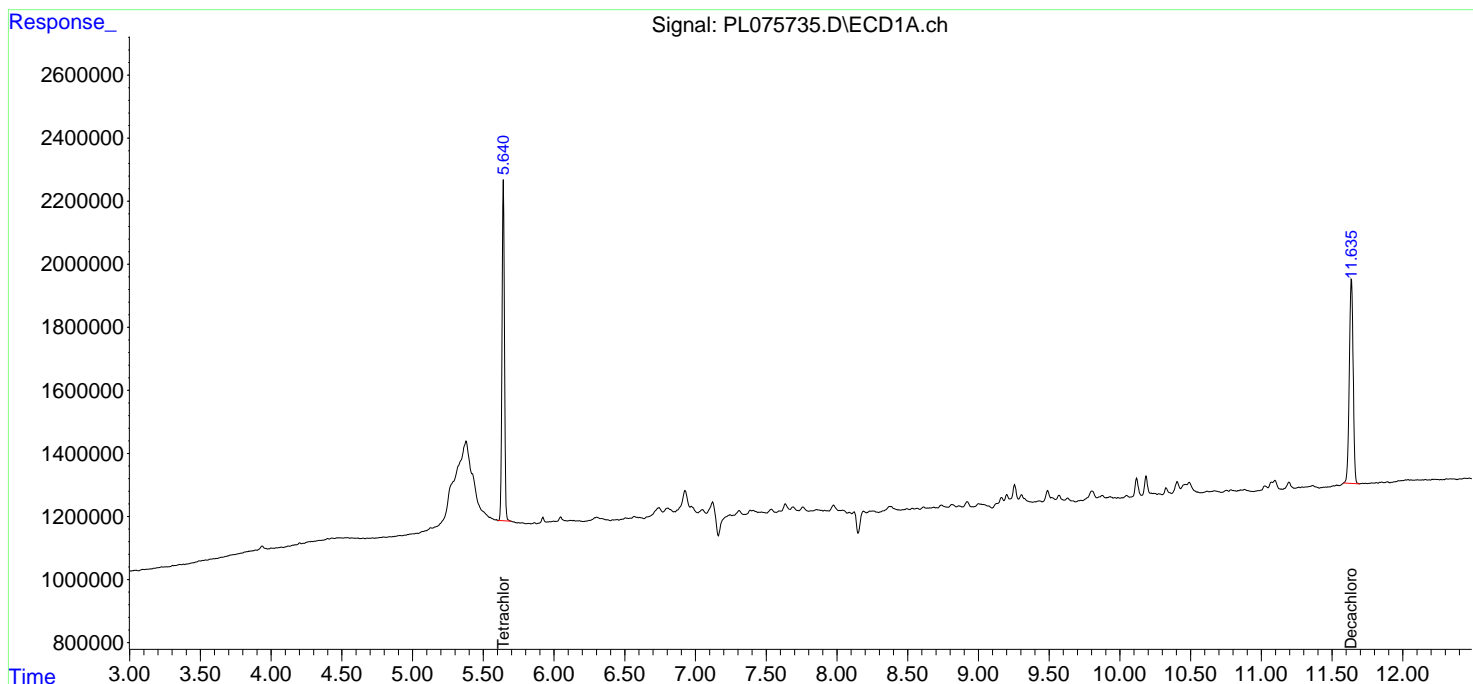
-----  
 (f)=RT Delta > 1/2 Window (#)=Amounts differ by > 25% (m)=manual int.

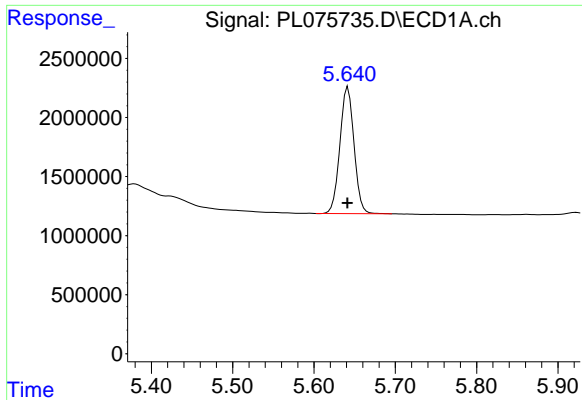
Data Path : Z:\pestpcbsrv\HPCHEM1\ECD\_L\Data\PL061322\  
 Data File : PL075735.D  
 Signal(s) : Signal #1: ECD1A.ch Signal #2: ECD2B.ch  
 Acq On : 13 Jun 2022 17:37  
 Operator : AR\AJ  
 Sample : PB145506BL  
 Misc :  
 ALS Vial : 19 Sample Multiplier: 1

Instrument :  
 ECD\_L  
 ClientSampleId :  
 PB145506BL

Integration File signal 1: autoint1.e  
 Integration File signal 2: autoint2.e  
 Quant Time: Jun 13 23:21:35 2022  
 Quant Method : Z:\pestpcbsrv\HPCHEM1\ECD\_L\methods\PL060622.M  
 Quant Title : GC Extractables  
 QLast Update : Tue Jun 07 02:04:29 2022  
 Response via : Initial Calibration  
 Integrator: ChemStation

Volume Inj. : 1 µl  
 Signal #1 Phase : ZB-MR2 Signal #2 Phase: ZB-MR1  
 Signal #1 Info : 30M x 0.32mm x0.2 Signal #2 Info : 30M x 0.32mm x0.5µm

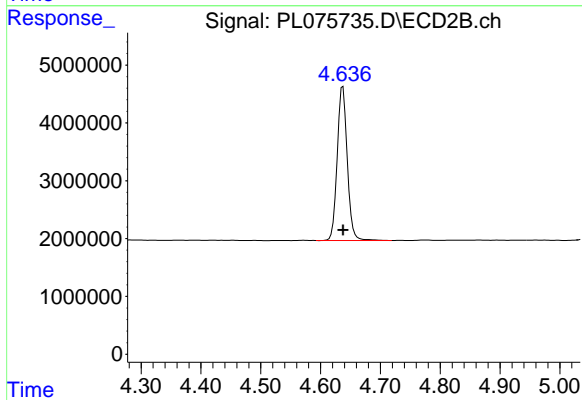




#1 Tetrachloro-m-xylene

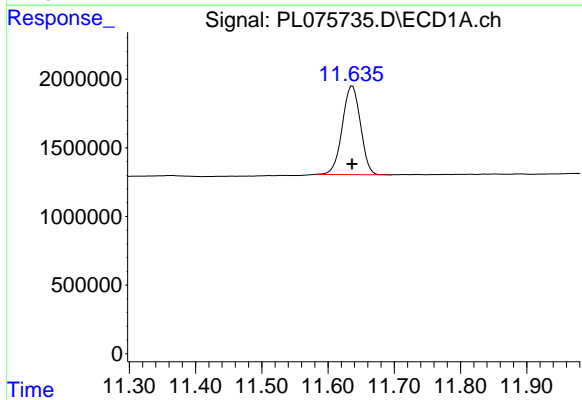
R.T.: 5.642 min  
 Delta R.T.: 0.000 min  
 Response: 12903197  
 Conc: 19.12 ng/ml

Instrument :  
 ECD\_L  
 ClientSampleId :  
 PB145506BL



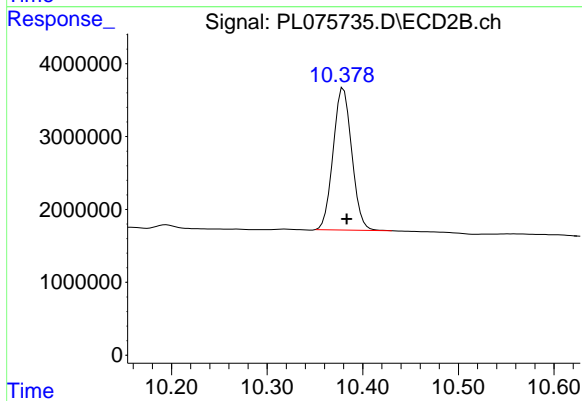
#1 Tetrachloro-m-xylene

R.T.: 4.637 min  
 Delta R.T.: 0.000 min  
 Response: 31255151  
 Conc: 18.62 ng/ml



#28 Decachlorobiphenyl

R.T.: 11.637 min  
 Delta R.T.: 0.000 min  
 Response: 12315757  
 Conc: 20.12 ng/ml



#28 Decachlorobiphenyl

R.T.: 10.380 min  
 Delta R.T.: -0.003 min  
 Response: 26358340  
 Conc: 18.71 ng/ml