

Data Path : Z:\pestpcbsrv\HPCHEM1\ECD\_L\Data\PL061322\  
 Data File : PL075748.D  
 Signal(s) : Signal #1: ECD1A.ch Signal #2: ECD2B.ch  
 Acq On : 13 Jun 2022 22:19  
 Operator : AR\AJ  
 Sample : N3304-02 10X  
 Misc :  
 ALS Vial : 30 Sample Multiplier: 1

**Instrument :**  
 ECD\_L  
**ClientSampleId :**  
 WC-14A-1A-10-G

**Manual Integrations**  
**APPROVED**

Reviewed By :Abdul Mirza 06/14/2022  
 Supervised By :Ankita Jodhani 06/14/2022

Integration File signal 1: autoint1.e  
 Integration File signal 2: autoint2.e  
 Quant Time: Jun 13 23:24:23 2022  
 Quant Method : Z:\pestpcbsrv\HPCHEM1\ECD\_L\methods\PL060622.M  
 Quant Title : GC Extractables  
 QLast Update : Tue Jun 07 02:04:29 2022  
 Response via : Initial Calibration  
 Integrator: ChemStation

Volume Inj. : 1 µl  
 Signal #1 Phase : ZB-MR2 Signal #2 Phase: ZB-MR1  
 Signal #1 Info : 30M x 0.32mm x0.2 Signal #2 Info : 30M x 0.32mm x0.5µm

Compound	RT#1	RT#2	Resp#1	Resp#2	ng/ml	ng/ml
-----						
System Monitoring Compounds						
1) SA Tetrachlo...	5.641	4.636	1071530	1592227	1.588	0.949m#
28) SA Decachlor...	11.633	10.381	1858885	3109779	3.036m	2.207m#
Target Compounds						
16) A 4,4'-DDD	9.199	8.205	768932	1386902	1.405	1.055
-----						

(f)=RT Delta > 1/2 Window (#)=Amounts differ by > 25% (m)=manual int.

Data Path : Z:\pestpcbsrv\HPCHEM1\ECD\_L\Data\PL061322\  
 Data File : PL075748.D  
 Signal(s) : Signal #1: ECD1A.ch Signal #2: ECD2B.ch  
 Acq On : 13 Jun 2022 22:19  
 Operator : AR\AJ  
 Sample : N3304-02 10X  
 Misc :  
 ALS Vial : 30 Sample Multiplier: 1

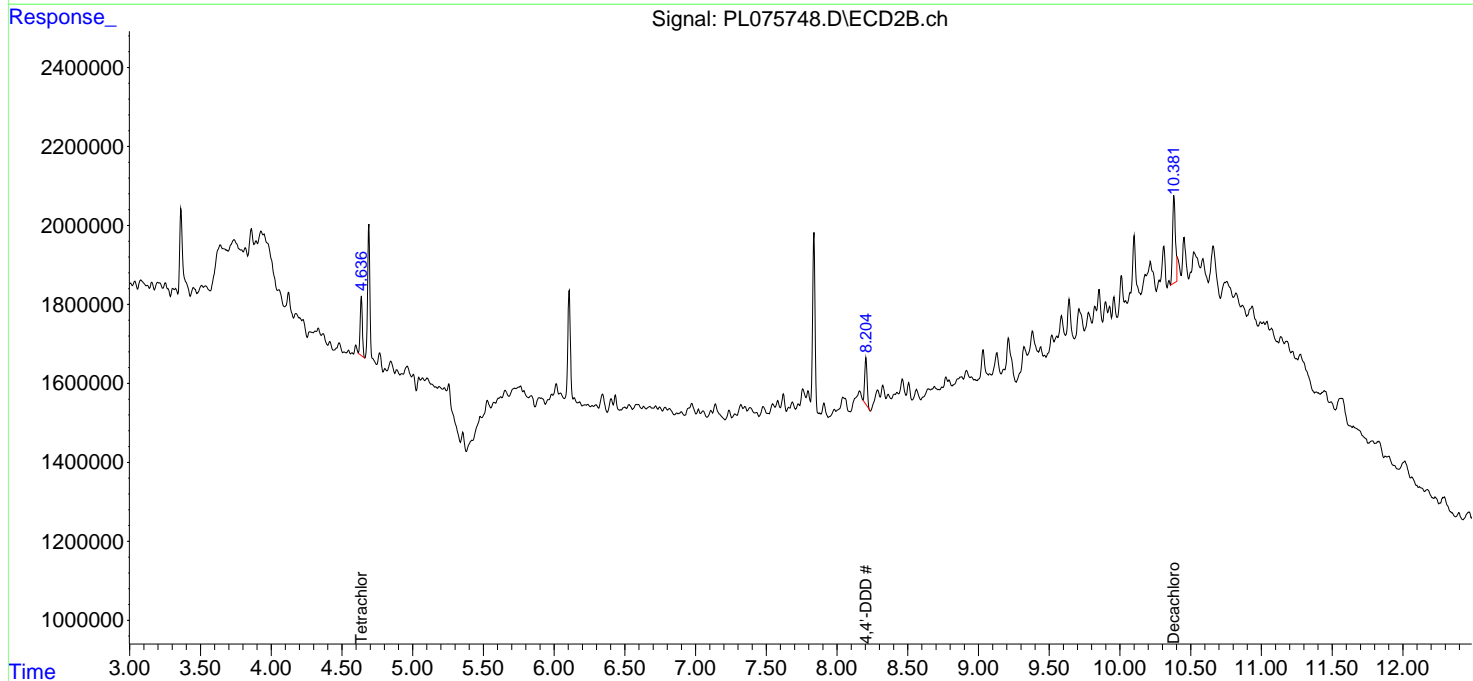
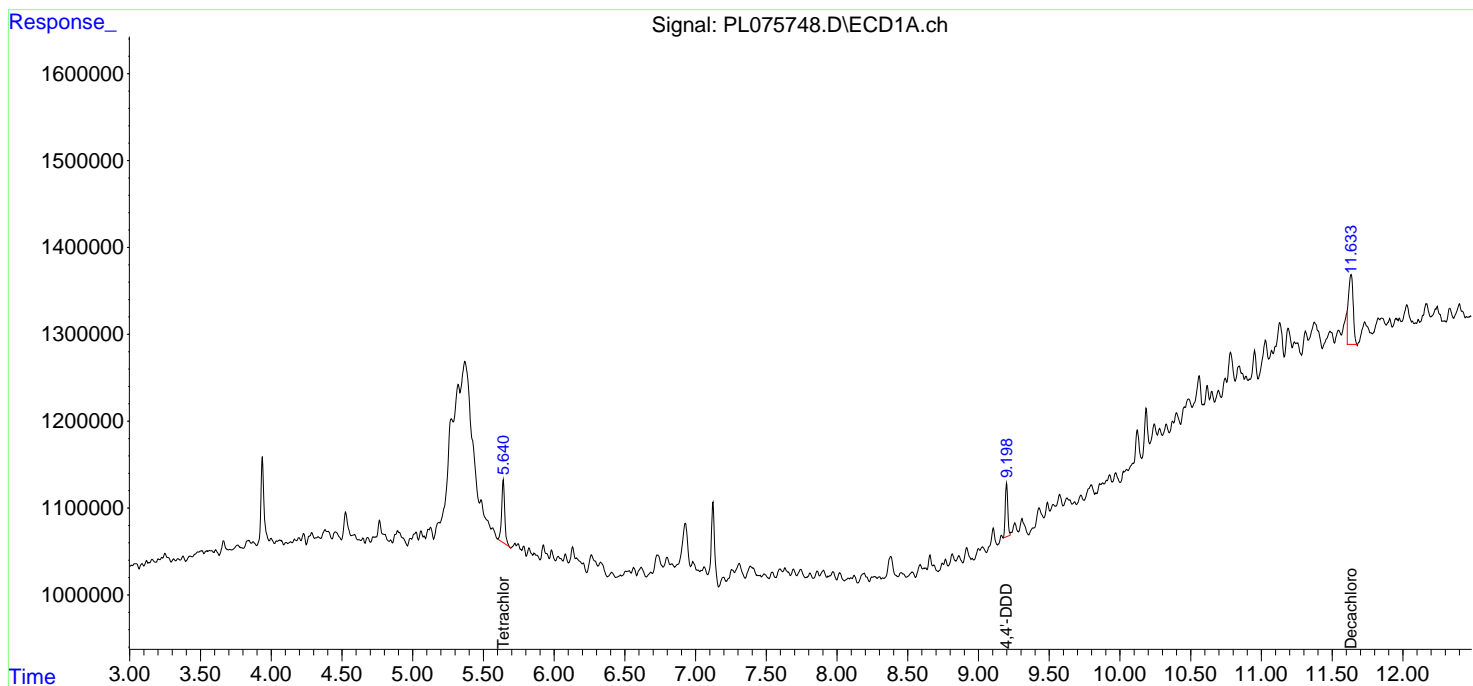
**Instrument :**  
 ECD\_L  
**ClientSampleId :**  
 WC-14A-1A-10-G

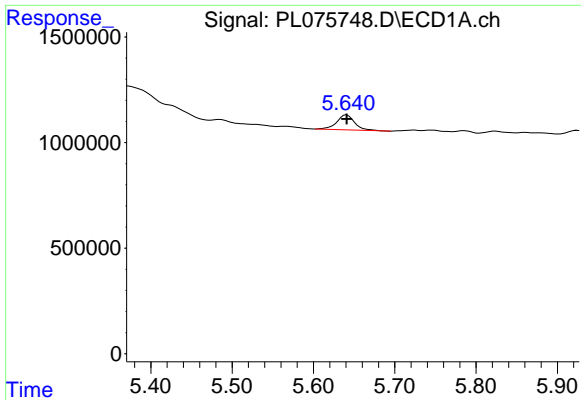
**Manual Integrations**  
**APPROVED**

Reviewed By :Abdul Mirza 06/14/2022  
 Supervised By :Ankita Jodhani 06/14/2022

Integration File signal 1: autoint1.e  
 Integration File signal 2: autoint2.e  
 Quant Time: Jun 13 23:24:23 2022  
 Quant Method : Z:\pestpcbsrv\HPCHEM1\ECD\_L\methods\PL060622.M  
 Quant Title : GC Extractables  
 QLast Update : Tue Jun 07 02:04:29 2022  
 Response via : Initial Calibration  
 Integrator: ChemStation

Volume Inj. : 1 µl  
 Signal #1 Phase : ZB-MR2 Signal #2 Phase: ZB-MR1  
 Signal #1 Info : 30M x 0.32mm x0.2 Signal #2 Info : 30M x 0.32mm x0.5µm





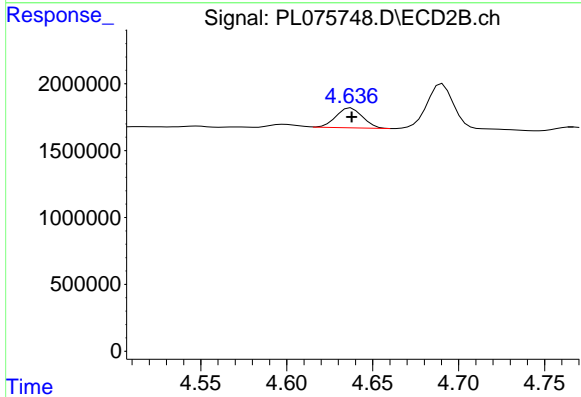
#1 Tetrachloro-m-xylene

R.T.: 5.641 min  
 Delta R.T.: 0.000 min  
 Response: 1071530  
 Conc: 1.59 ng/ml

Instrument :  
 ECD\_L  
 ClientSampleId :  
 WC-14A-1A-10-G

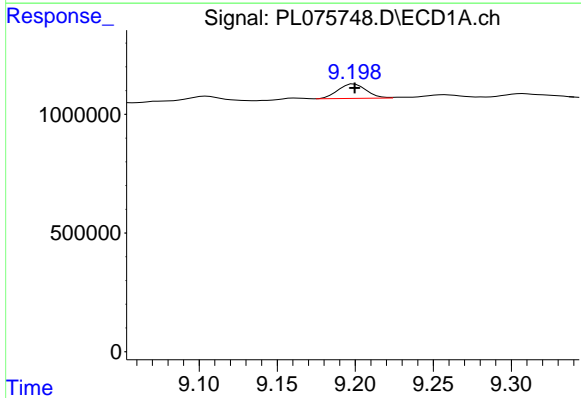
Manual Integrations  
 APPROVED

Reviewed By :Abdul Mirza 06/14/2022  
 Supervised By :Ankita Jodhani 06/14/2022



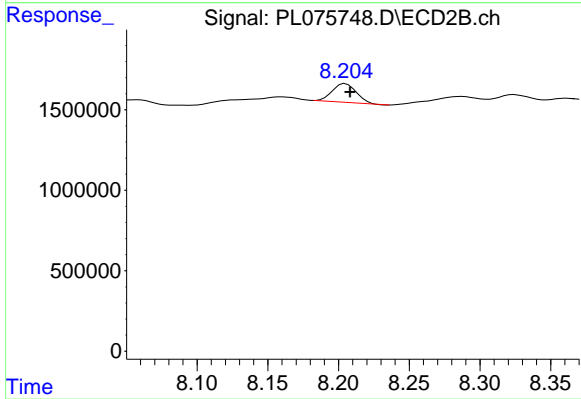
#1 Tetrachloro-m-xylene

R.T.: 4.636 min  
 Delta R.T.: -0.002 min  
 Response: 1592227  
 Conc: 0.95 ng/ml m



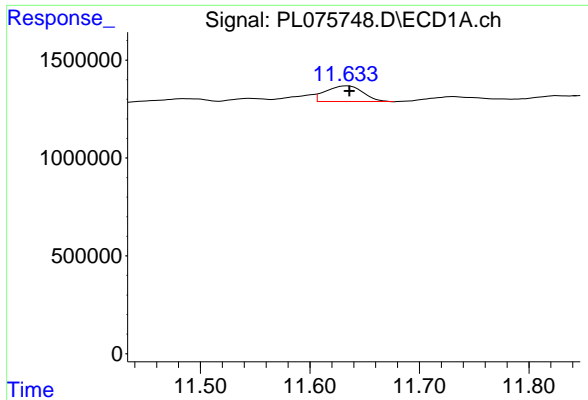
#16 4,4'-DDD

R.T.: 9.199 min  
 Delta R.T.: 0.000 min  
 Response: 768932  
 Conc: 1.41 ng/ml



#16 4,4'-DDD

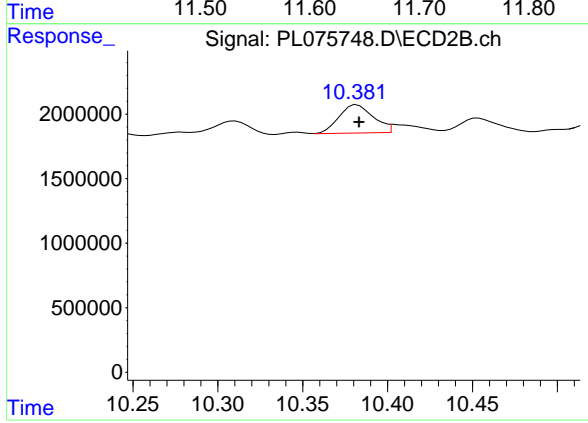
R.T.: 8.205 min  
 Delta R.T.: -0.003 min  
 Response: 1386902  
 Conc: 1.05 ng/ml



#28 Decachlorobiphenyl  
 R.T.: 11.633 min  
 Delta R.T.: -0.003 min  
 Response: 1858885  
 Conc: 3.04 ng/ml

Instrument : ECD\_L  
 ClientSampleId : WC-14A-1A-10-G

**Manual Integrations**  
**APPROVED**  
 Reviewed By :Abdul Mirza 06/14/2022  
 Supervised By :Ankita Jodhani 06/14/2022



#28 Decachlorobiphenyl  
 R.T.: 10.381 min  
 Delta R.T.: -0.003 min  
 Response: 3109779  
 Conc: 2.21 ng/ml m