

Data Path : Z:\pestpcbsrv\HPCHEM1\ECD\_L\Data\PL061418\  
 Data File : PL036925.D  
 Signal(s) : Signal #1: ECD1A.ch Signal #2: ECD2B.ch  
 Acq On : 14 Jun 2018 17:01  
 Operator : UA\AJ  
 Sample : PTOXICC050  
 Misc :  
 ALS Vial : 19 Sample Multiplier: 1

Instrument :  
 ECD\_L  
 ClientSampleId :

Integration File signal 1: autoint1.e  
 Integration File signal 2: autoint2.e  
 Quant Time: Jun 14 17:12:05 2018  
 Quant Method : Z:\PESTPCBSRV\HPCHEM1\ECD\_L\methods\LTX061418.M  
 Quant Title : GC Extractables  
 QLast Update : Thu Jun 14 17:09:15 2018  
 Response via : Initial Calibration  
 Integrator: ChemStation

Volume Inj. : 2 µl  
 Signal #1 Phase : Rtx-CLPesticide 1 Signal #2 Phase: Rtx-CLPesticide 1  
 Signal #1 Info : 30M x 0.32mm x0.3 Signal #2 Info : 30M x 0.32mm x 0.25µm

Compound	RT#1	RT#2	Resp#1	Resp#2	ng/ml	ng/ml
-----						
System Monitoring Compounds						
1) SA Tetrachlo...	3.341	3.937	36738987	12726257	5.153	4.817
7) SA Decachlor...	8.026	8.950	38313429	14682920	6.005	5.965
Target Compounds						
5) Toxaphene-4	6.870f	0.000	8040794	0	210.289	N.D. #
6) Toxaphene-5	6.870	0.000	8040794	0	64.377	N.D. #
-----						

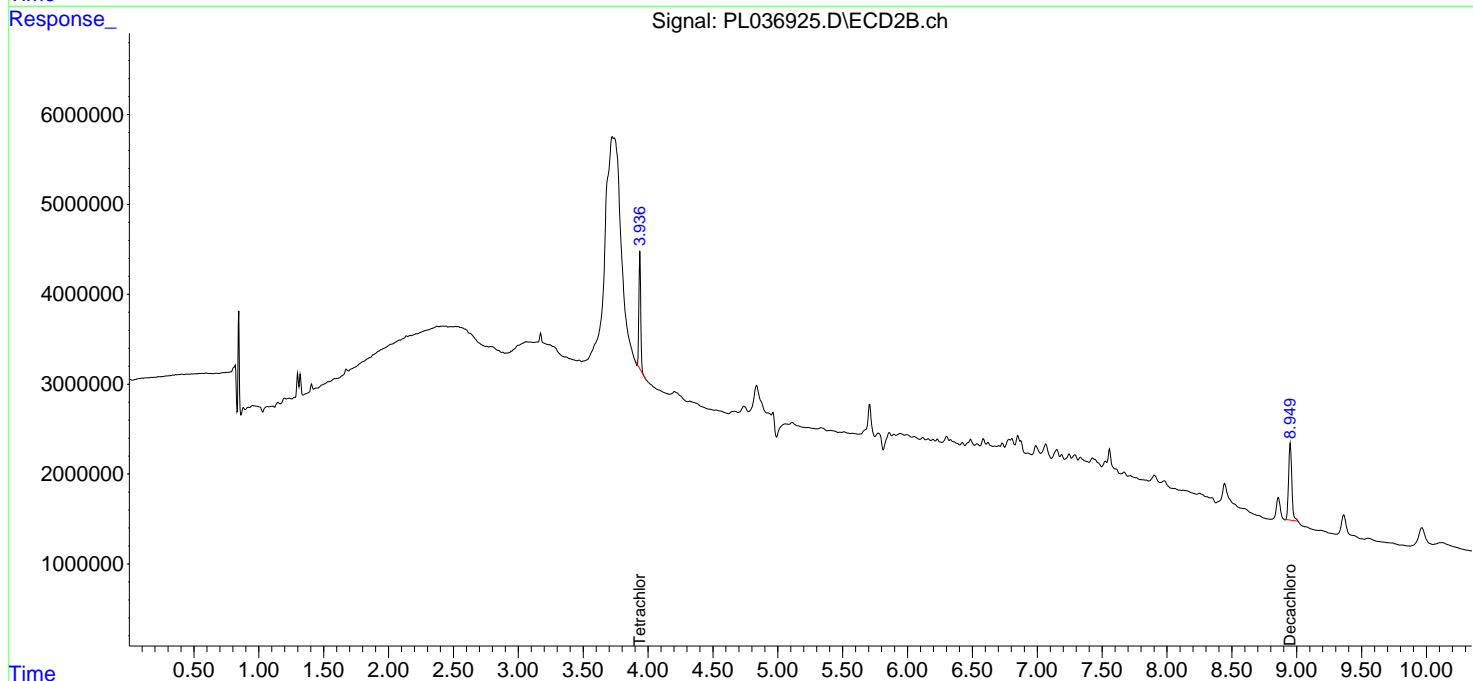
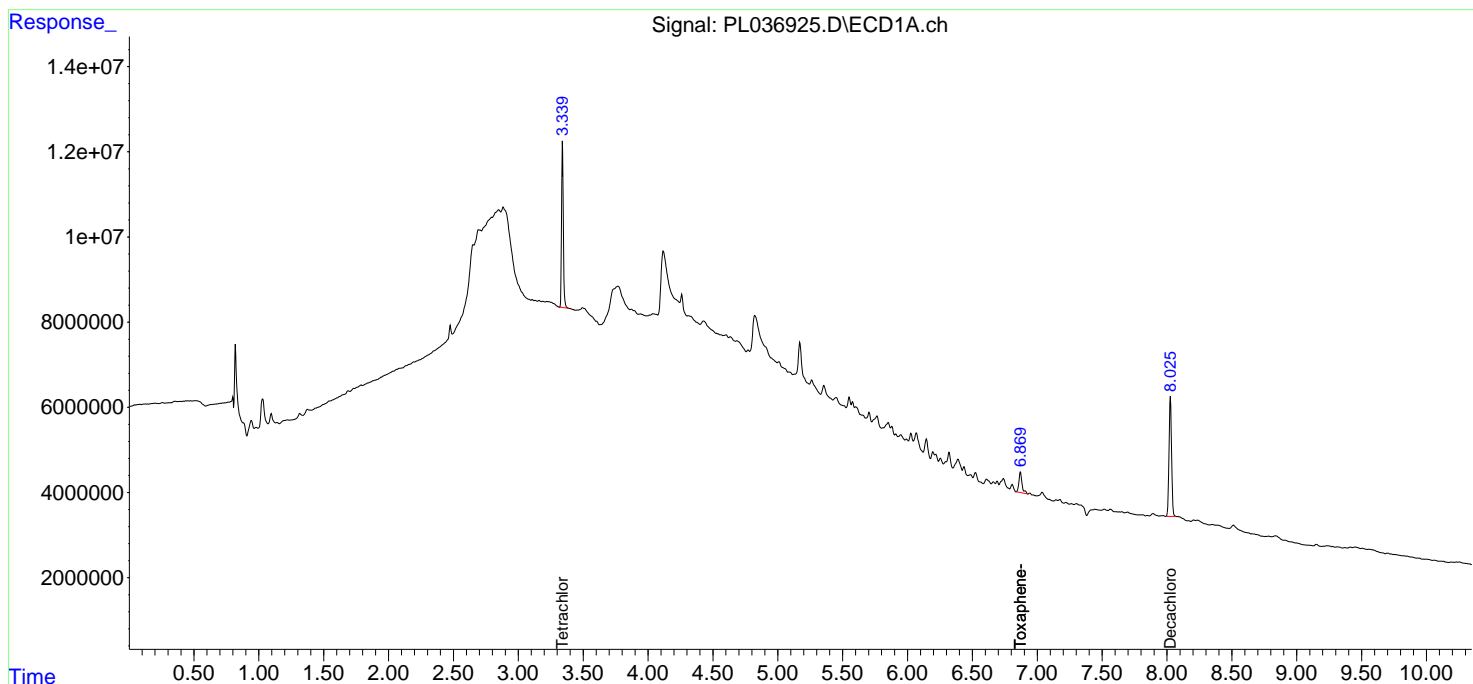
(f)=RT Delta > 1/2 Window (#)=Amounts differ by > 25% (m)=manual int.

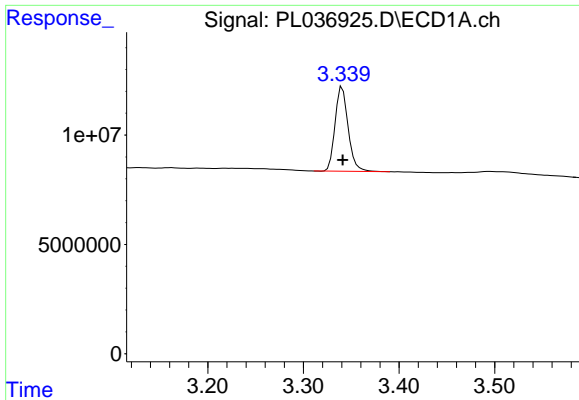
Data Path : Z:\pestpcbsrv\HPCHEM1\ECD\_L\Data\PL061418\  
 Data File : PL036925.D  
 Signal(s) : Signal #1: ECD1A.ch Signal #2: ECD2B.ch  
 Acq On : 14 Jun 2018 17:01  
 Operator : UA\AJ  
 Sample : PTOXICC050  
 Misc :  
 ALS Vial : 19 Sample Multiplier: 1

Instrument :  
 ECD\_L  
 ClientSampled :

Integration File signal 1: autoint1.e  
 Integration File signal 2: autoint2.e  
 Quant Time: Jun 14 17:12:05 2018  
 Quant Method : Z:\PESTPCBSRV\HPCHEM1\ECD\_L\methods\LTX061418.M  
 Quant Title : GC Extractables  
 QLast Update : Thu Jun 14 17:09:15 2018  
 Response via : Initial Calibration  
 Integrator: ChemStation

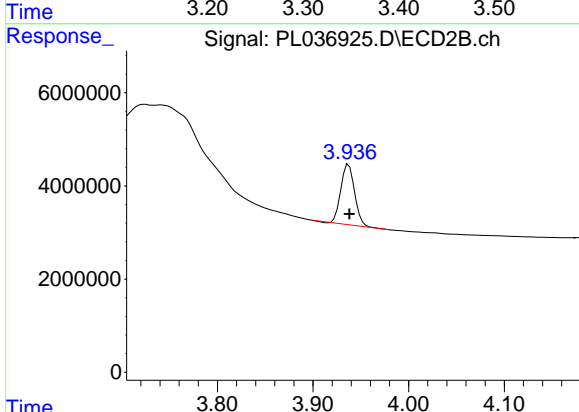
Volume Inj. : 2 µl  
 Signal #1 Phase : Rtx-CLPesticide 1 Signal #2 Phase: Rtx-CLPesticide 1  
 Signal #1 Info : 30M x 0.32mm x 0.3 Signal #2 Info : 30M x 0.32mm x 0.25µm



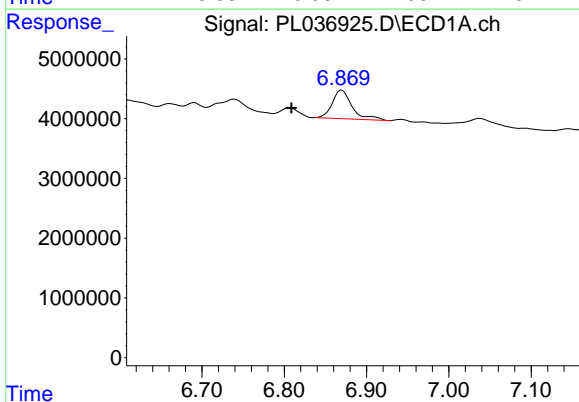


#1 Tetrachloro-m-xylene  
 R.T.: 3.341 min  
 Delta R.T.: 0.000 min  
 Response: 36738987  
 Conc: 5.15 ng/ml

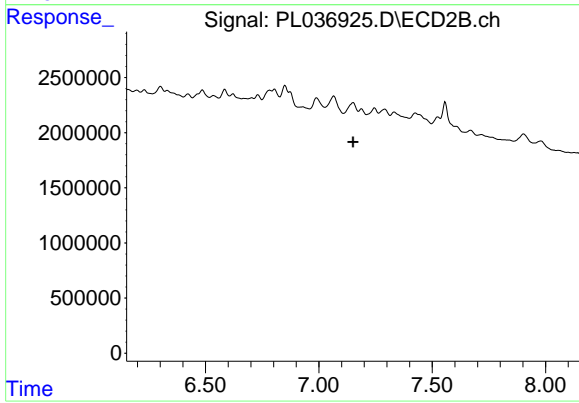
Instrument :  
 ECD\_L  
 ClientSampled :



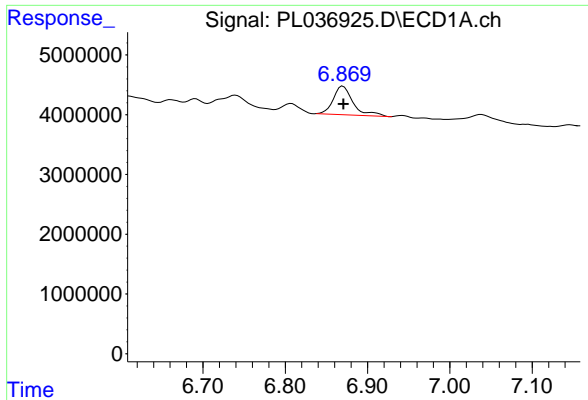
#1 Tetrachloro-m-xylene  
 R.T.: 3.937 min  
 Delta R.T.: 0.000 min  
 Response: 12726257  
 Conc: 4.82 ng/ml



#5 Toxaphene-4  
 R.T.: 6.870 min  
 Delta R.T.: 0.062 min  
 Response: 8040794  
 Conc: 210.29 ng/ml



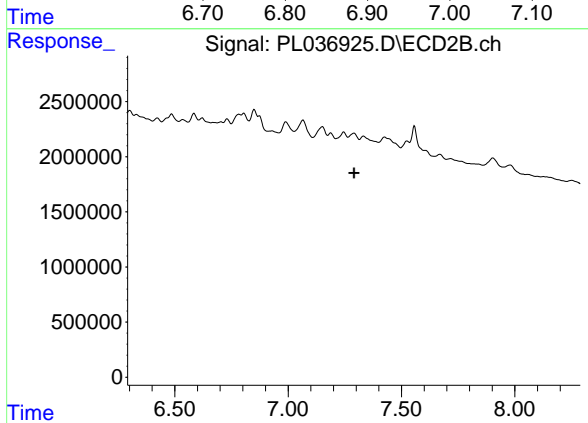
#5 Toxaphene-4  
 R.T.: 0.000 min  
 Exp R.T. : 7.151 min  
 Response: 0  
 Conc: N.D.



#6 Toxaphene-5

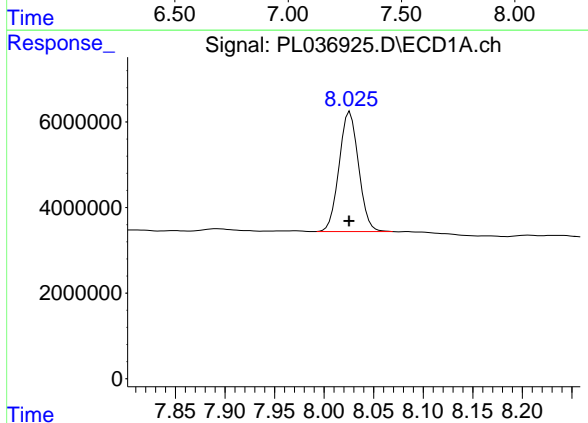
R.T.: 6.870 min  
 Delta R.T.: 0.000 min  
 Response: 8040794  
 Conc: 64.38 ng/ml

Instrument :  
 ECD\_L  
 ClientSampleId :



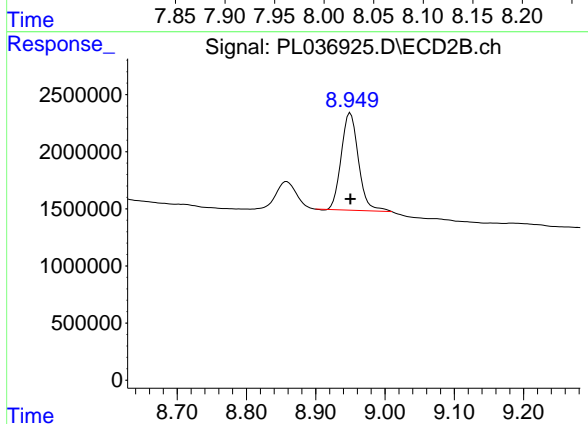
#6 Toxaphene-5

R.T.: 0.000 min  
 Exp R.T. : 7.291 min  
 Response: 0  
 Conc: N.D.



#7 Decachlorobiphenyl

R.T.: 8.026 min  
 Delta R.T.: 0.000 min  
 Response: 38313429  
 Conc: 6.00 ng/ml



#7 Decachlorobiphenyl

R.T.: 8.950 min  
 Delta R.T.: 0.000 min  
 Response: 14682920  
 Conc: 5.97 ng/ml