

Data Path : Z:\pestpcbsrv\HPCHEM1\ECD\_L\Data\PL061418\  
 Data File : PL036936.D  
 Signal(s) : Signal #1: ECD1A.ch Signal #2: ECD2B.ch  
 Acq On : 14 Jun 2018 19:35  
 Operator : UA\AJ  
 Sample : J3502-01  
 Misc :  
 ALS Vial : 27 Sample Multiplier: 1

Instrument :  
 ECD\_L  
 ClientSampleId :

Integration File signal 1: autoint1.e  
 Integration File signal 2: autoint2.e  
 Quant Time: Jun 15 02:35:32 2018  
 Quant Method : Z:\PESTPCBSRV\HPCHEM1\ECD\_L\methods\PL061418.M  
 Quant Title : GC Extractables  
 QLast Update : Thu Jun 14 16:13:31 2018  
 Response via : Initial Calibration  
 Integrator: ChemStation

Volume Inj. : 2 µl  
 Signal #1 Phase : ZB-MR1 Signal #2 Phase: ZB-MR2  
 Signal #1 Info : 30M x 0.32mm x0.5 Signal #2 Info : 30M x 0.32mm x0.25µm

Compound	RT#1	RT#2	Resp#1	Resp#2	ng/ml	ng/ml
-----						
System Monitoring Compounds						
1) SA Tetrachlo...	3.341	3.938	109.8E6	24474455	15.440	9.573 #
28) SA Decachlor...	8.025	8.952	97914029	47949564	15.050	18.797
Target Compounds						
2) A alpha-BHC	3.725f	4.340	5963348	7211670	0.533	2.012 #
6) B beta-BHC	4.264f	0.000	8098874	0	1.896	N.D. #
9) A Endosulfan I	0.000	6.159	0	31426672	N.D.	12.804 #
10) B gamma-Chl...	5.170f	6.006	12389600	225.8E6	1.473	81.177 #
11) B alpha-Chl...	0.000	6.159f	0	31426672	N.D.	11.426 #
25) Chlordane-3	5.170	6.006	12389600	225.8E6	13.180	603.580 #
26) Chlordane-4	0.000	6.159	0	31426672	N.D.	70.583 #
-----						

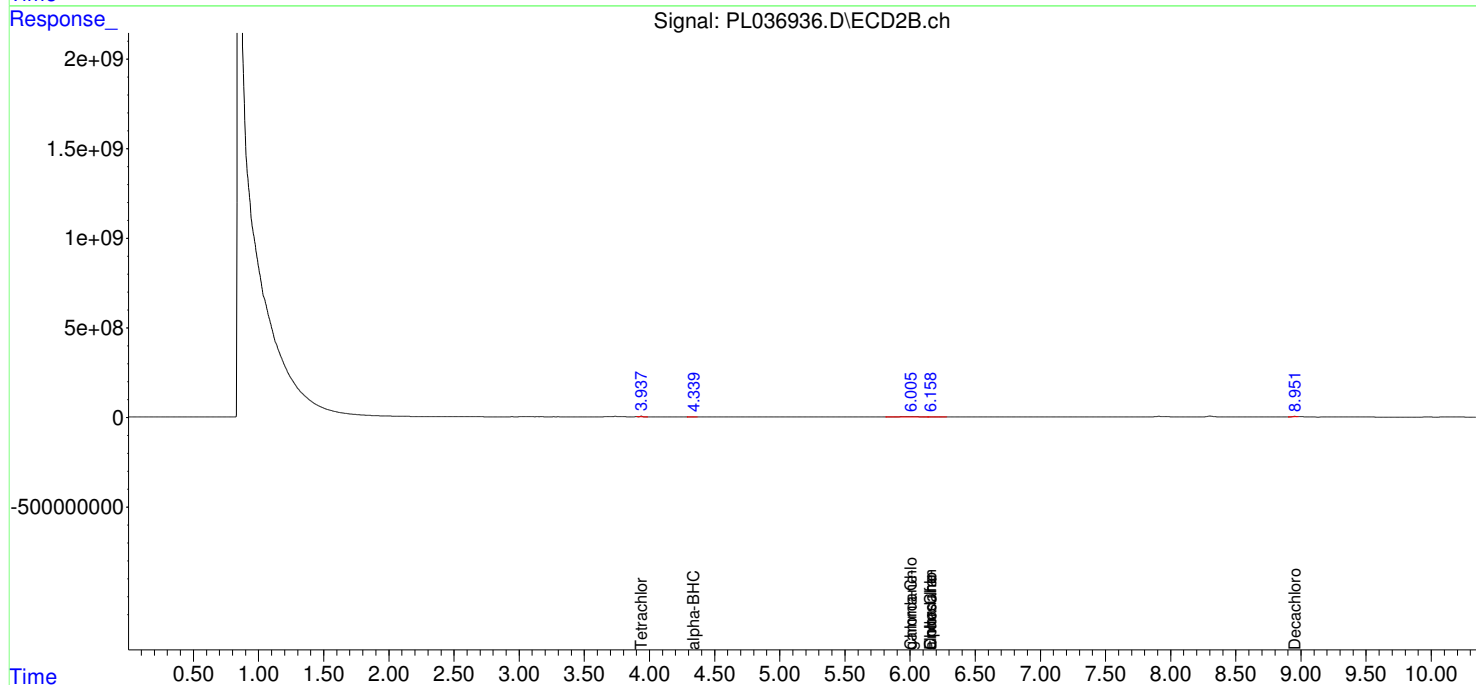
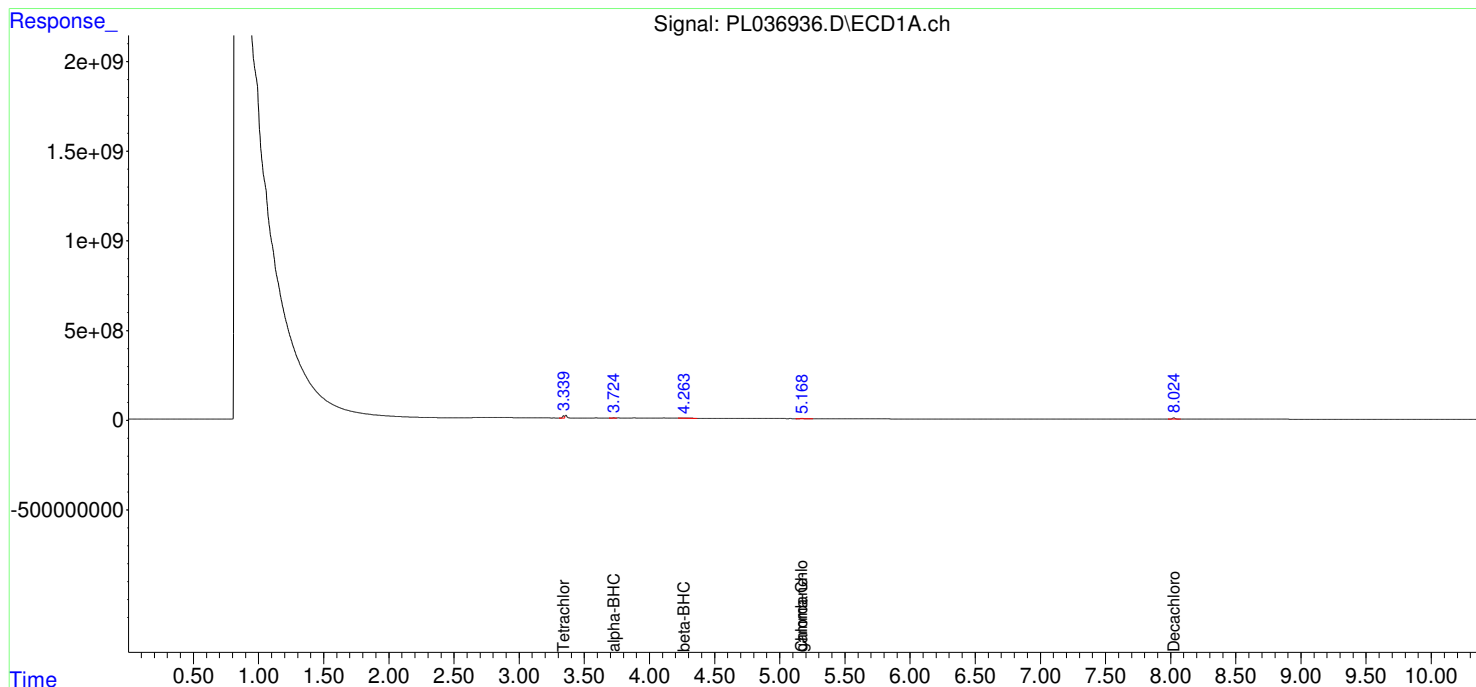
(f)=RT Delta > 1/2 Window (#)=Amounts differ by > 25% (m)=manual int.

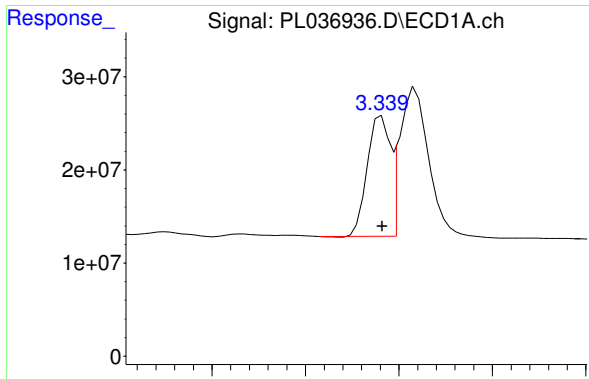
Data Path : Z:\pestpcbsrv\HPCHEM1\ECD\_L\Data\PL061418\  
 Data File : PL036936.D  
 Signal(s) : Signal #1: ECD1A.ch Signal #2: ECD2B.ch  
 Acq On : 14 Jun 2018 19:35  
 Operator : UA\AJ  
 Sample : J3502-01  
 Misc :  
 ALS Vial : 27 Sample Multiplier: 1

Instrument :  
 ECD\_L  
 ClientSampleId :

Integration File signal 1: autoint1.e  
 Integration File signal 2: autoint2.e  
 Quant Time: Jun 15 02:35:32 2018  
 Quant Method : Z:\PESTPCBSRV\HPCHEM1\ECD\_L\methods\PL061418.M  
 Quant Title : GC Extractables  
 QLast Update : Thu Jun 14 16:13:31 2018  
 Response via : Initial Calibration  
 Integrator: ChemStation

Volume Inj. : 2 µl  
 Signal #1 Phase : ZB-MR1 Signal #2 Phase: ZB-MR2  
 Signal #1 Info : 30M x 0.32mm x0.5 Signal #2 Info : 30M x 0.32mm x0.25µm

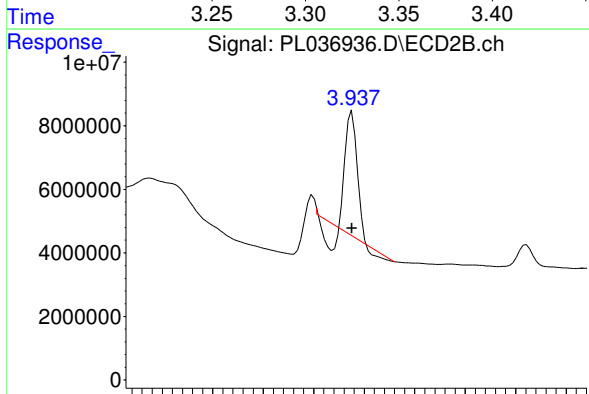




#1 Tetrachloro-m-xylene

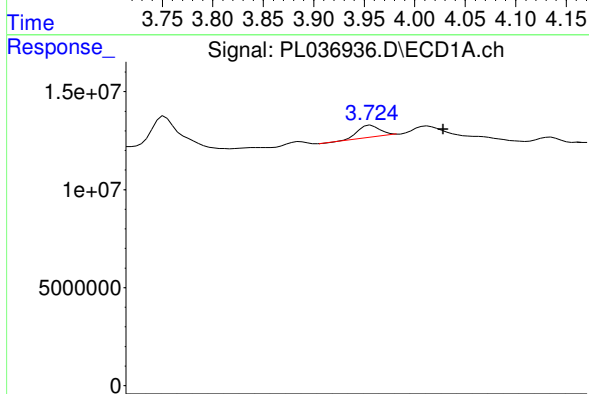
R.T.: 3.341 min  
 Delta R.T.: 0.000 min  
 Response: 109795156  
 Conc: 15.44 ng/ml

Instrument :  
 ECD\_L  
 ClientSampleId :



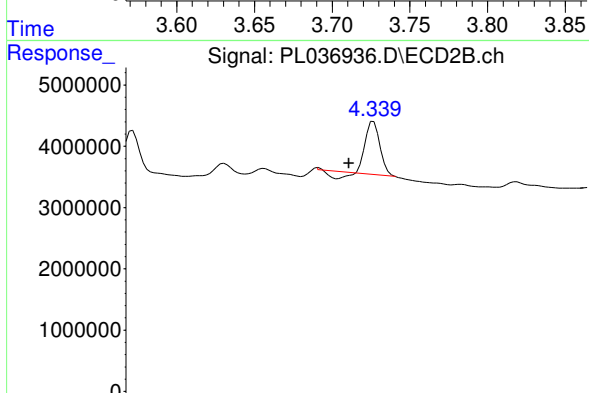
#1 Tetrachloro-m-xylene

R.T.: 3.938 min  
 Delta R.T.: 0.000 min  
 Response: 24474455  
 Conc: 9.57 ng/ml



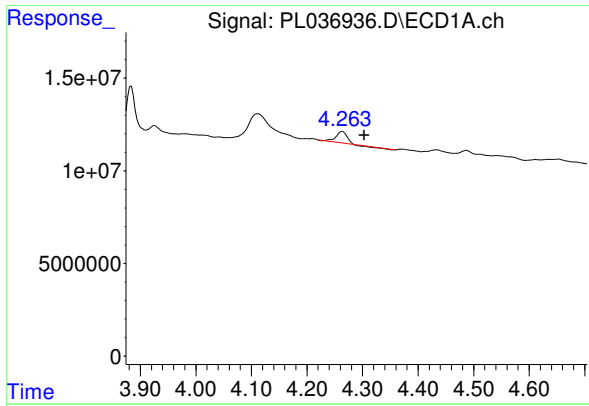
#2 alpha-BHC

R.T.: 3.725 min  
 Delta R.T.: -0.046 min  
 Response: 5963348  
 Conc: 0.53 ng/ml



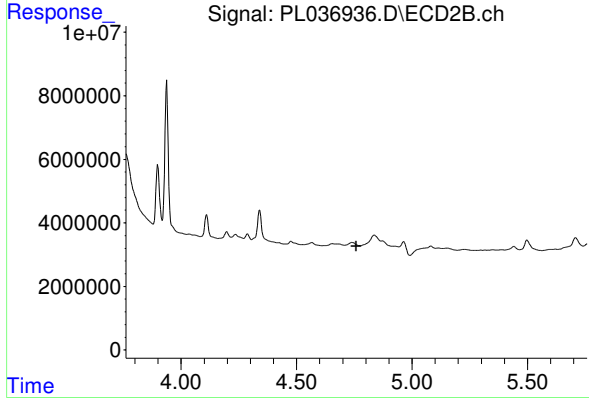
#2 alpha-BHC

R.T.: 4.340 min  
 Delta R.T.: 0.023 min  
 Response: 7211670  
 Conc: 2.01 ng/ml

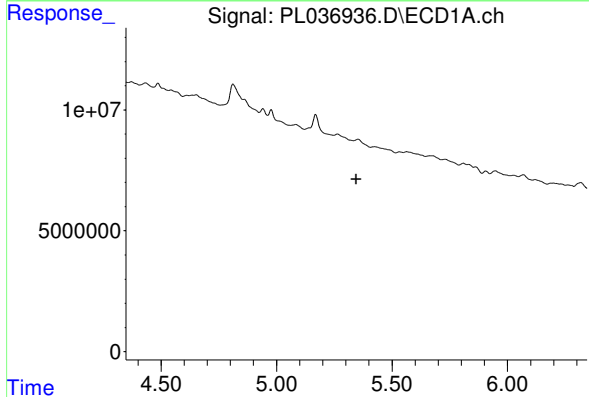


#6 beta-BHC  
 R.T.: 4.264 min  
 Delta R.T.: -0.038 min  
 Response: 8098874  
 Conc: 1.90 ng/ml

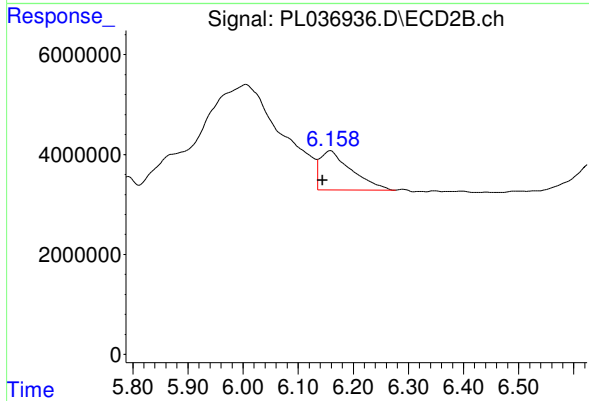
Instrument :  
 ECD\_L  
 ClientSampleId :



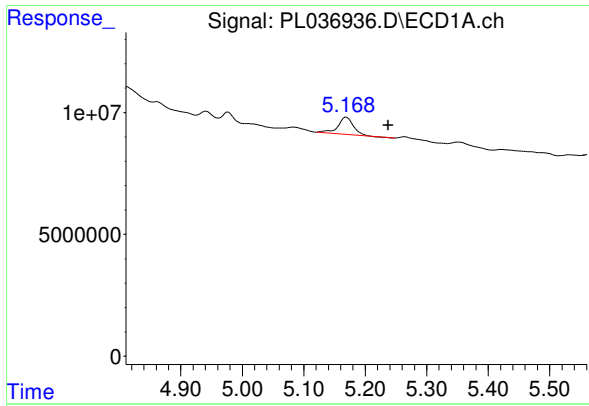
#6 beta-BHC  
 R.T.: 0.000 min  
 Exp R.T. : 4.758 min  
 Response: 0  
 Conc: N.D.



#9 Endosulfan I  
 R.T.: 0.000 min  
 Exp R.T. : 5.346 min  
 Response: 0  
 Conc: N.D.



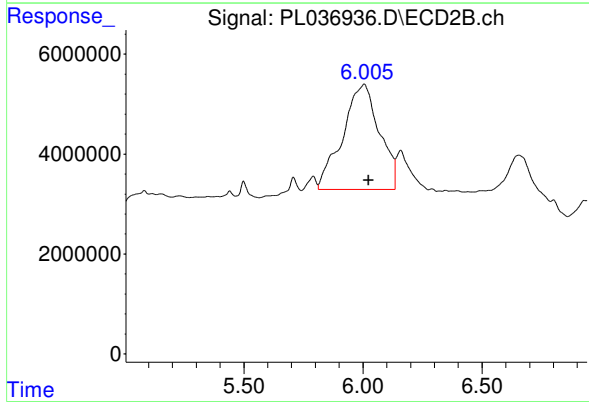
#9 Endosulfan I  
 R.T.: 6.159 min  
 Delta R.T.: 0.015 min  
 Response: 31426672  
 Conc: 12.80 ng/ml



#10 gamma-Chlordane

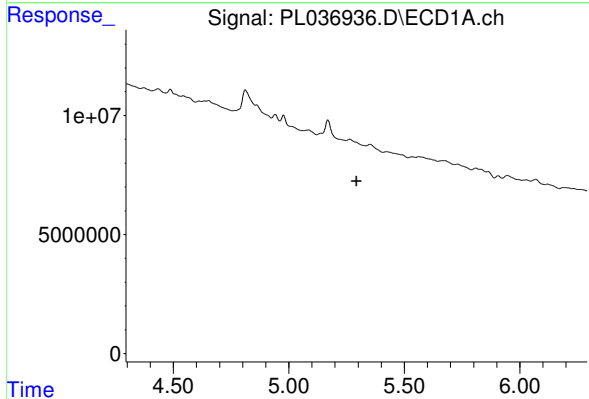
R.T.: 5.170 min  
 Delta R.T.: -0.067 min  
 Response: 12389600  
 Conc: 1.47 ng/ml

Instrument :  
 ECD\_L  
 ClientSampleId :



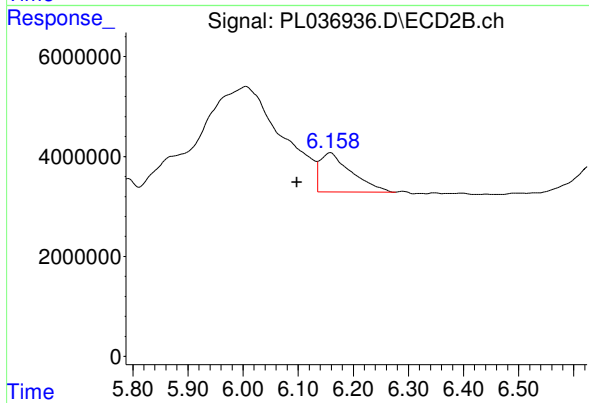
#10 gamma-Chlordane

R.T.: 6.006 min  
 Delta R.T.: -0.018 min  
 Response: 225803093  
 Conc: 81.18 ng/ml



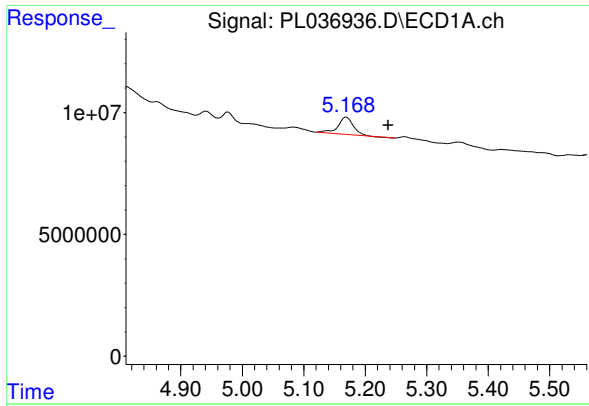
#11 alpha-Chlordane

R.T.: 0.000 min  
 Exp R.T. : 5.294 min  
 Response: 0  
 Conc: N.D.



#11 alpha-Chlordane

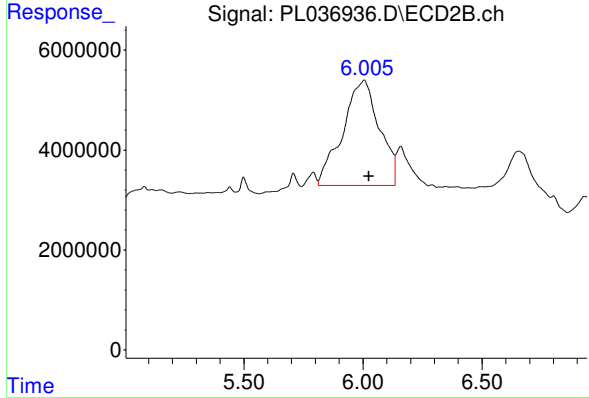
R.T.: 6.159 min  
 Delta R.T.: 0.062 min  
 Response: 31426672  
 Conc: 11.43 ng/ml



#25 Chlordane-3

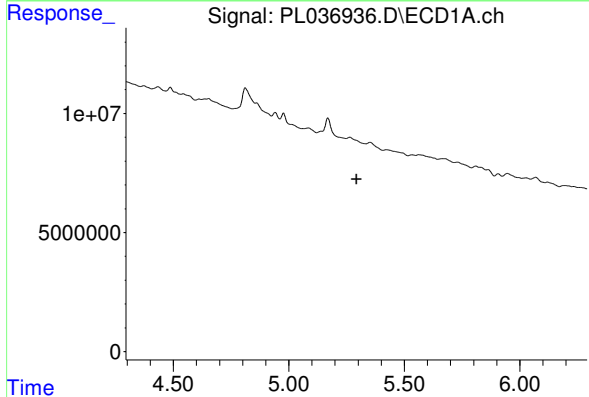
R.T.: 5.170 min  
 Delta R.T.: -0.068 min  
 Response: 12389600  
 Conc: 13.18 ng/ml

Instrument :  
 ECD\_L  
 ClientSampleId :



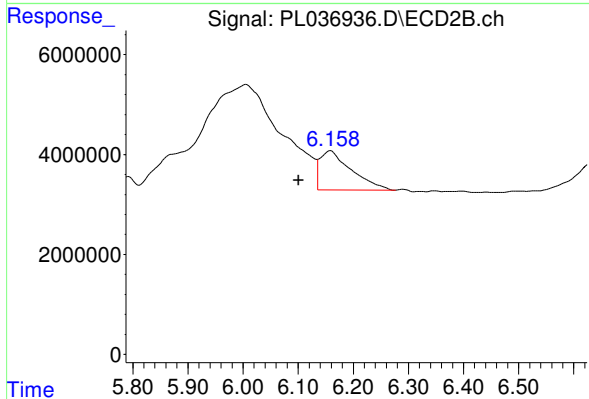
#25 Chlordane-3

R.T.: 6.006 min  
 Delta R.T.: -0.018 min  
 Response: 225803093  
 Conc: 603.58 ng/ml



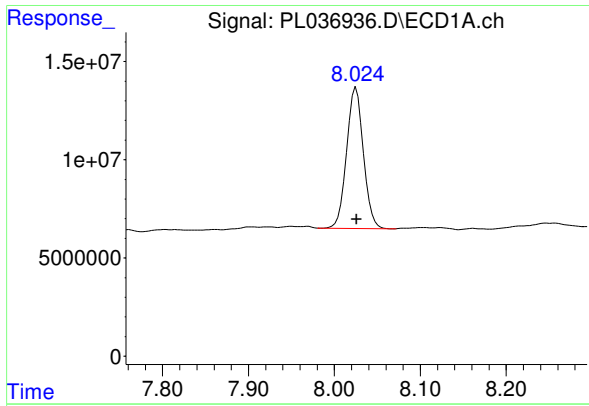
#26 Chlordane-4

R.T.: 0.000 min  
 Exp R.T. : 5.294 min  
 Response: 0  
 Conc: N.D.



#26 Chlordane-4

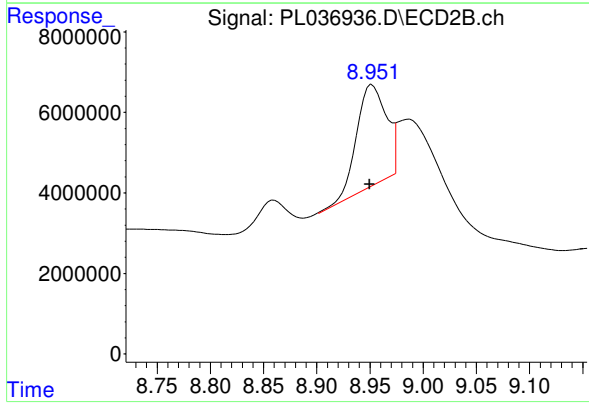
R.T.: 6.159 min  
 Delta R.T.: 0.059 min  
 Response: 31426672  
 Conc: 70.58 ng/ml



#28 Decachlorobiphenyl

R.T.: 8.025 min  
Delta R.T.: 0.000 min  
Response: 97914029  
Conc: 15.05 ng/ml

Instrument :  
ECD\_L  
ClientSampleId :



#28 Decachlorobiphenyl

R.T.: 8.952 min  
Delta R.T.: 0.003 min  
Response: 47949564  
Conc: 18.80 ng/ml