

Data Path : Z:\pestpcbsrv\HPCHEM1\ECD_L\Data\PL061421\
 Data File : PL067391.D
 Signal(s) : Signal #1: ECD1A.ch Signal #2: ECD2B.ch
 Acq On : 14 Jun 2021 10:01
 Operator : AR\AJ
 Sample : PB137073BL
 Misc :
 ALS Vial : 5 Sample Multiplier: 1

Instrument :
 ECD_L
 ClientSampleId :

Integration File signal 1: autoint1.e
 Integration File signal 2: autoint2.e
 Quant Time: Jun 14 13:12:35 2021
 Quant Method : Z:\pestpcbsrv\HPCHEM1\ECD_L\methods\PL061021.M
 Quant Title : GC Extractables
 QLast Update : Fri Jun 11 02:00:12 2021
 Response via : Initial Calibration
 Integrator: ChemStation

Volume Inj. : 1 µl
 Signal #1 Phase : ZB-MR2 Signal #2 Phase: ZB-MR1
 Signal #1 Info : 30M x 0.32mm x0.2 Signal #2 Info : 30M x 0.32mm x0.5µm

Compound	RT#1	RT#2	Resp#1	Resp#2	ng/ml	ng/ml

System Monitoring Compounds						
1) SA Tetrachlo...	4.480	5.529	11239732	18944228	20.444	20.095
28) SA Decachlor...	10.221	11.426	14291611	20256374	20.166	20.337
Target Compounds						
2) A alpha-BHC	5.157f	0.000	235922	0	0.321	N.D. #
6) B beta-BHC	5.963f	0.000	204725	0	0.572	N.D. #
7) B delta-BHC	0.000	7.004f	0	1159825	N.D.	0.987 #

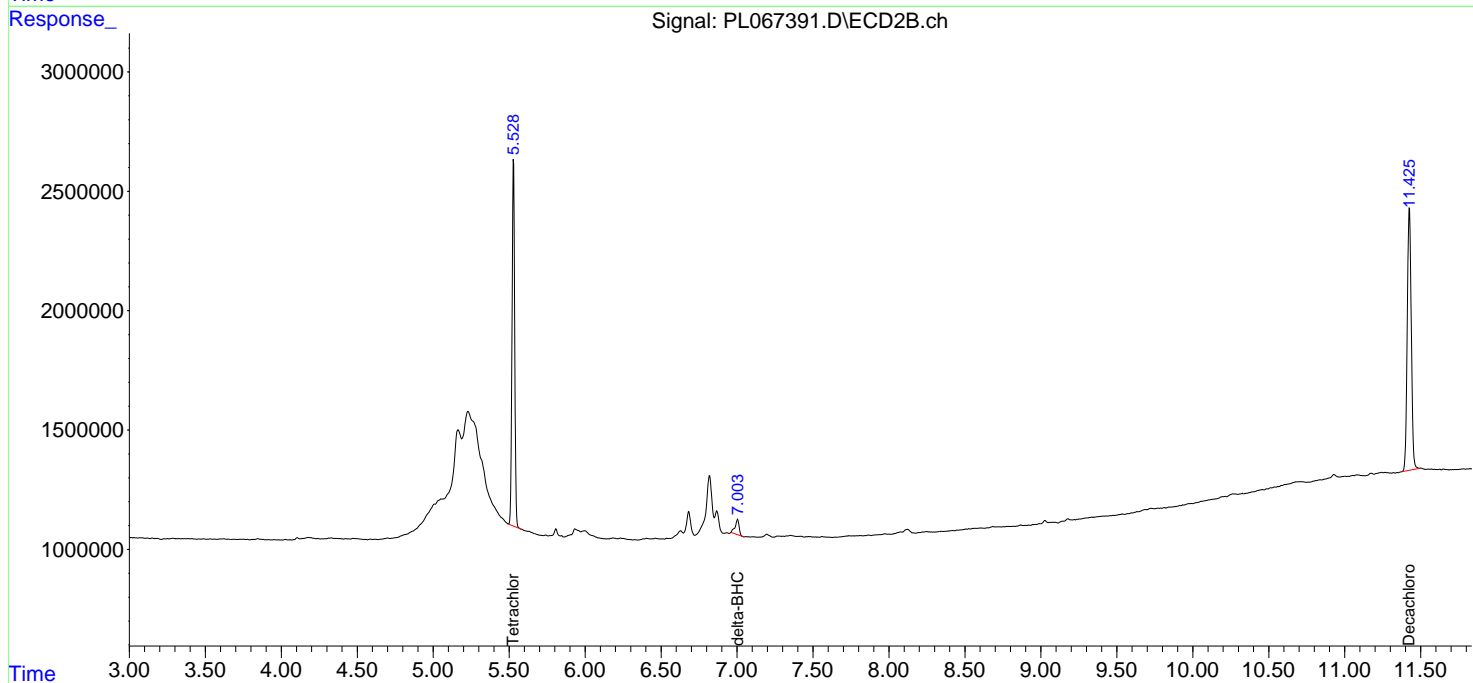
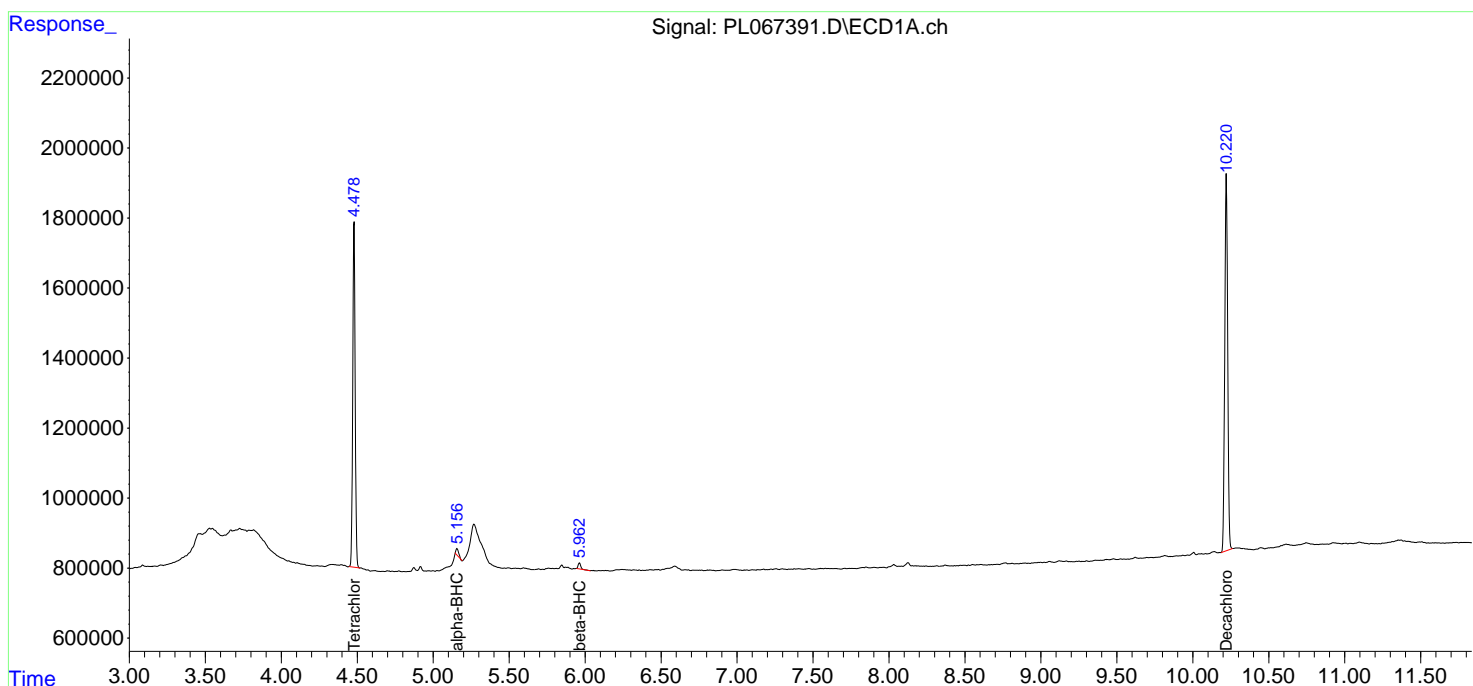
(f)=RT Delta > 1/2 Window (#)=Amounts differ by > 25% (m)=manual int.

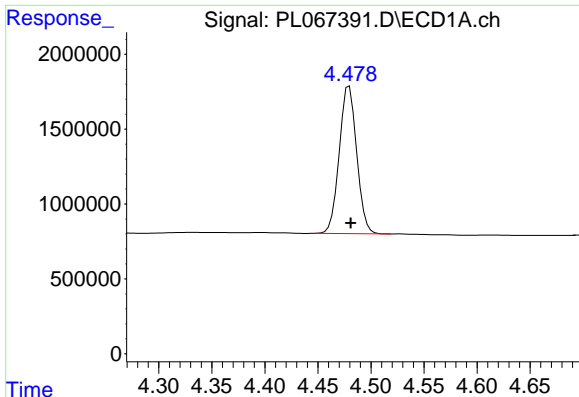
Data Path : Z:\pestpcbsrv\HPCHEM1\ECD_L\Data\PL061421\
 Data File : PL067391.D
 Signal(s) : Signal #1: ECD1A.ch Signal #2: ECD2B.ch
 Acq On : 14 Jun 2021 10:01
 Operator : AR\AJ
 Sample : PB137073BL
 Misc :
 ALS Vial : 5 Sample Multiplier: 1

Instrument :
 ECD_L
 ClientSampled :

Integration File signal 1: autoint1.e
 Integration File signal 2: autoint2.e
 Quant Time: Jun 14 13:12:35 2021
 Quant Method : Z:\pestpcbsrv\HPCHEM1\ECD_L\methods\PL061021.M
 Quant Title : GC Extractables
 QLast Update : Fri Jun 11 02:00:12 2021
 Response via : Initial Calibration
 Integrator: ChemStation

Volume Inj. : 1 µl
 Signal #1 Phase : ZB-MR2 Signal #2 Phase: ZB-MR1
 Signal #1 Info : 30M x 0.32mm x0.2 Signal #2 Info : 30M x 0.32mm x0.5µm

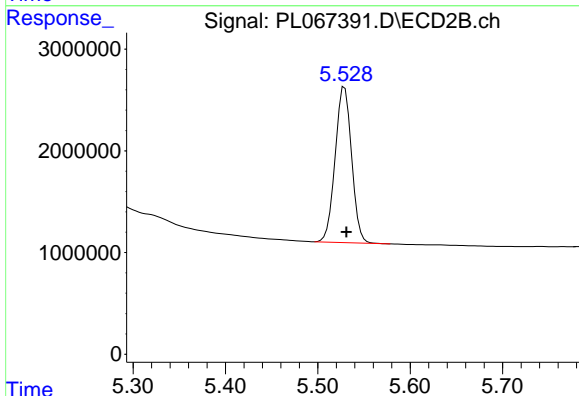




#1 Tetrachloro-m-xylene

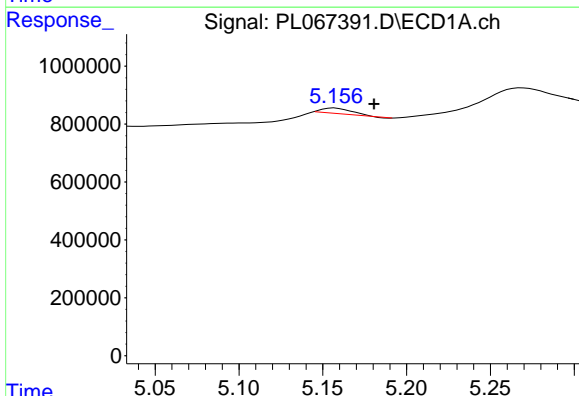
R.T.: 4.480 min
Delta R.T.: -0.001 min
Response: 11239732
Conc: 20.44 ng/ml

Instrument :
ECD_L
ClientSampleId :



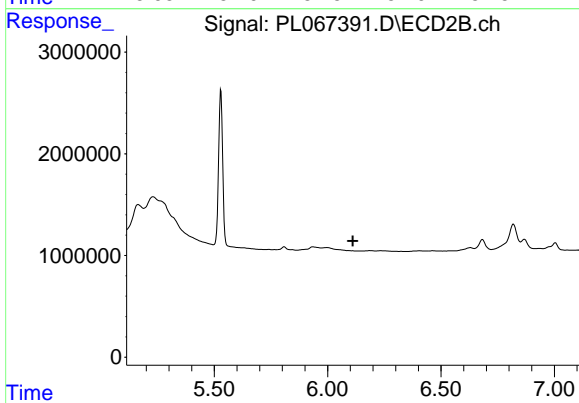
#1 Tetrachloro-m-xylene

R.T.: 5.529 min
Delta R.T.: -0.002 min
Response: 18944228
Conc: 20.09 ng/ml



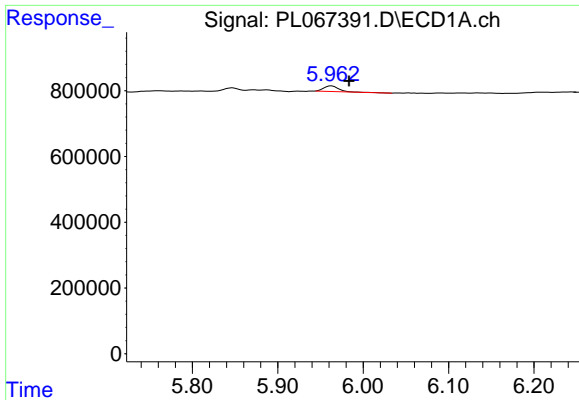
#2 alpha-BHC

R.T.: 5.157 min
Delta R.T.: -0.023 min
Response: 235922
Conc: 0.32 ng/ml



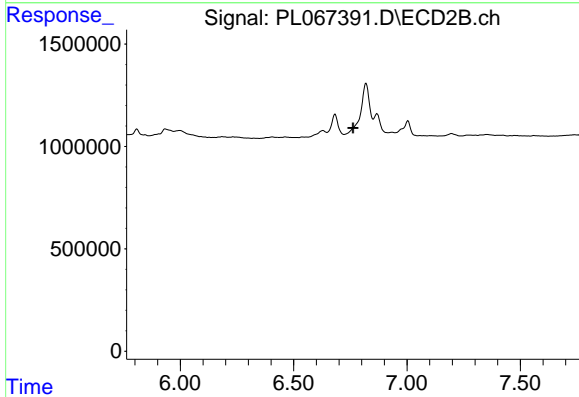
#2 alpha-BHC

R.T.: 0.000 min
Exp R.T. : 6.112 min
Response: 0
Conc: N.D.

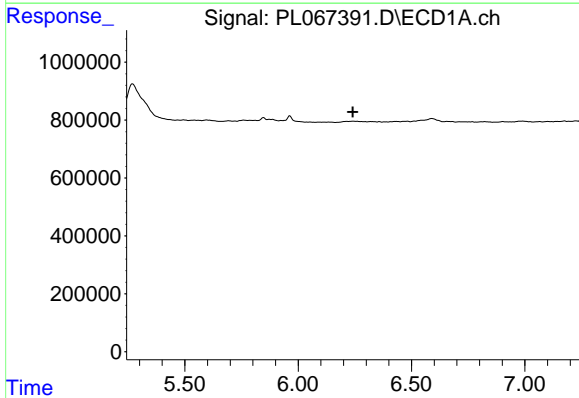


#6 beta-BHC
 R.T.: 5.963 min
 Delta R.T.: -0.020 min
 Response: 204725
 Conc: 0.57 ng/ml

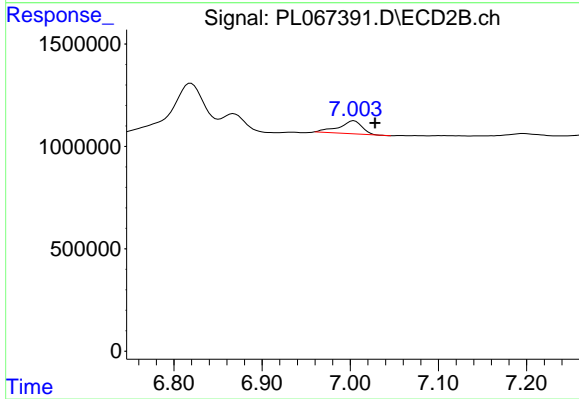
Instrument :
 ECD_L
 ClientSampled :



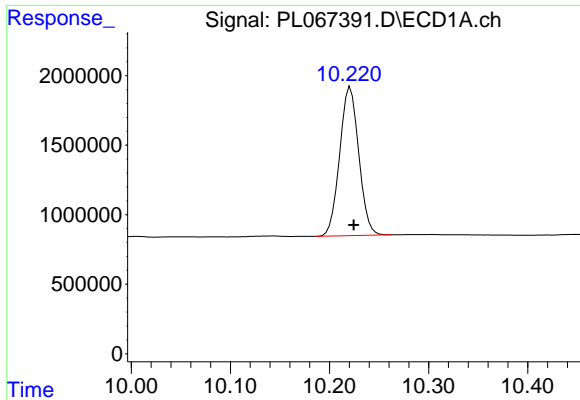
#6 beta-BHC
 R.T.: 0.000 min
 Exp R.T. : 6.762 min
 Response: 0
 Conc: N.D.



#7 delta-BHC
 R.T.: 0.000 min
 Exp R.T. : 6.241 min
 Response: 0
 Conc: N.D.



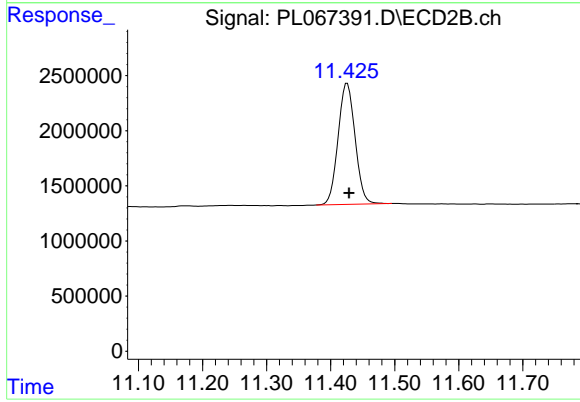
#7 delta-BHC
 R.T.: 7.004 min
 Delta R.T.: -0.024 min
 Response: 1159825
 Conc: 0.99 ng/ml



#28 Decachlorobiphenyl

R.T.: 10.221 min
Delta R.T.: -0.003 min
Response: 14291611
Conc: 20.17 ng/ml

Instrument :
ECD_L
ClientSampleId :



#28 Decachlorobiphenyl

R.T.: 11.426 min
Delta R.T.: -0.003 min
Response: 20256374
Conc: 20.34 ng/ml