

Data Path : Z:\pestpcbsrv\HPCHEM1\ECD_L\Data\PL061422\
 Data File : PL075764.D
 Signal(s) : Signal #1: ECD1A.ch Signal #2: ECD2B.ch
 Acq On : 14 Jun 2022 15:00
 Operator : AR\AJ
 Sample : N3327-01MSD
 Misc :
 ALS Vial : 12 Sample Multiplier: 1

Instrument :
 ECD_L
 ClientSampleId :
 EW-WMR-COMP-1MSD

Integration File signal 1: autoint1.e
 Integration File signal 2: autoint2.e
 Quant Time: Jun 15 00:45:30 2022
 Quant Method : Z:\pestpcbsrv\HPCHEM1\ECD_L\methods\PL060622.M
 Quant Title : GC Extractables
 QLast Update : Tue Jun 07 02:04:29 2022
 Response via : Initial Calibration
 Integrator: ChemStation

Volume Inj. : 1 µl
 Signal #1 Phase : ZB-MR2 Signal #2 Phase: ZB-MR1
 Signal #1 Info : 30M x 0.32mm x0.2 Signal #2 Info : 30M x 0.32mm x0.5µm

Compound	RT#1	RT#2	Resp#1	Resp#2	ng/ml	ng/ml

System Monitoring Compounds						
1) SA Tetrachlo...	5.649	4.637	12828104	30364671	19.008	18.094
28) SA Decachlor...	11.643	10.381	10946383	22041765	17.880	15.644
Target Compounds						
2) A alpha-BHC	6.233	5.339	59578991	139.8E6	63.385	61.746
3) MA gamma-BHC...	6.631	5.760	56400068	129.2E6	64.256	59.568
4) MA Heptachlor	7.285	6.168	55208258	121.6E6	60.039	57.009
5) MB Aldrin	7.658	6.492	52019830	116.9E6	63.357	59.517
6) B beta-BHC	6.883	6.139	23679339	51136703	57.696	52.098
7) B delta-BHC	7.153	6.399	44473645	124.8E6	57.797	58.293
8) B Heptachlo...	8.126	7.066	38068643	104.8E6	49.249	57.263
9) A Endosulfan I	8.535	7.467	41906066	94453634	59.893	56.472
10) B gamma-Chl...	8.396	7.342	44540039	106.1E6	57.356	57.890
11) B alpha-Chl...	8.478	7.411	45711466	103.6E6	59.941	56.731
12) B 4,4'-DDE	8.664	7.624	40853841	92989059	61.729	58.163
13) MA Dieldrin	8.825	7.753	44259659	99029943	61.265	58.508
14) MA Endrin	9.066	8.044	35843223	85279072	60.453	62.379
15) B Endosulfa...	9.299	8.354	37780184	81764434	60.712	57.055
16) A 4,4'-DDD	9.206	8.207	33394595	72883687	61.033	55.427
17) MA 4,4'-DDT	9.526	8.468	36740081	79610331	57.354	56.631
18) B Endrin al...	9.434	8.541	30137144	63889065	58.842	56.722
19) B Endosulfa...	9.673	8.771	36808478	81722298	58.762	55.639
20) A Methoxychlor	10.010	9.060	20321571	43755099	56.769	53.711
21) B Endrin ke...	10.175	9.290	41947480	84869782	59.649	52.575
22) Mirex	10.648	9.476	31318573	66149698	55.649	51.513

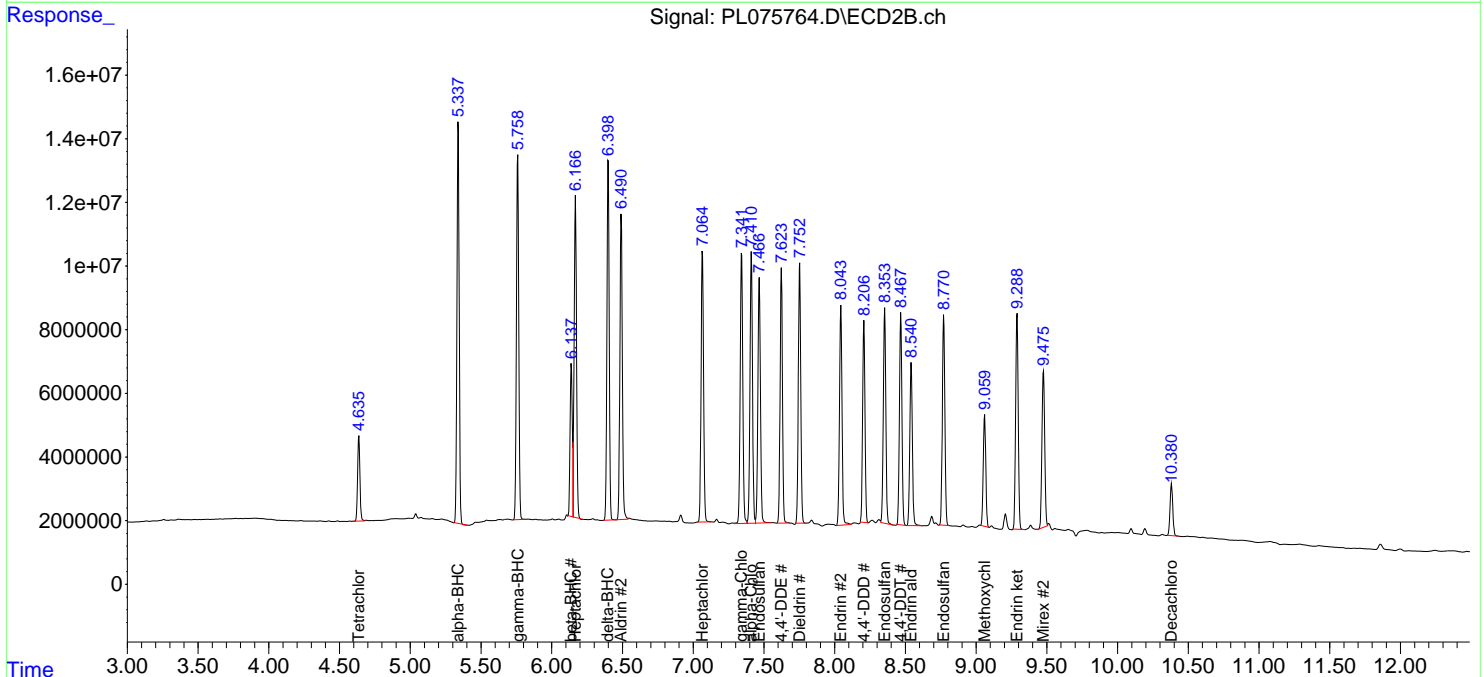
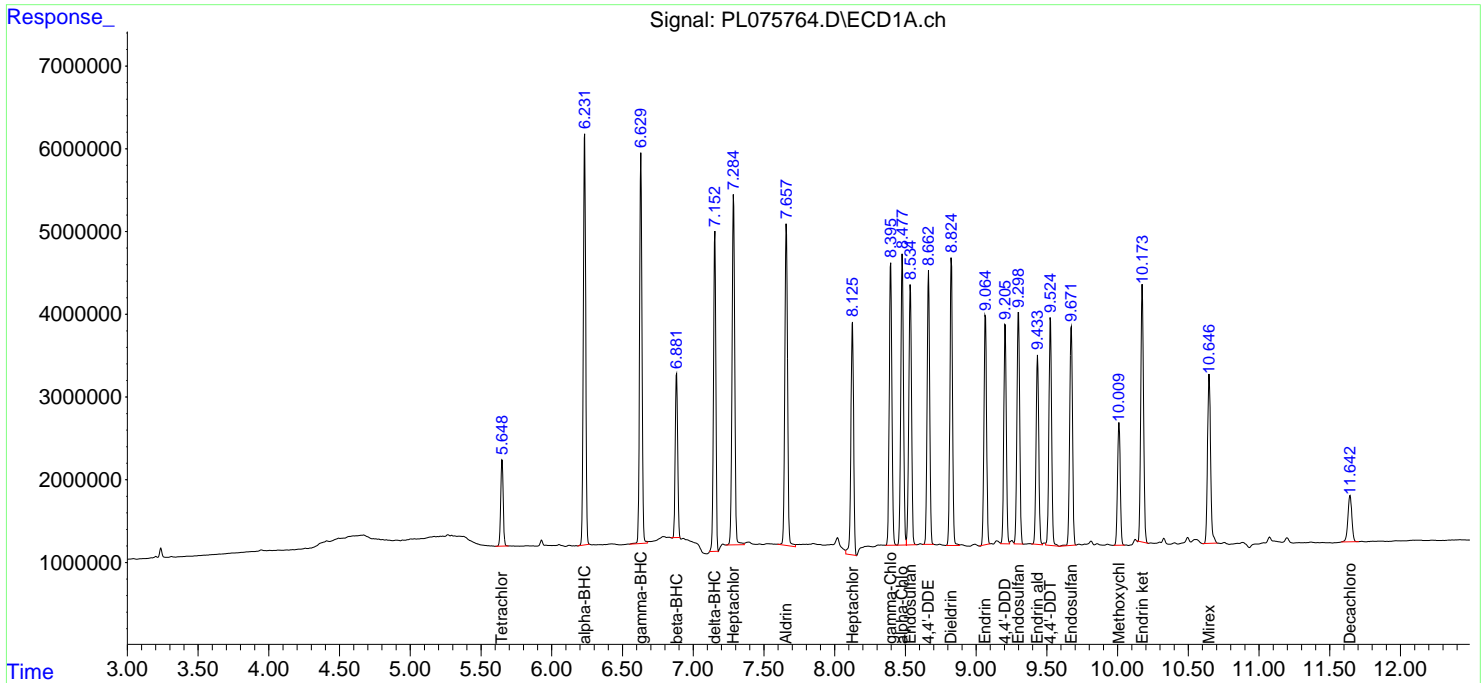
(f)=RT Delta > 1/2 Window (#)=Amounts differ by > 25% (m)=manual int.

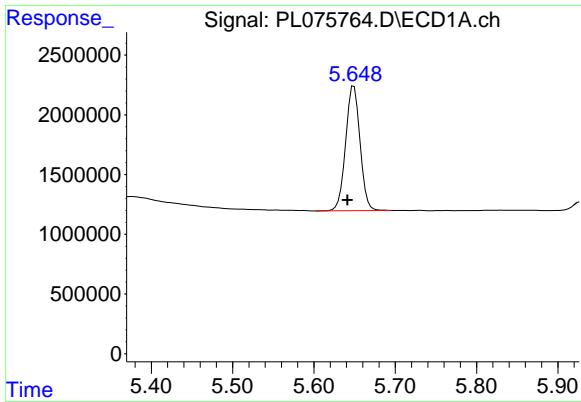
Data Path : Z:\pestpcbsrv\HPCHEM1\ECD_L\Data\PL061422\
 Data File : PL075764.D
 Signal(s) : Signal #1: ECD1A.ch Signal #2: ECD2B.ch
 Acq On : 14 Jun 2022 15:00
 Operator : AR\AJ
 Sample : N3327-01MSD
 Misc :
 ALS Vial : 12 Sample Multiplier: 1

Instrument :
 ECD_L
 ClientSampleId :
 EW-WMR-COMP-1MSD

Integration File signal 1: autoint1.e
 Integration File signal 2: autoint2.e
 Quant Time: Jun 15 00:45:30 2022
 Quant Method : Z:\pestpcbsrv\HPCHEM1\ECD_L\methods\PL060622.M
 Quant Title : GC Extractables
 QLast Update : Tue Jun 07 02:04:29 2022
 Response via : Initial Calibration
 Integrator: ChemStation

Volume Inj. : 1 µl
 Signal #1 Phase : ZB-MR2 Signal #2 Phase: ZB-MR1
 Signal #1 Info : 30M x 0.32mm x0.2 Signal #2 Info : 30M x 0.32mm x0.5µm

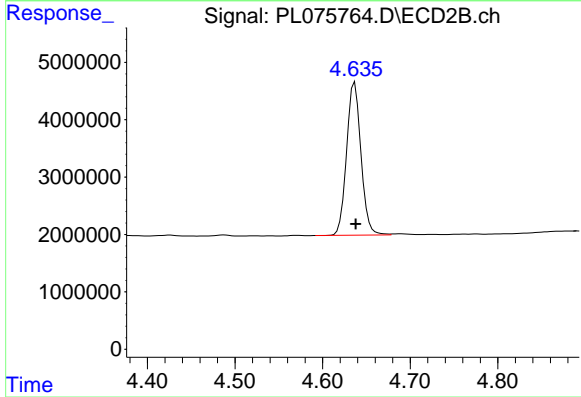




#1 Tetrachloro-m-xylene

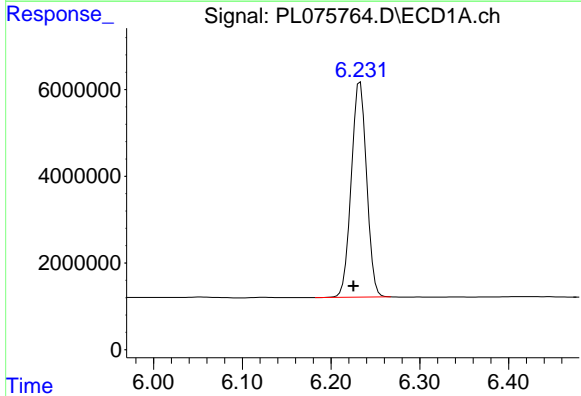
R.T.: 5.649 min
 Delta R.T.: 0.008 min
 Response: 12828104
 Conc: 19.01 ng/ml

Instrument :
 ECD_L
 ClientSampleId :
 EW-WMR-COMP-1MSD



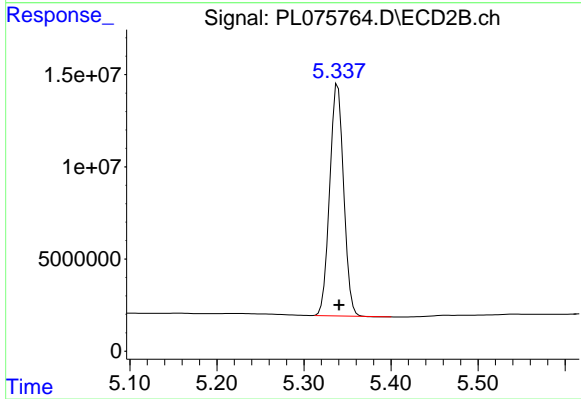
#1 Tetrachloro-m-xylene

R.T.: 4.637 min
 Delta R.T.: -0.001 min
 Response: 30364671
 Conc: 18.09 ng/ml



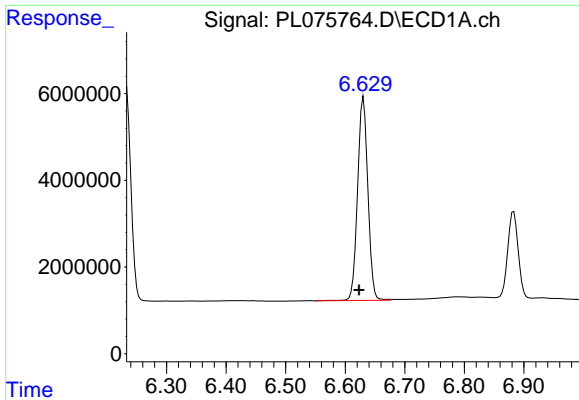
#2 alpha-BHC

R.T.: 6.233 min
 Delta R.T.: 0.008 min
 Response: 59578991
 Conc: 63.38 ng/ml



#2 alpha-BHC

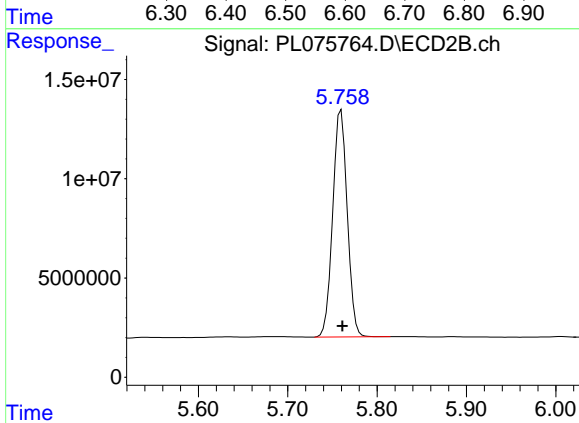
R.T.: 5.339 min
 Delta R.T.: -0.001 min
 Response: 139811348
 Conc: 61.75 ng/ml



#3 gamma-BHC (Lindane)

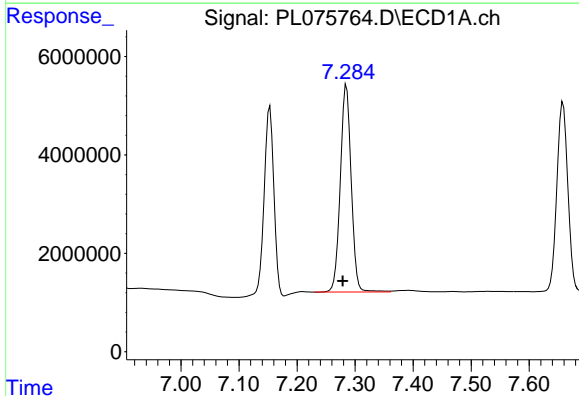
R.T.: 6.631 min
 Delta R.T.: 0.007 min
 Response: 56400068
 Conc: 64.26 ng/ml

Instrument :
 ECD_L
 ClientSampleId :
 EW-WMR-COMP-1MSD



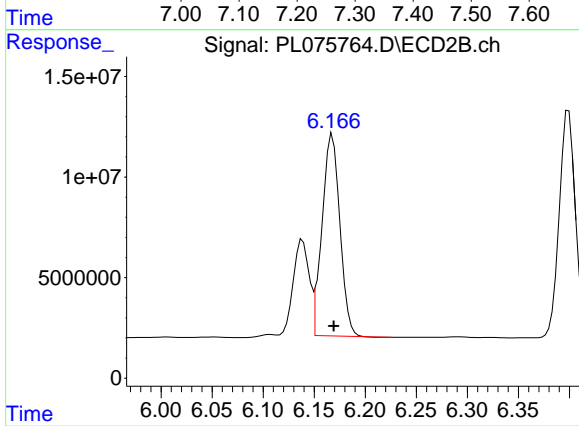
#3 gamma-BHC (Lindane)

R.T.: 5.760 min
 Delta R.T.: -0.001 min
 Response: 129176207
 Conc: 59.57 ng/ml



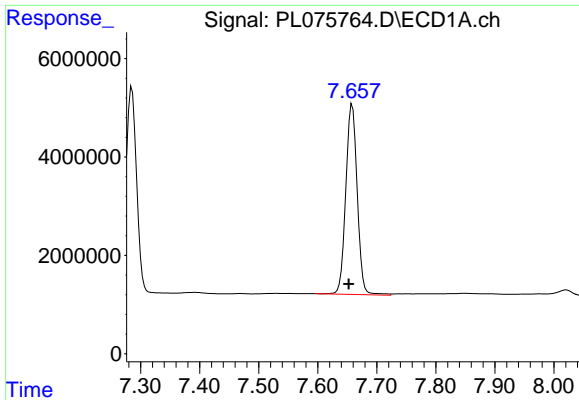
#4 Heptachlor

R.T.: 7.285 min
 Delta R.T.: 0.006 min
 Response: 55208258
 Conc: 60.04 ng/ml



#4 Heptachlor

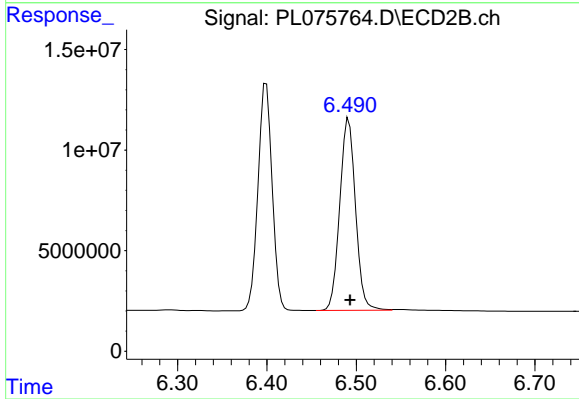
R.T.: 6.168 min
 Delta R.T.: -0.001 min
 Response: 121554665
 Conc: 57.01 ng/ml



#5 Aldrin

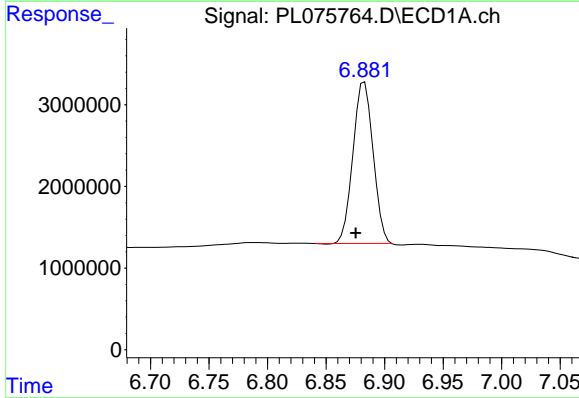
R.T.: 7.658 min
 Delta R.T.: 0.006 min
 Response: 52019830
 Conc: 63.36 ng/ml

Instrument :
 ECD_L
 ClientSampleId :
 EW-WMR-COMP-1MSD



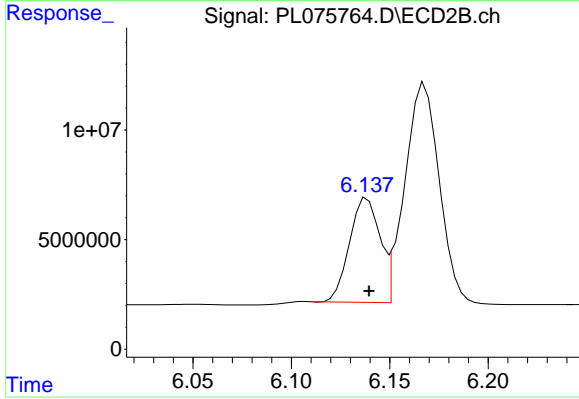
#5 Aldrin

R.T.: 6.492 min
 Delta R.T.: -0.002 min
 Response: 116890834
 Conc: 59.52 ng/ml



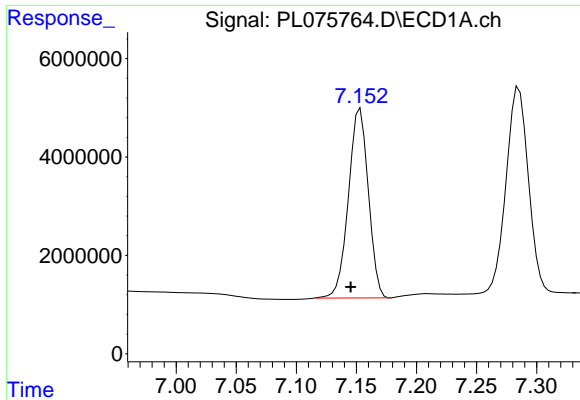
#6 beta-BHC

R.T.: 6.883 min
 Delta R.T.: 0.008 min
 Response: 23679339
 Conc: 57.70 ng/ml



#6 beta-BHC

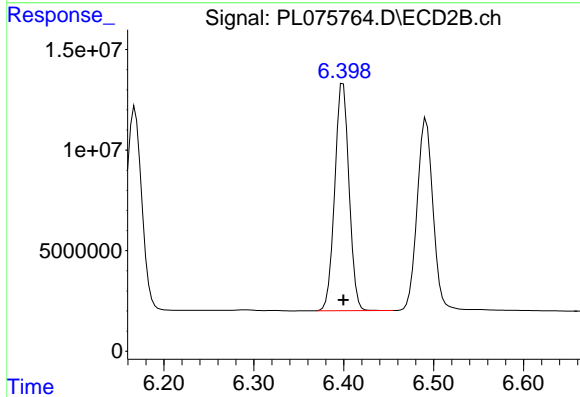
R.T.: 6.139 min
 Delta R.T.: 0.000 min
 Response: 51136703
 Conc: 52.10 ng/ml



#7 delta-BHC

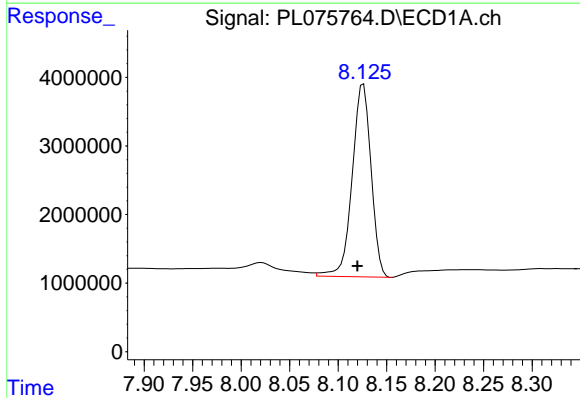
R.T.: 7.153 min
 Delta R.T.: 0.008 min
 Response: 44473645
 Conc: 57.80 ng/ml

Instrument :
 ECD_L
 ClientSampleId :
 EW-WMR-COMP-1MSD



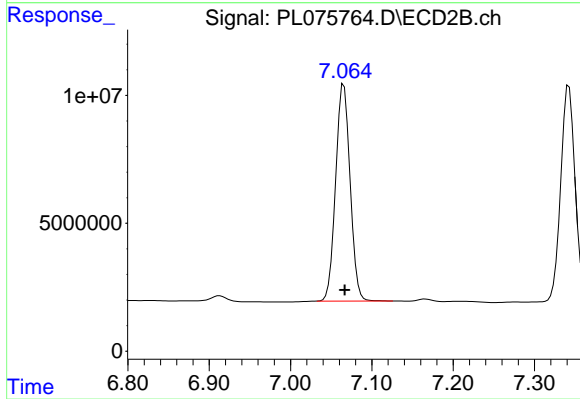
#7 delta-BHC

R.T.: 6.399 min
 Delta R.T.: 0.000 min
 Response: 124795977
 Conc: 58.29 ng/ml



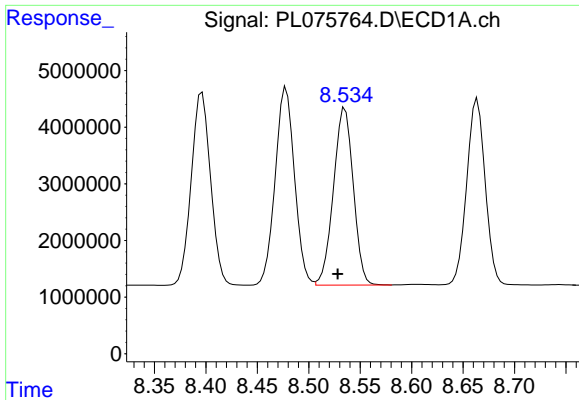
#8 Heptachlor epoxide

R.T.: 8.126 min
 Delta R.T.: 0.006 min
 Response: 38068643
 Conc: 49.25 ng/ml



#8 Heptachlor epoxide

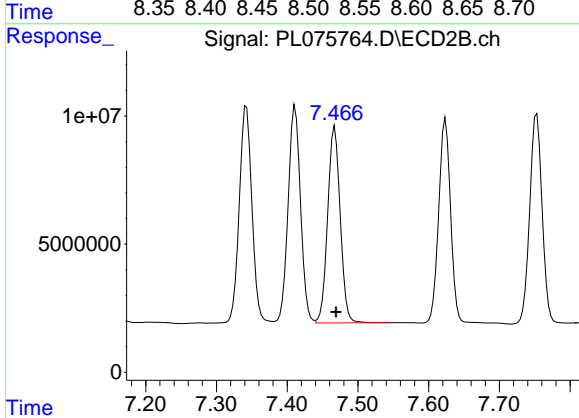
R.T.: 7.066 min
 Delta R.T.: -0.001 min
 Response: 104782798
 Conc: 57.26 ng/ml



#9 Endosulfan I

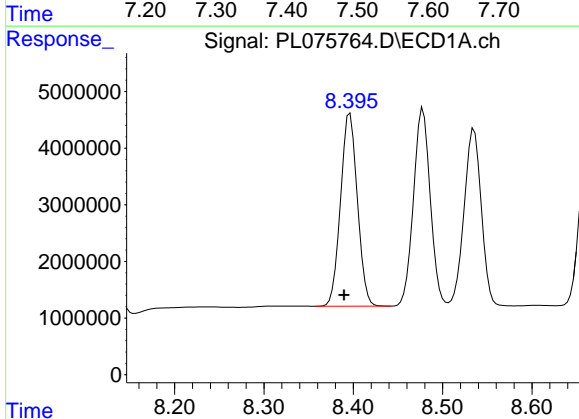
R.T.: 8.535 min
Delta R.T.: 0.007 min
Response: 41906066
Conc: 59.89 ng/ml

Instrument :
ECD_L
ClientSampleId :
EW-WMR-COMP-1MSD



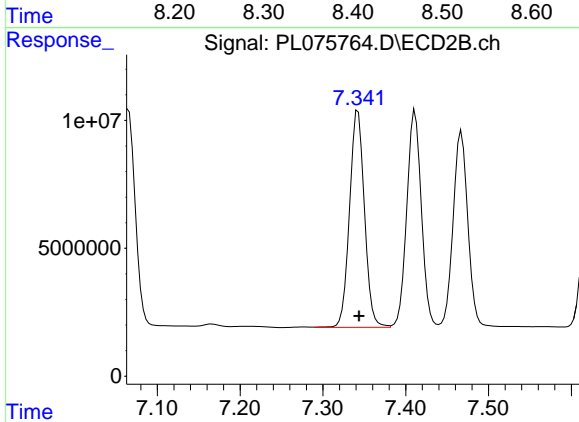
#9 Endosulfan I

R.T.: 7.467 min
Delta R.T.: -0.002 min
Response: 94453634
Conc: 56.47 ng/ml



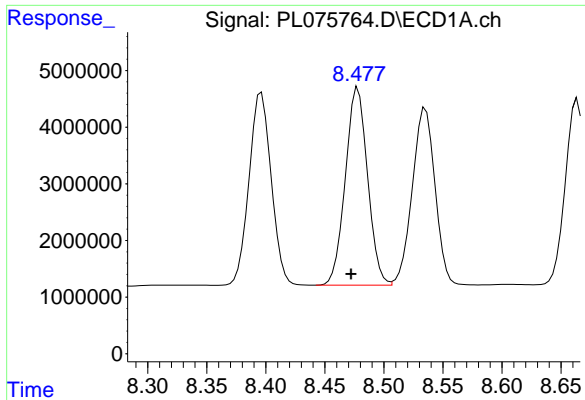
#10 gamma-Chlordane

R.T.: 8.396 min
Delta R.T.: 0.006 min
Response: 44540039
Conc: 57.36 ng/ml



#10 gamma-Chlordane

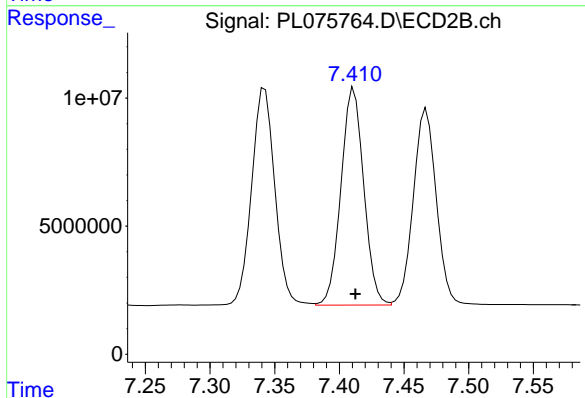
R.T.: 7.342 min
Delta R.T.: -0.001 min
Response: 106141729
Conc: 57.89 ng/ml



#11 alpha-Chlordane

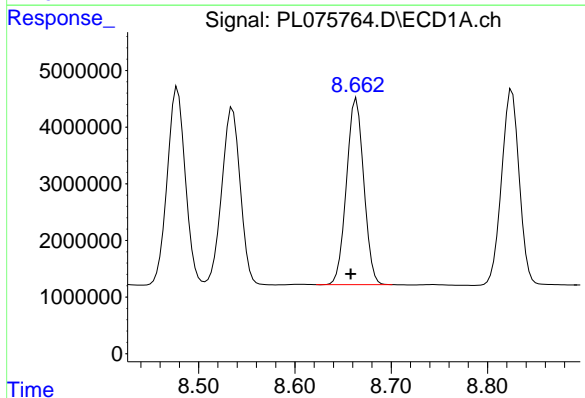
R.T.: 8.478 min
Delta R.T.: 0.006 min
Response: 45711466
Conc: 59.94 ng/ml

Instrument :
ECD_L
ClientSampleId :
EW-WMR-COMP-1MSD



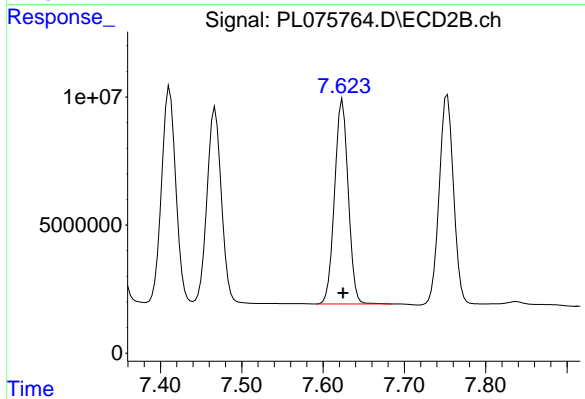
#11 alpha-Chlordane

R.T.: 7.411 min
Delta R.T.: -0.001 min
Response: 103583744
Conc: 56.73 ng/ml



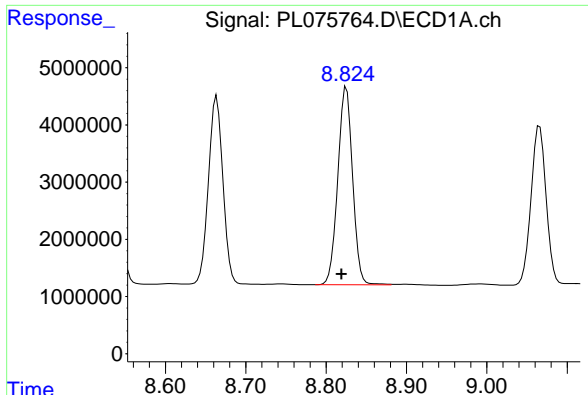
#12 4,4'-DDE

R.T.: 8.664 min
Delta R.T.: 0.006 min
Response: 40853841
Conc: 61.73 ng/ml



#12 4,4'-DDE

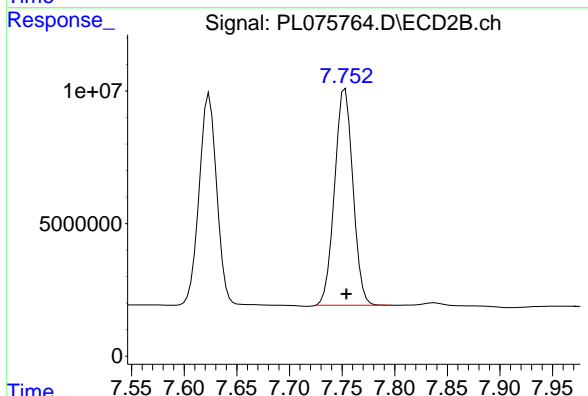
R.T.: 7.624 min
Delta R.T.: 0.000 min
Response: 92989059
Conc: 58.16 ng/ml



#13 Dieldrin

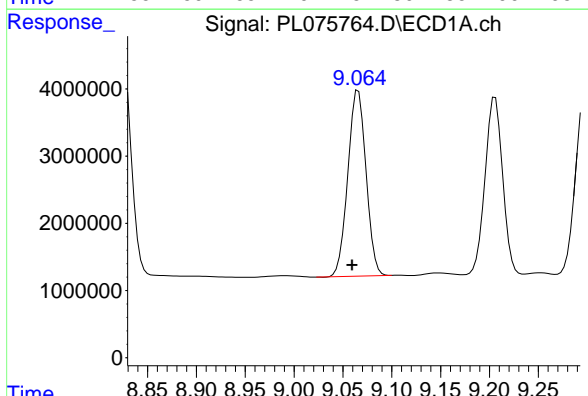
R.T.: 8.825 min
 Delta R.T.: 0.006 min
 Response: 44259659
 Conc: 61.26 ng/ml

Instrument :
 ECD_L
 ClientSampleId :
 EW-WMR-COMP-1MSD



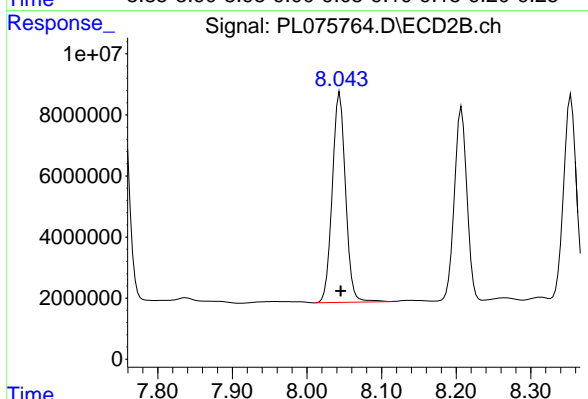
#13 Dieldrin

R.T.: 7.753 min
 Delta R.T.: -0.001 min
 Response: 99029943
 Conc: 58.51 ng/ml



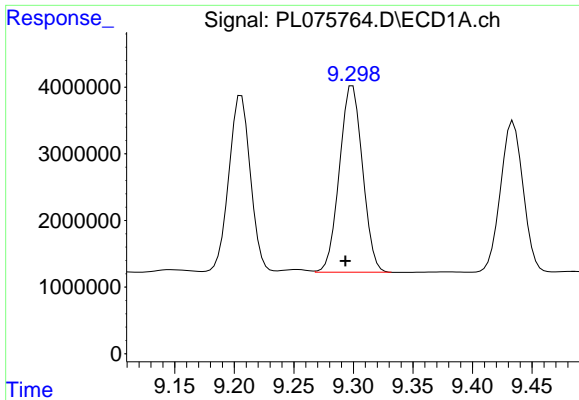
#14 Endrin

R.T.: 9.066 min
 Delta R.T.: 0.006 min
 Response: 35843223
 Conc: 60.45 ng/ml



#14 Endrin

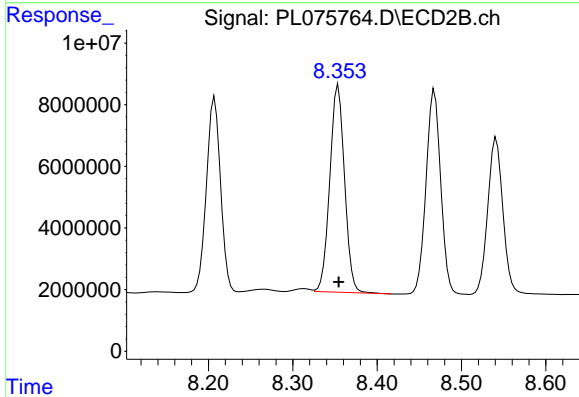
R.T.: 8.044 min
 Delta R.T.: 0.000 min
 Response: 85279072
 Conc: 62.38 ng/ml



#15 Endosulfan II

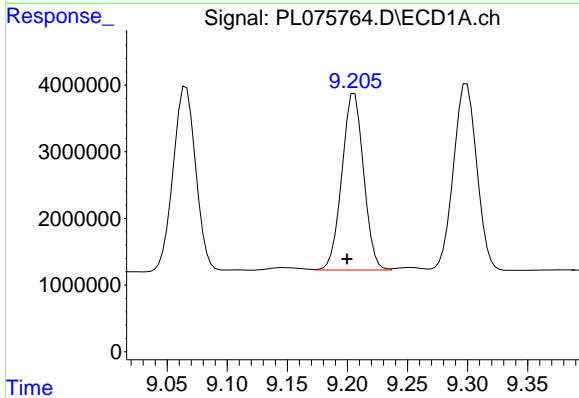
R.T.: 9.299 min
 Delta R.T.: 0.006 min
 Response: 37780184
 Conc: 60.71 ng/ml

Instrument :
 ECD_L
 ClientSampleId :
 EW-WMR-COMP-1MSD



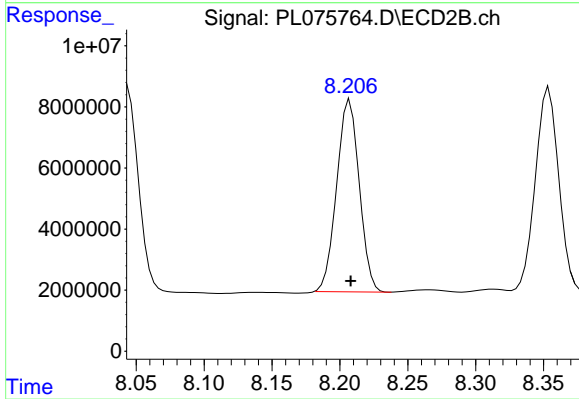
#15 Endosulfan II

R.T.: 8.354 min
 Delta R.T.: 0.000 min
 Response: 81764434
 Conc: 57.06 ng/ml



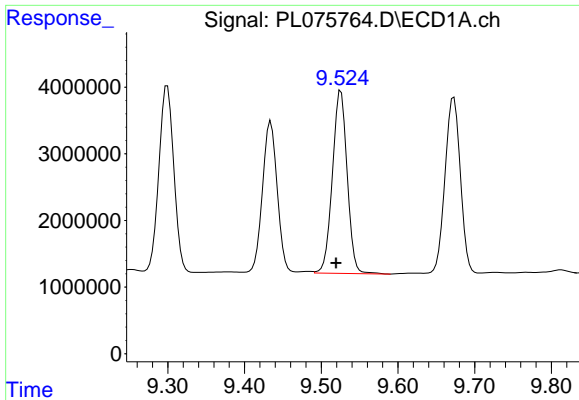
#16 4,4'-DDD

R.T.: 9.206 min
 Delta R.T.: 0.006 min
 Response: 33394595
 Conc: 61.03 ng/ml



#16 4,4'-DDD

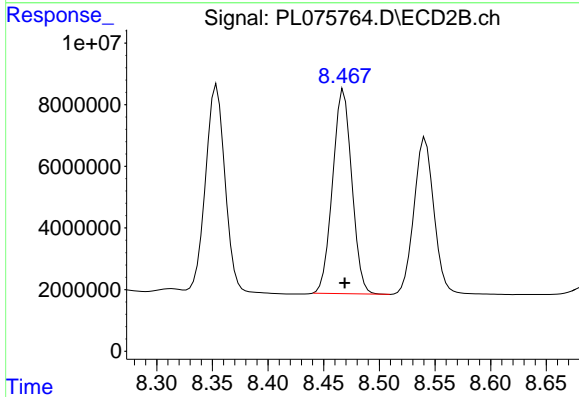
R.T.: 8.207 min
 Delta R.T.: 0.000 min
 Response: 72883687
 Conc: 55.43 ng/ml



#17 4,4'-DDT

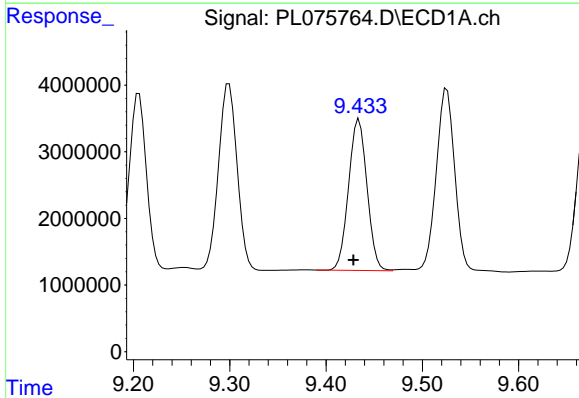
R.T.: 9.526 min
 Delta R.T.: 0.006 min
 Response: 36740081
 Conc: 57.35 ng/ml

Instrument :
 ECD_L
 ClientSampleId :
 EW-WMR-COMP-1MSD



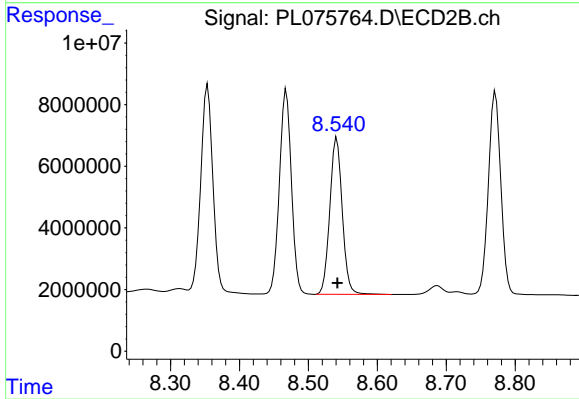
#17 4,4'-DDT

R.T.: 8.468 min
 Delta R.T.: 0.000 min
 Response: 79610331
 Conc: 56.63 ng/ml



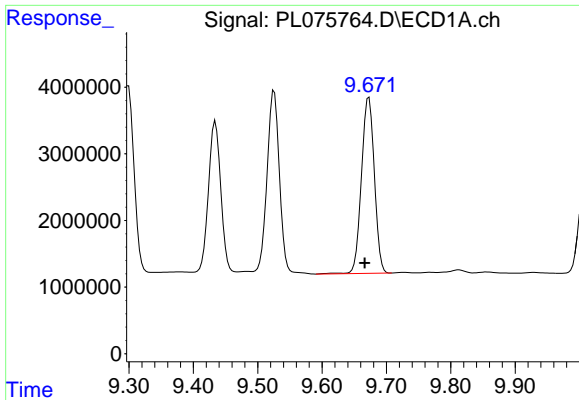
#18 Endrin aldehyde

R.T.: 9.434 min
 Delta R.T.: 0.006 min
 Response: 30137144
 Conc: 58.84 ng/ml



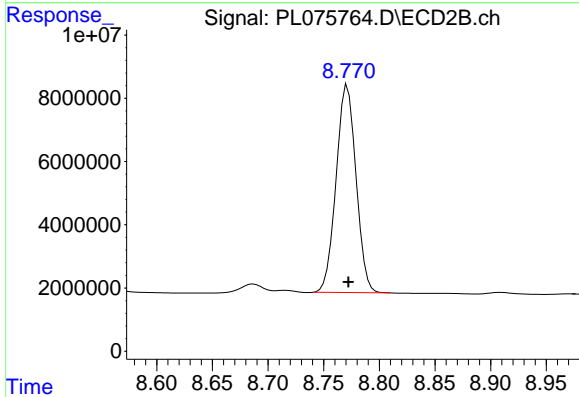
#18 Endrin aldehyde

R.T.: 8.541 min
 Delta R.T.: 0.000 min
 Response: 63889065
 Conc: 56.72 ng/ml

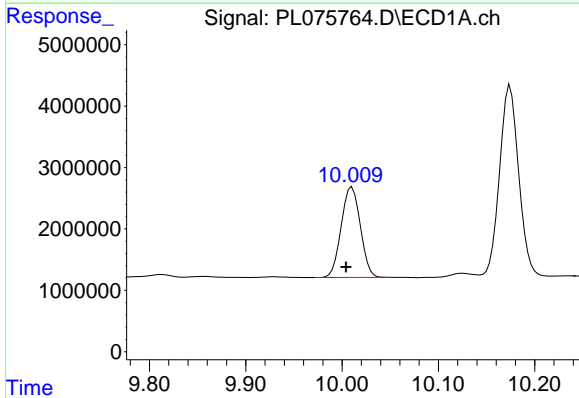


#19 Endosulfan Sulfate
 R.T.: 9.673 min
 Delta R.T.: 0.006 min
 Response: 36808478
 Conc: 58.76 ng/ml

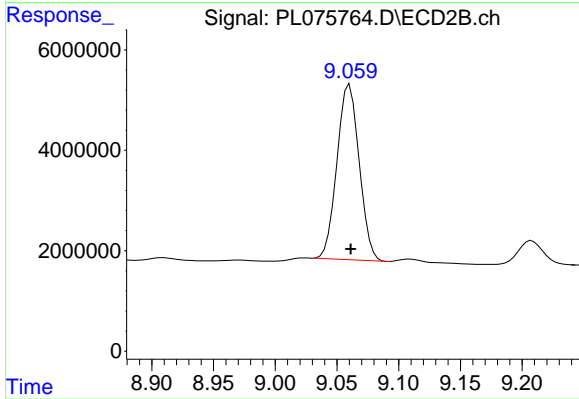
Instrument :
 ECD_L
 ClientSampleId :
 EW-WMR-COMP-1MSD



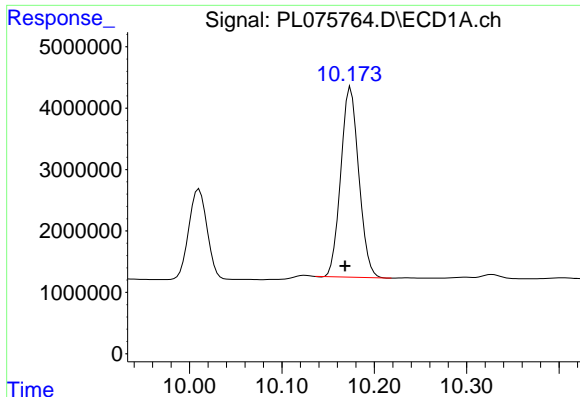
#19 Endosulfan Sulfate
 R.T.: 8.771 min
 Delta R.T.: 0.000 min
 Response: 81722298
 Conc: 55.64 ng/ml



#20 Methoxychlor
 R.T.: 10.010 min
 Delta R.T.: 0.006 min
 Response: 20321571
 Conc: 56.77 ng/ml



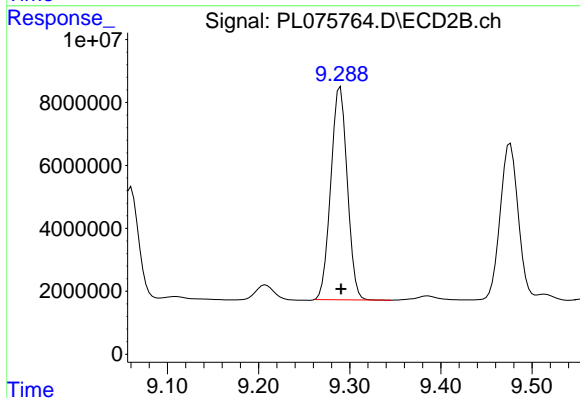
#20 Methoxychlor
 R.T.: 9.060 min
 Delta R.T.: 0.000 min
 Response: 43755099
 Conc: 53.71 ng/ml



#21 Endrin ketone

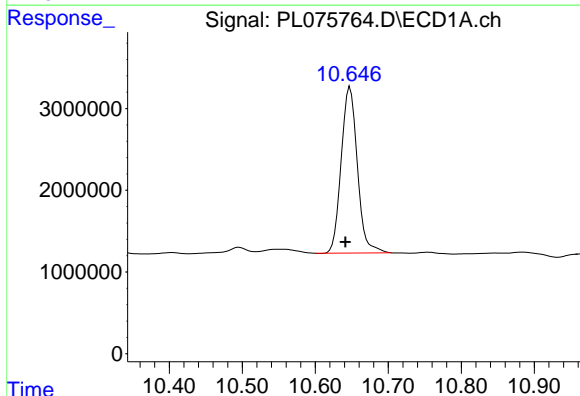
R.T.: 10.175 min
 Delta R.T.: 0.006 min
 Response: 41947480
 Conc: 59.65 ng/ml

Instrument :
 ECD_L
 ClientSampleId :
 EW-WMR-COMP-1MSD



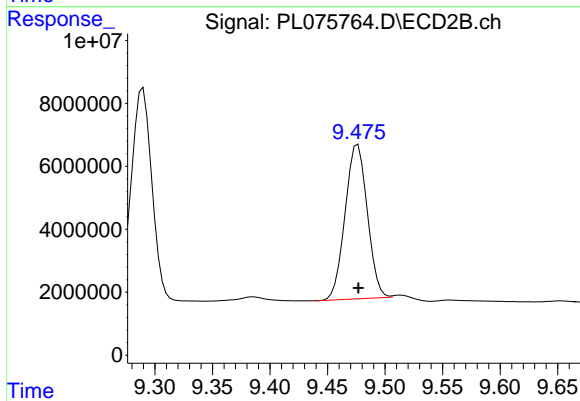
#21 Endrin ketone

R.T.: 9.290 min
 Delta R.T.: 0.000 min
 Response: 84869782
 Conc: 52.58 ng/ml



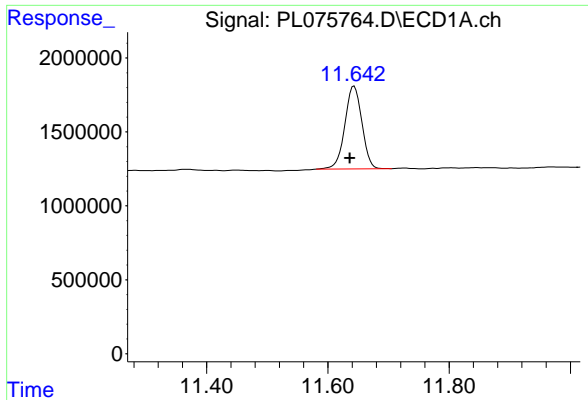
#22 Mirex

R.T.: 10.648 min
 Delta R.T.: 0.006 min
 Response: 31318573
 Conc: 55.65 ng/ml



#22 Mirex

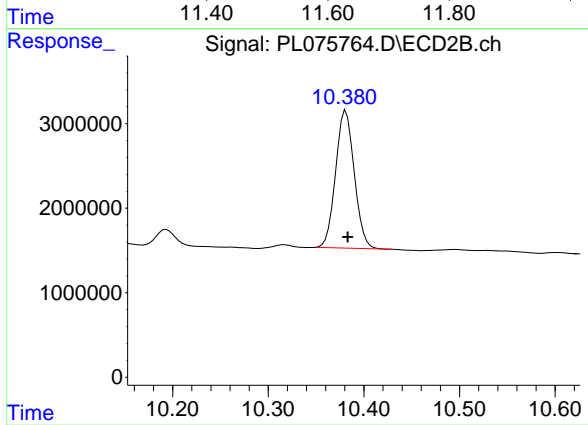
R.T.: 9.476 min
 Delta R.T.: 0.000 min
 Response: 66149698
 Conc: 51.51 ng/ml



#28 Decachlorobiphenyl

R.T.: 11.643 min
Delta R.T.: 0.007 min
Response: 10946383
Conc: 17.88 ng/ml

Instrument :
ECD_L
ClientSampleId :
EW-WMR-COMP-1MSD



#28 Decachlorobiphenyl

R.T.: 10.381 min
Delta R.T.: -0.002 min
Response: 22041765
Conc: 15.64 ng/ml