

Data Path : Z:\pestpcbsrv\HPCHEM1\ECD_L\Data\PL061423\
 Data File : PL083441.D
 Signal(s) : Signal #1: ECD1A.ch Signal #2: ECD2B.ch
 Acq On : 14 Jun 2023 19:16
 Operator : AR\AJ
 Sample : PEM
 Misc :
 ALS Vial : 3 Sample Multiplier: 1

Instrument :
 ECD_L
 ClientSampleId :

Integration File signal 1: autoint1.e
 Integration File signal 2: autoint2.e
 Quant Time: Jun 14 22:41:06 2023
 Quant Method : Z:\pestpcbsrv\HPCHEM1\ECD_L\methods\PL051923.M
 Quant Title : GC Extractables
 QLast Update : Sat May 20 04:58:53 2023
 Response via : Initial Calibration
 Integrator: ChemStation

Volume Inj. : 1 µl
 Signal #1 Phase : ZB-MR2 Signal #2 Phase: ZB-MR1
 Signal #1 Info : 30M x 0.32mm x0.2 Signal #2 Info : 30M x 0.32mm x0.5µm

	Compound	RT#1	RT#2	Resp#1	Resp#2	ng/ml	ng/ml

System Monitoring Compounds							
1)	SA Tetrachlo...	3.313	2.631	51346109	46979370	17.470	18.096
28)	SA Decachlor...	8.729	7.732	40045807	46606024	19.094	18.743
Target Compounds							
2)	A alpha-BHC	3.762	3.126	35828219	30986966	8.071	8.304
3)	MA gamma-BHC...	4.090	3.452	34613045	27866356	8.355	8.360
4)	MA Heptachlor	4.707f	0.000	130872	0	0.034	N.D. #
5)	MB Aldrin	0.000	4.087f	0	1938773	N.D.	0.596 #
6)	B beta-BHC	4.294	3.753	16919880	14256131	8.987	9.969
7)	B delta-BHC	0.000	3.978	0	476098	N.D.	0.145 #
8)	B Heptachlo...	5.429	4.568	2081646	127078	0.651	0.043 #
9)	A Endosulfan I	5.808	4.965f	6095537	346608	2.031	0.124 #
10)	B gamma-Chl...	0.000	4.817	0	4845075	N.D.	1.613 #
12)	B 4,4'-DDE	5.940	5.060	866661	8547264	0.314	3.519 #
13)	MA Dieldrin	0.000	5.187	0	146464	N.D.	0.052 #
14)	MA Endrin	6.313	5.464	104.9E6	95614147	39.037	37.689
16)	A 4,4'-DDD	6.458	5.615	8714010	7386869	4.010	3.841
17)	MA 4,4'-DDT	6.769	5.864	198.3E6	170.5E6	79.210	76.404
18)	B Endrin al...	6.666	5.941	3650723	3824540	1.816	1.934
19)	B Endosulfa...	0.000	6.152f	0	257497	N.D.	0.105 #
20)	A Methoxychlor	7.250	6.442	260.6E6	248.6E6	197.105	195.442
21)	B Endrin ke...	7.379	6.666	6965943	8619375	2.731	3.188
23)	Chlordane-1	0.000	3.648f	0	372850	N.D.	4.519 #
25)	Chlordane-3	5.663f	4.817	18245002	4845075	43.974	18.180 #
27)	Chlordane-5	0.000	5.778	0	804031	N.D.	8.276 #

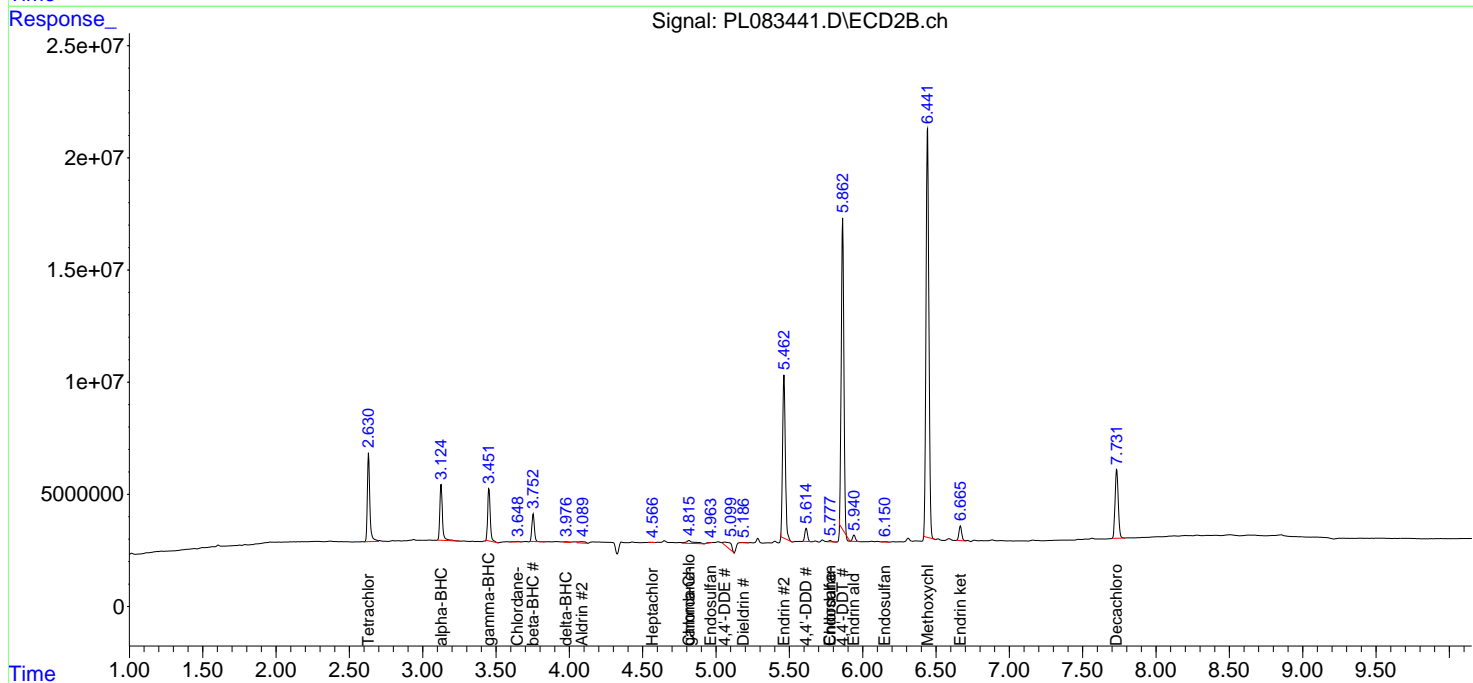
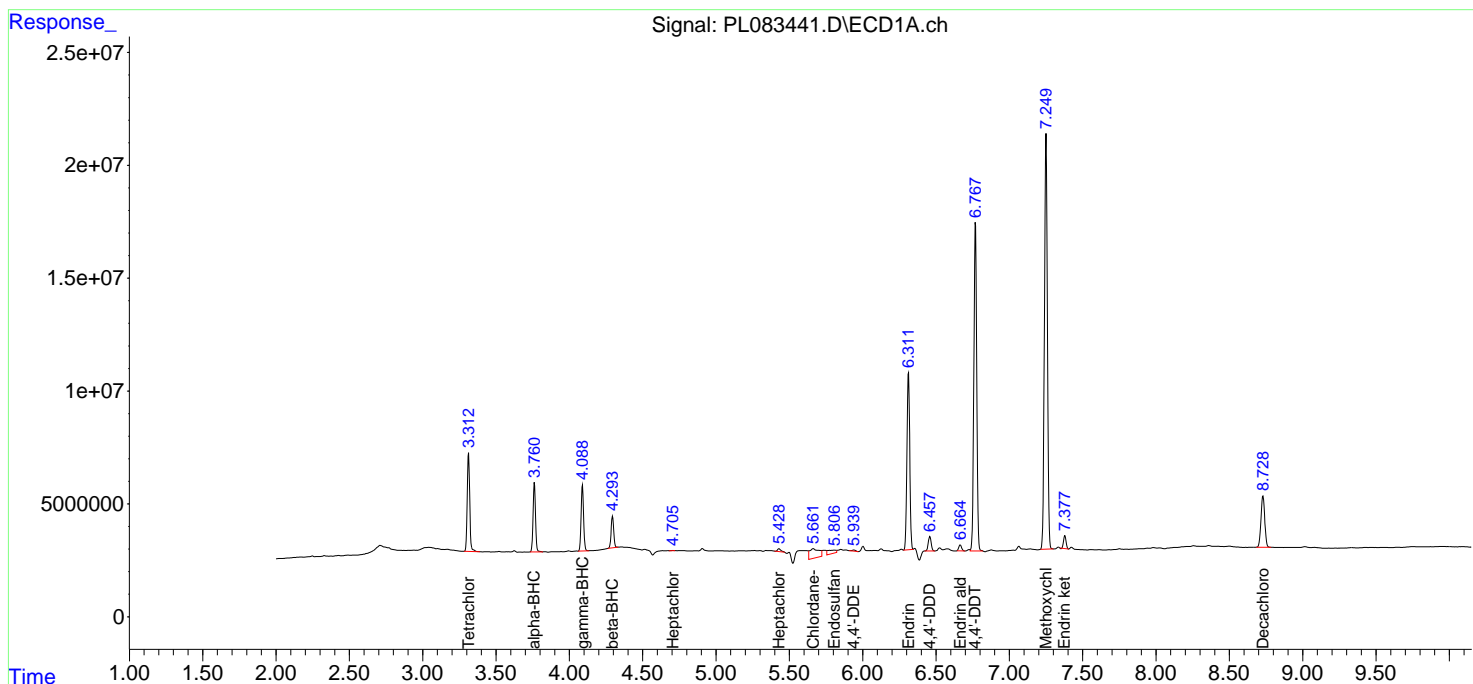
(f)=RT Delta > 1/2 Window (#)=Amounts differ by > 25% (m)=manual int.

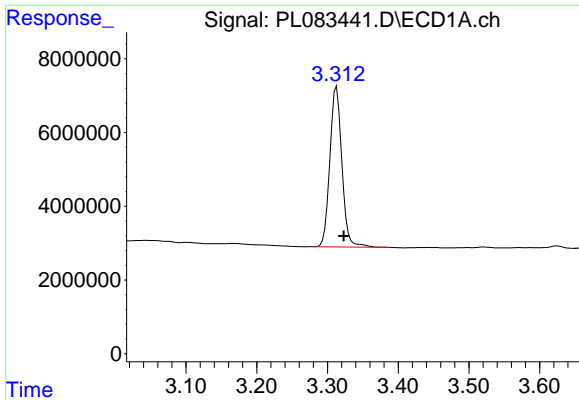
Data Path : Z:\pestpcbsrv\HPCHEM1\ECD_L\Data\PL061423\
 Data File : PL083441.D
 Signal(s) : Signal #1: ECD1A.ch Signal #2: ECD2B.ch
 Acq On : 14 Jun 2023 19:16
 Operator : AR\AJ
 Sample : PEM
 Misc :
 ALS Vial : 3 Sample Multiplier: 1

Instrument :
 ECD_L
 ClientSampleId :

Integration File signal 1: autoint1.e
 Integration File signal 2: autoint2.e
 Quant Time: Jun 14 22:41:06 2023
 Quant Method : Z:\pestpcbsrv\HPCHEM1\ECD_L\methods\PL051923.M
 Quant Title : GC Extractables
 QLast Update : Sat May 20 04:58:53 2023
 Response via : Initial Calibration
 Integrator: ChemStation

Volume Inj. : 1 µl
 Signal #1 Phase : ZB-MR2 Signal #2 Phase: ZB-MR1
 Signal #1 Info : 30M x 0.32mm x0.2 Signal #2 Info : 30M x 0.32mm x0.5µm

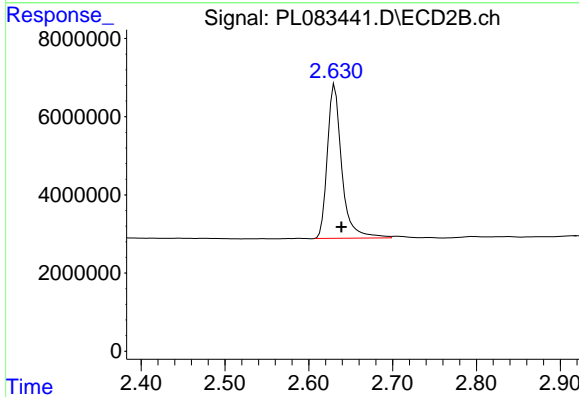




#1 Tetrachloro-m-xylene

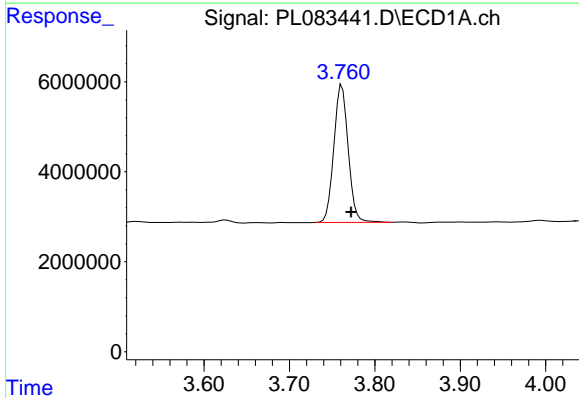
R.T.: 3.313 min
 Delta R.T.: -0.010 min
 Response: 51346109
 Conc: 17.47 ng/ml

Instrument :
 ECD_L
 ClientSampleId :



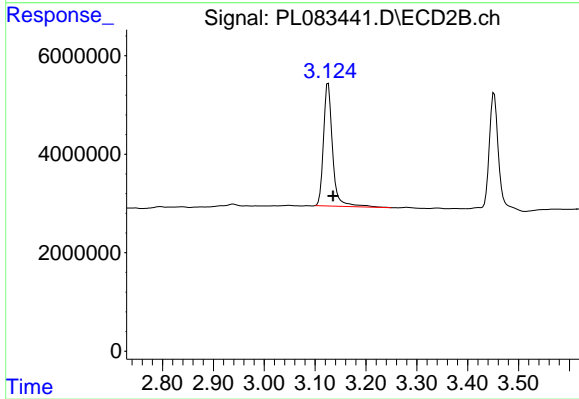
#1 Tetrachloro-m-xylene

R.T.: 2.631 min
 Delta R.T.: -0.008 min
 Response: 46979370
 Conc: 18.10 ng/ml



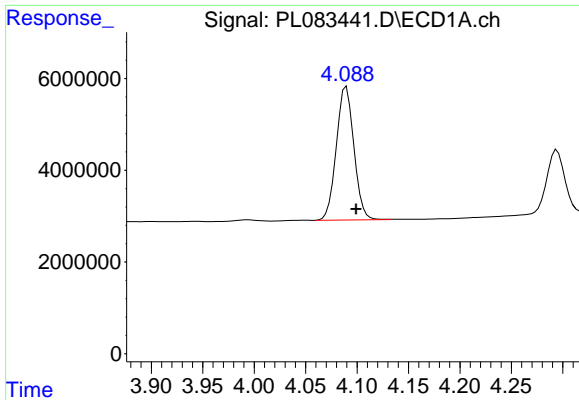
#2 alpha-BHC

R.T.: 3.762 min
 Delta R.T.: -0.010 min
 Response: 35828219
 Conc: 8.07 ng/ml



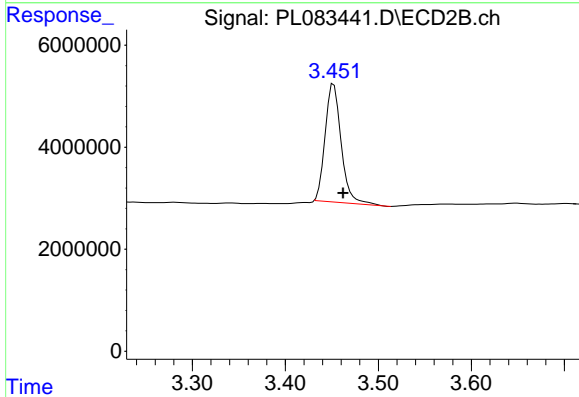
#2 alpha-BHC

R.T.: 3.126 min
 Delta R.T.: -0.009 min
 Response: 30986966
 Conc: 8.30 ng/ml

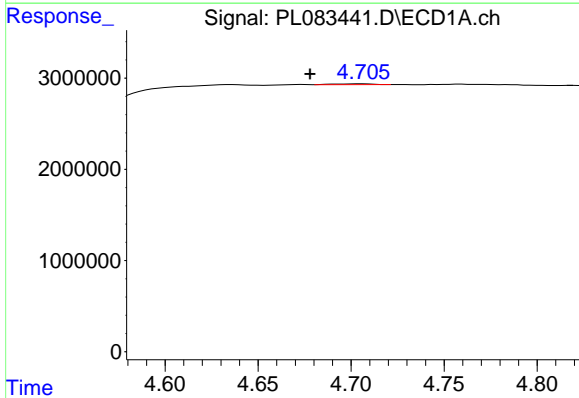


#3 gamma-BHC (Lindane)
 R.T.: 4.090 min
 Delta R.T.: -0.009 min
 Response: 34613045
 Conc: 8.35 ng/ml

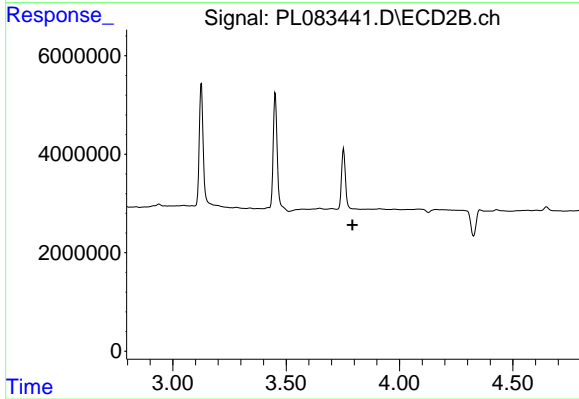
Instrument :
 ECD_L
 ClientSampleId :



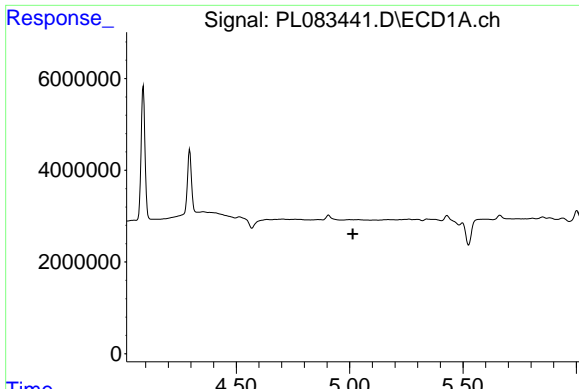
#3 gamma-BHC (Lindane)
 R.T.: 3.452 min
 Delta R.T.: -0.010 min
 Response: 27866356
 Conc: 8.36 ng/ml



#4 Heptachlor
 R.T.: 4.707 min
 Delta R.T.: 0.029 min
 Response: 130872
 Conc: 0.03 ng/ml



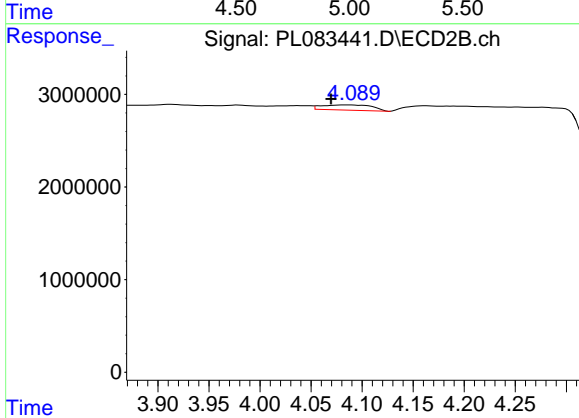
#4 Heptachlor
 R.T.: 0.000 min
 Exp R.T. : 3.793 min
 Response: 0
 Conc: N.D.



#5 Aldrin

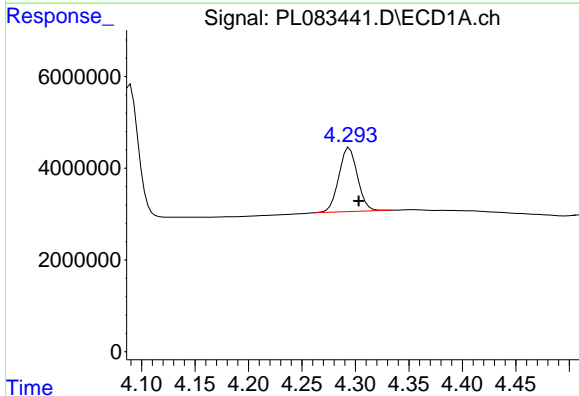
R.T.: 0.000 min
 Exp R.T.: 5.014 min
 Response: 0
 Conc: N.D.

Instrument :
 ECD_L
 ClientSampleId :



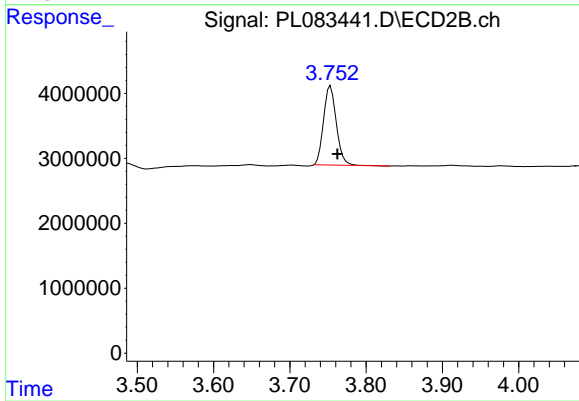
#5 Aldrin

R.T.: 4.087 min
 Delta R.T.: 0.017 min
 Response: 1938773
 Conc: 0.60 ng/ml



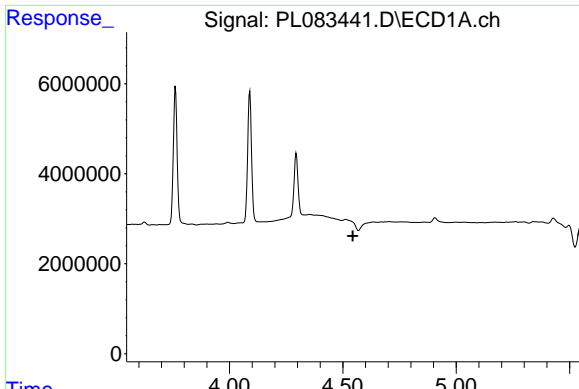
#6 beta-BHC

R.T.: 4.294 min
 Delta R.T.: -0.009 min
 Response: 16919880
 Conc: 8.99 ng/ml



#6 beta-BHC

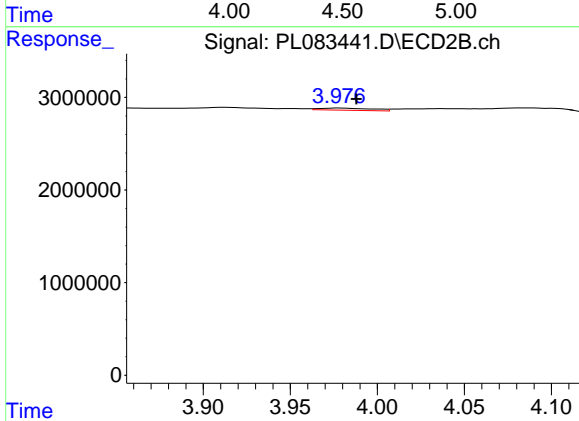
R.T.: 3.753 min
 Delta R.T.: -0.009 min
 Response: 14256131
 Conc: 9.97 ng/ml



#7 delta-BHC

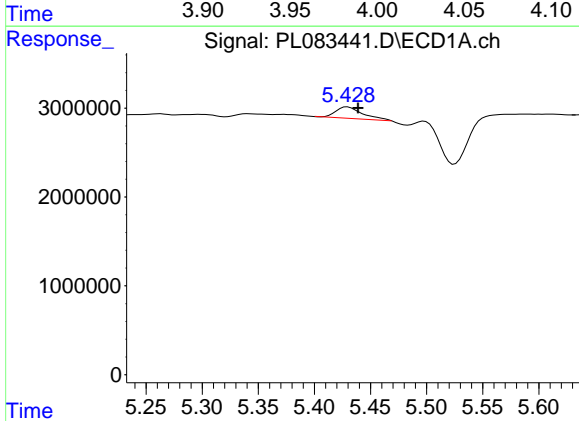
R.T.: 0.000 min
 Exp R.T.: 4.544 min
 Response: 0
 Conc: N.D.

Instrument :
 ECD_L
 ClientSampleId :



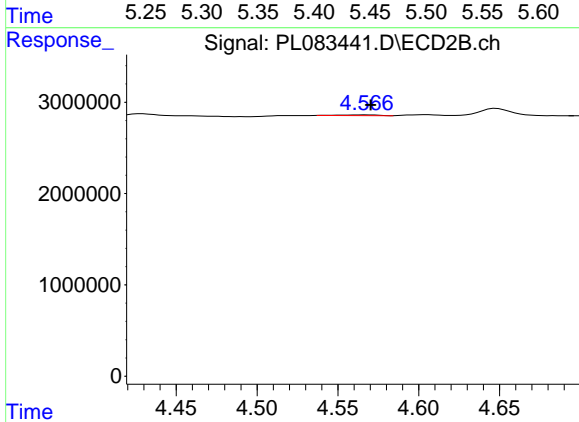
#7 delta-BHC

R.T.: 3.978 min
 Delta R.T.: -0.010 min
 Response: 476098
 Conc: 0.15 ng/ml



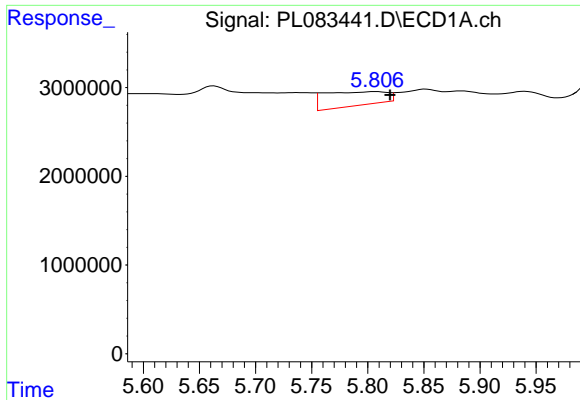
#8 Heptachlor epoxide

R.T.: 5.429 min
 Delta R.T.: -0.010 min
 Response: 2081646
 Conc: 0.65 ng/ml



#8 Heptachlor epoxide

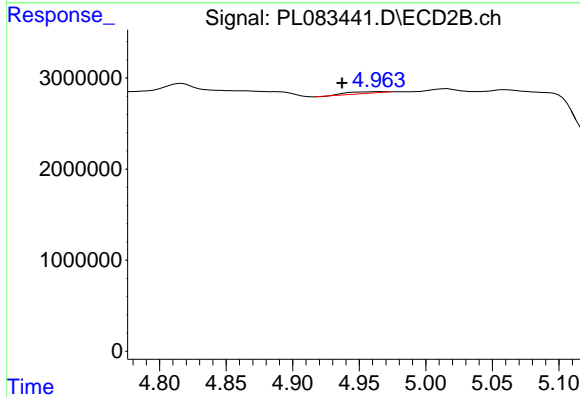
R.T.: 4.568 min
 Delta R.T.: -0.003 min
 Response: 127078
 Conc: 0.04 ng/ml



#9 Endosulfan I

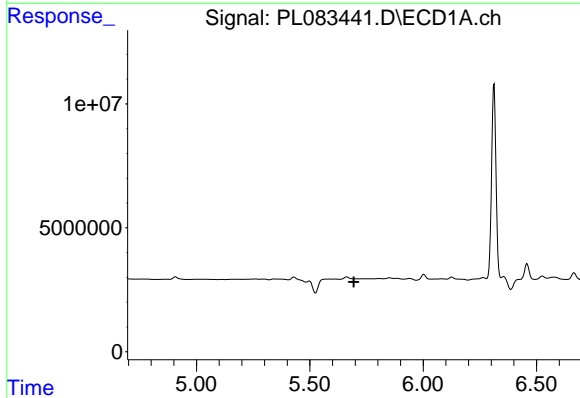
R.T.: 5.808 min
 Delta R.T.: -0.012 min
 Response: 6095537
 Conc: 2.03 ng/ml

Instrument :
 ECD_L
 ClientSampleId :



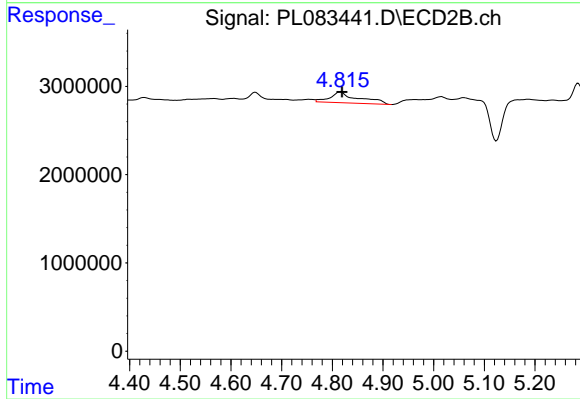
#9 Endosulfan I

R.T.: 4.965 min
 Delta R.T.: 0.028 min
 Response: 346608
 Conc: 0.12 ng/ml



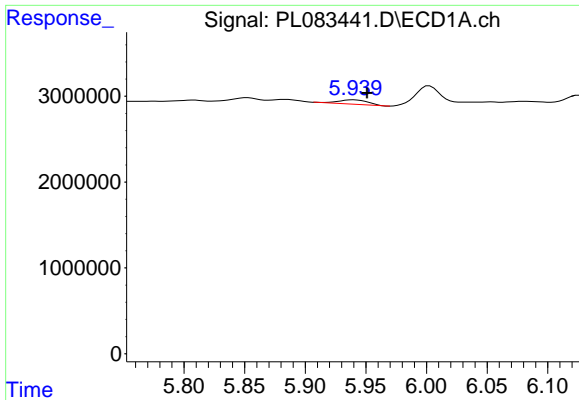
#10 gamma-Chlordane

R.T.: 0.000 min
 Exp R.T. : 5.694 min
 Response: 0
 Conc: N.D.



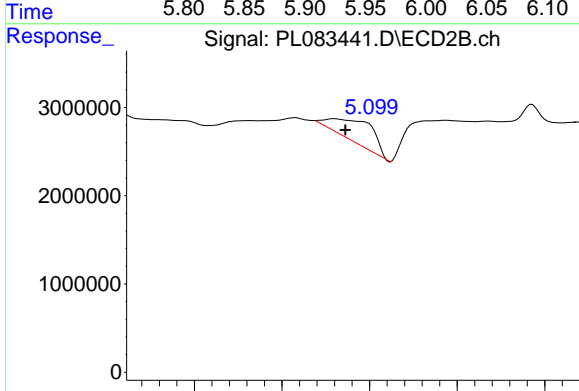
#10 gamma-Chlordane

R.T.: 4.817 min
 Delta R.T.: -0.002 min
 Response: 4845075
 Conc: 1.61 ng/ml

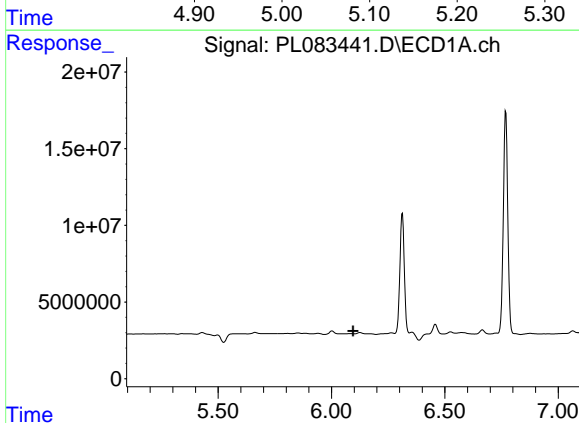


#12 4,4'-DDE
 R.T.: 5.940 min
 Delta R.T.: -0.011 min
 Response: 866661
 Conc: 0.31 ng/ml

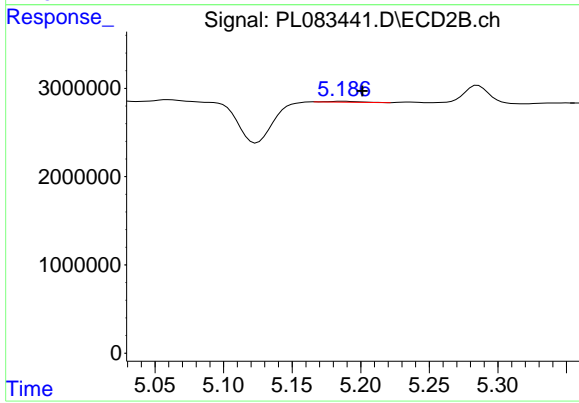
Instrument :
 ECD_L
 ClientSampleId :



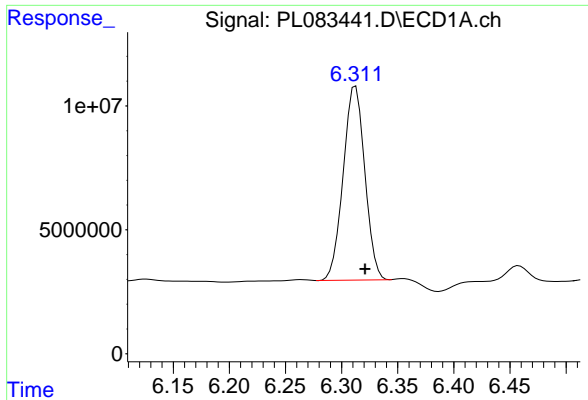
#12 4,4'-DDE
 R.T.: 5.060 min
 Delta R.T.: -0.012 min
 Response: 8547264
 Conc: 3.52 ng/ml



#13 Dieldrin
 R.T.: 0.000 min
 Exp R.T. : 6.095 min
 Response: 0
 Conc: N.D.

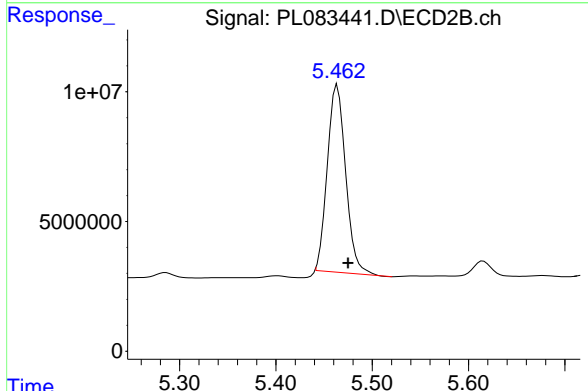


#13 Dieldrin
 R.T.: 5.187 min
 Delta R.T.: -0.014 min
 Response: 146464
 Conc: 0.05 ng/ml

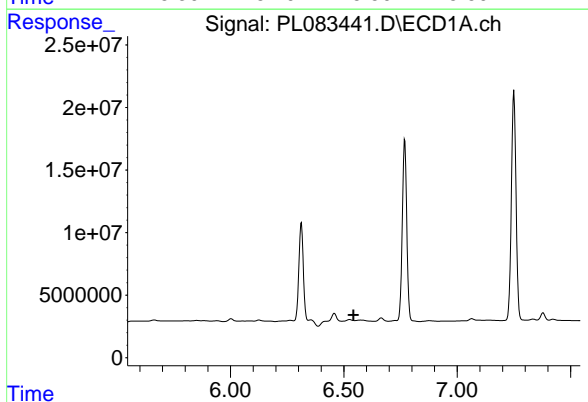


#14 Endrin
 R.T.: 6.313 min
 Delta R.T.: -0.008 min
 Response: 104902960
 Conc: 39.04 ng/ml

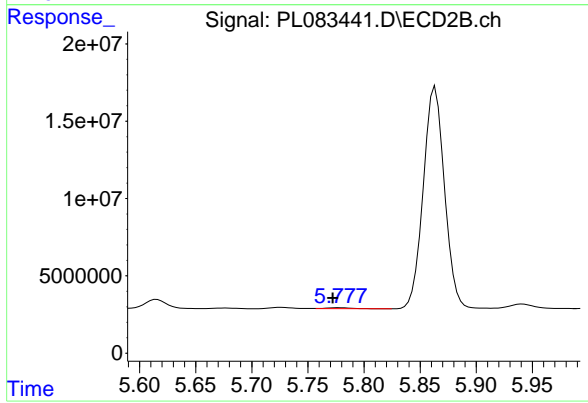
Instrument :
 ECD_L
 ClientSampleId :



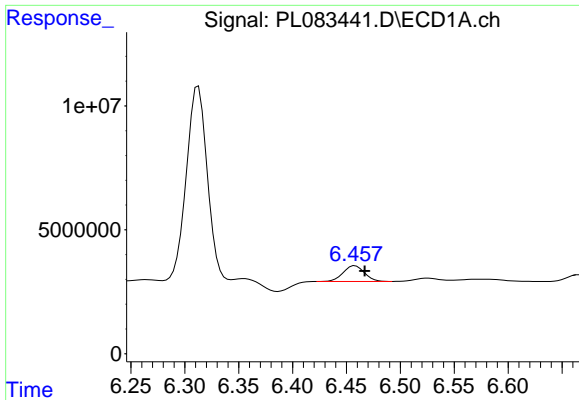
#14 Endrin
 R.T.: 5.464 min
 Delta R.T.: -0.011 min
 Response: 95614147
 Conc: 37.69 ng/ml



#15 Endosulfan II
 R.T.: 6.525 min
 Delta R.T.: -0.018 min
 Response: 1318963
 Conc: N.D.



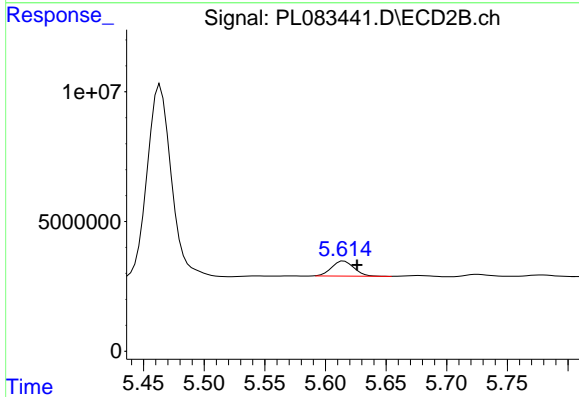
#15 Endosulfan II
 R.T.: 5.778 min
 Delta R.T.: 0.006 min
 Response: 804031
 Conc: 0.32 ng/ml



#16 4,4'-DDD

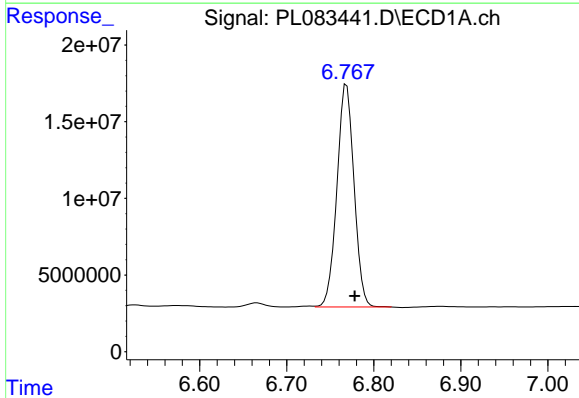
R.T.: 6.458 min
 Delta R.T.: -0.009 min
 Response: 8714010
 Conc: 4.01 ng/ml

Instrument :
 ECD_L
 ClientSampleId :



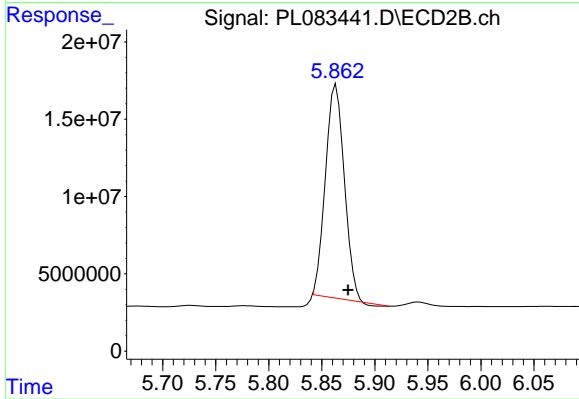
#16 4,4'-DDD

R.T.: 5.615 min
 Delta R.T.: -0.011 min
 Response: 7386869
 Conc: 3.84 ng/ml



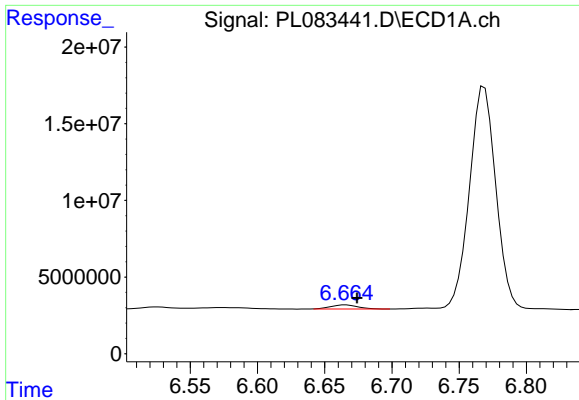
#17 4,4'-DDT

R.T.: 6.769 min
 Delta R.T.: -0.009 min
 Response: 198275820
 Conc: 79.21 ng/ml



#17 4,4'-DDT

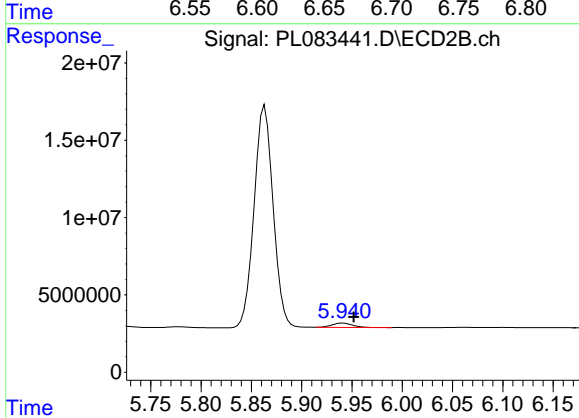
R.T.: 5.864 min
 Delta R.T.: -0.011 min
 Response: 170459333
 Conc: 76.40 ng/ml



#18 Endrin aldehyde

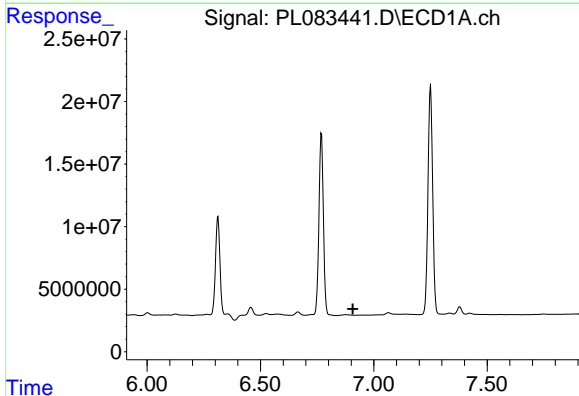
R.T.: 6.666 min
 Delta R.T.: -0.008 min
 Response: 3650723
 Conc: 1.82 ng/ml

Instrument :
 ECD_L
 ClientSampleId :



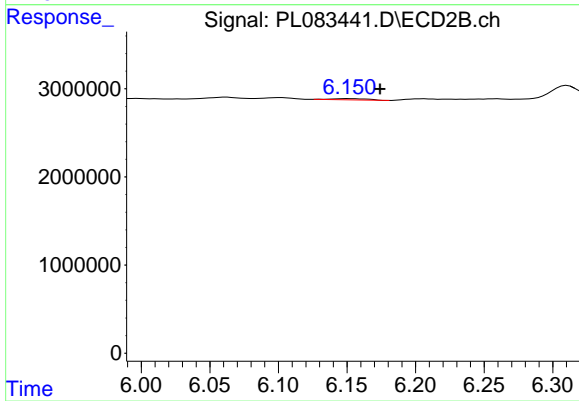
#18 Endrin aldehyde

R.T.: 5.941 min
 Delta R.T.: -0.010 min
 Response: 3824540
 Conc: 1.93 ng/ml



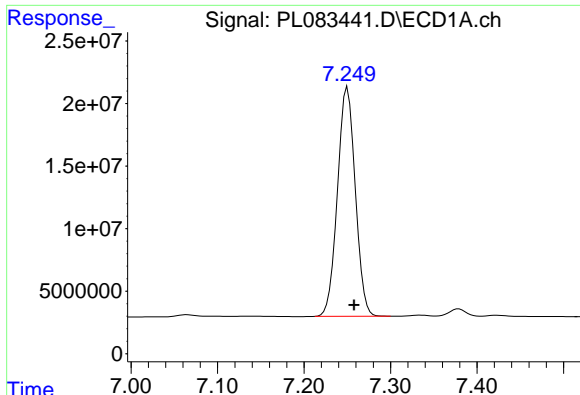
#19 Endosulfan Sulfate

R.T.: 0.000 min
 Exp R.T. : 6.908 min
 Response: 0
 Conc: N.D.



#19 Endosulfan Sulfate

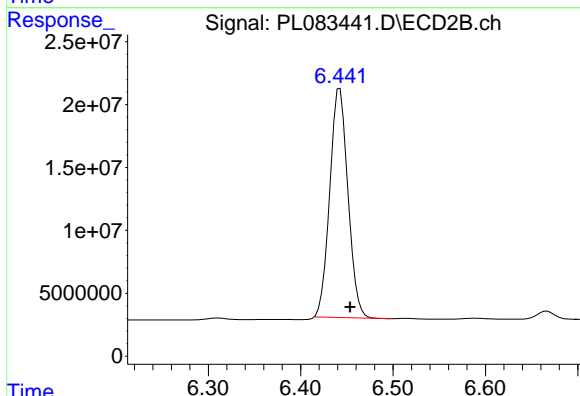
R.T.: 6.152 min
 Delta R.T.: -0.023 min
 Response: 257497
 Conc: 0.11 ng/ml



#20 Methoxychlor

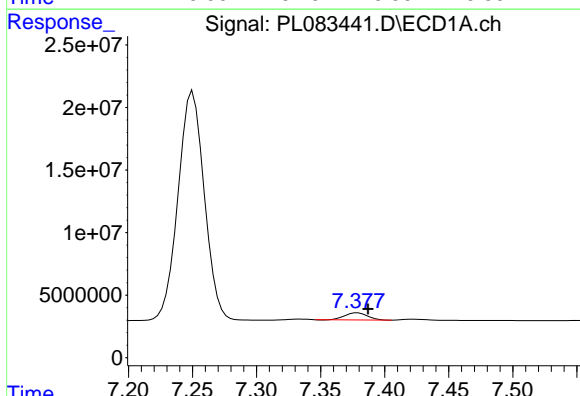
R.T.: 7.250 min
 Delta R.T.: -0.008 min
 Response: 260647722
 Conc: 197.11 ng/ml

Instrument :
 ECD_L
 ClientSampleId :



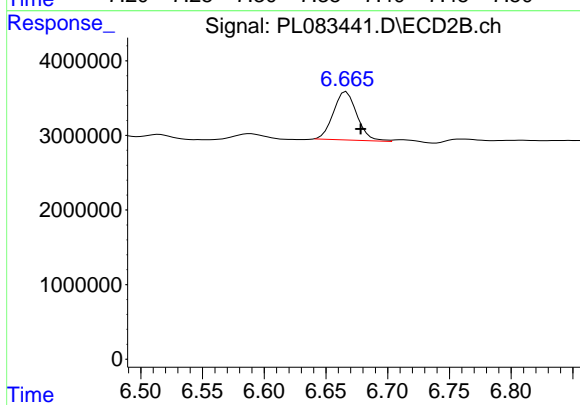
#20 Methoxychlor

R.T.: 6.442 min
 Delta R.T.: -0.011 min
 Response: 248552530
 Conc: 195.44 ng/ml



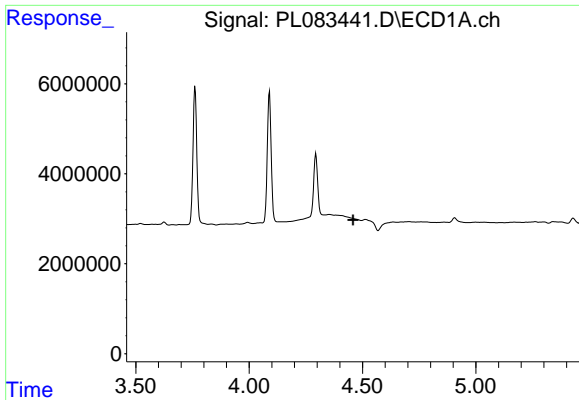
#21 Endrin ketone

R.T.: 7.379 min
 Delta R.T.: -0.008 min
 Response: 6965943
 Conc: 2.73 ng/ml



#21 Endrin ketone

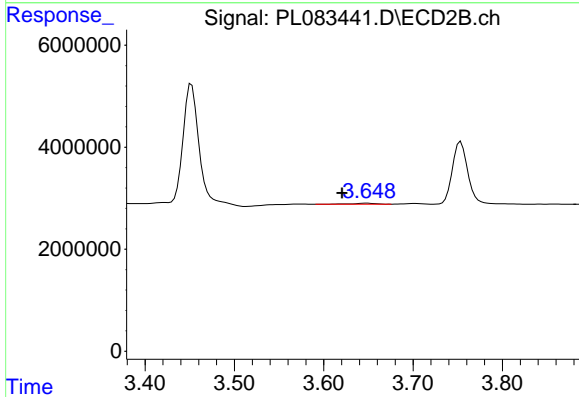
R.T.: 6.666 min
 Delta R.T.: -0.012 min
 Response: 8619375
 Conc: 3.19 ng/ml



#23 Chlordane-1

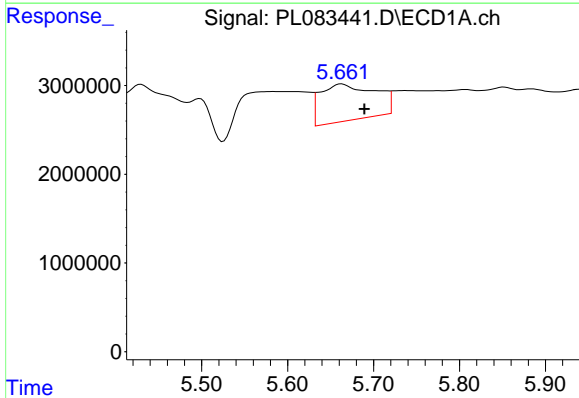
R.T.: 0.000 min
 Exp R.T.: 4.458 min
 Response: 0
 Conc: N.D.

Instrument :
 ECD_L
 ClientSampleId :



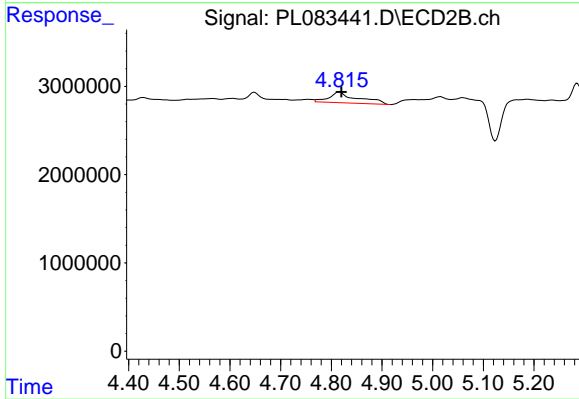
#23 Chlordane-1

R.T.: 3.648 min
 Delta R.T.: 0.028 min
 Response: 372850
 Conc: 4.52 ng/ml



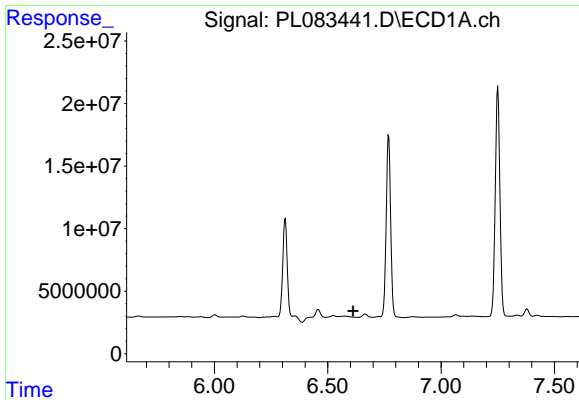
#25 Chlordane-3

R.T.: 5.663 min
 Delta R.T.: -0.027 min
 Response: 18245002
 Conc: 43.97 ng/ml



#25 Chlordane-3

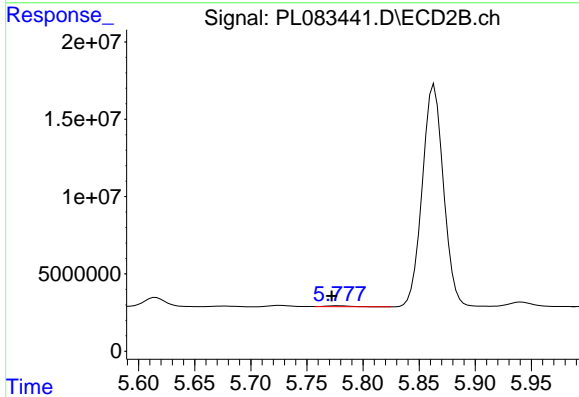
R.T.: 4.817 min
 Delta R.T.: -0.003 min
 Response: 4845075
 Conc: 18.18 ng/ml



#27 Chlordane-5

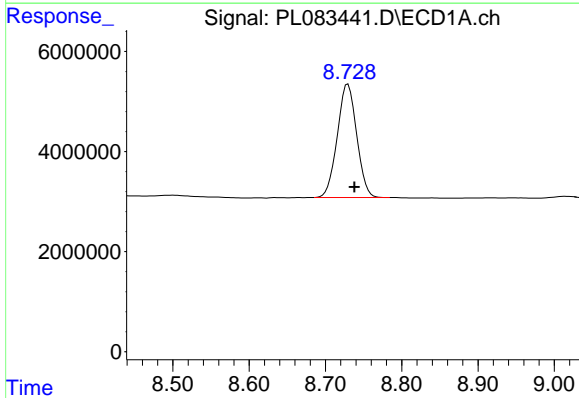
R.T.: 0.000 min
 Exp R.T.: 6.612 min
 Response: 0
 Conc: N.D.

Instrument :
 ECD_L
 ClientSampleId :



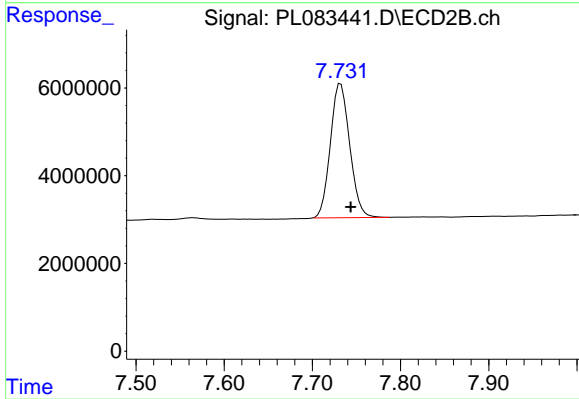
#27 Chlordane-5

R.T.: 5.778 min
 Delta R.T.: 0.006 min
 Response: 804031
 Conc: 8.28 ng/ml



#28 Decachlorobiphenyl

R.T.: 8.729 min
 Delta R.T.: -0.009 min
 Response: 40045807
 Conc: 19.09 ng/ml



#28 Decachlorobiphenyl

R.T.: 7.732 min
 Delta R.T.: -0.011 min
 Response: 46606024
 Conc: 18.74 ng/ml