

Data Path : Z:\pestpcbsrv\HPCHEM1\ECD_L\Data\PL061719\
 Data File : PL049556.D
 Signal(s) : Signal #1: ECD1A.ch Signal #2: ECD2B.ch
 Acq On : 17 Jun 2019 14:57
 Operator : SM\AJ
 Sample : K3376-01
 Misc :
 ALS Vial : 20 Sample Multiplier: 1

Instrument :
 ECD_L
 ClientSampleId :
 NEW-DOVER-TP

Integration File signal 1: autoint1.e
 Integration File signal 2: autoint2.e
 Quant Time: Jun 18 01:12:56 2019
 Quant Method : Z:\pestpcbsrv\HPCHEM1\ECD_L\methods\PL053019.M
 Quant Title : GC Extractables
 QLast Update : Fri May 31 01:35:35 2019
 Response via : Initial Calibration
 Integrator: ChemStation

Volume Inj. : 1 µl
 Signal #1 Phase : ZB-MR2 Signal #2 Phase: ZB-MR1
 Signal #1 Info : 30M x 0.32mm x0.2 Signal #2 Info : 30M x 0.32mm x0.5µm

Compound	RT#1	RT#2	Resp#1	Resp#2	ng/ml	ng/ml
----------	------	------	--------	--------	-------	-------

 System Monitoring Compounds

1) SA Tetrachlo...	3.324	3.935	86486215	24003166	7.849	8.308
28) SA Decachlor...	7.990	8.969	93741518	26084202	7.372	7.810

Target Compounds

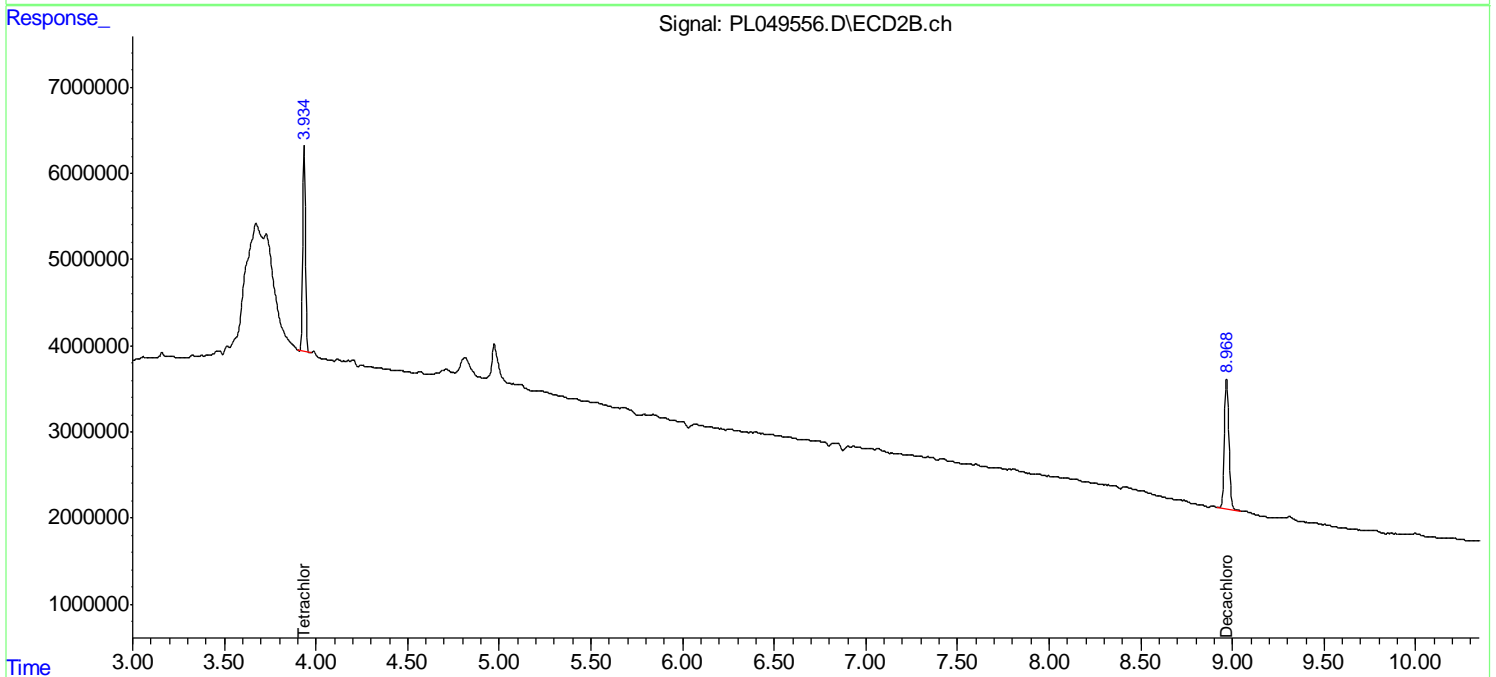
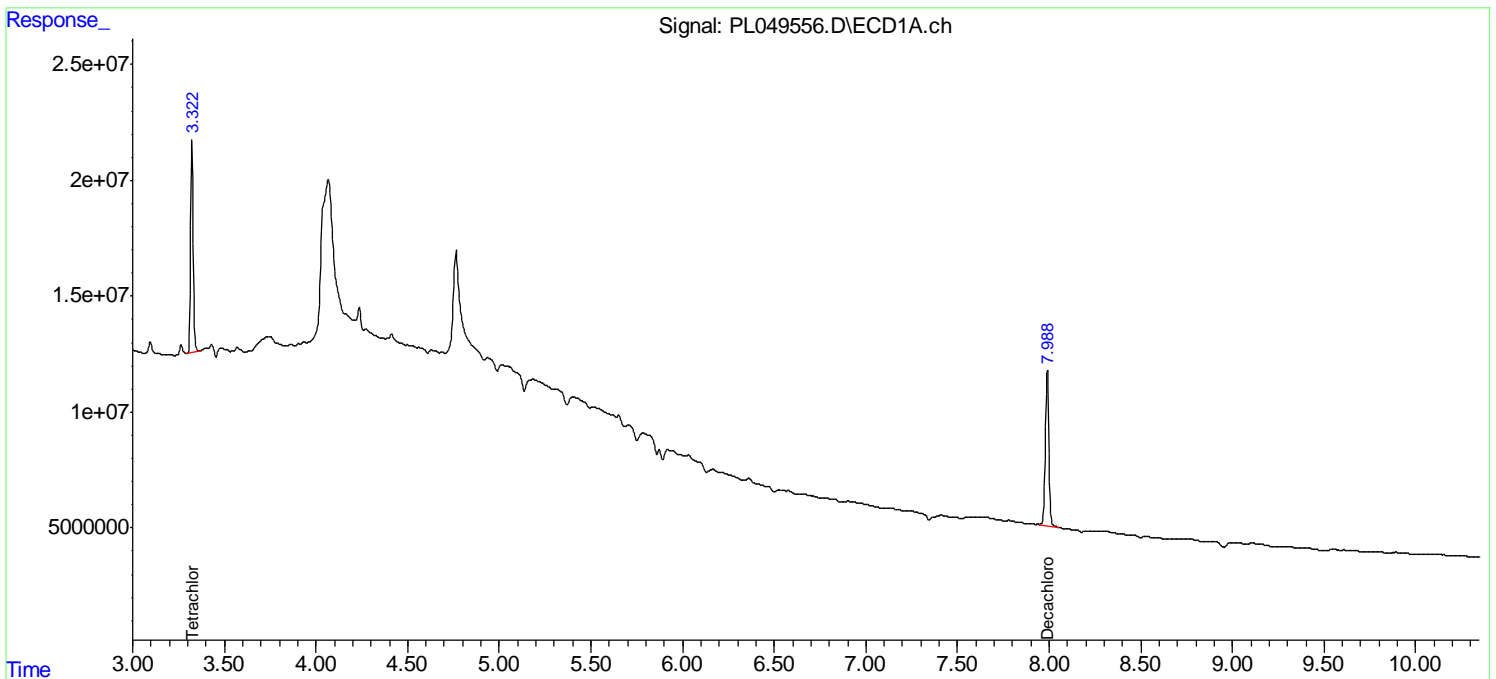
(f)=RT Delta > 1/2 Window (#)=Amounts differ by > 25% (m)=manual int.

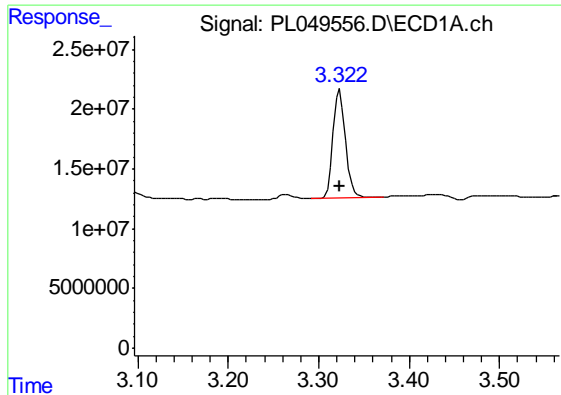
Data Path : Z:\pestpcbsrv\HPCHEM1\ECD_L\Data\PL061719\
 Data File : PL049556.D
 Signal(s) : Signal #1: ECD1A.ch Signal #2: ECD2B.ch
 Acq On : 17 Jun 2019 14:57
 Operator : SM\AJ
 Sample : K3376-01
 Misc :
 ALS Vial : 20 Sample Multiplier: 1

Instrument :
 ECD_L
 ClientSampleId :
 NEW-DOVER-TP

Integration File signal 1: autoint1.e
 Integration File signal 2: autoint2.e
 Quant Time: Jun 18 01:12:56 2019
 Quant Method : Z:\pestpcbsrv\HPCHEM1\ECD_L\methods\PL053019.M
 Quant Title : GC Extractables
 QLast Update : Fri May 31 01:35:35 2019
 Response via : Initial Calibration
 Integrator: ChemStation

Volume Inj. : 1 µl
 Signal #1 Phase : ZB-MR2 Signal #2 Phase: ZB-MR1
 Signal #1 Info : 30M x 0.32mm x0.2 Signal #2 Info : 30M x 0.32mm x0.5µm

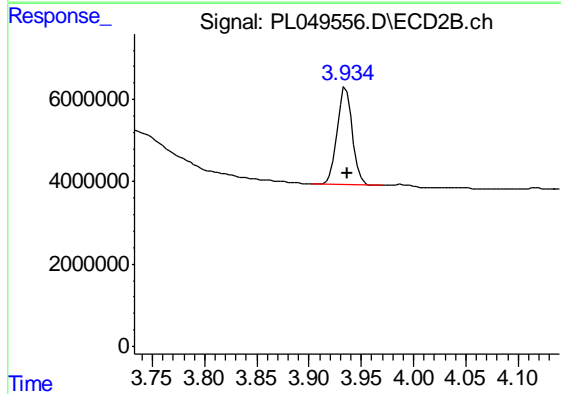




#1 Tetrachloro-m-xylene

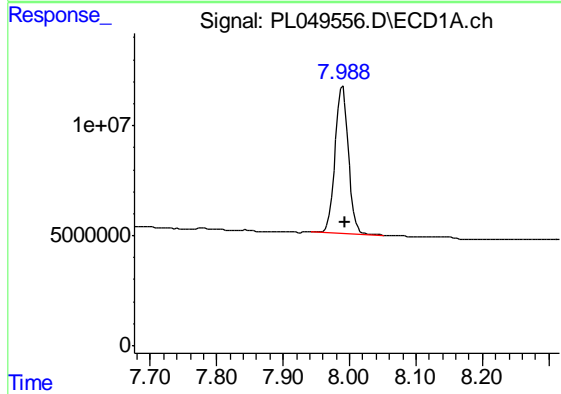
R.T.: 3.324 min
 Delta R.T.: 0.000 min
 Response: 86486215
 Conc: 7.85 ng/ml

Instrument :
 ECD_L
 ClientSampleId :
 NEW-DOVER-TP



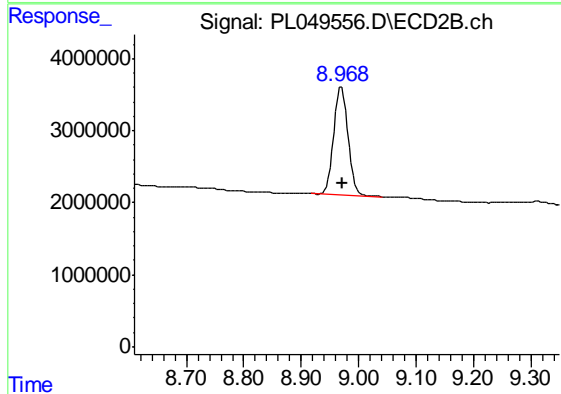
#1 Tetrachloro-m-xylene

R.T.: 3.935 min
 Delta R.T.: -0.001 min
 Response: 24003166
 Conc: 8.31 ng/ml



#28 Decachlorobiphenyl

R.T.: 7.990 min
 Delta R.T.: -0.003 min
 Response: 93741518
 Conc: 7.37 ng/ml



#28 Decachlorobiphenyl

R.T.: 8.969 min
 Delta R.T.: -0.003 min
 Response: 26084202
 Conc: 7.81 ng/ml