

Data Path : Z:\pestpcbsrv\HPCHEM1\ECD_L\Data\PL061721\
 Data File : PL067598.D
 Signal(s) : Signal #1: ECD1A.ch Signal #2: ECD2B.ch
 Acq On : 18 Jun 2021 00:35
 Operator : AR\AJ
 Sample : M2737-01
 Misc :
 ALS Vial : 41 Sample Multiplier: 1

Instrument :
 ECD_L
 ClientSampleId :
 SU-03-061621

Integration File signal 1: autoint1.e
 Integration File signal 2: autoint2.e
 Quant Time: Jun 18 04:41:44 2021
 Quant Method : Z:\pestpcbsrv\HPCHEM1\ECD_L\methods\PL061021.M
 Quant Title : GC Extractables
 QLast Update : Fri Jun 11 02:00:12 2021
 Response via : Initial Calibration
 Integrator: ChemStation

Volume Inj. : 1 µl
 Signal #1 Phase : ZB-MR2 Signal #2 Phase: ZB-MR1
 Signal #1 Info : 30M x 0.32mm x0.2 Signal #2 Info : 30M x 0.32mm x0.5µm

Compound	RT#1	RT#2	Resp#1	Resp#2	ng/ml	ng/ml

System Monitoring Compounds						
1) SA Tetrachlo...	4.478	5.528	5738056	10039616	10.437	10.649
28) SA Decachlor...	10.218	11.426	8064813	13476399	11.380	13.530
Target Compounds						
12) B 4,4'-DDE	7.467	8.524	1220104	1036426	1.834	1.144 #
17) MA 4,4'-DDT	8.307	9.383	683228	766973	1.174	1.046

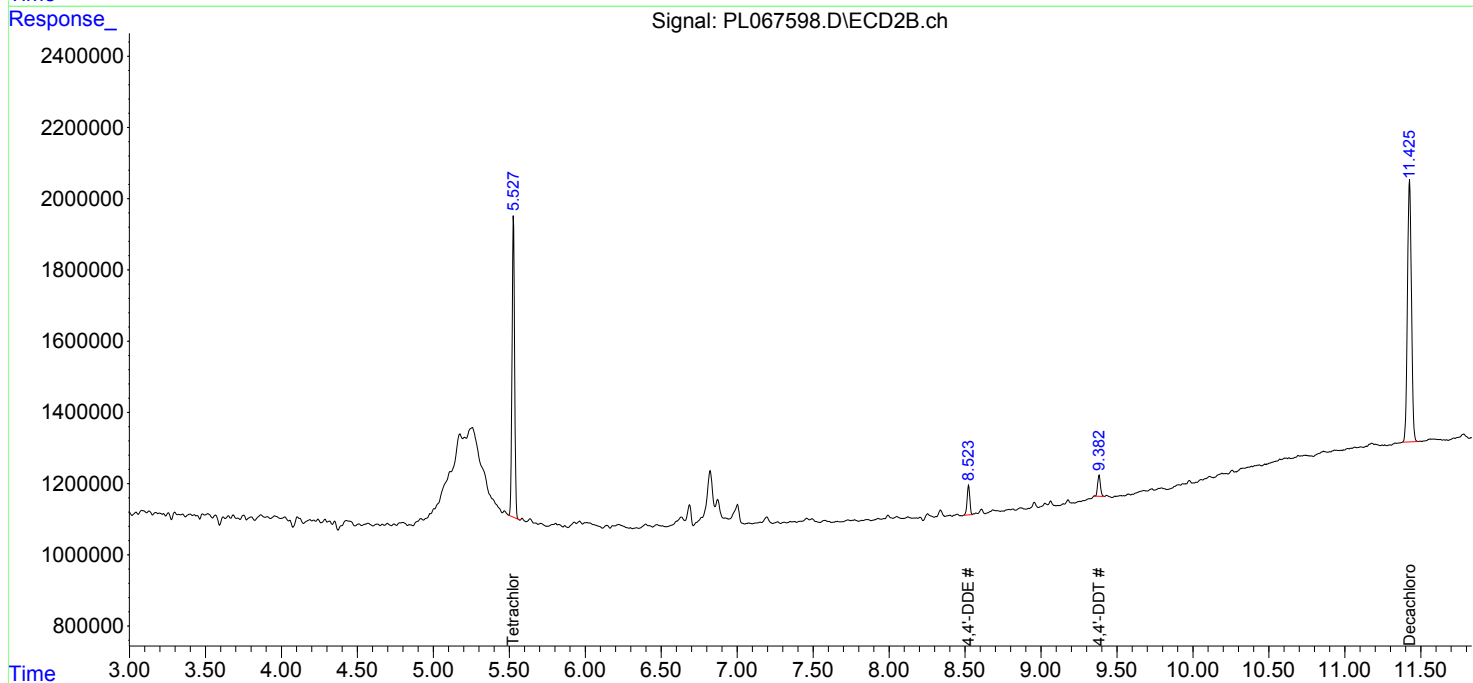
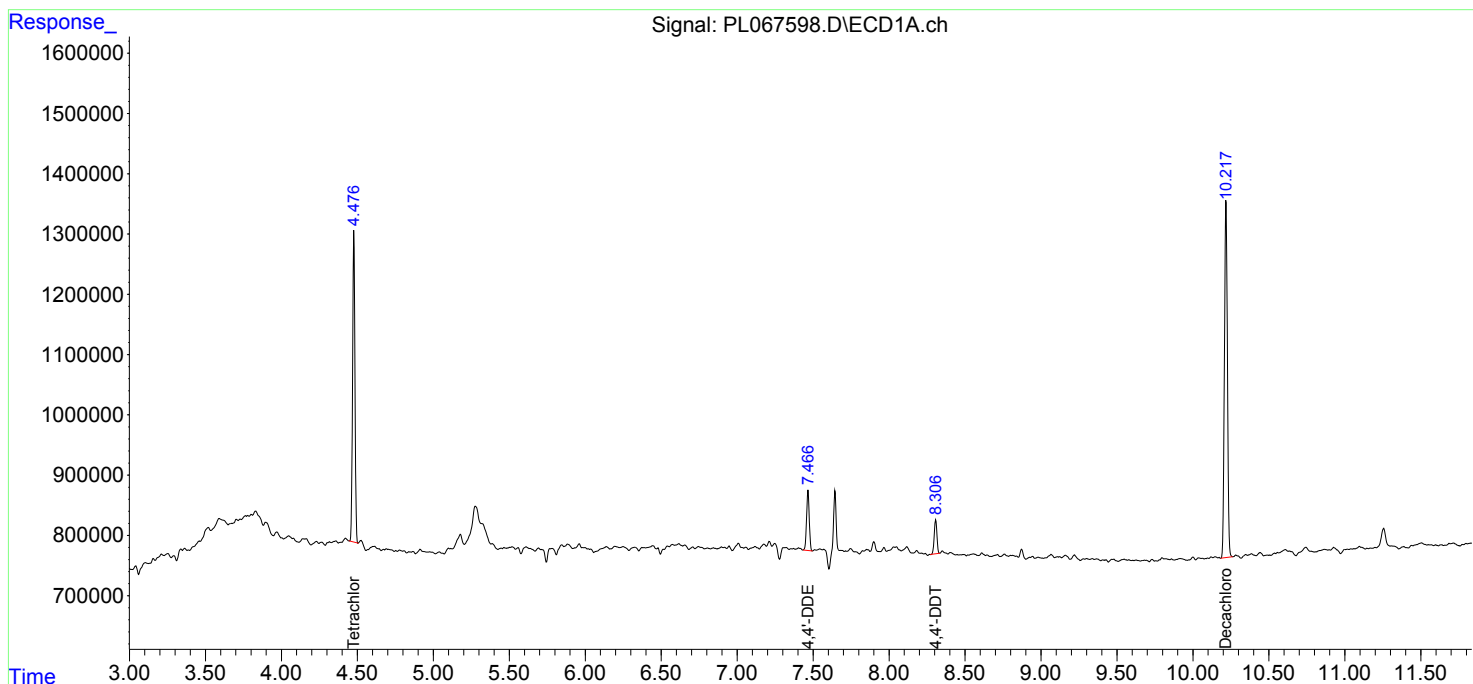
(f)=RT Delta > 1/2 Window (#)=Amounts differ by > 25% (m)=manual int.

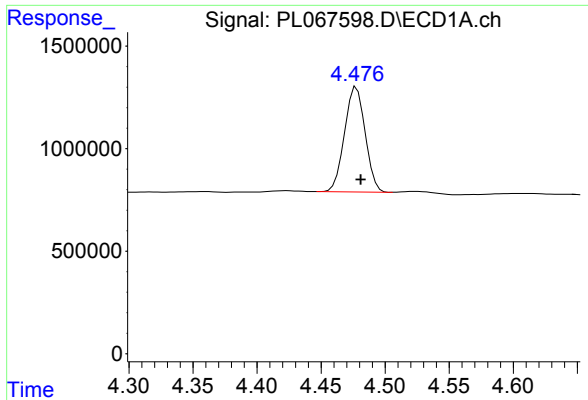
Data Path : Z:\pestpcbsrv\HPCHEM1\ECD_L\Data\PL061721\
 Data File : PL067598.D
 Signal(s) : Signal #1: ECD1A.ch Signal #2: ECD2B.ch
 Acq On : 18 Jun 2021 00:35
 Operator : AR\AJ
 Sample : M2737-01
 Misc :
 ALS Vial : 41 Sample Multiplier: 1

Instrument :
 ECD_L
 ClientSampled :
 SU-03-061621

Integration File signal 1: autoint1.e
 Integration File signal 2: autoint2.e
 Quant Time: Jun 18 04:41:44 2021
 Quant Method : Z:\pestpcbsrv\HPCHEM1\ECD_L\methods\PL061021.M
 Quant Title : GC Extractables
 QLast Update : Fri Jun 11 02:00:12 2021
 Response via : Initial Calibration
 Integrator: ChemStation

Volume Inj. : 1 µl
 Signal #1 Phase : ZB-MR2 Signal #2 Phase: ZB-MR1
 Signal #1 Info : 30M x 0.32mm x0.2 Signal #2 Info : 30M x 0.32mm x0.5µm

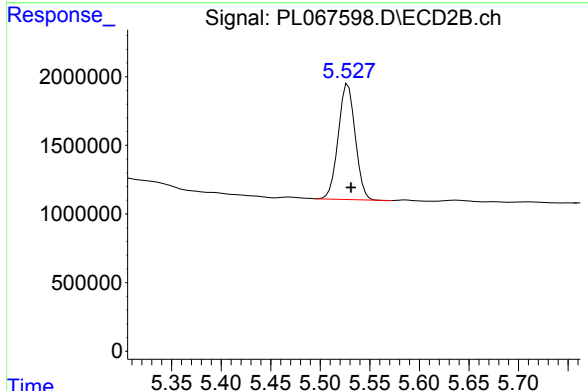




#1 Tetrachloro-m-xylene

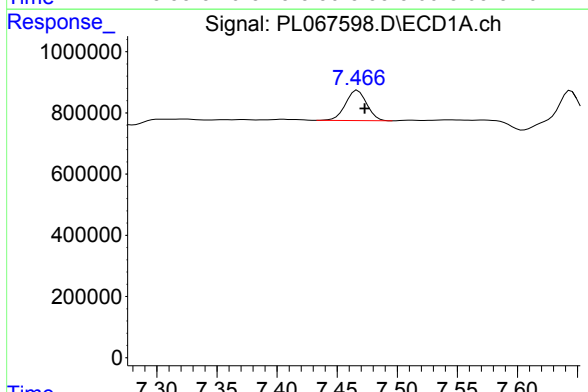
R.T.: 4.478 min
 Delta R.T.: -0.003 min
 Response: 5738056
 Conc: 10.44 ng/ml

Instrument :
 ECD_L
 ClientSampleId :
 SU-03-061621



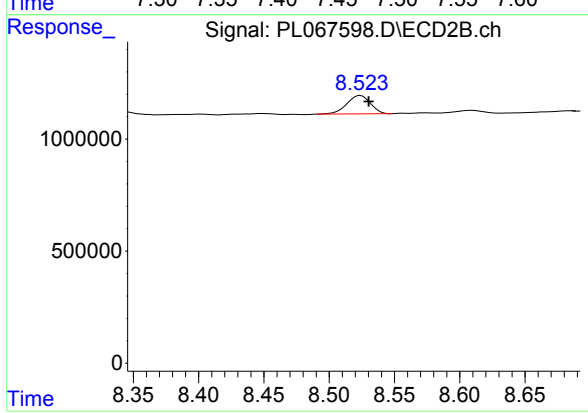
#1 Tetrachloro-m-xylene

R.T.: 5.528 min
 Delta R.T.: -0.003 min
 Response: 10039616
 Conc: 10.65 ng/ml



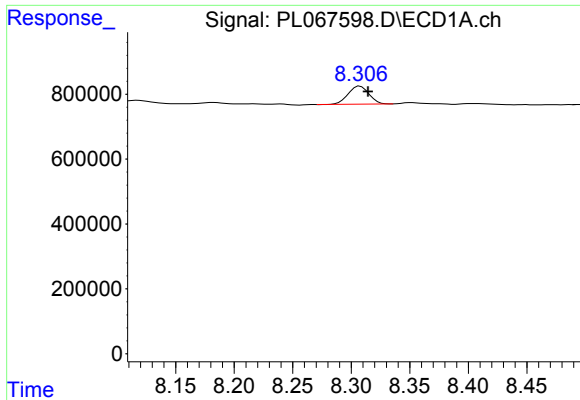
#12 4,4'-DDE

R.T.: 7.467 min
 Delta R.T.: -0.006 min
 Response: 1220104
 Conc: 1.83 ng/ml



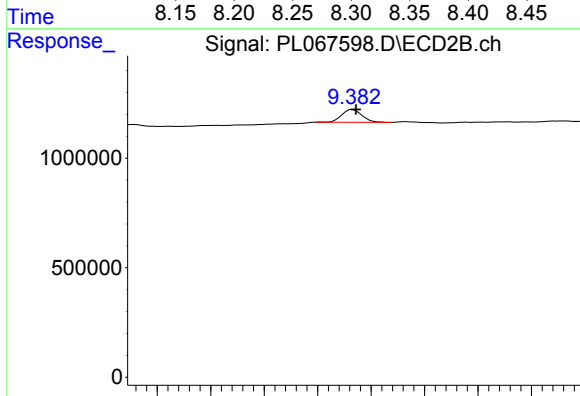
#12 4,4'-DDE

R.T.: 8.524 min
 Delta R.T.: -0.006 min
 Response: 1036426
 Conc: 1.14 ng/ml

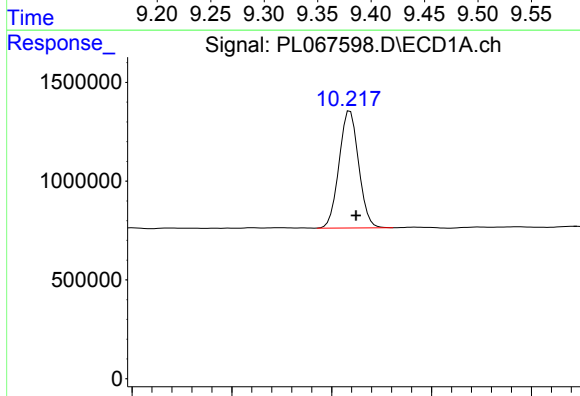


#17 4,4'-DDT
 R.T.: 8.307 min
 Delta R.T.: -0.007 min
 Response: 683228
 Conc: 1.17 ng/ml

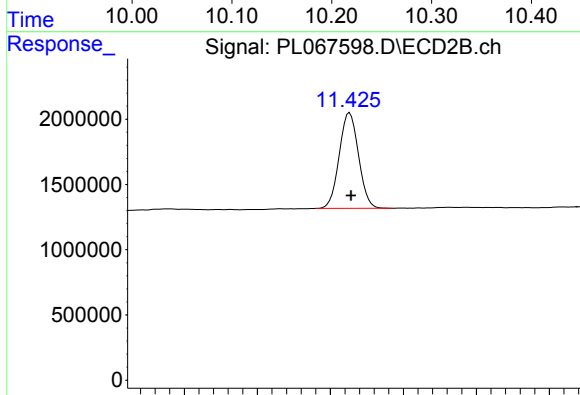
Instrument :
 ECD_L
 ClientSampleId :
 SU-03-061621



#17 4,4'-DDT
 R.T.: 9.383 min
 Delta R.T.: -0.003 min
 Response: 766973
 Conc: 1.05 ng/ml



#28 Decachlorobiphenyl
 R.T.: 10.218 min
 Delta R.T.: -0.006 min
 Response: 8064813
 Conc: 11.38 ng/ml



#28 Decachlorobiphenyl
 R.T.: 11.426 min
 Delta R.T.: -0.002 min
 Response: 13476399
 Conc: 13.53 ng/ml