

Data Path : Z:\pestpcbsrv\HPCHEM1\ECD_L\Data\PL061723\
 Data File : PL083514.D
 Signal(s) : Signal #1: ECD1A.ch Signal #2: ECD2B.ch
 Acq On : 17 Jun 2023 06:57
 Operator : AR\AJ
 Sample : PSTDICC100
 Misc :
 ALS Vial : 5 Sample Multiplier: 1

Instrument :
 ECD_L
 ClientSampleId :
 PSTDICC100

Integration File signal 1: autoint1.e
 Integration File signal 2: autoint2.e
 Quant Time: Jun 17 09:00:10 2023
 Quant Method : Z:\pestpcbsrv\HPCHEM1\ECD_L\methods\PL061723.M
 Quant Title : GC Extractables
 QLast Update : Sat Jun 17 08:56:12 2023
 Response via : Initial Calibration
 Integrator: ChemStation

Volume Inj. : 1 µl
 Signal #1 Phase : ZB-MR2 Signal #2 Phase: ZB-MR1
 Signal #1 Info : 30M x 0.32mm x0.2 Signal #2 Info : 30M x 0.32mm x0.5µm

Compound	RT#1	RT#2	Resp#1	Resp#2	ng/ml	ng/ml

System Monitoring Compounds						
1) SA Tetrachlo...	3.451	2.752	221.7E6	235.2E6	97.833	97.971
28) SA Decachlor...	8.992	7.964	189.7E6	237.8E6	102.080	95.969
Target Compounds						
2) A alpha-BHC	3.908	3.263	335.2E6	369.1E6	102.264	103.392
3) MA gamma-BHC...	4.242	3.596	302.8E6	345.3E6	100.794	102.008
4) MA Heptachlor	4.834	3.943	281.6E6	323.7E6	98.763	100.234
5) MB Aldrin	5.176	4.226	269.4E6	321.9E6	100.028	101.818
6) B beta-BHC	4.440	3.898	127.4E6	148.2E6	95.113	96.504
7) B delta-BHC	4.687	4.130	294.9E6	350.5E6	101.809	103.066
8) B Heptachlo...	5.605	4.736	244.4E6	296.1E6	95.128	99.442
9) A Endosulfan I	5.990	5.109	225.1E6	275.4E6	98.815	99.121
10) B gamma-Chl...	5.861	4.990	245.8E6	306.2E6	99.582	100.116
11) B alpha-Chl...	5.942	5.055	240.5E6	303.1E6	98.994	99.210
12) B 4,4'-DDE	6.121	5.252	217.9E6	278.5E6	103.407	103.824
13) MA Dieldrin	6.267	5.377	234.9E6	296.0E6	101.958	101.767
14) MA Endrin	6.496	5.653	186.4E6	242.2E6	100.858	99.557
15) B Endosulfa...	6.717	5.950	193.1E6	246.7E6	100.616	101.864
16) A 4,4'-DDD	6.639	5.811	182.7E6	237.9E6	103.100	102.888
17) MA 4,4'-DDT	6.954	6.064	184.2E6	227.0E6	104.501	103.086
18) B Endrin al...	6.848	6.132	151.6E6	189.3E6	99.636	97.737
19) B Endosulfa...	7.083	6.357	199.1E6	244.1E6	101.382	98.308
20) A Methoxychlor	7.435	6.650	94855892	119.3E6	101.233	95.271
21) B Endrin ke...	7.567	6.864	226.9E6	289.9E6	103.125	99.938
22) Mirex	8.042	7.051	180.2E6	228.8E6	99.118	94.497

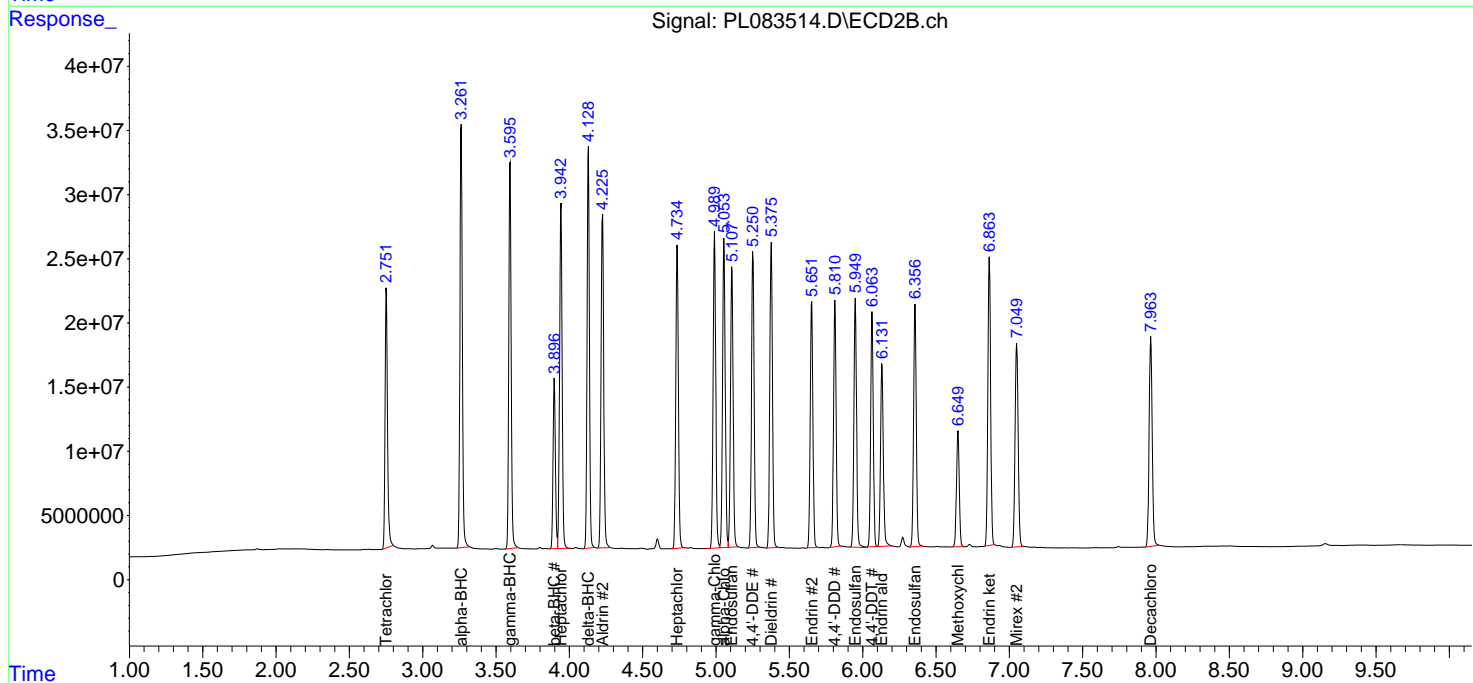
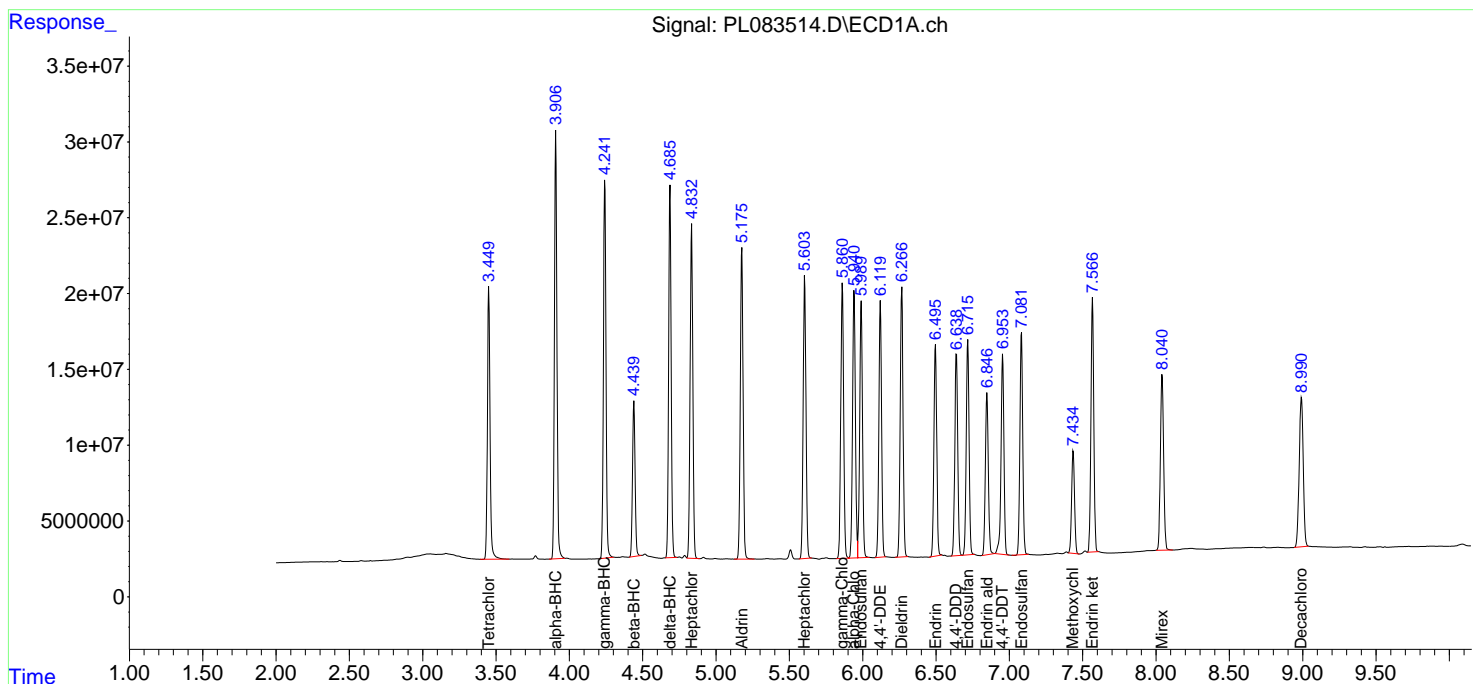
(f)=RT Delta > 1/2 Window (#)=Amounts differ by > 25% (m)=manual int.

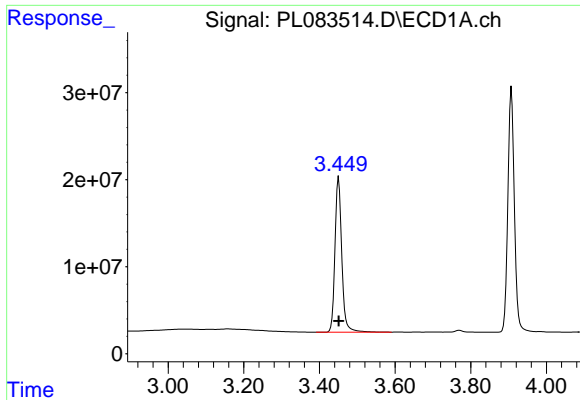
Data Path : Z:\pestpcbsrv\HPCHEM1\ECD_L\Data\PL061723\
 Data File : PL083514.D
 Signal(s) : Signal #1: ECD1A.ch Signal #2: ECD2B.ch
 Acq On : 17 Jun 2023 06:57
 Operator : AR\AJ
 Sample : PSTDICC100
 Misc :
 ALS Vial : 5 Sample Multiplier: 1

Instrument :
 ECD_L
 ClientSampleId :
 PSTDICC100

Integration File signal 1: autoint1.e
 Integration File signal 2: autoint2.e
 Quant Time: Jun 17 09:00:10 2023
 Quant Method : Z:\pestpcbsrv\HPCHEM1\ECD_L\methods\PL061723.M
 Quant Title : GC Extractables
 QLast Update : Sat Jun 17 08:56:12 2023
 Response via : Initial Calibration
 Integrator: ChemStation

Volume Inj. : 1 µl
 Signal #1 Phase : ZB-MR2 Signal #2 Phase: ZB-MR1
 Signal #1 Info : 30M x 0.32mm x0.2 Signal #2 Info : 30M x 0.32mm x0.5µm

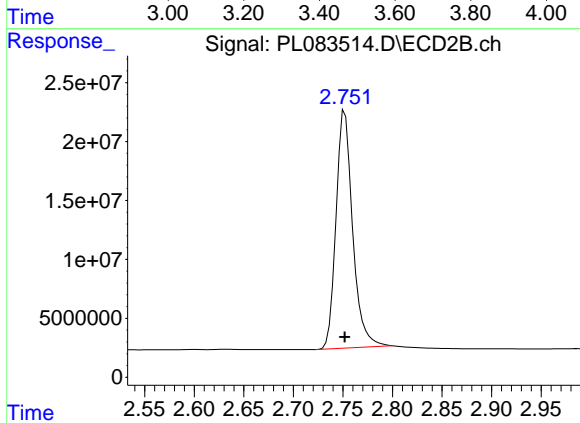




#1 Tetrachloro-m-xylene

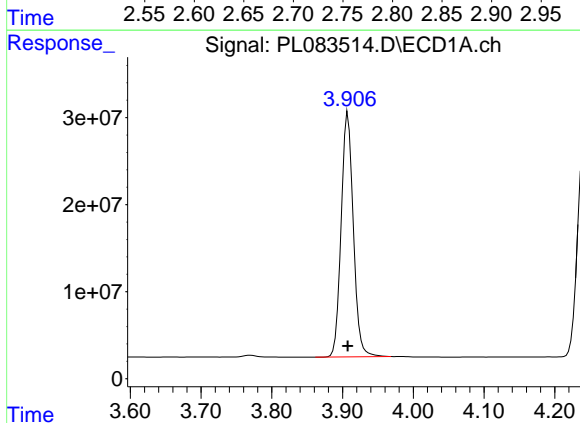
R.T.: 3.451 min
 Delta R.T.: 0.000 min
 Response: 221700798
 Conc: 97.83 ng/ml

Instrument :
 ECD_L
 ClientSampleId :
 PSTDICC100



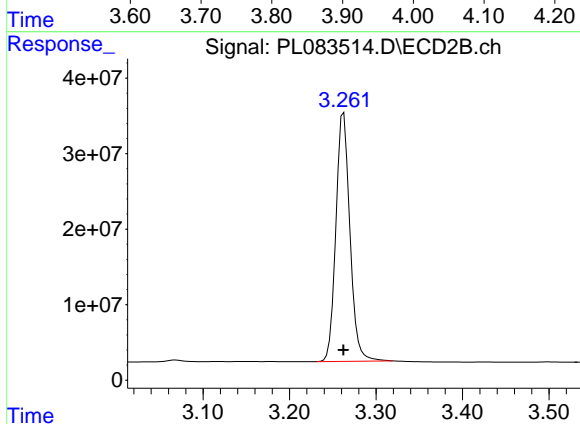
#1 Tetrachloro-m-xylene

R.T.: 2.752 min
 Delta R.T.: 0.000 min
 Response: 235151207
 Conc: 97.97 ng/ml



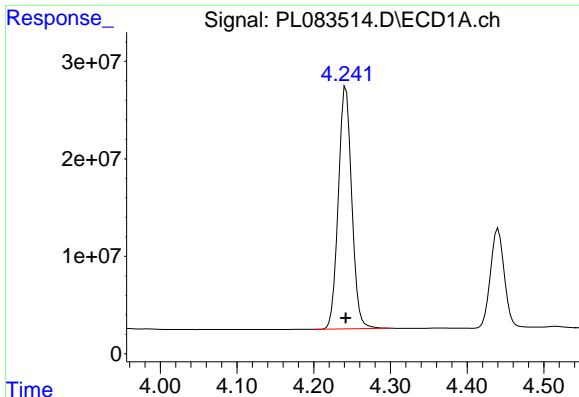
#2 alpha-BHC

R.T.: 3.908 min
 Delta R.T.: 0.000 min
 Response: 335245448
 Conc: 102.26 ng/ml



#2 alpha-BHC

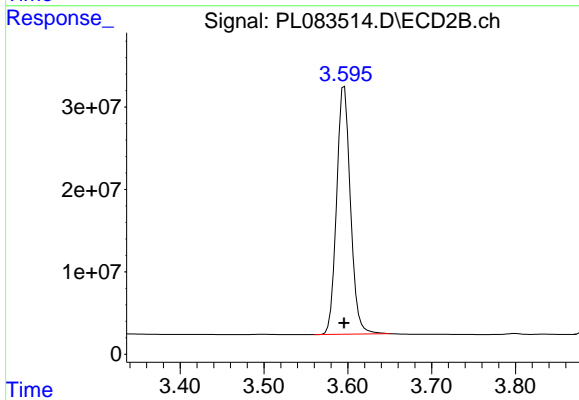
R.T.: 3.263 min
 Delta R.T.: 0.000 min
 Response: 369086361
 Conc: 103.39 ng/ml



#3 gamma-BHC (Lindane)

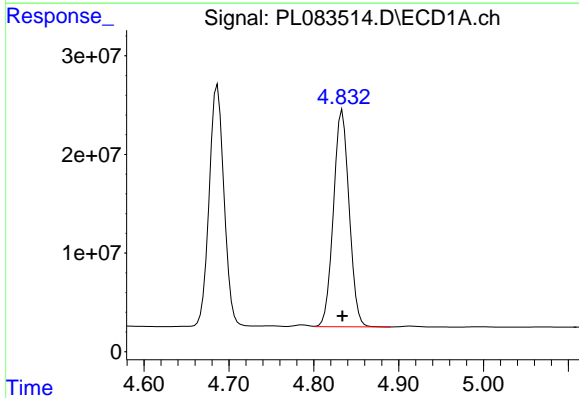
R.T.: 4.242 min
 Delta R.T.: 0.000 min
 Response: 302815180
 Conc: 100.79 ng/ml

Instrument :
 ECD_L
 ClientSampleId :
 PSTDICC100



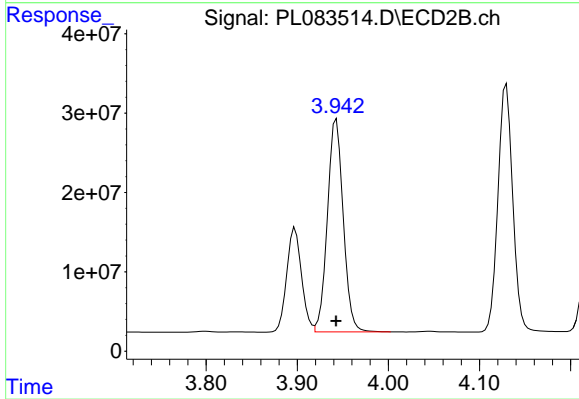
#3 gamma-BHC (Lindane)

R.T.: 3.596 min
 Delta R.T.: 0.000 min
 Response: 345278251
 Conc: 102.01 ng/ml



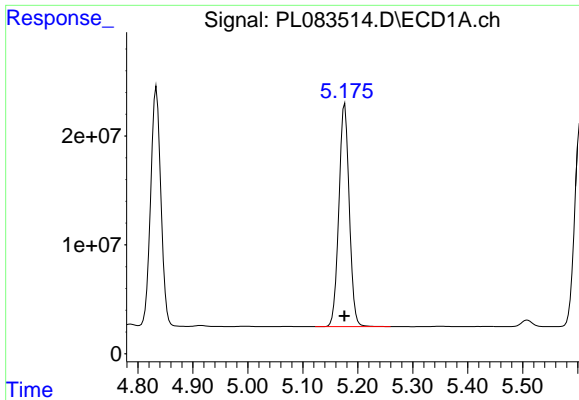
#4 Heptachlor

R.T.: 4.834 min
 Delta R.T.: 0.000 min
 Response: 281566868
 Conc: 98.76 ng/ml



#4 Heptachlor

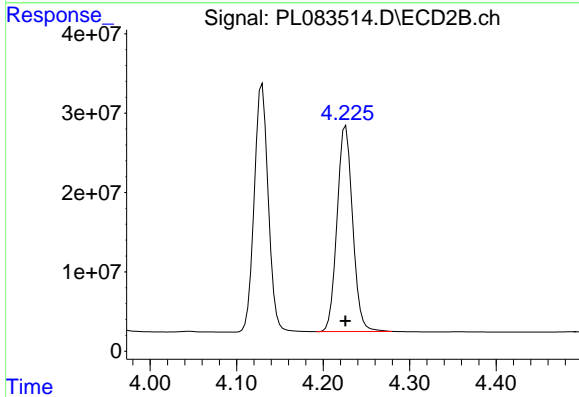
R.T.: 3.943 min
 Delta R.T.: 0.000 min
 Response: 323685025
 Conc: 100.23 ng/ml



#5 Aldrin

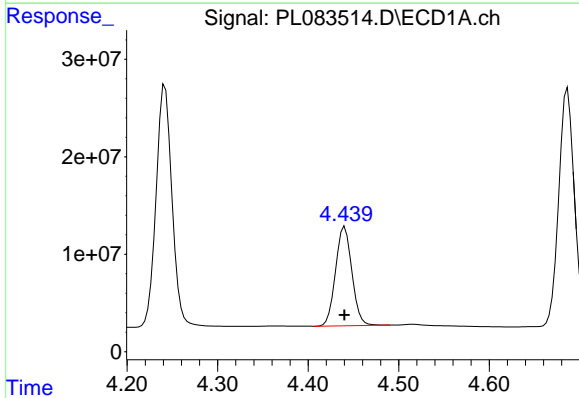
R.T.: 5.176 min
 Delta R.T.: 0.000 min
 Response: 269398663
 Conc: 100.03 ng/ml

Instrument :
 ECD_L
 ClientSampleId :
 PSTDICC100



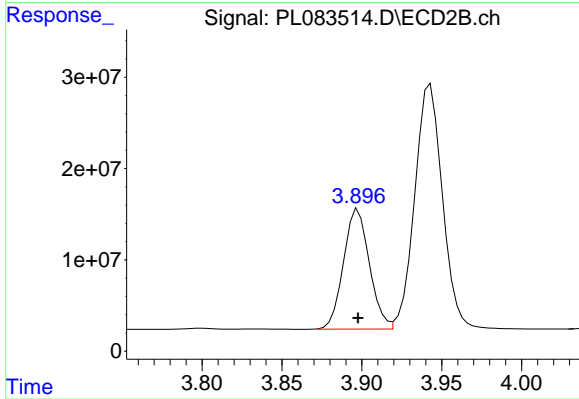
#5 Aldrin

R.T.: 4.226 min
 Delta R.T.: 0.000 min
 Response: 321896071
 Conc: 101.82 ng/ml



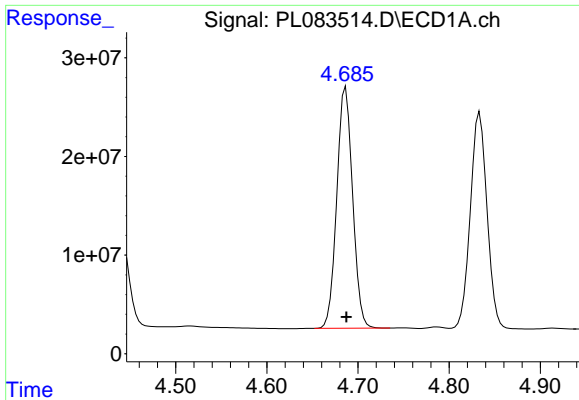
#6 beta-BHC

R.T.: 4.440 min
 Delta R.T.: 0.000 min
 Response: 127357974
 Conc: 95.11 ng/ml



#6 beta-BHC

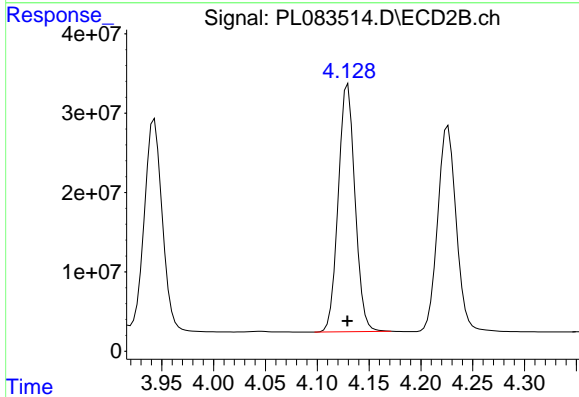
R.T.: 3.898 min
 Delta R.T.: 0.000 min
 Response: 148192763
 Conc: 96.50 ng/ml



#7 delta-BHC

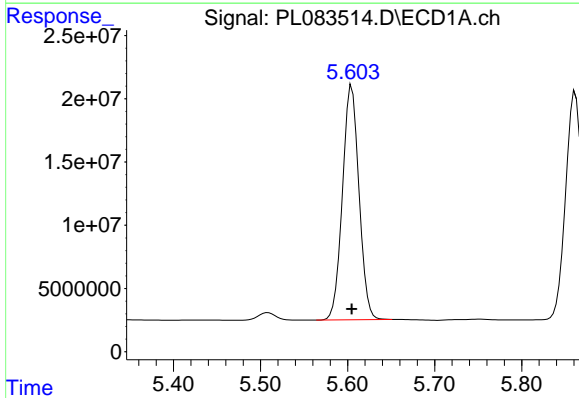
R.T.: 4.687 min
 Delta R.T.: 0.000 min
 Response: 294900542
 Conc: 101.81 ng/ml

Instrument :
 ECD_L
 ClientSampleId :
 PSTDICC100



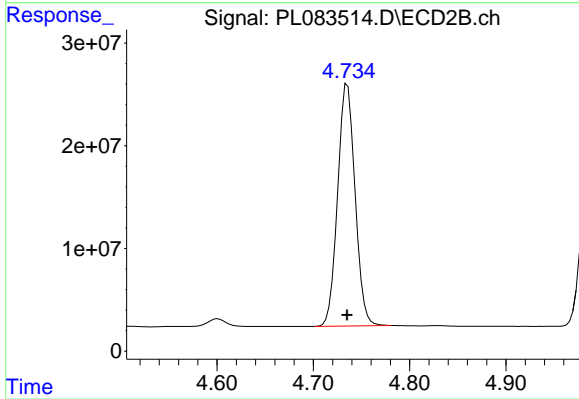
#7 delta-BHC

R.T.: 4.130 min
 Delta R.T.: 0.000 min
 Response: 350525942
 Conc: 103.07 ng/ml



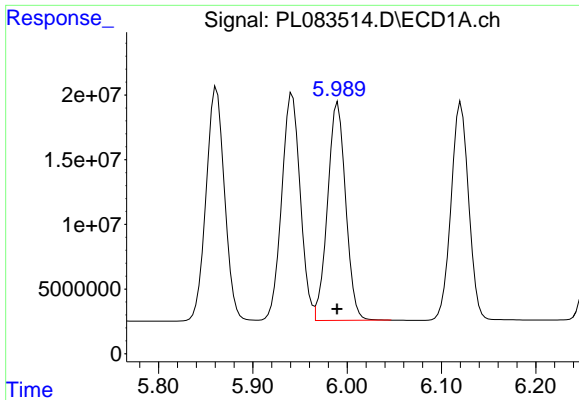
#8 Heptachlor epoxide

R.T.: 5.605 min
 Delta R.T.: 0.000 min
 Response: 244439168
 Conc: 95.13 ng/ml



#8 Heptachlor epoxide

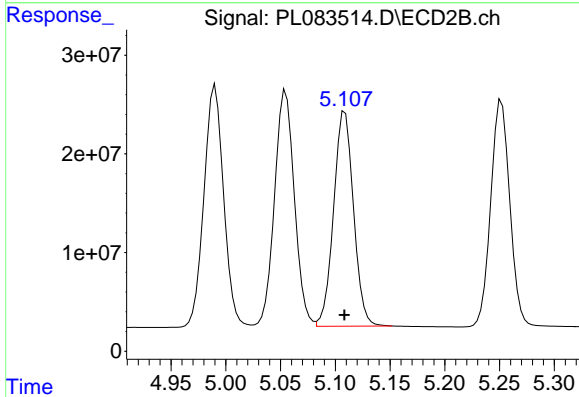
R.T.: 4.736 min
 Delta R.T.: 0.000 min
 Response: 296093463
 Conc: 99.44 ng/ml



#9 Endosulfan I

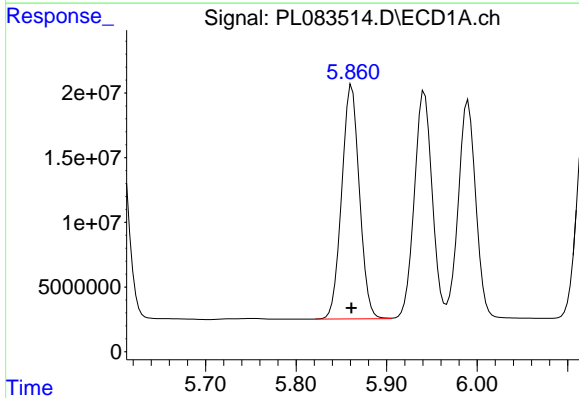
R.T.: 5.990 min
 Delta R.T.: 0.000 min
 Response: 225082371
 Conc: 98.82 ng/ml

Instrument :
 ECD_L
 ClientSampleId :
 PSTDICC100



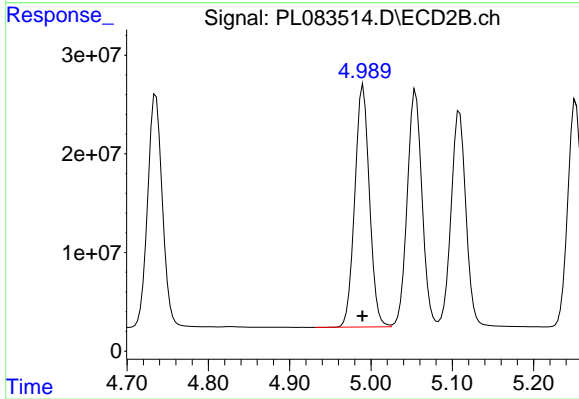
#9 Endosulfan I

R.T.: 5.109 min
 Delta R.T.: 0.000 min
 Response: 275399439
 Conc: 99.12 ng/ml



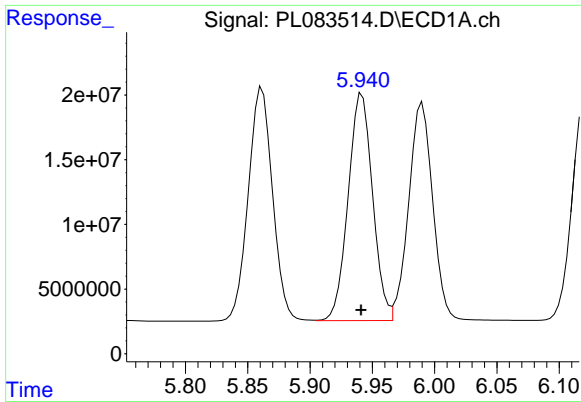
#10 gamma-Chlordane

R.T.: 5.861 min
 Delta R.T.: 0.000 min
 Response: 245772638
 Conc: 99.58 ng/ml



#10 gamma-Chlordane

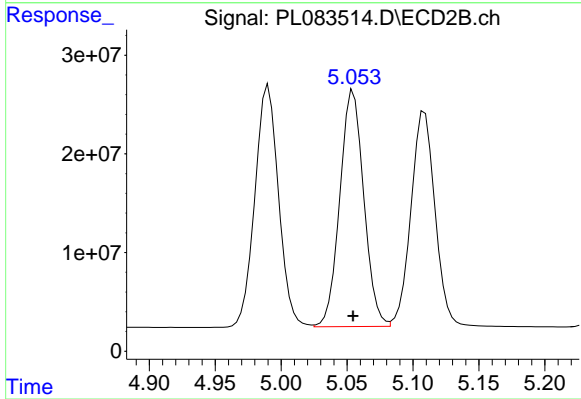
R.T.: 4.990 min
 Delta R.T.: 0.000 min
 Response: 306184520
 Conc: 100.12 ng/ml



#11 alpha-Chlordane

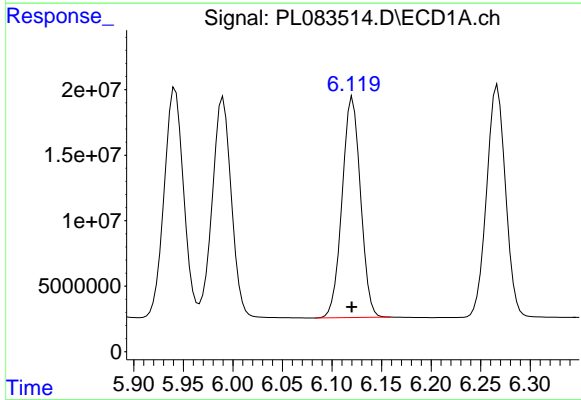
R.T.: 5.942 min
 Delta R.T.: 0.000 min
 Response: 240464509
 Conc: 98.99 ng/ml

Instrument :
 ECD_L
 ClientSampleId :
 PSTDICC100



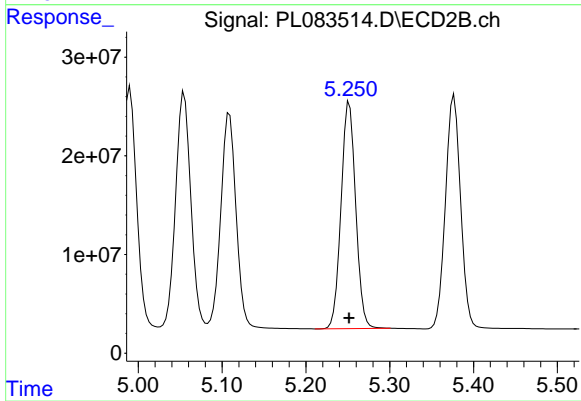
#11 alpha-Chlordane

R.T.: 5.055 min
 Delta R.T.: 0.000 min
 Response: 303052458
 Conc: 99.21 ng/ml



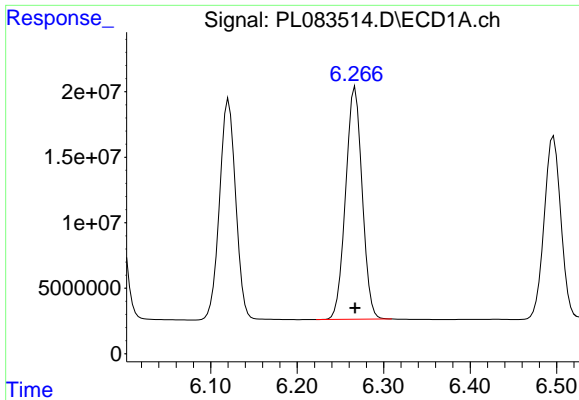
#12 4,4'-DDE

R.T.: 6.121 min
 Delta R.T.: 0.000 min
 Response: 217928602
 Conc: 103.41 ng/ml



#12 4,4'-DDE

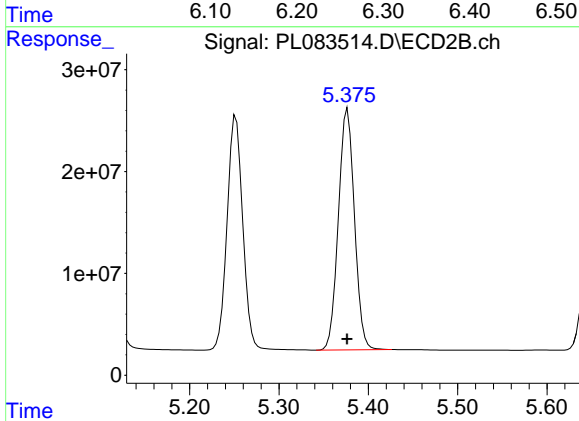
R.T.: 5.252 min
 Delta R.T.: 0.000 min
 Response: 278485428
 Conc: 103.82 ng/ml



#13 Dieldrin

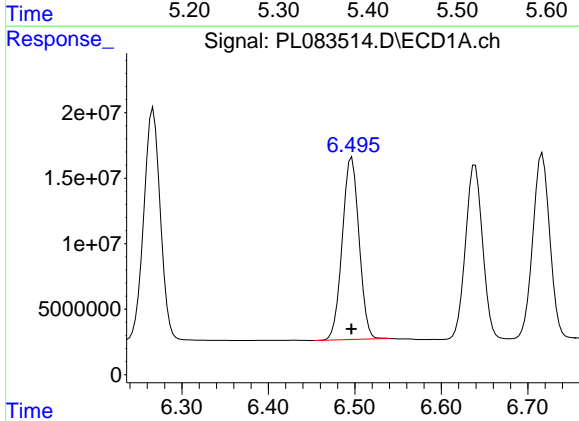
R.T.: 6.267 min
 Delta R.T.: 0.000 min
 Response: 234898853
 Conc: 101.96 ng/ml

Instrument :
 ECD_L
 ClientSampleId :
 PSTDICC100



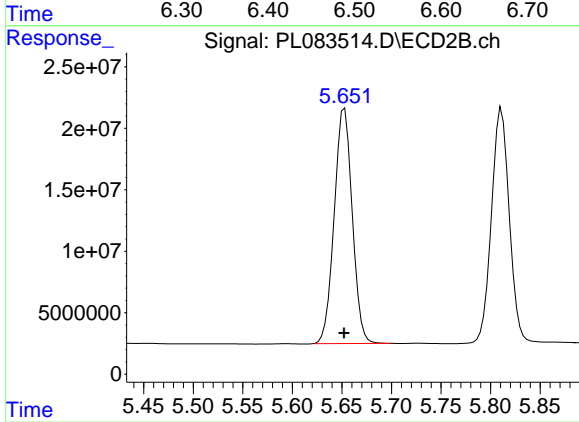
#13 Dieldrin

R.T.: 5.377 min
 Delta R.T.: 0.000 min
 Response: 295990151
 Conc: 101.77 ng/ml



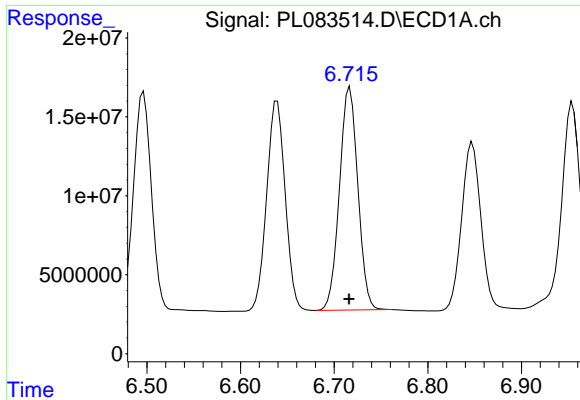
#14 Endrin

R.T.: 6.496 min
 Delta R.T.: 0.000 min
 Response: 186441764
 Conc: 100.86 ng/ml



#14 Endrin

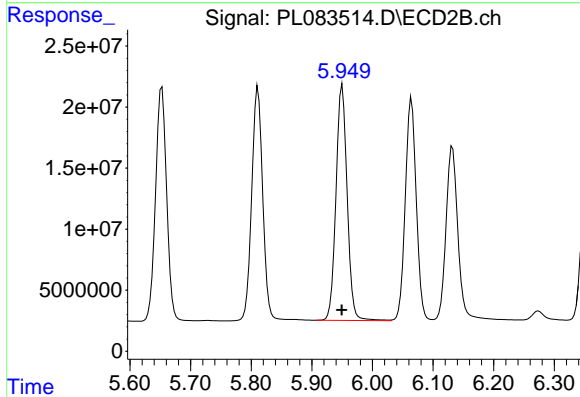
R.T.: 5.653 min
 Delta R.T.: 0.000 min
 Response: 242200576
 Conc: 99.56 ng/ml



#15 Endosulfan II

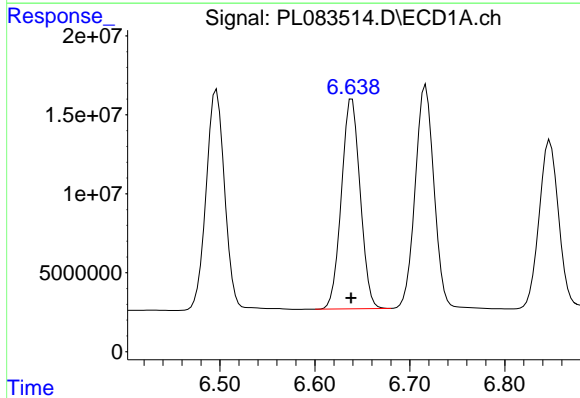
R.T.: 6.717 min
 Delta R.T.: 0.000 min
 Response: 193114352
 Conc: 100.62 ng/ml

Instrument :
 ECD_L
 ClientSampleId :
 PSTDICC100



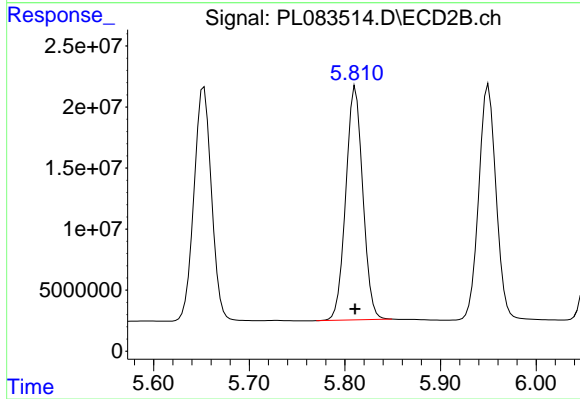
#15 Endosulfan II

R.T.: 5.950 min
 Delta R.T.: 0.000 min
 Response: 246675774
 Conc: 101.86 ng/ml



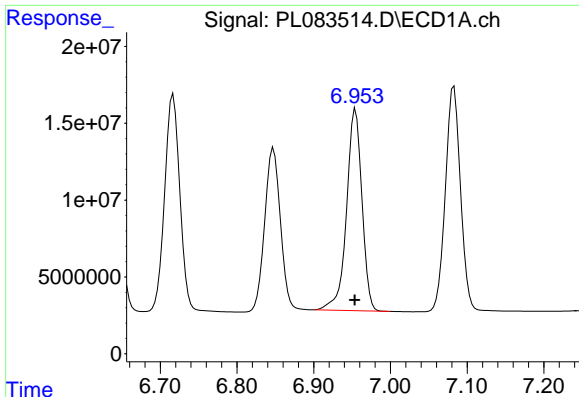
#16 4,4'-DDD

R.T.: 6.639 min
 Delta R.T.: 0.000 min
 Response: 182745962
 Conc: 103.10 ng/ml



#16 4,4'-DDD

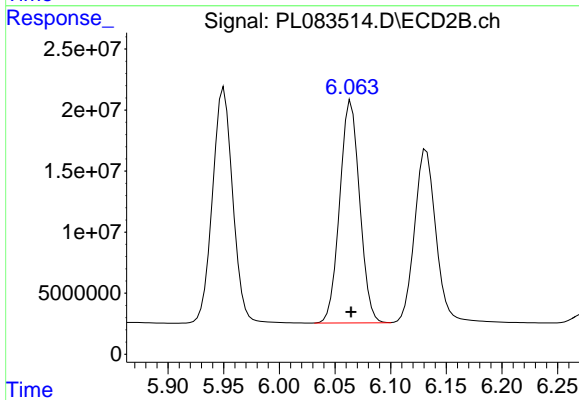
R.T.: 5.811 min
 Delta R.T.: 0.000 min
 Response: 237874677
 Conc: 102.89 ng/ml



#17 4,4'-DDT

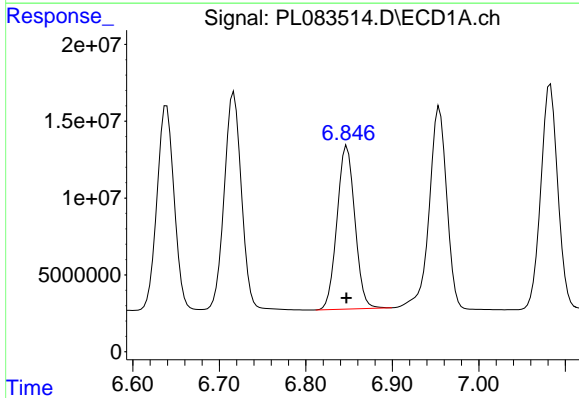
R.T.: 6.954 min
 Delta R.T.: 0.001 min
 Response: 184219253
 Conc: 104.50 ng/ml

Instrument :
 ECD_L
 ClientSampleId :
 PSTDICC100



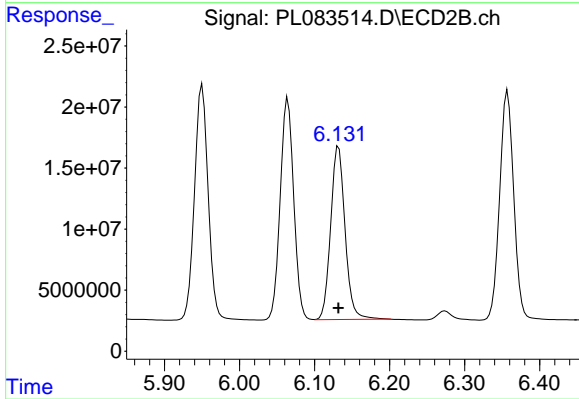
#17 4,4'-DDT

R.T.: 6.064 min
 Delta R.T.: 0.000 min
 Response: 227000028
 Conc: 103.09 ng/ml



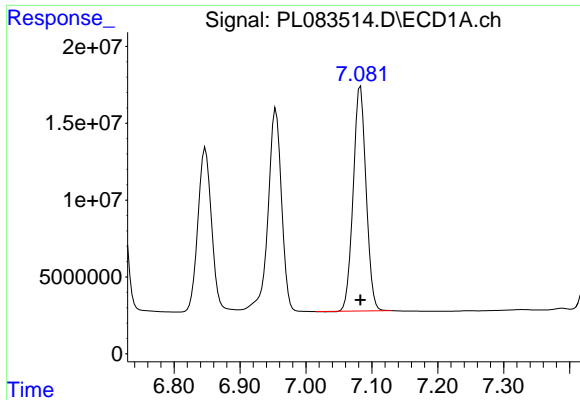
#18 Endrin aldehyde

R.T.: 6.848 min
 Delta R.T.: 0.000 min
 Response: 151619701
 Conc: 99.64 ng/ml



#18 Endrin aldehyde

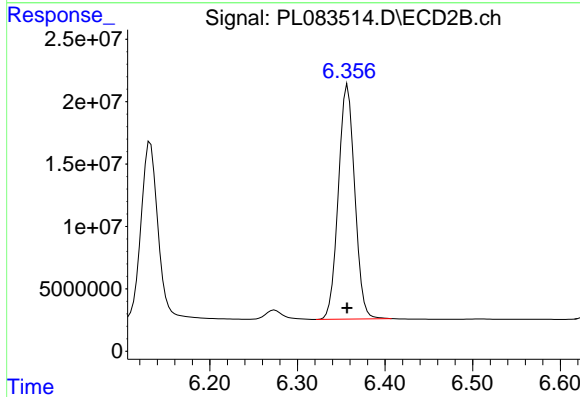
R.T.: 6.132 min
 Delta R.T.: 0.000 min
 Response: 189273218
 Conc: 97.74 ng/ml



#19 Endosulfan Sulfate

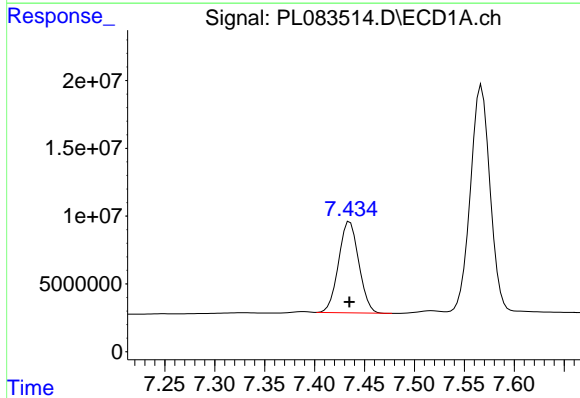
R.T.: 7.083 min
 Delta R.T.: 0.000 min
 Response: 199066672
 Conc: 101.38 ng/ml

Instrument :
 ECD_L
 ClientSampleId :
 PSTDICC100



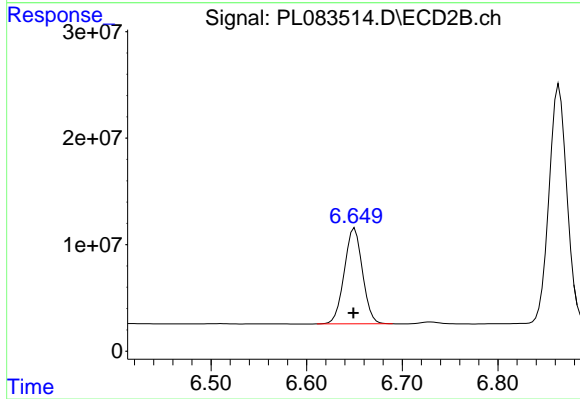
#19 Endosulfan Sulfate

R.T.: 6.357 min
 Delta R.T.: 0.000 min
 Response: 244095376
 Conc: 98.31 ng/ml



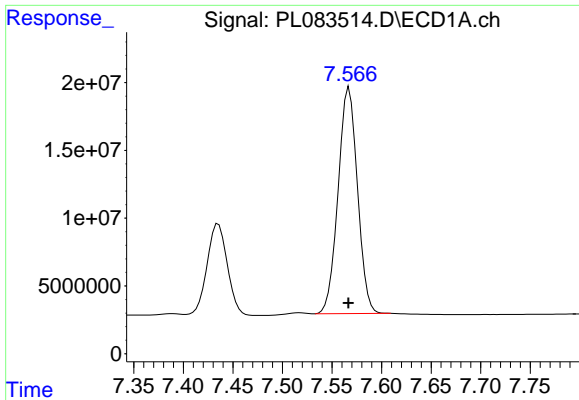
#20 Methoxychlor

R.T.: 7.435 min
 Delta R.T.: 0.000 min
 Response: 94855892
 Conc: 101.23 ng/ml



#20 Methoxychlor

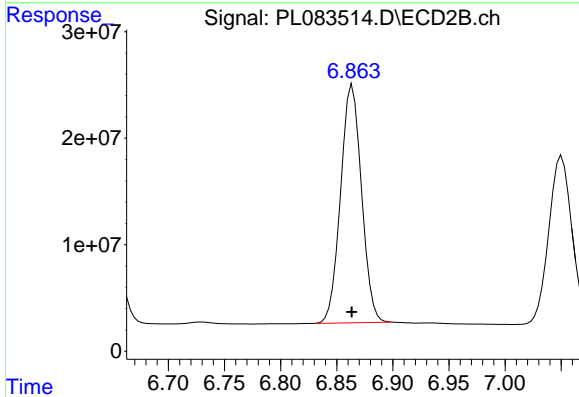
R.T.: 6.650 min
 Delta R.T.: 0.001 min
 Response: 119333086
 Conc: 95.27 ng/ml



#21 Endrin ketone

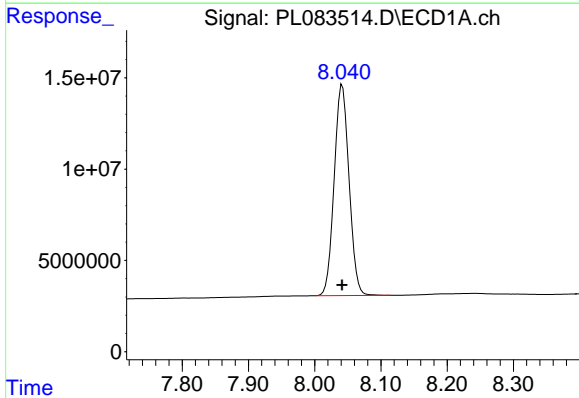
R.T.: 7.567 min
 Delta R.T.: 0.000 min
 Response: 226890329
 Conc: 103.13 ng/ml

Instrument :
 ECD_L
 ClientSampleId :
 PSTDICC100



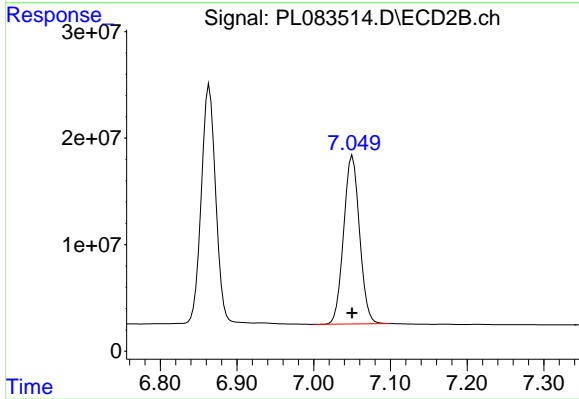
#21 Endrin ketone

R.T.: 6.864 min
 Delta R.T.: 0.000 min
 Response: 289866424
 Conc: 99.94 ng/ml



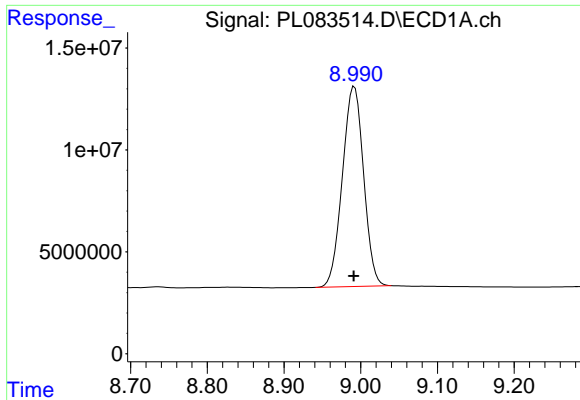
#22 Mirex

R.T.: 8.042 min
 Delta R.T.: 0.000 min
 Response: 180211285
 Conc: 99.12 ng/ml



#22 Mirex

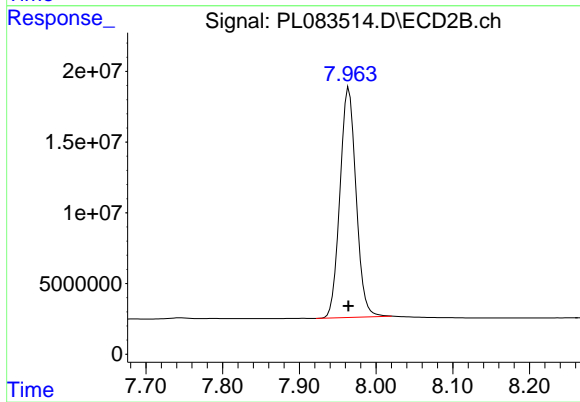
R.T.: 7.051 min
 Delta R.T.: 0.000 min
 Response: 228800542
 Conc: 94.50 ng/ml



#28 Decachlorobiphenyl

R.T.: 8.992 min
Delta R.T.: 0.000 min
Response: 189689520
Conc: 102.08 ng/ml

Instrument :
ECD_L
ClientSampleId :
PSTDICC100



#28 Decachlorobiphenyl

R.T.: 7.964 min
Delta R.T.: 0.000 min
Response: 237781863
Conc: 95.97 ng/ml