

Data Path : Z:\pestpcbsrv\HPCHEM1\ECD\_L\Data\PL061724\  
 Data File : PL090201.D  
 Signal(s) : Signal #1: ECD1A.ch Signal #2: ECD2B.ch  
 Acq On : 17 Jun 2024 17:51  
 Operator : AR\AJ  
 Sample : P2880-01  
 Misc :  
 ALS Vial : 7 Sample Multiplier: 1

Instrument :  
 ECD\_L  
 ClientSampleId :  
 OR-03-06132024

Integration File signal 1: autoint1.e  
 Integration File signal 2: autoint2.e  
 Quant Time: Jun 18 01:34:14 2024  
 Quant Method : Z:\pestpcbsrv\HPCHEM1\ECD\_L\methods\PL052424.M  
 Quant Title : GC Extractables  
 QLast Update : Fri May 24 14:57:01 2024  
 Response via : Initial Calibration  
 Integrator: ChemStation

Volume Inj. : 1 µl  
 Signal #1 Phase : ZB-MR2 Signal #2 Phase: ZB-MR1  
 Signal #1 Info : 30M x 0.32mm x0.2 Signal #2 Info : 30M x 0.32mm x0.5µm

Compound	RT#1	RT#2	Resp#1	Resp#2	ng/ml	ng/ml
System Monitoring Compounds						
1) SA Tetrachlo...	3.549	2.793	24844349	15447099	11.866	10.773
28) SA Decachlor...	9.061	7.938	16532835	14825075	11.244	9.976
Target Compounds						
2) A alpha-BHC	3.995	3.289	8136	278763	0.003	0.130 #
3) MA gamma-BHC...	4.341	0.000	2089206	0	0.719	N.D. #
4) MA Heptachlor	4.901f	3.997f	3405593	511367	1.305	0.256 #
5) MB Aldrin	5.244f	4.250	1318055	1234346	0.496	0.618
6) B beta-BHC	4.556f	3.935	10141296	1796443	7.764	1.964 #
7) B delta-BHC	4.785	4.136f	-459553	626445	N.D.	0.311
8) B Heptachlo...	5.712f	4.751	6609211	225909	2.654	0.123 #
10) B gamma-Chl...	5.949	5.025f	10027906	4783026	4.147	2.566 #
11) B alpha-Chl...	6.031	5.066	30898716	4529019	12.863	2.414 #
12) B 4,4'-DDE	6.175f	5.254	6718439	1110636	3.088	0.665 #
13) MA Dieldrin	6.363	5.391	228777	2500169	0.097	1.357 #
14) MA Endrin	6.581	5.671	231533	397647	0.115	0.243 #
15) B Endosulfa...	6.818f	5.960	2404483	748474	1.153	0.465 #
16) A 4,4'-DDD	6.710	5.810	526240	213672	0.300	0.152 #
17) MA 4,4'-DDT	7.029	6.056	1616159	426828	0.878	0.281 #
18) B Endrin al...	6.937	6.156f	385891	258229	0.249	0.213
19) B Endosulfa...	7.151f	6.354	371524	392964	0.194	0.250 #
21) B Endrin ke...	7.661	6.860	318353	161701	0.151	0.089 #
22) Mirex	8.140	7.071f	52963	58740	0.032	0.038
23) Chlordane-1	4.716	3.797	1684949	2513373	15.538	38.324 #
24) Chlordane-2	5.244	4.371	1318055	1134412	10.975	14.221 #
25) Chlordane-3	5.949	5.025f	10027906	4783026	25.060	21.488
26) Chlordane-4	6.031	5.066	30898716	4529019	63.203	21.420 #
27) Chlordane-5	6.859f	5.729	283884	397880	2.922	5.861 #

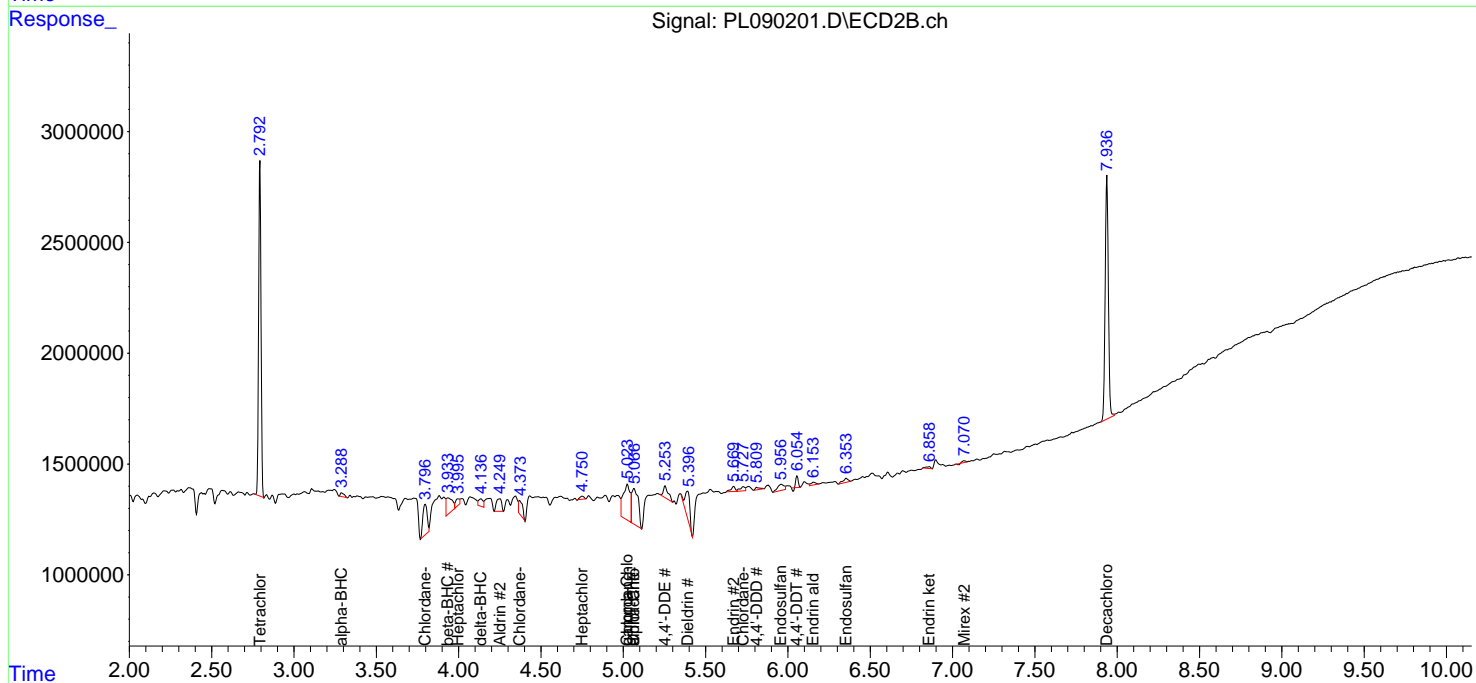
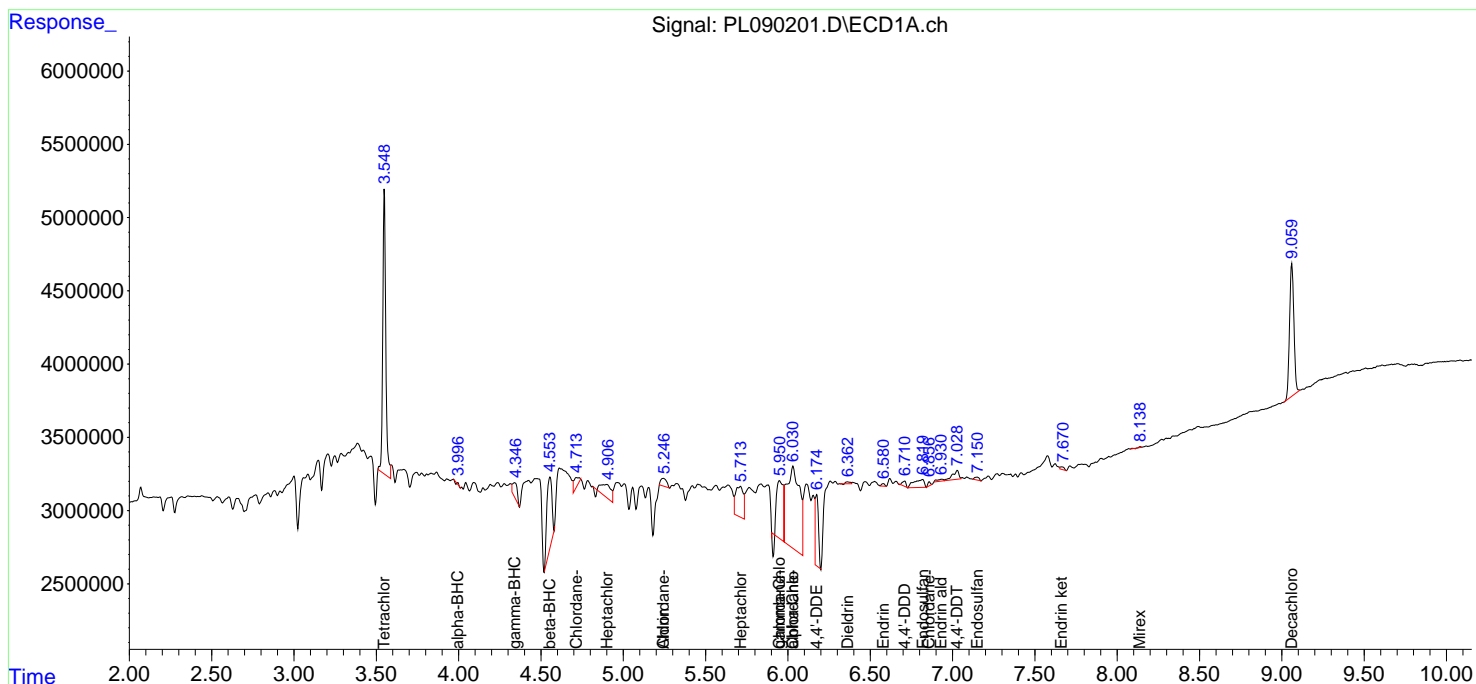
(f)=RT Delta > 1/2 Window (#)=Amounts differ by > 25% (m)=manual int.

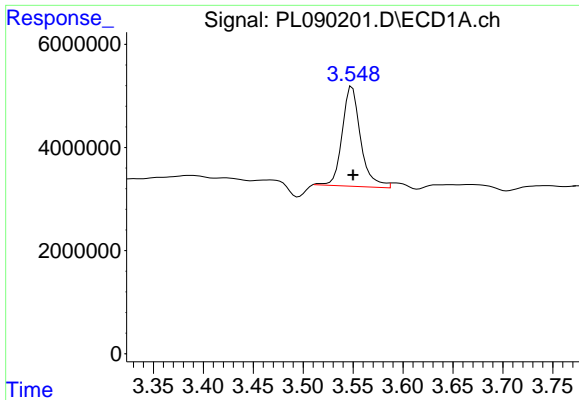
Data Path : Z:\pestpcbsrv\HPCHEM1\ECD\_L\Data\PL061724\  
 Data File : PL090201.D  
 Signal(s) : Signal #1: ECD1A.ch Signal #2: ECD2B.ch  
 Acq On : 17 Jun 2024 17:51  
 Operator : AR\AJ  
 Sample : P2880-01  
 Misc :  
 ALS Vial : 7 Sample Multiplier: 1

Instrument :  
 ECD\_L  
 ClientSampleId :  
 OR-03-06132024

Integration File signal 1: autoint1.e  
 Integration File signal 2: autoint2.e  
 Quant Time: Jun 18 01:34:14 2024  
 Quant Method : Z:\pestpcbsrv\HPCHEM1\ECD\_L\methods\PL052424.M  
 Quant Title : GC Extractables  
 QLast Update : Fri May 24 14:57:01 2024  
 Response via : Initial Calibration  
 Integrator: ChemStation

Volume Inj. : 1 µl  
 Signal #1 Phase : ZB-MR2 Signal #2 Phase: ZB-MR1  
 Signal #1 Info : 30M x 0.32mm x0.2 Signal #2 Info : 30M x 0.32mm x0.5µm

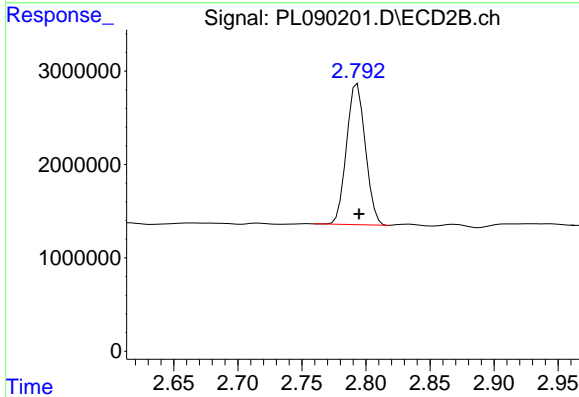




#1 Tetrachloro-m-xylene

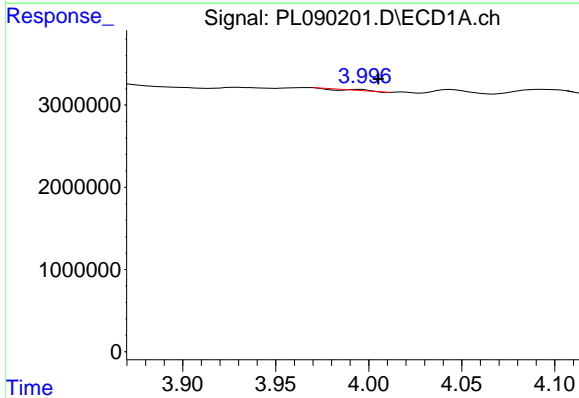
R.T.: 3.549 min  
 Delta R.T.: 0.000 min  
 Response: 24844349  
 Conc: 11.87 ng/ml

Instrument :  
 ECD\_L  
 ClientSampleId :  
 OR-03-06132024



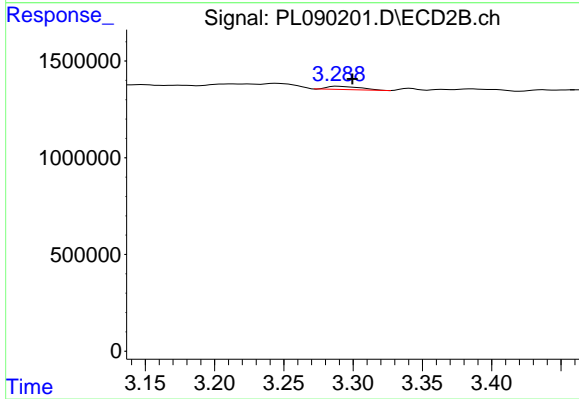
#1 Tetrachloro-m-xylene

R.T.: 2.793 min  
 Delta R.T.: -0.001 min  
 Response: 15447099  
 Conc: 10.77 ng/ml



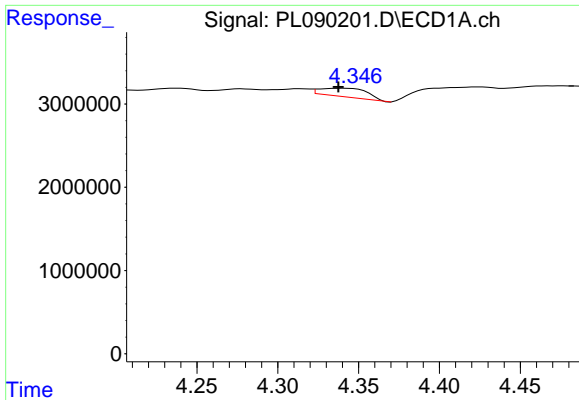
#2 alpha-BHC

R.T.: 3.995 min  
 Delta R.T.: -0.010 min  
 Response: 8136  
 Conc: 0.00 ng/ml



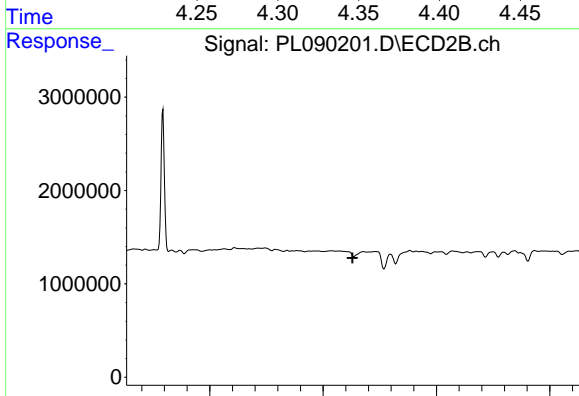
#2 alpha-BHC

R.T.: 3.289 min  
 Delta R.T.: -0.010 min  
 Response: 278763  
 Conc: 0.13 ng/ml

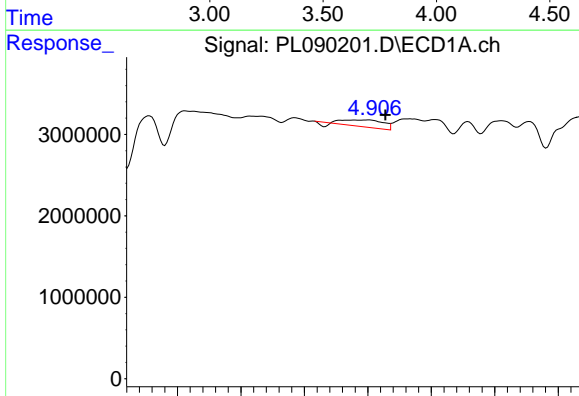


#3 gamma-BHC (Lindane)  
 R.T.: 4.341 min  
 Delta R.T.: 0.003 min  
 Response: 2089206  
 Conc: 0.72 ng/ml

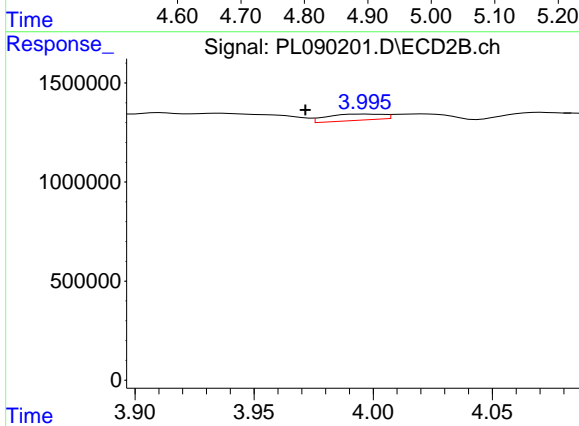
Instrument :  
 ECD\_L  
 ClientSampleId :  
 OR-03-06132024



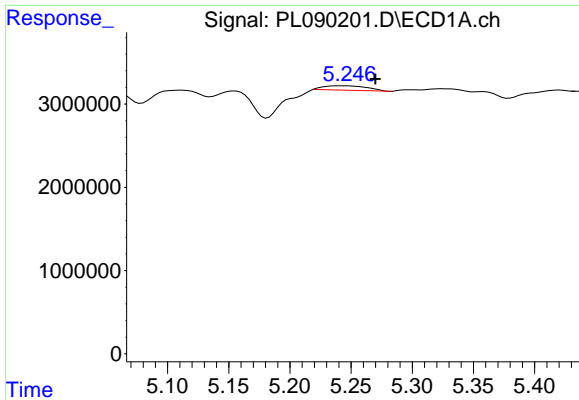
#3 gamma-BHC (Lindane)  
 R.T.: 0.000 min  
 Exp R.T. : 3.630 min  
 Response: 0  
 Conc: N.D.



#4 Heptachlor  
 R.T.: 4.901 min  
 Delta R.T.: -0.027 min  
 Response: 3405593  
 Conc: 1.30 ng/ml

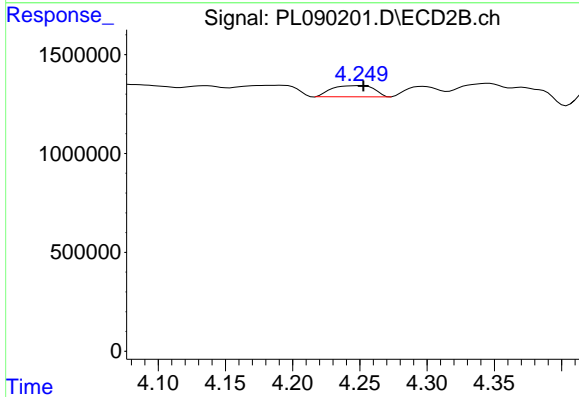


#4 Heptachlor  
 R.T.: 3.997 min  
 Delta R.T.: 0.025 min  
 Response: 511367  
 Conc: 0.26 ng/ml

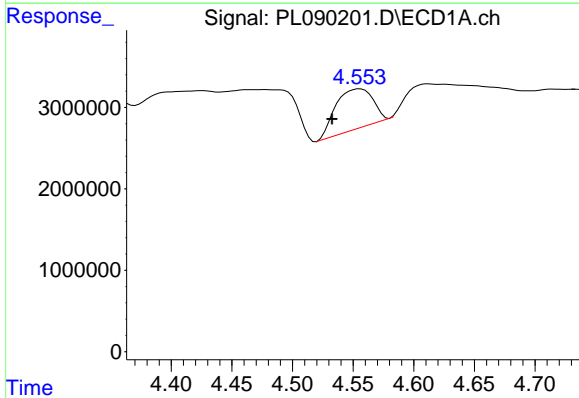


#5 Aldrin  
 R.T.: 5.244 min  
 Delta R.T.: -0.026 min  
 Response: 1318055  
 Conc: 0.50 ng/ml

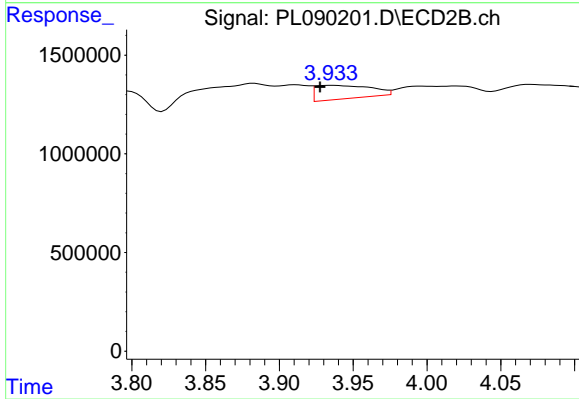
Instrument :  
 ECD\_L  
 ClientSampleId :  
 OR-03-06132024



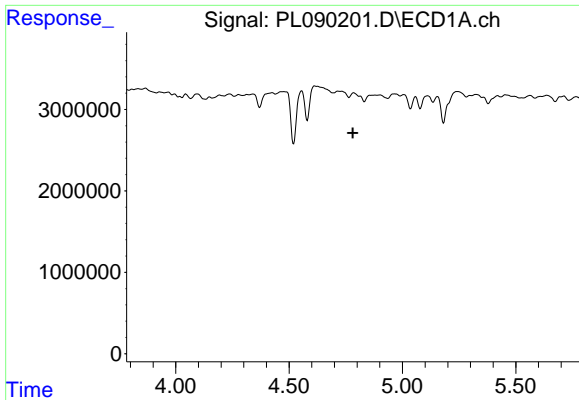
#5 Aldrin  
 R.T.: 4.250 min  
 Delta R.T.: -0.002 min  
 Response: 1234346  
 Conc: 0.62 ng/ml



#6 beta-BHC  
 R.T.: 4.556 min  
 Delta R.T.: 0.023 min  
 Response: 10141296  
 Conc: 7.76 ng/ml



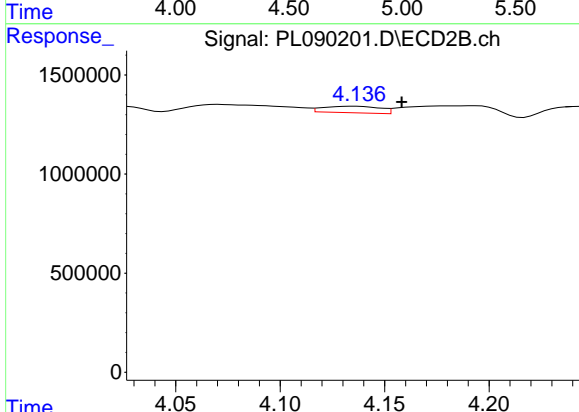
#6 beta-BHC  
 R.T.: 3.935 min  
 Delta R.T.: 0.008 min  
 Response: 1796443  
 Conc: 1.96 ng/ml



#7 delta-BHC

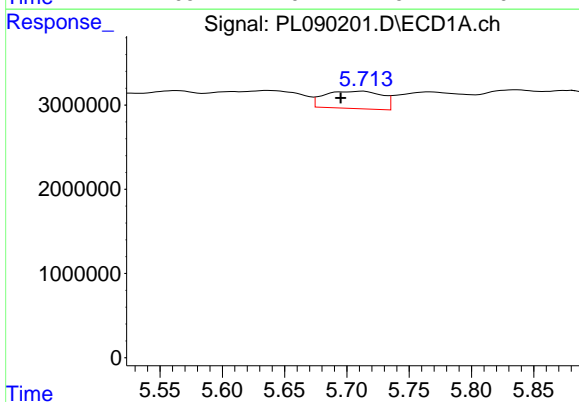
R.T.: 4.785 min  
 Delta R.T.: 0.005 min  
 Response: -459553  
 Conc: N.D.

Instrument :  
 ECD\_L  
 ClientSampleId :  
 OR-03-06132024



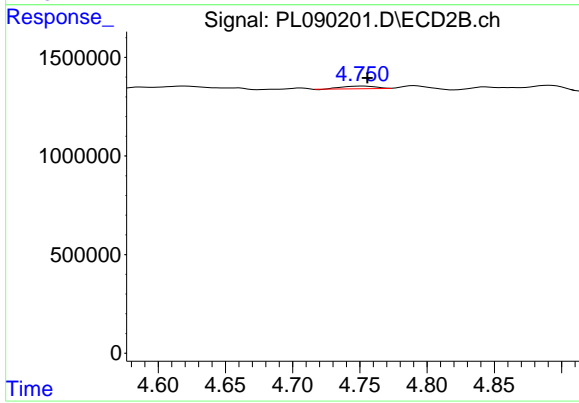
#7 delta-BHC

R.T.: 4.136 min  
 Delta R.T.: -0.022 min  
 Response: 626445  
 Conc: 0.31 ng/ml



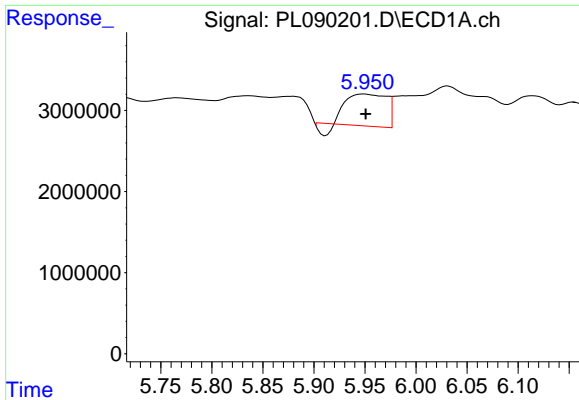
#8 Heptachlor epoxide

R.T.: 5.712 min  
 Delta R.T.: 0.017 min  
 Response: 6609211  
 Conc: 2.65 ng/ml



#8 Heptachlor epoxide

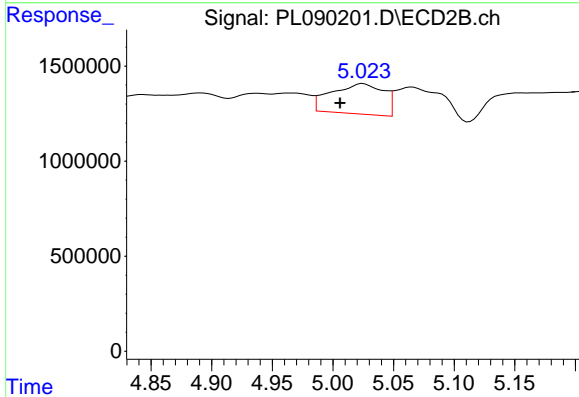
R.T.: 4.751 min  
 Delta R.T.: -0.004 min  
 Response: 225909  
 Conc: 0.12 ng/ml



#10 gamma-Chlordane

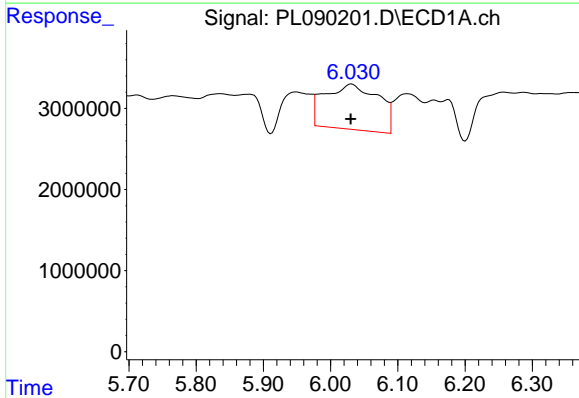
R.T.: 5.949 min  
 Delta R.T.: -0.002 min  
 Response: 10027906  
 Conc: 4.15 ng/ml

Instrument :  
 ECD\_L  
 ClientSampleId :  
 OR-03-06132024



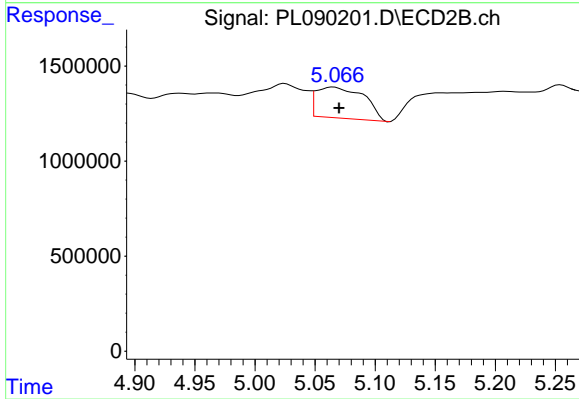
#10 gamma-Chlordane

R.T.: 5.025 min  
 Delta R.T.: 0.019 min  
 Response: 4783026  
 Conc: 2.57 ng/ml



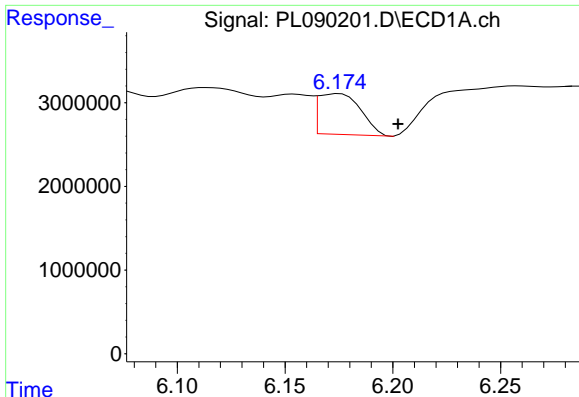
#11 alpha-Chlordane

R.T.: 6.031 min  
 Delta R.T.: 0.001 min  
 Response: 30898716  
 Conc: 12.86 ng/ml



#11 alpha-Chlordane

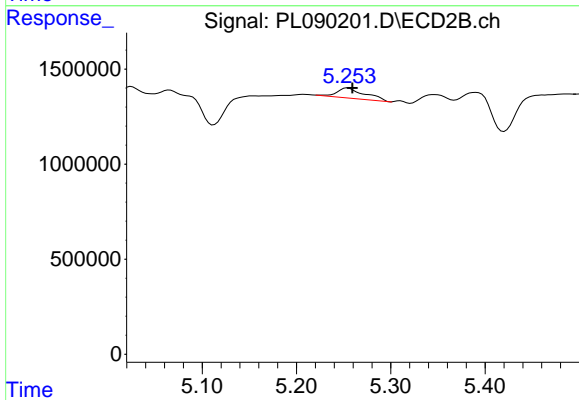
R.T.: 5.066 min  
 Delta R.T.: -0.004 min  
 Response: 4529019  
 Conc: 2.41 ng/ml



#12 4,4'-DDE

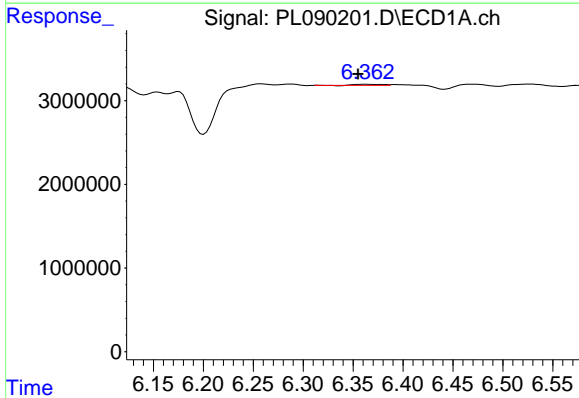
R.T.: 6.175 min  
 Delta R.T.: -0.028 min  
 Response: 6718439  
 Conc: 3.09 ng/ml

Instrument :  
 ECD\_L  
 ClientSampleId :  
 OR-03-06132024



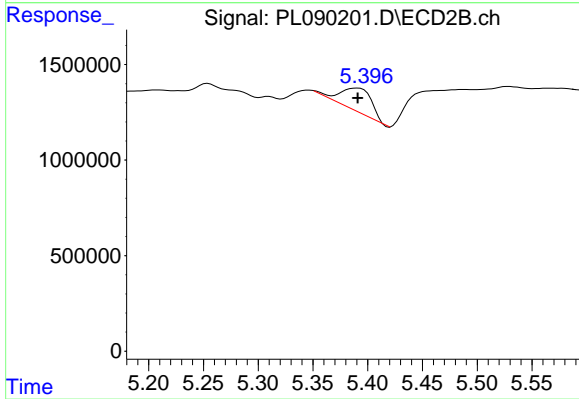
#12 4,4'-DDE

R.T.: 5.254 min  
 Delta R.T.: -0.005 min  
 Response: 1110636  
 Conc: 0.66 ng/ml



#13 Dieldrin

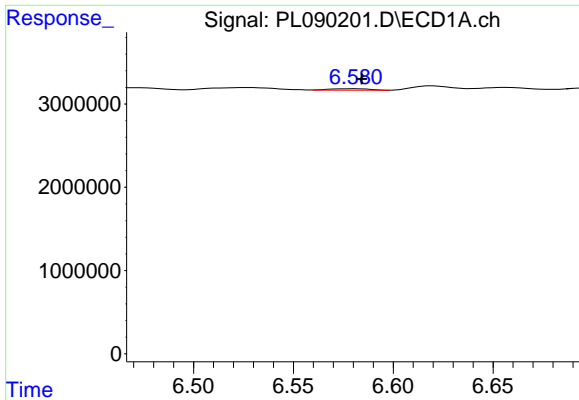
R.T.: 6.363 min  
 Delta R.T.: 0.008 min  
 Response: 228777  
 Conc: 0.10 ng/ml



#13 Dieldrin

R.T.: 5.391 min  
 Delta R.T.: 0.000 min  
 Response: 2500169  
 Conc: 1.36 ng/ml

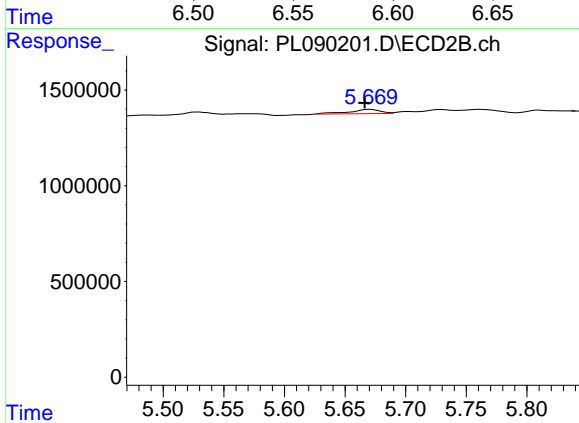




#14 Endrin

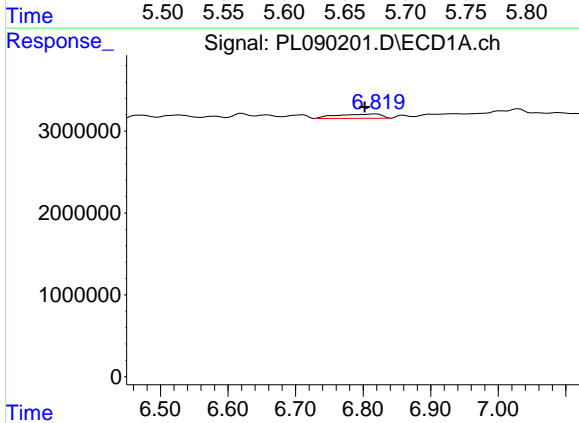
R.T.: 6.581 min  
 Delta R.T.: -0.004 min  
 Response: 231533  
 Conc: 0.12 ng/ml

Instrument :  
 ECD\_L  
 ClientSampleId :  
 OR-03-06132024



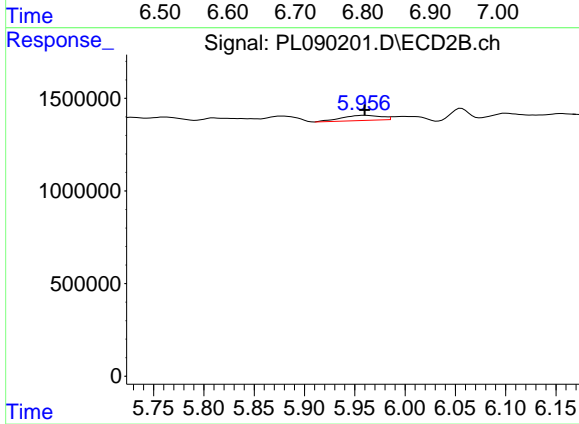
#14 Endrin

R.T.: 5.671 min  
 Delta R.T.: 0.005 min  
 Response: 397647  
 Conc: 0.24 ng/ml



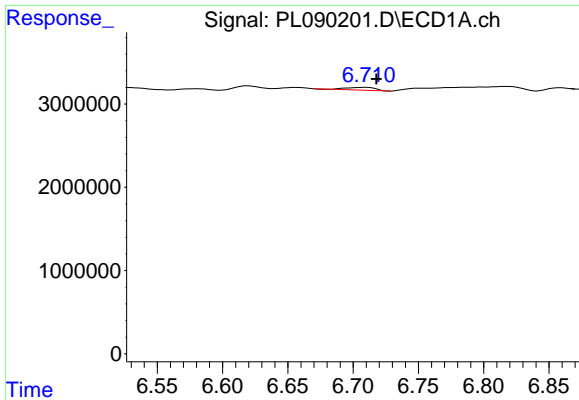
#15 Endosulfan II

R.T.: 6.818 min  
 Delta R.T.: 0.016 min  
 Response: 2404483  
 Conc: 1.15 ng/ml



#15 Endosulfan II

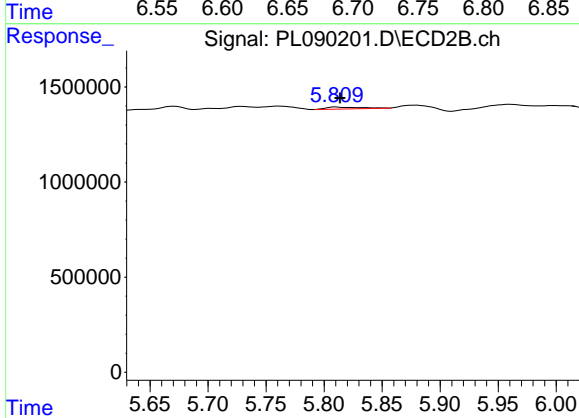
R.T.: 5.960 min  
 Delta R.T.: 0.000 min  
 Response: 748474  
 Conc: 0.46 ng/ml



#16 4,4'-DDD

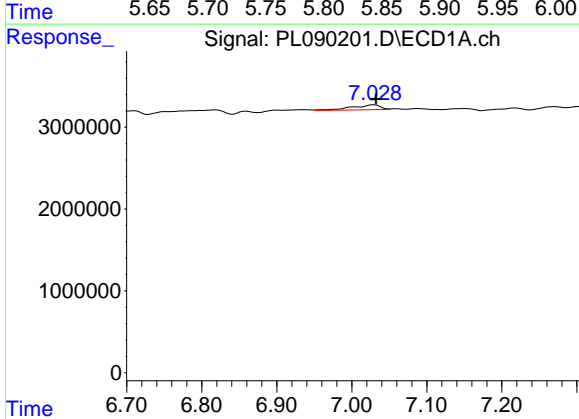
R.T.: 6.710 min  
 Delta R.T.: -0.008 min  
 Response: 526240  
 Conc: 0.30 ng/ml

Instrument :  
 ECD\_L  
 ClientSampleId :  
 OR-03-06132024



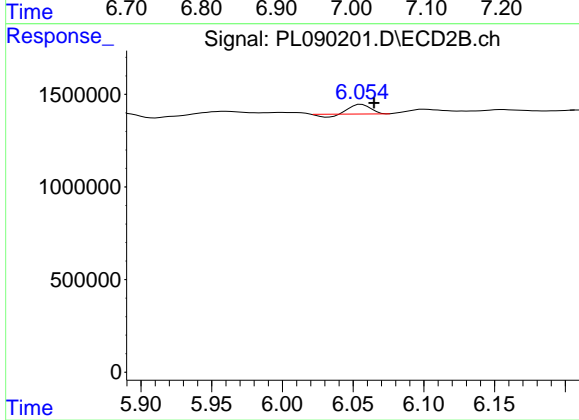
#16 4,4'-DDD

R.T.: 5.810 min  
 Delta R.T.: -0.004 min  
 Response: 213672  
 Conc: 0.15 ng/ml



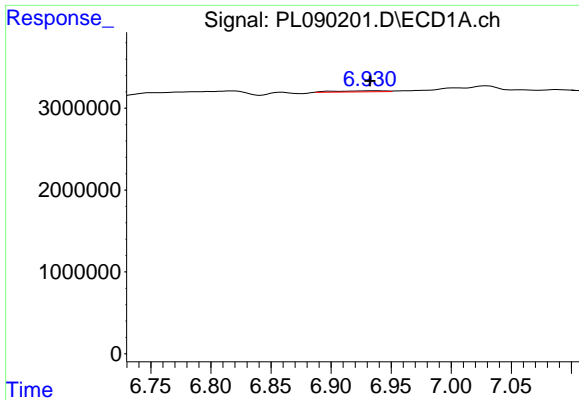
#17 4,4'-DDT

R.T.: 7.029 min  
 Delta R.T.: -0.003 min  
 Response: 1616159  
 Conc: 0.88 ng/ml



#17 4,4'-DDT

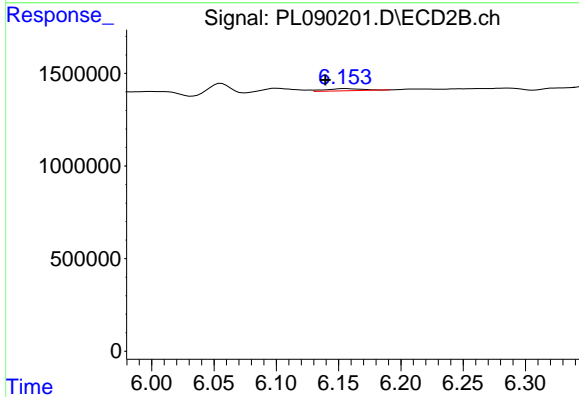
R.T.: 6.056 min  
 Delta R.T.: -0.009 min  
 Response: 426828  
 Conc: 0.28 ng/ml



#18 Endrin aldehyde

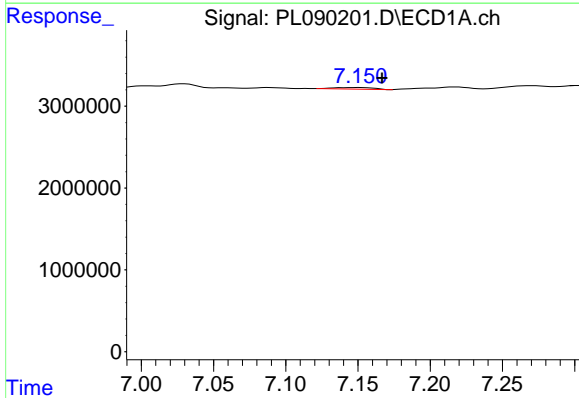
R.T.: 6.937 min  
 Delta R.T.: 0.004 min  
 Response: 385891  
 Conc: 0.25 ng/ml

Instrument :  
 ECD\_L  
 ClientSampleId :  
 OR-03-06132024



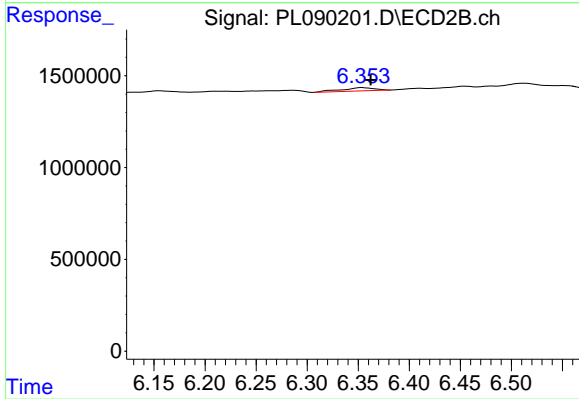
#18 Endrin aldehyde

R.T.: 6.156 min  
 Delta R.T.: 0.016 min  
 Response: 258229  
 Conc: 0.21 ng/ml



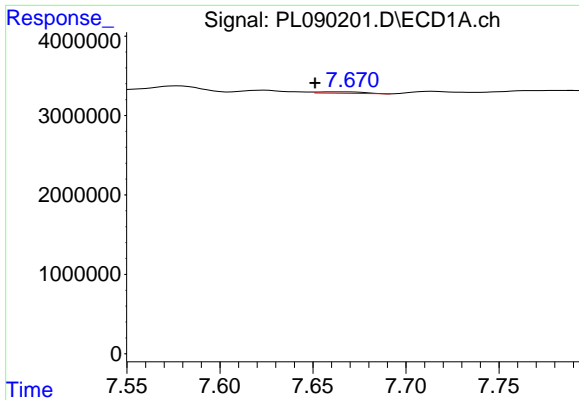
#19 Endosulfan Sulfate

R.T.: 7.151 min  
 Delta R.T.: -0.016 min  
 Response: 371524  
 Conc: 0.19 ng/ml



#19 Endosulfan Sulfate

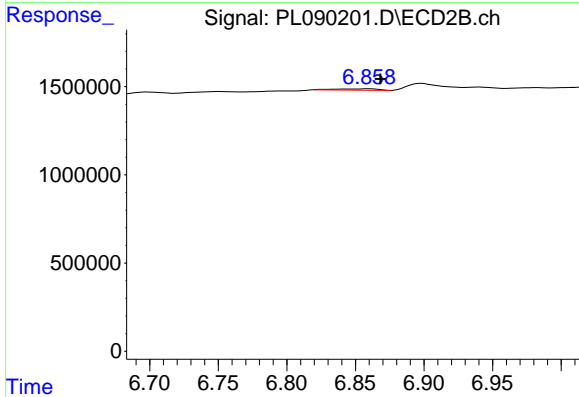
R.T.: 6.354 min  
 Delta R.T.: -0.008 min  
 Response: 392964  
 Conc: 0.25 ng/ml



#21 Endrin ketone

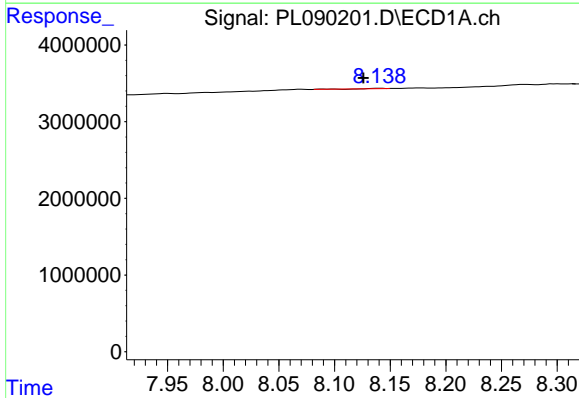
R.T.: 7.661 min  
 Delta R.T.: 0.010 min  
 Response: 318353  
 Conc: 0.15 ng/ml

Instrument :  
 ECD\_L  
 ClientSampleId :  
 OR-03-06132024



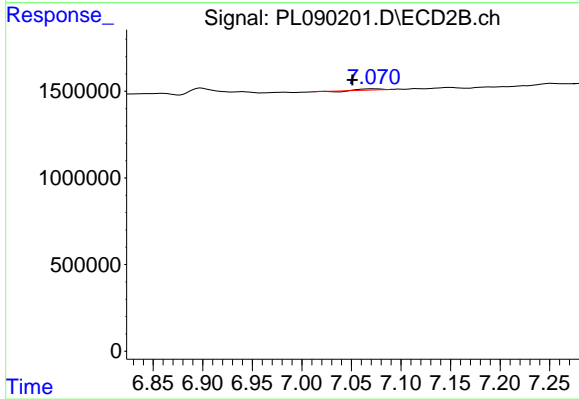
#21 Endrin ketone

R.T.: 6.860 min  
 Delta R.T.: -0.009 min  
 Response: 161701  
 Conc: 0.09 ng/ml



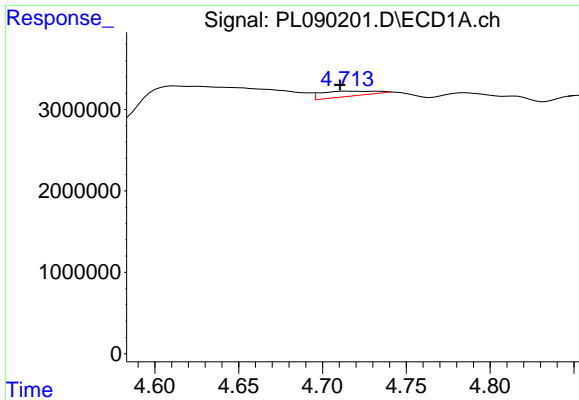
#22 Mirex

R.T.: 8.140 min  
 Delta R.T.: 0.014 min  
 Response: 52963  
 Conc: 0.03 ng/ml



#22 Mirex

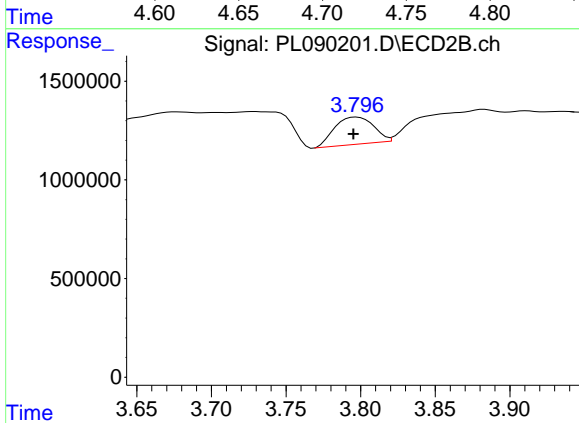
R.T.: 7.071 min  
 Delta R.T.: 0.020 min  
 Response: 58740  
 Conc: 0.04 ng/ml



#23 Chlordane-1

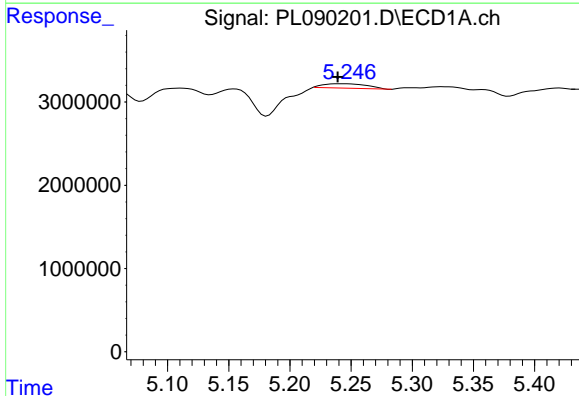
R.T.: 4.716 min  
 Delta R.T.: 0.005 min  
 Response: 1684949  
 Conc: 15.54 ng/ml

Instrument :  
 ECD\_L  
 ClientSampleId :  
 OR-03-06132024



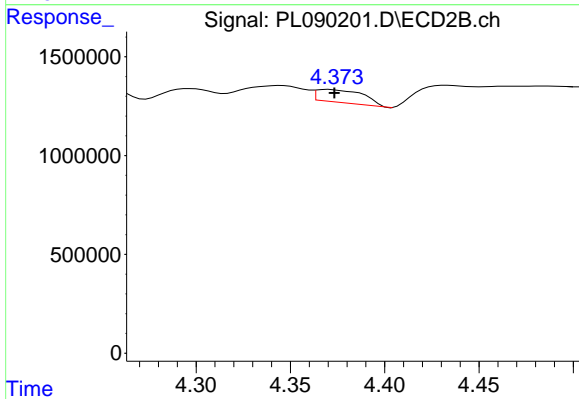
#23 Chlordane-1

R.T.: 3.797 min  
 Delta R.T.: 0.002 min  
 Response: 2513373  
 Conc: 38.32 ng/ml



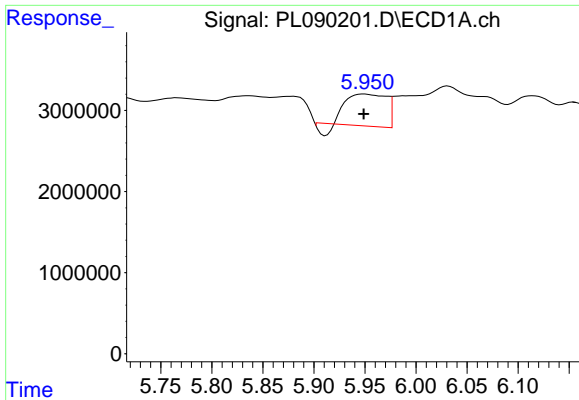
#24 Chlordane-2

R.T.: 5.244 min  
 Delta R.T.: 0.005 min  
 Response: 1318055  
 Conc: 10.98 ng/ml



#24 Chlordane-2

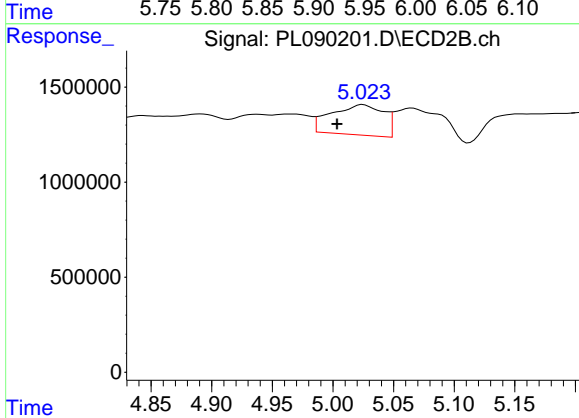
R.T.: 4.371 min  
 Delta R.T.: -0.003 min  
 Response: 1134412  
 Conc: 14.22 ng/ml



#25 Chlordane-3

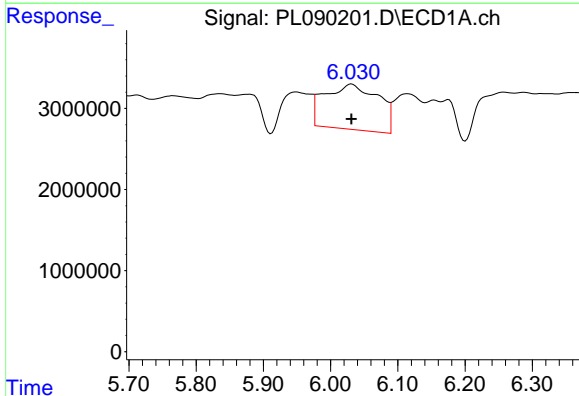
R.T.: 5.949 min  
 Delta R.T.: 0.000 min  
 Response: 10027906  
 Conc: 25.06 ng/ml

Instrument :  
 ECD\_L  
 ClientSampleId :  
 OR-03-06132024



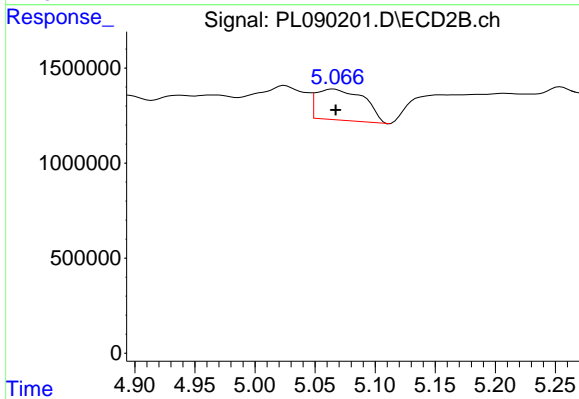
#25 Chlordane-3

R.T.: 5.025 min  
 Delta R.T.: 0.021 min  
 Response: 4783026  
 Conc: 21.49 ng/ml



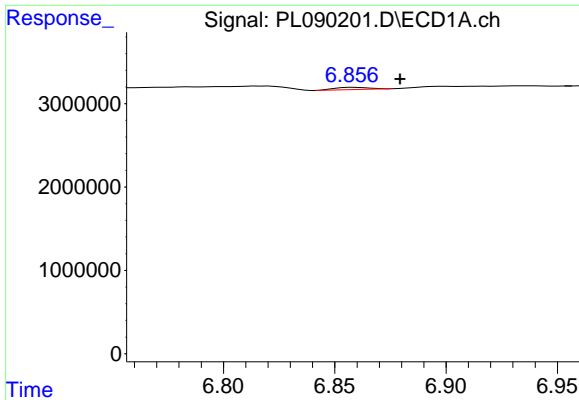
#26 Chlordane-4

R.T.: 6.031 min  
 Delta R.T.: 0.000 min  
 Response: 30898716  
 Conc: 63.20 ng/ml



#26 Chlordane-4

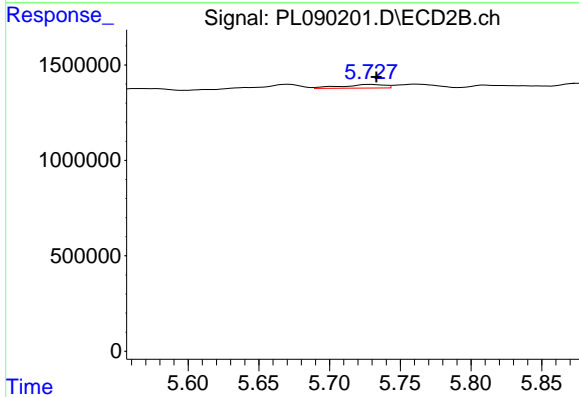
R.T.: 5.066 min  
 Delta R.T.: -0.001 min  
 Response: 4529019  
 Conc: 21.42 ng/ml



#27 Chlordane-5

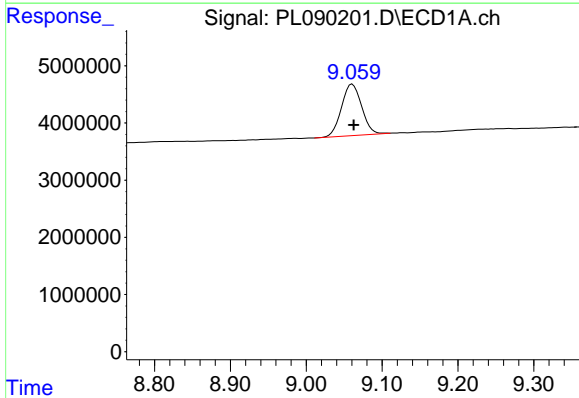
R.T.: 6.859 min  
 Delta R.T.: -0.020 min  
 Response: 283884  
 Conc: 2.92 ng/ml

Instrument :  
 ECD\_L  
 ClientSampleId :  
 OR-03-06132024



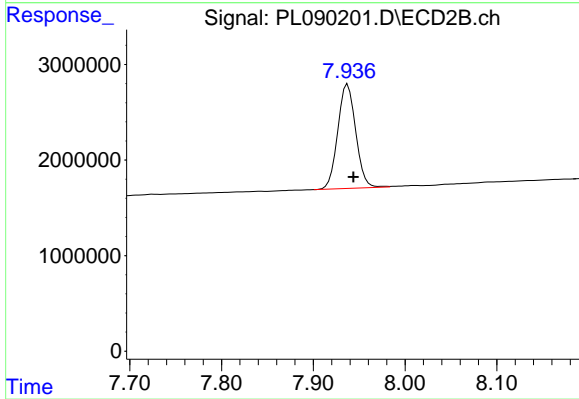
#27 Chlordane-5

R.T.: 5.729 min  
 Delta R.T.: -0.004 min  
 Response: 397880  
 Conc: 5.86 ng/ml



#28 Decachlorobiphenyl

R.T.: 9.061 min  
 Delta R.T.: -0.002 min  
 Response: 16532835  
 Conc: 11.24 ng/ml



#28 Decachlorobiphenyl

R.T.: 7.938 min  
 Delta R.T.: -0.006 min  
 Response: 14825075  
 Conc: 9.98 ng/ml