

Data Path : Z:\pestpcbsrv\HPCHEM1\ECD\_L\Data\PL061820\  
 Data File : PL059365.D  
 Signal(s) : Signal #1: ECD1A.ch Signal #2: ECD2B.ch  
 Acq On : 19 Jun 2020 00:08  
 Operator : AJ\MA  
 Sample : L3024-05  
 Misc :  
 ALS Vial : 43 Sample Multiplier: 1

Instrument :  
 ECD\_L  
 ClientSampleId :  
 RO-25

Integration File signal 1: autoint1.e  
 Integration File signal 2: autoint2.e  
 Quant Time: Jun 19 02:17:04 2020  
 Quant Method : Z:\pestpcbsrv\HPCHEM1\ECD\_L\methods\PL060320.M  
 Quant Title : GC Extractables  
 QLast Update : Thu Jun 04 08:16:22 2020  
 Response via : Initial Calibration  
 Integrator: ChemStation

Volume Inj. : 1 µl  
 Signal #1 Phase : ZB-MR2 Signal #2 Phase: ZB-MR1  
 Signal #1 Info : 30M x 0.32mm x0.2 Signal #2 Info : 30M x 0.32mm x0.5µm

Compound	RT#1	RT#2	Resp#1	Resp#2	ng/ml	ng/ml
-----						
System Monitoring Compounds						
1) SA Tetrachlo...	3.519	4.071	39522287	61454228	22.887	23.619
28) SA Decachlor...	8.290	9.181	26366592	38830674	16.034	16.381

Target Compounds

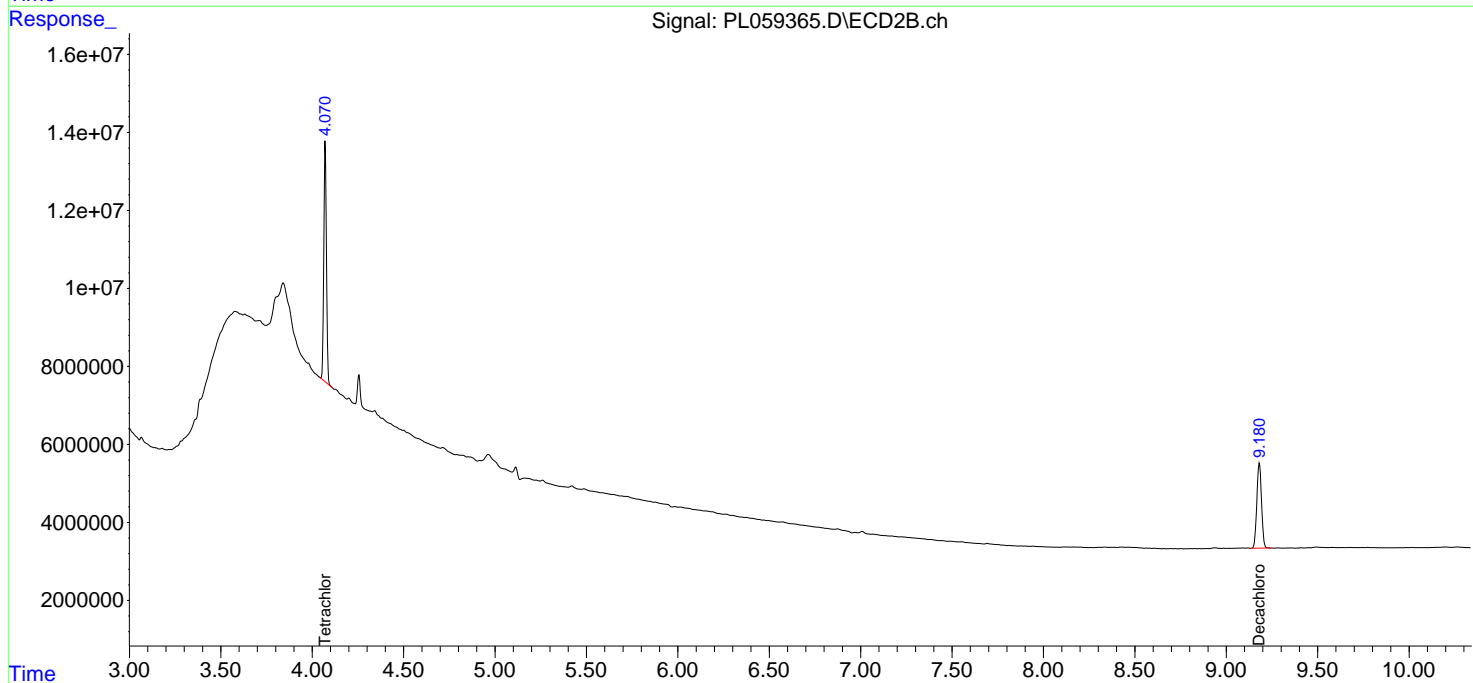
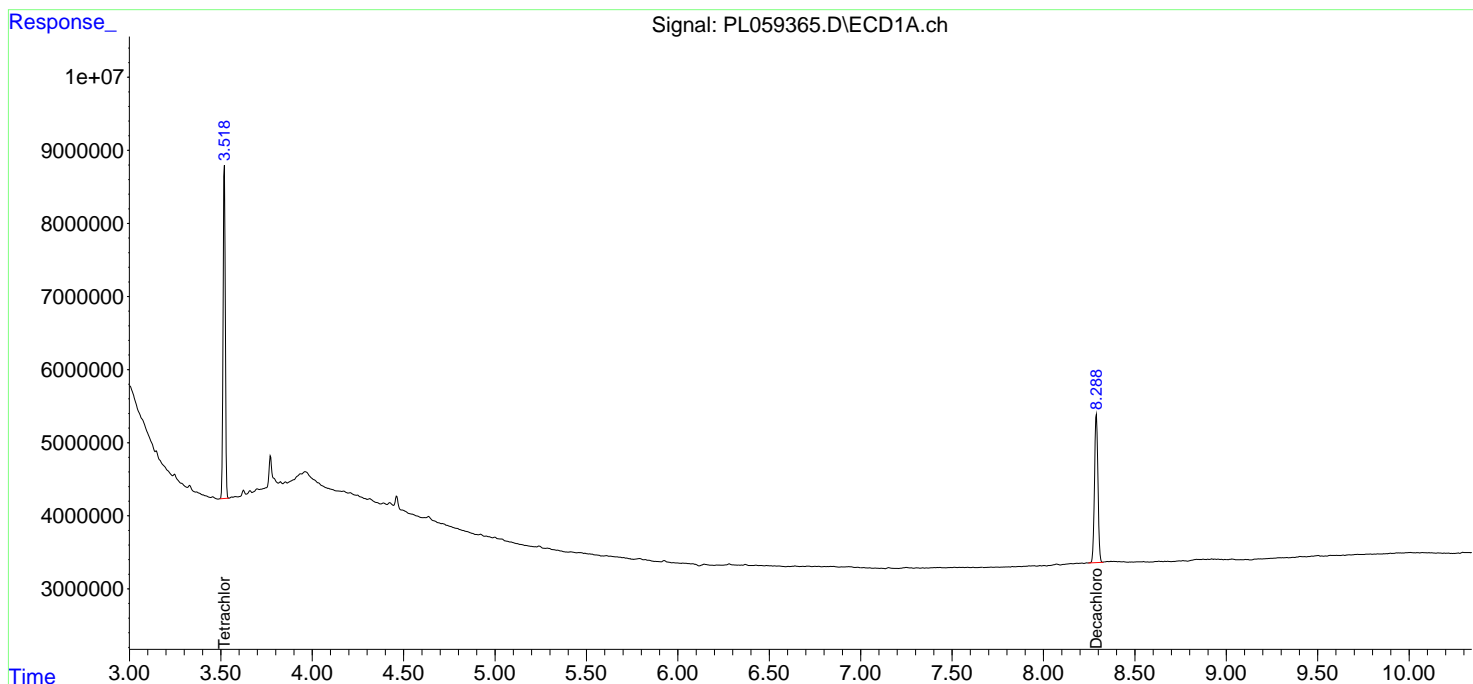
(f)=RT Delta > 1/2 Window (#)=Amounts differ by > 25% (m)=manual int.

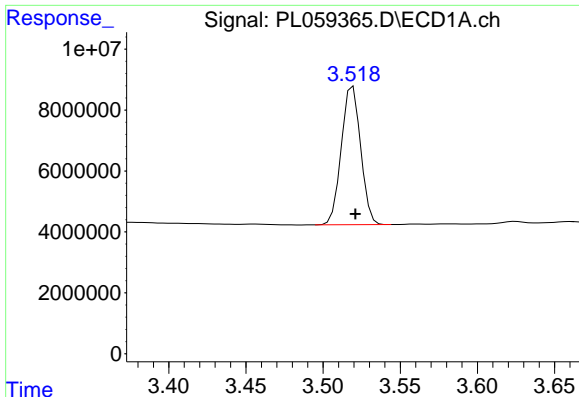
Data Path : Z:\pestpcbsrv\HPCHEM1\ECD\_L\Data\PL061820\  
 Data File : PL059365.D  
 Signal(s) : Signal #1: ECD1A.ch Signal #2: ECD2B.ch  
 Acq On : 19 Jun 2020 00:08  
 Operator : AJ\MA  
 Sample : L3024-05  
 Misc :  
 ALS Vial : 43 Sample Multiplier: 1

Instrument :  
 ECD\_L  
 ClientSampled :  
 RO-25

Integration File signal 1: autoint1.e  
 Integration File signal 2: autoint2.e  
 Quant Time: Jun 19 02:17:04 2020  
 Quant Method : Z:\pestpcbsrv\HPCHEM1\ECD\_L\methods\PL060320.M  
 Quant Title : GC Extractables  
 QLast Update : Thu Jun 04 08:16:22 2020  
 Response via : Initial Calibration  
 Integrator: ChemStation

Volume Inj. : 1 µl  
 Signal #1 Phase : ZB-MR2 Signal #2 Phase: ZB-MR1  
 Signal #1 Info : 30M x 0.32mm x0.2 Signal #2 Info : 30M x 0.32mm x0.5µm

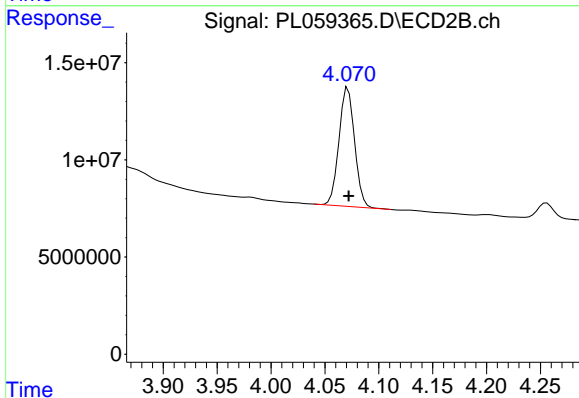




#1 Tetrachloro-m-xylene

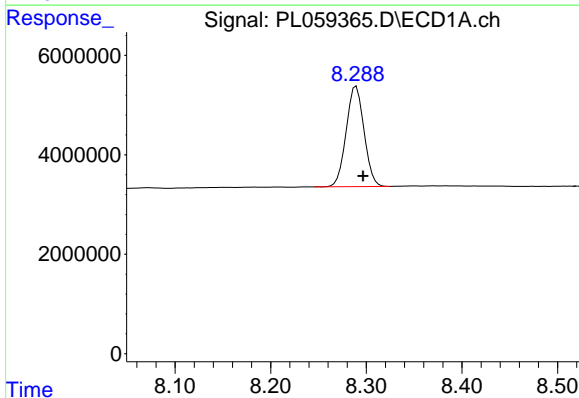
R.T.: 3.519 min  
 Delta R.T.: -0.002 min  
 Response: 39522287  
 Conc: 22.89 ng/ml

Instrument :  
 ECD\_L  
 ClientSampleId :  
 RO-25



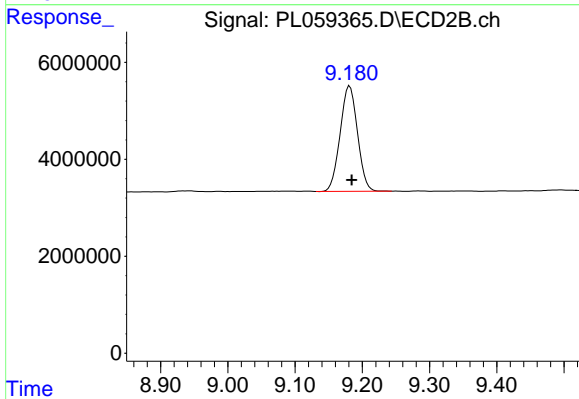
#1 Tetrachloro-m-xylene

R.T.: 4.071 min  
 Delta R.T.: 0.000 min  
 Response: 61454228  
 Conc: 23.62 ng/ml



#28 Decachlorobiphenyl

R.T.: 8.290 min  
 Delta R.T.: -0.007 min  
 Response: 26366592  
 Conc: 16.03 ng/ml



#28 Decachlorobiphenyl

R.T.: 9.181 min  
 Delta R.T.: -0.003 min  
 Response: 38830674  
 Conc: 16.38 ng/ml