

Data Path : Z:\pestpcbsrv\HPCHEM1\ECD\_L\Data\PL061824\  
 Data File : PL090216.D  
 Signal(s) : Signal #1: ECD1A.ch Signal #2: ECD2B.ch  
 Acq On : 18 Jun 2024 11:56  
 Operator : AR\AJ  
 Sample : PB161535BS  
 Misc :  
 ALS Vial : 6 Sample Multiplier: 1

Instrument :  
 ECD\_L  
 ClientSampleId :  
 PB161535BS

Integration File signal 1: autoint1.e  
 Integration File signal 2: autoint2.e  
 Quant Time: Jun 19 01:18:57 2024  
 Quant Method : Z:\pestpcbsrv\HPCHEM1\ECD\_L\methods\PL052424.M  
 Quant Title : GC Extractables  
 QLast Update : Fri May 24 14:57:01 2024  
 Response via : Initial Calibration  
 Integrator: ChemStation

Volume Inj. : 1 µl  
 Signal #1 Phase : ZB-MR2 Signal #2 Phase: ZB-MR1  
 Signal #1 Info : 30M x 0.32mm x0.2 Signal #2 Info : 30M x 0.32mm x0.5µm

Compound	RT#1	RT#2	Resp#1	Resp#2	ng/ml	ng/ml
-----						
System Monitoring Compounds						
1) SA Tetrachlo...	3.549	2.793	56147728	36667878	26.817	25.573
28) SA Decachlor...	9.060	7.936	39844470	37349090	27.098	25.134
Target Compounds						
2) A alpha-BHC	4.004	3.297	145.7E6	104.6E6	48.883	48.920
3) MA gamma-BHC...	4.336	3.627	143.5E6	103.2E6	49.374	49.340
4) MA Heptachlor	4.926	3.968	126.1E6	95615856	48.298	47.909
5) MB Aldrin	5.267	4.248	129.3E6	98456715	48.657	49.272
6) B beta-BHC	4.532	3.924	63978656	44299657	48.982	48.425
7) B delta-BHC	4.779	4.155	134.3E6	100.0E6	48.763	49.634
8) B Heptachlo...	5.692	4.750	120.2E6	90688264	48.243	49.415
9) A Endosulfan I	6.078	5.120	109.5E6	84227514	48.494	49.302
10) B gamma-Chl...	5.948	5.000	116.2E6	91490170	48.045	49.087
11) B alpha-Chl...	6.028	5.064	116.2E6	92054925	48.396	49.063
12) B 4,4'-DDE	6.200	5.253	105.6E6	83273263	48.537	49.844
13) MA Dieldrin	6.352	5.385	116.4E6	90972162	49.120	49.371
14) MA Endrin	6.582	5.660	93906792	74314065	46.709	45.370
15) B Endosulfa...	6.800	5.954	102.2E6	79863092	49.001	49.590
16) A 4,4'-DDD	6.715	5.807	91377773	73523425	52.167	52.159
17) MA 4,4'-DDT	7.029	6.058	85308503	67689282	46.336	44.574
18) B Endrin al...	6.930	6.133	83010474	65170179	53.553	53.702
19) B Endosulfa...	7.163	6.355	94975715	77764953	49.627	49.448
20) A Methoxychlor	7.504	6.633	46609754	38334808	47.456	43.093
21) B Endrin ke...	7.648	6.861	107.5E6	94029071	51.076	51.598
22) Mirex	8.122	7.043	78467702	71381660	47.167	46.479
23) Chlordane-1	0.000	3.799	0	18677	N.D.	0.285 #
24) Chlordane-2	5.267f	4.385	129.3E6	254956	1076.795	3.196 #
25) Chlordane-3	5.948	5.000	116.2E6	91490170	290.365	411.024 #
26) Chlordane-4	6.028	5.064	116.2E6	92054925	237.788	435.376 #
27) Chlordane-5	0.000	5.734	0	52398	N.D.	0.772 #

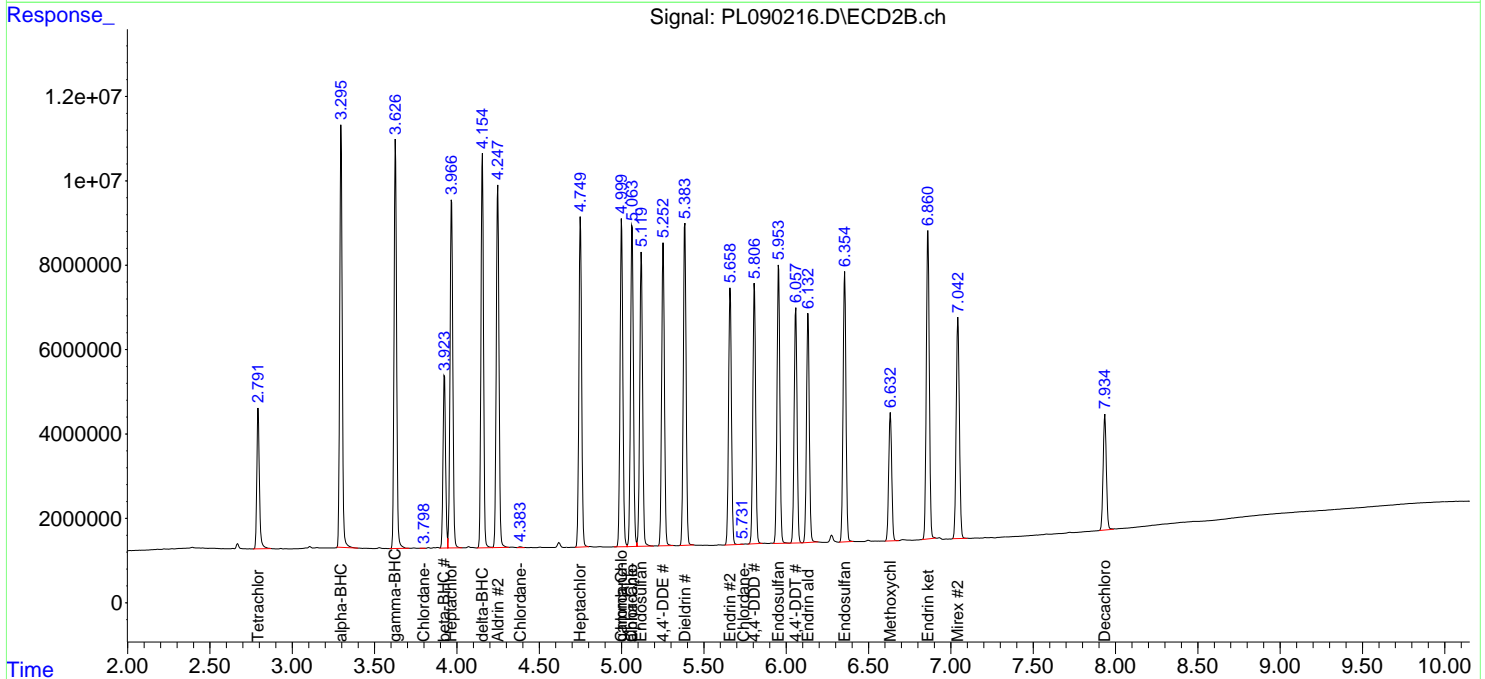
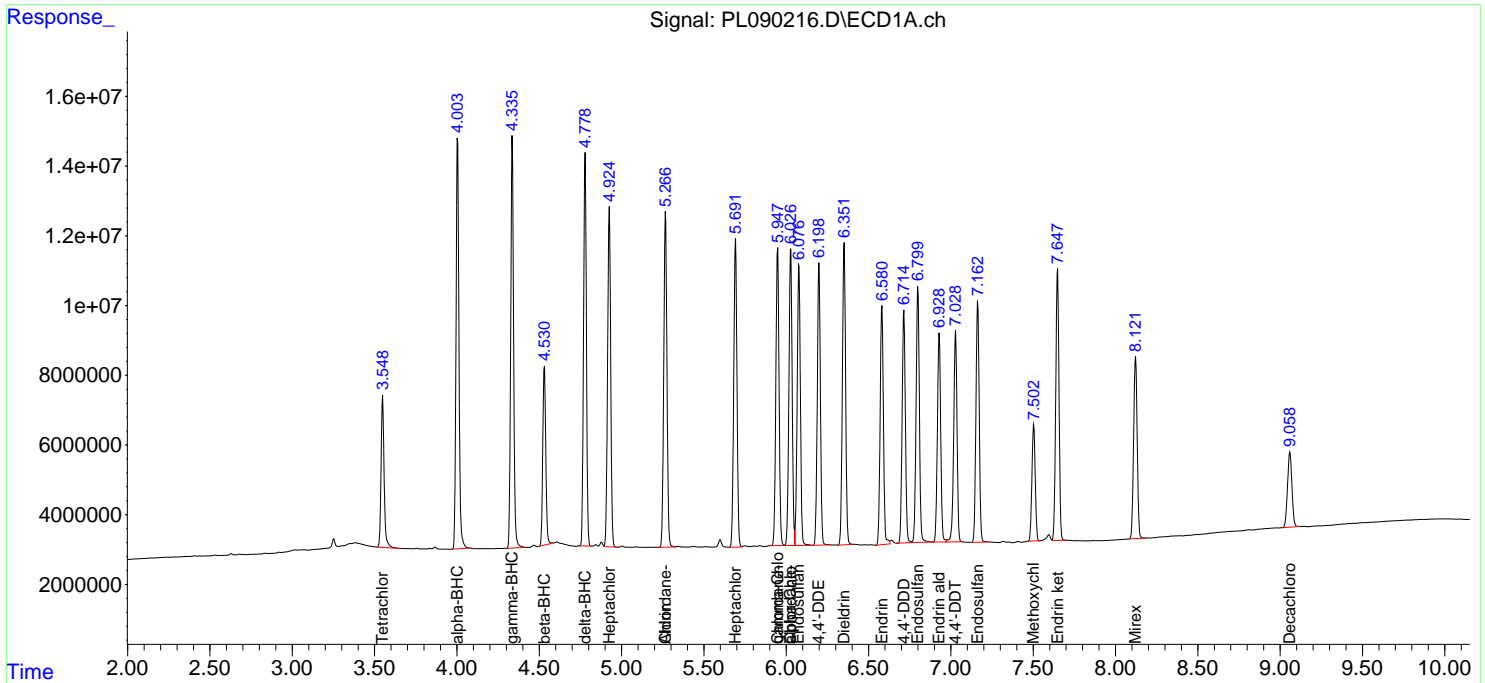
(f)=RT Delta > 1/2 Window (#)=Amounts differ by > 25% (m)=manual int.

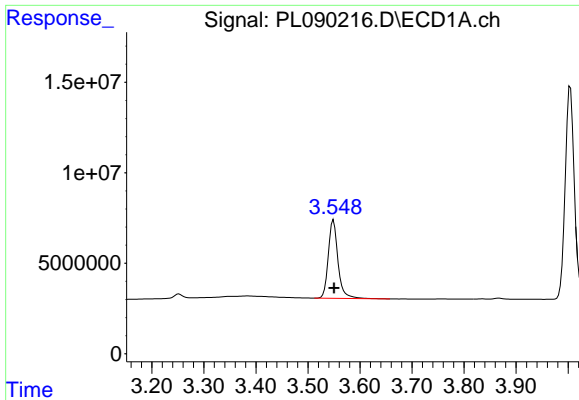
Data Path : Z:\pestpcbsrv\HPCHEM1\ECD\_L\Data\PL061824\  
 Data File : PL090216.D  
 Signal(s) : Signal #1: ECD1A.ch Signal #2: ECD2B.ch  
 Acq On : 18 Jun 2024 11:56  
 Operator : AR\AJ  
 Sample : PB161535BS  
 Misc :  
 ALS Vial : 6 Sample Multiplier: 1

Instrument :  
 ECD\_L  
 ClientSampleId :  
 PB161535BS

Integration File signal 1: autoint1.e  
 Integration File signal 2: autoint2.e  
 Quant Time: Jun 19 01:18:57 2024  
 Quant Method : Z:\pestpcbsrv\HPCHEM1\ECD\_L\methods\PL052424.M  
 Quant Title : GC Extractables  
 QLast Update : Fri May 24 14:57:01 2024  
 Response via : Initial Calibration  
 Integrator: ChemStation

Volume Inj. : 1 µl  
 Signal #1 Phase : ZB-MR2 Signal #2 Phase: ZB-MR1  
 Signal #1 Info : 30M x 0.32mm x0.2 Signal #2 Info : 30M x 0.32mm x0.5µm

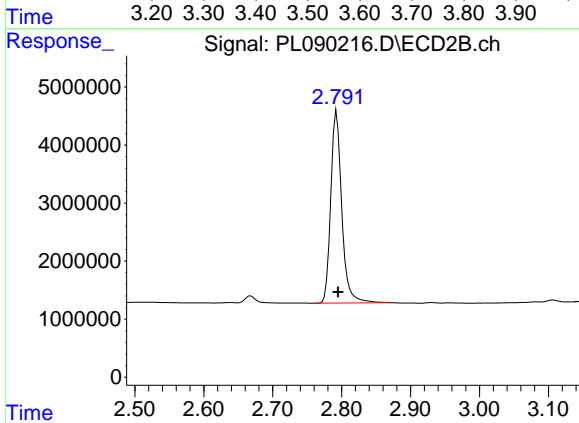




#1 Tetrachloro-m-xylene

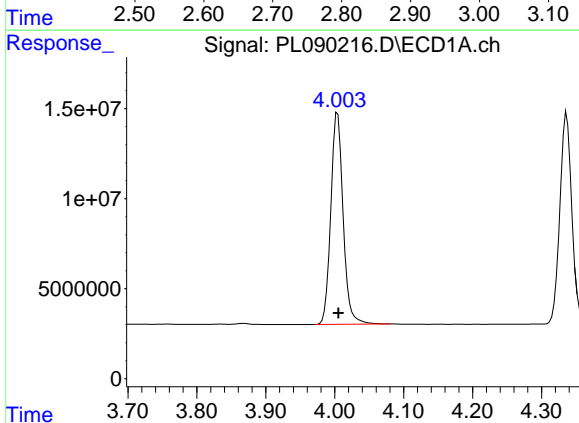
R.T.: 3.549 min  
 Delta R.T.: -0.001 min  
 Response: 56147728  
 Conc: 26.82 ng/ml

Instrument :  
 ECD\_L  
 ClientSampleId :  
 PB161535BS



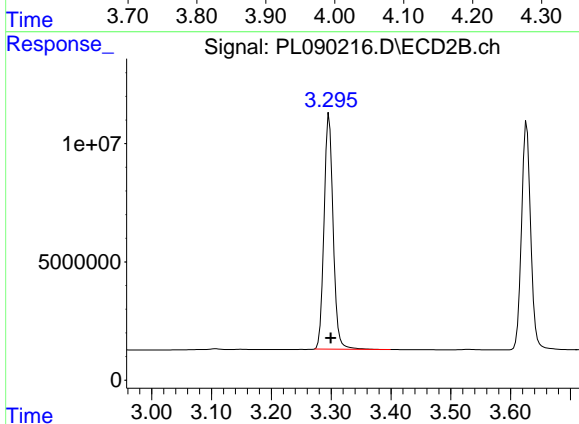
#1 Tetrachloro-m-xylene

R.T.: 2.793 min  
 Delta R.T.: -0.002 min  
 Response: 36667878  
 Conc: 25.57 ng/ml



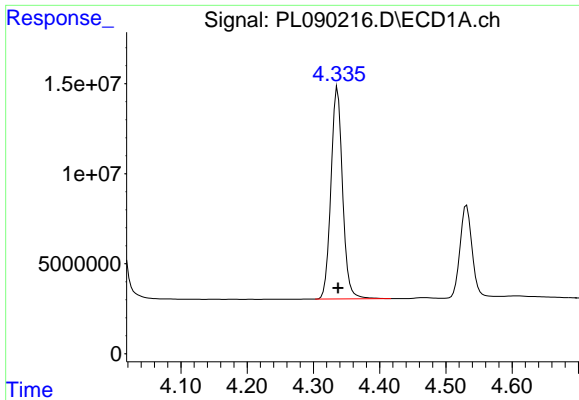
#2 alpha-BHC

R.T.: 4.004 min  
 Delta R.T.: 0.000 min  
 Response: 145745105  
 Conc: 48.88 ng/ml



#2 alpha-BHC

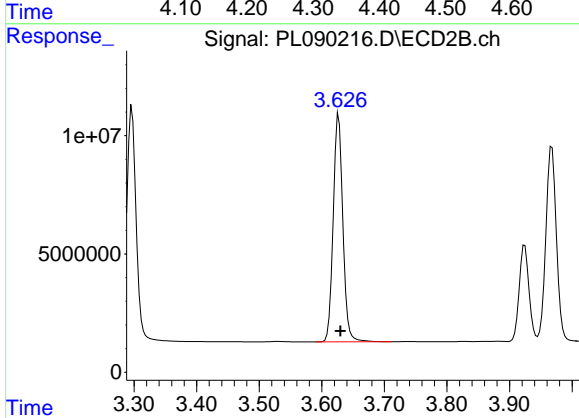
R.T.: 3.297 min  
 Delta R.T.: -0.003 min  
 Response: 104572597  
 Conc: 48.92 ng/ml



#3 gamma-BHC (Lindane)

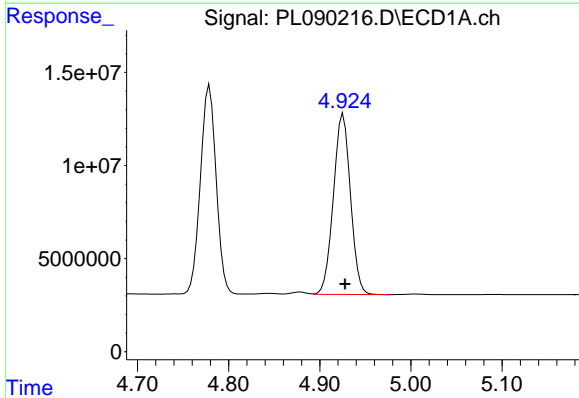
R.T.: 4.336 min  
Delta R.T.: -0.001 min  
Response: 143491885  
Conc: 49.37 ng/ml

Instrument :  
ECD\_L  
ClientSampleId :  
PB161535BS



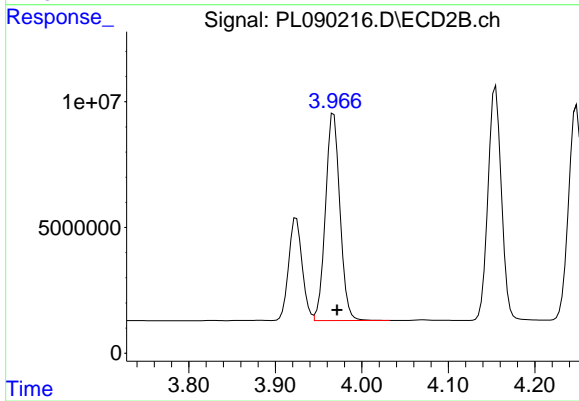
#3 gamma-BHC (Lindane)

R.T.: 3.627 min  
Delta R.T.: -0.003 min  
Response: 103197173  
Conc: 49.34 ng/ml



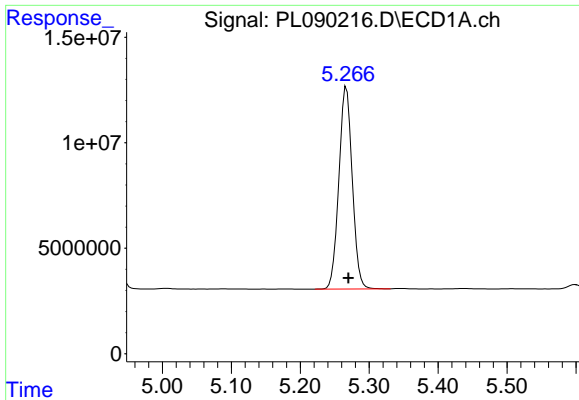
#4 Heptachlor

R.T.: 4.926 min  
Delta R.T.: -0.002 min  
Response: 126081971  
Conc: 48.30 ng/ml



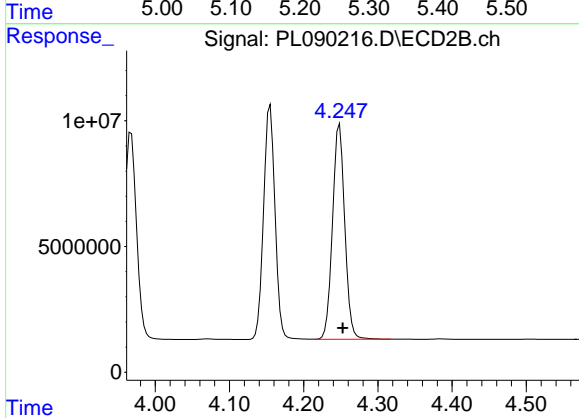
#4 Heptachlor

R.T.: 3.968 min  
Delta R.T.: -0.004 min  
Response: 95615856  
Conc: 47.91 ng/ml

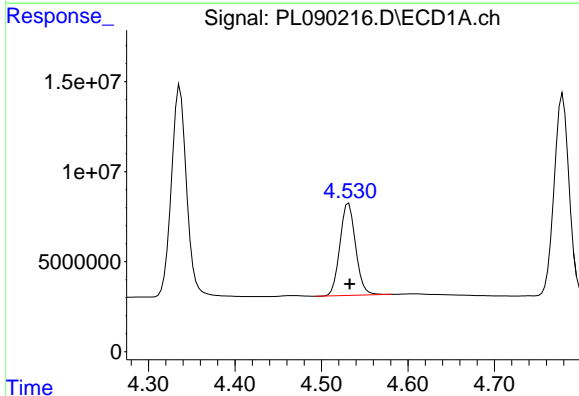


#5 Aldrin  
 R.T.: 5.267 min  
 Delta R.T.: -0.003 min  
 Response: 129316731  
 Conc: 48.66 ng/ml

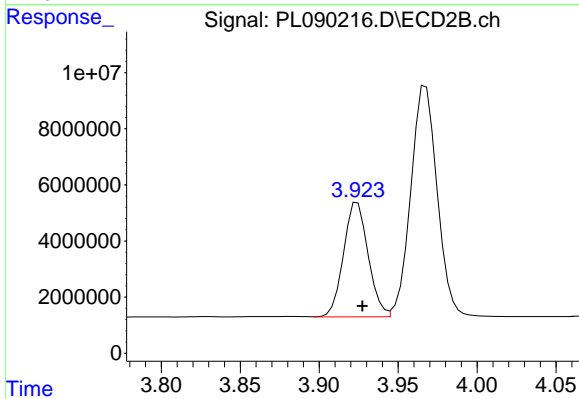
Instrument :  
 ECD\_L  
 ClientSampleId :  
 PB161535BS



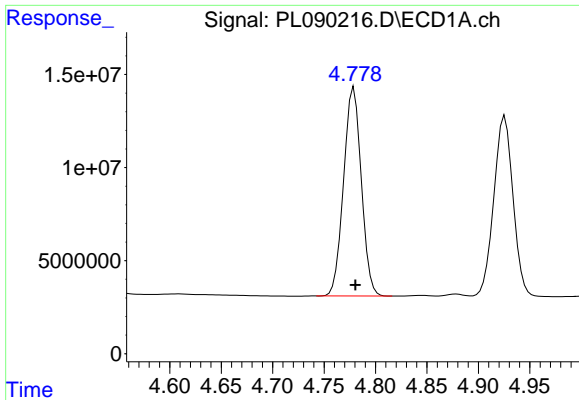
#5 Aldrin  
 R.T.: 4.248 min  
 Delta R.T.: -0.004 min  
 Response: 98456715  
 Conc: 49.27 ng/ml



#6 beta-BHC  
 R.T.: 4.532 min  
 Delta R.T.: -0.001 min  
 Response: 63978656  
 Conc: 48.98 ng/ml



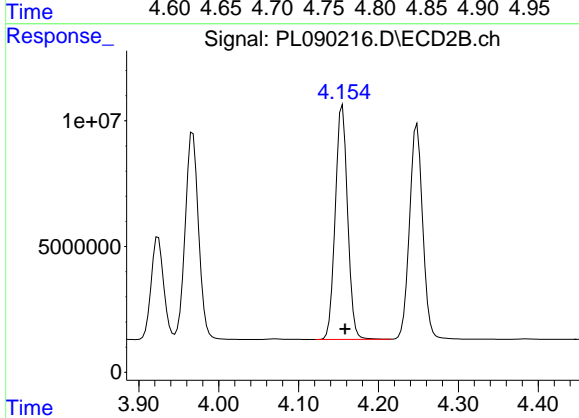
#6 beta-BHC  
 R.T.: 3.924 min  
 Delta R.T.: -0.003 min  
 Response: 44299657  
 Conc: 48.43 ng/ml



#7 delta-BHC

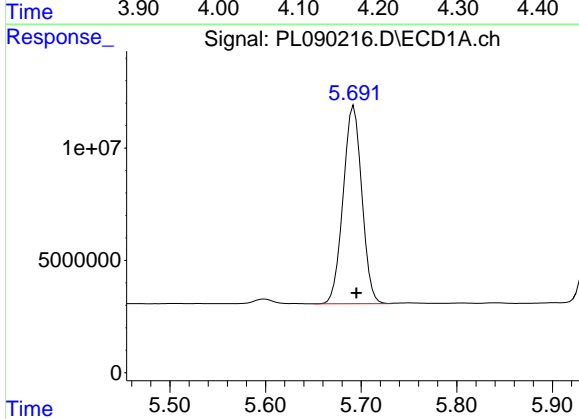
R.T.: 4.779 min  
 Delta R.T.: -0.002 min  
 Response: 134331716  
 Conc: 48.76 ng/ml

Instrument :  
 ECD\_L  
 ClientSampleId :  
 PB161535BS



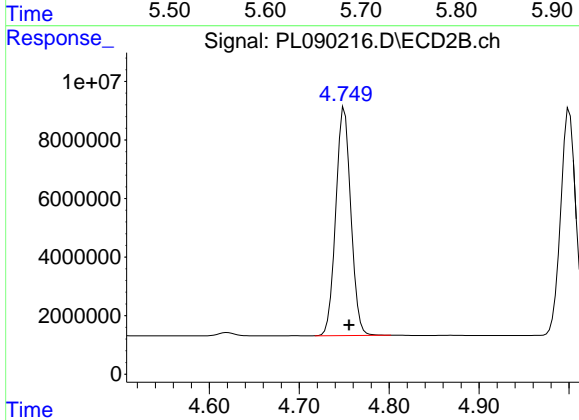
#7 delta-BHC

R.T.: 4.155 min  
 Delta R.T.: -0.003 min  
 Response: 100036427  
 Conc: 49.63 ng/ml



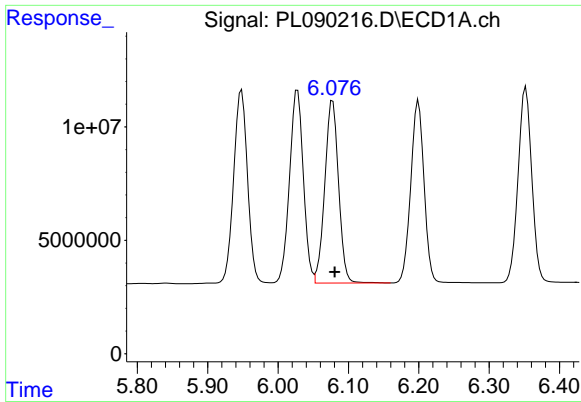
#8 Heptachlor epoxide

R.T.: 5.692 min  
 Delta R.T.: -0.003 min  
 Response: 120160843  
 Conc: 48.24 ng/ml



#8 Heptachlor epoxide

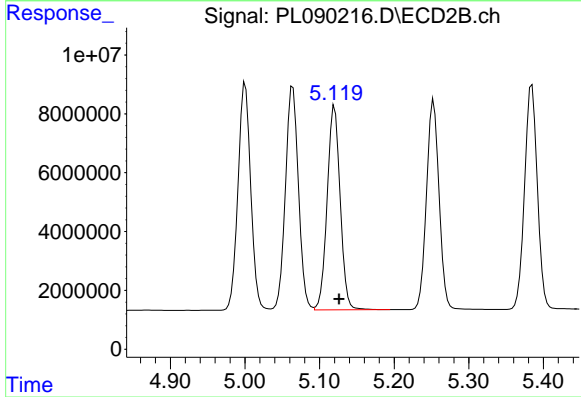
R.T.: 4.750 min  
 Delta R.T.: -0.005 min  
 Response: 90688264  
 Conc: 49.42 ng/ml



#9 Endosulfan I

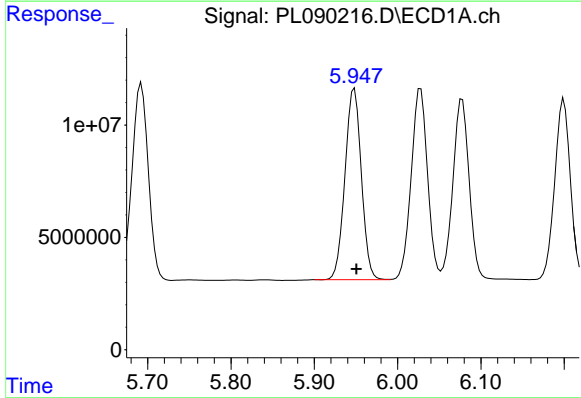
R.T.: 6.078 min  
 Delta R.T.: -0.003 min  
 Response: 109523732  
 Conc: 48.49 ng/ml

Instrument :  
 ECD\_L  
 ClientSampleId :  
 PB161535BS



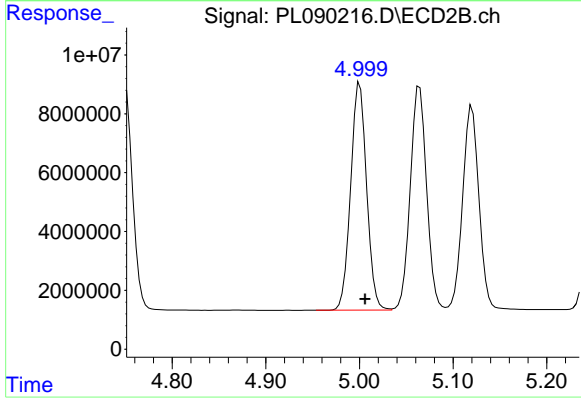
#9 Endosulfan I

R.T.: 5.120 min  
 Delta R.T.: -0.006 min  
 Response: 84227514  
 Conc: 49.30 ng/ml



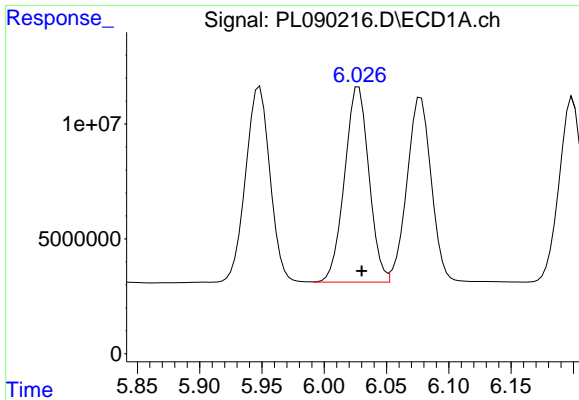
#10 gamma-Chlordane

R.T.: 5.948 min  
 Delta R.T.: -0.003 min  
 Response: 116189048  
 Conc: 48.05 ng/ml



#10 gamma-Chlordane

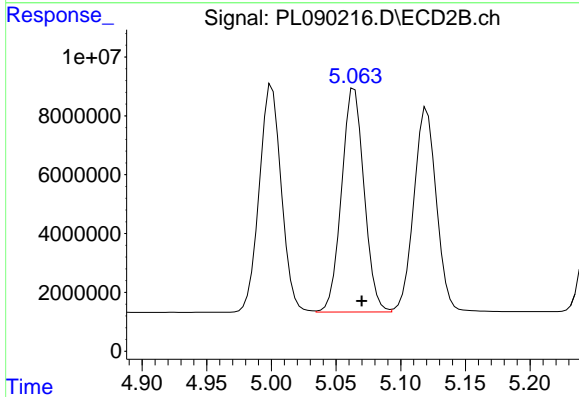
R.T.: 5.000 min  
 Delta R.T.: -0.006 min  
 Response: 91490170  
 Conc: 49.09 ng/ml



#11 alpha-Chlordane

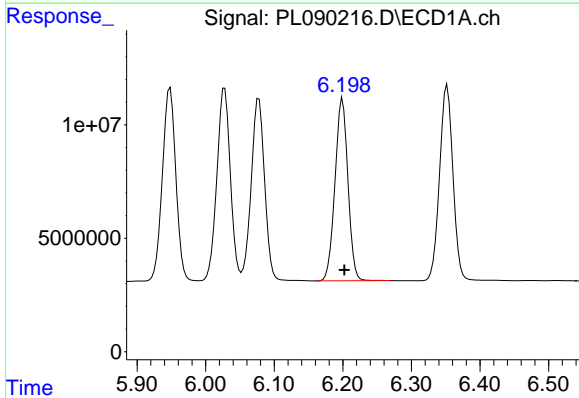
R.T.: 6.028 min  
 Delta R.T.: -0.002 min  
 Response: 116249990  
 Conc: 48.40 ng/ml

Instrument :  
 ECD\_L  
 ClientSampleId :  
 PB161535BS



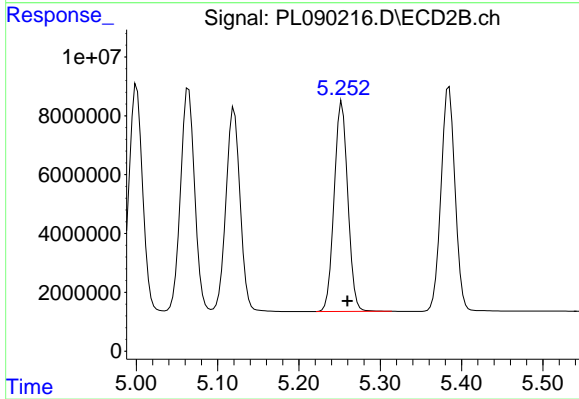
#11 alpha-Chlordane

R.T.: 5.064 min  
 Delta R.T.: -0.006 min  
 Response: 92054925  
 Conc: 49.06 ng/ml



#12 4,4'-DDE

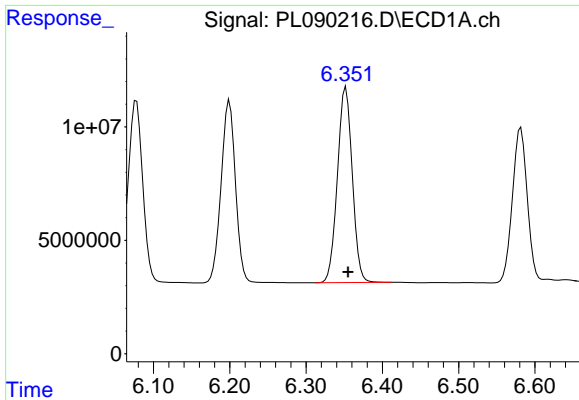
R.T.: 6.200 min  
 Delta R.T.: -0.003 min  
 Response: 105584546  
 Conc: 48.54 ng/ml



#12 4,4'-DDE

R.T.: 5.253 min  
 Delta R.T.: -0.006 min  
 Response: 83273263  
 Conc: 49.84 ng/ml

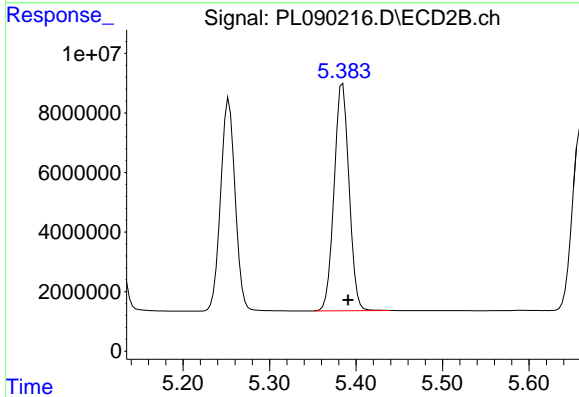




#13 Dieldrin

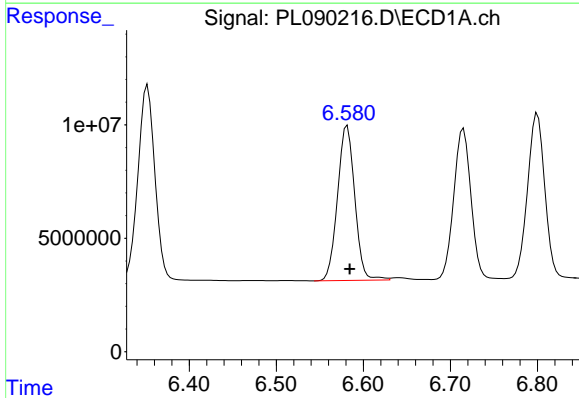
R.T.: 6.352 min  
 Delta R.T.: -0.003 min  
 Response: 116449661  
 Conc: 49.12 ng/ml

Instrument :  
 ECD\_L  
 ClientSampleId :  
 PB161535BS



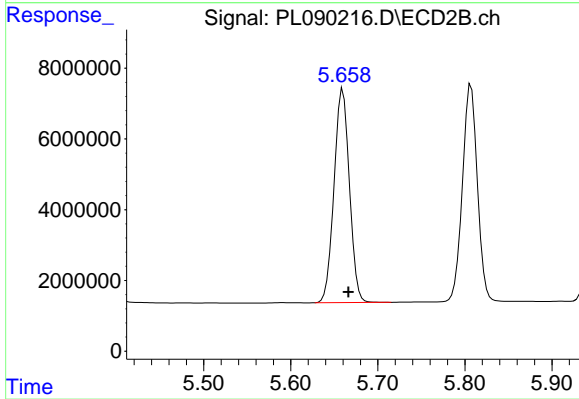
#13 Dieldrin

R.T.: 5.385 min  
 Delta R.T.: -0.006 min  
 Response: 90972162  
 Conc: 49.37 ng/ml



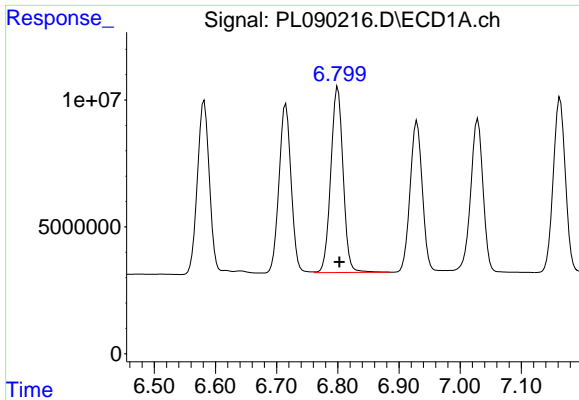
#14 Endrin

R.T.: 6.582 min  
 Delta R.T.: -0.003 min  
 Response: 93906792  
 Conc: 46.71 ng/ml



#14 Endrin

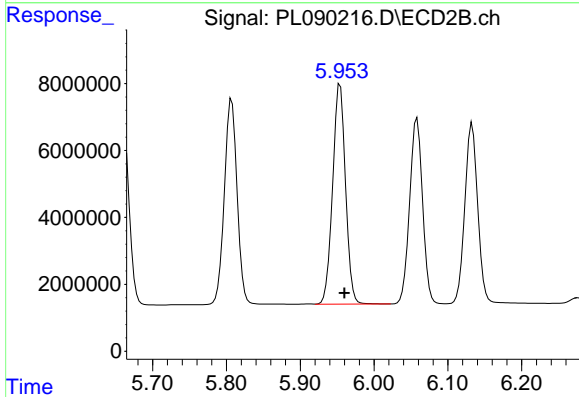
R.T.: 5.660 min  
 Delta R.T.: -0.006 min  
 Response: 74314065  
 Conc: 45.37 ng/ml



#15 Endosulfan II

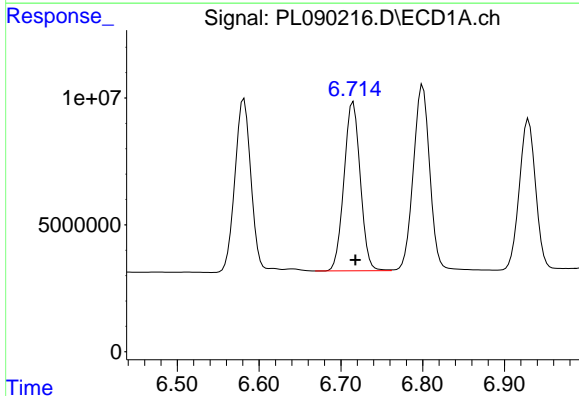
R.T.: 6.800 min  
 Delta R.T.: -0.002 min  
 Response: 102153695  
 Conc: 49.00 ng/ml

Instrument :  
 ECD\_L  
 ClientSampleId :  
 PB161535BS



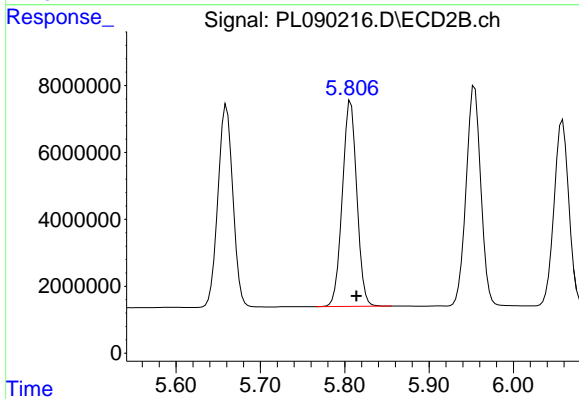
#15 Endosulfan II

R.T.: 5.954 min  
 Delta R.T.: -0.006 min  
 Response: 79863092  
 Conc: 49.59 ng/ml



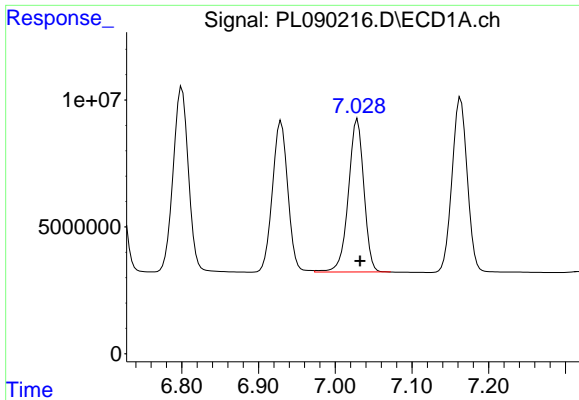
#16 4,4'-DDD

R.T.: 6.715 min  
 Delta R.T.: -0.003 min  
 Response: 91377773  
 Conc: 52.17 ng/ml



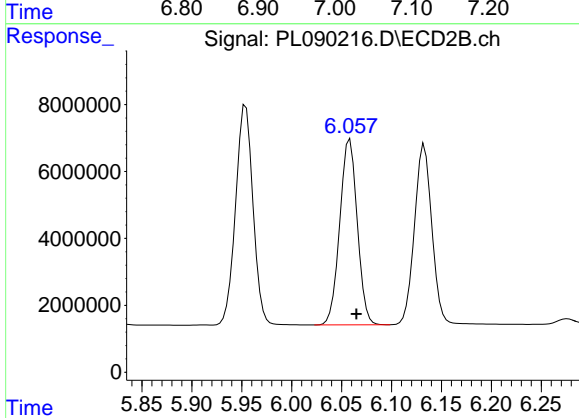
#16 4,4'-DDD

R.T.: 5.807 min  
 Delta R.T.: -0.007 min  
 Response: 73523425  
 Conc: 52.16 ng/ml

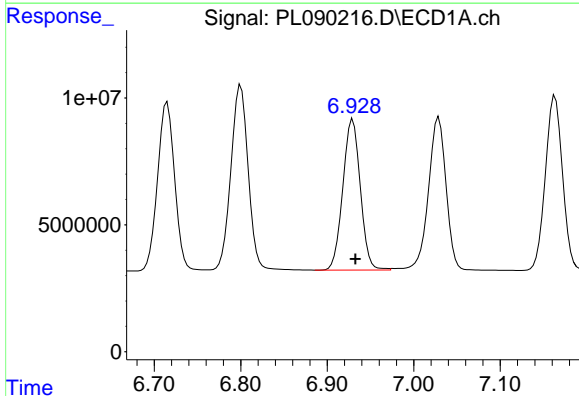


#17 4,4'-DDT  
 R.T.: 7.029 min  
 Delta R.T.: -0.003 min  
 Response: 85308503  
 Conc: 46.34 ng/ml

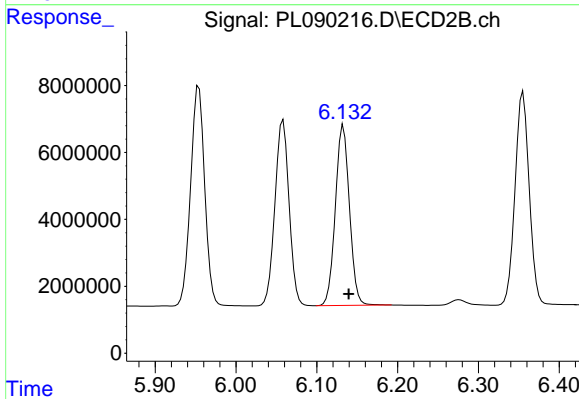
Instrument :  
 ECD\_L  
 ClientSampleId :  
 PB161535BS



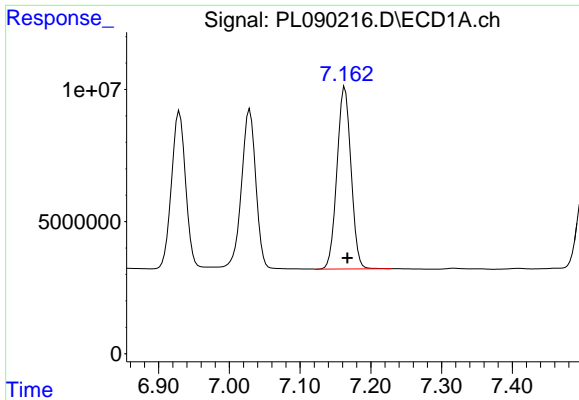
#17 4,4'-DDT  
 R.T.: 6.058 min  
 Delta R.T.: -0.006 min  
 Response: 67689282  
 Conc: 44.57 ng/ml



#18 Endrin aldehyde  
 R.T.: 6.930 min  
 Delta R.T.: -0.003 min  
 Response: 83010474  
 Conc: 53.55 ng/ml



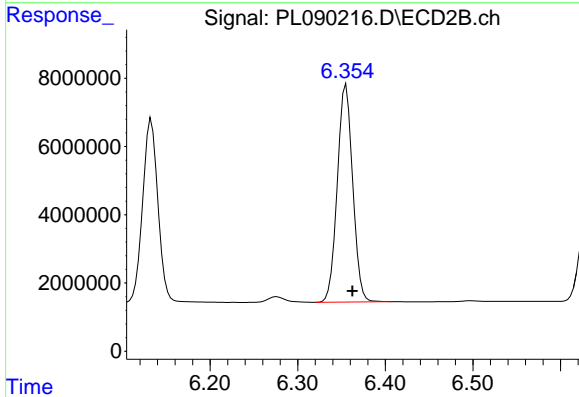
#18 Endrin aldehyde  
 R.T.: 6.133 min  
 Delta R.T.: -0.007 min  
 Response: 65170179  
 Conc: 53.70 ng/ml



#19 Endosulfan Sulfate

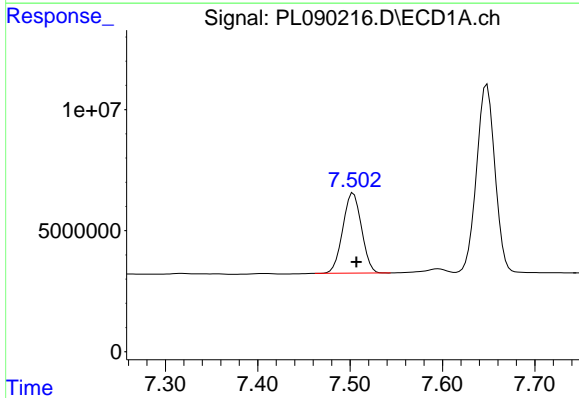
R.T.: 7.163 min  
 Delta R.T.: -0.003 min  
 Response: 94975715  
 Conc: 49.63 ng/ml

Instrument :  
 ECD\_L  
 ClientSampleId :  
 PB161535BS



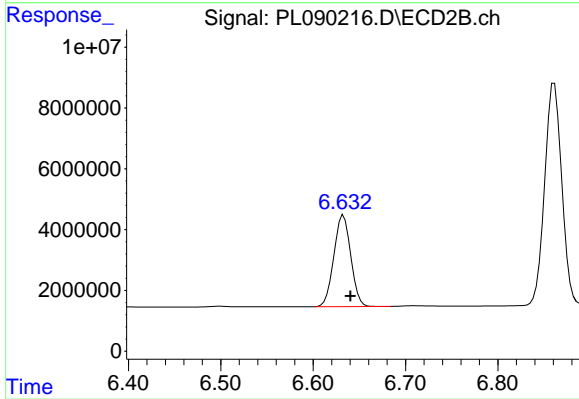
#19 Endosulfan Sulfate

R.T.: 6.355 min  
 Delta R.T.: -0.007 min  
 Response: 77764953  
 Conc: 49.45 ng/ml



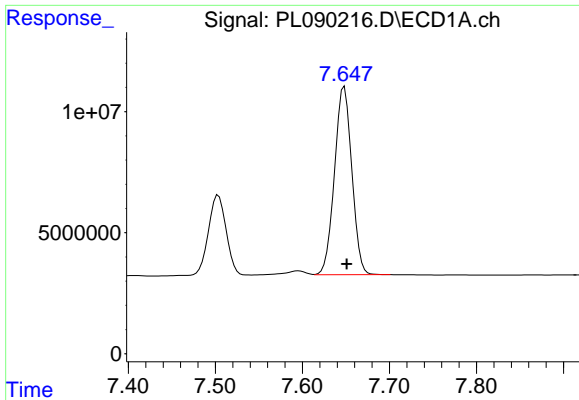
#20 Methoxychlor

R.T.: 7.504 min  
 Delta R.T.: -0.003 min  
 Response: 46609754  
 Conc: 47.46 ng/ml



#20 Methoxychlor

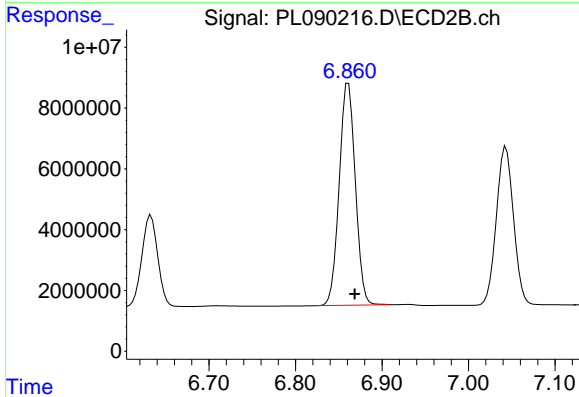
R.T.: 6.633 min  
 Delta R.T.: -0.007 min  
 Response: 38334808  
 Conc: 43.09 ng/ml



#21 Endrin ketone

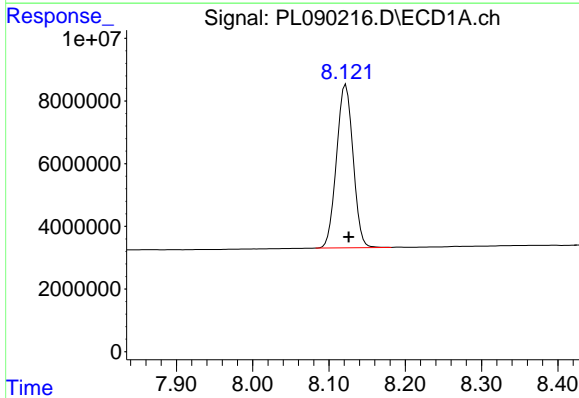
R.T.: 7.648 min  
 Delta R.T.: -0.003 min  
 Response: 107549229  
 Conc: 51.08 ng/ml

Instrument :  
 ECD\_L  
 ClientSampleId :  
 PB161535BS



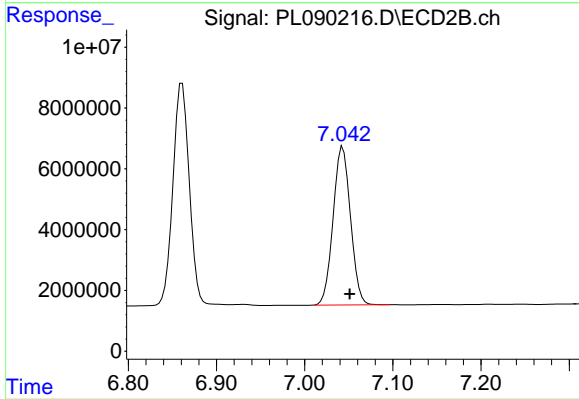
#21 Endrin ketone

R.T.: 6.861 min  
 Delta R.T.: -0.007 min  
 Response: 94029071  
 Conc: 51.60 ng/ml



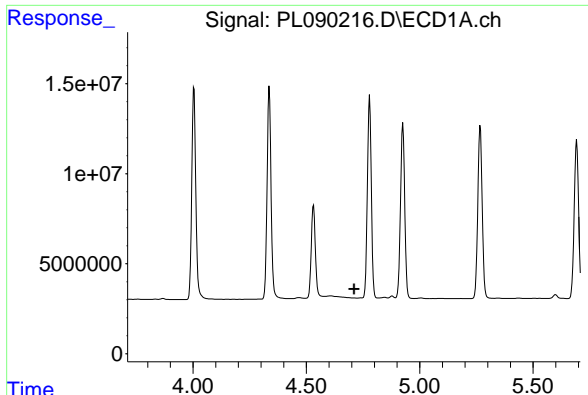
#22 Mirex

R.T.: 8.122 min  
 Delta R.T.: -0.004 min  
 Response: 78467702  
 Conc: 47.17 ng/ml



#22 Mirex

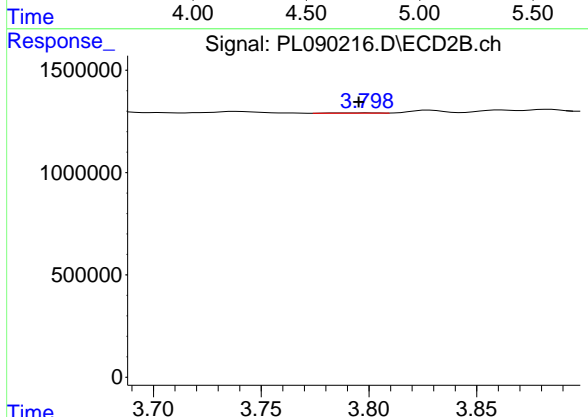
R.T.: 7.043 min  
 Delta R.T.: -0.008 min  
 Response: 71381660  
 Conc: 46.48 ng/ml



#23 Chlordane-1

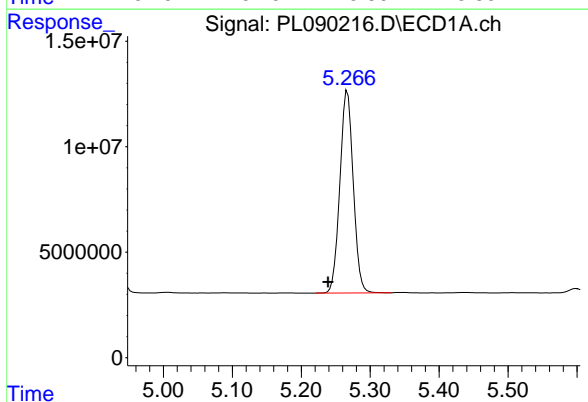
R.T.: 0.000 min  
 Exp R.T.: 4.710 min  
 Response: 0  
 Conc: N.D.

Instrument :  
 ECD\_L  
 ClientSampleId :  
 PB161535BS



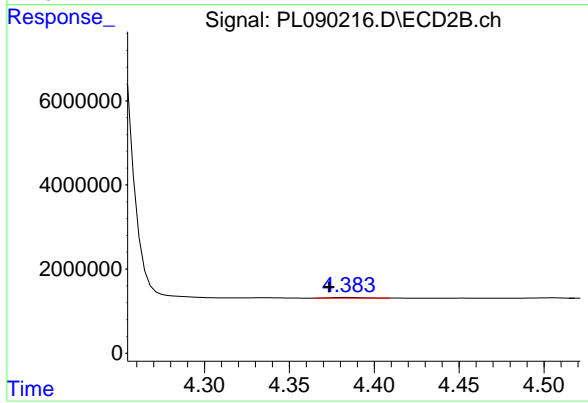
#23 Chlordane-1

R.T.: 3.799 min  
 Delta R.T.: 0.004 min  
 Response: 18677  
 Conc: 0.28 ng/ml



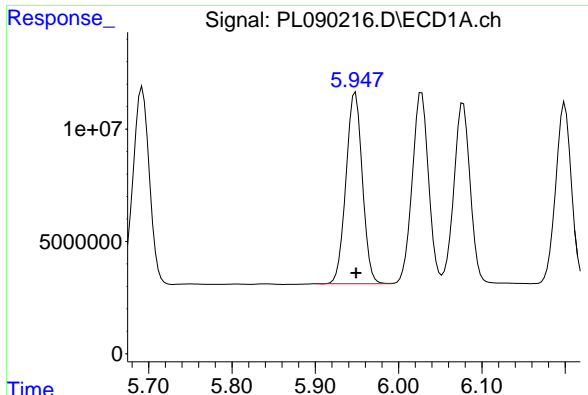
#24 Chlordane-2

R.T.: 5.267 min  
 Delta R.T.: 0.028 min  
 Response: 129316731  
 Conc: 1076.79 ng/ml



#24 Chlordane-2

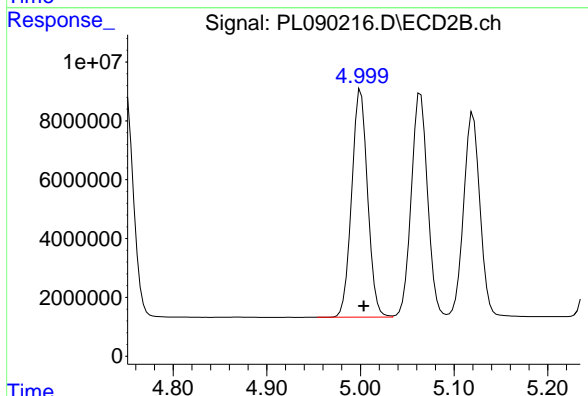
R.T.: 4.385 min  
 Delta R.T.: 0.011 min  
 Response: 254956  
 Conc: 3.20 ng/ml



#25 Chlordane-3

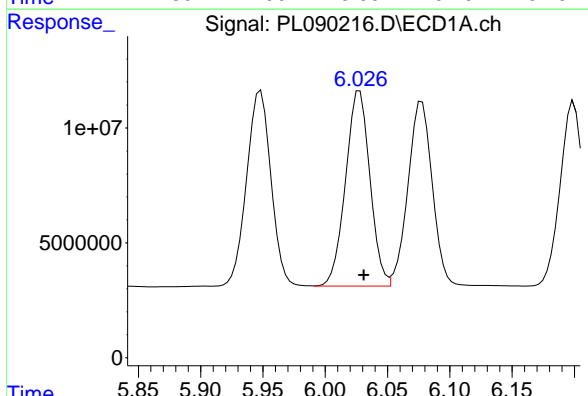
R.T.: 5.948 min  
 Delta R.T.: 0.000 min  
 Response: 116189048  
 Conc: 290.36 ng/ml

Instrument :  
 ECD\_L  
 ClientSampleId :  
 PB161535BS



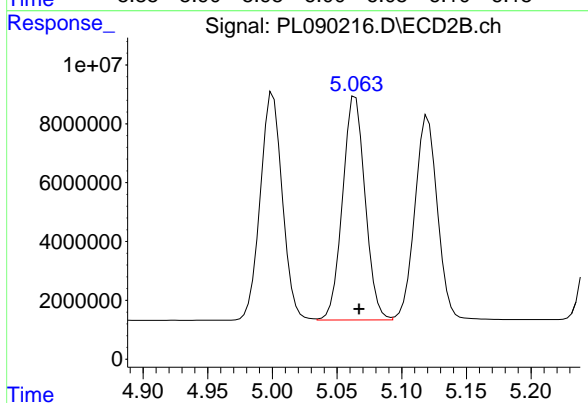
#25 Chlordane-3

R.T.: 5.000 min  
 Delta R.T.: -0.003 min  
 Response: 91490170  
 Conc: 411.02 ng/ml



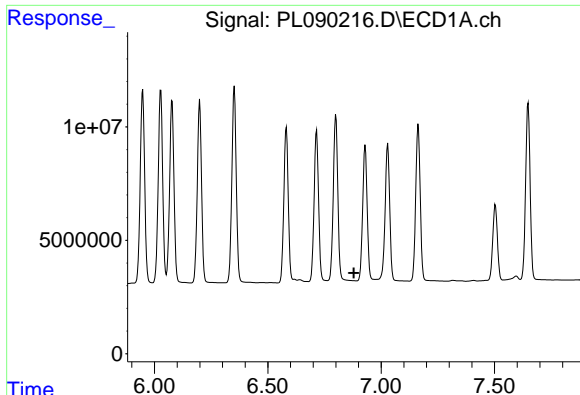
#26 Chlordane-4

R.T.: 6.028 min  
 Delta R.T.: -0.003 min  
 Response: 116249990  
 Conc: 237.79 ng/ml



#26 Chlordane-4

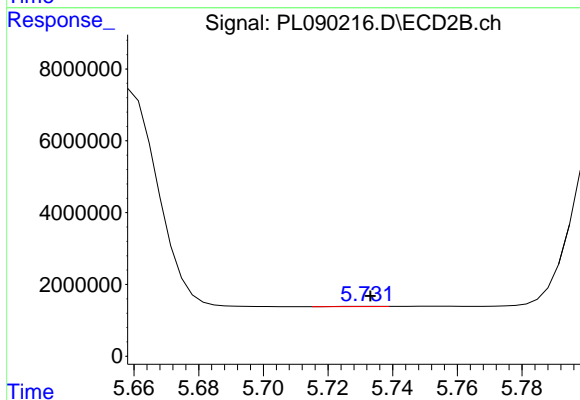
R.T.: 5.064 min  
 Delta R.T.: -0.003 min  
 Response: 92054925  
 Conc: 435.38 ng/ml



#27 Chlordane-5

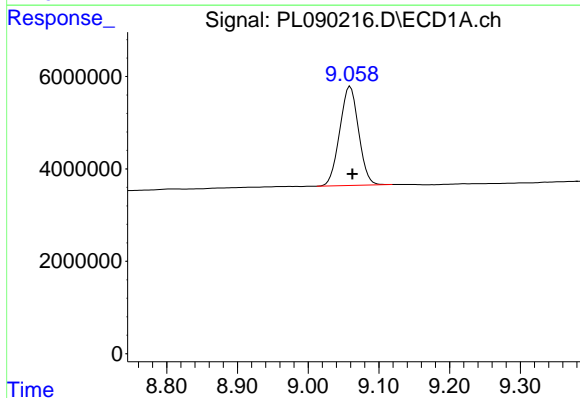
R.T.: 0.000 min  
 Exp R.T.: 6.879 min  
 Response: 0  
 Conc: N.D.

Instrument :  
 ECD\_L  
 ClientSampleId :  
 PB161535BS



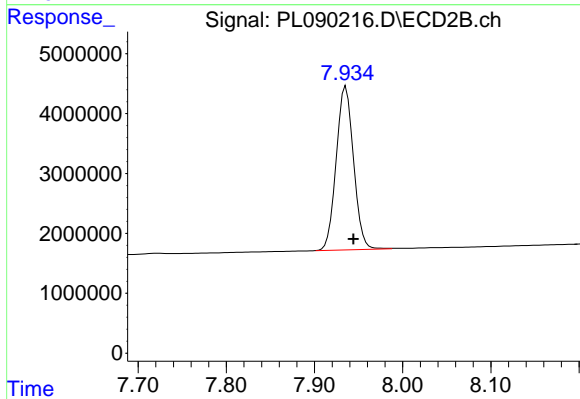
#27 Chlordane-5

R.T.: 5.734 min  
 Delta R.T.: 0.001 min  
 Response: 52398  
 Conc: 0.77 ng/ml



#28 Decachlorobiphenyl

R.T.: 9.060 min  
 Delta R.T.: -0.003 min  
 Response: 39844470  
 Conc: 27.10 ng/ml



#28 Decachlorobiphenyl

R.T.: 7.936 min  
 Delta R.T.: -0.008 min  
 Response: 37349090  
 Conc: 25.13 ng/ml