

Data Path : Z:\pestpcbsrv\HPCHEM1\ECD_L\Data\PL061919\
 Data File : PL049624.D
 Signal(s) : Signal #1: ECD1A.ch Signal #2: ECD2B.ch
 Acq On : 19 Jun 2019 11:52
 Operator : SM\AJ
 Sample : PB120723BS
 Misc :
 ALS Vial : 5 Sample Multiplier: 1

Instrument :
 ECD_L
Client Sampled :
 PB120723BS

Manual Integrations
APPROVED
 Ankita
 6/20/2019 10:01:44 AM

Integration File signal 1: autoint1.e
 Integration File signal 2: autoint2.e
 Quant Time: Jun 20 01:00:30 2019
 Quant Method : Z:\pestpcbsrv\HPCHEM1\ECD_L\methods\PL053019.M
 Quant Title : GC Extractables
 QLast Update : Fri May 31 01:35:35 2019
 Response via : Initial Calibration
 Integrator: ChemStation

Volume Inj. : 1 µl
 Signal #1 Phase : ZB-MR2 Signal #2 Phase: ZB-MR1
 Signal #1 Info : 30M x 0.32mm x0.2 Signal #2 Info : 30M x 0.32mm x0.5µm

	Compound	RT#1	RT#2	Resp#1	Resp#2	ng/ml	ng/ml

System Monitoring Compounds							
1)	SA Tetrachlo...	3.329	3.936	180.5E6	56299006	16.380	19.487
2)	SA Decachlor...	7.997	8.973	196.2E6	55609627	15.426	16.651
Target Compounds							
2)	A alpha-BHC	3.757	4.325	799.5E6	209.9E6	44.377	52.375
3)	MA gamma-BHC...	4.032	4.608	744.4E6	198.0E6	43.921m	52.898
4)	MA Heptachlor	4.318	5.110	819.6E6	207.7E6	46.282	51.684m
5)	MB Aldrin	4.557	5.414	799.1E6	191.0E6	46.802	51.901
6)	B beta-BHC	4.288	4.784	315.4E6	93095584	45.385	54.048
7)	B delta-BHC	4.481	4.998	681.6E6	153.4E6	42.178	50.025
8)	B Heptachlo...	4.994	5.801	705.8E6	167.1E6	47.592	51.117
9)	A Endosulfan I	5.324	6.156	705.7E6	160.9E6	48.220	49.949
10)	B gamma-Chl...	5.216	6.035	765.7E6	174.4E6	47.963	50.428
11)	B alpha-Chl...	5.272	6.107	740.3E6	171.4E6	47.391	49.416
12)	B 4,4'-DDE	5.440	6.267	712.2E6	165.8E6	45.530	50.508
13)	MA Dieldrin	5.563	6.413	744.6E6	169.4E6	48.699	50.500
14)	MA Endrin	5.816	6.630	680.5E6	135.9E6	47.179	45.554
15)	B Endosulfa...	6.091	6.842	639.8E6	144.2E6	48.453	47.552
16)	A 4,4'-DDD	5.951	6.757	565.8E6	124.5E6	47.543	47.325
17)	MA 4,4'-DDT	6.185	7.054	585.7E6	129.2E6	47.572	46.068
18)	B Endrin al...	6.256	6.966	517.1E6	123.3E6	47.245m	47.798
19)	B Endosulfa...	6.469	7.188	567.4E6	133.5E6	43.698	43.904
20)	A Methoxychlor	6.731	7.515	275.3E6	69984253	42.928	42.214
21)	B Endrin ke...	6.951	7.657	646.4E6	147.0E6	45.419	46.207
22)	Mirex	7.125	8.106	471.6E6	118.2E6	44.757	45.515

(f)=RT Delta > 1/2 Window (#)=Amounts differ by > 25% (m)=manual int.

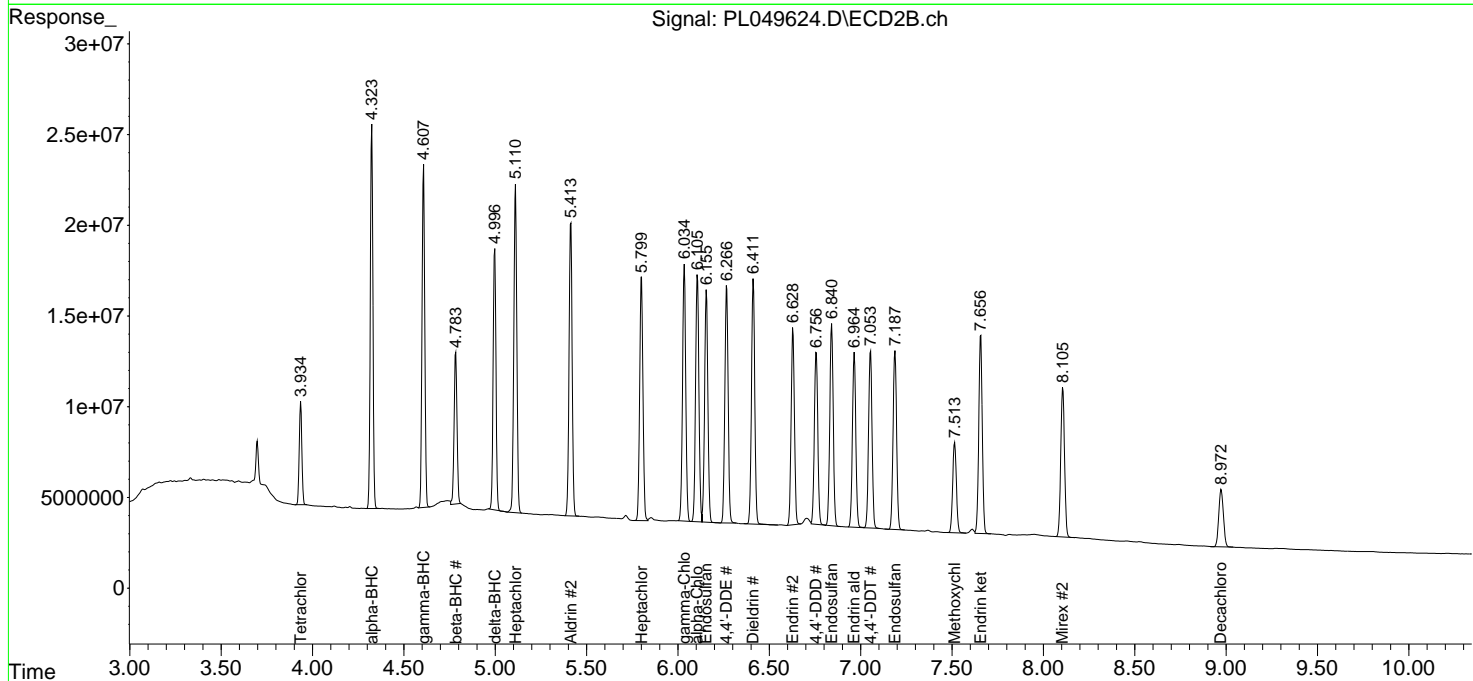
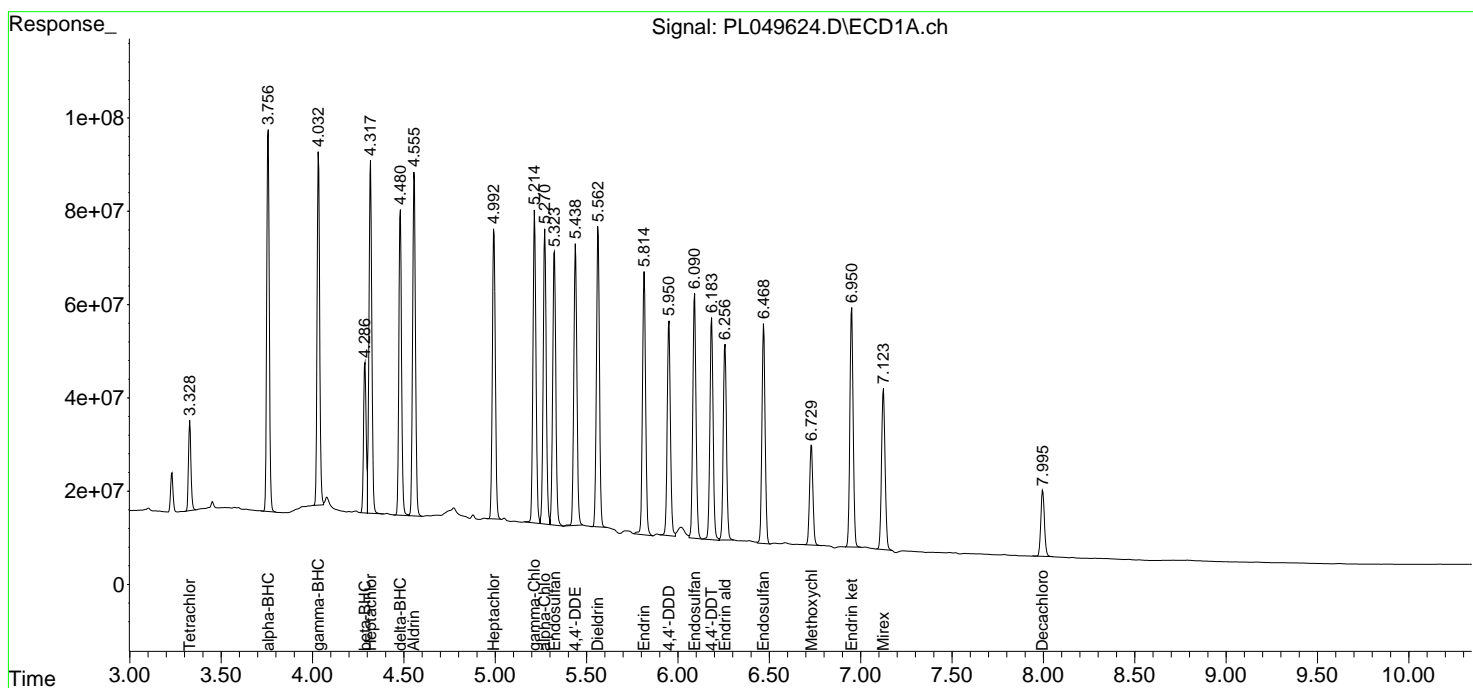
Data Path : Z:\pestpcbsrv\HPCHEM1\ECD_L\Data\PL061919\
 Data File : PL049624.D
 Signal(s) : Signal #1: ECD1A.ch Signal #2: ECD2B.ch
 Acq On : 19 Jun 2019 11:52
 Operator : SM\AJ
 Sample : PB120723BS
 Misc :
 ALS Vial : 5 Sample Multiplier: 1

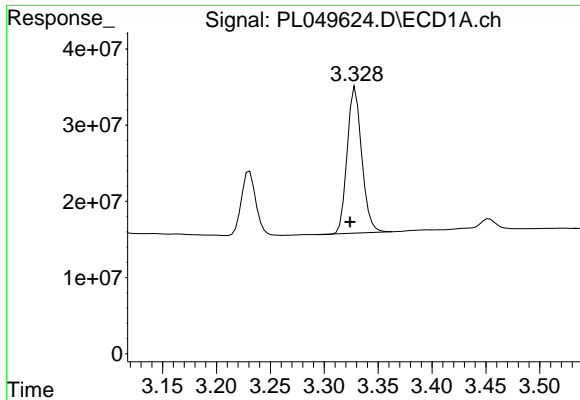
Instrument :
 ECD_L
 ClientSampled :
 PB120723BS

Manual Integrations
APPROVED
 Ankita
 6/20/2019 10:01:44 AM

Integration File signal 1: autoint1.e
 Integration File signal 2: autoint2.e
 Quant Time: Jun 20 01:00:30 2019
 Quant Method : Z:\pestpcbsrv\HPCHEM1\ECD_L\methods\PL053019.M
 Quant Title : GC Extractables
 QLast Update : Fri May 31 01:35:35 2019
 Response via : Initial Calibration
 Integrator: ChemStation

Volume Inj. : 1 µl
 Signal #1 Phase : ZB-MR2 Signal #2 Phase: ZB-MR1
 Signal #1 Info : 30M x 0.32mm x0.2 Signal #2 Info : 30M x 0.32mm x0.5µm

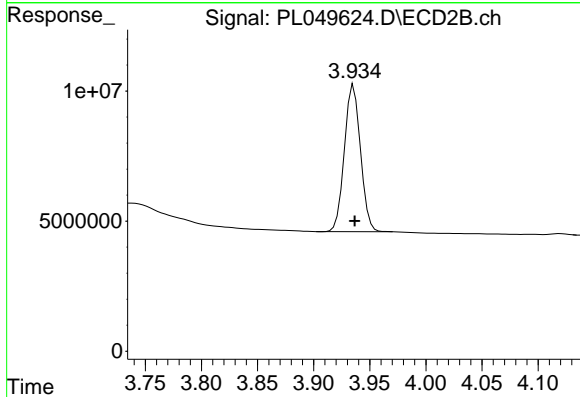




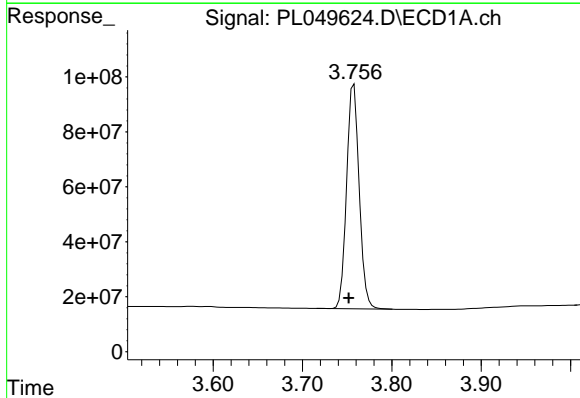
#1 Tetrachloro-m-xylene
 R.T.: 3.329 min
 Delta R.T.: 0.005 min
 Response: 180491853
 Conc: 16.38 ng/ml

Instrument :
 ECD_L
 ClientSampled :
 PB120723BS

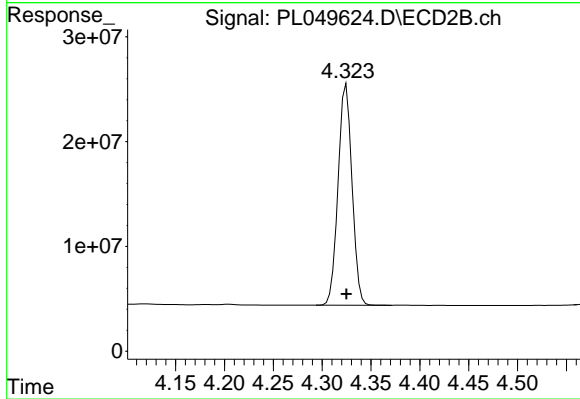
Manual Integrations
 APPROVED
 Ankita
 6/20/2019 10:01:44 AM



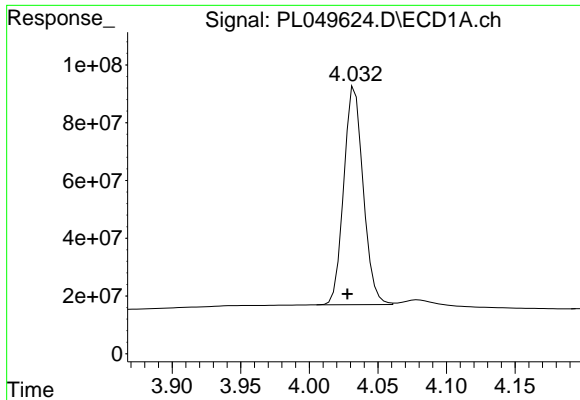
#1 Tetrachloro-m-xylene
 R.T.: 3.936 min
 Delta R.T.: 0.000 min
 Response: 56299006
 Conc: 19.49 ng/ml



#2 alpha-BHC
 R.T.: 3.757 min
 Delta R.T.: 0.006 min
 Response: 799513901
 Conc: 44.38 ng/ml



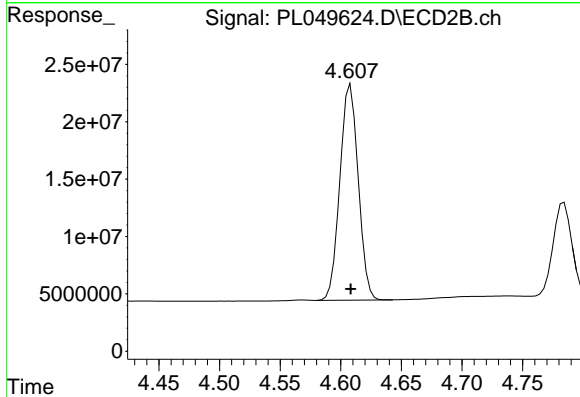
#2 alpha-BHC
 R.T.: 4.325 min
 Delta R.T.: 0.000 min
 Response: 209935001
 Conc: 52.38 ng/ml



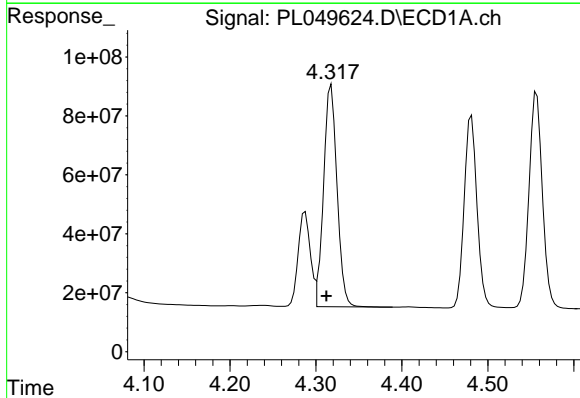
#3 gamma-BHC (Lindane)
 R.T.: 4.032 min
 Delta R.T.: 0.004 min
 Response: 744403681
 Conc: 43.92 ng/ml m

Instrument :
 ECD_L
ClientSampled :
 PB120723BS

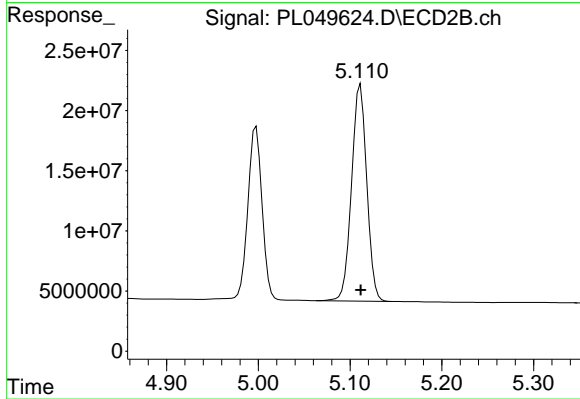
Manual Integrations
APPROVED
 Ankita
 6/20/2019 10:01:44 AM



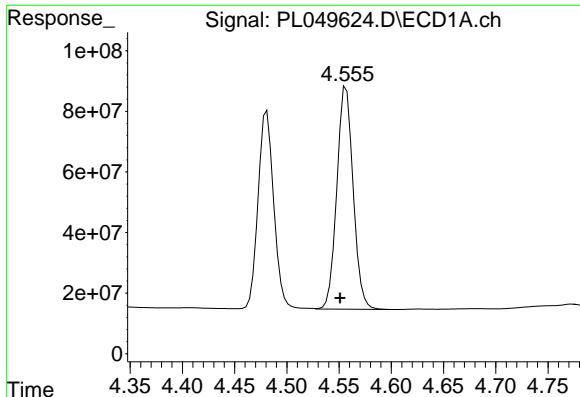
#3 gamma-BHC (Lindane)
 R.T.: 4.608 min
 Delta R.T.: 0.000 min
 Response: 198029000
 Conc: 52.90 ng/ml



#4 Heptachlor
 R.T.: 4.318 min
 Delta R.T.: 0.006 min
 Response: 819561737
 Conc: 46.28 ng/ml



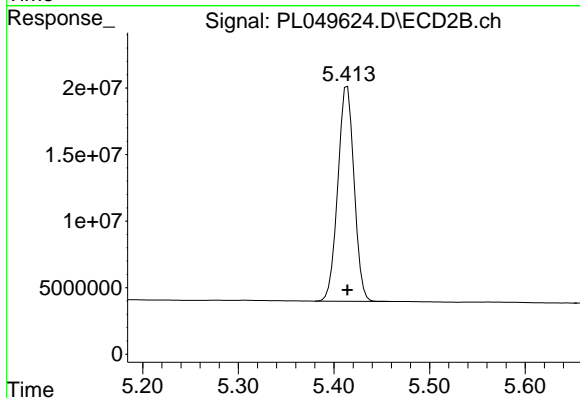
#4 Heptachlor
 R.T.: 5.110 min
 Delta R.T.: -0.001 min
 Response: 207693517
 Conc: 51.68 ng/ml m



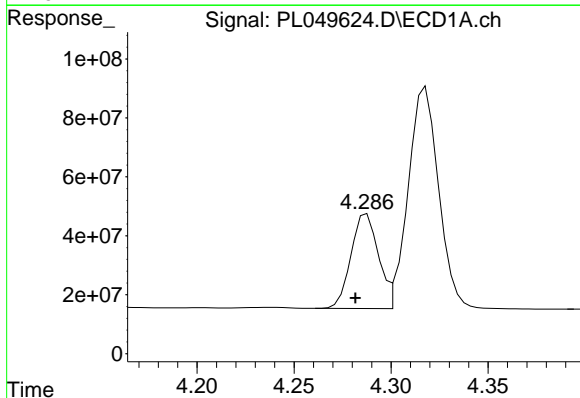
#5 Aldrin
 R.T.: 4.557 min
 Delta R.T.: 0.006 min
 Response: 799109091
 Conc: 46.80 ng/ml

Instrument :
 ECD_L
 ClientSampled :
 PB120723BS

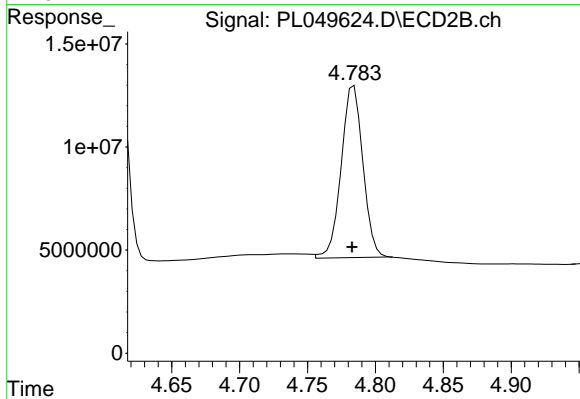
Manual Integrations
 APPROVED
 Ankita
 6/20/2019 10:01:44 AM



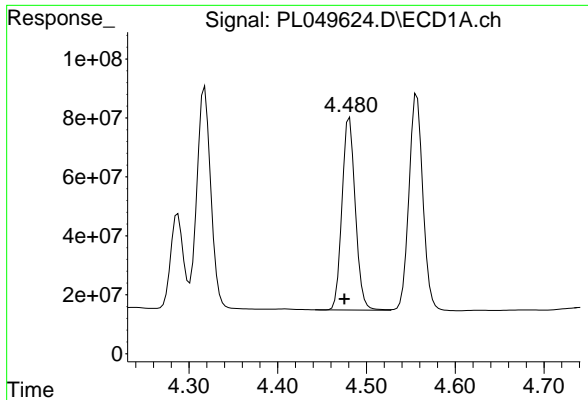
#5 Aldrin
 R.T.: 5.414 min
 Delta R.T.: 0.000 min
 Response: 190953026
 Conc: 51.90 ng/ml



#6 beta-BHC
 R.T.: 4.288 min
 Delta R.T.: 0.006 min
 Response: 315363072
 Conc: 45.38 ng/ml



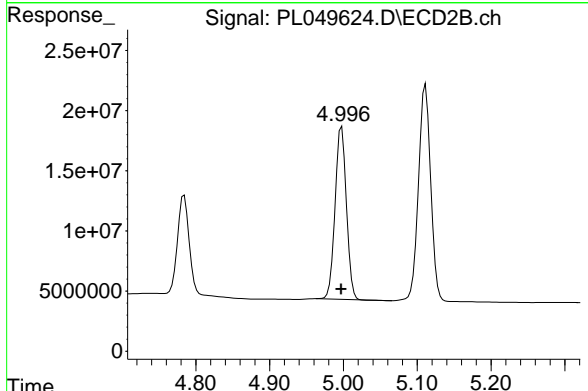
#6 beta-BHC
 R.T.: 4.784 min
 Delta R.T.: 0.001 min
 Response: 93095584
 Conc: 54.05 ng/ml



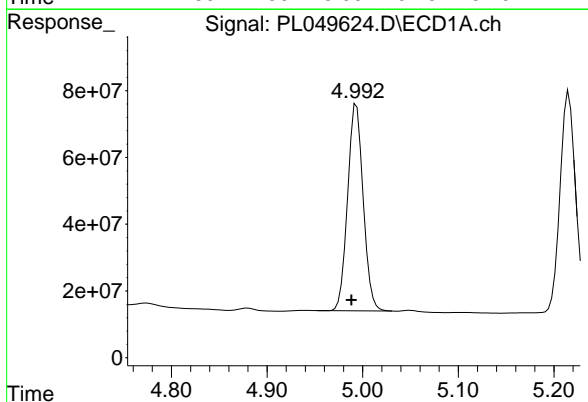
#7 delta-BHC
 R.T.: 4.481 min
 Delta R.T.: 0.006 min
 Response: 681621471
 Conc: 42.18 ng/ml

Instrument :
 ECD_L
ClientSampled :
 PB120723BS

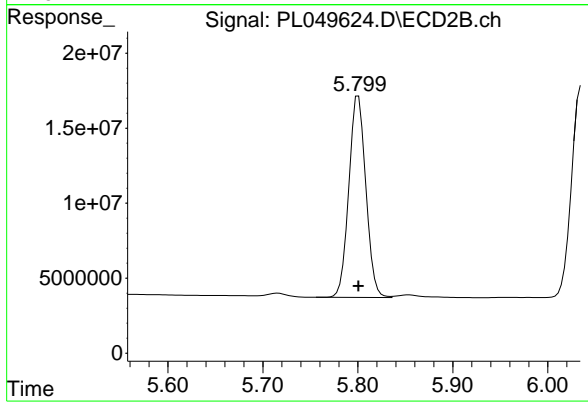
Manual Integrations
APPROVED
 Ankita
 6/20/2019 10:01:44 AM



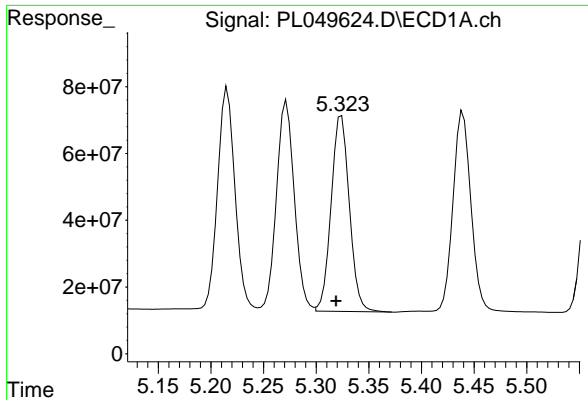
#7 delta-BHC
 R.T.: 4.998 min
 Delta R.T.: 0.000 min
 Response: 153435642
 Conc: 50.02 ng/ml



#8 Heptachlor epoxide
 R.T.: 4.994 min
 Delta R.T.: 0.006 min
 Response: 705809888
 Conc: 47.59 ng/ml



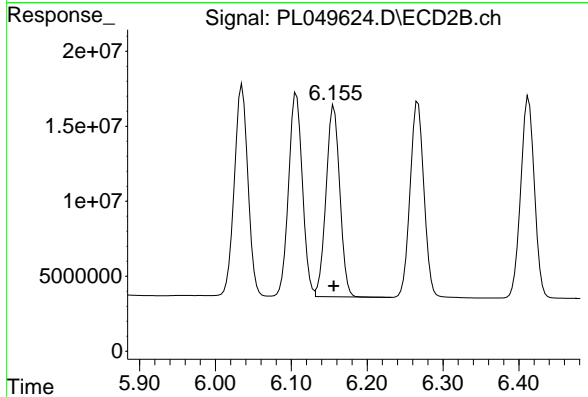
#8 Heptachlor epoxide
 R.T.: 5.801 min
 Delta R.T.: 0.000 min
 Response: 167091757
 Conc: 51.12 ng/ml



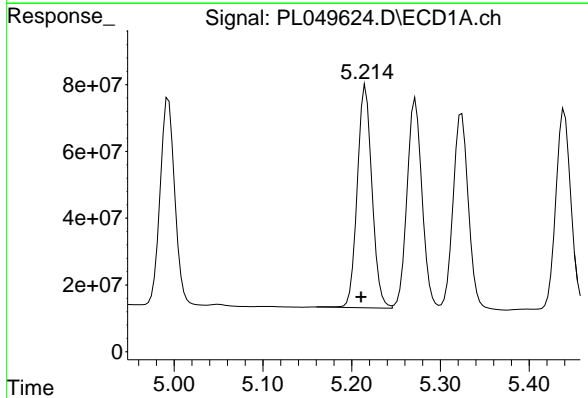
#9 Endosulfan I
 R.T.: 5.324 min
 Delta R.T.: 0.005 min
 Response: 705677626
 Conc: 48.22 ng/ml

Instrument :
 ECD_L
ClientSampled :
 PB120723BS

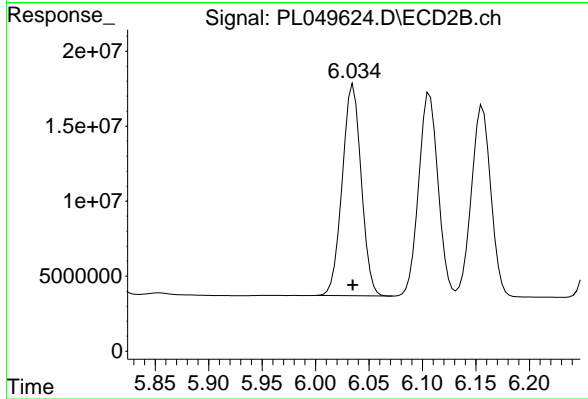
Manual Integrations
APPROVED
 Ankita
 6/20/2019 10:01:44 AM



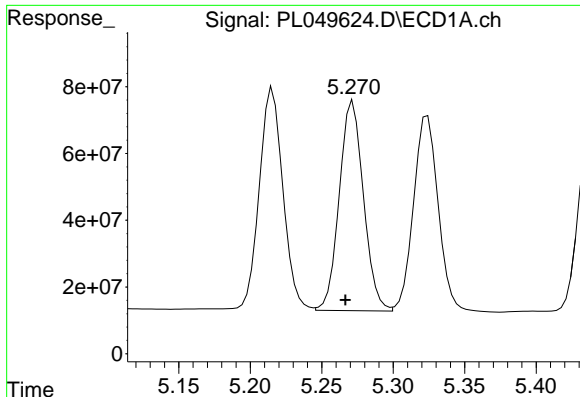
#9 Endosulfan I
 R.T.: 6.156 min
 Delta R.T.: 0.000 min
 Response: 160874363
 Conc: 49.95 ng/ml



#10 gamma-Chlordane
 R.T.: 5.216 min
 Delta R.T.: 0.005 min
 Response: 765680164
 Conc: 47.96 ng/ml



#10 gamma-Chlordane
 R.T.: 6.035 min
 Delta R.T.: 0.000 min
 Response: 174439376
 Conc: 50.43 ng/ml

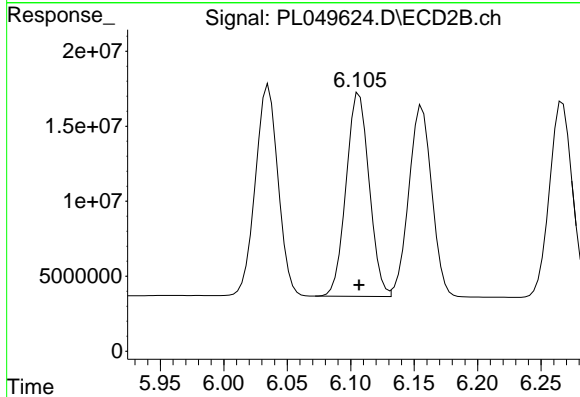


#11 alpha-Chlordane

R.T.: 5.272 min
 Delta R.T.: 0.005 min
 Response: 740342600
 Conc: 47.39 ng/ml

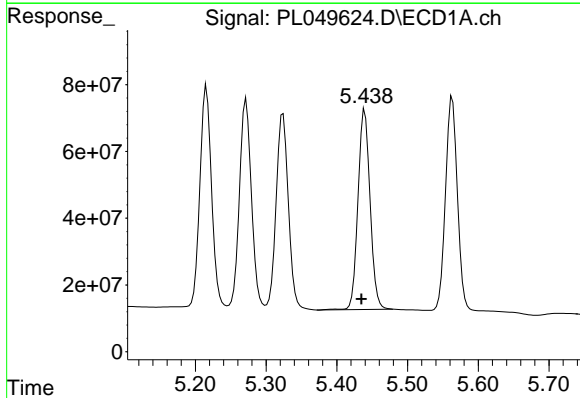
Instrument :
 ECD_L
ClientSampled :
 PB120723BS

Manual Integrations
APPROVED
 Ankita
 6/20/2019 10:01:44 AM



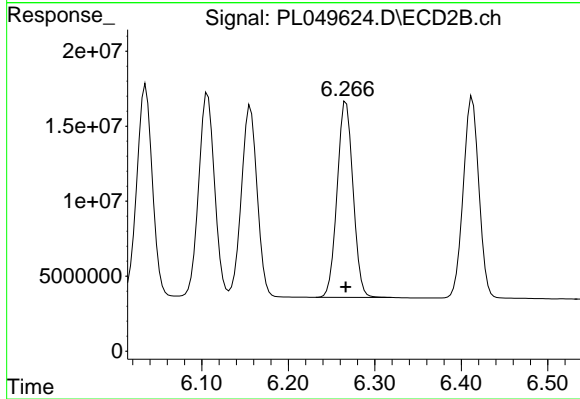
#11 alpha-Chlordane

R.T.: 6.107 min
 Delta R.T.: 0.000 min
 Response: 171432085
 Conc: 49.42 ng/ml



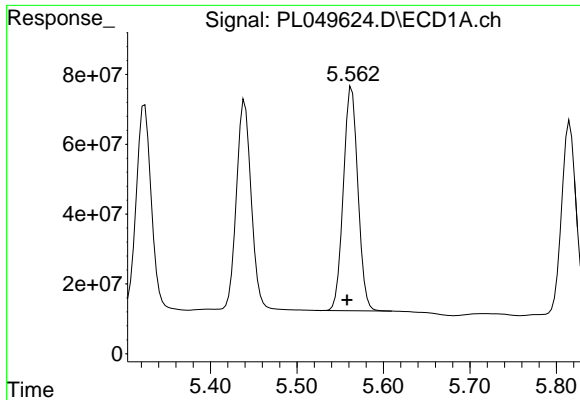
#12 4,4'-DDE

R.T.: 5.440 min
 Delta R.T.: 0.005 min
 Response: 712178488
 Conc: 45.53 ng/ml



#12 4,4'-DDE

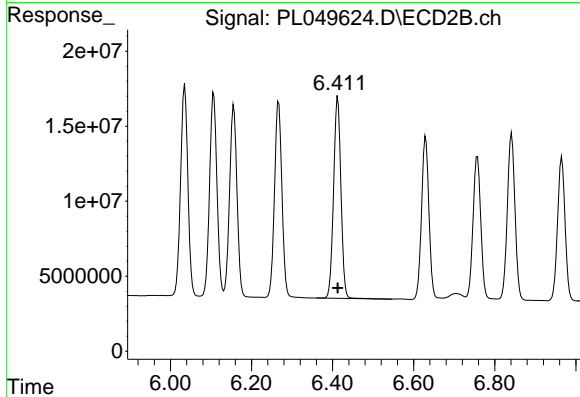
R.T.: 6.267 min
 Delta R.T.: 0.000 min
 Response: 165804881
 Conc: 50.51 ng/ml



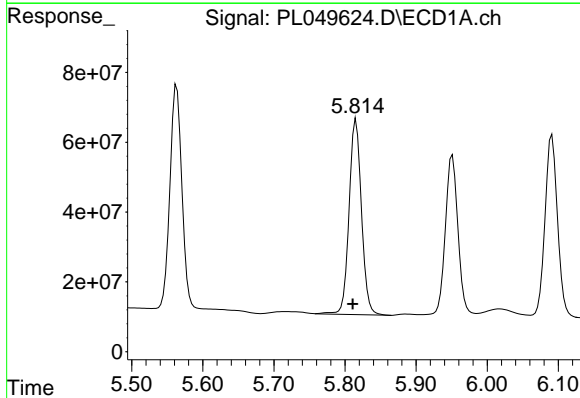
#13 Dieldrin
 R.T.: 5.563 min
 Delta R.T.: 0.005 min
 Response: 744632958
 Conc: 48.70 ng/ml

Instrument :
 ECD_L
ClientSampled :
 PB120723BS

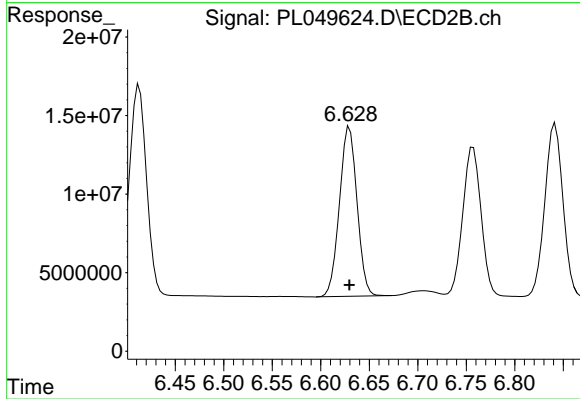
Manual Integrations
APPROVED
 Ankita
 6/20/2019 10:01:44 AM



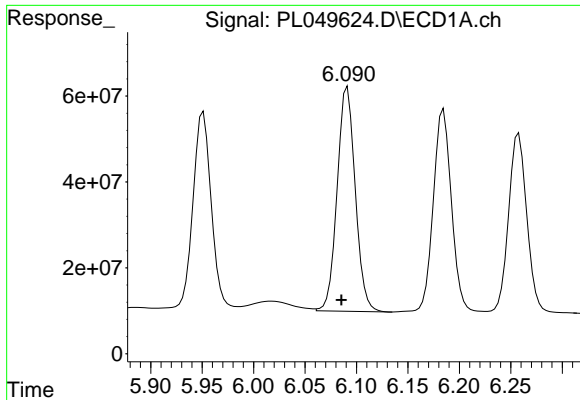
#13 Dieldrin
 R.T.: 6.413 min
 Delta R.T.: 0.000 min
 Response: 169365713
 Conc: 50.50 ng/ml



#14 Endrin
 R.T.: 5.816 min
 Delta R.T.: 0.005 min
 Response: 680475234
 Conc: 47.18 ng/ml



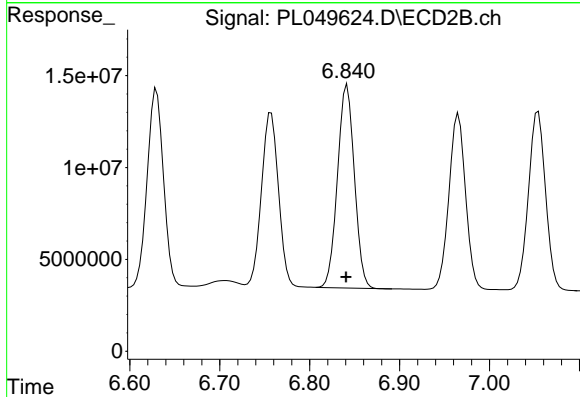
#14 Endrin
 R.T.: 6.630 min
 Delta R.T.: 0.000 min
 Response: 135942592
 Conc: 45.55 ng/ml



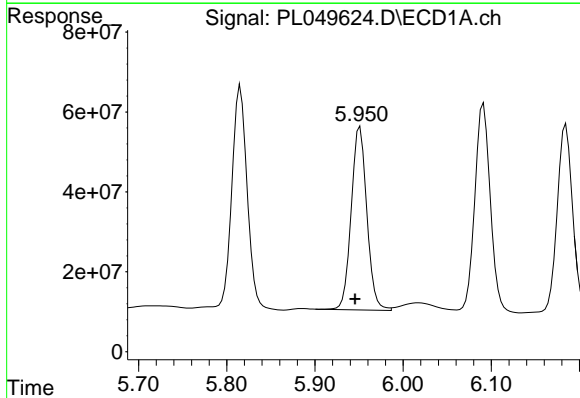
#15 Endosulfan II
 R.T.: 6.091 min
 Delta R.T.: 0.006 min
 Response: 639843760
 Conc: 48.45 ng/ml

Instrument :
 ECD_L
ClientSampled :
 PB120723BS

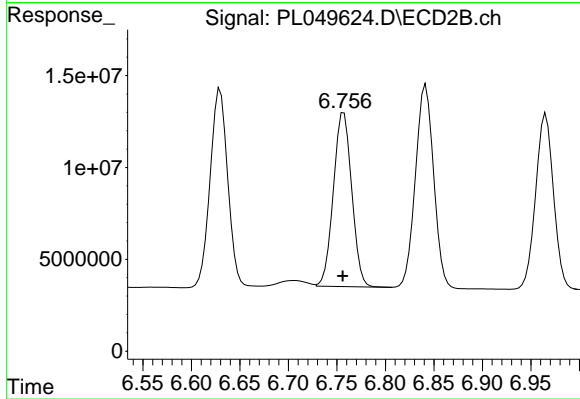
Manual Integrations
APPROVED
 Ankita
 6/20/2019 10:01:44 AM



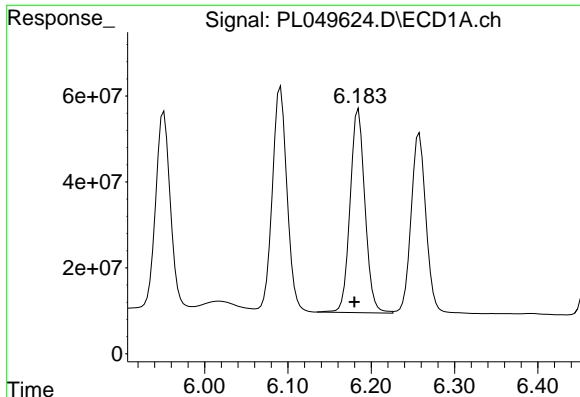
#15 Endosulfan II
 R.T.: 6.842 min
 Delta R.T.: 0.001 min
 Response: 144232481
 Conc: 47.55 ng/ml



#16 4,4'-DDD
 R.T.: 5.951 min
 Delta R.T.: 0.006 min
 Response: 565801280
 Conc: 47.54 ng/ml



#16 4,4'-DDD
 R.T.: 6.757 min
 Delta R.T.: 0.000 min
 Response: 124480544
 Conc: 47.33 ng/ml



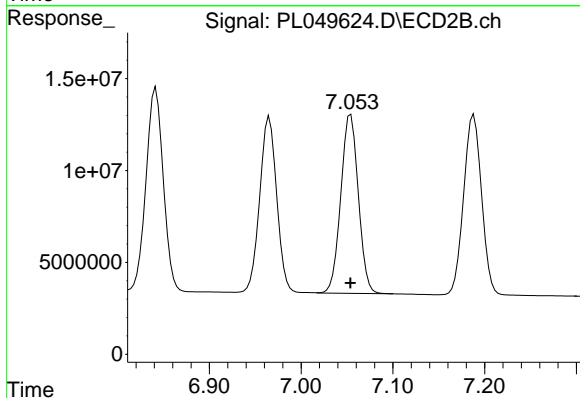
#17 4,4'-DDT

R.T.: 6.185 min
 Delta R.T.: 0.005 min
 Response: 585737989
 Conc: 47.57 ng/ml

Instrument :
 ECD_L
 ClientSampled :
 PB120723BS

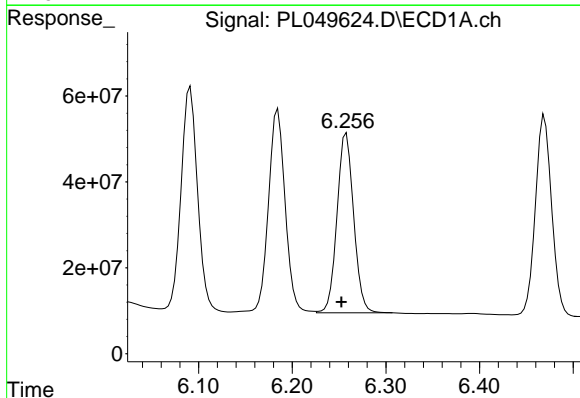
Manual Integrations
 APPROVED

Ankita
 6/20/2019 10:01:44 AM



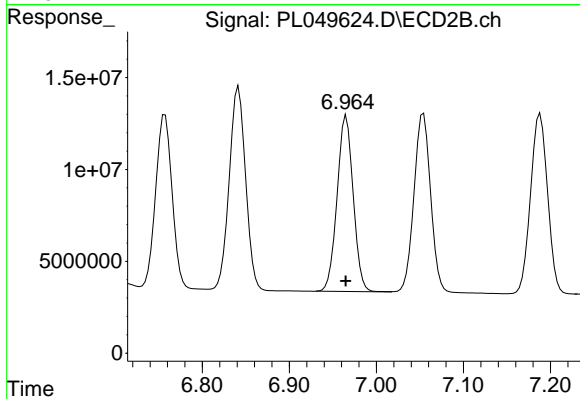
#17 4,4'-DDT

R.T.: 7.054 min
 Delta R.T.: 0.000 min
 Response: 129159362
 Conc: 46.07 ng/ml



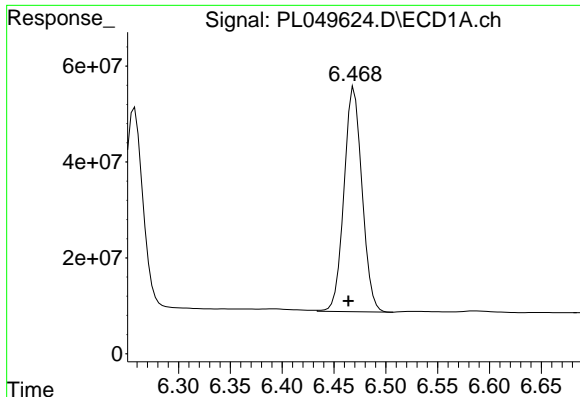
#18 Endrin aldehyde

R.T.: 6.256 min
 Delta R.T.: 0.004 min
 Response: 517056505
 Conc: 47.25 ng/ml m



#18 Endrin aldehyde

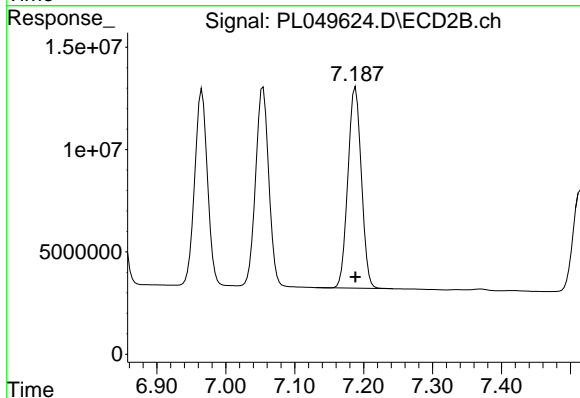
R.T.: 6.966 min
 Delta R.T.: 0.000 min
 Response: 123281780
 Conc: 47.80 ng/ml



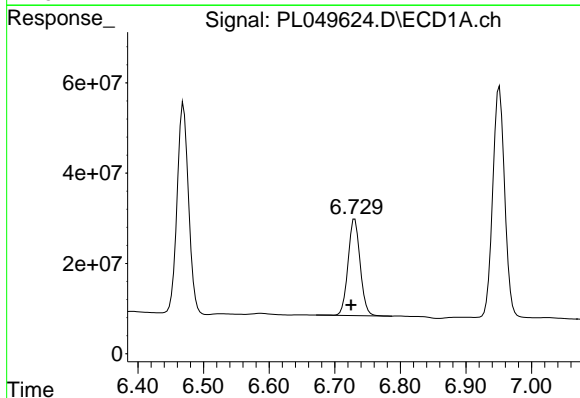
#19 Endosulfan Sulfate
 R.T.: 6.469 min
 Delta R.T.: 0.006 min
 Response: 567355760
 Conc: 43.70 ng/ml

Instrument :
 ECD_L
 ClientSampled :
 PB120723BS

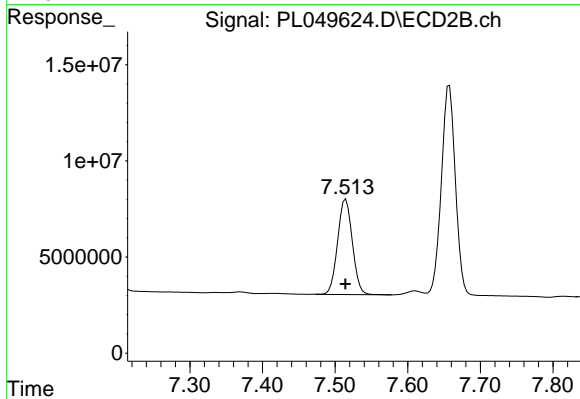
Manual Integrations
 APPROVED
 Ankita
 6/20/2019 10:01:44 AM



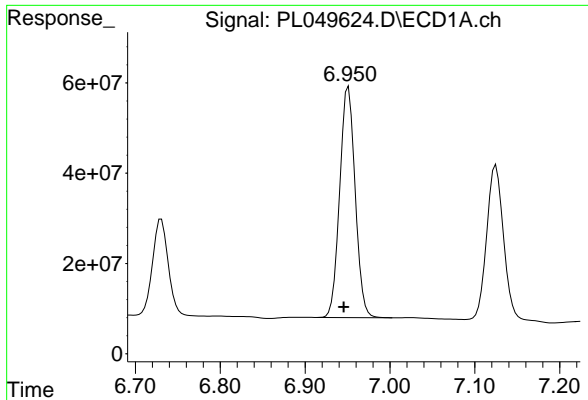
#19 Endosulfan Sulfate
 R.T.: 7.188 min
 Delta R.T.: 0.000 min
 Response: 133506624
 Conc: 43.90 ng/ml



#20 Methoxychlor
 R.T.: 6.731 min
 Delta R.T.: 0.006 min
 Response: 275328744
 Conc: 42.93 ng/ml



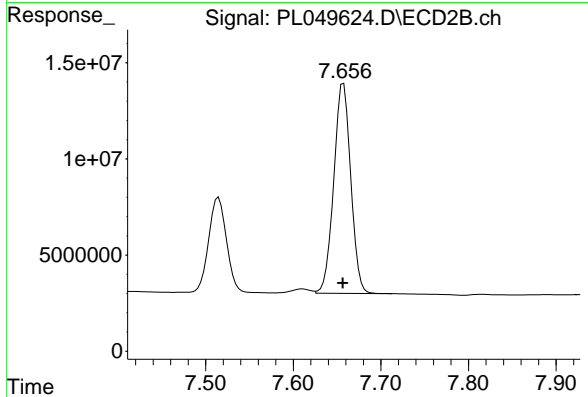
#20 Methoxychlor
 R.T.: 7.515 min
 Delta R.T.: 0.000 min
 Response: 69984253
 Conc: 42.21 ng/ml



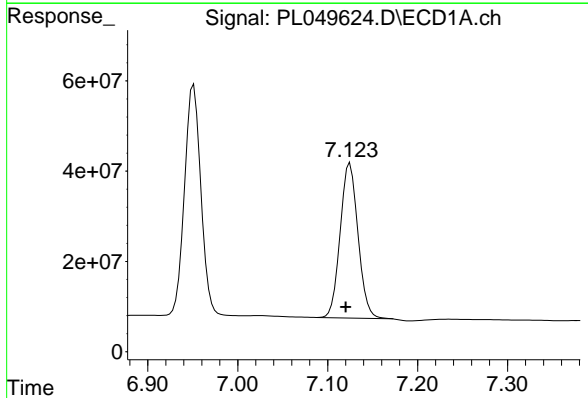
#21 Endrin ketone
 R.T.: 6.951 min
 Delta R.T.: 0.006 min
 Response: 646402432
 Conc: 45.42 ng/ml

Instrument :
 ECD_L
ClientSampled :
 PB120723BS

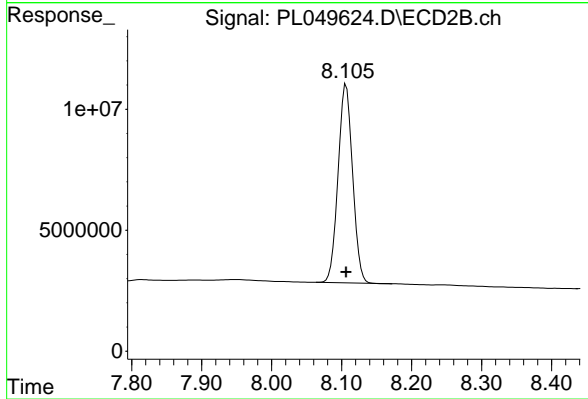
Manual Integrations
APPROVED
 Ankita
 6/20/2019 10:01:44 AM



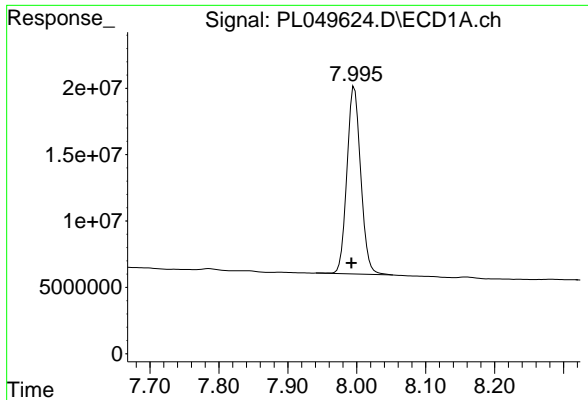
#21 Endrin ketone
 R.T.: 7.657 min
 Delta R.T.: 0.000 min
 Response: 146981574
 Conc: 46.21 ng/ml



#22 Mirex
 R.T.: 7.125 min
 Delta R.T.: 0.005 min
 Response: 471590140
 Conc: 44.76 ng/ml



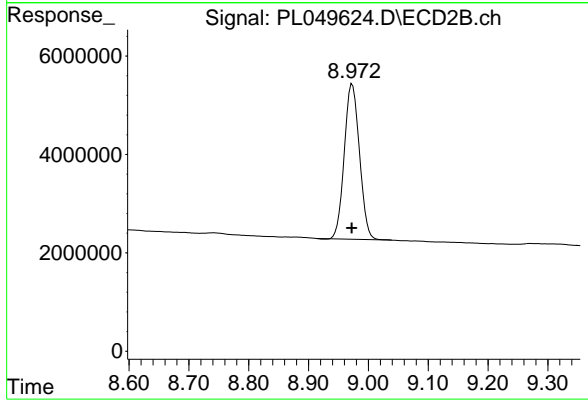
#22 Mirex
 R.T.: 8.106 min
 Delta R.T.: 0.000 min
 Response: 118225840
 Conc: 45.51 ng/ml



#28 Decachlorobiphenyl
R.T.: 7.997 min
Delta R.T.: 0.004 min
Response: 196151252
Conc: 15.43 ng/ml

Instrument :
ECD_L
ClientSampleId :
PB120723BS

Manual Integrations
APPROVED
Ankita
6/20/2019 10:01:44 AM



#28 Decachlorobiphenyl
R.T.: 8.973 min
Delta R.T.: 0.000 min
Response: 55609627
Conc: 16.65 ng/ml