

Data Path : Z:\pestpcbsrv\HPCHEM1\ECD_L\Data\PL061923\
 Data File : PL083542.D
 Signal(s) : Signal #1: ECD1A.ch Signal #2: ECD2B.ch
 Acq On : 19 Jun 2023 14:05
 Operator : AR\AJ
 Sample : PB153489BS
 Misc :
 ALS Vial : 8 Sample Multiplier: 1

Instrument :
 ECD_L
 ClientSampleId :
 PB153489BS

Integration File signal 1: autoint1.e
 Integration File signal 2: autoint2.e
 Quant Time: Jun 20 04:09:33 2023
 Quant Method : Z:\pestpcbsrv\HPCHEM1\ECD_L\methods\PL061723.M
 Quant Title : GC Extractables
 QLast Update : Sat Jun 17 12:34:26 2023
 Response via : Initial Calibration
 Integrator: ChemStation

Volume Inj. : 1 µl
 Signal #1 Phase : ZB-MR2 Signal #2 Phase: ZB-MR1
 Signal #1 Info : 30M x 0.32mm x0.2 Signal #2 Info : 30M x 0.32mm x0.5µm

Compound	RT#1	RT#2	Resp#1	Resp#2	ng/ml	ng/ml
System Monitoring Compounds						
1) SA Tetrachlo...	3.459	2.753	47196132	49065263	21.353	21.064
28) SA Decachlor...	8.998	7.965	49016349	59275173	25.723	24.134
Target Compounds						
2) A alpha-BHC	3.916	3.263	140.1E6	149.2E6	44.995	44.211
3) MA gamma-BHC...	4.251	3.597	128.9E6	142.1E6	45.208	44.249
4) MA Heptachlor	4.842	3.944	129.0E6	139.7E6	46.663	45.142
5) MB Aldrin	5.183	4.227	118.1E6	133.0E6	45.460	44.173
6) B beta-BHC	4.449	3.899	57329756	64076113	44.312	42.935
7) B delta-BHC	4.695	4.131	123.2E6	140.8E6	44.708	43.670
8) B Heptachlo...	5.613	4.737	110.3E6	98609187	43.465	34.353
9) A Endosulfan I	5.998	5.110	102.7E6	119.4E6	46.098	44.319
10) B gamma-Chl...	5.869	4.991	110.0E6	129.7E6	45.742	43.850
11) B alpha-Chl...	5.950	5.056	109.4E6	129.2E6	46.168	43.691
12) B 4,4'-DDE	6.128	5.253	94925773	114.1E6	47.023	44.647
13) MA Dieldrin	6.274	5.378	104.0E6	124.4E6	46.333	44.356
14) MA Endrin	6.503	5.654	84836319	103.4E6	48.070	44.814
15) B Endosulfa...	6.723	5.951	92336416	102.9E6	49.471	43.336
16) A 4,4'-DDD	6.646	5.813	91566118	95440783	53.628	43.281
17) MA 4,4'-DDT	6.961	6.066	88316144	107.8E6	52.455	51.619
18) B Endrin al...	6.854	6.133	63175116	91103391	42.617	48.203
19) B Endosulfa...	7.089	6.359	92480609	114.4E6	48.156	47.256
20) A Methoxychlor	7.441	6.651	49698153	60043421	54.790	49.821
21) B Endrin ke...	7.573	6.865	102.8E6	129.9E6	47.957	46.204
22) Mirex	8.048	7.051	89921421	101.6E6	48.178	42.198
24) Chlordane-2	0.000	4.361	0	107475	N.D.	0.894 #
25) Chlordane-3	5.869	4.991	110.0E6	129.7E6	287.982	395.966 #
26) Chlordane-4	5.950	5.056	109.4E6	129.2E6	236.485	383.439 #
27) Chlordane-5	0.000	5.951	0	102.9E6	N.D.	925.246 #

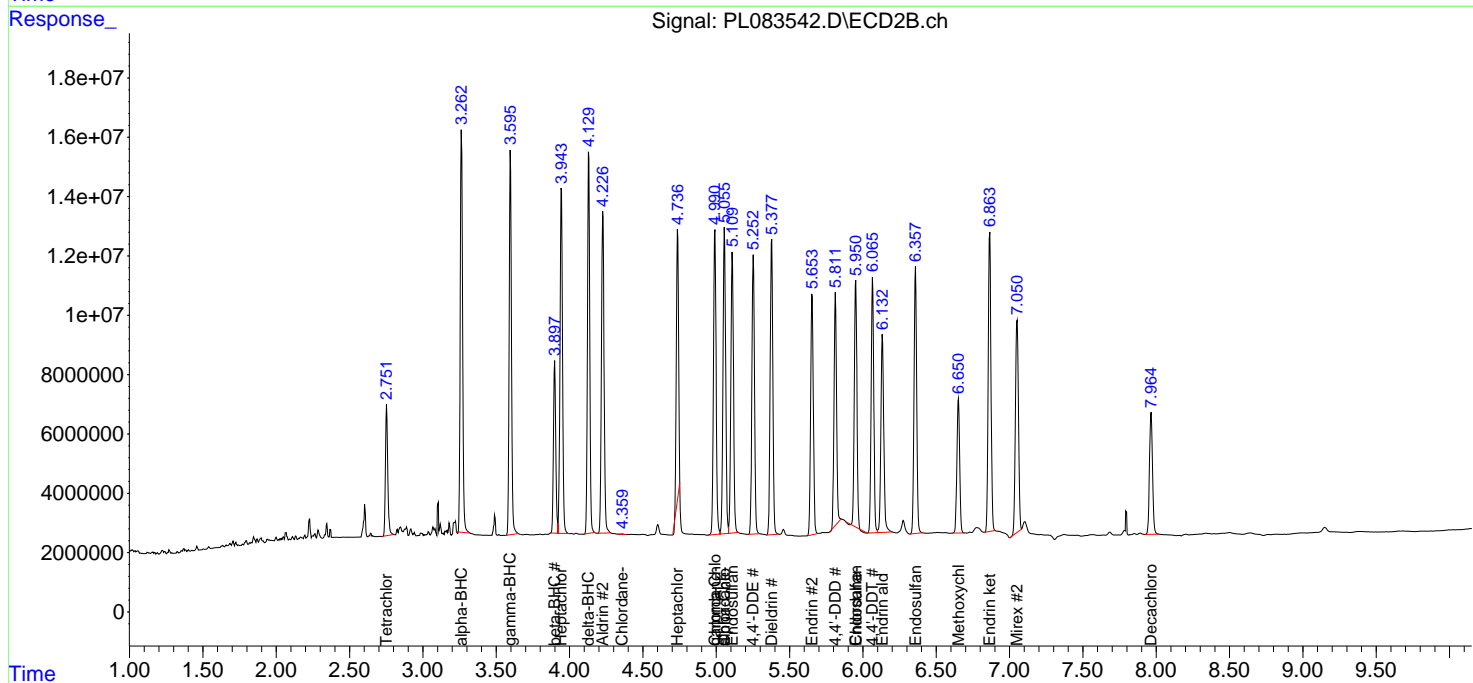
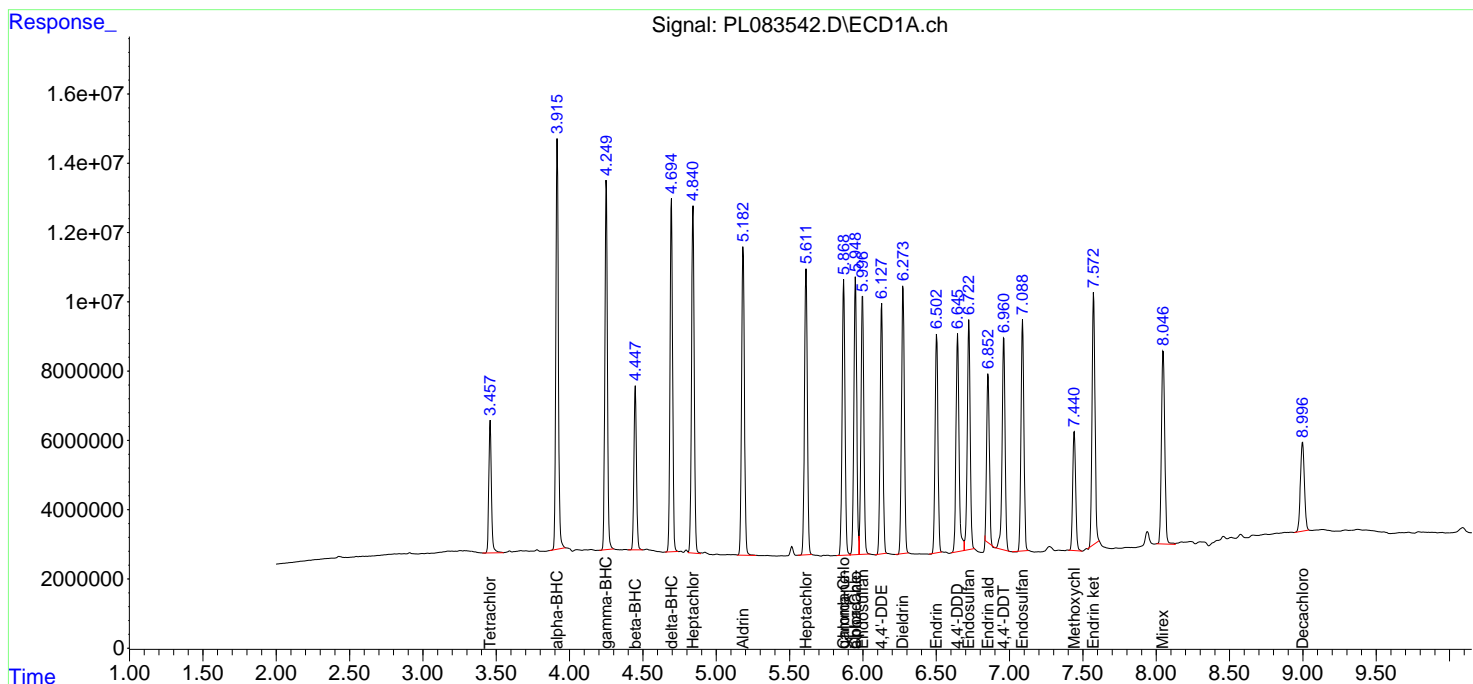
(f)=RT Delta > 1/2 Window (#)=Amounts differ by > 25% (m)=manual int.

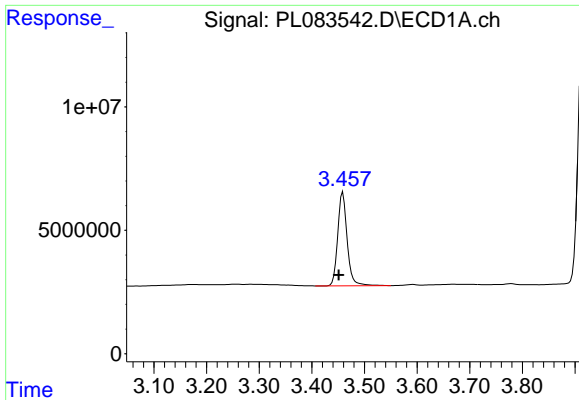
Data Path : Z:\pestpcbsrv\HPCHEM1\ECD_L\Data\PL061923\
 Data File : PL083542.D
 Signal(s) : Signal #1: ECD1A.ch Signal #2: ECD2B.ch
 Acq On : 19 Jun 2023 14:05
 Operator : AR\AJ
 Sample : PB153489BS
 Misc :
 ALS Vial : 8 Sample Multiplier: 1

Instrument :
 ECD_L
 ClientSampleId :
 PB153489BS

Integration File signal 1: autoint1.e
 Integration File signal 2: autoint2.e
 Quant Time: Jun 20 04:09:33 2023
 Quant Method : Z:\pestpcbsrv\HPCHEM1\ECD_L\methods\PL061723.M
 Quant Title : GC Extractables
 QLast Update : Sat Jun 17 12:34:26 2023
 Response via : Initial Calibration
 Integrator: ChemStation

Volume Inj. : 1 µl
 Signal #1 Phase : ZB-MR2 Signal #2 Phase: ZB-MR1
 Signal #1 Info : 30M x 0.32mm x0.2 Signal #2 Info : 30M x 0.32mm x0.5µm

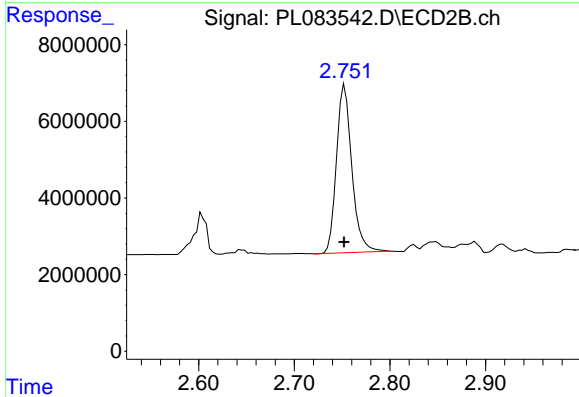




#1 Tetrachloro-m-xylene

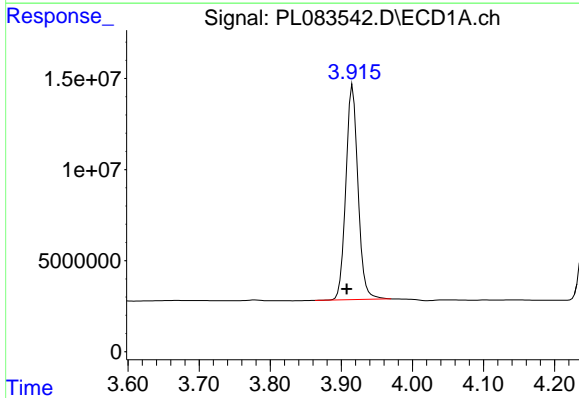
R.T.: 3.459 min
 Delta R.T.: 0.008 min
 Response: 47196132
 Conc: 21.35 ng/ml

Instrument :
 ECD_L
 ClientSampleId :
 PB153489BS



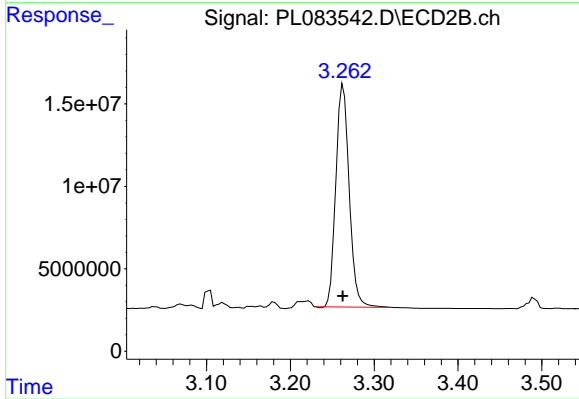
#1 Tetrachloro-m-xylene

R.T.: 2.753 min
 Delta R.T.: 0.000 min
 Response: 49065263
 Conc: 21.06 ng/ml



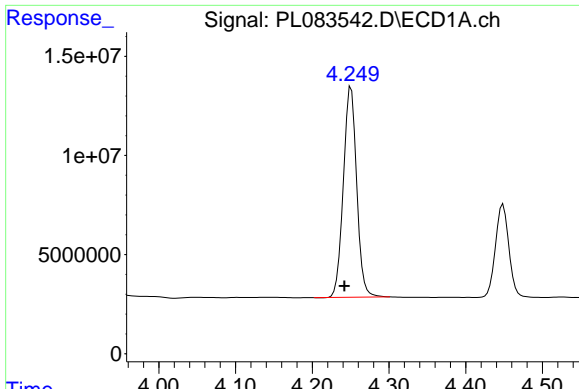
#2 alpha-BHC

R.T.: 3.916 min
 Delta R.T.: 0.008 min
 Response: 140089098
 Conc: 45.00 ng/ml



#2 alpha-BHC

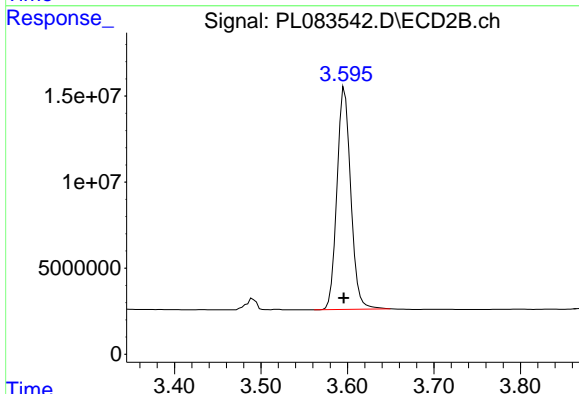
R.T.: 3.263 min
 Delta R.T.: 0.000 min
 Response: 149237595
 Conc: 44.21 ng/ml



#3 gamma-BHC (Lindane)

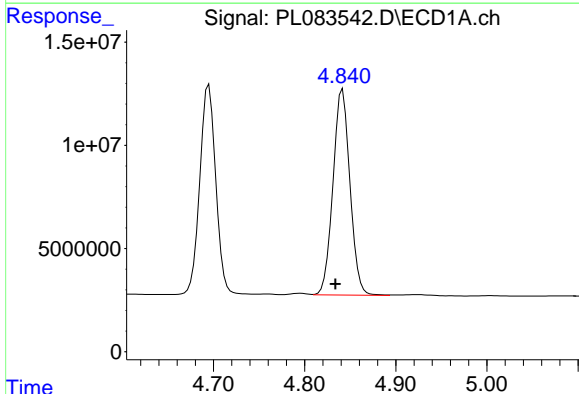
R.T.: 4.251 min
 Delta R.T.: 0.009 min
 Response: 128875630
 Conc: 45.21 ng/ml

Instrument :
 ECD_L
 ClientSampleId :
 PB153489BS



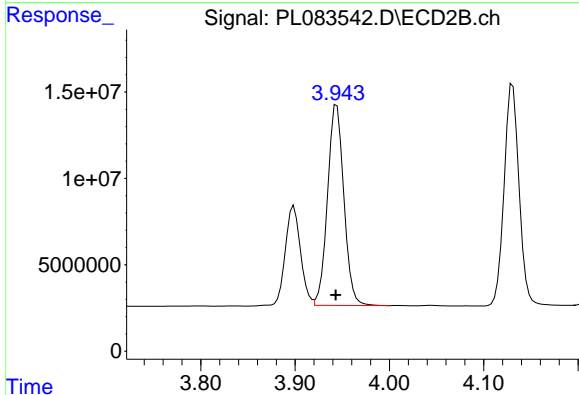
#3 gamma-BHC (Lindane)

R.T.: 3.597 min
 Delta R.T.: 0.001 min
 Response: 142067677
 Conc: 44.25 ng/ml



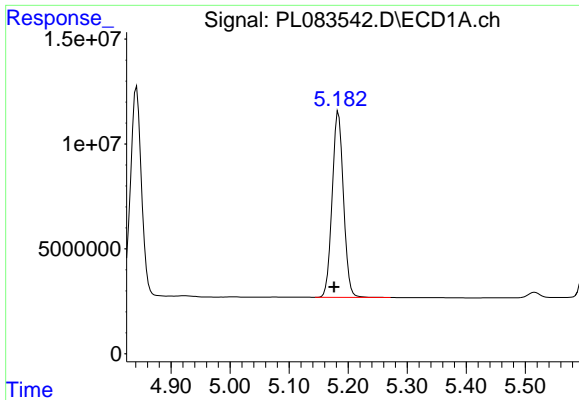
#4 Heptachlor

R.T.: 4.842 min
 Delta R.T.: 0.008 min
 Response: 129018058
 Conc: 46.66 ng/ml



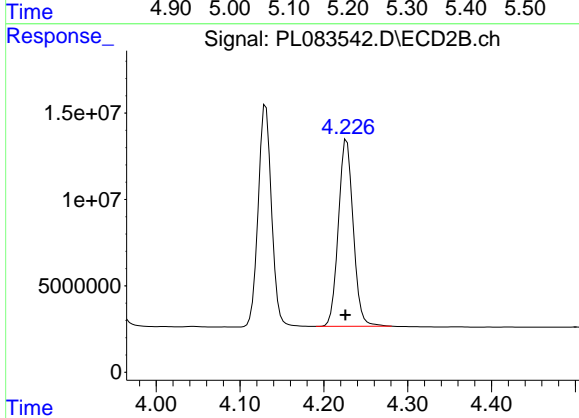
#4 Heptachlor

R.T.: 3.944 min
 Delta R.T.: 0.001 min
 Response: 139743323
 Conc: 45.14 ng/ml

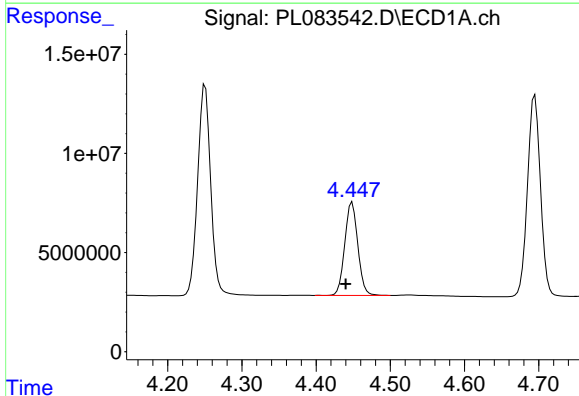


#5 Aldrin
 R.T.: 5.183 min
 Delta R.T.: 0.008 min
 Response: 118144994
 Conc: 45.46 ng/ml

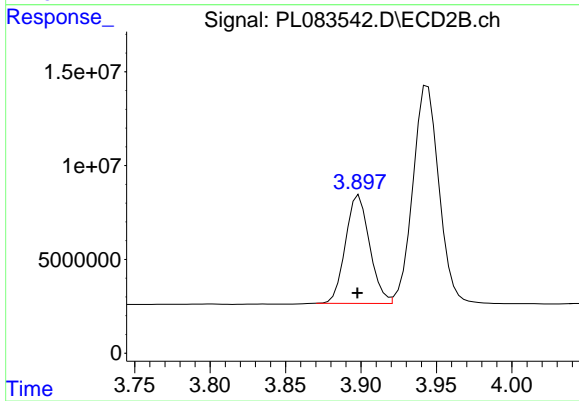
Instrument :
 ECD_L
 ClientSampleId :
 PB153489BS



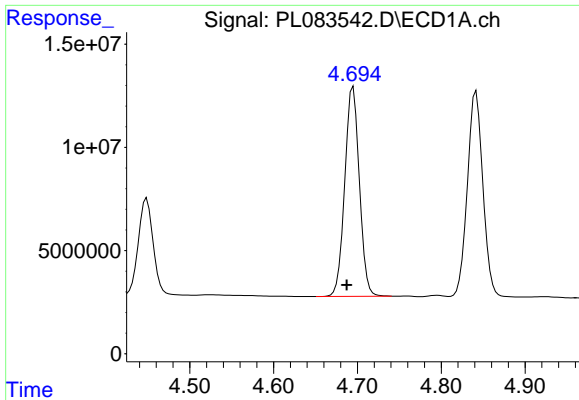
#5 Aldrin
 R.T.: 4.227 min
 Delta R.T.: 0.001 min
 Response: 132986924
 Conc: 44.17 ng/ml



#6 beta-BHC
 R.T.: 4.449 min
 Delta R.T.: 0.009 min
 Response: 57329756
 Conc: 44.31 ng/ml



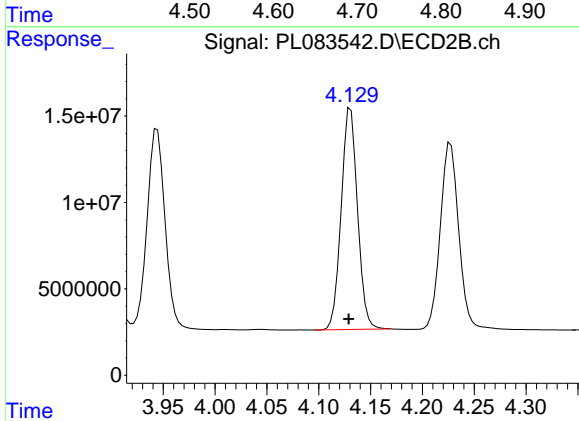
#6 beta-BHC
 R.T.: 3.899 min
 Delta R.T.: 0.000 min
 Response: 64076113
 Conc: 42.94 ng/ml



#7 delta-BHC

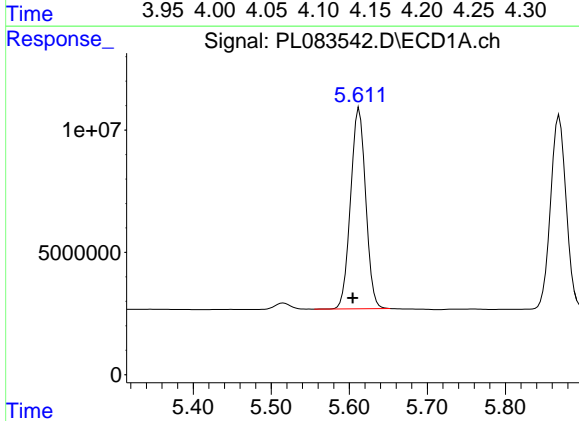
R.T.: 4.695 min
 Delta R.T.: 0.008 min
 Response: 123228097
 Conc: 44.71 ng/ml

Instrument :
 ECD_L
 ClientSampleId :
 PB153489BS



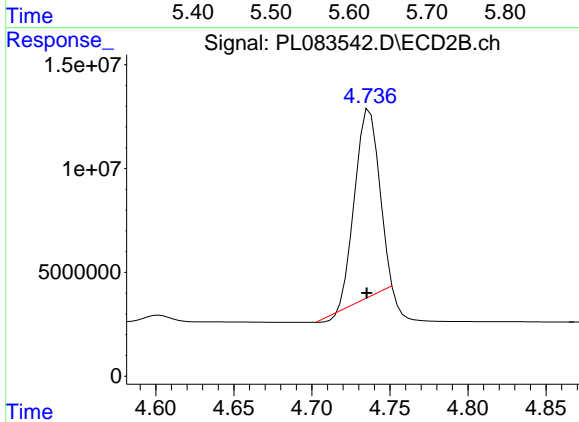
#7 delta-BHC

R.T.: 4.131 min
 Delta R.T.: 0.002 min
 Response: 140759003
 Conc: 43.67 ng/ml



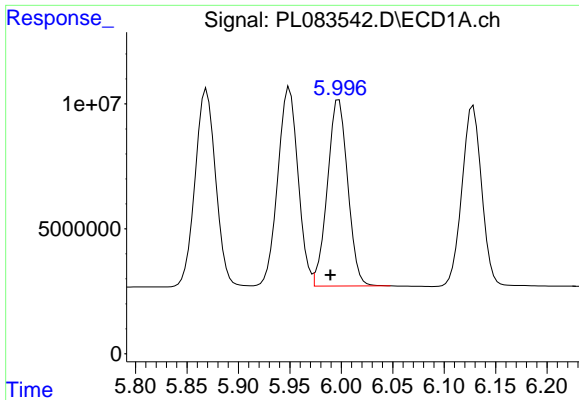
#8 Heptachlor epoxide

R.T.: 5.613 min
 Delta R.T.: 0.008 min
 Response: 110330549
 Conc: 43.47 ng/ml



#8 Heptachlor epoxide

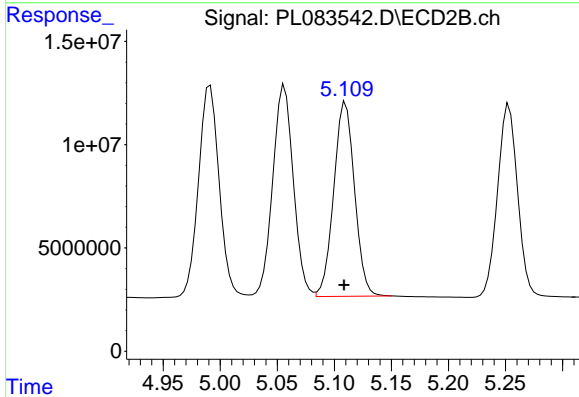
R.T.: 4.737 min
 Delta R.T.: 0.002 min
 Response: 98609187
 Conc: 34.35 ng/ml



#9 Endosulfan I

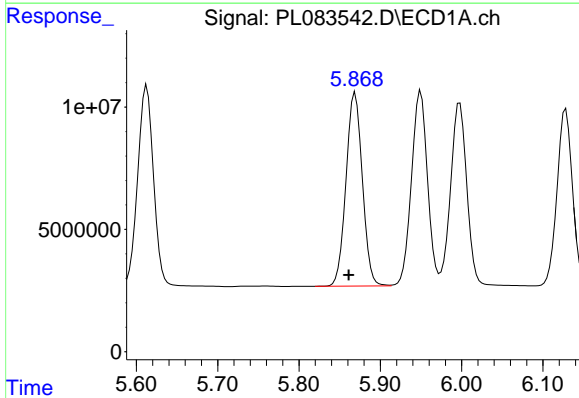
R.T.: 5.998 min
 Delta R.T.: 0.008 min
 Response: 102718089
 Conc: 46.10 ng/ml

Instrument :
 ECD_L
 ClientSampleId :
 PB153489BS



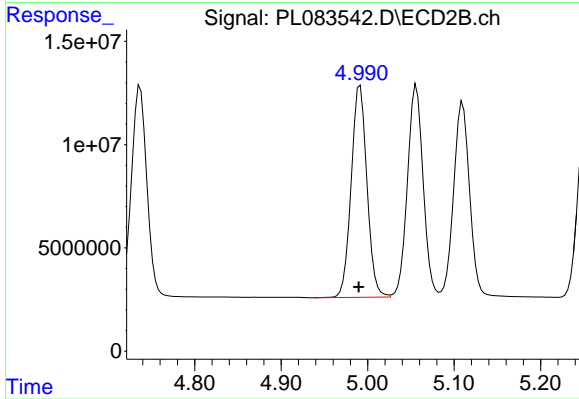
#9 Endosulfan I

R.T.: 5.110 min
 Delta R.T.: 0.002 min
 Response: 119443776
 Conc: 44.32 ng/ml



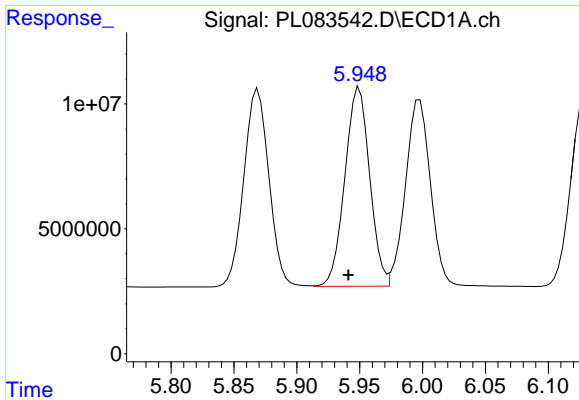
#10 gamma-Chlordane

R.T.: 5.869 min
 Delta R.T.: 0.008 min
 Response: 110039137
 Conc: 45.74 ng/ml



#10 gamma-Chlordane

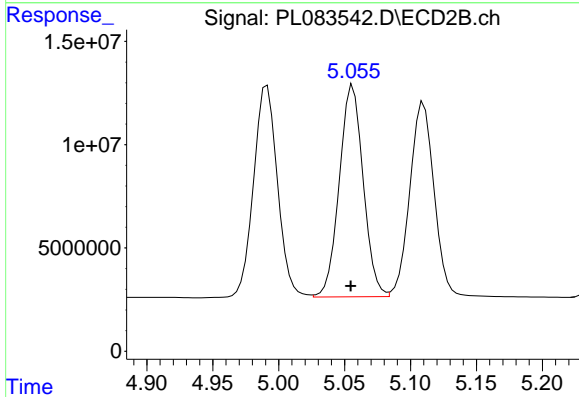
R.T.: 4.991 min
 Delta R.T.: 0.002 min
 Response: 129740297
 Conc: 43.85 ng/ml



#11 alpha-Chlordane

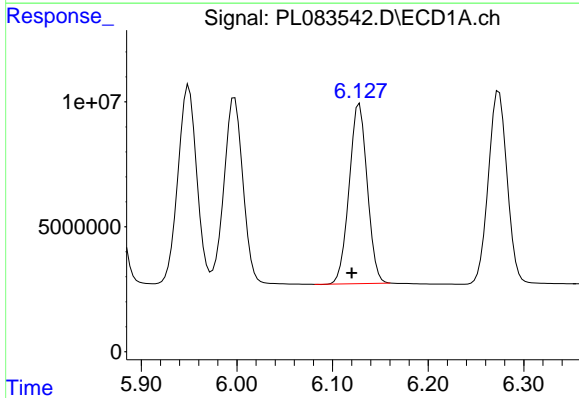
R.T.: 5.950 min
 Delta R.T.: 0.009 min
 Response: 109356315
 Conc: 46.17 ng/ml

Instrument :
 ECD_L
 ClientSampleId :
 PB153489BS



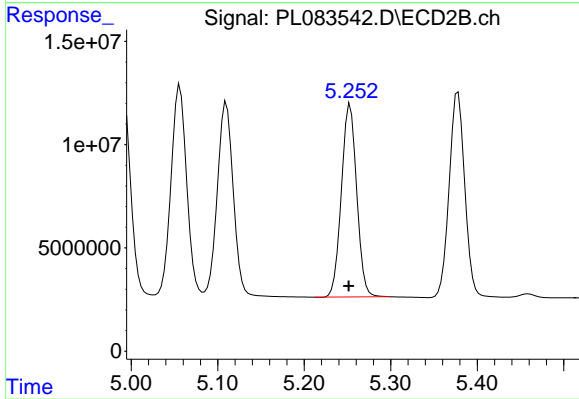
#11 alpha-Chlordane

R.T.: 5.056 min
 Delta R.T.: 0.002 min
 Response: 129249364
 Conc: 43.69 ng/ml



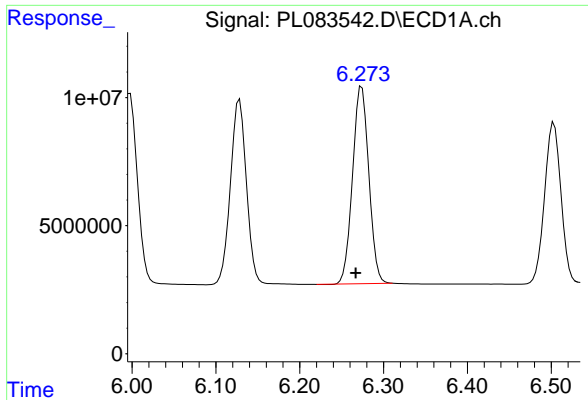
#12 4,4'-DDE

R.T.: 6.128 min
 Delta R.T.: 0.008 min
 Response: 94925773
 Conc: 47.02 ng/ml



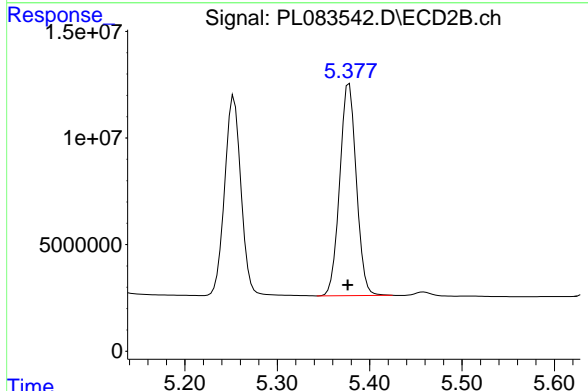
#12 4,4'-DDE

R.T.: 5.253 min
 Delta R.T.: 0.002 min
 Response: 114055695
 Conc: 44.65 ng/ml

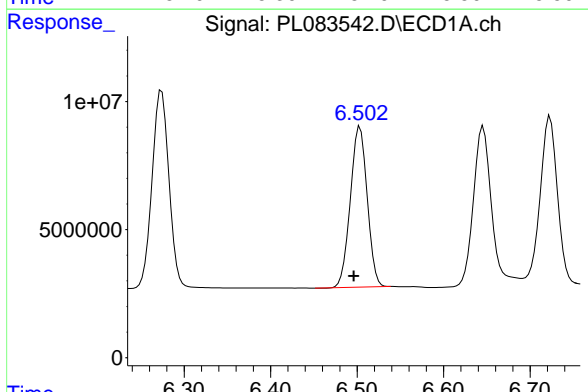


#13 Dieldrin
 R.T.: 6.274 min
 Delta R.T.: 0.007 min
 Response: 104038228
 Conc: 46.33 ng/ml

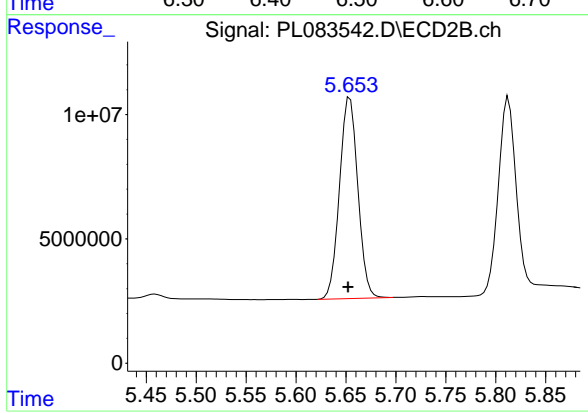
Instrument :
 ECD_L
 ClientSampleId :
 PB153489BS



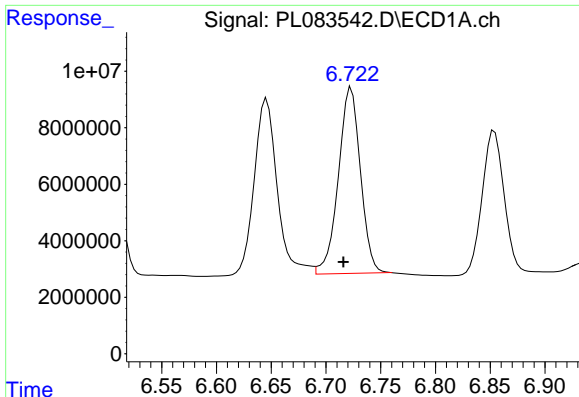
#13 Dieldrin
 R.T.: 5.378 min
 Delta R.T.: 0.002 min
 Response: 124384673
 Conc: 44.36 ng/ml



#14 Endrin
 R.T.: 6.503 min
 Delta R.T.: 0.007 min
 Response: 84836319
 Conc: 48.07 ng/ml



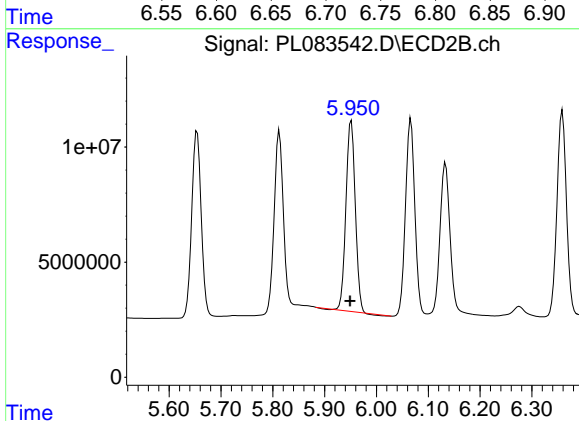
#14 Endrin
 R.T.: 5.654 min
 Delta R.T.: 0.002 min
 Response: 103436292
 Conc: 44.81 ng/ml



#15 Endosulfan II

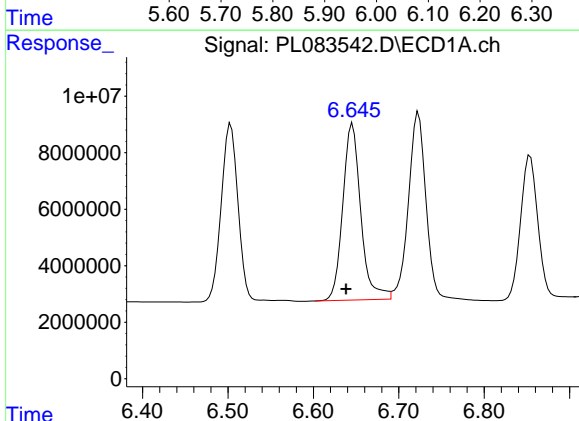
R.T.: 6.723 min
 Delta R.T.: 0.007 min
 Response: 92336416
 Conc: 49.47 ng/ml

Instrument :
 ECD_L
 ClientSampleId :
 PB153489BS



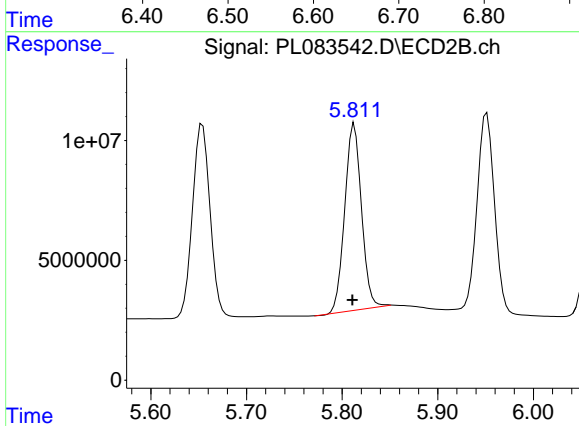
#15 Endosulfan II

R.T.: 5.951 min
 Delta R.T.: 0.002 min
 Response: 102866609
 Conc: 43.34 ng/ml



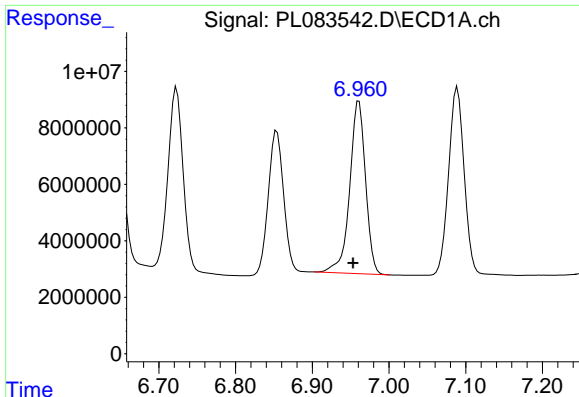
#16 4,4'-DDD

R.T.: 6.646 min
 Delta R.T.: 0.008 min
 Response: 91566118
 Conc: 53.63 ng/ml



#16 4,4'-DDD

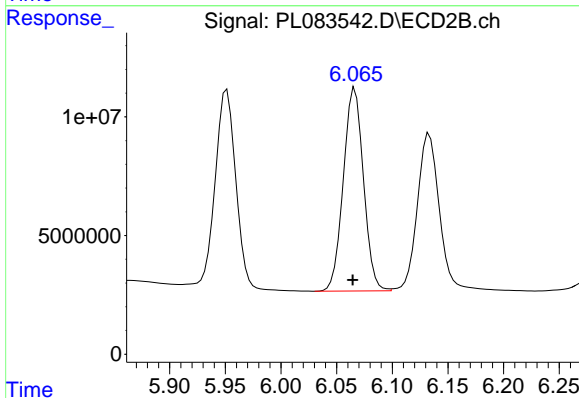
R.T.: 5.813 min
 Delta R.T.: 0.002 min
 Response: 95440783
 Conc: 43.28 ng/ml



#17 4,4'-DDT

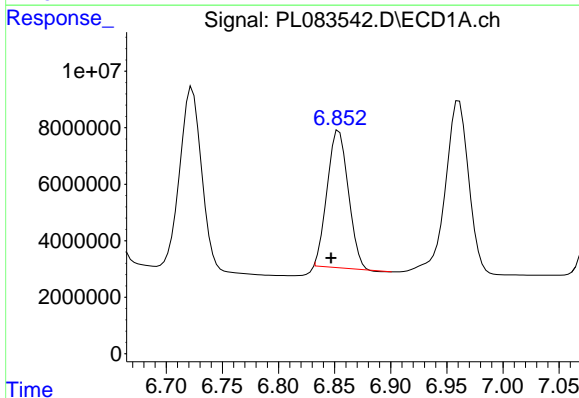
R.T.: 6.961 min
 Delta R.T.: 0.008 min
 Response: 88316144
 Conc: 52.45 ng/ml

Instrument :
 ECD_L
 ClientSampleId :
 PB153489BS



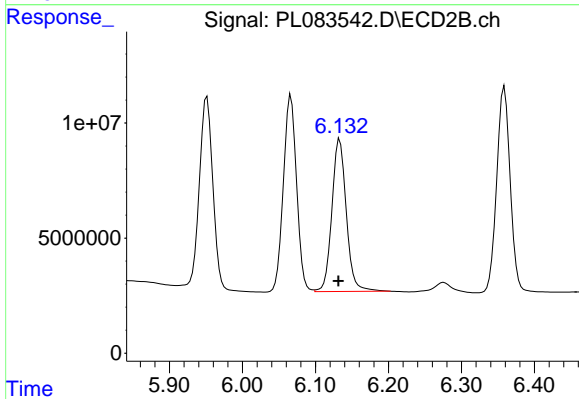
#17 4,4'-DDT

R.T.: 6.066 min
 Delta R.T.: 0.002 min
 Response: 107773053
 Conc: 51.62 ng/ml



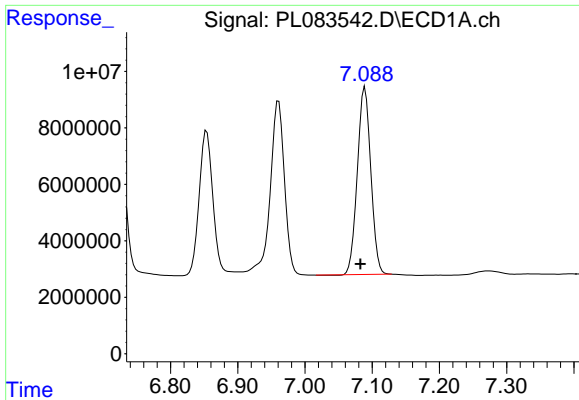
#18 Endrin aldehyde

R.T.: 6.854 min
 Delta R.T.: 0.007 min
 Response: 63175116
 Conc: 42.62 ng/ml



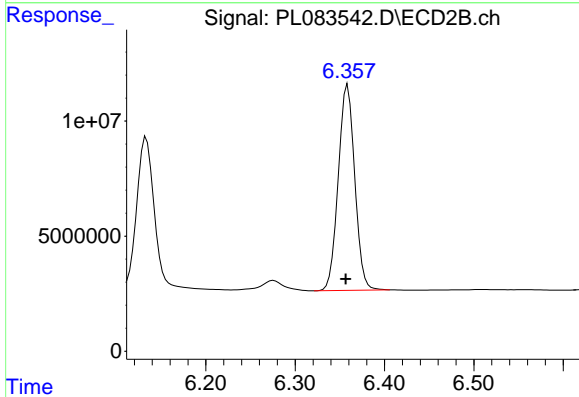
#18 Endrin aldehyde

R.T.: 6.133 min
 Delta R.T.: 0.002 min
 Response: 91103391
 Conc: 48.20 ng/ml

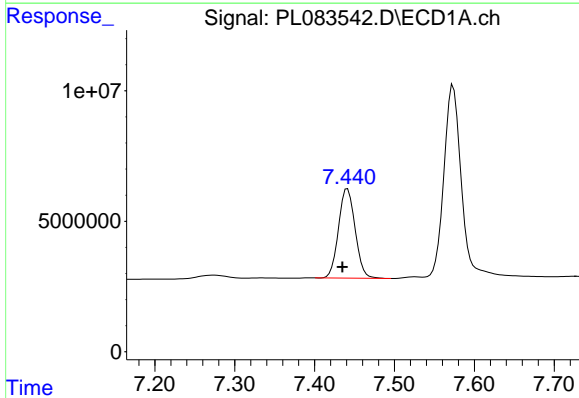


#19 Endosulfan Sulfate
 R.T.: 7.089 min
 Delta R.T.: 0.006 min
 Response: 92480609
 Conc: 48.16 ng/ml

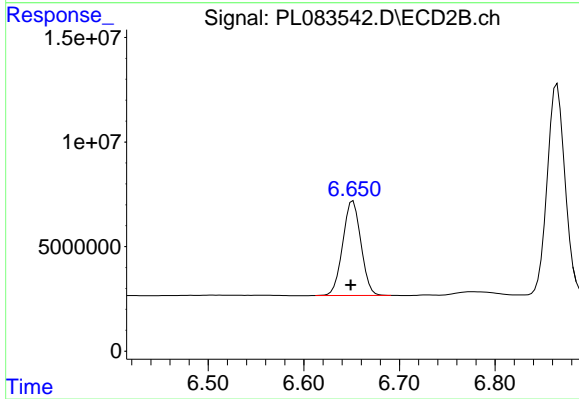
Instrument :
 ECD_L
 ClientSampleId :
 PB153489BS



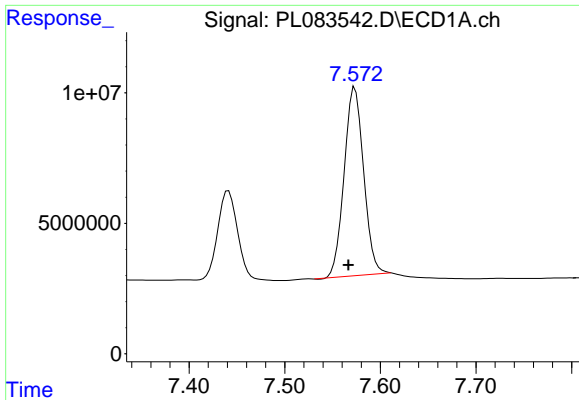
#19 Endosulfan Sulfate
 R.T.: 6.359 min
 Delta R.T.: 0.002 min
 Response: 114438332
 Conc: 47.26 ng/ml



#20 Methoxychlor
 R.T.: 7.441 min
 Delta R.T.: 0.006 min
 Response: 49698153
 Conc: 54.79 ng/ml



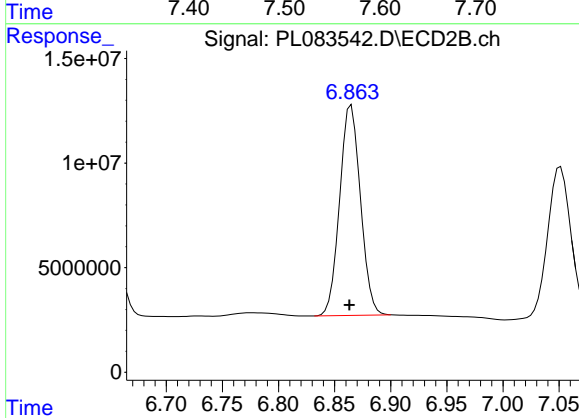
#20 Methoxychlor
 R.T.: 6.651 min
 Delta R.T.: 0.002 min
 Response: 60043421
 Conc: 49.82 ng/ml



#21 Endrin ketone

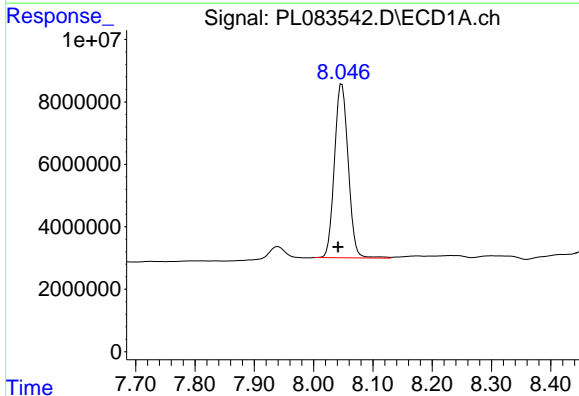
R.T.: 7.573 min
 Delta R.T.: 0.007 min
 Response: 102750905
 Conc: 47.96 ng/ml

Instrument :
 ECD_L
 ClientSampleId :
 PB153489BS



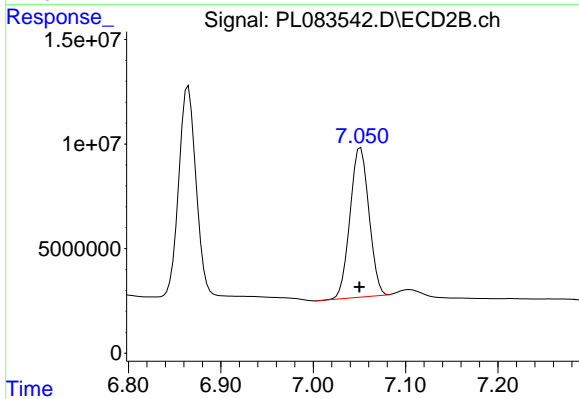
#21 Endrin ketone

R.T.: 6.865 min
 Delta R.T.: 0.002 min
 Response: 129897222
 Conc: 46.20 ng/ml



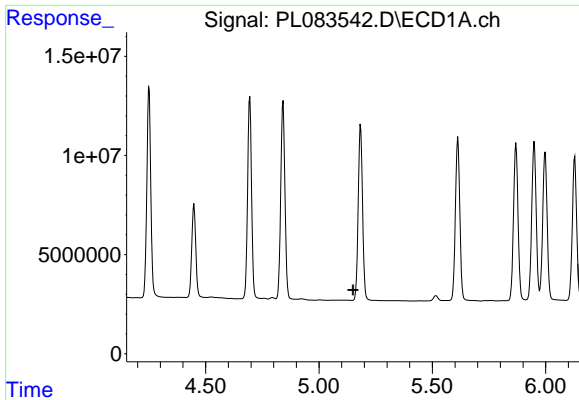
#22 Mirex

R.T.: 8.048 min
 Delta R.T.: 0.006 min
 Response: 89921421
 Conc: 48.18 ng/ml



#22 Mirex

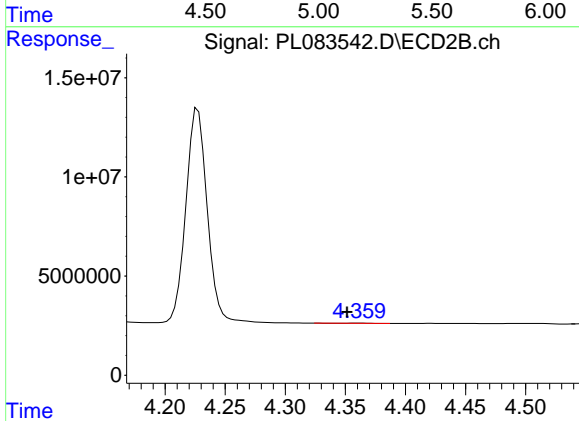
R.T.: 7.051 min
 Delta R.T.: 0.002 min
 Response: 101550741
 Conc: 42.20 ng/ml



#24 Chlordane-2

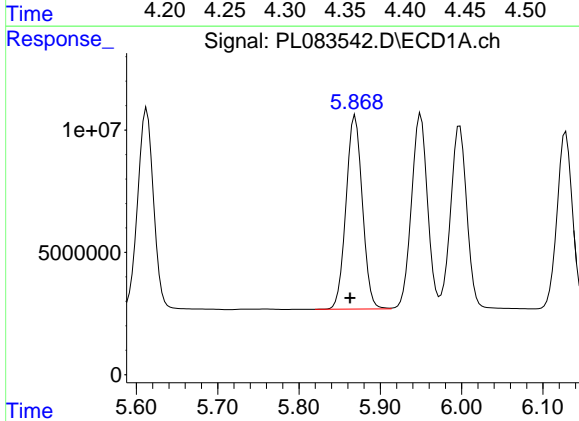
R.T.: 0.000 min
 Exp R.T.: 5.150 min
 Response: 0
 Conc: N.D.

Instrument :
 ECD_L
 ClientSampleId :
 PB153489BS



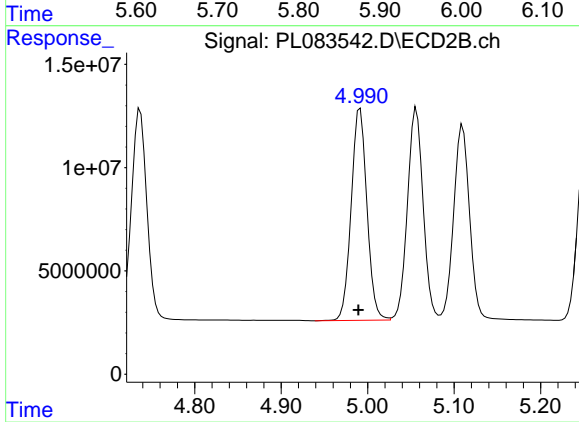
#24 Chlordane-2

R.T.: 4.361 min
 Delta R.T.: 0.010 min
 Response: 107475
 Conc: 0.89 ng/ml



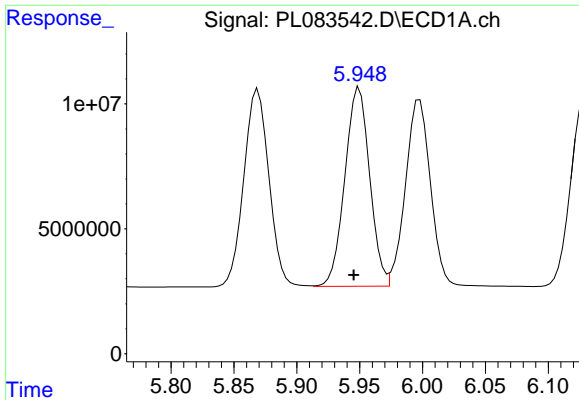
#25 Chlordane-3

R.T.: 5.869 min
 Delta R.T.: 0.006 min
 Response: 110039137
 Conc: 287.98 ng/ml



#25 Chlordane-3

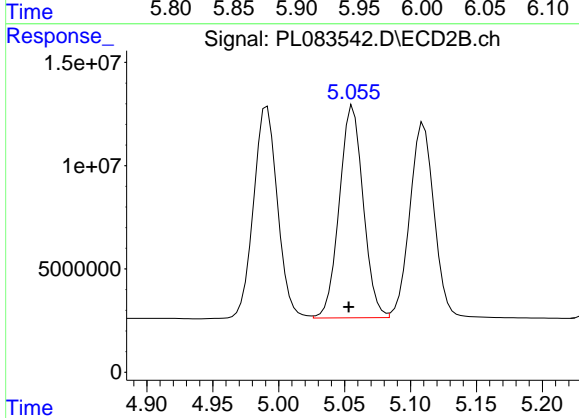
R.T.: 4.991 min
 Delta R.T.: 0.002 min
 Response: 129740297
 Conc: 395.97 ng/ml



#26 Chlordane-4

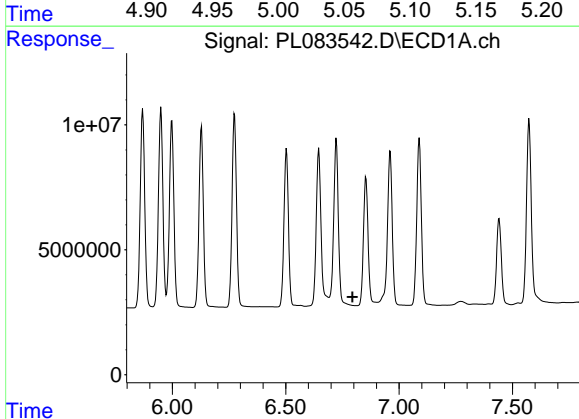
R.T.: 5.950 min
 Delta R.T.: 0.004 min
 Response: 109356315
 Conc: 236.48 ng/ml

Instrument :
 ECD_L
 ClientSampleId :
 PB153489BS



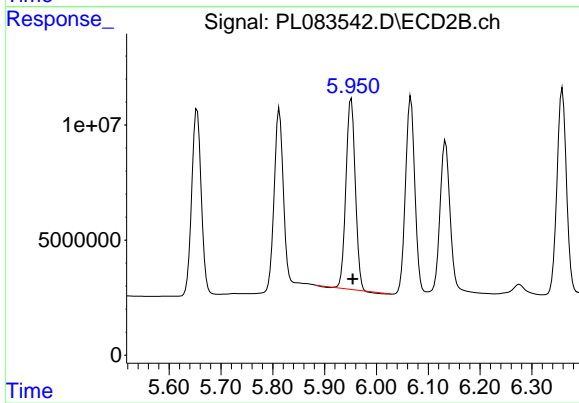
#26 Chlordane-4

R.T.: 5.056 min
 Delta R.T.: 0.003 min
 Response: 129249364
 Conc: 383.44 ng/ml



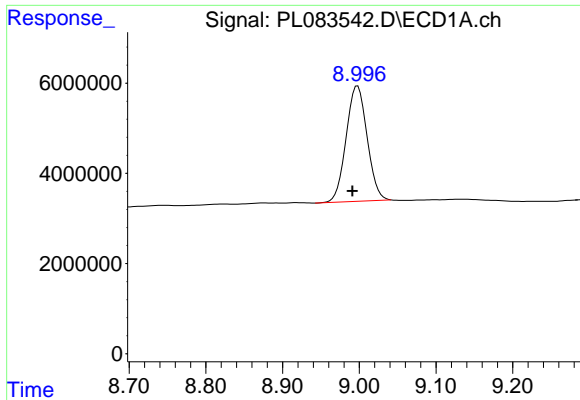
#27 Chlordane-5

R.T.: 0.000 min
 Exp R.T. : 6.795 min
 Response: 0
 Conc: N.D.



#27 Chlordane-5

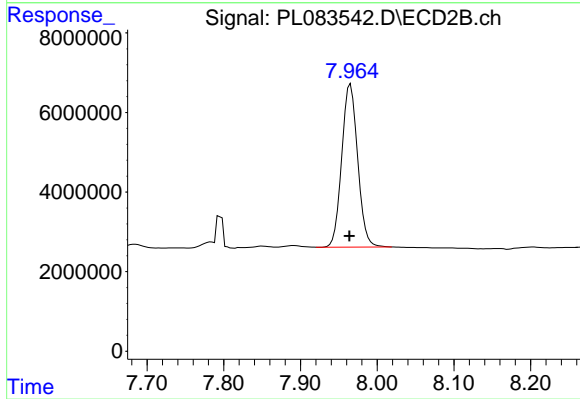
R.T.: 5.951 min
 Delta R.T.: -0.003 min
 Response: 102866609
 Conc: 925.25 ng/ml



#28 Decachlorobiphenyl

R.T.: 8.998 min
Delta R.T.: 0.007 min
Response: 49016349
Conc: 25.72 ng/ml

Instrument :
ECD_L
ClientSampleId :
PB153489BS



#28 Decachlorobiphenyl

R.T.: 7.965 min
Delta R.T.: 0.001 min
Response: 59275173
Conc: 24.13 ng/ml