

Data Path : Z:\pestpcbsrv\HPCHEM1\ECD_L\Data\PL061923\
 Data File : PL083550.D
 Signal(s) : Signal #1: ECD1A.ch Signal #2: ECD2B.ch
 Acq On : 19 Jun 2023 18:18
 Operator : AR\AJ
 Sample : PCHLORCCC500
 Misc :
 ALS Vial : 5 Sample Multiplier: 1

Instrument :
 ECD_L
 ClientSampleId :
 PCHLORCCC500

Integration File signal 1: autoint1.e
 Integration File signal 2: autoint2.e
 Quant Time: Jun 20 04:15:11 2023
 Quant Method : Z:\pestpcbsrv\HPCHEM1\ECD_L\methods\PL061723.M
 Quant Title : GC Extractables
 QLast Update : Sat Jun 17 12:34:26 2023
 Response via : Initial Calibration
 Integrator: ChemStation

Volume Inj. : 1 µl
 Signal #1 Phase : ZB-MR2 Signal #2 Phase: ZB-MR1
 Signal #1 Info : 30M x 0.32mm x0.2 Signal #2 Info : 30M x 0.32mm x0.5µm

Compound	RT#1	RT#2	Resp#1	Resp#2	ng/ml	ng/ml
System Monitoring Compounds						
1) SA Tetrachlo...	3.458	2.754	98964638	130.9E6	44.774	56.190 #
28) SA Decachlor...	8.994	7.964	80843263	101.3E6	42.425	41.254
Target Compounds						
2) A alpha-BHC	3.929f	3.245f	2774716	195662	0.891	0.058 #
3) MA gamma-BHC...	4.213f	3.604	1655354	13695	0.581	0.004 #
4) MA Heptachlor	4.839	3.944	56967890	64677237	20.604	20.893
5) MB Aldrin	5.155f	4.247f	47409100	4773458	18.242	1.586 #
7) B delta-BHC	0.000	4.127	0	7785935	N.D.	2.416 #
8) B Heptachlo...	5.593	0.000	27716023	0	10.919	N.D. #
9) A Endosulfan I	0.000	5.101	0	13847360	N.D.	5.138 #
10) B gamma-Chl...	5.868	4.991	165.8E6	156.3E6	68.925	52.841
11) B alpha-Chl...	5.951	5.055	203.6E6	156.3E6	85.953	52.838 #
12) B 4,4'-DDE	6.104f	5.242	1129521	122739	0.560	0.048 #
13) MA Dieldrin	6.275	5.354f	2602261	794946	1.159	0.283 #
14) MA Endrin	0.000	5.659	0	9834779	N.D.	4.261 #
15) B Endosulfa...	6.705	5.956	3790231	48495555	2.031	20.430 #
16) A 4,4'-DDD	6.656f	5.822	7545507	222831	4.419	0.101 #
17) MA 4,4'-DDT	6.942	6.056	1125905	-206992	0.669	N.D. #
18) B Endrin al...	6.854	6.144	2209568	1456928	1.491	0.771 #
19) B Endosulfa...	7.087	6.362	192434	1552499	0.100	0.641 #
20) A Methoxychlor	7.420	6.632f	697641	191364	0.769	0.159 #
21) B Endrin ke...	0.000	6.853	0	434345	N.D.	0.154 #
22) Mirex	8.050	0.000	615082	0	0.330	N.D. #
23) Chlordane-1	4.624	3.767	41270015	48146002	429.014	491.177
24) Chlordane-2	5.155	4.353	47409100	57074269	436.964	474.634
25) Chlordane-3	5.868	4.991	165.8E6	156.3E6	433.942	477.161
26) Chlordane-4	5.951	5.055	203.6E6	156.3E6	440.275	463.712
27) Chlordane-5	6.799	5.956	30748102	48495555	387.392	436.199

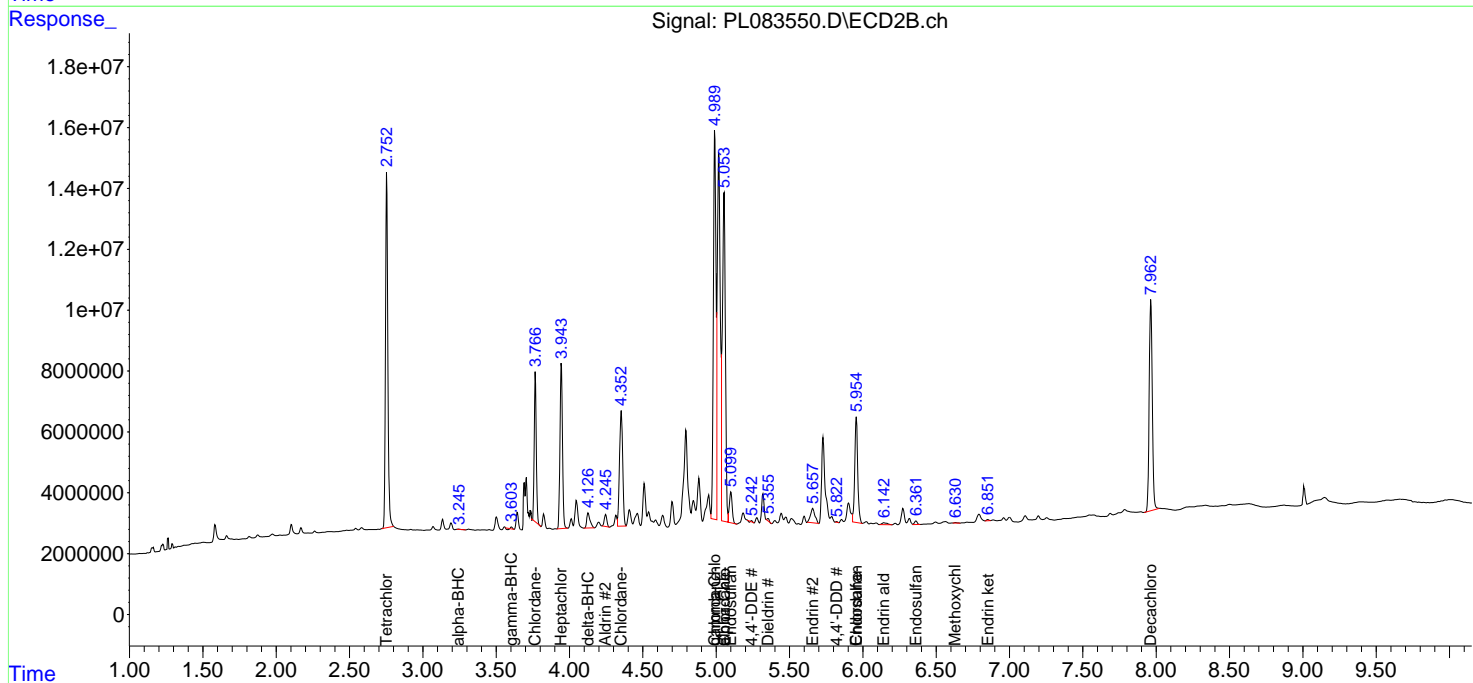
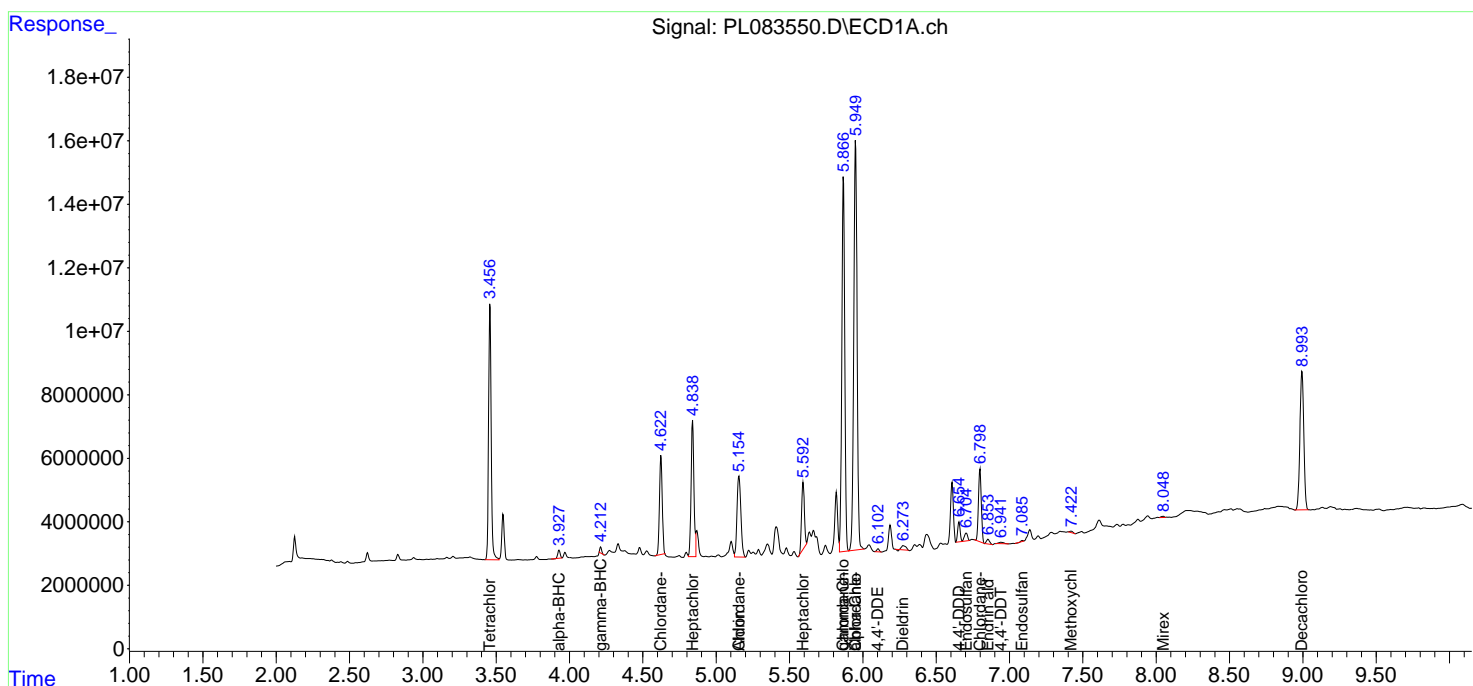
(f)=RT Delta > 1/2 Window (#)=Amounts differ by > 25% (m)=manual int.

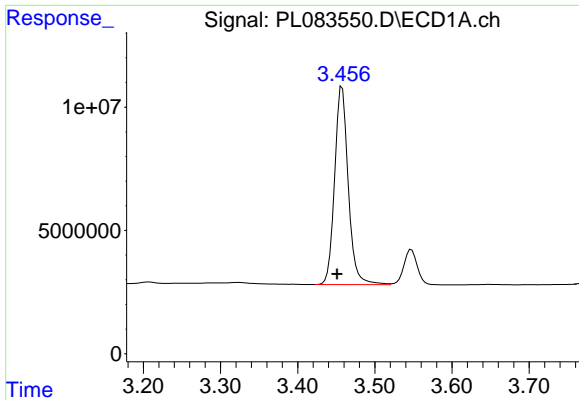
Data Path : Z:\pestpcbsrv\HPCHEM1\ECD_L\Data\PL061923\
 Data File : PL083550.D
 Signal(s) : Signal #1: ECD1A.ch Signal #2: ECD2B.ch
 Acq On : 19 Jun 2023 18:18
 Operator : AR\AJ
 Sample : PCHLORCCC500
 Misc :
 ALS Vial : 5 Sample Multiplier: 1

Instrument :
 ECD_L
 ClientSampleId :
 PCHLORCCC500

Integration File signal 1: autoint1.e
 Integration File signal 2: autoint2.e
 Quant Time: Jun 20 04:15:11 2023
 Quant Method : Z:\pestpcbsrv\HPCHEM1\ECD_L\methods\PL061723.M
 Quant Title : GC Extractables
 QLast Update : Sat Jun 17 12:34:26 2023
 Response via : Initial Calibration
 Integrator: ChemStation

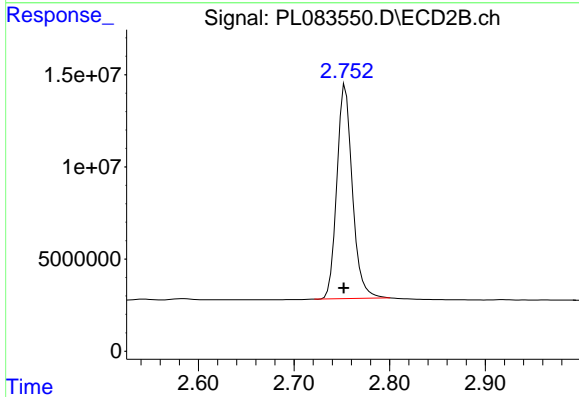
Volume Inj. : 1 µl
 Signal #1 Phase : ZB-MR2 Signal #2 Phase: ZB-MR1
 Signal #1 Info : 30M x 0.32mm x0.2 Signal #2 Info : 30M x 0.32mm x0.5µm



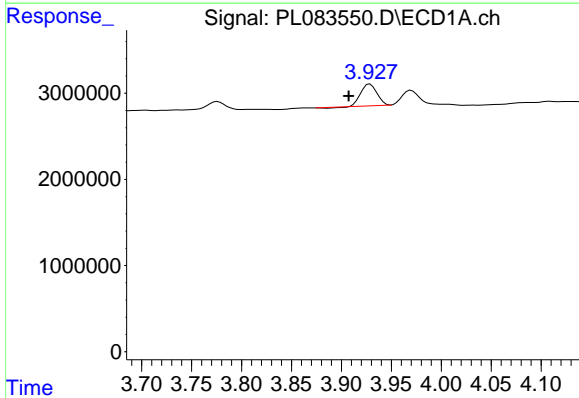


#1 Tetrachloro-m-xylene
 R.T.: 3.458 min
 Delta R.T.: 0.007 min
 Response: 98964638
 Conc: 44.77 ng/ml

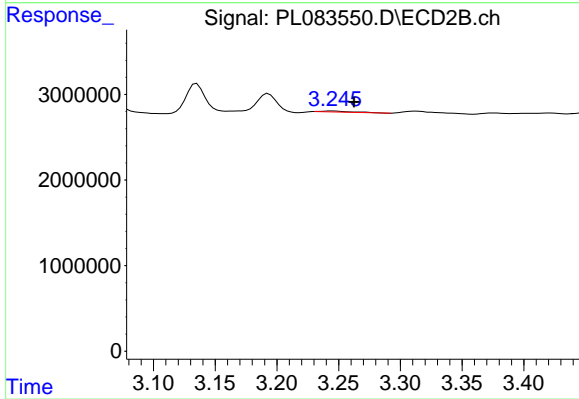
Instrument :
 ECD_L
 ClientSampleId :
 PCHLORCCC500



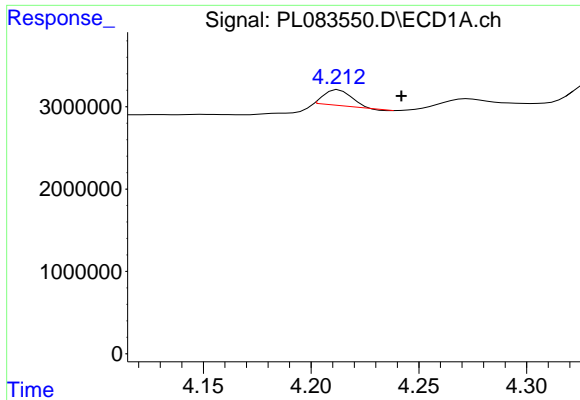
#1 Tetrachloro-m-xylene
 R.T.: 2.754 min
 Delta R.T.: 0.002 min
 Response: 130887917
 Conc: 56.19 ng/ml



#2 alpha-BHC
 R.T.: 3.929 min
 Delta R.T.: 0.021 min
 Response: 2774716
 Conc: 0.89 ng/ml

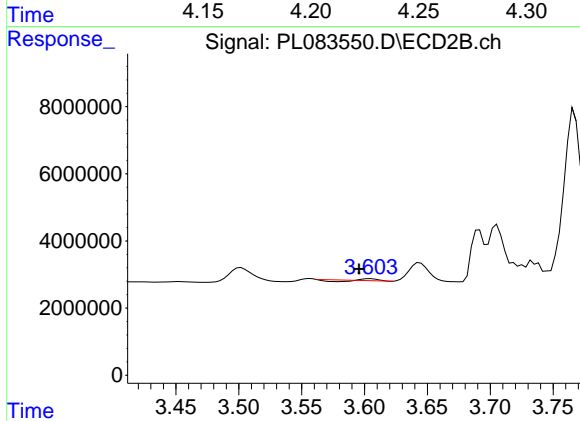


#2 alpha-BHC
 R.T.: 3.245 min
 Delta R.T.: -0.018 min
 Response: 195662
 Conc: 0.06 ng/ml

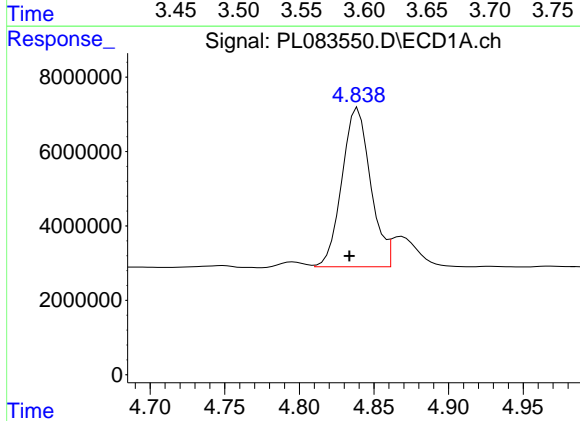


#3 gamma-BHC (Lindane)
 R.T.: 4.213 min
 Delta R.T.: -0.029 min
 Response: 1655354
 Conc: 0.58 ng/ml

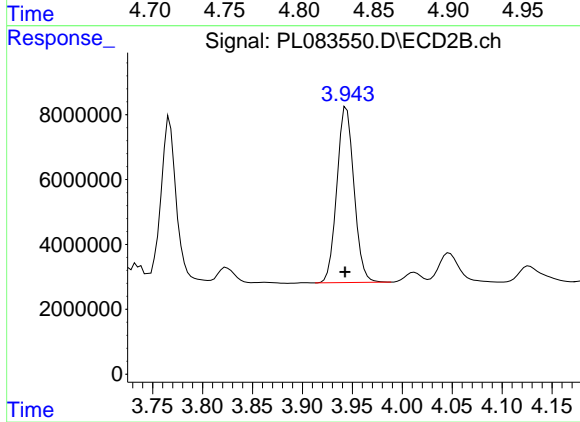
Instrument :
 ECD_L
 ClientSampleId :
 PCHLORCCC500



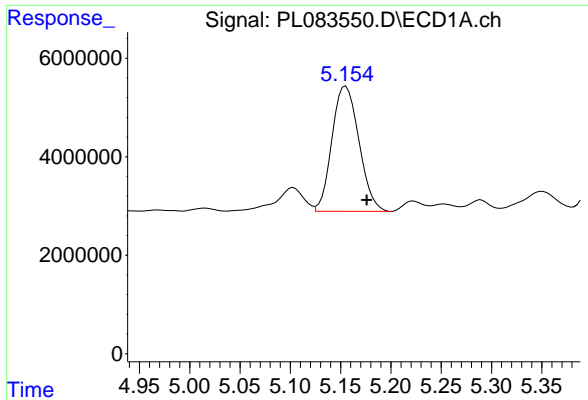
#3 gamma-BHC (Lindane)
 R.T.: 3.604 min
 Delta R.T.: 0.009 min
 Response: 13695
 Conc: 0.00 ng/ml



#4 Heptachlor
 R.T.: 4.839 min
 Delta R.T.: 0.006 min
 Response: 56967890
 Conc: 20.60 ng/ml

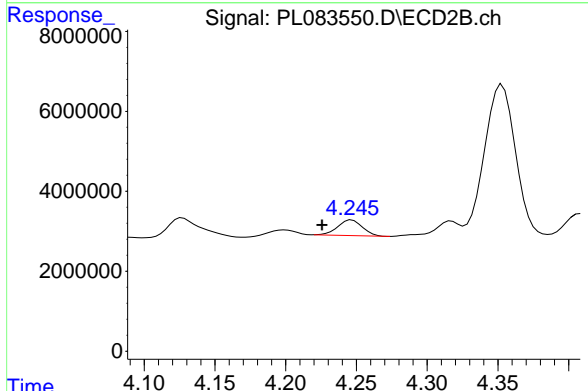


#4 Heptachlor
 R.T.: 3.944 min
 Delta R.T.: 0.001 min
 Response: 64677237
 Conc: 20.89 ng/ml

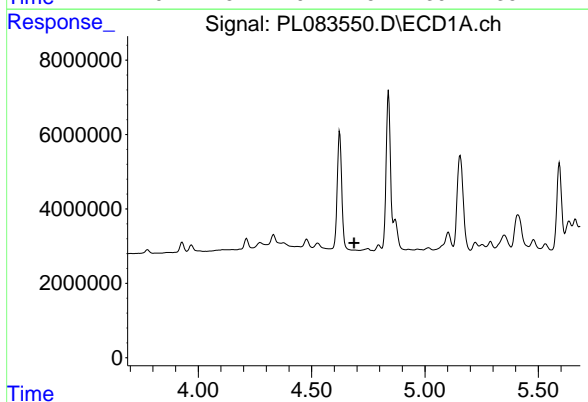


#5 Aldrin
 R.T.: 5.155 min
 Delta R.T.: -0.021 min
 Response: 47409100
 Conc: 18.24 ng/ml

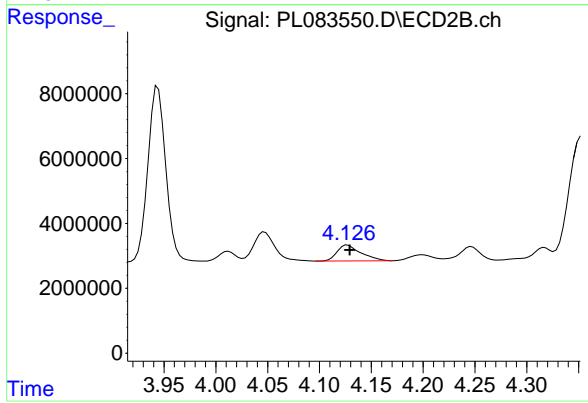
Instrument :
 ECD_L
 ClientSampleId :
 PCHLORCCC500



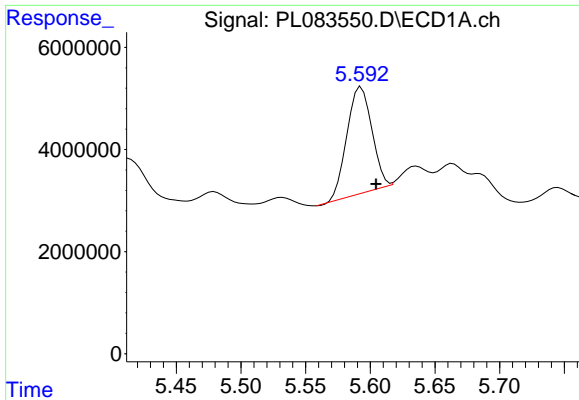
#5 Aldrin
 R.T.: 4.247 min
 Delta R.T.: 0.021 min
 Response: 4773458
 Conc: 1.59 ng/ml



#7 delta-BHC
 R.T.: 0.000 min
 Exp R.T. : 4.687 min
 Response: 0
 Conc: N.D.



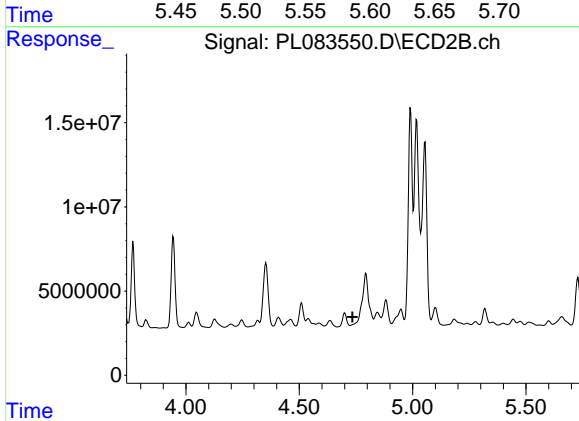
#7 delta-BHC
 R.T.: 4.127 min
 Delta R.T.: -0.002 min
 Response: 7785935
 Conc: 2.42 ng/ml



#8 Heptachlor epoxide

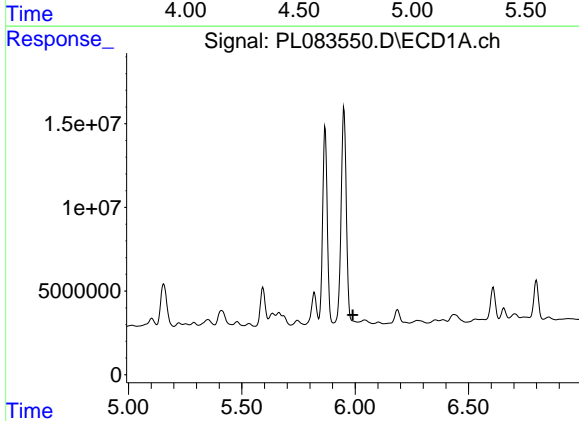
R.T.: 5.593 min
 Delta R.T.: -0.012 min
 Response: 27716023
 Conc: 10.92 ng/ml

Instrument :
 ECD_L
 ClientSampleId :
 PCHLORCCC500



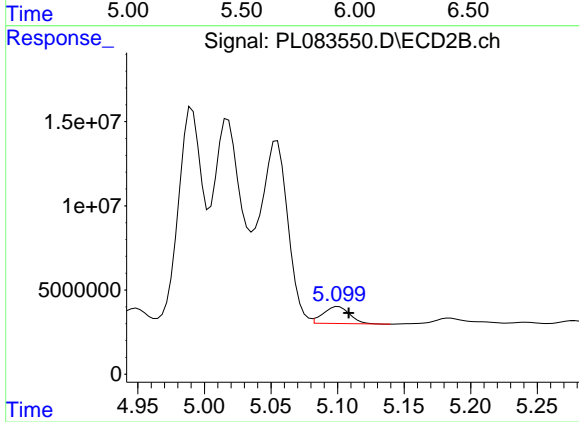
#8 Heptachlor epoxide

R.T.: 0.000 min
 Exp R.T. : 4.735 min
 Response: 0
 Conc: N.D.



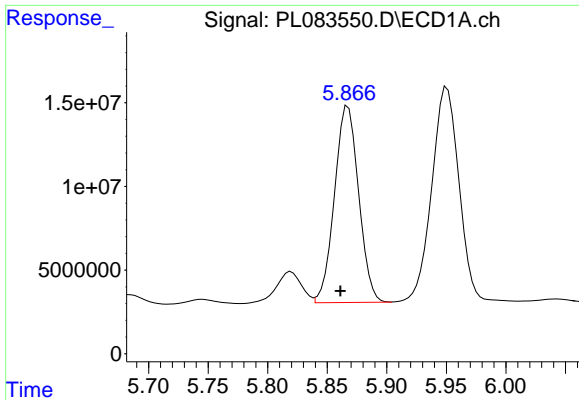
#9 Endosulfan I

R.T.: 0.000 min
 Exp R.T. : 5.989 min
 Response: 0
 Conc: N.D.



#9 Endosulfan I

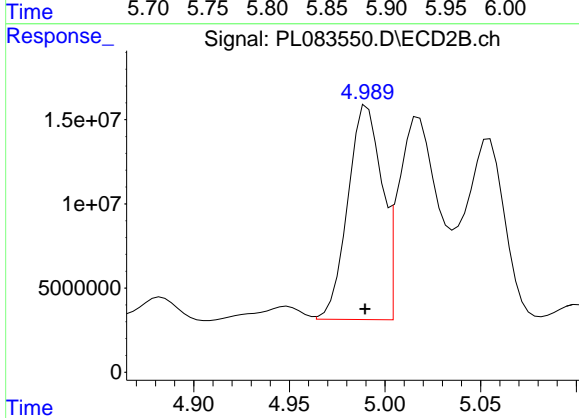
R.T.: 5.101 min
 Delta R.T.: -0.008 min
 Response: 13847360
 Conc: 5.14 ng/ml



#10 gamma-Chlordane

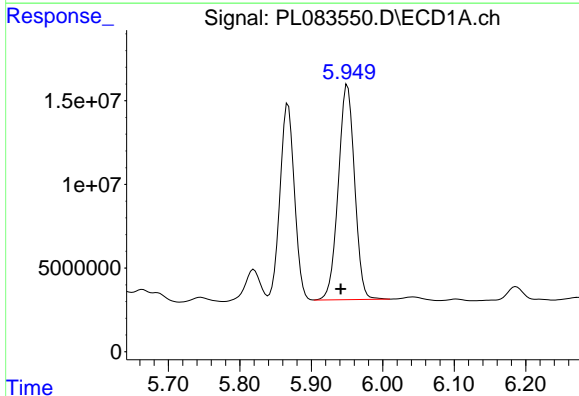
R.T.: 5.868 min
 Delta R.T.: 0.006 min
 Response: 165810808
 Conc: 68.93 ng/ml

Instrument :
 ECD_L
 ClientSampleId :
 PCHLORCCC500



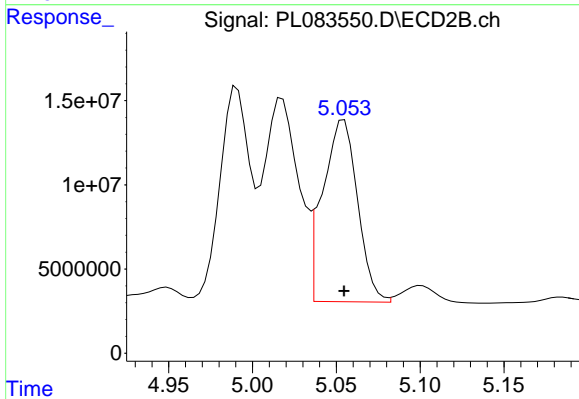
#10 gamma-Chlordane

R.T.: 4.991 min
 Delta R.T.: 0.001 min
 Response: 156344262
 Conc: 52.84 ng/ml



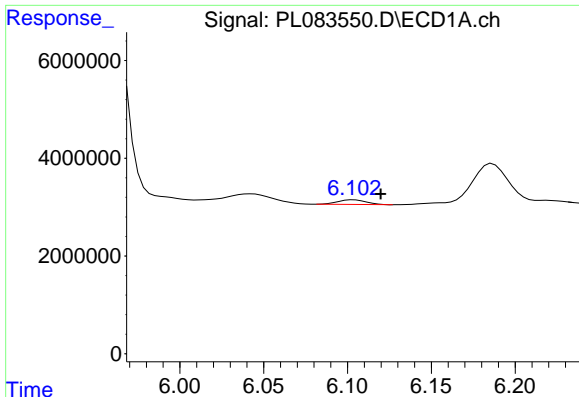
#11 alpha-Chlordane

R.T.: 5.951 min
 Delta R.T.: 0.010 min
 Response: 203593881
 Conc: 85.95 ng/ml



#11 alpha-Chlordane

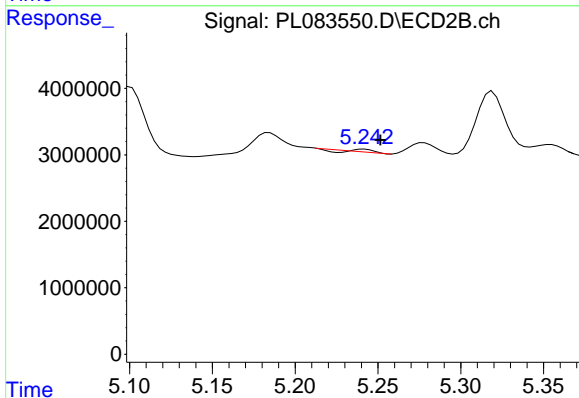
R.T.: 5.055 min
 Delta R.T.: 0.000 min
 Response: 156307650
 Conc: 52.84 ng/ml



#12 4,4'-DDE

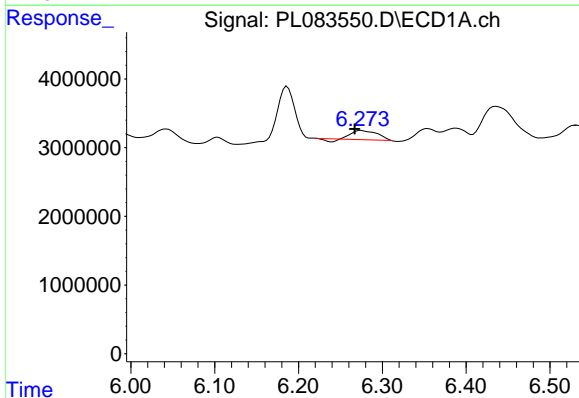
R.T.: 6.104 min
 Delta R.T.: -0.016 min
 Response: 1129521
 Conc: 0.56 ng/ml

Instrument :
 ECD_L
 ClientSampleId :
 PCHLORCCC500



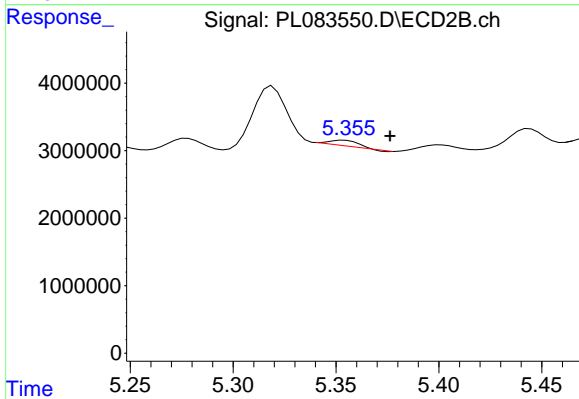
#12 4,4'-DDE

R.T.: 5.242 min
 Delta R.T.: -0.010 min
 Response: 122739
 Conc: 0.05 ng/ml



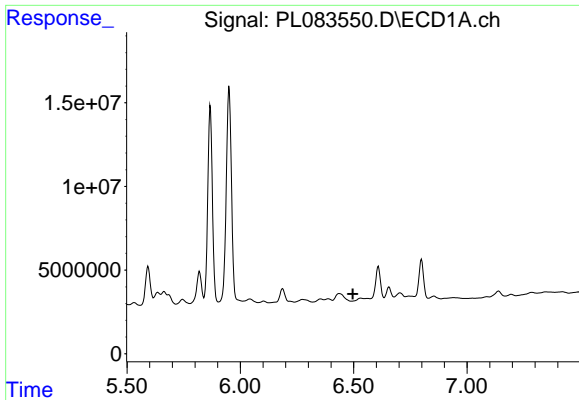
#13 Dieldrin

R.T.: 6.275 min
 Delta R.T.: 0.008 min
 Response: 2602261
 Conc: 1.16 ng/ml



#13 Dieldrin

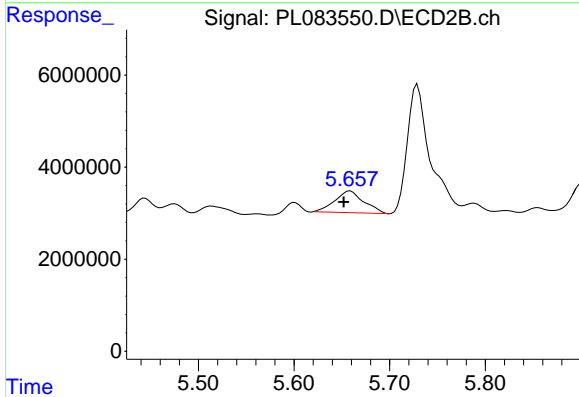
R.T.: 5.354 min
 Delta R.T.: -0.022 min
 Response: 794946
 Conc: 0.28 ng/ml



#14 Endrin

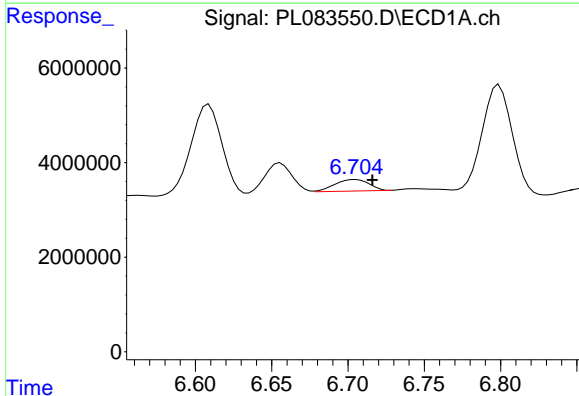
R.T.: 0.000 min
 Exp R.T.: 6.496 min
 Response: 0
 Conc: N.D.

Instrument :
 ECD_L
 ClientSampleId :
 PCHLORCCC500



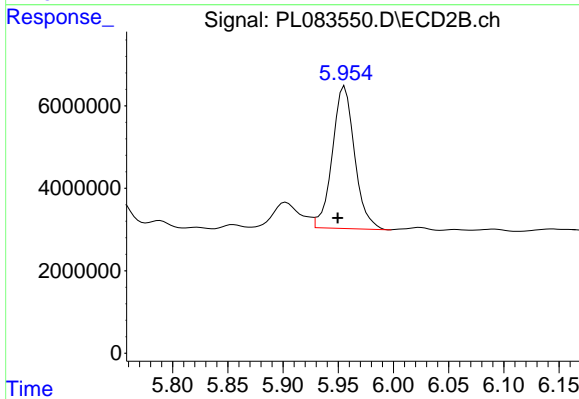
#14 Endrin

R.T.: 5.659 min
 Delta R.T.: 0.007 min
 Response: 9834779
 Conc: 4.26 ng/ml



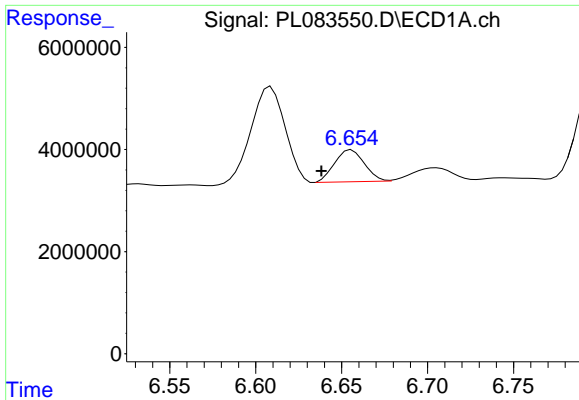
#15 Endosulfan II

R.T.: 6.705 min
 Delta R.T.: -0.011 min
 Response: 3790231
 Conc: 2.03 ng/ml



#15 Endosulfan II

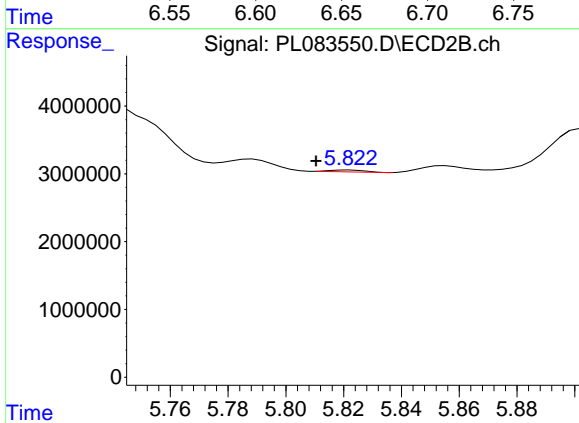
R.T.: 5.956 min
 Delta R.T.: 0.006 min
 Response: 48495555
 Conc: 20.43 ng/ml



#16 4,4'-DDD

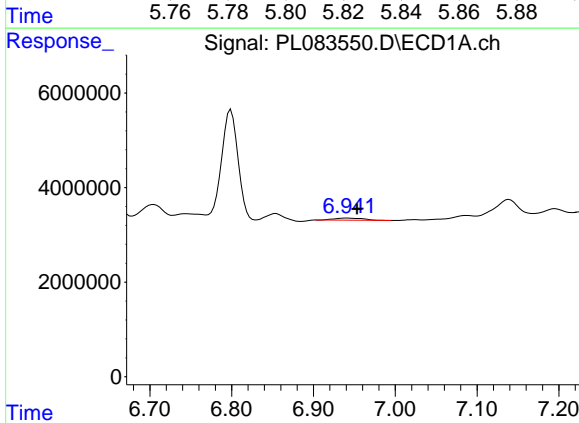
R.T.: 6.656 min
 Delta R.T.: 0.018 min
 Response: 7545507
 Conc: 4.42 ng/ml

Instrument :
 ECD_L
 ClientSampleId :
 PCHLORCCC500



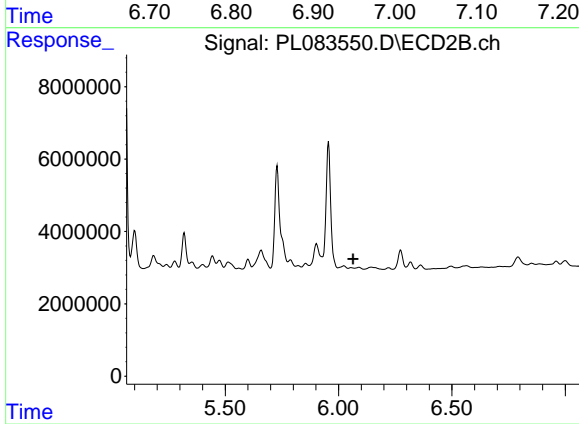
#16 4,4'-DDD

R.T.: 5.822 min
 Delta R.T.: 0.011 min
 Response: 222831
 Conc: 0.10 ng/ml



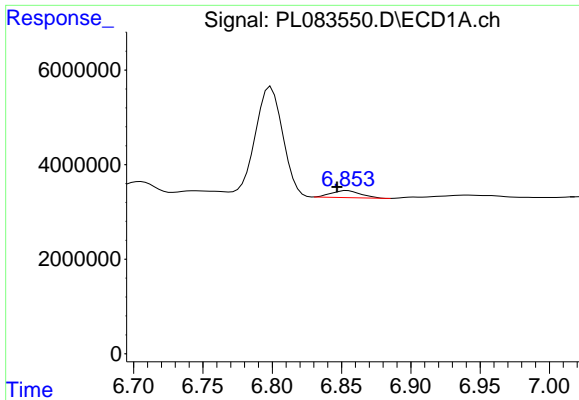
#17 4,4'-DDT

R.T.: 6.942 min
 Delta R.T.: -0.012 min
 Response: 1125905
 Conc: 0.67 ng/ml



#17 4,4'-DDT

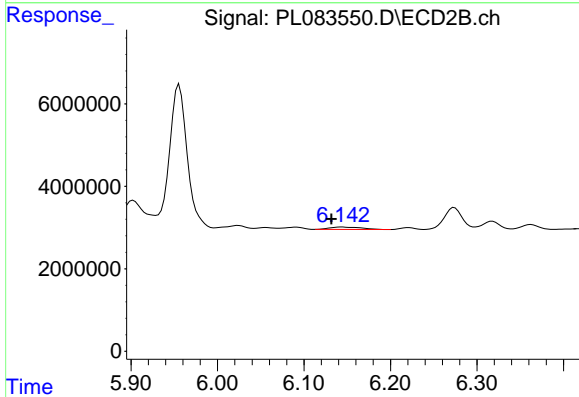
R.T.: 6.056 min
 Delta R.T.: -0.009 min
 Response: -206992
 Conc: N.D.



#18 Endrin aldehyde

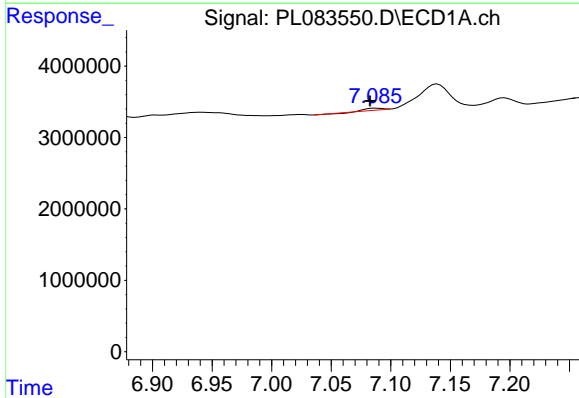
R.T.: 6.854 min
 Delta R.T.: 0.007 min
 Response: 2209568
 Conc: 1.49 ng/ml

Instrument :
 ECD_L
 ClientSampleId :
 PCHLORCCC500



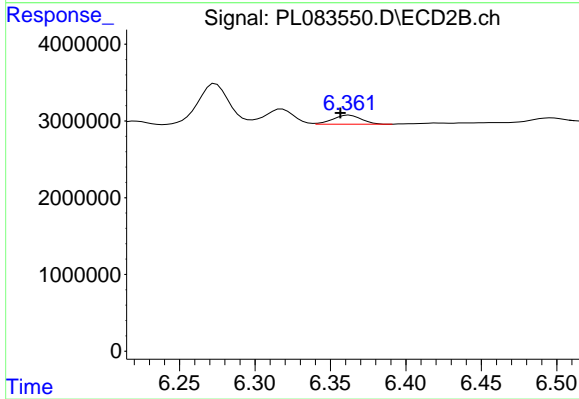
#18 Endrin aldehyde

R.T.: 6.144 min
 Delta R.T.: 0.012 min
 Response: 1456928
 Conc: 0.77 ng/ml



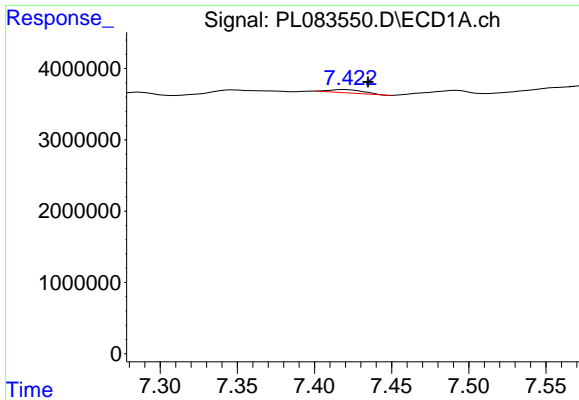
#19 Endosulfan Sulfate

R.T.: 7.087 min
 Delta R.T.: 0.004 min
 Response: 192434
 Conc: 0.10 ng/ml



#19 Endosulfan Sulfate

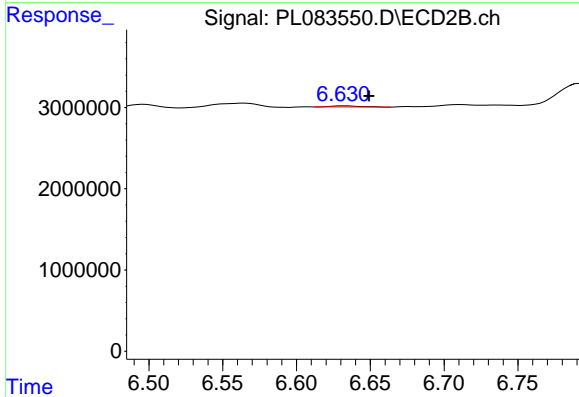
R.T.: 6.362 min
 Delta R.T.: 0.006 min
 Response: 1552499
 Conc: 0.64 ng/ml



#20 Methoxychlor

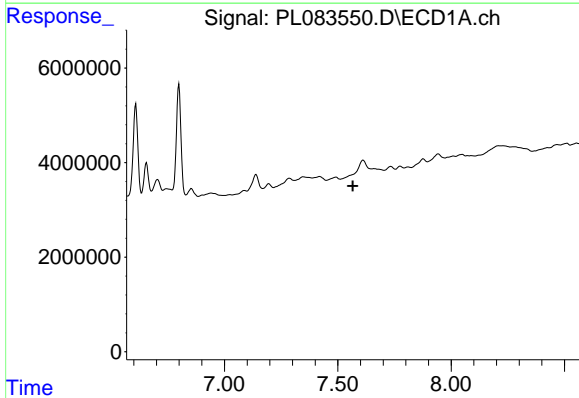
R.T.: 7.420 min
 Delta R.T.: -0.015 min
 Response: 697641
 Conc: 0.77 ng/ml

Instrument :
 ECD_L
 ClientSampleId :
 PCHLORCCC500



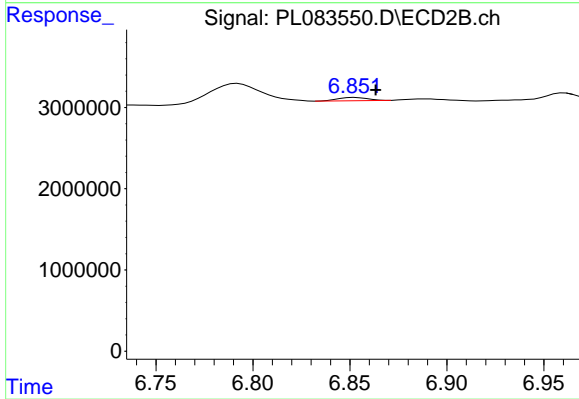
#20 Methoxychlor

R.T.: 6.632 min
 Delta R.T.: -0.017 min
 Response: 191364
 Conc: 0.16 ng/ml



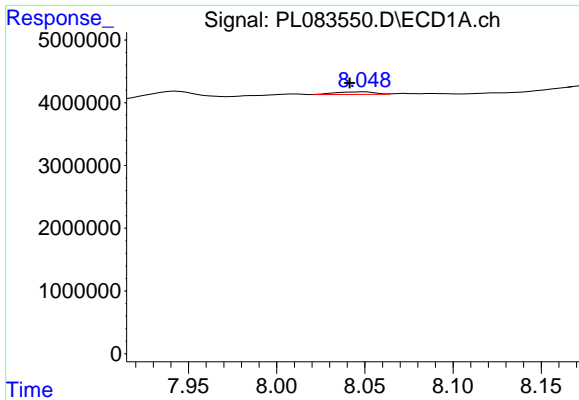
#21 Endrin ketone

R.T.: 0.000 min
 Exp R.T. : 7.567 min
 Response: 0
 Conc: N.D.



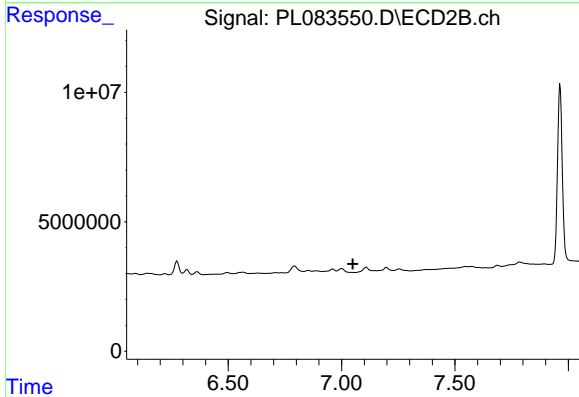
#21 Endrin ketone

R.T.: 6.853 min
 Delta R.T.: -0.011 min
 Response: 434345
 Conc: 0.15 ng/ml

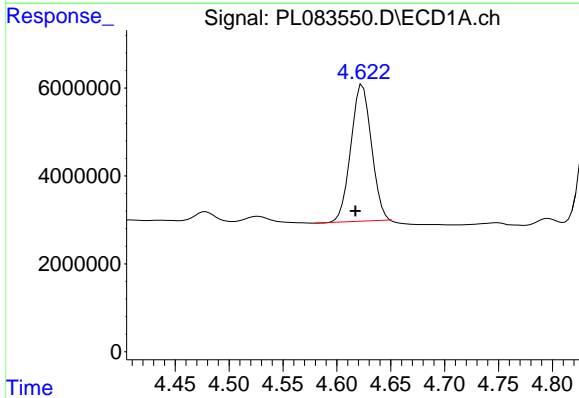


#22 Mirex
 R.T.: 8.050 min
 Delta R.T.: 0.008 min
 Response: 615082
 Conc: 0.33 ng/ml

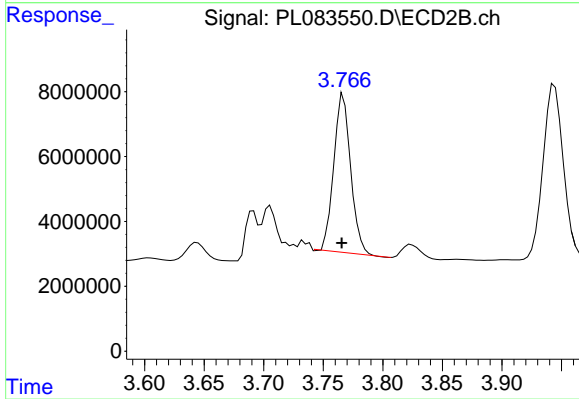
Instrument :
 ECD_L
 ClientSampleId :
 PCHLORCCC500



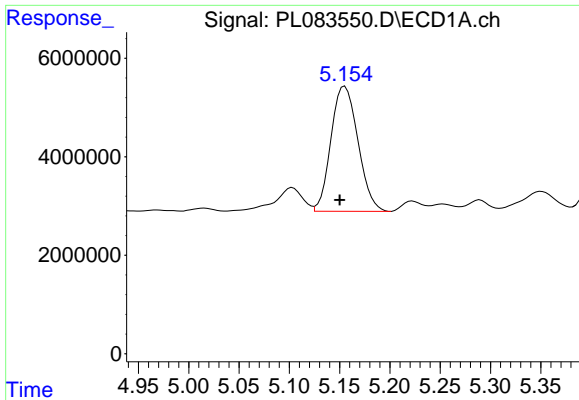
#22 Mirex
 R.T.: 0.000 min
 Exp R.T. : 7.050 min
 Response: 0
 Conc: N.D.



#23 Chlordane-1
 R.T.: 4.624 min
 Delta R.T.: 0.007 min
 Response: 41270015
 Conc: 429.01 ng/ml



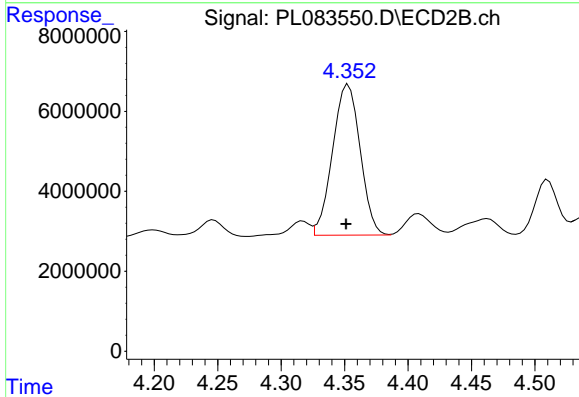
#23 Chlordane-1
 R.T.: 3.767 min
 Delta R.T.: 0.002 min
 Response: 48146002
 Conc: 491.18 ng/ml



#24 Chlordane-2

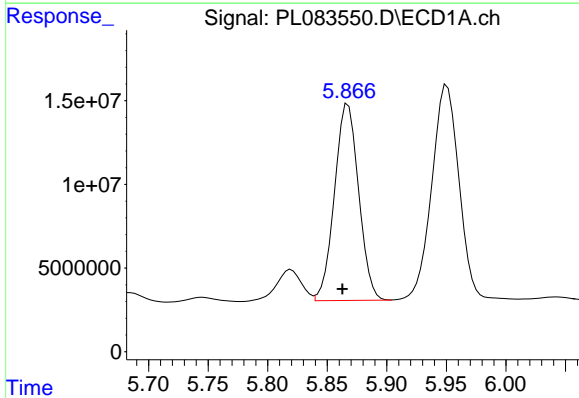
R.T.: 5.155 min
 Delta R.T.: 0.005 min
 Response: 47409100
 Conc: 436.96 ng/ml

Instrument :
 ECD_L
 ClientSampleId :
 PCHLORCCC500



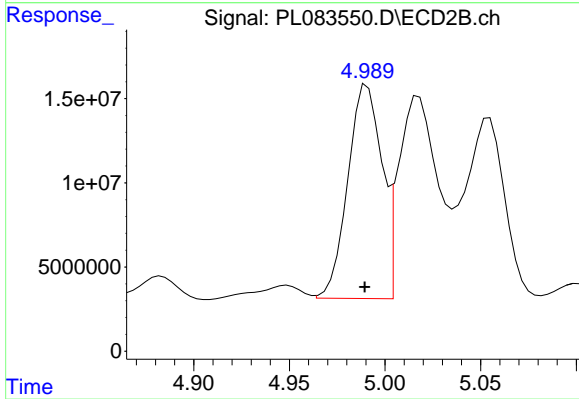
#24 Chlordane-2

R.T.: 4.353 min
 Delta R.T.: 0.002 min
 Response: 57074269
 Conc: 474.63 ng/ml



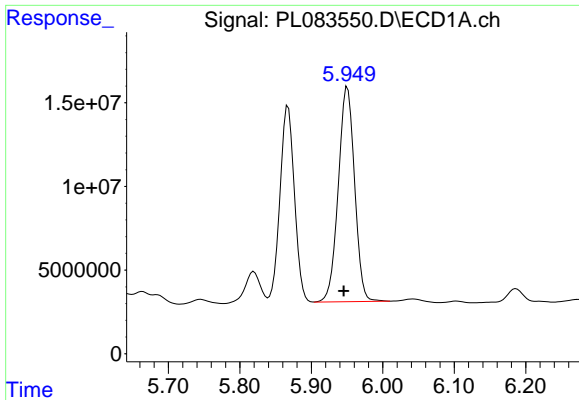
#25 Chlordane-3

R.T.: 5.868 min
 Delta R.T.: 0.005 min
 Response: 165810808
 Conc: 433.94 ng/ml



#25 Chlordane-3

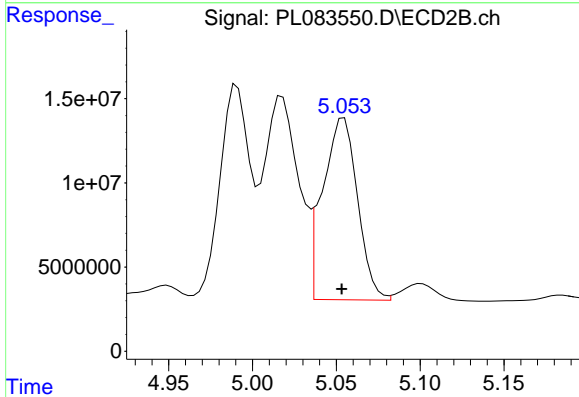
R.T.: 4.991 min
 Delta R.T.: 0.001 min
 Response: 156344262
 Conc: 477.16 ng/ml



#26 Chlordane-4

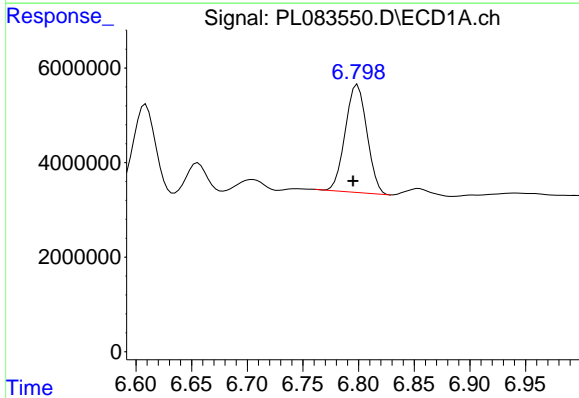
R.T.: 5.951 min
 Delta R.T.: 0.005 min
 Response: 203593881
 Conc: 440.28 ng/ml

Instrument :
 ECD_L
 ClientSampleId :
 PCHLORCCC500



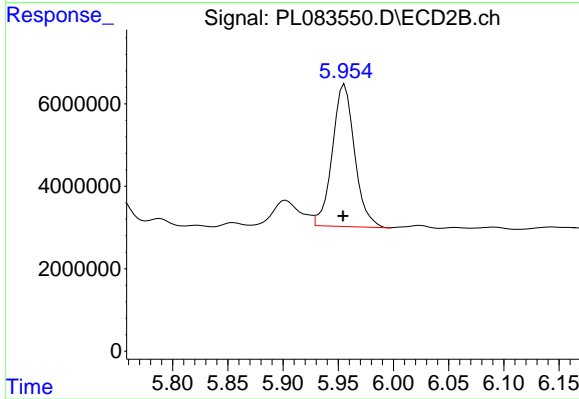
#26 Chlordane-4

R.T.: 5.055 min
 Delta R.T.: 0.001 min
 Response: 156307650
 Conc: 463.71 ng/ml



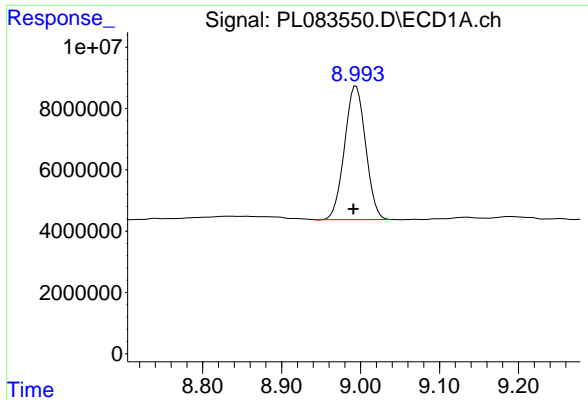
#27 Chlordane-5

R.T.: 6.799 min
 Delta R.T.: 0.004 min
 Response: 30748102
 Conc: 387.39 ng/ml



#27 Chlordane-5

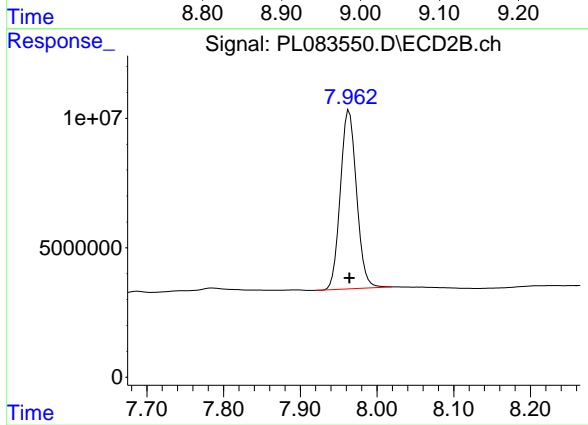
R.T.: 5.956 min
 Delta R.T.: 0.001 min
 Response: 48495555
 Conc: 436.20 ng/ml



#28 Decachlorobiphenyl

R.T.: 8.994 min
Delta R.T.: 0.003 min
Response: 80843263
Conc: 42.43 ng/ml

Instrument :
ECD_L
ClientSampleId :
PCHLORCCC500



#28 Decachlorobiphenyl

R.T.: 7.964 min
Delta R.T.: 0.000 min
Response: 101323054
Conc: 41.25 ng/ml