

Data Path : Z:\pestpcbsrv\HPCHEM1\ECD\_L\Data\PL062019\  
 Data File : PL049699.D  
 Signal(s) : Signal #1: ECD1A.ch Signal #2: ECD2B.ch  
 Acq On : 20 Jun 2019 19:13  
 Operator : SM\AJ  
 Sample : PB120787BS  
 Misc :  
 ALS Vial : 18 Sample Multiplier: 1

Instrument :  
 ECD\_L  
 ClientSampleId :  
 PB120787BS

Integration File signal 1: autoint1.e  
 Integration File signal 2: autoint2.e  
 Quant Time: Jun 21 03:50:01 2019  
 Quant Method : Z:\pestpcbsrv\HPCHEM1\ECD\_L\methods\PL062019.M  
 Quant Title : GC Extractables  
 QLast Update : Fri Jun 21 02:23:20 2019  
 Response via : Initial Calibration  
 Integrator: ChemStation

Volume Inj. : 1 µl  
 Signal #1 Phase : ZB-MR2 Signal #2 Phase: ZB-MR1  
 Signal #1 Info : 30M x 0.32mm x0.2 Signal #2 Info : 30M x 0.32mm x0.5µm

Compound	RT#1	RT#2	Resp#1	Resp#2	ng/ml	ng/ml
-----						
System Monitoring Compounds						
1) SA Tetrachlo...	3.323	3.935	196.6E6	56449382	17.437	18.437
28) SA Decachlor...	7.992	8.974	237.5E6	65191548	18.691	19.419
Target Compounds						
2) A alpha-BHC	3.751	4.324	823.5E6	198.0E6	43.832	44.233
3) MA gamma-BHC...	4.027	4.608	789.0E6	186.9E6	44.500	45.066
4) MA Heptachlor	4.312	5.111	835.9E6	198.6E6	45.985	45.884
5) MB Aldrin	4.551	5.414	807.2E6	182.9E6	46.745	46.684
6) B beta-BHC	4.282	4.783	324.0E6	85066770	44.292	43.916
7) B delta-BHC	4.475	4.998	722.9E6	161.6E6	40.424	41.032
8) B Heptachlo...	4.987	5.800	742.0E6	164.4E6	46.095	45.223
9) A Endosulfan I	5.318	6.156	711.1E6	156.1E6	45.962	45.953
10) B gamma-Chl...	5.210	6.034	771.3E6	168.7E6	45.133	45.259
11) B alpha-Chl...	5.266	6.106	747.5E6	167.2E6	45.034	45.213
12) B 4,4'-DDE	5.433	6.266	749.5E6	161.0E6	44.991	46.397
13) MA Dieldrin	5.557	6.412	761.7E6	161.9E6	45.726	45.651
14) MA Endrin	5.810	6.630	720.7E6	141.2E6	45.001	44.711
15) B Endosulfa...	6.085	6.842	663.7E6	142.2E6	45.545	44.152
16) A 4,4'-DDD	5.945	6.757	598.9E6	118.3E6	47.442	45.270
17) MA 4,4'-DDT	6.179	7.054	617.4E6	133.5E6	46.509	45.574
18) B Endrin al...	6.252	6.966	529.5E6	122.4E6	44.828	44.566
19) B Endosulfa...	6.464	7.189	587.9E6	136.6E6	45.340	45.398
20) A Methoxychlor	6.724	7.515	292.3E6	74916733	44.839	44.947
21) B Endrin ke...	6.946	7.658	657.0E6	146.8E6	46.743	47.116
22) Mirex	7.120	8.107	507.6E6	125.1E6	49.110	49.464
24) Chlordane-2	0.000	5.414f	0	182.9E6	N.D.	1177.183 #
25) Chlordane-3	5.210	6.034	771.3E6	168.7E6	410.642	338.921
26) Chlordane-4	5.266	6.106	747.5E6	167.2E6	428.338	281.346 #
27) Chlordane-5	6.085	0.000	663.7E6	0	1182.552	N.D. #

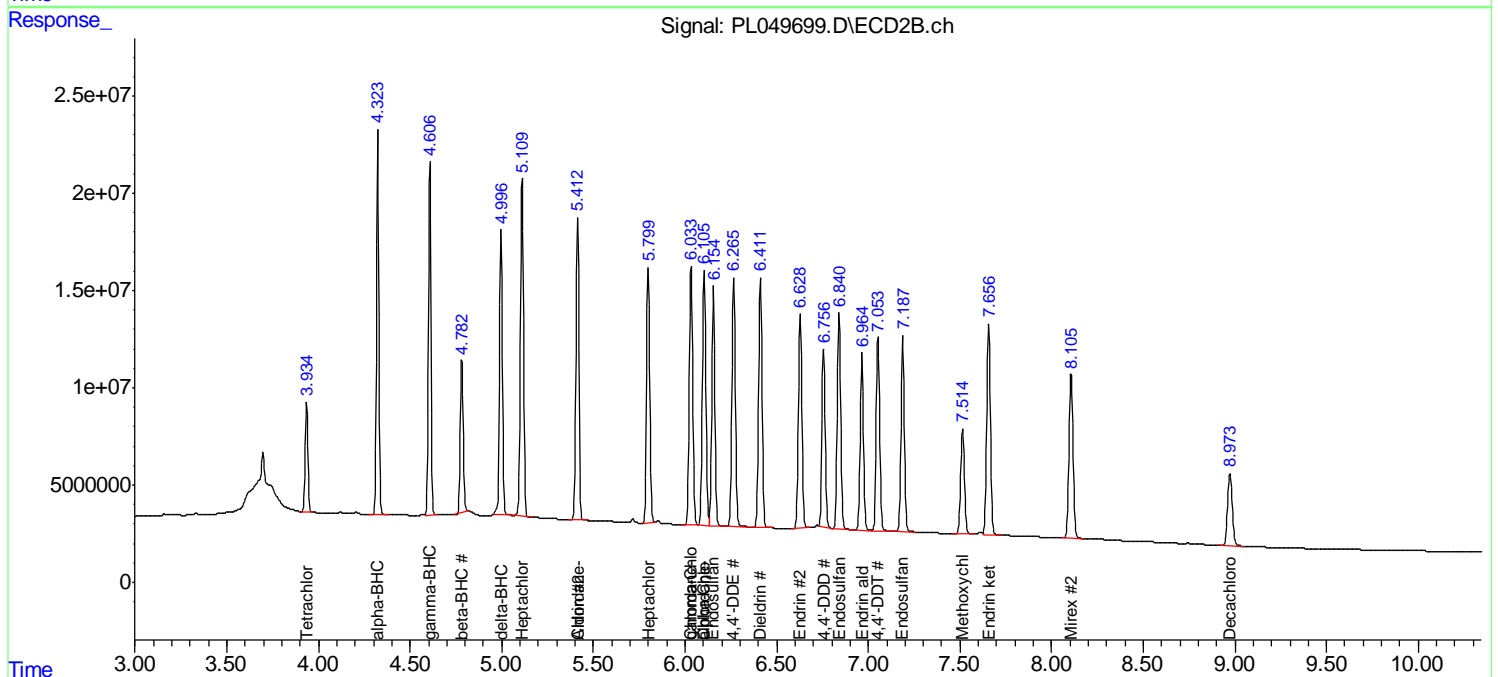
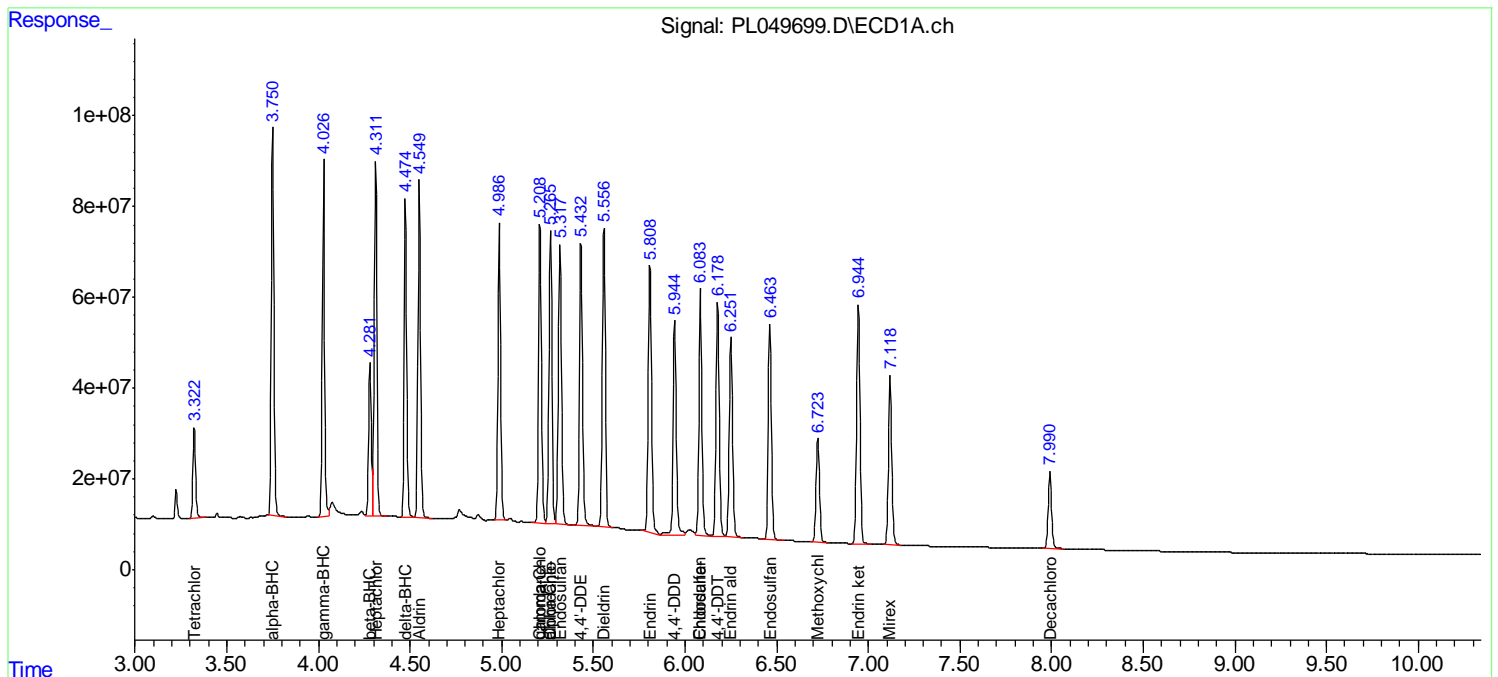
(f)=RT Delta > 1/2 Window (#)=Amounts differ by > 25% (m)=manual int.

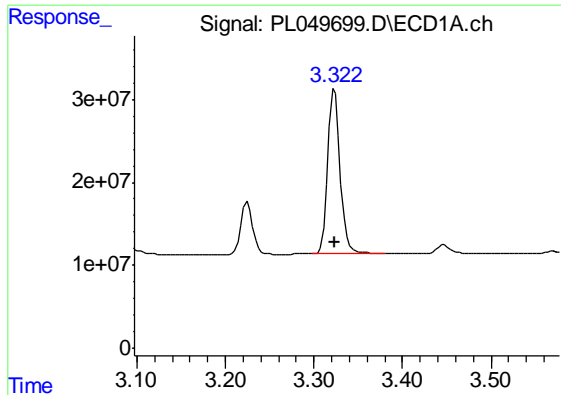
Data Path : Z:\pestpcbsrv\HPCHEM1\ECD\_L\Data\PL062019\  
 Data File : PL049699.D  
 Signal(s) : Signal #1: ECD1A.ch Signal #2: ECD2B.ch  
 Acq On : 20 Jun 2019 19:13  
 Operator : SM\AJ  
 Sample : PB120787BS  
 Misc :  
 ALS Vial : 18 Sample Multiplier: 1

Instrument :  
 ECD\_L  
 Client Sampled :  
 PB120787BS

Integration File signal 1: autoint1.e  
 Integration File signal 2: autoint2.e  
 Quant Time: Jun 21 03:50:01 2019  
 Quant Method : Z:\pestpcbsrv\HPCHEM1\ECD\_L\methods\PL062019.M  
 Quant Title : GC Extractables  
 QLast Update : Fri Jun 21 02:23:20 2019  
 Response via : Initial Calibration  
 Integrator: ChemStation

Volume Inj. : 1 µl  
 Signal #1 Phase : ZB-MR2 Signal #2 Phase: ZB-MR1  
 Signal #1 Info : 30M x 0.32mm x0.2 Signal #2 Info : 30M x 0.32mm x0.5µm

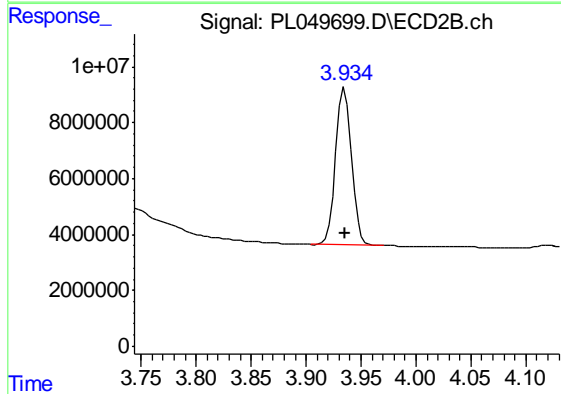




#1 Tetrachloro-m-xylene

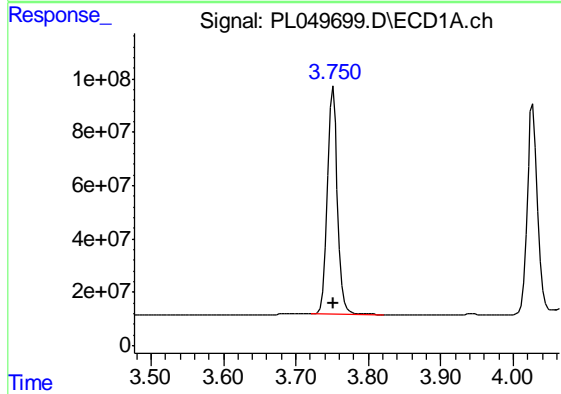
R.T.: 3.323 min  
 Delta R.T.: 0.000 min  
 Response: 196649541  
 Conc: 17.44 ng/ml

Instrument :  
 ECD\_L  
 ClientSampleId :  
 PB120787BS



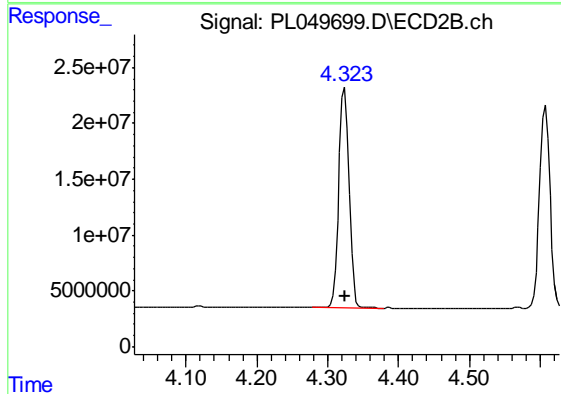
#1 Tetrachloro-m-xylene

R.T.: 3.935 min  
 Delta R.T.: 0.000 min  
 Response: 56449382  
 Conc: 18.44 ng/ml



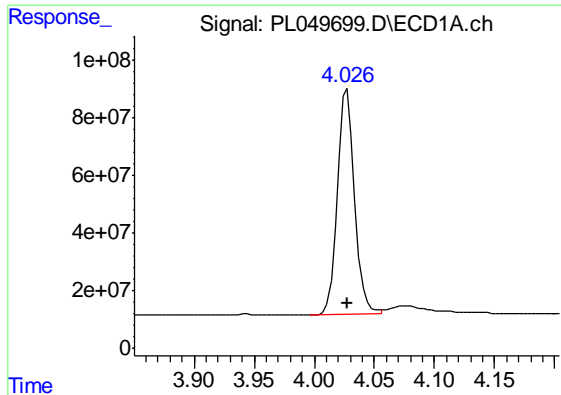
#2 alpha-BHC

R.T.: 3.751 min  
 Delta R.T.: 0.000 min  
 Response: 823494064  
 Conc: 43.83 ng/ml



#2 alpha-BHC

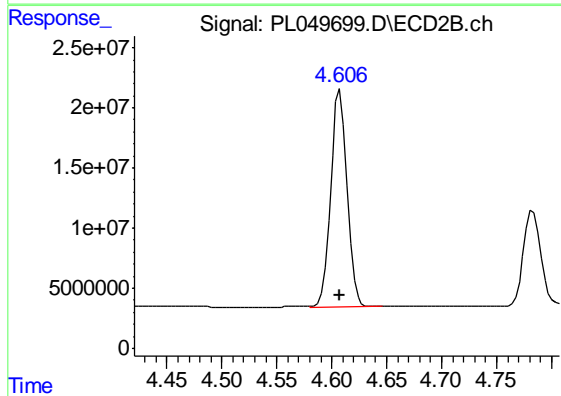
R.T.: 4.324 min  
 Delta R.T.: 0.000 min  
 Response: 198013947  
 Conc: 44.23 ng/ml



#3 gamma-BHC (Lindane)

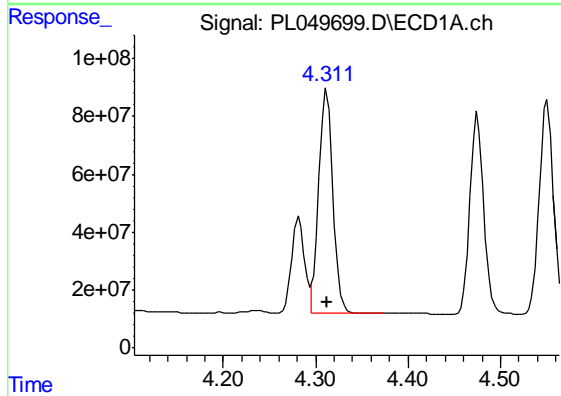
R.T.: 4.027 min  
 Delta R.T.: 0.000 min  
 Response: 789009904  
 Conc: 44.50 ng/ml

Instrument :  
 ECD\_L  
 ClientSampleId :  
 PB120787BS



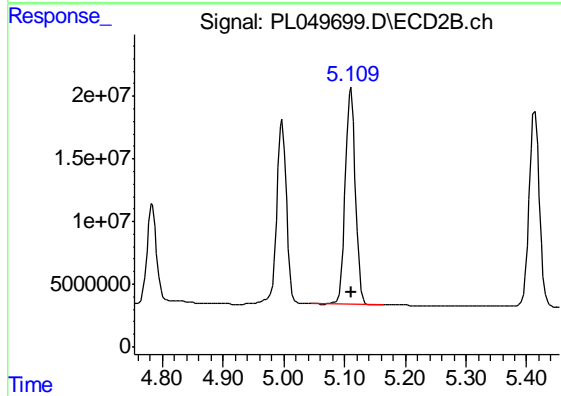
#3 gamma-BHC (Lindane)

R.T.: 4.608 min  
 Delta R.T.: 0.000 min  
 Response: 186927593  
 Conc: 45.07 ng/ml



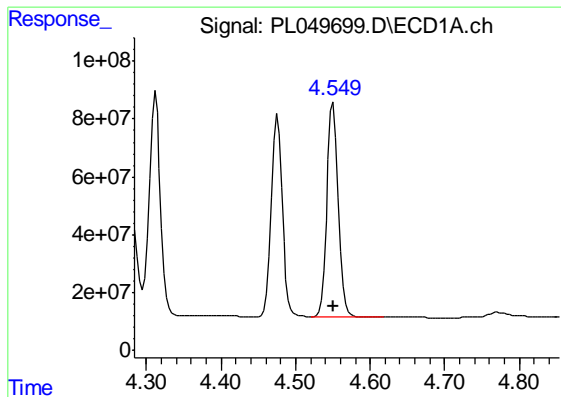
#4 Heptachlor

R.T.: 4.312 min  
 Delta R.T.: 0.000 min  
 Response: 835867669  
 Conc: 45.98 ng/ml



#4 Heptachlor

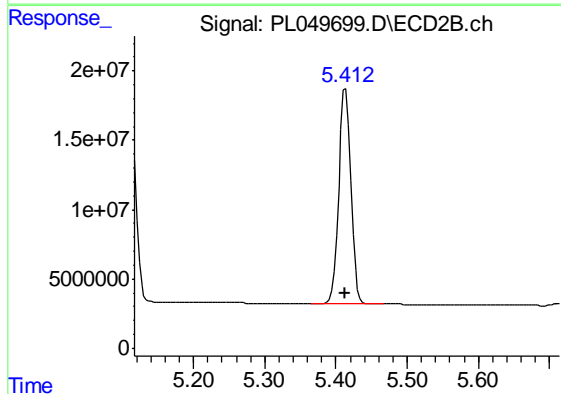
R.T.: 5.111 min  
 Delta R.T.: 0.000 min  
 Response: 198606993  
 Conc: 45.88 ng/ml



#5 Aldrin

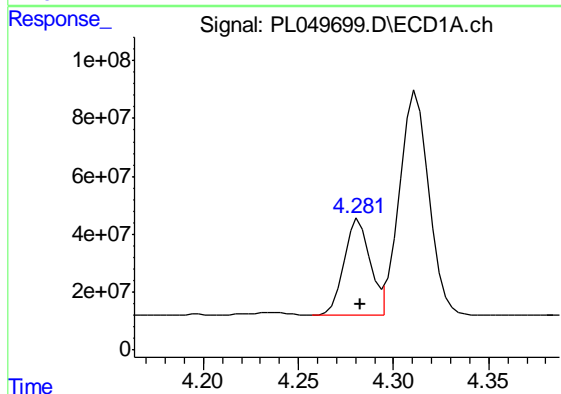
R.T.: 4.551 min  
 Delta R.T.: 0.000 min  
 Response: 807191976  
 Conc: 46.75 ng/ml

Instrument :  
 ECD\_L  
 ClientSampleId :  
 PB120787BS



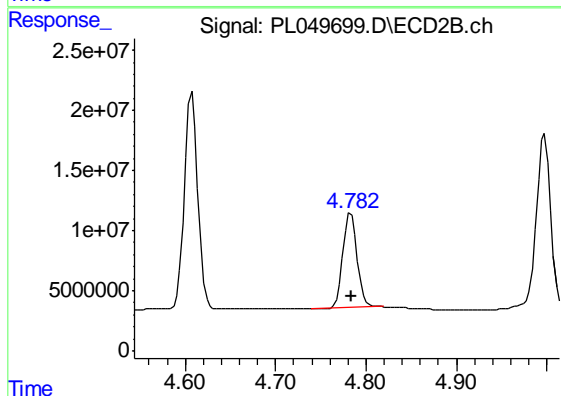
#5 Aldrin

R.T.: 5.414 min  
 Delta R.T.: 0.000 min  
 Response: 182863934  
 Conc: 46.68 ng/ml



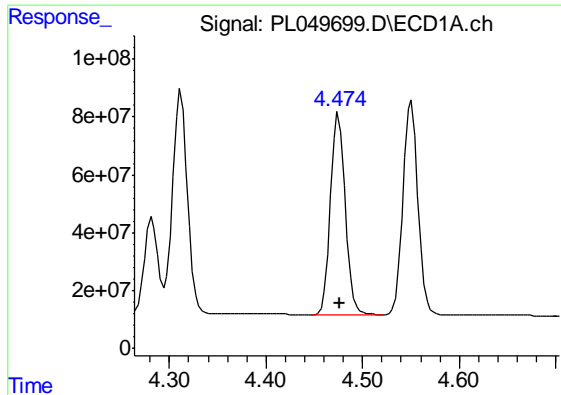
#6 beta-BHC

R.T.: 4.282 min  
 Delta R.T.: 0.000 min  
 Response: 323989894  
 Conc: 44.29 ng/ml



#6 beta-BHC

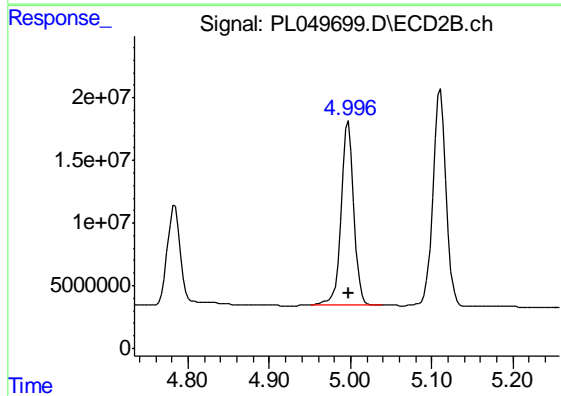
R.T.: 4.783 min  
 Delta R.T.: 0.000 min  
 Response: 85066770  
 Conc: 43.92 ng/ml



#7 delta-BHC

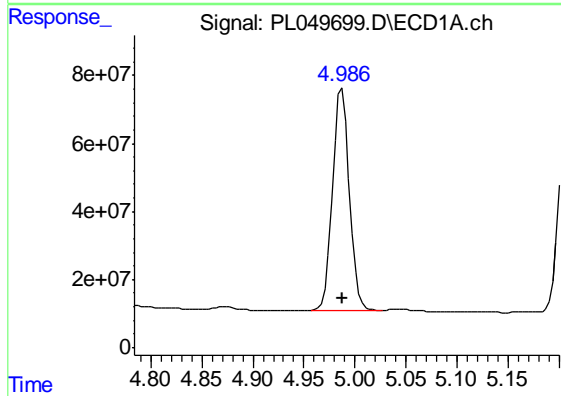
R.T.: 4.475 min  
 Delta R.T.: 0.000 min  
 Response: 722935279  
 Conc: 40.42 ng/ml

Instrument :  
 ECD\_L  
 ClientSampleId :  
 PB120787BS



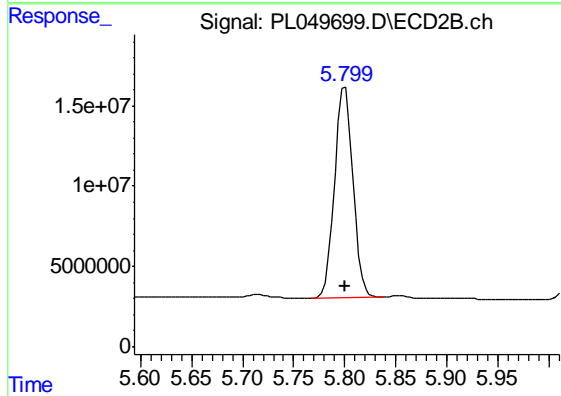
#7 delta-BHC

R.T.: 4.998 min  
 Delta R.T.: 0.000 min  
 Response: 161621306  
 Conc: 41.03 ng/ml



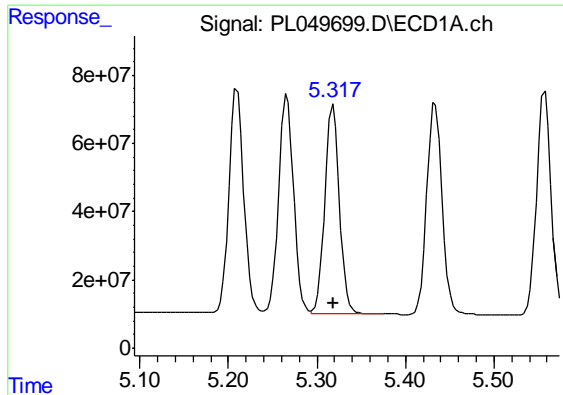
#8 Heptachlor epoxide

R.T.: 4.987 min  
 Delta R.T.: 0.000 min  
 Response: 741997058  
 Conc: 46.09 ng/ml



#8 Heptachlor epoxide

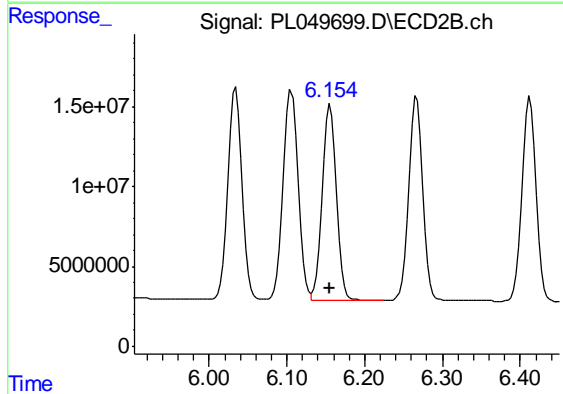
R.T.: 5.800 min  
 Delta R.T.: 0.000 min  
 Response: 164421895  
 Conc: 45.22 ng/ml



#9 Endosulfan I

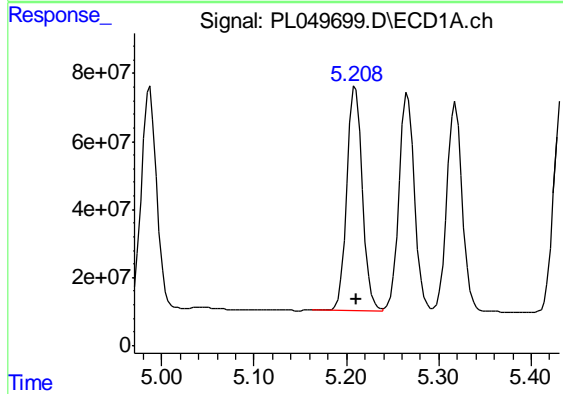
R.T.: 5.318 min  
Delta R.T.: 0.000 min  
Response: 711148624  
Conc: 45.96 ng/ml

Instrument :  
ECD\_L  
ClientSampleId :  
PB120787BS



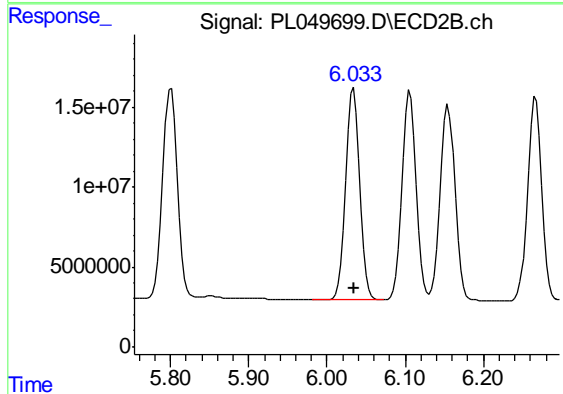
#9 Endosulfan I

R.T.: 6.156 min  
Delta R.T.: 0.000 min  
Response: 156118444  
Conc: 45.95 ng/ml



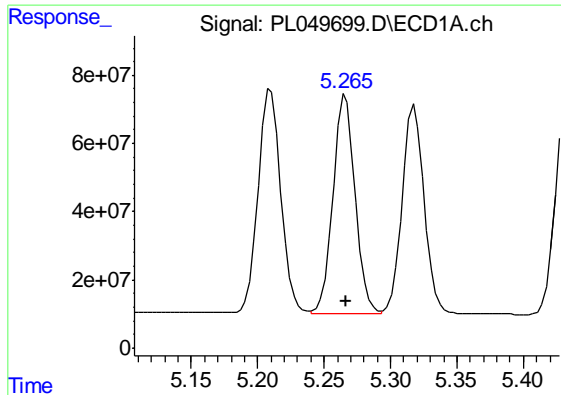
#10 gamma-Chlordane

R.T.: 5.210 min  
Delta R.T.: 0.000 min  
Response: 771274678  
Conc: 45.13 ng/ml



#10 gamma-Chlordane

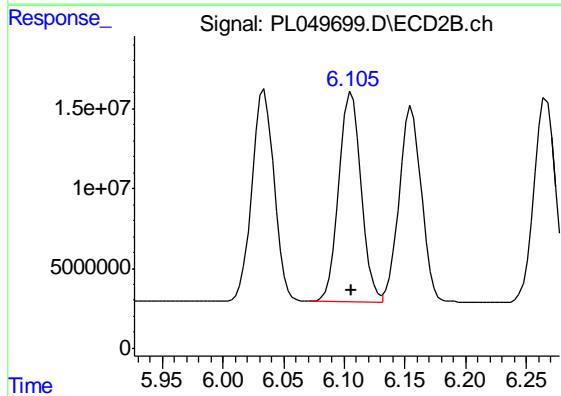
R.T.: 6.034 min  
Delta R.T.: 0.000 min  
Response: 168655564  
Conc: 45.26 ng/ml



#11 alpha-Chlordane

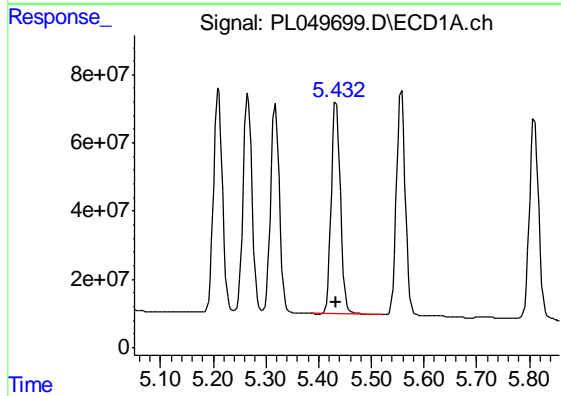
R.T.: 5.266 min  
 Delta R.T.: 0.000 min  
 Response: 747509826  
 Conc: 45.03 ng/ml

Instrument :  
 ECD\_L  
 ClientSampleId :  
 PB120787BS



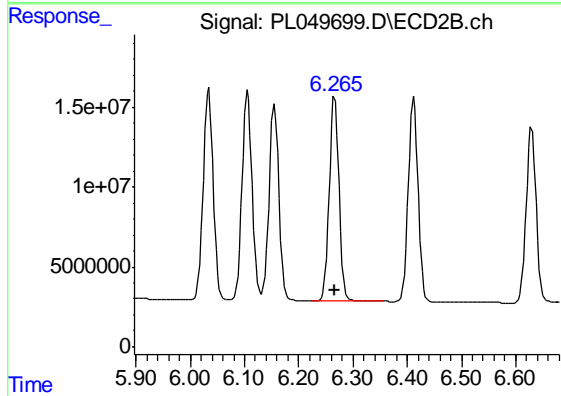
#11 alpha-Chlordane

R.T.: 6.106 min  
 Delta R.T.: 0.000 min  
 Response: 167216128  
 Conc: 45.21 ng/ml



#12 4,4'-DDE

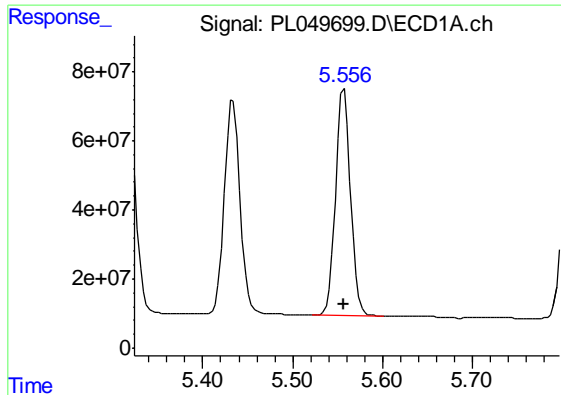
R.T.: 5.433 min  
 Delta R.T.: 0.000 min  
 Response: 749514867  
 Conc: 44.99 ng/ml



#12 4,4'-DDE

R.T.: 6.266 min  
 Delta R.T.: 0.000 min  
 Response: 161004128  
 Conc: 46.40 ng/ml

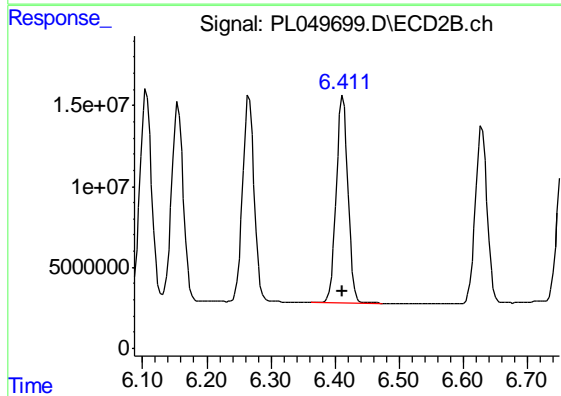




#13 Dieldrin

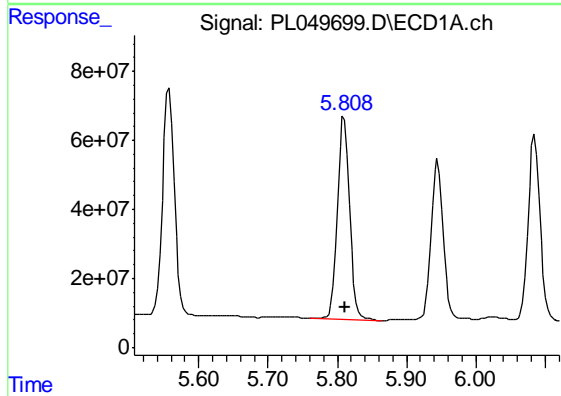
R.T.: 5.557 min  
Delta R.T.: 0.000 min  
Response: 761696692  
Conc: 45.73 ng/ml

Instrument :  
ECD\_L  
ClientSampleId :  
PB120787BS



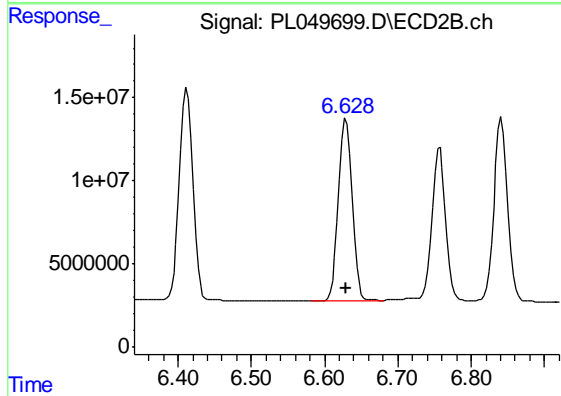
#13 Dieldrin

R.T.: 6.412 min  
Delta R.T.: 0.000 min  
Response: 161947702  
Conc: 45.65 ng/ml



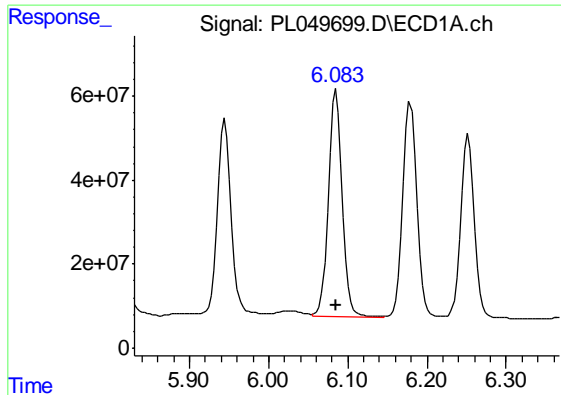
#14 Endrin

R.T.: 5.810 min  
Delta R.T.: 0.000 min  
Response: 720671373  
Conc: 45.00 ng/ml



#14 Endrin

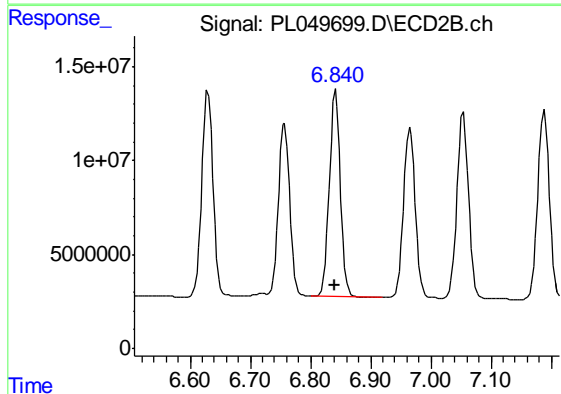
R.T.: 6.630 min  
Delta R.T.: 0.000 min  
Response: 141163166  
Conc: 44.71 ng/ml



#15 Endosulfan II

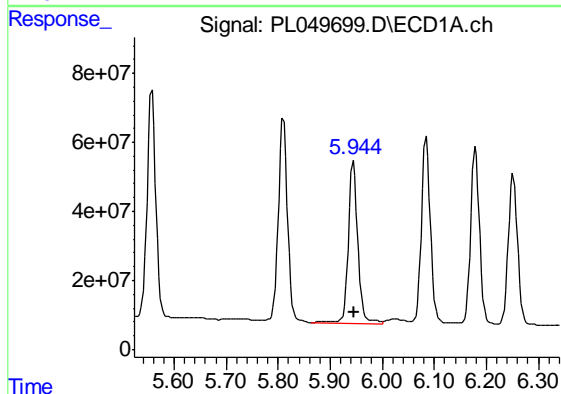
R.T.: 6.085 min  
 Delta R.T.: 0.000 min  
 Response: 663656819  
 Conc: 45.55 ng/ml

Instrument :  
 ECD\_L  
 ClientSampleId :  
 PB120787BS



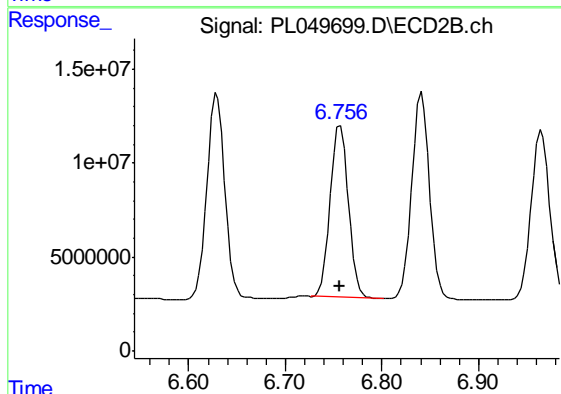
#15 Endosulfan II

R.T.: 6.842 min  
 Delta R.T.: 0.000 min  
 Response: 142210630  
 Conc: 44.15 ng/ml



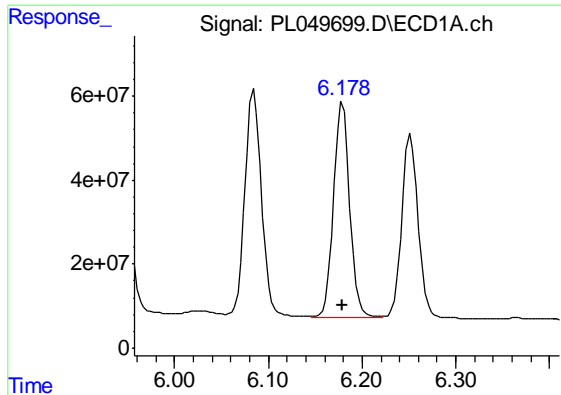
#16 4,4'-DDD

R.T.: 5.945 min  
 Delta R.T.: 0.000 min  
 Response: 598909886  
 Conc: 47.44 ng/ml



#16 4,4'-DDD

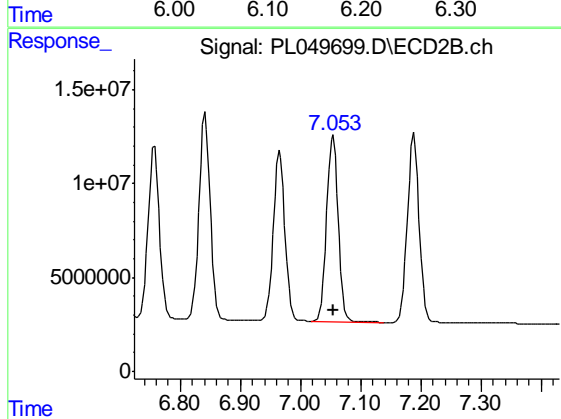
R.T.: 6.757 min  
 Delta R.T.: 0.000 min  
 Response: 118346140  
 Conc: 45.27 ng/ml



#17 4,4'-DDT

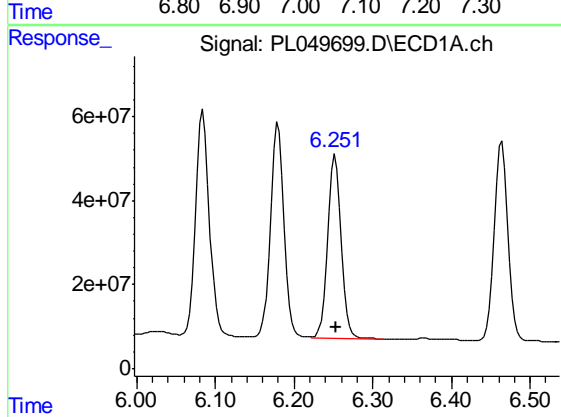
R.T.: 6.179 min  
Delta R.T.: 0.000 min  
Response: 617439527  
Conc: 46.51 ng/ml

Instrument :  
ECD\_L  
ClientSampleId :  
PB120787BS



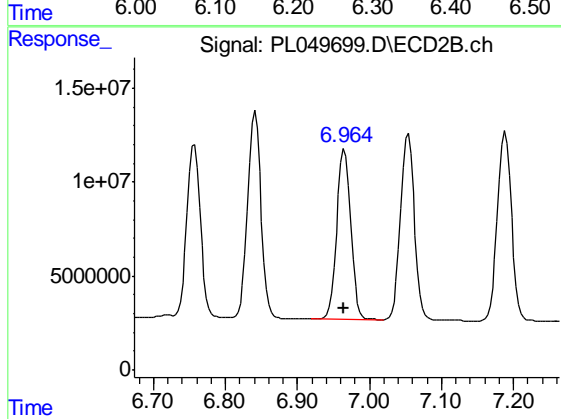
#17 4,4'-DDT

R.T.: 7.054 min  
Delta R.T.: 0.000 min  
Response: 133475216  
Conc: 45.57 ng/ml



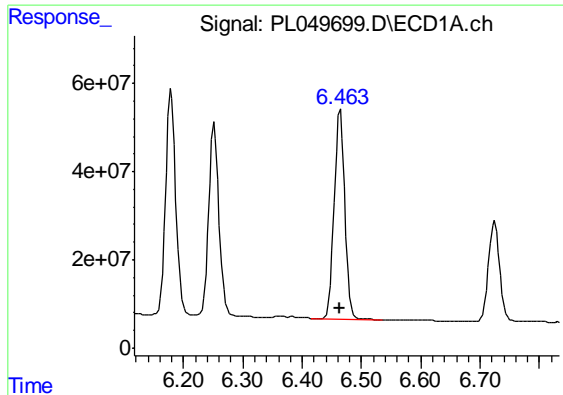
#18 Endrin aldehyde

R.T.: 6.252 min  
Delta R.T.: 0.000 min  
Response: 529498715  
Conc: 44.83 ng/ml



#18 Endrin aldehyde

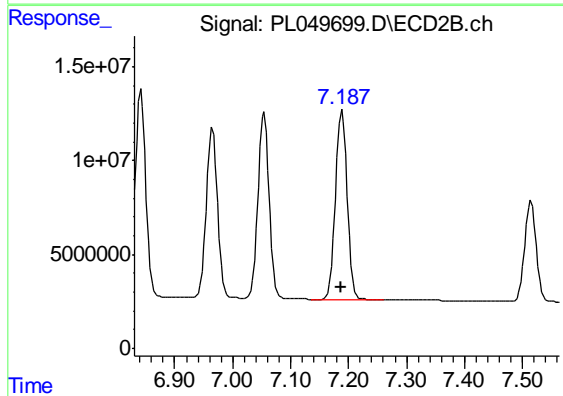
R.T.: 6.966 min  
Delta R.T.: 0.000 min  
Response: 122395686  
Conc: 44.57 ng/ml



#19 Endosulfan Sulfate

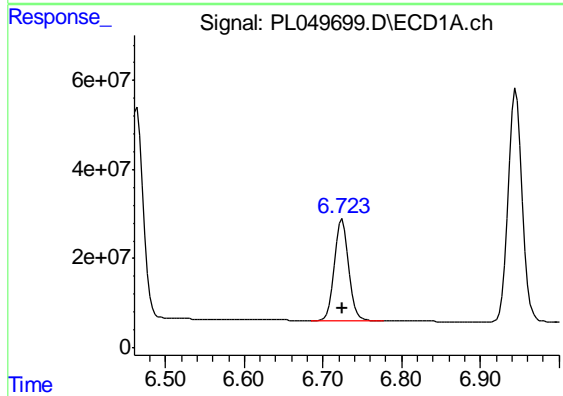
R.T.: 6.464 min  
 Delta R.T.: 0.000 min  
 Response: 587861607  
 Conc: 45.34 ng/ml

Instrument :  
 ECD\_L  
 ClientSampleId :  
 PB120787BS



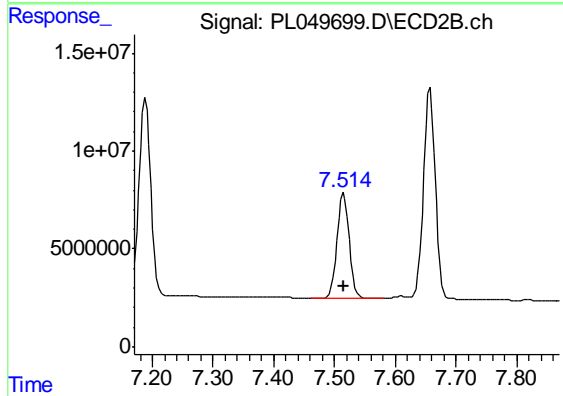
#19 Endosulfan Sulfate

R.T.: 7.189 min  
 Delta R.T.: 0.000 min  
 Response: 136630457  
 Conc: 45.40 ng/ml



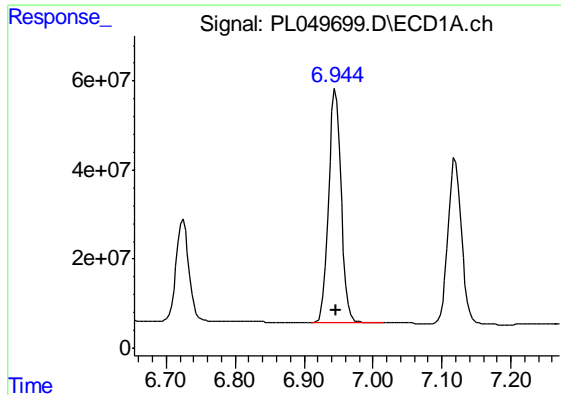
#20 Methoxychlor

R.T.: 6.724 min  
 Delta R.T.: 0.000 min  
 Response: 292273983  
 Conc: 44.84 ng/ml



#20 Methoxychlor

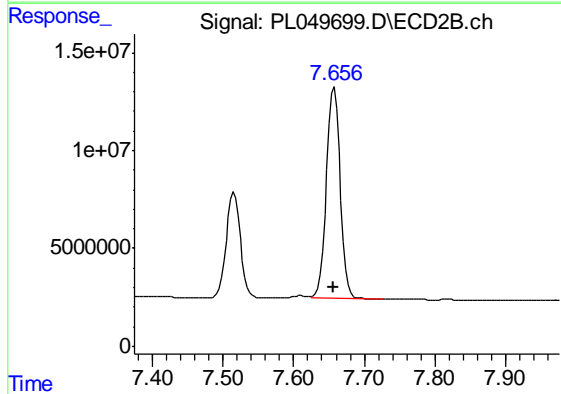
R.T.: 7.515 min  
 Delta R.T.: 0.000 min  
 Response: 74916733  
 Conc: 44.95 ng/ml



#21 Endrin ketone

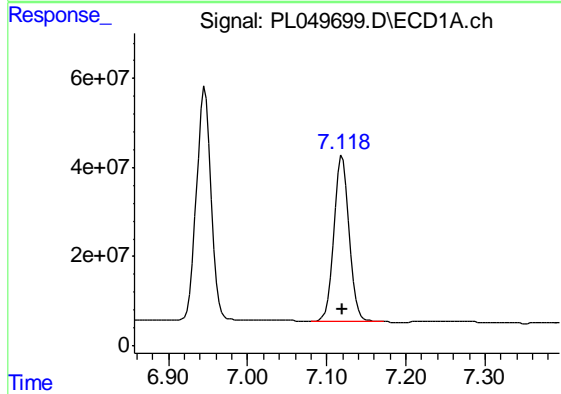
R.T.: 6.946 min  
Delta R.T.: 0.000 min  
Response: 656980999  
Conc: 46.74 ng/ml

Instrument :  
ECD\_L  
ClientSampleId :  
PB120787BS



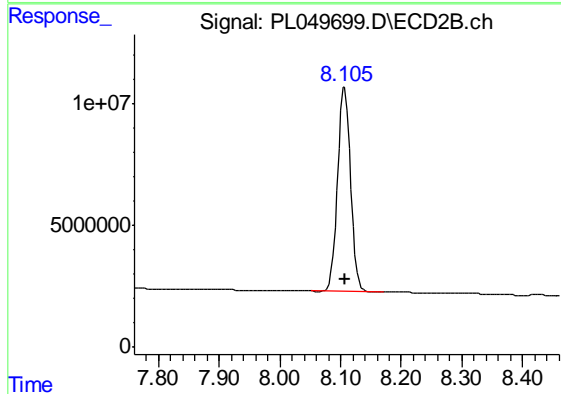
#21 Endrin ketone

R.T.: 7.658 min  
Delta R.T.: 0.000 min  
Response: 146821853  
Conc: 47.12 ng/ml



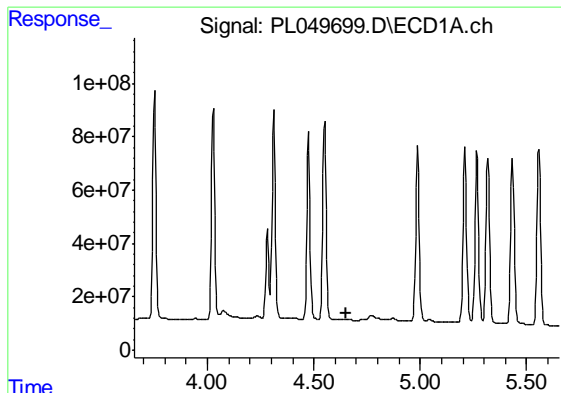
#22 Mirex

R.T.: 7.120 min  
Delta R.T.: 0.000 min  
Response: 507638557  
Conc: 49.11 ng/ml



#22 Mirex

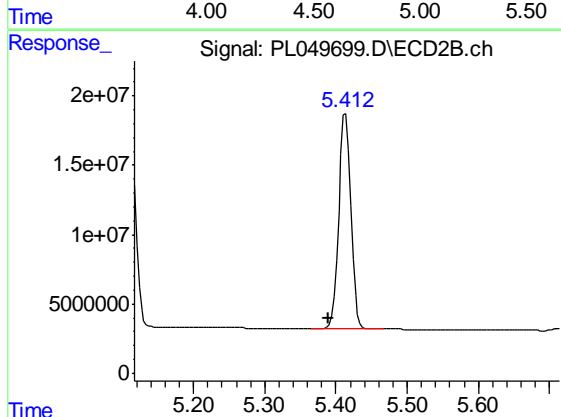
R.T.: 8.107 min  
Delta R.T.: 0.000 min  
Response: 125078953  
Conc: 49.46 ng/ml



#24 Chlordane-2

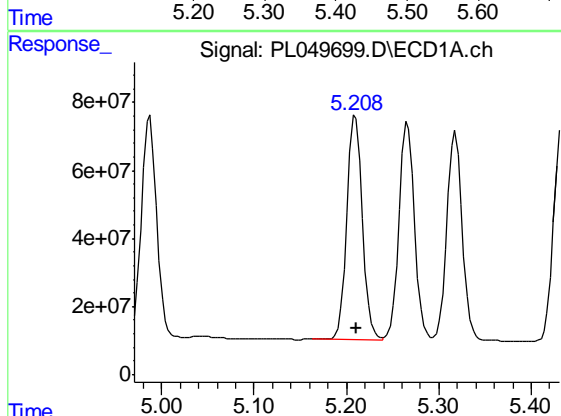
R.T.: 0.000 min  
 Exp R.T. : 4.655 min  
 Response: 0  
 Conc: N.D.

Instrument :  
 ECD\_L  
 ClientSampled :  
 PB120787BS



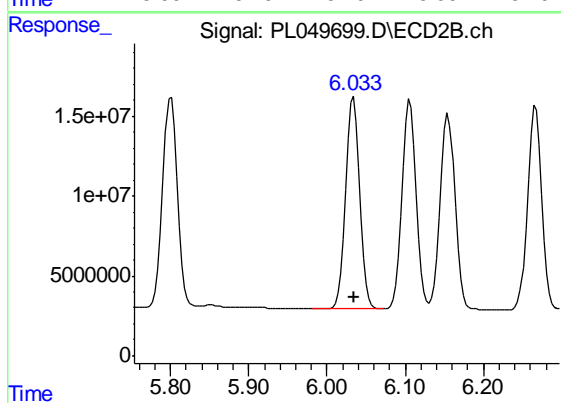
#24 Chlordane-2

R.T.: 5.414 min  
 Delta R.T.: 0.024 min  
 Response: 182863934  
 Conc: 1177.18 ng/ml



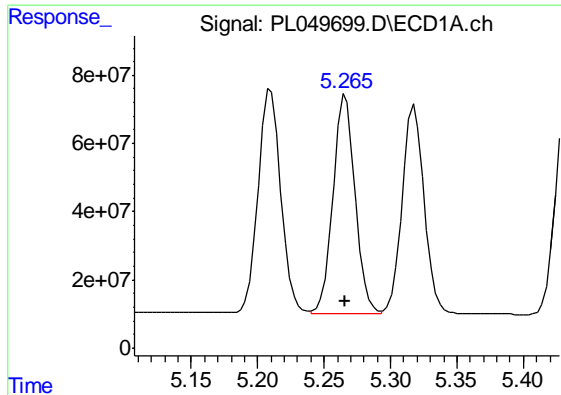
#25 Chlordane-3

R.T.: 5.210 min  
 Delta R.T.: 0.000 min  
 Response: 771274678  
 Conc: 410.64 ng/ml



#25 Chlordane-3

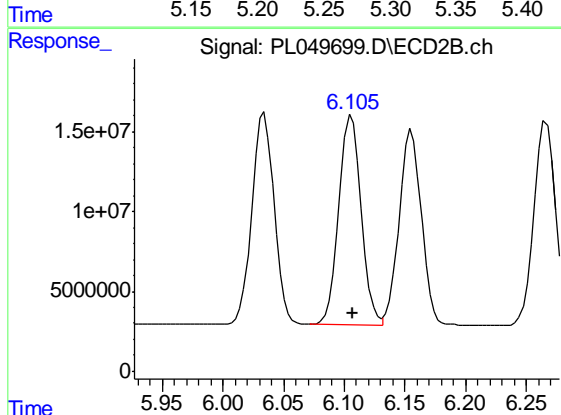
R.T.: 6.034 min  
 Delta R.T.: 0.000 min  
 Response: 168655564  
 Conc: 338.92 ng/ml



#26 Chlordane-4

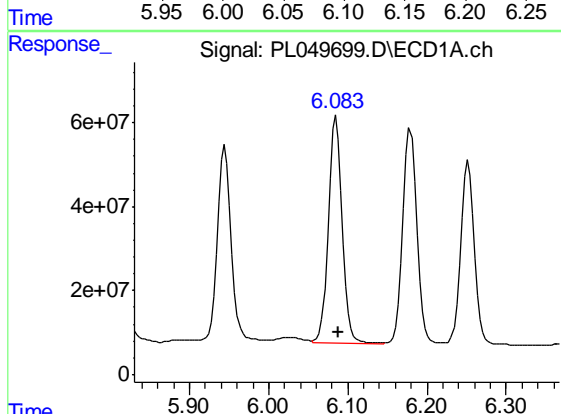
R.T.: 5.266 min  
Delta R.T.: 0.000 min  
Response: 747509826  
Conc: 428.34 ng/ml

Instrument :  
ECD\_L  
ClientSampleId :  
PB120787BS



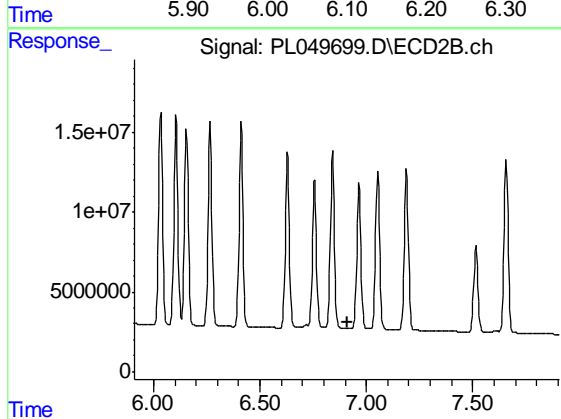
#26 Chlordane-4

R.T.: 6.106 min  
Delta R.T.: -0.001 min  
Response: 167216128  
Conc: 281.35 ng/ml



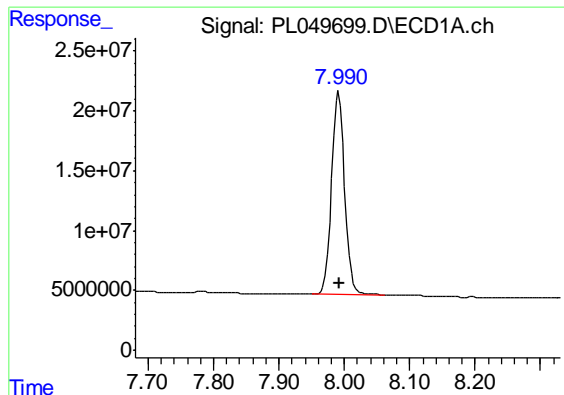
#27 Chlordane-5

R.T.: 6.085 min  
Delta R.T.: -0.003 min  
Response: 663656819  
Conc: 1182.55 ng/ml



#27 Chlordane-5

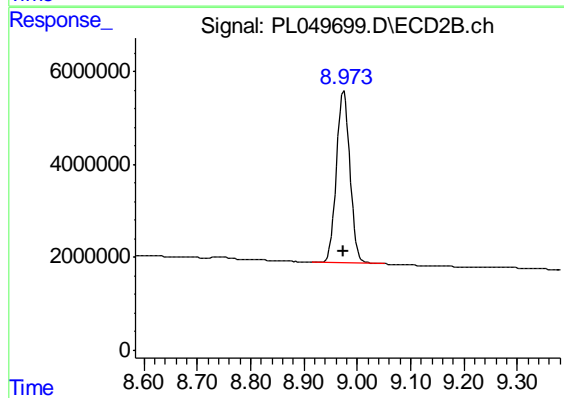
R.T.: 0.000 min  
Exp R.T. : 6.910 min  
Response: 0  
Conc: N.D.



#28 Decachlorobiphenyl

R.T.: 7.992 min  
Delta R.T.: 0.000 min  
Response: 237493373  
Conc: 18.69 ng/ml

Instrument :  
ECD\_L  
ClientSampleId :  
PB120787BS



#28 Decachlorobiphenyl

R.T.: 8.974 min  
Delta R.T.: 0.001 min  
Response: 65191548  
Conc: 19.42 ng/ml