

Data Path : Z:\pestpcbsrv\HPCHEM1\ECD_D\Data\PD062123\
 Data File : PD075958.D
 Signal(s) : Signal #1: ECD1A.ch Signal #2: ECD2B.ch
 Acq On : 20 Jun 2023 18:35
 Operator : AR\AJ
 Sample : PB153470BS
 Misc :
 ALS Vial : 20 Sample Multiplier: 1

Instrument :
 ECD_L
 ClientSampleId :

Integration File signal 1: autoint1.e
 Integration File signal 2: autoint2.e
 Quant Time: Jun 20 22:42:57 2023
 Quant Method : Z:\pestpcbsrv\HPCHEM1\ECD_D\Method\PD060223CLP.M
 Quant Title : GC Extractables
 QLast Update : Fri Jun 02 04:01:43 2023
 Response via : Initial Calibration
 Integrator: ChemStation

Volume Inj. : 1 µl
 Signal #1 Phase : ZB-MR2 Signal #2 Phase: ZB-MR2
 Signal #1 Info : 30M x 0.32mm x0.5 Signal #2 Info : 30M x 0.32mm x 0.25µm

	Compound	RT#1	RT#2	Resp#1	Resp#2	ng/ml	ng/ml

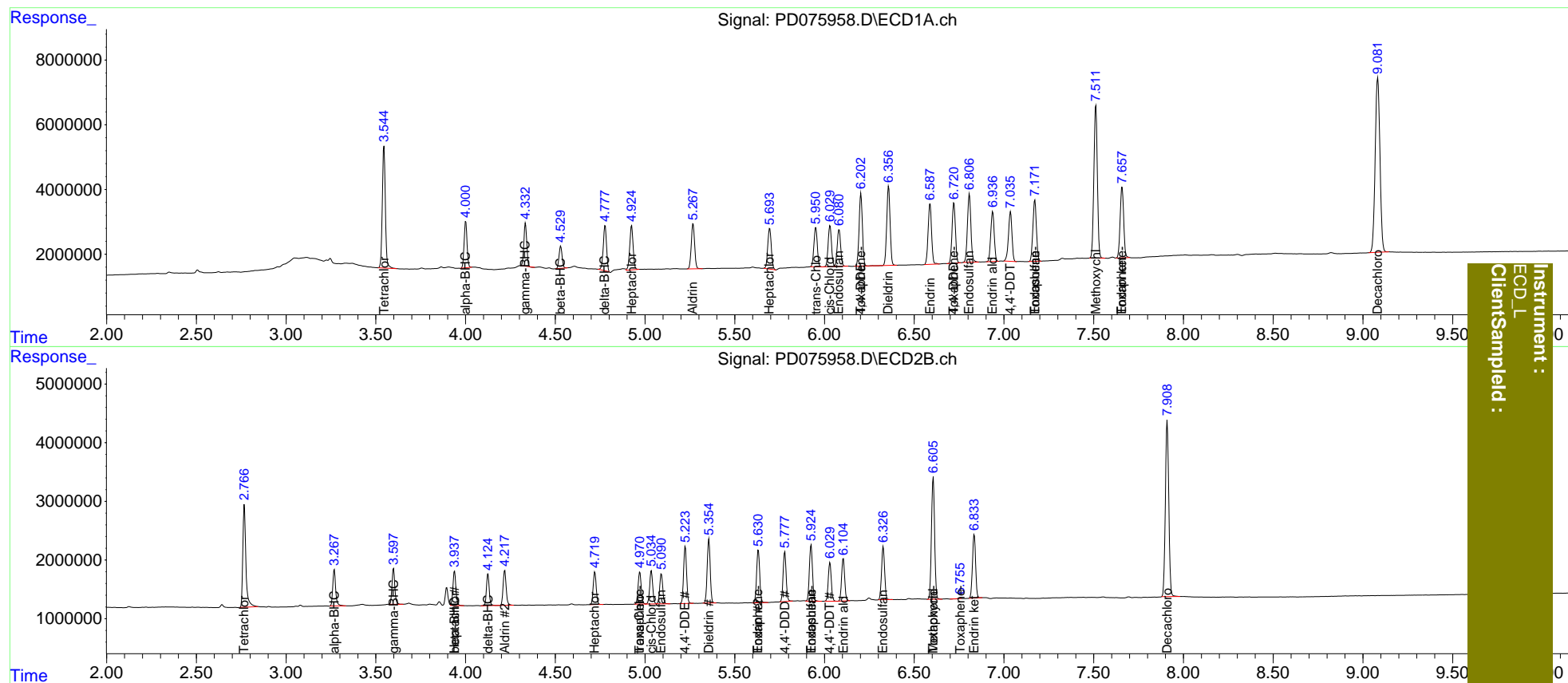
System Monitoring Compounds							
1)	SA Tetrachlo...	3.545	2.767	44145827	20581739	22.083	20.300
27)	SA Decachlor...	9.083	7.910	99643988	39742540	43.445	42.320
Target Compounds							
2)	A alpha-BHC	4.001	3.269	16212185	6961076	4.867	4.654
3)	MA gamma-BHC...	4.334	3.599	14792452	6626366	4.731	4.774
4)	MA Heptachlor	4.926	3.939	18183788	6745022	5.607	4.927
5)	MB Aldrin	5.268	4.219f	18071600	7058948	5.578	4.995
6)	B beta-BHC	4.530	3.939	8182679	6745022	5.790	9.822 #
7)	B delta-BHC	4.778	4.125f	17715686	5827502	5.587	4.020 #
8)	B Heptachlo...	5.695	4.721	17286107	6516950	5.656	4.953
9)	A Endosulfan I	6.081	5.091	15163575	6040619	5.722	5.231
10)	B trans-Chl...	5.952	4.971	15865299	6541660	5.429	5.144
11)	B cis-Chlor...	6.031	5.035	16539401	6723541	5.493	5.159
12)	B 4,4'-DDE	6.203	5.224	28650994	11254645	10.231	9.895
13)	MA Dieldrin	6.357	5.356	31986846	12826208	10.747	9.839
14)	MA Endrin	6.588	5.631	25073373	10900156	9.980	9.495
15)	B Endosulfa...	6.807	5.925	28149826	11568601	11.001	10.298
16)	A 4,4'-DDD	6.721	5.779	24258882	9930298	11.429	11.301
17)	MA 4,4'-DDT	7.037	6.030	20707428	7798996	10.089	9.585
18)	B Endrin al...	6.937	6.105	20681206	8603198	10.001	9.519
19)	B Endosulfa...	7.172	6.327	25683938	10815273	10.752	10.315
20)	A Methoxychlor	7.512	6.606	63819872	25587225	51.179	53.005
21)	B Endrin ke...	7.658	6.834	29860273	13128419	11.281	11.227
22)	Toxaphene-1	6.203f	4.971	28650994	6541660	1401.276	917.996 #
23)	Toxaphene-2	0.000	5.631f	0	10900156	N.D.	1540.607
24)	Toxaphene-3	6.721f	5.925f	24258882	11568601	1269.762	1369.729
25)	Toxaphene-4	7.172	6.606	25683938	25587225	468.075	1238.017 #
26)	Toxaphene-5	7.658f	6.756	29860273	6537	767.180	0.202 #

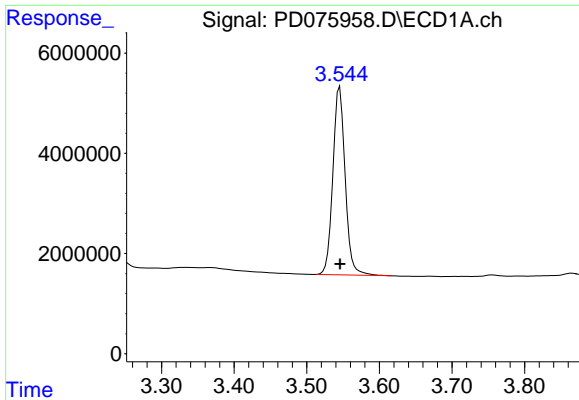
(f)=RT Delta > 1/2 Window (#)=Amounts differ by > 25% (m)=manual int.

Data Path : Z:\pestpcbsrv\HPCHEM1\ECD_D\Data\PD062123\
 Data File : PD075958.D
 Signal(s) : Signal #1: ECD1A.ch Signal #2: ECD2B.ch
 Acq On : 20 Jun 2023 18:35
 Operator : AR\AJ
 Sample : PB153470BS
 Misc :
 ALS Vial : 20 Sample Multiplier: 1

Integration File signal 1: autoint1.e
 Integration File signal 2: autoint2.e
 Quant Time: Jun 20 22:42:57 2023
 Quant Method : Z:\pestpcbsrv\HPCHEM1\ECD_D\Method\PD060223CLP.M
 Quant Title : GC Extractables
 QLast Update : Fri Jun 02 04:01:43 2023
 Response via : Initial Calibration
 Integrator: ChemStation

Volume Inj. : 1 µl
 Signal #1 Phase : ZB-MR1 Signal #2 Phase: ZB-MR2
 Signal #1 Info : 30M x 0.32mm x0.5 Signal #2 Info : 30M x 0.32mm x 0.25µm

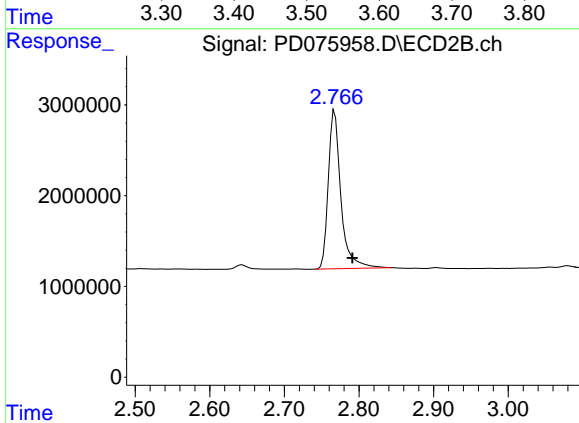




#1 Tetrachloro-m-xylene

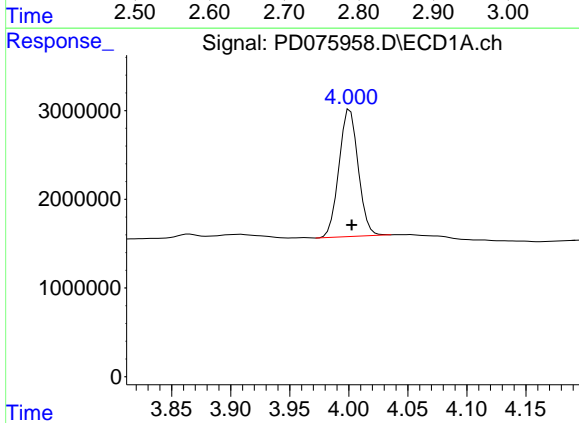
R.T.: 3.545 min
 Delta R.T.: 0.000 min
 Response: 44145827
 Conc: 22.08 ng/ml

Instrument :
 ECD_L
 ClientSampleId :



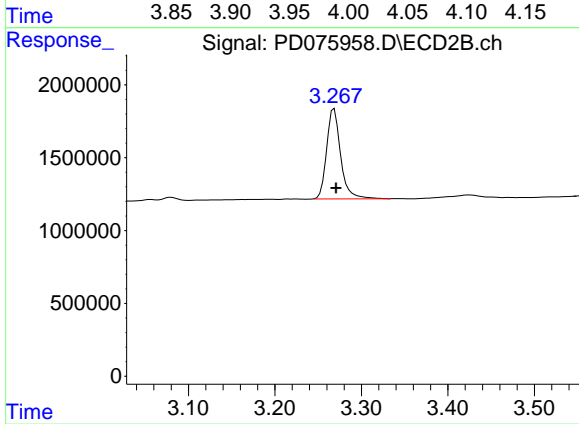
#1 Tetrachloro-m-xylene

R.T.: 2.767 min
 Delta R.T.: -0.024 min
 Response: 20581739
 Conc: 20.30 ng/ml



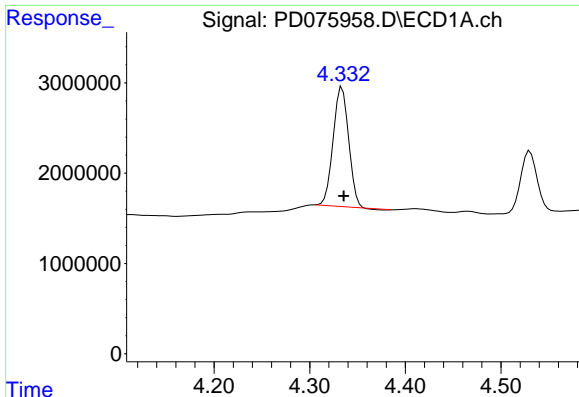
#2 alpha-BHC

R.T.: 4.001 min
 Delta R.T.: -0.001 min
 Response: 16212185
 Conc: 4.87 ng/ml



#2 alpha-BHC

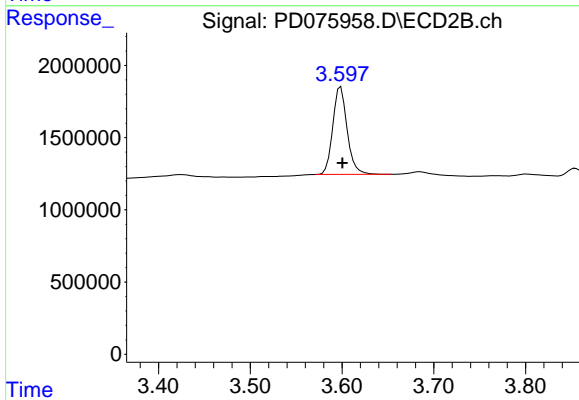
R.T.: 3.269 min
 Delta R.T.: -0.002 min
 Response: 6961076
 Conc: 4.65 ng/ml



#3 gamma-BHC (Lindane)

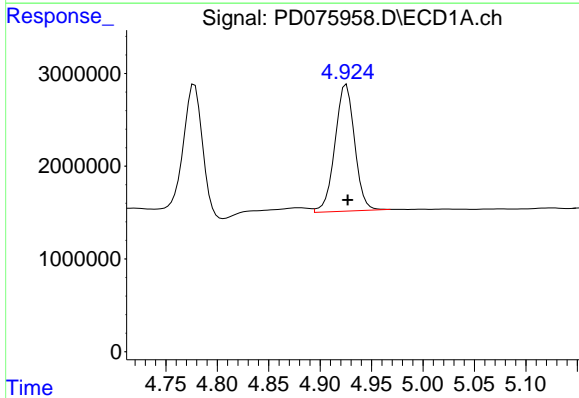
R.T.: 4.334 min
 Delta R.T.: -0.002 min
 Response: 14792452
 Conc: 4.73 ng/ml

Instrument :
 ECD_L
 ClientSampleId :



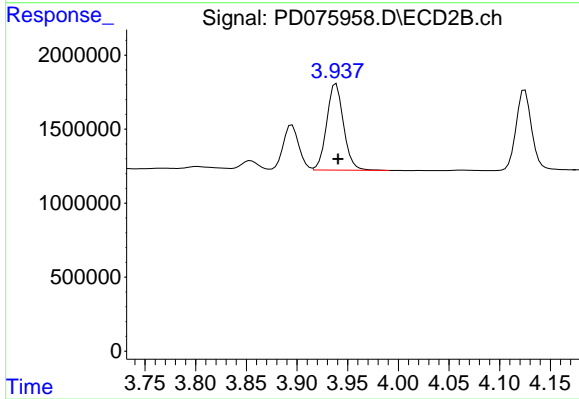
#3 gamma-BHC (Lindane)

R.T.: 3.599 min
 Delta R.T.: -0.002 min
 Response: 6626366
 Conc: 4.77 ng/ml



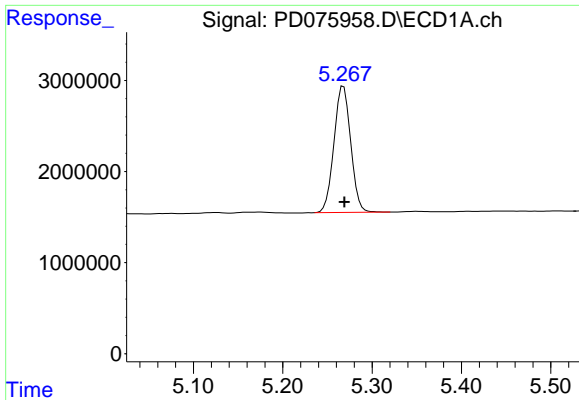
#4 Heptachlor

R.T.: 4.926 min
 Delta R.T.: -0.001 min
 Response: 18183788
 Conc: 5.61 ng/ml



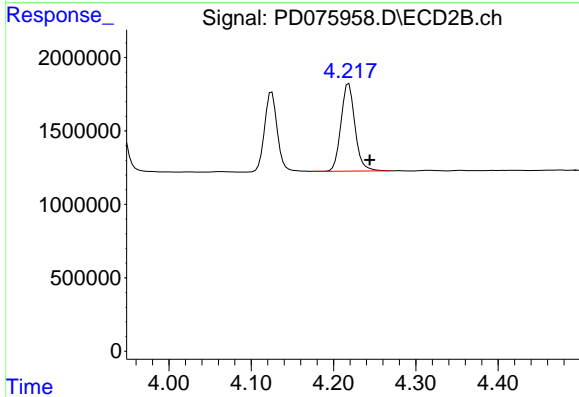
#4 Heptachlor

R.T.: 3.939 min
 Delta R.T.: -0.002 min
 Response: 6745022
 Conc: 4.93 ng/ml

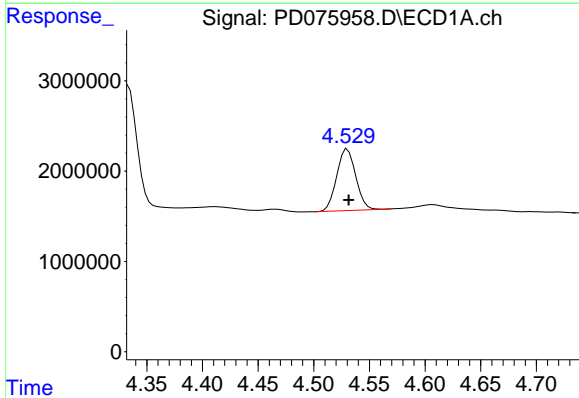


#5 Aldrin
 R.T.: 5.268 min
 Delta R.T.: -0.001 min
 Response: 18071600
 Conc: 5.58 ng/ml

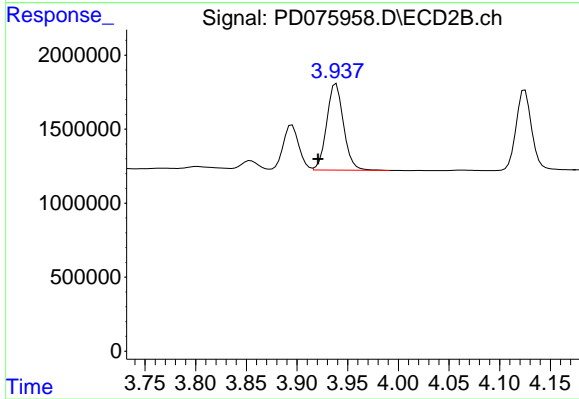
Instrument :
 ECD_L
 ClientSampleId :



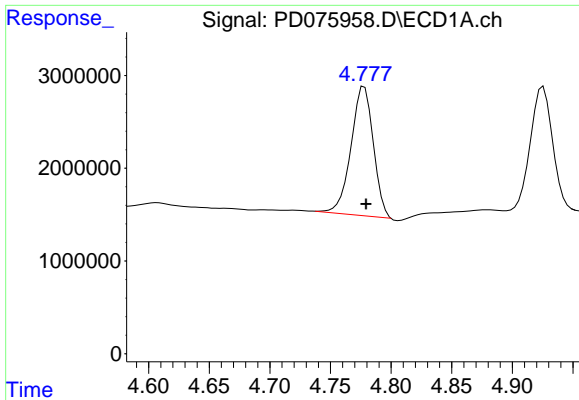
#5 Aldrin
 R.T.: 4.219 min
 Delta R.T.: -0.026 min
 Response: 7058948
 Conc: 5.00 ng/ml



#6 beta-BHC
 R.T.: 4.530 min
 Delta R.T.: -0.001 min
 Response: 8182679
 Conc: 5.79 ng/ml



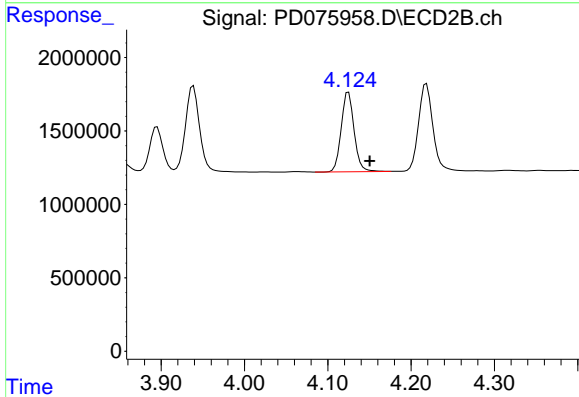
#6 beta-BHC
 R.T.: 3.939 min
 Delta R.T.: 0.018 min
 Response: 6745022
 Conc: 9.82 ng/ml



#7 delta-BHC

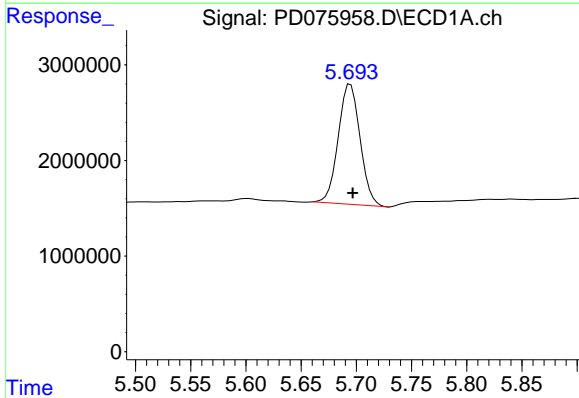
R.T.: 4.778 min
 Delta R.T.: -0.001 min
 Response: 17715686
 Conc: 5.59 ng/ml

Instrument :
 ECD_L
 ClientSampleId :



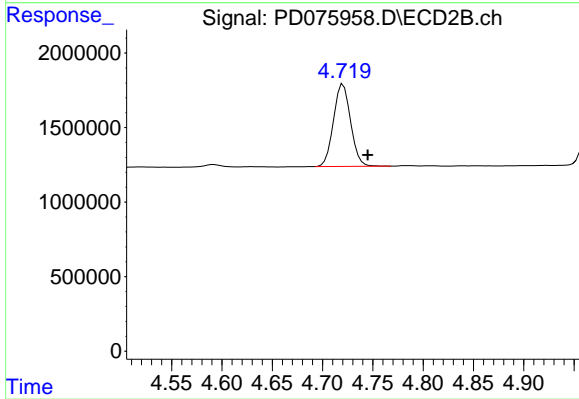
#7 delta-BHC

R.T.: 4.125 min
 Delta R.T.: -0.026 min
 Response: 5827502
 Conc: 4.02 ng/ml



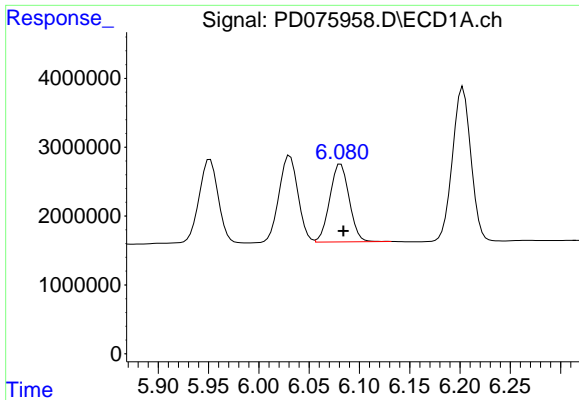
#8 Heptachlor epoxide

R.T.: 5.695 min
 Delta R.T.: -0.002 min
 Response: 17286107
 Conc: 5.66 ng/ml



#8 Heptachlor epoxide

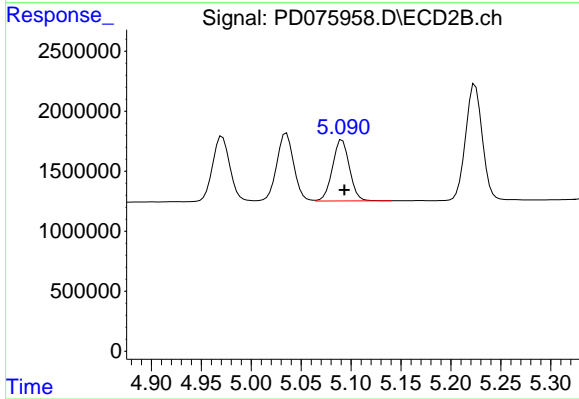
R.T.: 4.721 min
 Delta R.T.: -0.024 min
 Response: 6516950
 Conc: 4.95 ng/ml



#9 Endosulfan I

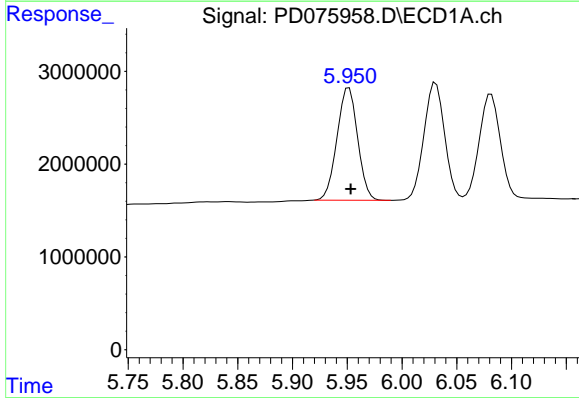
R.T.: 6.081 min
 Delta R.T.: -0.002 min
 Response: 15163575
 Conc: 5.72 ng/ml

Instrument :
 ECD_L
 ClientSampleId :



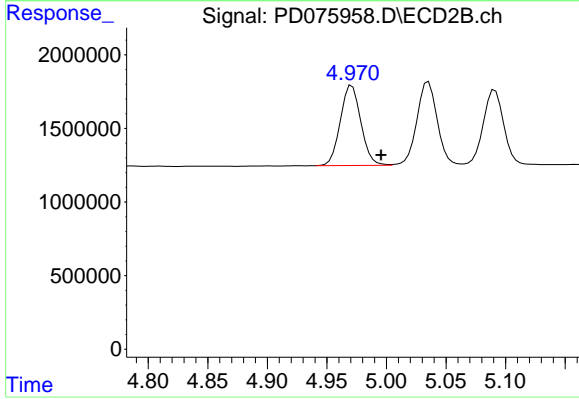
#9 Endosulfan I

R.T.: 5.091 min
 Delta R.T.: -0.002 min
 Response: 6040619
 Conc: 5.23 ng/ml



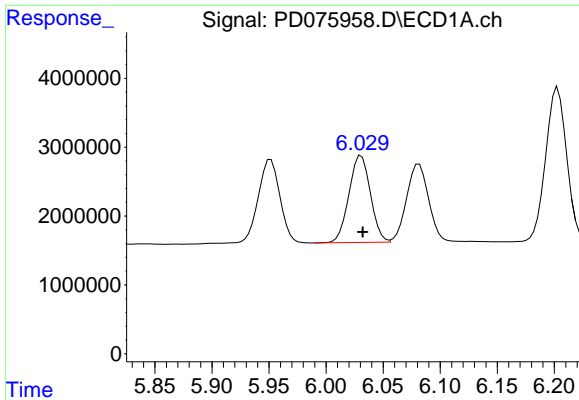
#10 trans-Chlordane

R.T.: 5.952 min
 Delta R.T.: -0.002 min
 Response: 15865299
 Conc: 5.43 ng/ml



#10 trans-Chlordane

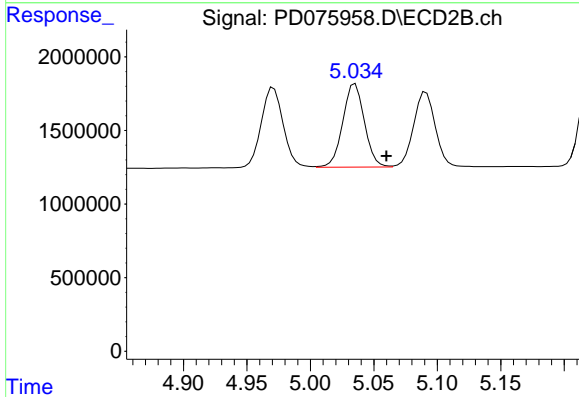
R.T.: 4.971 min
 Delta R.T.: -0.024 min
 Response: 6541660
 Conc: 5.14 ng/ml



#11 cis-Chlordane

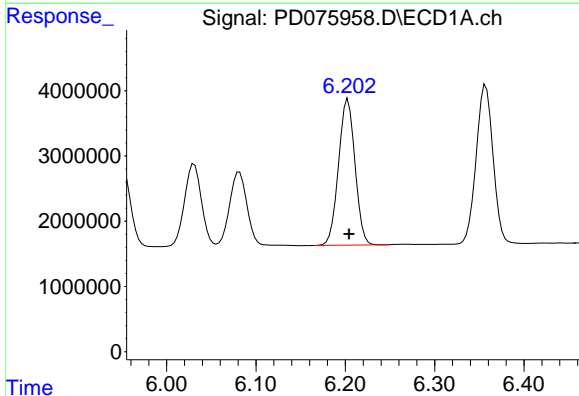
R.T.: 6.031 min
 Delta R.T.: -0.001 min
 Response: 16539401
 Conc: 5.49 ng/ml

Instrument :
 ECD_L
 ClientSampleId :



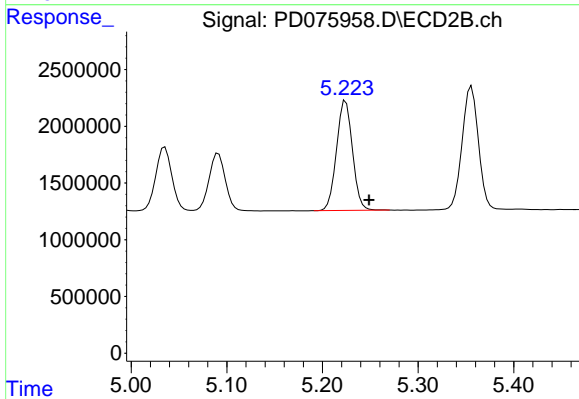
#11 cis-Chlordane

R.T.: 5.035 min
 Delta R.T.: -0.025 min
 Response: 6723541
 Conc: 5.16 ng/ml



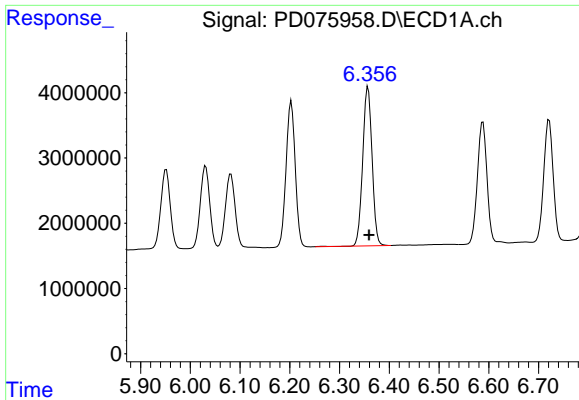
#12 4,4'-DDE

R.T.: 6.203 min
 Delta R.T.: -0.001 min
 Response: 28650994
 Conc: 10.23 ng/ml



#12 4,4'-DDE

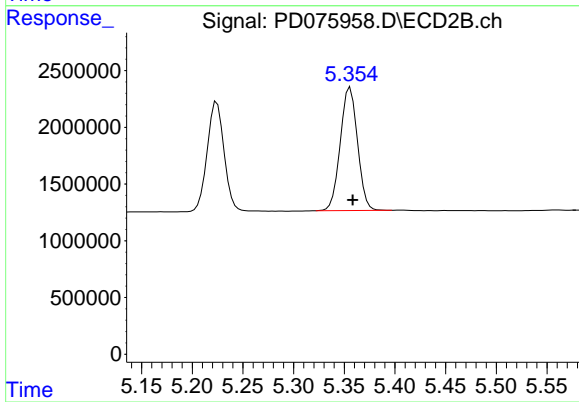
R.T.: 5.224 min
 Delta R.T.: -0.024 min
 Response: 11254645
 Conc: 9.89 ng/ml



#13 Dieldrin

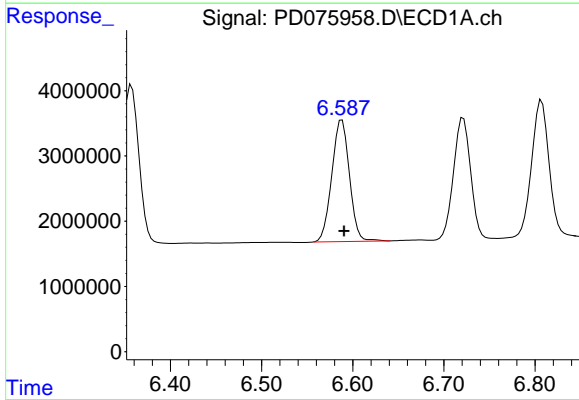
R.T.: 6.357 min
 Delta R.T.: -0.002 min
 Response: 31986846
 Conc: 10.75 ng/ml

Instrument :
 ECD_L
 ClientSampleId :



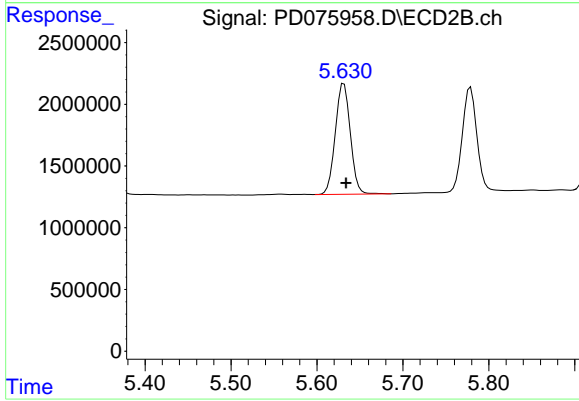
#13 Dieldrin

R.T.: 5.356 min
 Delta R.T.: -0.003 min
 Response: 12826208
 Conc: 9.84 ng/ml



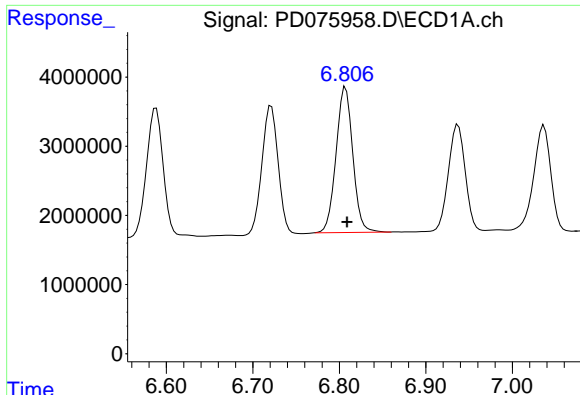
#14 Endrin

R.T.: 6.588 min
 Delta R.T.: -0.002 min
 Response: 25073373
 Conc: 9.98 ng/ml



#14 Endrin

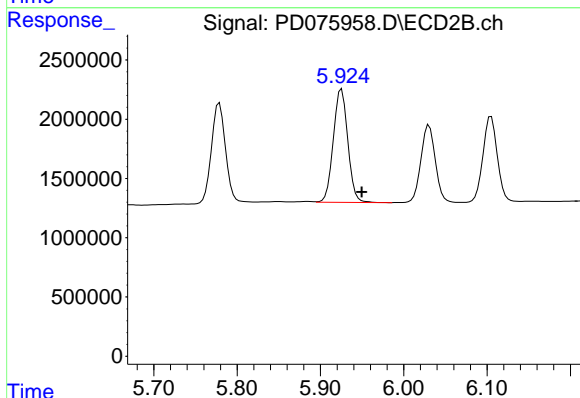
R.T.: 5.631 min
 Delta R.T.: -0.003 min
 Response: 10900156
 Conc: 9.49 ng/ml



#15 Endosulfan II

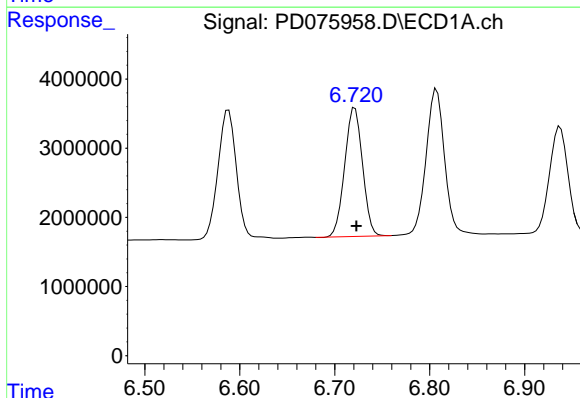
R.T.: 6.807 min
 Delta R.T.: -0.001 min
 Response: 28149826
 Conc: 11.00 ng/ml

Instrument :
 ECD_L
 ClientSampleId :



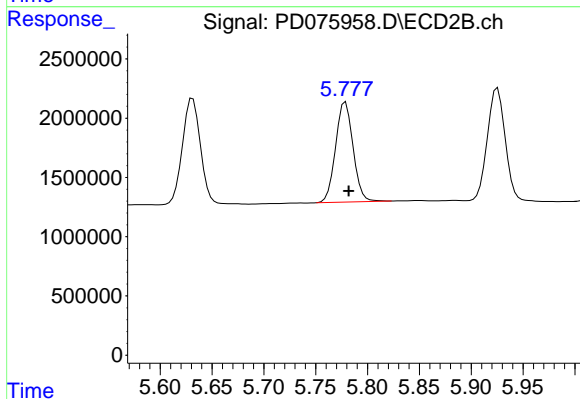
#15 Endosulfan II

R.T.: 5.925 min
 Delta R.T.: -0.024 min
 Response: 11568601
 Conc: 10.30 ng/ml



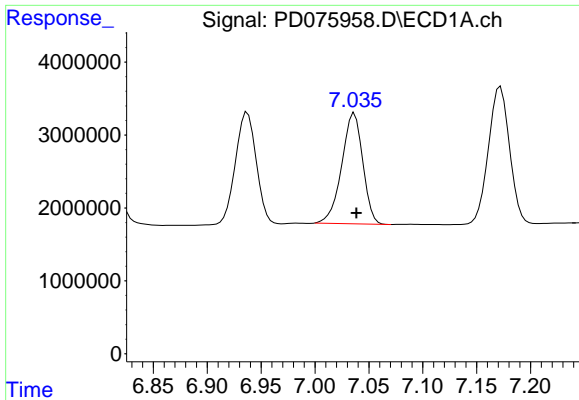
#16 4,4'-DDD

R.T.: 6.721 min
 Delta R.T.: -0.002 min
 Response: 24258882
 Conc: 11.43 ng/ml



#16 4,4'-DDD

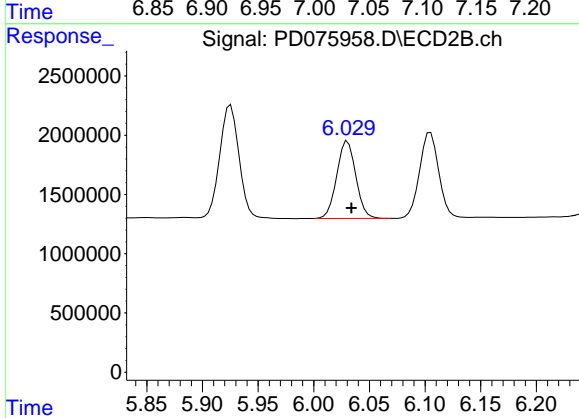
R.T.: 5.779 min
 Delta R.T.: -0.003 min
 Response: 9930298
 Conc: 11.30 ng/ml



#17 4,4'-DDT

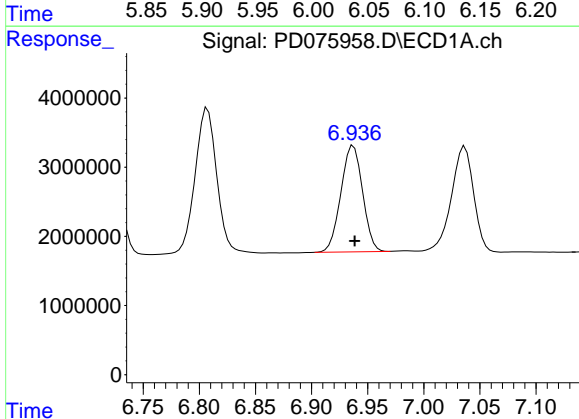
R.T.: 7.037 min
 Delta R.T.: -0.002 min
 Response: 20707428
 Conc: 10.09 ng/ml

Instrument :
 ECD_L
 ClientSampleId :



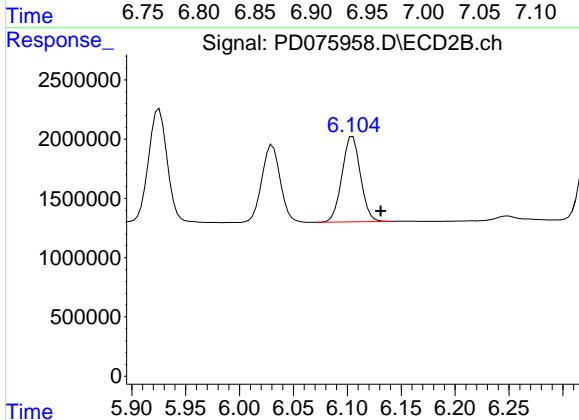
#17 4,4'-DDT

R.T.: 6.030 min
 Delta R.T.: -0.003 min
 Response: 7798996
 Conc: 9.59 ng/ml



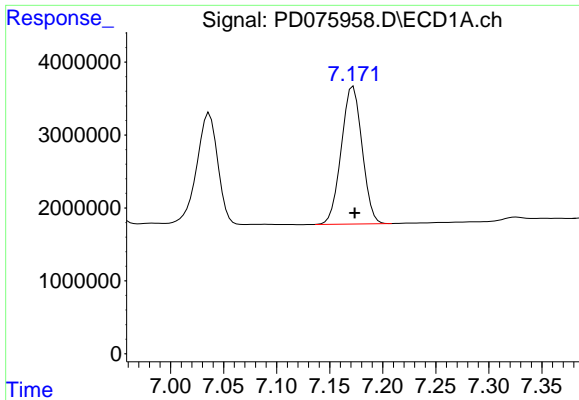
#18 Endrin aldehyde

R.T.: 6.937 min
 Delta R.T.: -0.001 min
 Response: 20681206
 Conc: 10.00 ng/ml



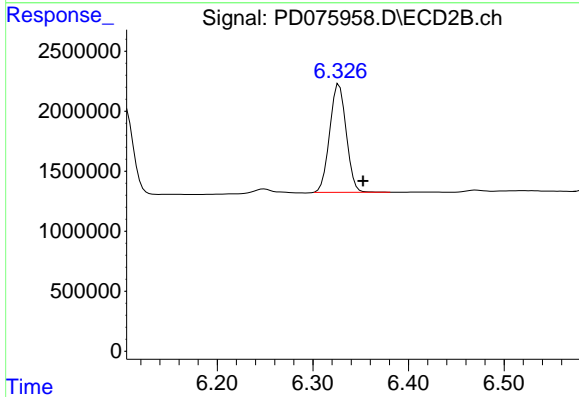
#18 Endrin aldehyde

R.T.: 6.105 min
 Delta R.T.: -0.026 min
 Response: 8603198
 Conc: 9.52 ng/ml

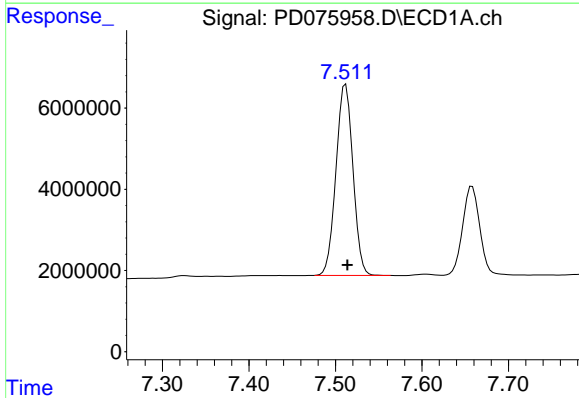


#19 Endosulfan Sulfate
 R.T.: 7.172 min
 Delta R.T.: -0.002 min
 Response: 25683938
 Conc: 10.75 ng/ml

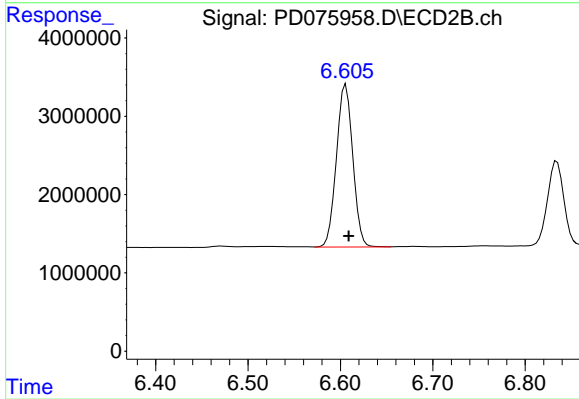
Instrument :
 ECD_L
 ClientSampleId :



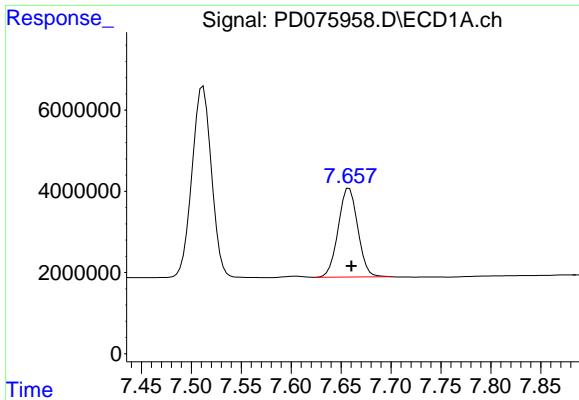
#19 Endosulfan Sulfate
 R.T.: 6.327 min
 Delta R.T.: -0.025 min
 Response: 10815273
 Conc: 10.32 ng/ml



#20 Methoxychlor
 R.T.: 7.512 min
 Delta R.T.: -0.002 min
 Response: 63819872
 Conc: 51.18 ng/ml



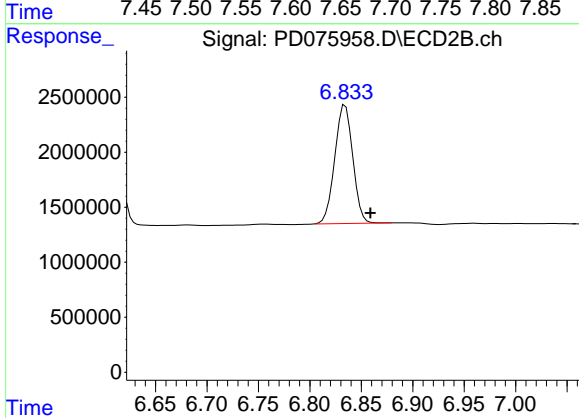
#20 Methoxychlor
 R.T.: 6.606 min
 Delta R.T.: -0.003 min
 Response: 25587225
 Conc: 53.01 ng/ml



#21 Endrin ketone

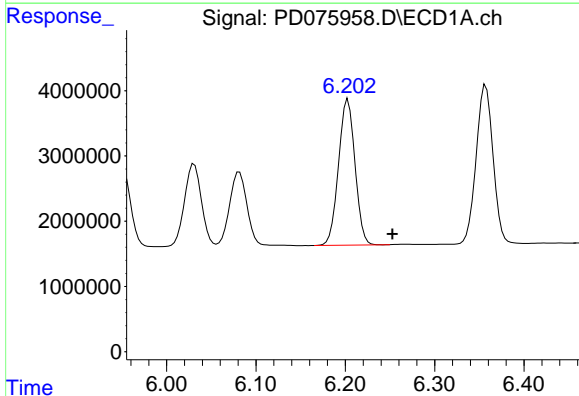
R.T.: 7.658 min
 Delta R.T.: -0.002 min
 Response: 29860273
 Conc: 11.28 ng/ml

Instrument :
 ECD_L
 ClientSampleId :



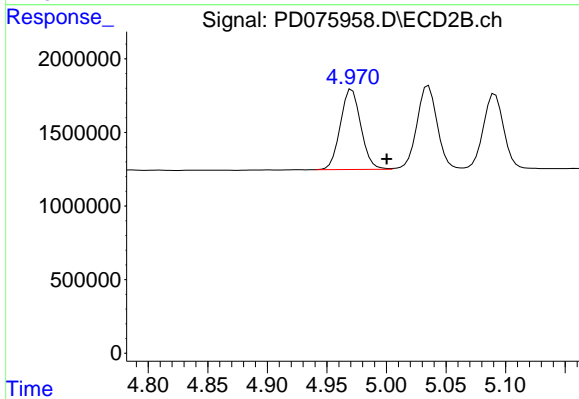
#21 Endrin ketone

R.T.: 6.834 min
 Delta R.T.: -0.024 min
 Response: 13128419
 Conc: 11.23 ng/ml



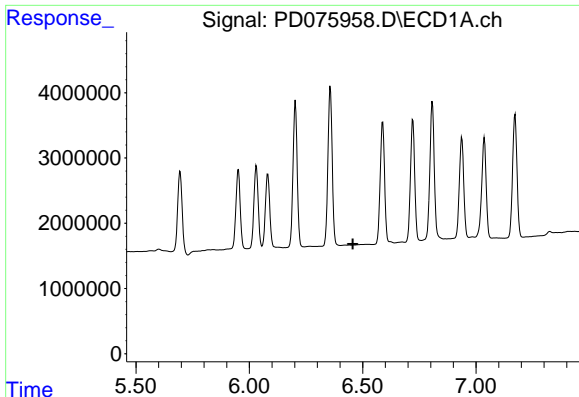
#22 Toxaphene-1

R.T.: 6.203 min
 Delta R.T.: -0.050 min
 Response: 28650994
 Conc: 1401.28 ng/ml



#22 Toxaphene-1

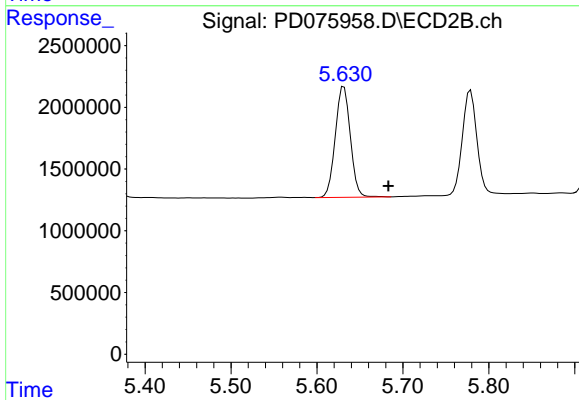
R.T.: 4.971 min
 Delta R.T.: -0.029 min
 Response: 6541660
 Conc: 918.00 ng/ml



#23 Toxaphene-2

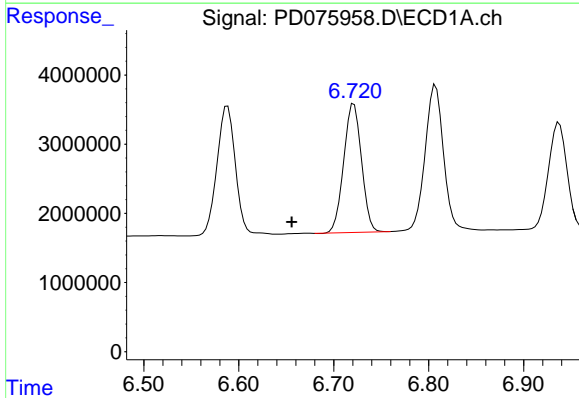
R.T.: 0.000 min
 Exp R.T.: 6.457 min
 Response: 0
 Conc: N.D.

Instrument :
 ECD_L
 ClientSampleId :



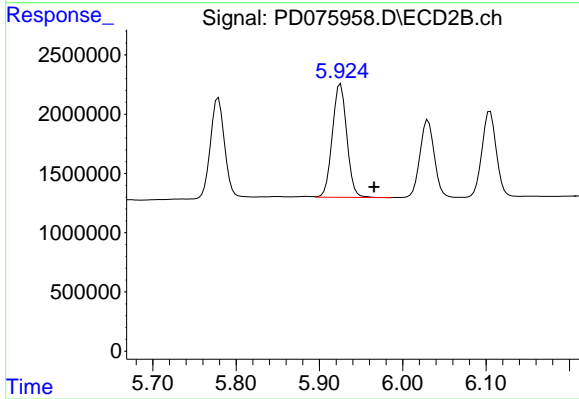
#23 Toxaphene-2

R.T.: 5.631 min
 Delta R.T.: -0.052 min
 Response: 10900156
 Conc: 1540.61 ng/ml



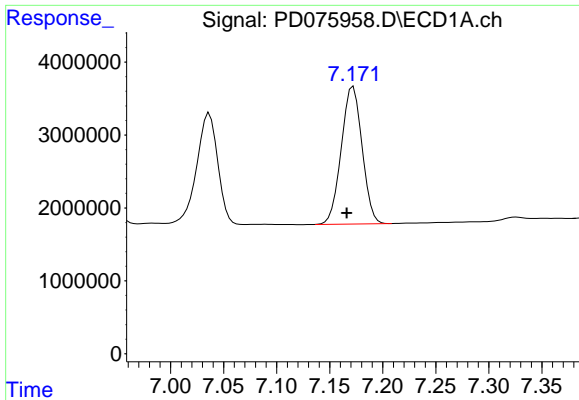
#24 Toxaphene-3

R.T.: 6.721 min
 Delta R.T.: 0.066 min
 Response: 24258882
 Conc: 1269.76 ng/ml



#24 Toxaphene-3

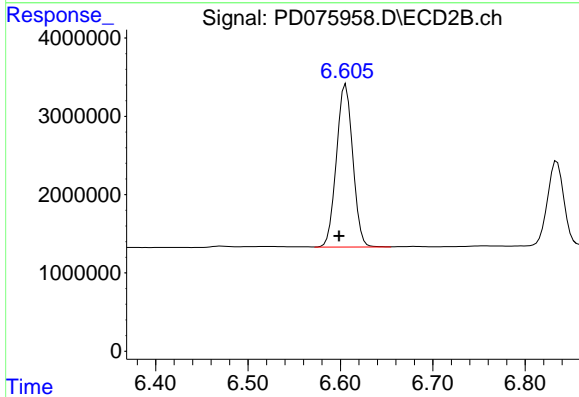
R.T.: 5.925 min
 Delta R.T.: -0.040 min
 Response: 11568601
 Conc: 1369.73 ng/ml



#25 Toxaphene-4

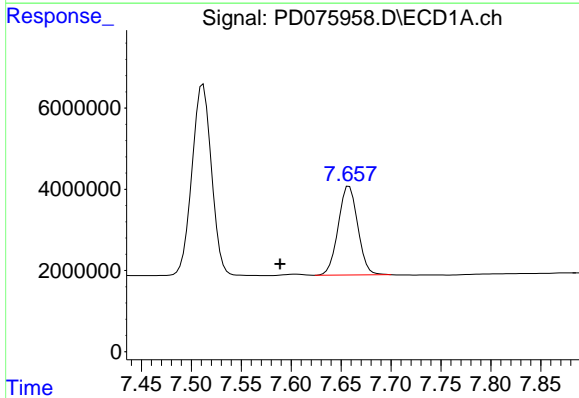
R.T.: 7.172 min
 Delta R.T.: 0.006 min
 Response: 25683938
 Conc: 468.07 ng/ml

Instrument :
 ECD_L
 ClientSampleId :



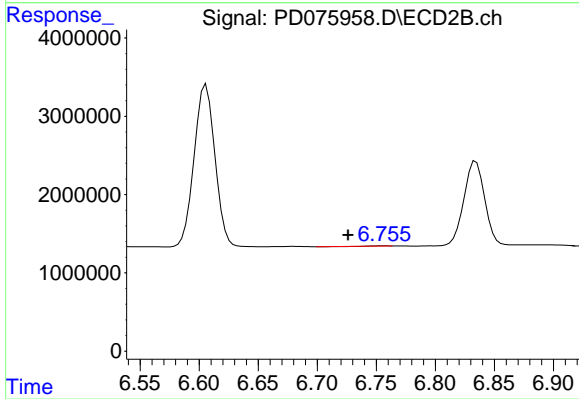
#25 Toxaphene-4

R.T.: 6.606 min
 Delta R.T.: 0.007 min
 Response: 25587225
 Conc: 1238.02 ng/ml



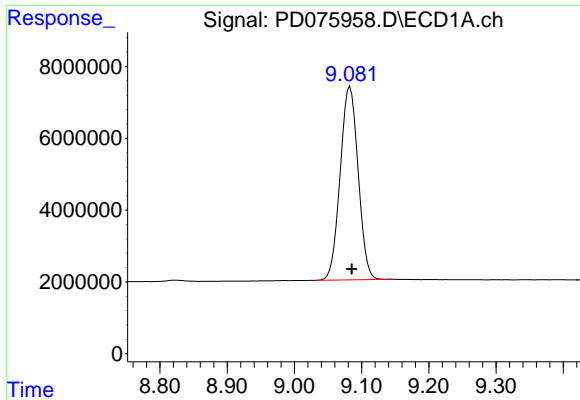
#26 Toxaphene-5

R.T.: 7.658 min
 Delta R.T.: 0.069 min
 Response: 29860273
 Conc: 767.18 ng/ml



#26 Toxaphene-5

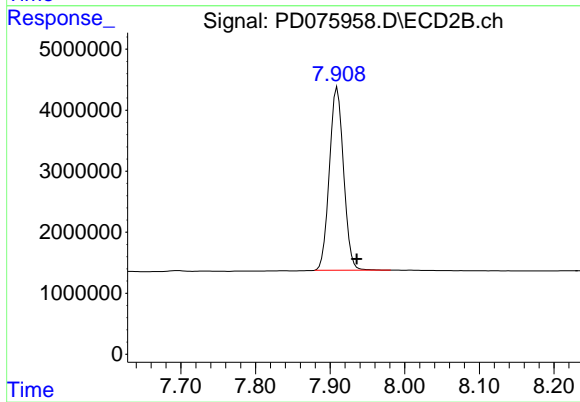
R.T.: 6.756 min
 Delta R.T.: 0.030 min
 Response: 6537
 Conc: 0.20 ng/ml



#27 Decachlorobiphenyl

R.T.: 9.083 min
Delta R.T.: -0.003 min
Response: 99643988
Conc: 43.45 ng/ml

Instrument :
ECD_L
ClientSampleId :



#27 Decachlorobiphenyl

R.T.: 7.910 min
Delta R.T.: -0.026 min
Response: 39742540
Conc: 42.32 ng/ml