

Data Path : Z:\pestpcbsrv\HPCHEM1\ECD\_L\Data\PL062023\  
 Data File : PL083572.D  
 Signal(s) : Signal #1: ECD1A.ch Signal #2: ECD2B.ch  
 Acq On : 20 Jun 2023 12:42  
 Operator : AR\AJ  
 Sample : PTOXCCC500  
 Misc :  
 ALS Vial : 5 Sample Multiplier: 1

**Instrument :**  
 ECD\_L  
**ClientSampleId :**  
 PTOXCCC500

**Manual Integrations**  
**APPROVED**

Reviewed By :Abdul Mirza 06/21/2023  
 Supervised By :Ankita Jodhani 06/21/2023

Integration File signal 1: autoint1.e  
 Integration File signal 2: autoint2.e  
 Quant Time: Jun 21 08:11:25 2023  
 Quant Method : Z:\pestpcbsrv\HPCHEM1\ECD\_L\methods\LTX061723.M  
 Quant Title : GC Extractables  
 QLast Update : Mon Jun 19 08:58:12 2023  
 Response via : Initial Calibration  
 Integrator: ChemStation

Volume Inj. : 2 µl  
 Signal #1 Phase : Rtx-CLPesticide 1 Signal #2 Phase: Rtx-CLPesticide 1  
 Signal #1 Info : 30M x 0.32mm x0.3 Signal #2 Info : 30M x 0.32mm x 0.25µm

Compound	RT#1	RT#2	Resp#1	Resp#2	ng/ml	ng/ml
-----						
System Monitoring Compounds						
1) SA Tetrachlo...	3.460	2.754	91520607	100.8E6	42.615	44.413
7) SA Decachlor...	8.997	7.964	84057721	103.2E6	42.435	43.025
Target Compounds						
2) Toxaphene-1	6.169	5.344	5643774	7146165	415.207	524.369 #
3) Toxaphene-2	6.990	5.510	27151988	5464009	436.052m	471.831
4) Toxaphene-3	7.081	5.989	19576145	8707893	436.787	477.002
5) Toxaphene-4	7.179	6.627	11309825	22955109	439.315	447.060
6) Toxaphene-5	7.502	6.756	15717501	31336714	439.548m	436.889
-----						

(f)=RT Delta > 1/2 Window (#)=Amounts differ by > 25% (m)=manual int.

Data Path : Z:\pestpcbsrv\HPCHEM1\ECD\_L\Data\PL062023\  
 Data File : PL083572.D  
 Signal(s) : Signal #1: ECD1A.ch Signal #2: ECD2B.ch  
 Acq On : 20 Jun 2023 12:42  
 Operator : AR\AJ  
 Sample : PTOXCCC500  
 Misc :  
 ALS Vial : 5 Sample Multiplier: 1

**Instrument :**

ECD\_L

**ClientSampleId :**

PTOXCCC500

**Manual Integrations**

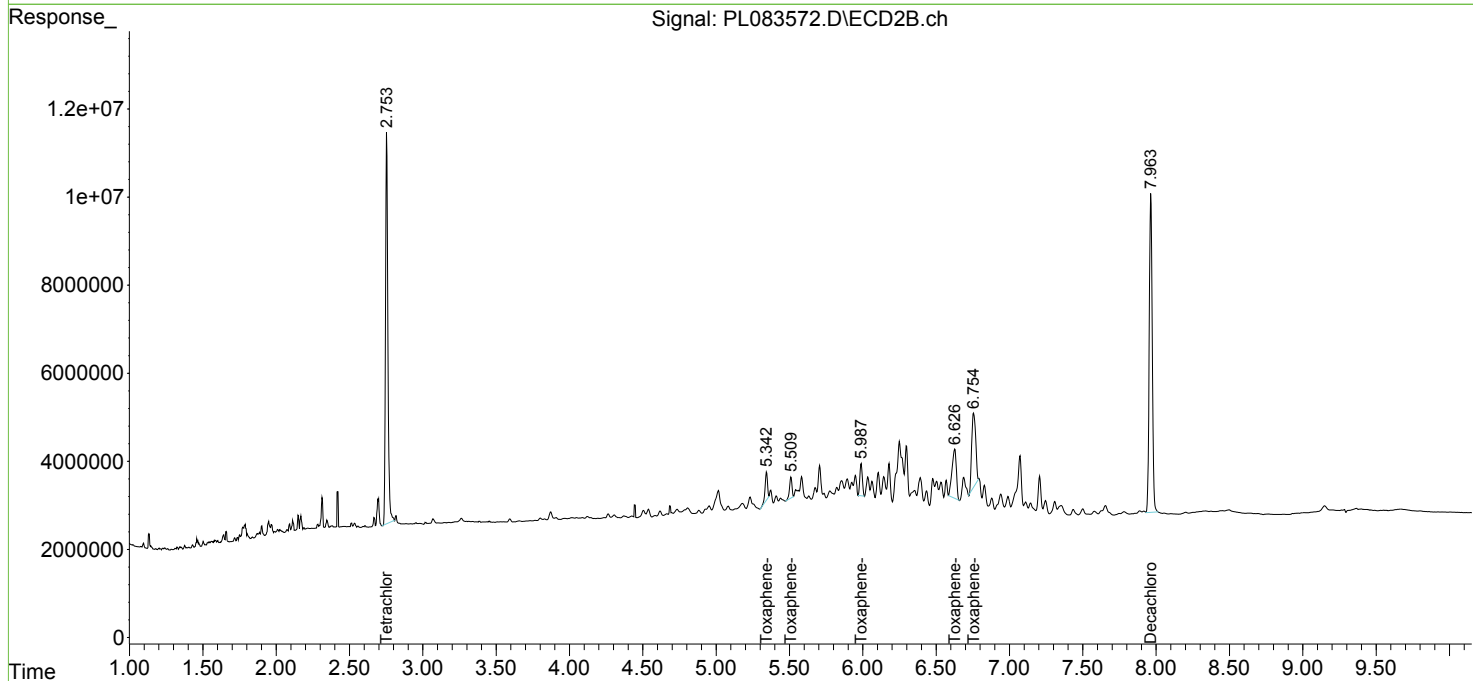
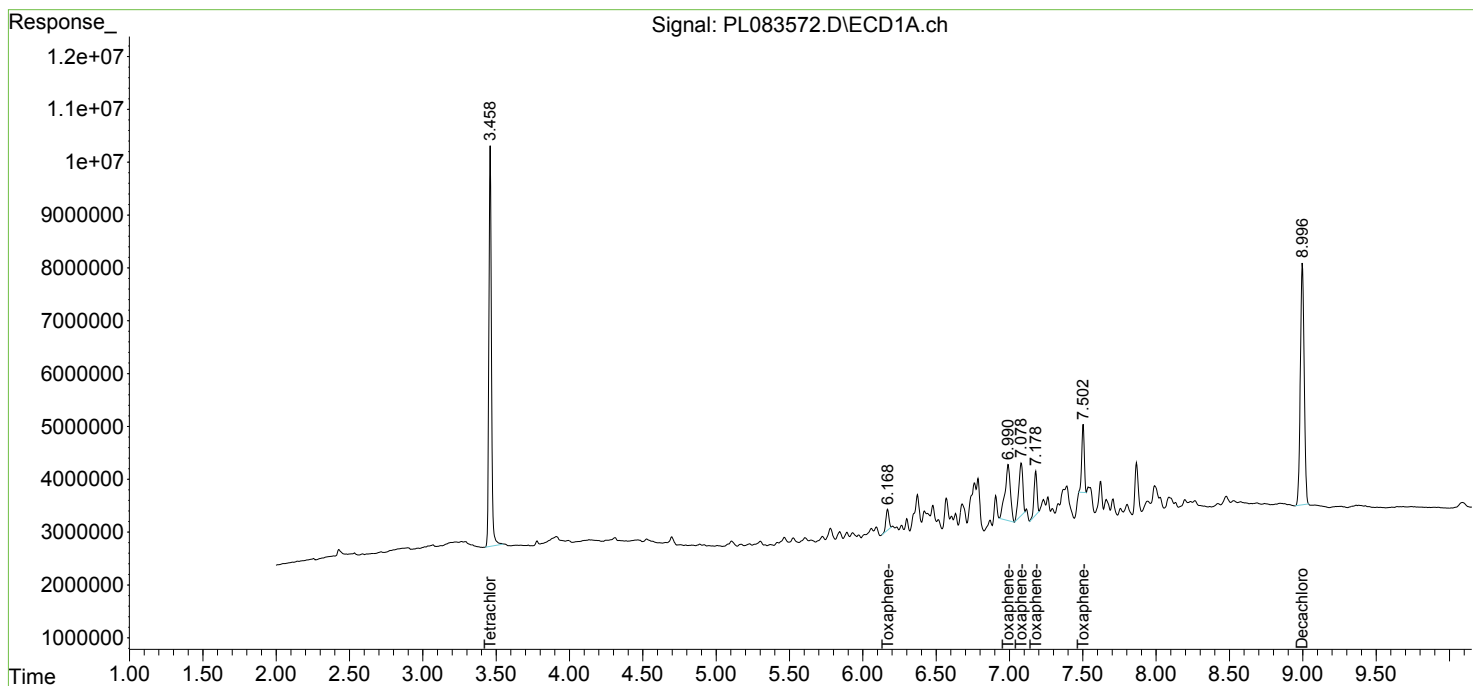
**APPROVED**

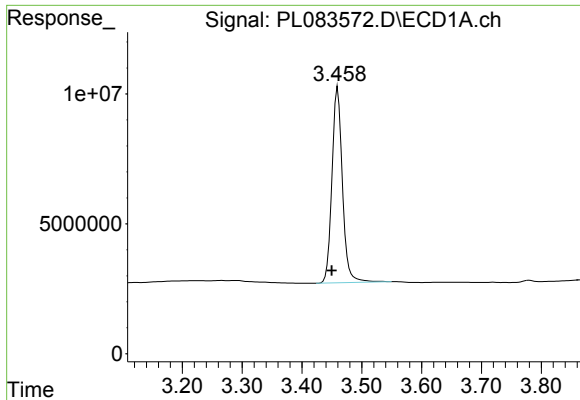
Reviewed By :Abdul Mirza 06/21/2023

Supervised By :Ankita Jodhani 06/21/2023

Integration File signal 1: autoint1.e  
 Integration File signal 2: autoint2.e  
 Quant Time: Jun 21 08:11:25 2023  
 Quant Method : Z:\pestpcbsrv\HPCHEM1\ECD\_L\methods\LTX061723.M  
 Quant Title : GC Extractables  
 QLast Update : Mon Jun 19 08:58:12 2023  
 Response via : Initial Calibration  
 Integrator: ChemStation

Volume Inj. : 2 µl  
 Signal #1 Phase : Rtx-CLPesticide 1 Signal #2 Phase: Rtx-CLPesticide 1  
 Signal #1 Info : 30M x 0.32mm x0.3 Signal #2 Info : 30M x 0.32mm x 0.25µm





#1 Tetrachloro-m-xylene

R.T.: 3.460 min  
 Delta R.T.: 0.010 min  
 Response: 91520607  
 Conc: 42.61 ng/ml

Instrument :

ECD\_L

ClientSampleId :

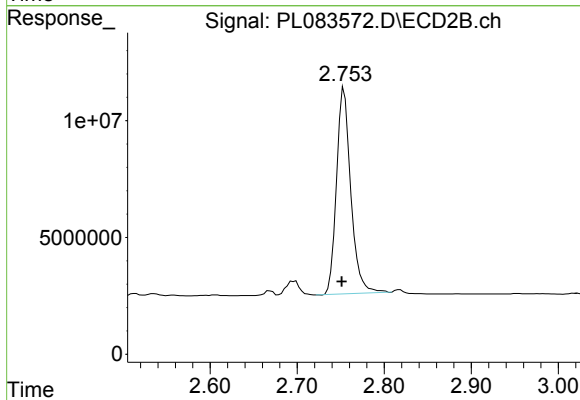
PTOXCCC500

Manual Integrations

APPROVED

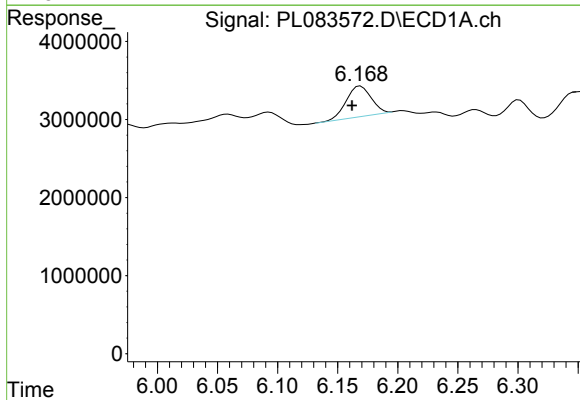
Reviewed By :Abdul Mirza 06/21/2023

Supervised By :Ankita Jodhani 06/21/2023



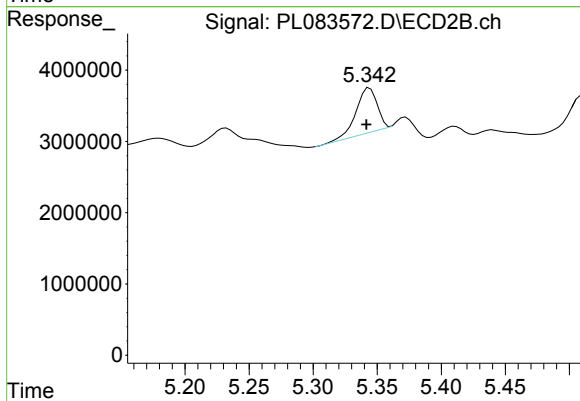
#1 Tetrachloro-m-xylene

R.T.: 2.754 min  
 Delta R.T.: 0.003 min  
 Response: 100787054  
 Conc: 44.41 ng/ml



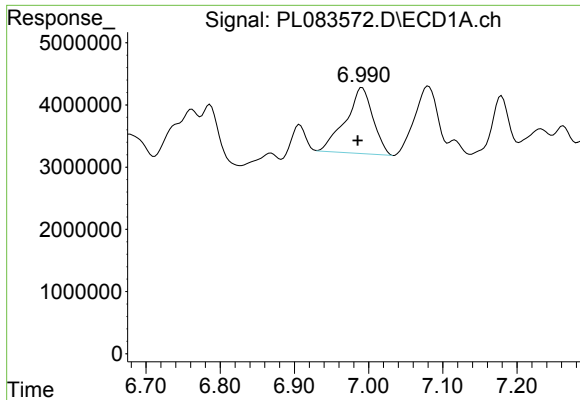
#2 Toxaphene-1

R.T.: 6.169 min  
 Delta R.T.: 0.007 min  
 Response: 5643774  
 Conc: 415.21 ng/ml



#2 Toxaphene-1

R.T.: 5.344 min  
 Delta R.T.: 0.003 min  
 Response: 7146165  
 Conc: 524.37 ng/ml



#3 Toxaphene-2

R.T.: 6.990 min  
 Delta R.T.: 0.004 min  
 Response: 27151988  
 Conc: 436.05 ng/ml

Instrument :

ECD\_L

ClientSampleId :

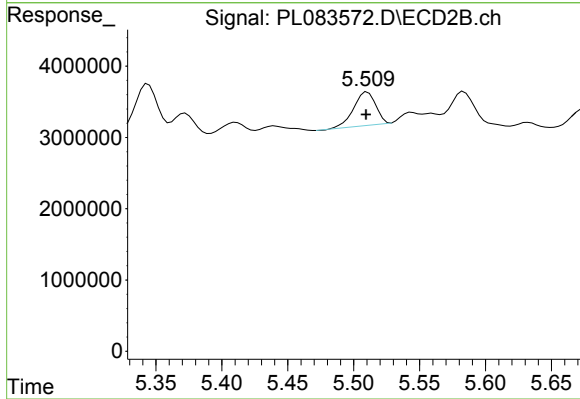
PTOXCCC500

Manual Integrations

APPROVED

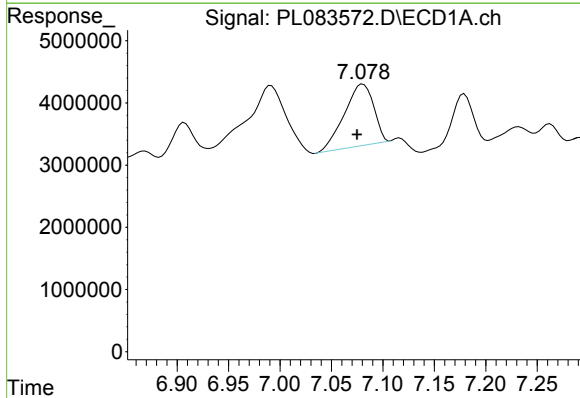
Reviewed By :Abdul Mirza 06/21/2023

Supervised By :Ankita Jodhani 06/21/2023



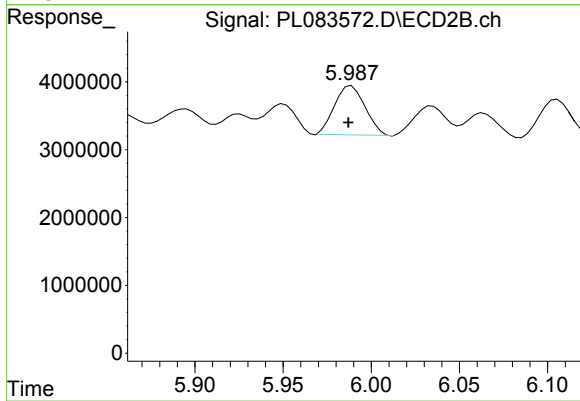
#3 Toxaphene-2

R.T.: 5.510 min  
 Delta R.T.: 0.001 min  
 Response: 5464009  
 Conc: 471.83 ng/ml



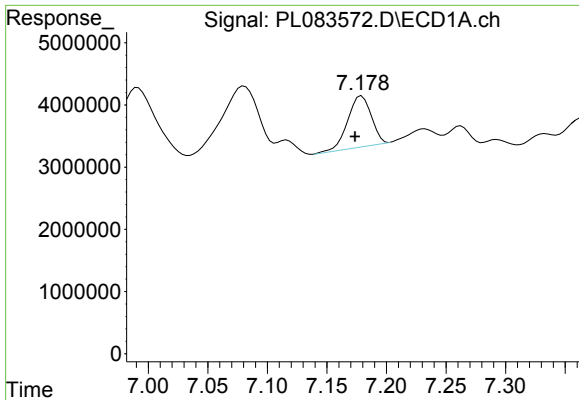
#4 Toxaphene-3

R.T.: 7.081 min  
 Delta R.T.: 0.006 min  
 Response: 19576145  
 Conc: 436.79 ng/ml



#4 Toxaphene-3

R.T.: 5.989 min  
 Delta R.T.: 0.002 min  
 Response: 8707893  
 Conc: 477.00 ng/ml



#5 Toxaphene-4

R.T.: 7.179 min  
 Delta R.T.: 0.006 min  
 Response: 11309825  
 Conc: 439.31 ng/ml

Instrument :

ECD\_L

ClientSampleId :

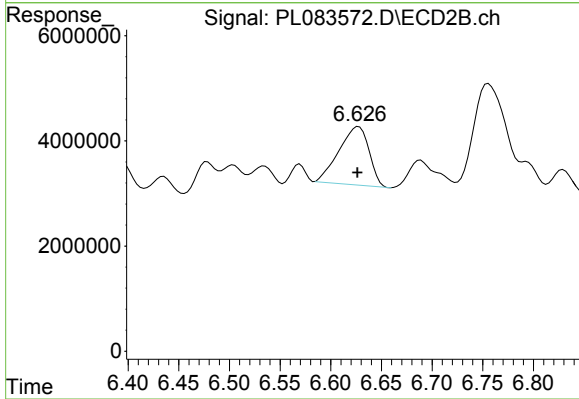
PTOXCCC500

Manual Integrations

APPROVED

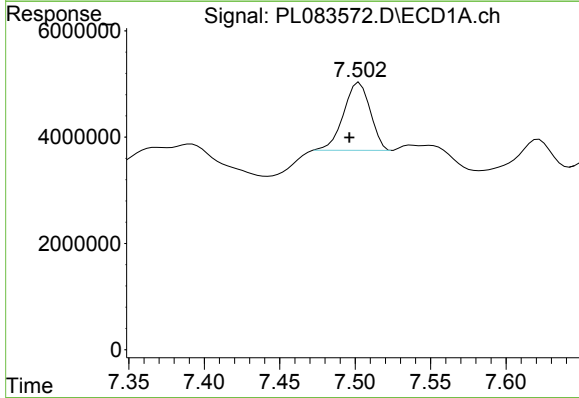
Reviewed By :Abdul Mirza 06/21/2023

Supervised By :Ankita Jodhani 06/21/2023



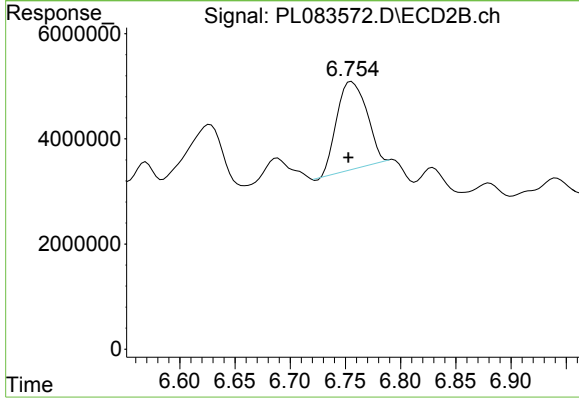
#5 Toxaphene-4

R.T.: 6.627 min  
 Delta R.T.: 0.001 min  
 Response: 22955109  
 Conc: 447.06 ng/ml



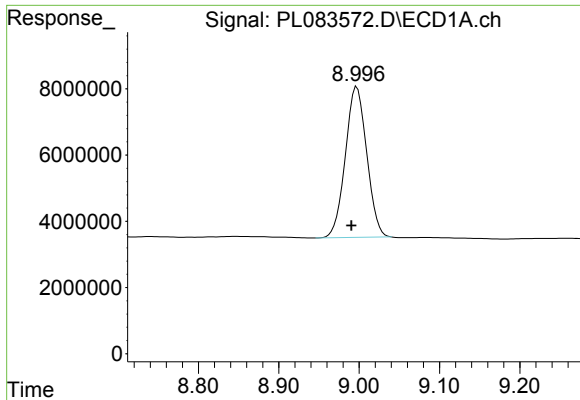
#6 Toxaphene-5

R.T.: 7.502 min  
 Delta R.T.: 0.005 min  
 Response: 15717501  
 Conc: 439.55 ng/ml m



#6 Toxaphene-5

R.T.: 6.756 min  
 Delta R.T.: 0.003 min  
 Response: 31336714  
 Conc: 436.89 ng/ml



#7 Decachlorobiphenyl

R.T.: 8.997 min  
 Delta R.T.: 0.007 min  
 Response: 84057721  
 Conc: 42.44 ng/ml

Instrument :

ECD\_L

ClientSampleId :

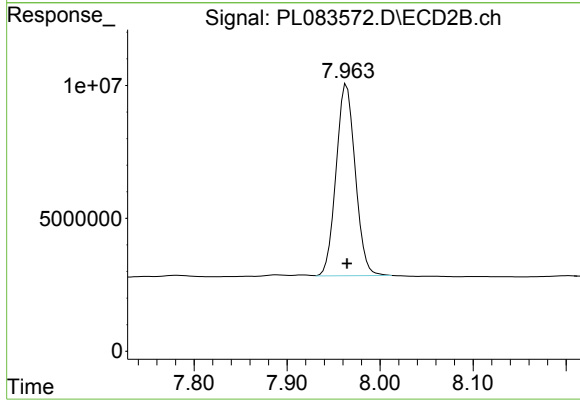
PTOXCCC500

Manual Integrations

APPROVED

Reviewed By :Abdul Mirza 06/21/2023

Supervised By :Ankita Jodhani 06/21/2023



#7 Decachlorobiphenyl

R.T.: 7.964 min  
 Delta R.T.: 0.000 min  
 Response: 103205814  
 Conc: 43.03 ng/ml