

Data Path : Z:\pestpcbsrv\HPCHEM1\ECD_L\Data\PL062119\
 Data File : PL049771.D
 Signal(s) : Signal #1: ECD1A.ch Signal #2: ECD2B.ch
 Acq On : 21 Jun 2019 19:54
 Operator : SM\AJ
 Sample : K3470-02 5X
 Misc :
 ALS Vial : 30 Sample Multiplier: 1

Instrument :
 ECD_L
 ClientSampleId :
 SAMPLE-4

Integration File signal 1: autoint1.e
 Integration File signal 2: autoint2.e
 Quant Time: Jun 21 23:15:57 2019
 Quant Method : Z:\pestpcbsrv\HPCHEM1\ECD_L\methods\PL062019.M
 Quant Title : GC Extractables
 QLast Update : Fri Jun 21 02:23:20 2019
 Response via : Initial Calibration
 Integrator: ChemStation

Volume Inj. : 1 µl
 Signal #1 Phase : ZB-MR2 Signal #2 Phase: ZB-MR1
 Signal #1 Info : 30M x 0.32mm x0.2 Signal #2 Info : 30M x 0.32mm x0.5µm

Compound	RT#1	RT#2	Resp#1	Resp#2	ng/ml	ng/ml
----------	------	------	--------	--------	-------	-------

 System Monitoring Compounds

1) SA Tetrachlo...	3.323	3.934	40991372	10713483	3.635	3.499
28) SA Decachlor...	7.989	8.971	35085637	10862604	2.761	3.236

Target Compounds

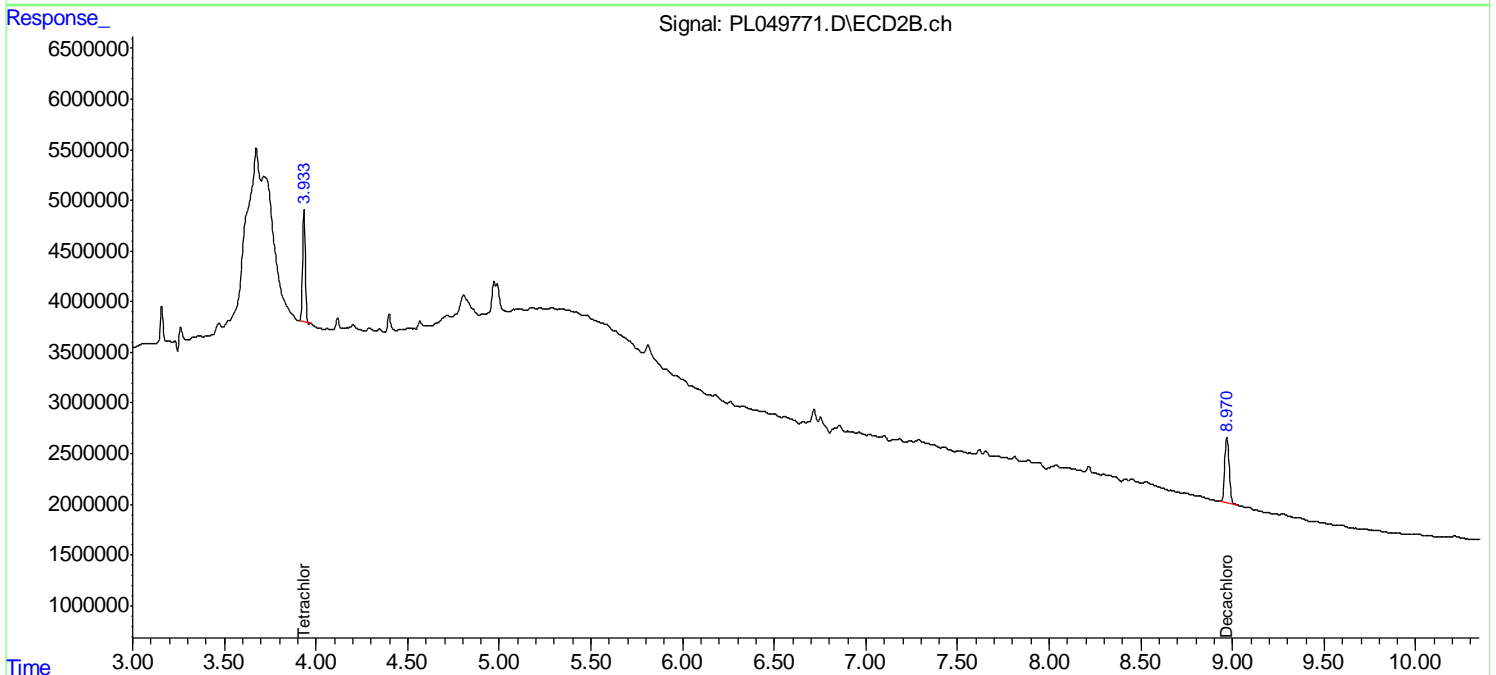
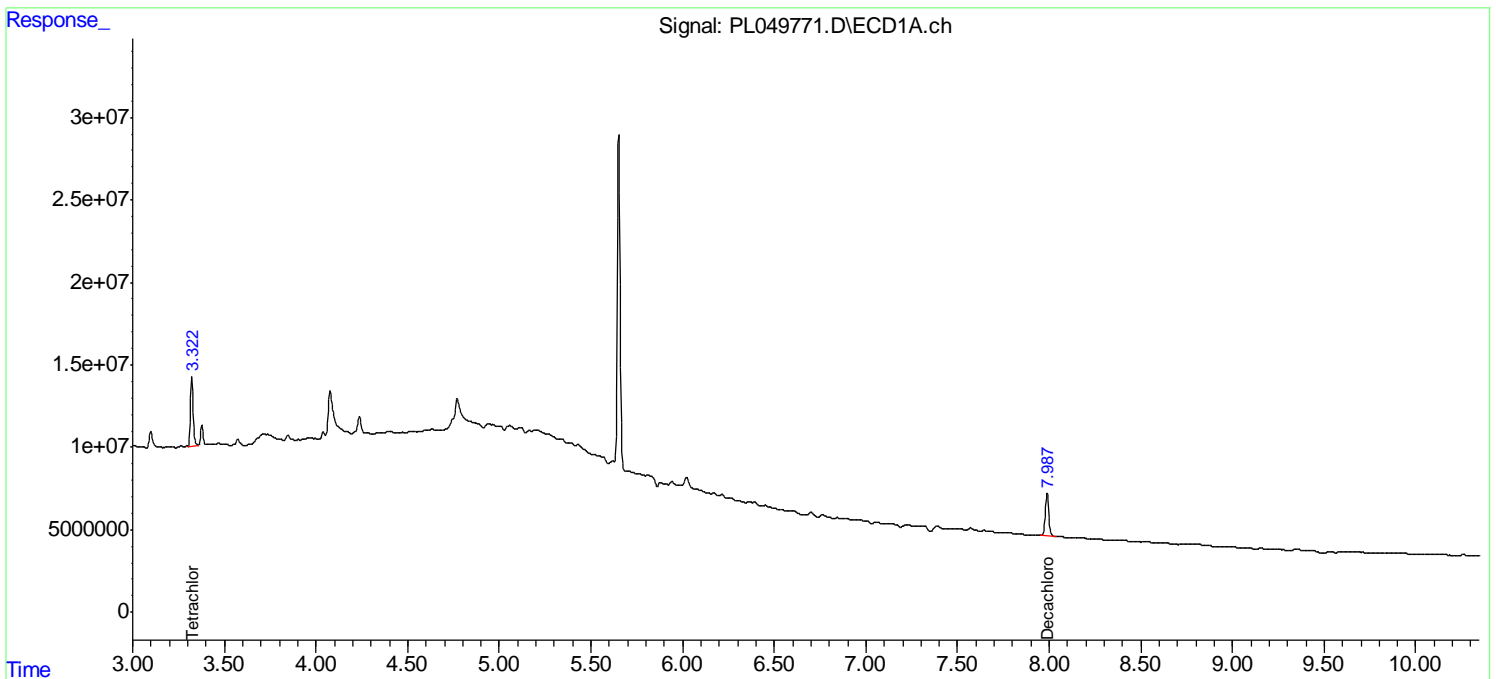
(f)=RT Delta > 1/2 Window (#)=Amounts differ by > 25% (m)=manual int.

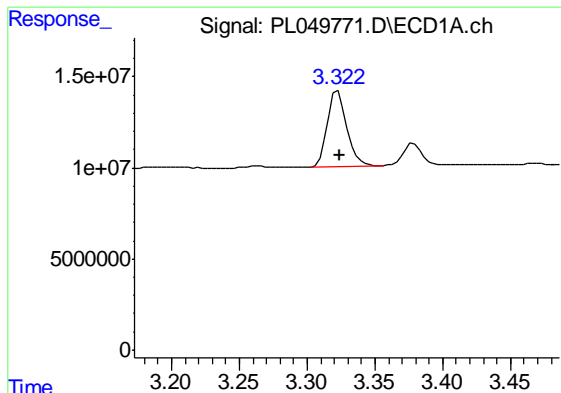
Data Path : Z:\pestpcbsrv\HPCHEM1\ECD_L\Data\PL062119\
 Data File : PL049771.D
 Signal(s) : Signal #1: ECD1A.ch Signal #2: ECD2B.ch
 Acq On : 21 Jun 2019 19:54
 Operator : SM\AJ
 Sample : K3470-02 5X
 Misc :
 ALS Vial : 30 Sample Multiplier: 1

Instrument :
 ECD_L
 ClientSampleId :
 SAMPLE-4

Integration File signal 1: autoint1.e
 Integration File signal 2: autoint2.e
 Quant Time: Jun 21 23:15:57 2019
 Quant Method : Z:\pestpcbsrv\HPCHEM1\ECD_L\methods\PL062019.M
 Quant Title : GC Extractables
 QLast Update : Fri Jun 21 02:23:20 2019
 Response via : Initial Calibration
 Integrator: ChemStation

Volume Inj. : 1 µl
 Signal #1 Phase : ZB-MR2 Signal #2 Phase: ZB-MR1
 Signal #1 Info : 30M x 0.32mm x0.2 Signal #2 Info : 30M x 0.32mm x0.5µm

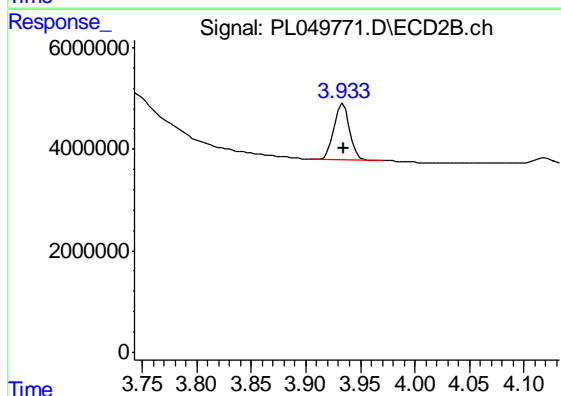




#1 Tetrachloro-m-xylene

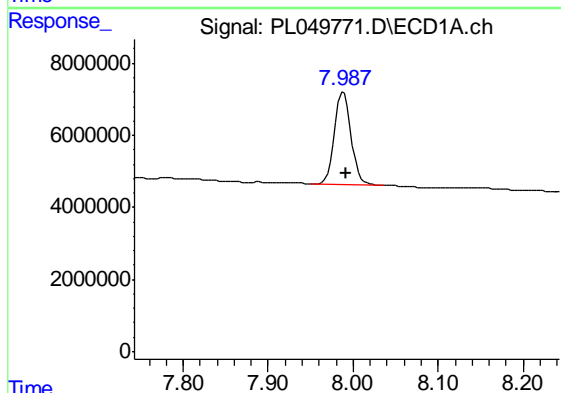
R.T.: 3.323 min
 Delta R.T.: -0.001 min
 Response: 40991372
 Conc: 3.63 ng/ml

Instrument :
 ECD_L
 ClientSampleId :
 SAMPLE-4



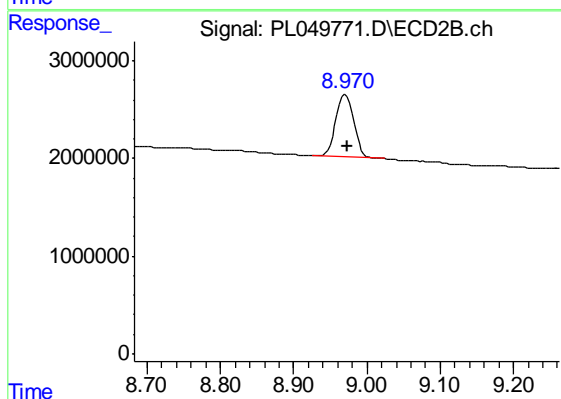
#1 Tetrachloro-m-xylene

R.T.: 3.934 min
 Delta R.T.: 0.000 min
 Response: 10713483
 Conc: 3.50 ng/ml



#28 Decachlorobiphenyl

R.T.: 7.989 min
 Delta R.T.: -0.003 min
 Response: 35085637
 Conc: 2.76 ng/ml



#28 Decachlorobiphenyl

R.T.: 8.971 min
 Delta R.T.: -0.002 min
 Response: 10862604
 Conc: 3.24 ng/ml