

Data Path : Z:\pestpcbsrv\HPCHEM1\ECD_L\Data\PL062320\
 Data File : PL059447.D
 Signal(s) : Signal #1: ECD1A.ch Signal #2: ECD2B.ch
 Acq On : 23 Jun 2020 13:42
 Operator : AJ\MA
 Sample : PB129712BL
 Misc :
 ALS Vial : 5 Sample Multiplier: 1

Instrument :
 ECD_L
 ClientSampleId :
 PB129712BL

Integration File signal 1: autoint1.e
 Integration File signal 2: autoint2.e
 Quant Time: Jun 23 15:37:29 2020
 Quant Method : Z:\pestpcbsrv\HPCHEM1\ECD_L\methods\PL062220.M
 Quant Title : GC Extractables
 QLast Update : Mon Jun 22 14:09:48 2020
 Response via : Initial Calibration
 Integrator: ChemStation

Volume Inj. : 1 µl
 Signal #1 Phase : ZB-MR2 Signal #2 Phase: ZB-MR1
 Signal #1 Info : 30M x 0.32mm x0.2 Signal #2 Info : 30M x 0.32mm x0.5µm

Compound	RT#1	RT#2	Resp#1	Resp#2	ng/ml	ng/ml

System Monitoring Compounds						
1) SA Tetrachlo...	3.525	4.071	34285033	40878505	19.078	15.838
28) SA Decachlor...	8.300	9.188	37030748	50582782	21.747	22.092
Target Compounds						
6) B beta-BHC	4.469f	0.000	22197	0	0.023	N.D. #
14) MA Endrin	6.110f	6.814f	2469012	227642	1.625	0.092 #
15) B Endosulfa...	0.000	6.982f	0	8126898	N.D.	3.205 #
16) A 4,4'-DDD	0.000	6.915	0	491020	N.D.	0.221 #
17) MA 4,4'-DDT	6.456	7.194f	108793	494272	0.083	0.217 #
21) B Endrin ke...	7.238	0.000	431042	0	0.247	N.D. #
22) Mirex	7.424	0.000	1594690	0	1.129	N.D. #

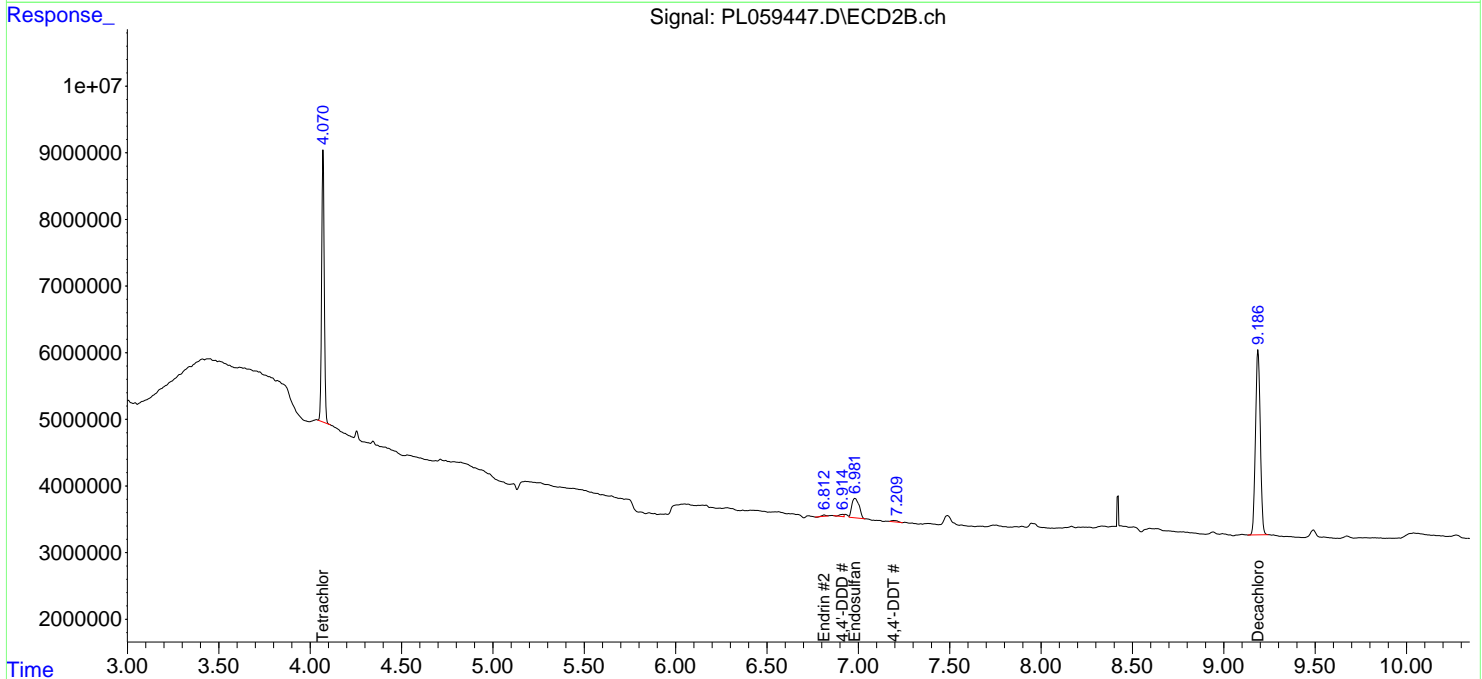
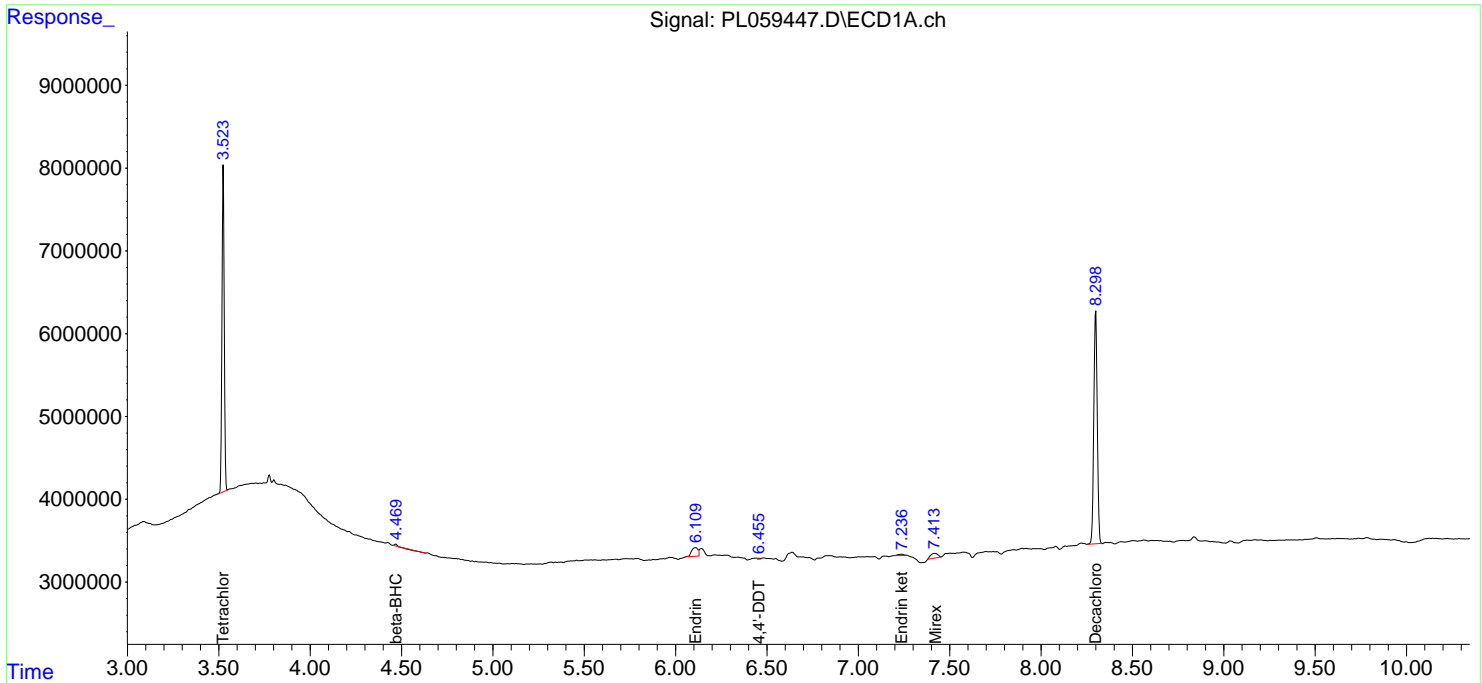
(f)=RT Delta > 1/2 Window (#)=Amounts differ by > 25% (m)=manual int.

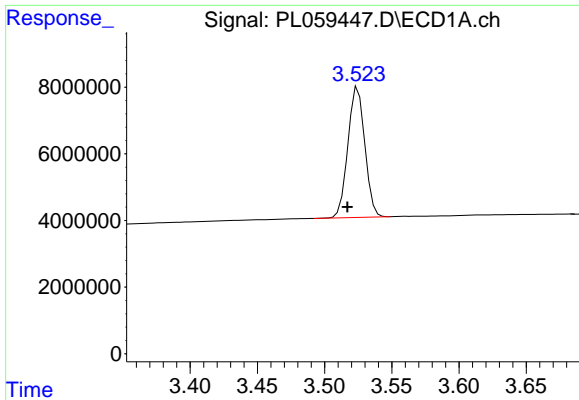
Data Path : Z:\pestpcbsrv\HPCHEM1\ECD_L\Data\PL062320\
 Data File : PL059447.D
 Signal(s) : Signal #1: ECD1A.ch Signal #2: ECD2B.ch
 Acq On : 23 Jun 2020 13:42
 Operator : AJ\MA
 Sample : PB129712BL
 Misc :
 ALS Vial : 5 Sample Multiplier: 1

Instrument :
 ECD_L
 ClientSampleID :
 PB129712BL

Integration File signal 1: autoint1.e
 Integration File signal 2: autoint2.e
 Quant Time: Jun 23 15:37:29 2020
 Quant Method : Z:\pestpcbsrv\HPCHEM1\ECD_L\methods\PL062220.M
 Quant Title : GC Extractables
 QLast Update : Mon Jun 22 14:09:48 2020
 Response via : Initial Calibration
 Integrator: ChemStation

Volume Inj. : 1 µl
 Signal #1 Phase : ZB-MR2 Signal #2 Phase: ZB-MR1
 Signal #1 Info : 30M x 0.32mm x0.2 Signal #2 Info : 30M x 0.32mm x0.5µm

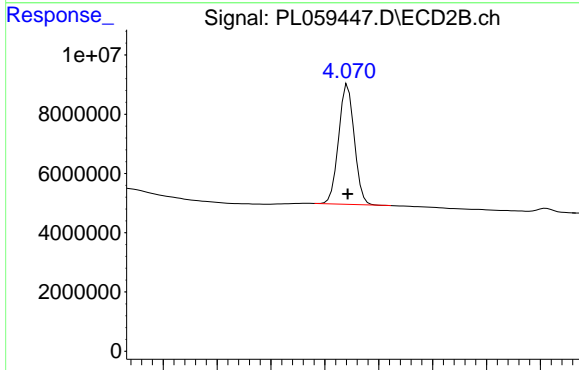




#1 Tetrachloro-m-xylene

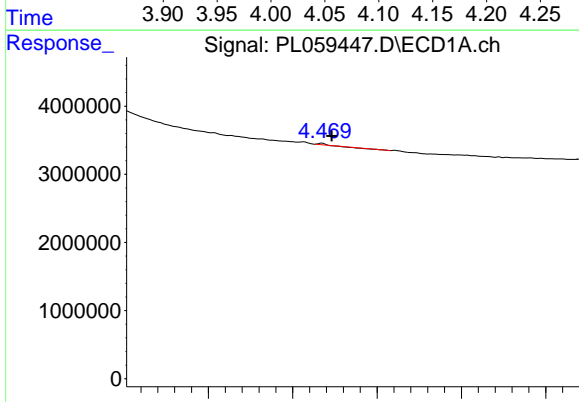
R.T.: 3.525 min
 Delta R.T.: 0.008 min
 Response: 34285033
 Conc: 19.08 ng/ml

Instrument :
 ECD_L
 ClientSampleId :
 PB129712BL



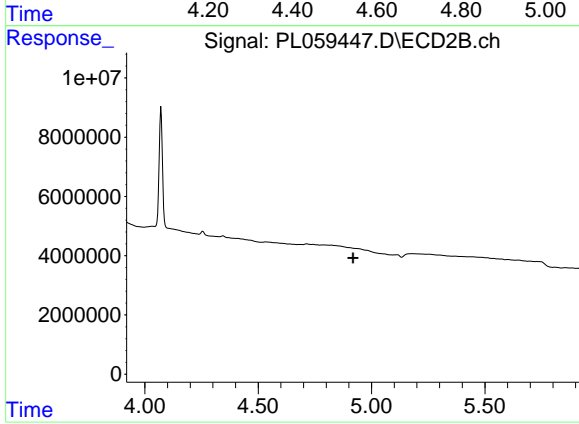
#1 Tetrachloro-m-xylene

R.T.: 4.071 min
 Delta R.T.: 0.000 min
 Response: 40878505
 Conc: 15.84 ng/ml



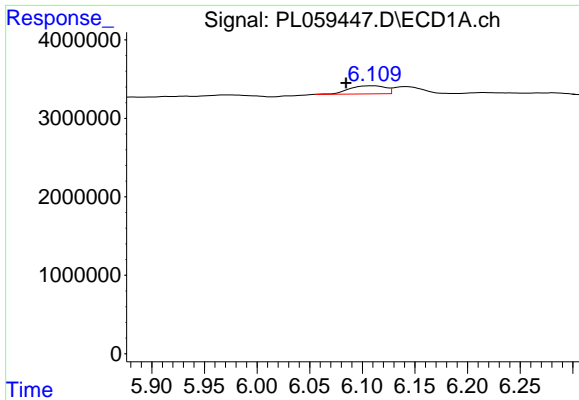
#6 beta-BHC

R.T.: 4.469 min
 Delta R.T.: -0.024 min
 Response: 22197
 Conc: 0.02 ng/ml



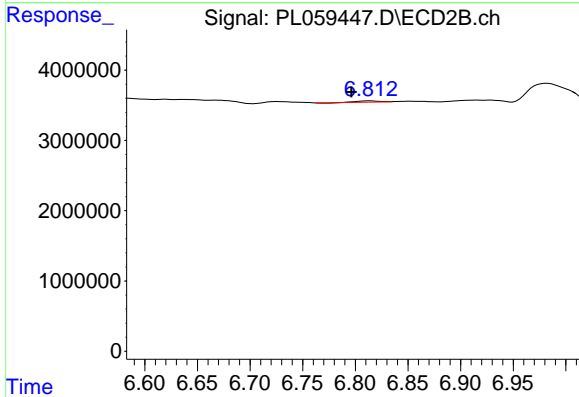
#6 beta-BHC

R.T.: 0.000 min
 Exp R.T. : 4.919 min
 Response: 0
 Conc: N.D.

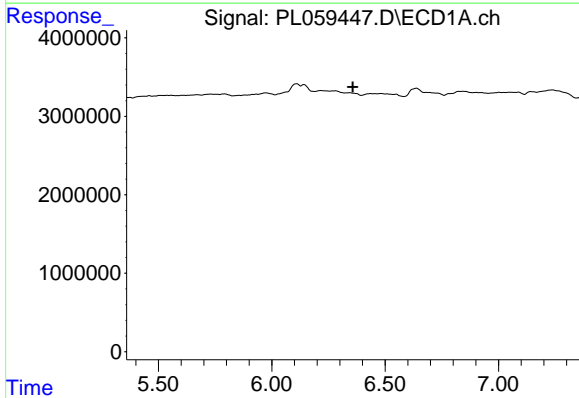


#14 Endrin
 R.T.: 6.110 min
 Delta R.T.: 0.026 min
 Response: 2469012
 Conc: 1.62 ng/ml

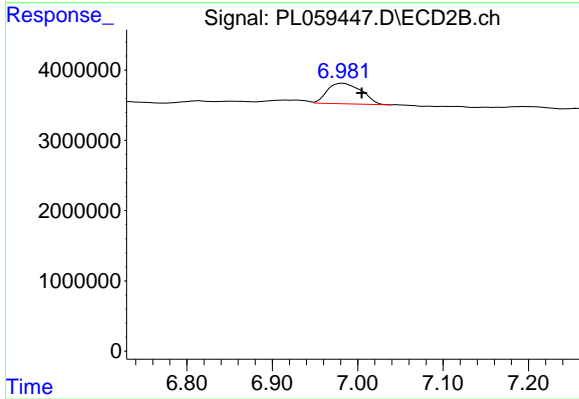
Instrument :
 ECD_L
 ClientSampleId :
 PB129712BL



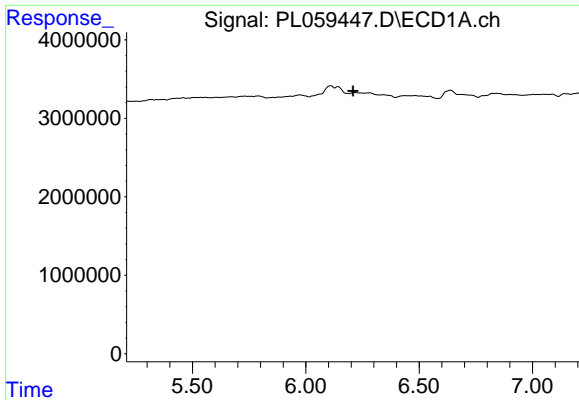
#14 Endrin
 R.T.: 6.814 min
 Delta R.T.: 0.017 min
 Response: 227642
 Conc: 0.09 ng/ml



#15 Endosulfan II
 R.T.: 0.000 min
 Exp R.T. : 6.357 min
 Response: 0
 Conc: N.D.



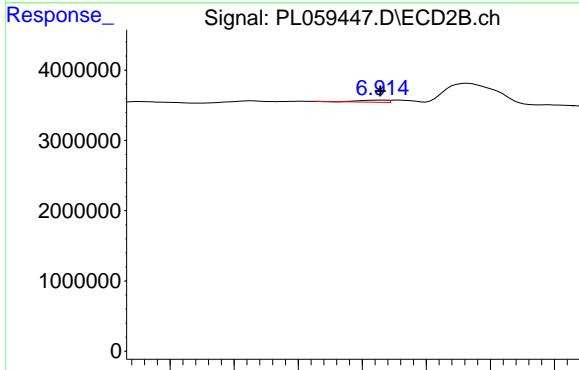
#15 Endosulfan II
 R.T.: 6.982 min
 Delta R.T.: -0.022 min
 Response: 8126898
 Conc: 3.20 ng/ml



#16 4,4'-DDD

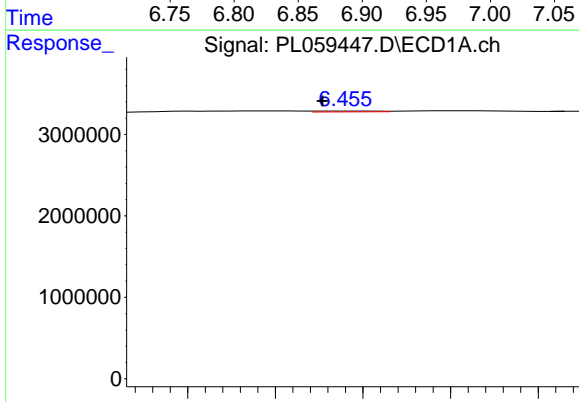
R.T.: 0.000 min
 Exp R.T.: 6.209 min
 Response: 0
 Conc: N.D.

Instrument :
 ECD_L
ClientSampleId :
 PB129712BL



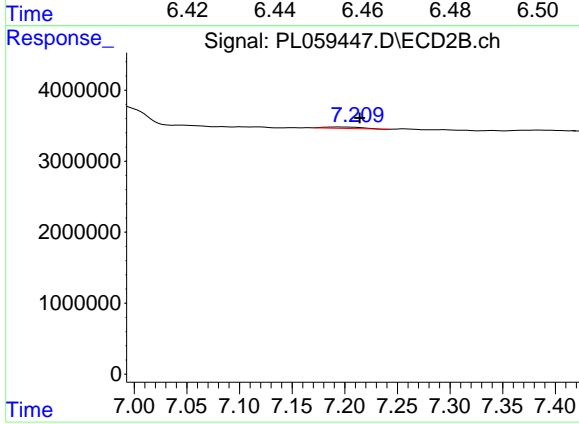
#16 4,4'-DDD

R.T.: 6.915 min
 Delta R.T.: 0.001 min
 Response: 491020
 Conc: 0.22 ng/ml



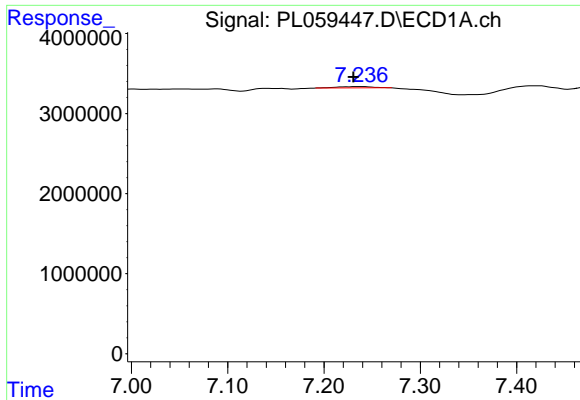
#17 4,4'-DDT

R.T.: 6.456 min
 Delta R.T.: 0.006 min
 Response: 108793
 Conc: 0.08 ng/ml



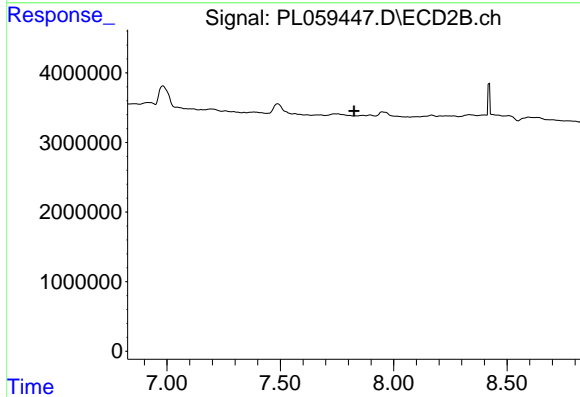
#17 4,4'-DDT

R.T.: 7.194 min
 Delta R.T.: -0.020 min
 Response: 494272
 Conc: 0.22 ng/ml

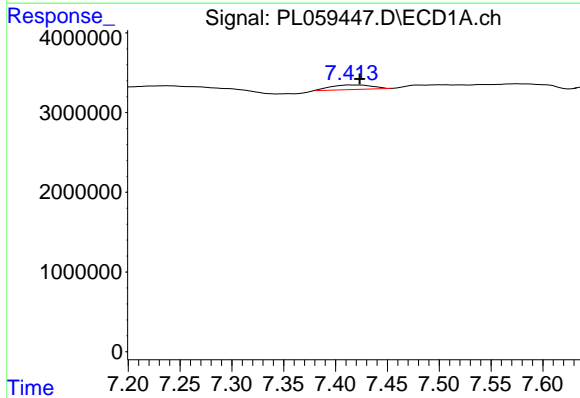


#21 Endrin ketone
 R.T.: 7.238 min
 Delta R.T.: 0.007 min
 Response: 431042
 Conc: 0.25 ng/ml

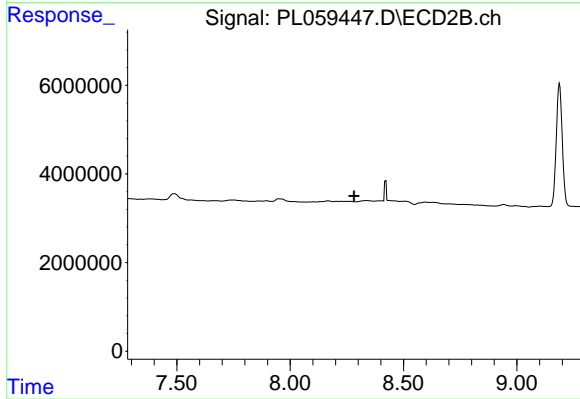
Instrument :
 ECD_L
 ClientSampleId :
 PB129712BL



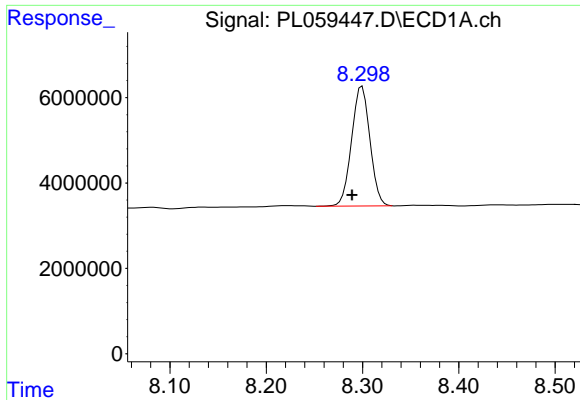
#21 Endrin ketone
 R.T.: 0.000 min
 Exp R.T. : 7.826 min
 Response: 0
 Conc: N.D.



#22 Mirex
 R.T.: 7.424 min
 Delta R.T.: 0.000 min
 Response: 1594690
 Conc: 1.13 ng/ml



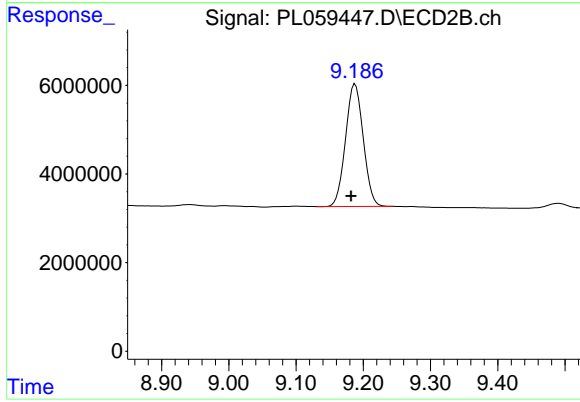
#22 Mirex
 R.T.: 0.000 min
 Exp R.T. : 8.283 min
 Response: 0
 Conc: N.D.



#28 Decachlorobiphenyl

R.T.: 8.300 min
Delta R.T.: 0.010 min
Response: 37030748
Conc: 21.75 ng/ml

Instrument :
ECD_L
ClientSampleId :
PB129712BL



#28 Decachlorobiphenyl

R.T.: 9.188 min
Delta R.T.: 0.006 min
Response: 50582782
Conc: 22.09 ng/ml