

Data Path : Z:\pestpcbsrv\HPCHEM1\ECD_L\Data\PL062320\
 Data File : PL059453.D
 Signal(s) : Signal #1: ECD1A.ch Signal #2: ECD2B.ch
 Acq On : 23 Jun 2020 15:45
 Operator : AJ\MA
 Sample : L3051-02MSD
 Misc :
 ALS Vial : 11 Sample Multiplier: 1

Instrument :
 ECD_L
 ClientSampleId :
 SLUDGE-BOXMSD

Integration File signal 1: autoint1.e
 Integration File signal 2: autoint2.e
 Quant Time: Jun 23 15:57:11 2020
 Quant Method : Z:\pestpcbsrv\HPCHEM1\ECD_L\methods\PL062220.M
 Quant Title : GC Extractables
 QLast Update : Mon Jun 22 14:09:48 2020
 Response via : Initial Calibration
 Integrator: ChemStation

Volume Inj. : 1 µl
 Signal #1 Phase : ZB-MR2 Signal #2 Phase: ZB-MR1
 Signal #1 Info : 30M x 0.32mm x0.2 Signal #2 Info : 30M x 0.32mm x0.5µm

Compound	RT#1	RT#2	Resp#1	Resp#2	ng/ml	ng/ml

System Monitoring Compounds						
1) SA Tetrachlo...	3.517	4.071	40918314	57709368	22.769	22.359
28) SA Decachlor...	8.289	9.183	27679607	38006846	16.255	16.600
Target Compounds						
2) A alpha-BHC	3.959	4.464	156.4E6	225.1E6	60.601	66.077
3) MA gamma-BHC...	4.244	4.752	140.6E6	200.5E6	61.654	64.058
4) MA Heptachlor	4.549	5.266	128.5E6	196.3E6	60.255	60.593
5) MB Aldrin	4.799	5.574	110.1E6	181.3E6	61.891	58.880
6) B beta-BHC	4.493	4.920	56249656	84709829	59.067	62.284
7) B delta-BHC	4.700	5.140	123.9E6	165.5E6	60.754	59.493
8) B Heptachlo...	5.243	5.962	95808605	155.8E6	63.736	62.091
9) A Endosulfan I	5.584	6.321	91317859	161.4E6	62.071	59.473
10) B gamma-Chl...	5.471	6.196	95410746	172.7E6	62.208	58.974
11) B alpha-Chl...	5.530	6.270	95948537	175.1E6	61.741	59.478
12) B 4,4'-DDE	5.693	6.425	91102800	161.6E6	62.697	59.843
13) MA Dieldrin	5.828	6.579	98301123	169.3E6	62.312	60.136
14) MA Endrin	6.086	6.798	95396945	148.5E6	62.786	60.133
15) B Endosulfa...	6.357	7.006	93622355	155.7E6	60.626	61.407
16) A 4,4'-DDD	6.210	6.916	80246036	139.1E6	61.493	62.507
17) MA 4,4'-DDT	6.452	7.217	83988171	138.9E6	63.697	61.118
18) B Endrin al...	6.526	7.130	79295138	133.1E6	59.996	60.680
19) B Endosulfa...	6.739	7.354	92024359	143.4E6	60.611	59.247
20) A Methoxychlor	6.997	7.674	49756973	77675669	61.395	58.514
21) B Endrin ke...	7.231	7.827	105.2E6	154.4E6	60.329	59.789
22) Mirex	7.425	8.285	82859836	115.4E6	58.679	58.414
23) Chlordane-1	4.403	5.058f	568667	393639	9.993	3.895 #
24) Chlordane-2	4.922f	5.524f	2536688	279460	46.735	2.546 #
25) Chlordane-3	5.471	6.196	95410746	172.7E6	674.064	440.566 #
26) Chlordane-4	5.530	6.270	95948537	175.1E6	812.747	368.624 #
27) Chlordane-5	6.357	7.061f	93622355	3331539	1668.279	38.475 #

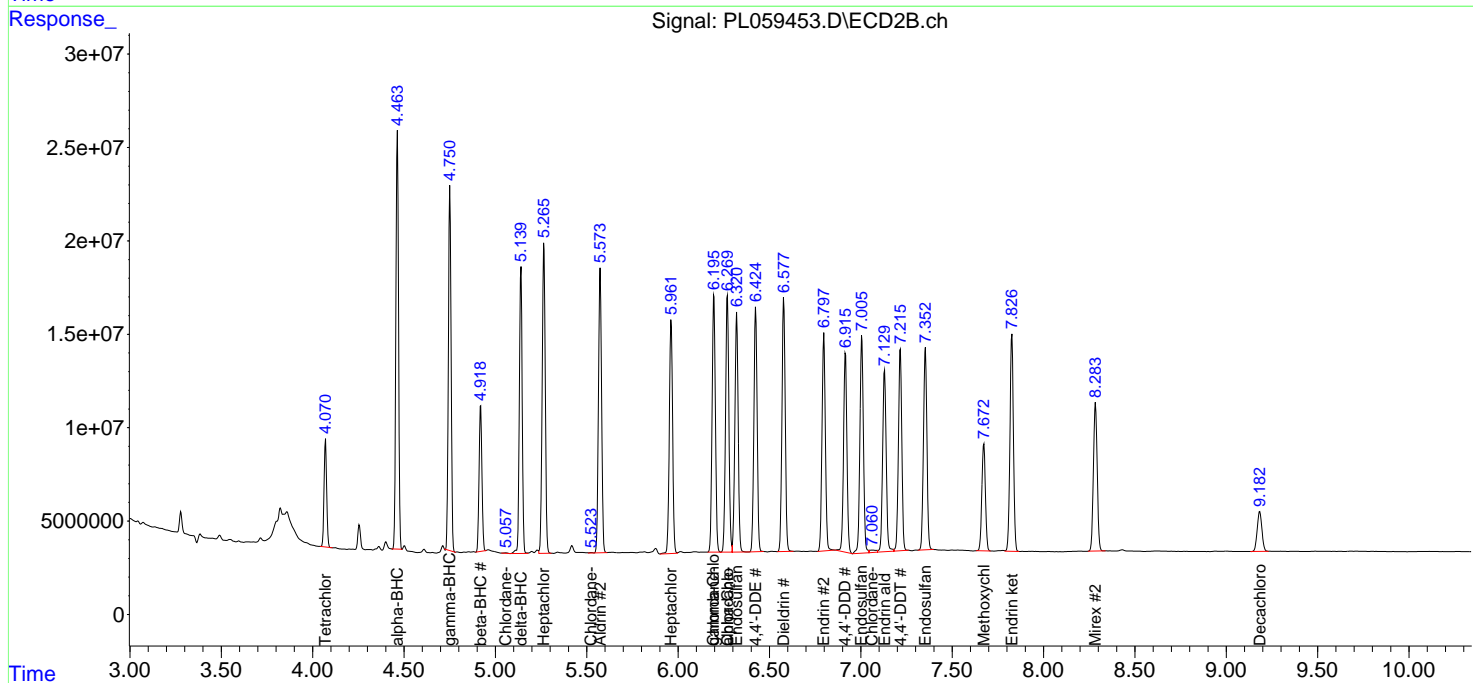
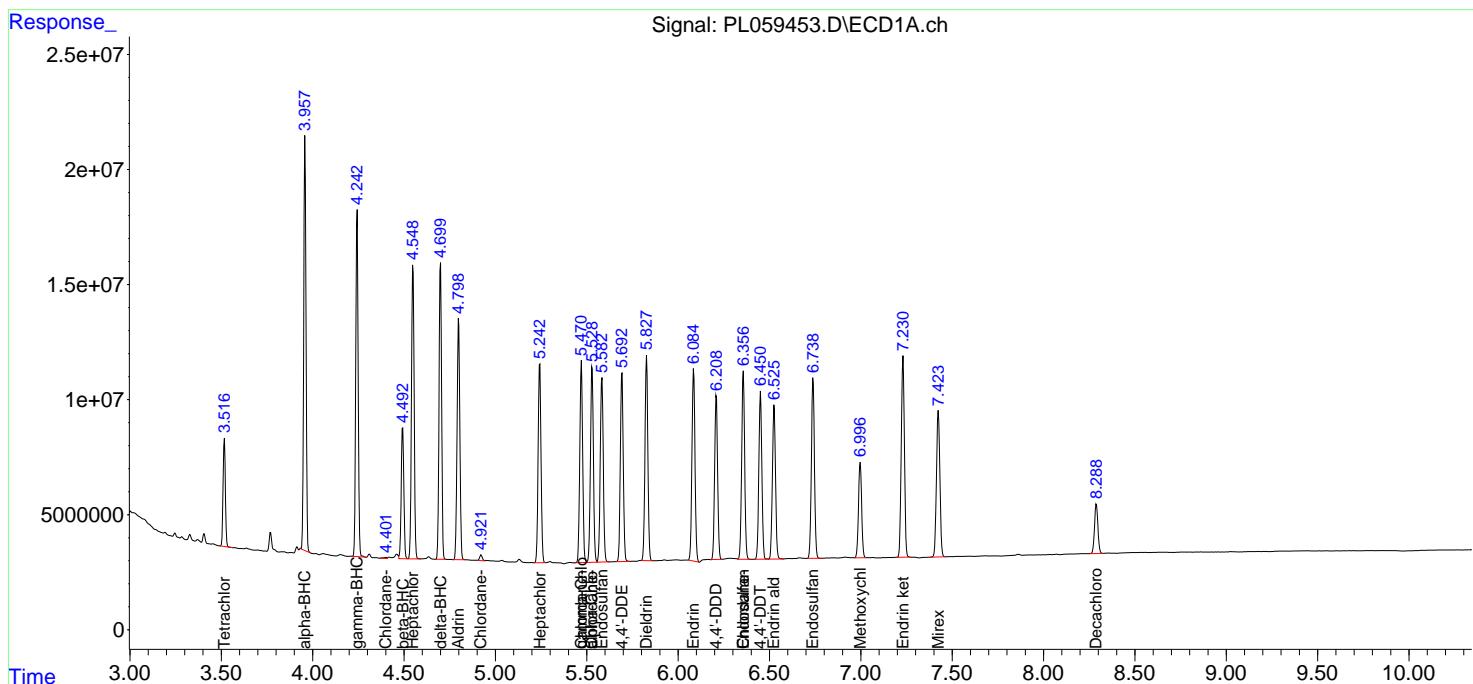
(f)=RT Delta > 1/2 Window (#)=Amounts differ by > 25% (m)=manual int.

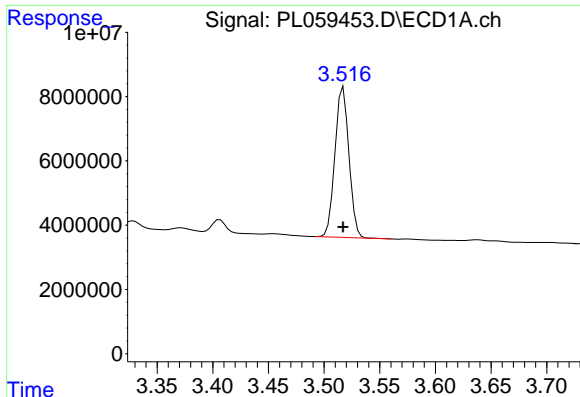
Data Path : Z:\pestpcbsrv\HPCHEM1\ECD_L\Data\PL062320\
 Data File : PL059453.D
 Signal(s) : Signal #1: ECD1A.ch Signal #2: ECD2B.ch
 Acq On : 23 Jun 2020 15:45
 Operator : AJ\MA
 Sample : L3051-02MSD
 Misc :
 ALS Vial : 11 Sample Multiplier: 1

Instrument :
 ECD_L
 ClientSampleId :
 SLUDGE-BOXMSD

Integration File signal 1: autoint1.e
 Integration File signal 2: autoint2.e
 Quant Time: Jun 23 15:57:11 2020
 Quant Method : Z:\pestpcbsrv\HPCHEM1\ECD_L\methods\PL062220.M
 Quant Title : GC Extractables
 QLast Update : Mon Jun 22 14:09:48 2020
 Response via : Initial Calibration
 Integrator: ChemStation

Volume Inj. : 1 µl
 Signal #1 Phase : ZB-MR2 Signal #2 Phase: ZB-MR1
 Signal #1 Info : 30M x 0.32mm x0.2 Signal #2 Info : 30M x 0.32mm x0.5µm

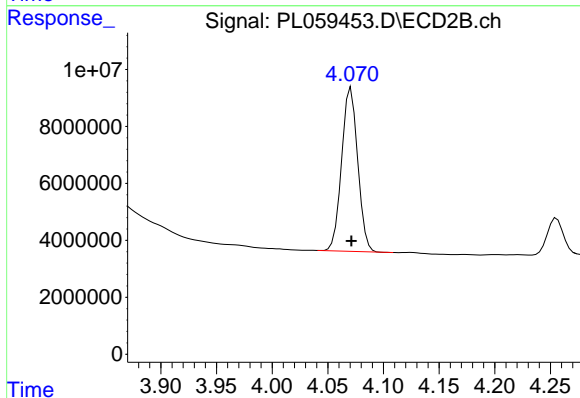




#1 Tetrachloro-m-xylene

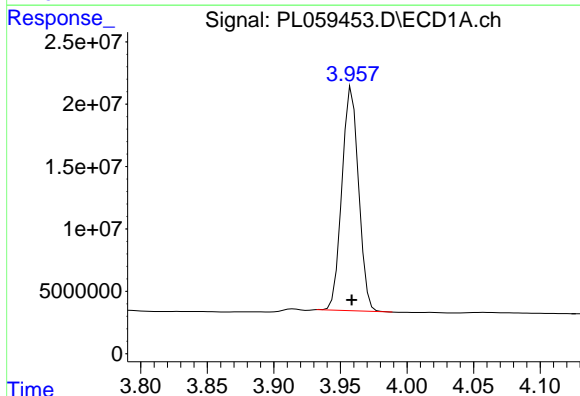
R.T.: 3.517 min
 Delta R.T.: 0.000 min
 Response: 40918314
 Conc: 22.77 ng/ml

Instrument :
 ECD_L
 ClientSampleId :
 SLUDGE-BOXMSD



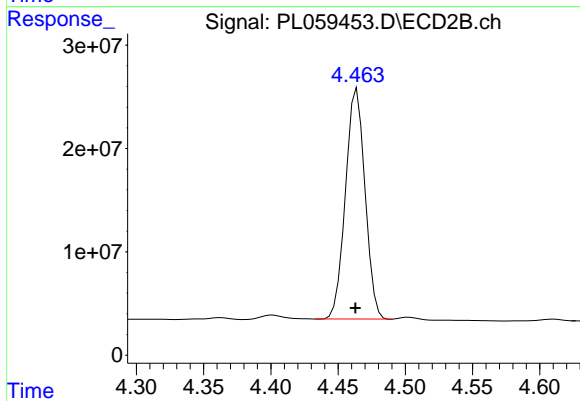
#1 Tetrachloro-m-xylene

R.T.: 4.071 min
 Delta R.T.: 0.000 min
 Response: 57709368
 Conc: 22.36 ng/ml



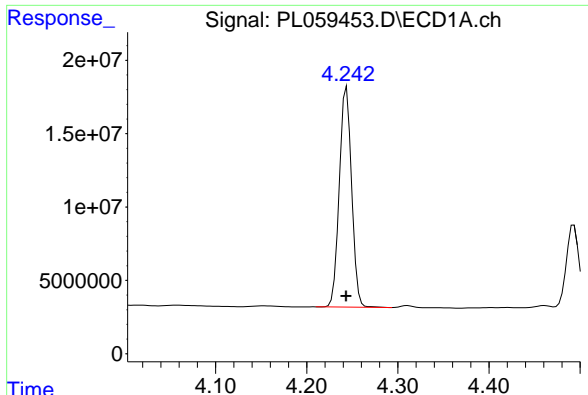
#2 alpha-BHC

R.T.: 3.959 min
 Delta R.T.: 0.000 min
 Response: 156416319
 Conc: 60.60 ng/ml



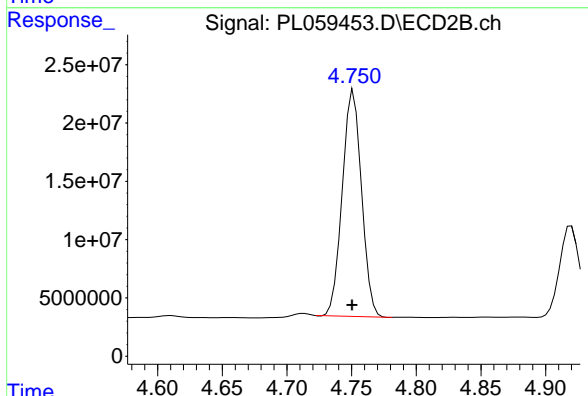
#2 alpha-BHC

R.T.: 4.464 min
 Delta R.T.: 0.001 min
 Response: 225097388
 Conc: 66.08 ng/ml

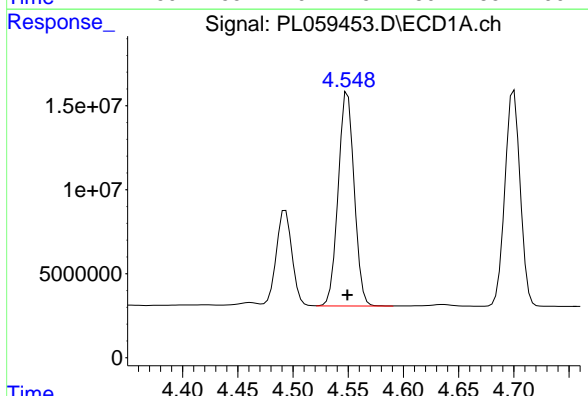


#3 gamma-BHC (Lindane)
 R.T.: 4.244 min
 Delta R.T.: 0.000 min
 Response: 140607128
 Conc: 61.65 ng/ml

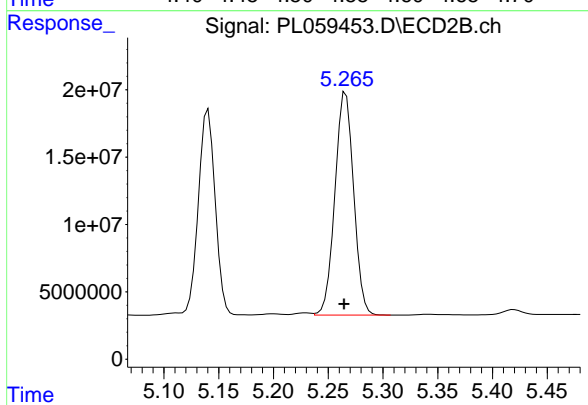
Instrument :
 ECD_L
 ClientSampleId :
 SLUDGE-BOXMSD



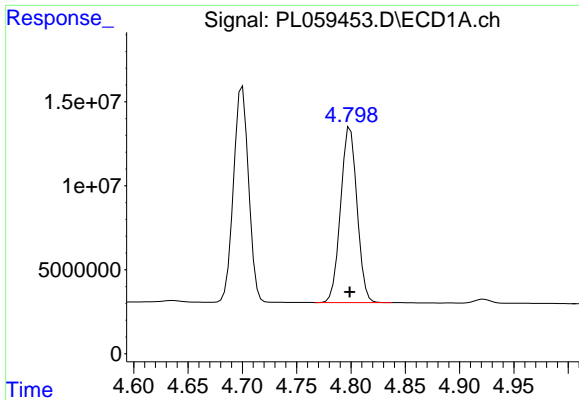
#3 gamma-BHC (Lindane)
 R.T.: 4.752 min
 Delta R.T.: 0.001 min
 Response: 200496581
 Conc: 64.06 ng/ml



#4 Heptachlor
 R.T.: 4.549 min
 Delta R.T.: 0.000 min
 Response: 128495168
 Conc: 60.26 ng/ml

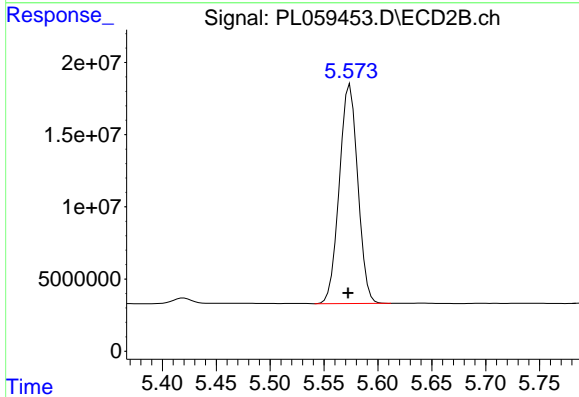


#4 Heptachlor
 R.T.: 5.266 min
 Delta R.T.: 0.002 min
 Response: 196252712
 Conc: 60.59 ng/ml

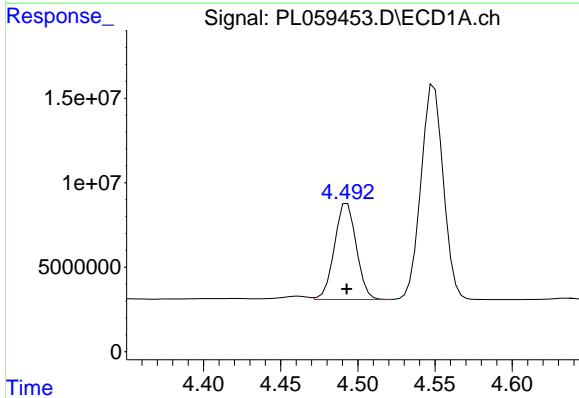


#5 Aldrin
 R.T.: 4.799 min
 Delta R.T.: 0.000 min
 Response: 110133608
 Conc: 61.89 ng/ml

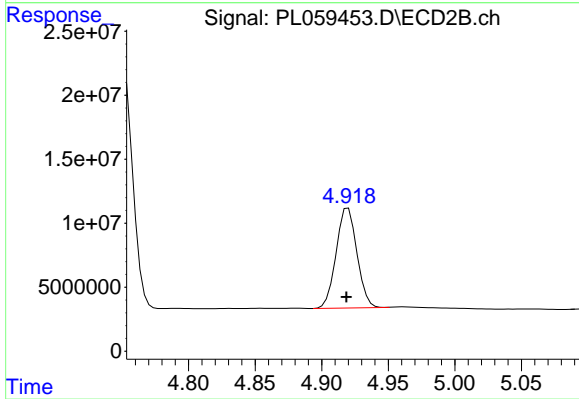
Instrument :
 ECD_L
 ClientSampleId :
 SLUDGE-BOXMSD



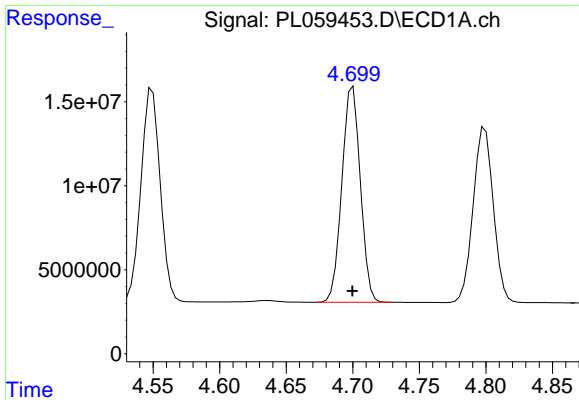
#5 Aldrin
 R.T.: 5.574 min
 Delta R.T.: 0.002 min
 Response: 181327134
 Conc: 58.88 ng/ml



#6 beta-BHC
 R.T.: 4.493 min
 Delta R.T.: 0.000 min
 Response: 56249656
 Conc: 59.07 ng/ml

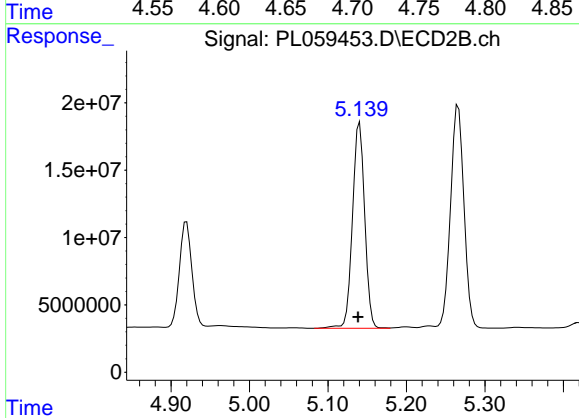


#6 beta-BHC
 R.T.: 4.920 min
 Delta R.T.: 0.001 min
 Response: 84709829
 Conc: 62.28 ng/ml

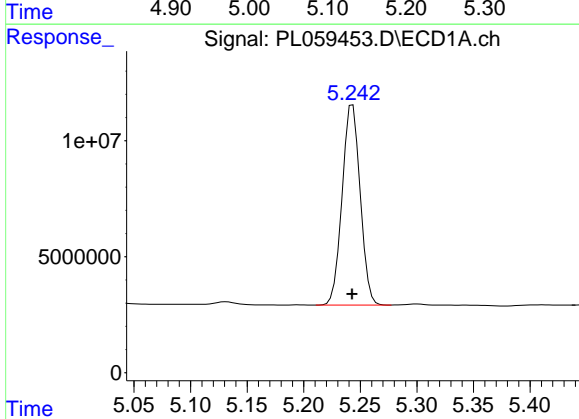


#7 delta-BHC
 R.T.: 4.700 min
 Delta R.T.: 0.000 min
 Response: 123916768
 Conc: 60.75 ng/ml

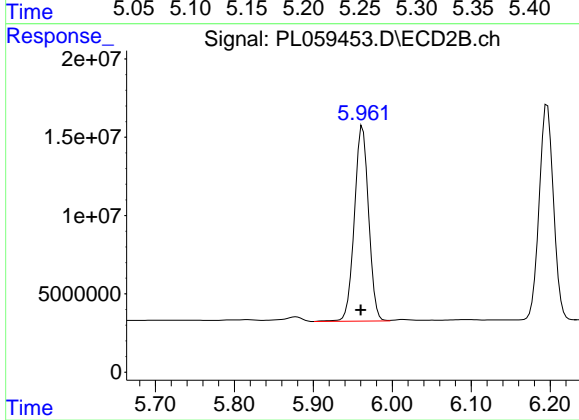
Instrument :
 ECD_L
 ClientSampleId :
 SLUDGE-BOXMSD



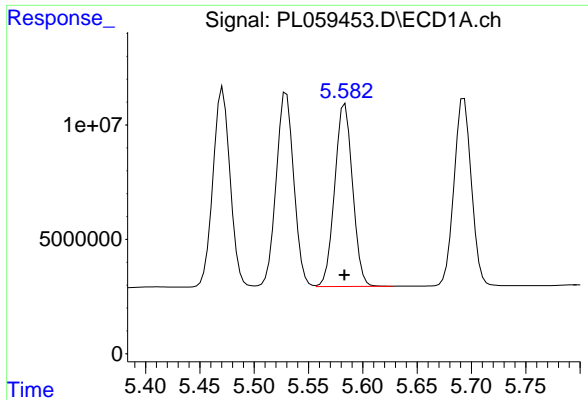
#7 delta-BHC
 R.T.: 5.140 min
 Delta R.T.: 0.002 min
 Response: 165527056
 Conc: 59.49 ng/ml



#8 Heptachlor epoxide
 R.T.: 5.243 min
 Delta R.T.: 0.000 min
 Response: 95808605
 Conc: 63.74 ng/ml

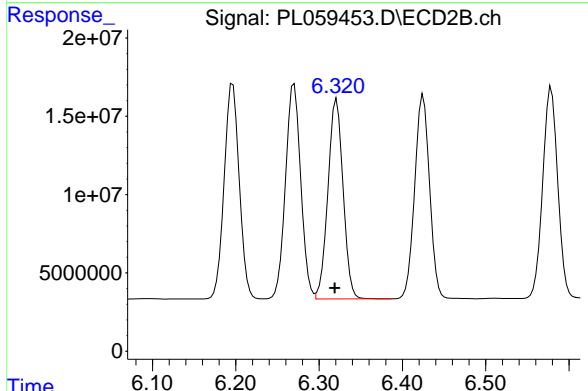


#8 Heptachlor epoxide
 R.T.: 5.962 min
 Delta R.T.: 0.002 min
 Response: 155831684
 Conc: 62.09 ng/ml

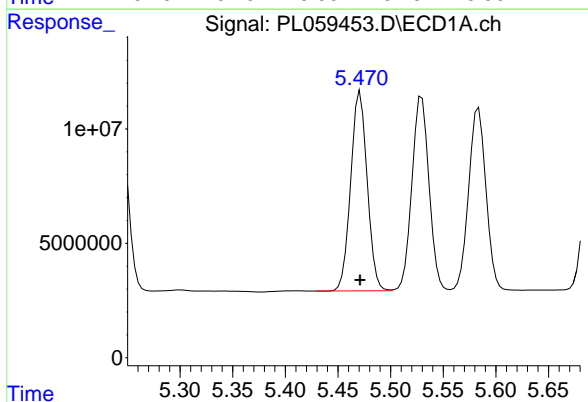


#9 Endosulfan I
 R.T.: 5.584 min
 Delta R.T.: 0.000 min
 Response: 91317859
 Conc: 62.07 ng/ml

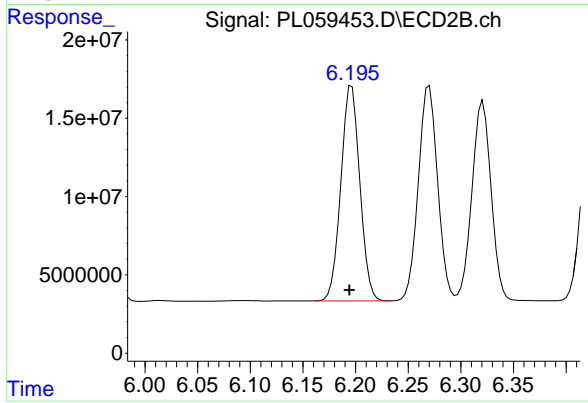
Instrument :
 ECD_L
ClientSampleId :
 SLUDGE-BOXMSD



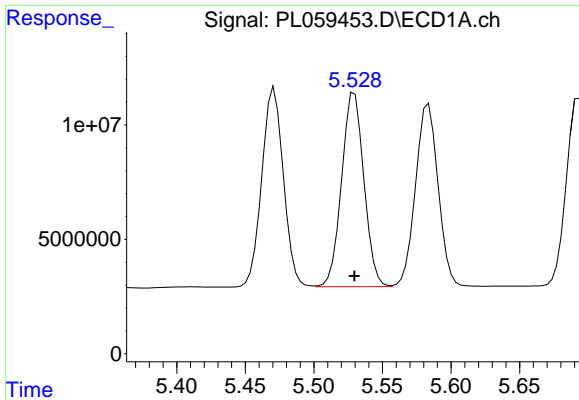
#9 Endosulfan I
 R.T.: 6.321 min
 Delta R.T.: 0.002 min
 Response: 161408521
 Conc: 59.47 ng/ml



#10 gamma-Chlordane
 R.T.: 5.471 min
 Delta R.T.: 0.000 min
 Response: 95410746
 Conc: 62.21 ng/ml



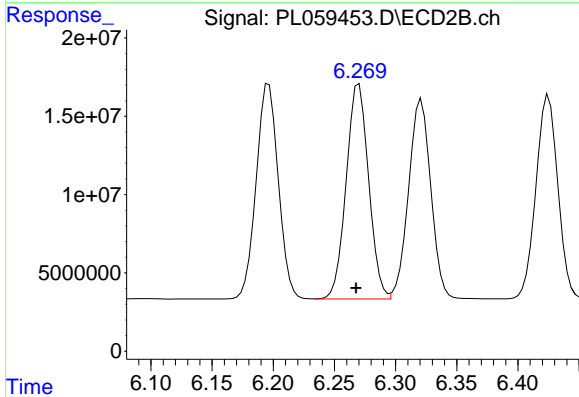
#10 gamma-Chlordane
 R.T.: 6.196 min
 Delta R.T.: 0.002 min
 Response: 172739365
 Conc: 58.97 ng/ml



#11 alpha-Chlordane

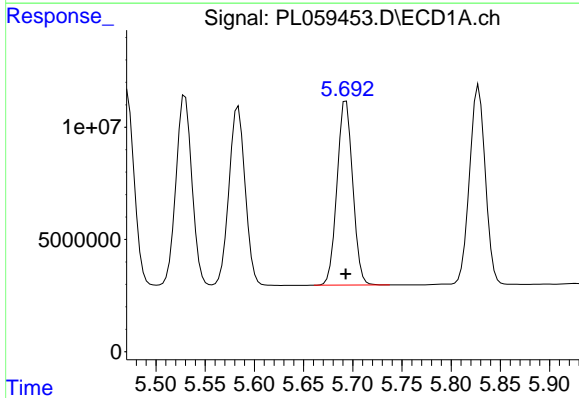
R.T.: 5.530 min
 Delta R.T.: 0.000 min
 Response: 95948537
 Conc: 61.74 ng/ml

Instrument :
 ECD_L
ClientSampleId :
 SLUDGE-BOXMSD



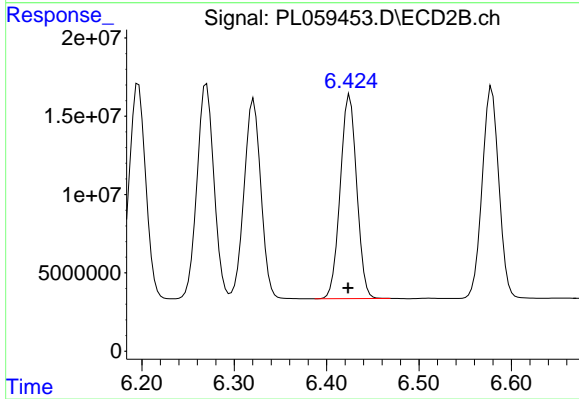
#11 alpha-Chlordane

R.T.: 6.270 min
 Delta R.T.: 0.002 min
 Response: 175149197
 Conc: 59.48 ng/ml



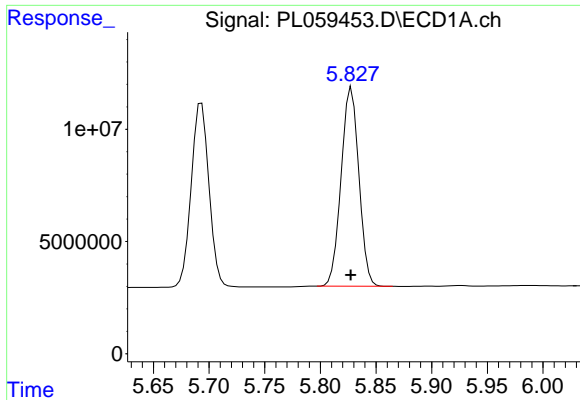
#12 4,4'-DDE

R.T.: 5.693 min
 Delta R.T.: 0.000 min
 Response: 91102800
 Conc: 62.70 ng/ml



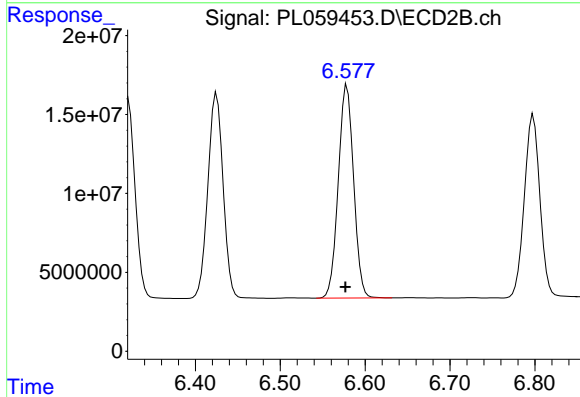
#12 4,4'-DDE

R.T.: 6.425 min
 Delta R.T.: 0.002 min
 Response: 161616700
 Conc: 59.84 ng/ml

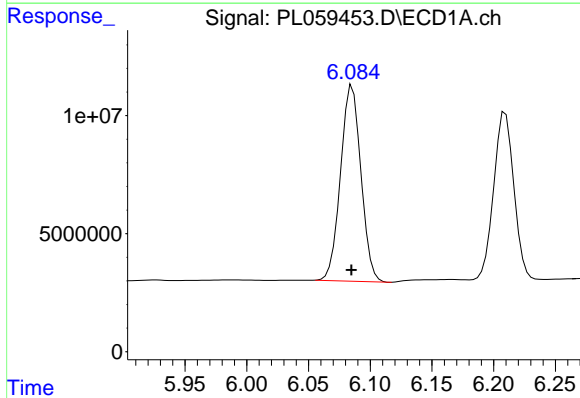


#13 Dieldrin
 R.T.: 5.828 min
 Delta R.T.: 0.000 min
 Response: 98301123
 Conc: 62.31 ng/ml

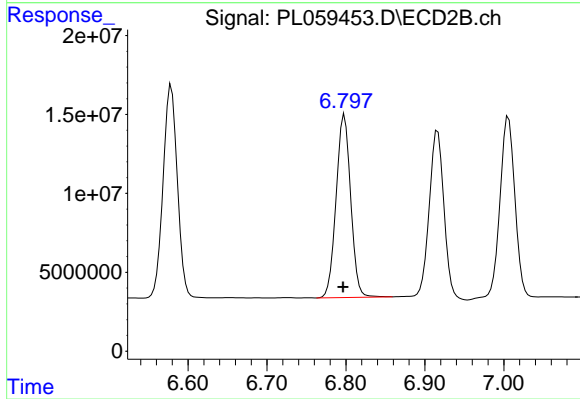
Instrument :
 ECD_L
ClientSampleId :
 SLUDGE-BOXMSD



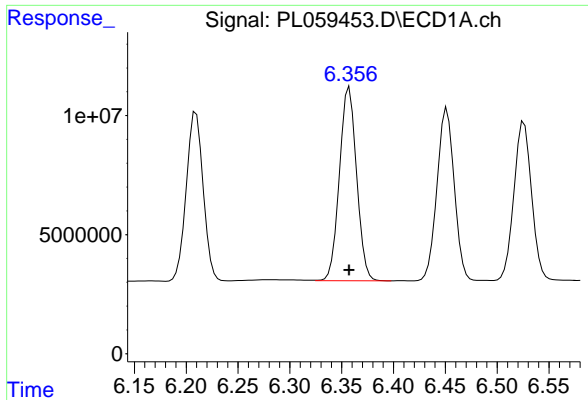
#13 Dieldrin
 R.T.: 6.579 min
 Delta R.T.: 0.002 min
 Response: 169297746
 Conc: 60.14 ng/ml



#14 Endrin
 R.T.: 6.086 min
 Delta R.T.: 0.000 min
 Response: 95396945
 Conc: 62.79 ng/ml

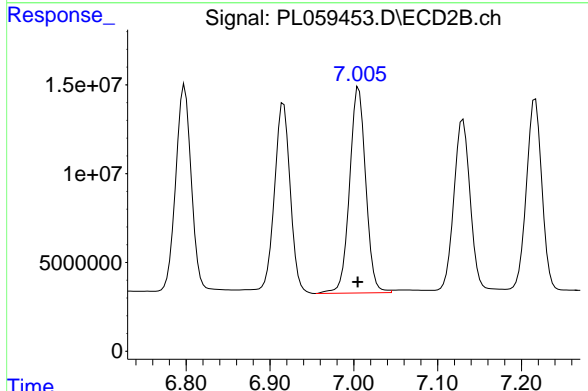


#14 Endrin
 R.T.: 6.798 min
 Delta R.T.: 0.002 min
 Response: 148543228
 Conc: 60.13 ng/ml

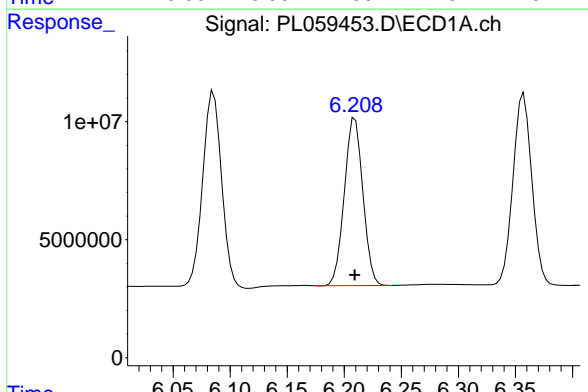


#15 Endosulfan II
 R.T.: 6.357 min
 Delta R.T.: 0.000 min
 Response: 93622355
 Conc: 60.63 ng/ml

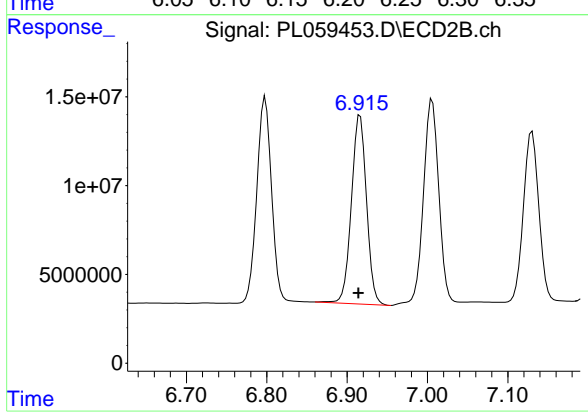
Instrument :
 ECD_L
ClientSampleId :
 SLUDGE-BOXMSD



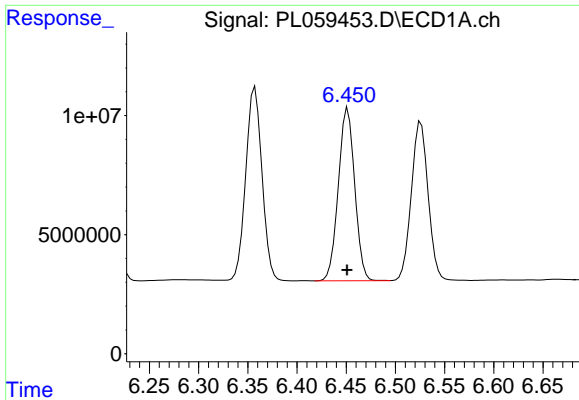
#15 Endosulfan II
 R.T.: 7.006 min
 Delta R.T.: 0.001 min
 Response: 155719283
 Conc: 61.41 ng/ml



#16 4,4'-DDD
 R.T.: 6.210 min
 Delta R.T.: 0.000 min
 Response: 80246036
 Conc: 61.49 ng/ml



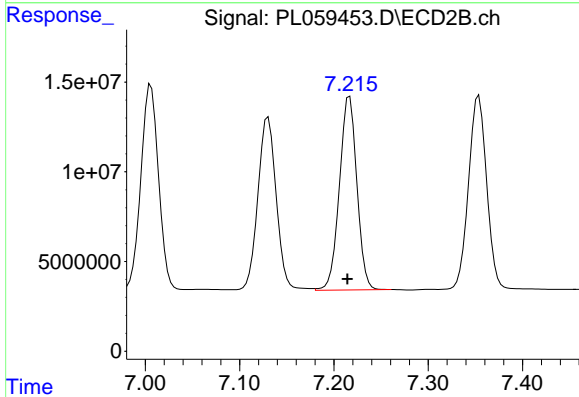
#16 4,4'-DDD
 R.T.: 6.916 min
 Delta R.T.: 0.002 min
 Response: 139086834
 Conc: 62.51 ng/ml



#17 4,4'-DDT

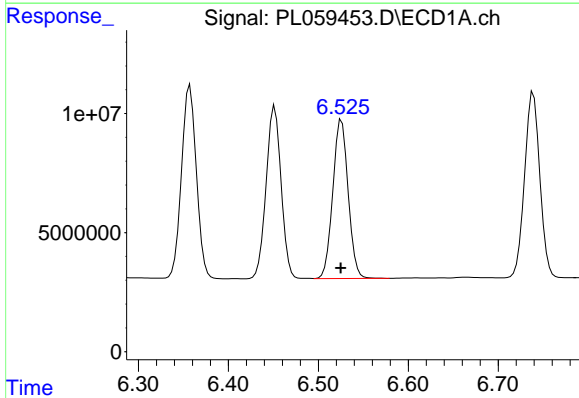
R.T.: 6.452 min
 Delta R.T.: 0.000 min
 Response: 83988171
 Conc: 63.70 ng/ml

Instrument :
 ECD_L
 ClientSampleId :
 SLUDGE-BOXMSD



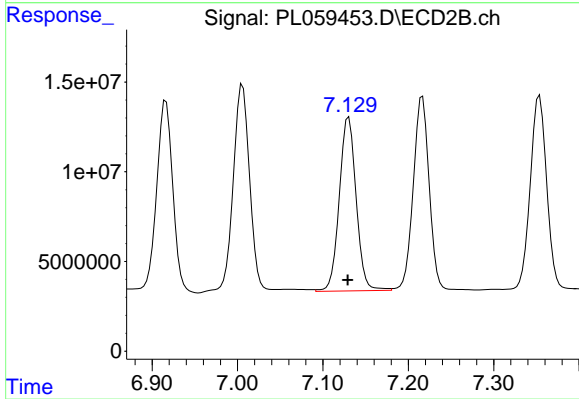
#17 4,4'-DDT

R.T.: 7.217 min
 Delta R.T.: 0.002 min
 Response: 138921786
 Conc: 61.12 ng/ml



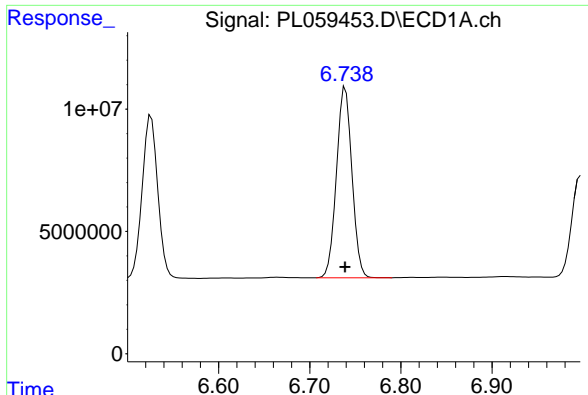
#18 Endrin aldehyde

R.T.: 6.526 min
 Delta R.T.: 0.000 min
 Response: 79295138
 Conc: 60.00 ng/ml



#18 Endrin aldehyde

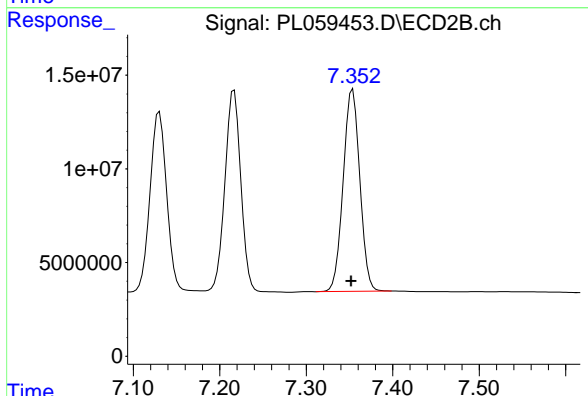
R.T.: 7.130 min
 Delta R.T.: 0.001 min
 Response: 133089227
 Conc: 60.68 ng/ml



#19 Endosulfan Sulfate

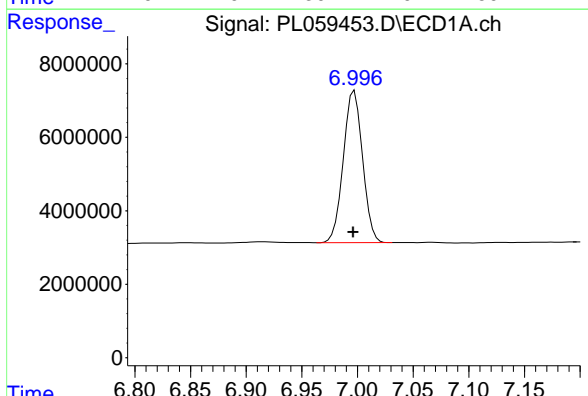
R.T.: 6.739 min
 Delta R.T.: 0.000 min
 Response: 92024359
 Conc: 60.61 ng/ml

Instrument :
 ECD_L
 ClientSampleId :
 SLUDGE-BOXMSD



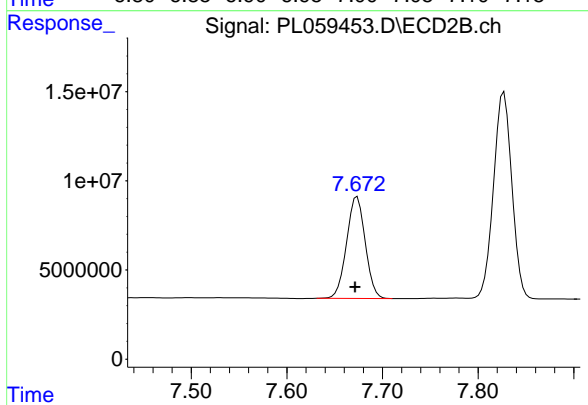
#19 Endosulfan Sulfate

R.T.: 7.354 min
 Delta R.T.: 0.002 min
 Response: 143402144
 Conc: 59.25 ng/ml



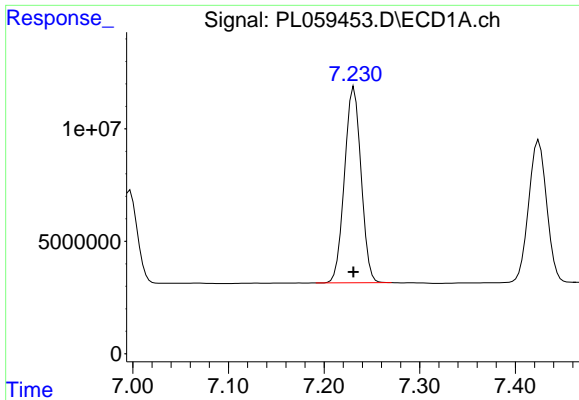
#20 Methoxychlor

R.T.: 6.997 min
 Delta R.T.: 0.001 min
 Response: 49756973
 Conc: 61.40 ng/ml



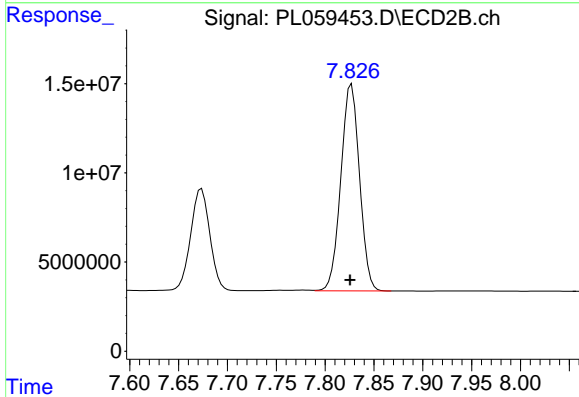
#20 Methoxychlor

R.T.: 7.674 min
 Delta R.T.: 0.002 min
 Response: 77675669
 Conc: 58.51 ng/ml

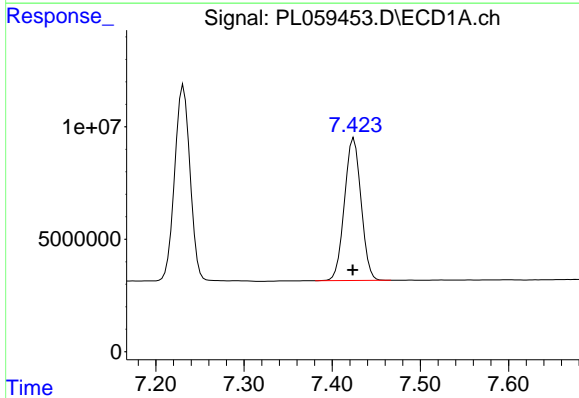


#21 Endrin ketone
 R.T.: 7.231 min
 Delta R.T.: 0.000 min
 Response: 105186684
 Conc: 60.33 ng/ml

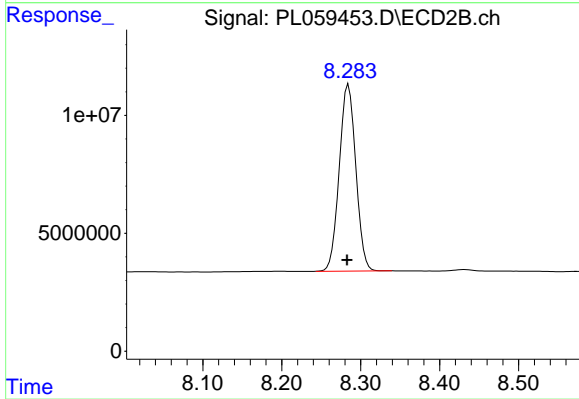
Instrument :
 ECD_L
 ClientSampleId :
 SLUDGE-BOXMSD



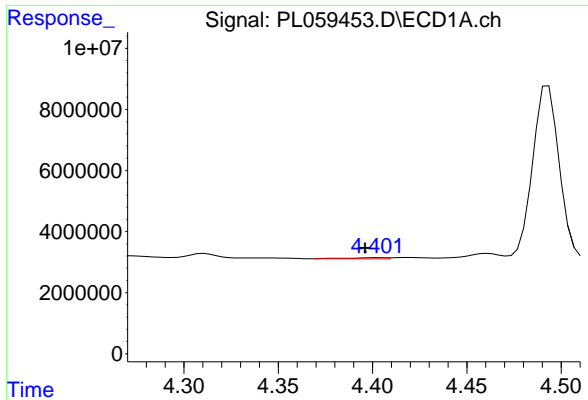
#21 Endrin ketone
 R.T.: 7.827 min
 Delta R.T.: 0.002 min
 Response: 154443770
 Conc: 59.79 ng/ml



#22 Mirex
 R.T.: 7.425 min
 Delta R.T.: 0.001 min
 Response: 82859836
 Conc: 58.68 ng/ml

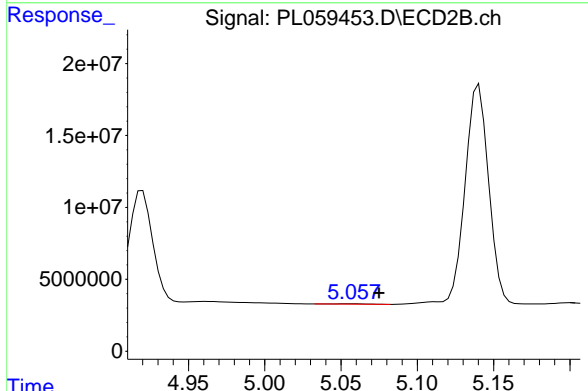


#22 Mirex
 R.T.: 8.285 min
 Delta R.T.: 0.002 min
 Response: 115377347
 Conc: 58.41 ng/ml

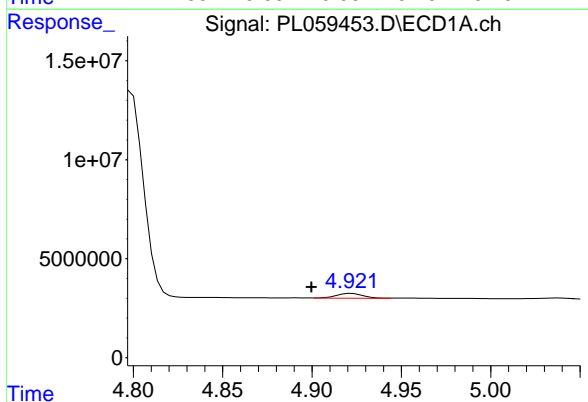


#23 Chlordane-1
 R.T.: 4.403 min
 Delta R.T.: 0.007 min
 Response: 568667
 Conc: 9.99 ng/ml

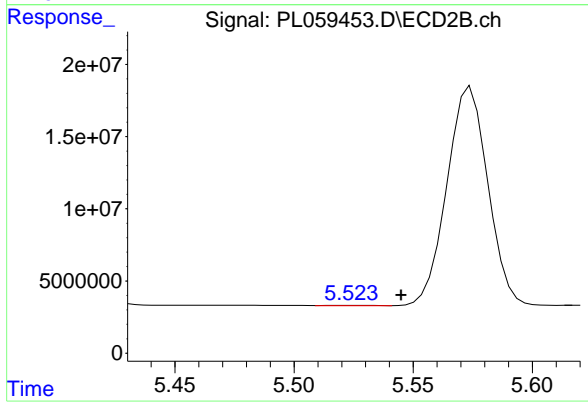
Instrument :
 ECD_L
 ClientSampleId :
 SLUDGE-BOXMSD



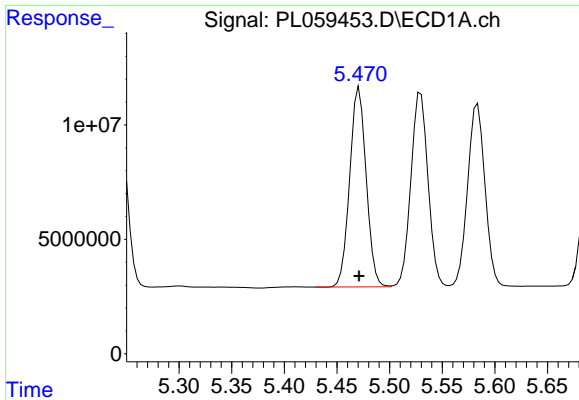
#23 Chlordane-1
 R.T.: 5.058 min
 Delta R.T.: -0.017 min
 Response: 393639
 Conc: 3.90 ng/ml



#24 Chlordane-2
 R.T.: 4.922 min
 Delta R.T.: 0.023 min
 Response: 2536688
 Conc: 46.74 ng/ml

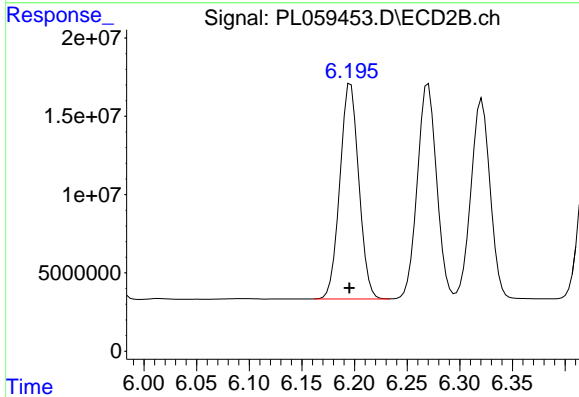


#24 Chlordane-2
 R.T.: 5.524 min
 Delta R.T.: -0.021 min
 Response: 279460
 Conc: 2.55 ng/ml

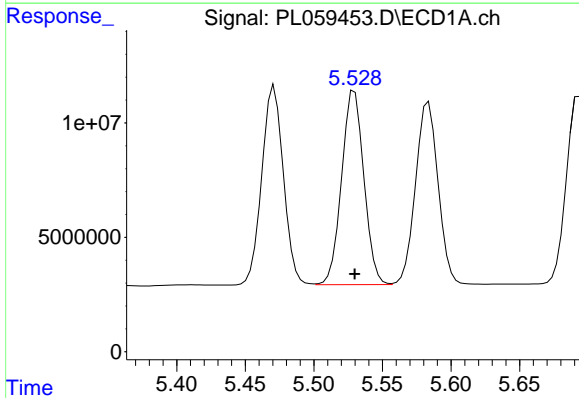


#25 Chlordane-3
 R.T.: 5.471 min
 Delta R.T.: 0.000 min
 Response: 95410746
 Conc: 674.06 ng/ml

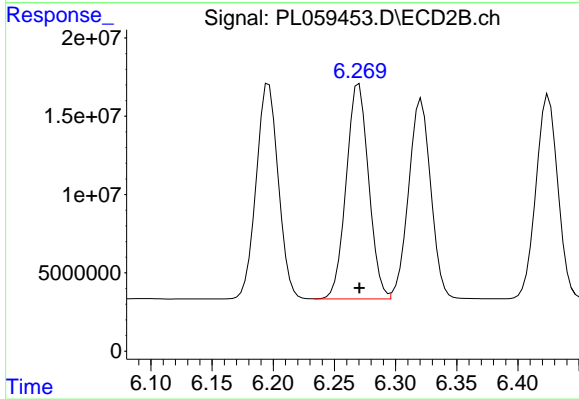
Instrument :
 ECD_L
ClientSampleId :
 SLUDGE-BOXMSD



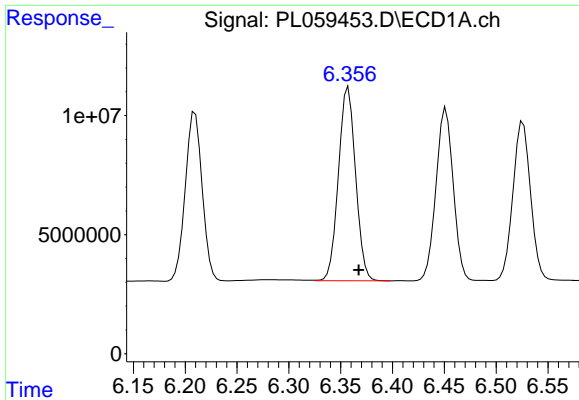
#25 Chlordane-3
 R.T.: 6.196 min
 Delta R.T.: 0.001 min
 Response: 172739365
 Conc: 440.57 ng/ml



#26 Chlordane-4
 R.T.: 5.530 min
 Delta R.T.: 0.000 min
 Response: 95948537
 Conc: 812.75 ng/ml



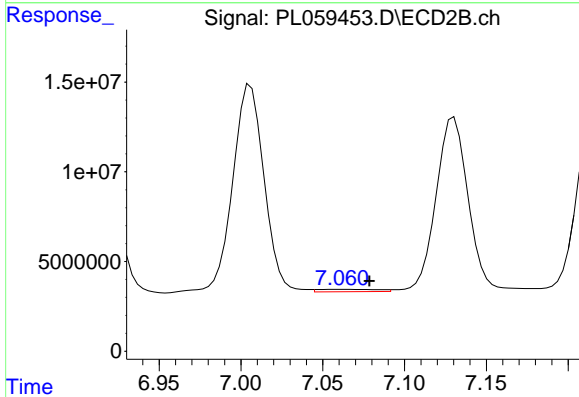
#26 Chlordane-4
 R.T.: 6.270 min
 Delta R.T.: 0.000 min
 Response: 175149197
 Conc: 368.62 ng/ml



#27 Chlordane-5

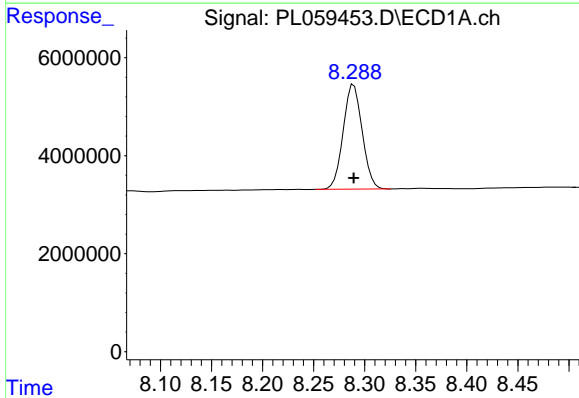
R.T.: 6.357 min
 Delta R.T.: -0.010 min
 Response: 93622355
 Conc: 1668.28 ng/ml

Instrument :
 ECD_L
ClientSampleId :
 SLUDGE-BOXMSD



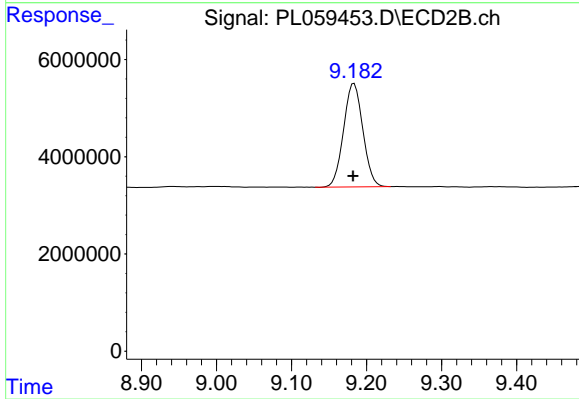
#27 Chlordane-5

R.T.: 7.061 min
 Delta R.T.: -0.017 min
 Response: 3331539
 Conc: 38.48 ng/ml



#28 Decachlorobiphenyl

R.T.: 8.289 min
 Delta R.T.: 0.000 min
 Response: 27679607
 Conc: 16.26 ng/ml



#28 Decachlorobiphenyl

R.T.: 9.183 min
 Delta R.T.: 0.001 min
 Response: 38006846
 Conc: 16.60 ng/ml