

Data Path : Z:\pestpcbsrv\HPCHEM1\ECD_L\Data\PL062420\
 Data File : PL059459.D
 Signal(s) : Signal #1: ECD1A.ch Signal #2: ECD2B.ch
 Acq On : 24 Jun 2020 13:25
 Operator : AJ\MA
 Sample : PB129730BL
 Misc :
 ALS Vial : 6 Sample Multiplier: 1

Instrument :
 ECD_L
 ClientSampled :

Integration File signal 1: autoint1.e
 Integration File signal 2: autoint2.e
 Quant Time: Jun 24 16:55:21 2020
 Quant Method : Z:\pestpcbsrv\HPCHEM1\ECD_L\methods\PL062220.M
 Quant Title : GC Extractables
 QLast Update : Mon Jun 22 14:09:48 2020
 Response via : Initial Calibration
 Integrator: ChemStation

Volume Inj. : 1 µl
 Signal #1 Phase : ZB-MR2 Signal #2 Phase: ZB-MR1
 Signal #1 Info : 30M x 0.32mm x0.2 Signal #2 Info : 30M x 0.32mm x0.5µm

	Compound	RT#1	RT#2	Resp#1	Resp#2	ng/ml	ng/ml

System Monitoring Compounds							
1)	SA Tetrachlo...	3.518	4.071	39909774	58525468	22.208	22.676
28)	SA Decachlor...	8.291	9.184	39335149	54612034	23.100	23.852
Target Compounds							
2)	A alpha-BHC	3.967	0.000	1057712	0	0.410	N.D. #
4)	MA Heptachlor	0.000	5.263	0	3024171	N.D.	0.934 #
5)	MB Aldrin	0.000	5.589f	0	369102	N.D.	0.120 #
7)	B delta-BHC	0.000	5.113f	0	1511115	N.D.	0.543 #
8)	B Heptachlo...	5.240	0.000	118870	0	0.079	N.D. #
9)	A Endosulfan I	0.000	6.315	0	130168	N.D.	0.048 #
10)	B gamma-Chl...	5.500f	0.000	91777	0	0.060	N.D. #
11)	B alpha-Chl...	5.500f	0.000	91777	0	0.059	N.D. #
15)	B Endosulfa...	6.366	7.010	98677	1657435	0.064	0.654 #
17)	MA 4,4'-DDT	6.442	7.222	37366	733598	0.028	0.323 #
18)	B Endrin al...	6.531	7.125	85478	192569	0.065	0.088 #
21)	B Endrin ke...	7.222	0.000	1474632	0	0.846	N.D. #
22)	Mirex	0.000	8.287	0	176130	N.D.	0.089 #
23)	Chlordane-1	4.422f	0.000	606397	0	10.656	N.D. #
24)	Chlordane-2	0.000	5.535	0	223995	N.D.	2.041 #
25)	Chlordane-3	5.500f	0.000	91777	0	0.648	N.D. #
26)	Chlordane-4	5.500f	0.000	91777	0	0.777	N.D. #
27)	Chlordane-5	6.366	7.072	98677	403030	1.758	4.655 #

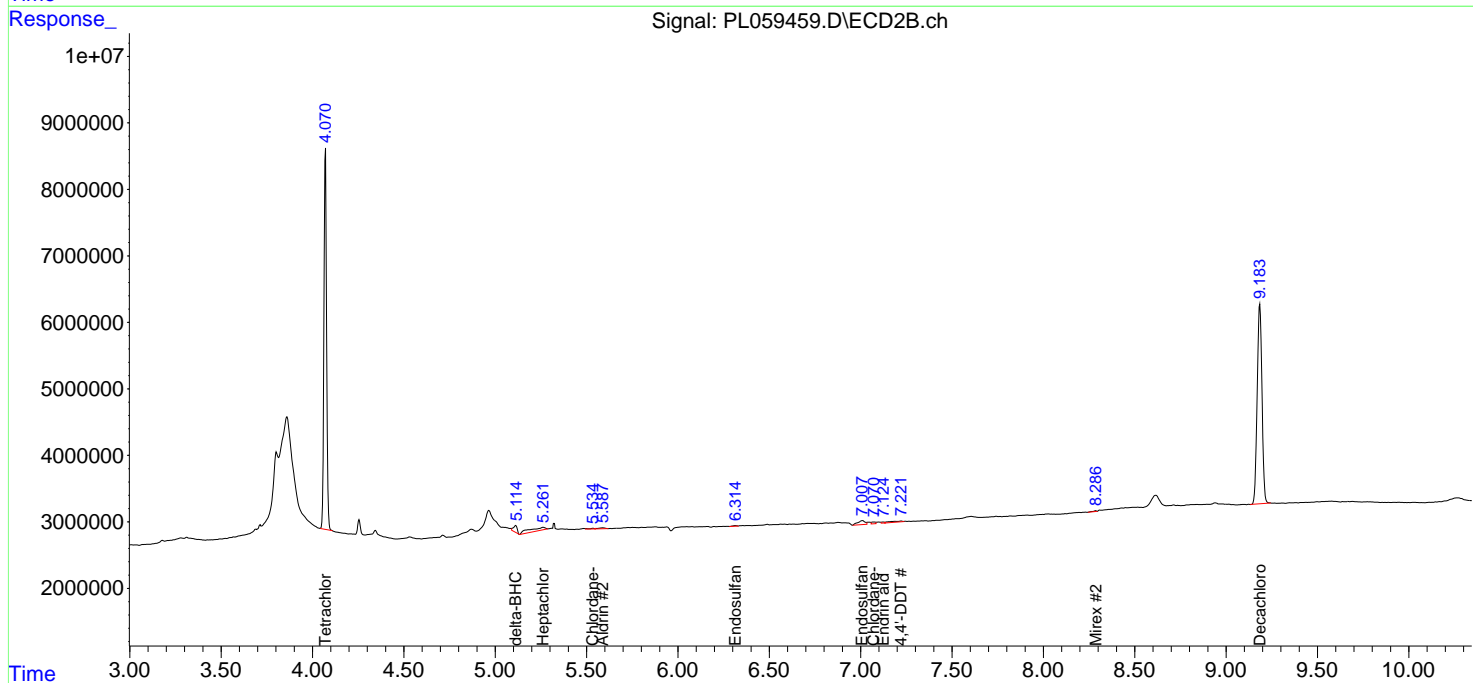
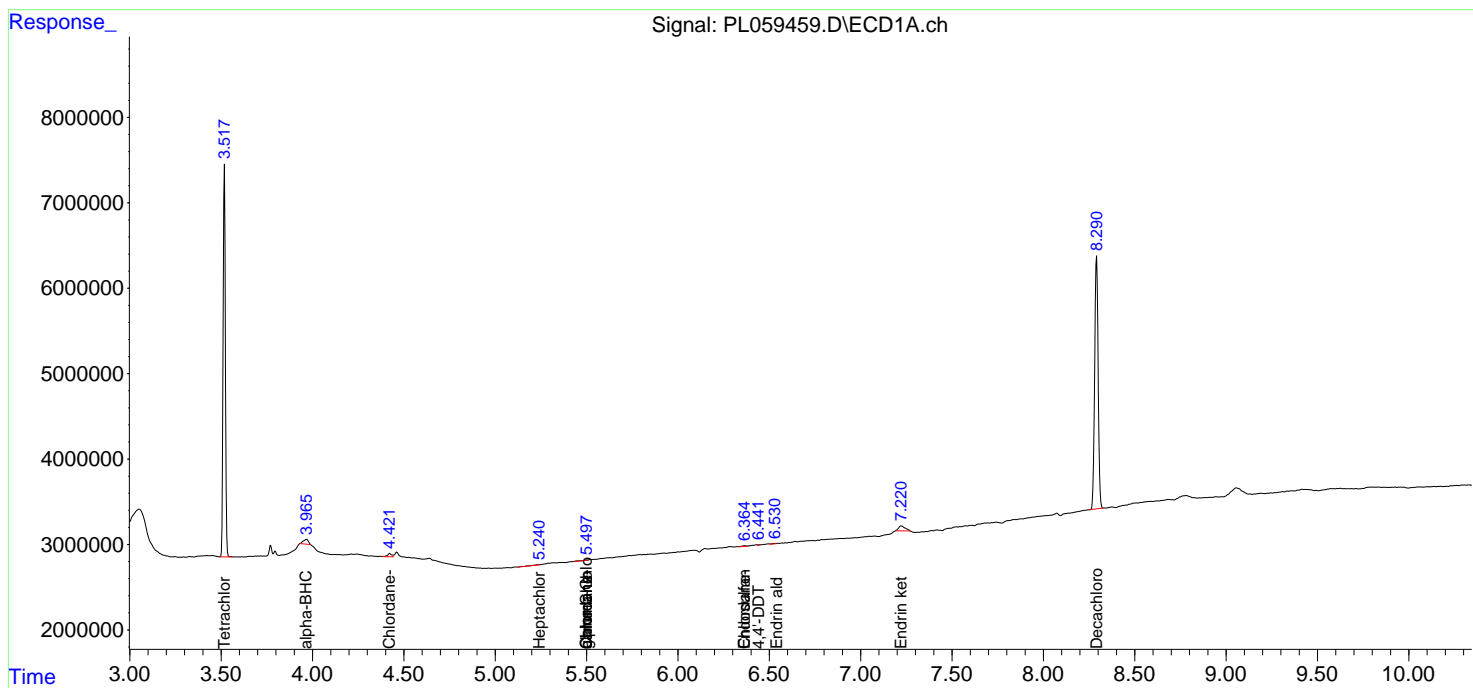
(f)=RT Delta > 1/2 Window (#)=Amounts differ by > 25% (m)=manual int.

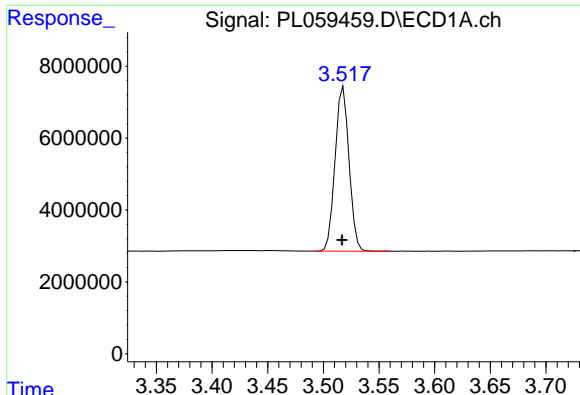
Data Path : Z:\pestpcbsrv\HPCHEM1\ECD_L\Data\PL062420\
 Data File : PL059459.D
 Signal(s) : Signal #1: ECD1A.ch Signal #2: ECD2B.ch
 Acq On : 24 Jun 2020 13:25
 Operator : AJ\MA
 Sample : PB129730BL
 Misc :
 ALS Vial : 6 Sample Multiplier: 1

Instrument :
 ECD_L
 ClientSampled :

Integration File signal 1: autoint1.e
 Integration File signal 2: autoint2.e
 Quant Time: Jun 24 16:55:21 2020
 Quant Method : Z:\pestpcbsrv\HPCHEM1\ECD_L\methods\PL062220.M
 Quant Title : GC Extractables
 QLast Update : Mon Jun 22 14:09:48 2020
 Response via : Initial Calibration
 Integrator: ChemStation

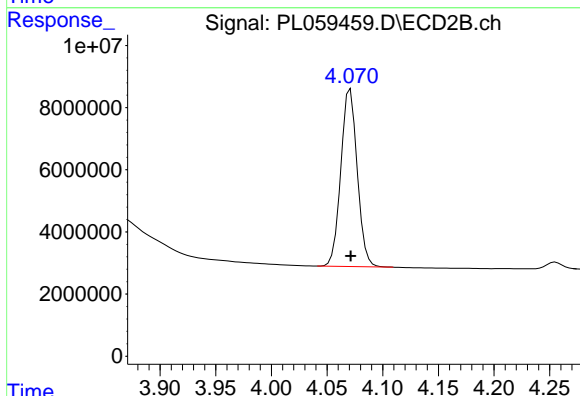
Volume Inj. : 1 µl
 Signal #1 Phase : ZB-MR2 Signal #2 Phase: ZB-MR1
 Signal #1 Info : 30M x 0.32mm x0.2 Signal #2 Info : 30M x 0.32mm x0.5µm



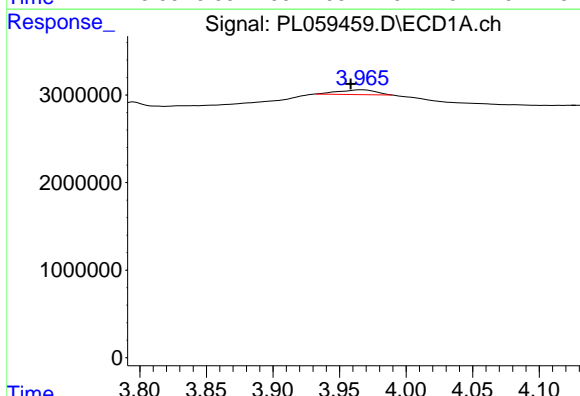


#1 Tetrachloro-m-xylene
 R.T.: 3.518 min
 Delta R.T.: 0.001 min
 Response: 39909774
 Conc: 22.21 ng/ml

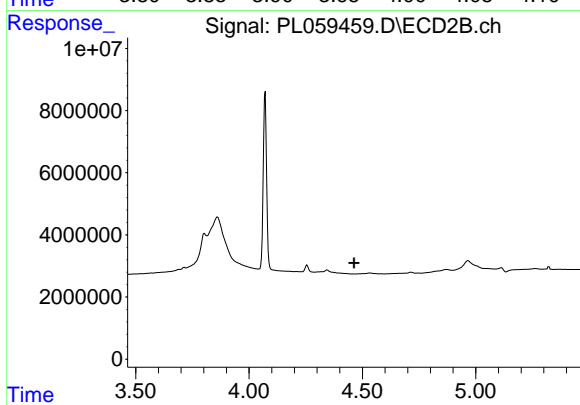
Instrument :
 ECD_L
 ClientSampled :



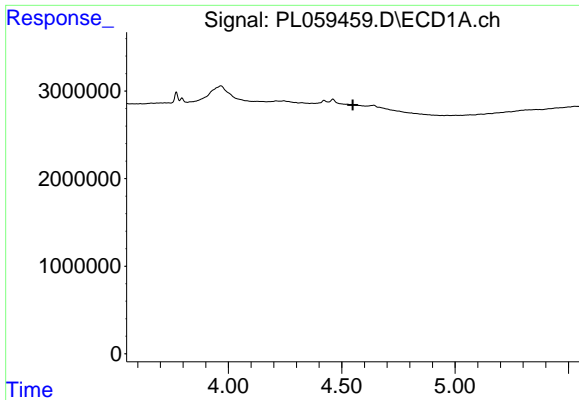
#1 Tetrachloro-m-xylene
 R.T.: 4.071 min
 Delta R.T.: 0.000 min
 Response: 58525468
 Conc: 22.68 ng/ml



#2 alpha-BHC
 R.T.: 3.967 min
 Delta R.T.: 0.008 min
 Response: 1057712
 Conc: 0.41 ng/ml



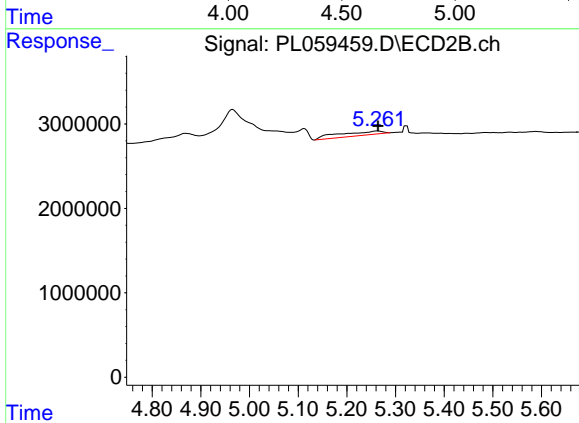
#2 alpha-BHC
 R.T.: 0.000 min
 Exp R.T. : 4.463 min
 Response: 0
 Conc: N.D.



#4 Heptachlor

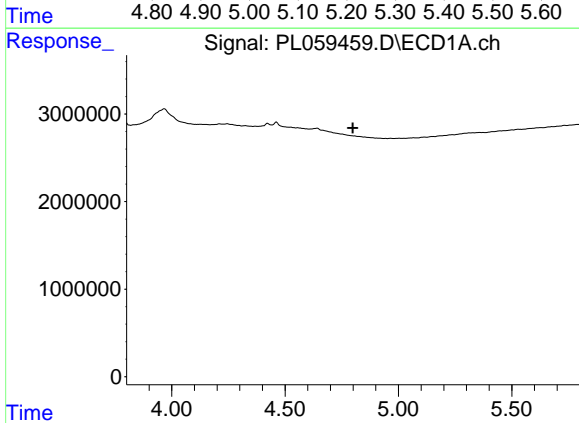
R.T.: 0.000 min
 Exp R.T. : 4.549 min
 Response: 0
 Conc: N.D.

Instrument :
 ECD_L
 ClientSampled :



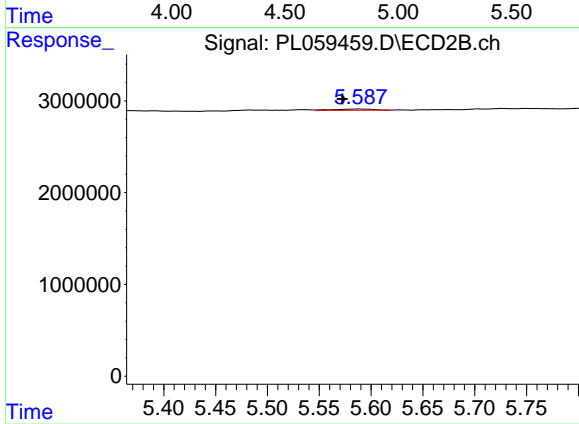
#4 Heptachlor

R.T.: 5.263 min
 Delta R.T.: -0.002 min
 Response: 3024171
 Conc: 0.93 ng/ml



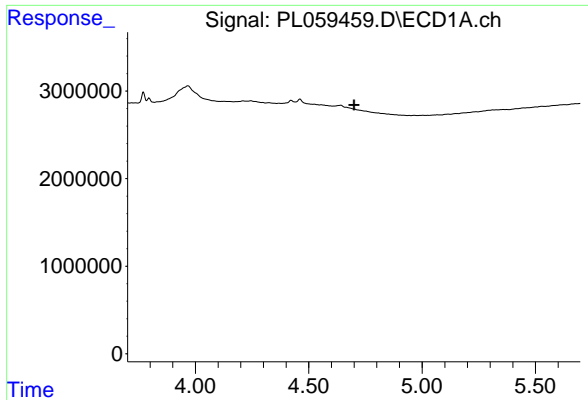
#5 Aldrin

R.T.: 0.000 min
 Exp R.T. : 4.799 min
 Response: 0
 Conc: N.D.



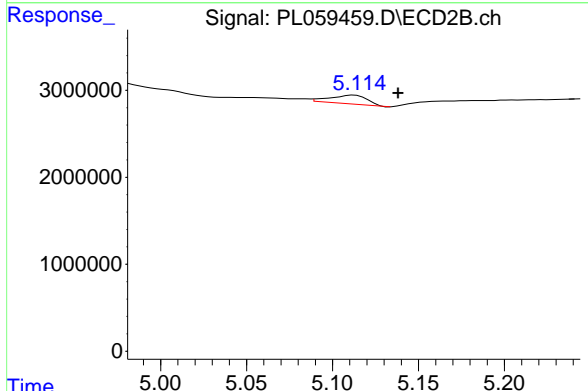
#5 Aldrin

R.T.: 5.589 min
 Delta R.T.: 0.017 min
 Response: 369102
 Conc: 0.12 ng/ml

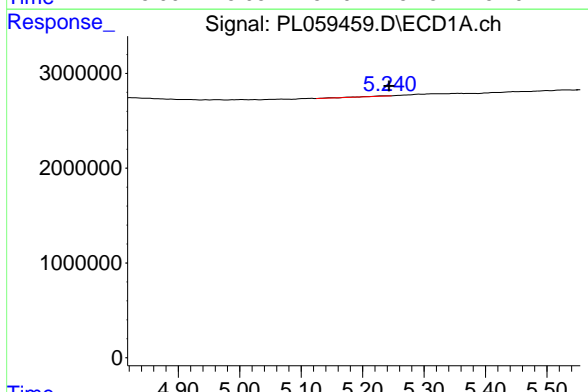


#7 delta-BHC
 R.T.: 0.000 min
 Exp R.T.: 4.700 min
 Response: 0
 Conc: N.D.

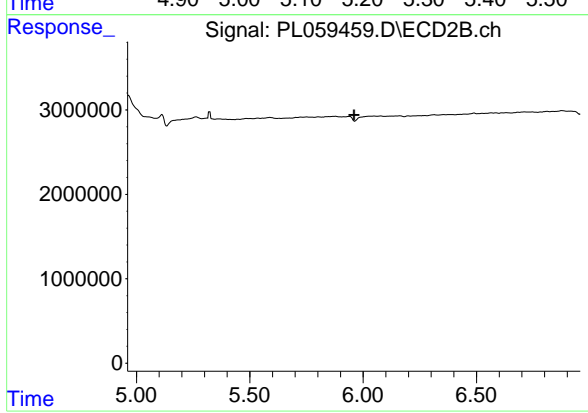
Instrument :
 ECD_L
 ClientSampleId :



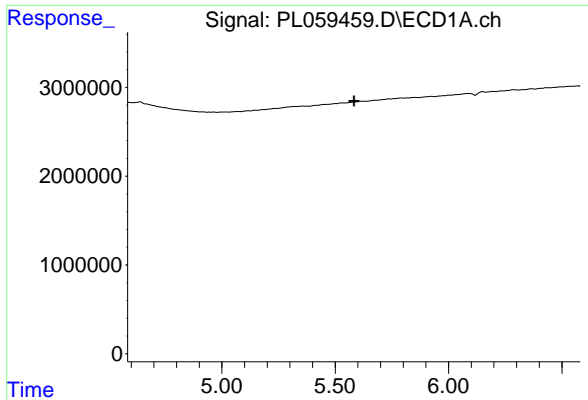
#7 delta-BHC
 R.T.: 5.113 min
 Delta R.T.: -0.026 min
 Response: 1511115
 Conc: 0.54 ng/ml



#8 Heptachlor epoxide
 R.T.: 5.240 min
 Delta R.T.: -0.003 min
 Response: 118870
 Conc: 0.08 ng/ml

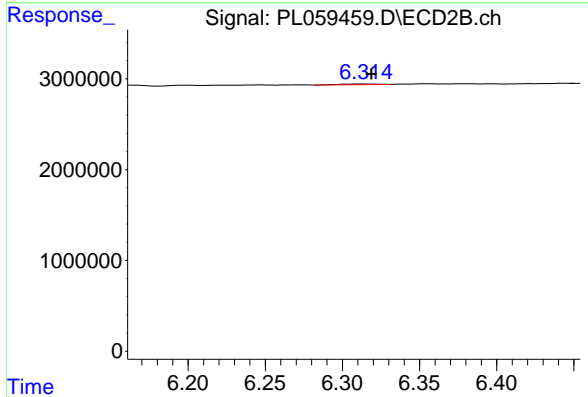


#8 Heptachlor epoxide
 R.T.: 0.000 min
 Exp R.T.: 5.960 min
 Response: 0
 Conc: N.D.

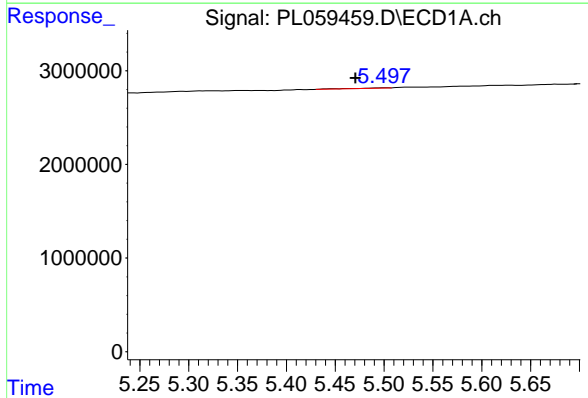


#9 Endosulfan I
 R.T.: 0.000 min
 Exp R.T. : 5.583 min
 Response: 0
 Conc: N.D.

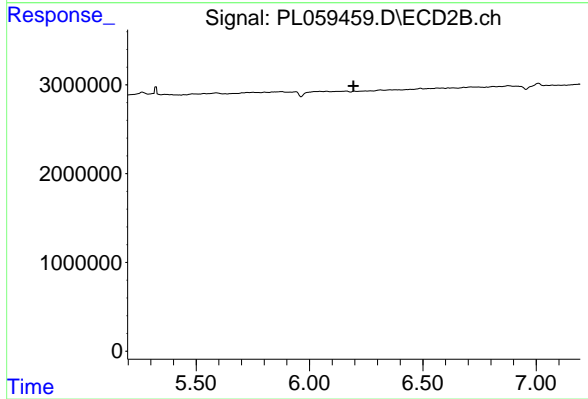
Instrument :
 ECD_L
 ClientSampleId :



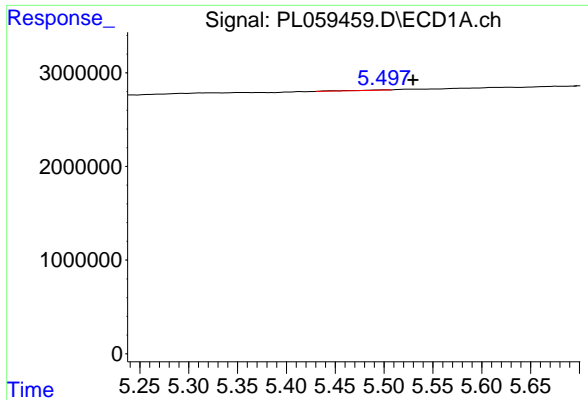
#9 Endosulfan I
 R.T.: 6.315 min
 Delta R.T.: -0.004 min
 Response: 130168
 Conc: 0.05 ng/ml



#10 gamma-Chlordane
 R.T.: 5.500 min
 Delta R.T.: 0.030 min
 Response: 91777
 Conc: 0.06 ng/ml

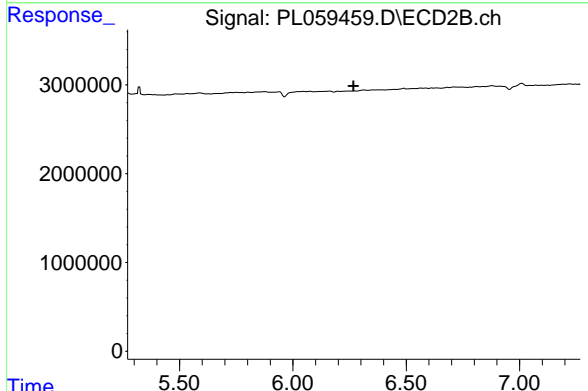


#10 gamma-Chlordane
 R.T.: 0.000 min
 Exp R.T. : 6.194 min
 Response: 0
 Conc: N.D.

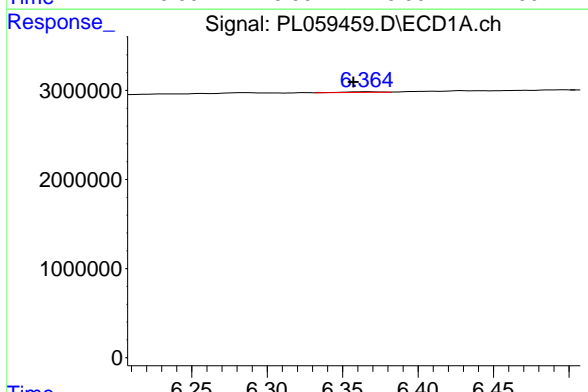


#11 alpha-Chlordane
 R.T.: 5.500 min
 Delta R.T.: -0.029 min
 Response: 91777
 Conc: 0.06 ng/ml

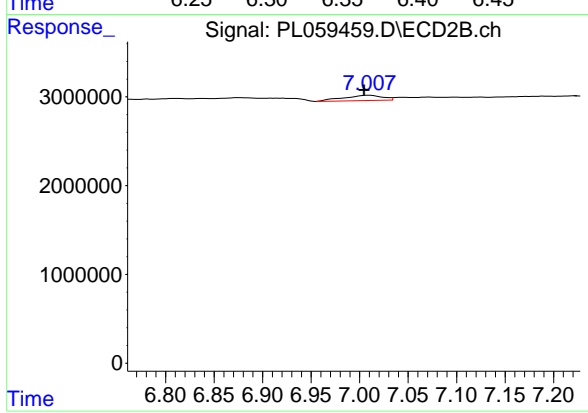
Instrument :
 ECD_L
 ClientSampled :



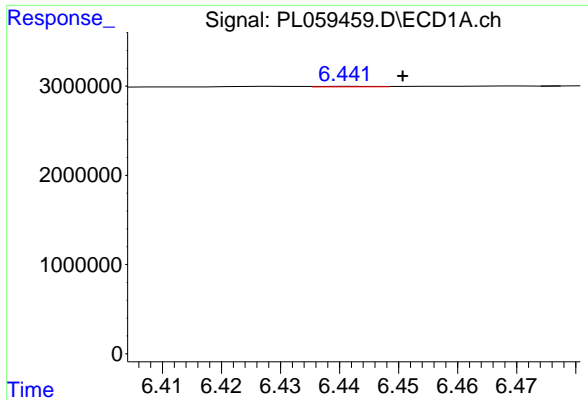
#11 alpha-Chlordane
 R.T.: 0.000 min
 Exp R.T. : 6.268 min
 Response: 0
 Conc: N.D.



#15 Endosulfan II
 R.T.: 6.366 min
 Delta R.T.: 0.009 min
 Response: 98677
 Conc: 0.06 ng/ml

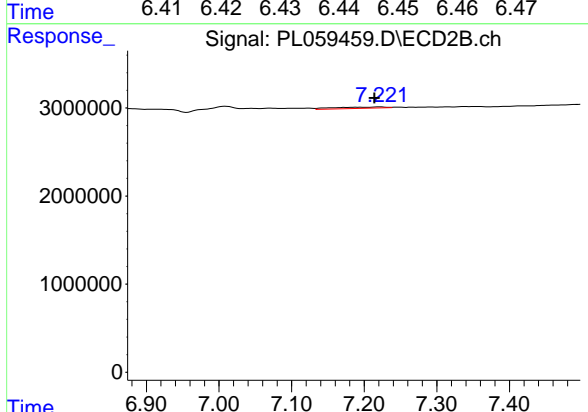


#15 Endosulfan II
 R.T.: 7.010 min
 Delta R.T.: 0.005 min
 Response: 1657435
 Conc: 0.65 ng/ml

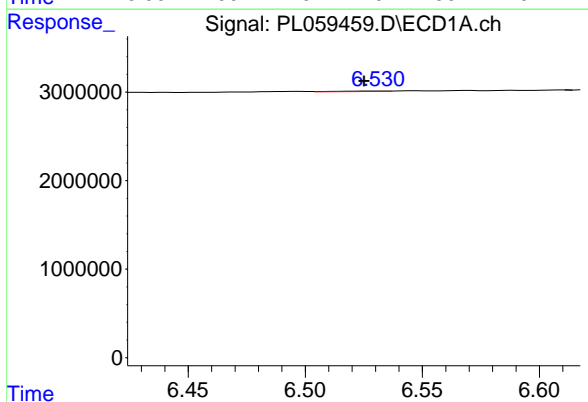


#17 4,4'-DDT
 R.T.: 6.442 min
 Delta R.T.: -0.009 min
 Response: 37366
 Conc: 0.03 ng/ml

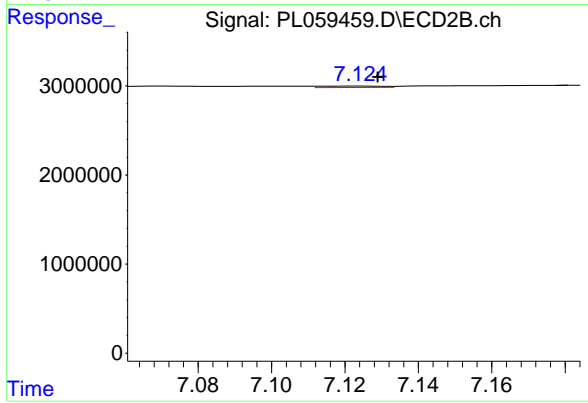
Instrument :
 ECD_L
 ClientSampleId :



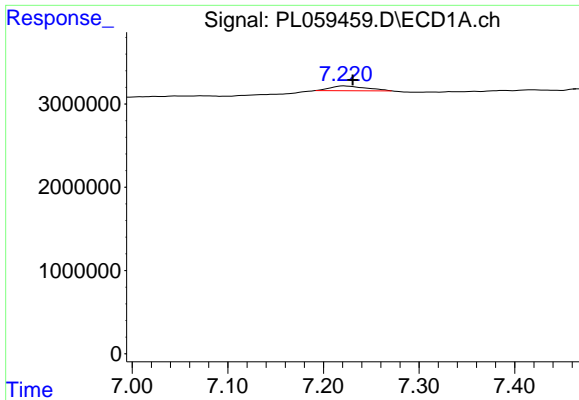
#17 4,4'-DDT
 R.T.: 7.222 min
 Delta R.T.: 0.008 min
 Response: 733598
 Conc: 0.32 ng/ml



#18 Endrin aldehyde
 R.T.: 6.531 min
 Delta R.T.: 0.006 min
 Response: 85478
 Conc: 0.06 ng/ml



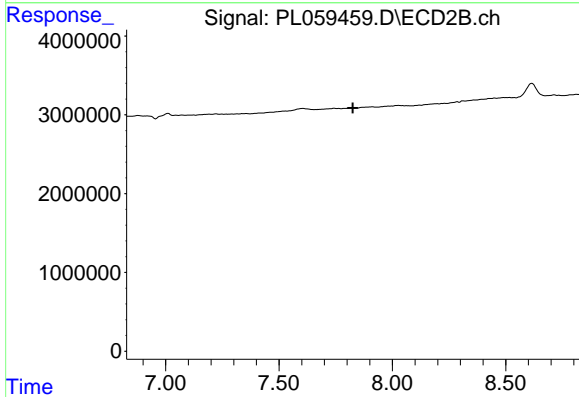
#18 Endrin aldehyde
 R.T.: 7.125 min
 Delta R.T.: -0.004 min
 Response: 192569
 Conc: 0.09 ng/ml



#21 Endrin ketone

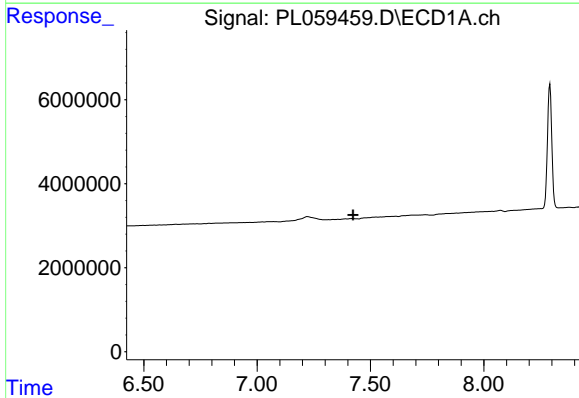
R.T.: 7.222 min
 Delta R.T.: -0.009 min
 Response: 1474632
 Conc: 0.85 ng/ml

Instrument :
 ECD_L
 ClientSampled :



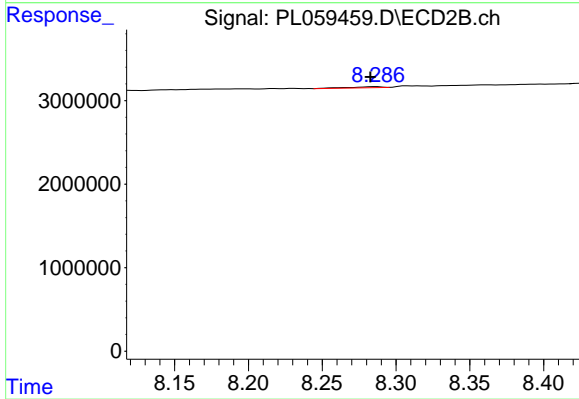
#21 Endrin ketone

R.T.: 0.000 min
 Exp R.T. : 7.826 min
 Response: 0
 Conc: N.D.



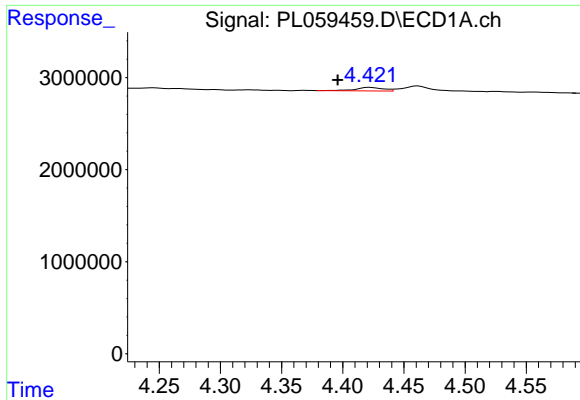
#22 Mirex

R.T.: 0.000 min
 Exp R.T. : 7.423 min
 Response: 0
 Conc: N.D.



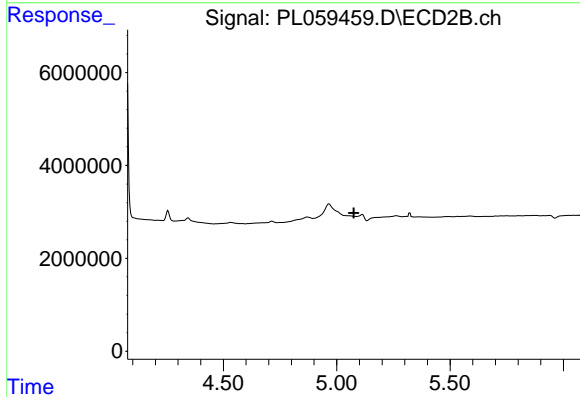
#22 Mirex

R.T.: 8.287 min
 Delta R.T.: 0.005 min
 Response: 176130
 Conc: 0.09 ng/ml

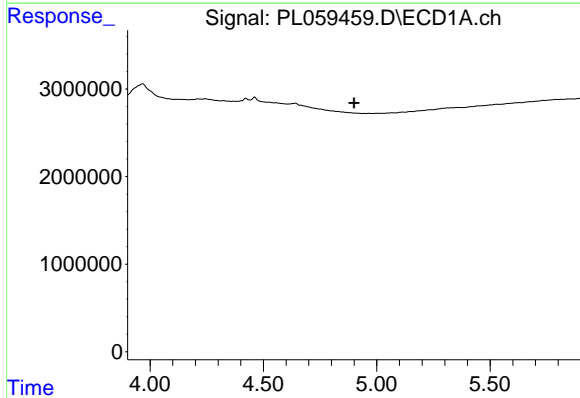


#23 Chlordane-1
 R.T.: 4.422 min
 Delta R.T.: 0.026 min
 Response: 606397
 Conc: 10.66 ng/ml

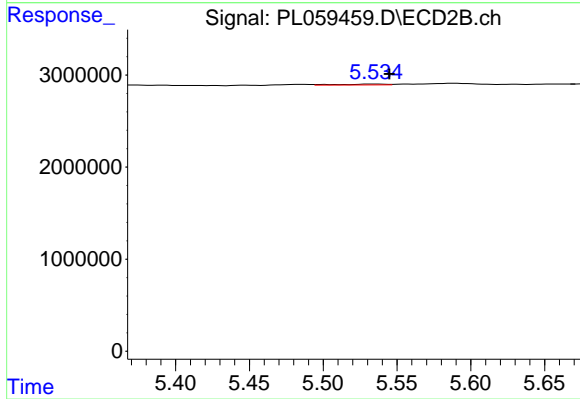
Instrument :
 ECD_L
 ClientSampleId :



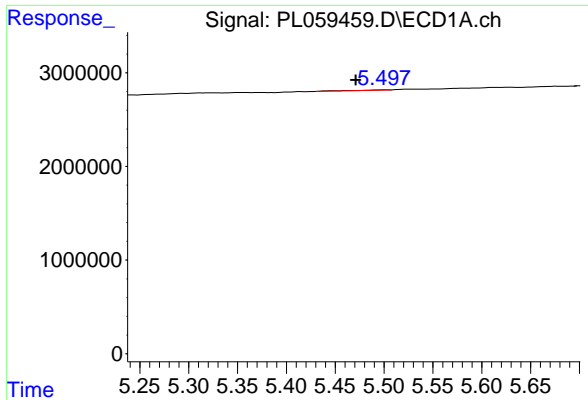
#23 Chlordane-1
 R.T.: 0.000 min
 Exp R.T. : 5.075 min
 Response: 0
 Conc: N.D.



#24 Chlordane-2
 R.T.: 0.000 min
 Exp R.T. : 4.900 min
 Response: 0
 Conc: N.D.

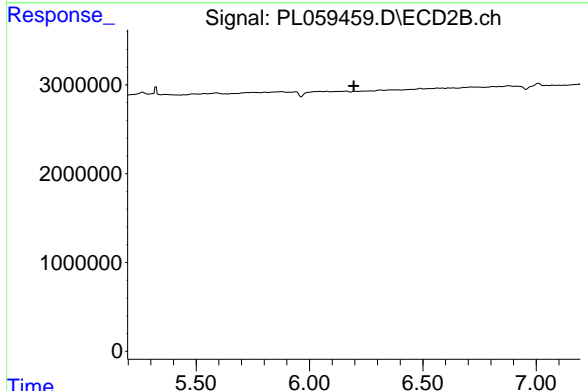


#24 Chlordane-2
 R.T.: 5.535 min
 Delta R.T.: -0.010 min
 Response: 223995
 Conc: 2.04 ng/ml

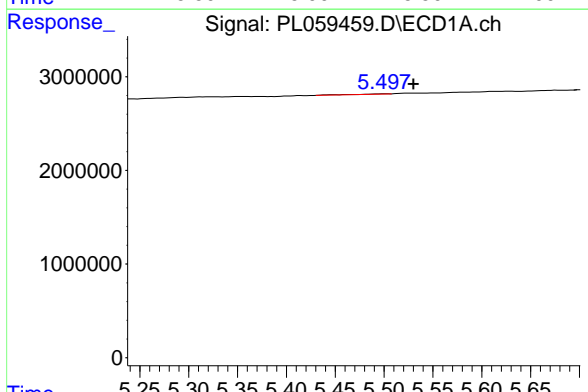


#25 Chlordane-3
 R.T.: 5.500 min
 Delta R.T.: 0.029 min
 Response: 91777
 Conc: 0.65 ng/ml

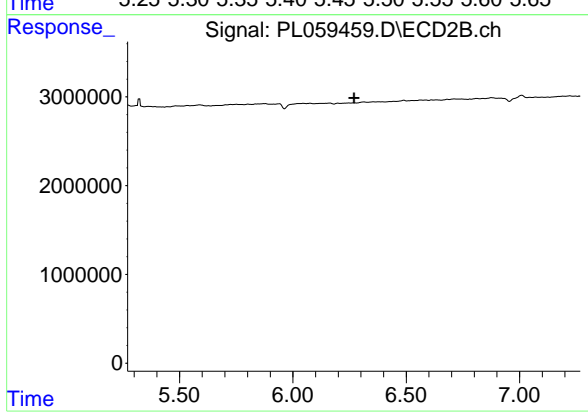
Instrument :
 ECD_L
 ClientSampled :



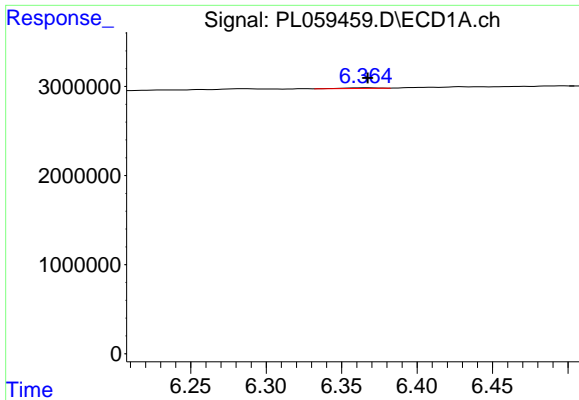
#25 Chlordane-3
 R.T.: 0.000 min
 Exp R.T. : 6.195 min
 Response: 0
 Conc: N.D.



#26 Chlordane-4
 R.T.: 5.500 min
 Delta R.T.: -0.029 min
 Response: 91777
 Conc: 0.78 ng/ml



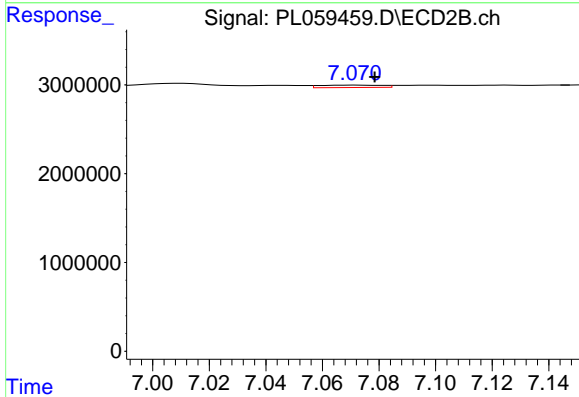
#26 Chlordane-4
 R.T.: 0.000 min
 Exp R.T. : 6.271 min
 Response: 0
 Conc: N.D.



#27 Chlordane-5

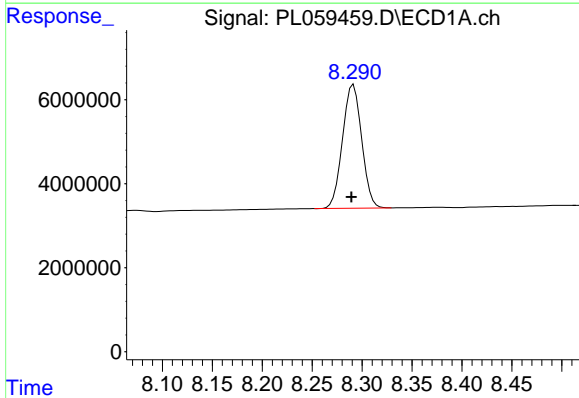
R.T.: 6.366 min
 Delta R.T.: -0.001 min
 Response: 98677
 Conc: 1.76 ng/ml

Instrument :
 ECD_L
 ClientSampled :



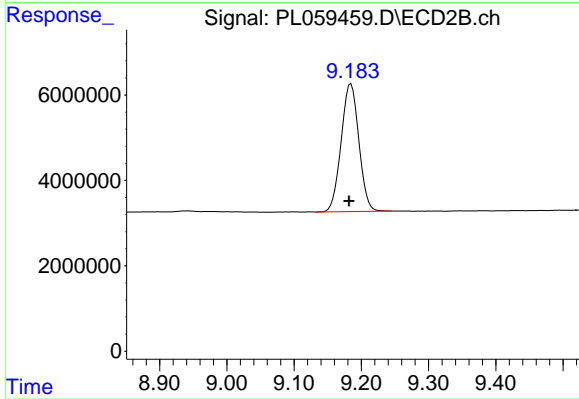
#27 Chlordane-5

R.T.: 7.072 min
 Delta R.T.: -0.007 min
 Response: 403030
 Conc: 4.65 ng/ml



#28 Decachlorobiphenyl

R.T.: 8.291 min
 Delta R.T.: 0.002 min
 Response: 39335149
 Conc: 23.10 ng/ml



#28 Decachlorobiphenyl

R.T.: 9.184 min
 Delta R.T.: 0.002 min
 Response: 54612034
 Conc: 23.85 ng/ml