

Data Path : Z:\pestpcbsrv\HPCHEM1\ECD_L\Data\PL062420\
 Data File : PL059473.D
 Signal(s) : Signal #1: ECD1A.ch Signal #2: ECD2B.ch
 Acq On : 24 Jun 2020 17:41
 Operator : AJ\MA
 Sample : L3089-02MS
 Misc :
 ALS Vial : 24 Sample Multiplier: 1

Instrument :
 ECD_L
 ClientSampleId :
 RB47184-RTMS

Integration File signal 1: autoint1.e
 Integration File signal 2: autoint2.e
 Quant Time: Jun 24 18:42:22 2020
 Quant Method : Z:\pestpcbsrv\HPCHEM1\ECD_L\methods\PL062220.M
 Quant Title : GC Extractables
 QLast Update : Mon Jun 22 14:09:48 2020
 Response via : Initial Calibration
 Integrator: ChemStation

Volume Inj. : 1 µl
 Signal #1 Phase : ZB-MR2 Signal #2 Phase: ZB-MR1
 Signal #1 Info : 30M x 0.32mm x0.2 Signal #2 Info : 30M x 0.32mm x0.5µm

Compound	RT#1	RT#2	Resp#1	Resp#2	ng/ml	ng/ml

System Monitoring Compounds						
1) SA Tetrachlo...	3.518	4.072	39942813	58401564	22.226	22.628
28) SA Decachlor...	8.290	9.185	36380485	49747039	21.365	21.727
Target Compounds						
2) A alpha-BHC	3.959	4.465	161.5E6	236.7E6	62.559	69.475
3) MA gamma-BHC...	4.244	4.753	142.8E6	218.9E6	62.626	69.939
4) MA Heptachlor	4.550	5.267	132.2E6	207.1E6	61.972	63.942
5) MB Aldrin	4.800	5.575	114.4E6	189.8E6	64.294	61.628
6) B beta-BHC	4.494	4.921	57166010	89911998	60.029	66.109
7) B delta-BHC	4.700	5.141	128.3E6	170.8E6	62.883	61.400
8) B Heptachlo...	5.244	5.963	105.6E6	158.6E6	70.258	63.199
9) A Endosulfan I	5.584	6.322	96582048	156.0E6	65.650	57.471
10) B gamma-Chl...	5.471	6.197	102.9E6	172.7E6	67.064	58.957
11) B alpha-Chl...	5.530	6.271	102.6E6	171.3E6	66.005	58.176
12) B 4,4'-DDE	5.693	6.426	95469592	147.2E6	65.702	54.508
13) MA Dieldrin	5.828	6.580	102.3E6	164.6E6	64.816	58.462
14) MA Endrin	6.086	6.799	95418570	148.3E6	62.800	60.054
15) B Endosulfa...	6.358	7.007	95340267	151.3E6	61.739	59.663
16) A 4,4'-DDD	6.210	6.917	82543710	136.7E6	63.254	61.438
17) MA 4,4'-DDT	6.451	7.218	85085964	138.2E6	64.530	60.786
18) B Endrin al...	6.526	7.132	80868598	131.6E6	61.187	60.013
19) B Endosulfa...	6.739	7.355	92349325	144.6E6	60.826	59.753
20) A Methoxychlor	6.997	7.675	47910602	77224139	59.117	58.174
21) B Endrin ke...	7.231	7.829	106.2E6	155.1E6	60.931	60.055
22) Mirex	7.424	8.286	82849348	115.7E6	58.671	58.598
23) Chlordane-1	4.394	0.000	502095	0	8.823	N.D. #
24) Chlordane-2	4.922f	5.575f	252113	189.8E6	4.645	1729.101 #
25) Chlordane-3	5.471	6.197	102.9E6	172.7E6	726.688	440.445 #
26) Chlordane-4	5.530	6.271	102.6E6	171.3E6	868.876	360.555 #
27) Chlordane-5	6.358	0.000	95340267	0	1698.891	N.D. #

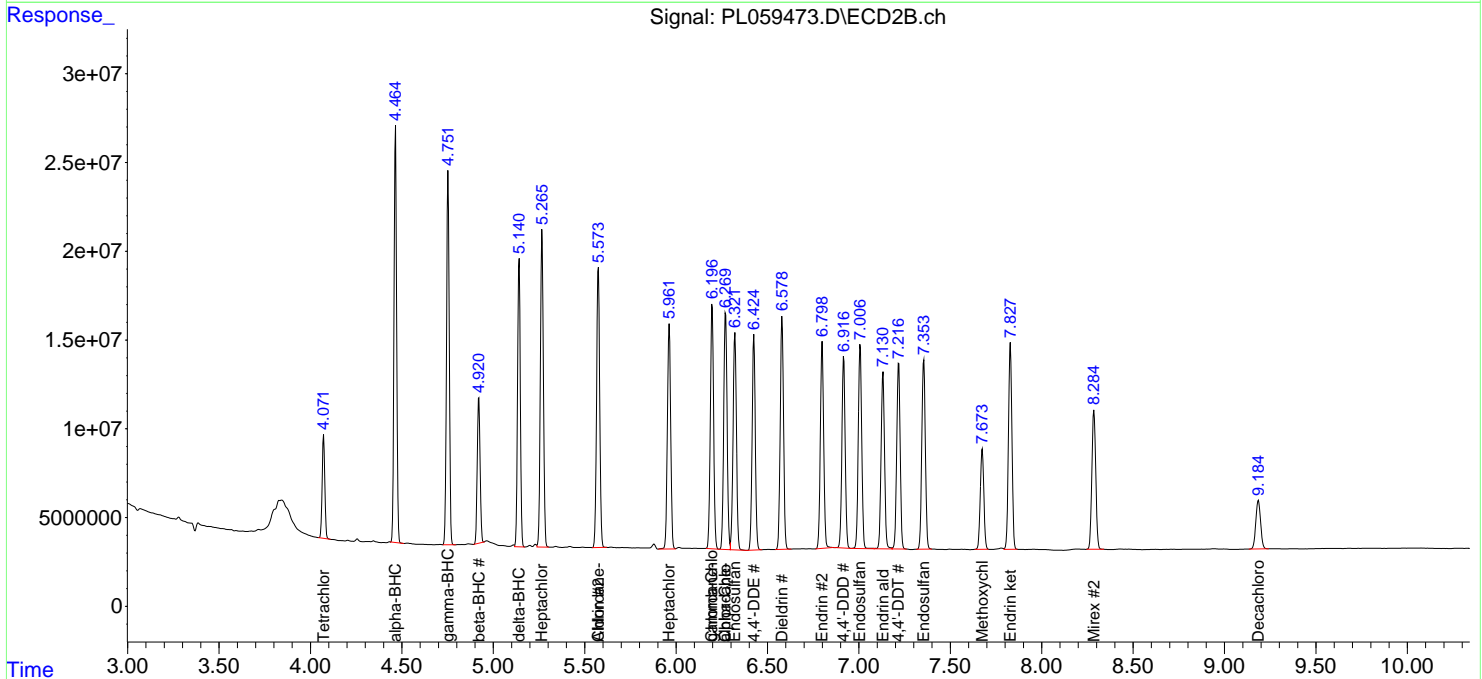
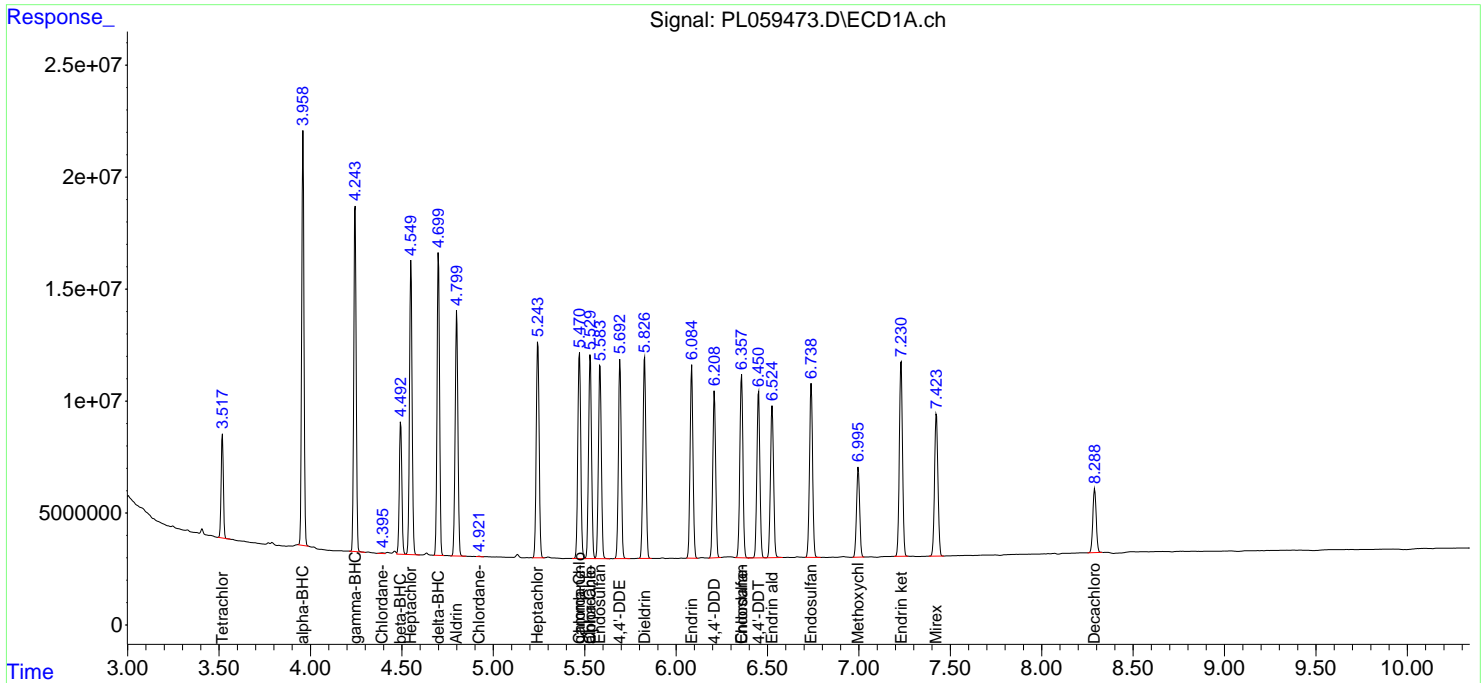
(f)=RT Delta > 1/2 Window (#)=Amounts differ by > 25% (m)=manual int.

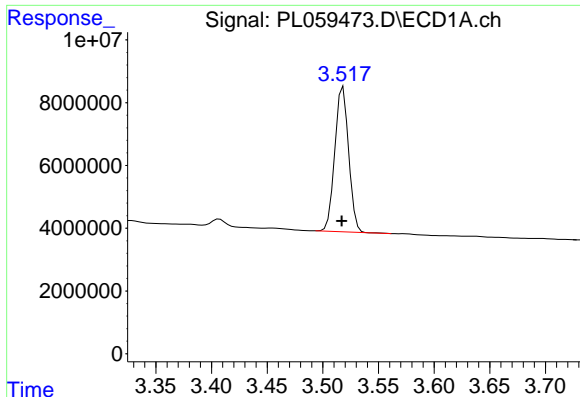
Data Path : Z:\pestpcbsrv\HPCHEM1\ECD_L\Data\PL062420\
 Data File : PL059473.D
 Signal(s) : Signal #1: ECD1A.ch Signal #2: ECD2B.ch
 Acq On : 24 Jun 2020 17:41
 Operator : AJ\MA
 Sample : L3089-02MS
 Misc :
 ALS Vial : 24 Sample Multiplier: 1

Instrument :
 ECD_L
 Client Sampled :
 RB47184-RTMS

Integration File signal 1: autoint1.e
 Integration File signal 2: autoint2.e
 Quant Time: Jun 24 18:42:22 2020
 Quant Method : Z:\pestpcbsrv\HPCHEM1\ECD_L\methods\PL062220.M
 Quant Title : GC Extractables
 QLast Update : Mon Jun 22 14:09:48 2020
 Response via : Initial Calibration
 Integrator: ChemStation

Volume Inj. : 1 µl
 Signal #1 Phase : ZB-MR2 Signal #2 Phase: ZB-MR1
 Signal #1 Info : 30M x 0.32mm x0.2 Signal #2 Info : 30M x 0.32mm x0.5µm

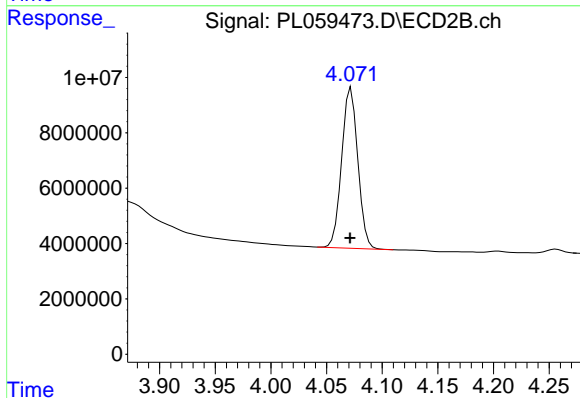




#1 Tetrachloro-m-xylene

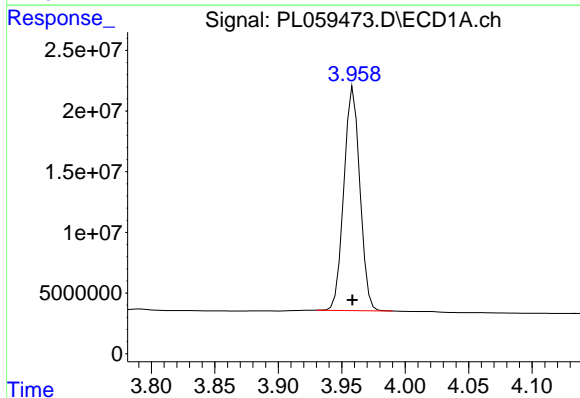
R.T.: 3.518 min
 Delta R.T.: 0.001 min
 Response: 39942813
 Conc: 22.23 ng/ml

Instrument :
 ECD_L
 ClientSampleId :
 RB47184-RTMS



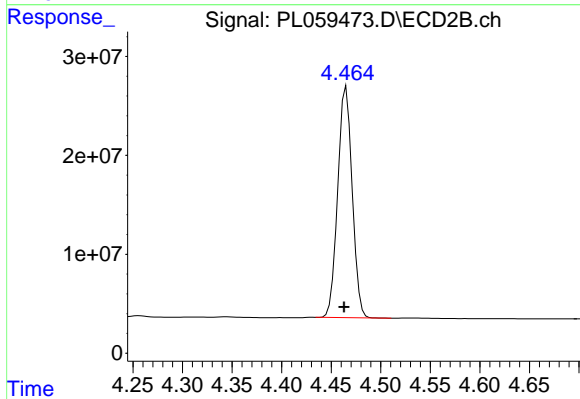
#1 Tetrachloro-m-xylene

R.T.: 4.072 min
 Delta R.T.: 0.000 min
 Response: 58401564
 Conc: 22.63 ng/ml



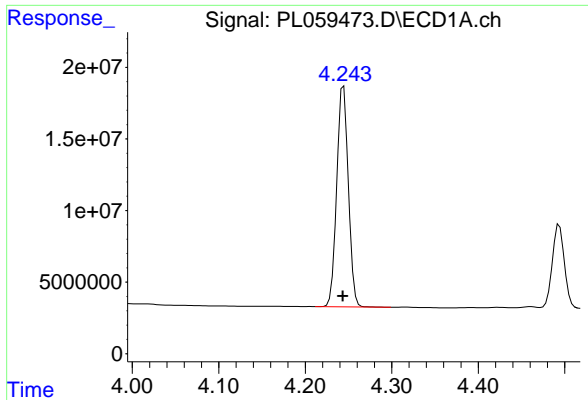
#2 alpha-BHC

R.T.: 3.959 min
 Delta R.T.: 0.000 min
 Response: 161469539
 Conc: 62.56 ng/ml



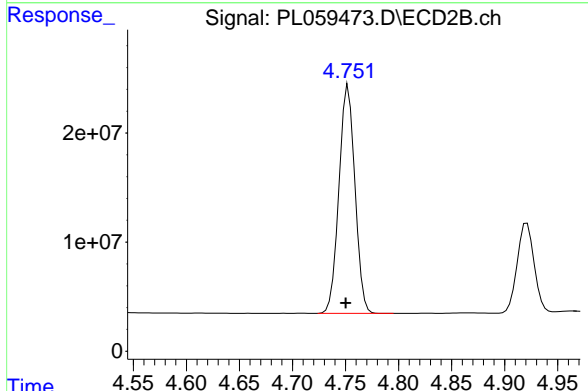
#2 alpha-BHC

R.T.: 4.465 min
 Delta R.T.: 0.002 min
 Response: 236671251
 Conc: 69.47 ng/ml

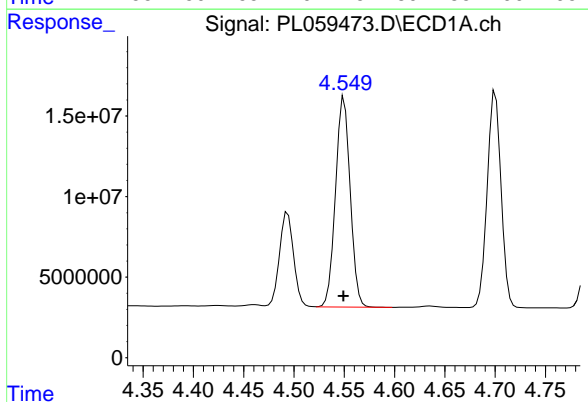


#3 gamma-BHC (Lindane)
R.T.: 4.244 min
Delta R.T.: 0.001 min
Response: 142823959
Conc: 62.63 ng/ml

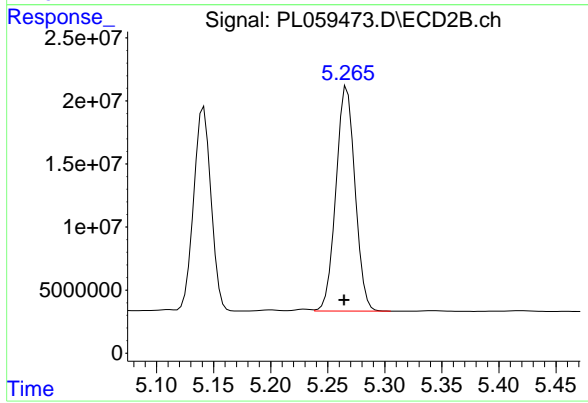
Instrument :
ECD_L
ClientSampleId :
RB47184-RTMS



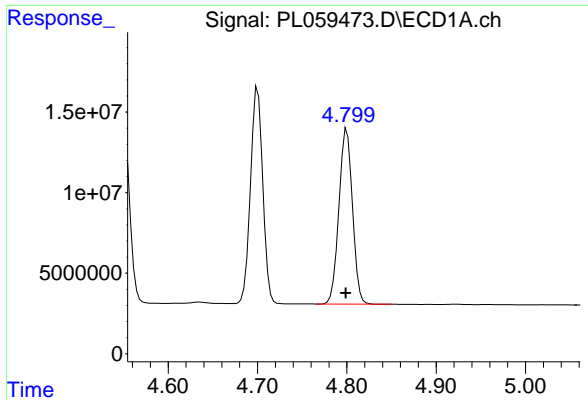
#3 gamma-BHC (Lindane)
R.T.: 4.753 min
Delta R.T.: 0.002 min
Response: 218903477
Conc: 69.94 ng/ml



#4 Heptachlor
R.T.: 4.550 min
Delta R.T.: 0.000 min
Response: 132155425
Conc: 61.97 ng/ml

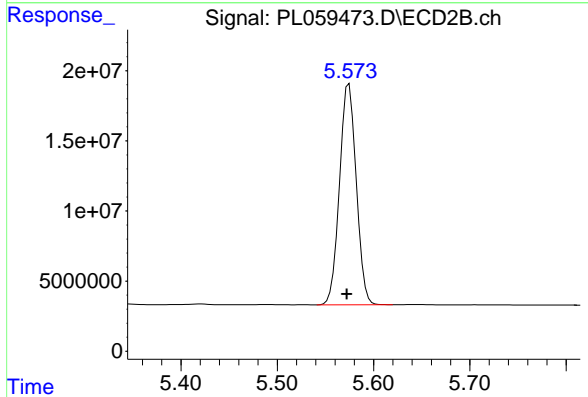


#4 Heptachlor
R.T.: 5.267 min
Delta R.T.: 0.002 min
Response: 207098962
Conc: 63.94 ng/ml

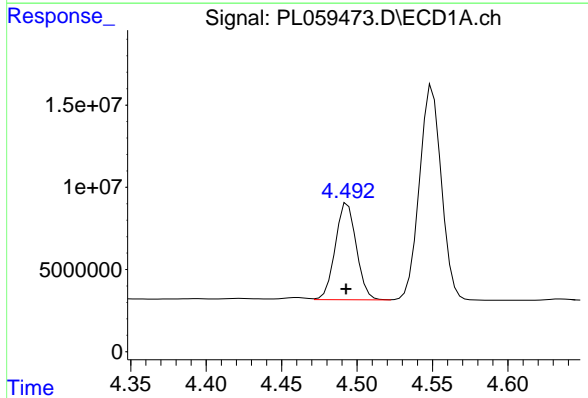


#5 Aldrin
 R.T.: 4.800 min
 Delta R.T.: 0.001 min
 Response: 114410556
 Conc: 64.29 ng/ml

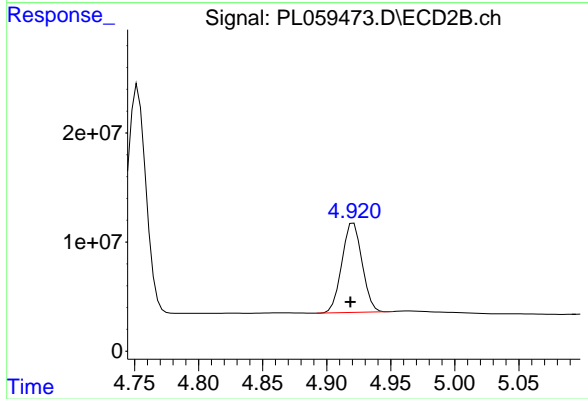
Instrument :
 ECD_L
 ClientSampleId :
 RB47184-RTMS



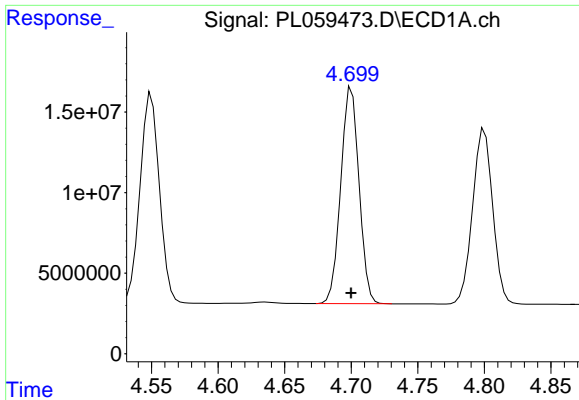
#5 Aldrin
 R.T.: 5.575 min
 Delta R.T.: 0.002 min
 Response: 189791595
 Conc: 61.63 ng/ml



#6 beta-BHC
 R.T.: 4.494 min
 Delta R.T.: 0.000 min
 Response: 57166010
 Conc: 60.03 ng/ml

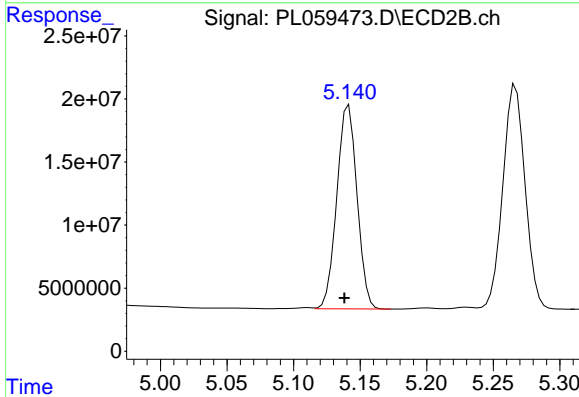


#6 beta-BHC
 R.T.: 4.921 min
 Delta R.T.: 0.002 min
 Response: 89911998
 Conc: 66.11 ng/ml

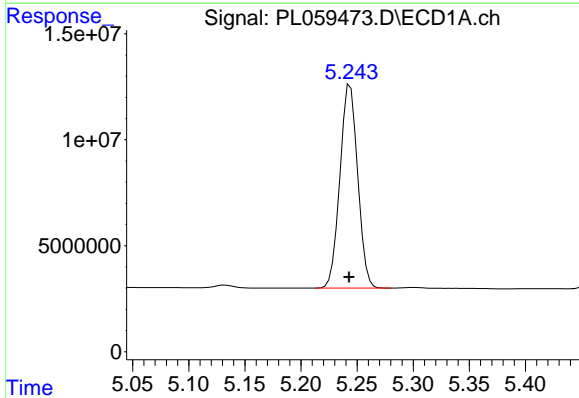


#7 delta-BHC
R.T.: 4.700 min
Delta R.T.: 0.000 min
Response: 128259067
Conc: 62.88 ng/ml

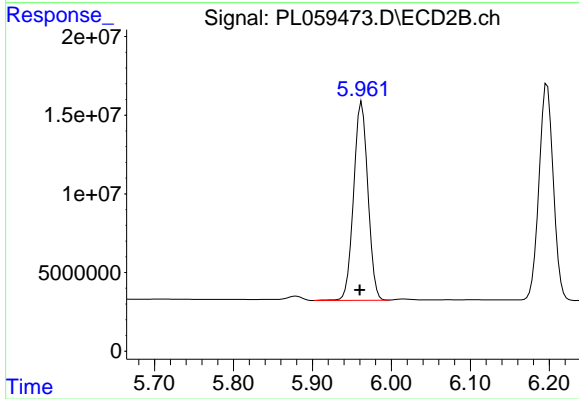
Instrument :
ECD_L
ClientSampleId :
RB47184-RTMS



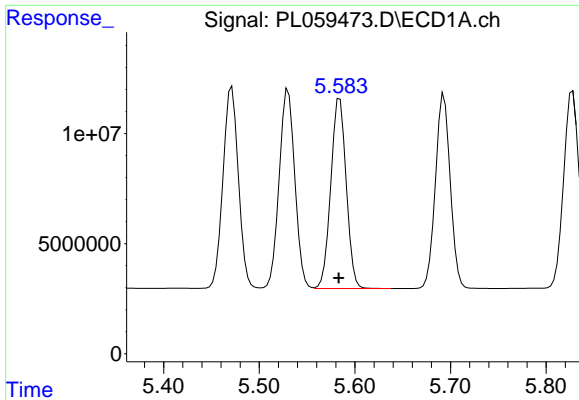
#7 delta-BHC
R.T.: 5.141 min
Delta R.T.: 0.003 min
Response: 170834501
Conc: 61.40 ng/ml



#8 Heptachlor epoxide
R.T.: 5.244 min
Delta R.T.: 0.001 min
Response: 105612351
Conc: 70.26 ng/ml

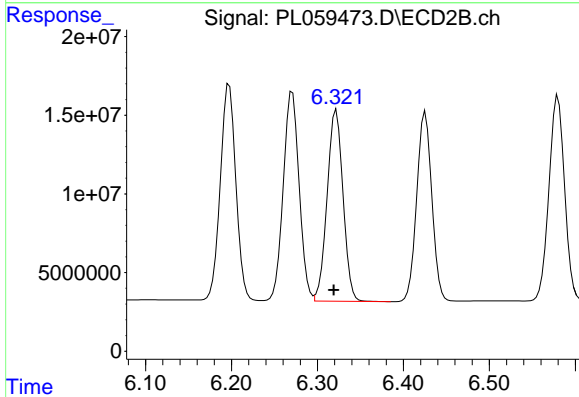


#8 Heptachlor epoxide
R.T.: 5.963 min
Delta R.T.: 0.003 min
Response: 158613266
Conc: 63.20 ng/ml

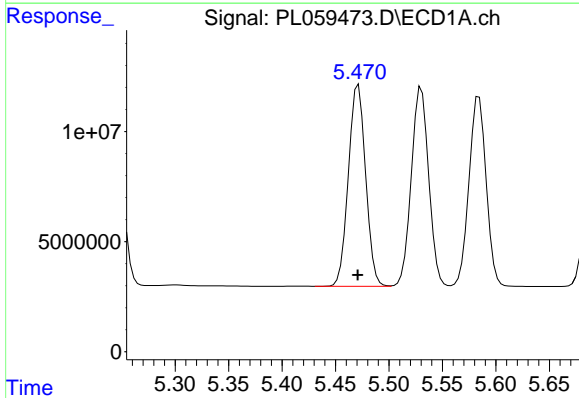


#9 Endosulfan I
 R.T.: 5.584 min
 Delta R.T.: 0.001 min
 Response: 96582048
 Conc: 65.65 ng/ml

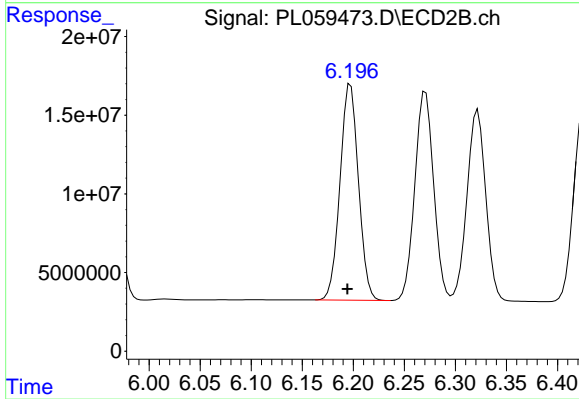
Instrument :
 ECD_L
 ClientSampleId :
 RB47184-RTMS



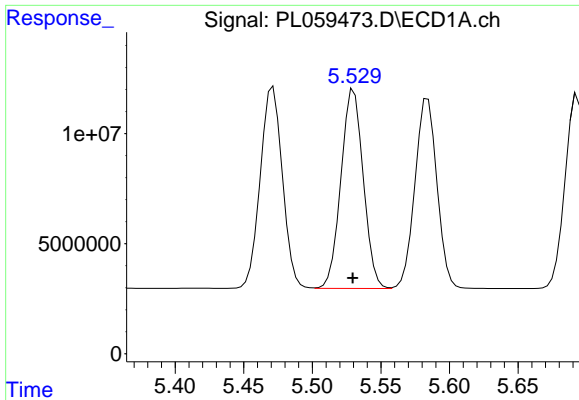
#9 Endosulfan I
 R.T.: 6.322 min
 Delta R.T.: 0.003 min
 Response: 155977376
 Conc: 57.47 ng/ml



#10 gamma-Chlordane
 R.T.: 5.471 min
 Delta R.T.: 0.000 min
 Response: 102859479
 Conc: 67.06 ng/ml

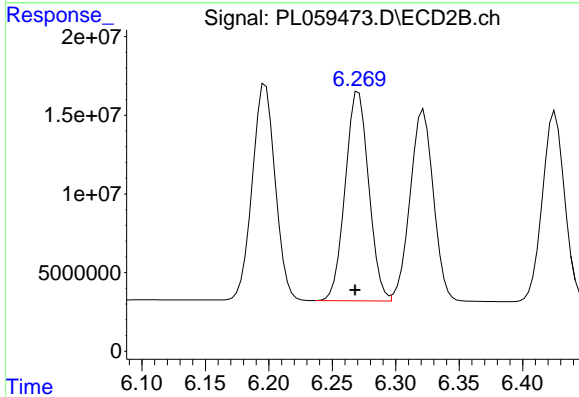


#10 gamma-Chlordane
 R.T.: 6.197 min
 Delta R.T.: 0.003 min
 Response: 172691583
 Conc: 58.96 ng/ml

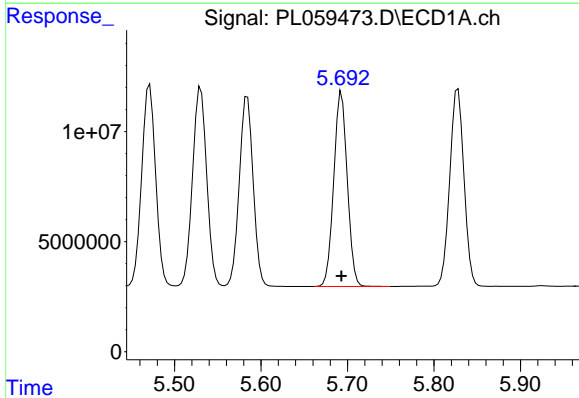


#11 alpha-Chlordane
 R.T.: 5.530 min
 Delta R.T.: 0.000 min
 Response: 102574833
 Conc: 66.00 ng/ml

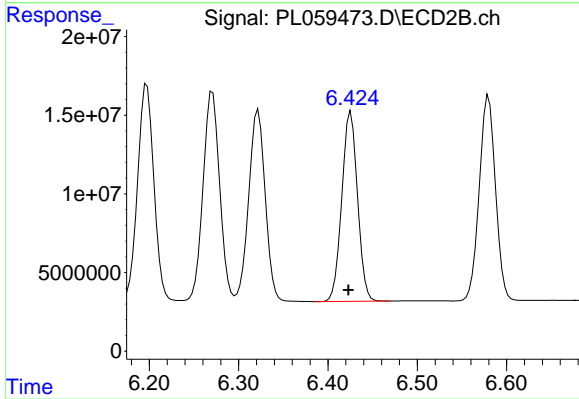
Instrument :
 ECD_L
 ClientSampleId :
 RB47184-RTMS



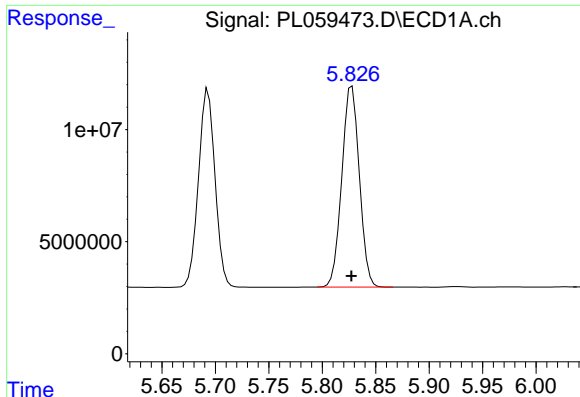
#11 alpha-Chlordane
 R.T.: 6.271 min
 Delta R.T.: 0.003 min
 Response: 171315237
 Conc: 58.18 ng/ml



#12 4,4'-DDE
 R.T.: 5.693 min
 Delta R.T.: 0.000 min
 Response: 95469592
 Conc: 65.70 ng/ml



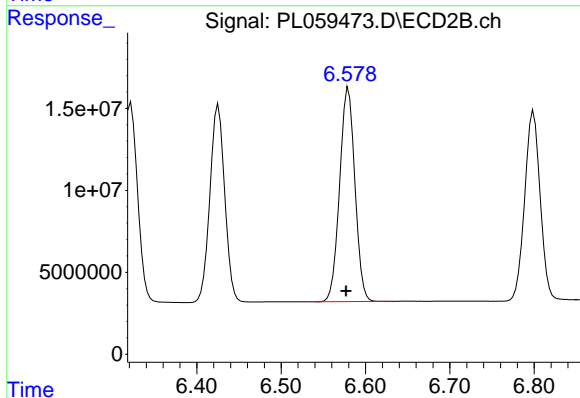
#12 4,4'-DDE
 R.T.: 6.426 min
 Delta R.T.: 0.003 min
 Response: 147208909
 Conc: 54.51 ng/ml



#13 Dieldrin

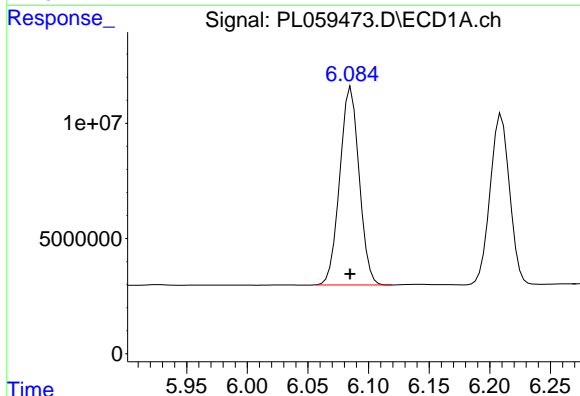
R.T.: 5.828 min
 Delta R.T.: 0.000 min
 Response: 102251861
 Conc: 64.82 ng/ml

Instrument :
 ECD_L
 ClientSampled :
 RB47184-RTMS



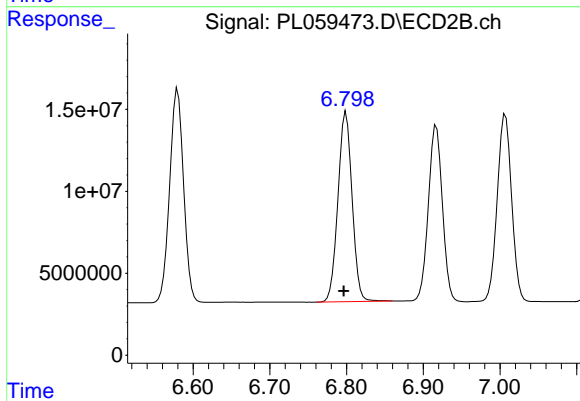
#13 Dieldrin

R.T.: 6.580 min
 Delta R.T.: 0.003 min
 Response: 164583360
 Conc: 58.46 ng/ml



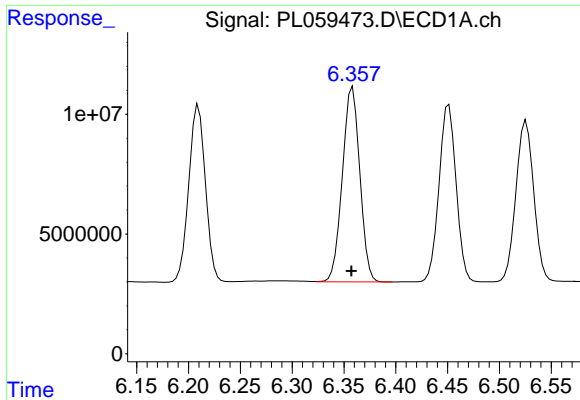
#14 Endrin

R.T.: 6.086 min
 Delta R.T.: 0.000 min
 Response: 95418570
 Conc: 62.80 ng/ml



#14 Endrin

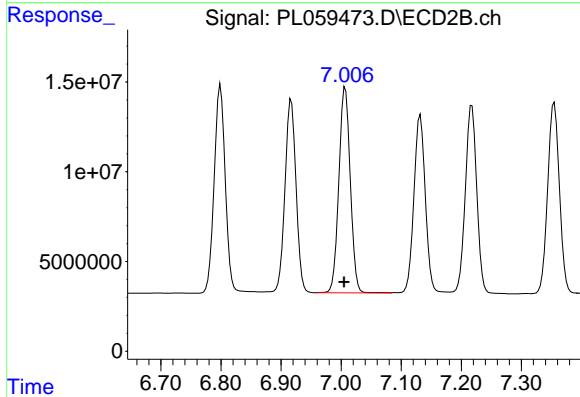
R.T.: 6.799 min
 Delta R.T.: 0.003 min
 Response: 148348858
 Conc: 60.05 ng/ml



#15 Endosulfan II

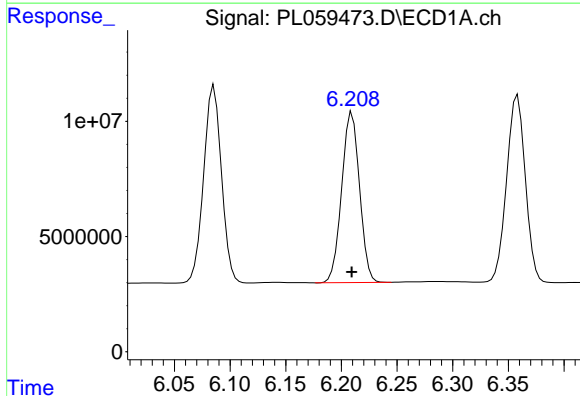
R.T.: 6.358 min
 Delta R.T.: 0.001 min
 Response: 95340267
 Conc: 61.74 ng/ml

Instrument :
 ECD_L
 ClientSampleId :
 RB47184-RTMS



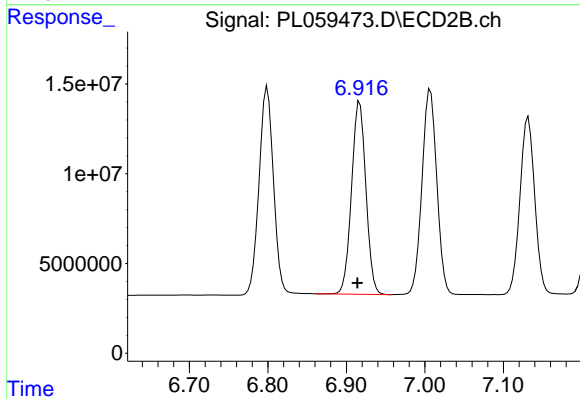
#15 Endosulfan II

R.T.: 7.007 min
 Delta R.T.: 0.002 min
 Response: 151297621
 Conc: 59.66 ng/ml



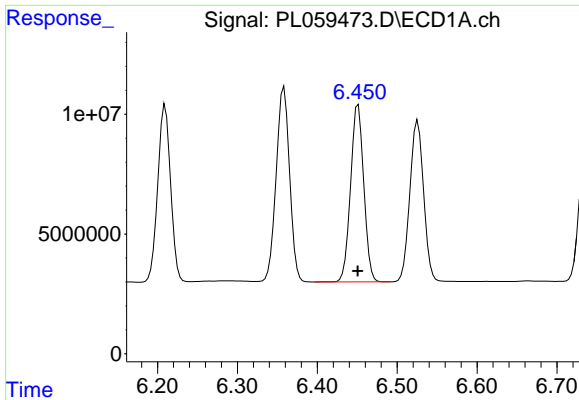
#16 4,4'-DDD

R.T.: 6.210 min
 Delta R.T.: 0.000 min
 Response: 82543710
 Conc: 63.25 ng/ml



#16 4,4'-DDD

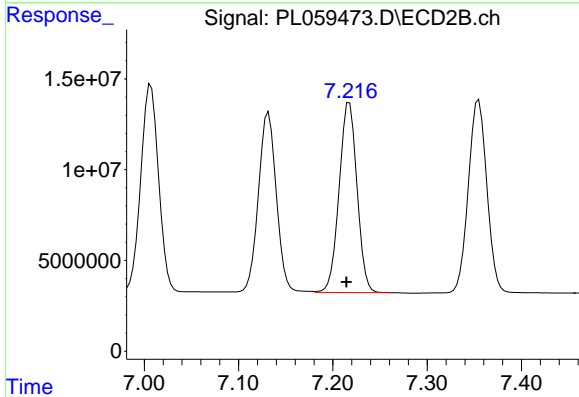
R.T.: 6.917 min
 Delta R.T.: 0.003 min
 Response: 136706663
 Conc: 61.44 ng/ml



#17 4,4'-DDT

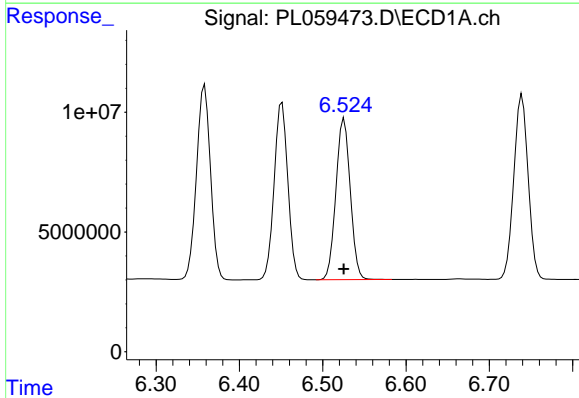
R.T.: 6.451 min
 Delta R.T.: 0.000 min
 Response: 85085964
 Conc: 64.53 ng/ml

Instrument :
 ECD_L
 ClientSampleId :
 RB47184-RTMS



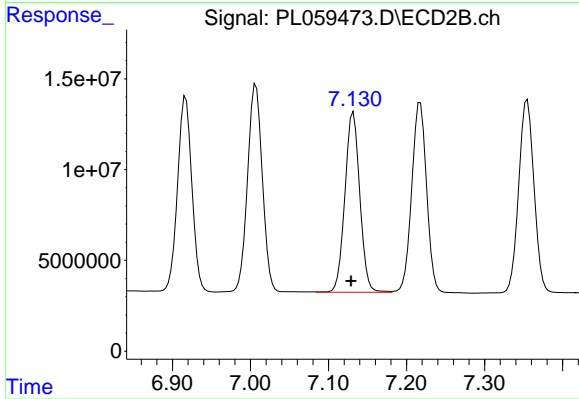
#17 4,4'-DDT

R.T.: 7.218 min
 Delta R.T.: 0.003 min
 Response: 138167563
 Conc: 60.79 ng/ml



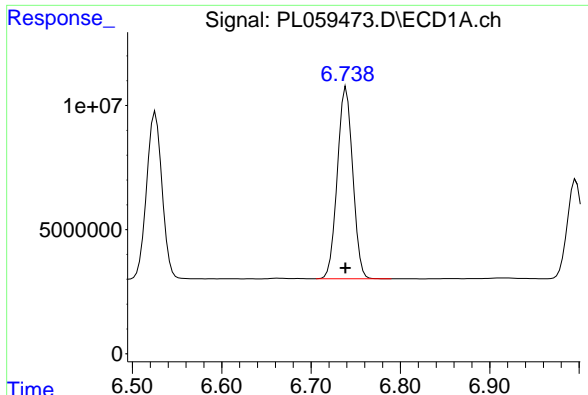
#18 Endrin aldehyde

R.T.: 6.526 min
 Delta R.T.: 0.000 min
 Response: 80868598
 Conc: 61.19 ng/ml



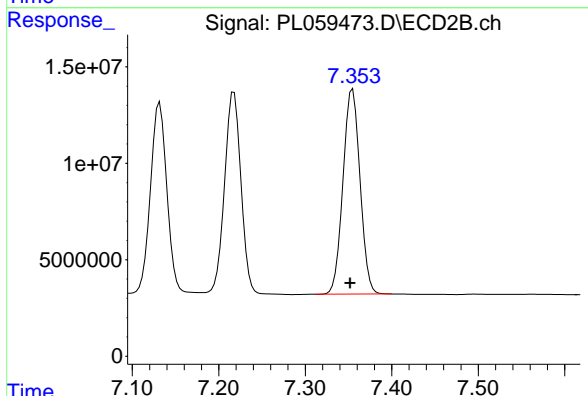
#18 Endrin aldehyde

R.T.: 7.132 min
 Delta R.T.: 0.003 min
 Response: 131628208
 Conc: 60.01 ng/ml

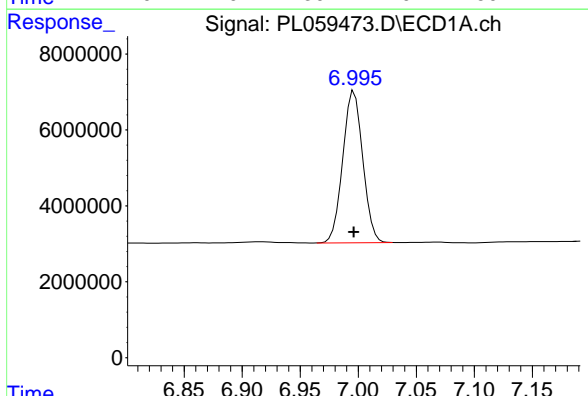


#19 Endosulfan Sulfate
 R.T.: 6.739 min
 Delta R.T.: 0.000 min
 Response: 92349325
 Conc: 60.83 ng/ml

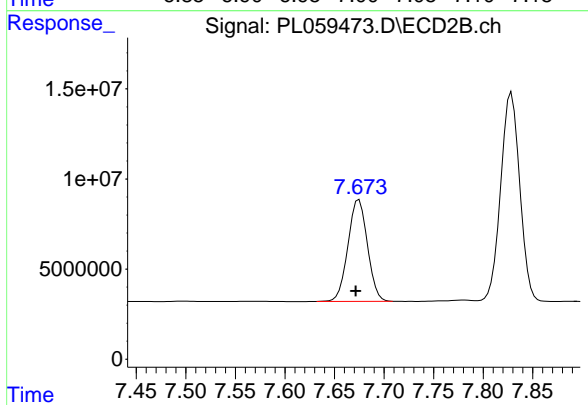
Instrument :
 ECD_L
 ClientSampleId :
 RB47184-RTMS



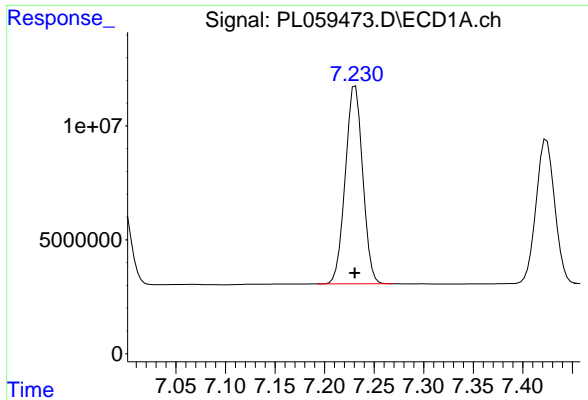
#19 Endosulfan Sulfate
 R.T.: 7.355 min
 Delta R.T.: 0.003 min
 Response: 144626197
 Conc: 59.75 ng/ml



#20 Methoxychlor
 R.T.: 6.997 min
 Delta R.T.: 0.000 min
 Response: 47910602
 Conc: 59.12 ng/ml



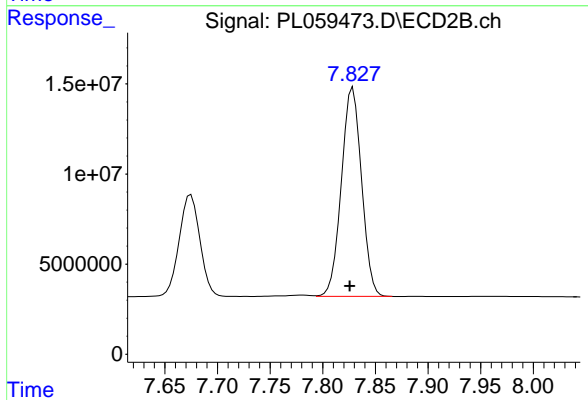
#20 Methoxychlor
 R.T.: 7.675 min
 Delta R.T.: 0.003 min
 Response: 77224139
 Conc: 58.17 ng/ml



#21 Endrin ketone

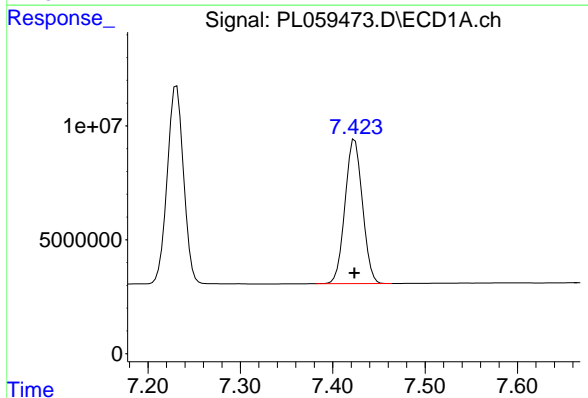
R.T.: 7.231 min
Delta R.T.: 0.000 min
Response: 106235131
Conc: 60.93 ng/ml

Instrument :
ECD_L
ClientSampleId :
RB47184-RTMS



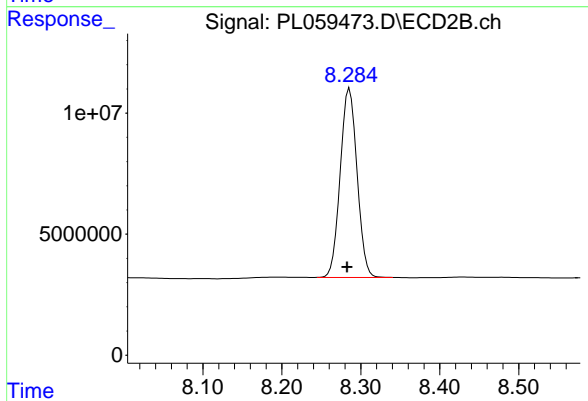
#21 Endrin ketone

R.T.: 7.829 min
Delta R.T.: 0.003 min
Response: 155130426
Conc: 60.05 ng/ml



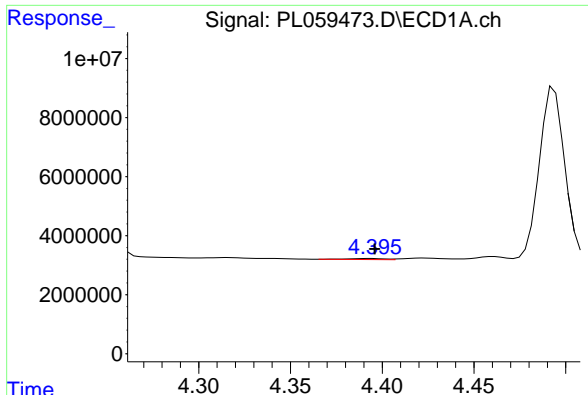
#22 Mirex

R.T.: 7.424 min
Delta R.T.: 0.000 min
Response: 82849348
Conc: 58.67 ng/ml



#22 Mirex

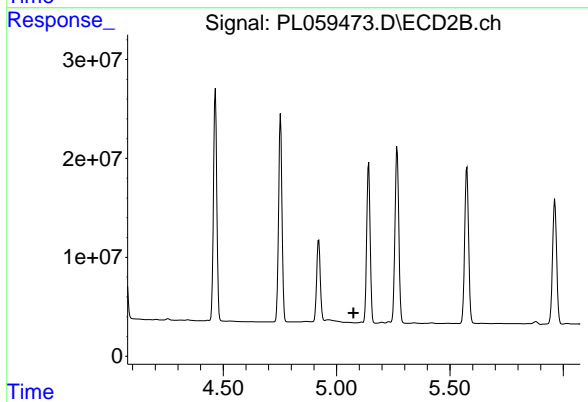
R.T.: 8.286 min
Delta R.T.: 0.003 min
Response: 115739196
Conc: 58.60 ng/ml



#23 Chlordane-1

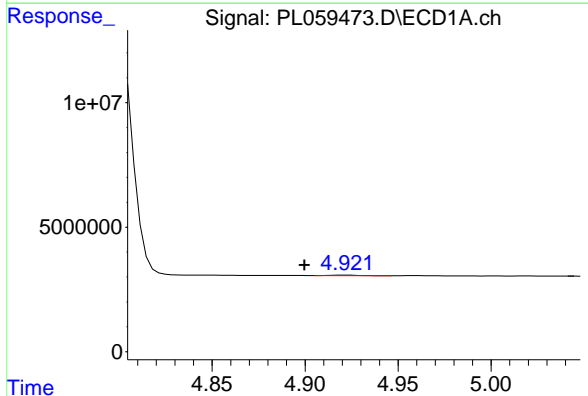
R.T.: 4.394 min
 Delta R.T.: -0.002 min
 Response: 502095
 Conc: 8.82 ng/ml

Instrument :
 ECD_L
 ClientSampleId :
 RB47184-RTMS



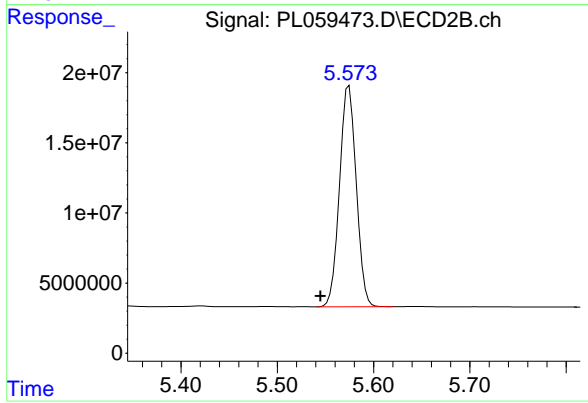
#23 Chlordane-1

R.T.: 0.000 min
 Exp R.T. : 5.075 min
 Response: 0
 Conc: N.D.



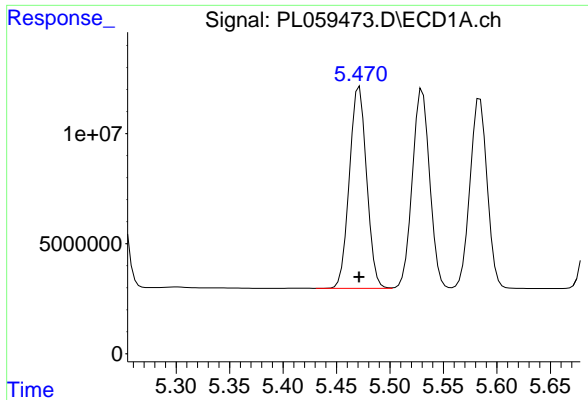
#24 Chlordane-2

R.T.: 4.922 min
 Delta R.T.: 0.022 min
 Response: 252113
 Conc: 4.64 ng/ml



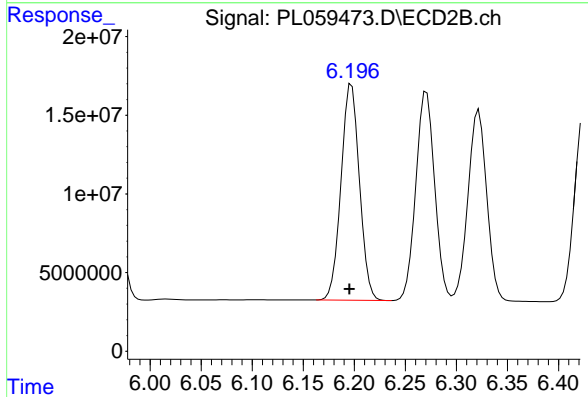
#24 Chlordane-2

R.T.: 5.575 min
 Delta R.T.: 0.030 min
 Response: 189791595
 Conc: 1729.10 ng/ml

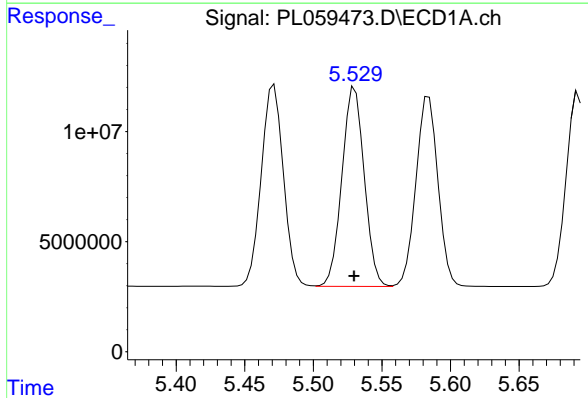


#25 Chlordane-3
 R.T.: 5.471 min
 Delta R.T.: 0.000 min
 Response: 102859479
 Conc: 726.69 ng/ml

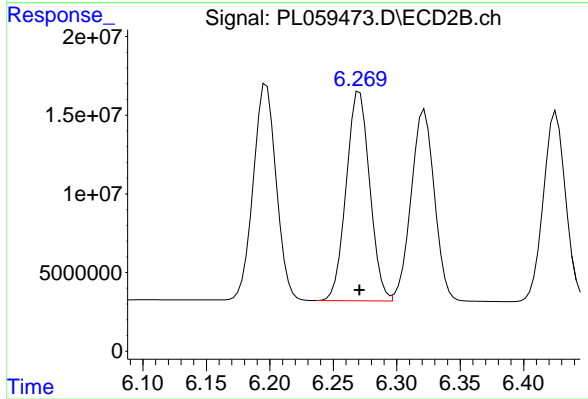
Instrument :
 ECD_L
 ClientSampleId :
 RB47184-RTMS



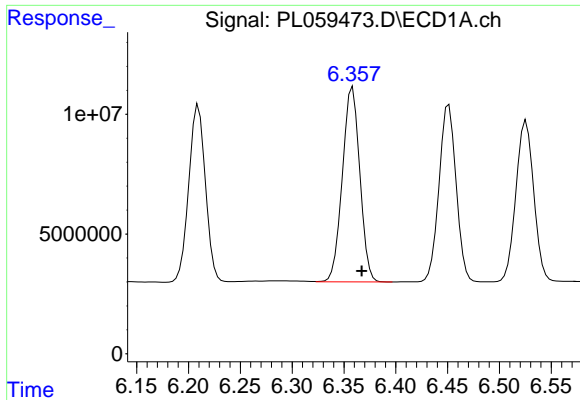
#25 Chlordane-3
 R.T.: 6.197 min
 Delta R.T.: 0.002 min
 Response: 172691583
 Conc: 440.44 ng/ml



#26 Chlordane-4
 R.T.: 5.530 min
 Delta R.T.: 0.000 min
 Response: 102574833
 Conc: 868.88 ng/ml

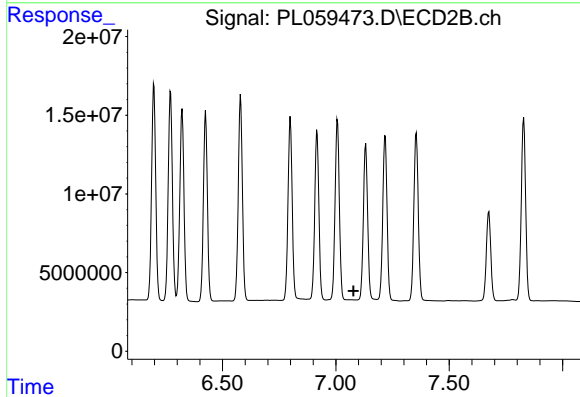


#26 Chlordane-4
 R.T.: 6.271 min
 Delta R.T.: 0.000 min
 Response: 171315237
 Conc: 360.56 ng/ml

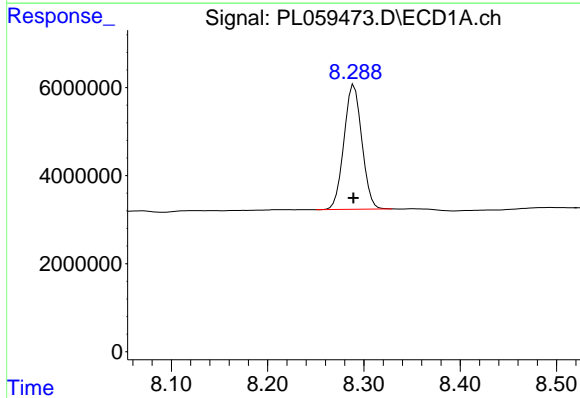


#27 Chlordane-5
 R.T.: 6.358 min
 Delta R.T.: -0.009 min
 Response: 95340267
 Conc: 1698.89 ng/ml

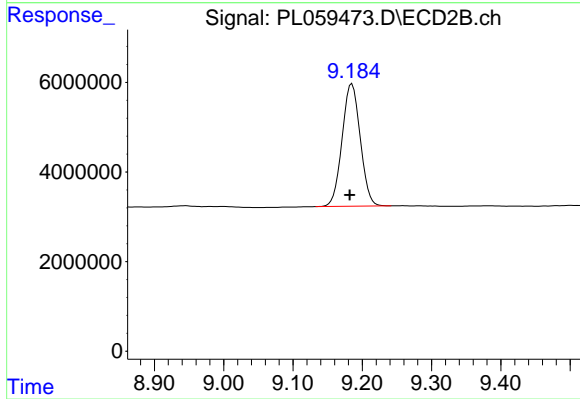
Instrument :
 ECD_L
 ClientSampled :
 RB47184-RTMS



#27 Chlordane-5
 R.T.: 0.000 min
 Exp R.T. : 7.079 min
 Response: 0
 Conc: N.D.



#28 Decachlorobiphenyl
 R.T.: 8.290 min
 Delta R.T.: 0.000 min
 Response: 36380485
 Conc: 21.36 ng/ml



#28 Decachlorobiphenyl
 R.T.: 9.185 min
 Delta R.T.: 0.003 min
 Response: 49747039
 Conc: 21.73 ng/ml